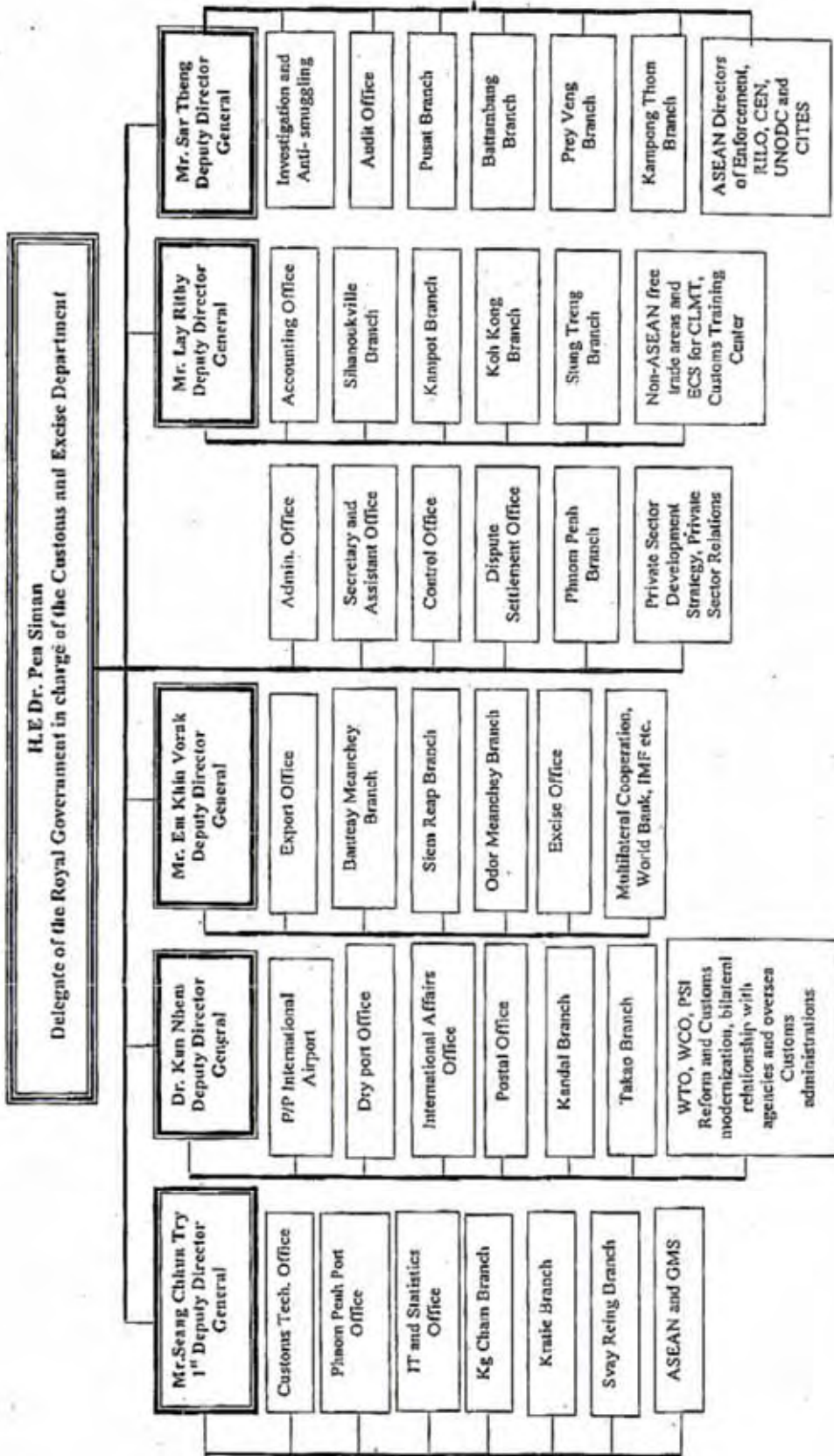


関連資料 3

CED 機構図



MEF Prakas No 212 SHV PRK dated 19 July 2004

関連資料 4

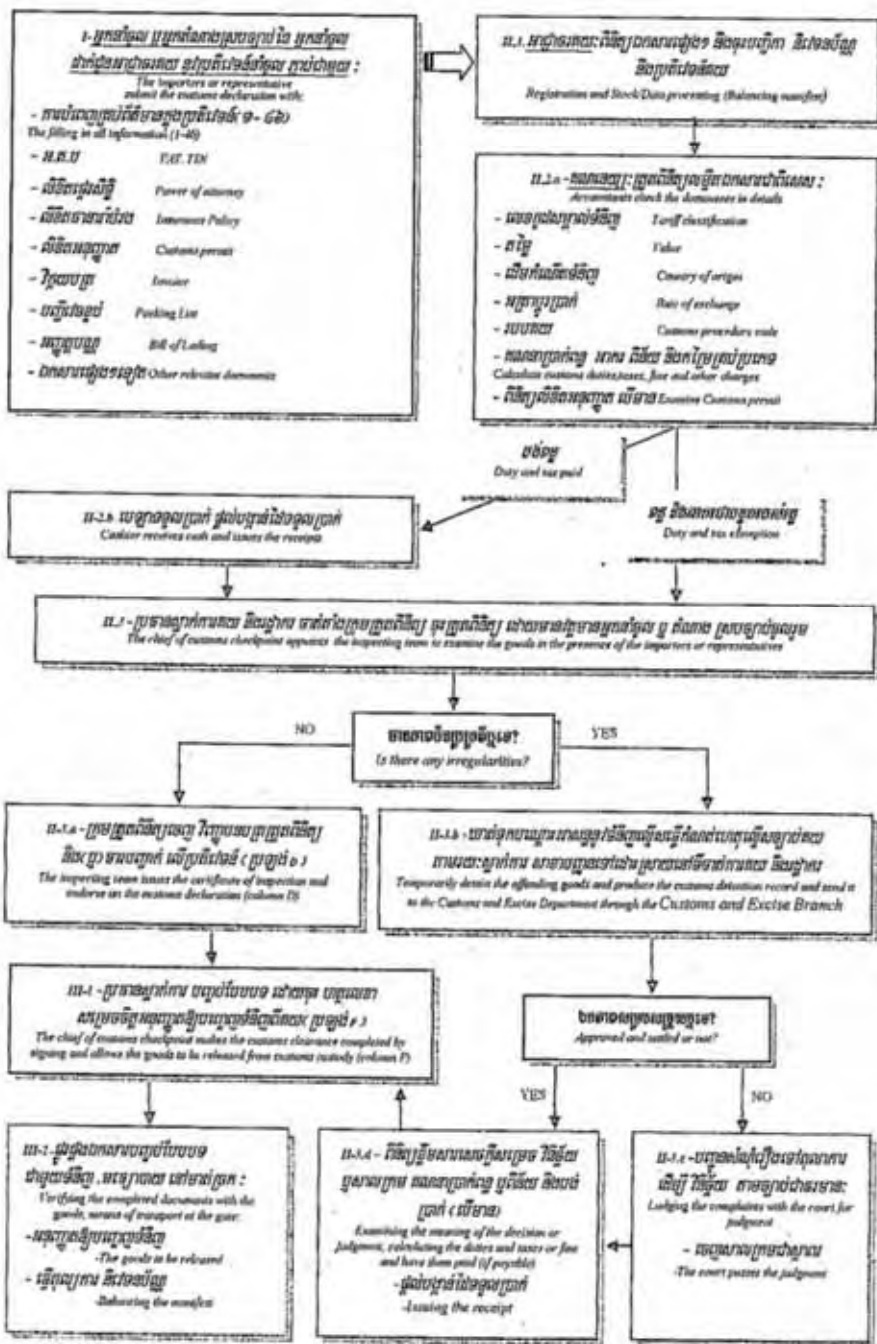
シアヌークビル港税関資料

- Customs and Excise Checkpoint of Sihanoukville Port
- The Stages of Customs Clearance before and at present

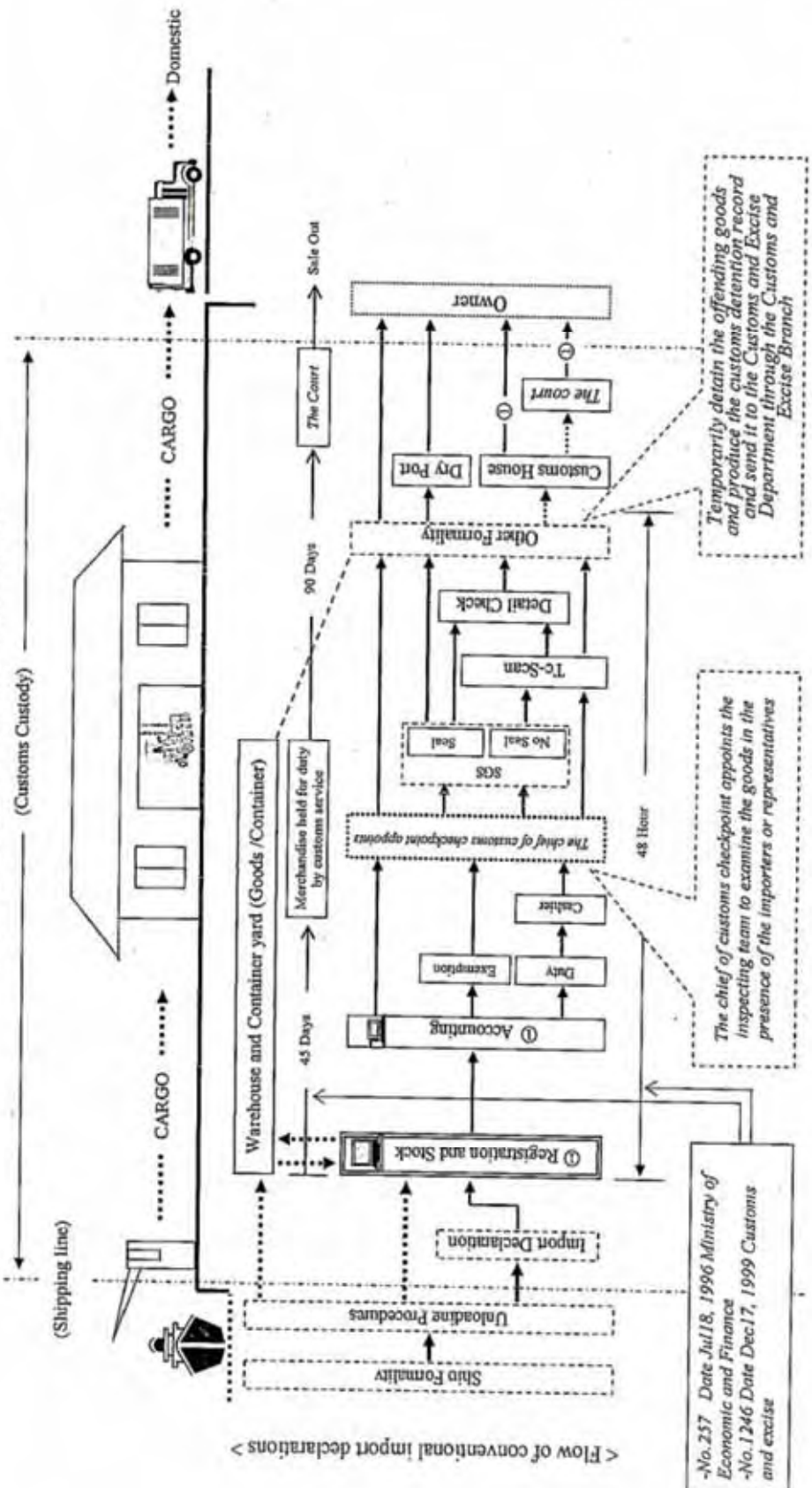
ផ្ទះស្រោចទំនិញ និង ត្រួតពិនិត្យទំនិញ
CUSTOMS AND EXCISE CHECKPOINT OF SHANOUK VILLE PORT

① Organizational Structure	② Activities of working, goods and means of transport							
	Categories of goods	2002		2003		2004		
			Amount	%	Amount	%	Amount	%
-Customs and Excise Checkpoint of Sihanouk Ville port is under direct guidance of Customs and Excise Branch of Sihanouk Ville and Customs and Excise Department -Total personnel : 69 divided as 05 sections 1. Leadership Chief of Customs and Excise Checkpoint and 07 deputy chiefs as assistants 2. Headquarters -Registration, Stock Computer -Accounting -Slits formality 3. Warehouse and Container yard 4. Inspection -Inspecting teams -Active teams -Gate -TC-SCAN -Investigation	① Imported goods	Commercial Goods -Cigarettes, wine, car, beer, steel, lubricant oil, cement, clothes and electronic goods. Non Commercial Goods Garment materials, goods of Embassies IOS and NGOS, humanitarian aids and personal effects. * Investment goods: 23,805 = 42% -Garment : 22,413 = 40 % -Other : 1,392 = 03 %	33,081	117 %	34,900	105 %	39,701	114 %
	② Exported goods	Commercial Goods -Clothes, fishing products, rice, grain, rubber, processing wood ... -Inspected by TC-SCAN : 1,334 Units Non Commercial Goods Goods of embassies, IOS and NGOS and personal effects.	22,347 Unit 268,496,260 T 8,076,901 T T	110 % % %	1,438 Unit 21,949 Unit 172,556,925 T 5,435 T	109 % 64 % 0,06 %	3,127 Unit 25,679 Unit 678,705,927 T 2,340	128 % 117 % 89 % 43 %
③ Ship	A scanner of SHI DA INVESTMENT CO. LTD from china. It's operated by customs officers. It has been started operation since 15.6.02. * Containers inspected by TC-SCAN are about: 41,938 = 75 %.	Declaration ED TSED Container ED TSED LCL Exported Tax	1,478 22,347 Unit 268,496,260 T 8,076,901 T T	121 % 110 % % %	1,438 26,388 1,438 Unit 21,949 Unit 172,556,925 T 5,435 T	97 % % 109 % 64 % 0,06 %	1,368 26,647 3,127 Unit 25,679 Unit 678,705,927 T 2,340	95 % 101 % 128 % 117 % 89 % 43 %
④ Warehouse and Container Yard	A scanner of SHI DA INVESTMENT CO. LTD from china. It's operated by customs officers. It has been started operation since 15.6.02. * Containers inspected by TC-SCAN are about: 41,938 = 75 %.	ED=Import Declaration, ED=Export Declaration, TSED=Stranstit Export Declaration, LCL=Loose Cargo Loaded, PSI=Pre-shipment Inspection	-1979- 1993 most of the ships were from socialist countries -1993- 2004 There are commercial ships from Singapore, Malaysia, Thailand, China, Korea, Japan ... * Warehouse and Container Yard -5 warehouse for loose cargo loaded with the surface of 36000m ² . - Good container yard with the surface of 25000m ² for full containers and empty containers divided as CYI, CYII, CYIII.	- Old port: Jetty was constructed in 1956 and started operation in 1960. 290 m long, 28 m wide and 8,50 m deep. - New quay: was built in 1966 and started operation in 1969. 350 m long and 7,50 m deep. - Oil port: under the supervision of Excise office of Customs and Excise Department. A. Stone wharf: jetty with 5 m long, 5 m wide and was built 1975-1978. B. Pontoon C. SOKIMEX Port: SOKIMEX and MARUBENI jointly constructed 120 m oil terminal with international standard.	Document inspection done at Customs and Excise Checkpoint of Sihanouk Ville port: - Container in : 56,467 Units - Goods inspection at container yard: 55,838 Units 1- Inspected by TC-SCAN : 41,938 Units: - Investment goods (Garment): 22,413 = 40 % - Investment goods (Other) : 1,392 = 03 % - PSI (no seal) : 7,375 = 13 % - Non PSI (7%) : 5,141 = 09 % - Other : 5,617 = 10 % 2- Not inspected by TC-SCAN: 13,900 Units: - PSI (Seal) : 9,316 = 17 % - Other : 4,584 = 08 % - Check exemption for diplomatic goods. - Transit containers to Dry port: 4,694 = 08 %			

គំរូនៃប្រតិបត្តិការសវនាកម្មនិងរដ្ឋាករ
 Flow chart of Customs clearance(Sihanouk Ville Port)



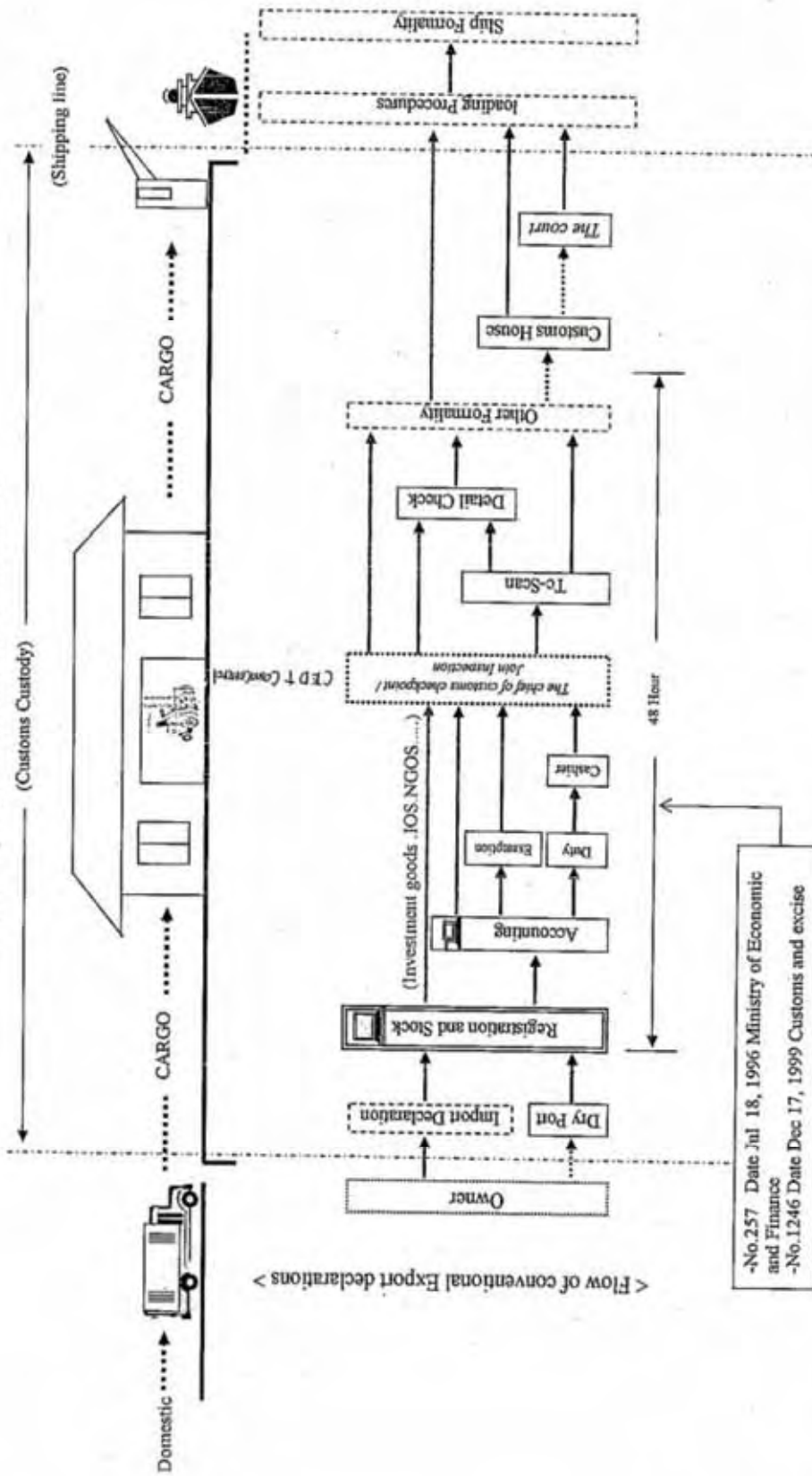
Flow of Import Clearance Procedures



-No. 257 Date Jul 18, 1996 Ministry of Economic and Finance
 -No. 1246 Date Dec 17, 1999 Customs and excise

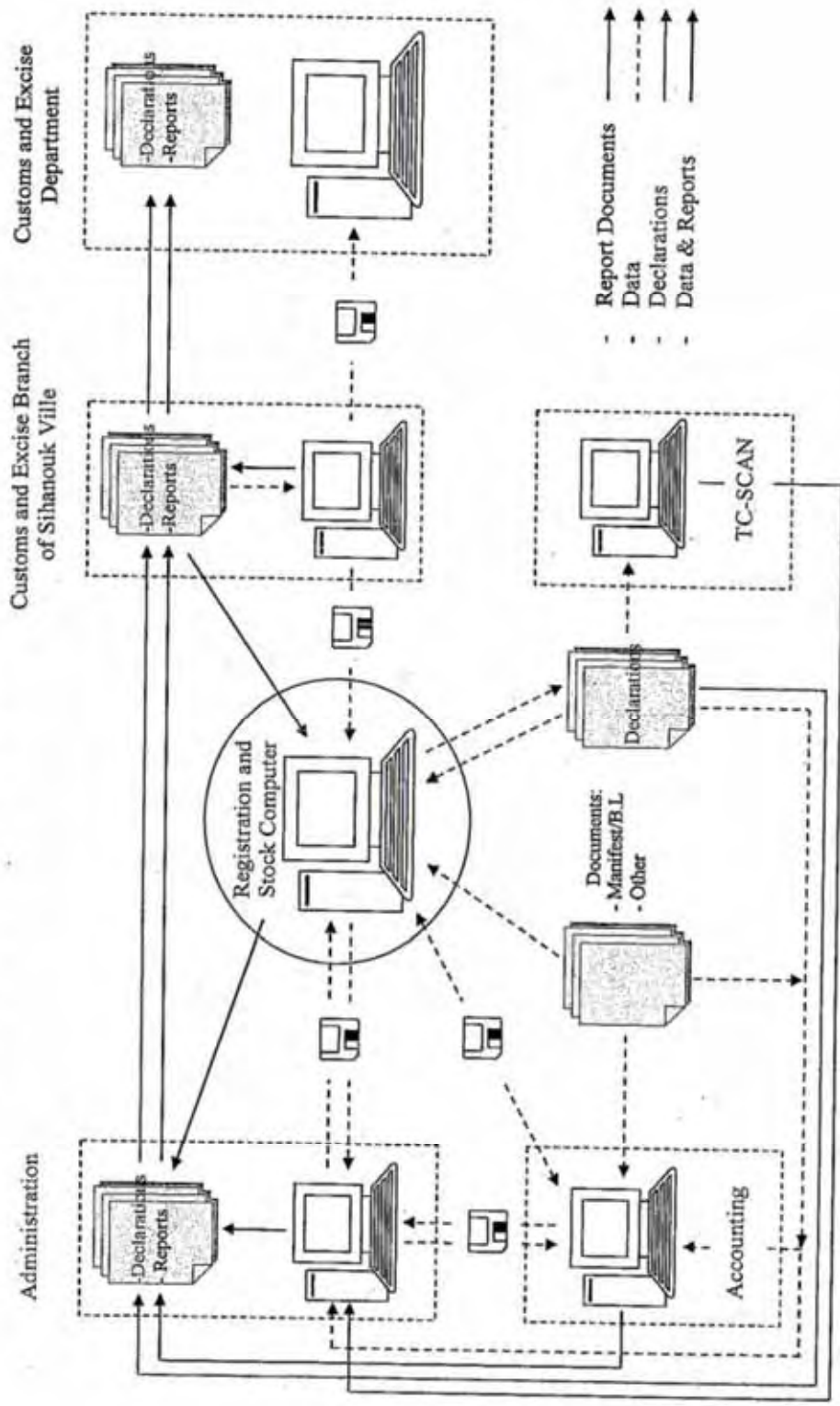
2 Customs and Excise Checkpoint of Sihanouk Ville Port

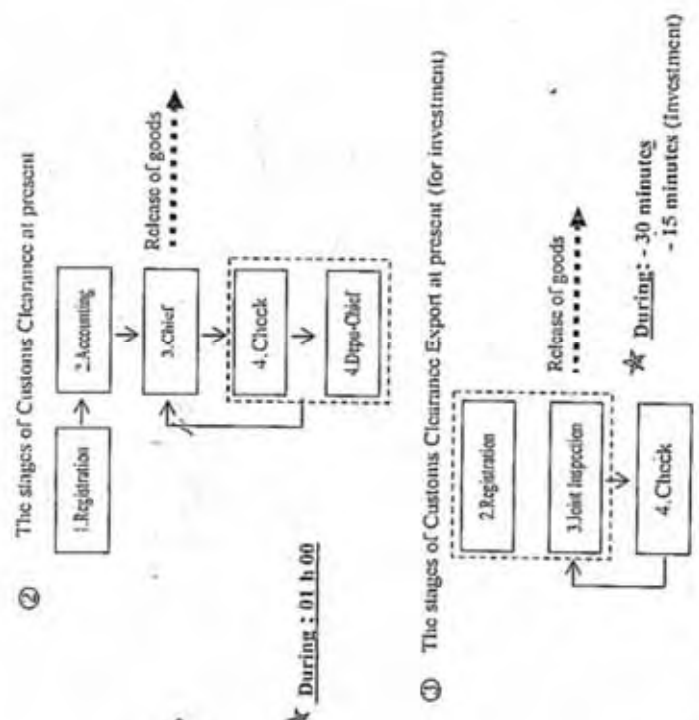
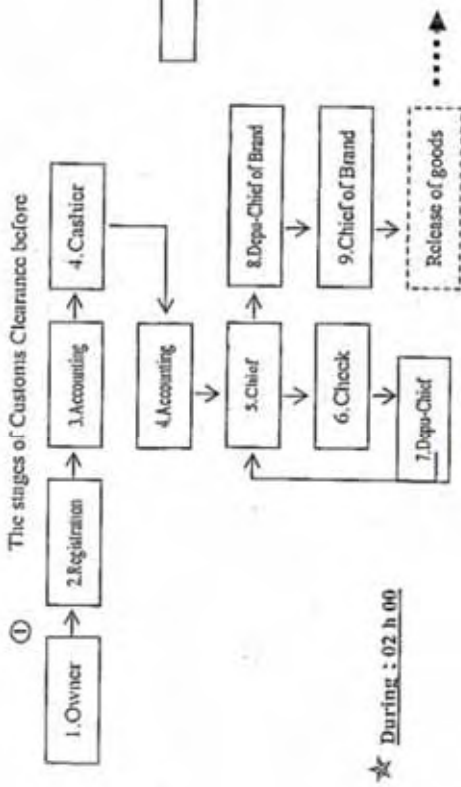
Flow of Export Clearance Procedures



4 Customs and Excise Checkpoint of Sihanouk Ville Port

Computer Process of
Customs and Excise of Sihanouk Ville Port (2004)





★ -Before the Customs Clearance had 9 stages and took 2 hour. Now it reduces to 5 stages and took 30 minutes for importation and 2 stages for investment, 15minutes only.

★ -The delay was due to the unskilled and unprofessional work of the declarants, making the filling in the Customs declaration incorrectly and slowly.

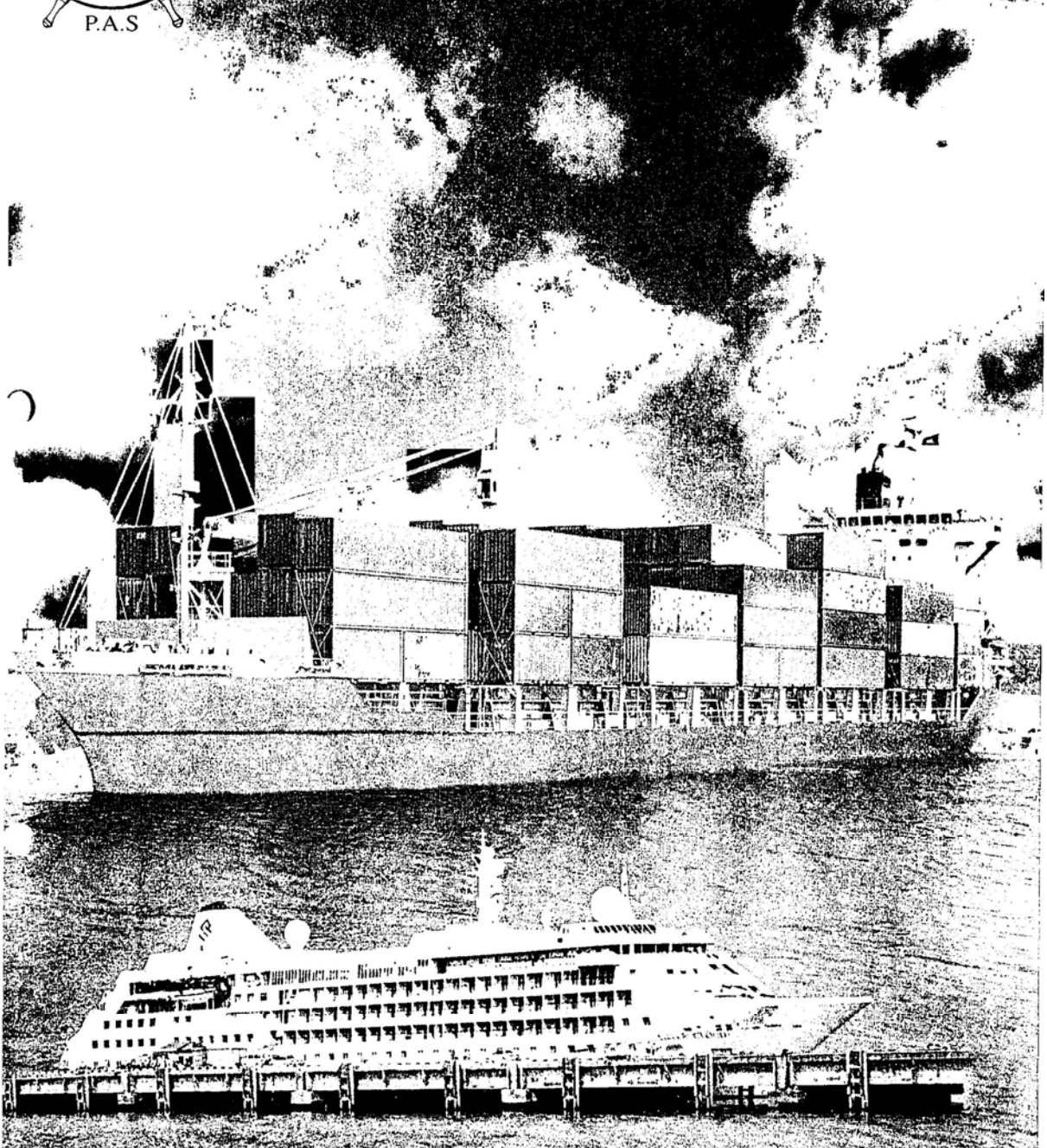
関連資料 5

シアヌークビル港パンフレット
(Sihanoukville Autonomous Port)



កំពង់ផែស្វយ័តស្រុកក្រុងស៊ីហ្គែន

SIHANOUKVILLE AUTONOMOUS PORT



Tel : (855) 34 933 416 / 34 934 015

Fax : (855) 34 933 693

E-mail : market@pas.gov.kh

pasplan@pas.gov.kh

seaport@camnet.com.kh

Website : www.pas.gov.kh

ចំពោះ ក្រុងស៊ីហ្គែន ព្រះរាជាណាចក្រកម្ពុជា

Phnom Penh, Sihanoukville city, Kingdom of Cambodia



O . គោលនយោបាយដឹកនាំ

MISSION STATEMENT

N . សេចក្តីផ្តើម

INTRODUCTION

T . មធ្យោបាយ សេវាកម្ម

PORT 'S FACILITIES

E . បណ្តាញដឹកជញ្ជូន

TRANSPORTATION NETWORK

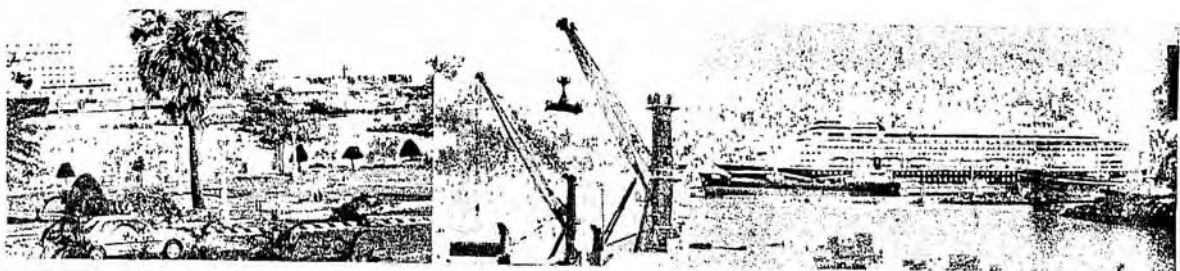
N . ស្ថិតិទំនិញឆ្លងកាត់ដែ

STATISTIC OF CARGO THROUGHPUT

T . គោលនយោបាយអភិវឌ្ឍន៍

DEVELOPMENT POLICY

S



ពិធីសម្ពោធបើកការដ្ឋានសាងសង់ ចំណតផ្ទៃក្នុងតែន័រ
 ក្រោមអធិបតីភាព សម្តេច ហ៊ុន សែន នាយករដ្ឋមន្ត្រី
 នៃរាជរដ្ឋាភិបាលកម្ពុជា ទិវាពលកម្មអន្តរជាតិ
 ១ឧសភា ឆ្នាំ ២០០២



THE GROUND BREAKING CEREMONY FOR THE SIHANOUKVILLE PORT URGENT REHABILITATION PROJECT, CIVIL WORK FOR CONTAINER TERMINAL PRESIDED OVER BY H.E SAMDECH HUN SEN, PRIME MINISTER OF THE ROYAL GOVERNMENT OF CAMBODIA

(01-05-2002)

ក្រុមប្រឹក្សាភិបាល

BOARD OF DIRECTORS



H.E LOU KIMCHHUN
Chairman & C.E.O



E CHHUN SIRUN
(Member)



H.E SAM SOK
(Member)



H.E SEAN VISOTH
(Member)



Mr SAM BUNHENG
(Member)



Mr SUTH DARA
(Member)



Mr NHIM VUT
(Member)

គោលនយោបាយដឹកនាំ

ដើម្បីរួមចំណែកបំរើគោលនយោបាយ របស់រាជរដ្ឋាភិបាលកម្ពុជា

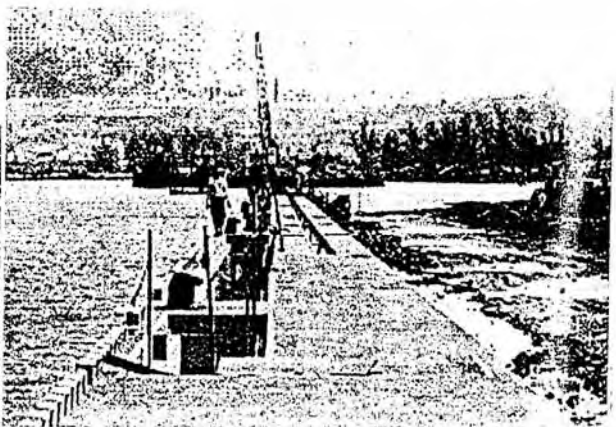
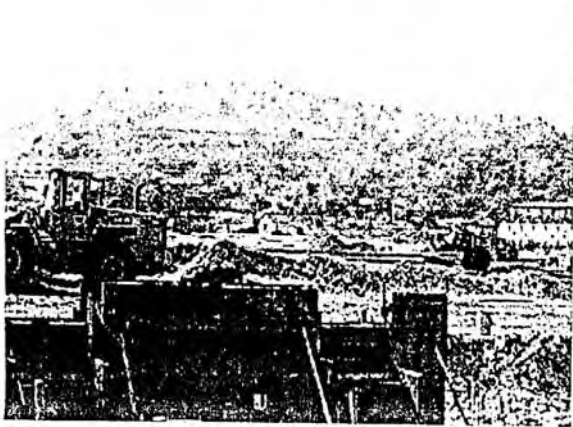
មានកម្មវិធីដឹកនាំដូចខាងក្រោម ៖

- ធ្វើឯកជនភាវូបនីយកម្មដោយខ្លួនឯងលើគ្រប់វិស័យ។
- ជំរុញប្រើប្រាស់ឱ្យអស់លទ្ធភាពលើធនធានហេដ្ឋារចនាសម្ព័ន្ធ
លមានស្រាប់និងបង្កើនប្រសិទ្ធភាពផលិតកម្ម។
- ធានាគណនេយ្យភាព និងនយោបាយទន់ភ្លន់ជាមួយអតិថិជន។
- ធានាឱ្យមានដំណើរការគ្រប់គ្រងតាមប្រព័ន្ធ IT ជាបណ្តើរៗ។
- សកលភាវូបនីយកម្មជាបណ្តើរៗក្នុងតំបន់។

Mission Statement

In order to contribute in serving the policy of the royal government of Cambodia, PAS has laid down its management policy as follows :

- Conduct a self-privatization on all fields.
- Improve the utilization of existing infrastructures with utmost efforts and strengthen its production effectiveness.
- Guarantee the accountability and modest policy with all customers.
- Guarantee a gradual management process in accordance with the information technology (IT).
- Gradually step in the globalization as those of the regional countries.



សេចក្តីផ្តើម

កំពង់ផែស្វយ័តក្រុងព្រះសីហនុ (កសស) ជាកំពង់ផែសមុទ្រទឹកជ្រៅតែមួយគត់នៃព្រះរាជាណាចក្រកម្ពុជា ស្ថិតនៅឆក់កំពង់សោយនៃឈូងសមុទ្រថៃ មានជួរភ្នំ និងកោះជាច្រើនជារនាំងធម្មជាតិការពារ ជៀសផុតពីព្រះជំរះ ជាអំណោយផលដល់សកម្មភាពនាវាចរនិងដំណើរការអាជីវកម្មសេវាកម្ម។ កសស ជាច្រកសេដ្ឋកិច្ចដ៏សំខាន់បំផុតនិងអនាគតជាស្នូលនៃតំបន់អភិវឌ្ឍន៍ឧស្សាហកម្ម ពាណិជ្ជកម្មនិងទេសចរណ៍។ កសស ចែកជា៖

តំបន់ចាស់ : ជាផ្នែកបានកសាងនៅឆ្នាំ 1956 និងចាប់ផ្តើមធ្វើអាជីវកម្មនៅ ឆ្នាំ 1960 ។ ផែនទីមានបណ្តោយ 290m ទទឹង 28 m អាចឱ្យនាវា ចូលចតធ្វើអាជីវកម្មបានទាំងសងខាង។ ផ្នែកខាងក្រៅមានជំរៅទឹក 8,50m និងផ្នែកខាងក្នុងមានជំរៅទឹក 7,50m អាចឱ្យនាវាចូលចតផ្ទេរផ្ទុកទំនិញបាន 04 គ្រ. ក្នុងពេលតែមួយនិង មានឃ្នាំងចំនួន 02 ទំហំ 12.000m² អាចស្តុកទំនិញបាន 28.000t ។ បច្ចុប្បន្នផែនការបំប្លែងការផ្ទេរផ្ទុកភាគច្រើនជាទំនិញទូទៅដែលខាងមុខនេះ នឹងប្រែក្លាយទៅជាផែនការទេសចរណ៍។

តំបន់ថ្មី : ជាផ្នែកចាស់សាងសង់នៅឆ្នាំ 1966 និងចាប់ផ្តើមប្រើប្រាស់នៅឆ្នាំ 1969 មានបណ្តោយប្រវែង 350m ជំរៅទឹកបច្ចុប្បន្ន 7,50m អាចឱ្យនាវាចូលចតបាន 03 គ្រ. ។ ផែនទីភ្ជាប់ដោយឃ្នាំងចំនួន 03 ខ្នងមានផ្ទៃសរុប 24.000m² អាចស្តុកទំនិញបាន 56.000t ។ បច្ចុប្បន្នផែនទីកំពុងសាងសង់បន្តជំហានទីមួយប្រវែង 240m ដោយរៀបចំជាចំណតផែកុងតឺន័រមានជំរៅទឹក 11,50m និងផ្ទៃទីលានទំហំ 6,50ha នឹងបញ្ចប់ជាស្ថាពរអំឡុងខែតុលាឆ្នាំ 2004 ។

តំបន់ជម្រក :

ក- ផែនទី : ជាផែនទីយូលទៅក្នុងសមុទ្រមានបណ្តោយ 53 m ទទឹង 5m ជំរៅ ទឹក 4,20m សង់ក្នុង ចន្លោះឆ្នាំ 1975-1978 ។

ខ- ផែនទី : ផែនទីអាចឱ្យនាវាជំរៅទឹក 6m ចូលចតដើម្បីបូមប្រេងដោយចង ភ្ជាប់នាវាទៅពោងទាំង 04 ។

គ- ផែនទីម៉ូតូ : ក្រុមហ៊ុនសូគីមិចនិងក្រុមហ៊ុនម៉ារុបេនីរបស់ជប៉ុនបានកសាងផែនទីបូមប្រេងខ្នាតអន្តរជាតិមួយដែលមានប្រវែង 200m អាចឱ្យនាវាដែលមានជំរៅទឹក 9,20m ចូលចតនិងផ្ទេរផ្ទុកប្រេងឥន្ធនៈប្រកបដោយសុវត្ថិភាព ។

INTRODUCTION

The Sihanoukville Autonomous Port (PAS) which is the sole deep sea port of the Kingdom of Cambodia is located in the bay of Kompong Som of the gulf of Thailand. It is surrounded by ranges of mountains and islands as natural protective walls preventing navigation activities, port operation and service performances from violent storms. PAS is also the most important economic outlet and the future core of commercial, industrial and tourism development of Cambodia. PAS has divided its berthing facilities into :

Old Port

The Old Port is a jetty which was constructed in 1956 and started operational in 1960. This jetty is 290m long by 28m wide and can accommodate vessels at both sides. The exterior berth is 8,50m depth, while the interior berth is 7,50m depth and can accommodate four vessels at the same time. This jetty consists of two warehouses with the total area of 12,000m² with a maximum storage capacity of 28,000t of goods. This jetty which is presently being used for offloading and loading general cargoes will be transformed to be a passenger terminal.

New quay

The New Quay which was constructed in 1966 and started operational in 1969 is 350m long by 7,50m depth and can accommodate three vessels. This quay is linked with three warehouses with the total area of 24,000m² and a maximum storage capacity of 56,000t of goods. It is presently under the ongoing construction of the first step 240m long container terminal with 11,50m depth and 6,50ha of container yard. This project is expected to complete in October 2004.

Oil port

- A- stone wharf: It is a jetty with 53m long by 5m wide and 4,20m depth which was constructed between 1975-1978.
- B- Pontoon: It is a berthing facility being used for berthing alongside a vessel with 6m draft in order to pump oil product by mooring vessel to the four pontoons.
- C-Sokimex's port: Sokimex and Marubeni(a company from Japan) jointly constructed a 200m long oil terminal with international standard which is able to accommodate oil tankers with 9,50m draft to offload and load oil product with safety.

