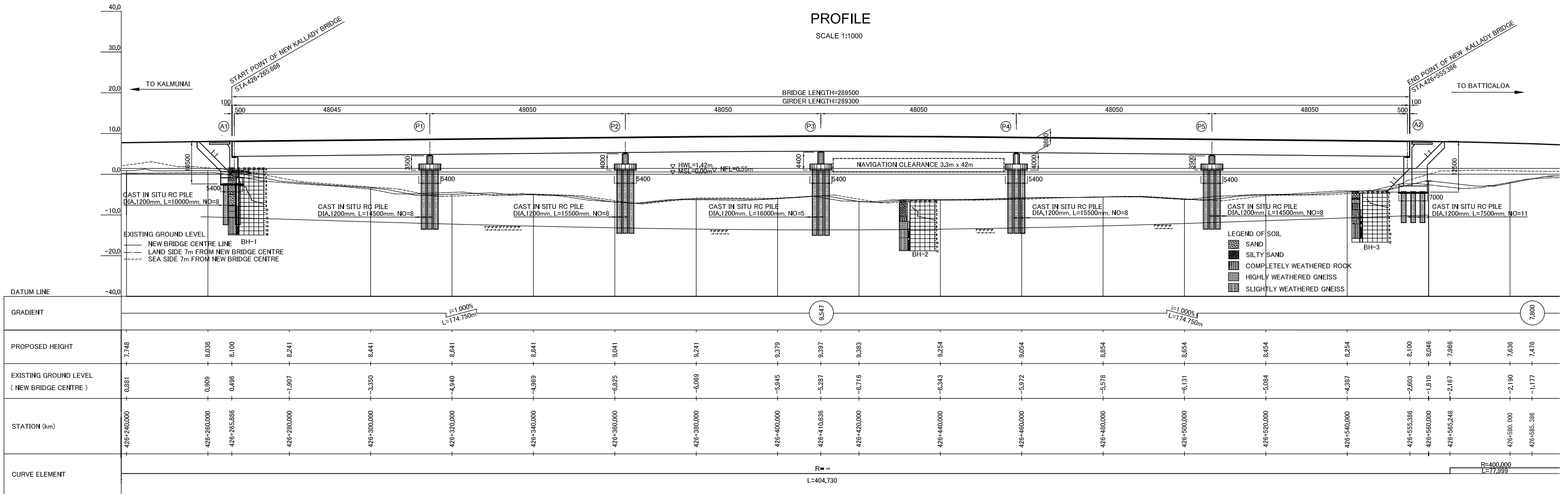


F. NEW KALLADY BRIDGE

GENERAL VIEW OF NEW KALLADY BRIDGE (MAIN BRIDGE)

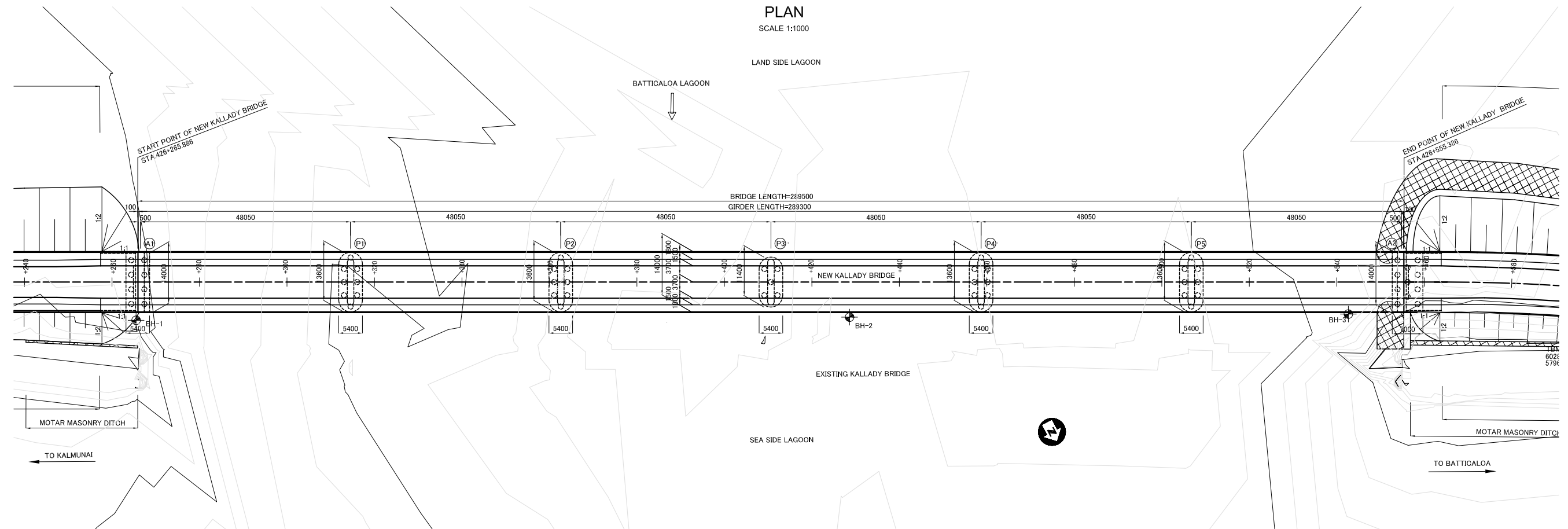
PROFILE

SCALE 1:1000



PLAN

SCALE 1:1000



THE DEMOCRATIC SOCIALIST REPUBLIC OF SRI LANKA
MINISTRY OF HIGHWAYS



JAPAN INTERNATIONAL COOPERATION AGENCY
 ORIENTAL CONSULTANTS CO., LTD.
 NIPPON KOEI CO., LTD.
 JAPAN ENGINEERING CONSULTANTS CO., LTD.

No	REVISION	DATE

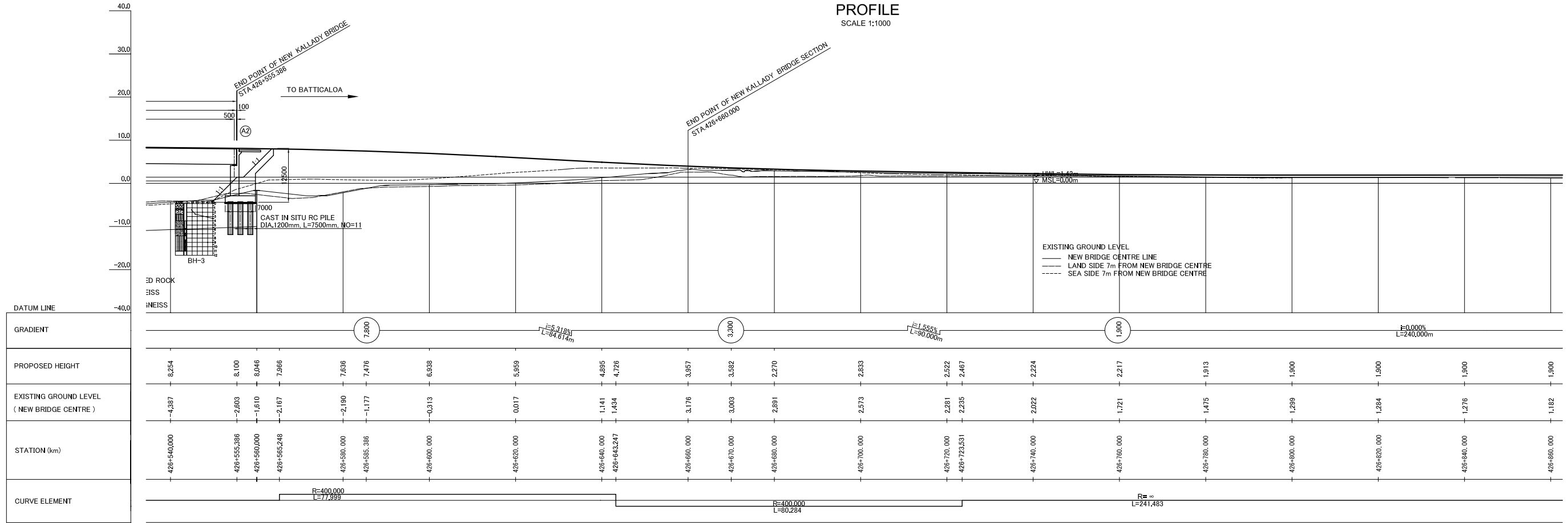
THE PRO-POOR EASTERN INFRASTRUCTURE DEVELOPMENT PROJECT

GENERAL VIEW OF NEW KALLADY BRIDGE
(MAIN BRIDGE)

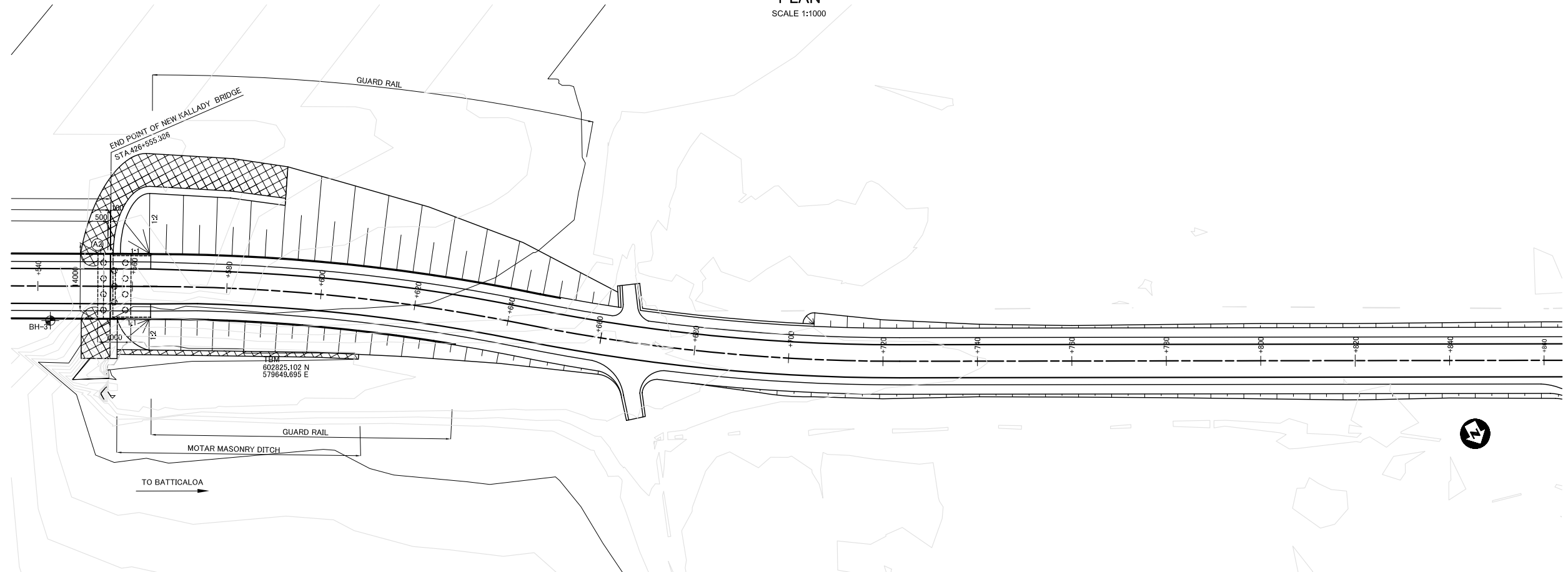
DESIGNED BY:	
CHECKED BY:	
APPROVED BY:	
DWG. NO.	F-01

GENERAL VIEW OF NEW KALLADY BRIDGE (BATTICALOA SIDE APPROACH ROAD)

PROFILE
SCALE 1:1000



PLAN
SCALE 1:1000



THE DEMOCRATIC SOCIALIST REPUBLIC OF SRI LANKA
MINISTRY OF HIGHWAYS



JICA JAPAN INTERNATIONAL COOPERATION AGENCY

ORIENTAL CONSULTANTS CO., LTD.

NIPPON KOEI CO., LTD.

J.E.C. JAPAN ENGINEERING CONSULTANTS CO., LTD.

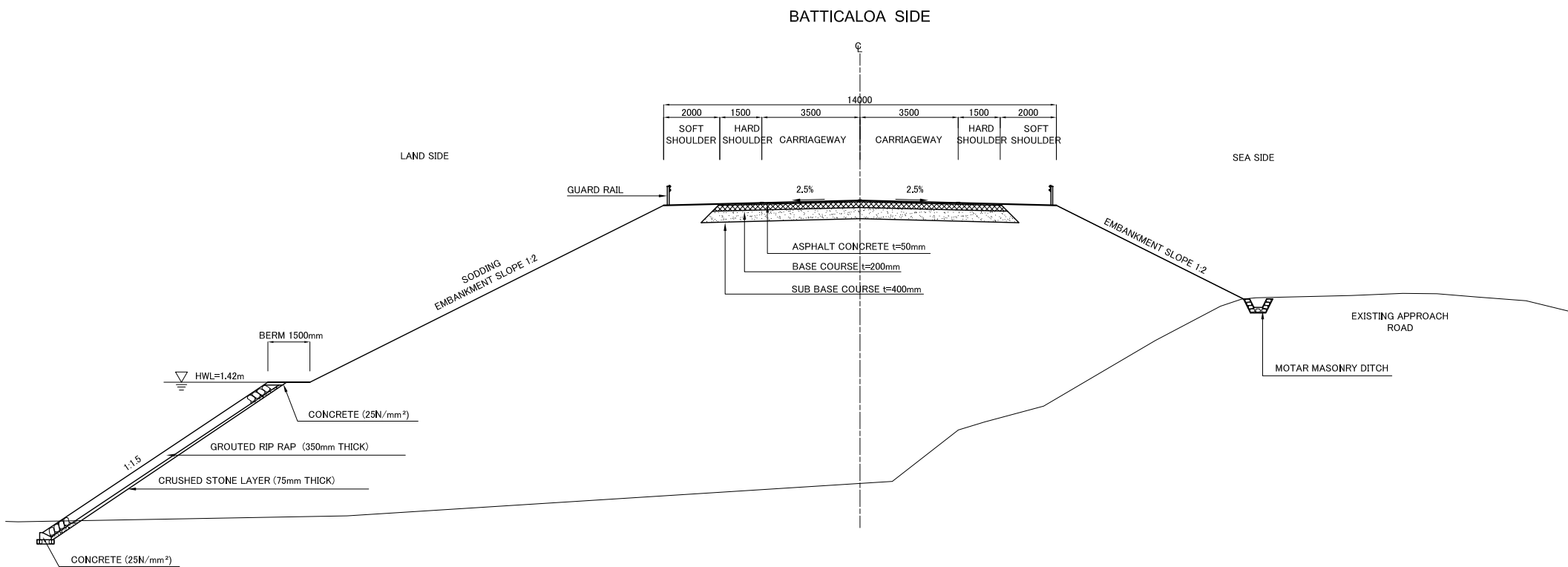
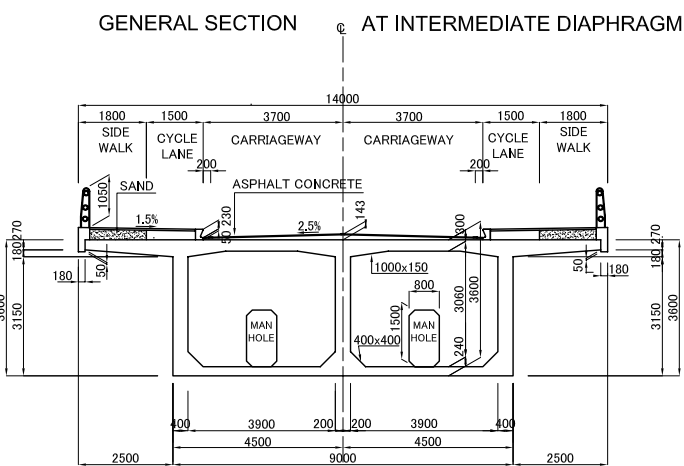
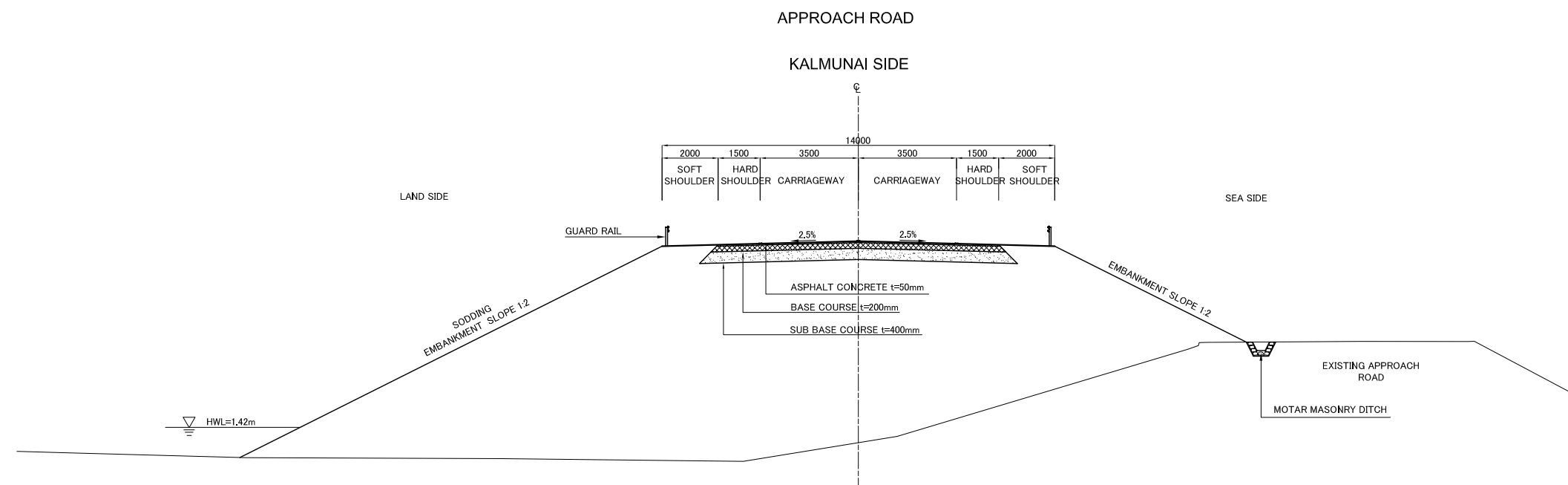
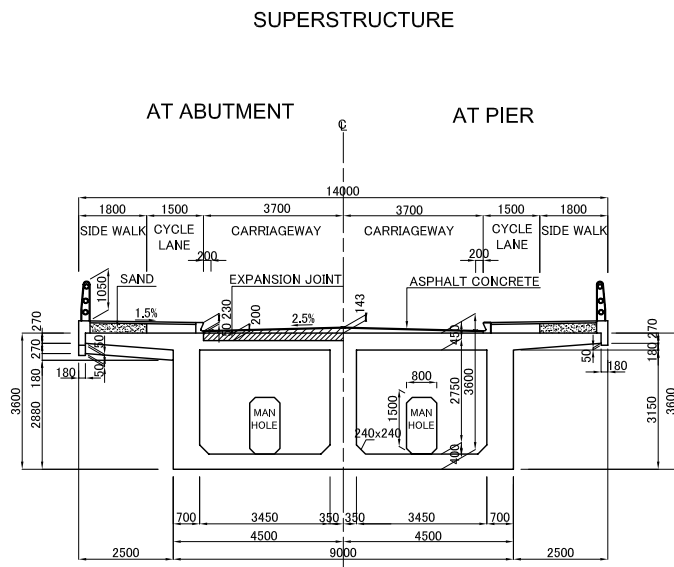
THE PRO-POOR EASTERN INFRASTRUCTURE DEVELOPMENT PROJECT

GENERAL VIEW OF NEW KALLADY BRIDGE
(BATTICALOA SIDE APPROACH ROAD)

No	REVISION	DATE

DESIGNED BY:	
CHECKED BY:	
APPROVED BY:	
DWG. NO.	F-03

TYPICAL CROSS SECTION
SCALE 1:200



THE DEMOCRATIC SOCIALIST REPUBLIC OF SRI LANKA
MINISTRY OF HIGHWAYS



JAPAN INTERNATIONAL COOPERATION AGENCY
 ORIENTAL CONSULTANTS CO., LTD.
 NIPPON KOEI CO., LTD.
 JAPAN ENGINEERING CONSULTANTS CO., LTD.

No	REVISION	DATE

THE PRO-POOR EASTERN INFRASTRUCTURE DEVELOPMENT PROJECT

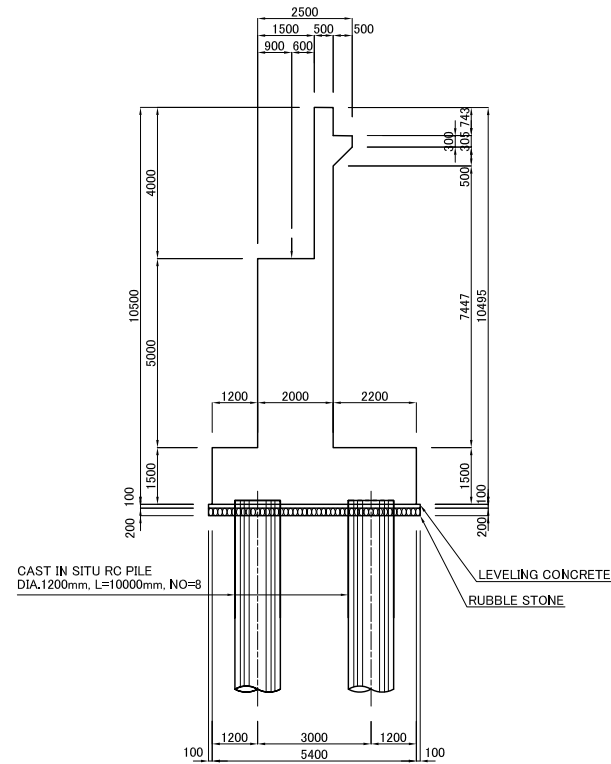
TYPICAL CROSS SECTION

DESIGNED BY:	
CHECKED BY:	
APPROVED BY:	
DWG. NO.	F-04

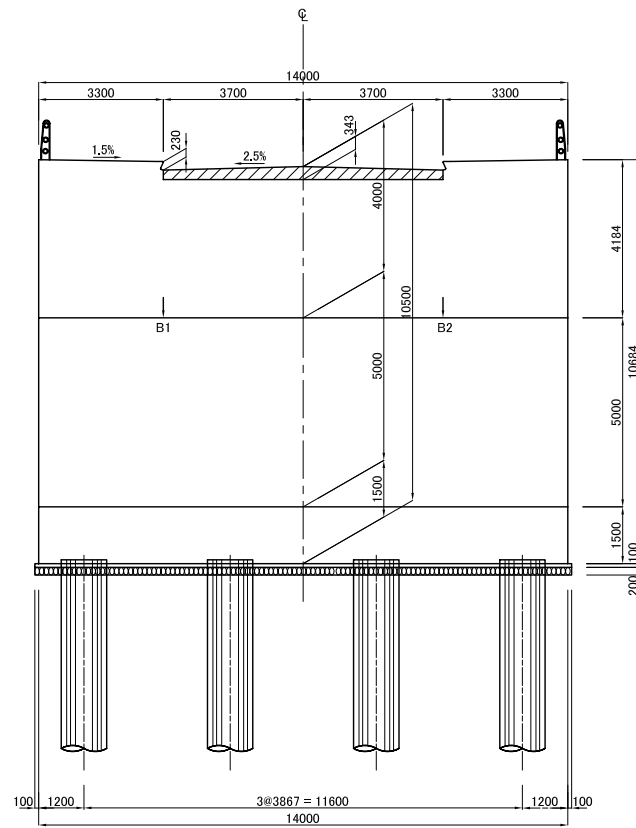
GENERAL PLAN OF A1 ABUTMENT

SCALE 1:200

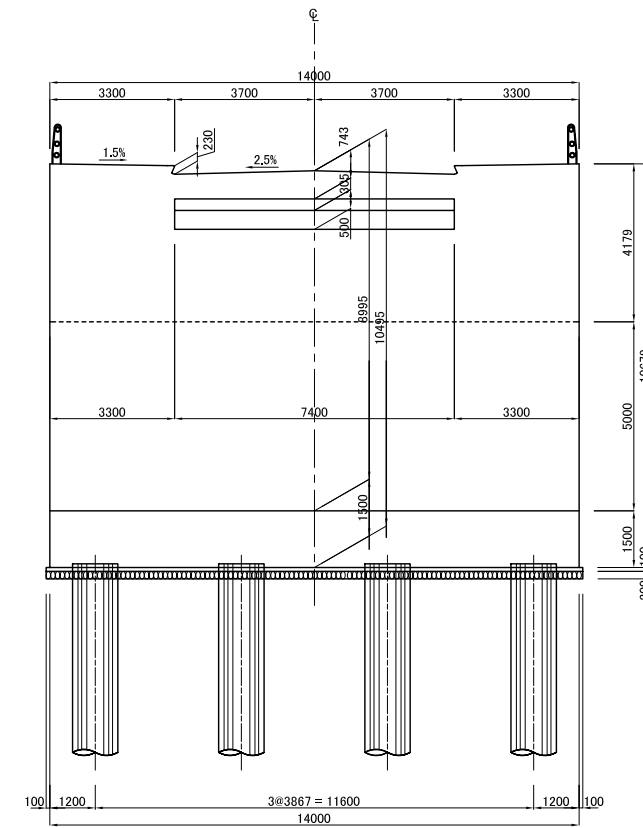
1-1



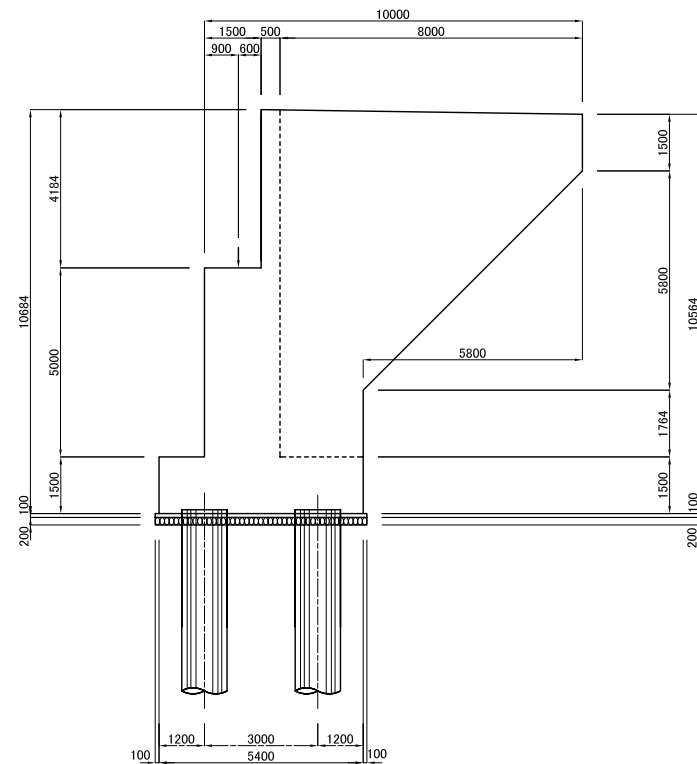
2-2



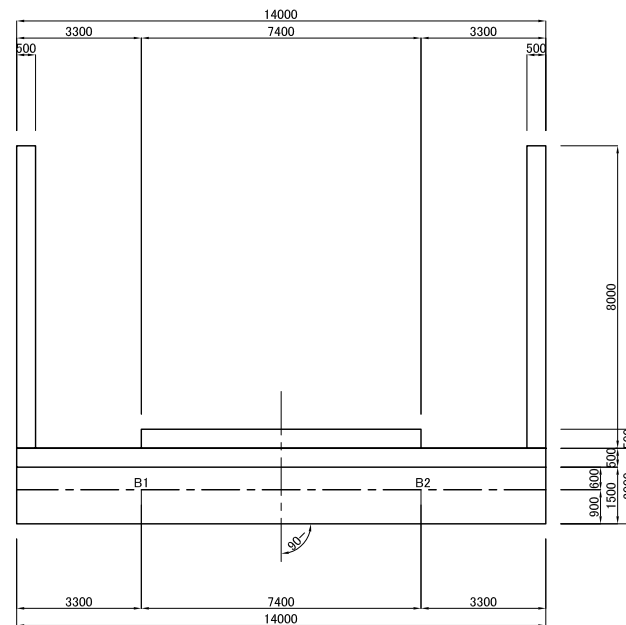
3-3



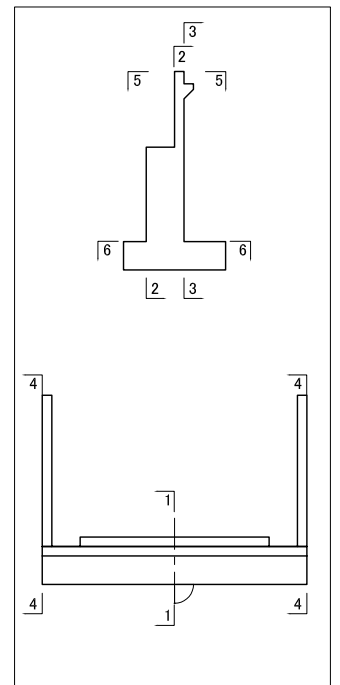
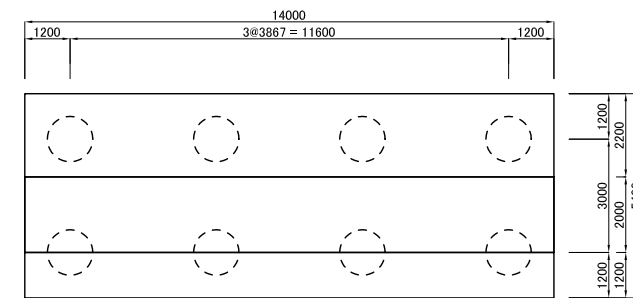
4-4



5-5



6-6



LOCATION DIAGRAM

THE DEMOCRATIC SOCIALIST REPUBLIC OF SRI LANKA
MINISTRY OF HIGHWAYS



JICA JAPAN INTERNATIONAL COOPERATION AGENCY
ORIENTAL CONSULTANTS CO., LTD.
NIPPON KOEI CO., LTD.
J.E.C. JAPAN ENGINEERING CONSULTANTS CO., LTD.

No	REVISION	DATE

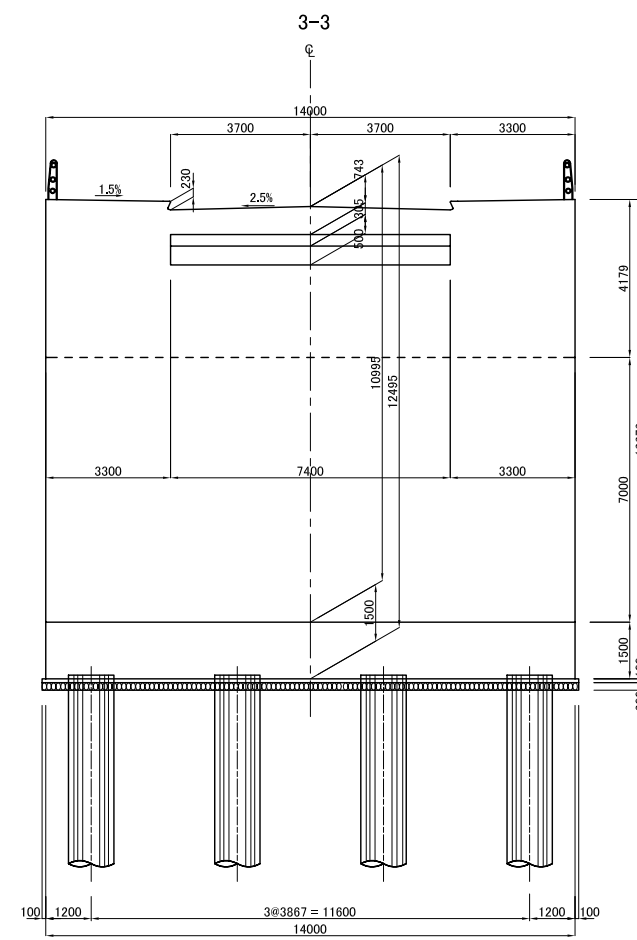
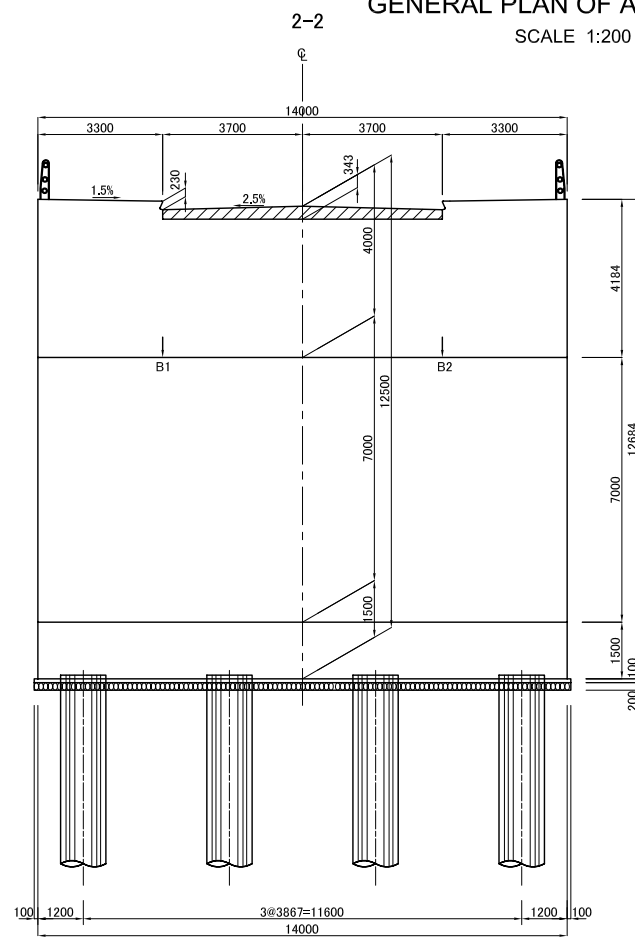
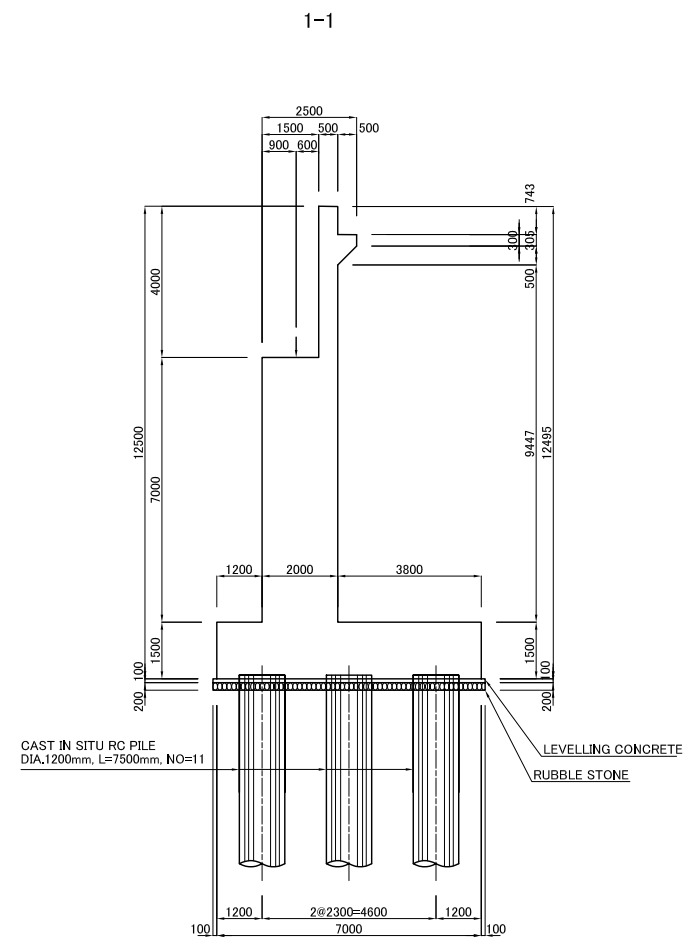
THE PRO-POOR EASTERN INFRASTRUCTURE DEVELOPMENT PROJECT

 GENERAL PLAN OF A1 ABUTMENT

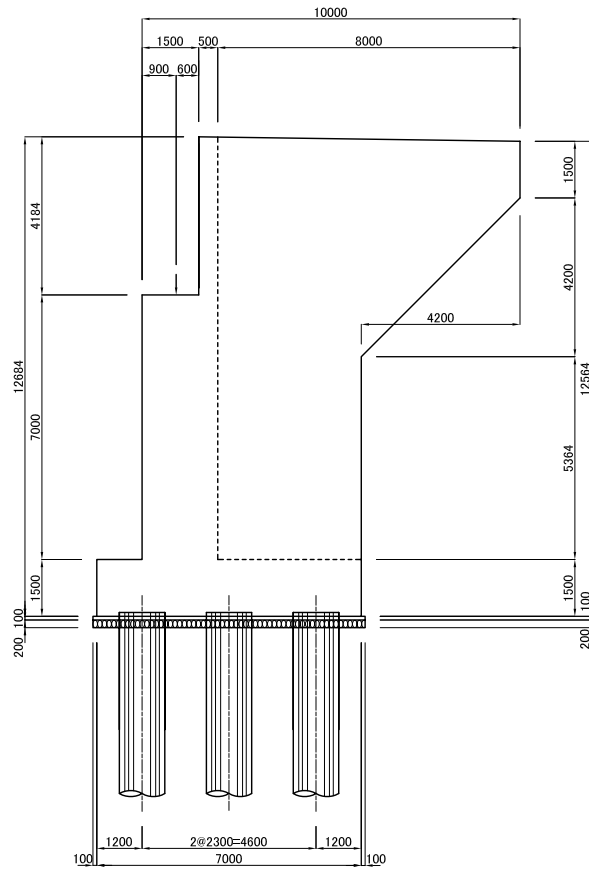
DESIGNED BY:	
CHECKED BY:	
APPROVED BY:	
DWG. NO.	F-05

GENERAL PLAN OF A2 ABUTMENT

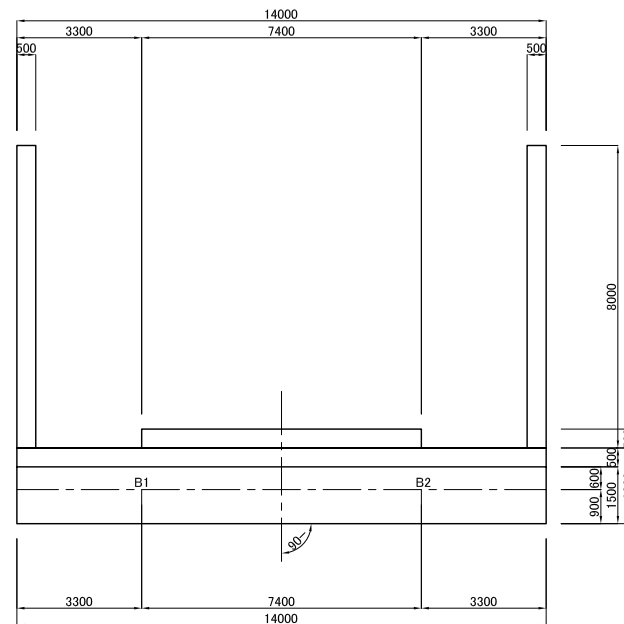
SCALE 1:200



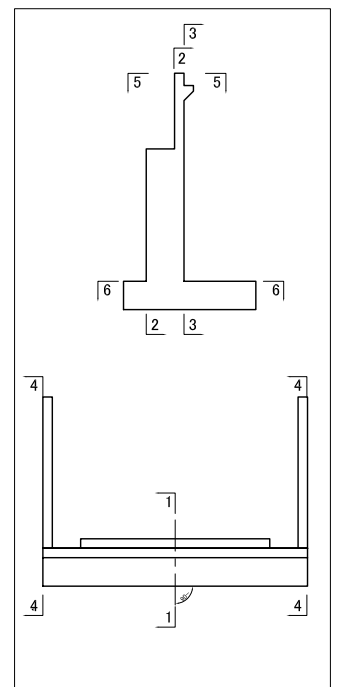
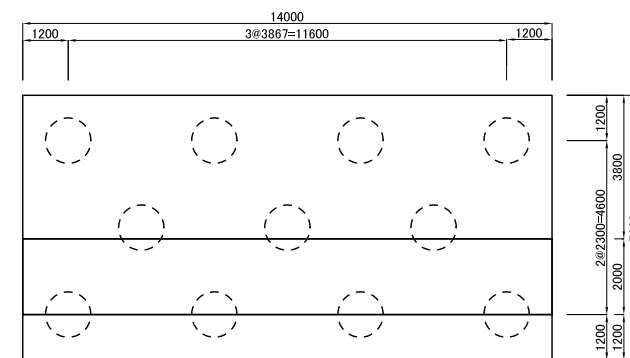
4-4



5-5



6-6



LOCATION DIAGRAM

THE DEMOCRATIC SOCIALIST REPUBLIC OF SRI LANKA
MINISTRY OF HIGHWAYS



jica JAPAN INTERNATIONAL COOPERATION AGENCY
ORIENTAL CONSULTANTS CO., LTD.
NIPPON KOEI CO., LTD.
J.E.C. JAPAN ENGINEERING CONSULTANTS CO., LTD.

No	REVISION	DATE

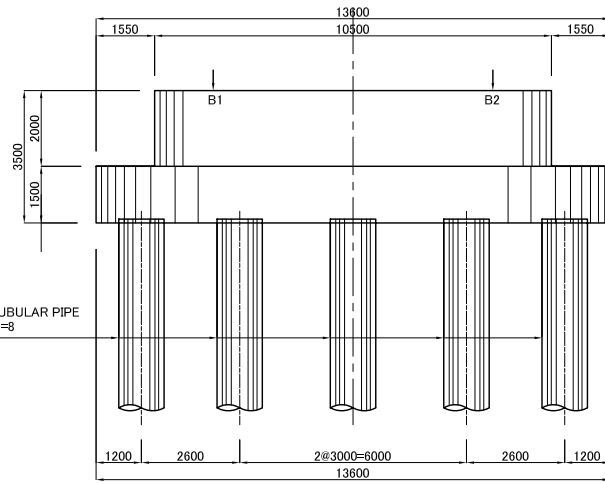
THE PRO-POOR EASTERN INFRASTRUCTURE DEVELOPMENT PROJECT

GENERAL PLAN OF A2 ABUTMENT

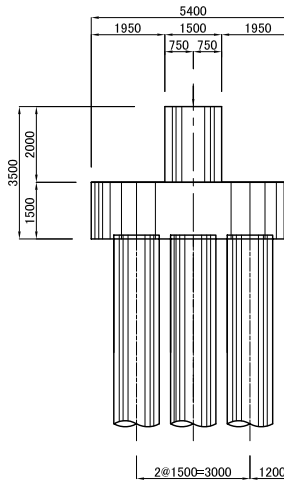
DESIGNED BY:	
CHECKED BY:	
APPROVED BY:	
DWG. NO.	F-06

GENERAL PLAN OF P1, P2, P4 AND P5 PIERS
SCALE 1:200

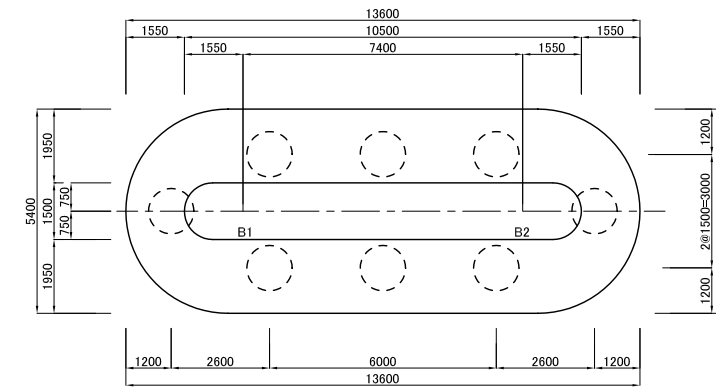
FRONT VIEW



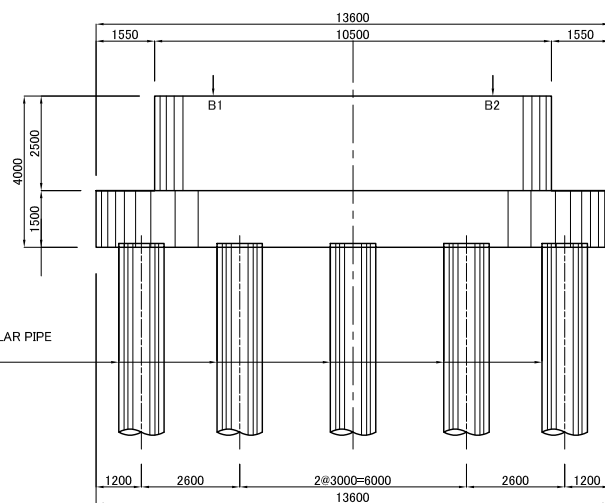
P1 AND P5 PIERS
SIDE VIEW



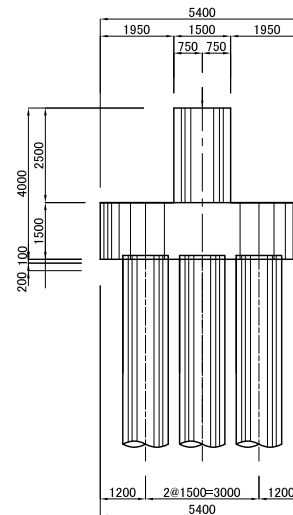
PLAN VIEW



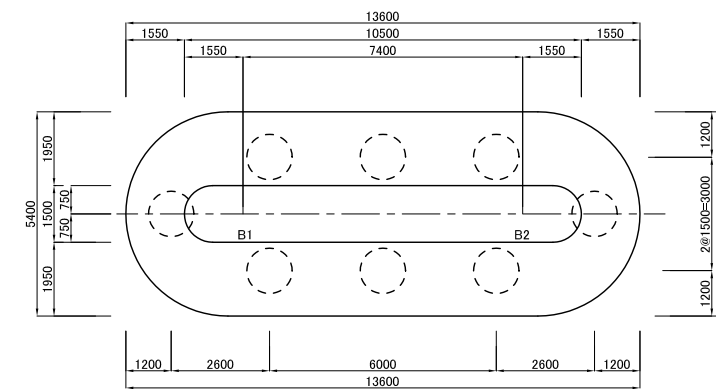
FRONT VIEW



P2 AND P4 PIERS
SIDE VIEW



PLAN VIEW



THE DEMOCRATIC SOCIALIST REPUBLIC OF SRI LANKA
MINISTRY OF HIGHWAYS



JICA JAPAN INTERNATIONAL COOPERATION AGENCY

ORIENTAL CONSULTANTS CO., LTD.

NIPPON KOEI CO., LTD.

J.E.C. JAPAN ENGINEERING CONSULTANTS CO., LTD.

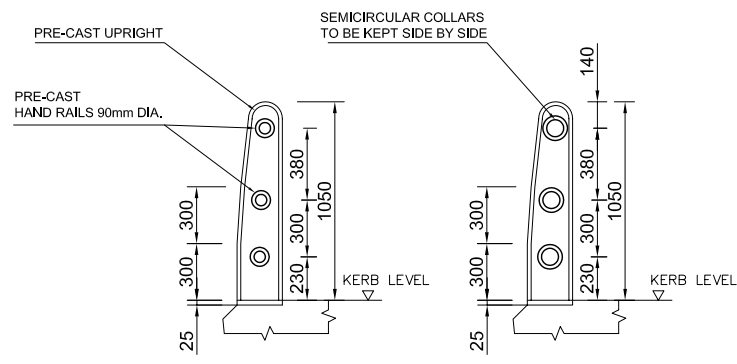
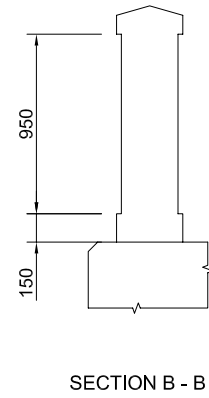
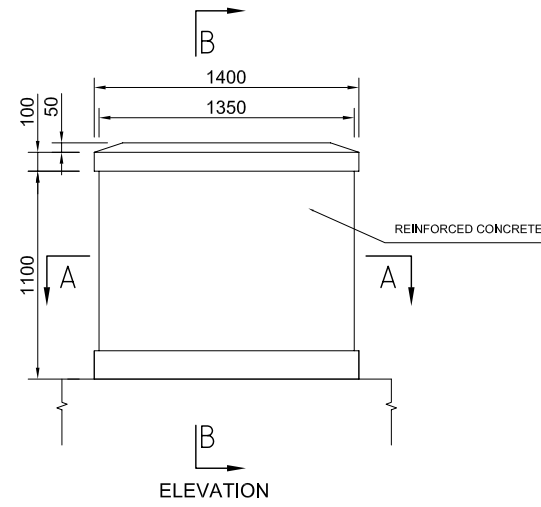
No	REVISION	DATE

THE PRO-POOR EASTERN INFRASTRUCTURE DEVELOPMENT PROJECT

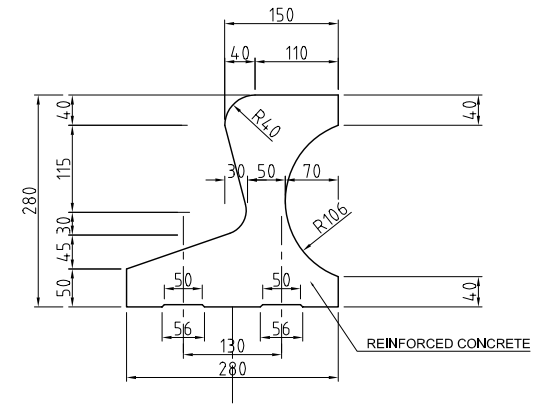
GENERAL PLAN OF P1,P2,P4 AND P5 PIERS

DESIGNED BY:	
CHECKED BY:	
APPROVED BY:	
DWG. NO.	F-07

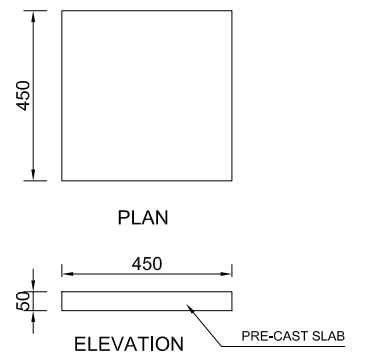
TYPICAL SECTIONS
(END PILLASTER, UP RIGHTS & FOOT WALK SLAB)



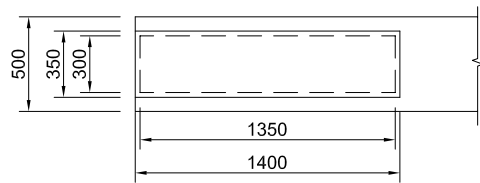
DETAIL OF PRE-CAST UP RIGHTS
SCALE: 1:20



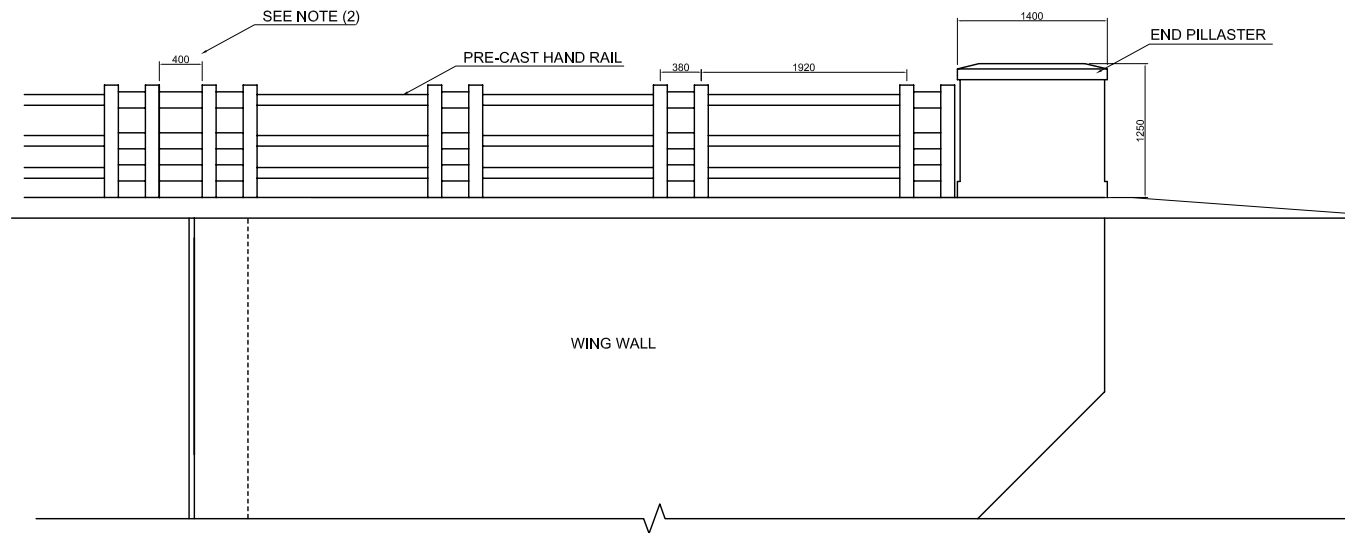
DETAIL OF KERB
SCALE: 1:10



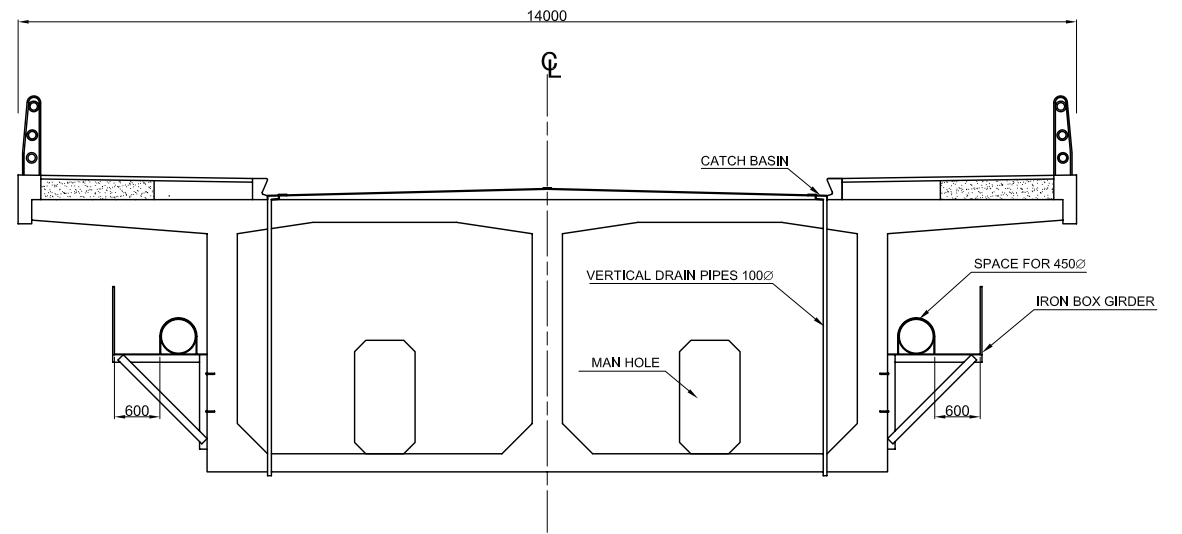
DETAIL OF FOOT WALK SLAB
SCALE: 1:10



SECTION A - A



ELEVATION
HAND RAIL AND END PILASTER



CROSS SECTION
DRAINAGE AND SERVICE LINE

NOTE:

- (1) ALL THE DIMENSIONS ARE GIVEN IN MILLIMETRES UNLESS OTHERWISE STATED.
- (2) 400mm SPACE FOR ROAD LIGHTING POLE ON ABUTMENT AND PIER

THE DEMOCRATIC SOCIALIST REPUBLIC OF SRI LANKA
MINISTRY OF HIGHWAYS



JICA JAPAN INTERNATIONAL COOPERATION AGENCY
ORIENTAL CONSULTANTS CO., LTD.
NIPPON KOEI CO., LTD.
JEE JAPAN ENGINEERING CONSULTANTS CO., LTD.

No	REVISION	DATE

THE PRO-POOR EASTERN INFRASTRUCTURE DEVELOPMENT PROJECT

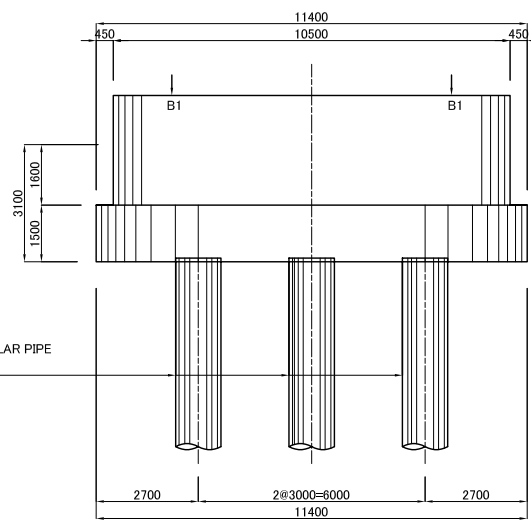
TYPICAL SECTIONS
(HAND RAIL END PILLASTER, UP RIGHTS & FOOT WALK SLAB)

DESIGNED BY:	
CHECKED BY:	
APPROVED BY:	
DWG. NO.	F-09

GENERAL PLAN OF P3 PIER

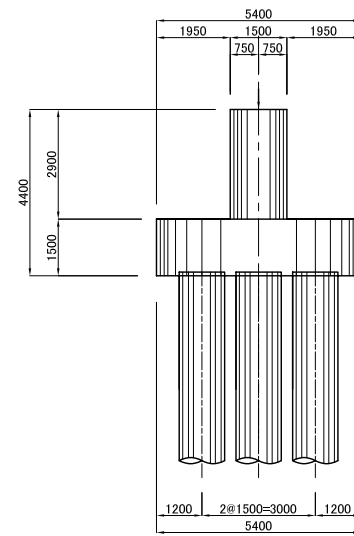
SCALE 1:200

FRONT VIEW

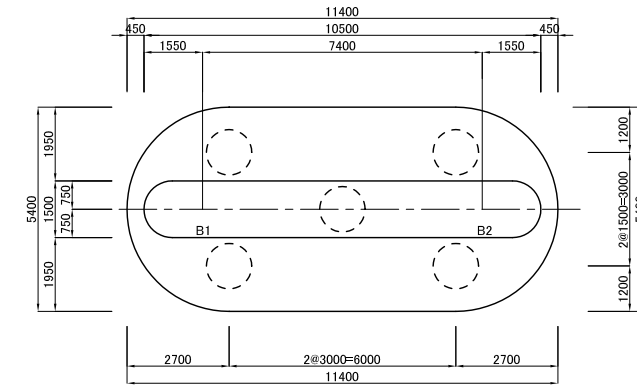


CAST IN SITU RC PILE
WITH PERMANENT STEEL TUBULAR PIPE
DIA.1200mm, L=16000mm, NO=5

P3 PIER
SIDE VIEW



PLAN VIEW



THE DEMOCRATIC SOCIALIST REPUBLIC OF SRI LANKA
MINISTRY OF HIGHWAYS



jica JAPAN INTERNATIONAL COOPERATION AGENCY

ORIENTAL CONSULTANTS CO., LTD.

NIPPON KOEI CO., LTD.

JEC JAPAN ENGINEERING CONSULTANTS CO., LTD.



No	REVISION	DATE

THE PRO-POOR EASTERN INFRASTRUCTURE DEVELOPMENT PROJECT

GENERAL PLAN OF P3 PIER

DESIGNED BY:

CHECKED BY:

APPROVED BY:

DWG. NO.

F-08