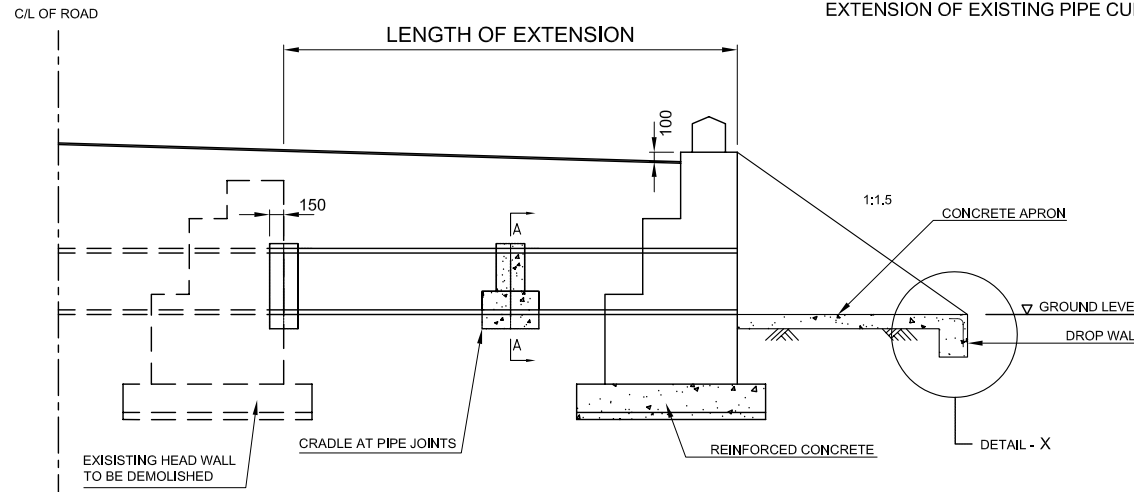
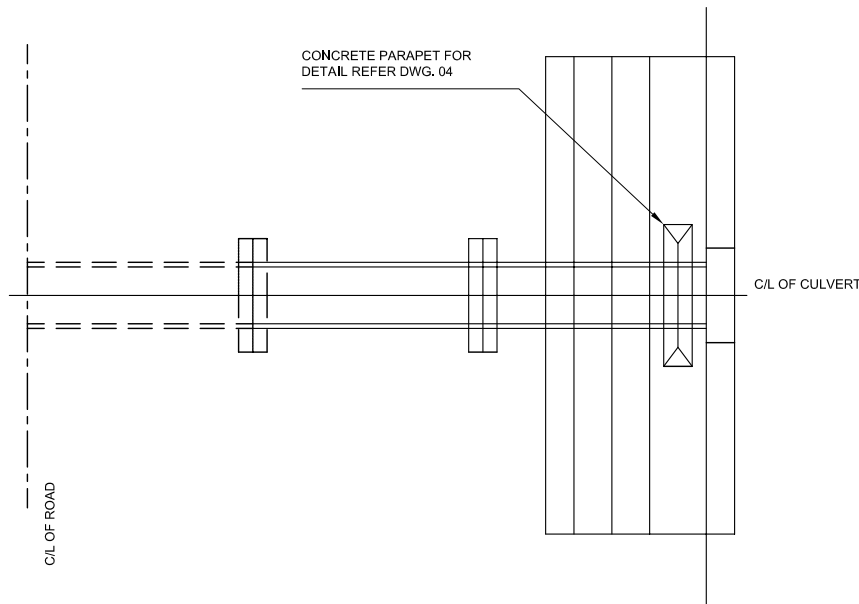
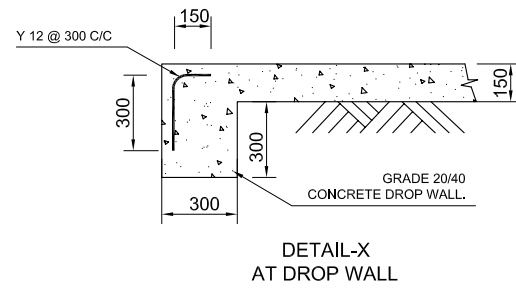
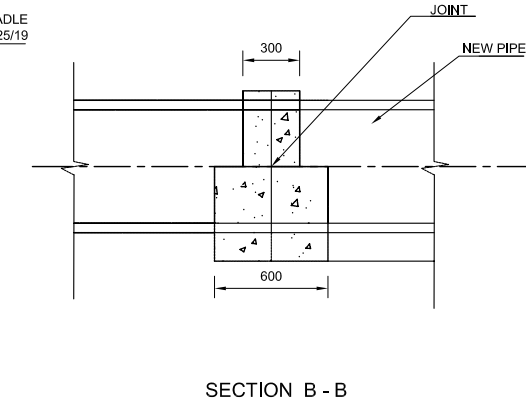
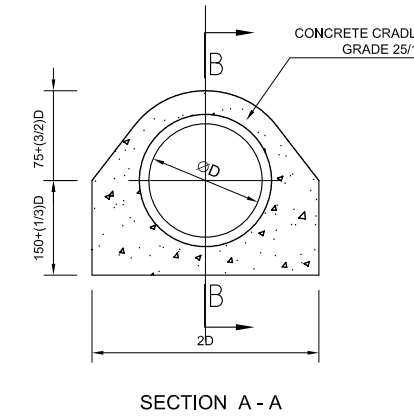


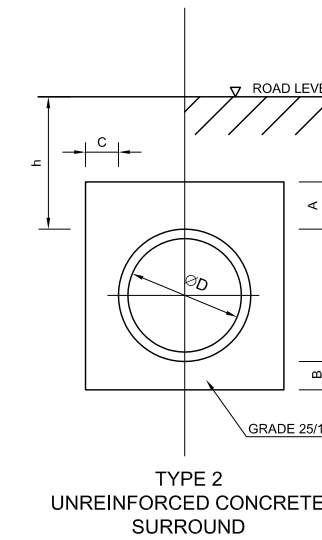
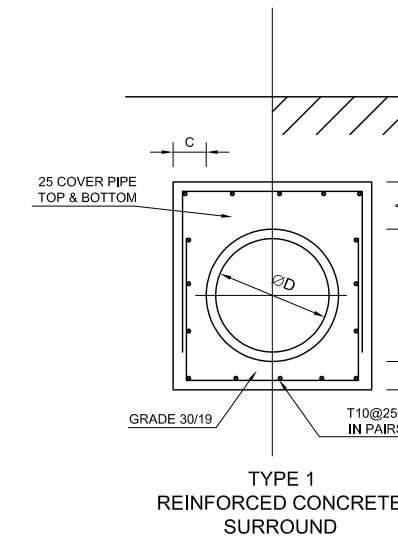
TYPICAL DETAILS OF EXTENSION (1)
IMPROVEMENT TYPE - E
EXTENSION OF EXISTING PIPE CULVERT



TYPICAL SECTION
SCALE: 1 : 80

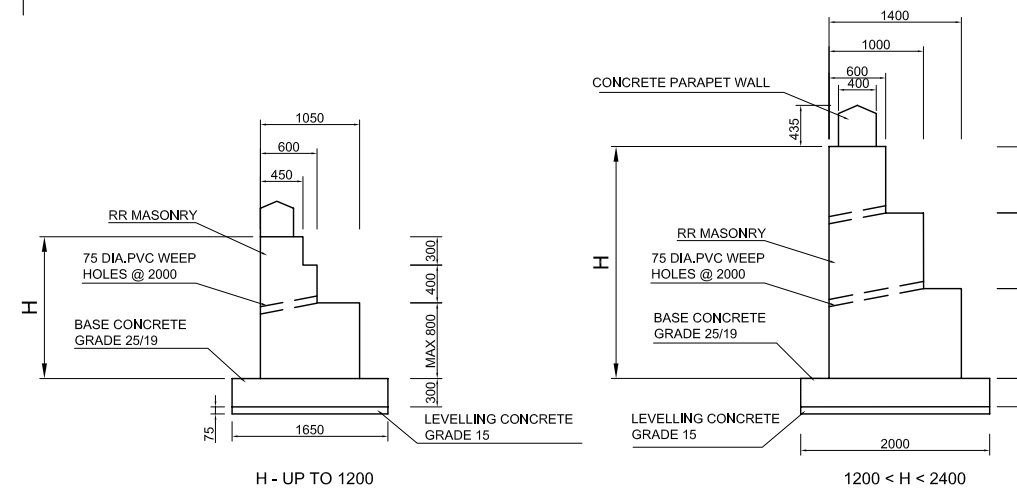


TYPICAL PLAN OF HEADWALL
SCALE: 1 : 80



NOTE :

- (1) ALL THE DIMENSIONS ARE GIVEN IN MILLIMETERS UNLESS OTHERWISE STATED.
- (2) ALL DIMENSIONS ARE PROVISIONAL. FINAL FIGURES SHALL BE CONFIRMED BY THE ACTUAL CONDITION DETAILED DESIGN.
- (3) FOUNDATION LEVEL BELOW INVERT LEVEL GIVEN IS AN INDICATIVE ONLY. THE ACTUAL LEVELS TO BE VERIFIED AFTER EXCAVATION OF FOUNDATION.
- (4) FIGURE OF HEAD WALLS ARE PER REFERENCE. ACTUAL FIGURE SHALL BE DESIDED TO SUIT SITE CONDITION.
- (5) PIPE SHALL BE LAID TO A GRADIENT 1 IN 200.
- (6) EXISTING ENCASUREMENT TO BE CAREFULLY REMOVED 150MM INSIDE FROM OUTER EDGE OF R.C.C. PIPE AND JOINED WITH NEW ENCASUREMENT.



TYPICAL DETAILS OF HEAD WALL
SCALE: 1:80

DIMENSIONS FOR REINFORCED AND UNREINFORCED CONCRETE SURROUNDS

D (mm)	A (mm)	B (mm)	C (mm)
450	250	150	175
600	250	150	175
900	275	175	200
1200	300	200	225

THE DEMOCRATIC SOCIALIST REPUBLIC OF SRI LANKA
MINISTRY OF HIGHWAYS



JICA JAPAN INTERNATIONAL COOPERATION AGENCY
ORIENTAL CONSULTANTS CO., LTD.
NIPPON KOEI CO., LTD.
J.E.C. JAPAN ENGINEERING CONSULTANTS CO., LTD.

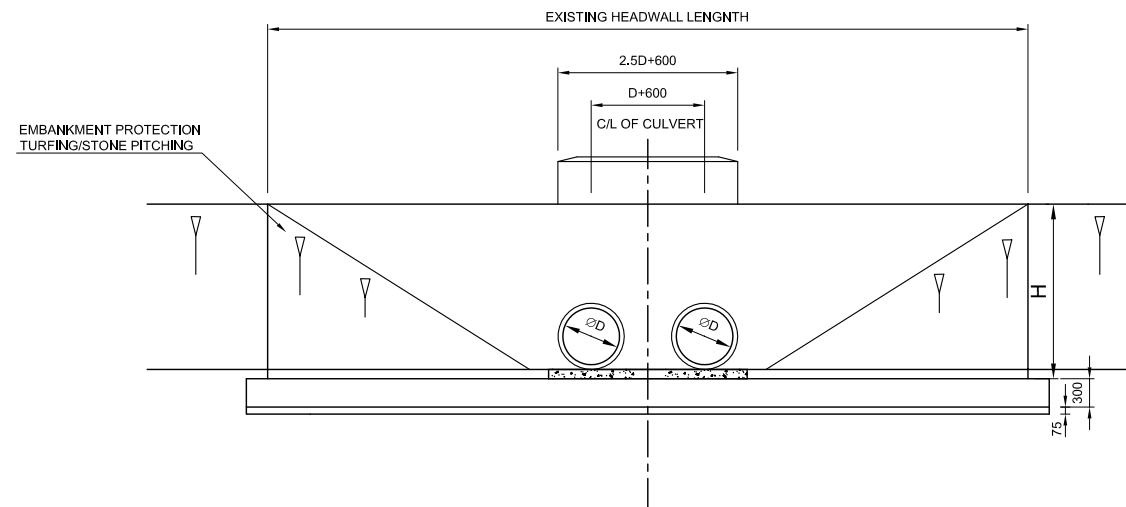
No	REVISION	DATE

THE PRO-POOR EASTERN INFRASTRUCTURE DEVELOPMENT PROJECT

TYPICAL DETAIL OF EXTENSION (1)
(IMPROVEMENT TYPE - E)

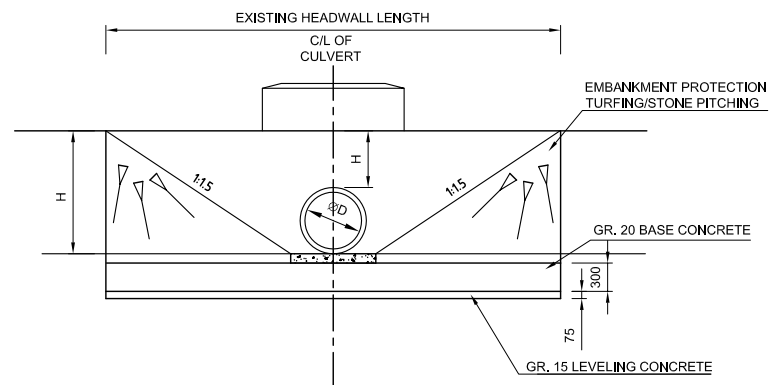
DESIGNED BY:	
CHECKED BY:	
APPROVED BY:	
DWG. NO.	D-07

TYPICAL DETAILS OF EXTENSION (2)
IMPROVEMENT TYPE - E



TYPICAL ELEVATION OF TWIN PIPE CULVERT

SCALE: 1:80



TYPICAL ELEVATION OF SINGLE PIPE CULVERT

SCALE: 1:80

TYPE-E: EXTENSION OF EXISTING PIPE CULVERT

No.	Road	ID No.	Chainage (km)	EXISTING STRUCTURE						IMPROVEMENT STRUCTURE			
				Category	Inner size (Cell x) Length x Height (m)	Structure width (m)	Covering +Deck (m)	Inner size (No. x) Diameter (m)	Road width (m)	Extension of pipe (m)			Headwall (nos.)
										Left	Right	Total	
1	AA004	369/1	368.500	Pipe	dia. 0.60	9.50	0.50	dia. 0.60	14.0	3.2	1.3	4.5	2
2	AA004	373/1	372.165	Pipe	dia. 0.90	8.72	0.43	dia. 0.90	10.0	2.1		2.1	1
3	AA004	373/3	372.940	Pipe	2xdia. 0.90	6.60	0.90	2xdia. 0.90	10.0	3.6		3.6	1
4	AA004	374/1	373.275	Pipe	2xdia. 0.90	6.63	0.75	2xdia. 0.90	10.0	2.2	1.2	3.4	2
5	AA004	374/2	373.670	Pipe	3xdia. 0.60	6.44	0.90	3xdia. 0.60	10.0	2.2	1.3	3.5	2
6	AA004	374/3	373.810	Pipe	dia. 0.60	9.00	1.00	dia. 0.60	10.0	0.3	0.7	1.0	2
7	AA004	375/2	374.405	Pipe	dia. 0.90	9.05	0.70	dia. 0.90	10.0	0.7	0.2	0.9	2
8	AA004	375/3	374.580	Pipe	dia. 0.90	6.45	0.80	dia. 0.90	10.0	1.8	1.8	3.6	2
9	AA004	376/1	375.235	Pipe	2xdia. 1.20	8.65	0.45	2xdia. 1.20	10.0	3.1		3.1	1
10	AA004	376/2	375.495	Pipe	dia. 0.60	8.50	0.50	dia. 0.60	10.0	0.1	1.4	1.5	2
11	AA004	376/4	376.015	Pipe	2xdia. 0.90	9.25	0.28	2xdia. 0.90	10.0	1.3		1.3	1
12	AA004	377/3	376.615	Pipe	2xdia. 0.90	9.10	0.85	2xdia. 0.90	10.0	0.2	0.7	0.9	2
13	AA004	377/4	376.660	Pipe	dia. 0.45	6.00	0.78	dia. 0.45	10.0	2.0	2.0	4.0	2
14	AA004	379/3	378.530	Pipe	dia. 0.90	8.55	0.20	dia. 0.90	10.0		1.4	1.4	1
15	AA004	379/4	378.675	Pipe	dia. 0.60	8.55	0.40	dia. 0.60	10.0		2.7	2.7	1
16	AA004	379/5	378.900	Pipe	dia. 0.60	8.70	0.20	dia. 0.60	10.0		1.8	1.8	1
17	AA004	381/2	380.630	Pipe	dia. 0.60	6.10	0.40	dia. 0.60	13.5	3.9	3.6	7.4	2
18	AA004	381/3	380.815	Pipe	dia. 0.60	7.00	Non	dia. 0.60	13.5	3.8	2.8	6.5	2
19	AA004	382/1	381.070	Pipe	dia. 0.60	5.80	0.60	dia. 0.60	13.5	5.0	2.8	7.7	2
20	AA004	399/1	398.750	Pipe	dia. 0.60	8.90	0.35	dia. 0.60	10.0	0.1	1.0	1.1	2
21	AA004	402/3	401.340	Pipe	dia. 0.60	6.00	0.35	dia. 0.60	10.0	2.1	2.5	4.6	2
22	AA004	403/1	402.140	Pipe	dia. 0.60	10.60	Non	dia. 0.60	10.0		1.3	1.3	1
23	AA004	404/1	403.000	Pipe	dia. 0.60	6.00	0.35	dia. 0.60	10.0	2.7	1.3	4.0	2
24	AA004	406/4	405.365	Pipe	dia. 0.45	6.70	0.50	dia. 0.45	10.0	1.6	1.6	3.2	2
25	AA004	407/1	406.535	Pipe	dia. 0.60	6.65	0.20	dia. 0.60	10.0	0.2	3.1	3.3	2
26	AA004	413/1	412.970	Pipe	2xdia. 0.60	9.00	0.45	2xdia. 0.60	10.0		1.2	1.2	1
27	AA004	414/1	413.480	Pipe	2xdia. 0.60	8.80	0.45	2xdia. 0.60	10.0		1.3	1.3	1
28	AA004	417/2	416.840	Pipe	2xdia. 0.60	8.60	0.60	2xdia. 0.60	10.0		1.4	1.4	1
29	AA004	419/1	418.505	Pipe	dia. 0.60	9.00	0.20	dia. 0.60	10.0		1.7	1.7	1
30	AA004	419/2	418.765	Pipe	dia. 0.45	6.60	0.35	dia. 0.45	10.0	0.8	2.6	3.4	2
31	AA004	425/1	424.875	Pipe	2xdia. 0.45	12.00	0.15	2xdia. 0.45	14.0	1.4	1.4	2.8	2
32	AA015	4/2	3.180	Pipe	dia. 0.60	8.50	0.20	dia. 0.60	10.0		2.8	2.8	1
33	AA015	4/6	3.630	Pipe	2xdia. 0.45	8.60	0.25	2xdia. 0.45	10.0	0.9	0.5	1.4	2
34	AA015	9/2	8.480	Pipe	3xdia. 1.20	9.00	0.50	3xdia. 1.20	10.0	1.7		1.7	1
35	AA015	15/3	14.990	Pipe	dia. 0.60	8.60	0.55	dia. 0.60	10.0	0.9	0.5	1.4	2
36	AA015	18/2	18.160	Pipe	2xdia. 0.60	9.25	0.20	2xdia. 0.60	10.0	0.4	0.4	0.8	2
37	AA015	23/1	22.460	Pipe	dia. 0.60	8.70	0.35	dia. 0.60	10.0	0.9	0.4	1.3	2
38	AA015	25/1	24.420	Pipe	dia. 0.60	8.80	0.45	dia. 0.60	10.0	0.4	0.8	1.2	2
39	AA015	27/1	26.850	Pipe	dia. 0.60	8.90	0.25	dia. 0.60	10.0	1.4		1.4	1
40	AA015	28/2	28.080	Pipe	6xdia. 0.90	8.91	0.40	6xdia. 0.90	10.0	2.2		2.2	1
41	AA015	32/1	31.260	Pipe	dia. 0.60	8.90	0.20	dia. 0.60	10.0	0.5	0.5	1.0	2
42	AA015	37/1	36.390	Pipe	2xdia. 0.60	8.80	0.25	2xdia. 0.60	10.0	0.4	0.8	1.2	2

NOTE

(1) ALL THE DIMENSIONS ARE GIVEN IN MILLIMETERS UNLESS OTHERWISE STATED.

(2) ALL DIMENSIONS ARE PROVISIONAL FINAL FIGURES SHALL BE CONFIRMED BY THE DETAILED DESIGN.

THE DEMOCRATIC SOCIALIST REPUBLIC OF SRI LANKA
MINISTRY OF HIGHWAYS



JICA JAPAN INTERNATIONAL COOPERATION AGENCY

ORIENTAL CONSULTANTS CO., LTD.

NIPPON KOEI CO., LTD.

JEEC JAPAN ENGINEERING CONSULTANTS CO., LTD.

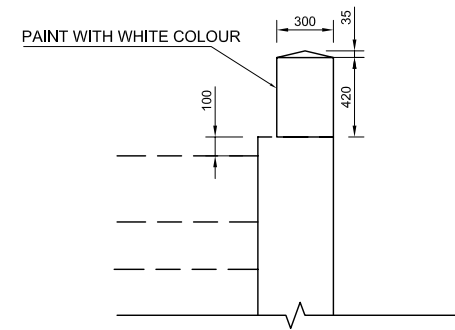
THE PRO-POOR EASTERN INFRASTRUCTURE DEVELOPMENT PROJECT

TYPICAL DETAILS OF EXTENSION (2)
(IMPROVEMENT TYPE - E)

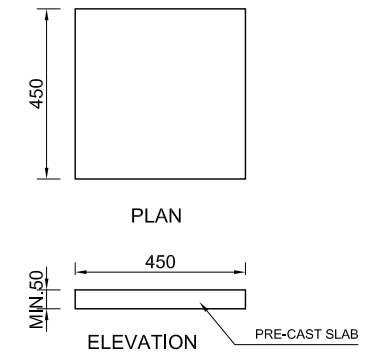
No	REVISION	DATE

DESIGNED BY:	
CHECKED BY:	
APPROVED BY:	
DWG. NO.	D-08

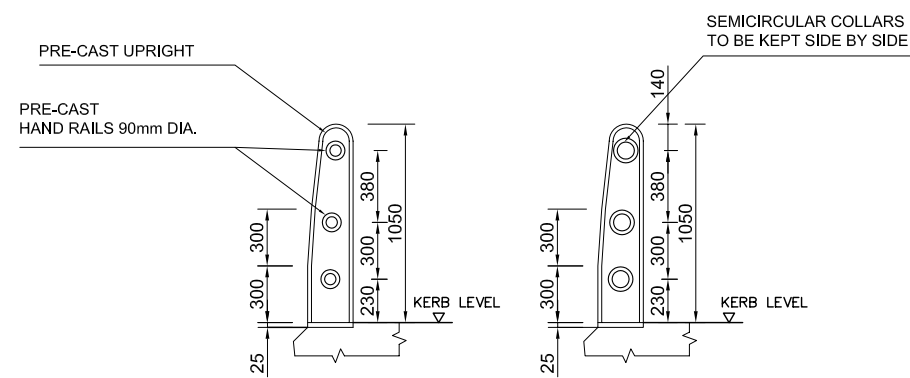
TYPICAL SECTIONS
PARAPET WALL, HAND RAIL AND SIDE WALK SLAB



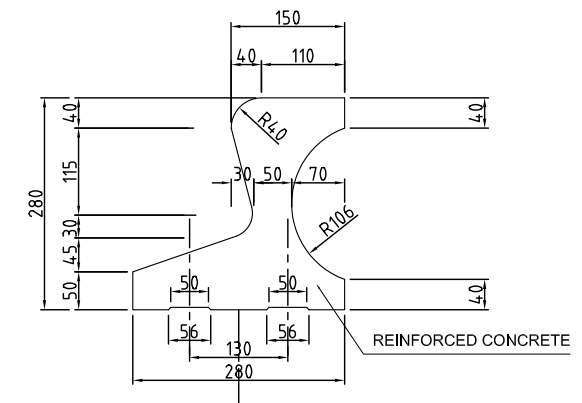
DETAIL OF PARAPET WALL
SCALE: 1:20



DETAIL OF SIDE WALK SLAB
SCALE: 1:10



DETAIL OF PRE-CAST HAND RAIL UP RIGHTS
SCALE: 1:20



DETAIL OF KERB
SCALE: 1:5

NOTE:
(1) ALL THE DIMENSIONS ARE GIVEN IN MILLIMETRES UNLESS OTHERWISE STATED.

THE DEMOCRATIC SOCIALIST REPUBLIC OF SRI LANKA MINISTRY OF HIGHWAYS 	JAPAN INTERNATIONAL COOPERATION AGENCY ORIENTAL CONSULTANTS CO., LTD. NIPPON KOEI CO., LTD. JAPAN ENGINEERING CONSULTANTS CO., LTD.	No. REVISION DATE	THE PRO-POOR EASTERN INFRASTRUCTURE DEVELOPMENT PROJECT	DESIGNED BY:
			TYPICAL SECTIONS PARAPET WALL, HAND RAIL AND SIDE WALK SLAB	CHECKED BY:
			APPROVED BY:	
			DWG. NO.	D-09

DETAIL LIST
IMPROVEMENT TYPE - F
CLEANING WORKS FOR EXISTING CULVERTS

TYPE-F: CLEANING WORKS FOR EXISTING CULVERTS

No.	Road	ID No.	Chainage (Km)	EXISTING STRUCTURE			IMPROVEMENT STRUCTURE			
				Category	Inner size (Cell x) Length x Height (m)	Structure width (m)	Improvement Type	Category	Inner size Length x Height (m)	Cleaning Length (m)
1	AA004	365/2	364.845	Box	1.40x0.55	15.68	F	Box	1.40x0.55	15.7
2	AA004	367/1	366.410	Box	2.05x2.30	15.00	F	Box	2.05x2.30	15.0
3	AA004	368/2	367.840	Pipe	dia. 0.60	11.00	F	Pipe	dia. 0.60	10.0
4	AA004	369/1b	369.115	Box	0.95x0.90	11.00	F	Box	0.95x0.90	11.0
5	AA004	373/2	372.605	Pipe	dia. 0.60	11.00	F	Pipe	dia. 0.60	10.0
6	AA004	375/4	374.792	Box	1.00x1.70	11.45	F	Box	1.00x1.70	11.5
7	AA004	377/5	376.745	Pipe	2xdia. 0.90	13.55	F	Pipe	dia. 0.60	10.0
8	AA004	380/4	379.910	Box	1.20x1.00	15.00	F	Box	1.20x1.00	15.0
9	AA004	382/3	382.800	Box	1.20x0.90	14.00	F	Box	1.20x0.90	14.0
10	AA004	382/4	382.890	Box	2.60x1.50	16.00	F	Box	2.60x1.50	16.0
11	AA004	383/1	383.110	Box	1.10x1.25	10.10	F	Box	1.10x1.25	10.1
12	AA004	383/2	383.760	Box	1.35x1.50	17.00	F	Box	1.35x1.50	17.0
13	AA004	384/1	384.100	Box	1.20x1.10	10.20	F	Box	1.20x1.10	10.2
14	AA004	384/2	384.200	Pipe	6xdia. 1.20	8.25	F	Pipe	dia. 0.60	13.5
15	AA004	384/3	384.490	Box	1.35x1.30	16.10	F	Box	1.35x1.30	16.1
16	AA004	385/1	385.100	Box	2.00x1.20	12.80	F	Box	2.00x1.20	12.8
17	AA004	385/2	385.300	Box	1.20x0.60	13.00	F	Box	1.20x0.60	13.0
18	AA004	385/3	385.585	Box	1.20x0.60	13.00	F	Box	1.20x0.60	13.0
19	AA004	386/2	385.715	Box	1.20x0.60	14.00	F	Box	1.20x0.60	14.0
20	AA004	387/1	386.080	Box	1.20x0.80	13.70	F	Box	1.20x0.80	13.7
21	AA004	387/2	386.310	Box	1.20x0.60	17.50	F	Box	1.20x0.60	17.5
22	AA004	387/3	386.450	Box	1.40x0.70	17.00	F	Box	1.40x0.70	17.0
23	AA004	387/4	386.600	Box	1.50x0.60	18.40	F	Box	1.50x0.60	18.4
24	AA004	387/5	386.700	Box	1.20x0.60	15.30	F	Box	1.20x0.60	15.3
25	AA004	388/1	386.857	Box	1.20x0.50	14.00	F	Box	1.20x0.50	14.0
26	AA004	388/2	386.965	Box	0.90x0.50	17.30	F	Box	0.90x0.50	17.3
27	AA004	388/3	387.065	Box	1.40x0.50	18.00	F	Box	1.40x0.50	18.0
28	AA004	388/4	387.190	Box	1.20x0.50	17.00	F	Box	1.20x0.50	17.0
29	AA004	388/5	387.295	Box	1.20x0.60	18.10	F	Box	1.20x0.60	18.1
30	AA004	388/6	387.450	Box	1.60x1.20	18.00	F	Box	1.60x1.20	18.0
31	AA004	389/1	388.030	Box	1.50x1.40	12.50	F	Box	1.50x1.40	12.5
32	AA004	389/2	388.795	Pipe	dia. 0.90	13.00	F	Pipe	dia. 0.60	10.0
33	AA004	390/1	389.415	Box	1.40x1.20	12.80	F	Box	1.40x1.20	12.8
34	AA004	391/1	391.100	Box	1.20x0.60	13.30	F	Box	1.20x0.60	13.3
35	AA004	391/2	391.480	Box	1.40x0.60	12.90	F	Box	1.40x0.60	12.9
36	AA004	392/1	391.490	Box	1.20x0.70	13.00	F	Box	1.20x0.70	13.0
37	AA004	392/2	391.675	Box	1.20x0.40	13.10	F	Box	1.20x0.40	13.1
38	AA004	393/2	392.460	Box	1.20x0.65	14.50	F	Box	1.20x0.65	14.5
39	AA004	394/1	393.275	Pipe	2xdia. 0.45	9.15	F	Pipe	dia. 0.60	10.0
40	AA004	402/1	401.050	Box	0.90x0.45	13.00	F	Box	0.90x0.45	13.0
41	AA004	402/2	401.115	Box	2.60x0.60	13.30	F	Box	2.60x0.60	13.3
42	AA004	421/1	420.045	Pipe	2xdia. 0.45	14.00	F	Pipe	dia. 0.60	14.4
43	AA004	424/1	423.480	Pipe	2xdia. 0.30	13.90	F	Pipe	dia. 0.60	14.0
44	AA004	424/2	423.720	Pipe	2xdia. 0.30	15.50	F	Pipe	dia. 0.60	14.0
45	AA004	426/1	425.520	Pipe	dia. 0.60	12.30	F	Pipe	dia. 0.60	10.0
46	AA004	427/2	426.822	Box	0.70x0.60	13.50	F	Box	0.70x0.60	13.5
47	AA004	428/1	427.084	Box	2.25x1.20	10.00	F	Box	2.25x1.20	10.0
48	AA015	0/1	0.840	Box	0.60x0.60	22.00	F	Box	0.60x0.60	22.0
49	AA015	2/1	1.302	Box	0.70x0.60	15.00	F	Box	0.70x0.60	15.0
50	AA015	2/2	1.900	Pipe	2xdia. 0.30	13.90	F	Pipe	dia. 0.60	10.0
51	AA015	5/1	4.640	Box	1.45x1.40	13.20	F	Box	1.45x1.40	13.2
52	AA015	7/3	6.560	Box	1.20x1.00	10.10	F	Box	1.20x1.00	10.1
53	AA015	11/1	10.550	Pipe	2xdia. 0.90	11.20	F	Pipe	dia. 0.60	10.0
54	AA015	12/4	12.035	Box	1.20x0.50	6.90	F	Box	1.20x0.50	6.9
55	AA015	12/5	12.140	Pipe	dia. 0.60	9.90	F	Pipe	dia. 0.60	10.0
56	AA015	13/2	13.135	Box	2.90x0.90	13.40	F	Box	2.90x0.90	13.4
57	AA015	14/1	13.425	Box	3.50x0.80	13.40	F	Box	3.50x0.80	13.4
58	AA015	14/2	13.870	Box	2.00x0.50	14.00	F	Box	2.00x0.50	14.0
59	AA015	15/1	14.450	Box	0.90x0.50	12.80	F	Box	0.90x0.50	12.8
60	AA015	15/2	14.630	Box	3.10x1.60	13.90	F	Box	3.10x1.60	13.9
61	AA015	16/1	15.740	Box	3.00x0.60	12.60	F	Box	3.00x0.60	12.6
62	AA015	17/3	17.100	Box	3.00x0.50	11.50	F	Box	3.00x0.50	11.5

NOTE

(1) ALL DIMENSIONS SHALL BE CONFIRMED ON THE SITE.

THE DEMOCRATIC SOCIALIST REPUBLIC OF SRI LANKA
 MINISTRY OF HIGHWAYS



JICA JAPAN INTERNATIONAL COOPERATION AGENCY
ORIENTAL CONSULTANTS CO., LTD.
NIPPON KOEI CO., LTD.
JEEC JAPAN ENGINEERING CONSULTANTS CO., LTD.

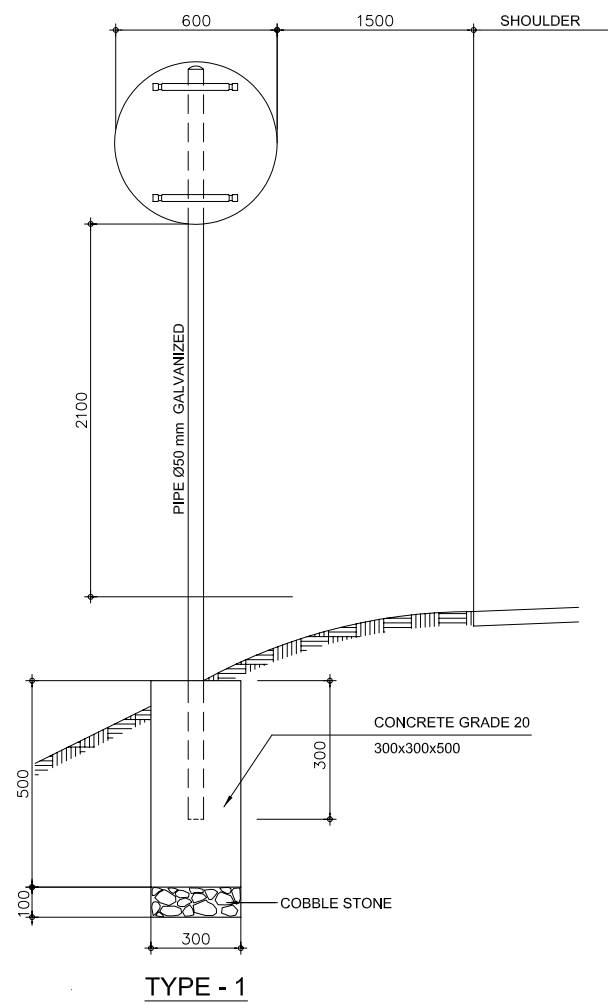
No	REVISION	DATE

THE PRO-POOR EASTERN INFRASTRUCTURE DEVELOPMENT PROJECT

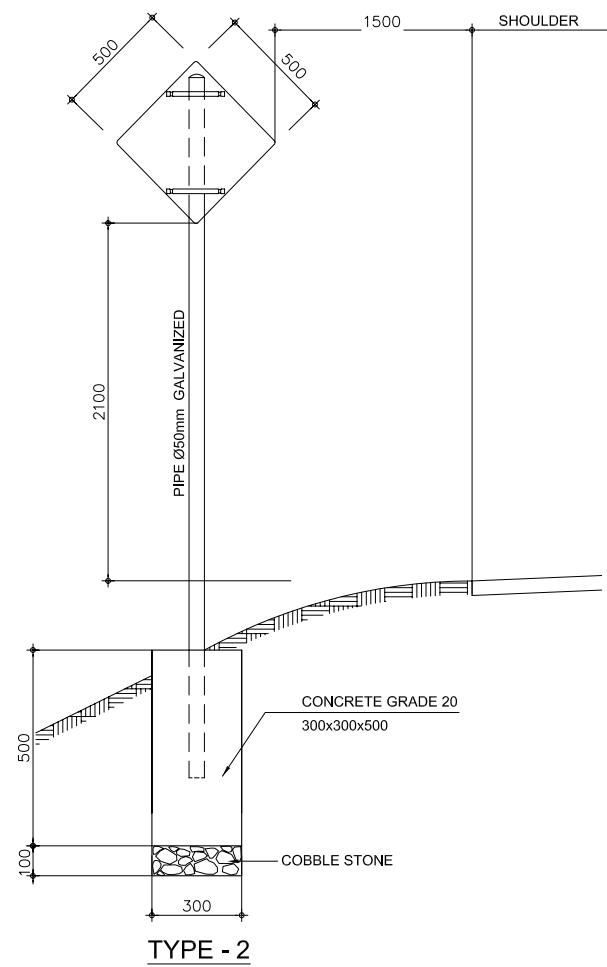
DESIGNED BY:
 CHECKED BY:
 APPROVED BY:
 DWG. NO. D-10

DETAILS LIST
 (IMPROVEMENT TYPE - F)

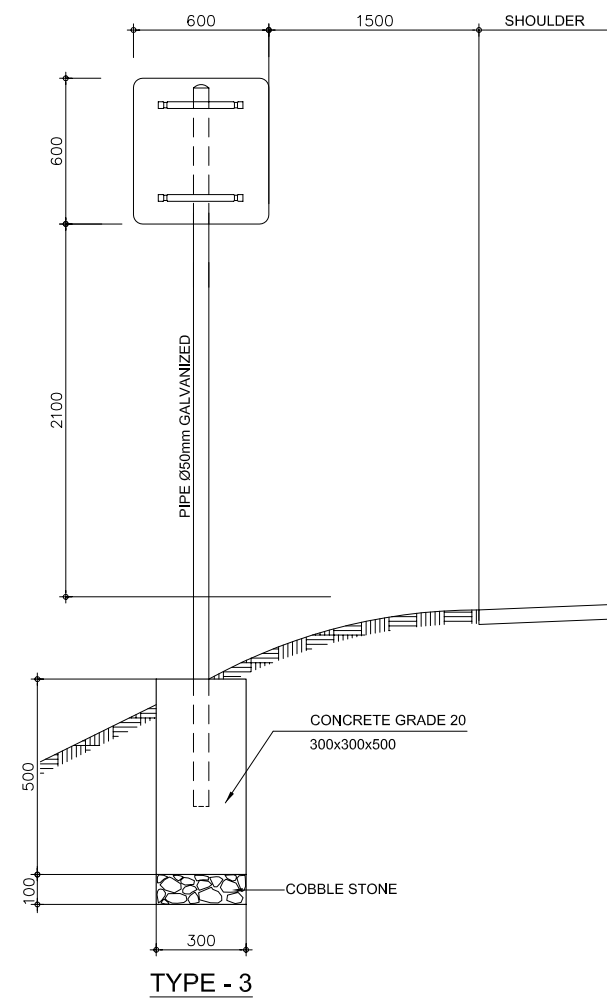
E. TRAFFIC SIGNS AND MARKING



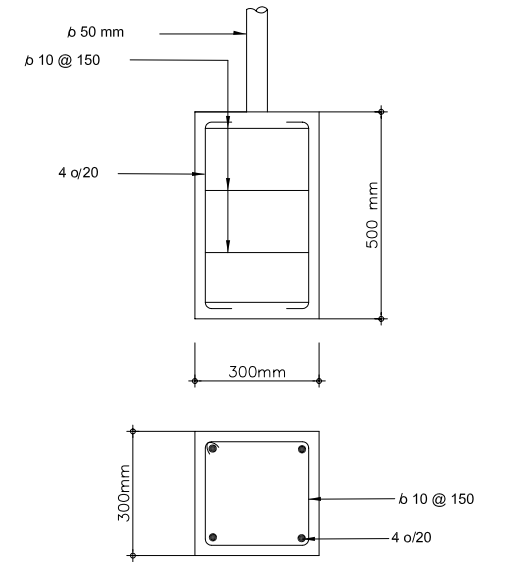
TYPE - 1



TYPE - 2



TYPE - 3



FOUNDATION FOR NORMAL TRAFFIC SIGN POST

NOTE:
 H= 1500 mm FOR RURAL AREAS
 H= 2100 mm FOR URBAN AREAS

ELEVATIONS OF TYPICAL SIGNS

THE DEMOCRATIC SOCIALIST REPUBLIC OF SRI LANKA
 MINISTRY OF HIGHWAYS



JAPAN INTERNATIONAL COOPERATION AGENCY
 ORIENTAL CONSULTANTS CO.,LTD.
 NIPPON KOEI CO., LTD.
 JAPAN ENGINEERING CONSULTANTS CO., LTD.

No	REVISION	DATE

THE PRO-POOR EASTERN INFRASTRUCTURE DEVELOPMENT PROJECT

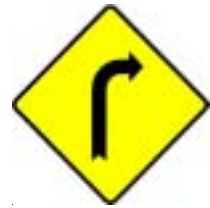
REFLECTIVE TRAFFIC SIGNS (1)
 FIXING ARRANGEMENT OF TRAFFIC SIGNS

DESIGNED BY:	
CHECKED BY:	
APPROVED BY:	
DWG. NO.	E-01

WARNING SIGNS



2. 2. 1
LEFT BEND AHEAD



2. 2. 2
RIGHT BEND AHEAD



2. 2. 3
DOUBLE BEND
LEFT AHEAD



2. 2. 4
DOUBLE BEND
RIGHT AHEAD



2. 2. 15
T-JUNCTION AHEAD



2. 2. 9
ROAD NARROWS ON
BOTH SIDES AHEAD



2. 2. 17
TRAFFIC FROM LEFT
MERGES AHEAD



2. 4. 5.5.
BUS STOP



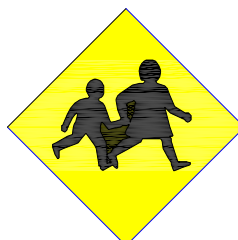
2. 2. 25
DANGEROUS DESCENT
AHEAD



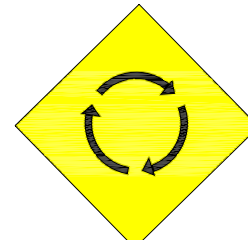
2. 2. 26
DANGEROUS ASCENT
AHEAD



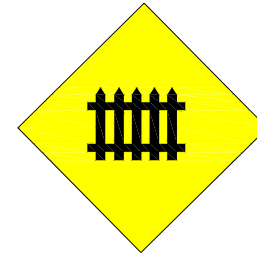
2. 2. 2. 5
PEDESTRIAN CROSSING
AHEAD



2. 2. 2. 6
CHILDREN CROSSING
AHEAD



2. 2. 19
ROUNDBABOUT AHEAD



2. 2. 28
LEVEL CROSSING WITH
GATES AHEAD



2. 4. 5.1.
PEDESTRIAN CROSSING



2. 4. 5.3.
HOSPITAL

RESTRICTIVE SIGNS



2. 3. 2. 5
END OF SPEED LIMIT



2. 3. 2. 5
SPEED LIMIT



2. 3. 2. 5A
SPEED LIMIT



2. 3. 2. 5B
SPEED LIMIT



2. 3. 3. 4
LEFT TURN



2. 3. 3. 6
PASS THIS SIDE

MANDATORY SIGNS

PROHIBITORY SIGNS



2. 3. 1. 3
NO RIGHT TURN



2. 3. 1. 2
NO LEFT TURN

CHEVRON MARKER

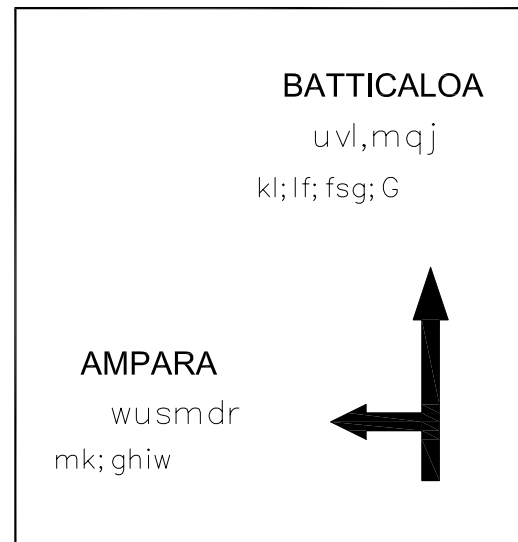


SIDE OBSTACLE MARKER



No	REVISION	DATE

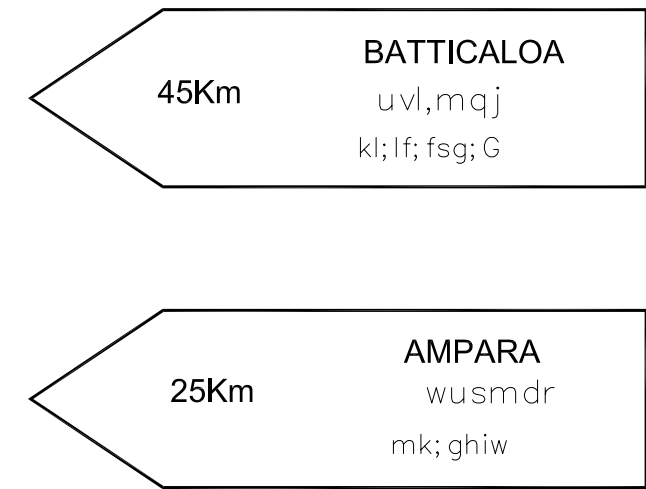
DESIGNED BY:	
CHECKED BY:	
APPROVED BY:	
DWG. NO.	E-02



TYPE 1

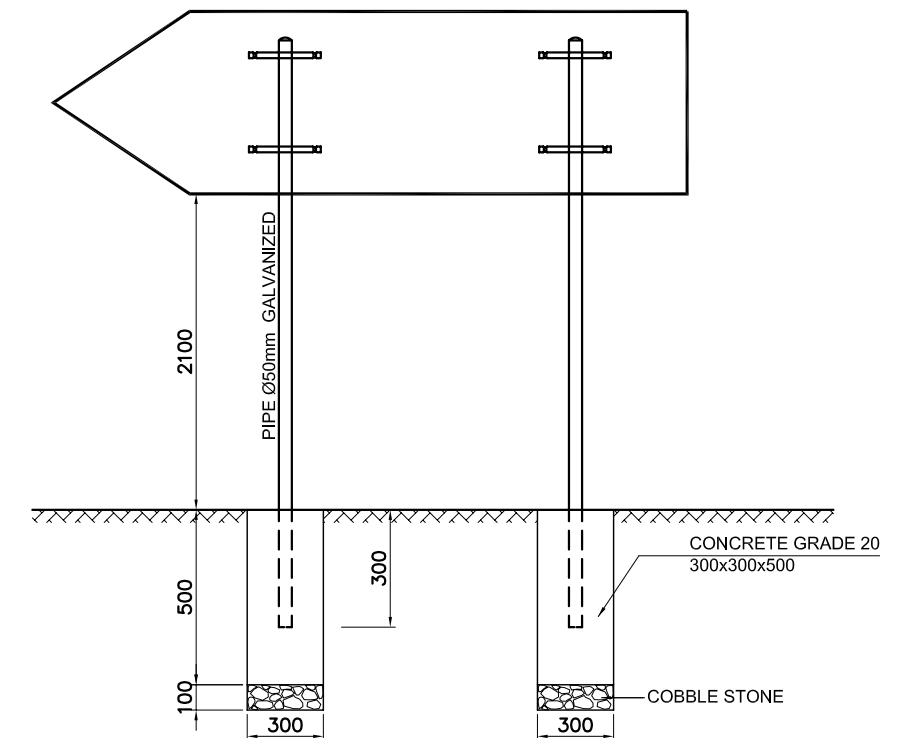


TYPE 2



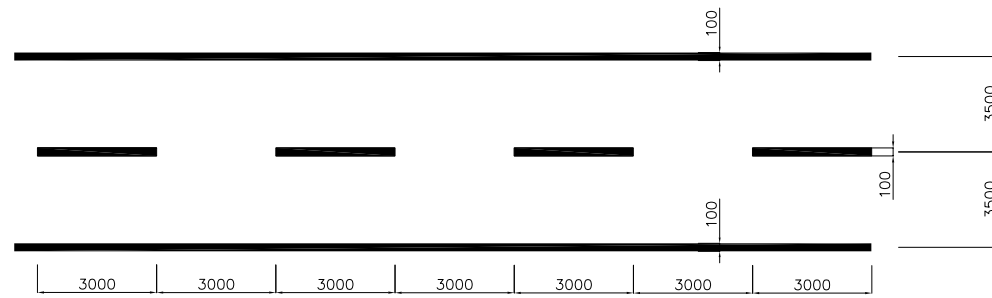
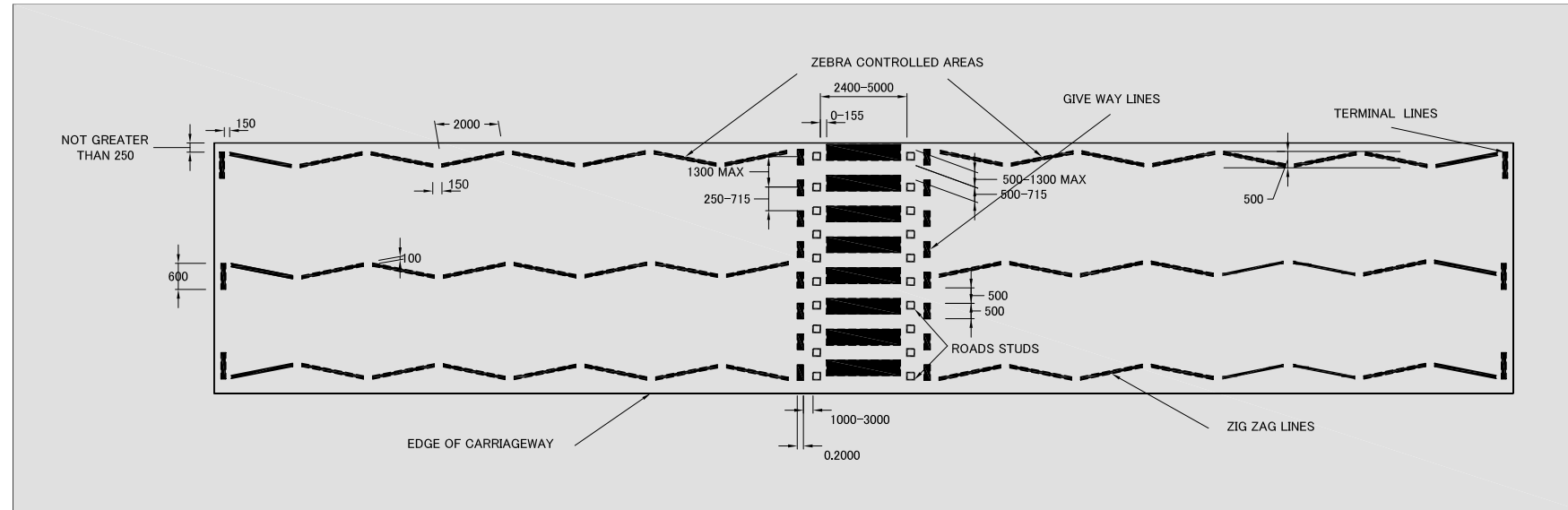
TYPE 3

No.of Sign	Shape of Sign	Key Dimensions of sign (mm)		Colour of Components of sign			Size of letters		Size of numerals	
		Dimensions	Width of border	Symbols, letters numerals	Back ground	Border	Minimum size	Minimum size	Minimum size	Minimum size
Fig. 71 to Fig.73	Rectangle	Variable	30	Black	White	Black	75mm	150mm	75mm	150mm

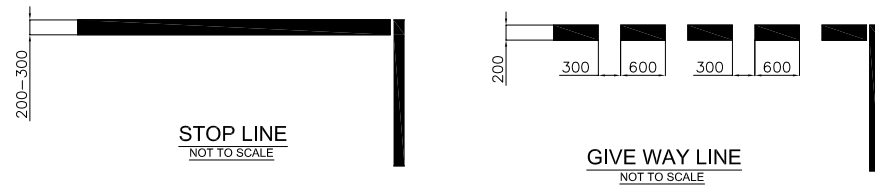


TYPICAL DETAIL FOR DIRECTION BOARD INSTALLATION
TYPE 1,2, & 3

PEDESTRIAN CROSSING
NOT TO SCALE

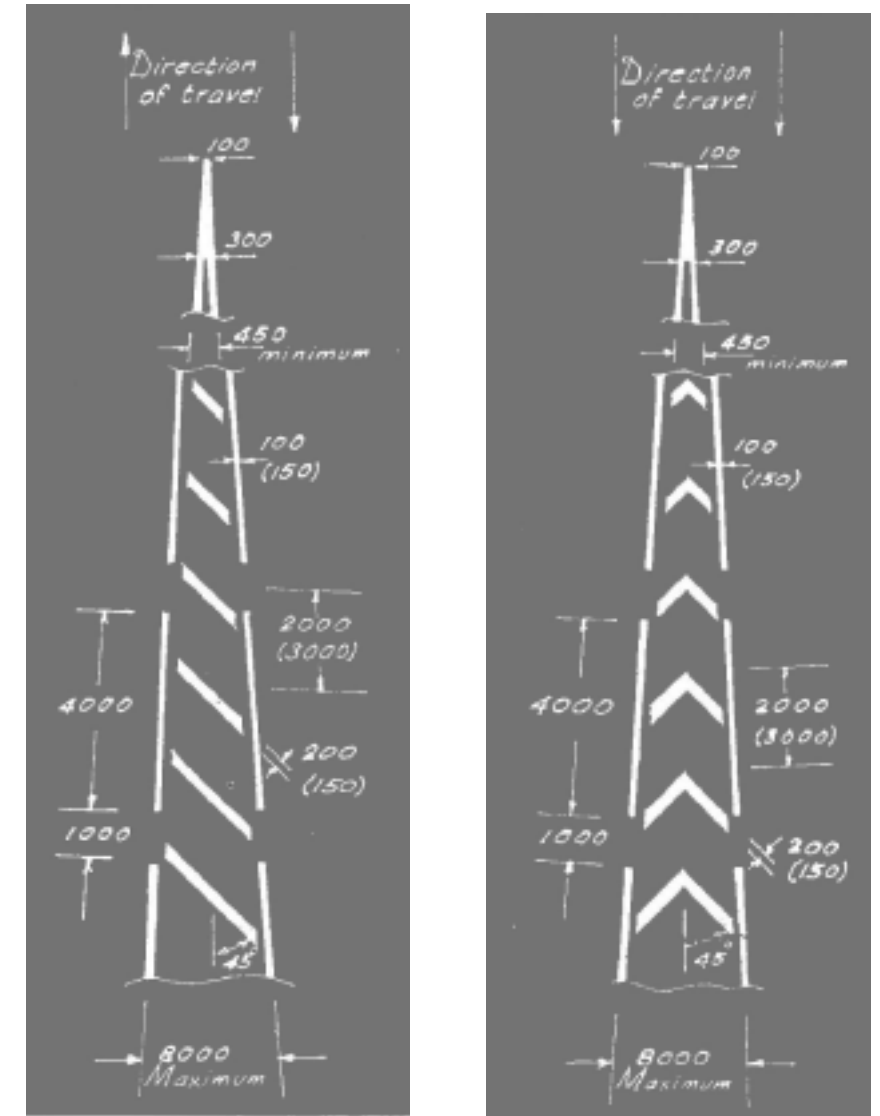


CENTRE LINE AND EDGE LINE MARKING
NOT TO SCALE



STOP LINE
NOT TO SCALE

GIVE WAY LINE
NOT TO SCALE



CHEVRON MARKING DETAIL
NOT TO SCALE

THE DEMOCRATIC SOCIALIST REPUBLIC OF SRI LANKA
MINISTRY OF HIGHWAYS



JICA JAPAN INTERNATIONAL COOPERATION AGENCY
ORIENTAL CONSULTANTS CO.,LTD.
NIPPON KOEI CO., LTD.
JEEC JAPAN ENGINEERING CONSULTANTS CO., LTD.

No	REVISION	DATE

THE PRO-POOR EASTERN INFRASTRUCTURE DEVELOPMENT PROJECT

ROAD MARKING - (1)
STANDARD PAVEMENT & CHEVRON MARKING

DESIGNED BY:	
CHECKED BY:	
APPROVED BY:	
DWG. NO.	E-04