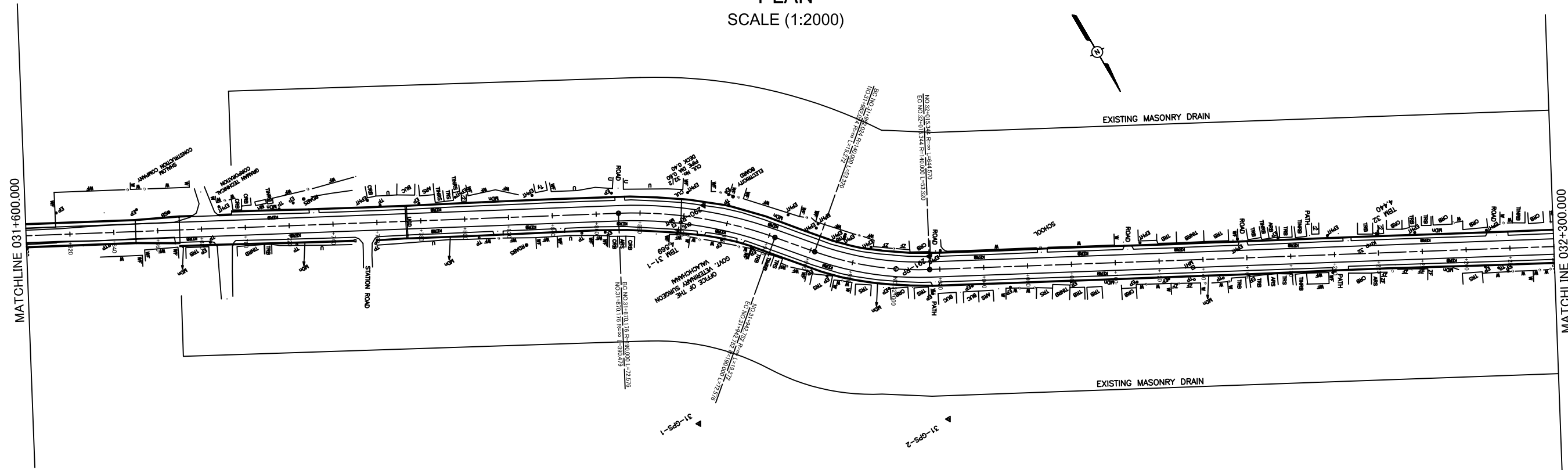
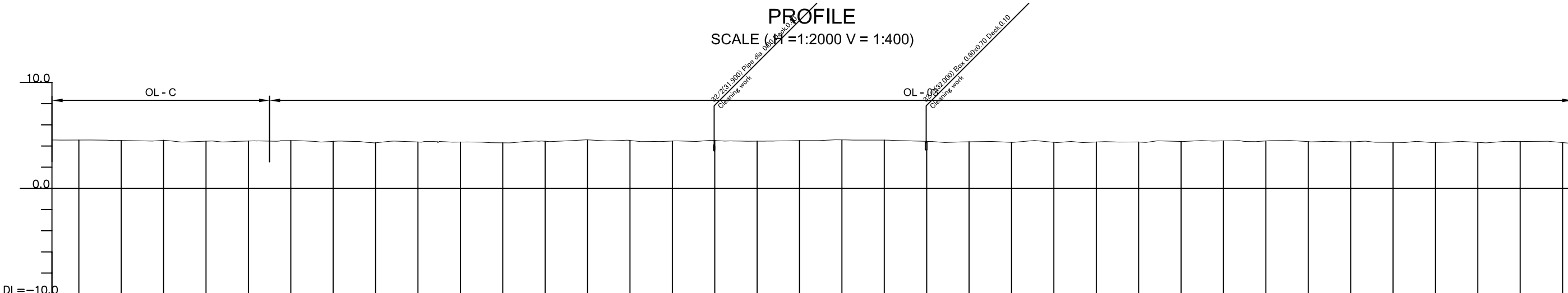


PLAN
SCALE (1:2000)



PROFILE
SCALE (H=1:2000 V=1:400)

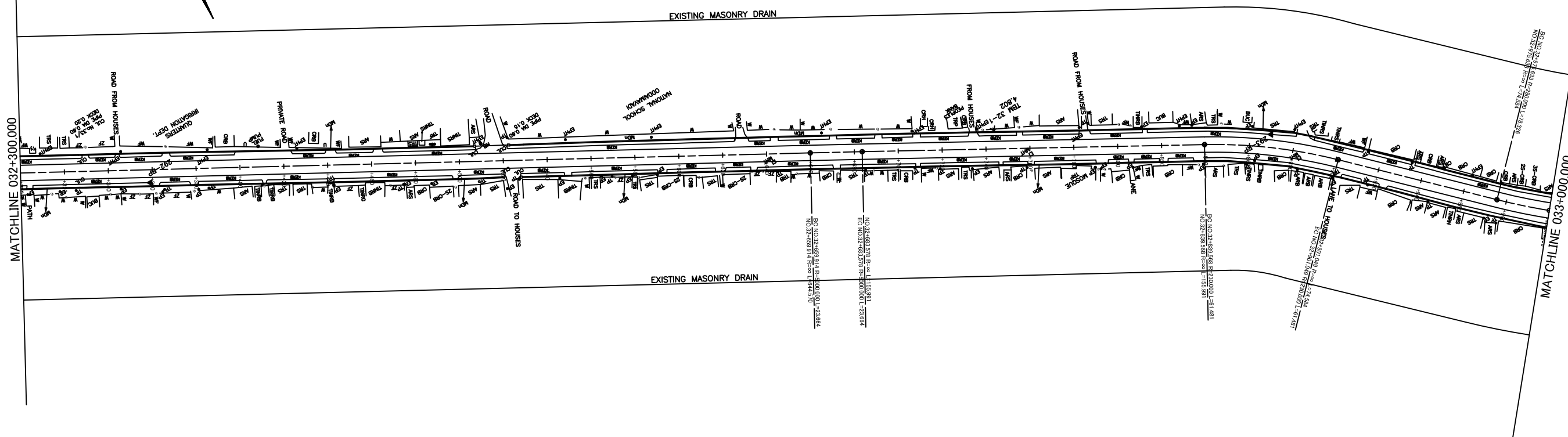


GRADE	VARY																																																			
PROPOSED ROAD LEVELS	VARY																																																			
EXISTING GROUND LEVELS	4.559	4.524	4.484	4.538	4.451	4.468	4.460	4.508	4.433	4.430	4.303	4.374	4.428	4.372	4.298	4.445	4.487	4.577	4.481	4.522	4.424	4.468	4.520	4.478	4.452	4.509	4.512	4.575	4.556	4.500	4.434	4.378	4.397	4.342	4.505	4.347	4.378	4.373	4.483	4.428	4.482	4.477	4.411	4.396	4.388	4.340	4.423	4.333	4.338	4.423	4.442	4.322
STATION (km)	+600.000	+620.000	+630.000	+640.000	+660.000	+680.000	+690.000	+700.000	+720.000	+730.000	+740.000	+760.000	+770.000	+780.000	+800.000	+820.000	+830.000	+840.000	+850.000	+860.000	+870.000	+880.000	+900.000	+906.912	+920.000	+940.000	+942.752	+962.000	+980.000	+988.014	+10.000	+15.344	+20.000	+40.000	+50.000	+60.000	+80.000	+100.000	+110.000	+120.000	+140.000	+160.000	+180.000	+200.000	+210.000	+220.000	+230.000	+240.000	+260.000	+280.000	+290.000	+300.000
CURVE BAND	R=?? L=390.479										R=190.000 L=72.576										R=?? L=19.274		R=140.000 L=53.320																													

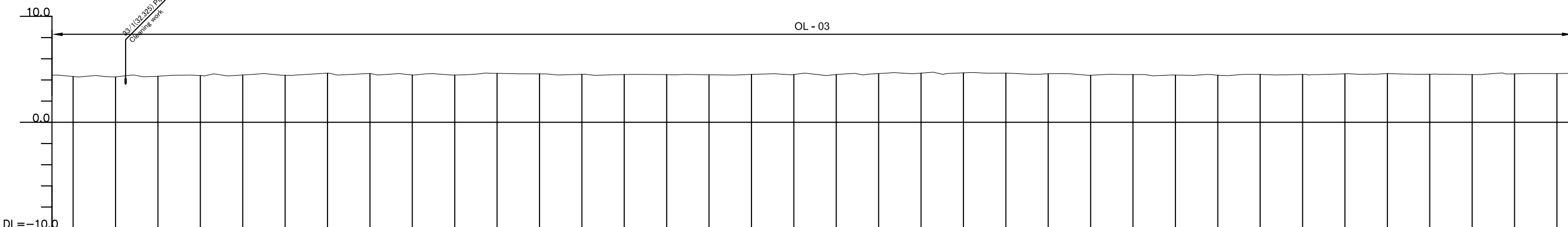
THE DEMOCRATIC SOCIALIST REPUBLIC OF SRI LANKA MINISTRY OF HIGHWAYS 	JAPAN INTERNATIONAL COOPERATION AGENCY ORIENTAL CONSULTANTS CO., LTD. NIPPON KOEI CO., LTD. JAPAN ENGINEERING CONSULTANTS CO., LTD.	THE PRO-POOR EASTERN INFRASTRUCTURE DEVELOPMENT PROJECT		DESIGNED BY:
		PLANE & PROFILE 031+600~032+300		CHECKED BY:
				APPROVED BY:
				DWG. NO. B-136

No	REVISION	DATE

PLAN
SCALE (1:2000)



PROFILE
SCALE (H =1:2000 V = 1:400)



GRADE																																																
PROPOSED ROAD LEVELS	VARY																																															
EXISTING GROUND LEVELS	4.322	4.277	4.340	4.440	4.411	4.460	4.436	4.629	4.508	4.600	4.465	4.453	4.541	4.615	4.566	4.528	4.505	4.492	4.481	4.518	4.573	4.505	4.503	4.502	4.596	4.642	4.651	4.640	4.665	4.641	4.637	4.578	4.579	4.437	4.505	4.456	4.447	4.440	4.519	4.475	4.512	4.578	4.595	4.531	4.502	4.575	4.566	4.594
STATION (km)	+300.008	+320.008	+340.008	+350.008	+360.008	+380.008	+400.008	+420.008	+430.008	+440.008	+460.008	+480.008	+490.008	+500.008	+520.008	+540.008	+560.008	+580.008	+600.008	+620.008	+630.008	+640.008	+660.008	+671.746	+680.008	+683.578	+690.008	+700.008	+720.008	+730.008	+740.008	+760.008	+770.008	+780.008	+800.008	+820.008	+830.008	+840.008	+860.008	+870.493	+880.008	+889.998	+920.008	+940.008	+960.008	+975.633	+980.008	NO.33
CURVE BAND	R=?? L=644.570																						R=5000.000 L=23.664		R=?? L=155.991		R=230.000 L=61.481		R=?? L=74.584																			

THE DEMOCRATIC SOCIALIST REPUBLIC OF SRI LANKA
MINISTRY OF HIGHWAYS



JICA JAPAN INTERNATIONAL COOPERATION AGENCY

OC ORIENTAL CONSULTANTS CO., LTD.

NK NIPPON KOEI CO., LTD.

JEC JAPAN ENGINEERING CONSULTANTS CO., LTD.

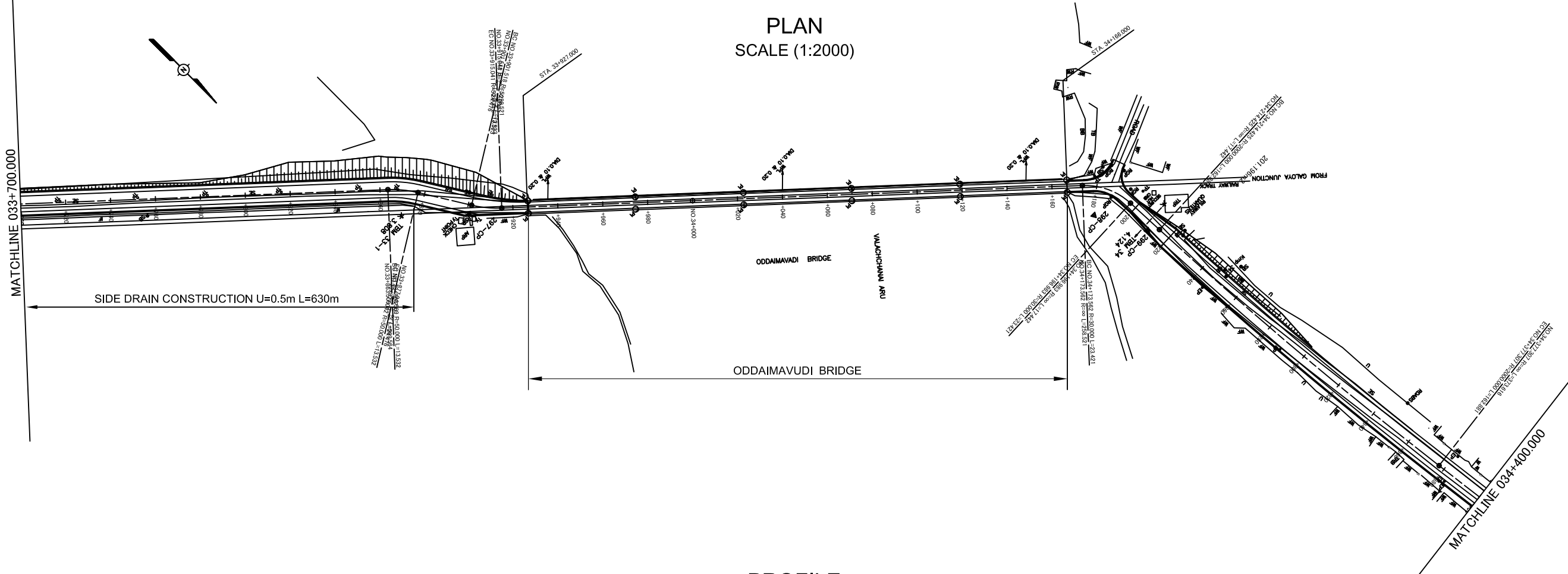
No	REVISION	DATE

THE PRO-POOR EASTERN INFRASTRUCTURE DEVELOPMENT PROJECT

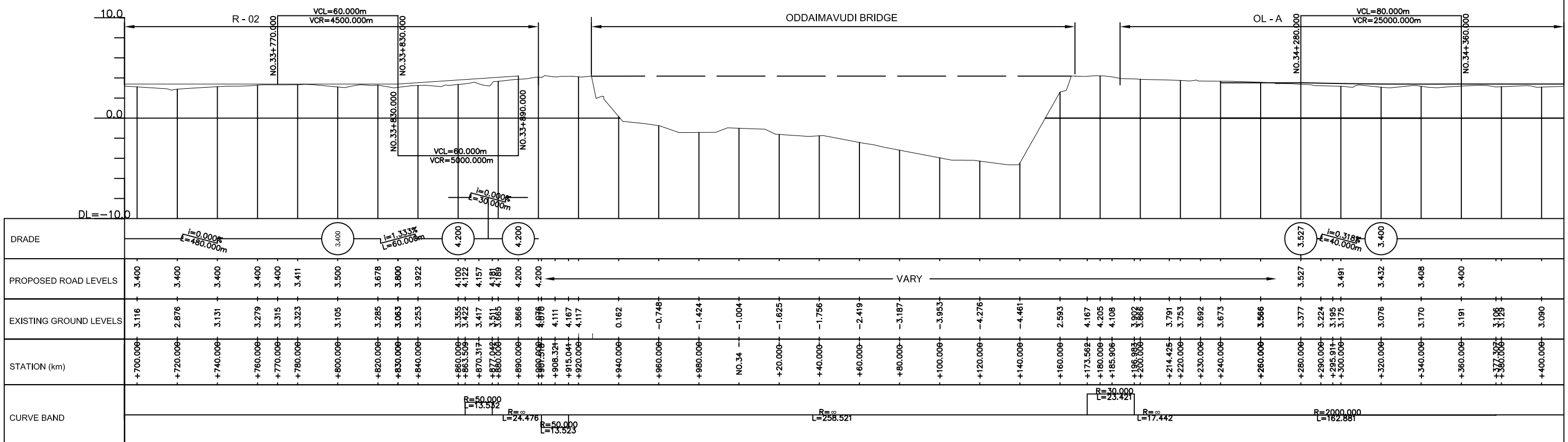
PLANE & PROFILE
032+300-033+300

DESIGNED BY:	
CHECKED BY:	
APPROVED BY:	
DWG. NO.	B-137

PLAN
SCALE (1:2000)



PROFILE
SCALE (H =1:2000 V = 1:400)



THE DEMOCRATIC SOCIALIST REPUBLIC OF SRI LANKA
MINISTRY OF HIGHWAYS



JICA JAPAN INTERNATIONAL COOPERATION AGENCY
ORIENTAL CONSULTANTS CO., LTD.
NIPPON KOEI CO., LTD.
JEC JAPAN ENGINEERING CONSULTANTS CO., LTD.

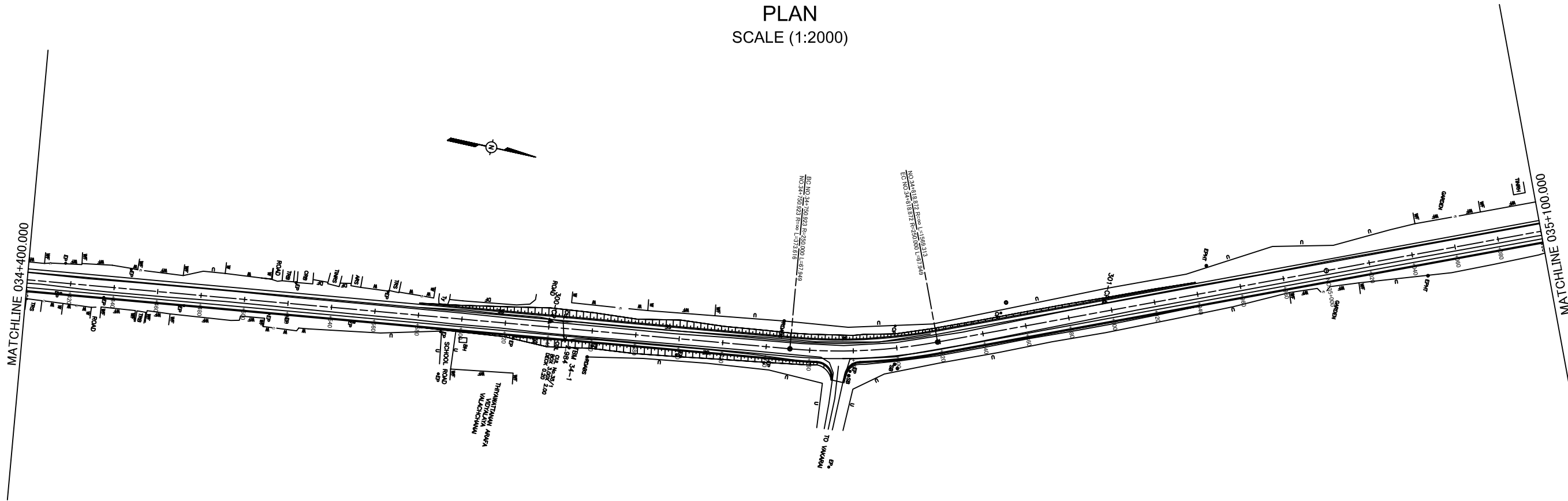
No	REVISION	DATE

THE PRO-POOR EASTERN INFRASTRUCTURE DEVELOPMENT PROJECT

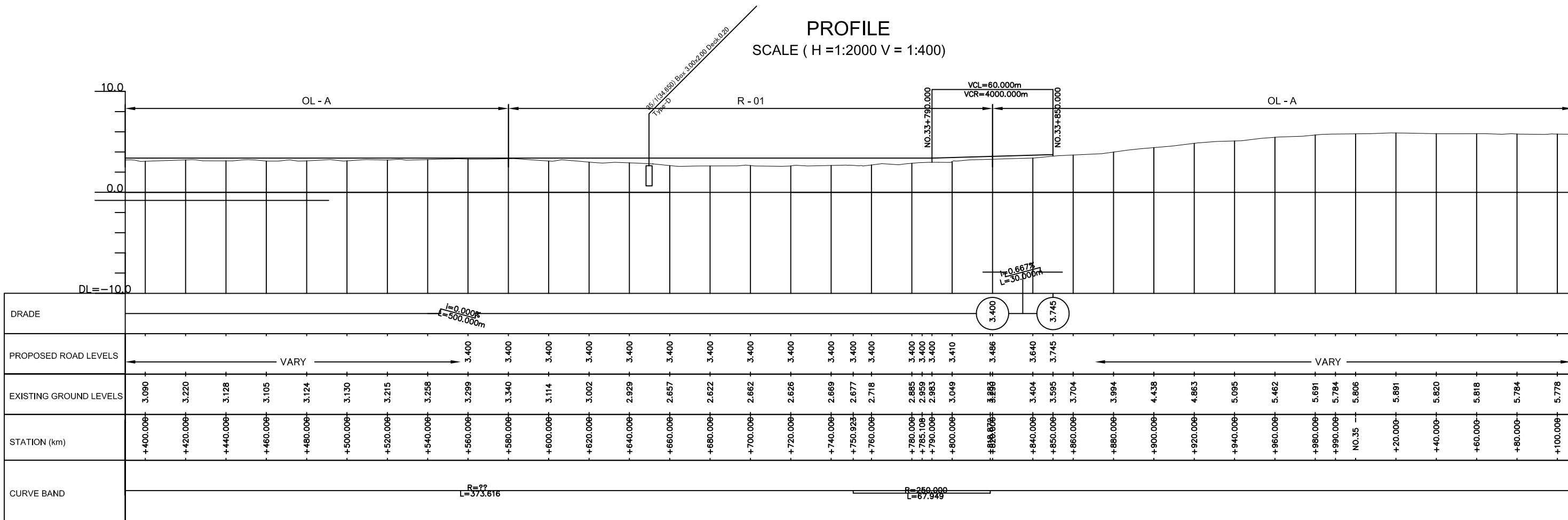
PLANE & PROFILE
033+700-034+400

DESIGNED BY:	
CHECKED BY:	
APPROVED BY:	
DWG. NO.	B-139

PLAN
SCALE (1:2000)



PROFILE
SCALE (H =1:2000 V = 1:400)



THE DEMOCRATIC SOCIALIST REPUBLIC OF SRI LANKA
MINISTRY OF HIGHWAYS

Road Development Authority

JICA JAPAN INTERNATIONAL COOPERATION AGENCY

ORIENTAL CONSULTANTS CO., LTD.

NIPPON KOEI CO., LTD.

JEC JAPAN ENGINEERING CONSULTANTS CO., LTD.

No	REVISION	DATE

THE PRO-POOR EASTERN INFRASTRUCTURE DEVELOPMENT PROJECT

PLANE & PROFILE

034+400~035+100

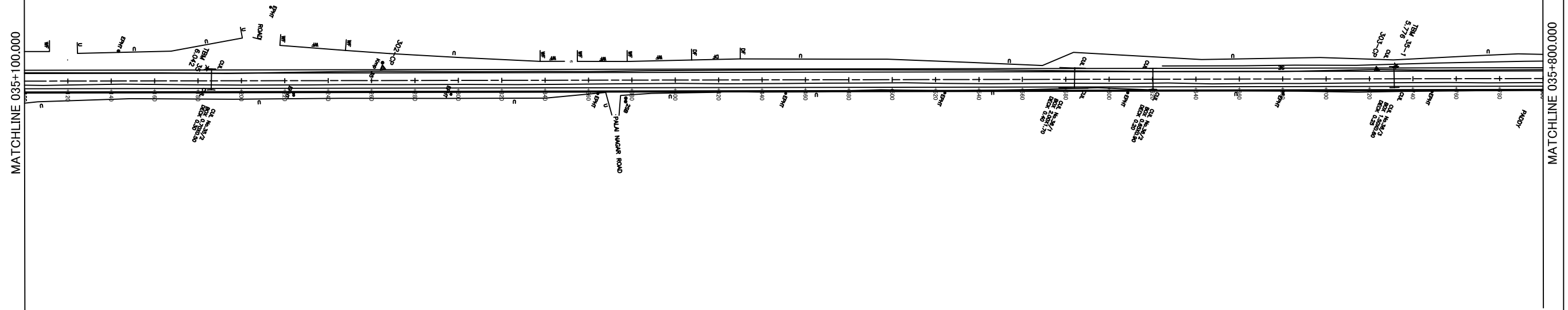
DESIGNED BY:

CHECKED BY:

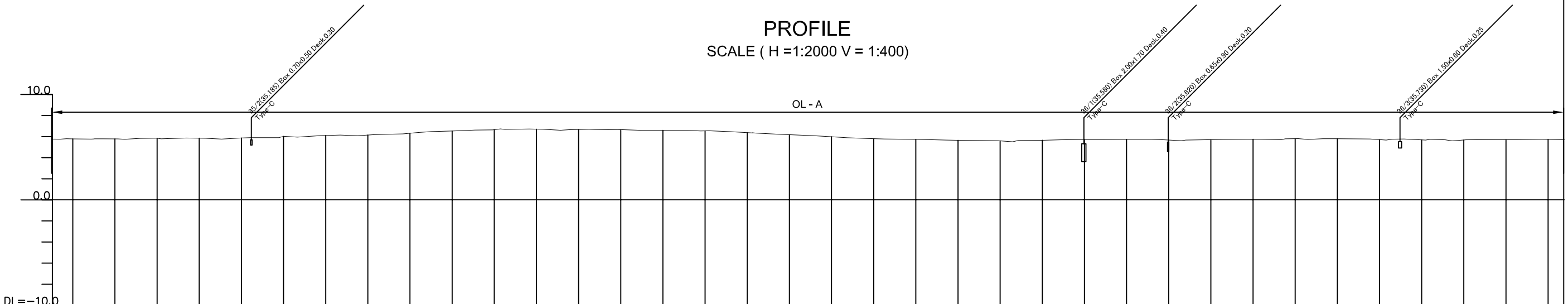
APPROVED BY:

DWG. NO. B-140

PLAN
SCALE (1:2000)



PROFILE
SCALE (H =1:2000 V = 1:400)



DRADE																																										
PROPOSED ROAD LEVELS	VARY																																									
EXISTING GROUND LEVELS	5.778	5.775	5.846	5.843	5.761	5.862	6.011	6.103	6.137	6.315	6.527	6.652	6.699	6.668	6.652	6.585	6.537	6.480	6.370	6.171	5.977	5.867	5.794	5.729	5.643	5.622	5.588	5.649	5.715	5.733	5.666	5.673	5.704	5.740	5.798	5.763	5.792	5.707	5.684	5.673	5.705	5.729
STATION (km)	+100.008	+120.008	+140.008	+160.008	+170.008	+180.008	+200.008	+220.008	+240.008	+260.008	+280.008	+300.008	+320.008	+340.008	+360.008	+380.008	+400.008	+410.008	+420.008	+440.008	+460.008	+470.008	+480.008	+500.008	+520.008	+530.008	+540.008	+560.008	+580.008	+600.008	+620.008	+630.008	+640.008	+660.008	+680.008	+690.008	+700.008	+720.008	+740.008	+760.008	+780.008	+800.008
CURVE BAND	R=?? L=1569.313																																									

THE DEMOCRATIC SOCIALIST REPUBLIC OF SRI LANKA
MINISTRY OF HIGHWAYS

Road Development Authority

jica JAPAN INTERNATIONAL COOPERATION AGENCY

ORIENTAL CONSULTANTS CO., LTD.

NIPPON KOEI CO., LTD.

JEC JAPAN ENGINEERING CONSULTANTS CO., LTD.

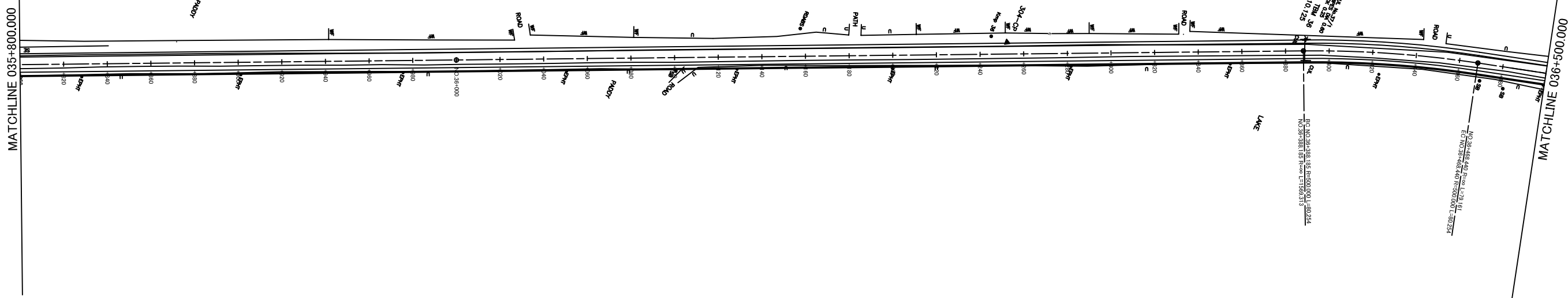
No	REVISION	DATE

THE PRO-POOR EASTERN INFRASTRUCTURE DEVELOPMENT PROJECT

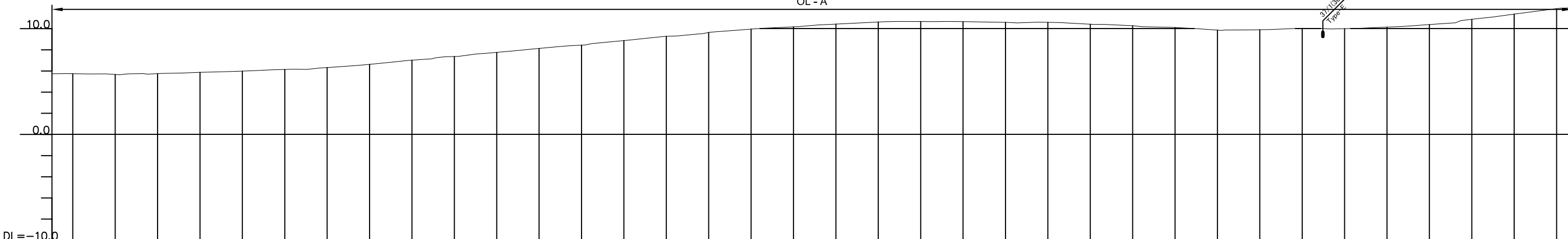
PLANE & PROFILE
035+100~035+800

DESIGNED BY:	
CHECKED BY:	
APPROVED BY:	
DWG. NO.	B-141

PLAN
SCALE (1:2000)



PROFILE
SCALE (H =1:2000 V = 1:400)
OL - A



GRADE																																																	
PROPOSED ROAD LEVELS	VARY																																																
EXISTING GROUND LEVELS	5.729	5.702	5.654	5.733	5.856	5.971	6.056	6.129	6.311	6.609	7.009	7.164	7.353	7.746	8.115	8.430	8.861	9.263	9.389	9.623	9.943	10.153	10.305	10.417	10.613	10.655	10.659	10.648	10.615	10.579	10.583	10.515	10.402	10.262	10.142	10.088	9.844	9.883	9.945	10.018	10.005	9.986	10.133	10.295	10.373	10.870	11.055	11.356	11.874
STATION (km)	+800.000	+810.000	+820.000	+840.000	+860.000	+880.000	+890.000	+900.000	+920.000	+940.000	+960.000	+970.000	+980.000	NO.36	+20.000	+40.000	+60.000	+80.000	+90.000	+100.000	+120.000	+140.000	+150.000	+160.000	+180.000	+200.000	+210.000	+220.000	+230.000	+240.000	+260.000	+270.000	+280.000	+300.000	+310.000	+320.000	+340.000	+360.000	+370.000	+380.000	+388.185	+400.000	+420.000	+436.000	+440.000	+460.000	+468.440	+480.000	+500.000
CURVE BAND																					R=500.000 L=80.294																												

THE DEMOCRATIC SOCIALIST REPUBLIC OF SRI LANKA
MINISTRY OF HIGHWAYS



jica JAPAN INTERNATIONAL COOPERATION AGENCY

OC ORIENTAL CONSULTANTS CO., LTD.

NK NIPPON KOEI CO., LTD.

JEC JAPAN ENGINEERING CONSULTANTS CO., LTD.

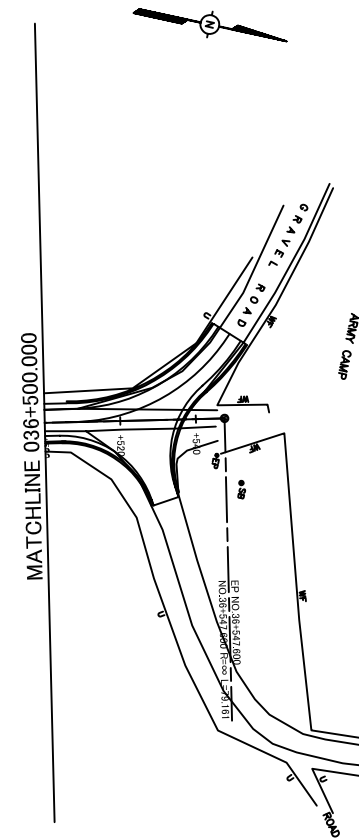
No	REVISION	DATE

THE PRO-POOR EASTERN INFRASTRUCTURE DEVELOPMENT PROJECT

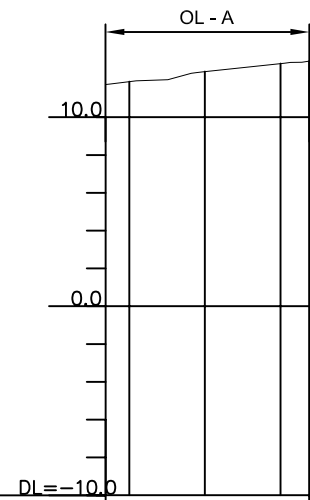
PLANE & PROFILE
035+800~036+500

DESIGNED BY:	
CHECKED BY:	
APPROVED BY:	
DWG. NO.	B-142

PLAN
SCALE (1:2000)



PROFILE
SCALE (H =1:2000 V = 1:400)



DRADE	← VARY →			
PROPOSED ROAD LEVELS				
EXISTING GROUND LEVELS	11.874	12.408	12.828	12.959
STATION (km)	+500.008	+520.008	+540.008	+547.608
CURVE BAND	R=?? L=79.161			

THE DEMOCRATIC SOCIALIST REPUBLIC OF SRI LANKA
MINISTRY OF HIGHWAYS



JAPAN INTERNATIONAL COOPERATION AGENCY
 ORIENTAL CONSULTANTS CO., LTD.
 NIPPON KOEI CO., LTD.
 JAPAN ENGINEERING CONSULTANTS CO., LTD.

No	REVISION	DATE

THE PRO-POOR EASTERN INFRASTRUCTURE DEVELOPMENT PROJECT
 PLANE & PROFILE
 036+500~036+547

DESIGNED BY:	
CHECKED BY:	
APPROVED BY:	
DWG. NO.	B-143