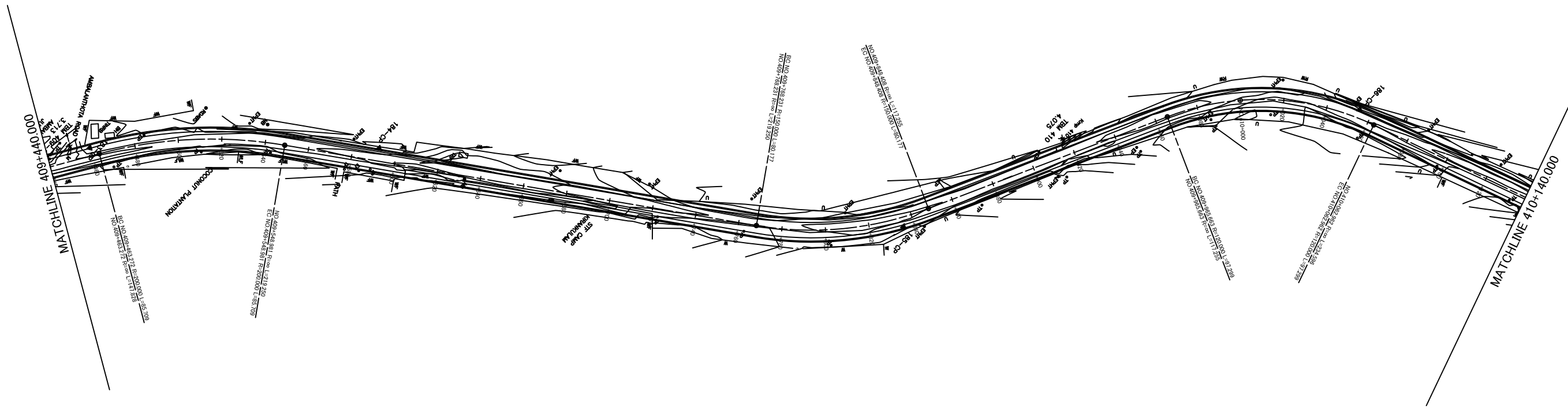
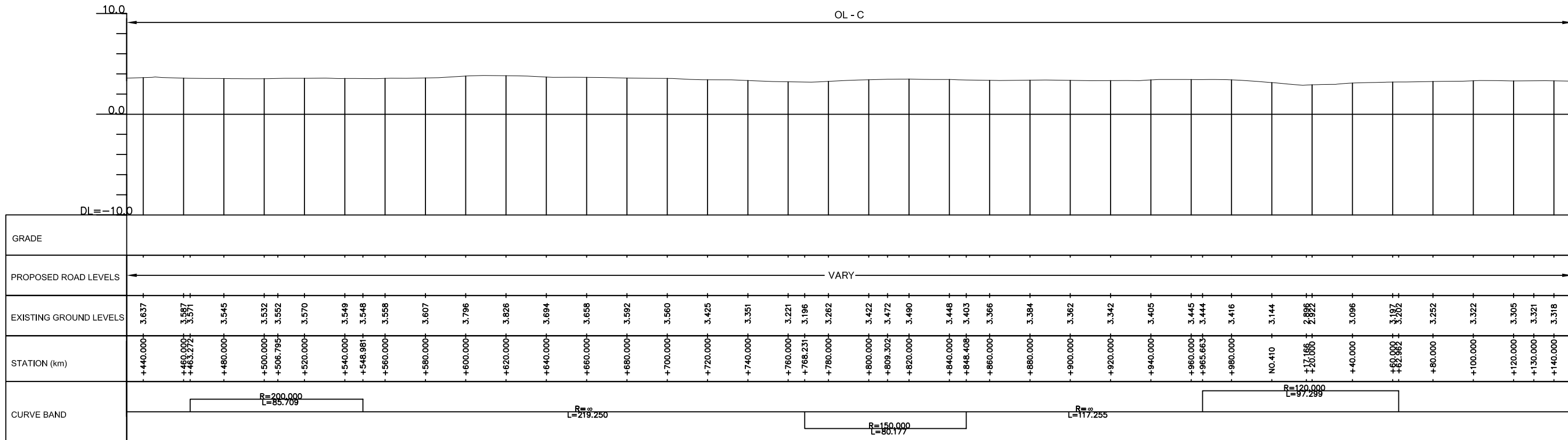


PLAN  
SCALE (1:2000)



PROFILE  
SCALE ( H =1:2000 V = 1:400)



THE DEMOCRATIC SOCIALIST REPUBLIC OF SRI LANKA  
MINISTRY OF HIGHWAYS



JAPAN INTERNATIONAL COOPERATION AGENCY  
 ORIENTAL CONSULTANTS CO., LTD.  
 NIPPON KOEI CO., LTD.  
 JAPAN ENGINEERING CONSULTANTS CO., LTD.

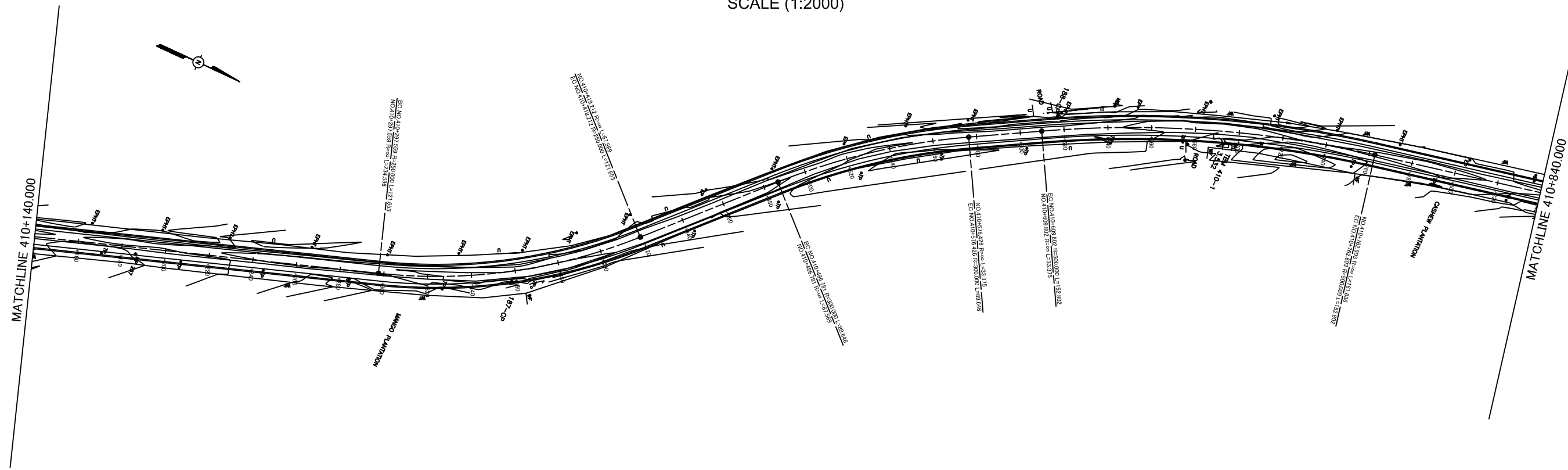
No.	REVISION	DATE

THE PRO-POOR EASTERN INFRASTRUCTURE DEVELOPMENT PROJECT

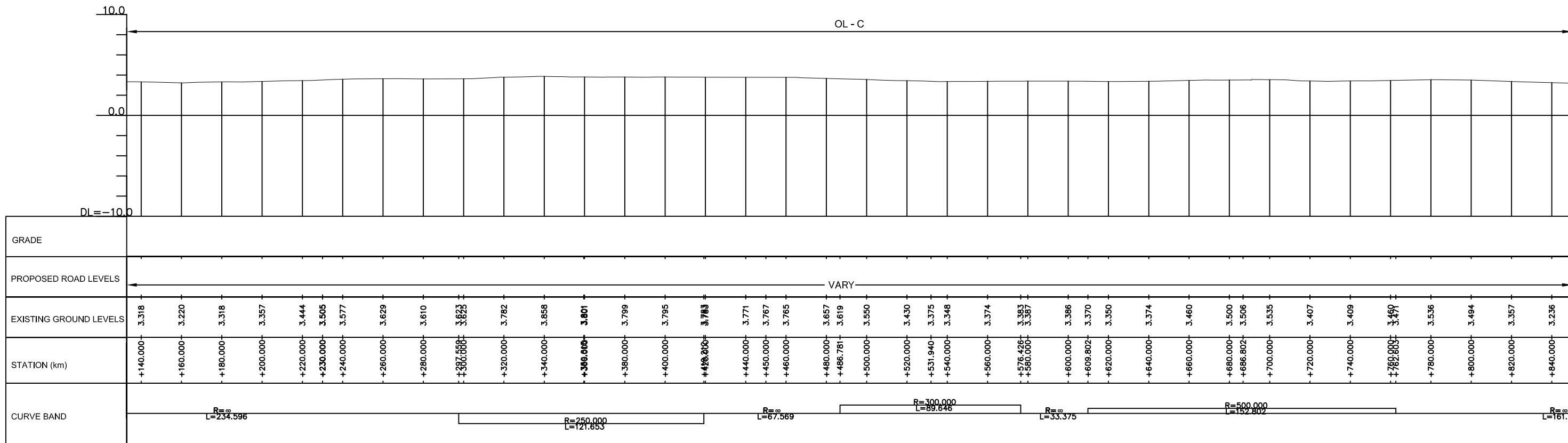
PLANE & PROFILE  
409+440~410+140

DESIGNED BY:	
CHECKED BY:	
APPROVED BY:	
DWG. NO.	B-066

PLAN  
SCALE (1:2000)

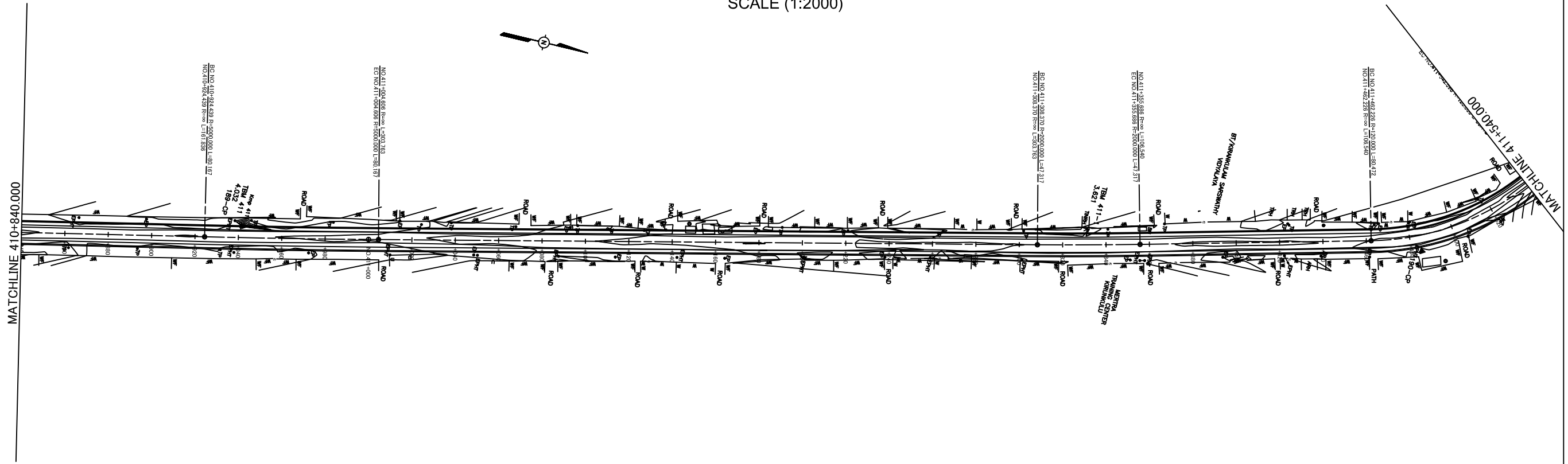


PROFILE  
SCALE ( H =1:2000 V = 1:400)

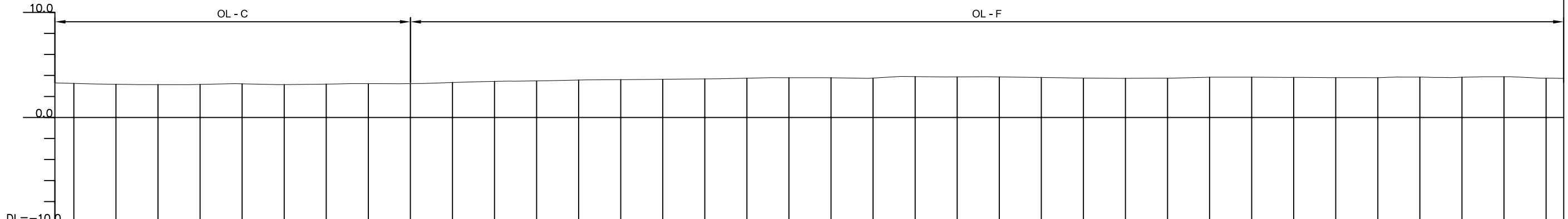


THE DEMOCRATIC SOCIALIST REPUBLIC OF SRI LANKA MINISTRY OF HIGHWAYS  	JAPAN INTERNATIONAL COOPERATION AGENCY ORIENTAL CONSULTANTS CO., LTD. NIPPON KOEI CO., LTD. JAPAN ENGINEERING CONSULTANTS CO., LTD.	THE PRO-POOR EASTERN INFRASTRUCTURE DEVELOPMENT PROJECT		DESIGNED BY:
		PLANE & PROFILE 410+140~410+840		CHECKED BY:
				APPROVED BY:
				DWG. NO. B-067
		No	REVISION	DATE

PLAN  
SCALE (1:2000)



PROFILE  
SCALE ( H =1:2000 V = 1:400)



GRADE																																														
PROPOSED ROAD LEVELS	VARY																																													
EXISTING GROUND LEVELS	3.236	3.157	3.134	3.127	3.145	3.197	3.180	3.127	3.174	3.186	3.217	3.220	3.231	3.330	3.432	3.482	3.558	3.595	3.632	3.670	3.735	3.784	3.783	3.778	3.748	3.887	3.861	3.857	3.829	3.803	3.778	3.749	3.732	3.724	3.736	3.739	3.826	3.833	3.812	3.788	3.686	3.638	3.824	3.845	3.875	3.739
STATION (km)	+840.000	+860.000	+870.000	+880.000	+900.000	+920.000	+924.439	+940.000	+960.000	+964.523	+980.000	NO.411	+4.606	+20.000	+40.000	+60.000	+80.000	+100.000	+120.000	+140.000	+160.000	+180.000	+190.000	+200.000	+220.000	+240.000	+260.000	+280.000	+290.000	+300.000	+308.370	+320.000	+332.029	+340.000	+355.686	+360.000	+380.000	+400.000	+420.000	+440.000	+462.999	+480.000	+500.000	+504.041	+520.000	+542.888
CURVE BAND	R=∞ L=161.836		R=5000.000 L=80.167								R=∞						R=∞ L=303.763				R=2000.000 L=47.317				R=∞ L=106.540				R=120.000 L=80.472																	

THE DEMOCRATIC SOCIALIST REPUBLIC OF SRI LANKA  
MINISTRY OF HIGHWAYS



**JICA** JAPAN INTERNATIONAL COOPERATION AGENCY

**ORIENTAL CONSULTANTS CO., LTD.**

**NIPPON KOEI CO., LTD.**

**JEC** JAPAN ENGINEERING CONSULTANTS CO., LTD.

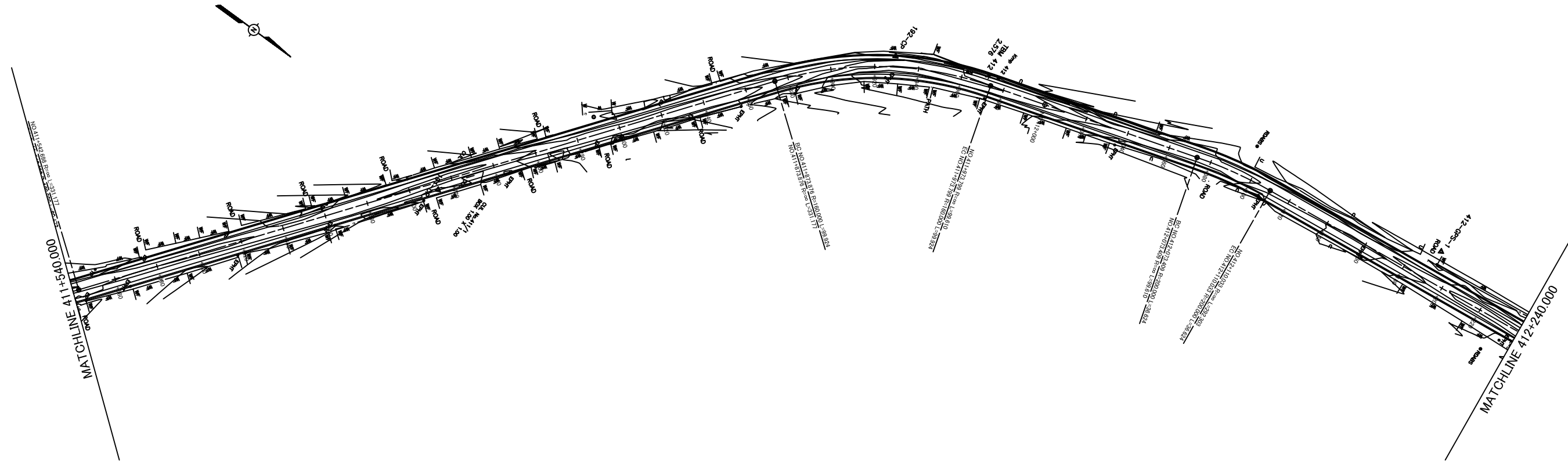
No	REVISION	DATE

THE PRO-POOR EASTERN INFRASTRUCTURE DEVELOPMENT PROJECT

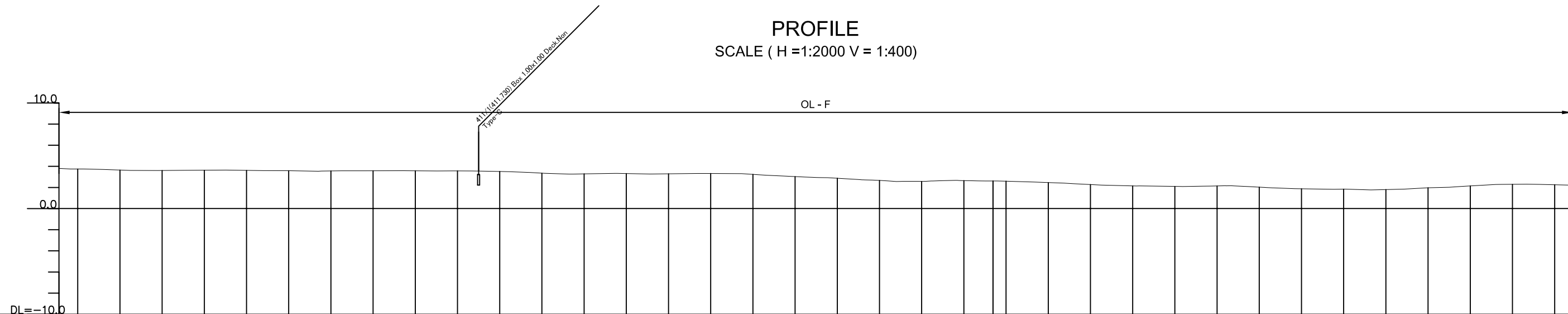
PLANE & PROFILE  
410+840~411+540

DESIGNED BY:	
CHECKED BY:	
APPROVED BY:	
DWG. NO.	B-068

PLAN  
SCALE (1:2000)



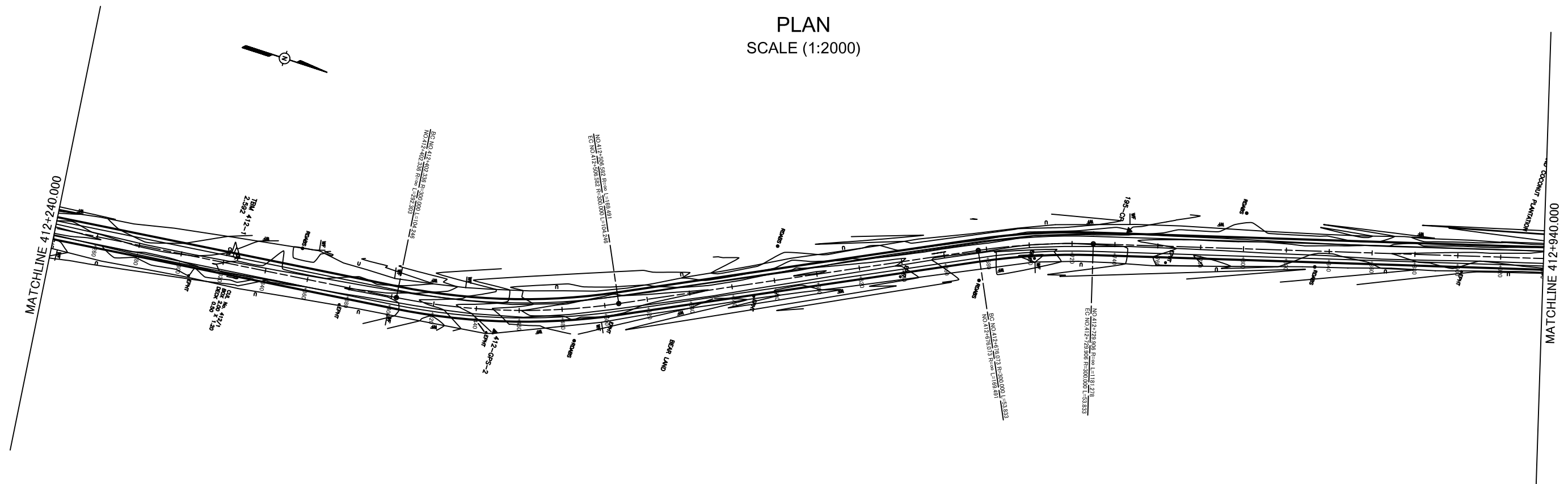
PROFILE  
SCALE ( H =1:2000 V = 1:400)



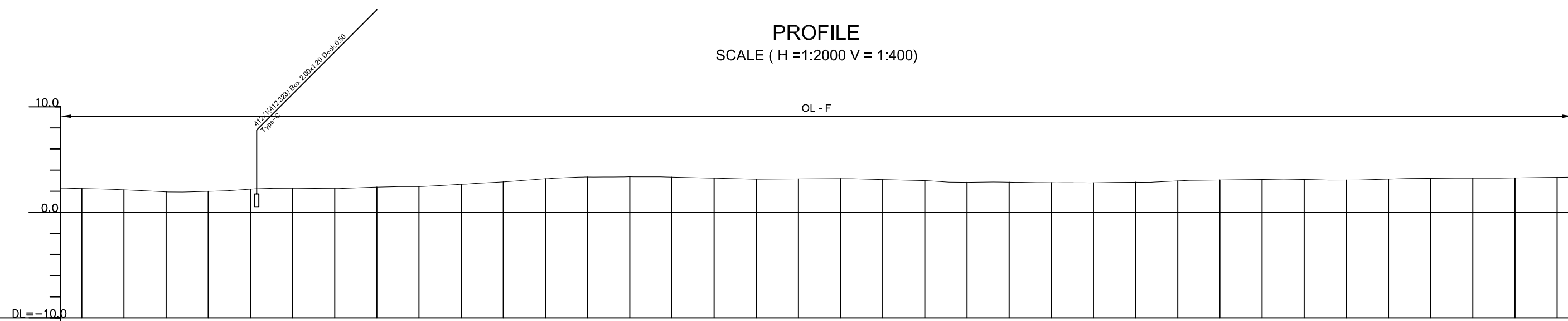
GRADE	OL - F																																																	
PROPOSED ROAD LEVELS	VARY																																																	
EXISTING GROUND LEVELS	3.738	3.641	3.599	3.628	3.609	3.578	3.559	3.573	3.570	3.565	3.510	3.346	3.285	3.314	3.273	3.288	3.316	3.309	3.235	3.080	3.025	2.938	2.869	2.660	2.595	2.565	2.644	2.608	2.589	2.458	2.320	2.271	2.147	2.095	2.090	2.114	2.138	2.168	2.025	1.932	1.893	1.870	1.834	1.777	1.794	1.966	2.018	2.140	2.290	2.251
STATION (km)	+540.000	+560.000	+580.000	+600.000	+620.000	+640.000	+660.000	+680.000	+700.000	+720.000	+740.000	+760.000	+780.000	+800.000	+810.000	+820.000	+840.000	+850.000	+860.000	+873.876	+880.000	+890.000	+900.000	+920.000	+925.527	+940.000	+960.000	+973.789	+980.000	NO.412	+15.000	+20.000	+40.000	+60.000	+65.000	+73.409	+80.000	+90.992	+100.000	+110.033	+115.000	+120.000	+140.000	+150.000	+160.000	+186.868	+190.000	+200.000	+220.000	+240.000
CURVE BAND											R=∞ L=331.177										R=160.000 L=99.924						R=∞ L=99.610						R=200.000 L=36.824																	

THE DEMOCRATIC SOCIALIST REPUBLIC OF SRI LANKA MINISTRY OF HIGHWAYS  	JAPAN INTERNATIONAL COOPERATION AGENCY ORIENTAL CONSULTANTS CO., LTD. NIPPON KOEI CO., LTD. JAPAN ENGINEERING CONSULTANTS CO., LTD.	No.                      REVISION                      DATE	THE PRO-POOR EASTERN INFRASTRUCTURE DEVELOPMENT PROJECT		DESIGNED BY:
			PLANE & PROFILE 411+540~412+240		CHECKED BY:
					APPROVED BY:
					DWG. NO.                      B-069

PLAN  
SCALE (1:2000)



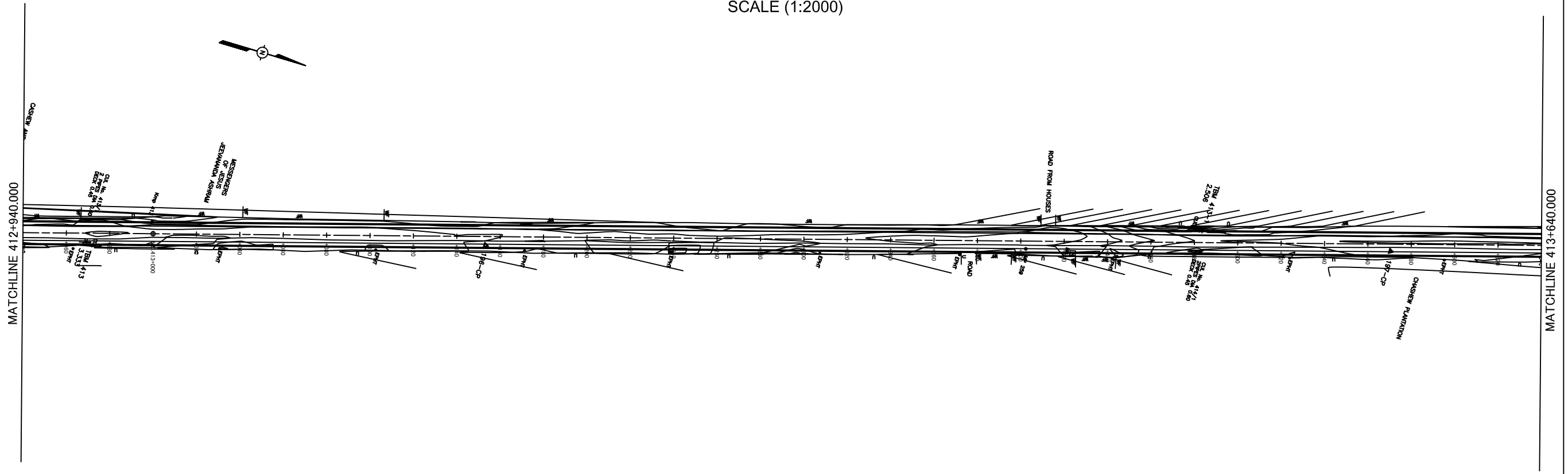
PROFILE  
SCALE ( H =1:2000 V = 1:400)



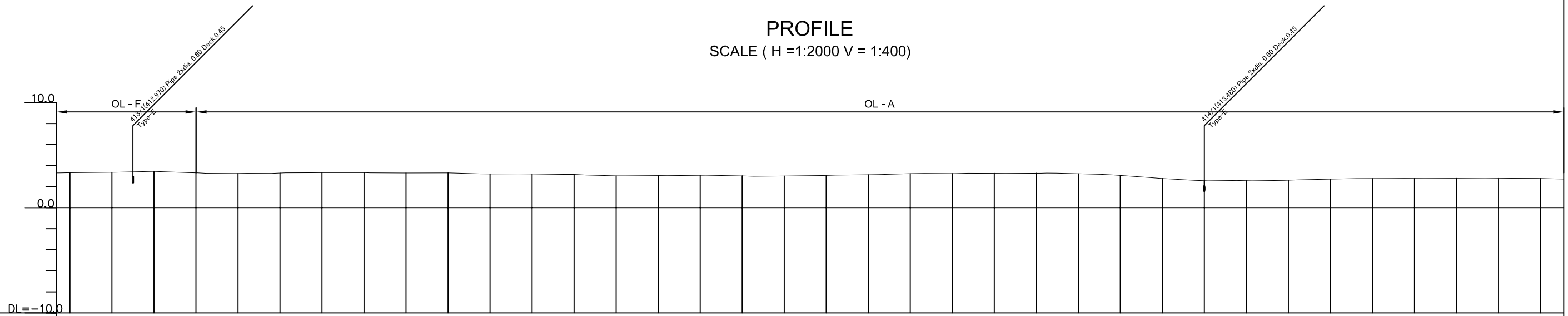
GRADE																																																			
PROPOSED ROAD LEVELS	VARY																																																		
EXISTING GROUND LEVELS	2.251	2.202	2.127	1.939	1.983	2.050	2.193	2.269	2.283	2.268	2.253	2.385	2.437	2.433	2.654	2.772	2.884	3.105	3.180	3.344	3.370	3.368	3.335	3.283	3.236	3.140	3.166	3.166	3.097	2.999	2.875	2.840	2.866	2.854	2.808	2.802	2.800	2.829	2.847	2.881	2.974	3.063	3.111	3.110	3.054	3.148	3.223	3.238	3.259	3.289	3.319
STATION (km)	+240.000	+250.000	+260.000	+280.000	+300.000	+310.000	+320.000	+330.000	+340.000	+350.000	+360.000	+380.000	+390.000	+400.000	+420.000	+430.000	+440.000	+454.990	+460.000	+480.000	+500.000	+506.582	+520.000	+530.000	+540.000	+560.000	+580.000	+600.000	+620.000	+640.000	+650.000	+660.000	+676.073	+680.000	+700.000	+703.082	+720.000	+729.906	+740.000	+750.000	+760.000	+780.000	+800.000	+820.000	+840.000	+860.000	+880.000	+900.000	+920.000	+930.000	+940.000
CURVE BAND	R=292.303		R=300.000 L=104.246														R=300.000 L=169.491										R=300.000 L=53.833																								

THE DEMOCRATIC SOCIALIST REPUBLIC OF SRI LANKA MINISTRY OF HIGHWAYS  	JAPAN INTERNATIONAL COOPERATION AGENCY ORIENTAL CONSULTANTS CO., LTD. NIPPON KOEI CO., LTD. JAPAN ENGINEERING CONSULTANTS CO., LTD.	THE PRO-POOR EASTERN INFRASTRUCTURE DEVELOPMENT PROJECT		DESIGNED BY:	
		PLANE & PROFILE 412+240~412+940		CHECKED BY:	
				APPROVED BY:	
		No	REVISION	DATE	DWG. NO. B-070

PLAN  
SCALE (1:2000)



PROFILE  
SCALE ( H =1:2000 V = 1:400)



GRADE																																										
PROPOSED ROAD LEVELS	VARY																																									
EXISTING GROUND LEVELS	3.319	3.362	3.404	3.443	3.313	3.255	3.246	3.288	3.327	3.327	3.298	3.304	3.202	3.201	3.159	3.024	3.046	3.077	3.020	2.990	3.008	3.061	3.127	3.231	3.250	3.237	3.258	3.267	3.221	3.060	2.919	2.766	2.563	2.560	2.568	2.605	2.709	2.765	2.773	2.775	2.775	2.771
STATION (km)	+940.000	+960.000	+970.000	+980.000	NO.413	+10.000	+20.000	+40.000	+60.000	+80.000	+100.000	+120.000	+140.000	+160.000	+180.000	+200.000	+220.000	+240.000	+260.000	+270.000	+280.000	+300.000	+320.000	+340.000	+350.000	+360.000	+380.000	+400.000	+420.000	+440.000	+450.000	+460.000	+480.000	+500.000	+510.000	+520.000	+540.000	+560.000	+580.000	+600.000	+620.000	+640.000
CURVE BAND	$R = 1181.278$																																									

THE DEMOCRATIC SOCIALIST REPUBLIC OF SRI LANKA  
MINISTRY OF HIGHWAYS  
**Road Development Authority**

**JICA** JAPAN INTERNATIONAL COOPERATION AGENCY  
**OC** ORIENTAL CONSULTANTS CO., LTD.  
**NK** NIPPON KOEI CO., LTD.  
**JEC** JAPAN ENGINEERING CONSULTANTS CO., LTD.

No	REVISION	DATE

THE PRO-POOR EASTERN INFRASTRUCTURE DEVELOPMENT PROJECT  
**PLANE & PROFILE**  
412+940~413+640

DESIGNED BY:	
CHECKED BY:	
APPROVED BY:	
DWG. NO.	B-071