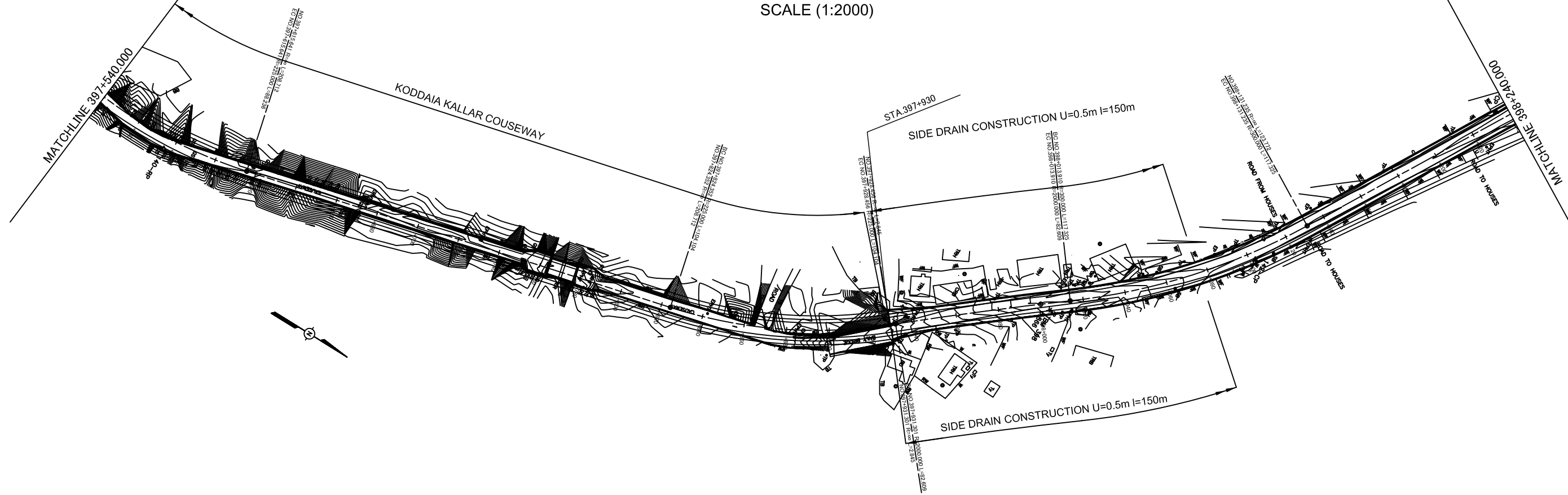
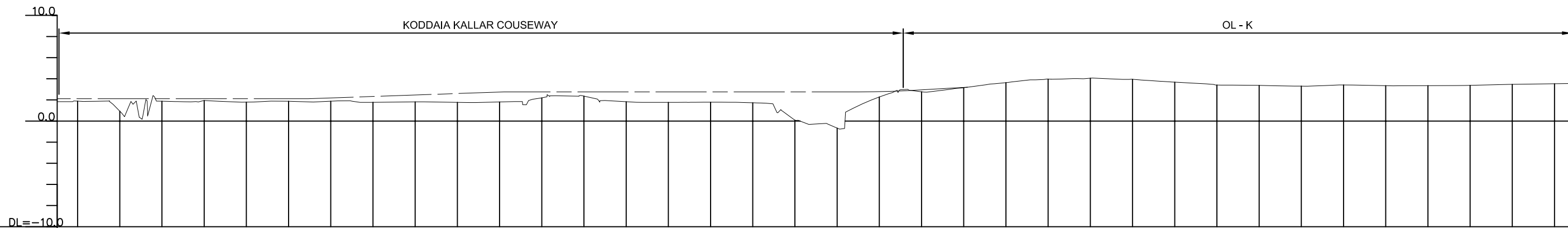


PLAN
SCALE (1:2000)



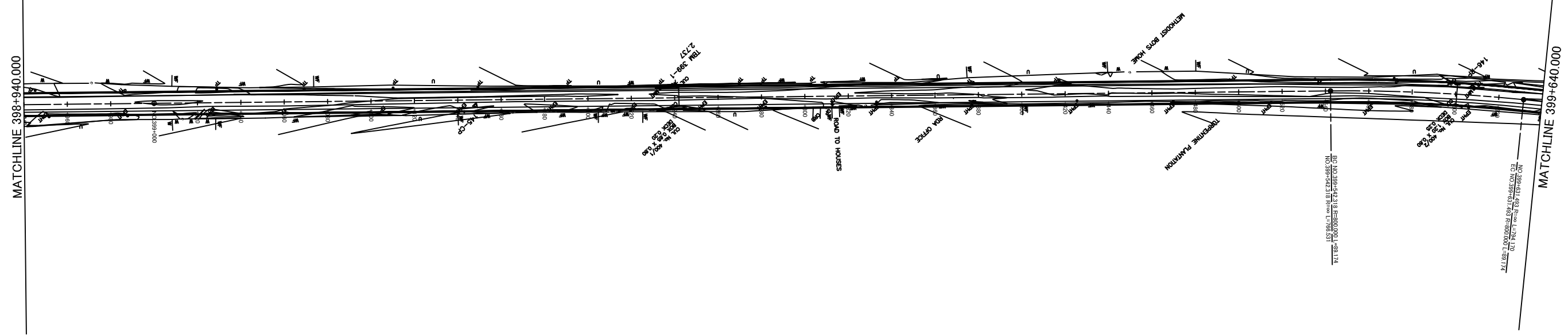
PROFILE
SCALE (H =1:2000 V = 1:400)



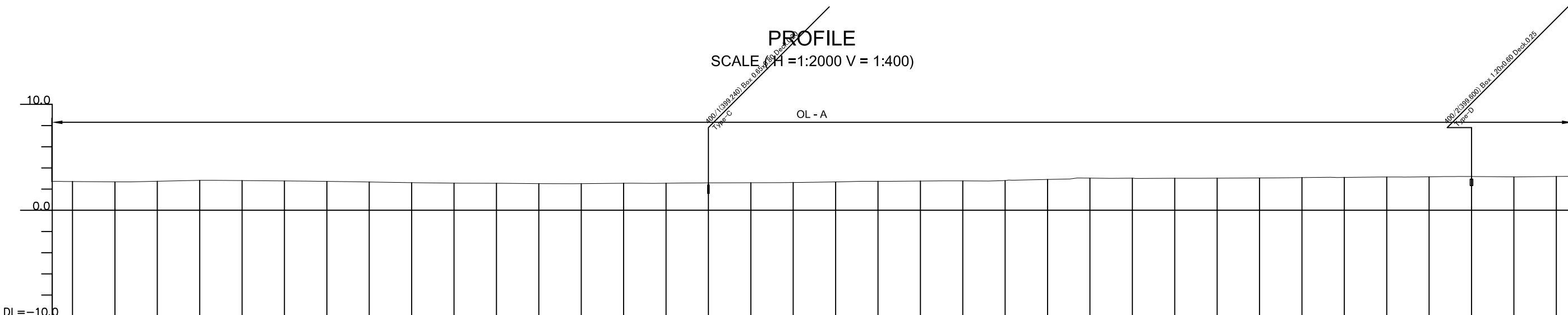
GRADE	KODDAIA KALLAR COUSEWAY																																														
PROPOSED ROAD LEVELS	VARY																																														
EXISTING GROUND LEVELS	1.886	0.941	1.759	1.880	1.944	1.803	1.794	1.879	1.823	1.884	1.777	1.822	1.775	1.800	2.195	2.366	1.833	1.773	1.774	1.786	1.732	0.867	-0.663	1.446	2.286	2.885	2.774	3.159	3.568	3.638	3.973	4.009	4.021	4.061	3.952	3.686	3.539	3.409	3.379	3.308	3.363	3.418	3.351	3.355	3.380	3.474	3.535
STATION (km)	+540.000	+560.000	+572.097	+580.000	+600.000	+615.641	+620.000	+640.000	+649.236	+660.000	+680.000	+700.000	+720.000	+742.898	+760.000	+780.000	+800.000	+820.000	+824.352	+840.000	+860.000	+867.353	+900.000	+910.000	+920.000	+937.381	+940.000	+960.000	+970.000	+980.000	NO.398	+10.000	+13.810	+20.000	+40.000	+60.000	+73.332	+80.000	+100.000	+120.000	+131.235	+140.000	+160.000	+180.000	+200.000	+220.000	+240.000
CURVE BAND	R=225.000 L=88.236				R=∞				R=∞				R=∞				R=225.000 L=104.104				R=∞				R=2000.000 L=82.609				R=300.000 L=117.325				R=∞ L=123.772														

THE DEMOCRATIC SOCIALIST REPUBLIC OF SRI LANKA MINISTRY OF HIGHWAYS 	JAPAN INTERNATIONAL COOPERATION AGENCY ORIENTAL CONSULTANTS CO., LTD. NIPPON KOEI CO., LTD. JAPAN ENGINEERING CONSULTANTS CO., LTD.	THE PRO-POOR EASTERN INFRASTRUCTURE DEVELOPMENT PROJECT		DESIGNED BY:	
		PLANE & PROFILE 397+540-398+240		CHECKED BY:	
				APPROVED BY:	
				DWG. NO. B-049	
No	REVISION	DATE			

PLAN
SCALE (1:2000)



PROFILE
SCALE H=1:2000 V=1:400



GRADE																																												
PROPOSED ROAD LEVELS	VARY																																											
EXISTING GROUND LEVELS	2.704	2.688	2.673	2.706	2.729	2.816	2.795	2.787	2.761	2.716	2.661	2.599	2.574	2.551	2.540	2.501	2.500	2.506	2.543	2.545	2.564	2.579	2.590	2.612	2.665	2.727	2.750	2.769	2.796	2.901	3.024	3.020	3.014	3.024	3.040	3.074	3.089	3.127	3.152	3.171	3.174	3.141	3.165	3.182
STATION (km)	+940.000	+950.000	+960.000	+975.000	+980.000	NO.399	+20.000	+25.000	+40.000	+60.000	+80.000	+100.000	+110.000	+120.000	+140.000	+160.000	+170.000	+180.000	+200.000	+220.000	+230.000	+240.000	+260.000	+280.000	+300.000	+320.000	+340.000	+360.000	+380.000	+400.000	+420.000	+440.000	+460.000	+480.000	+500.000	+520.000	+540.000	+560.000	+580.000	+586.952	+600.000	+620.000	+631.493	+640.000
CURVE BAND																					R=800.000 L=766.531								R=800.000 L=89.174															

THE DEMOCRATIC SOCIALIST REPUBLIC OF SRI LANKA
MINISTRY OF HIGHWAYS

jica JAPAN INTERNATIONAL COOPERATION AGENCY
 ORIENTAL CONSULTANTS CO., LTD.
 NIPPON KOEI CO., LTD.
 JAPAN ENGINEERING CONSULTANTS CO., LTD.

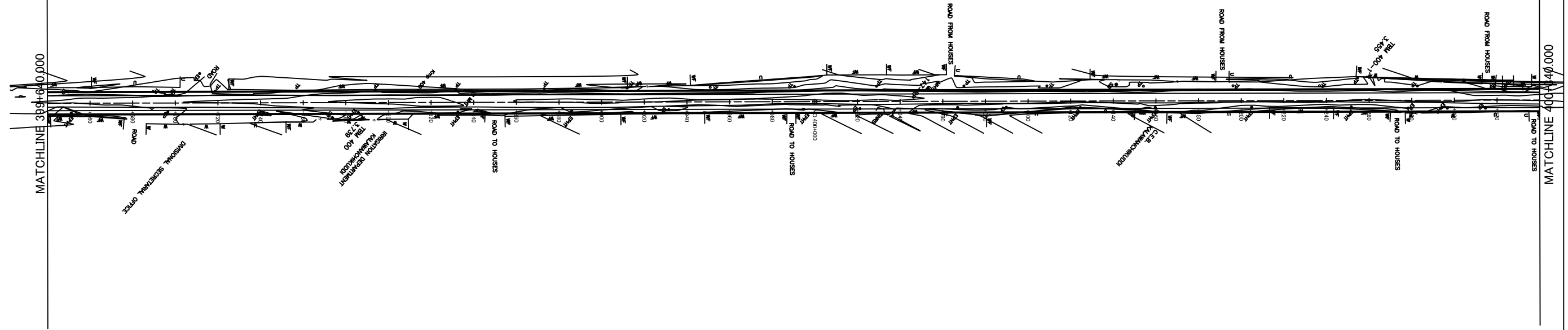
No.	REVISION	DATE

THE PRO-POOR EASTERN INFRASTRUCTURE DEVELOPMENT PROJECT

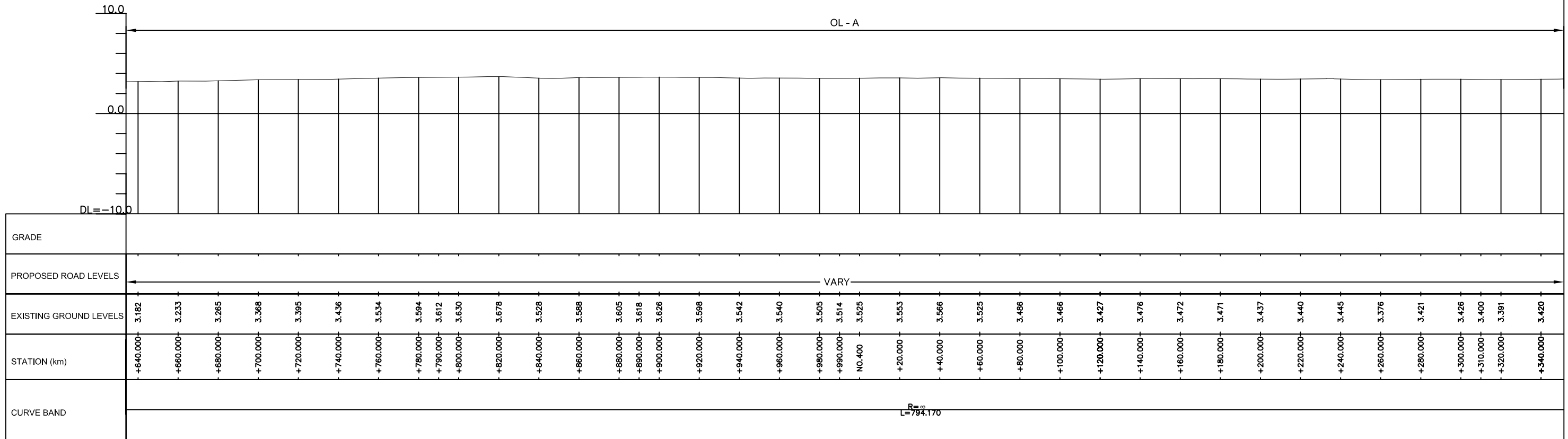
PLANE & PROFILE
398+940~399+640

DESIGNED BY:	
CHECKED BY:	
APPROVED BY:	
DWG. NO.	B-051

PLAN
SCALE (1:2000)



PROFILE
SCALE (H =1:2000 V = 1:400)



THE DEMOCRATIC SOCIALIST REPUBLIC OF SRI LANKA
MINISTRY OF HIGHWAYS



JAPAN INTERNATIONAL COOPERATION AGENCY
 ORIENTAL CONSULTANTS CO., LTD.
 NIPPON KOEI CO., LTD.
 JAPAN ENGINEERING CONSULTANTS CO., LTD.

No	REVISION	DATE

THE PRO-POOR EASTERN INFRASTRUCTURE DEVELOPMENT PROJECT

PLANE & PROFILE
399+640~400+340

DESIGNED BY:	
CHECKED BY:	
APPROVED BY:	
DWG. NO.	B-052

