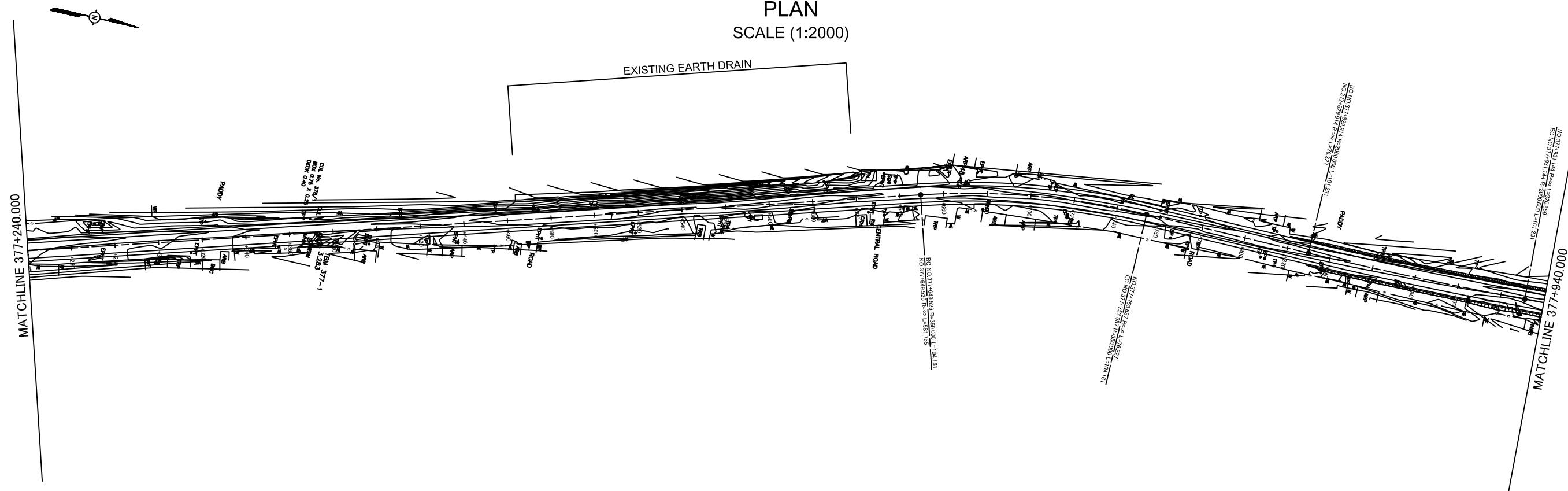
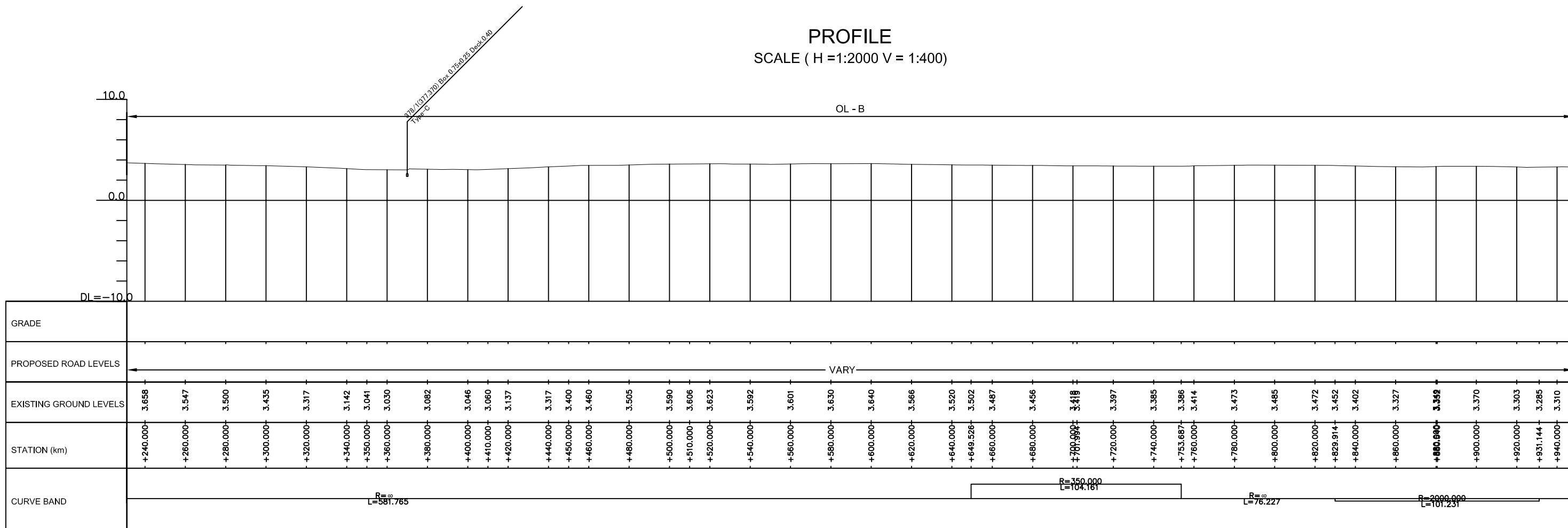


PLAN
SCALE (1:2000)



PROFILE
SCALE (H =1:2000 V = 1:400)



THE DEMOCRATIC SOCIALIST REPUBLIC OF SRI LANKA
MINISTRY OF HIGHWAYS



JAPAN INTERNATIONAL COOPERATION AGENCY
 ORIENTAL CONSULTANTS CO., LTD.
 NIPPON KOEI CO., LTD.
 JAPAN ENGINEERING CONSULTANTS CO., LTD.

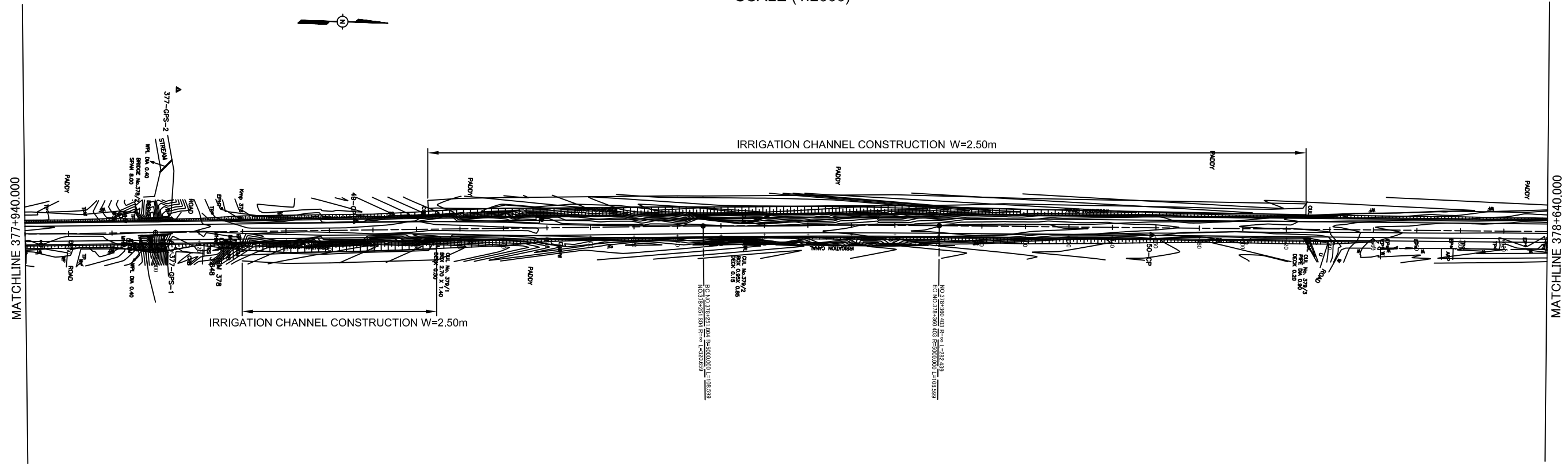
No	REVISION	DATE

THE PRO-POOR EASTERN INFRASTRUCTURE DEVELOPMENT PROJECT

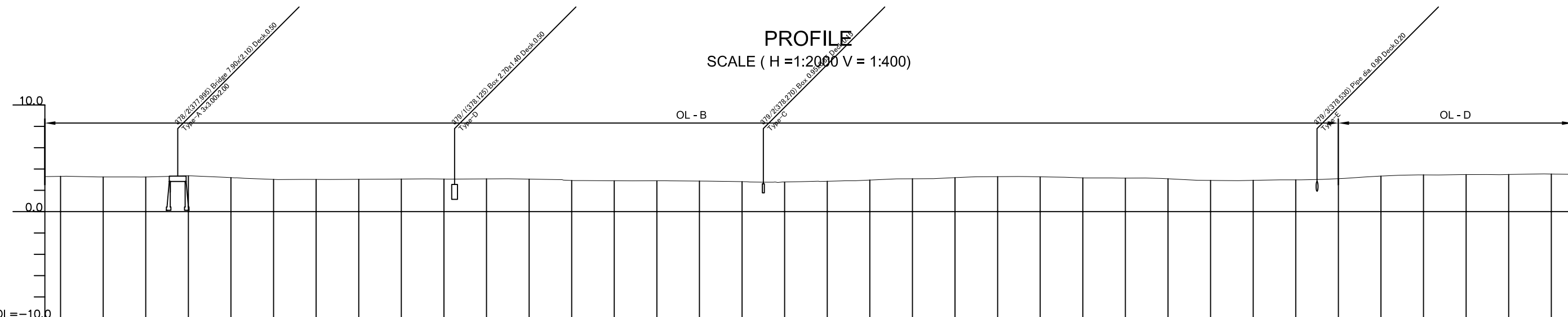
PLANE & PROFILE
377+240~377+940

DESIGNED BY:	
CHECKED BY:	
APPROVED BY:	
DWG. NO.	B-020

PLAN
SCALE (1:2000)



PROFILE
SCALE (H = 1:2000 V = 1:400)



GRADE																																														
PROPOSED ROAD LEVELS	VARY																																													
EXISTING GROUND LEVELS	3.310	3.250	3.253	3.250	3.359	3.191	3.100	3.026	3.018	3.028	3.056	3.057	3.071	3.048	2.918	2.895	2.892	2.868	2.849	2.809	2.781	2.847	2.880	2.897	2.961	3.081	3.096	3.180	3.280	3.263	3.229	3.168	3.144	3.079	2.982	2.928	2.935	2.985	3.015	3.089	3.331	3.420	3.445	3.471	3.485	3.529
STATION (km)	+940.000	+960.000	+970.000	+980.000	NO. 378	+20.000	+30.000	+40.000	+60.000	+80.000	+100.000	+120.000	+140.000	+160.000	+180.000	+200.000	+220.000	+240.000	+250.000	+260.000	+280.000	+300.000	+306.105	+310.000	+320.000	+340.000	+350.000	+360.000	+380.000	+400.000	+410.000	+420.000	+440.000	+460.000	+470.000	+480.000	+500.000	+520.000	+530.000	+540.000	+560.000	+570.000	+580.000	+600.000	+620.000	+640.000
CURVE BAND											R=∞ L=320.659											R=5000.000 L=108.599											R=∞ L=282.439													

THE DEMOCRATIC SOCIALIST REPUBLIC OF SRI LANKA
MINISTRY OF HIGHWAYS



JICA JAPAN INTERNATIONAL COOPERATION AGENCY

ORIENTAL CONSULTANTS CO., LTD.

NIPPON KOEI CO., LTD.

JEC JAPAN ENGINEERING CONSULTANTS CO., LTD.

No	REVISION	DATE

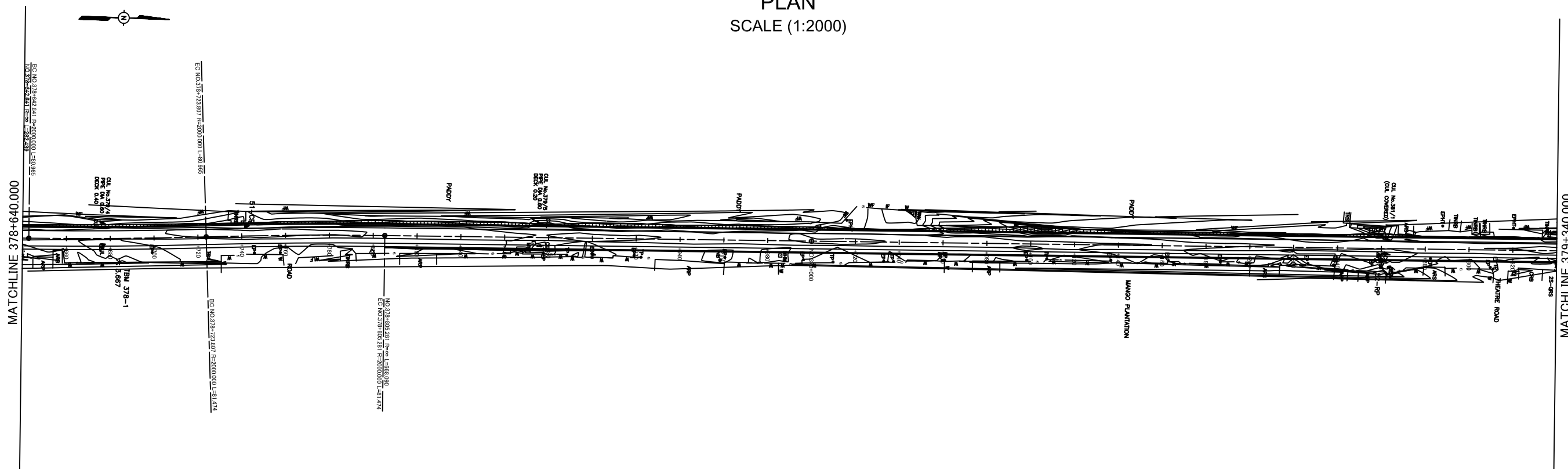
THE PRO-POOR EASTERN INFRASTRUCTURE DEVELOPMENT PROJECT

PLANE & PROFILE

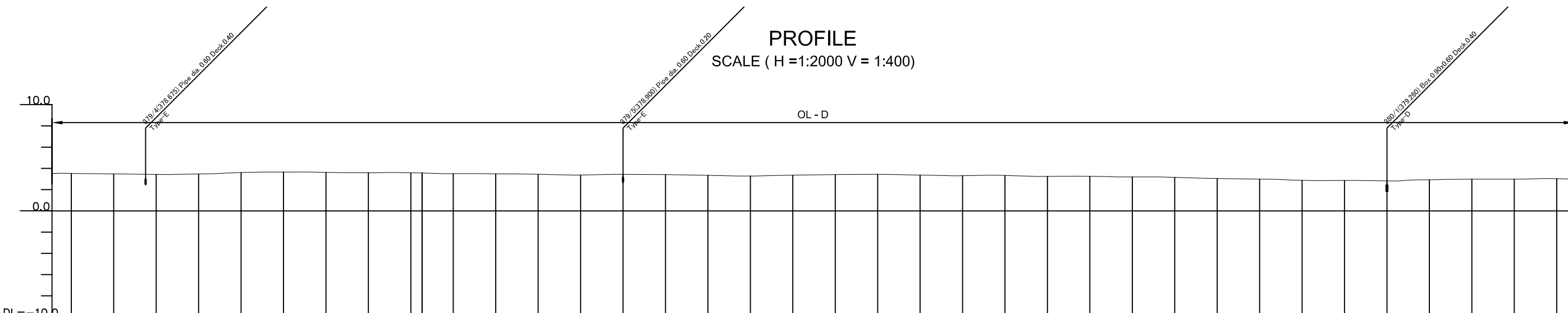
377+940~378+640

DESIGNED BY:	
CHECKED BY:	
APPROVED BY:	
DWG. NO.	B-021

PLAN
SCALE (1:2000)



PROFILE
SCALE (H =1:2000 V = 1:400)



GRADE																																													
PROPOSED ROAD LEVELS	VARY																																												
EXISTING GROUND LEVELS	3.528	3.479	3.431	3.470	3.606	3.630	3.652	3.629	3.613	3.588	3.584	3.589	3.536	3.505	3.506	3.490	3.480	3.444	3.373	3.419	3.442	3.415	3.347	3.303	3.283	3.361	3.419	3.442	3.369	3.309	3.331	3.246	3.253	3.198	3.152	3.050	2.988	2.876	2.861	2.852	2.823	2.928	2.983	2.988	3.029
STATION (km)	+640.000	+660.000	+680.000	+700.000	+720.000	+723.807	+740.000	+760.000	+764.550	+780.000	+800.000	+803.804	+810.000	+820.000	+830.000	+840.000	+850.000	+860.000	+880.000	+890.000	+900.000	+920.000	+940.000	+950.000	+960.000	+980.000	NO.379	+20.000	+40.000	+60.000	+80.000	+100.000	+120.000	+140.000	+160.000	+180.000	+200.000	+220.000	+240.000	+250.000	+260.000	+280.000	+300.000	+320.000	+340.000
CURVE BAND	R=2000.000 L=80.985										R=2000.000 L=81.474										R=∞ L=668.090																								

THE DEMOCRATIC SOCIALIST REPUBLIC OF SRI LANKA
MINISTRY OF HIGHWAYS



JICA JAPAN INTERNATIONAL COOPERATION AGENCY

OC ORIENTAL CONSULTANTS CO., LTD.

NK NIPPON KOEI CO., LTD.

JEC JAPAN ENGINEERING CONSULTANTS CO., LTD.

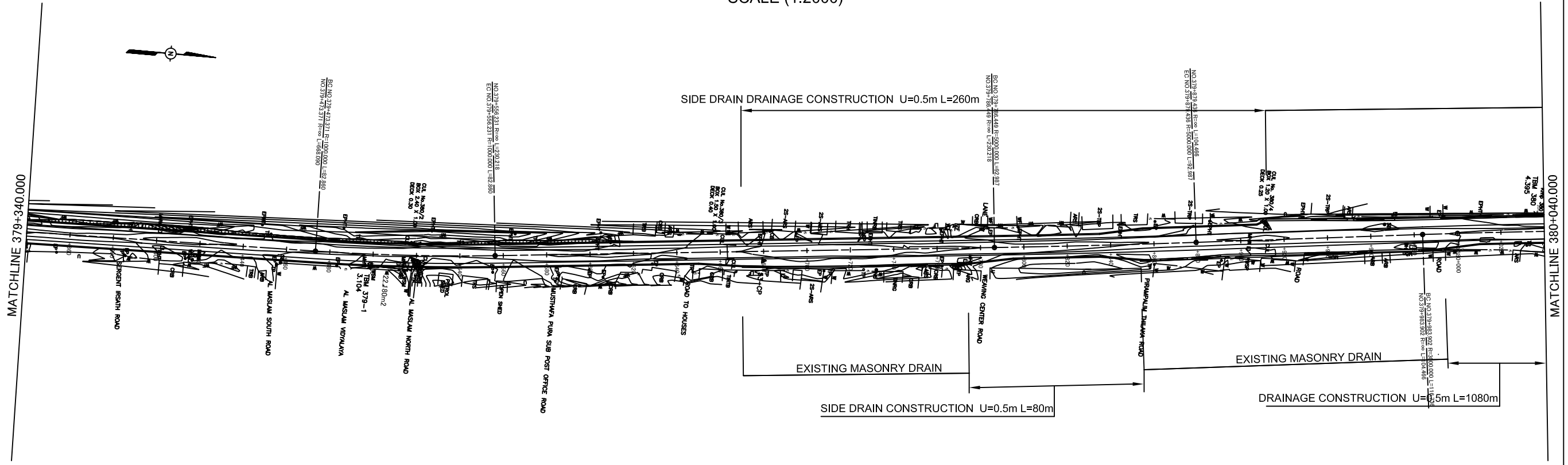
No	REVISION	DATE

THE PRO-POOR EASTERN INFRASTRUCTURE DEVELOPMENT PROJECT

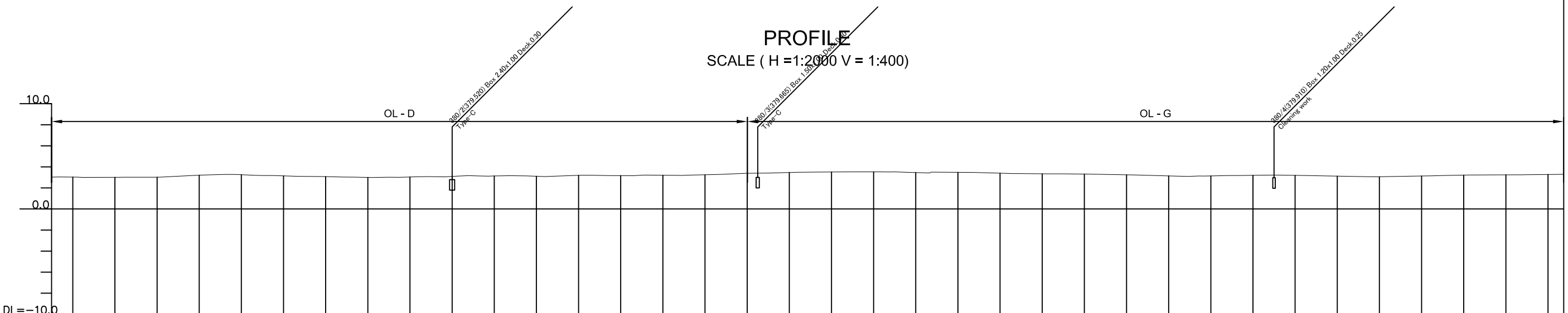
PLANE & PROFILE
378+640~379+340

DESIGNED BY:	
CHECKED BY:	
APPROVED BY:	
DWG. NO.	B-022

PLAN
SCALE (1:2000)



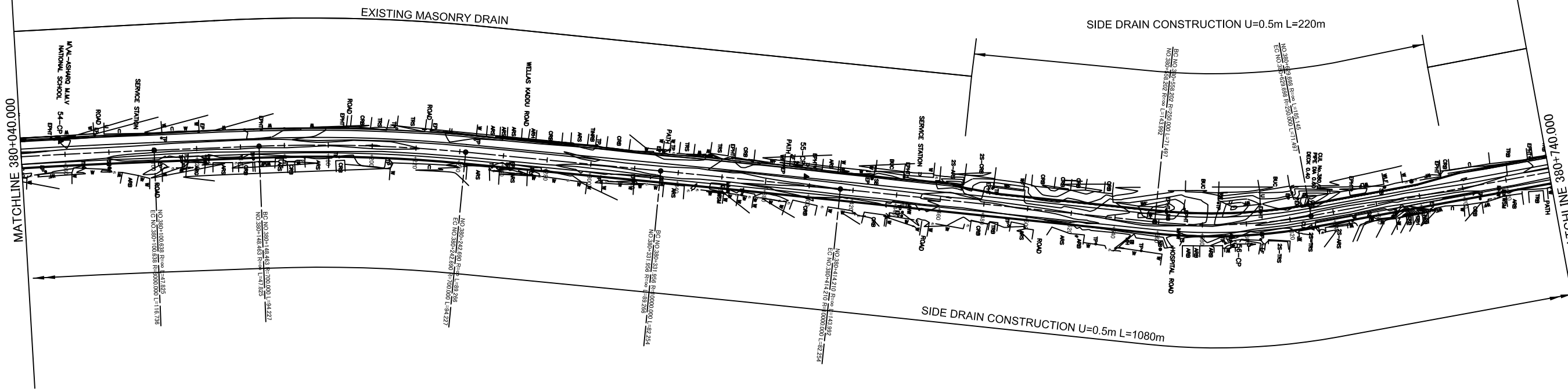
PROFILE
SCALE (H =1:2000 V = 1:400)



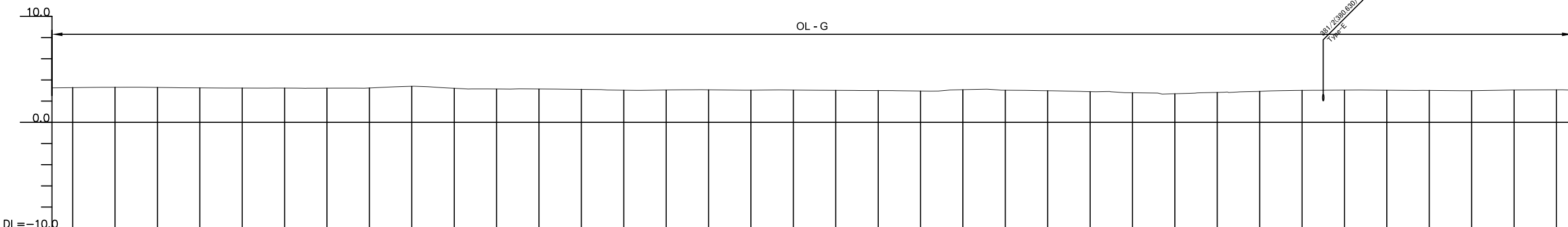
GRADE																																																		
PROPOSED ROAD LEVELS	VARY																																																	
EXISTING GROUND LEVELS	3.029	3.009	3.015	3.016	3.210	3.257	3.181	3.144	3.072	3.020	2.999	3.012	3.038	3.055	3.090	3.131	3.152	3.133	3.107	3.196	3.166	3.203	3.246	3.386	3.464	3.497	3.512	3.524	3.460	3.497	3.481	3.398	3.362	3.340	3.312	3.270	3.246	3.139	3.133	3.194	3.193	3.115	3.057	3.128	3.141	3.213	3.243	3.285		
STATION (km)	+340.000	+360.000	+370.000	+380.000	+400.000	+420.000	+430.000	+440.000	+460.000	+473.371	+480.000	+490.000	+500.000	+514.825	+520.000	+540.000	+550.000	+556.231	+560.000	+580.000	+600.000	+620.000	+640.000	+660.000	+680.000	+690.000	+700.000	+720.000	+740.000	+750.000	+760.000	+780.000	+786.449	+800.000	+820.000	+832.944	+840.000	+860.000	+886.600	+900.000	+920.000	+940.000	+960.000	+980.000	+983.902	NO.380	+20.000	+40.000		
CURVE BAND																R=1000.000 L=82.960											R=∞ L=230.218											R=5000.000 L=92.987						R=∞ L=104.466						R=3000.000 L=110.000

THE DEMOCRATIC SOCIALIST REPUBLIC OF SRI LANKA MINISTRY OF HIGHWAYS 	JAPAN INTERNATIONAL COOPERATION AGENCY ORIENTAL CONSULTANTS CO., LTD. NIPPON KOEI CO., LTD. JAPAN ENGINEERING CONSULTANTS CO., LTD.	THE PRO-POOR EASTERN INFRASTRUCTURE DEVELOPMENT PROJECT		DESIGNED BY:
		PLANE & PROFILE 379+340~380+040		CHECKED BY:
				APPROVED BY:
				DWG. NO. B-023
		No	REVISION	DATE

PLAN
SCALE (1:2000)



PROFILE
SCALE (H =1:2000 V = 1:400)



GRADE																																															
PROPOSED ROAD LEVELS	VARY																																														
EXISTING GROUND LEVELS	3.276	3.308	3.292	3.285	3.236	3.229	3.217	3.222	3.244	3.334	3.374	3.401	3.211	3.144	3.146	3.107	3.031	3.050	3.071	3.067	3.032	3.055	3.045	3.015	3.001	2.996	2.951	2.978	3.077	3.027	2.980	2.942	2.893	2.793	2.766	2.686	2.822	2.887	2.921	3.018	3.028	3.042	3.027	3.007	2.980	3.049	3.064
STATION (km)	380+040	380+060	380+080	380+100	380+120	380+140	380+148.463	380+160	380+180	380+190	380+195.648	380+200	380+220	380+242.888	380+260	380+280	380+300	380+320	380+331.956	380+340	380+360	380+373.083	380+380	380+400	380+414.210	380+420	380+440	380+450	380+460	380+480	380+500	380+510	380+520	380+540	380+550	380+558.362	380+580	380+594.196	380+600	380+620	380+628.998	380+640	380+660	380+680	380+700	380+720	380+740
CURVE BAND	R=3000.000 L=116.736		R=∞ L=47.825		R=700.000 L=94.227		R=∞		R=∞		R=∞		R=∞		R=∞		R=∞		R=∞		R=10000.000 L=82.254		R=∞		R=∞		R=∞		R=∞		R=∞		R=∞		R=∞		R=250.000 L=71.497		R=∞		R=∞		R=∞				

THE DEMOCRATIC SOCIALIST REPUBLIC OF SRI LANKA
MINISTRY OF HIGHWAYS



JAPAN INTERNATIONAL COOPERATION AGENCY
 ORIENTAL CONSULTANTS CO., LTD.
 NIPPON KOEI CO., LTD.
 JAPAN ENGINEERING CONSULTANTS CO., LTD.

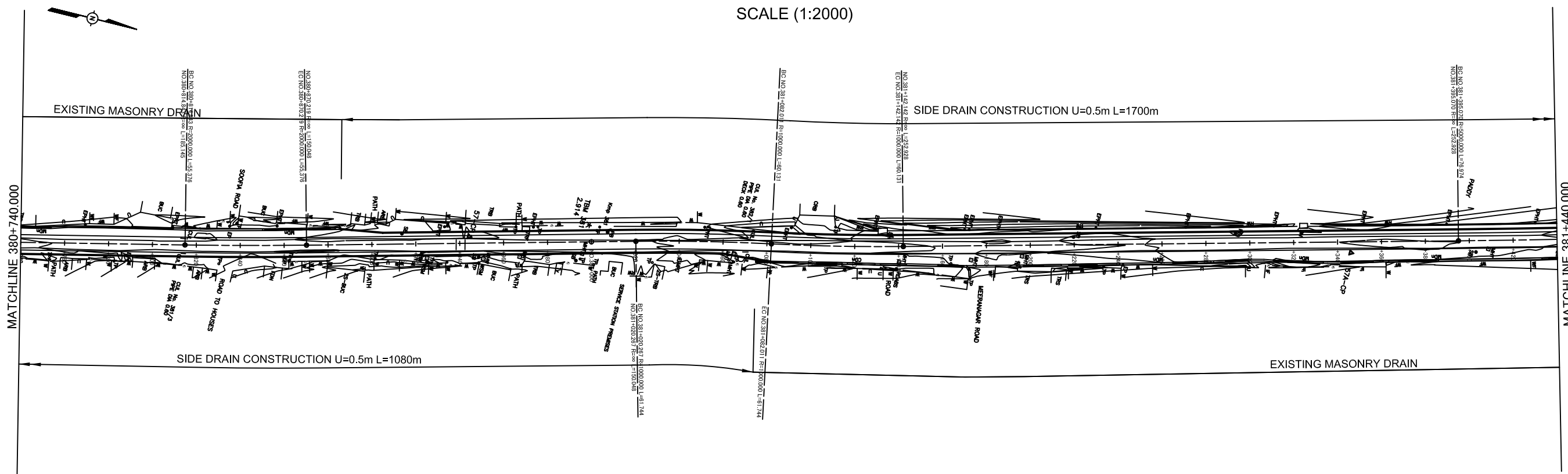
No	REVISION	DATE

THE PRO-POOR EASTERN INFRASTRUCTURE DEVELOPMENT PROJECT

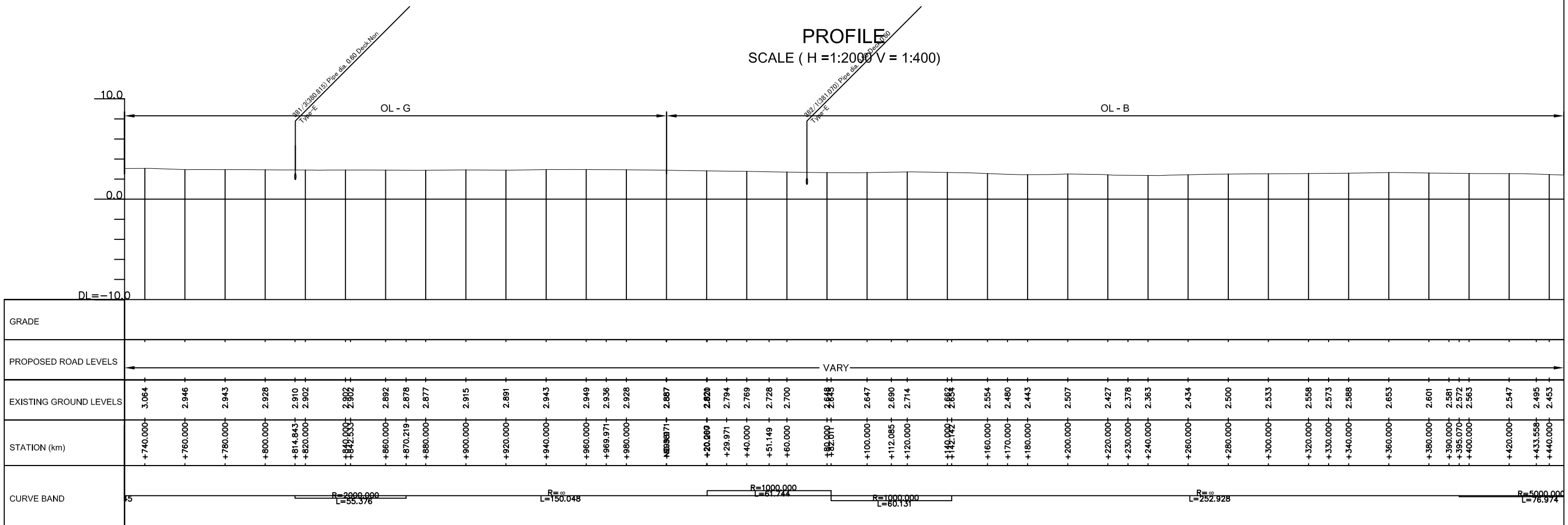
PLANE & PROFILE
380+040~380+740

DESIGNED BY:	
CHECKED BY:	
APPROVED BY:	
DWG. NO.	B-024

PLAN
SCALE (1:2000)



PROFILE
SCALE (H = 1:2000 V = 1:400)



THE DEMOCRATIC SOCIALIST REPUBLIC OF SRI LANKA
MINISTRY OF HIGHWAYS



JAPAN INTERNATIONAL COOPERATION AGENCY
 ORIENTAL CONSULTANTS CO., LTD.
 NIPPON KOEI CO., LTD.
 JAPAN ENGINEERING CONSULTANTS CO., LTD.

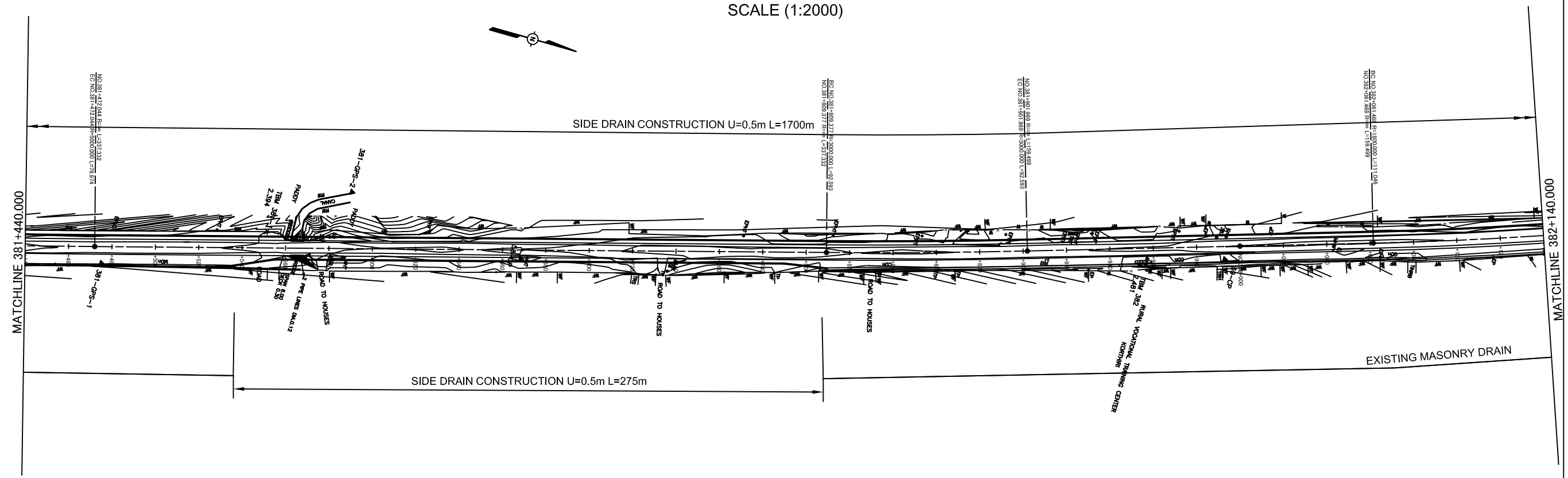
No	REVISION	DATE

THE PRO-POOR EASTERN INFRASTRUCTURE DEVELOPMENT PROJECT

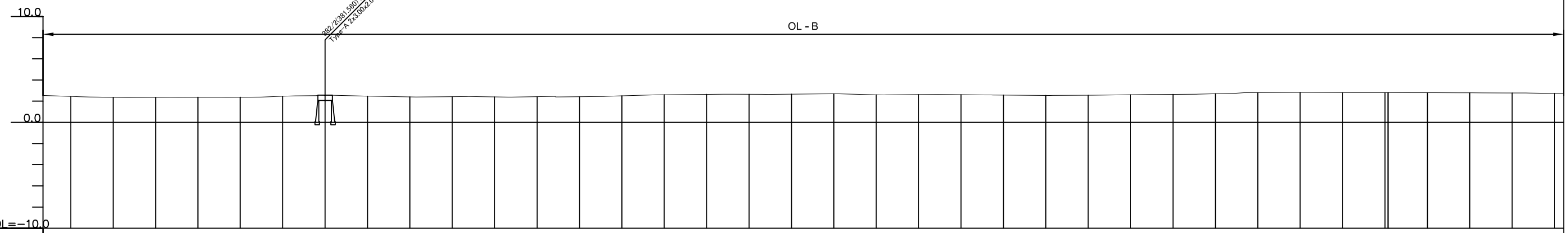
PLANE & PROFILE
380+740-381+440

DESIGNED BY:	
CHECKED BY:	
APPROVED BY:	
DWG. NO.	B-025

PLAN
SCALE (1:2000)



PROFILE
SCALE (H =1:2000 V = 1:400)



GRADE																																																	
PROPOSED ROAD LEVELS	VARY																																																
EXISTING GROUND LEVELS	2.495	2.453	2.360	2.343	2.355	2.365	2.371	2.390	2.464	2.576	2.473	2.437	2.401	2.424	2.403	2.426	2.421	2.504	2.562	2.609	2.646	2.652	2.645	2.665	2.696	2.656	2.598	2.620	2.622	2.614	2.595	2.576	2.542	2.565	2.579	2.604	2.640	2.640	2.704	2.806	2.826	2.812	2.866	2.804	2.800	2.789	2.778	2.761	2.733
STATION (km)	+433.558	+440.000	+460.000	+475.000	+480.000	+500.000	+520.000	+530.000	+540.000	+560.000	+580.000	+590.000	+600.000	+620.000	+640.000	+660.000	+680.000	+700.000	+710.000	+720.000	+740.000	+760.000	+770.000	+780.000	+800.000	+809.377	+820.000	+840.000	+855.677	+860.000	+870.000	+880.000	+900.969	+920.000	+930.000	+940.000	+960.000	+980.000	NO.382	+20.000	+40.000	+60.000	+70.000	+80.000	+100.000	+112.000	+130.000	+140.000	
CURVE BAND	R=5000.000 L=76.974		R=∞ L=337.332												R=3000.000 L=92.593				R=∞ L=159.499				R=1800.000 L=111.046																										

THE DEMOCRATIC SOCIALIST REPUBLIC OF SRI LANKA
MINISTRY OF HIGHWAYS

Road Development Authority

jica JAPAN INTERNATIONAL COOPERATION AGENCY

ORIENTAL CONSULTANTS CO., LTD.

NIPPON KOEI CO., LTD.

JEC JAPAN ENGINEERING CONSULTANTS CO., LTD.

No	REVISION	DATE

THE PRO-POOR EASTERN INFRASTRUCTURE DEVELOPMENT PROJECT

PLANE & PROFILE
381+440~382+140

DESIGNED BY: _____

CHECKED BY: _____

APPROVED BY: _____

DWG. NO. b-026