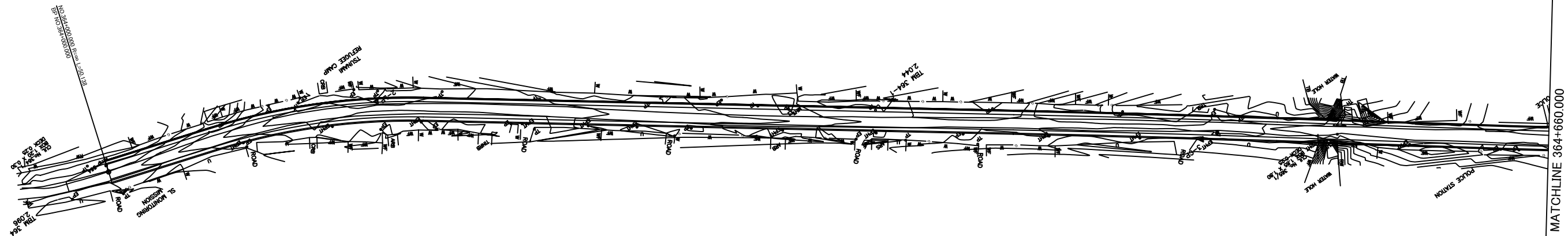
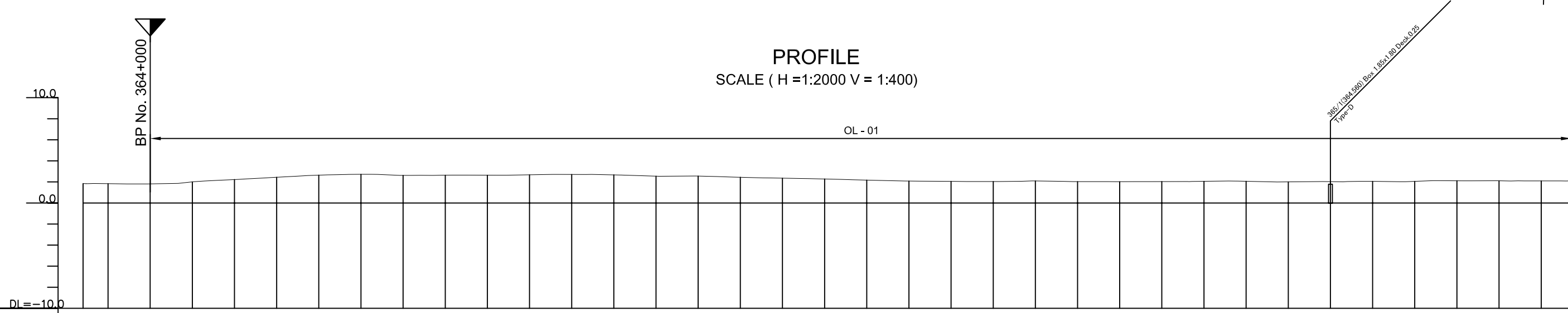


B. PLAN AND PROFILE

PLAN
SCALE (1:2000)

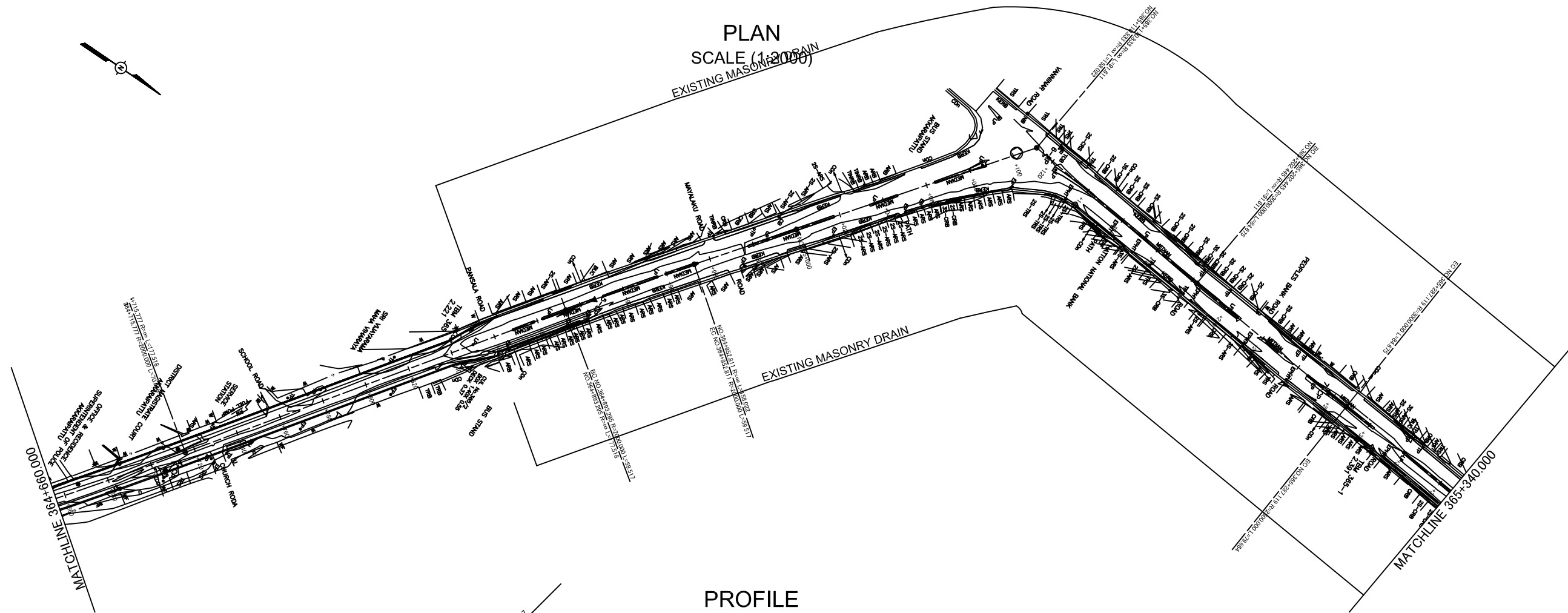


PROFILE
SCALE (H =1:2000 V = 1:400)

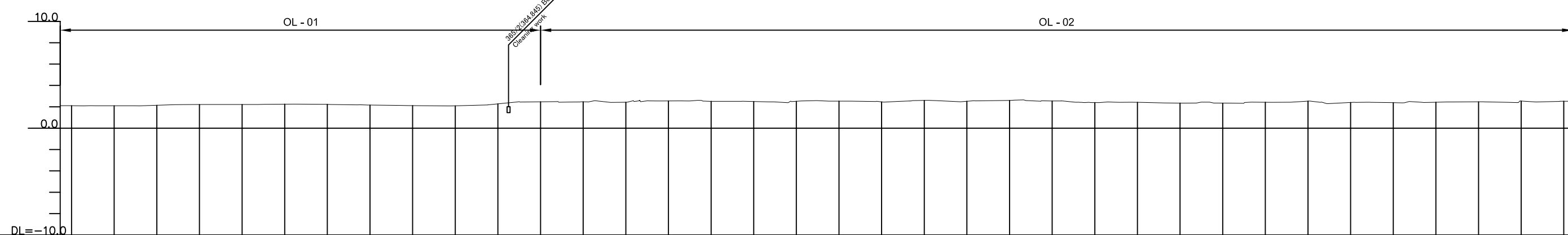


GRADE	VARY																																												
FINISHED ROAD LEVELS	VARY																																												
EXISTING GROUND LEVELS	1.835	1.813	2.004	2.224	2.333	2.440	2.644	2.695	2.720	2.622	2.637	2.646	2.641	2.641	2.675	2.708	2.670	2.610	2.547	2.551	2.441	2.358	2.278	2.172	2.122	2.083	2.055	2.032	2.050	2.083	2.056	2.060	2.000	2.030	2.057	2.053	2.052	2.109	2.105	2.106	2.091	2.098			
STATION (km)	+980.000	NO.364	+20.000	+40.000	+50.138	+60.000	+80.000	+90.000	+99.800	+120.000	+140.000	+147.945	+160.000	+170.000	+180.000	+200.000	+220.000	+230.000	+240.000	+260.000	+280.000	+300.000	+320.000	+340.000	+350.000	+360.000	+380.000	+400.000	+410.000	+428.438	+440.000	+460.000	+488.854	+500.000	+520.000	+548.854	+560.000	+575.000	+580.000	+600.000	+620.000	+625.000	+640.000	+645.730	+660.000
CURVE BAND	R=∞ L=90.138		R=300.000 L=97.806			R=∞ L=270.483										R=10000.000 L=120.806			R=∞ L=106.496																										

THE DEMOCRATIC SOCIALIST REPUBLIC OF SRI LANKA MINISTRY OF HIGHWAYS 	JAPAN INTERNATIONAL COOPERATION AGENCY ORIENTAL CONSULTANTS CO., LTD. NIPPON KOEI CO., LTD. JAPAN ENGINEERING CONSULTANTS CO., LTD.	THE PRO-POOR EASTERN INFRASTRUCTURE DEVELOPMENT PROJECT PLANE & PROFILE 364+000-364+660	DESIGNED BY:
			CHECKED BY:
		APPROVED BY:	
		DWG. NO.	B-001
No	REVISION	DATE	



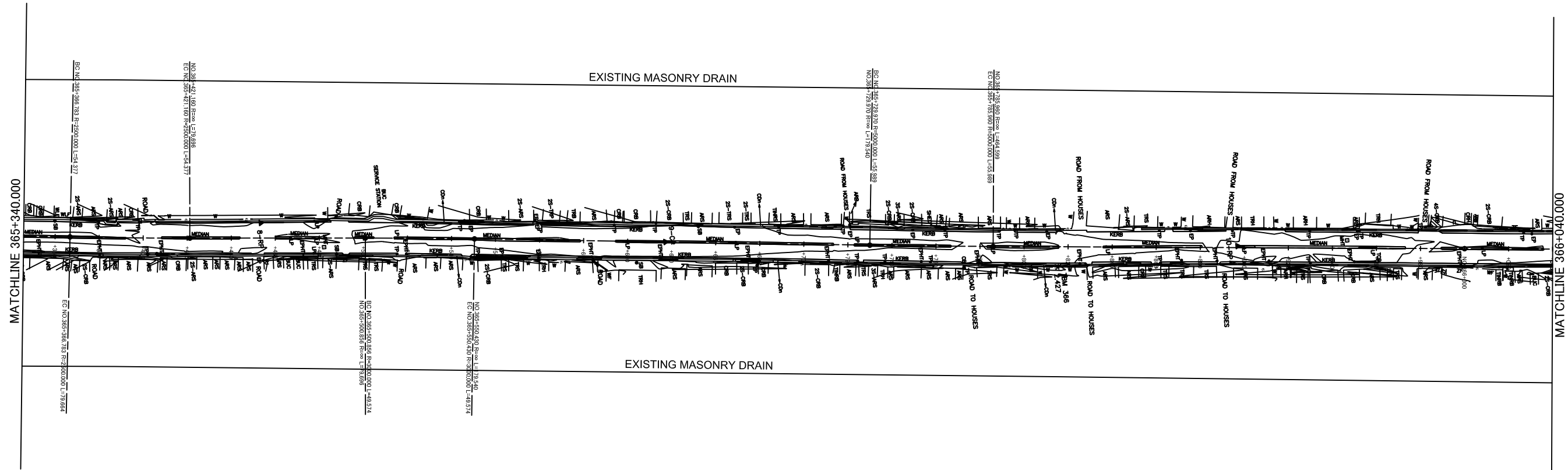
PROFILE
SCALE (H =1:2000 V = 1:400)



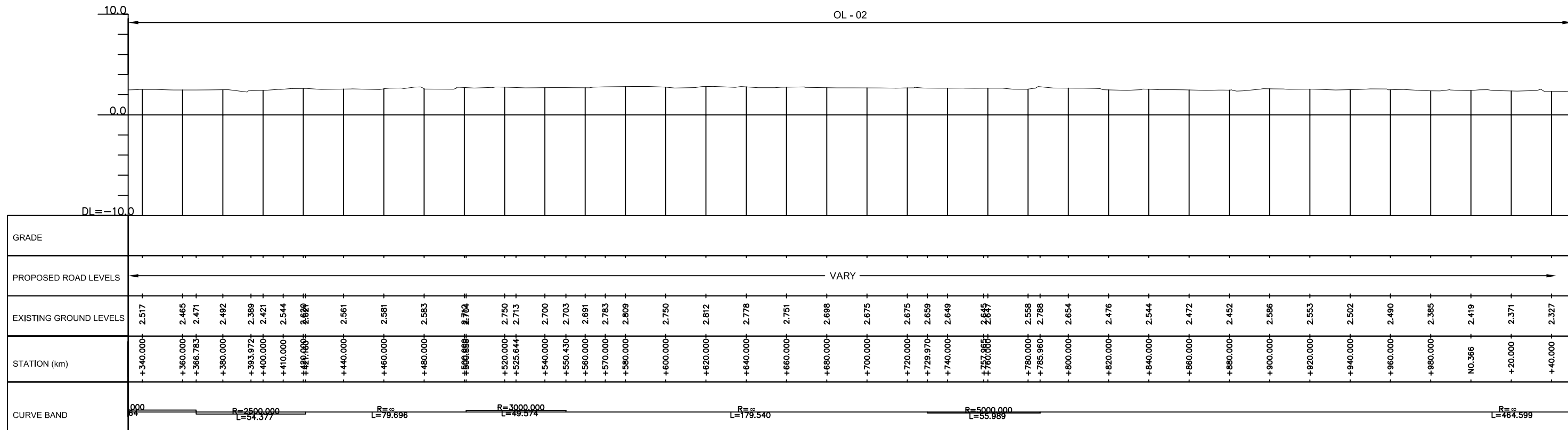
GRADE	OL - 01																				OL - 02																								
PROPOSED ROAD LEVELS	VARY																																												
EXISTING GROUND LEVELS	2.106	2.091	2.098	2.148	2.211	2.218	2.247	2.228	2.207	2.159	2.109	2.090	2.272	2.465	2.468	2.413	2.424	2.551	2.511	2.510	2.498	2.512	2.528	2.457	2.599	2.517	2.593	2.548	2.430	2.395	2.421	2.348	2.343	2.425	2.529	2.403	2.415	2.385	2.428	2.455	2.464	2.540	2.451	2.517	
STATION (km)	+640.000	+645.750	+660.000	+680.000	+700.000	+720.000	+740.000	+760.000	+765.000	+780.000	+800.000	+820.000	+840.000	+860.000	+880.000	+893.295	+900.000	+920.000	+933.065	+940.000	+952.811	+960.000	+980.000	NO.365	+20.000	+40.000	+60.000	+80.000	+100.000	+110.833	+120.000	+140.000	+160.000	+180.000	+200.000	+220.000	+240.000	+244.785	+260.000	+280.000	+287.119	+300.000	+320.000	+326.954	+340.000
CURVE BAND	R=2000.000 L=70.048					R=∞ L=177.518					R=2000.000 L=59.517					R=∞ L=158.022					R=∞ L=91.611					R=3000.000 L=84.675					R=2500.000 L=79.664														

THE DEMOCRATIC SOCIALIST REPUBLIC OF SRI LANKA MINISTRY OF HIGHWAYS 	JAPAN INTERNATIONAL COOPERATION AGENCY ORIENTAL CONSULTANTS CO., LTD. NIPPON KOEI CO., LTD. JAPAN ENGINEERING CONSULTANTS CO., LTD.	THE PRO-POOR EASTERN INFRASTRUCTURE DEVELOPMENT PROJECT		DESIGNED BY:
		PLANE & PROFILE 364+660 ~ 365+340		CHECKED BY:
			APPROVED BY:	
			DWG. NO. B-002	
No	REVISION	DATE		

PLAN
SCALE (1:2000)



PROFILE
SCALE (H =1:2000 V = 1:400)



THE DEMOCRATIC SOCIALIST REPUBLIC OF SRI LANKA
MINISTRY OF HIGHWAYS



JICA JAPAN INTERNATIONAL COOPERATION AGENCY
ORIENTAL CONSULTANTS CO., LTD.
NIPPON KOEI CO., LTD.
JEC JAPAN ENGINEERING CONSULTANTS CO., LTD.

No	REVISION	DATE

THE PRO-POOR EASTERN INFRASTRUCTURE DEVELOPMENT PROJECT

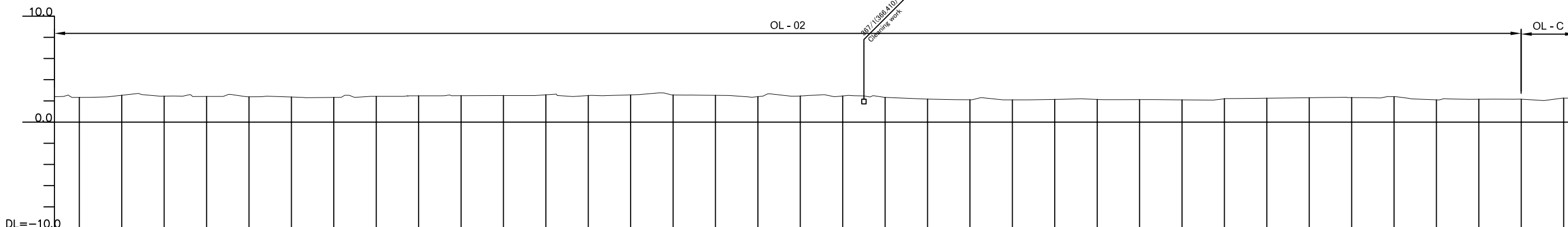
PLANE & PROFILE
365+340~366+040

DESIGNED BY:	
CHECKED BY:	
APPROVED BY:	
DWG. NO.	B-003

PLAN
SCALE (1:2000)



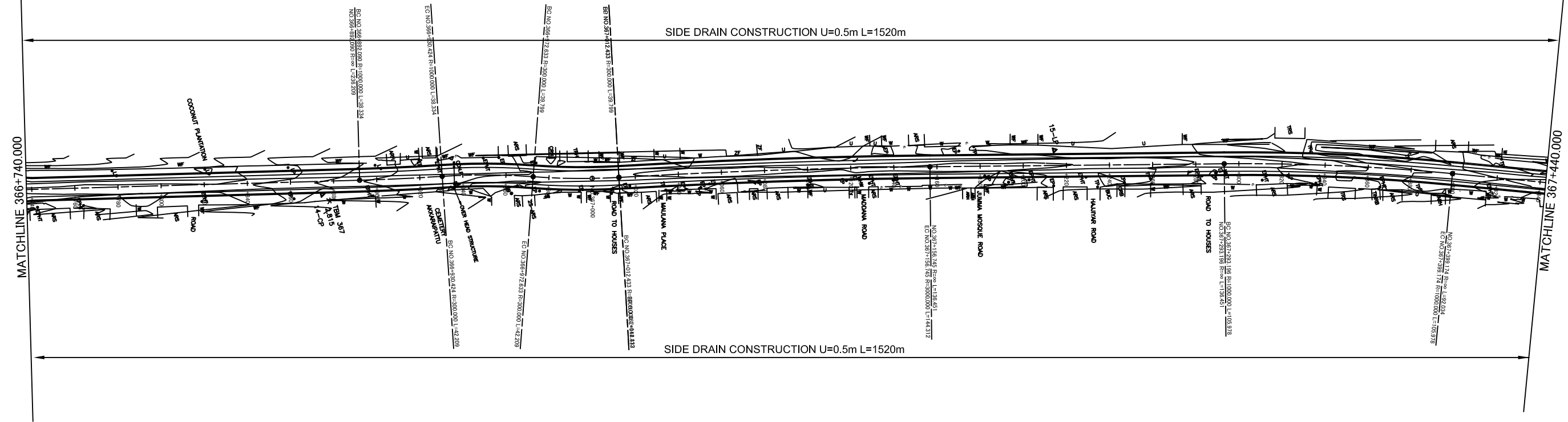
PROFILE
SCALE (H = 1:2000 V = 1:400)



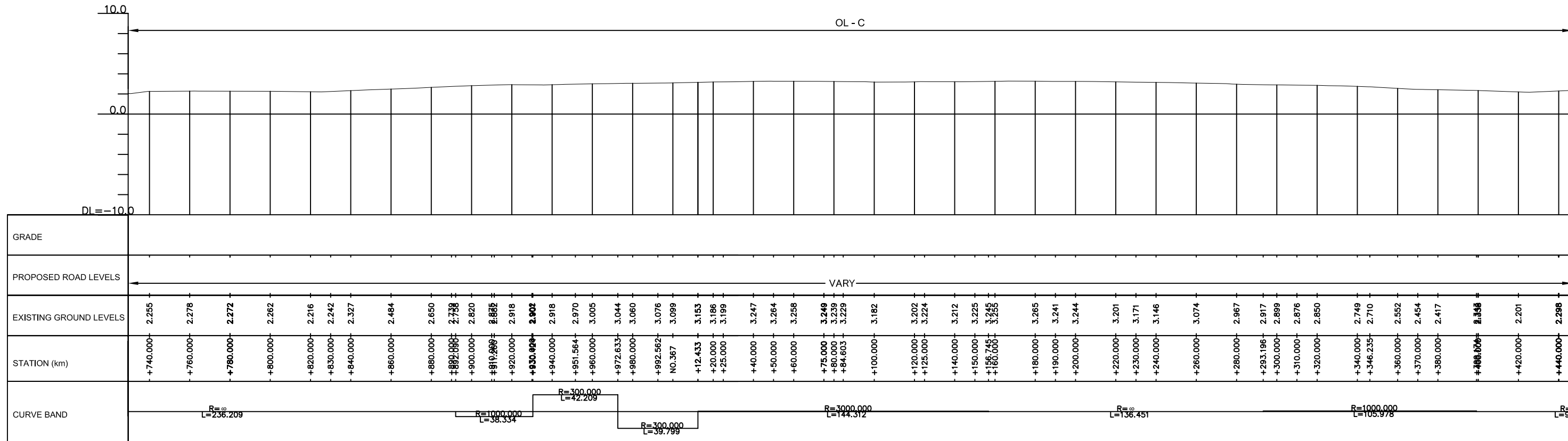
GRADE																																														
PROPOSED ROAD LEVELS	VARY																																													
EXISTING GROUND LEVELS	2.327	2.528	2.451	2.415	2.583	2.382	2.365	2.329	2.337	2.423	2.478	2.490	2.501	2.505	2.572	2.502	2.564	2.559	2.523	2.499	2.398	2.445	2.488	2.433	2.170	2.125	2.107	2.287	2.094	2.137	2.194	2.135	2.110	2.118	2.095	2.205	2.228	2.250	2.289	2.337	2.364	2.397	2.085	2.153	2.157	2.255
STATION (km)	+40.000	+60.000	+80.000	+100.000	+110.000	+120.000	+140.000	+160.000	+170.000	+180.000	+200.000	+220.000	+240.000	+250.558	+260.000	+280.000	+288.788	+320.000	+340.000	+346.836	+360.000	+377.612	+388.687	+428.188	+440.000	+450.000	+460.000	+464.837	+480.000	+500.000	+512.024	+520.000	+530.000	+540.000	+558.888	+580.000	+590.000	+600.000	+628.166	+637.000	+655.881	+660.000	+680.000	+700.000	+720.000	+740.000
CURVE BAND																R=3000.000 L=96.278			R=300.000 L=41.583			R=∞ L=30.776			R=∞ L=45.642			R=5000.000 L=94.372			R=∞ L=58.935			R=2000.000 L=37.738												

THE DEMOCRATIC SOCIALIST REPUBLIC OF SRI LANKA MINISTRY OF HIGHWAYS 	JAPAN INTERNATIONAL COOPERATION AGENCY ORIENTAL CONSULTANTS CO., LTD. NIPPON KOEI CO., LTD. JAPAN ENGINEERING CONSULTANTS CO., LTD.	THE PRO-POOR EASTERN INFRASTRUCTURE DEVELOPMENT PROJECT		DESIGNED BY:
		PLANE & PROFILE 366+040~366+740		CHECKED BY:
			APPROVED BY:	
			DWG. NO. B-004	
No	REVISION	DATE		

PLAN
SCALE (1:2000)



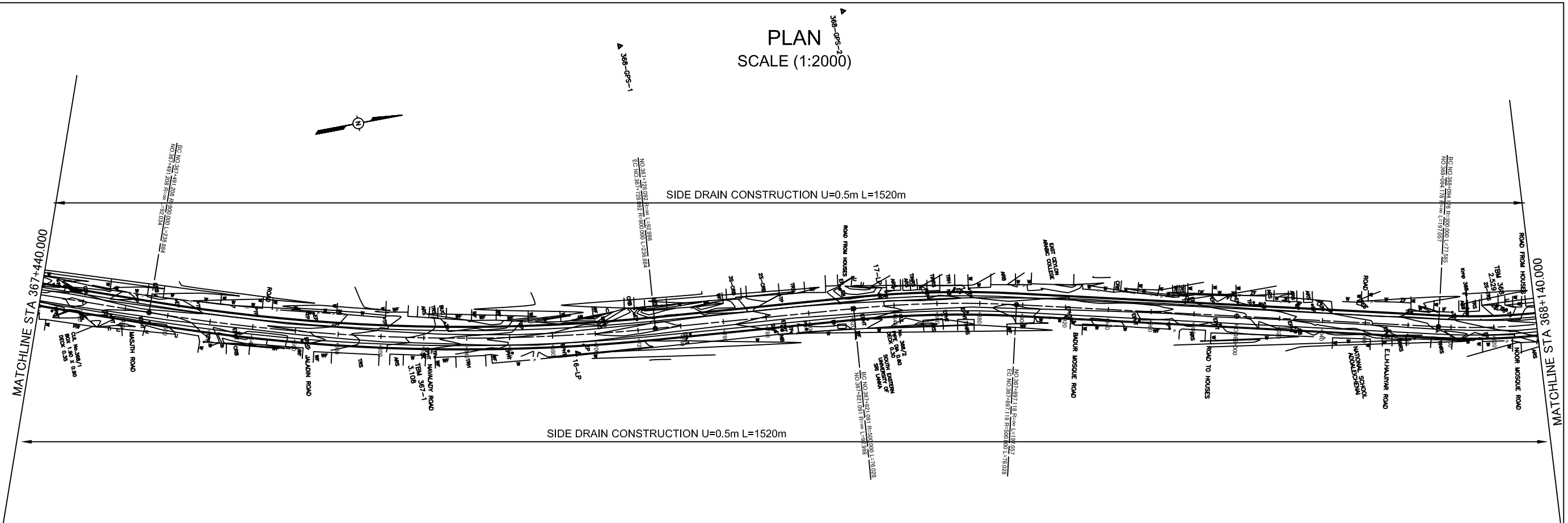
PROFILE
SCALE (H =1:2000 V = 1:400)



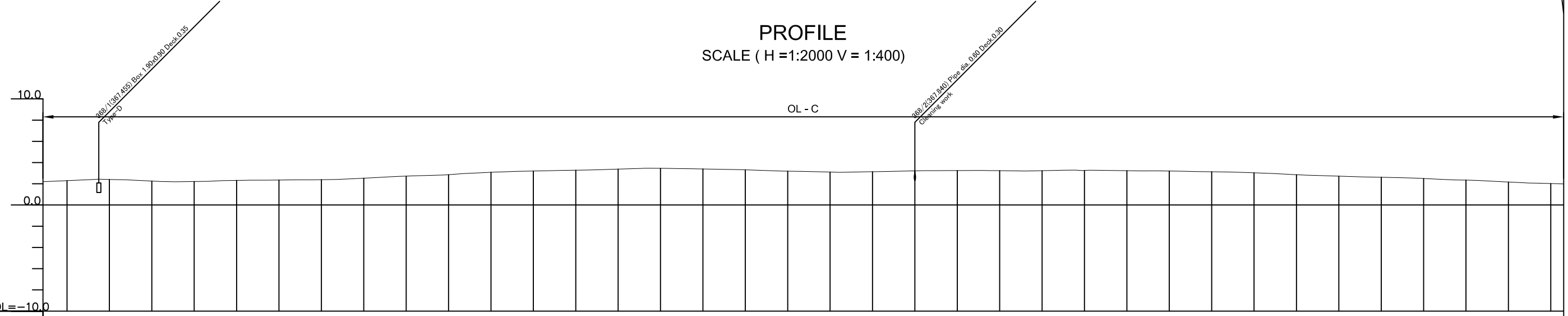
THE DEMOCRATIC SOCIALIST REPUBLIC OF SRI LANKA MINISTRY OF HIGHWAYS 	JAPAN INTERNATIONAL COOPERATION AGENCY ORIENTAL CONSULTANTS CO., LTD. NIPPON KOEI CO., LTD. JAPAN ENGINEERING CONSULTANTS CO., LTD.	THE PRO-POOR EASTERN INFRASTRUCTURE DEVELOPMENT PROJECT PLANE & PROFILE 366+740~367+440	DESIGNED BY:
			CHECKED BY:
			APPROVED BY:
			DWG. NO. B-005

No	REVISION	DATE

PLAN
SCALE (1:2000)



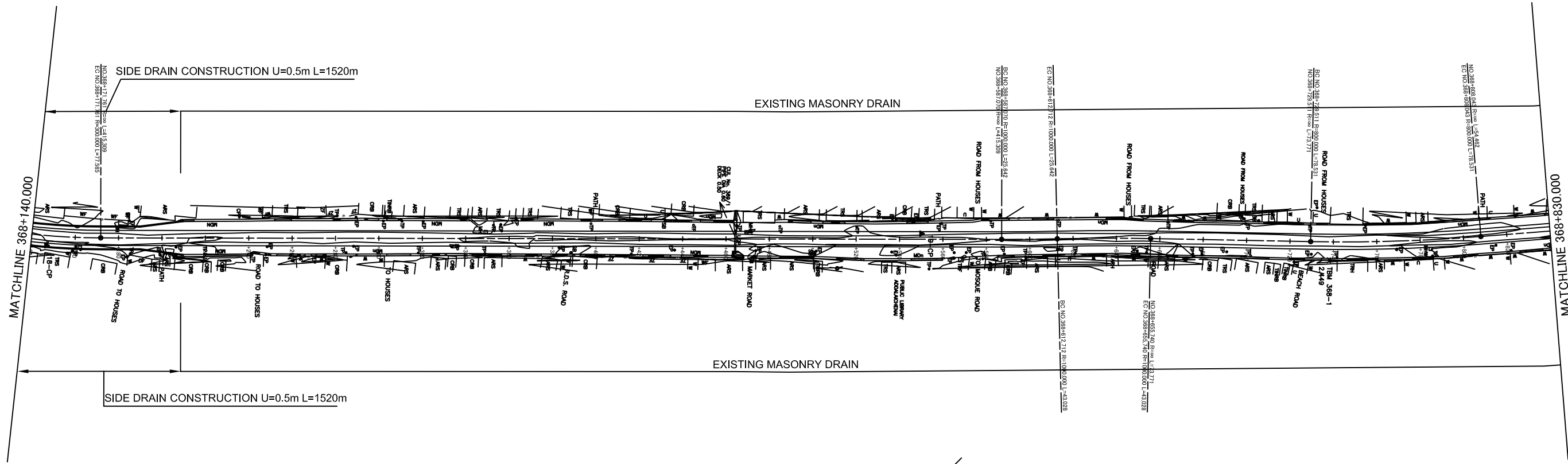
PROFILE
SCALE (H =1:2000 V = 1:400)



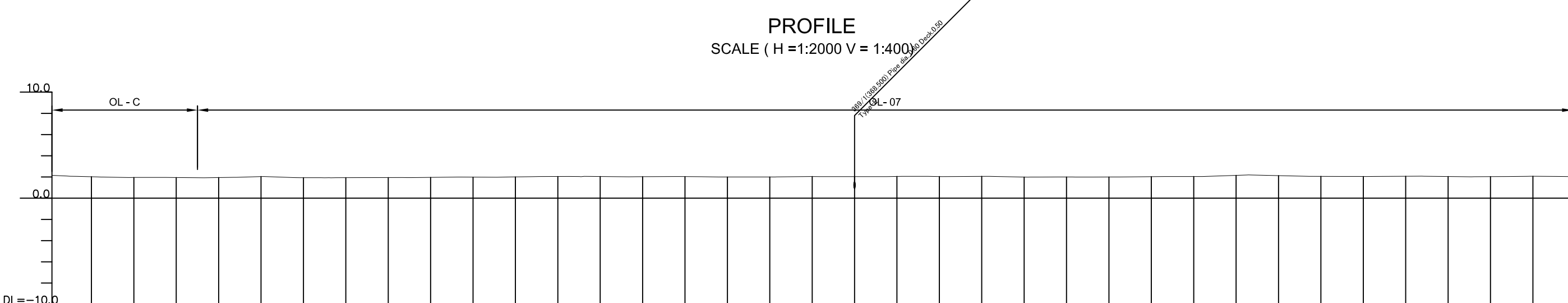
GRADE																																														
PROPOSED ROAD LEVELS	VARY																																													
EXISTING GROUND LEVELS	2.298	2.408	2.253	2.190	2.211	2.319	2.355	2.388	2.524	2.724	2.786	2.856	3.083	3.203	3.283	3.381	3.444	3.453	3.431	3.396	3.315	3.188	3.102	3.138	3.220	3.249	3.234	3.219	3.232	3.257	3.233	3.216	3.200	3.135	3.033	2.955	2.853	2.718	2.615	2.495	2.368	2.346	2.166	2.076	2.056	2.021
STATION (km)	+440.000	+460.000	+480.000	+491.208	+500.000	+520.000	+540.000	+560.000	+580.000	+600.000	+610.339	+620.000	+640.000	+660.000	+680.000	+700.000	+710.000	+720.000	+728.092	+740.000	+760.000	+780.000	+800.000	+820.000	+840.000	+860.000	+880.000	+897.118	+900.000	+920.000	+940.000	+950.000	+960.000	+980.000	NO.368	+10.000	+20.000	+40.000	+60.000	+80.000	+94.176	+100.000	+120.000	+130.000	+130.166	+140.000
CURVE BAND	R=∞ L=92.034		R=900.000 L=236.884										R=∞ L=92.998				R=500.000 L=76.028				R=∞ L=197.057				R=300.000 L=77.585																					

THE DEMOCRATIC SOCIALIST REPUBLIC OF SRI LANKA MINISTRY OF HIGHWAYS 	JAPAN INTERNATIONAL COOPERATION AGENCY ORIENTAL CONSULTANTS CO., LTD. NIPPON KOEI CO., LTD. JAPAN ENGINEERING CONSULTANTS CO., LTD.	THE PRO-POOR EASTERN INFRASTRUCTURE DEVELOPMENT PROJECT		DESIGNED BY:
		PLANE & PROFILE 367+440~368+140		CHECKED BY:
				APPROVED BY:
				DWG. NO. B-006
		No	REVISION	DATE

PLAN
SCALE (1:2000)



PROFILE
SCALE (H =1:2000 V = 1:400)



GRADE																																																					
PROPOSED ROAD LEVELS	VARY																																																				
EXISTING GROUND LEVELS	2.070	2.056	2.021	1.952	1.958	1.944	1.932	1.945	2.039	1.935	1.922	1.932	1.943	1.942	1.961	1.985	2.007	2.043	2.041	2.045	2.024	2.036	1.998	2.003	2.039	2.034	2.052	2.061	2.040	2.060	1.993	1.993	1.997	1.985	1.997	2.015	2.026	2.041	2.043	2.044	2.151	2.125	2.077	2.056	2.053	2.044	2.065	2.041	2.032	2.045	2.064	2.051	
STATION (km)	+130.000	+133.186	+140.000	+160.000	+171.761	+180.000	+190.000	+200.000	+220.000	+240.000	+250.000	+260.000	+280.000	+290.000	+300.000	+320.000	+340.000	+360.000	+370.000	+380.000	+400.000	+420.000	+440.000	+460.000	+480.000	+500.000	+520.000	+530.000	+540.000	+560.000	+580.000	+587.070	+606.660	+613.902	+620.000	+634.229	+640.000	+650.000	+655.740	+660.000	+680.000	+700.000	+710.000	+720.000	+729.511	+740.000	+760.000	+768.688	+780.000	+800.000	+808.043	+820.000	+830.000
CURVE BAND	R=300.000 L=77.585			R=∞												R=∞ L=415.309		R=1000.000 L=25.642		R=1000.000 L=43.028		R=∞ L=73.771			R=800.000 L=78.531		R=∞ L=54																										

THE DEMOCRATIC SOCIALIST REPUBLIC OF SRI LANKA
MINISTRY OF HIGHWAYS



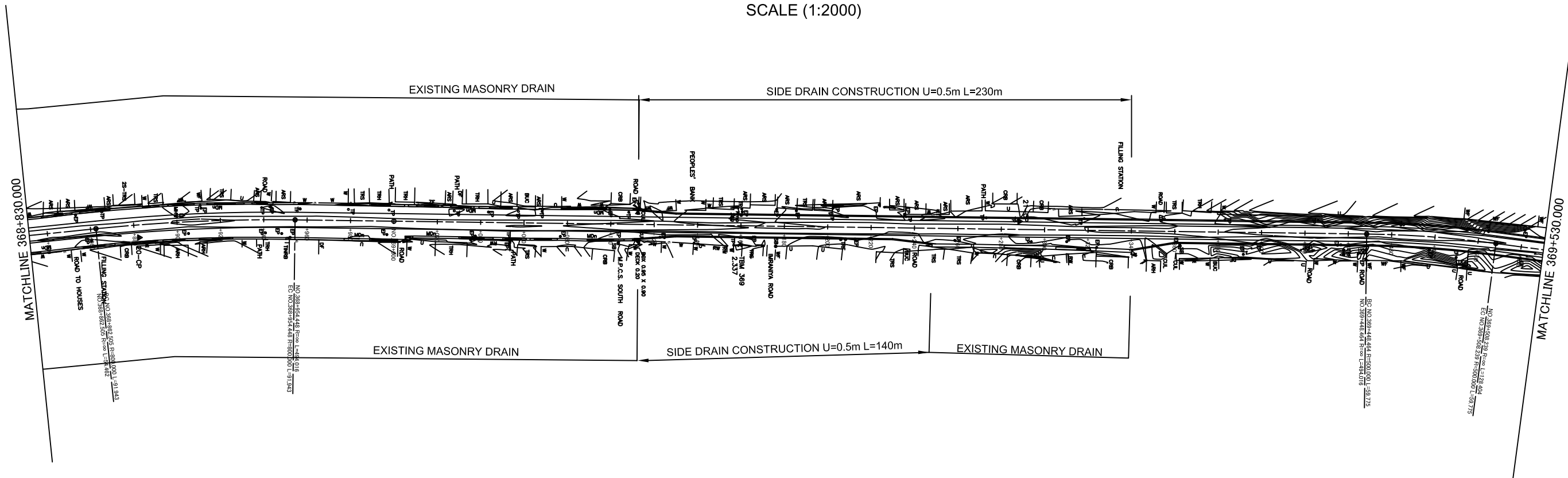
JICA JAPAN INTERNATIONAL COOPERATION AGENCY
ORIENTAL CONSULTANTS CO., LTD.
NIPPON KOEI CO., LTD.
JAPAN ENGINEERING CONSULTANTS CO., LTD.

No	REVISION	DATE

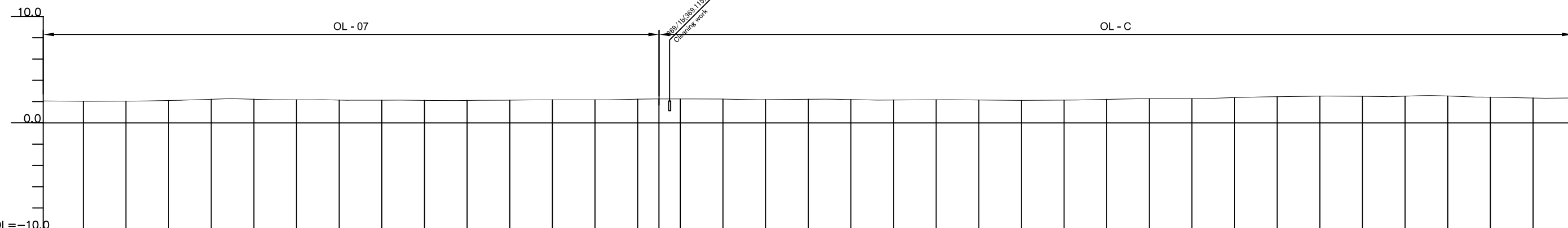
THE PRO-POOR EASTERN INFRASTRUCTURE DEVELOPMENT PROJECT
PLANE & PROFILE
 368+140~368+830

DESIGNED BY:	
CHECKED BY:	
APPROVED BY:	
DWG. NO.	B-007

PLAN
SCALE (1:2000)



PROFILE
SCALE (H=1:2000 V=1:400)



GRADE	OL - 07																				OL - C																														
PROPOSED ROAD LEVELS	VARY																																																		
EXISTING GROUND LEVELS	2.051	2.032	2.035	2.042	2.064	2.101	2.216	2.273	2.218	2.166	2.162	2.140	2.130	2.132	2.111	2.102	2.109	2.130	2.156	2.163	2.164	2.222	2.251	2.246	2.234	2.180	2.221	2.188	2.147	2.170	2.148	2.114	2.142	2.205	2.271	2.274	2.377	2.463	2.511	2.511	2.496	2.475	2.506	2.524	2.456	2.412	2.394	2.382	2.336	2.324	
STATION (km)	+830.000	+840.000	+850.000	+860.000	+870.000	+880.000	+890.000	+900.000	+910.000	+920.000	+930.000	+940.000	+954.448	+960.000	+970.000	+980.000	NO. 369	+10.000	+20.000	+40.000	+50.000	+60.000	+80.000	+100.000	+120.000	+130.000	+140.000	+160.000	+180.000	+200.000	+220.000	+240.000	+260.000	+280.000	+300.000	+320.000	+340.000	+360.000	+380.000	+400.000	+420.000	+430.000	+440.000	+448.464	+460.000	+480.000	+500.000	+505.000	+508.239	+520.000	+530.000
CURVE BAND	R=∞ L=54.462		R=800.000 L=91.943														R=∞ L=494.016										R=500.000 L=59.775																								

THE DEMOCRATIC SOCIALIST REPUBLIC OF SRI LANKA
MINISTRY OF HIGHWAYS

Road Development Authority

JICA JAPAN INTERNATIONAL COOPERATION AGENCY

ORIENTAL CONSULTANTS CO., LTD.

NIPPON KOEI CO., LTD.

JEC JAPAN ENGINEERING CONSULTANTS CO., LTD.

No	REVISION	DATE

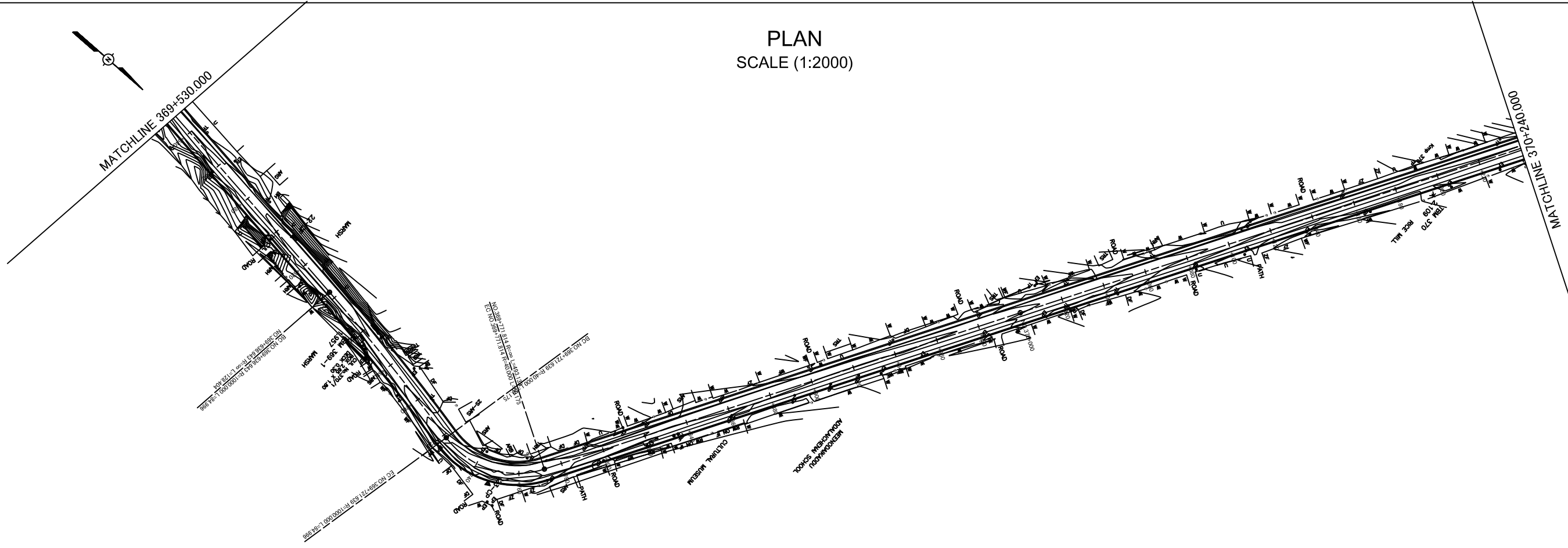
THE PRO-POOR EASTERN INFRASTRUCTURE DEVELOPMENT PROJECT

PLANE & PROFILE

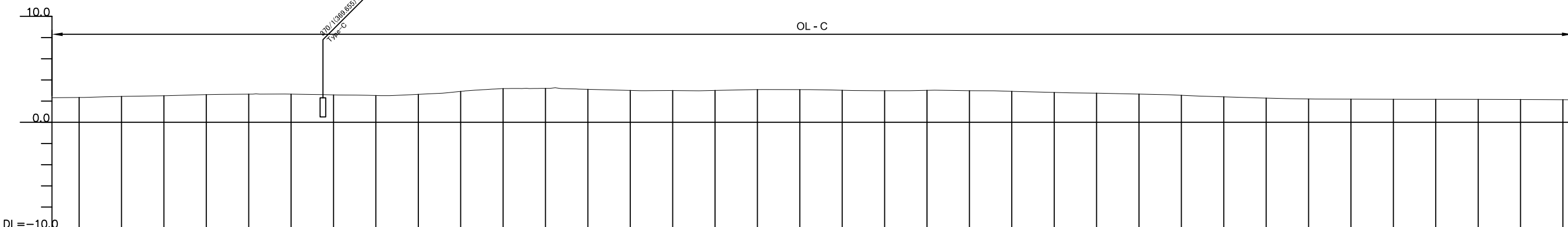
368+830~369+530

DESIGNED BY:	
CHECKED BY:	
APPROVED BY:	
DWG. NO.	B-008

PLAN
SCALE (1:2000)



PROFILE
SCALE (H =1:2000 V = 1:400)



GRADE																																																				
PROPOSED ROAD LEVELS	VARY																																																			
EXISTING GROUND LEVELS	2.324	2.342	2.416	2.436	2.508	2.558	2.608	2.658	2.667	2.656	2.628	2.583	2.526	2.637	2.730	2.813	3.176	3.289	3.199	3.161	3.107	3.003	2.984	2.996	3.003	3.086	3.082	3.065	3.025	2.991	2.981	2.981	3.014	2.980	2.919	2.813	2.749	2.707	2.663	2.548	2.465	2.403	2.283	2.201	2.187	2.181	2.171	2.168	2.162	2.151	2.145	2.131
STATION (km)	+530.000	+540.000	+555.000	+560.000	+580.000	+590.000	+600.000	+620.000	+636.643	+640.000	+650.000	+660.000	+680.000	+700.000	+710.000	+720.000	+740.000	+750.000	+760.000	+771.814	+780.000	+800.000	+810.000	+820.000	+840.000	+860.000	+880.000	+890.000	+900.000	+910.000	+920.000	+930.000	+940.000	+960.000	+980.000	NO.370	+20.000	+30.000	+40.000	+60.000	+70.000	+80.000	+100.000	+120.000	+130.000	+140.000	+160.000	+180.000	+200.000	+220.000	+230.000	+240.000
CURVE BAND	$R=∞$ $L=128.404$				$R=1000.000$ $L=84.996$				$R=40.000$ $L=50.175$				$R=∞$ $L=493.133$																																							

THE DEMOCRATIC SOCIALIST REPUBLIC OF SRI LANKA MINISTRY OF HIGHWAYS 	JAPAN INTERNATIONAL COOPERATION AGENCY ORIENTAL CONSULTANTS CO., LTD. NIPPON KOEI CO., LTD. JAPAN ENGINEERING CONSULTANTS CO., LTD.	THE PRO-POOR EASTERN INFRASTRUCTURE DEVELOPMENT PROJECT		DESIGNED BY:
		PLANE & PROFILE 369+530~370+240		CHECKED BY:
				APPROVED BY:
				DWG. NO. B-009
No	REVISION	DATE		