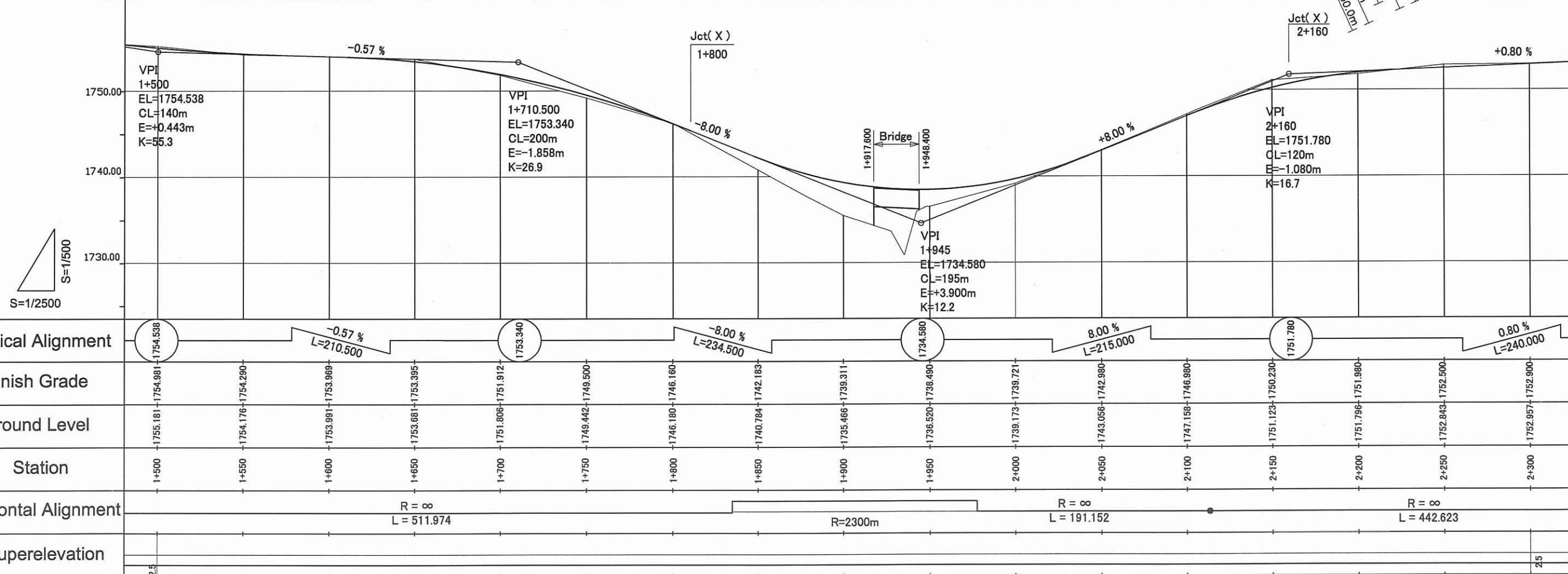
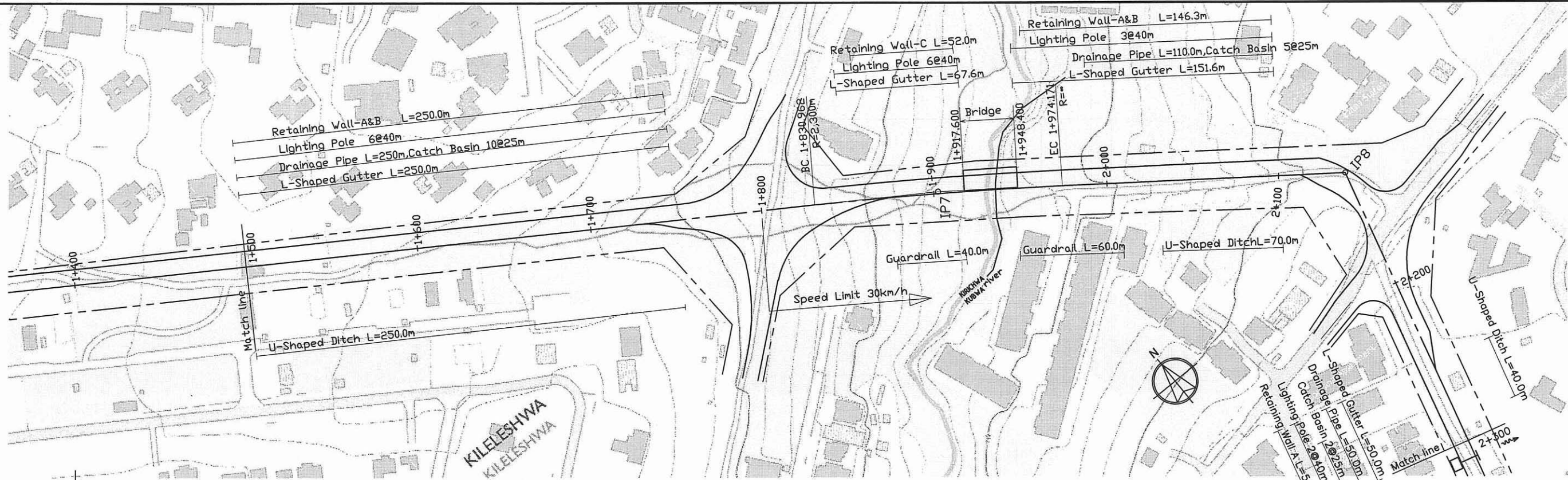
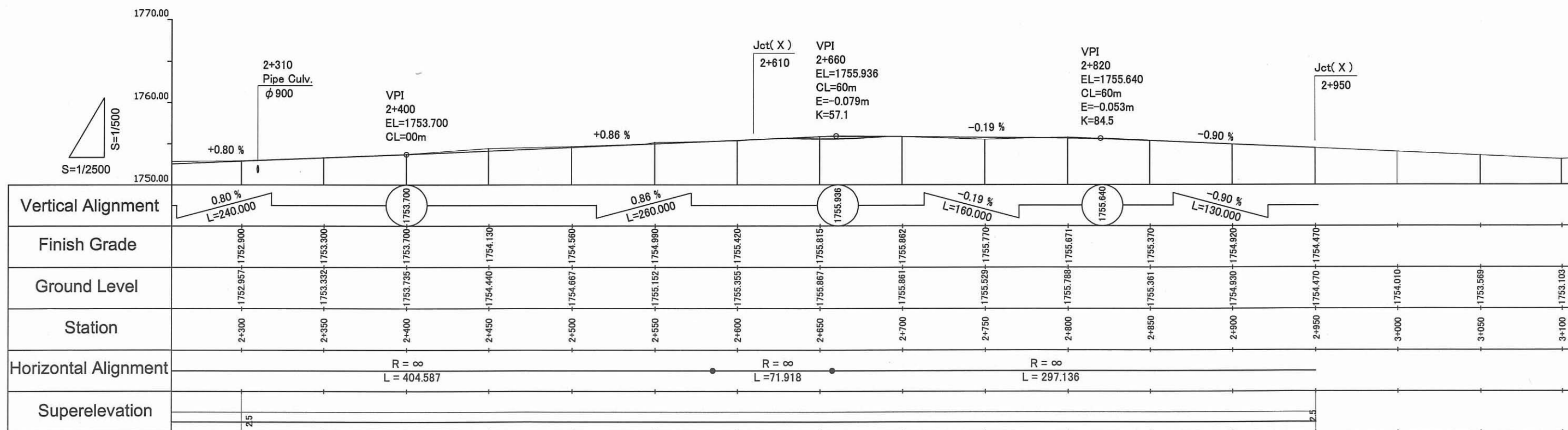
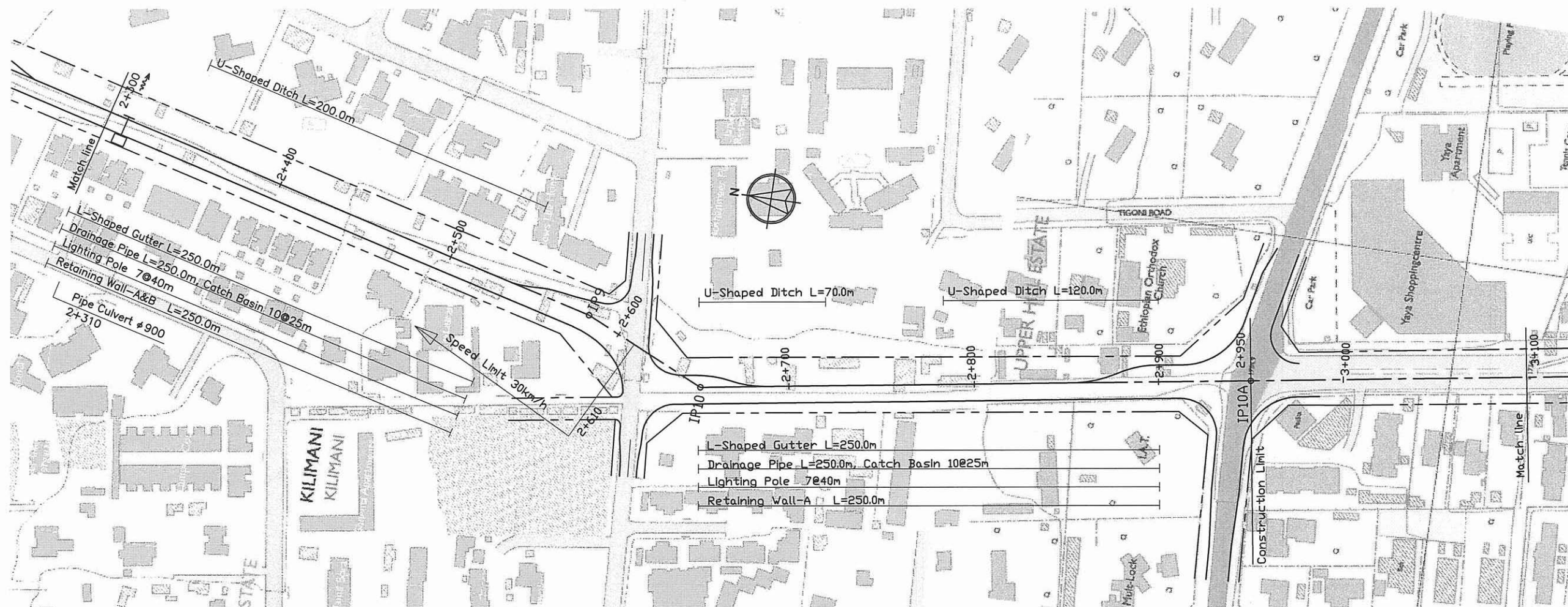


Vertical Alignment																
Finish Grade	1757.463	1756.178	1754.508	1751.058	1748.104	1746.526	1746.326	1747.502	1750.056	1753.848	1757.581	1759.447	1758.177	1756.124	1754.981	
Ground Level	1757.463	1756.178	1754.857	1751.933	1748.200	1742.673	1741.458	1744.359	1750.174	1754.936	1758.150	1758.867	1758.778	1756.838	1755.181	
Station	0+750	0+800	0+850	0+900	0+950	1+000	1+050	1+100	1+150	1+200	1+250	1+300	1+350	1+400	1+450	1+500
Horizontal Alignment	R=1500m			R=∞ L=68.719		A=70		A=70		R=∞ L=271.256			R=∞ L=551.974			
Superelevation	2.5		2.5		4.0		4.0		2.5		2.5		2.5			



Vertical Alignment	-0.57% L=210.500		-8.00% L=234.500		+8.00% L=215.000		+0.80% L=240.000										
Finish Grade	1754.981	1754.290	1753.969	1753.395	1751.912	1746.160	1742.183	1739.311	1738.490	1739.721	1742.980	1746.980	1750.230	1751.980	1752.500	1752.900	
Ground Level	1755.181	1754.176	1753.991	1753.681	1751.806	1749.442	1746.180	1740.784	1735.466	1736.520	1739.173	1743.056	1747.158	1751.123	1751.843	1752.957	
Station	1+500	1+550	1+600	1+650	1+700	1+750	1+800	1+850	1+900	1+950	2+000	2+050	2+100	2+150	2+200	2+250	2+300
Horizontal Alignment	R = ∞ L = 511.974				R = 2300m				R = ∞ L = 191.152				R = ∞ L = 442.623				
Superelevation	2.5																



MINISTRY OF ROADS AND PUBLIC WORKS
MINISTRY OF LOCAL GOVERNMENT
CITY COUNCIL OF NAIROBI
THE REPUBLIC OF KENYA

JAPAN INTERNATIONAL COOPERATION AGENCY
KATAHIRA & ENGINEERS INTERNATIONAL
RECS INTERNATIONAL INC.

THE STUDY ON MASTER PLAN
FOR URBAN TRANSPORT IN
THE NAIROBI METROPOLITAN AREA

ML7 Plan & Profile 3
sta.2+300 to sta.3+100

Drawing No.	ML7 - 3
SCALE	1 : 2500
DATE	Jul. 2005