

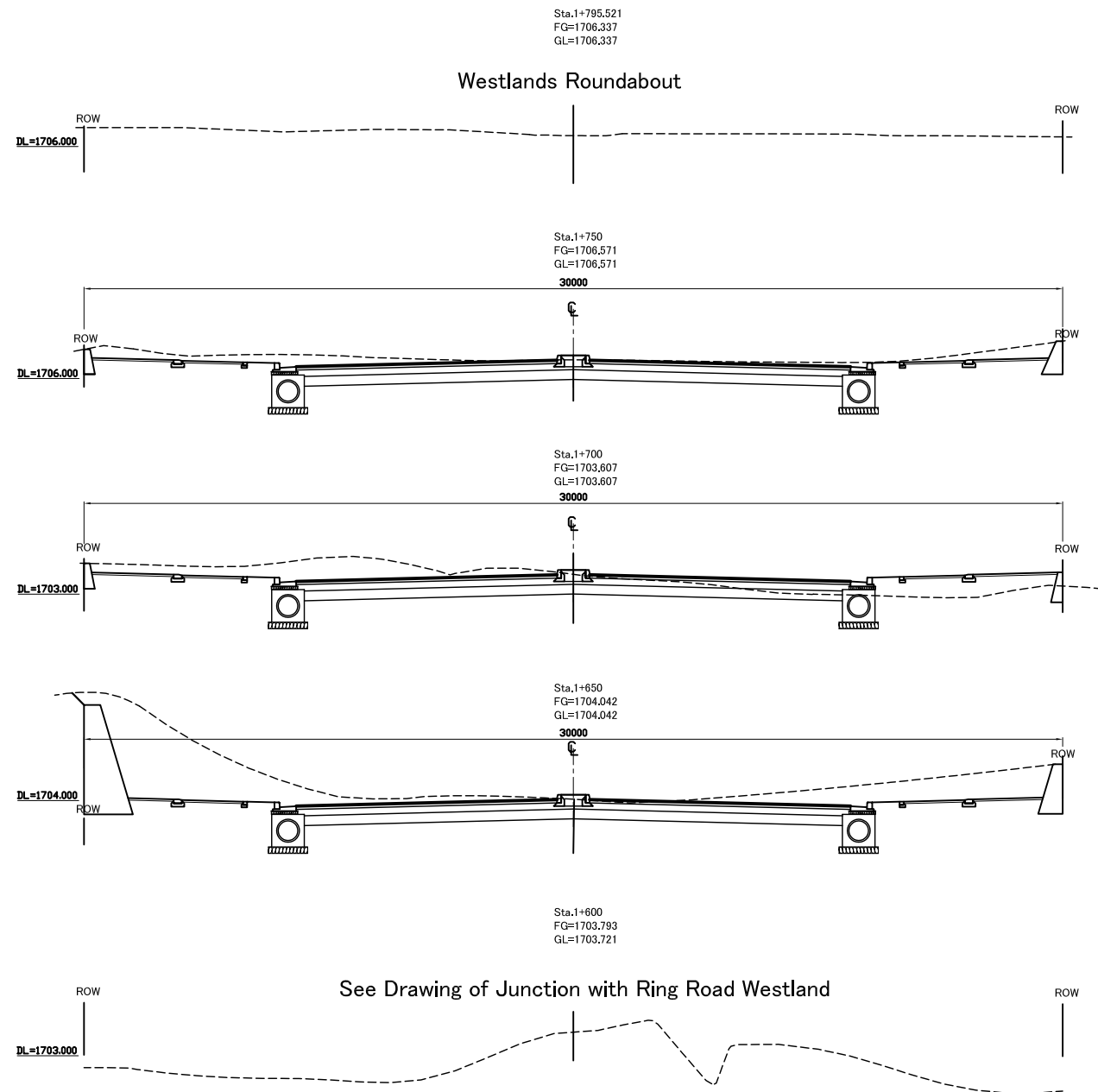
MINISTRY OF ROADS AND PUBLIC WORKS  
MINISTRY OF LOCAL GOVERNMENT  
CITY COUNCIL OF NAIROBI  
THE REPUBLIC OF KENYA

JAPAN INTERNATIONAL COOPERATION AGENCY  
KATAHIRA & ENGINEERS INTERNATIONAL  
RECS INTERNATIONAL INC.

THE STUDY ON MASTER PLAN  
FOR URBAN TRANSPORT IN  
THE NAIROBI METROPOLITAN AREA

ML 3 Cross Section 1  
Sta.0+950 to Sta.1+550

Drawing No.	ML3 - 3
SCALE	1 : 200
DATE	Jul. 2005



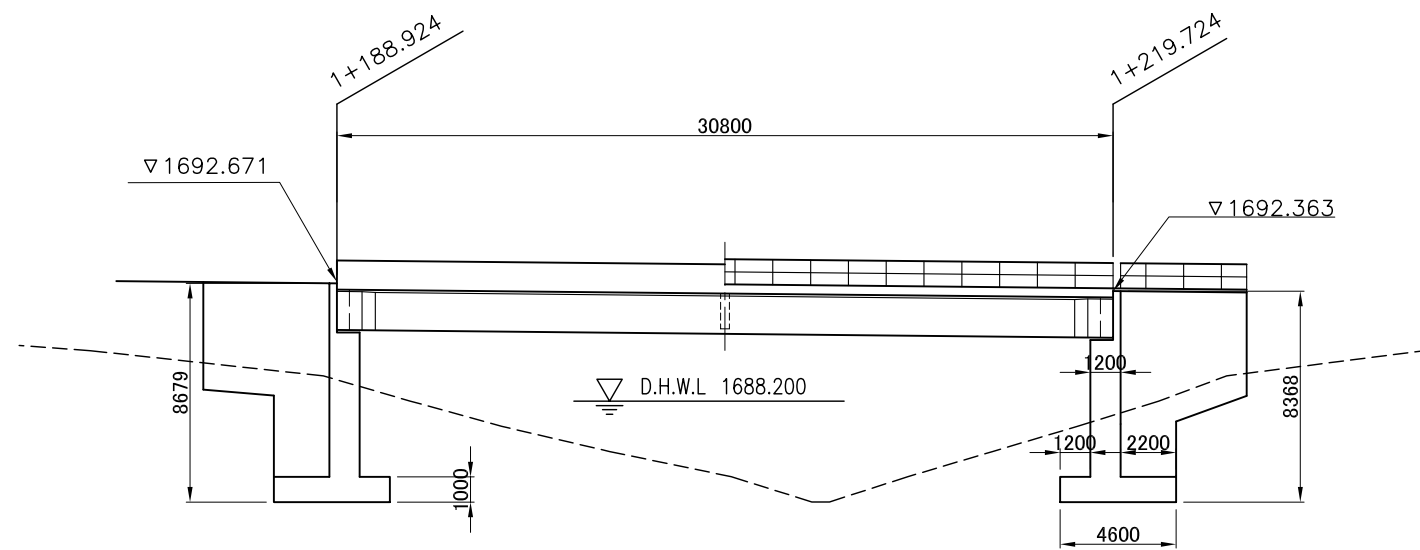
MINISTRY OF ROADS AND PUBLIC WORKS  
 MINISTRY OF LOCAL GOVERNMENT  
 CITY COUNCIL OF NAIROBI  
 THE REPUBLIC OF KENYA

JAPAN INTERNATIONAL COOPERATION AGENCY  
 KATAHIRA & ENGINEERS INTERNATIONAL  
 RECS INTERNATIONAL INC.

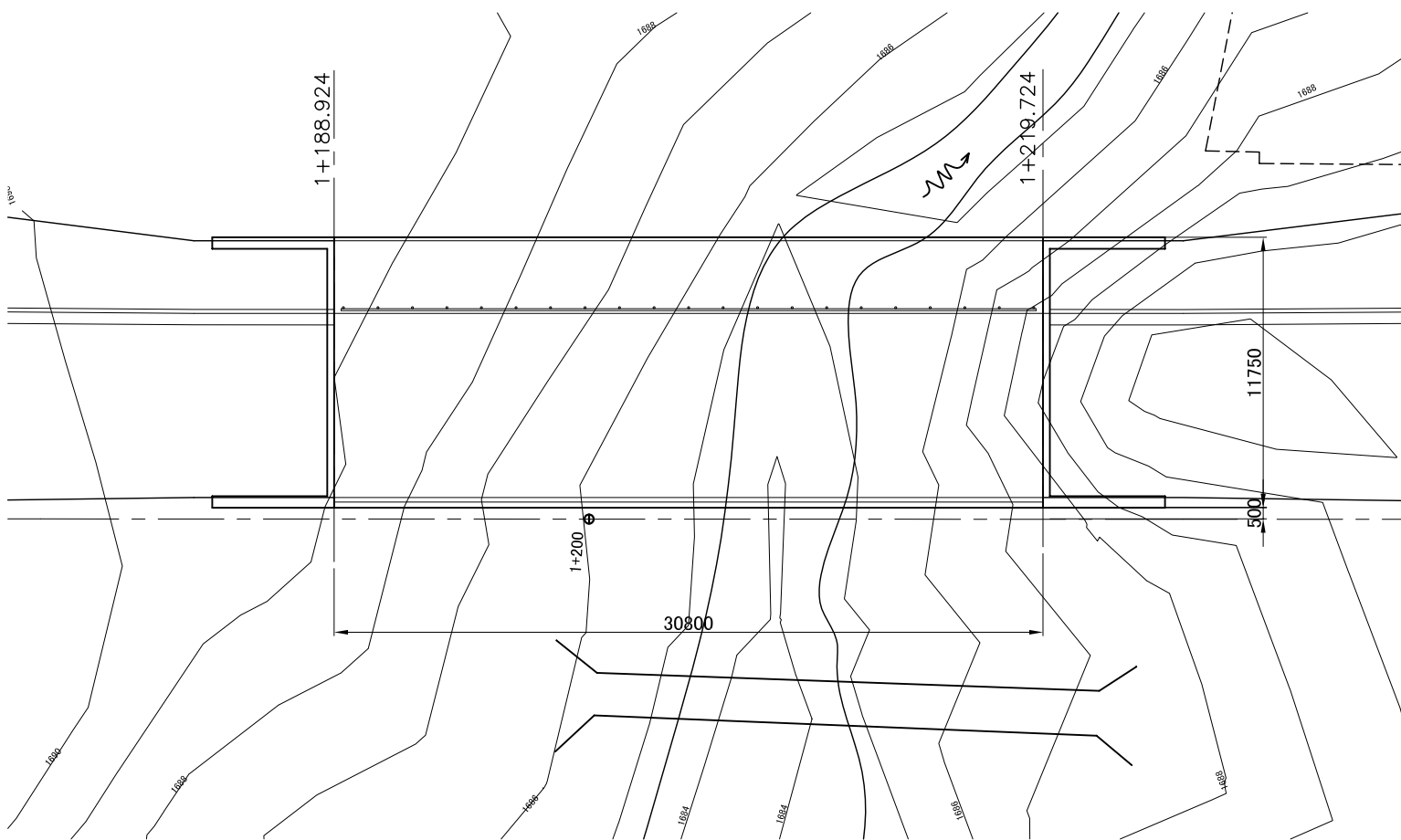
THE STUDY ON MASTER PLAN  
 FOR URBAN TRANSPORT IN  
 THE NAIROBI METROPOLITAN AREA

ML 3 Cross Section 2  
 Sta.1+600 to Sta.1+795.521

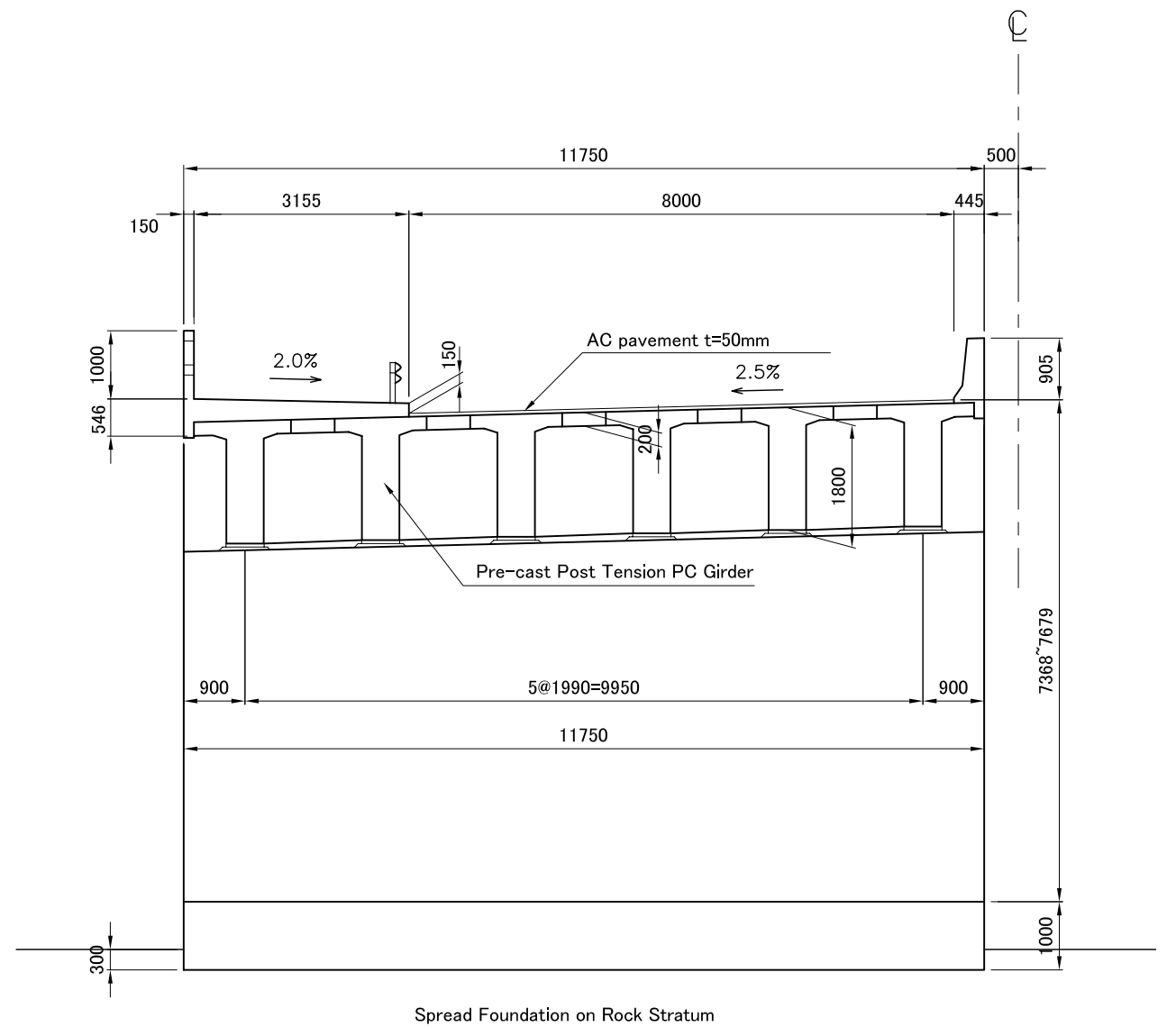
Drawing No.	ML3 - 4
SCALE	1 : 200
DATE	Jul. 2005



Side View S=1/300



Plan S=1/300



Section S=1/100

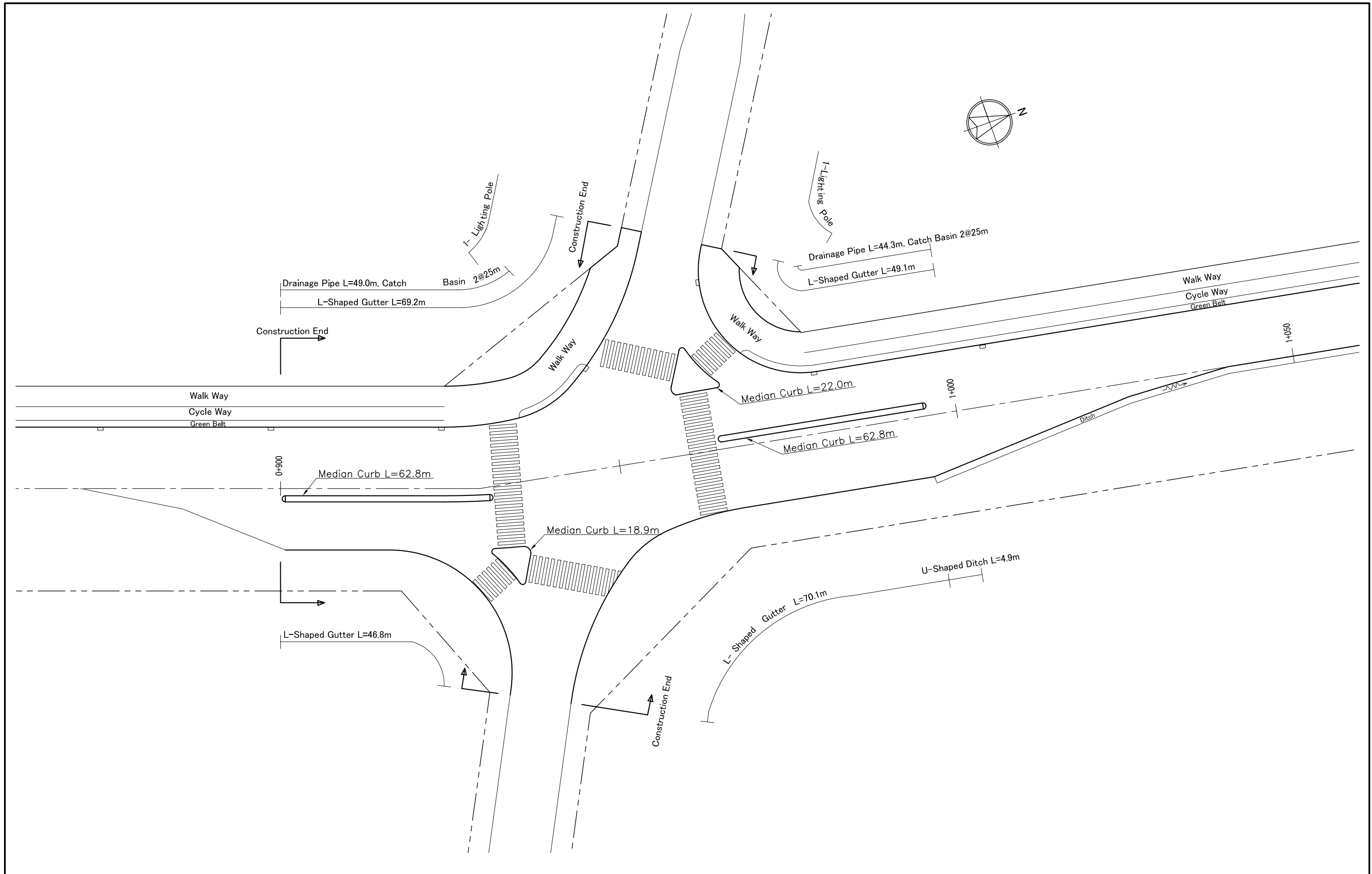
MINISTRY OF ROADS AND PUBLIC WORKS  
MINISTRY OF LOCAL GOVERNMENT  
CITY COUNCIL OF NAIROBI  
THE REPUBLIC OF KENYA

JAPAN INTERNATIONAL COOPERATION AGENCY  
KATAHIRA & ENGINEERS INTERNATIONAL  
RECS INTERNATIONAL INC.

THE STUDY ON MASTER PLAN  
FOR URBAN TRANSPORT IN  
THE NAIROBI METROPOLITAN AREA

ML3 Nairobi River Bridge  
General Plan

Drawing No.	ML3 - 5
SCALE	As shown
DATE	Jul. 2005



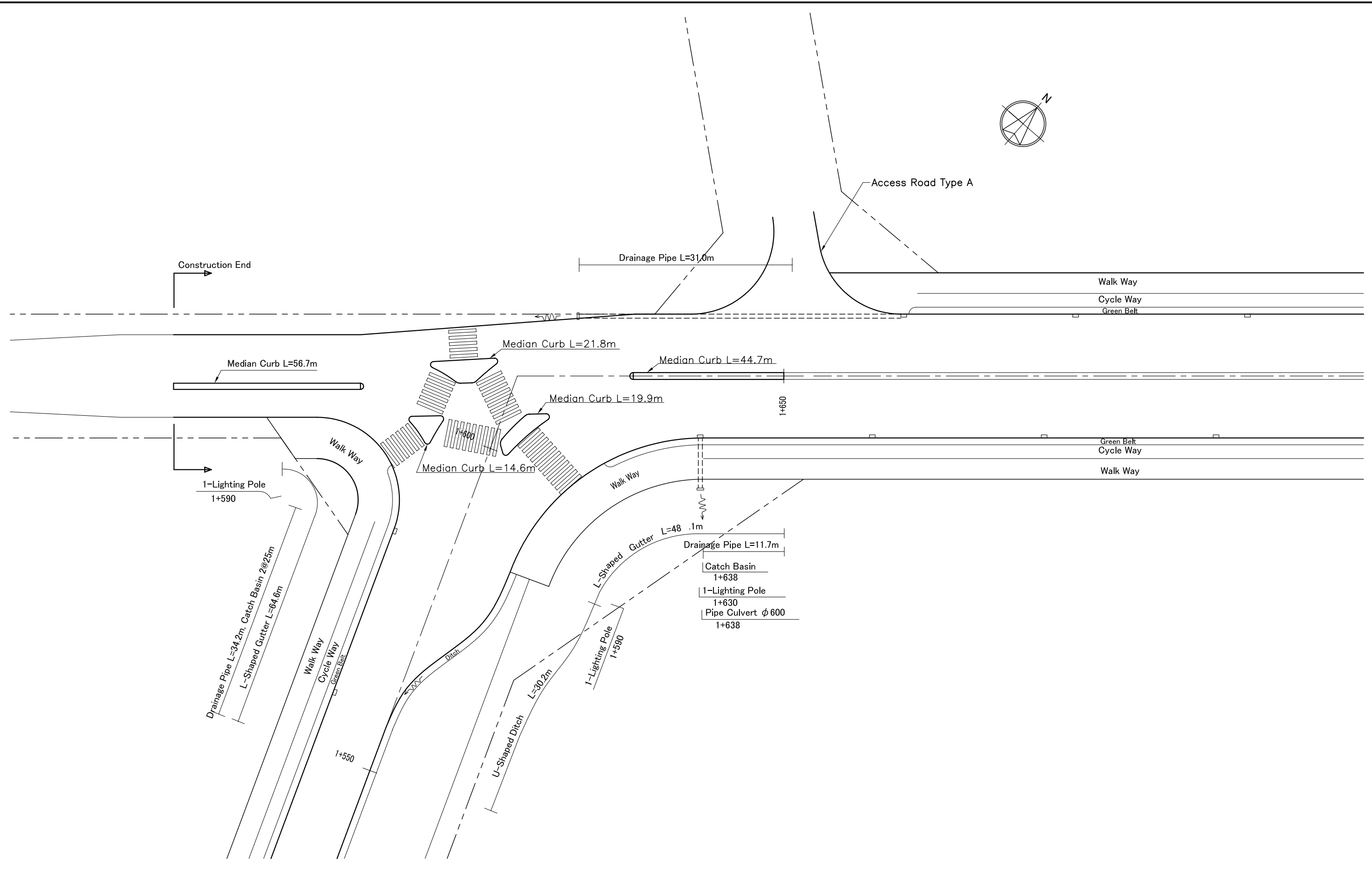
MINISTRY OF ROADS AND PUBLIC WORKS  
 MINISTRY OF LOCAL GOVERNMENT  
 CITY COUNCIL OF NAIROBI  
 THE REPUBLIC OF KENYA

JAPAN INTERNATIONAL COOPERATION AGENCY  
 KATAHIRA & ENGINEERS INTERNATIONAL  
 RECS INTERNATIONAL INC.

THE STUDY ON MASTER PLAN  
 FOR URBAN TRANSPORT IN  
 THE NAIROBI METROPOLITAN AREA

ML3 0+950  
 Junction With Riverside Drive

Drawing No.	ML3 - 6
SCALE	1 : 500
DATE	Jul. 2005



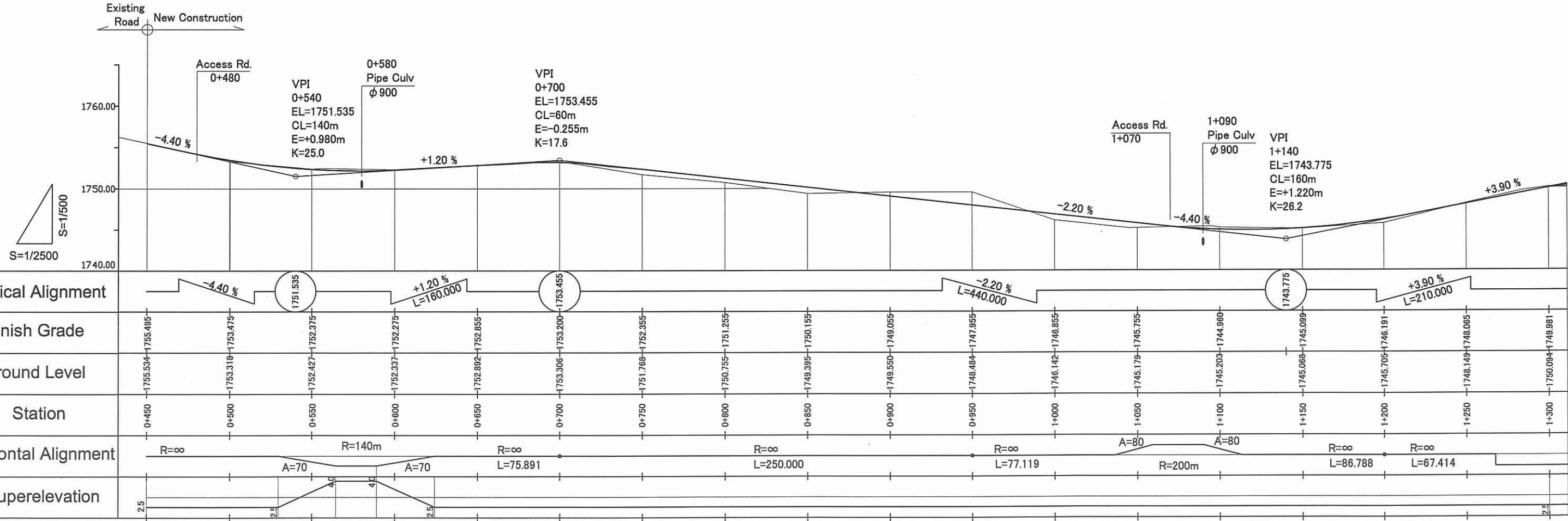
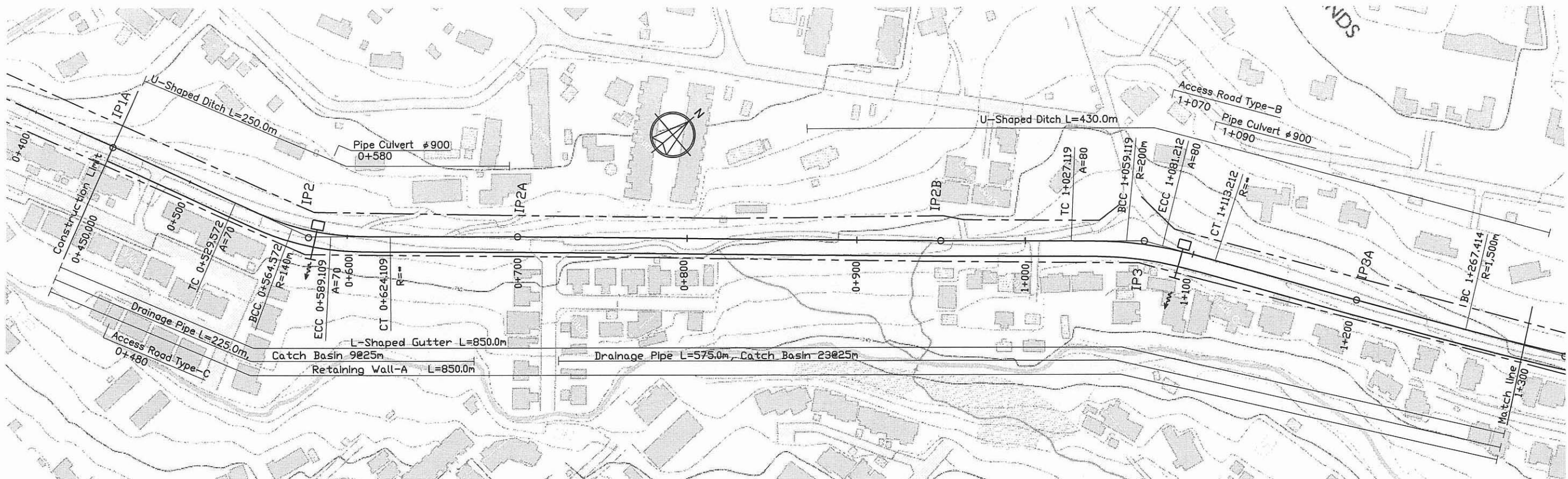
MINISTRY OF ROADS AND PUBLIC WORKS  
 MINISTRY OF LOCAL GOVERNMENT  
 CITY COUNCIL OF NAIROBI  
 THE REPUBLIC OF KENYA

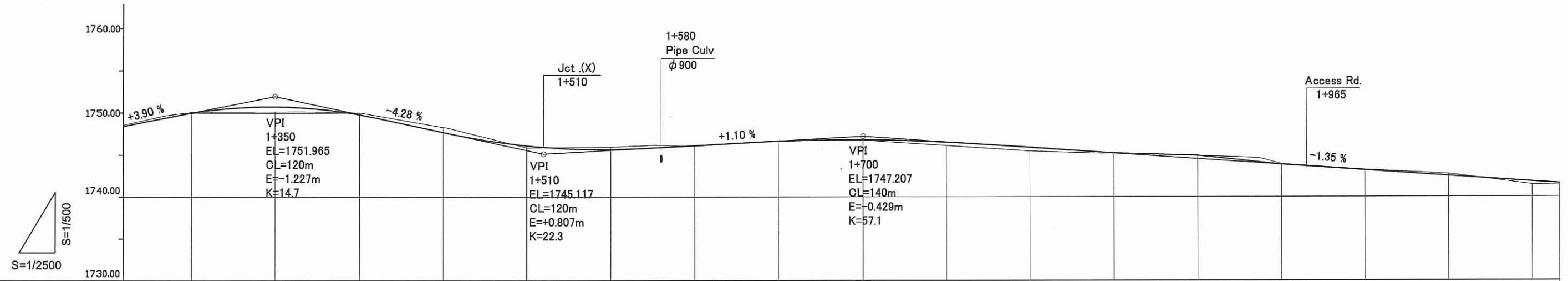
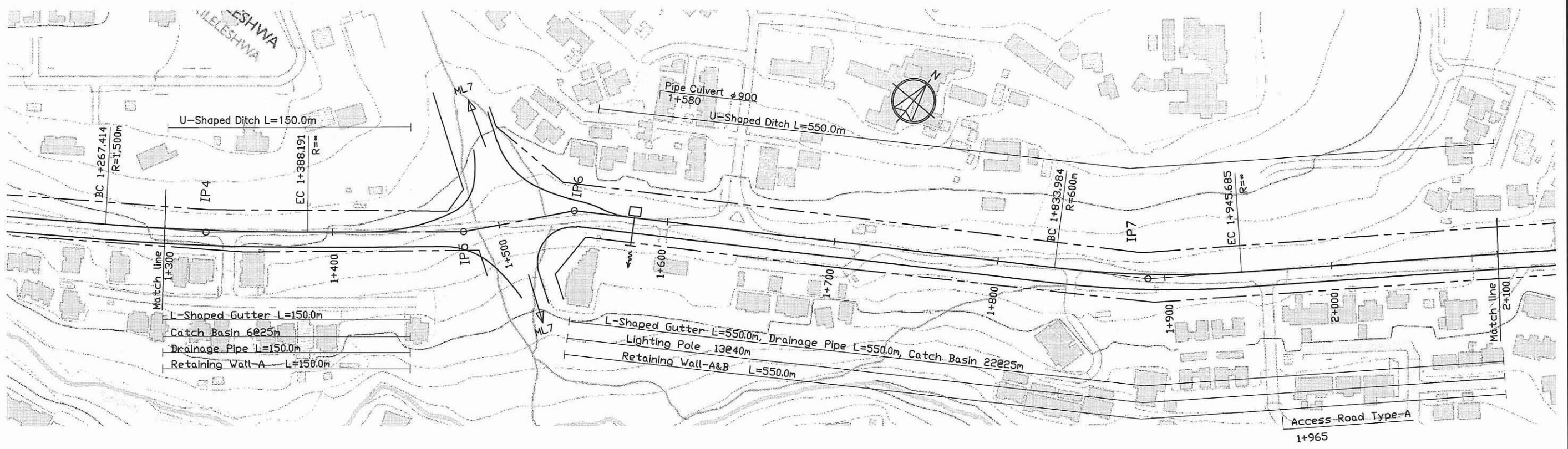
JAPAN INTERNATIONAL COOPERATION AGENCY  
 KATAHIRA & ENGINEERS INTERNATIONAL  
 RECS INTERNATIONAL INC.

THE STUDY ON MASTER PLAN  
 FOR URBAN TRANSPORT IN  
 THE NAIROBI METROPOLITAN AREA

ML3 1+611  
 Junction With Ring Road Westland

Drawing No.	ML3 - 7
SCALE	1 : 500
DATE	Jul. 2005





Vertical Alignment																	
Finish Grade	1+300	1+350	1+400	1+450	1+500	1+550	1+600	1+650	1+700	1+750	1+800	1+850	1+900	1+950	2+000	2+050	2+100
Ground Level	1750.094	1750.134	1750.035	1748.283	1745.871	1745.928	1746.035	1746.715	1746.735	1746.091	1745.435	1745.181	1744.887	1744.141	1743.225	1742.719	1741.453
Station	1+300	1+350	1+400	1+450	1+500	1+550	1+600	1+650	1+700	1+750	1+800	1+850	1+900	1+950	2+000	2+050	2+100
Horizontal Alignment	R=1,500m			R=∞ L=90.388		R=∞ L=66.466		R=∞ L=288.938			R=600m			R=∞ L=504.315			
Superelevation	<div style="display: flex; justify-content: space-between;"> <span>2.5</span> <span>2.5</span> </div>																

MINISTRY OF ROADS AND PUBLIC WORKS  
 MINISTRY OF LOCAL GOVERNMENT  
 CITY COUNCIL OF NAIROBI  
 THE REPUBLIC OF KENYA

JAPAN INTERNATIONAL COOPERATION AGENCY  
 KATAHIRA & ENGINEERS INTERNATIONAL  
 RECS INTERNATIONAL INC.

THE STUDY ON MASTER PLAN  
 FOR URBAN TRANSPORT IN  
 THE NAIROBI METROPOLITAN AREA

ML6 Plan & Profile 2  
 sta.1+300 to sta.2+100

Drawing No.	ML6 - 2
SCALE	1 : 2500
DATE	Jul. 2005