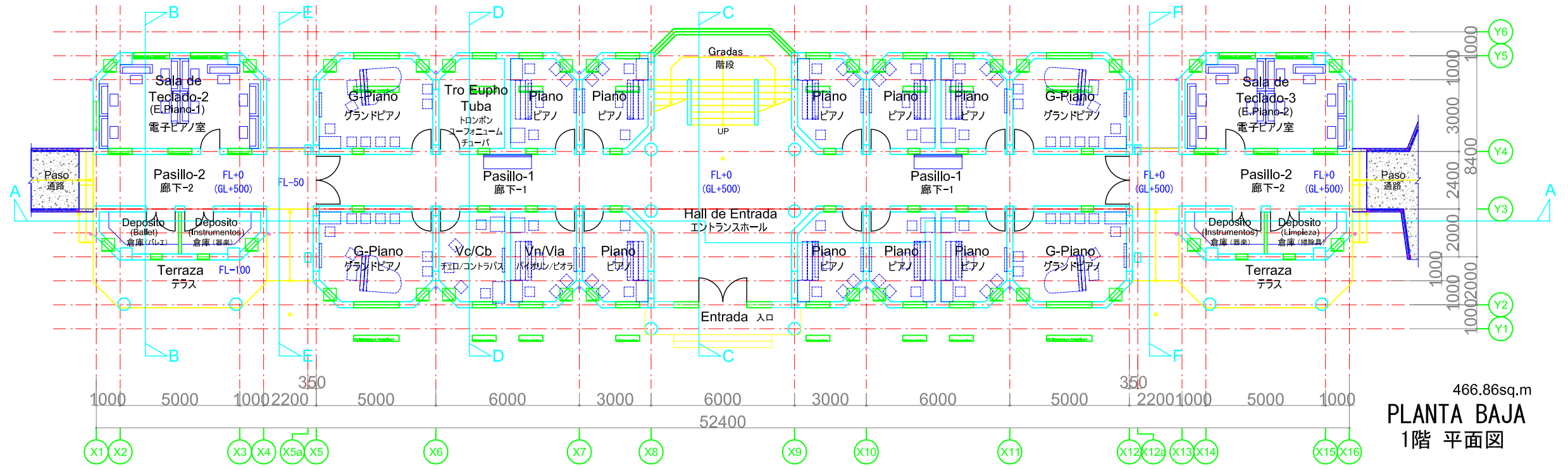
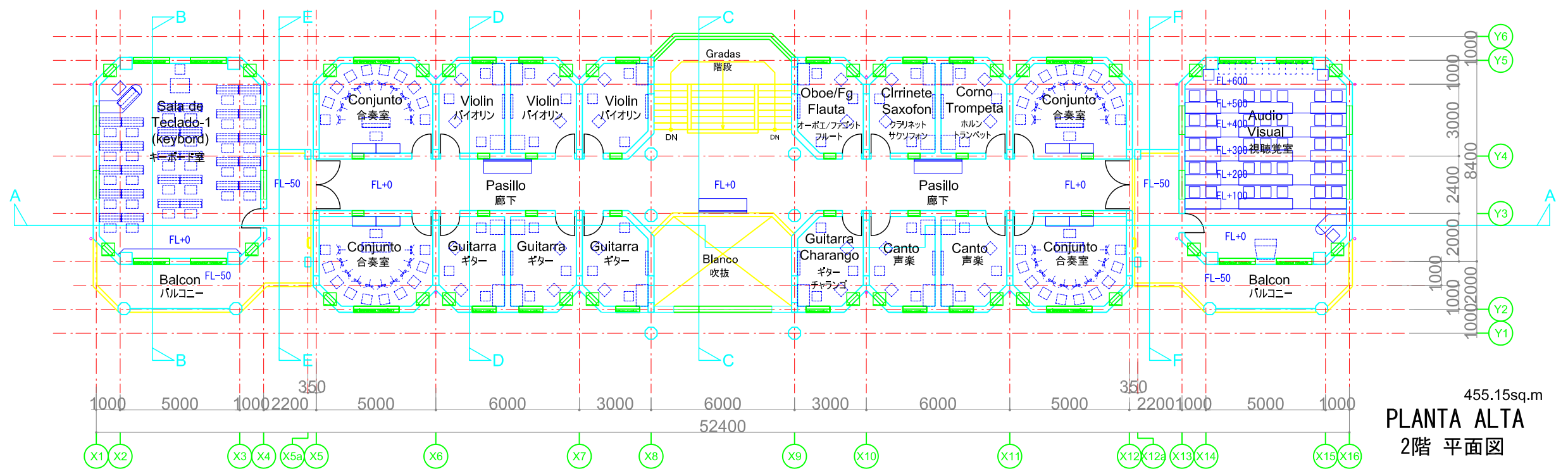


Bloque Instrumental
 器楽練習棟

TOTAL:922.01sq.m



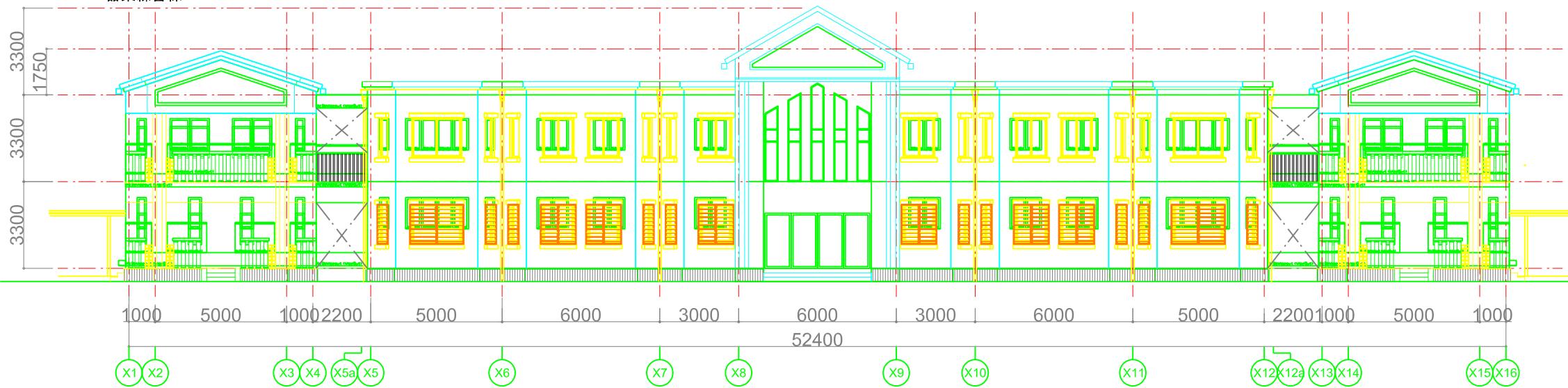
466.86sq.m
PLANTA BAJA
 1階 平面図



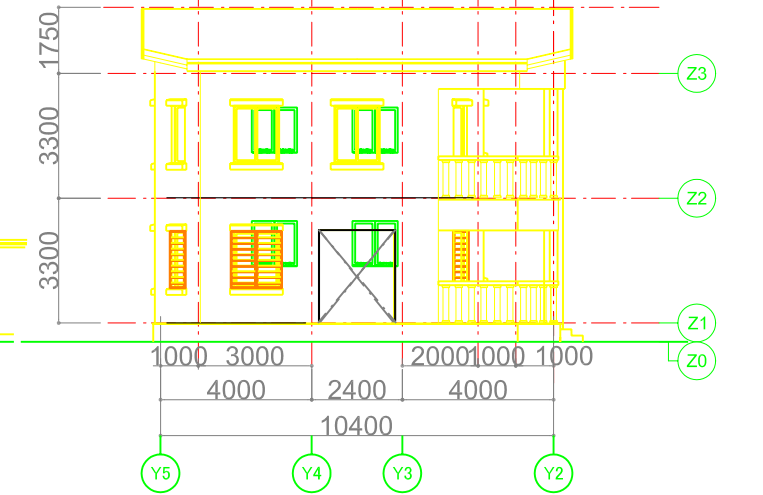
455.15sq.m
PLANTA ALTA
 2階 平面図

Bloque Instrumental

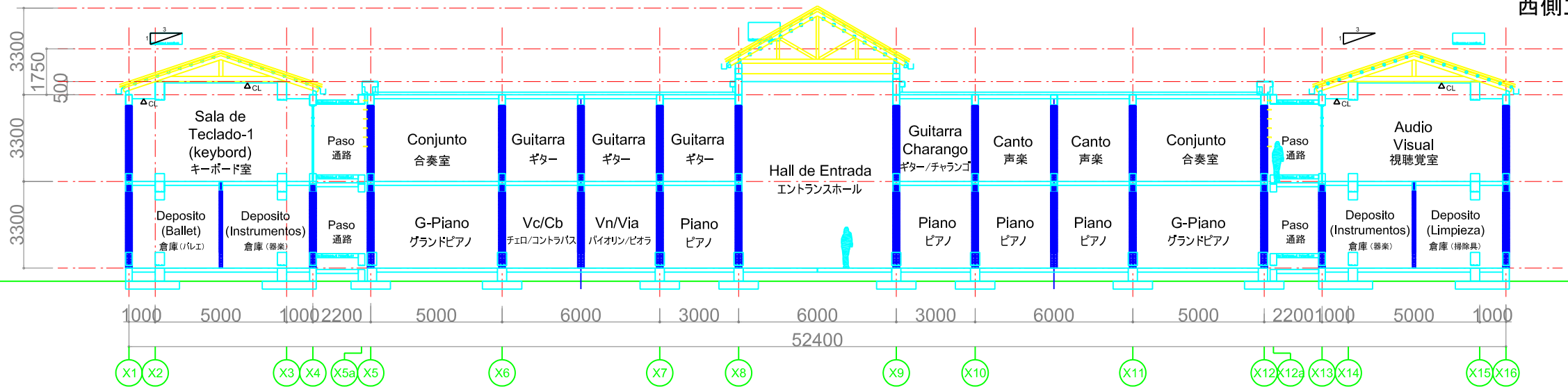
器楽練習棟



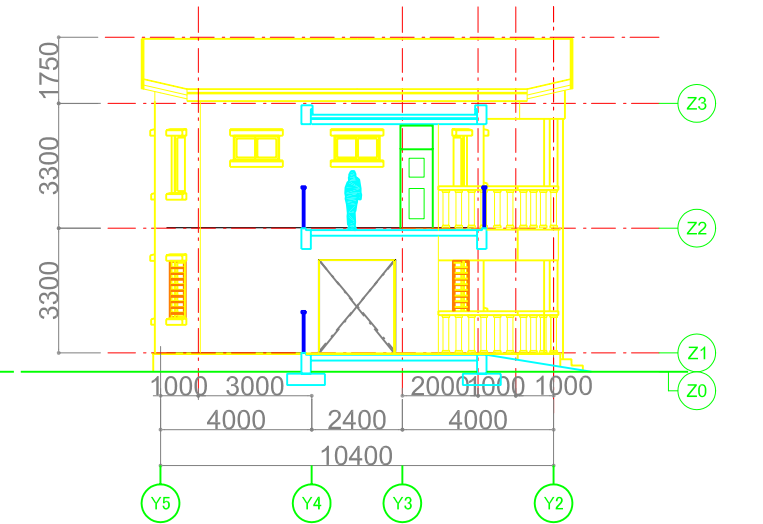
ELEVACION DE LADO OESTE
西側立面図



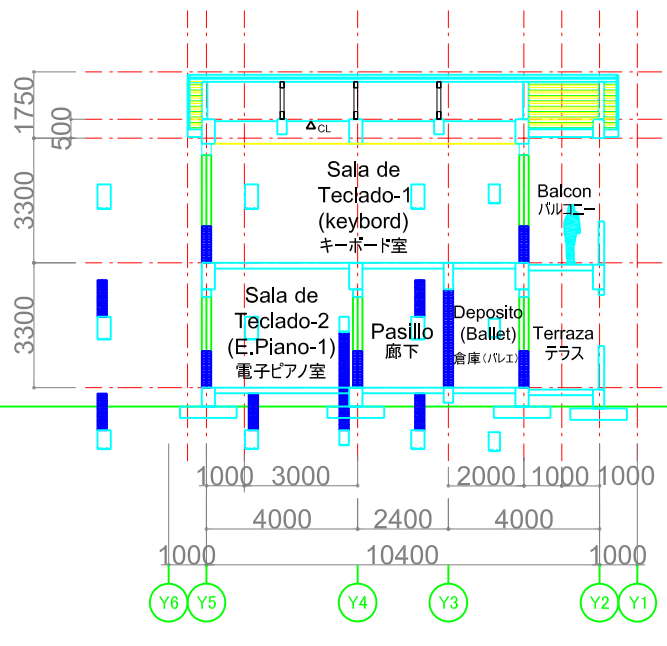
ELEVACION DE LADO NORTE
北側立面図



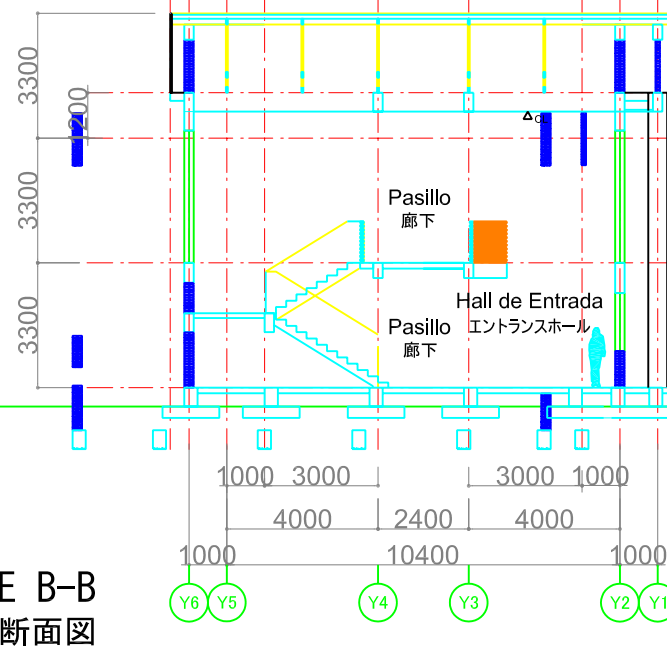
CORTE A-A
A-A 断面図



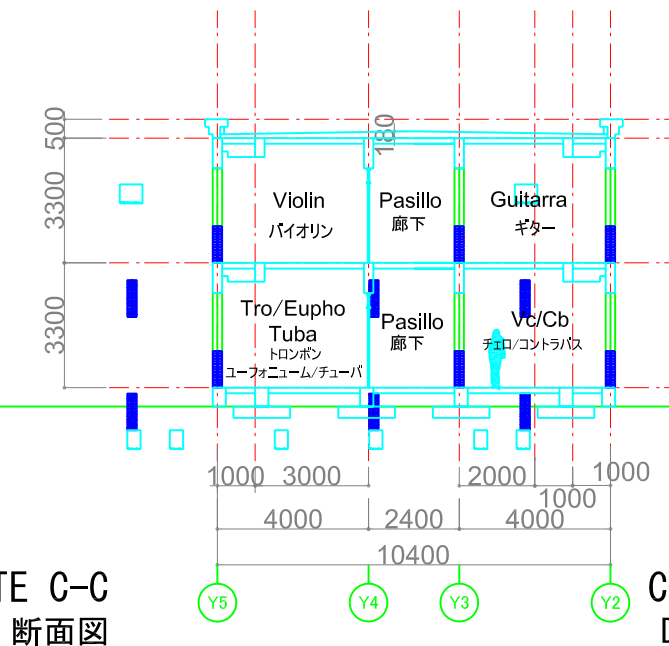
CORTE F-F
F-F 断面図



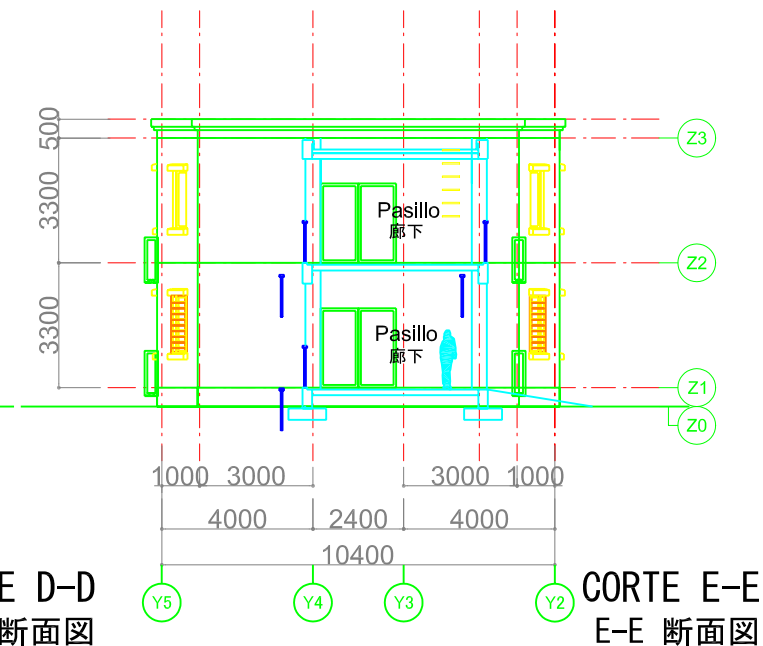
CORTE B-B
B-B 断面図



CORTE C-C
C-C 断面図



CORTE D-D
D-D 断面図



CORTE E-E
E-E 断面図