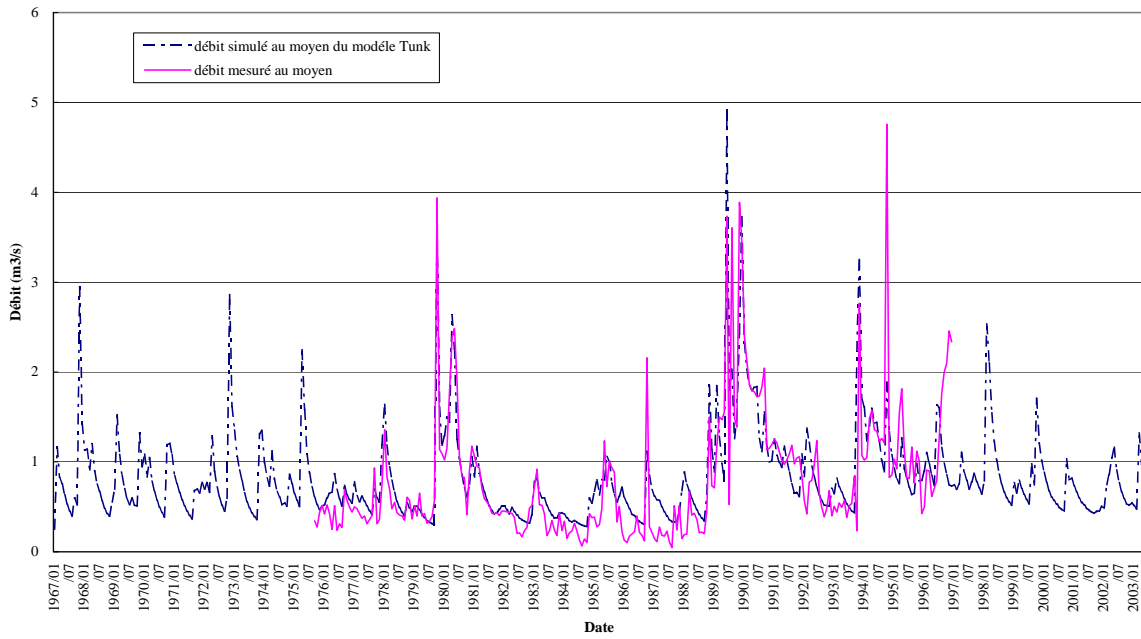
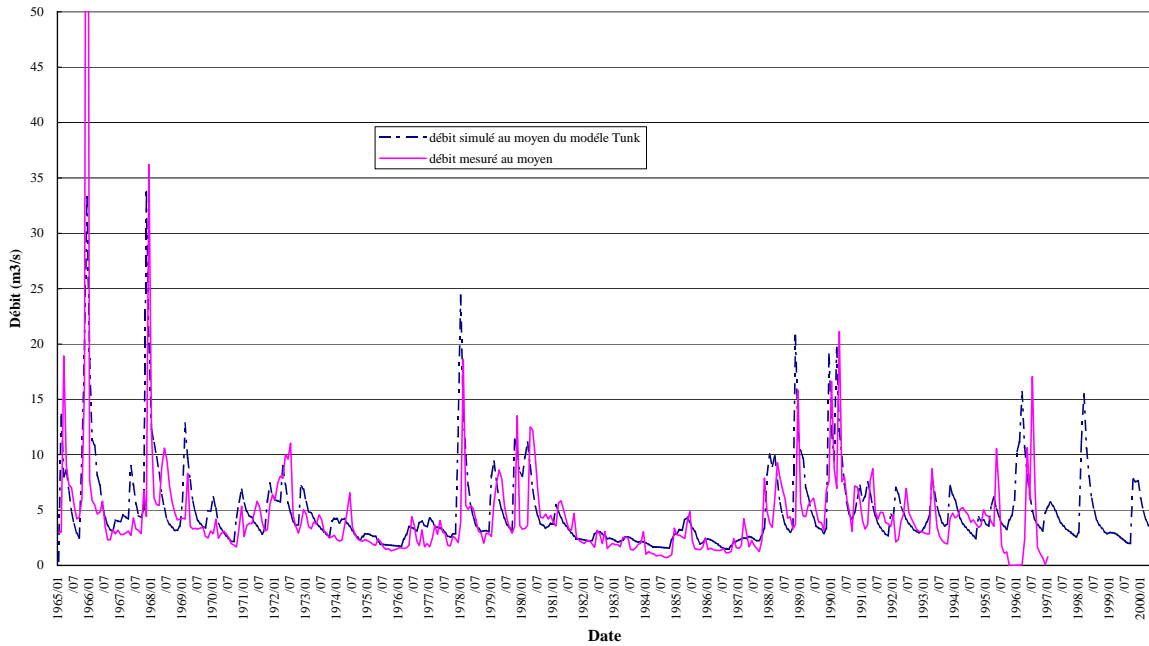


Mesures Mensuelles du débit au moyen du modèle Tunk à la Station hydrométrique Ait Bouijane



Mesures Mensuelles du débit au moyen du modèle Tunk à la Station hydrométrique Ifre



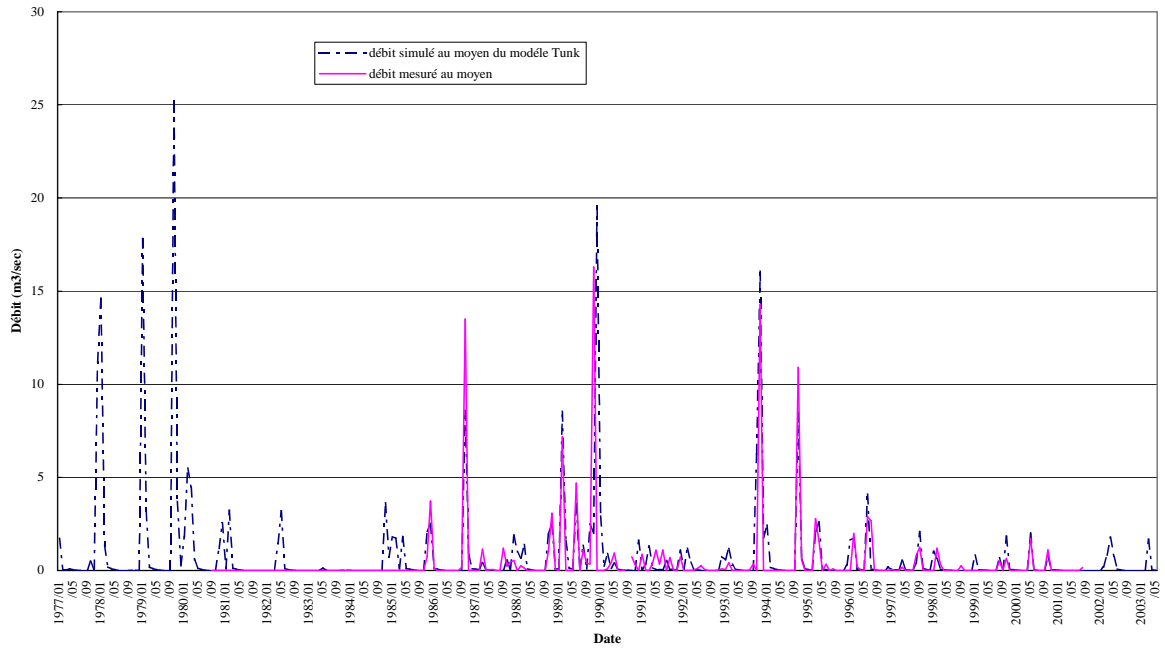
The Development Study on Rural Community Development Project  
in Semi-Arid Atlas Regions with Khattara Rehabilitation  
in the Kingdom of Morocco

Japan International Cooperation Agency

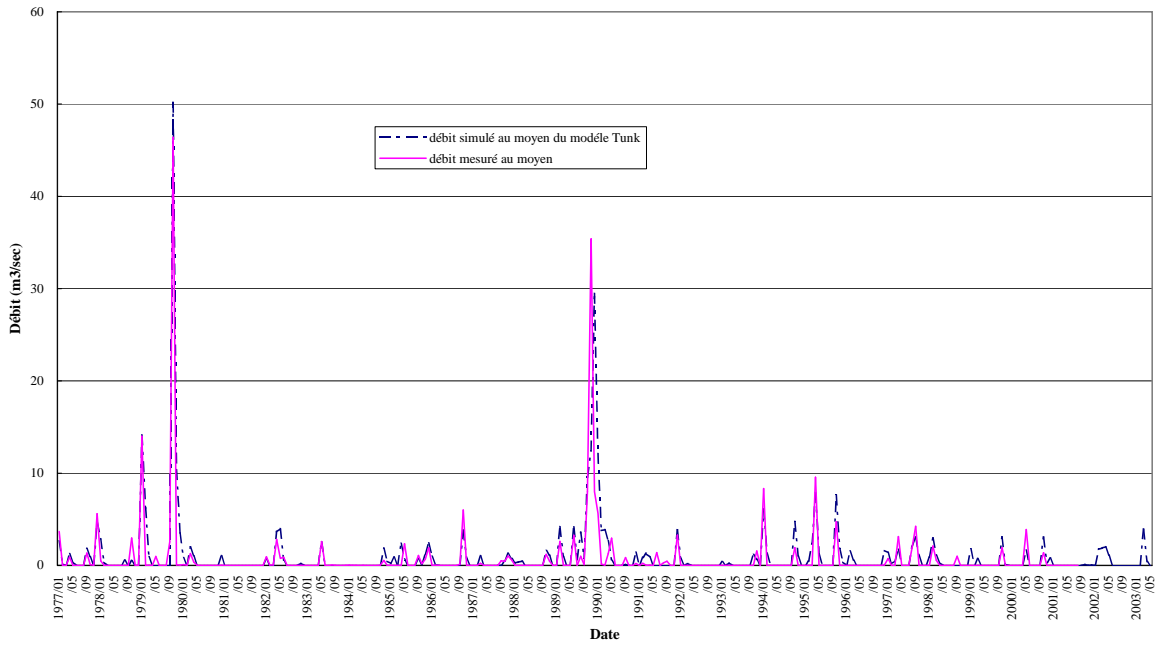
Figure A.5.1 (1)

Result of Tank Model Analyses 1

Mesures Mensuelles du débit au moyen du modèle Tunk à la Station hydrométrique Merroutcha



Mesures Mensuelles du débit au moyen du modèle Tunk à la Station hydrométrique L'Hmida



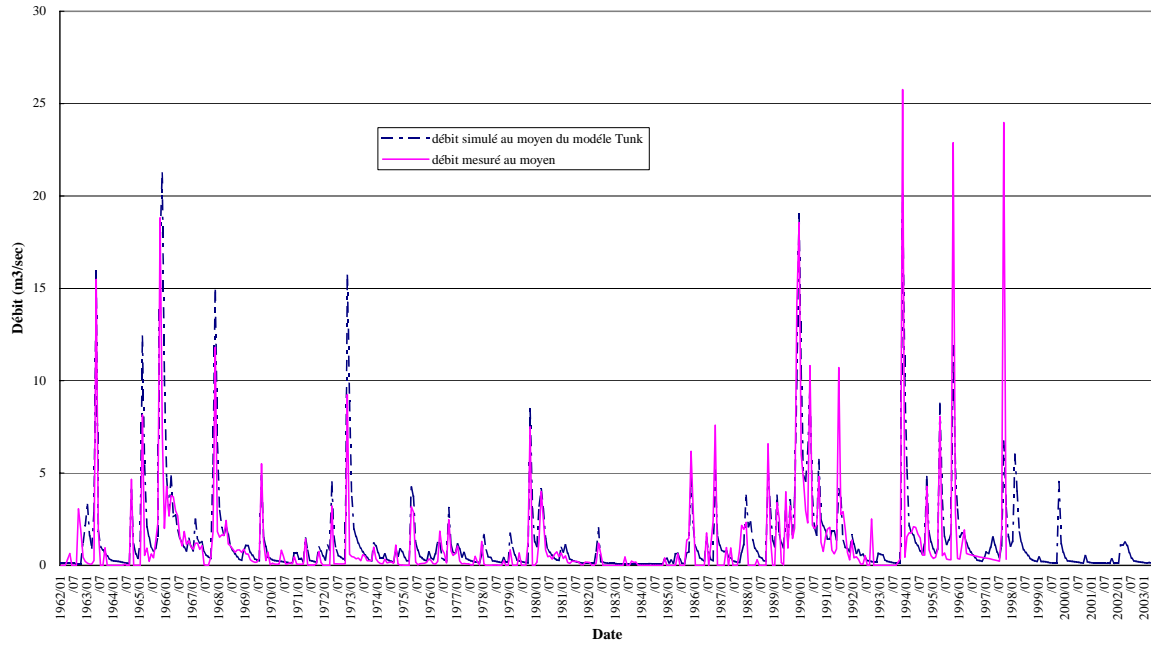
The Development Study on Rural Community Development Project  
in Semi-Arid Atlas Regions with Kheffara Rehabilitation  
in the Kingdom of Morocco

Japan International Cooperation Agency

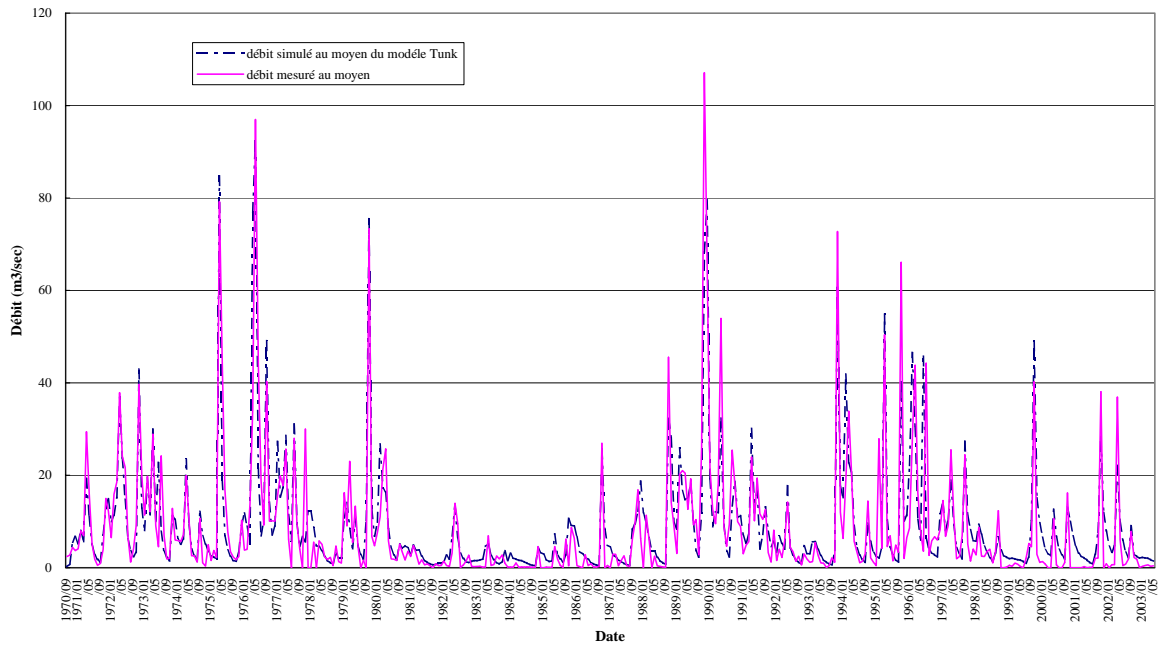
Figure A.5.1 (2)

Result of Tank Model Analyses 2

Mesures Mensuelles du débit au moyen du modèle Tunk à la Station hydrométrique Tadighoust



Mesures Mensuelles du débit au moyen du modèle Tunk à la Station hydrométrique B.H.Addakhil



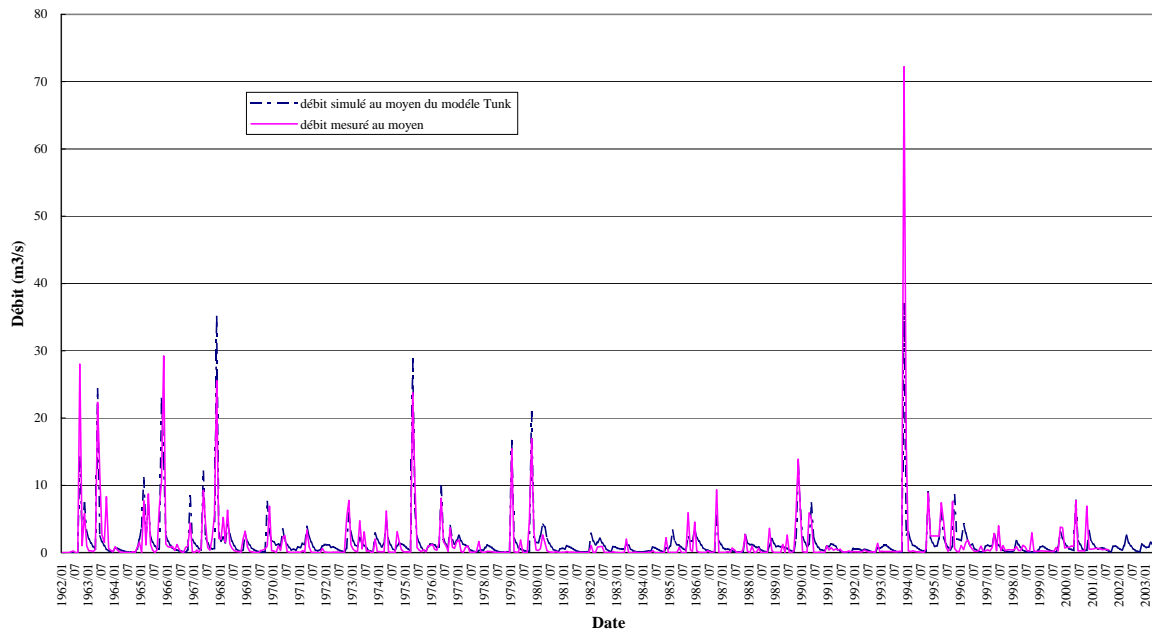
The Development Study on Rural Community Development Project  
in Semi-Arid Atlas Regions with Khattara Rehabilitation  
in the Kingdom of Morocco

Japan International Cooperation Agency

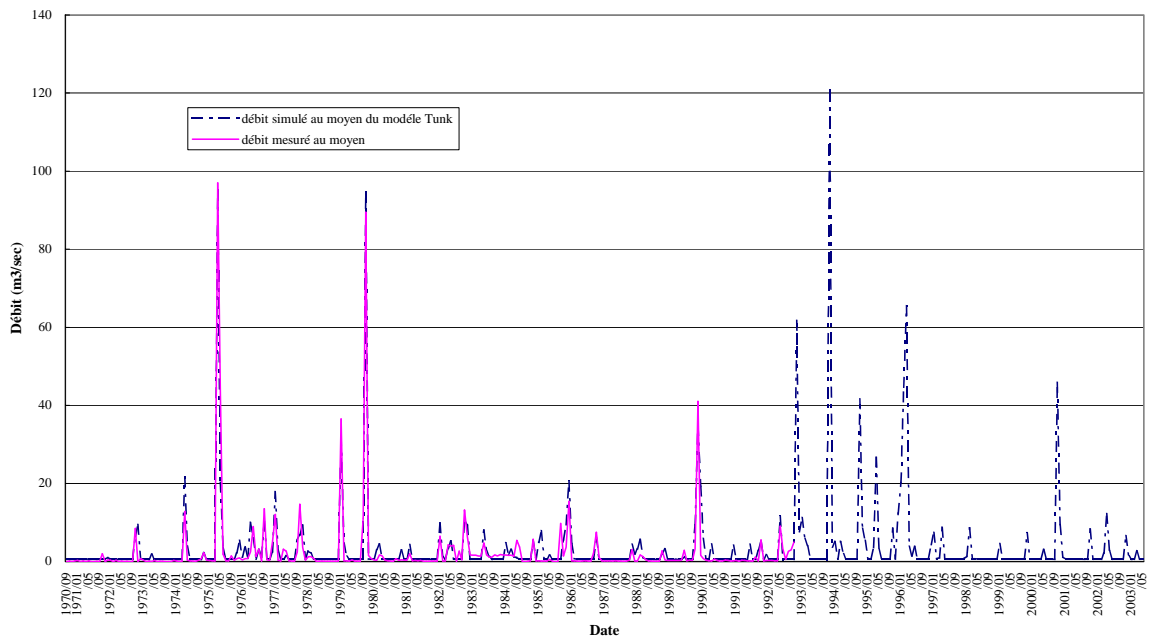
Figure A.5.1 (3)

Result of Tank Model Analyses 3

Mesures Mensuelles du débit au moyen du modèle Tunk à la Station hydrométrique Tazougert



Mesures Mensuelles du débit au moyen du modèle Tunk à la Station hydrométrique Bni Yatti



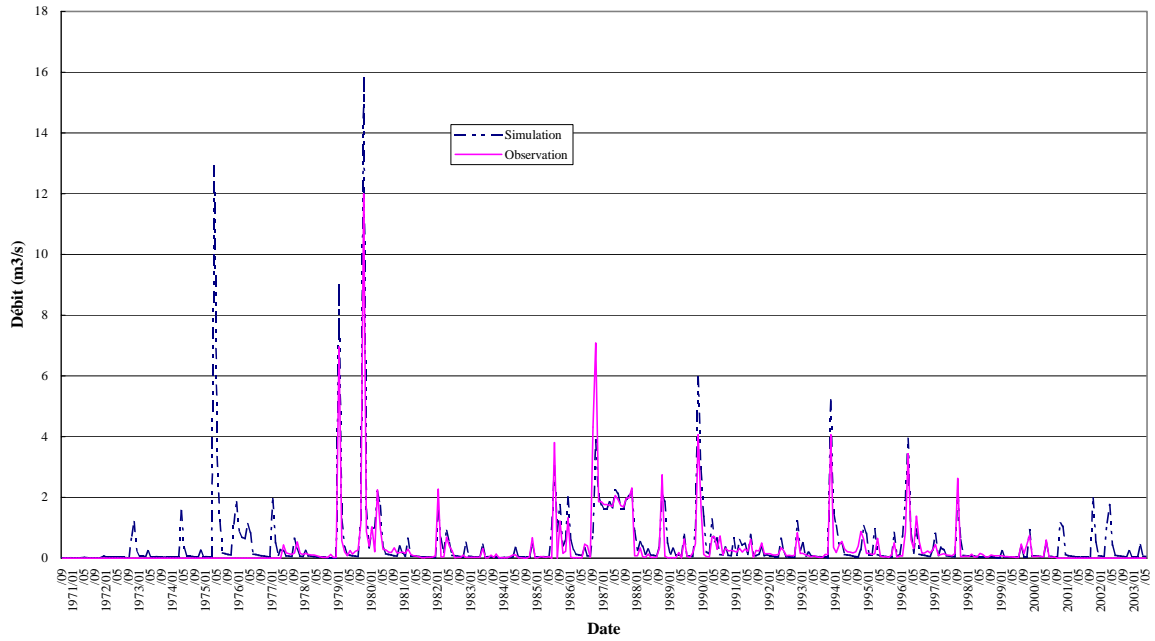
The Development Study on Rural Community Development Project  
in Semi-Arid Atlas Regions with Khetarra Rehabilitation  
in the Kingdom of Morocco

Japan International Cooperation Agency

Figure A.5.1 (4)

Result of Tank Model Analyses 4

Mesures Mensuelles du débit au moyen du modèle Tunk à la Station hydrométrique Tit N'Aissa

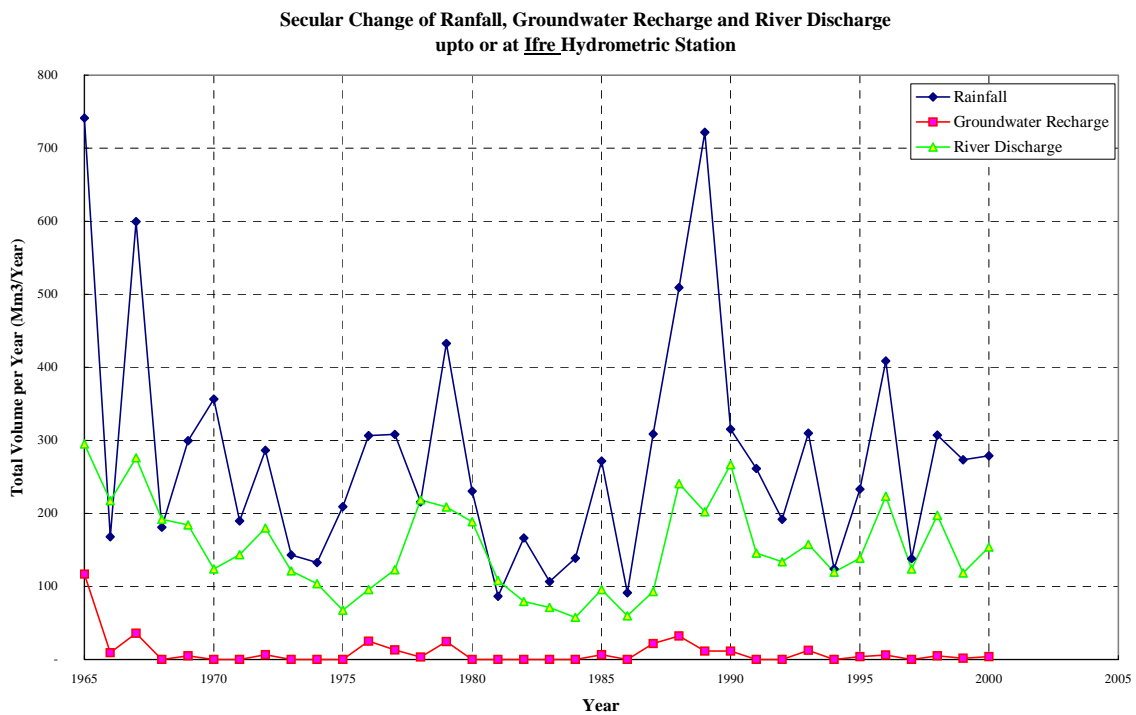
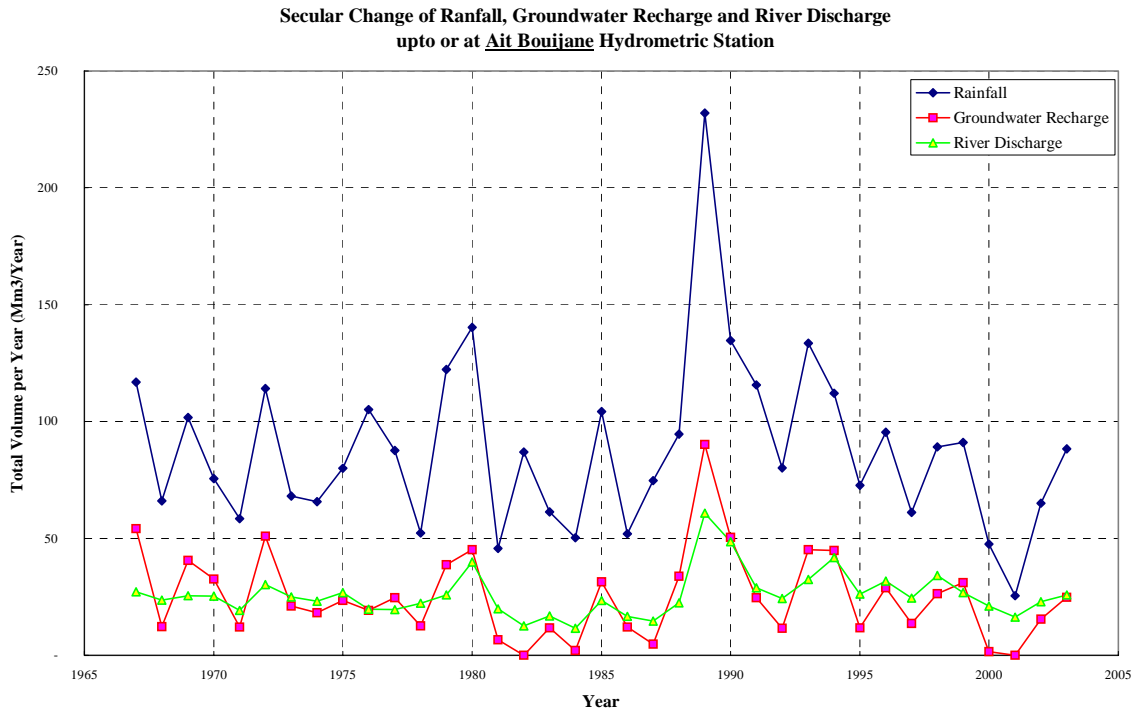


The Development Study on Rural Community Development Project  
in Semi-Arid Atlas Regions with Kheffara Rehabilitation  
in the Kingdom of Morocco

Japan International Cooperation Agency

Figure A.5.1 (5)

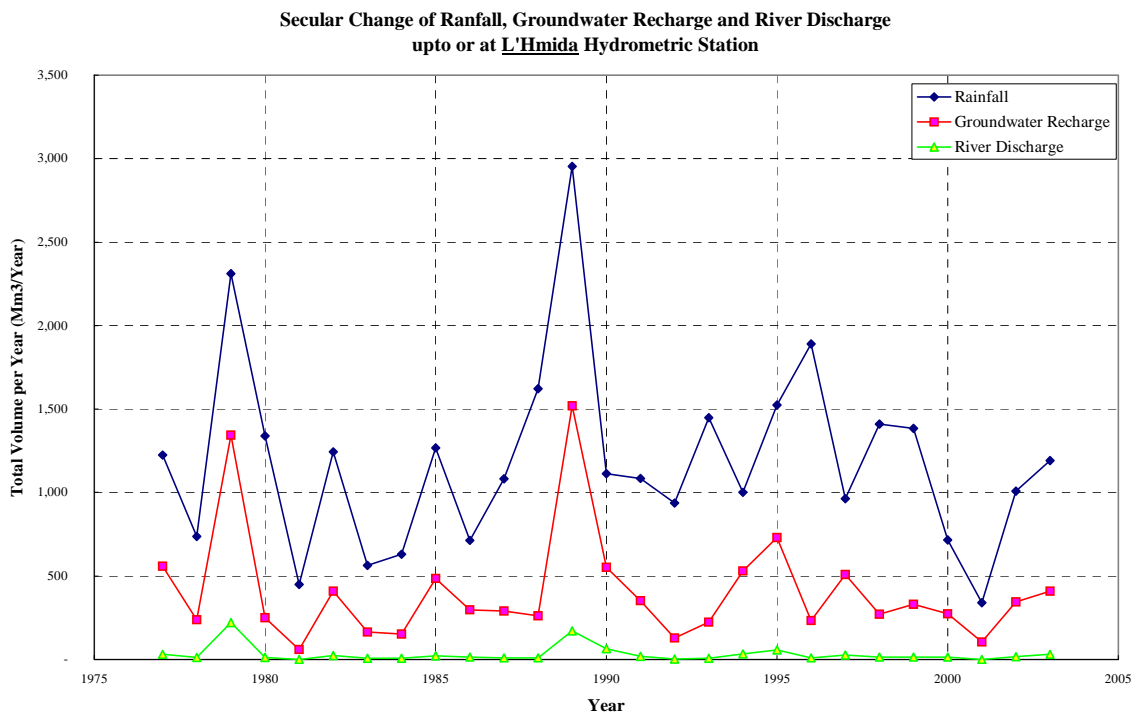
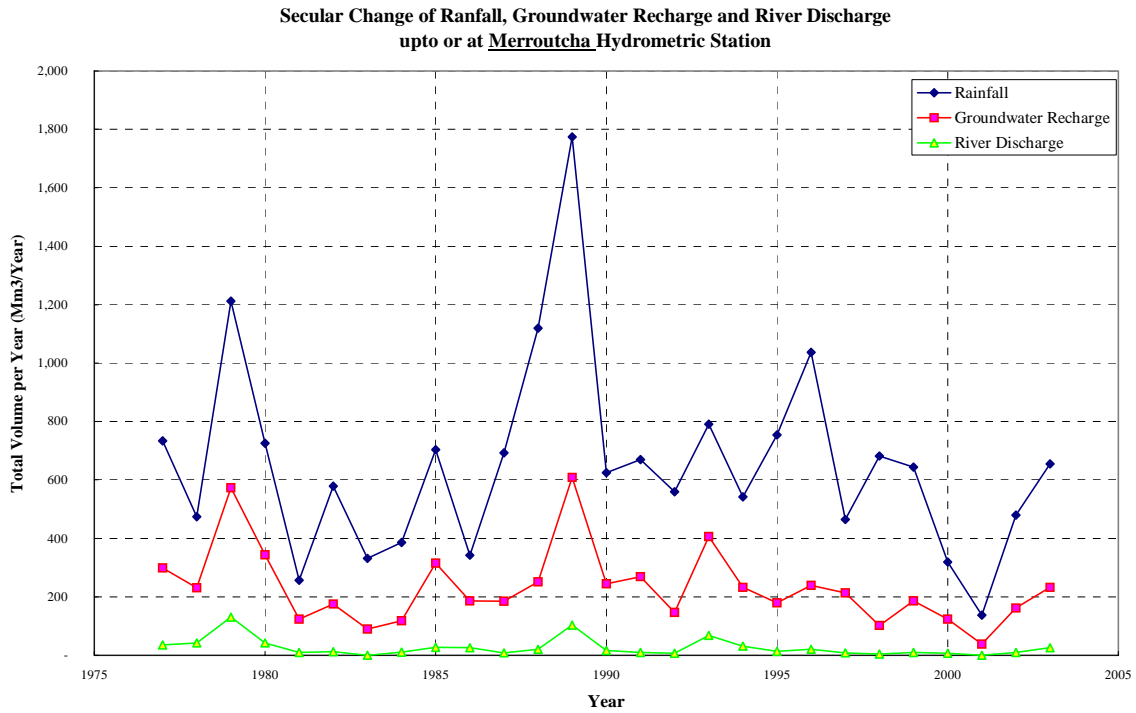
Result of Tank Model Analyses 5



The Development Study on Rural Community Development Project  
in Semi-Arid Atlas Regions with Kheffara Rehabilitation  
in the Kingdom of Marocco  
Japan International Cooperation Agency

Figure A.5.2 (1)  
Rainfall, Groundwater Recharge and River  
Discharge 1





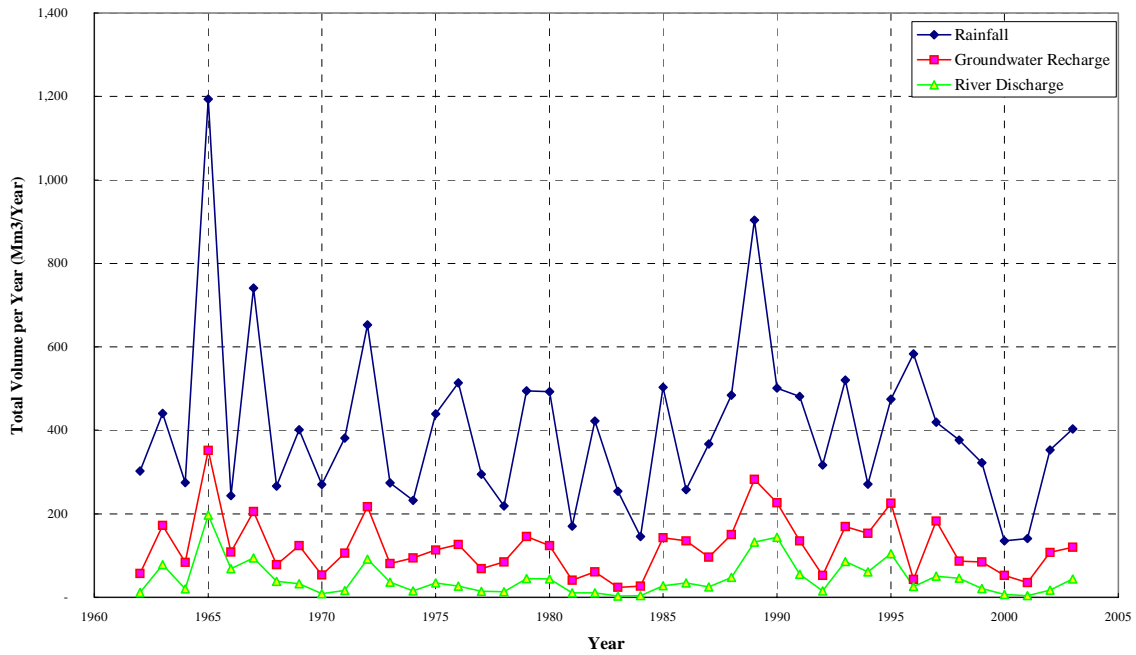
The Development Study on Rural Community Development Project  
in Semi-Arid Atlas Regions with Khetarra Rehabilitation  
in the Kingdom of Marocco

Japan International Cooperation Agency

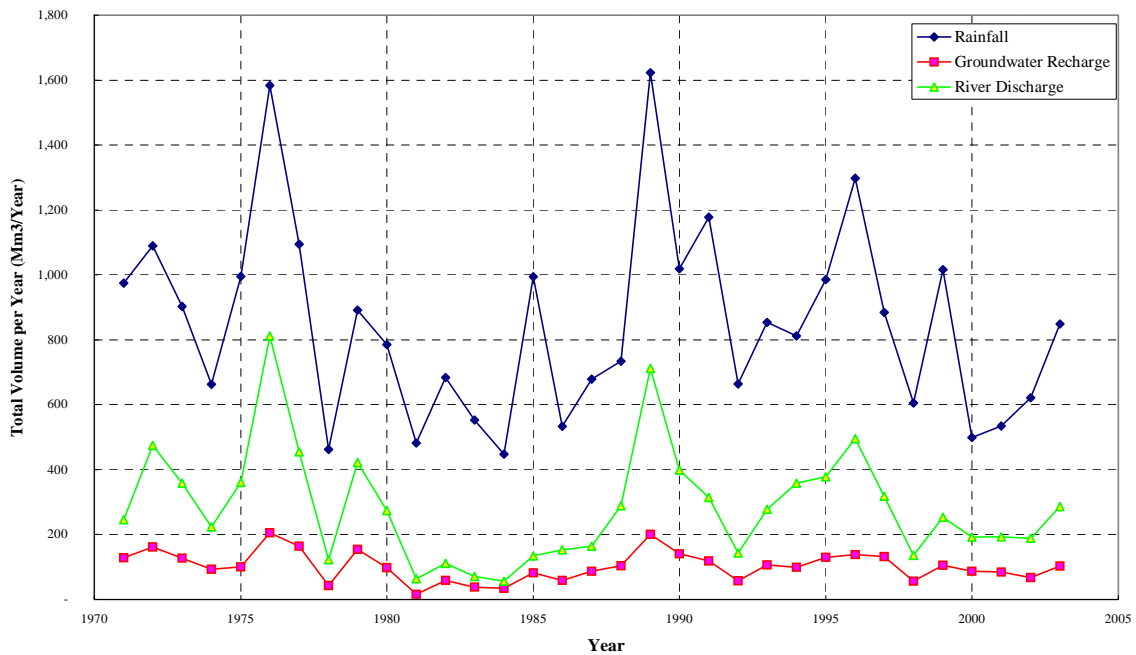
Figure A.5.2 (2)

Rainfall, Groundwater Recharge and River Discharge 2

Secular Change of Ranfall, Groundwater Recharge and River Discharge upto or at Tadighoust Hydrometric Station



Secular Change of Ranfall, Groundwater Recharge and River Discharge upto or at B.H.Adakhil Hydrometric Station



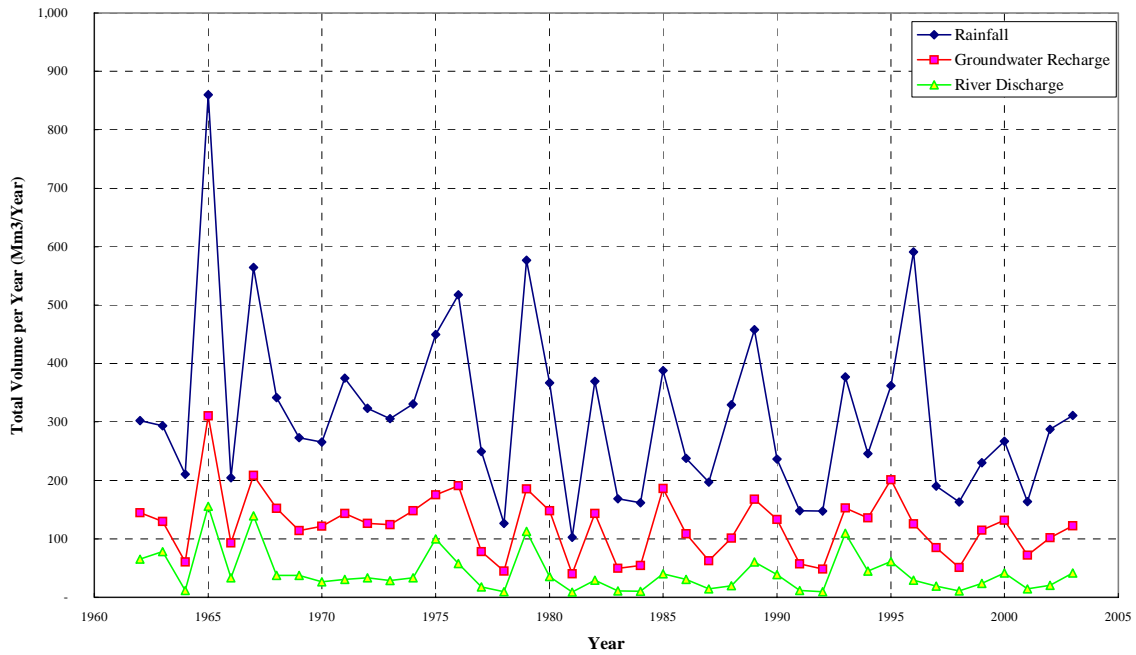
The Development Study on Rural Community Development Project in Semi-Arid Atlas Regions with Khetarra Rehabilitation in the Kingdom of Morocco

Japan International Cooperation Agency

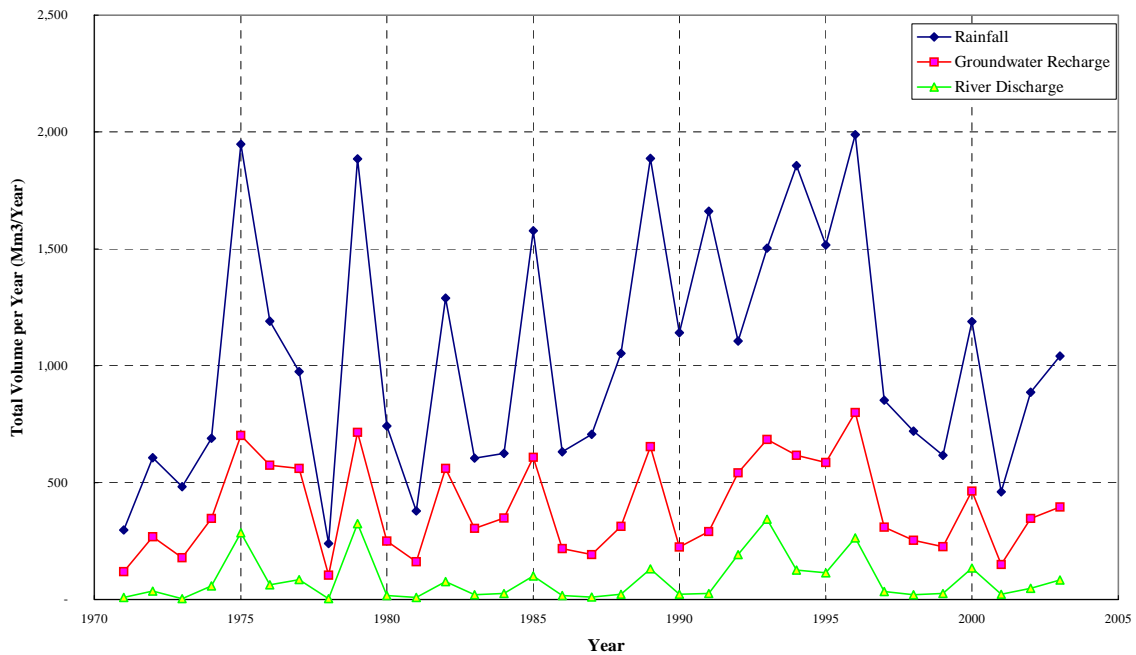
Figure A.5.2 (3)

Rainfall, Groundwater Recharge and River Discharge 3

Secular Change of Ranfall, Groundwater Recharge and River Discharge upto or at Tazougert Hydrometric Station



Secular Change of Ranfall, Groundwater Recharge and River Discharge upto or at Beni Yatti Hydrometric Station

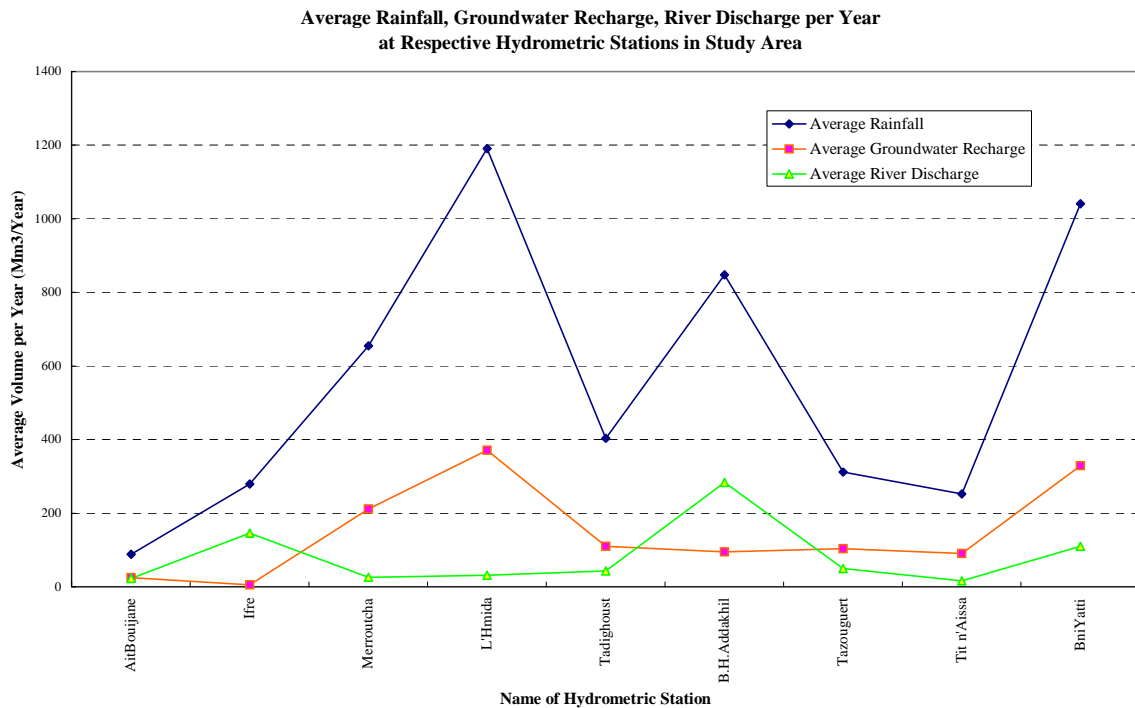
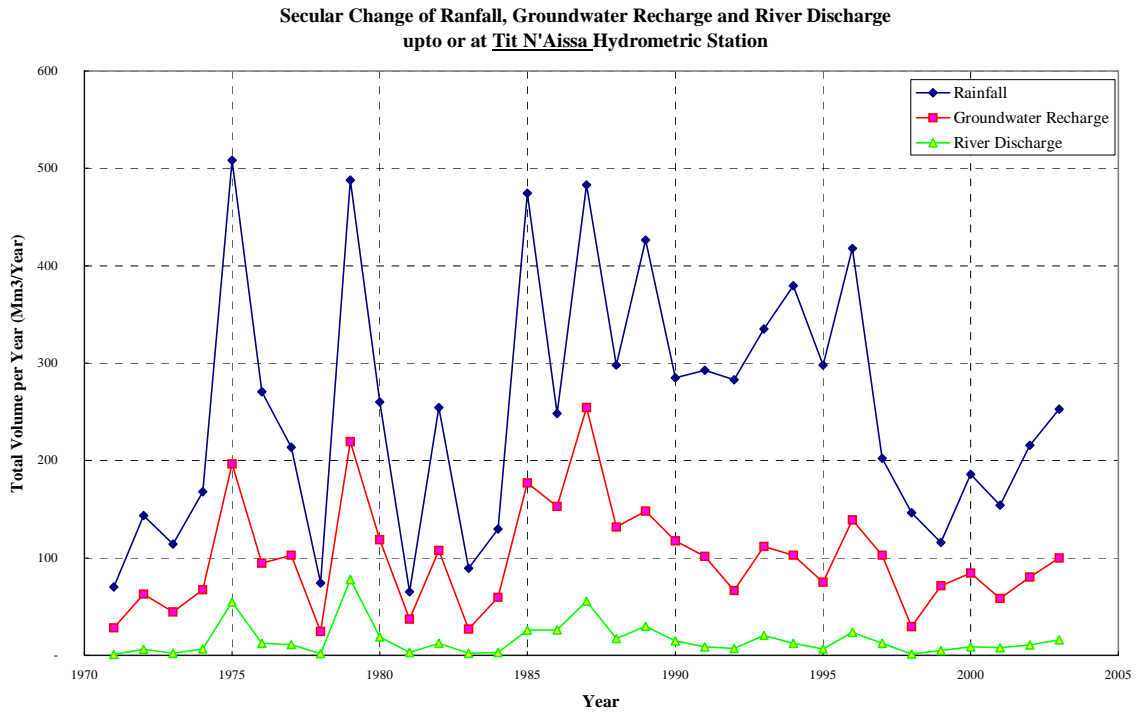


The Development Study on Rural Community Development Project  
in Semi-Arid Atlas Regions with Khetarra Rehabilitation  
in the Kingdom of Marocco

Japan International Cooperation Agency

Figure A.5.2 (4)

Rainfall, Groundwater Recharge and River Discharge 4



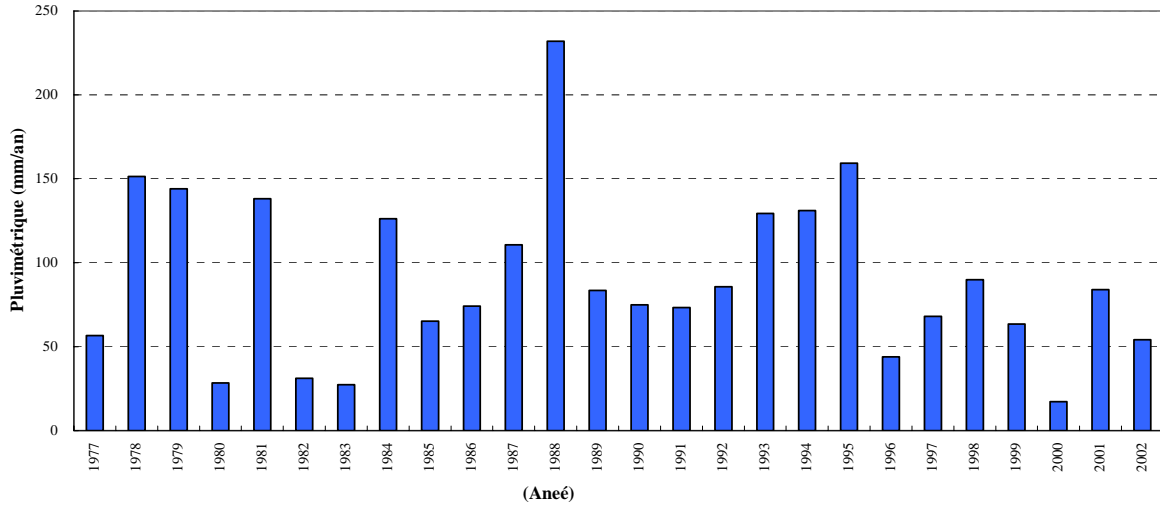
The Development Study on Rural Community Development Project  
in Semi-Arid Atlas Regions with Khetarra Rehabilitation  
in the Kingdom of Morocco

Japan International Cooperation Agency

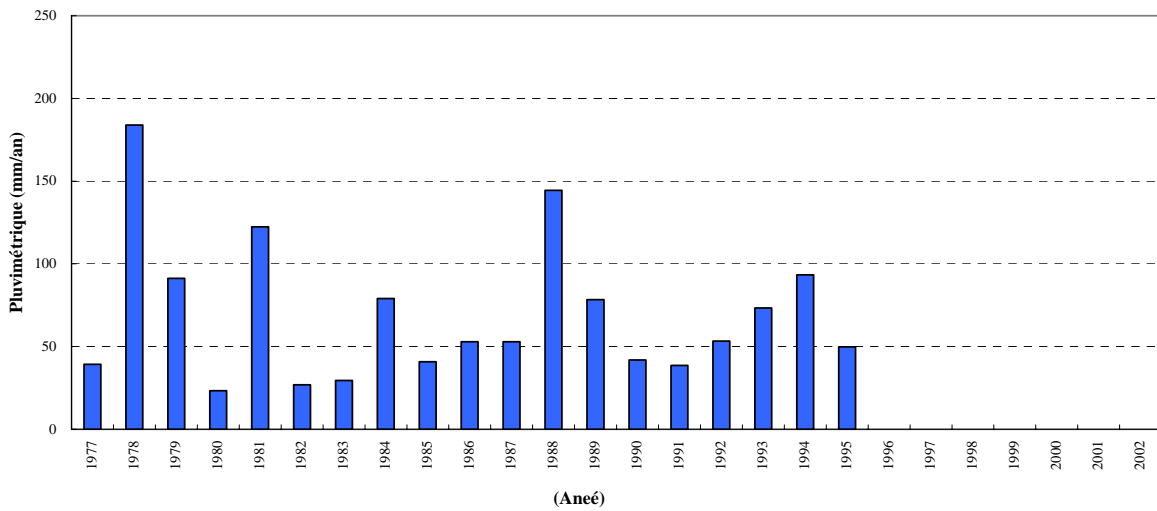
Figure A.5.2 (5)

Rainfall, Groundwater Recharge and River Discharge 5

**Pluimétrie annuelle a la Station Hydrométrique Merroucha**



**Pluimétrie annuelle a la Station Hydrométrique L'Hmida**

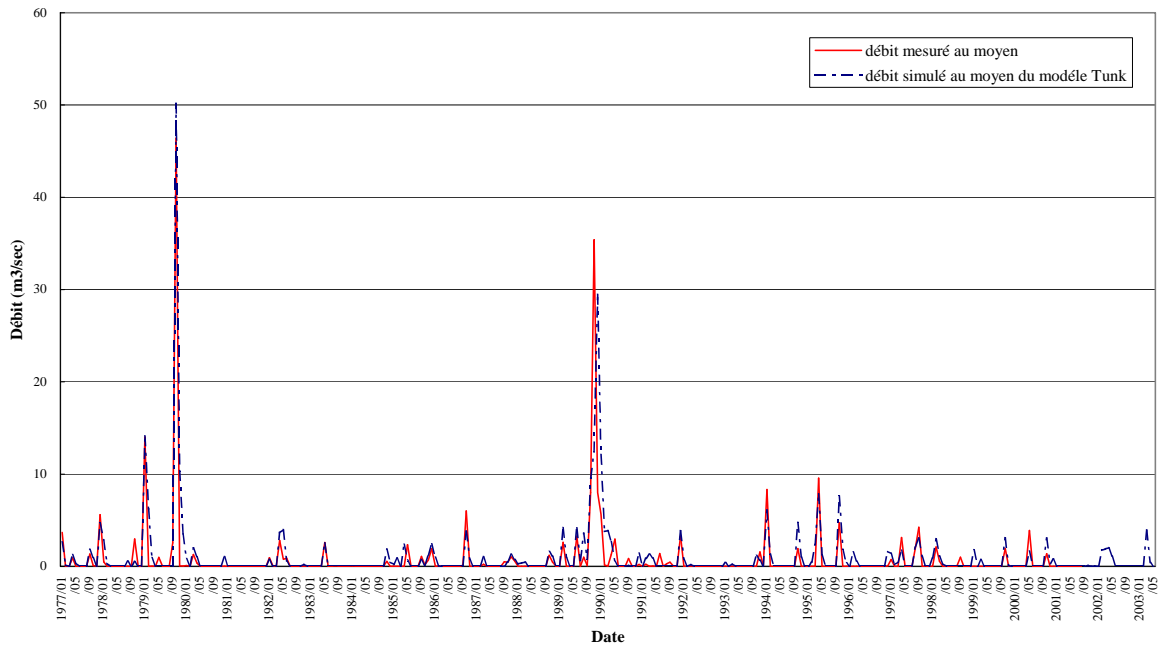


The Development Study on Rural Community Development Project  
in Semi-Arid Atlas Regions with Kheffara Rehabilitation  
in the Kingdom of Morocco

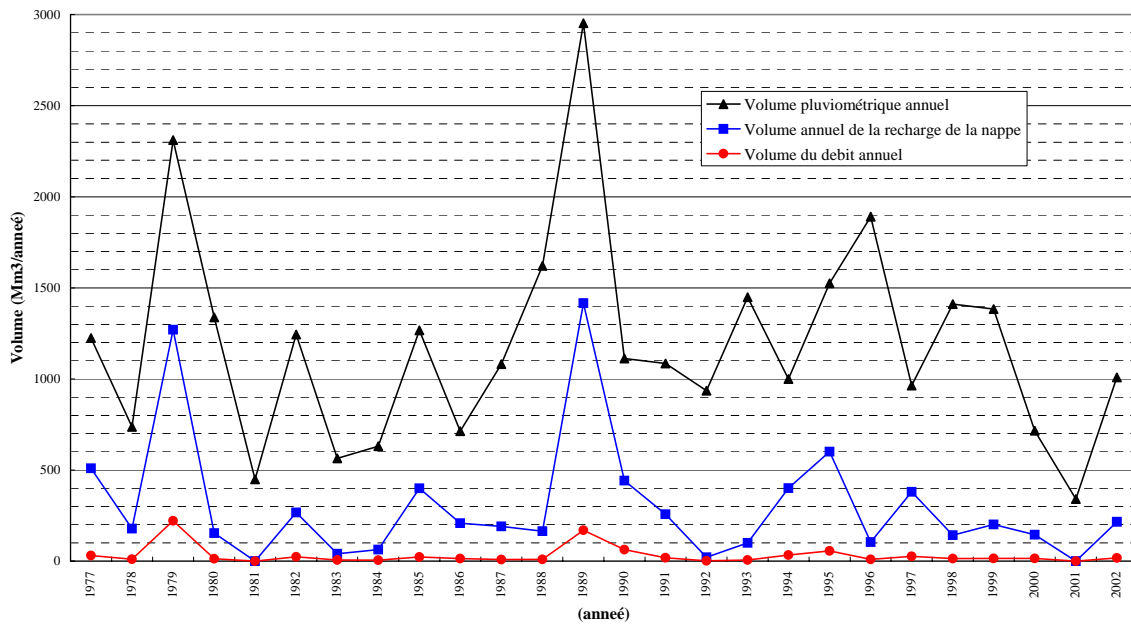
Japan International Cooperation Agency

Figure A.5.3  
Annual Precipitation Sequences at  
Merroucha and L'Hmida Hydrometrical  
Stations

Mesures Mensuelles du débit et Simulation du débit au moyen du modèle Tunk à la Station hydrologique L'Hmida



Volume de la pluviosité annuelle & recharge des nappes souterraines du bassin de la rivière Gheris jusqu'a la station Hydrologique L'Hmida Et volume de l'écoulement annuel de la rivière au niveau de la Station calculé selon le modèle Tunk

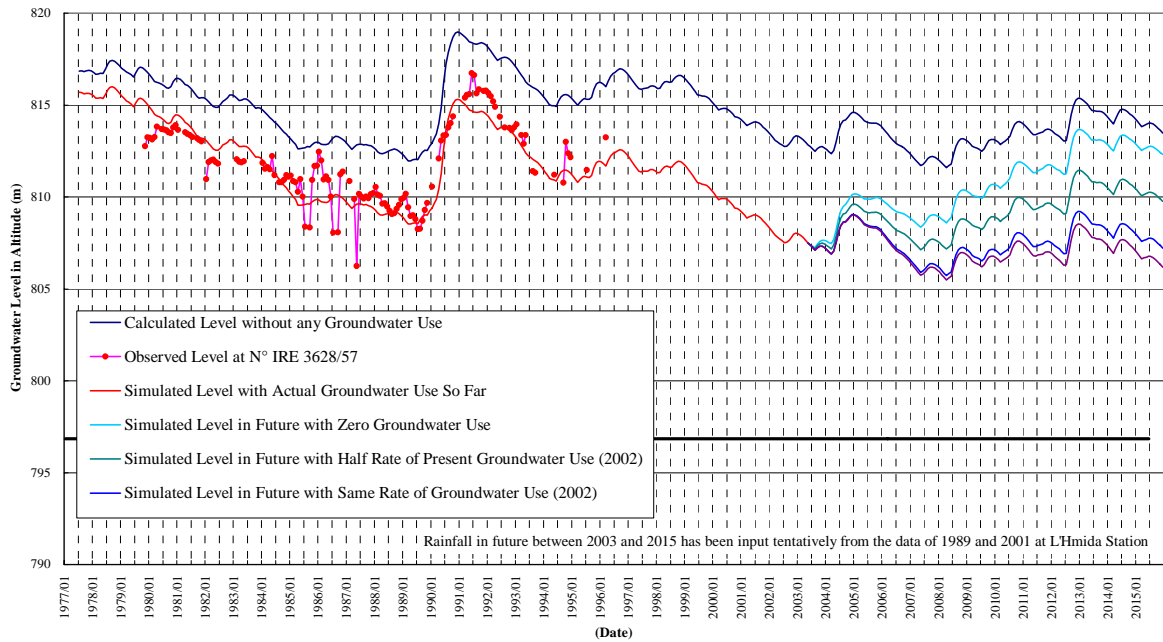


The Development Study on Rural Community Development Project  
in Semi-Arid Atlas Regions with Kheffara Rehabilitation  
in the Kingdom of Morocco

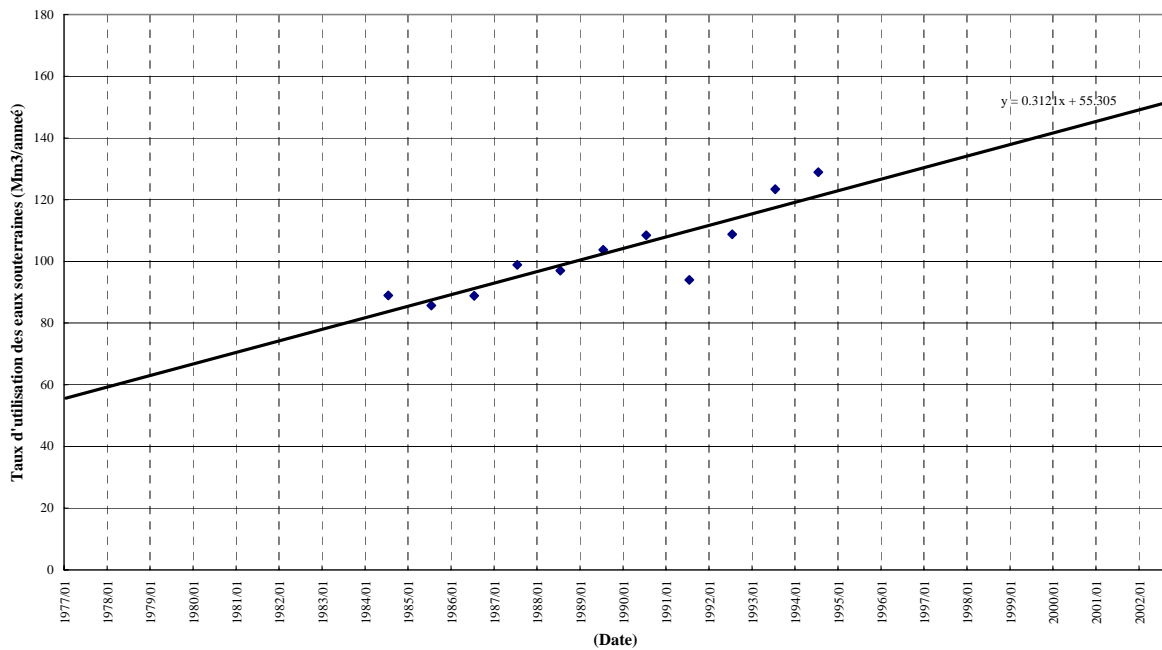
Japan International Cooperation Agency

Figure A.5.4  
Analyzed Discharge and Rainfall,  
Groundwater Recharge at L'Hmida  
Hydrometrical Station

Simulation of Groundwater Level Fluctuation  
by the comparison of L'Hmida Discharge Gauge Station and Observation Well N° IRE 3628/57



Taux d'utilisation des eaux souterraines dans le bassin de la rivière Gheriss jusqu'a la station hydrologique de L'Hmida

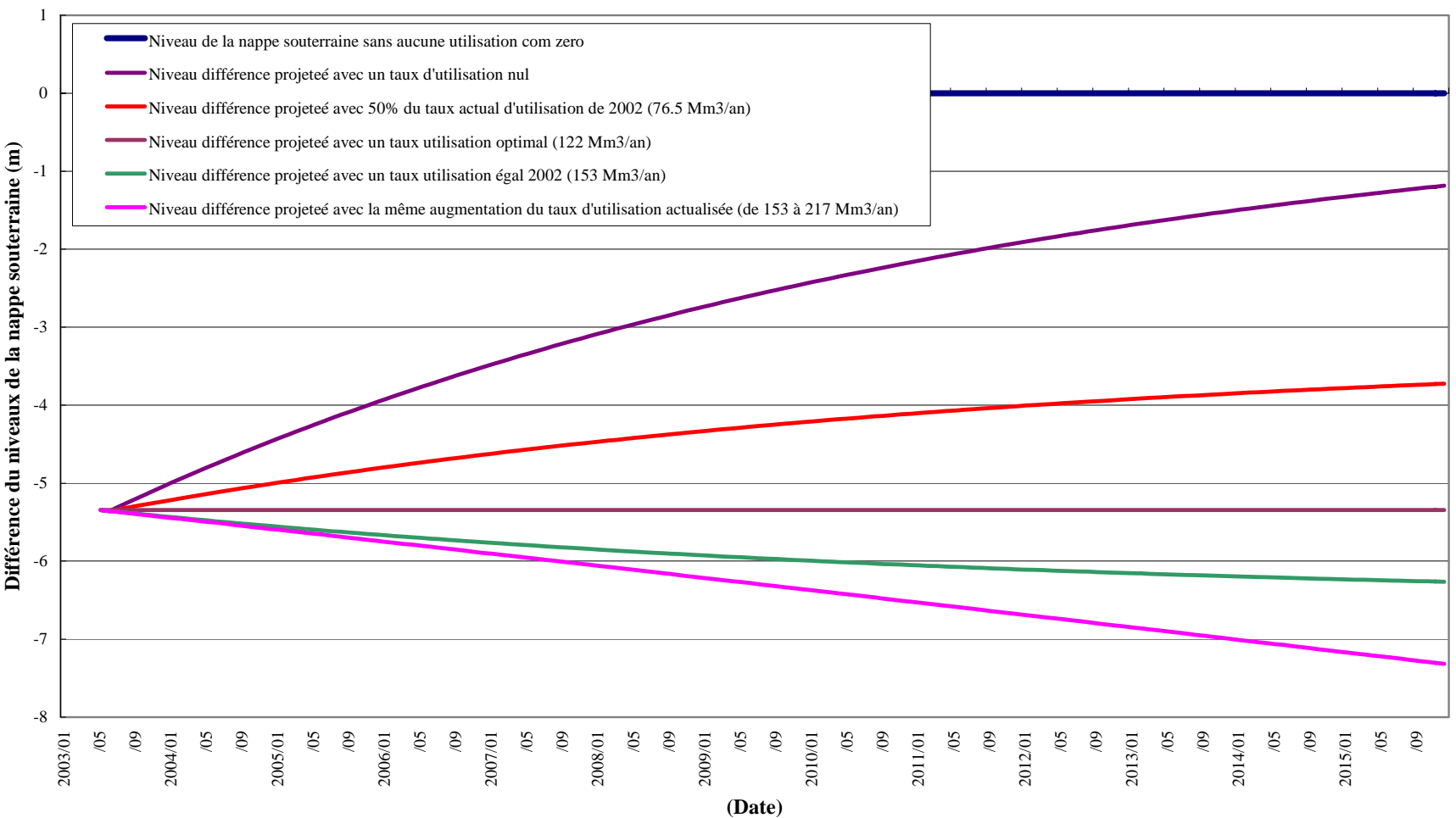


The Development Study on Rural Community Development Project  
in Semi-Arid Atlas Regions with Kheffara Rehabilitation  
in the Kingdom of Morocco

Japan International Cooperation Agency

Figure A.5.5  
Simulated Groundwater Fluctuation with  
Measured Data around L'Hmida Hydro-metric  
Station, and Calculated Ground-water use up to  
the Station

**Projection de la différence simulée du niveau de la nappe souterraine entre le niveau sans aucune utilisation et certain taux d'utilisation donnés dans la légende à la Station Hydrométrique de L'Hmida**

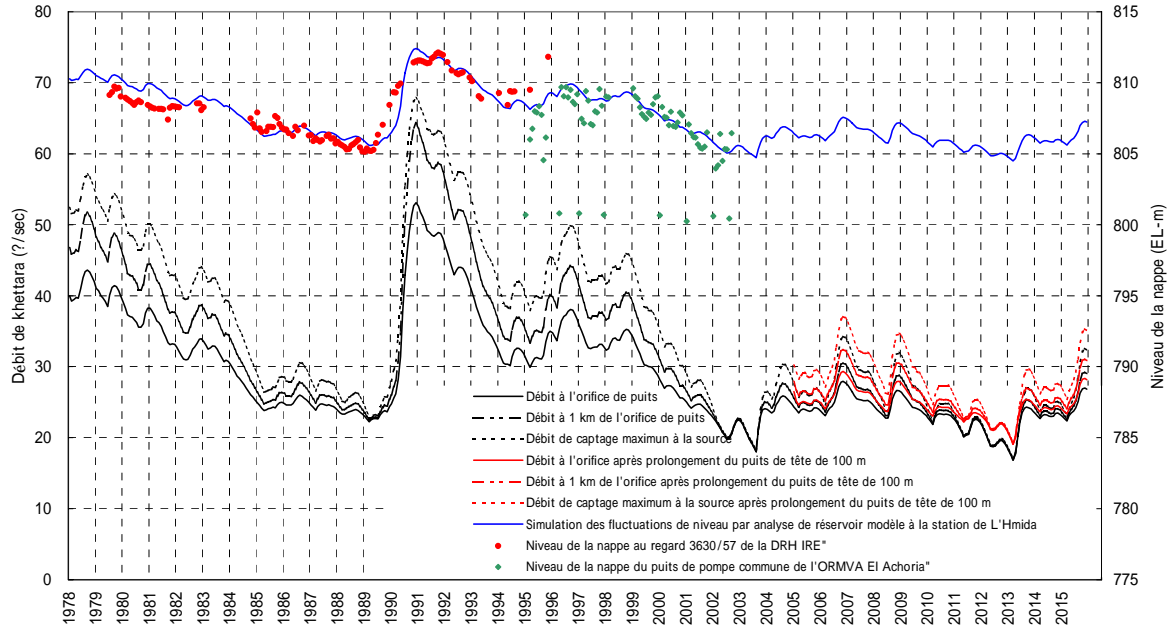


The Development Study on Rural Community Development Project in Semi-Arid Atlas Regions with Khetara Rehabilitation in the Kingdom of Morocco  
Japan International Cooperation Agency

Figure A.5.6  
Simulated Groundwater Level Draw-down by Some Cases of Water Use up to the L'Hmida Station in the Basin Pumping Station



Simulation de débit de la khattara Lambarkia



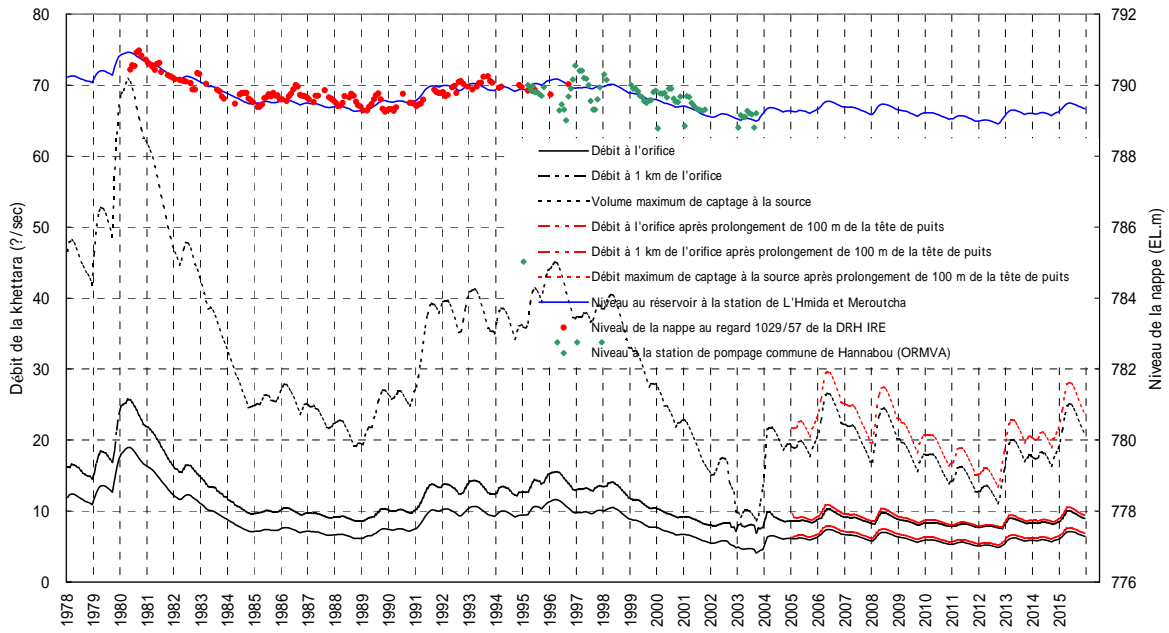
The Development Study on Rural Community Development Project  
in Semi-Arid Atlas Regions with Khettara Rehabilitation  
in the Kingdom of Morocco

Japan International Cooperation Agency

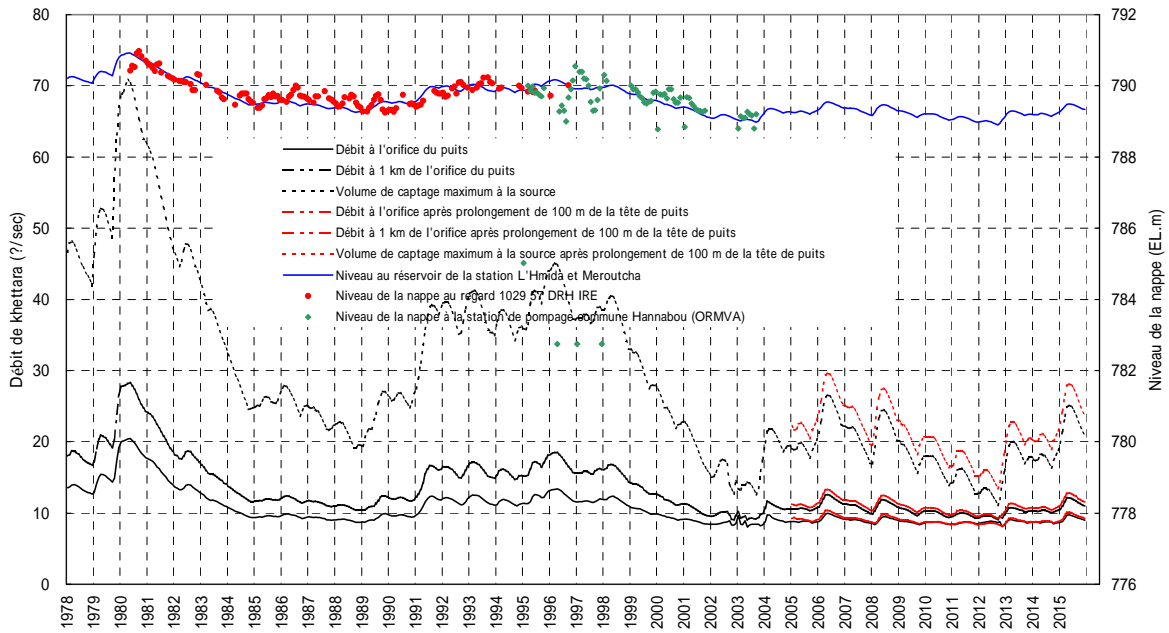
Figure A.6.1 (1)

Simulated Khettara Discharges 1

### Simulation de débit de la khattara Lagrinia



### Simulation des débits de la khattara Oustania



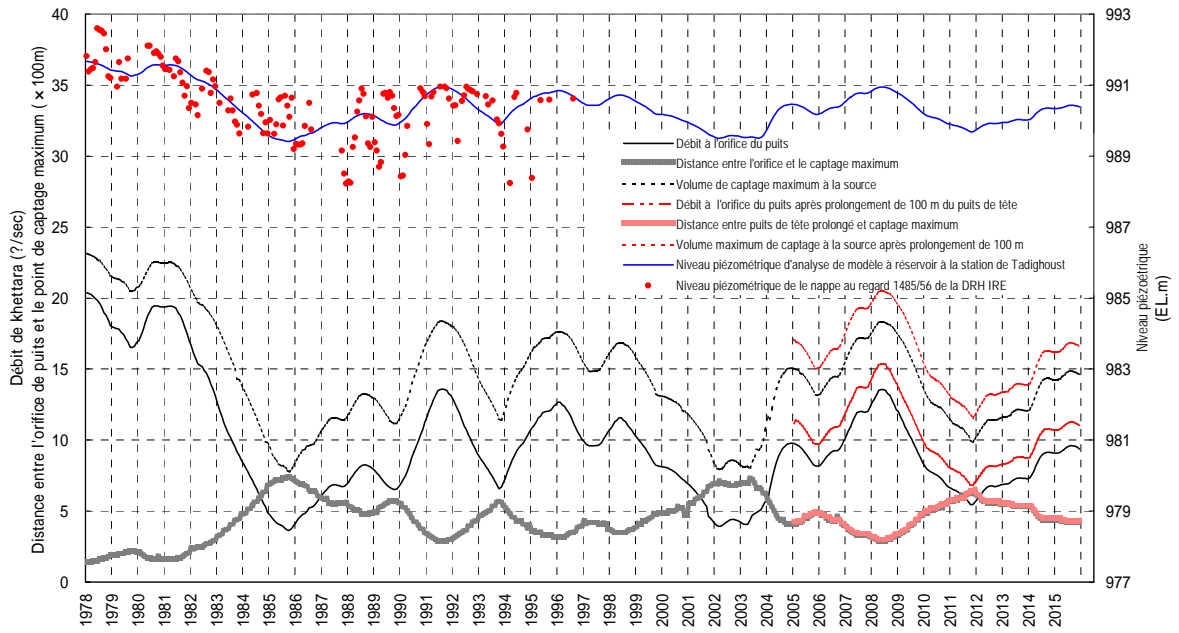
The Development Study on Rural Community Development Project  
in Semi-Arid Atlas Regions with Khettara Rehabilitation  
in the Kingdom of Morocco

Japan International Cooperation Agency

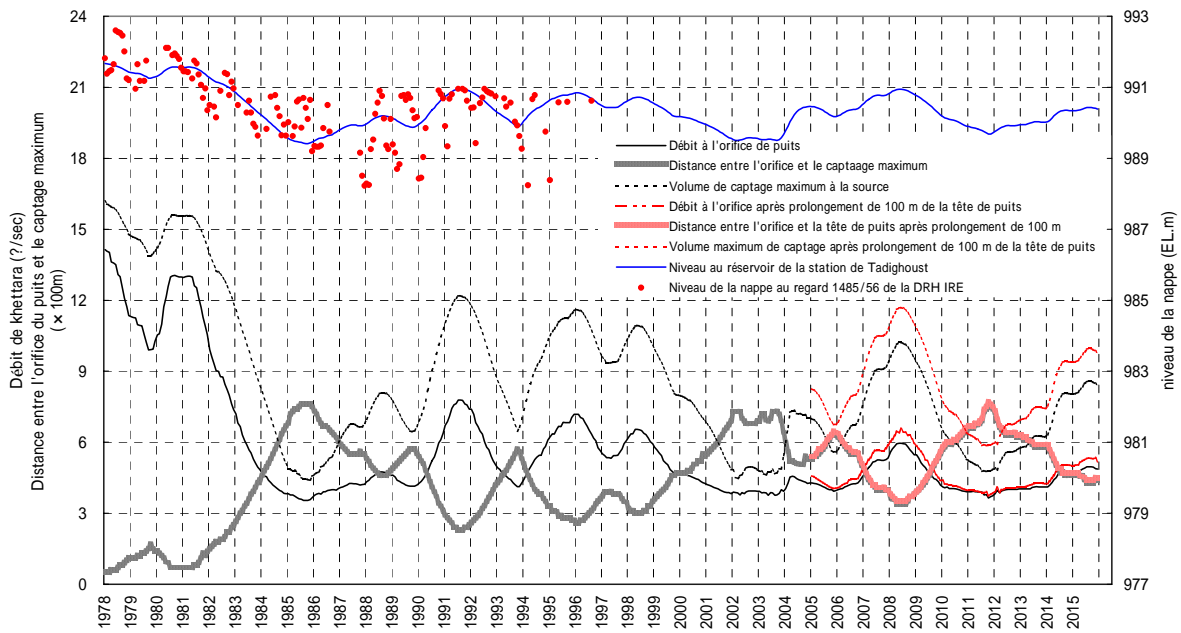
Figure A.6.1 (2)

Simulated Khettara Discharges 2

### Simulation de débit de la khattara Ait Ben Oma



### Simulation de débit de la khattara de Diba

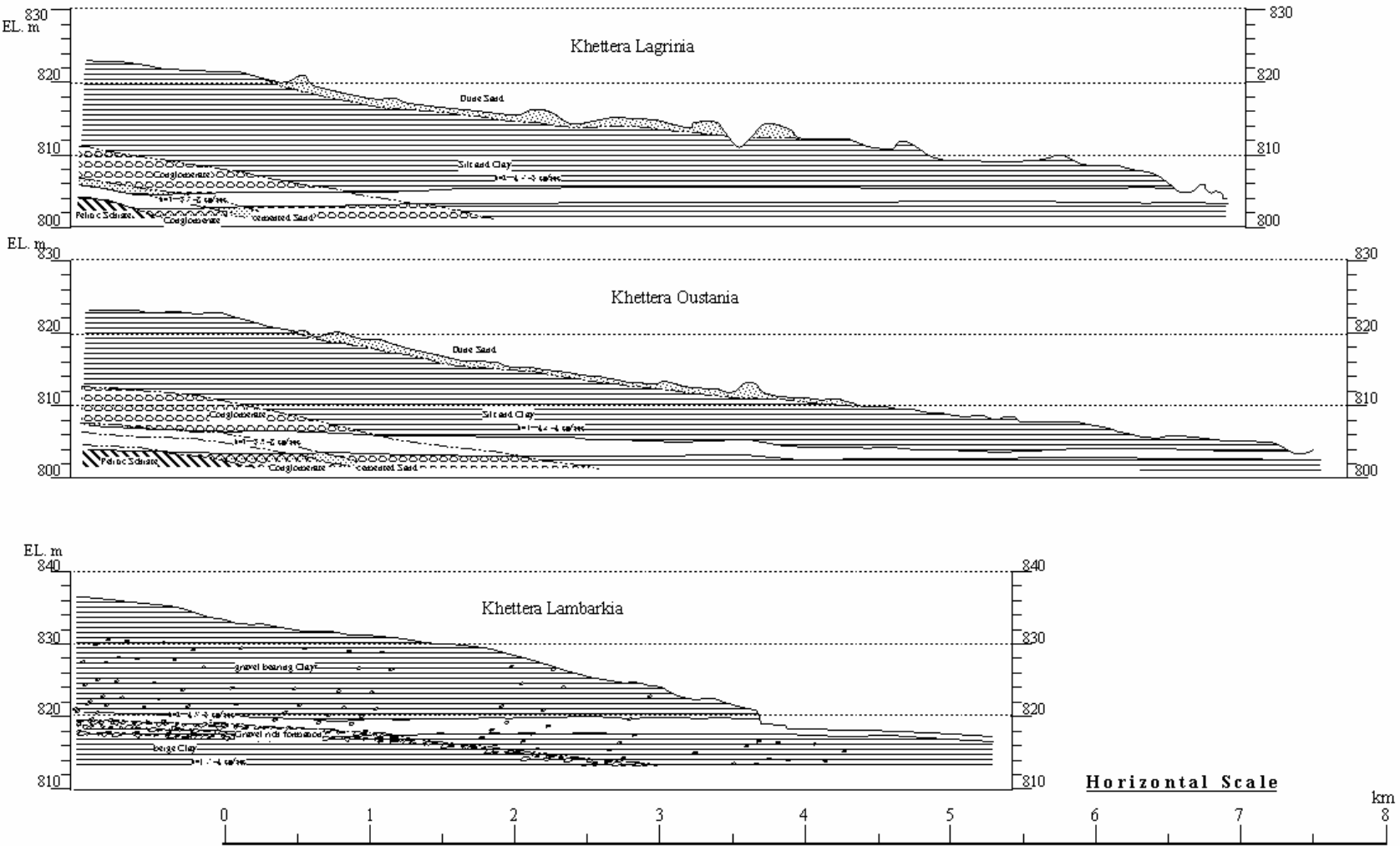


The Development Study on Rural Community Development Project  
in Semi-Arid Atlas Regions with Khettara Rehabilitation  
in the Kingdom of Morocco

Japan International Cooperation Agency

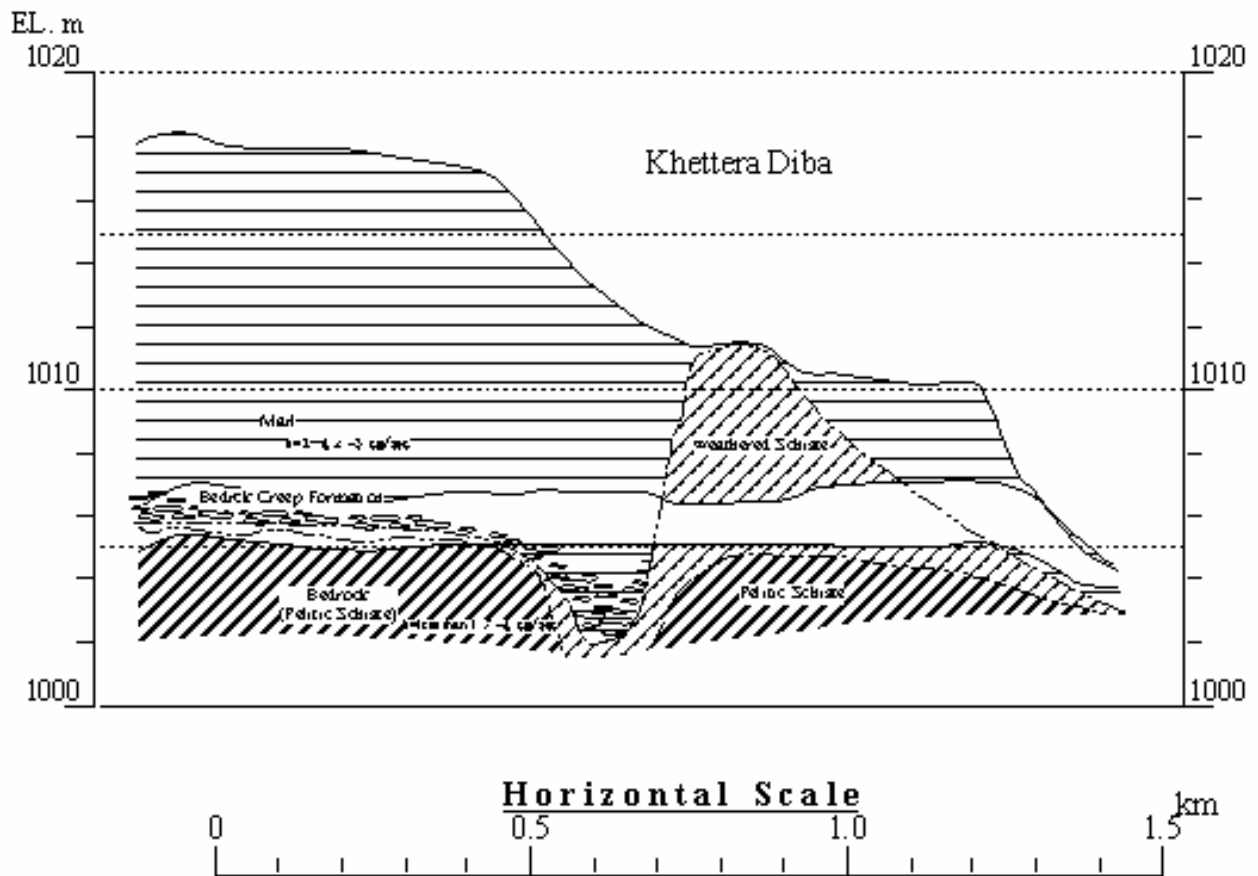
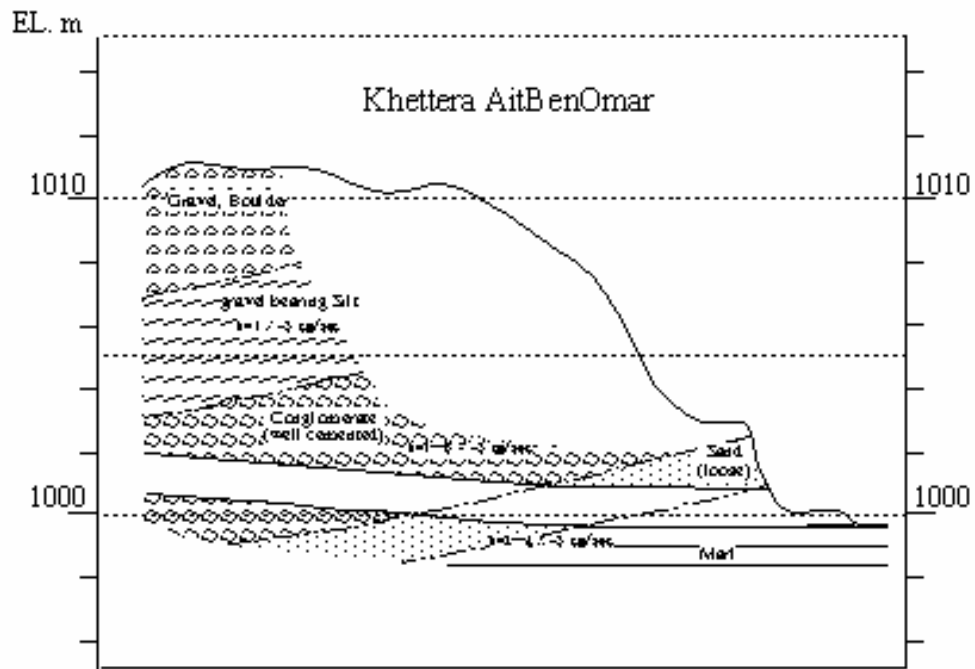
Figure A.6.1 (3)

Simulated Khettara Discharges 3



The Development Study on Rural Community Development Project  
 in Semi-Arid Atlas Regions with Khettera Rehabilitation  
 in the Kingdom of Morocco  
 Japan International Cooperation Agency

Figure A.6.2 (1)  
 Conceptual Geological Profile  
 along Respective Khetteras  
 (Hannabou, Monkara Area)



The Development Study on Rural Community Development Project  
in Semi-Arid Atlas Regions with Khettera Rehabilitation  
in the Kingdom of Morocco

Japan International Cooperation Agency

Figure A.6.2  
Conceptual Geological Profile  
along Respective Khetteras  
(AitBenOmar/La'Ksiba Area)