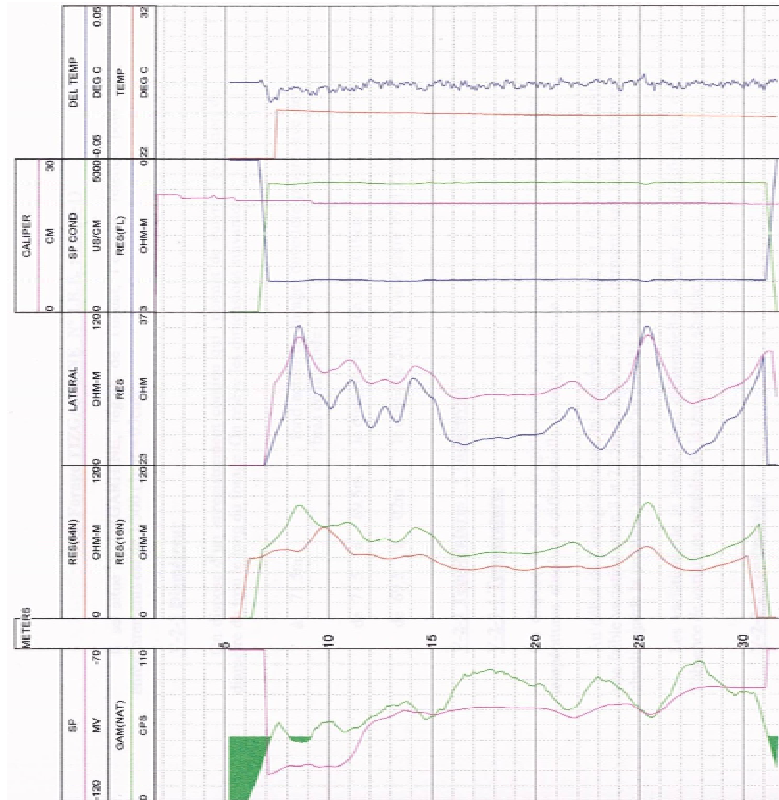


**Almouchoura (Beni-Tadjit) BS (B-5)**



The Development Study on Rural Community Development Project  
in Semi-Arid Atlas Regions with Khettara Rehabilitation  
in the Kingdom of Morocco

Japan International Cooperation Agency

Figure A.4.2 (3)

Result of Borehole  
Geophysical Logging - 3