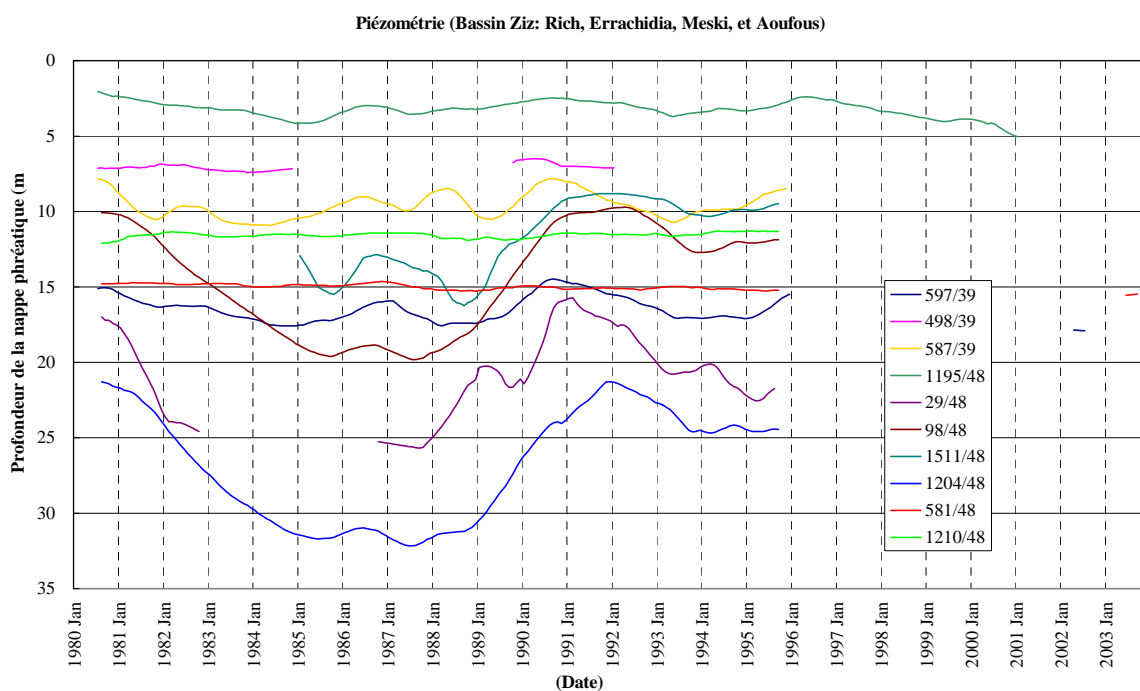
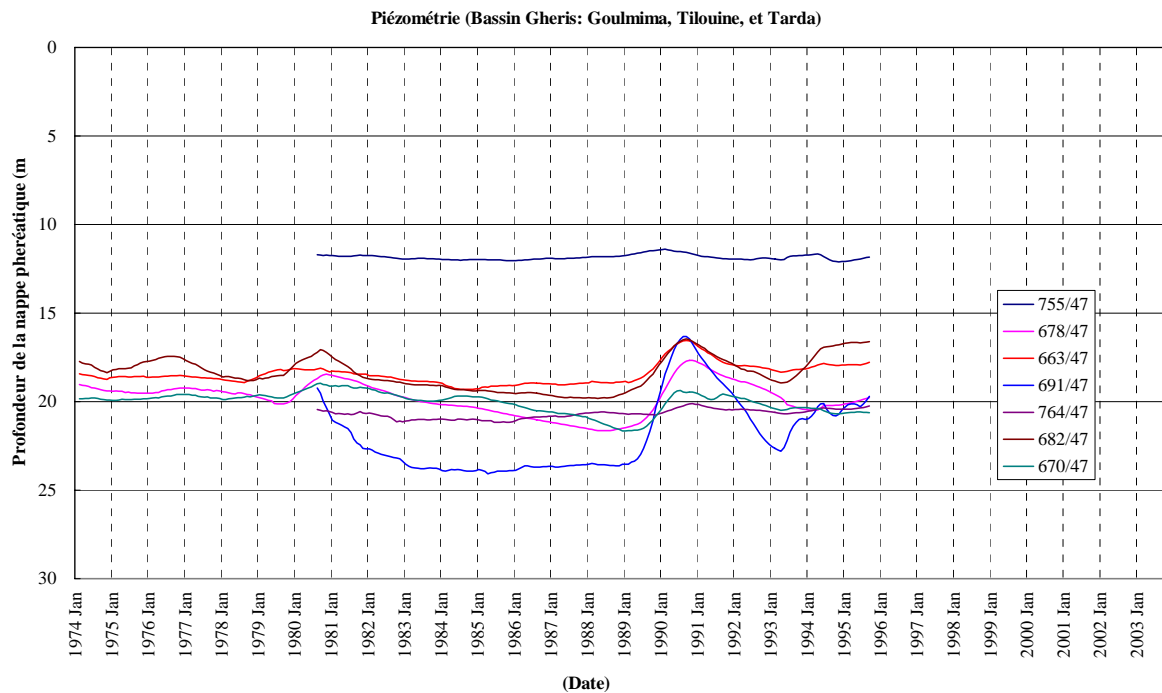


The Development Study on Rural Community Development Project  
in Semi-Arid Atlas Regions with Khetarra Rehabilitation  
in the Kingdom of Morocco

Japan International Cooperation Agency

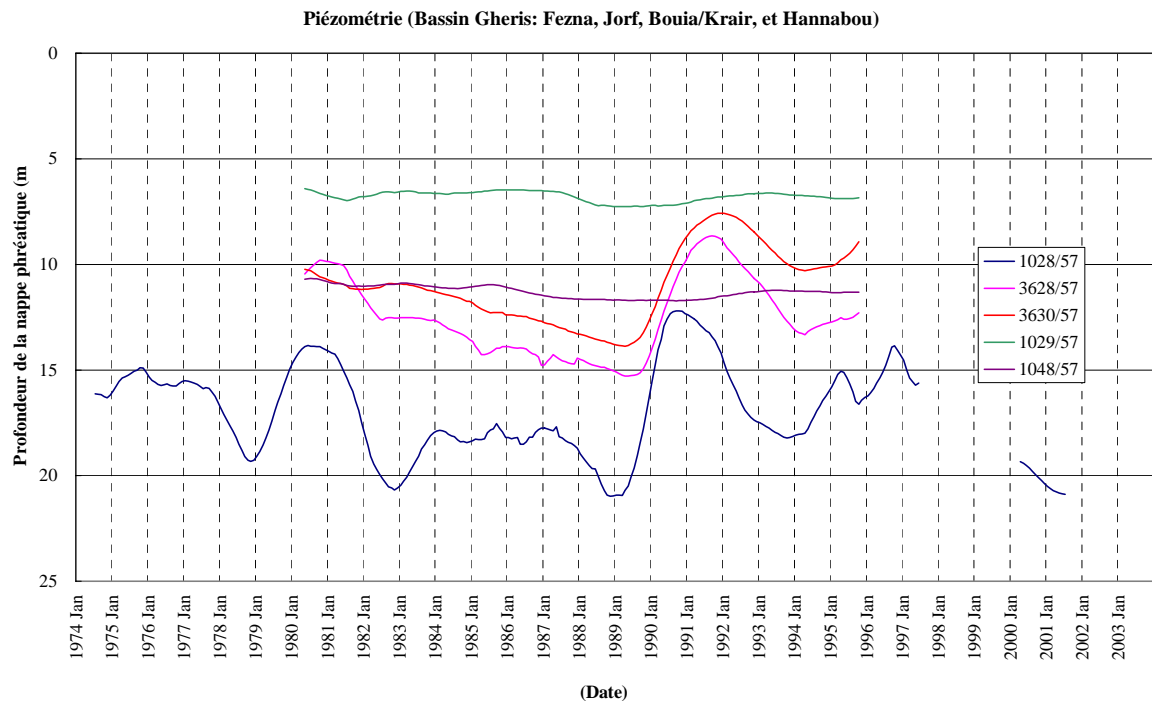
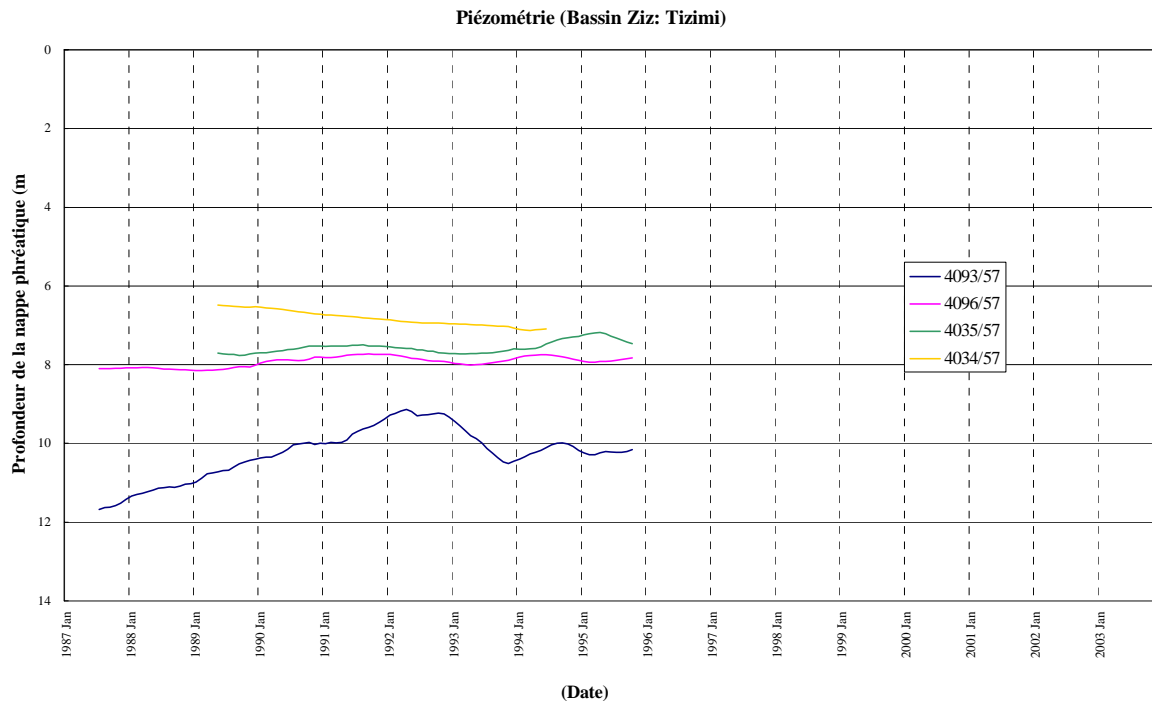
Figure A.3.5 (1)  
Secular Fluctuation of Groundwater Level  
(Mobil Average of 12 months)



The Development Study on Rural Community Development Project  
in Semi-Arid Atlas Regions with Khetarra Rehabilitation  
in the Kingdom of Morocco

Japan International Cooperation Agency

Figure A.3.5 (2)  
Secular Fluctuation of Groundwater Level  
(Mobil Average of 12 months)



The Development Study on Rural Community Development Project  
in Semi-Arid Atlas Regions with Khetarra Rehabilitation  
in the Kingdom of Morocco

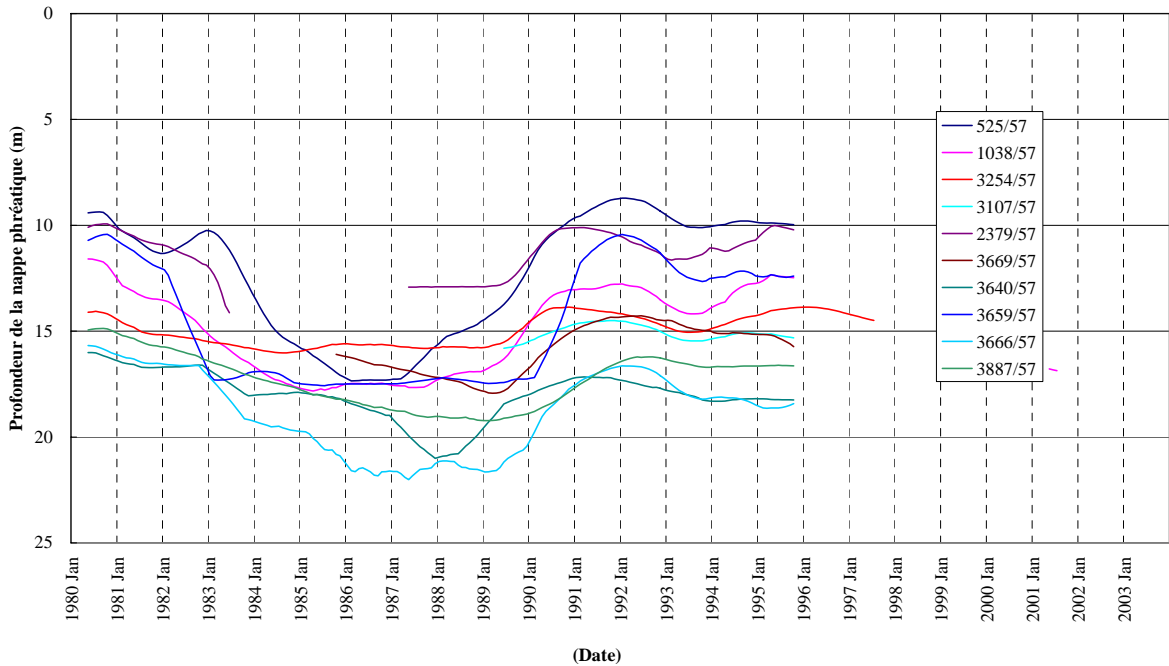
Japan International Cooperation Agency

Figure A.3.5 (3)  
Secular Fluctuation of Groundwater Level  
(Mobil Average of 12 months)

Piézométrie (Bassin Gheris et Ziz (Tafilalet s.s.): El Maadid, Erfoud)



Piézométrie (Bassin Gheris et Ziz (Tafilalet s.s.): Siffa, Oulad Zohras, et Rissani)

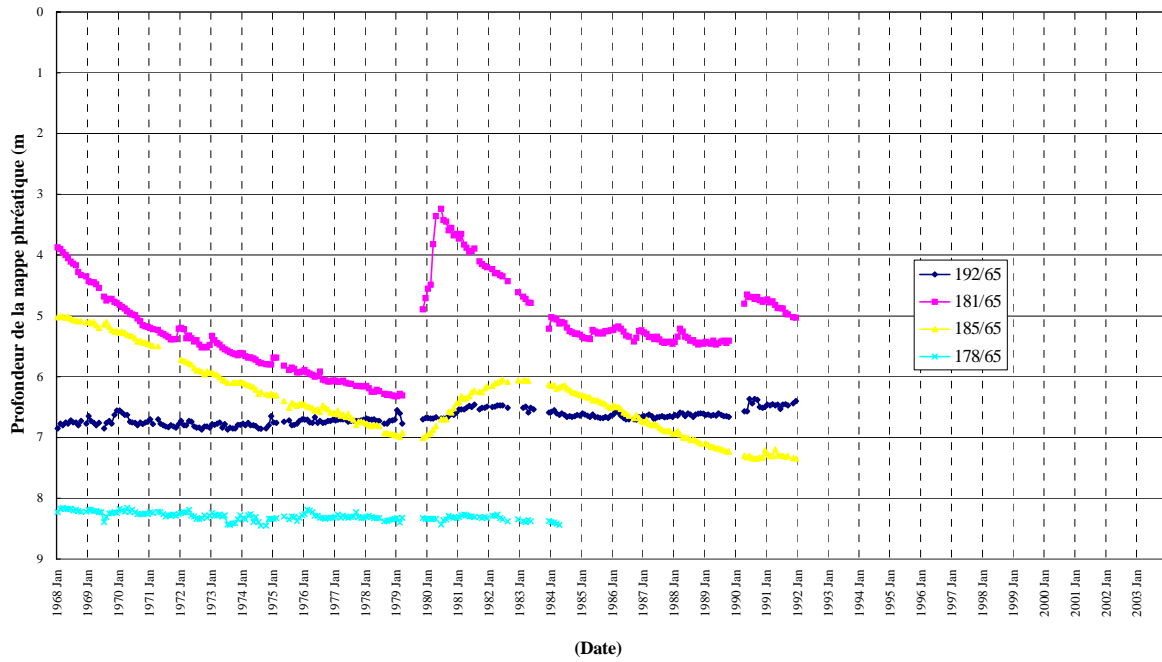


The Development Study on Rural Community Development Project  
in Semi-Arid Atlas Regions with Khetarra Rehabilitation  
in the Kingdom of Morocco

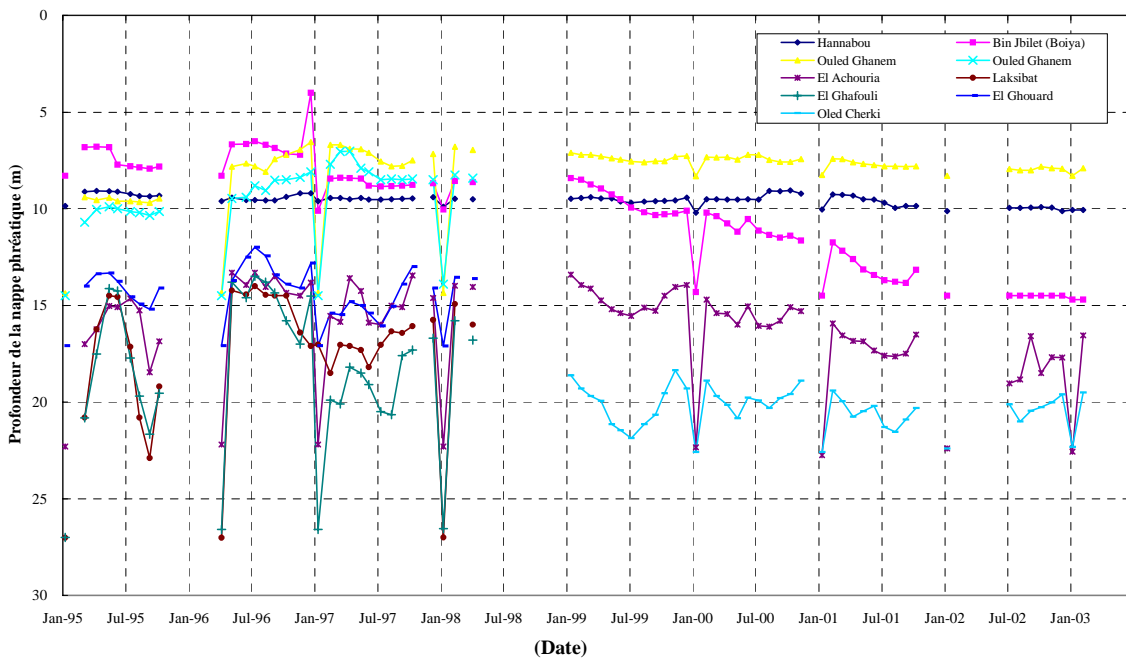
Japan International Cooperation Agency

Figure A.3.5 (4)  
Secular Fluctuation of Groundwater Level  
(Mobil Average of 12 months)

Piézométrie (Bassin Maider: Daya Maider)



Piézométrie (ORMVA: Fezna, Jorf, Bouia, Hannabou: Zone D)

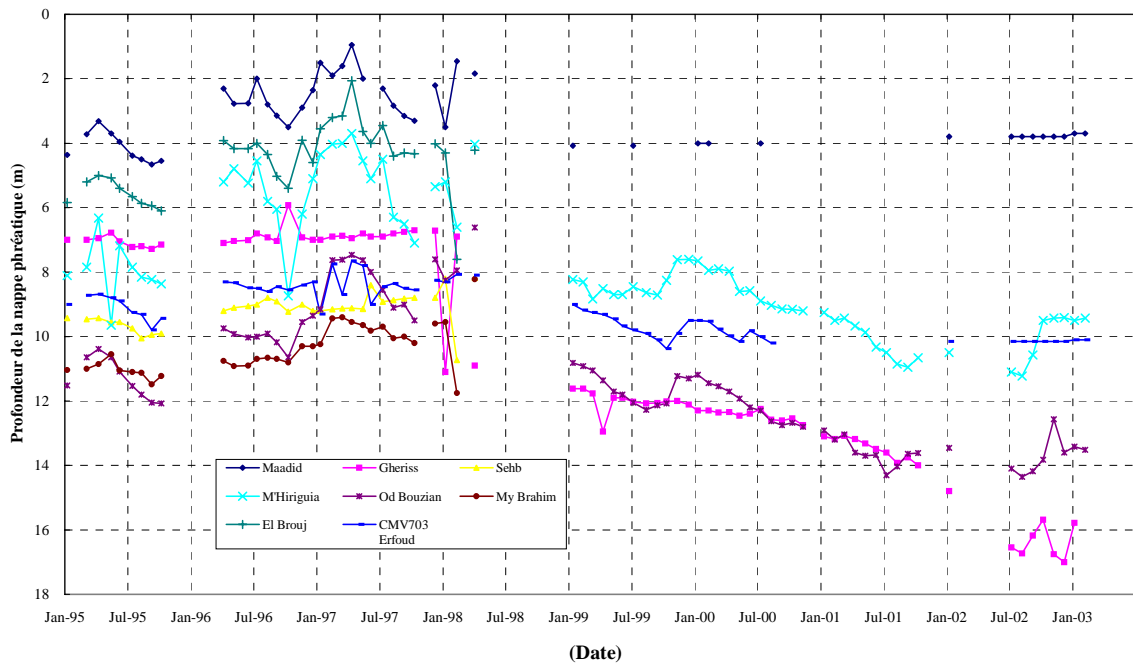


The Development Study on Rural Community Development Project  
in Semi-Arid Atlas Regions with Khattara Rehabilitation  
in the Kingdom of Morocco

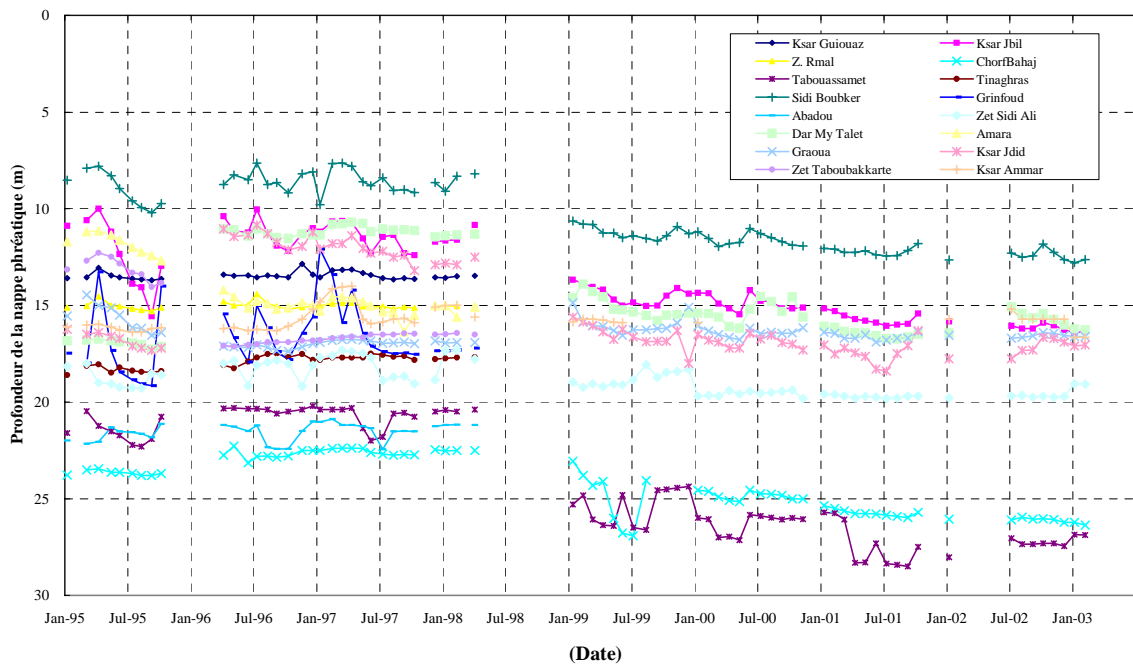
Japan International Cooperation Agency

Figure A.3.5 (5)  
Secular Fluctuation of Groundwater Level  
(Mobil Average of 12 months)

Piézométrie (ORMVA: Erfoud)



Piézométrie (ORMVA: Rissani: Zone E,F)

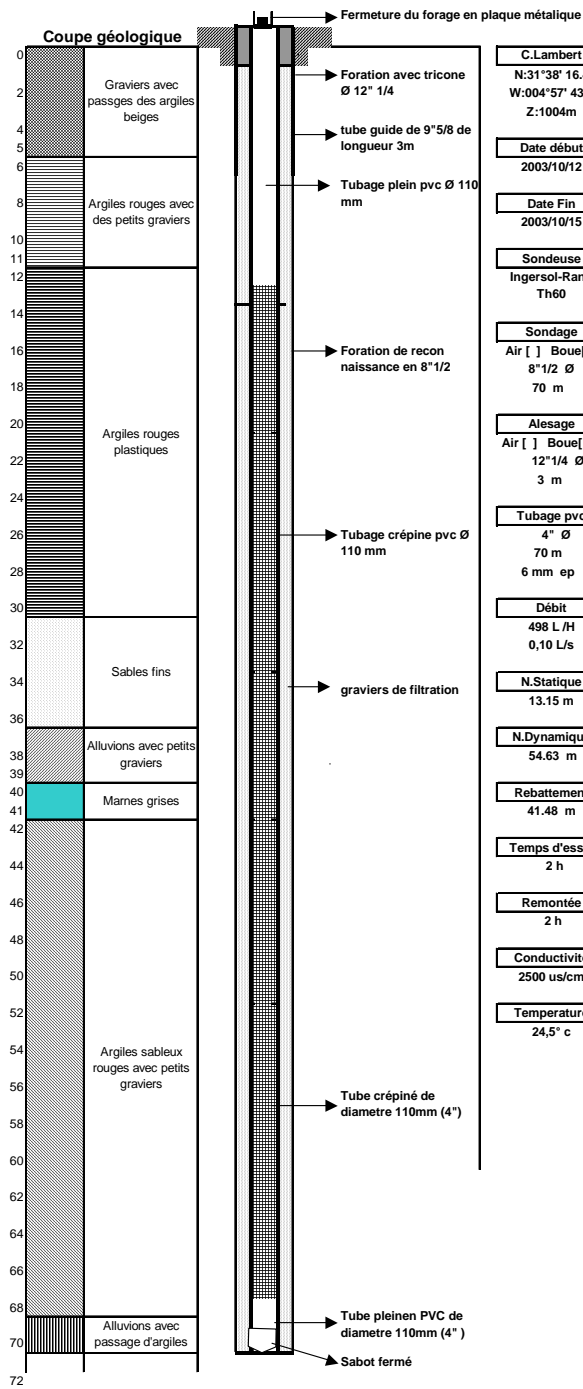


The Development Study on Rural Community Development Project  
in Semi-Arid Atlas Regions with Khetarra Rehabilitation  
in the Kingdom of Morocco

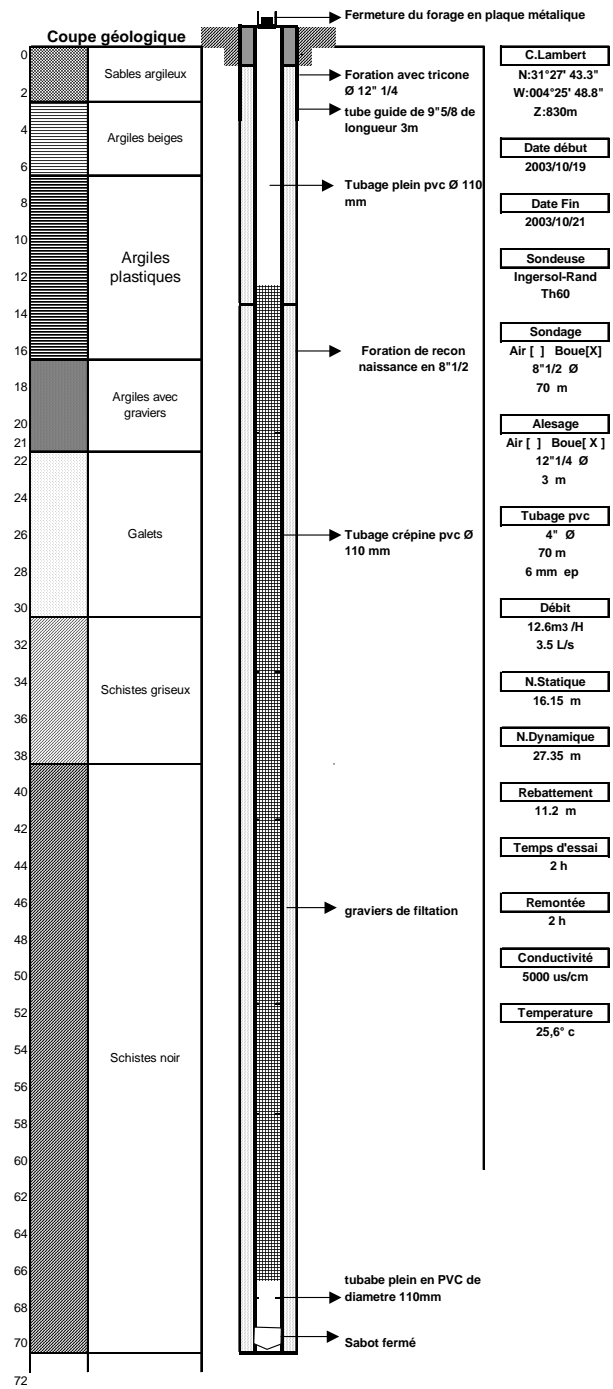
Japan International Cooperation Agency

Figure A.3.5 (6)  
Secular Fluctuation of Groundwater Level  
(Mobil Average of 12 months)

### Sondage Tizougarhine TS (B-1)



### Sondage Hannabou HS (B-2)



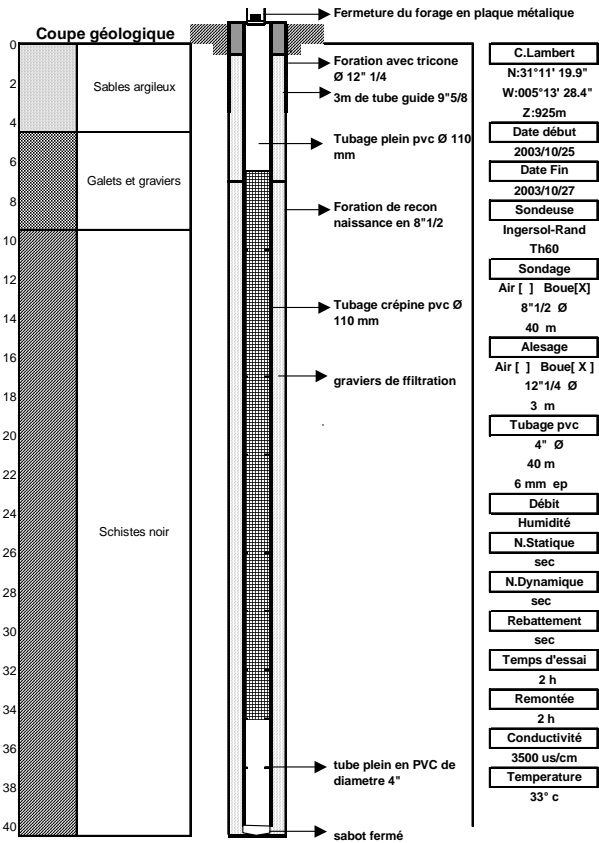
The Development Study on Rural Community Development Project  
in Semi-Arid Atlas Regions with Khettara Rehabilitation  
in the Kingdom of Morocco

Japan International Cooperation Agency

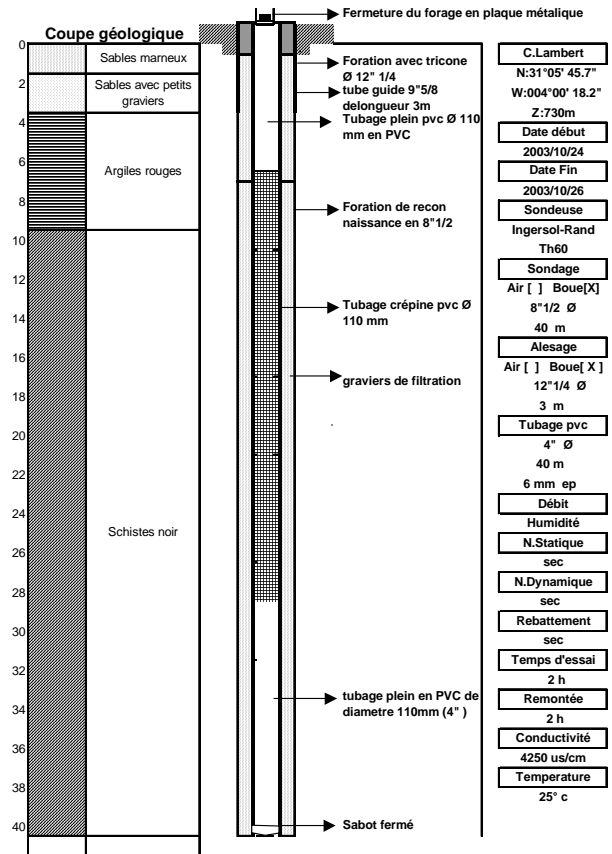
Figure A.4.1 (1)

Drilling Log - 1

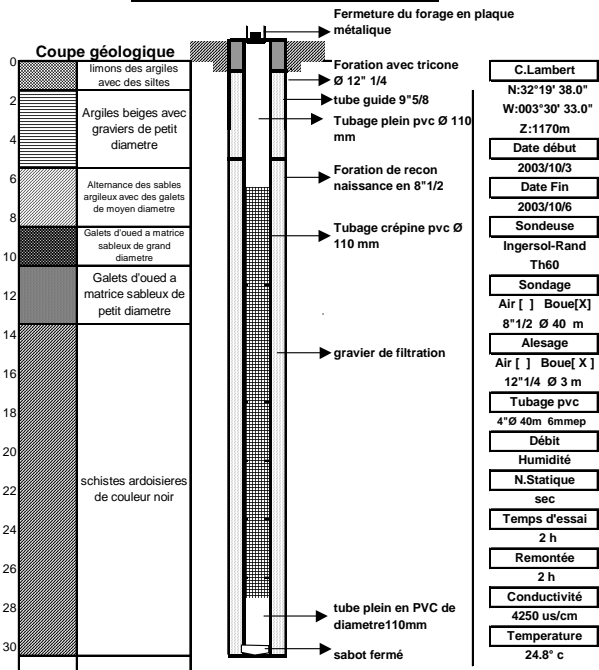
**Sondage Merzouga MS (B-3)**



**Sondage Alnif AS (B-4)**



**Sondage Beni-Tadgit BS (B-5)**



The Development Study on Rural Community Development Project  
in Semi-Arid Atlas Regions with Khetarra Rehabilitation  
in the Kingdom of Morocco

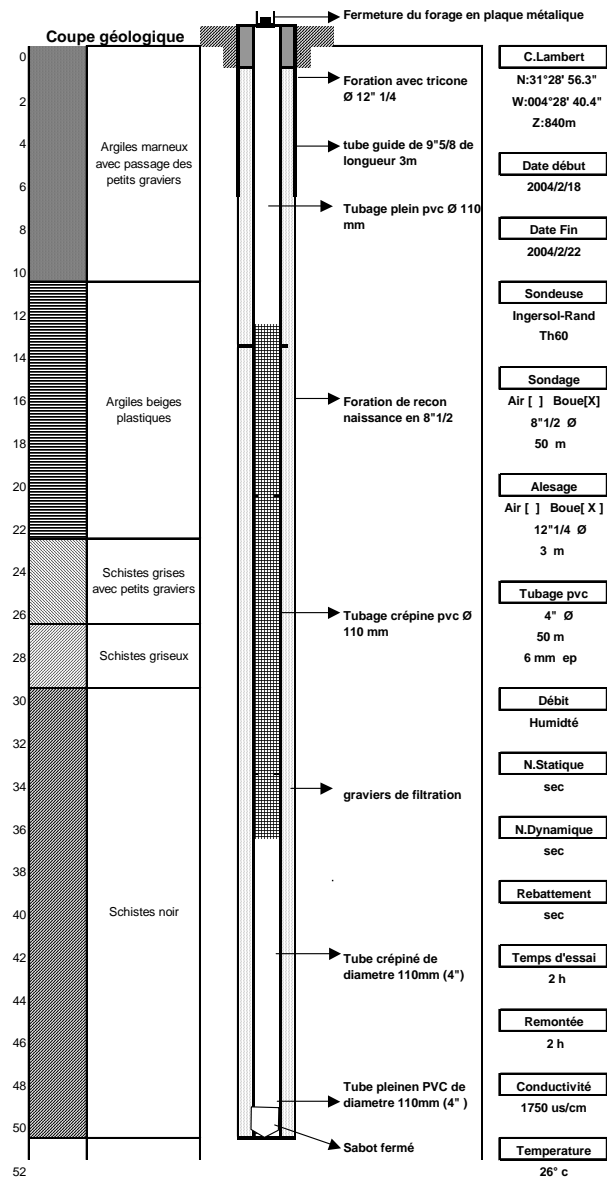
Japan International Cooperation Agency

Figure A.4.1 (2)

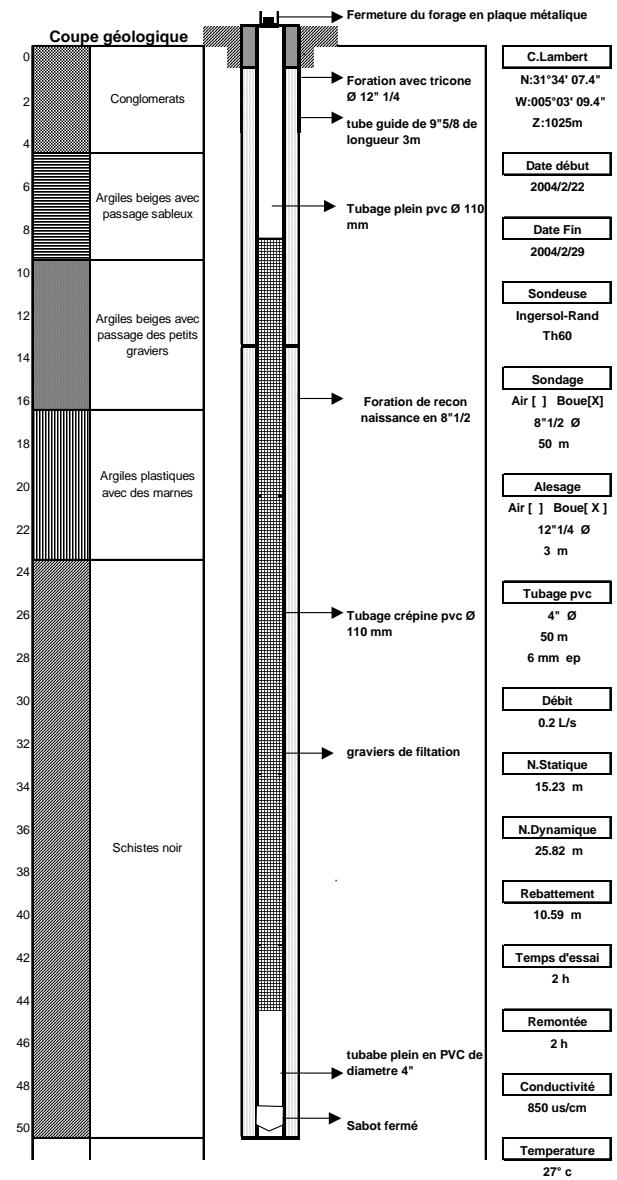
Drilling Log - 2



**Sondage Mounkara MKS B-6**



**Sondage AitBenOmar/LaKsiba KSB B-7**



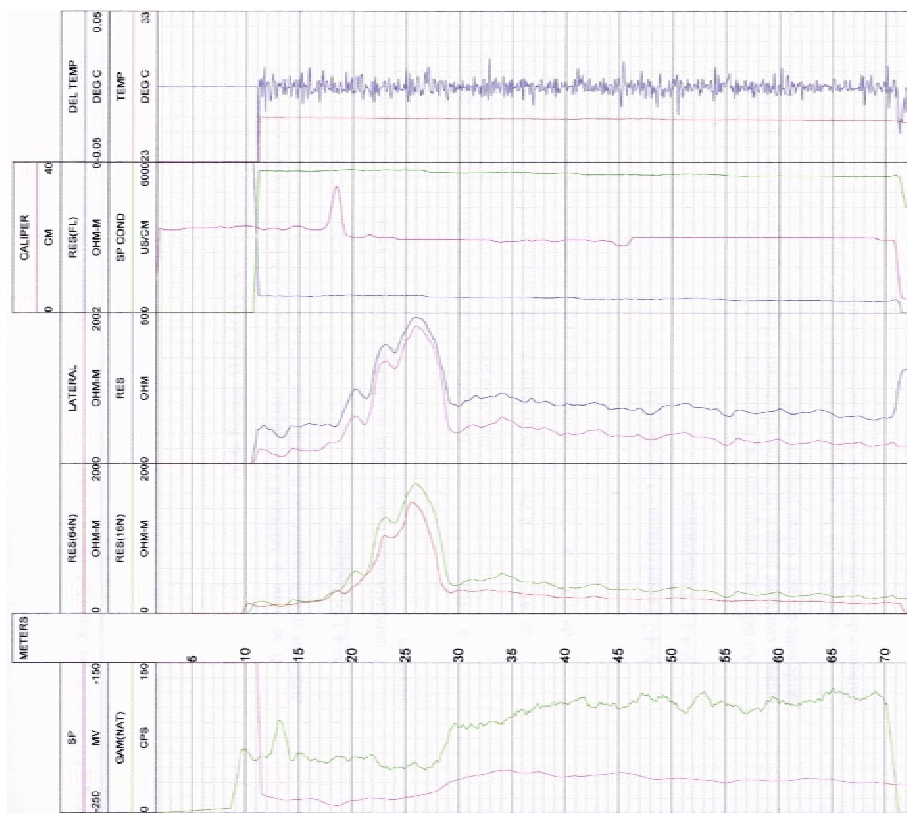
The Development Study on Rural Community Development Project  
in Semi-Arid Atlas Regions with Khetarra Rehabilitation  
in the Kingdom of Morocco

Japan International Cooperation Agency

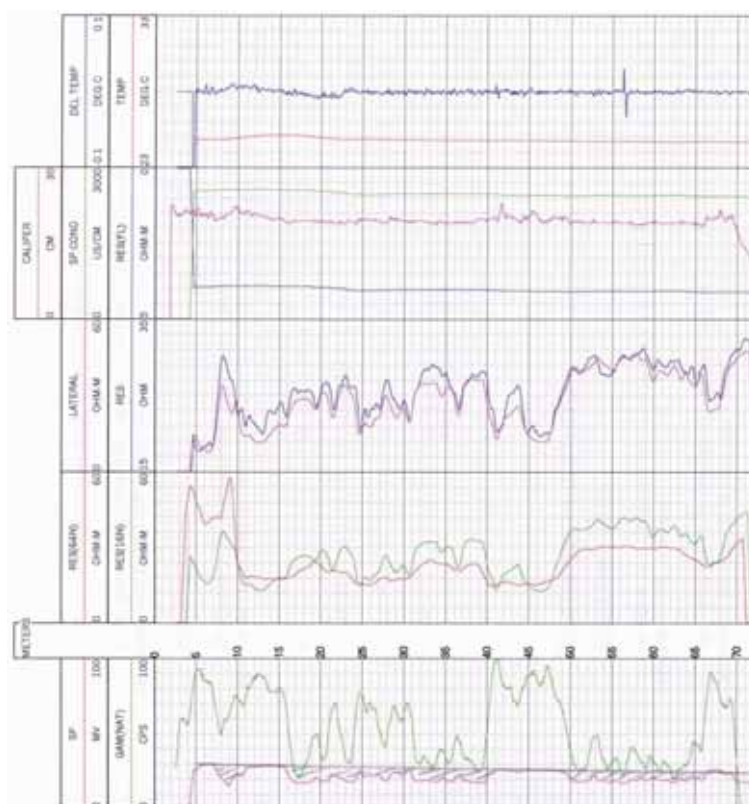
Figure A.4.1 (3)

Drilling Log - 3

**Hannabou HS (B-2)**



**Tizougahine TS (B-1)**



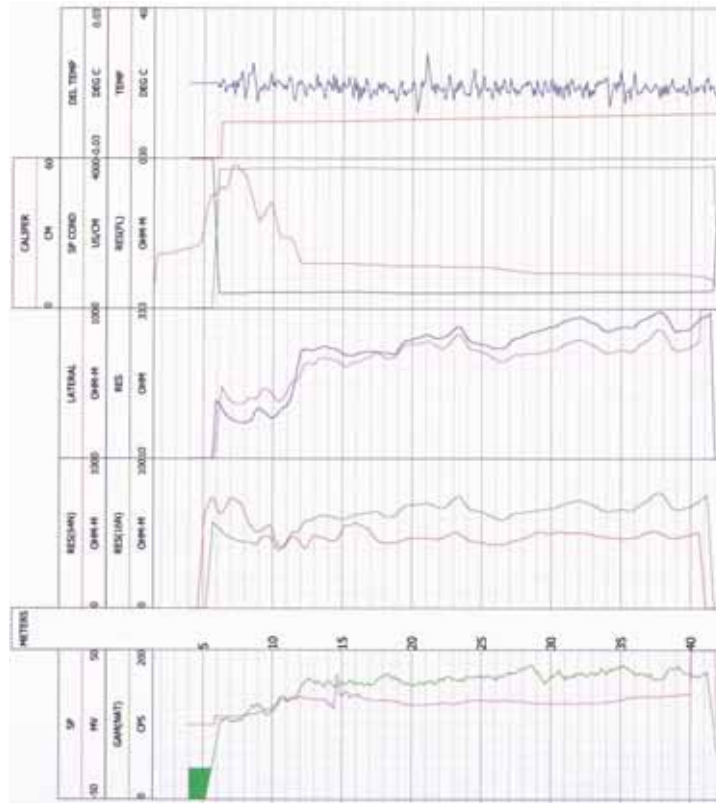
The Development Study on Rural Community Development Project  
in Semi-Arid Atlas Regions with Khetarra Rehabilitation  
in the Kingdom of Morocco

Japan International Cooperation Agency

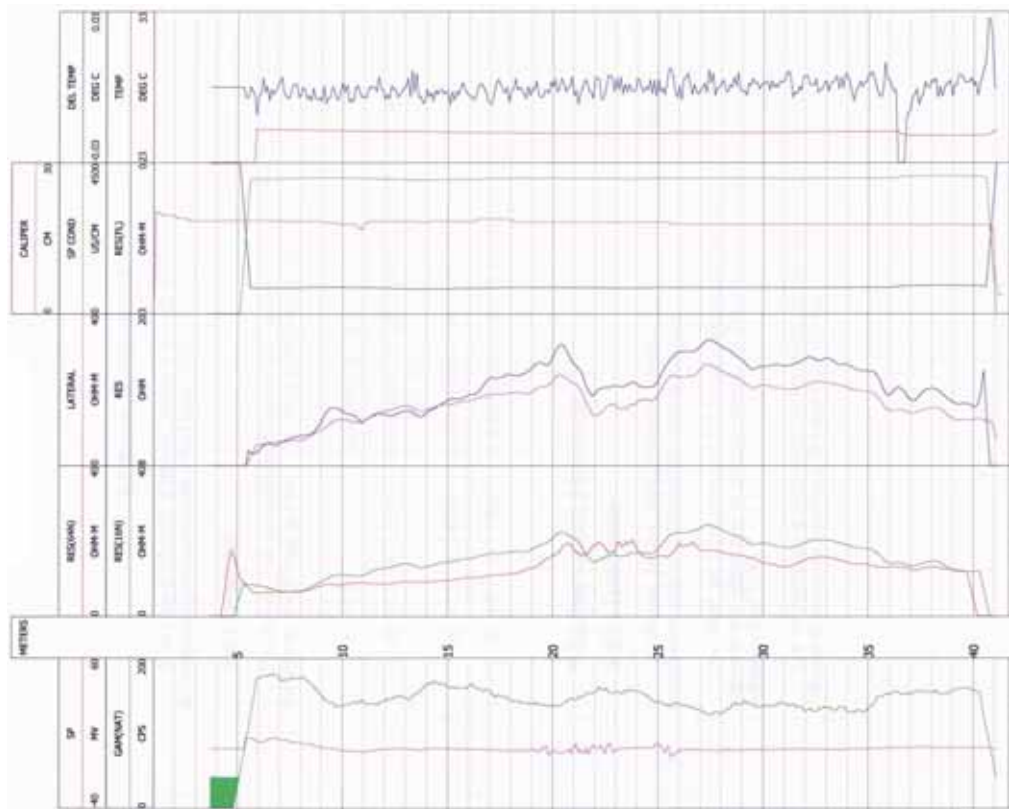
Figure A.4.2 (1)

Result of Borehole  
Geophysical Logging - 1

**Ammar (Alnif) AS (B-4)**



**Merzouga MS (B-3)**



The Development Study on Rural Community Development Project  
in Semi-Arid Atlas Regions with Khettara Rehabilitation  
in the Kingdom of Morocco

Japan International Cooperation Agency

Figure A.4.2 (2)

Result of Borehole  
Geophysical Logging - 2