

**The State Agency on Architecture and Construction (SAAC)
The State Service of Geodesy and Cartography (SSGC)
The Kyrgyz Republic**

Japan International Cooperation Agency (JICA)

**THE STUDY ON
INTEGRATED DEVELOPMENT PLAN
OF ISSYK-KUL ZONE
IN THE KYRGYZ REPUBLIC**

**FINAL REPORT
GIS MAP SERIES**

February 2006

**KRI International Corporation
Nippon Koei Co., Ltd.
Aero Asahi Corporation**



Kyrgyz Research Institute on
Architecture and Town Building



Government of the Kyrgyz Republic
State Commission on Architecture and
Construction



Japanese International
Cooperation Agency

**THE STUDY ON
INTEGRATED DEVELOPMENT PLAN
OF ISSYK-KUL ZONE
IN THE KYRGYZ REPUBLIC**

**FINAL REPORT
GIS MAP SERIES**

February 2006

**KRI International Corporation
Nippon Koei Co., Ltd.
Aero Asahi Corporation**

**THE STUDY ON
INTEGRATED DEVELOPMENT PLAN
OF ISSYK-KUL ZONE
IN THE KYRGYZ REPUBLIC**

FINAL REPORT

FEBRUARY 2006

- VOLUME 1: FINAL REPORT SUMMARY**
- VOLUME 2: FINAL REPORT MAIN REPORT**
- VOLUME 3: FINAL REPORT SECTOR REPORT**
- VOLUME 4: FINAL REPORT GIS MAP SERIES**

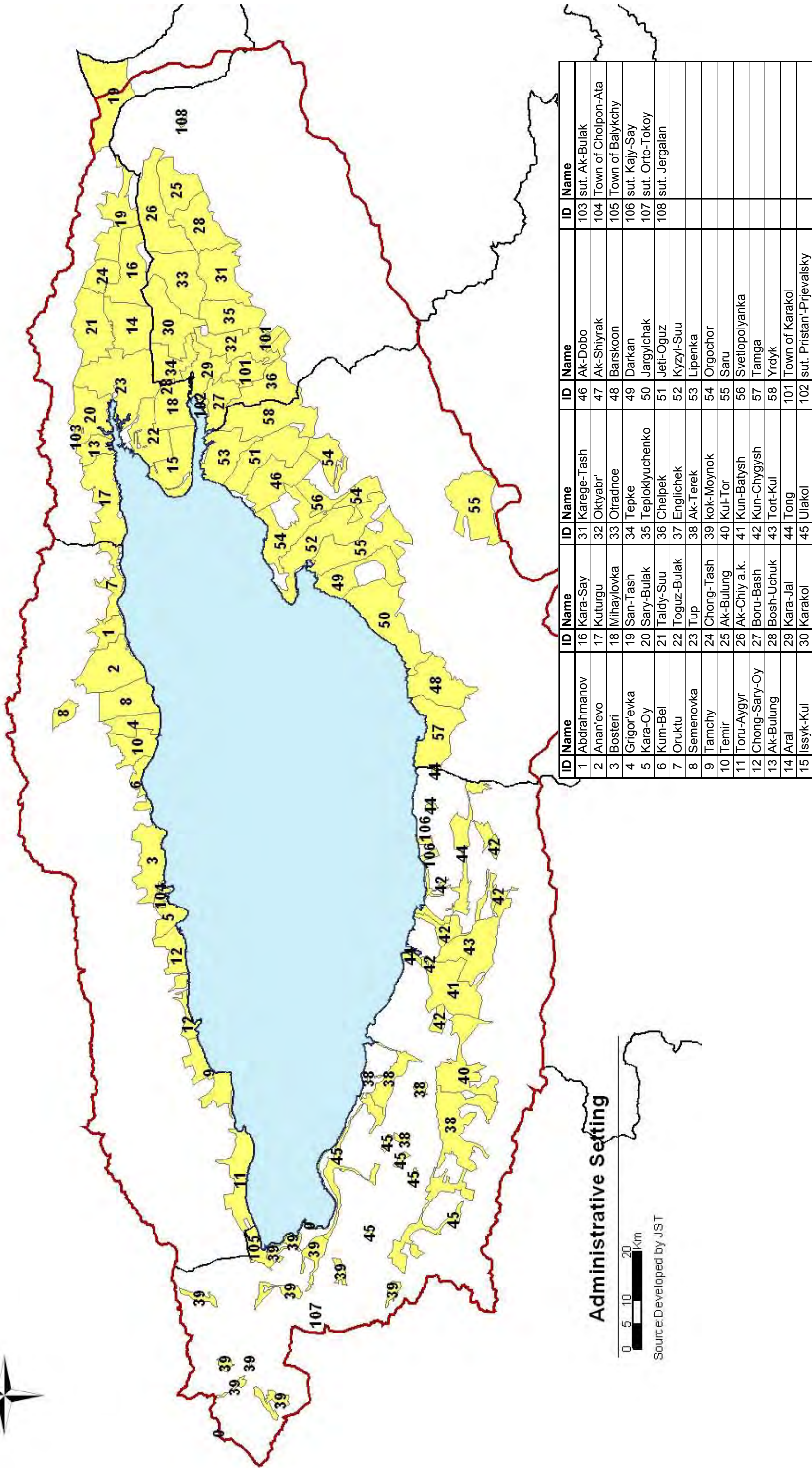
Currency Equivalents

US\$1.00 = 42 Kyrgyz Soms
As of mid-2004

Unless otherwise specified

Contents

1. Administrative Setting
2. Land Ownership
3. Population Density
4. Hazardous area/Seismic area
5. Existing Land Use
6. Snow slide
7. Soil Erosion
8. Archeological Sites
9. Proposed regulated area
10. Distribution of Population
11. Proposed Land Use Zoning
12. Tourism Development
13. Spatial Development Concept

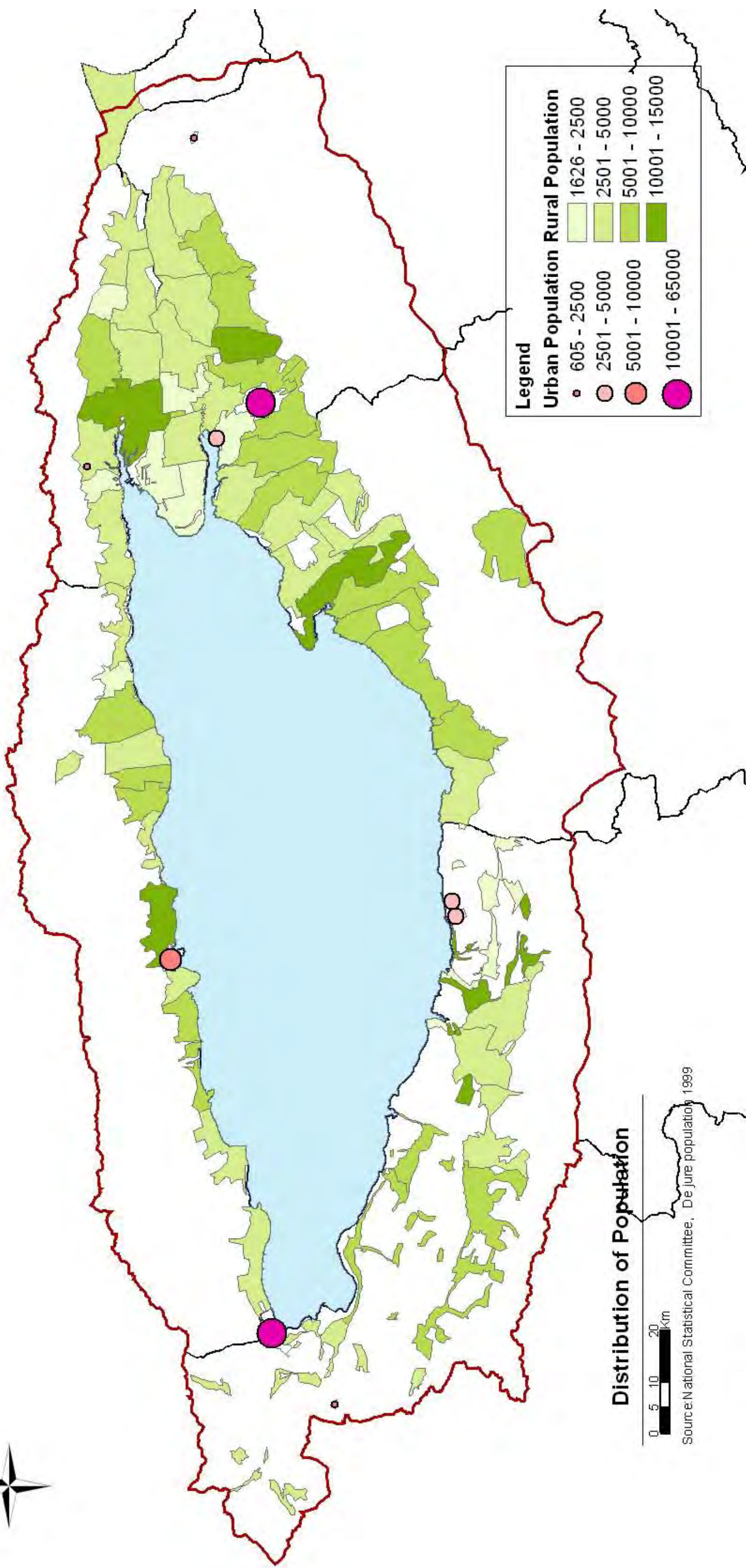


Administrative Setting



Source: Developed by JST

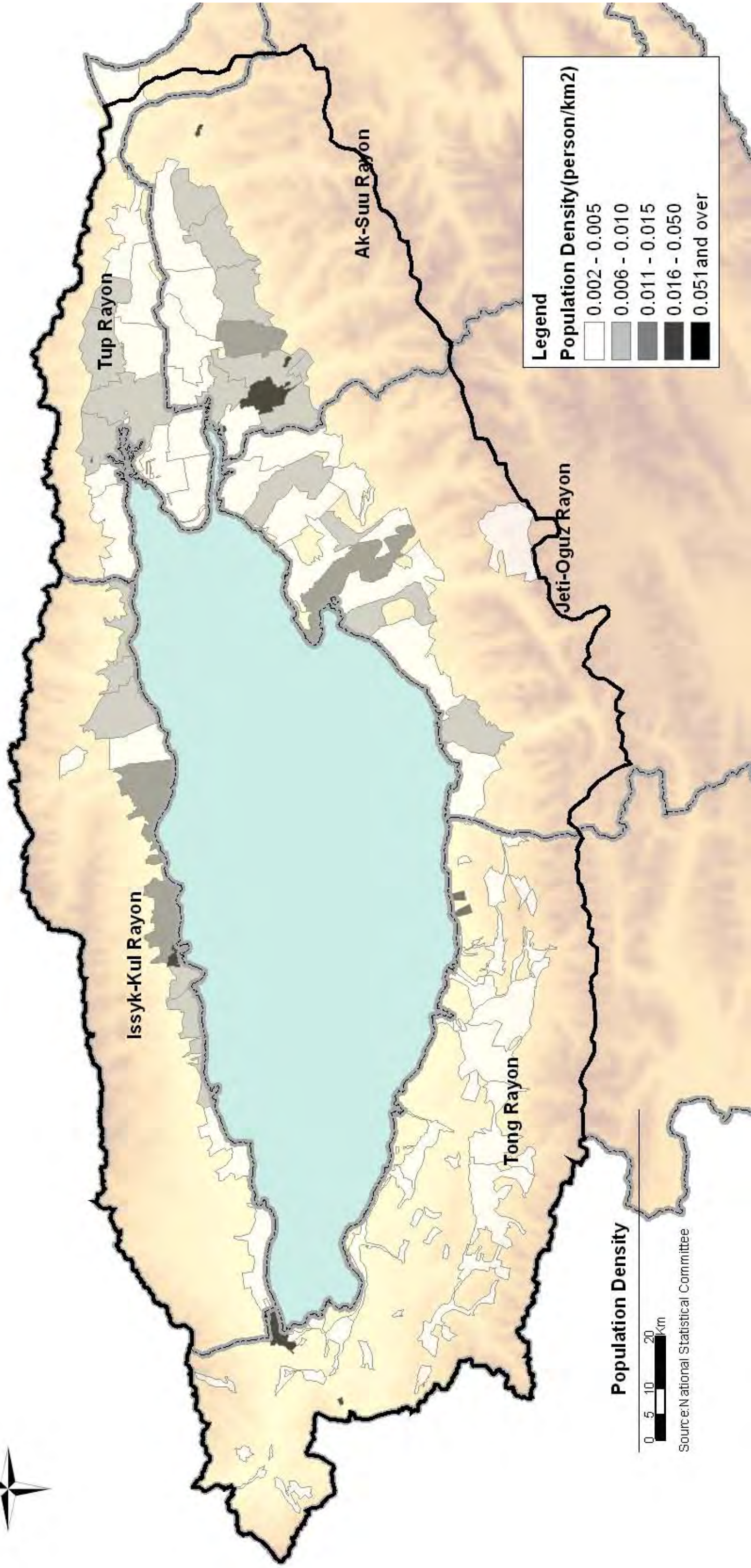
ID	Name	ID	Name	ID	Name	ID	Name
1	Abdrahmanov	16	Kara-Say	31	Karege-Tash	46	Ak-Dobo
2	Anan'ev	17	Kuturgu	32	Oktyabr'	47	Ak-Shiyrak
3	Bosteri	18	Mihaylovka	33	Otradnoe	48	Barskoon
4	Grigor'evka	19	San-Tash	34	Tepke	49	Darkan
5	Kara-Oy	20	Sary-Bulak	35	Teploklyuchenko	50	Jargylchak
6	Kum-Bel	21	Taldy-Suu	36	Chelpek	51	Jeti-Oguz
7	Oruktu	22	Toguz-Bulak	37	Englichek	52	Kyzyl-Suu
8	Semenovka	23	Tup	38	Ak-Terek	53	Lipenka
9	Tamchy	24	Chong-Tash	39	kok-Moynok	54	Orgochor
10	Temir	25	Ak-Bulung	40	Kul-Tor	55	Saru
11	Toru-Aygyr	26	Ak-Chiy a.k.	41	Kun-Batysh	56	Svetlopolyanka
12	Chong-Sary-Oy	27	Boru-Bash	42	Kun-Chygysh	57	Tamga
13	Ak-Bulung	28	Bosh-Uchuk	43	Tort-Kul	58	Yrдыk
14	Aral	29	Kara-Jal	44	Tong	101	Town of Karakol
15	Issyk-Kul	30	Karakol	45	Ulakol	102	sut. Pristan'-Prjevalsky
						103	sut. Ak-Bulak
						104	Town of Cholpon-Ata
						105	Town of Balykchy
						106	sut. Kajy-Say
						107	sut. Orto-Tokoy
						108	sut. Jergalan



2 Distribution of Population

The study on Integrated Development Plan of Issyk-kul Zone in the Kyrgyz Republic
KRI International Corporation / Nippon Koei Co., Ltd. / Aero Asahi Corporation

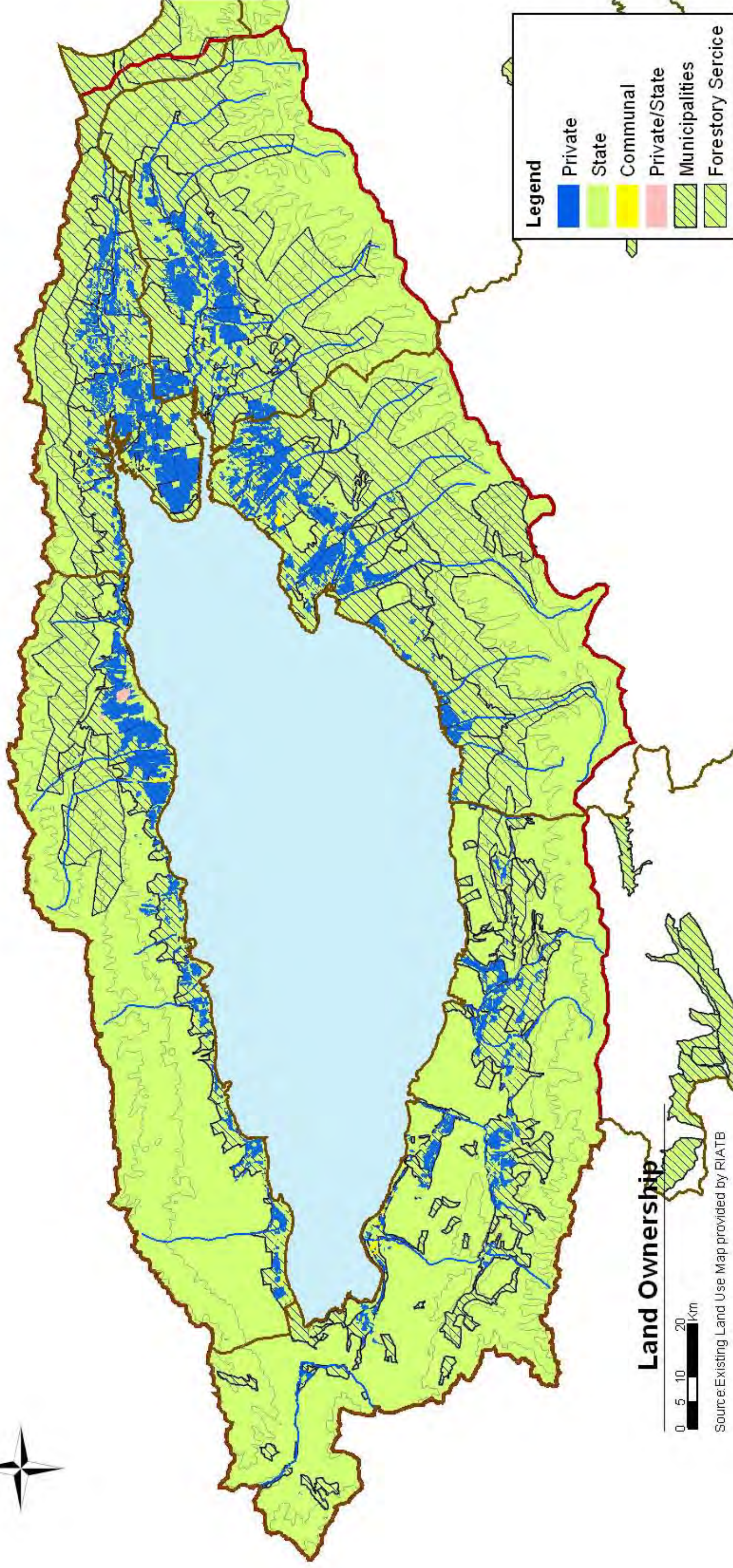




3 Population Density

The study on Integrated Development Plan of Issyk-kul Zone in the Kyrgyz Republic
KRI International Corporation / Nippon Koei Co., Ltd. / Aero Asahi Corporation





Legend

- Private (Blue)
- State (Light Green)
- Communal (Yellow)
- Private/State (Pink)
- Municipalities (Diagonal Hatching)
- Forestry Service (Cross-hatching)

Land Ownership

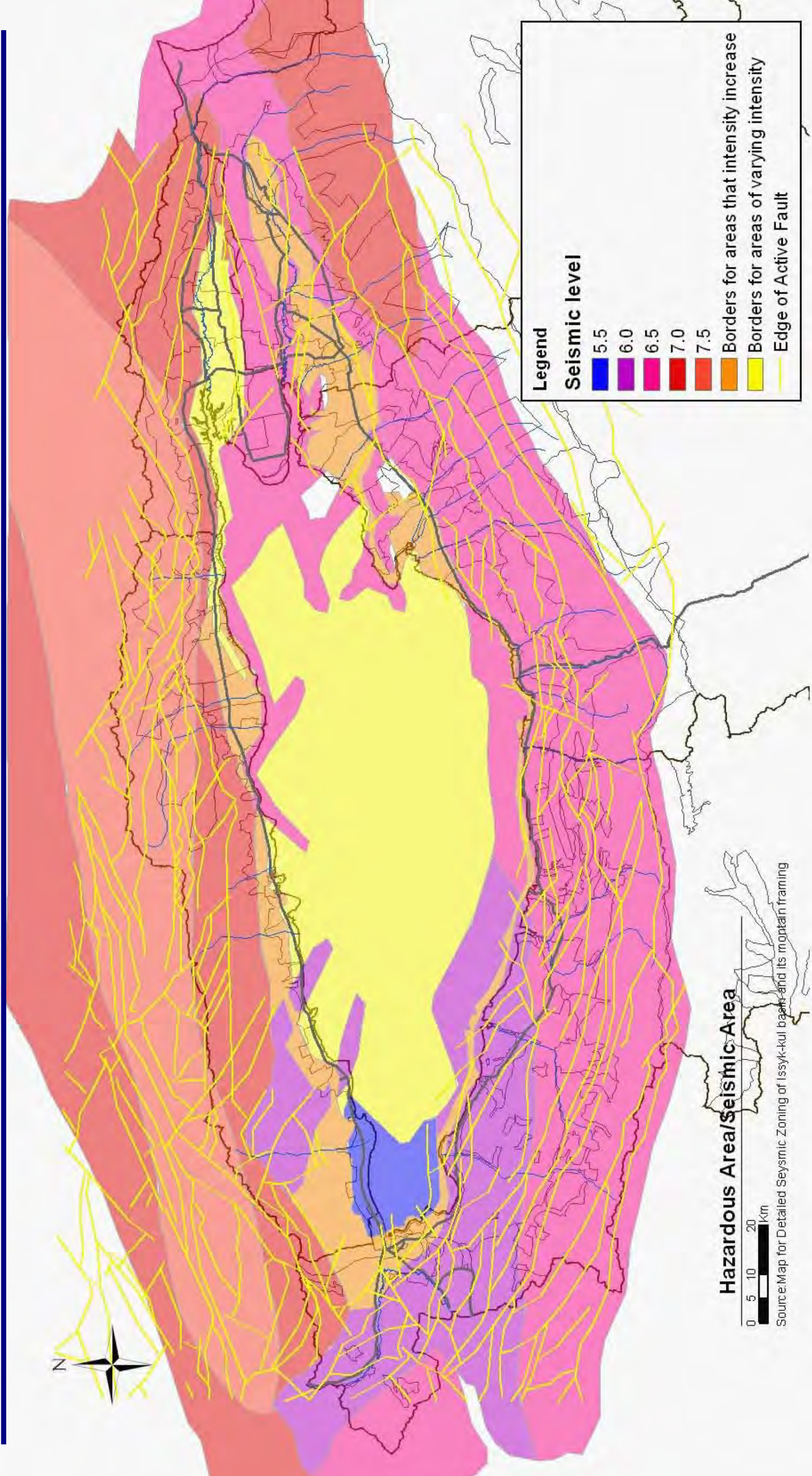
0 5 10 20 Km

Source: Existing Land Use Map provided by RIATB

4 Land Ownership

The study on Integrated Development Plan of Issyk-kul Zone in the Kyrgyz Republic
KRI International Corporation / Nippon Koei Co., Ltd. / Aero Asahi Corporation

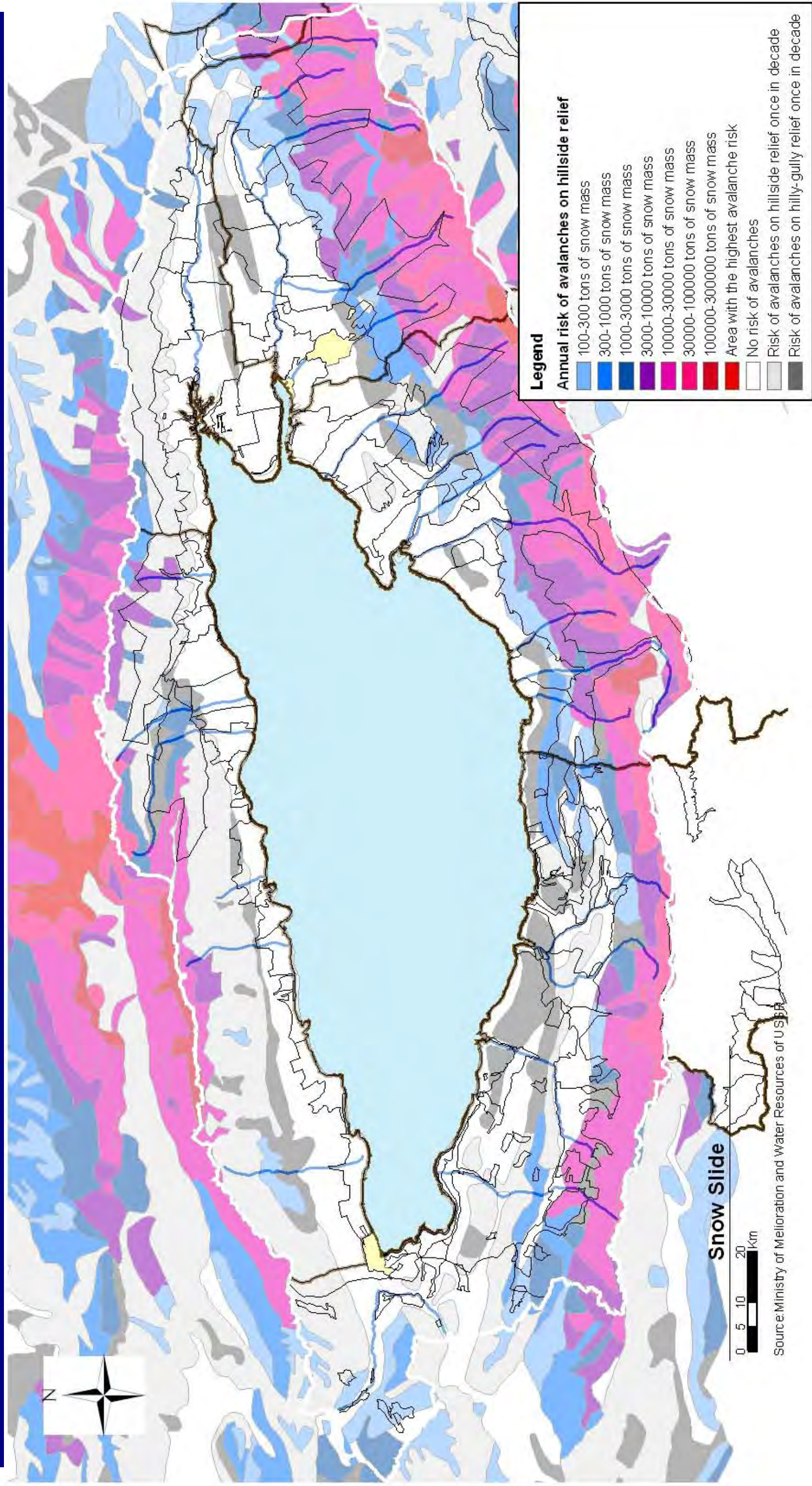


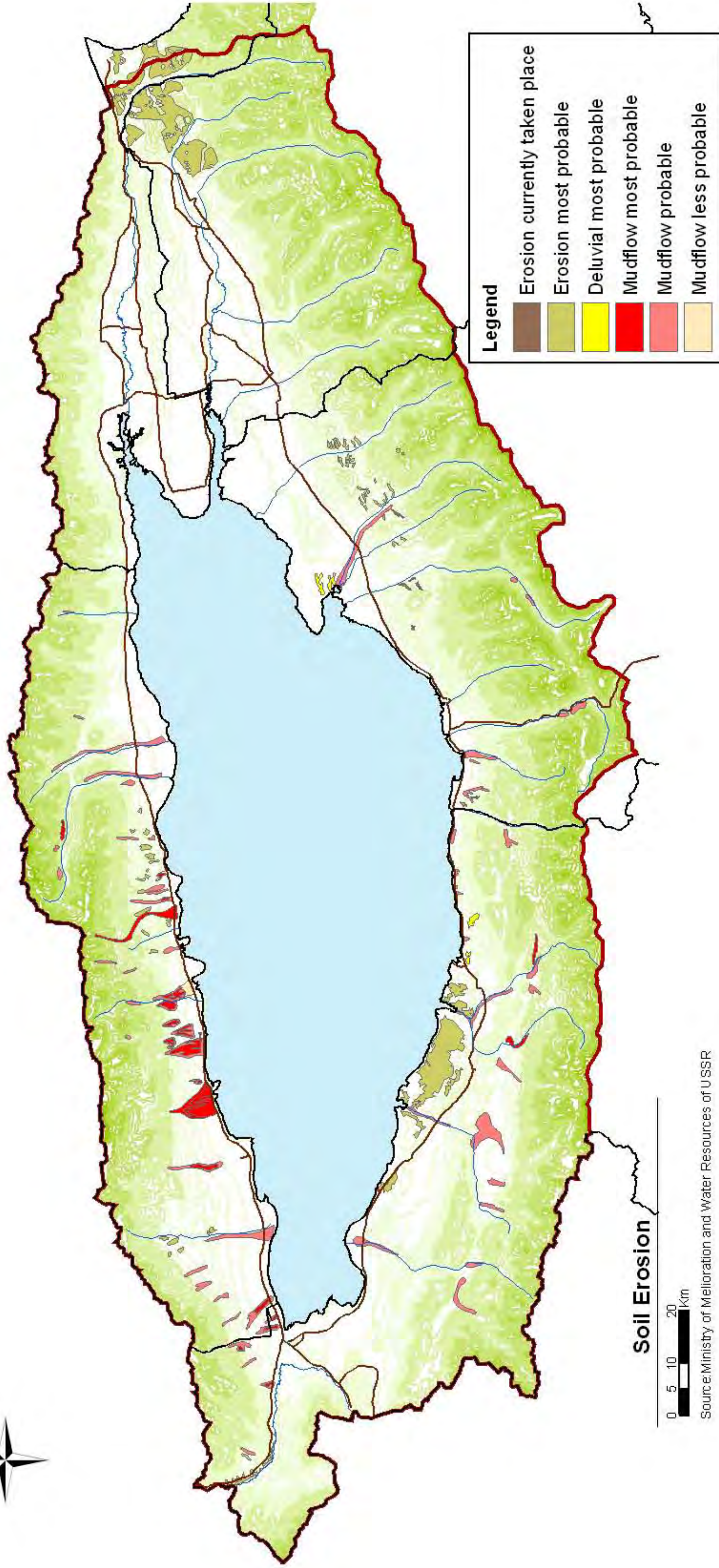


5 Hazardous Area/Seismic Area

The study on Integrated Development Plan of Issyk-kul Zone in the Kyrgyz Republic
 KRI International Corporation / Nippon Koei Co., Ltd. / Aero Asahi Corporation



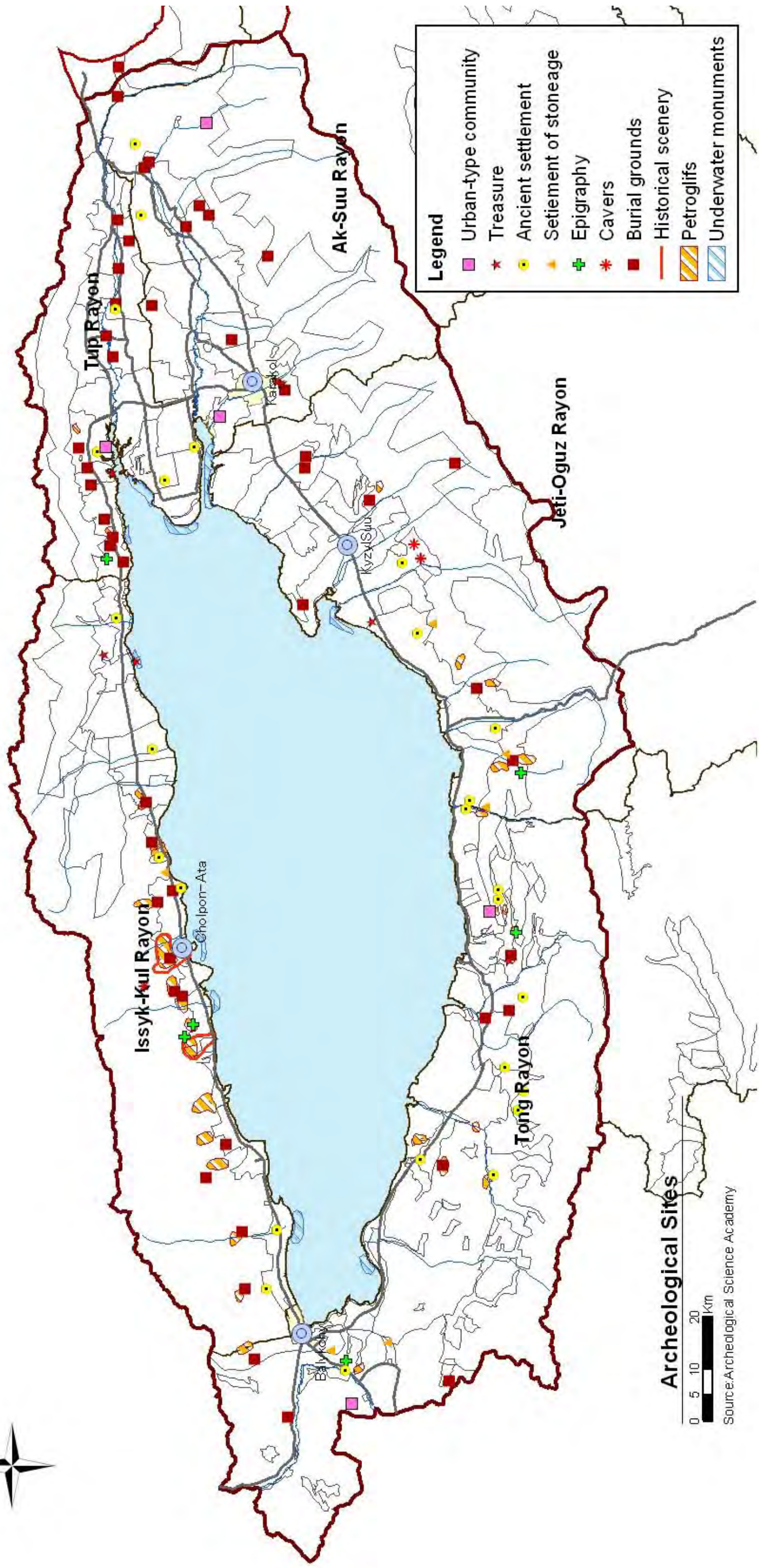




7 Soil Erosion

The study on Integrated Development Plan of Issyk-kul Zone in the Kyrgyz Republic
KRI International Corporation/Nippon Koei Co., Ltd. / Aero Asahi Corporation

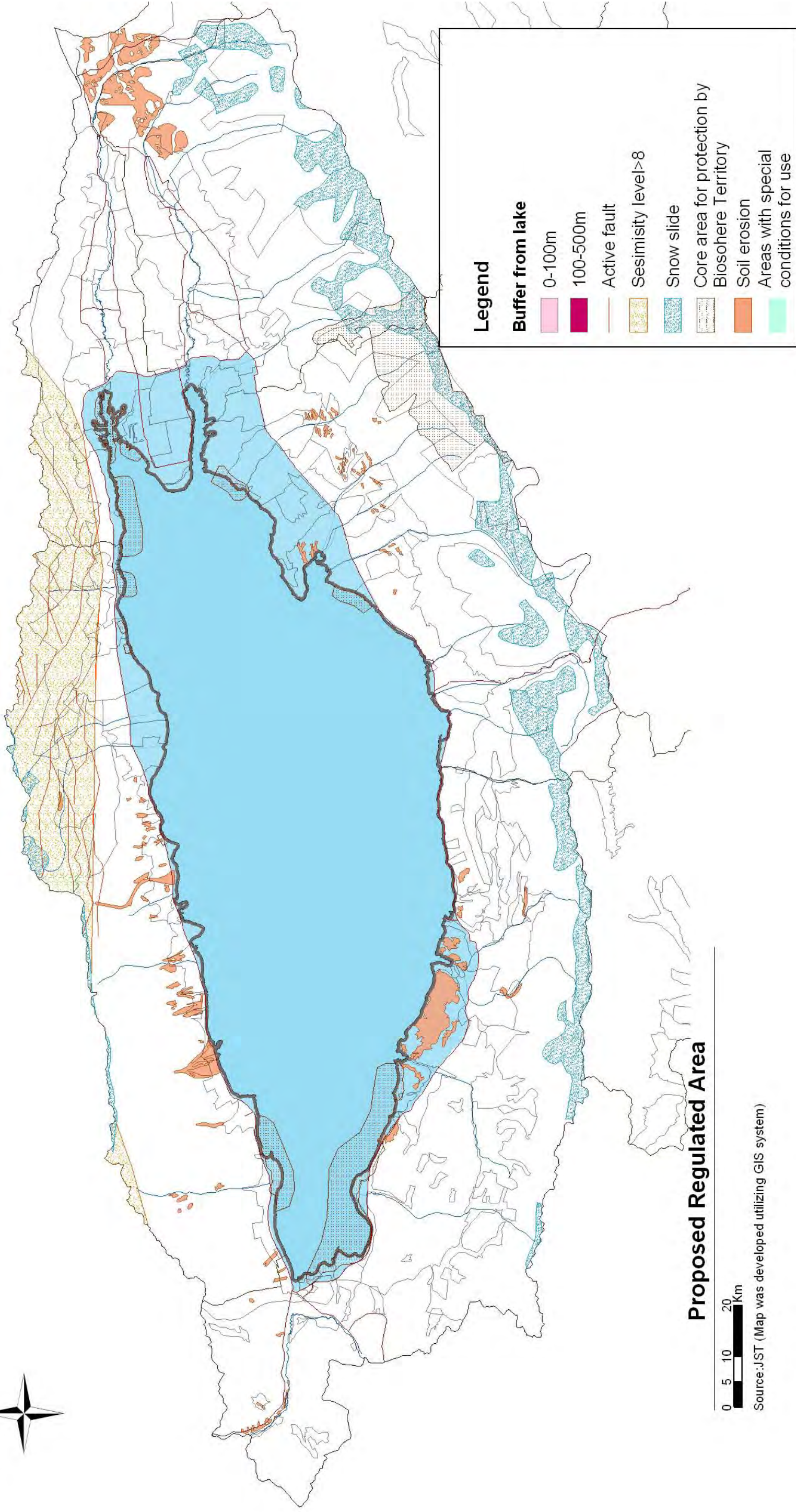




Legend

	Urban-type community
	Treasure
	Ancient settlement
	Settlement of stoneage
	Epigraphy
	Cavers
	Burial grounds
	Historical scenery
	Petroglifs
	Underwater monuments

Archeological Sites
 0 5 10 20 Km
 Source: Archeological Science Academy



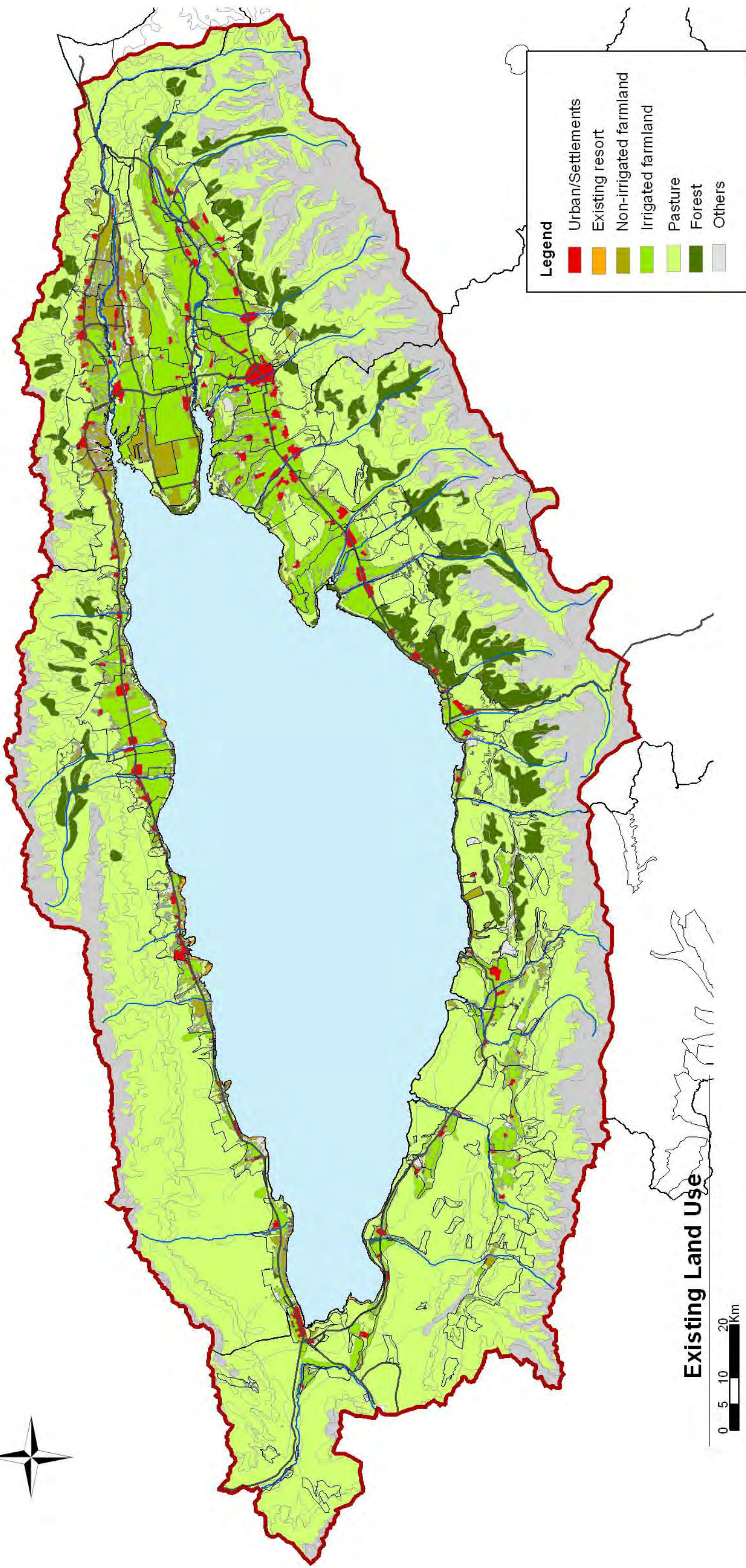
Legend

- Buffer from lake**
- 0-100m
- 100-500m
- Active fault
- Sesimicity level >8
- Snow slide
- Core area for protection by Biosphere Territory
- Soil erosion
- Areas with special conditions for use

Proposed Regulated Area



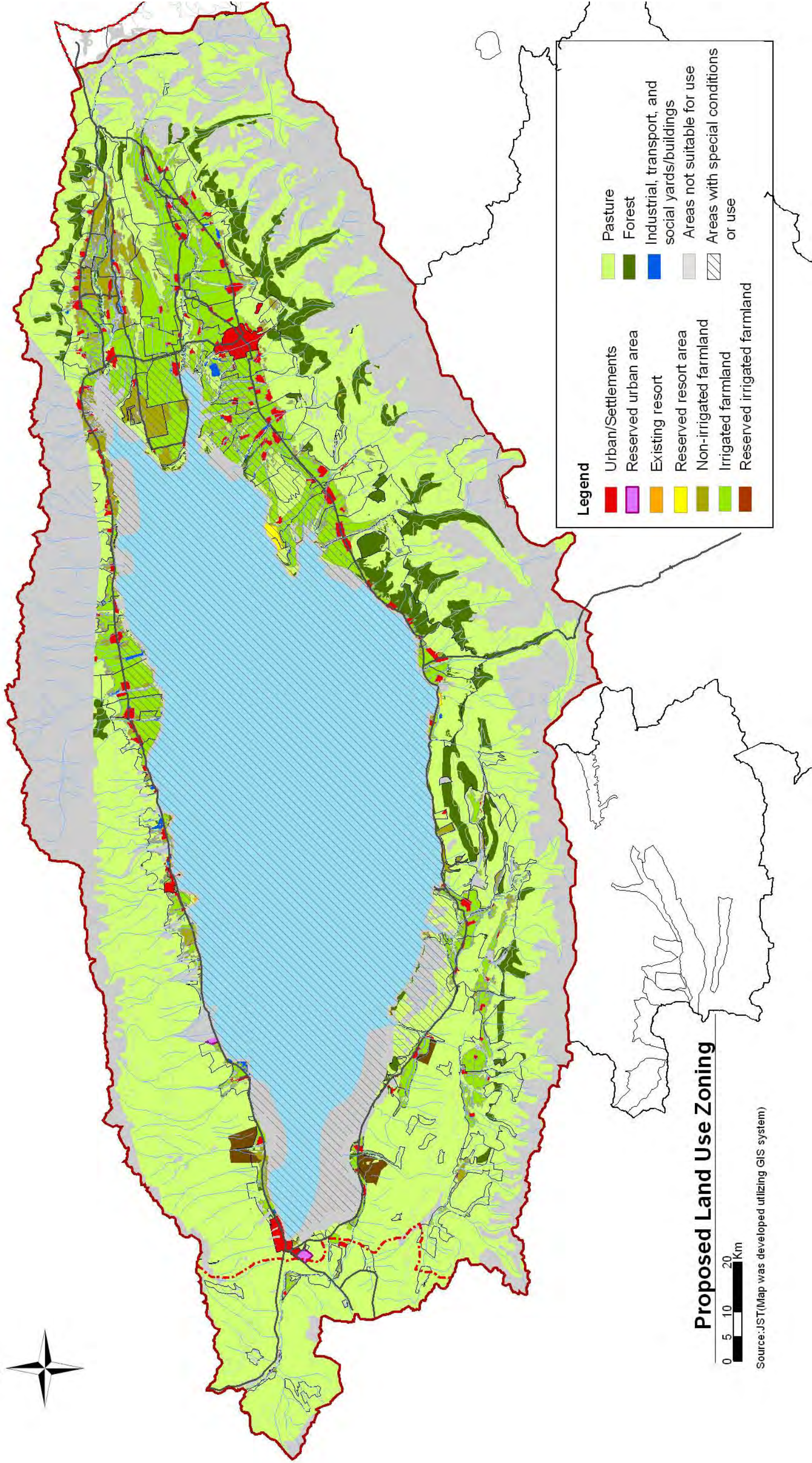
Source: JST (Map was developed utilizing GIS system)



Existing Land Use

0 5 10 20 Km

Source: Developed by JST based on Land Use Survey



Legend

- | | |
|---|---|
| ■ Urban/Settlements | ■ Pasture |
| ■ Reserved urban area | ■ Forest |
| ■ Existing resort | ■ Industrial, transport, and social yards/buildings |
| ■ Reserved resort area | ■ Areas not suitable for use |
| ■ Non-irrigated farmland | ■ Areas with special conditions or use |
| ■ Irrigated farmland | |
| ■ Reserved irrigated farmland | |

Proposed Land Use Zoning

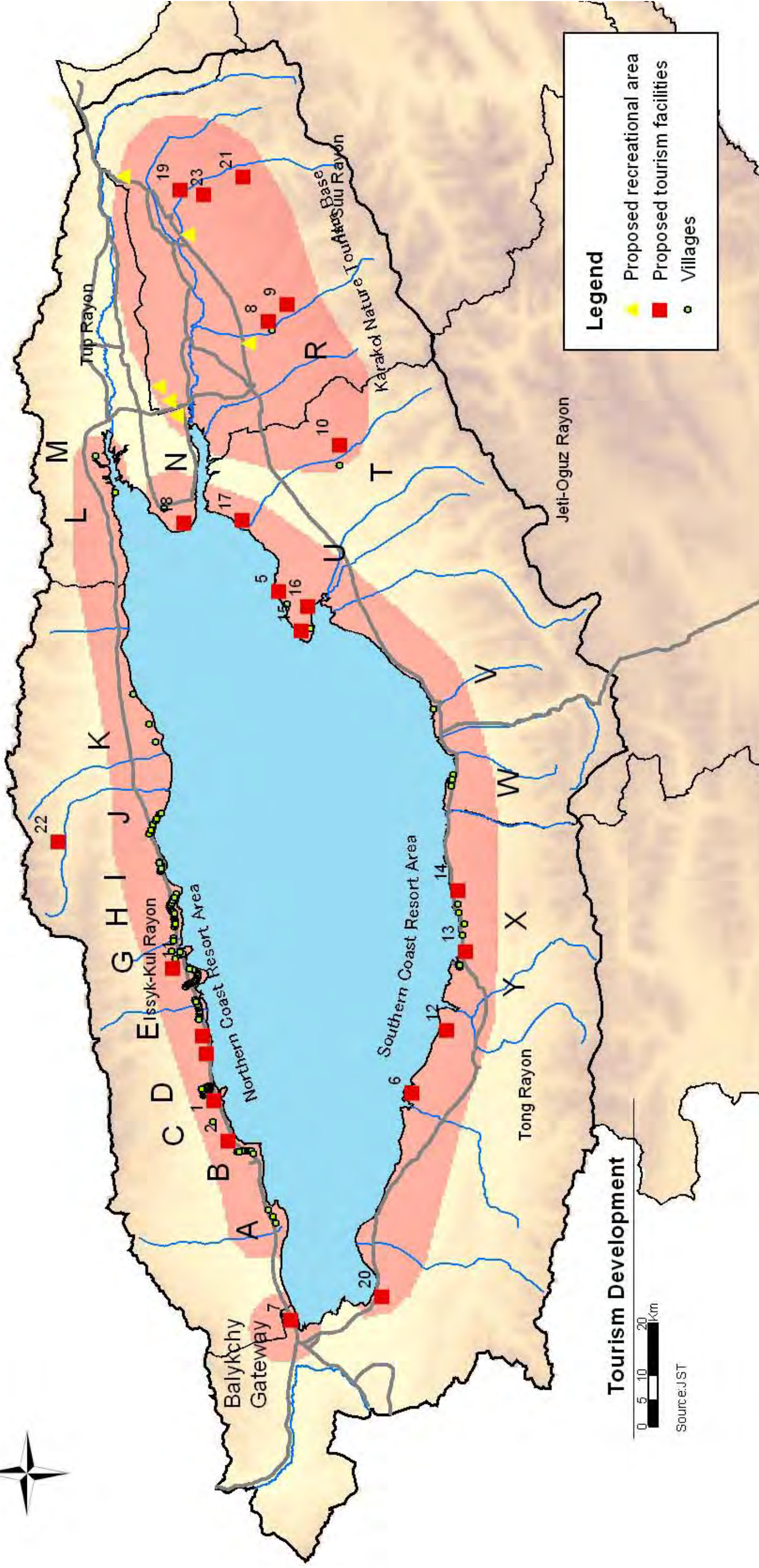


Source: JST (Map was developed utilizing GIS system)

11 Proposed Land Use Zoning

The study on Integrated Development Plan of Issyk-kul Zone in the Kyrgyz Republic
 KRI International Corporation / Nippon Koei Co., Ltd. / Aero Asahi Corporation





Legend

- Proposed recreational area
- Proposed tourism facilities
- Villages

Tourism Development

0 5 10 20 Km

Source: JST

