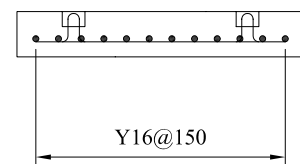
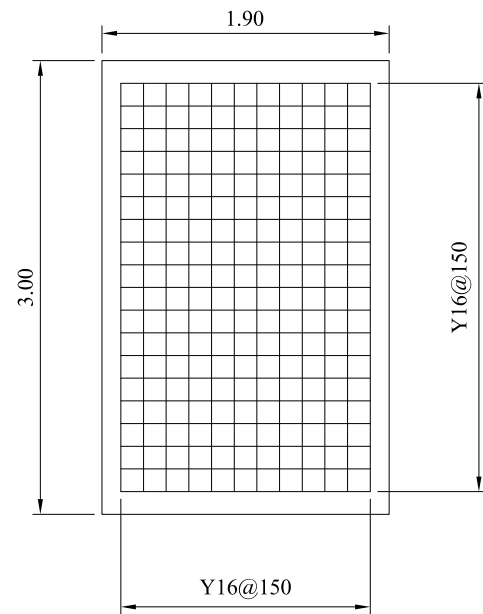
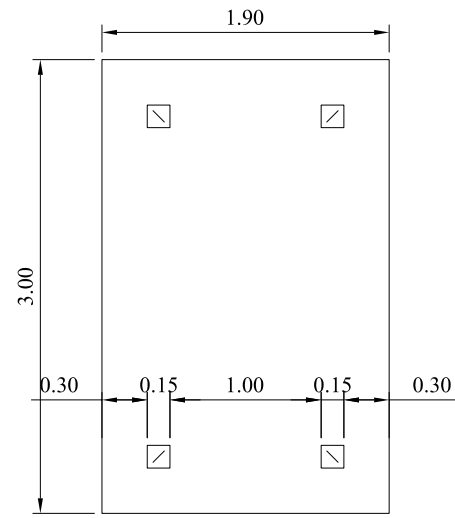
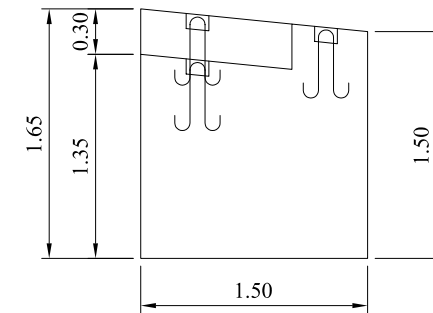
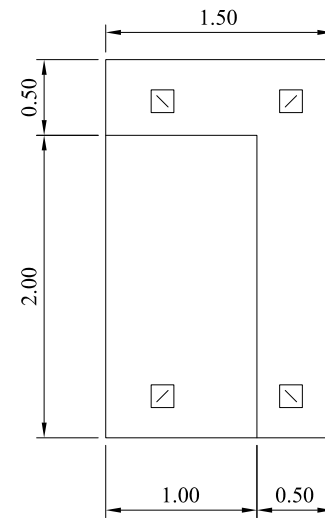
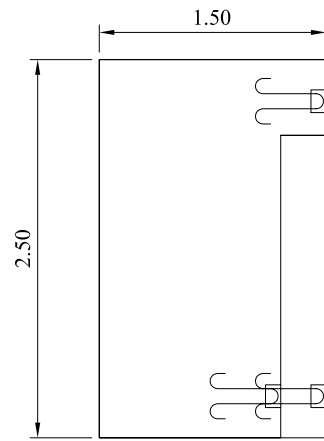


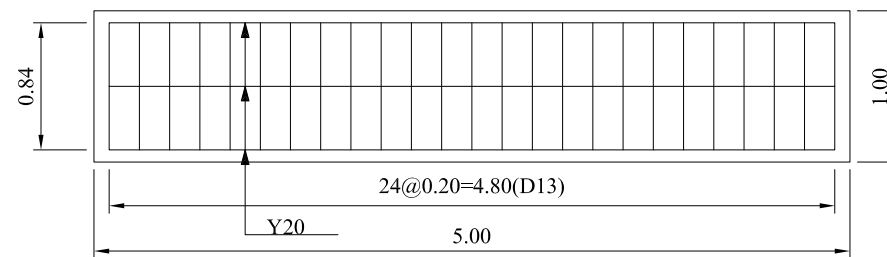
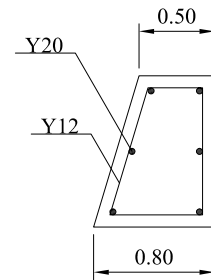
Concrete Block Slab



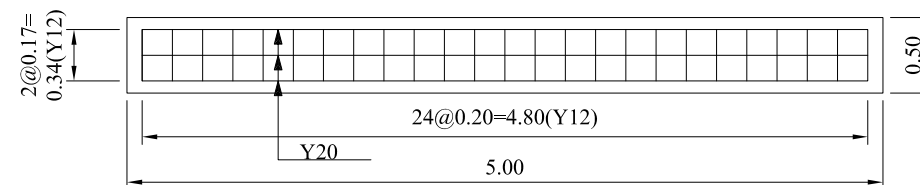
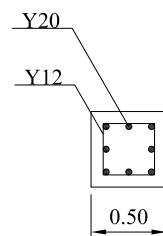
Foot Protection Concrete Block



Concrete Beam (Slipway Side) (L5.0m, B0.5-0.8m, H1.0m)



Concrete Beam Transversal (L5.0m, B0.5m, H0.5m)



NOTE:

1. All dimensions are in meter, unless indicated otherwise.
All elevations are related to MSL.

2. Material shall be as follows:
All Precast concrete blocks tensile strength (28days) 40N/mm²

Precast block sizes and retain arrangement indicated herewith are reference only. The contractor shall design and prepare all the details for the Engineer's Approval.

EMPLOYER:

EXECUTING AGENCY:

Ministry of Fisheries & Aquatic Resources
Ceylon Fishery Harbour Corporation (CFHC)

PROJECT TITLE:

Project for Reconstruction of
Quaywall Structures and CFHC Office Building
at Galle Fishery Harbor
Damaged by Tsunami Disaster

DRAWING TITLE:

Quay Structures
Slipway

Concrete Blocks Detail

DATE:

SCALE:

1/50

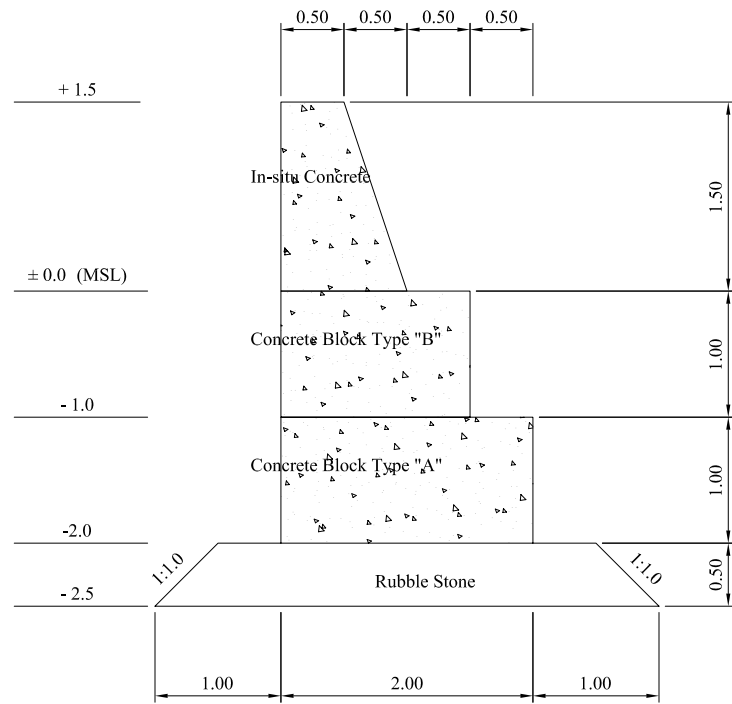
BY:

NO.

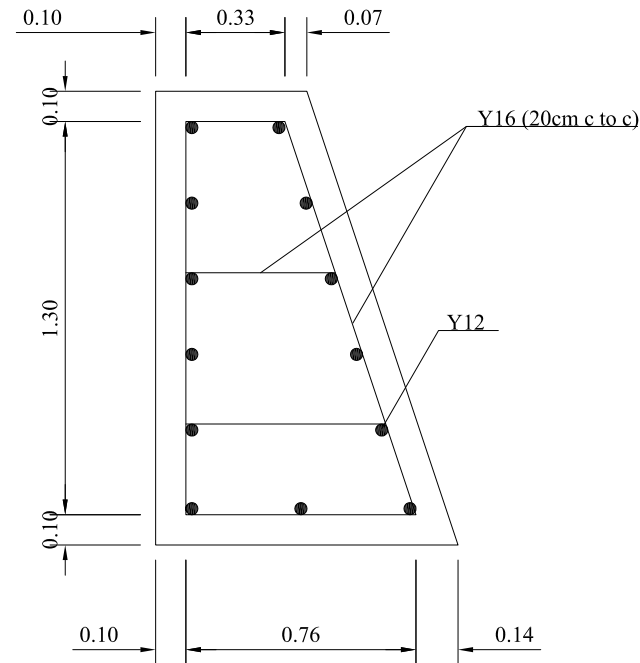
BY:

P/034-Q-203

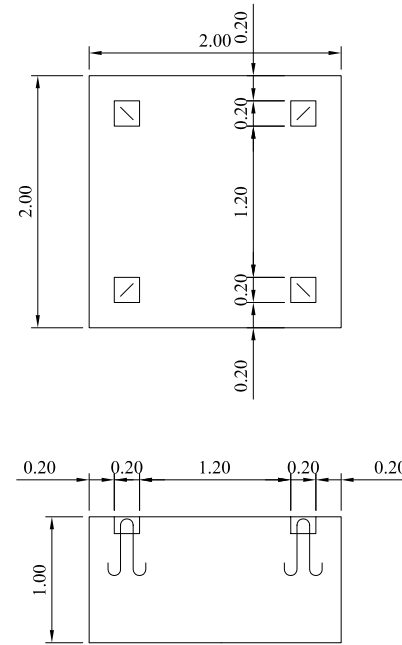
APPROVE BY:



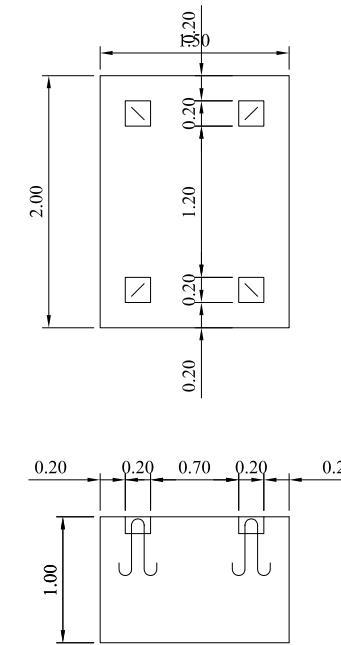
Key Plan



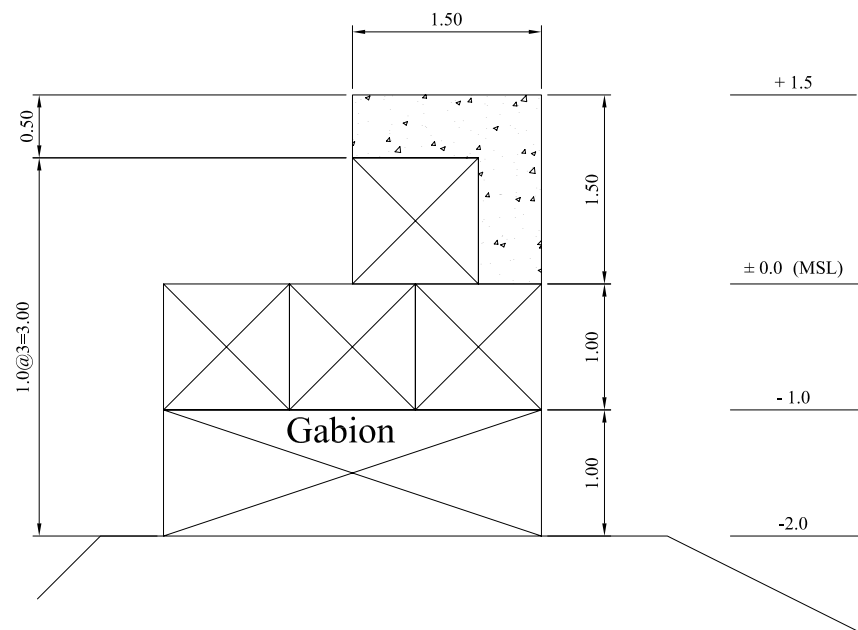
Reinforcement Arrangement
Scale 1:25



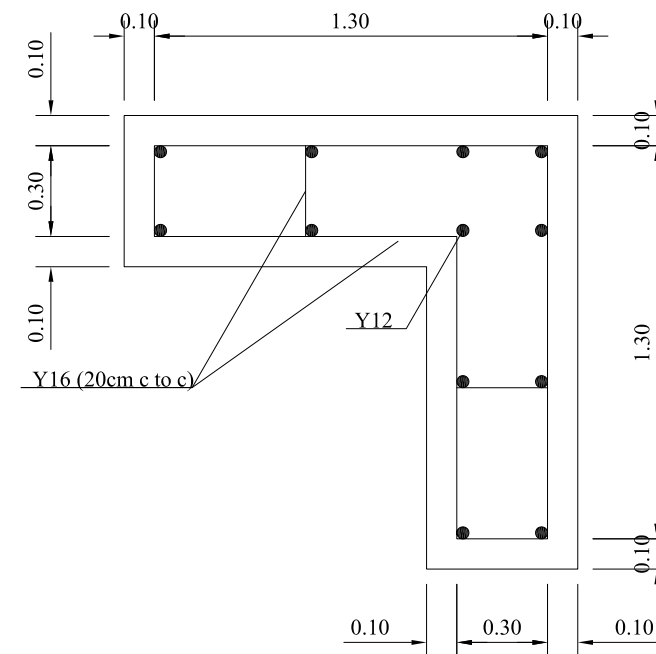
Concrete Block Type "A"



Concrete Block Type "B"



Key Plan



Reinforcement Arrangement
Scale 1:25

NOTE:
Same note with
Dwg. No. P/034-Q-203

EMPLOYER:

EXECUTING AGENCY:

Ministry of Fisheries & Aquatic Resources
Ceylon Fishery Harbour Corporation (CFHC)

PROJECT TITLE:

Project for Reconstruction of
Quaywall Structures and CFHC Office Building
at Galle Fishery Harbor
Damaged by Tsunami Disaster

DRAWING TITLE:

Quay Structures
Retaining Walls

Typical Sections and Detail

DATE:

SCALE:

1/60

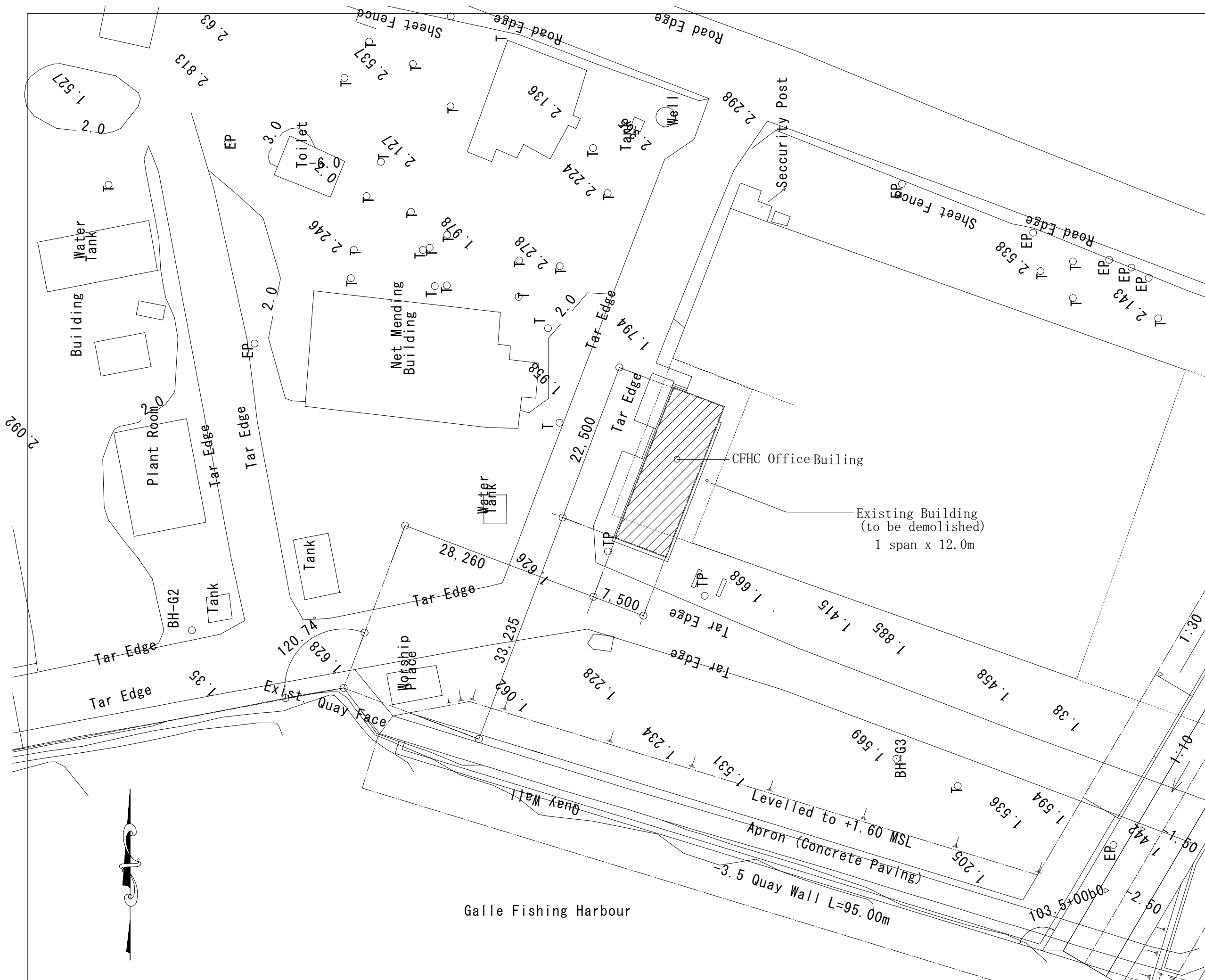
BY:

NO.

BY:

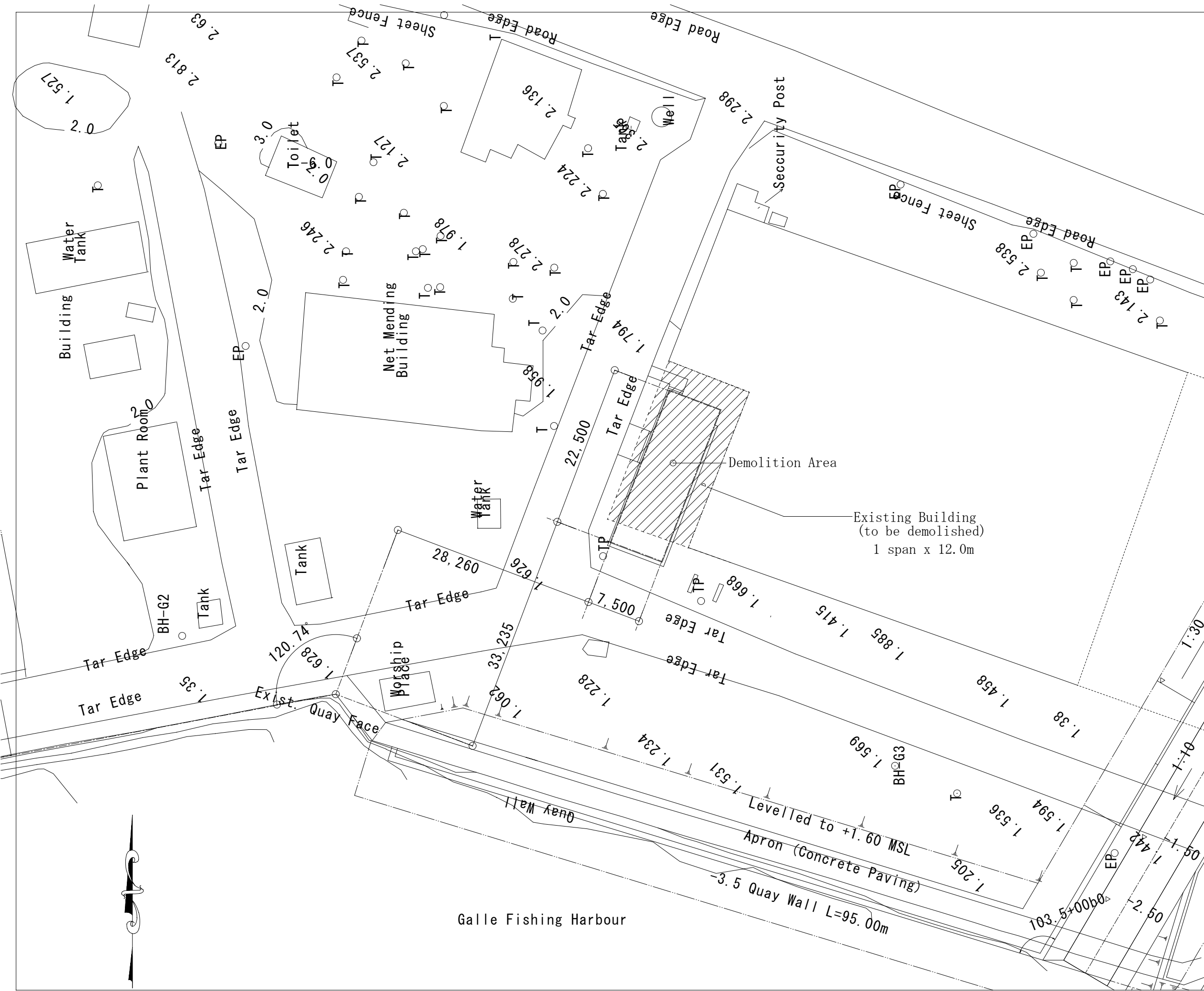
P/034-Q-301

APPROVE BY:



Galle Fishing Harbour

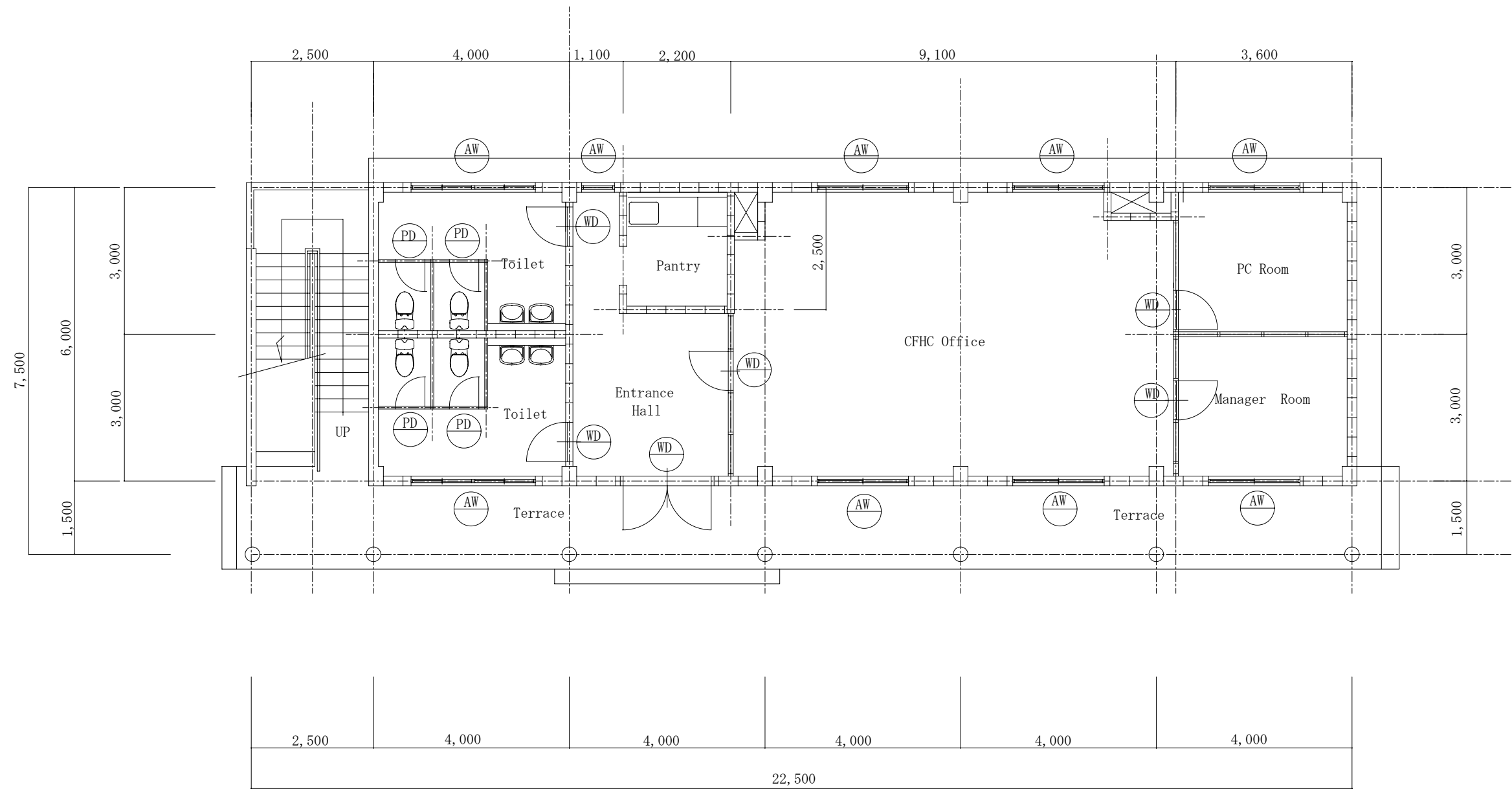
EMPLOYER:	
TENDER REF. NO.	
EXECUTING AGENCY: Ministry of Fisheries & Aquatic Resources Ceylon Fishery Harbour Corporation (CFHC)	
PROJECT TITLE: Construction of CFHC Office Building of Galle Fishery Harbour	
DRAWING TITLE: Site Plan	
DATE :	SCALE: 1/500
BY:	NO. B-001
BY:	
APPROVED BY:	



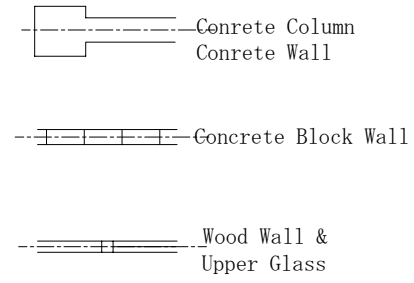
EMPLOYER:	
TENDER REF. NO.	
EXECUTING AGENCY:	
Ministry of Fisheries & Aquatic Resources Ceylon Fishery Harbour Corporation (CFHC)	
PROJECT TITLE:	
Construction of CFHC Office Building of Galle Fishery Harbour	
DRAWING TITLE:	
Demolition Area	
DATE :	SCALE: 1/500
BY:	NO.
BY:	B-002
APPROVED BY:	

Finish Schedule of Exteriors			
Roof	:coloured cement tile roofing, stainless steel nail asphlt roofing 22kg truss wood frame	plywod t-12 glass wool t-50 plywod t-12	Exterior wall :concrete block, mortar, AEP Window :aluminium window finish of interior: wood frame, OP (Manager quarter: wood window with screen grating OP) Exterior fittings :galivanized steel door, anti-chroridisation paint Coating :MARINE PAINT for all steel parts Exterior floor :concrete trowel finishing coated by hardener Handrail :stainless steel pipe H=1,100 (exterior stairs, balcony) Nosing of steps :non-slip tile
Eaves gutter	:Zn/Al steel sheet 0.8t, stainless steel guutter hangers		
Leader	:PVC pipe Φ-100, stainless steel leader straps		
Eaves ceiling	:cement board AEP		
Fascia board	:hemlock OP		
Column	:concrete AEP		
Beam	:concrete AEP		

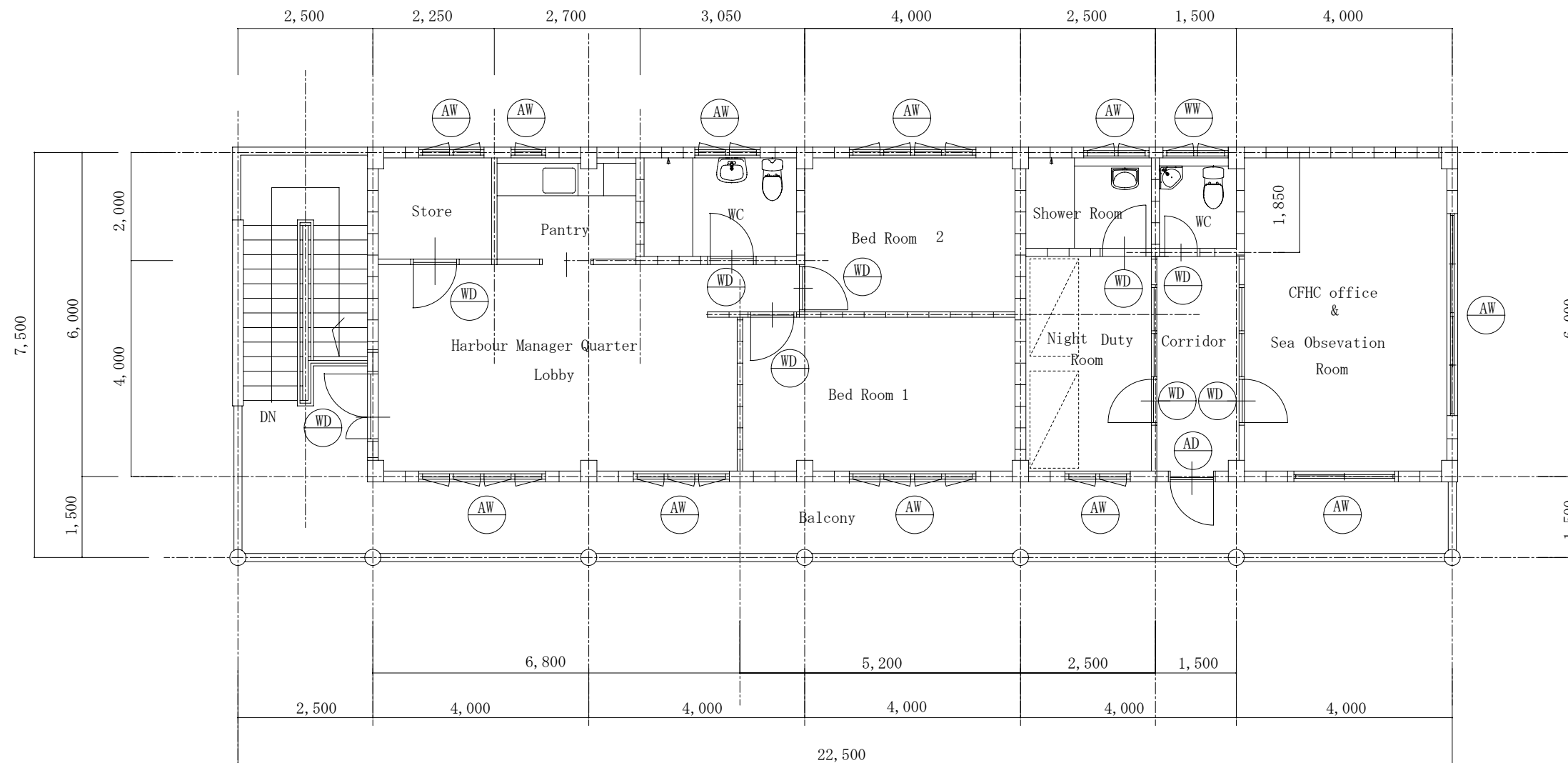
Finish Schedule of Interiors										
Floor (FL)	Room name	Floor face FL=	Floor finish	baseboard	Wall finish	Conice	Ceiling finish	ceiling height FL=	Furnishings	
G. F	Entarance Hall	0	300mm square porcelain tile	mortar, AEP H=60	block:mortar, AEP column·beam:concrete, AEP	P1	plasterboard t-9 EP	3000		
	CFHC Office	0	concrete trowel finishing coated by epoxy paint	lauan OS t-8, H=60	block:mortar, AEP column·beam:concrete, AEP	A1	plasterboard t-9 EP	3000		
	Manager Room	0	concrete trowel finishing coated by epoxy paint	lauan OS t-8, H=60	block:mortar, AEP column·beam:concrete, AEP wood frame partition	A1	plasterboard t-9 EP	3000		
	PC room	0	concrete trowel finishing coated by epoxy paint	lauan OS t-8, H=60	block:mortar, AEP column·beam:concrete, AEP	A1	plasterboard t-9 EP	3000		
	Pantry	0	300mm square porcelain tile water-proofed mortar	-	block:150mm, rectangular porcelain tile	P1	cement board t-4 EP ceiling joint:wood OP	2500	sink rack	
	Toilet (1) (2)	0	300mm square porcelain tile water-proofed mortar	-	block:150mm, rectangular porcelain tile	P1	cement board t-4 EP ceiling joint:wood OP	2500		
1st F	CFHC Office & sea observation room	0	concrete trowel finishing coated by epoxy paint	lauan OS t-8, H=60	block:mortar, AEP column·beam:concrete, AEP	A1	plasterboard t-9 EP	2700		
	Corridor	0	concrete trowel finishing coated by epoxy paint	mortar, AEP H=60	block:mortar, AEP column·beam:concrete, AEP	P1	cement board t-4 EP ceiling joint:wood OP	2700		
	Toilet	-50	300mm square porcelain tile water-proofed mortar	-	block:150mm, rectangular porcelain tile	P1	cement board t-4 EP ceiling joint:wood OP	2500		
	Night duty room	0	concrete trowel finishing coated by epoxy paint	lauan OS t-8, H=60	block:mortar, AEP column·beam:concrete, AEP	P1	plasterboard t-9 EP	2700		
	Showerroom	0	300mm square porcelain tile water-proofed mortar	-	block:150mm, rectangular porcelain tile	---	cement board t-4 EP ceiling joint:wood OP	2500		
	Harbour manager quater									EMPLOYER:
	Lobby	0	300mm square porcelain tile	lauan OS t-8, H=60	block:mortar, AEP column·beam:concrete, AEP	lauan OSCL t-25	plywood t-6 OS ceiling joint:wood OS	2700		
	Bed room 1 · 2	0	concrete trowel finishing coated by epoxy paint	lauan OS t-8, H=60	block:mortar, AEP column·beam:concrete, AEP	lauan OSCL t-25	plywood t-6 OS ceiling joint:wood OS	2700		
	Pantry	0	300mm square porcelain tile water-proofed mortar	lauan OS t-8, H=60	block:mortar, AEP column·beam:concrete, AEP	P1	cement board t-4 EP ceiling joint:wood OP	2500	sink rack	
	Toilet	-50	water-proofed mortar	-	block:150mm, rectangular porcelain tile	P1	cement board t-4 EP ceiling joint:wood OP	2500		
Storage	0	concrete trowel finishing coated by epoxy paint	lauan OS t-8, H=60	block:mortar, AEP column·beam:concrete, AEP		cement board t-4 EP ceiling joint:wood OP	2500			
									TENDER REF. NO.	
									EXECUTING AGENCY:	
									Ministry of Fisheries & Aquatic Resources Ceylon Fishery Harbour Corporation(CFHC)	
									PROJECT TITLE:	
									Construction of CFHC Office Building of Galle Fishery Harbour	
									DRAWING TITLE:	
									Finish Schedule	
									DATE :	
									SCALE:	
									BY:	
									NO.	
									B-101	
									APPROVED BY:	



Ground Floor Plan S=1/100



EMPLOYER:	
TENDER REF. NO.	
EXECUTING AGENCY: Ministry of Fisheries & Aquatic Resources Ceylon Fishery Harbour Corporation(CFHC)	
PROJECT TITLE: Construction of CFHC Office Building of Galle Fishery Harbour	
DRAWING TITLE: Ground Floor Plan	
DATE :	SCALE: 1/100
BY:	NO. B-102
BY:	
APPROVED BY:	



1st Floor Plan S=1/100

Concrete Column
Concrete Wall

Concrete Block Wall

Wood Wall &
Upper Glass

EMPLOYER:

TENDER REF. NO.

EXECUTING AGENCY:
Ministry of Fisheries & Aquatic Resources
Ceylon Fishery Harbour Corporation(CFHC)

PROJECT TITLE:
Construction of
CFHC Office Building
of
Galle Fishery Harbour

DRAWING TITLE:

1st Floor Plan

DATE : SCALE: 1/100

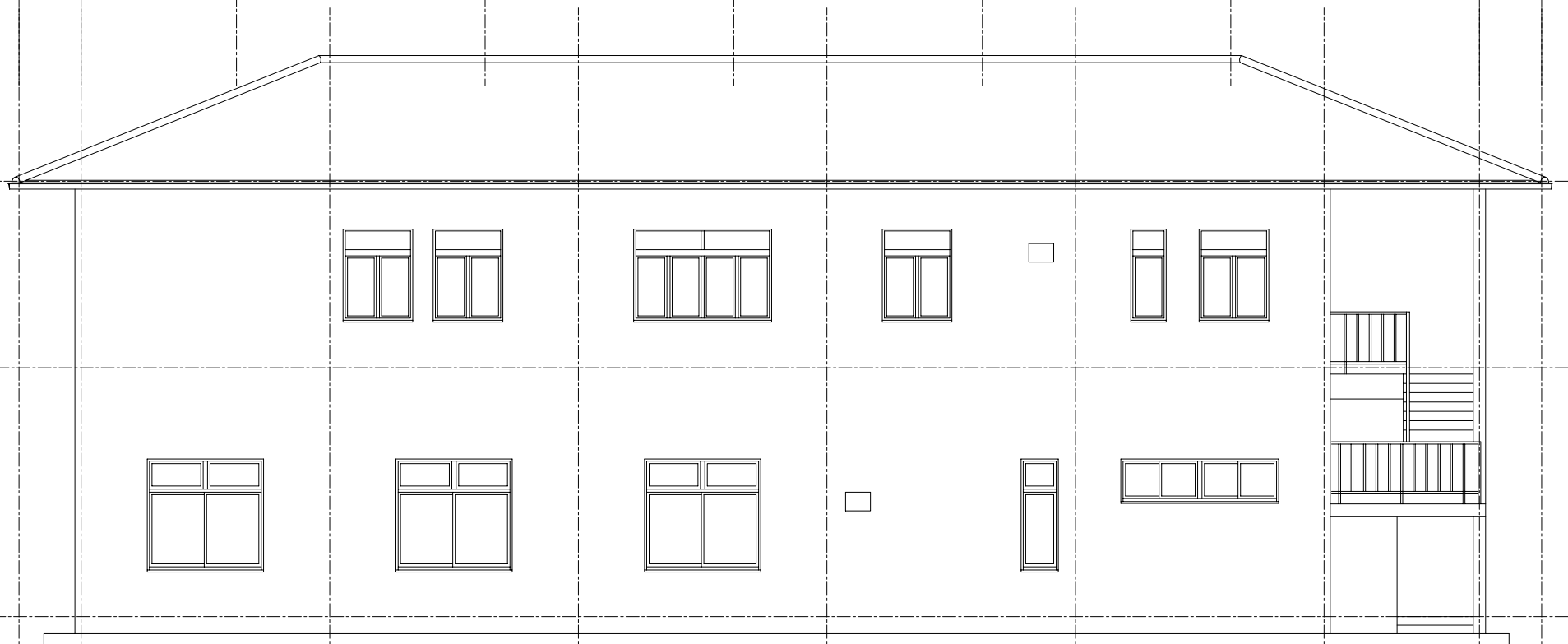
BY: NO.

BY: B-103

APPROVED BY:

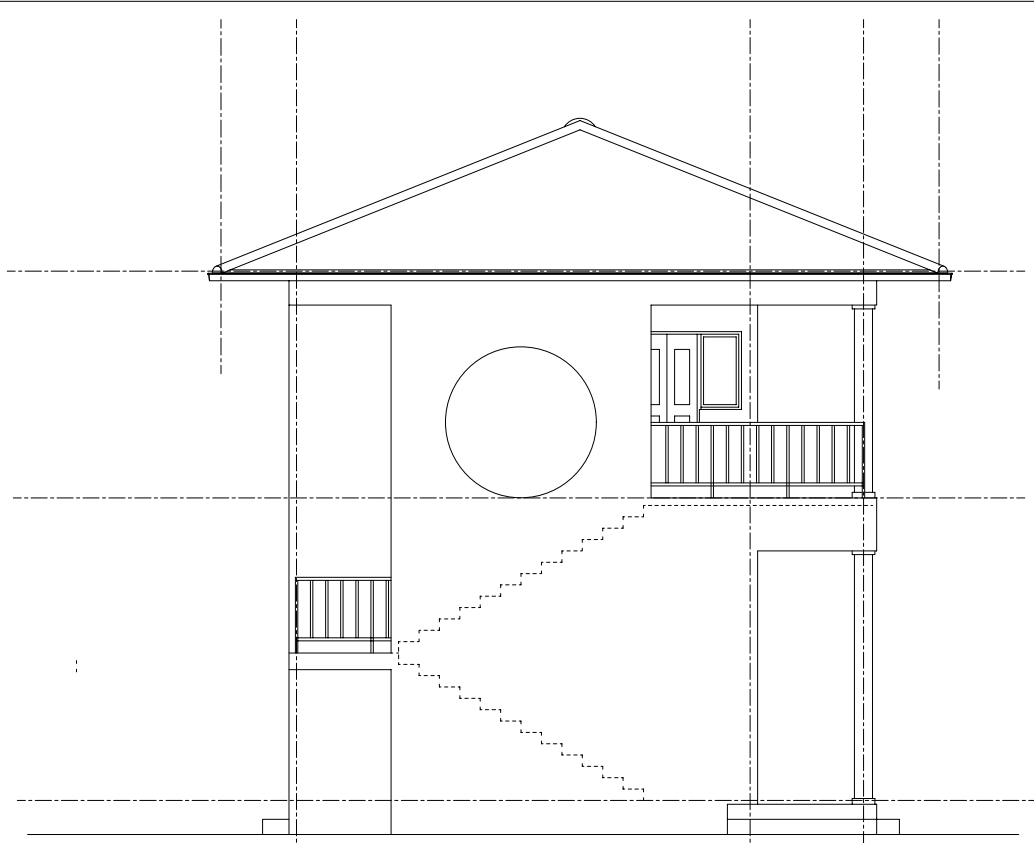


West Elevation S=1/100

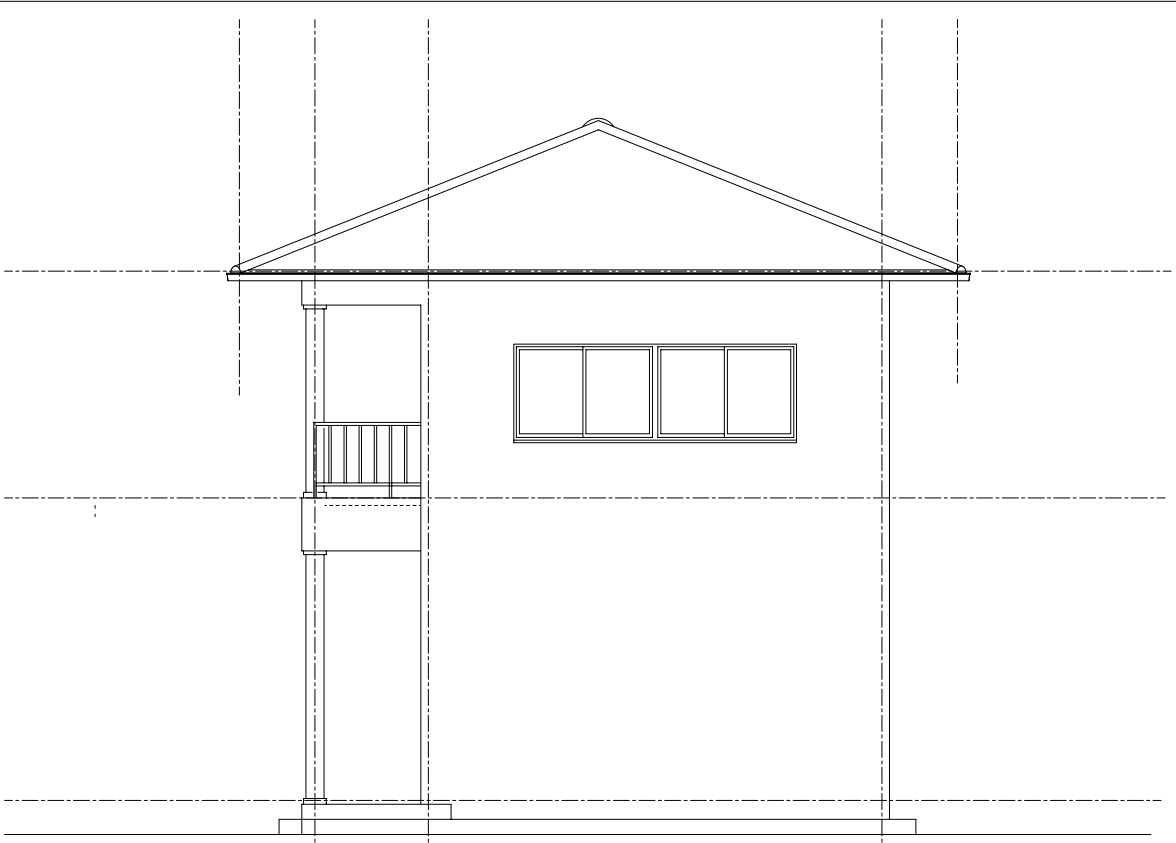


East Elevation S=1/100

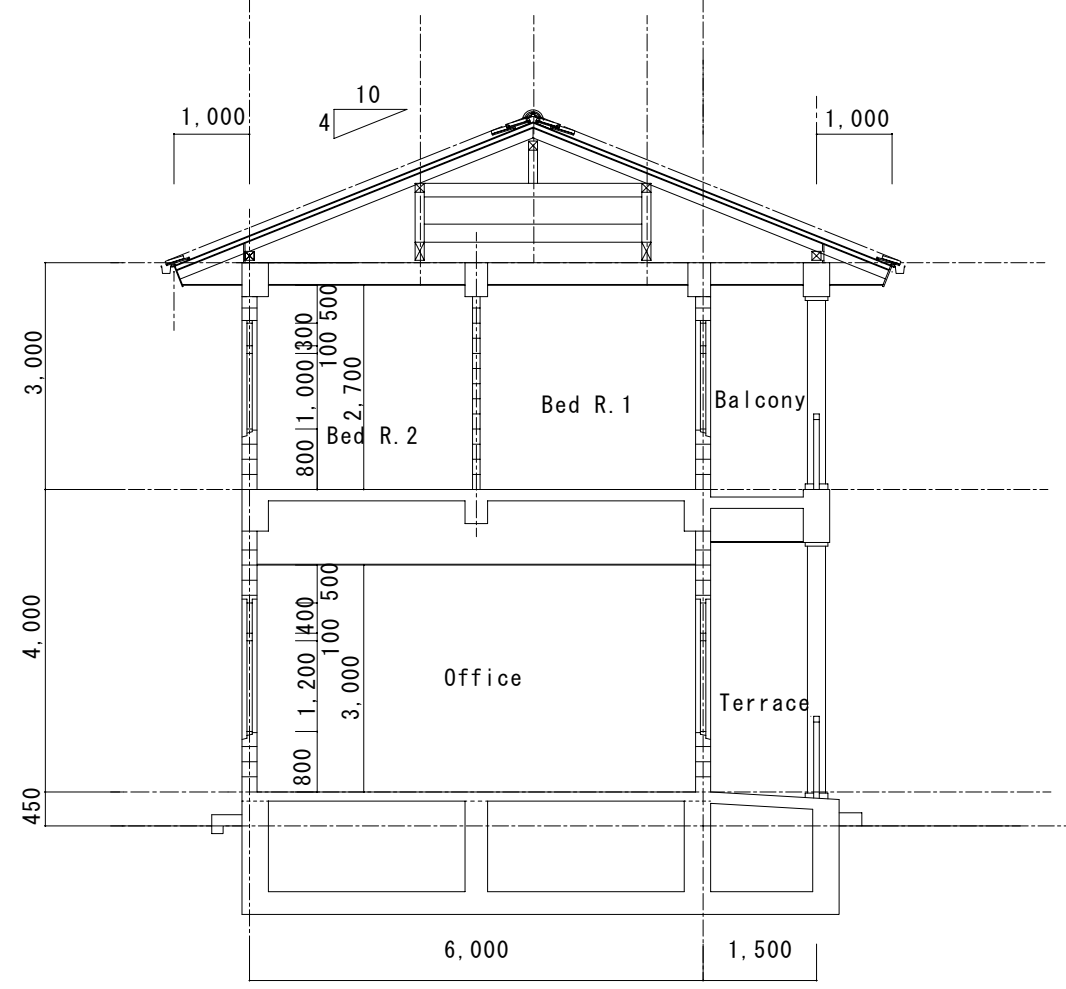
EMPLOYER:	
TENDER REF. NO.	
EXECUTING AGENCY: Ministry of Fisheries & Aquatic Resources Ceylon Fishery Harbour Corporation(CFHC)	
PROJECT TITLE: Construction of CFHC Office Building of Galle Fishery Harbour	
DRAWING TITLE: Elevation (1)	
DATE :	SCALE: 1/100
BY:	NO. B-104
BY:	
APPROVED BY:	



North Elevation s=1/100



South Elevation s=1/100



Section S=1/100

EMPLOYER:

TENDER REF. NO.

EXECUTING AGENCY:
Ministry of Fisheries & Aquatic Resources
Ceylon Fishery Harbour Corporation(CFHC)

PROJECT TITLE:
Construction of
CFHC Office Building
of
Galle Fishery Harbour

DRAWING TITLE:

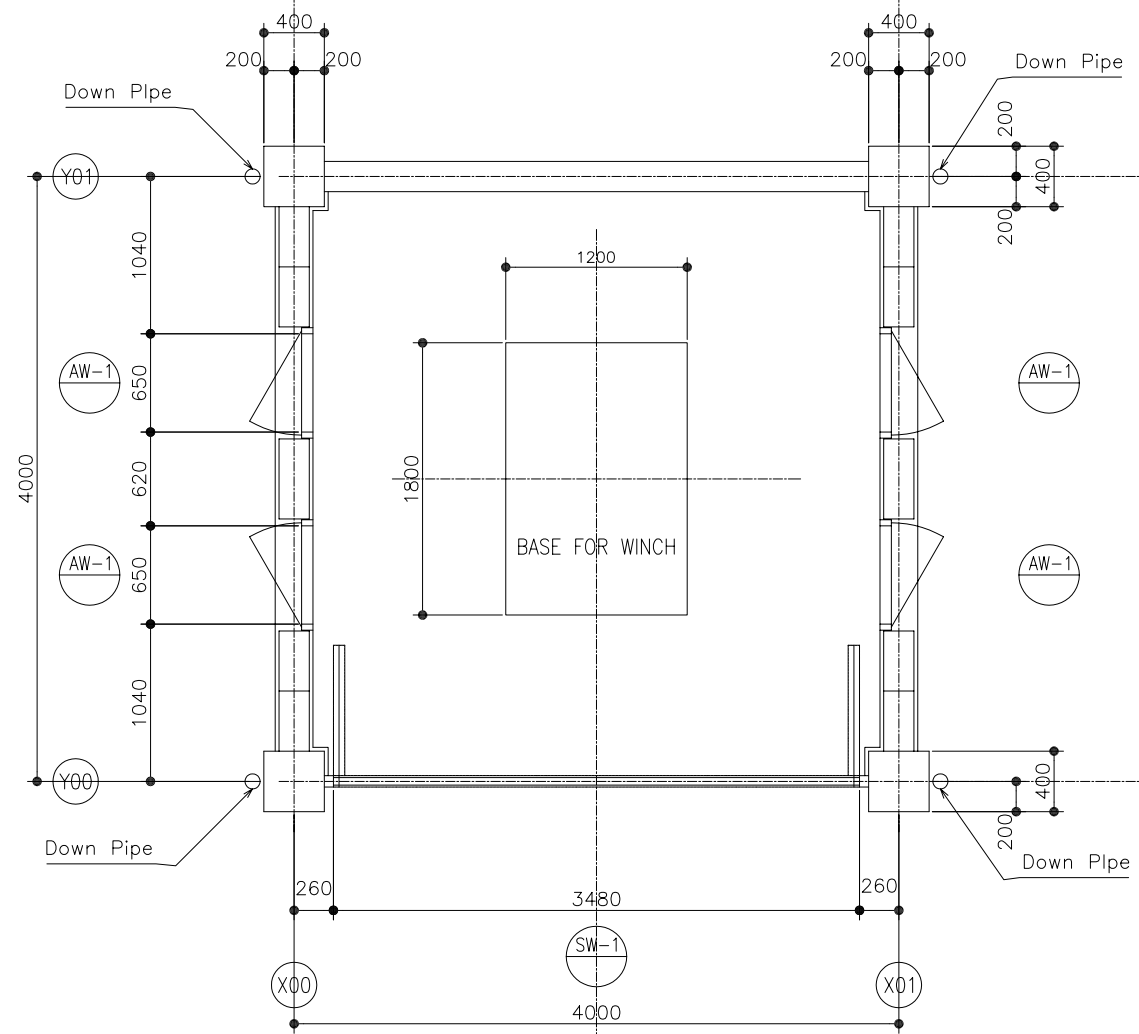
Elevation (2)
Section

DATE : SCALE: 1/100

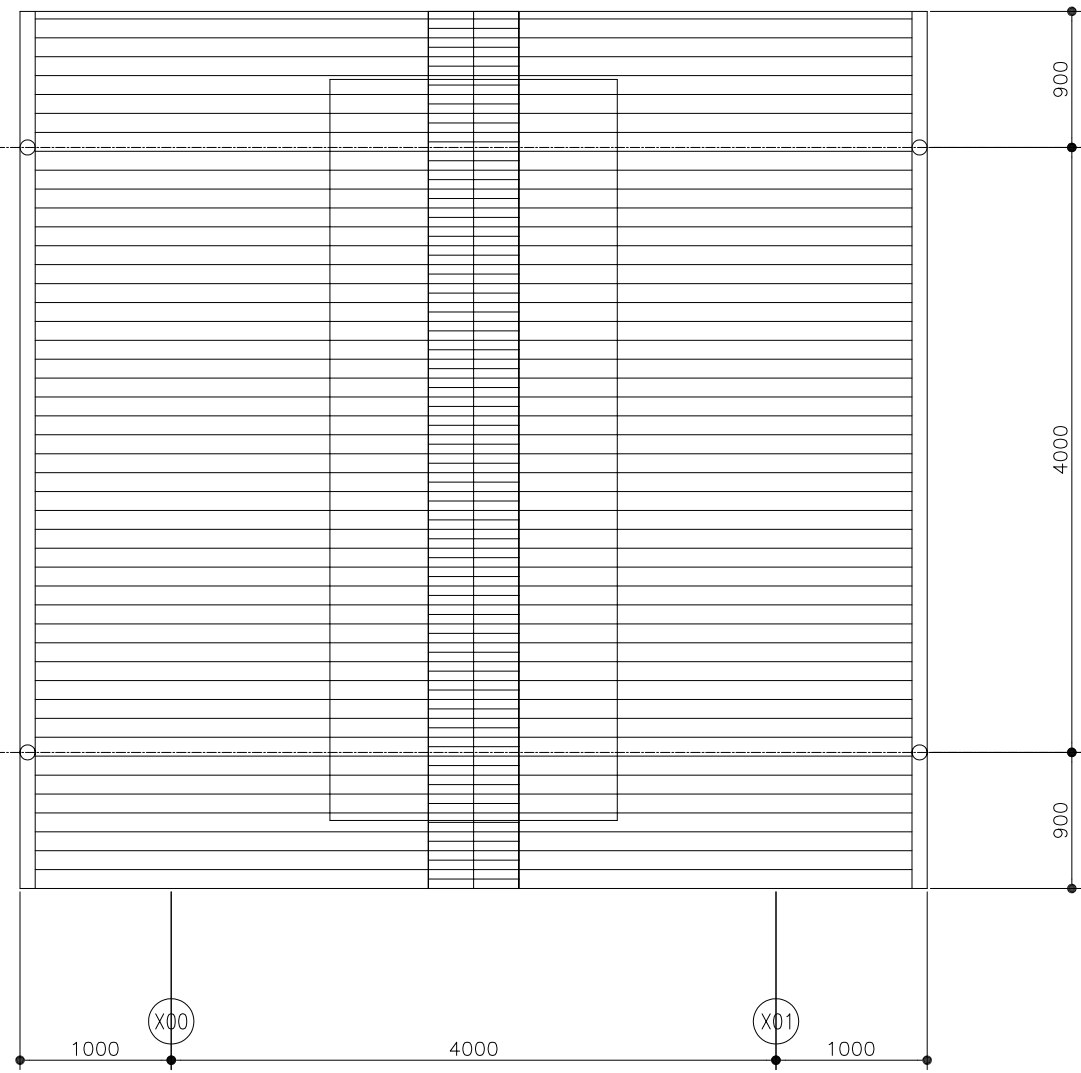
BY: NO.

BY: B-105

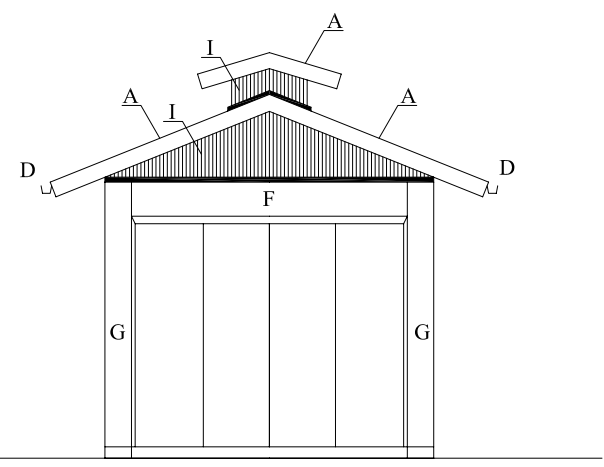
APPROVED BY:



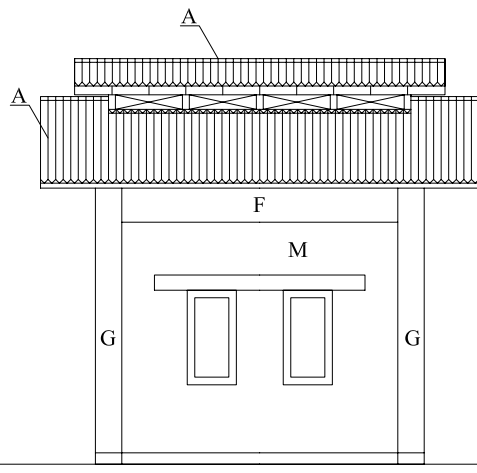
GROUND FLOOR PLAN 1/50



ROOF PLAN 1/50



ELEVATION 1/100



ELEVATION 1/100

NOTE:
 A: Roof: truss wood frame, colored corrugated cement sheet (L)
 B: Leader head: color stainless steel plate 0.8t
 C: Leader : VPVC pipe ϕ -100, stainless steel leader straps
 D: Eaves gutter: Zn/AL steel sheet 0.8t, stainless steel gutter hangers
 F: Beam: concrete AEP
 G: Column: concrete AEP
 H: Exterior wall:mortar AEP concrete block 150t
 I: Exterior wall: cement boad t=6.0mm
 J: Steel door: MARINE PAINTS
 K: Aluminium window
 L: Footing beam: concrete
 M: Appentice (lintel): precast concrete AEP

NOTE:
 1. All dimensions are in millimeter, unless indicated oterwise.

EMPLOYER:

 EXECUTING AGENCY:
 Ministry of Fisheries & Aquatic Resources
 Ceylon Fishery Harbour Corporation (CFHC)

PROJECT TITLE:
 Project for Reconstruction of
 Quaywall Structures and CFHC Office Building
 at Galle Fishery Harbor
 Damaged by Tsunami Disaster

DRAWING TITLE:
 Building Works

 Winch House
 Ground Floor and Roof Plan, Elevation

DATE:	SCALE: 1/50, 1/100
BY:	NO.
BY:	P/034-B-201
APPROVE BY:	