

NOTE:
 1. All dimensions are in meter, unless indicated otherwise.
 All elevations are related to MSL (National Survey Datum) and all coordinates are referred to National Grid System.

| Key Coordinates | | |
|-----------------|----------|-----------|
| | N - Code | E - Code |
| Point A | 93252.85 | 139682.93 |
| Point B | 93225.15 | 139773.80 |

EMPLOYER:

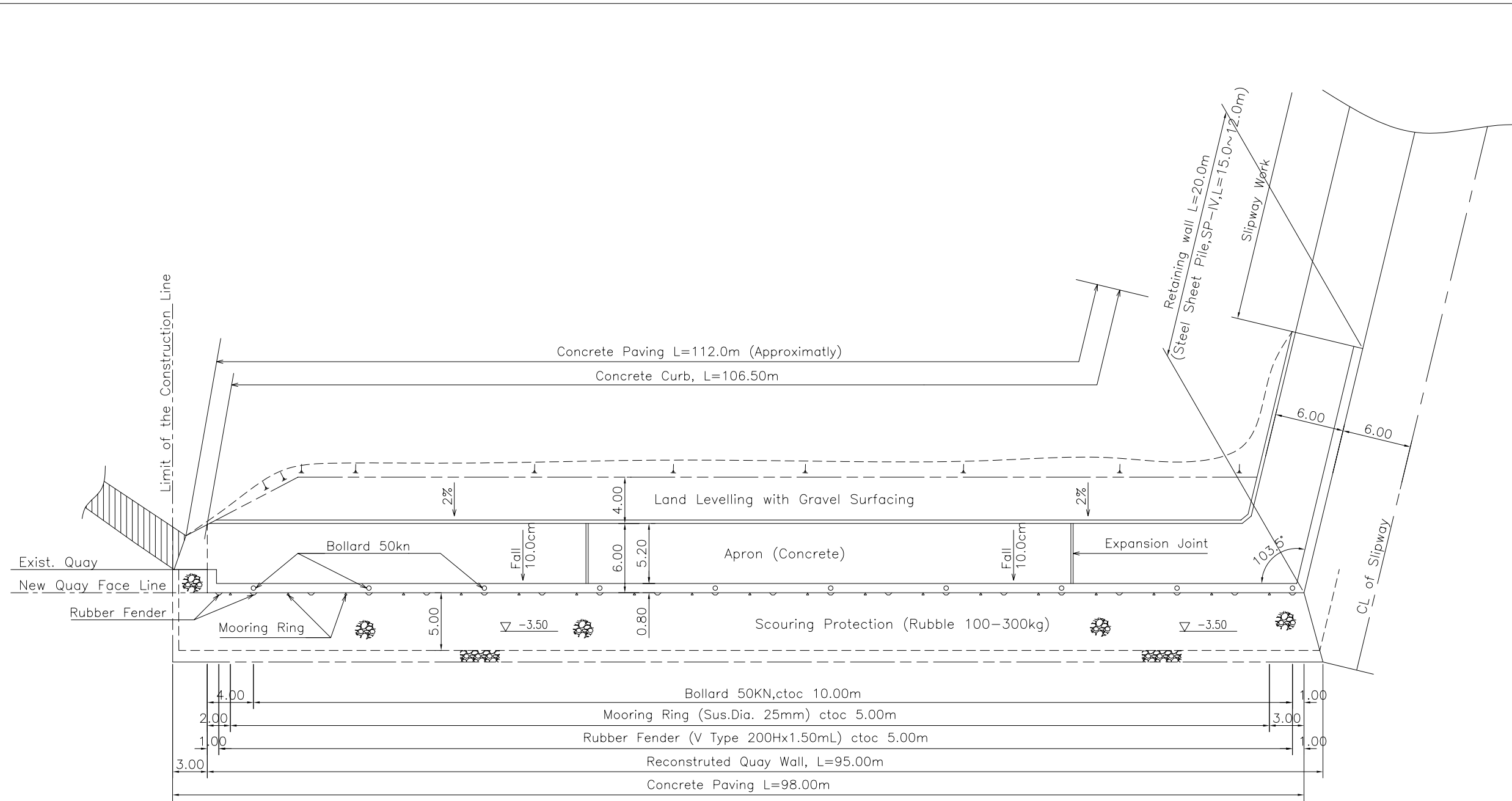
 EXECUTING AGENCY:

Ministry of Fisheries & Aquatic Resources
 Ceylon Fishery Harbour Corporation (CFHC)

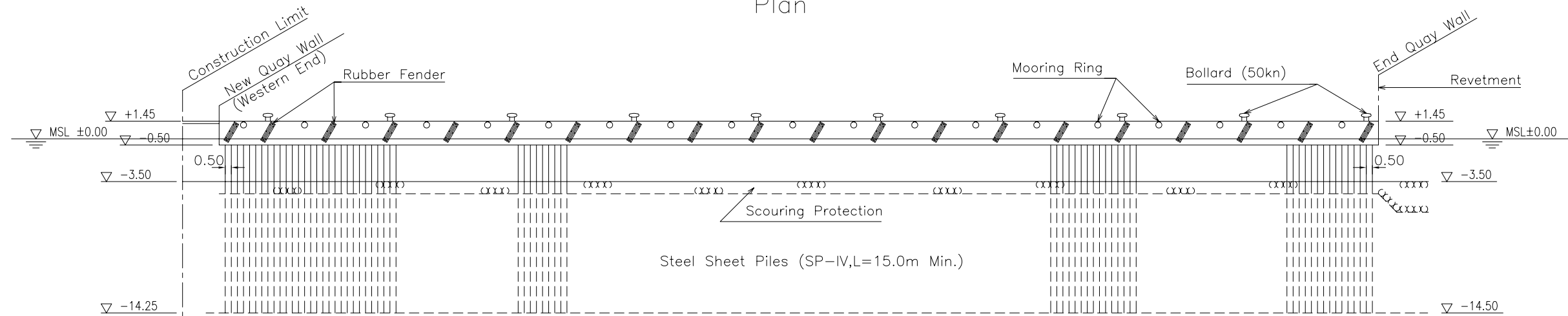
PROJECT TITLE:
 Project for Reconstruction of Quaywall Structures and CFHC Office Building at Galle Fishery Harbor Damaged by Tsunami Disaster

DRAWING TITLE:
 Quay Structures
 Quay wall
 General Plan of Reconstruction Quay Structures

| | |
|-------------|-----------------|
| DATE: | SCALE: 1/500 |
| BY: | NO. |
| BY: | P/034-Q-001 |
| APPROVE BY: | |



Plan



Front View

NOTE:
 1. All dimensions are in meter, unless indicated otherwise.
 All elevations are related to MSL.

2. The following quay fittings shall be provided to the quay:

| Item | Specifications | Qty |
|------------------|---------------------|----------|
| 1) Bollard | 50 KN/unit | 10 Units |
| 2) Mooring Ring | SUS 304, dia 25 mm | 19 Nrs |
| 3) Rubber Fender | V-Type H200 x L1500 | 20 Units |

Types, specifications and exact locations of the quay fittings shall be subject to Engineer's approval.

3. Apron Paving
 Following joints shall be appropriately provided:

- Expansion joint : at distance not more than 60 m
- Transversal contraction joint : at distance not more than 6 m

- Construction joints
 The details of joints are as indicated in DWG. No. P/034-Q-103.

All the joint locations shall be submitted by the contractor for the Engineer's Approval.

EMPLOYER:

EXECUTING AGENCY:

Ministry of Fisheries & Aquatic Resources
 Ceylon Fishery Harbour Corporation (CFHC)

PROJECT TITLE:

Project for Reconstruction of Quaywall Structures and CFHC Office Building at Galle Fishery Harbor Damaged by Tsunami Disaster

DRAWING TITLE:

Quay Structures
 Quay wall

Quay Wall Arrangement

DATE:

SCALE:
 1/400

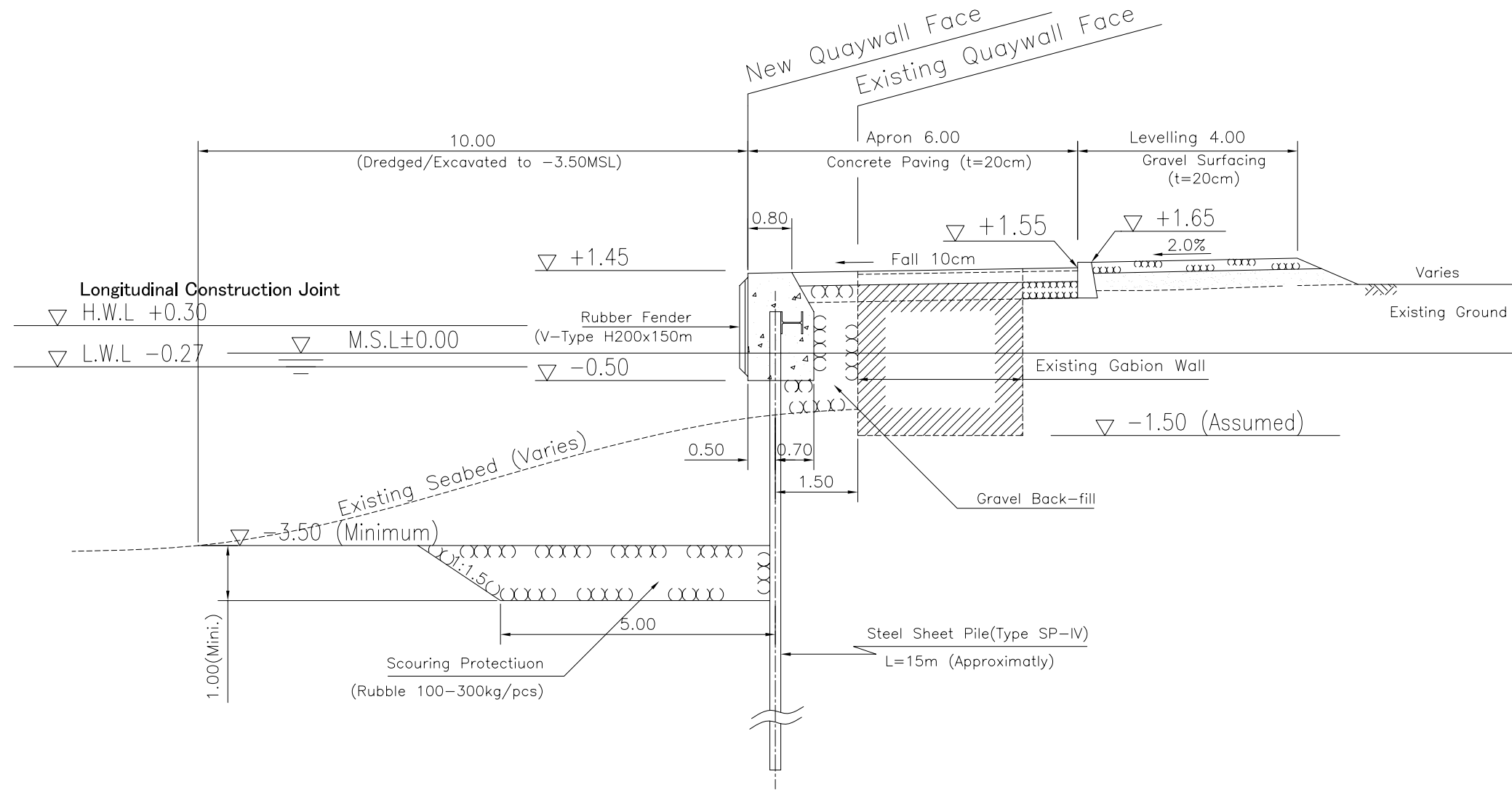
BY:

NO.

BY:

P/034-Q-101

APPROVE BY:



- NOTE:
- All dimensions are as noted, and all elevations are related to MSL.
 - Characteristic strength of concrete:
 - Coping concrete: 40 N/mm²
 - Apron paving: 30 N/mm²
 - Concrete Curb: 20 N/mm²
 - Steel material shall be as specified in the relevant Technical Specifications.

EMPLOYER:

EXECUTING AGENCY:
 Ministry of Fisheries & Aquatic Resources
 Ceylon Fishery Harbour Corporation (CFHC)

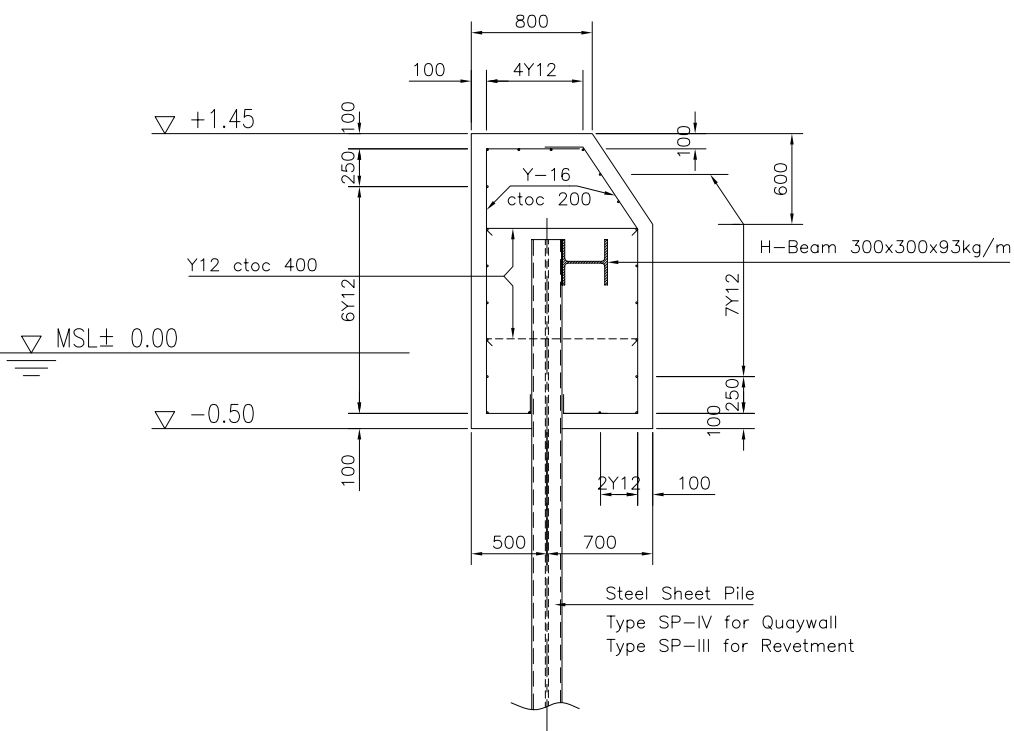
PROJECT TITLE:
 Project for Reconstruction of
 Quaywall Structures and CFHC Office Building
 at Galle Fishery Harbor
 Damaged by Tsunami Disaster

DRAWING TITLE:
 Quay Structures
 Quay wall
 Typical Section and Coping Detail

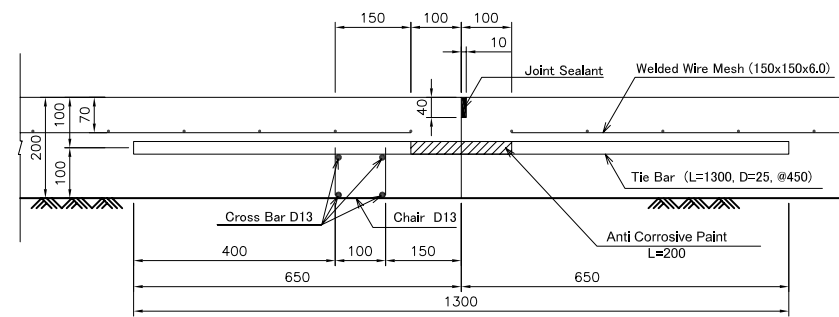
| | |
|-------------|-----------------|
| DATE: | SCALE: 1/100 |
| BY: | NO. |
| BY: | P/034-Q-102 |
| APPROVE BY: | |

TYPICAL SECTION OF NEW QUAY WALL
 Steel Sheet pile Type s=1/100

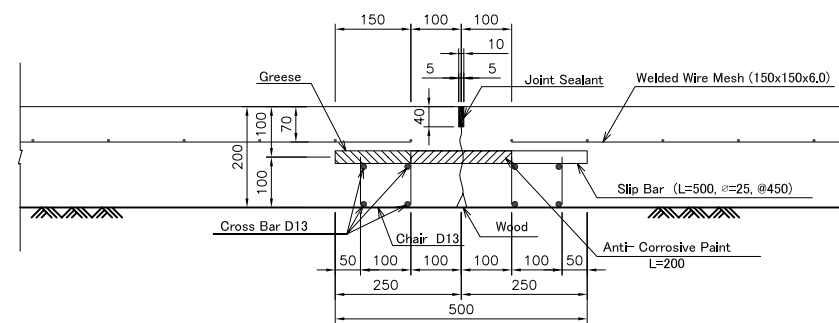
(Unit in meter)



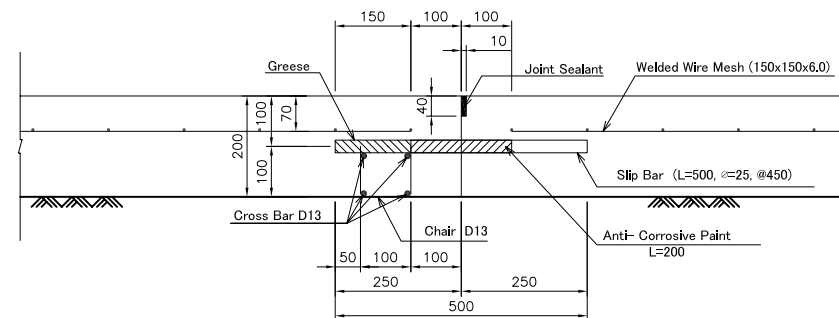
COPING DETAIL s=1/50
 (Unit in millimeter)



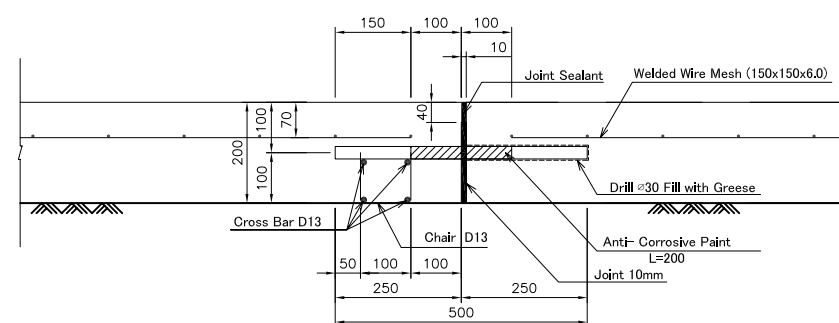
Longitudinal Construction Joint



Transversal Contraction Joint

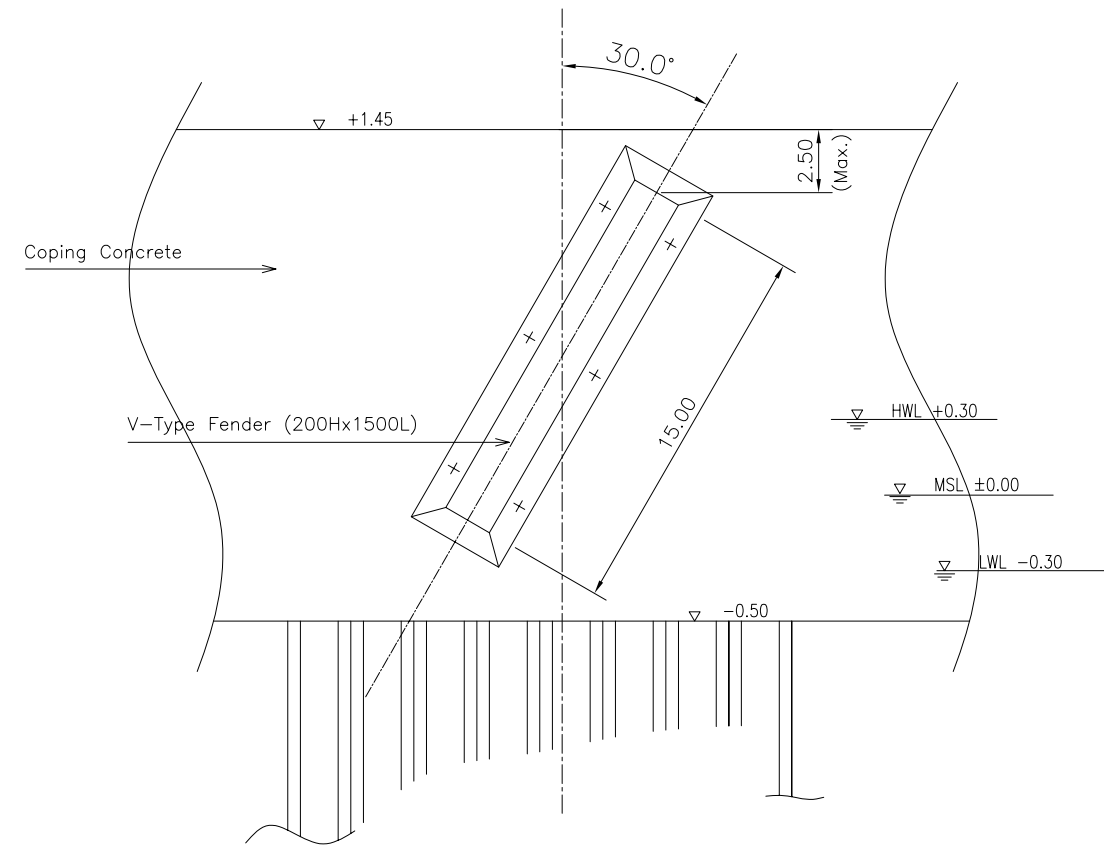


Transversal Construction Joint

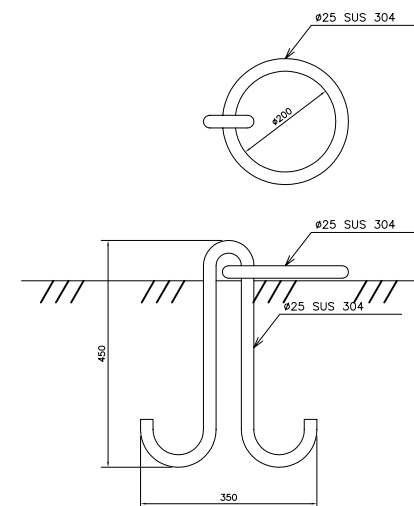


Expansion Joint

Joint Details of Apron Paving
(Unit in millimeter, Scale: 1/15)



Fender Installation
(Unit in meter, Scale : 1/30)



Mooring Ring
(Unit in millimeter, Scale: 1/15)

EMPLOYER:

EXECUTING AGENCY:

Ministry of Fisheries & Aquatic Resources
Ceylon Fishery Harbour Corporation (CFHC)

PROJECT TITLE:

Project for Reconstruction of
Quaywall Structures and CFHC Office Building
at Galle Fishery Harbor
Damaged by Tsunami Disaster

DRAWING TITLE:

Quay Structures
Quay wall

Miscellaneous details

DATE:

SCALE:

As shown

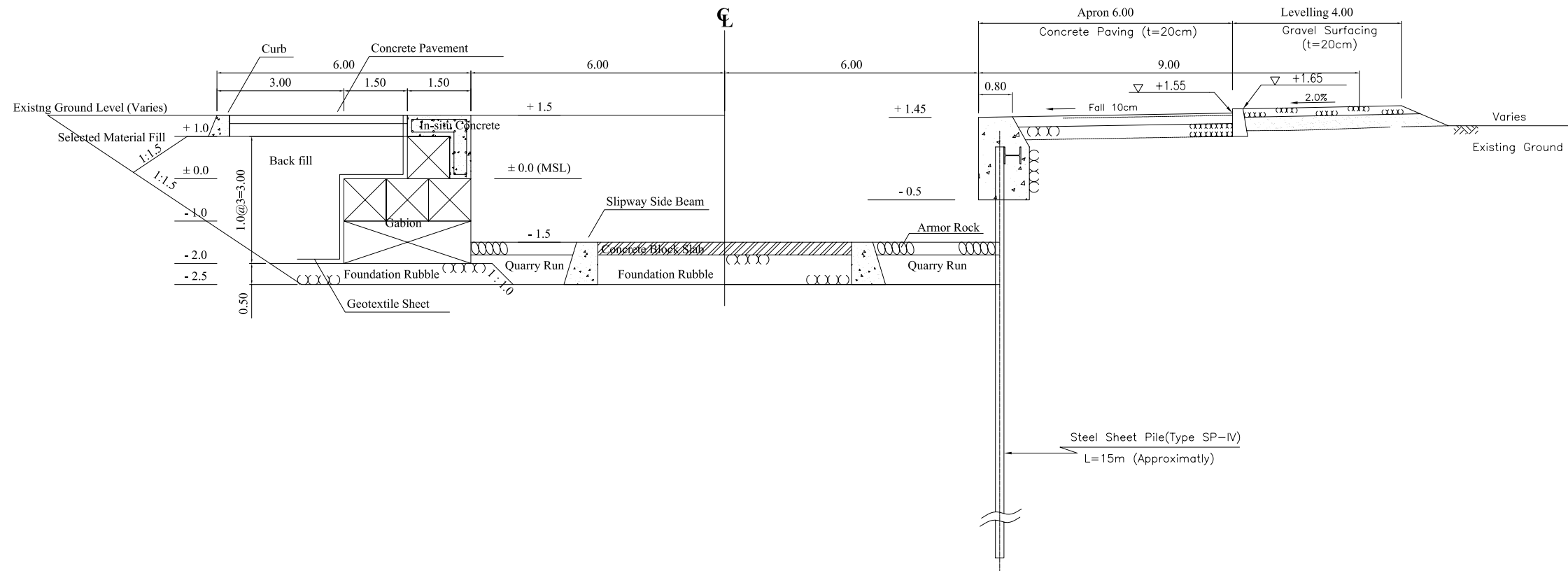
BY:

NO.

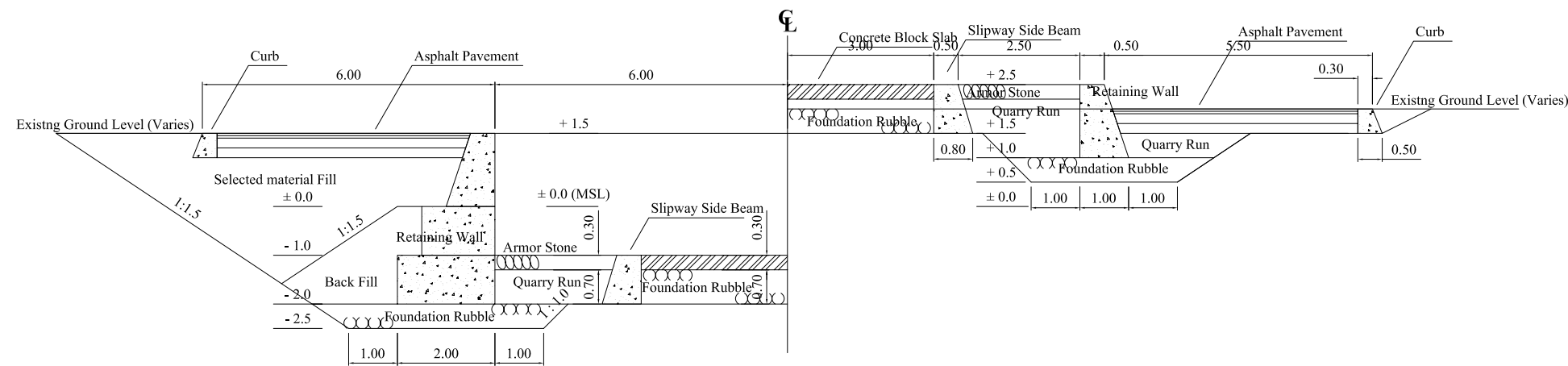
BY:

P/034-Q-103

APPROVE BY:



CROSS SECTION "C" - "C"



CROSS SECTION "B" - "B"

CROSS SECTION "A" - "A"

- NOTE:
- All dimensions are in meter, unless indicated otherwise.
 - All elevations are related to MSL.
 - Material shall be as follows:
 - Gabion (L=3.0m, B=1.0m, H=1.0m)
 - All Precast concrete blocks tensile strength (28days) 40N/mm²
 - Concrete paving tensile strength (28days) 30N/mm² (min)

Foundation Rubble: 50-250 kg
Armor Rock: 50-250 kg

EMPLOYER:

EXECUTING AGENCY:

Ministry of Fisheries & Aquatic Resources
Ceylon Fishery Harbour Corporation (CFHC)

PROJECT TITLE:

Project for Reconstruction of
Quaywall Structures and CFHC Office Building
at Galle Fishery Harbor
Damaged by Tsunami Disaster

DRAWING TITLE:

Quay Structures
Slipway

Typical Sections

DATE:

SCALE:

1/125

BY:

NO.

BY:

P/034-Q-202

APPROVE BY: