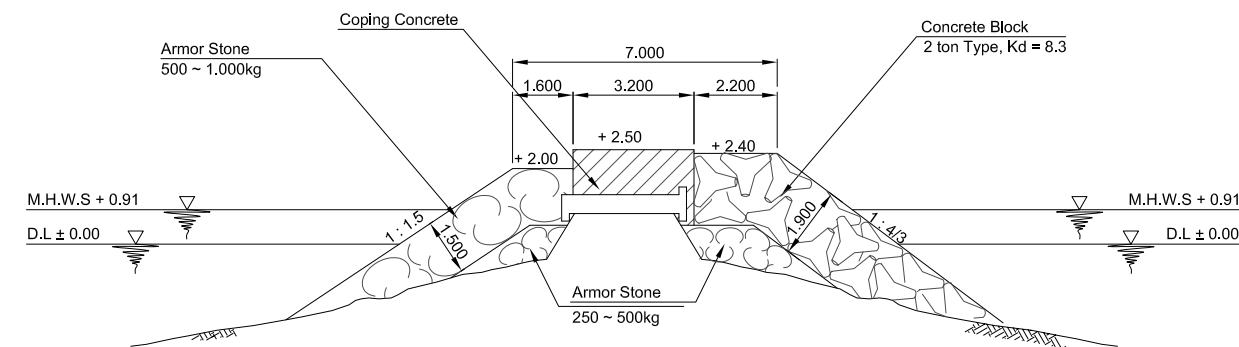
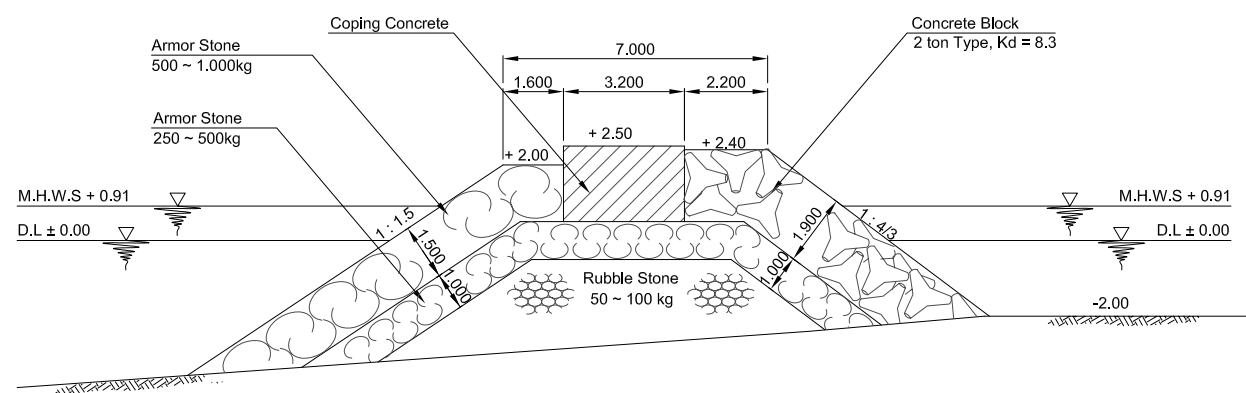


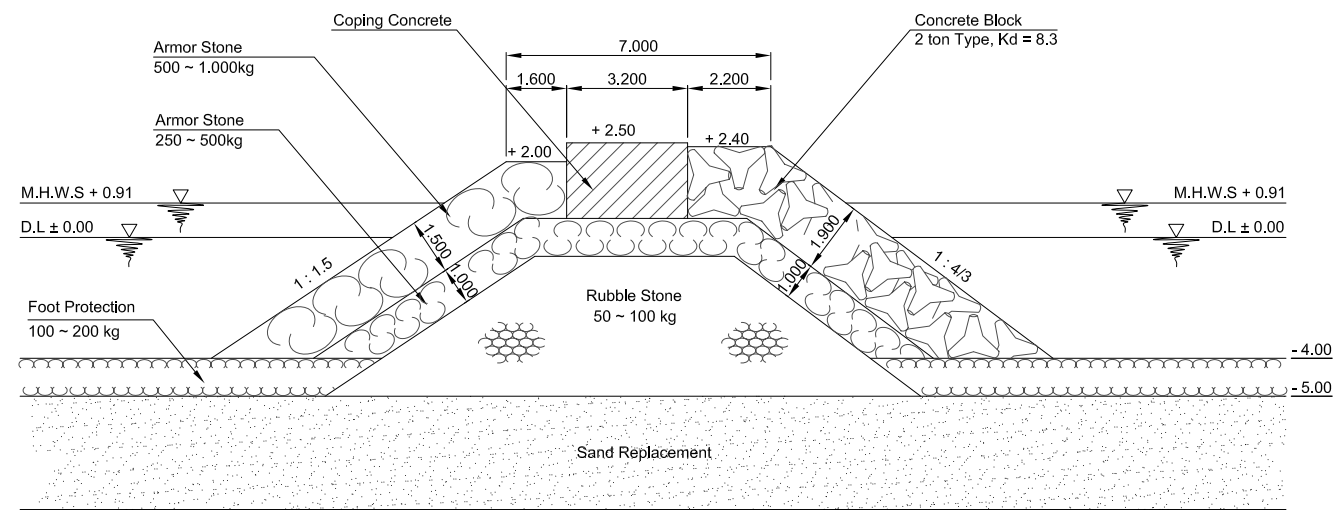
Section A - A



Section B - B



Section C - C

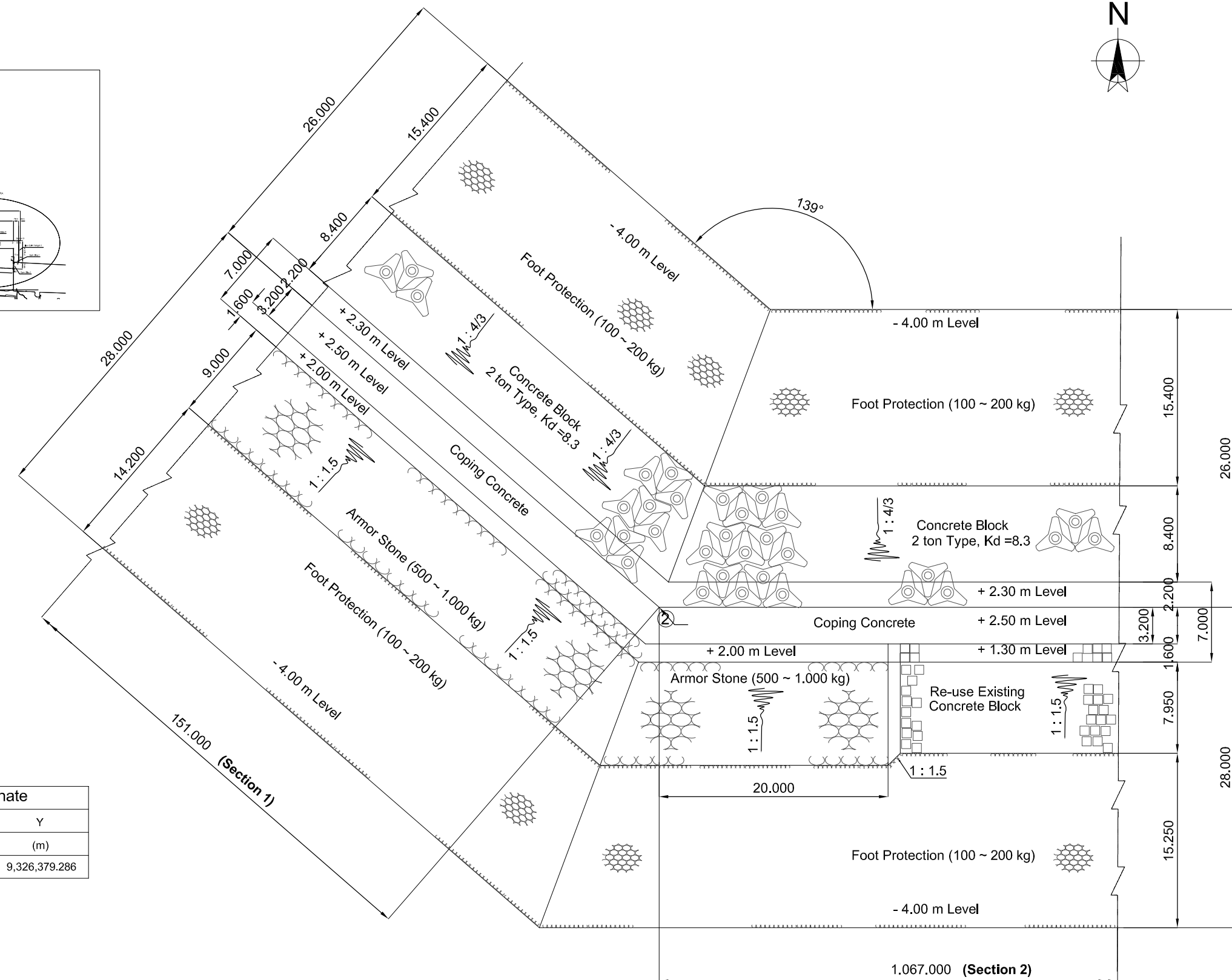
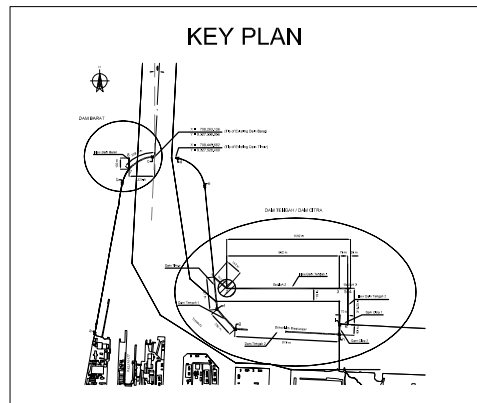


Section D - D

Section 1 of New Dam Tengah 1

Note : Refer to Drawing NO. P-B-018

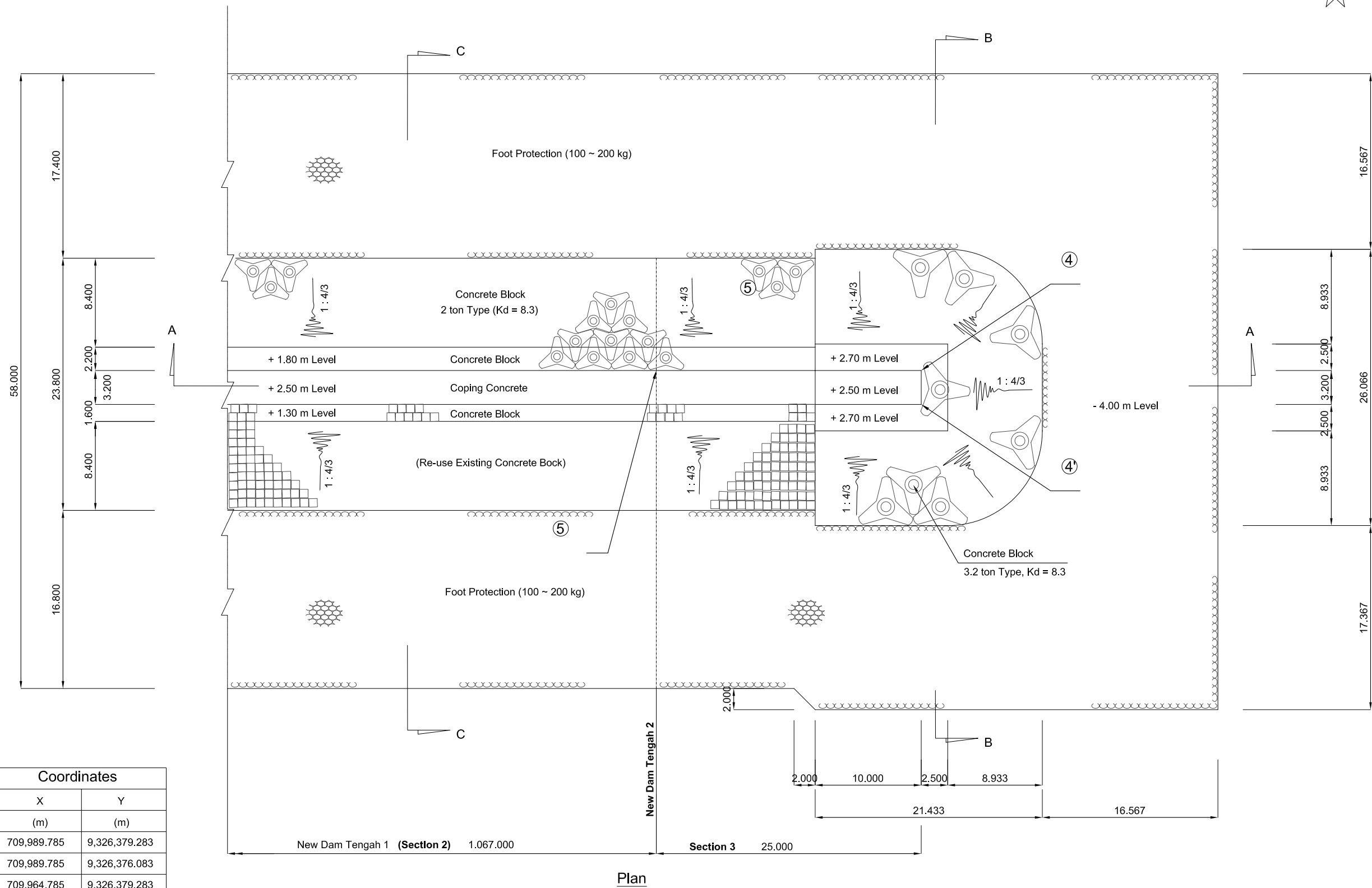
						JAPAN INTERNATIONAL COOPERATION AGENCY (JICA)		THE DETAILED DESIGN ON THE URGENT REHABILITATION PROJECT OF THE TANJUNG PRIK PORT IN THE REPUBLIC OF INDONESIA		PREPARED BY : Y. PRASETYANTO CHECKED BY : M. IMAMURA APPROVED BY : K. OKUBO		SECTION : CHANNEL AND BASIN IMPROVEMENT SUB-SECTION : BREAKWATER TITLE : CROSS SECTION OF SECTION 1 OF NEW DAM TENGAH-1		DATE : MARCH 2006 SCALE : 1 : 200 DRAWING NO. : P-B-019	
REV. NO.	DATE	COORDINATE	BY	APPROVED	DATE	DIRECTORATE GENERAL OF SEA COMMUNICATION (DGSC)		NIPPON KOEI CO., LTD. JAPAN PORT CONSULTANTS, LTD.							



Note : Refer to Drawing No.P-B-001

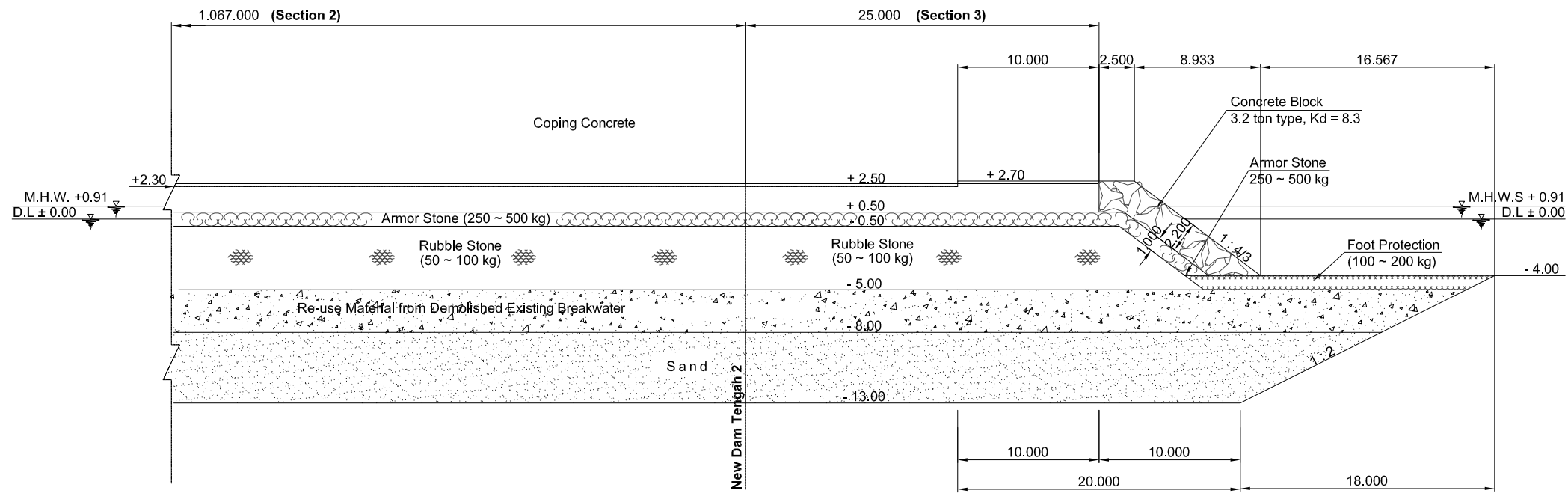
Corner of New Dam Tengah 1

REV. NO.	DATE	COORDINATE	BY	APPROVED	DATE	<p>JAPAN INTERNATIONAL COOPERATION AGENCY (JICA)</p> <p>DIRECTORATE GENERAL OF SEA COMMUNICATION (DGSC)</p>	<p>THE DETAILED DESIGN ON THE URGENT REHABILITATION PROJECT OF THE TANJUNG PRIOK PORT IN THE REPUBLIC OF INDONESIA</p> <p>NIPPON KOEI CO., LTD.</p> <p>JAPAN PORT CONSULTANTS, LTD.</p>	PREPARED BY: Y. PRASTYANTO CHECKED BY: M. IMAMURA APPROVED BY: K. OKUBO	SECTION : CHANNEL AND BASIN IMPROVEMENT SUB-SECTION : BREAKWATER TITLE : CORNER OF NEW DAM TENGAH-1	DATE : MARCH 2006 SCALE : 1 : 400 DRAWING NO. : P-B-020

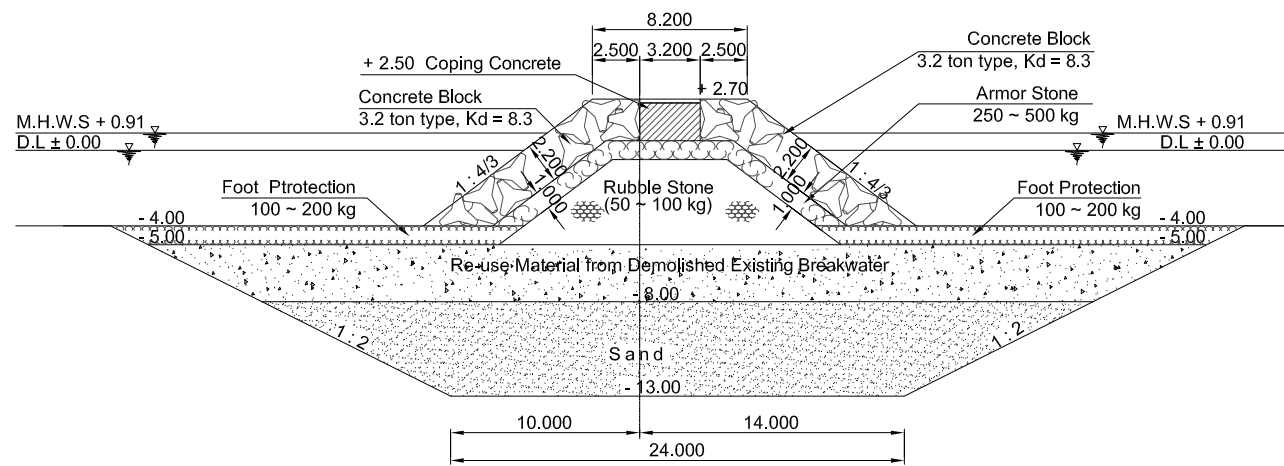


Head Treatment of Dam Tengah 1

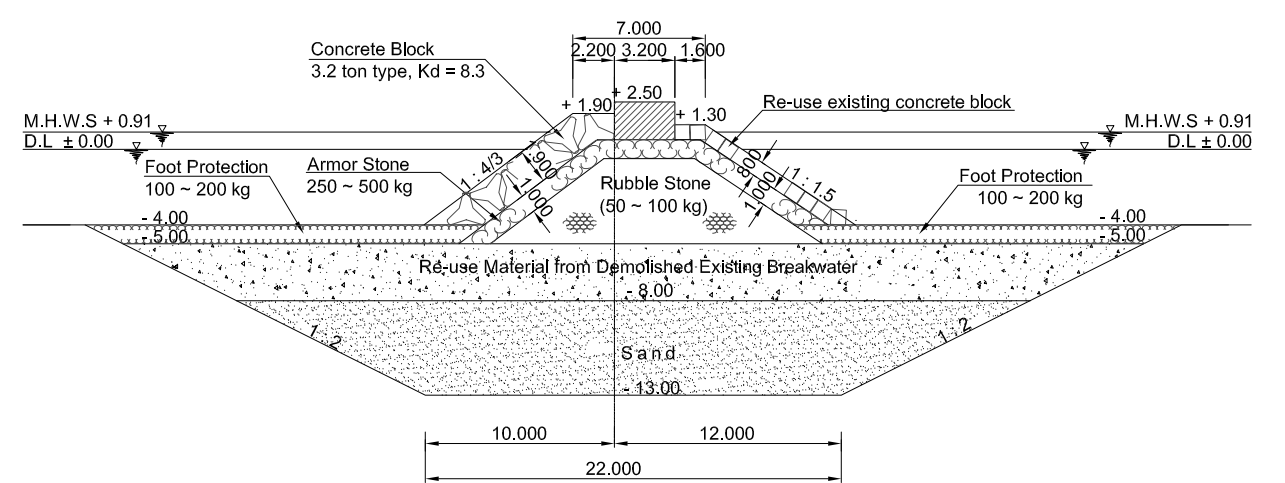
REV. NO.	DATE	COORDINATE	BY	APPROVED	DATE	<p>JAPAN INTERNATIONAL COOPERATION AGENCY (JICA)</p> <p>DIRECTORATE GENERAL OF SEA COMMUNICATION (DGSC)</p>	<p>THE DETAILED DESIGN ON THE URGENT REHABILITATION PROJECT OF THE TANJUNG PRIOK PORT IN THE REPUBLIC OF INDONESIA</p> <p>NIPPON KOEI CO., LTD.</p> <p>JAPAN PORT CONSULTANTS, LTD.</p>	<p>PREPARED BY: </p> <p>CHECKED BY: </p> <p>APPROVED BY: </p>	<p>SECTION : CHANNEL AND BASIN IMPROVEMENT</p> <p>SUB-SECTION : BREAKWATER</p> <p>TITLE : HEAD TREATMENT PLAN NEW DAM TENGAH-1</p>	DATE : MARCH 2006
										SCALE : 1 : 400



Section A-A



Section B-B

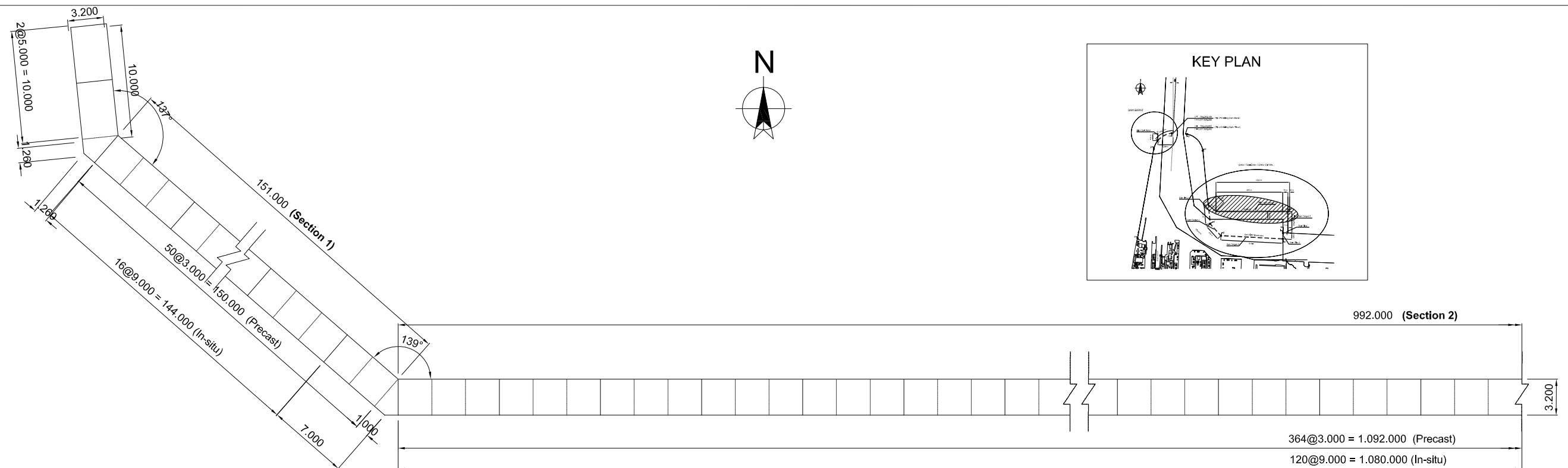
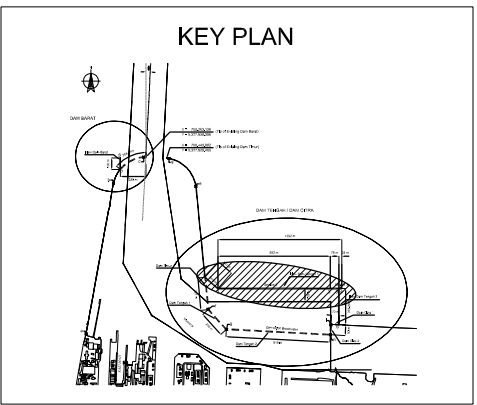


Section C-C

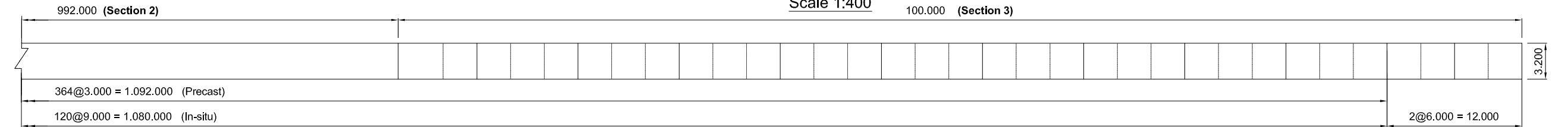
Head Treatment of Dam Tengah 1

Note : Refer to Drawing NO. P-B-021

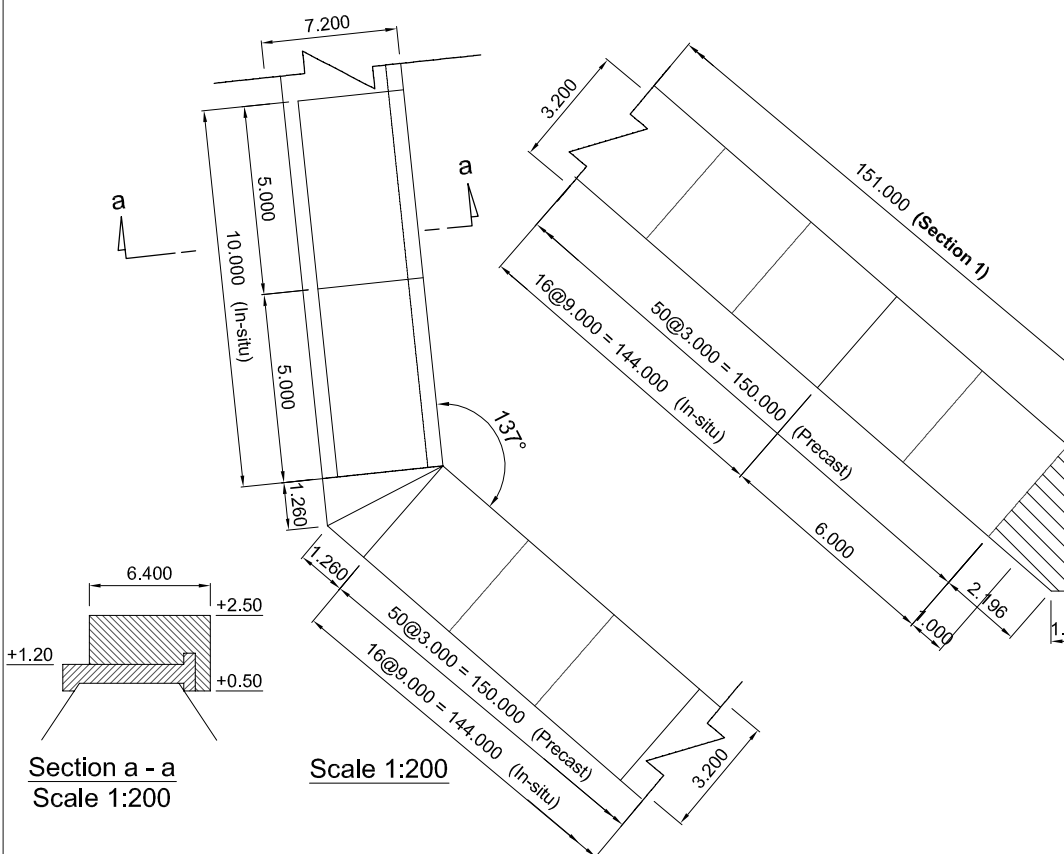
REV. NO.		DATE		COORDINATE		BY		APPROVED		DATE		<p>JAPAN INTERNATIONAL COOPERATION AGENCY (JICA)</p> <p>DIRECTORATE GENERAL OF SEA COMMUNICATION (DGSC)</p>	<p>THE DETAILED DESIGN ON THE URGENT REHABILITATION PROJECT OF THE TANJUNG PRIK PORT IN THE REPUBLIC OF INDONESIA</p> <p>NIPPON KOEI CO., LTD.</p> <p>JAPAN PORT CONSULTANTS, LTD.</p>	<p>PREPARED BY: Y. PRASEYANTO</p> <p>CHECKED BY: M. IMAMURA</p> <p>APPROVED BY: K. OKUBO</p>	<p>SECTION : CHANNEL AND BASIN IMPROVEMENT</p> <p>SUB-SECTION : BREAKWATER</p> <p>TITLE : HEAD TREATMENT SECTION NEW DAM TENGAH-1</p>	<p>DATE : MARCH 2006</p> <p>SCALE : 1 : 400</p> <p>DRAWING NO. : P-B-022</p>
<p>REUSE MATERIAL FROM DEMOLISHED EXISTING BREAKWATER</p>																



Scale 1:400

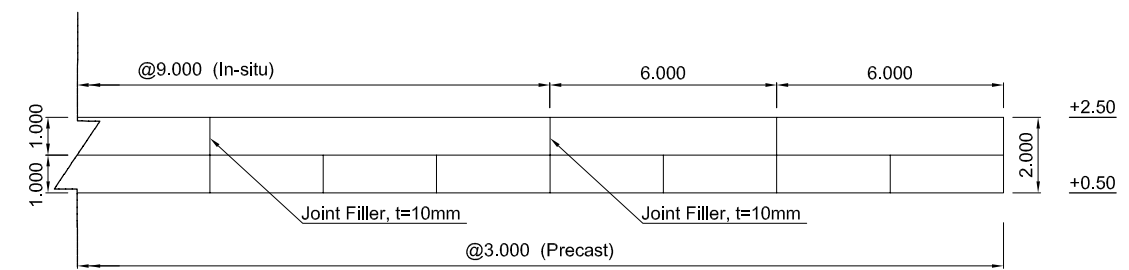


Scale 1:400

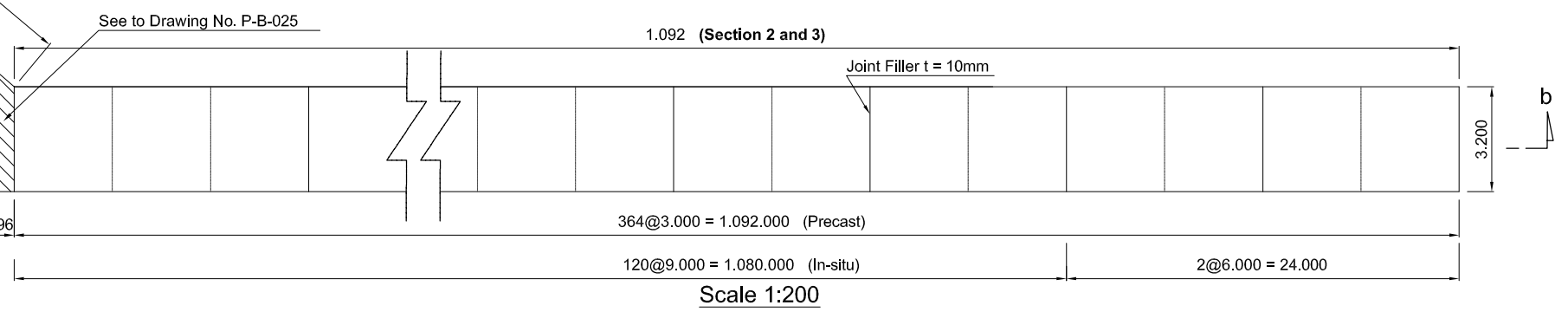


Section a - a
Scale 1:200

Scale 1:200



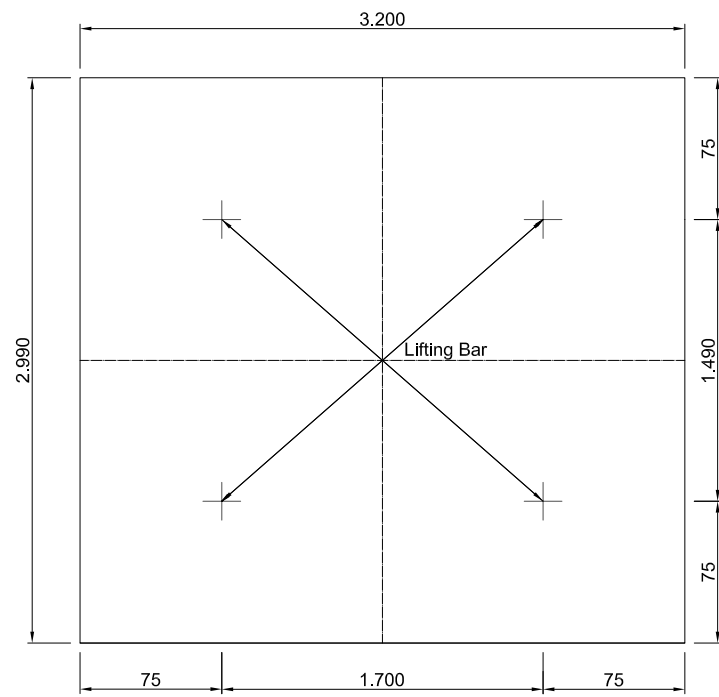
Section b - b
Scale 1:200



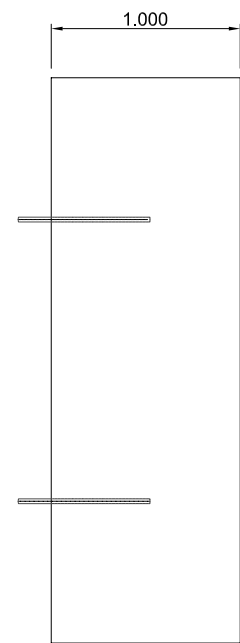
Scale 1:200

Coping Concrete of New Dam Tengah 1

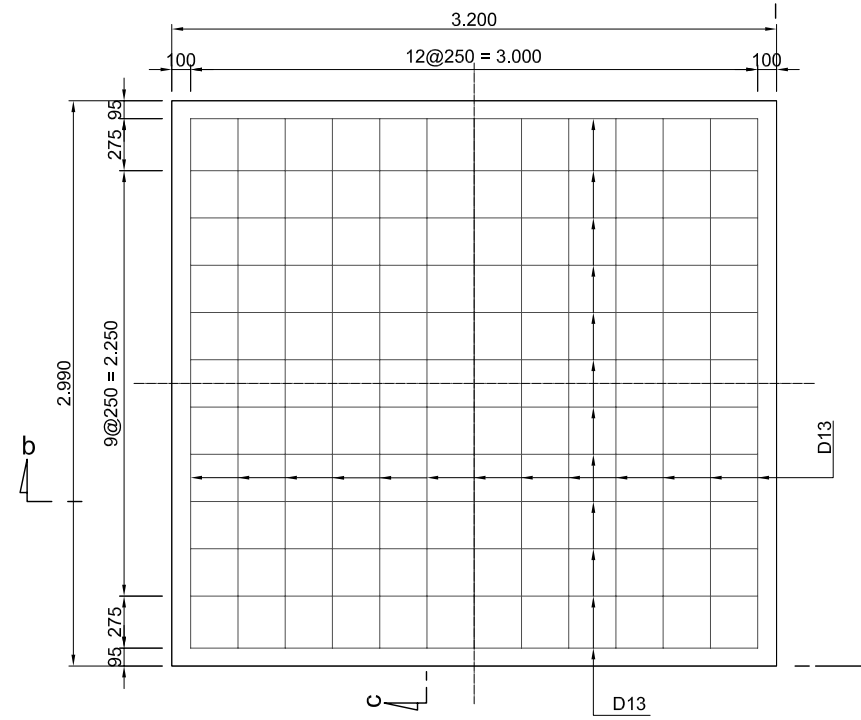
REV. NO.	DATE	COORDINATE	BY	APPROVED	DATE	<p>JAPAN INTERNATIONAL COOPERATION AGENCY (JICA)</p> <p>DIRECTORATE GENERAL OF SEA COMMUNICATION (DGSC)</p>	<p>THE DETAILED DESIGN ON THE URGENT REHABILITATION PROJECT OF THE TANJUNG PRIK PORT IN THE REPUBLIC OF INDONESIA</p> <p>NIPPON KOEI CO., LTD.</p> <p>JAPAN PORT CONSULTANTS, LTD.</p>	PREPARED BY: Y. PRASETYANTO CHECKED BY: M. IMAMURA APPROVED BY: K. OKUBO	SECTION : CHANNEL AND BASIN IMPROVEMENT SUB-SECTION : BREAKWATER TITLE : COPING CONCRETE (1) NEW DAM TENGAH-1	DATE : MARCH 2006 SCALE : AS SHOWN DRAWING NO. : P-B-023



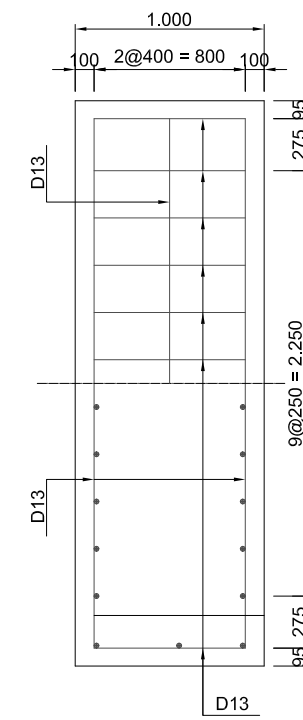
Plan
Scale 1:40



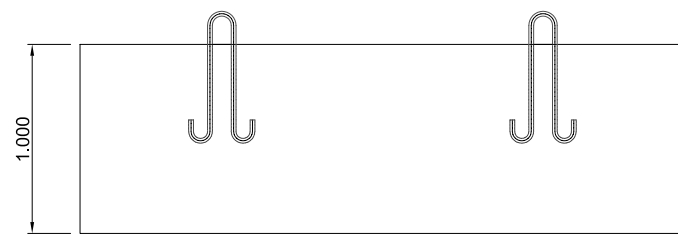
Side View
Scale 1:40



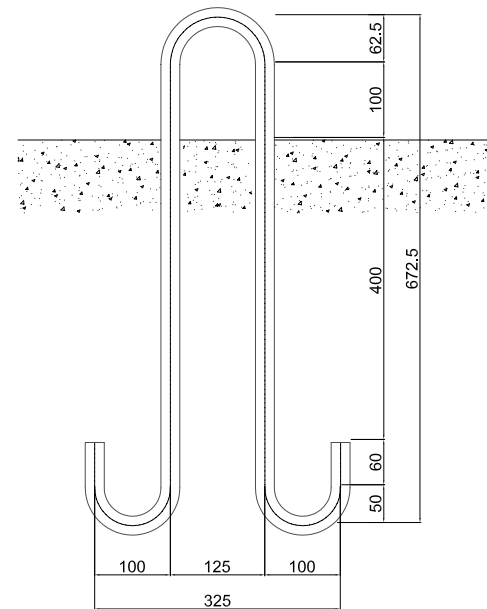
Section a - a
Scale 1:40



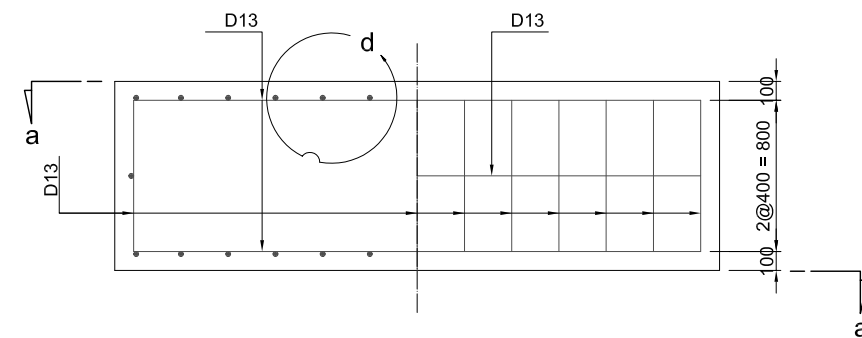
Section c - c
Scale 1:40



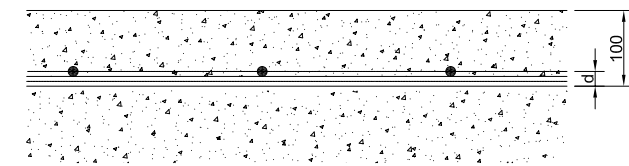
Front View
Scale 1:40



Detail of Lifting Bar, Ø25
Scale 1:10



Section b - b
Scale 1:40



d Detail
Scale 1:10

Shape of Coping

Reinforcement Bar Arrangement

Coping Concrete (Precast A Type) of New Dam Tengah 1

REV. NO.	DATE	COORDINATE	BY	APPROVED	DATE

JICA
JAPAN INTERNATIONAL
COOPERATION AGENCY (JICA)

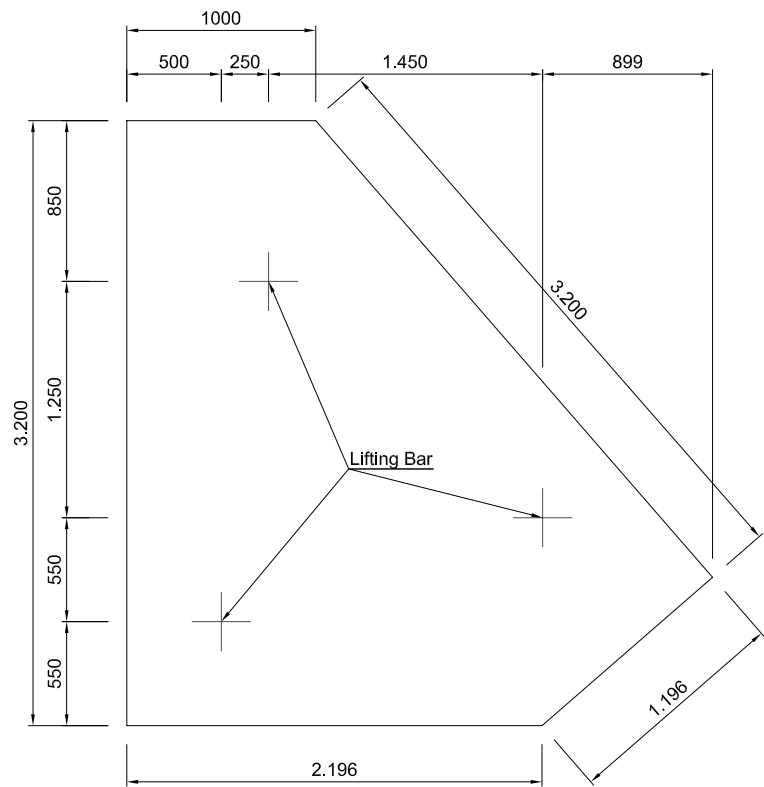
DIRECTORATE GENERAL OF
SEA COMMUNICATION (DGSC)

THE DETAILED DESIGN
ON THE URGENT REHABILITATION PROJECT
OF THE TANJUNG PRIK PORT
IN THE REPUBLIC OF INDONESIA
NIPPON KOEI CO., LTD.
JAPAN PORT CONSULTANTS, LTD.

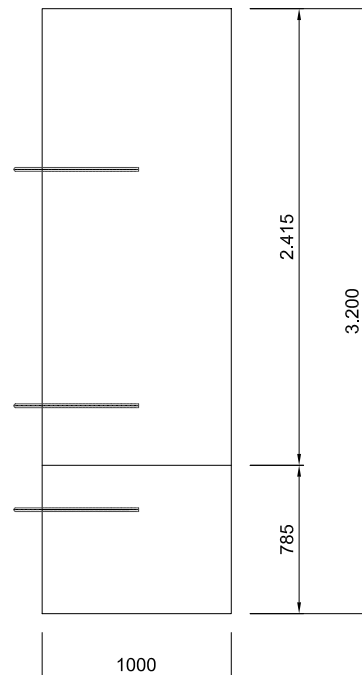
PREPARED BY : *[Signature]*
Y. PRASETYANTO
CHECKED BY : *[Signature]*
M. IMAMURA
APPROVED BY : *[Signature]*
K. OKUBO

SECTION : CHANNEL AND BASIN IMPROVEMENT
SUB-SECTION : BREAKWATER
TITLE : COPING CONCRETE (2)
NEW DAM TENGAH-1

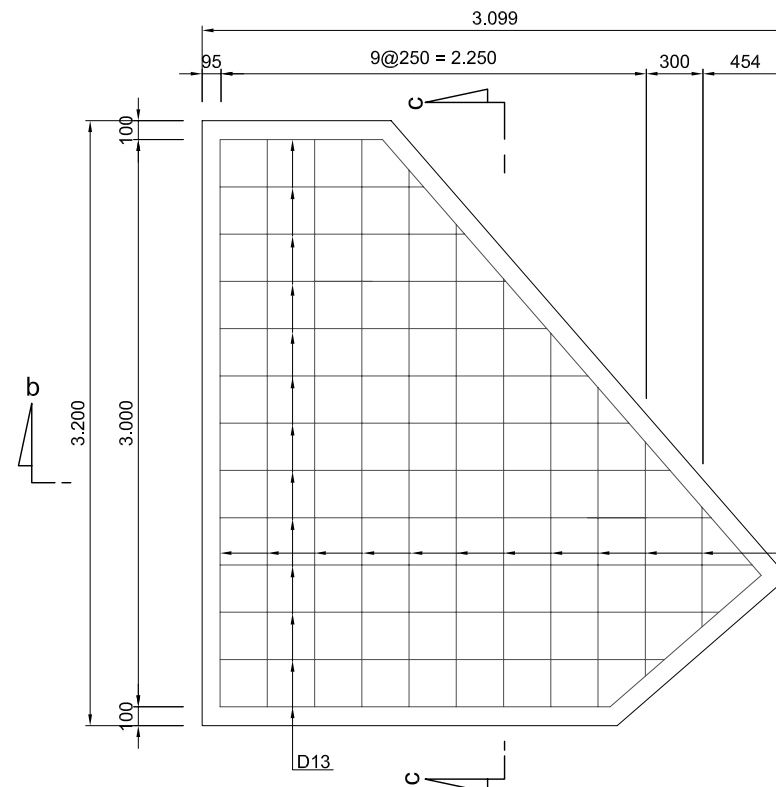
DATE : MARCH 2006
SCALE : AS SHOWN
DRAWING NO. : P-B-024



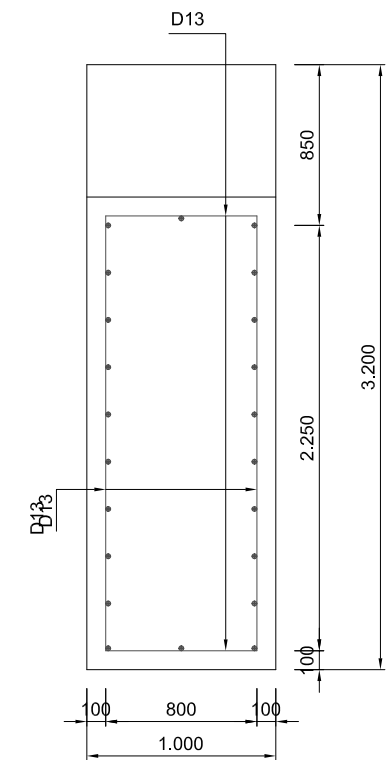
Scale 1:40



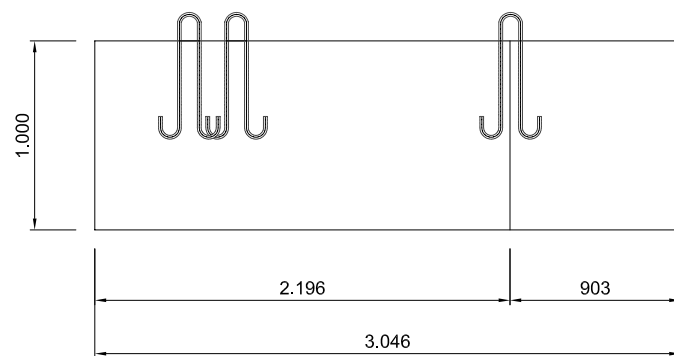
Side View
Scale 1:40



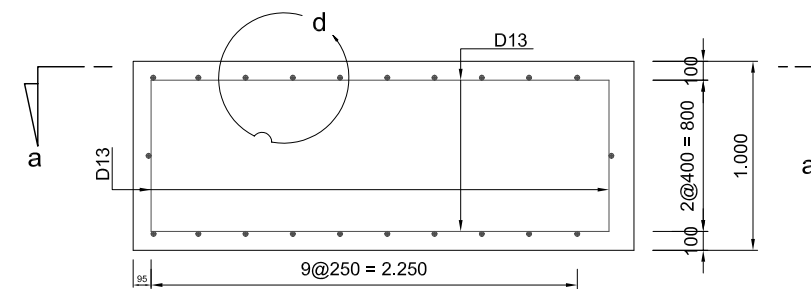
Section a - a
Scale 1:40



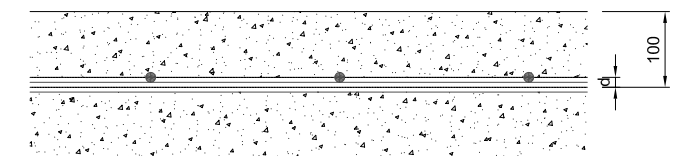
Section c - c
Scale 1:40



Front View
Scale 1:40



Section b - b
Scale 1:40



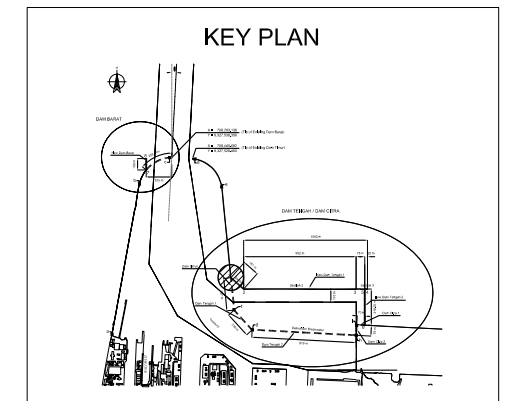
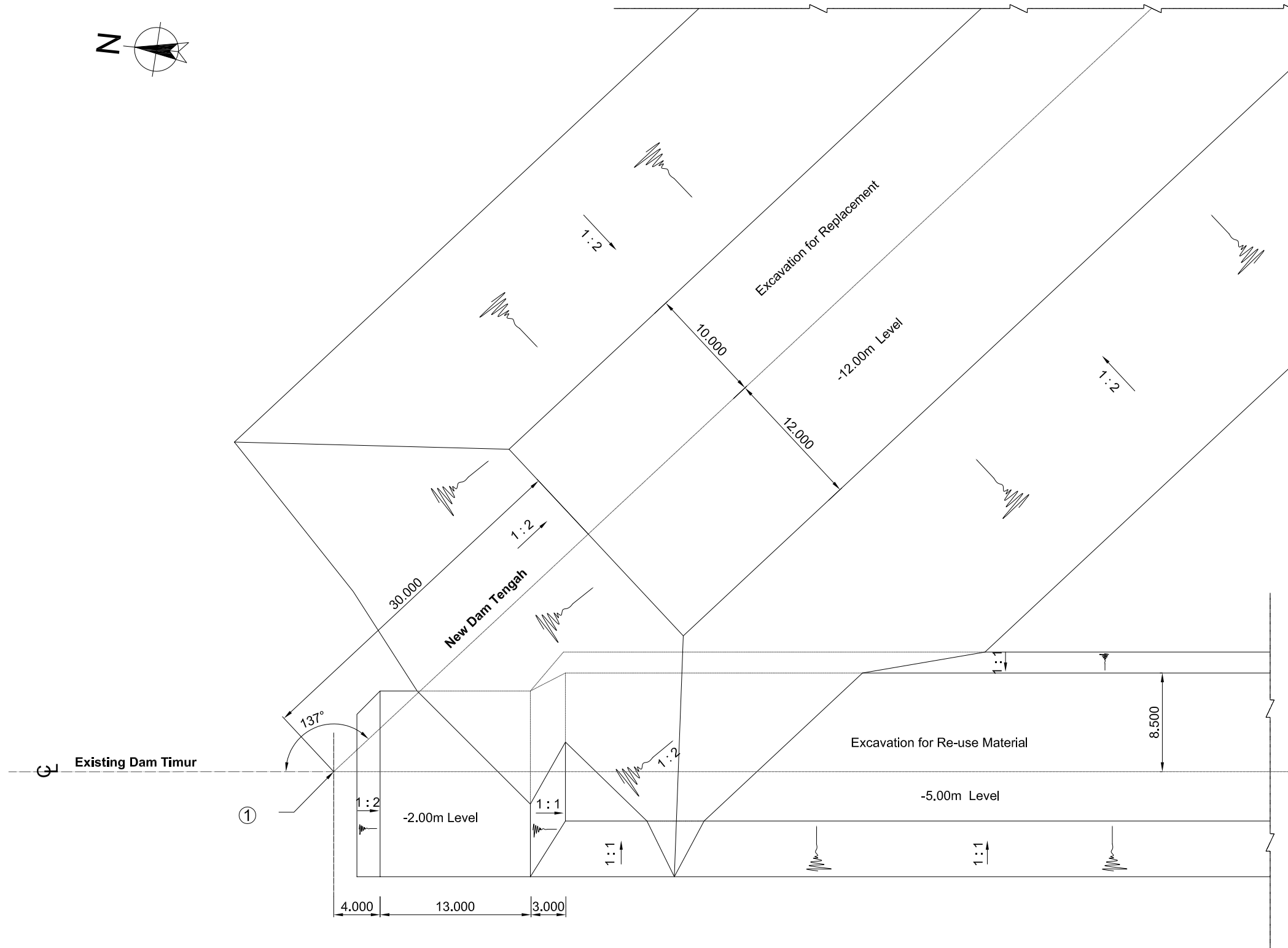
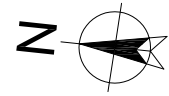
d Detail
Scale 1:10

Shape of Coping

Reinforcement Bar Arrangement

Coping Concrete (Precast B Type) of New Dam Tengah 1

REV. NO.	DATE	COORDINATE	BY	APPROVED	DATE	<p>JAPAN INTERNATIONAL COOPERATION AGENCY (JICA)</p> <p>DIRECTORATE GENERAL OF SEA COMMUNICATION (DGSC)</p>	<p>THE DETAILED DESIGN ON THE URGENT REHABILITATION PROJECT OF THE TANJUNG PRIK PORT IN THE REPUBLIC OF INDONESIA</p> <p>NIPPON KOEI CO., LTD.</p> <p>JAPAN PORT CONSULTANTS, LTD.</p>	PREPARED BY : Y. PRASEYANTO CHECKED BY : M. IMAMURA APPROVED BY : K. OKUBO	SECTION : CHANNEL AND BASIN IMPROVEMENT SUB-SECTION : BREAKWATER TITLE : COPING CONCRETE (3) NEW DAM TENGAH-1	DATE : MARCH 2006 SCALE : AS SHOWN DRAWING NO. : P-B-025



Coordinate		
Point	X (m)	Y (m)
①	708,784.346	9,326,479.170

Note : Refer to Drawing No.P-B-001

Excavation between Existing Dam Timur and New Dam Tengah-1

JAPAN INTERNATIONAL COOPERATION AGENCY (JICA)		THE DETAILED DESIGN ON THE URGENT REHABILITATION PROJECT OF THE TANJUNG PRIK PORT IN THE REPUBLIC OF INDONESIA		PREPARED BY : <i>[Signature]</i> Y. PRASETYANTO CHECKED BY : <i>[Signature]</i> M. IMAMURA APPROVED BY : <i>[Signature]</i> K. OKUBO		SECTION : CHANNEL AND BASIN IMPROVEMENT SUB-SECTION : BREAKWATER TITLE : EXCAVATION BETWEEN EXISTING DAM TIMUR AND NEW DAM TENGAH-1		DATE : MARCH 2006 SCALE : 1 : 400 DRAWING NO. : P-B-026	
DIRECTORATE GENERAL OF SEA COMMUNICATION (DGSC)	NIPPON KOEI CO., LTD. JAPAN PORT CONSULTANTS, LTD.								
REV. NO.	DATE	COORDINATE	BY	APPROVED	DATE				