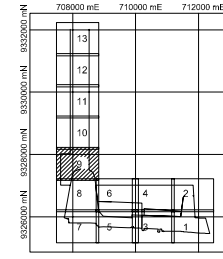


TRANSVERSE MERCATOR PROJECTION



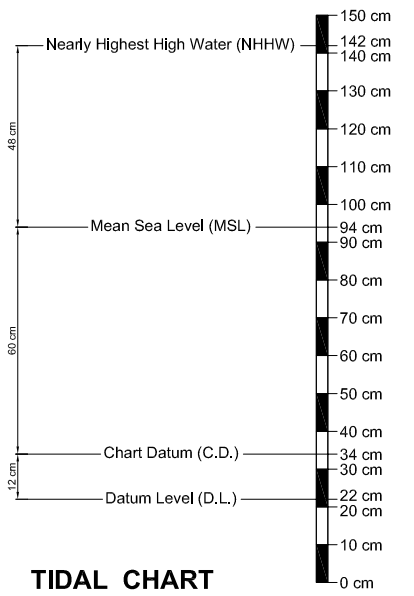
INDEX MAP



LEGEND :

- 12.4 Water Depth (meter C.D.)
- Depth Contour (1 meter interval)

PROJECTION : UTM
SPHEROID : WGS-84



REV. NO.	DATE	COORDINATE	BY	APPROVED	DATE

JICA JAPAN INTERNATIONAL COOPERATION AGENCY (JICA)

DIRECTORATE GENERAL OF SEA COMMUNICATION (DGSC)

THE DETAILED DESIGN ON THE URGENT REHABILITATION PROJECT OF THE TANJUNG PRIOK PORT IN THE REPUBLIC OF INDONESIA

NIPPON KOEI CO., LTD.
JAPAN PORT CONSULTANTS, LTD.

PREPARED BY: *[Signature]*
Y. PRASETYANTO

CHECKED BY: *[Signature]*
M. IMAMURA

APPROVED BY: *[Signature]*
K. OKUBO

SECTION : CHANNEL AND BASIN IMPROVEMENT

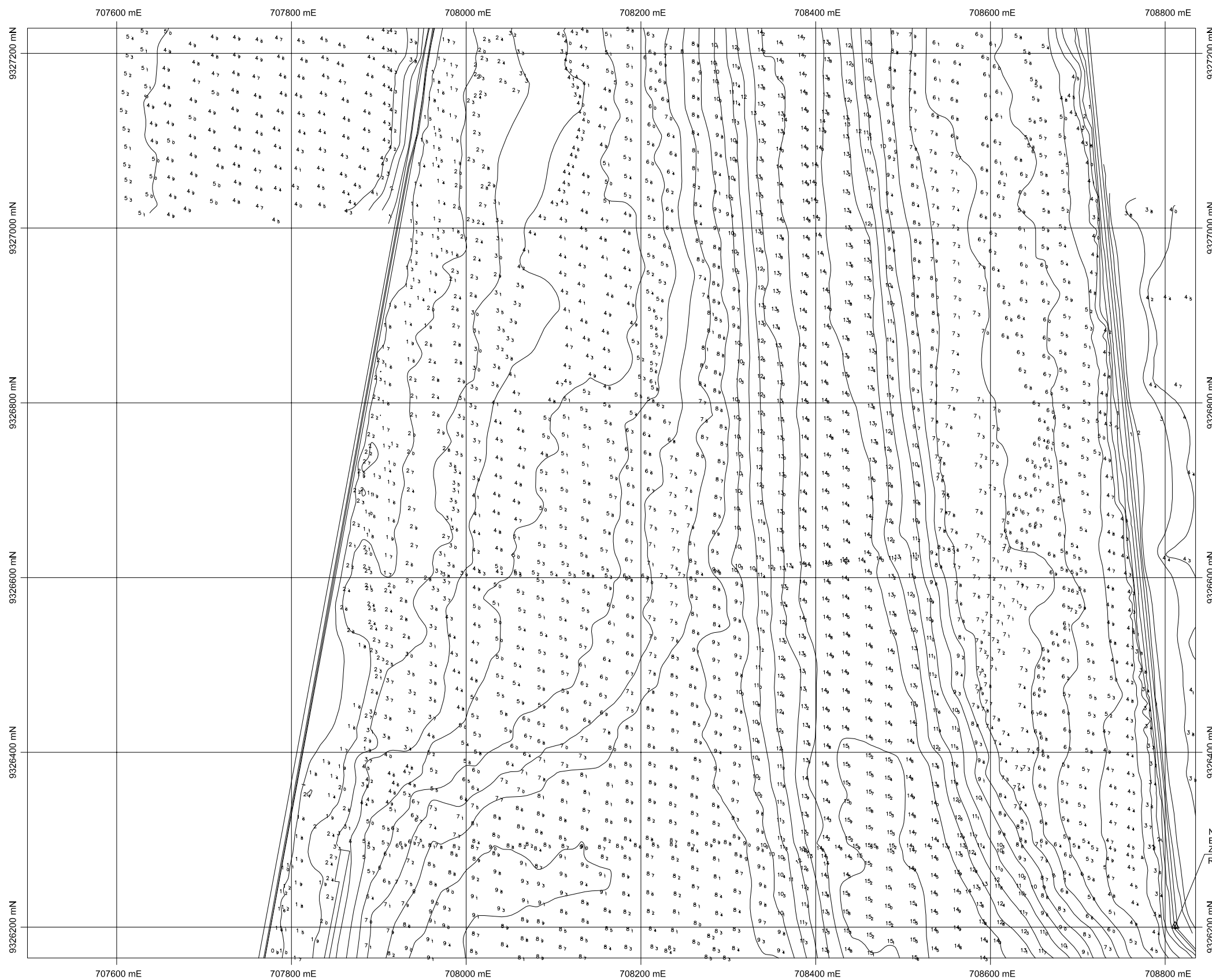
SUB-SECTION : GENERAL

TITLE : Outer Channel Area (5)/ Inner Channel Area (1)

DATE : MARCH 2006

SCALE : 1:5000

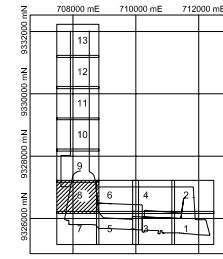
DRAWING NO. : P-G-015



TRANSVERSE MERCATOR PROJECTION



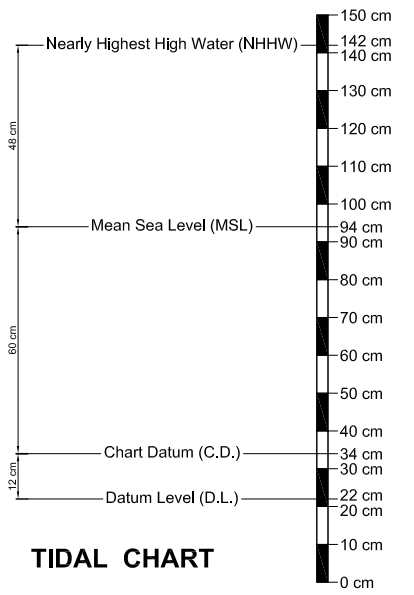
INDEX MAP



LEGEND :

- 12.4 Water Depth (meter C.D.)
- Depth Contour (1 meter interval)

PROJECTION : UTM
SPHEROID : WGS-84



REV. NO.	DATE	COORDINATE	BY	APPROVED	DATE

JICA
JAPAN INTERNATIONAL COOPERATION AGENCY (JICA)

DIRECTORATE GENERAL OF SEA COMMUNICATION (DGSC)

THE DETAILED DESIGN
ON THE URGENT REHABILITATION PROJECT
OF THE TANJUNG PRIOK PORT
IN THE REPUBLIC OF INDONESIA

NIPPON KOEI CO., LTD.
JAPAN PORT CONSULTANTS, LTD.

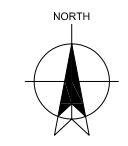
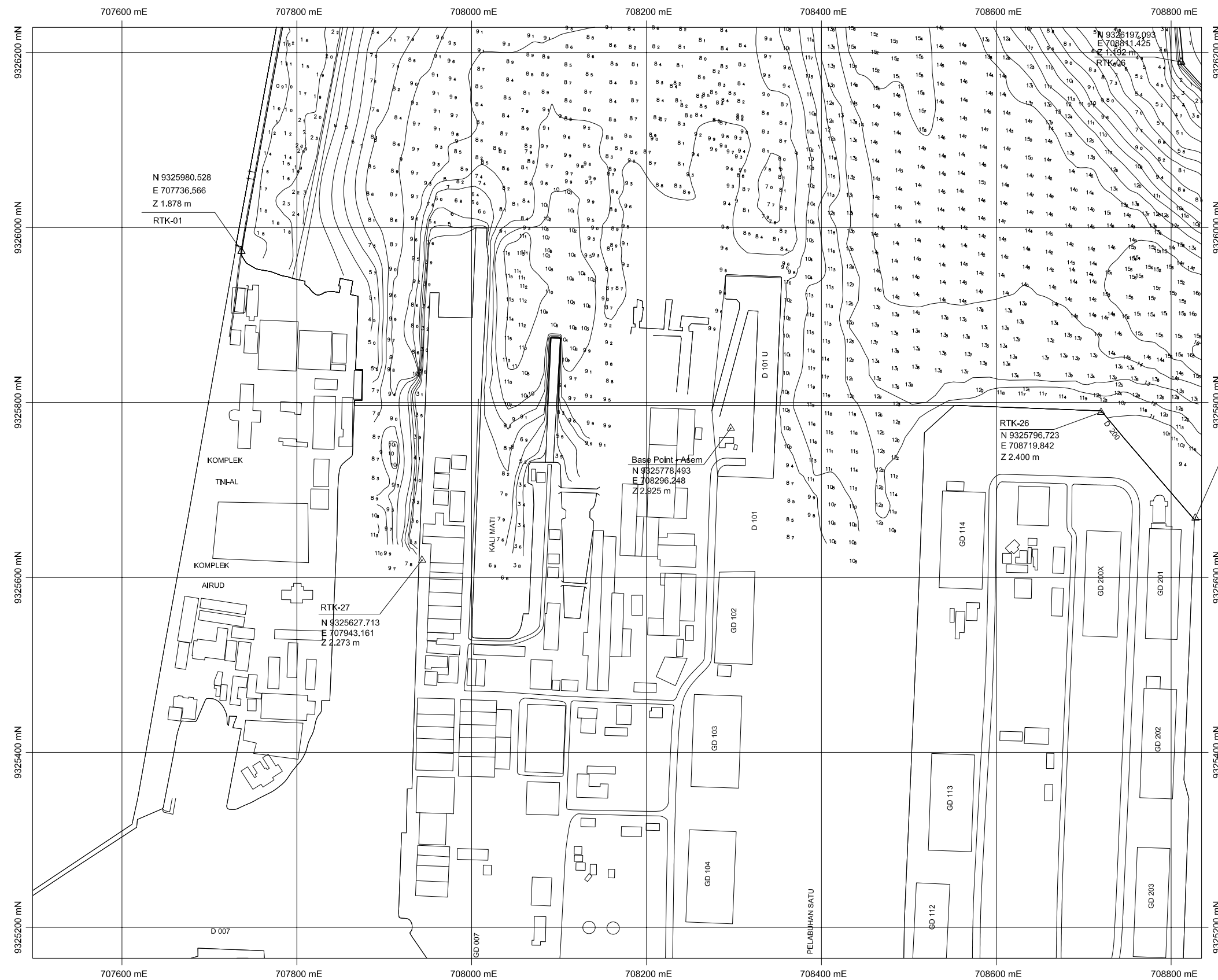
PREPARED BY : *[Signature]*
Y. PRASETYANTO

CHECKED BY : *[Signature]*
M. IMAMURA

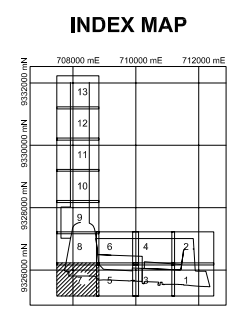
APPROVED BY : *[Signature]*
K. OKUBO

SECTION : CHANNEL AND BASIN IMPROVEMENT
SUB-SECTION : GENERAL
TITLE : Inner Channel Area (2)

DATE : MARCH 2006
SCALE : 1:5000
DRAWING NO. : P-G-016

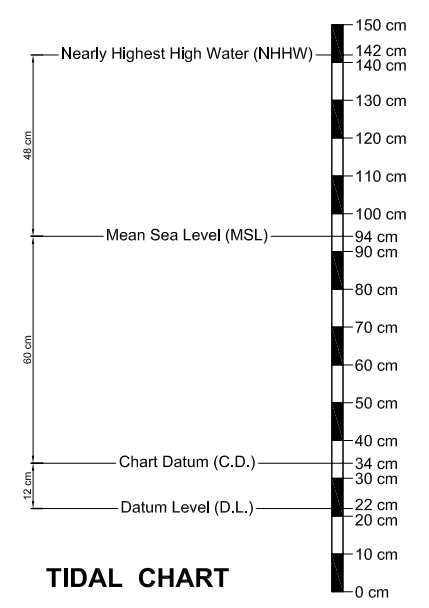


TRANSVERSE MERCATOR PROJECTION
 0 50 100 150 200 250m



LEGEND :
 12.4 Water Depth (meter C.D.)
 -5- Depth Contour (1 meter interval)

PROJECTION : UTM
SPHEROID : WGS-84



REV. NO.	DATE	COORDINATE	BY	APPROVED	DATE

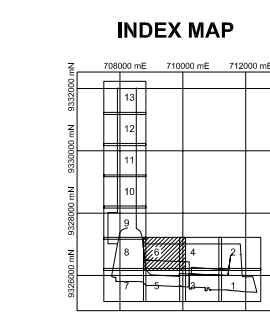
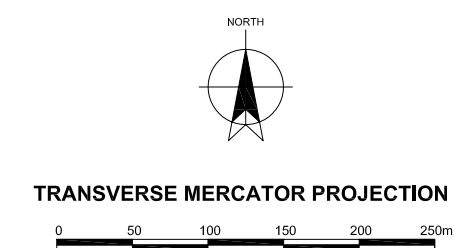
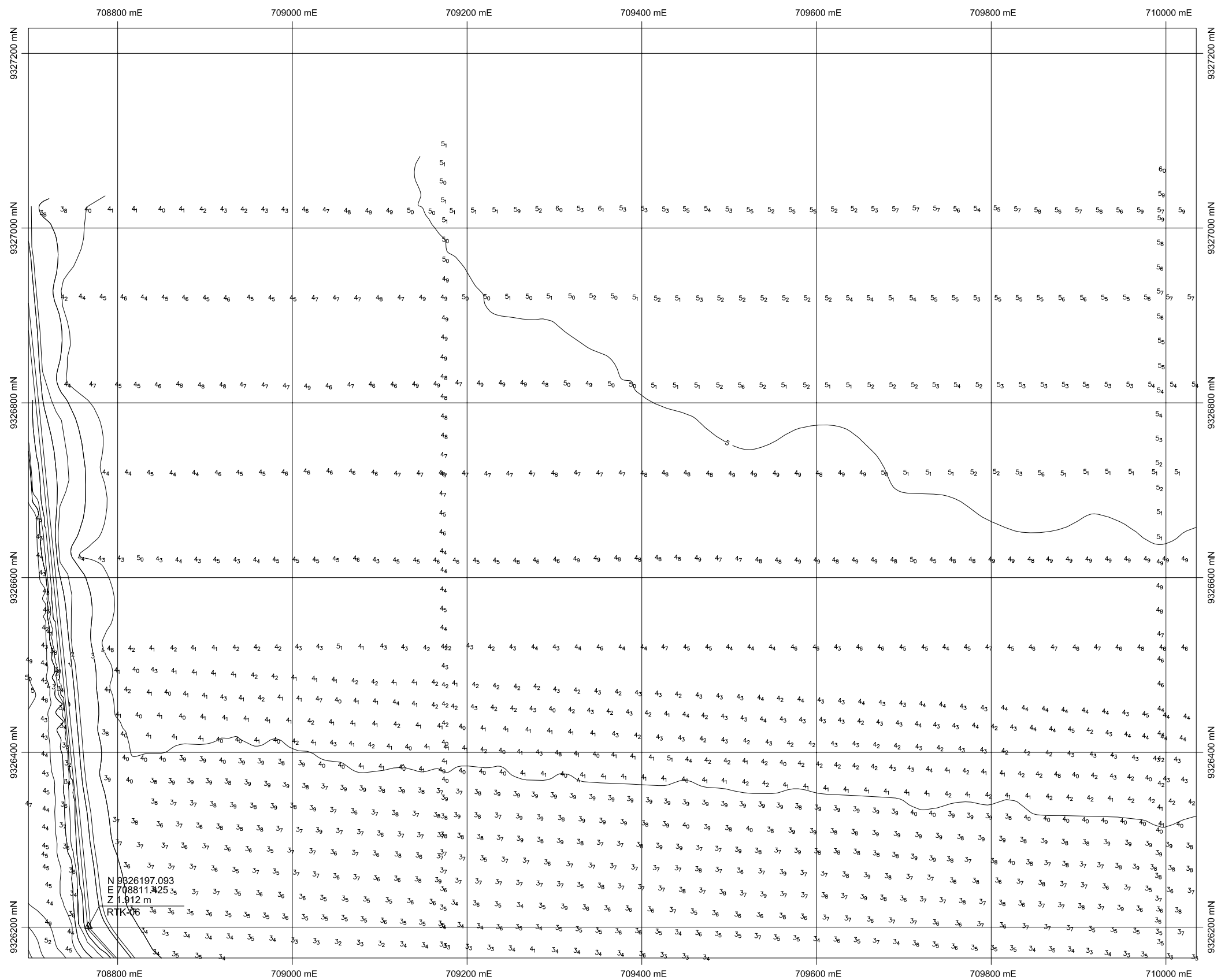
JICA
 JAPAN INTERNATIONAL COOPERATION AGENCY (JICA)
DIRECTORATE GENERAL OF SEA COMMUNICATION (DGSC)

THE DETAILED DESIGN ON THE URGENT REHABILITATION PROJECT OF THE TANJUNG PRIOK PORT IN THE REPUBLIC OF INDONESIA
NIPPON KOEI CO., LTD.
JAPAN PORT CONSULTANTS, LTD.

PREPARED BY : *[Signature]*
 Y. PRASETYANTO
 CHECKED BY : *[Signature]*
 M. IMAMURA
 APPROVED BY : *[Signature]*
 K. OKUBO

SECTION : CHANNEL AND BASIN IMPROVEMENT
 SUB-SECTION : GENERAL
 TITLE : Inner Channel Area (3)

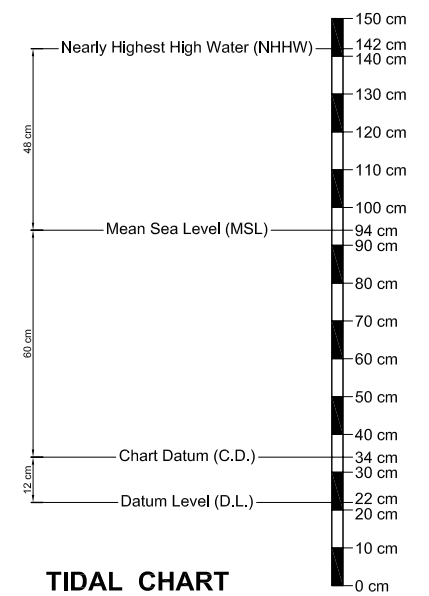
DATE : MARCH 2006
 SCALE : 1:5000
 DRAWING NO. : P-G-017



LEGEND :

- 12.4 Water Depth (meter C.D.)
- 5- Depth Contour (1 meter interval)

PROJECTION : UTM
SPHEROID : WGS-84



N 9326197.093
E 708811.425
Z 1.912 m
RTK-06

REV. NO.	DATE	COORDINATE	BY	APPROVED	DATE

JICA
JAPAN INTERNATIONAL COOPERATION AGENCY (JICA)

DIRECTORATE GENERAL OF SEA COMMUNICATION (DGSC)

THE DETAILED DESIGN
ON THE URGENT REHABILITATION PROJECT
OF THE TANJUNG PRIOK PORT
IN THE REPUBLIC OF INDONESIA

NIPPON KOEI CO., LTD.
JAPAN PORT CONSULTANTS, LTD.

PREPARED BY : *[Signature]*
Y. PRASETYANTO

CHECKED BY : *[Signature]*
M. IMAMURA

APPROVED BY : *[Signature]*
K. OKUBO

SECTION : CHANNEL AND BASIN IMPROVEMENT
SUB-SECTION : GENERAL
TITLE : Turning Basin Area (1)

DATE : MARCH 2006
SCALE : 1:5000
DRAWING NO. : P-G-018