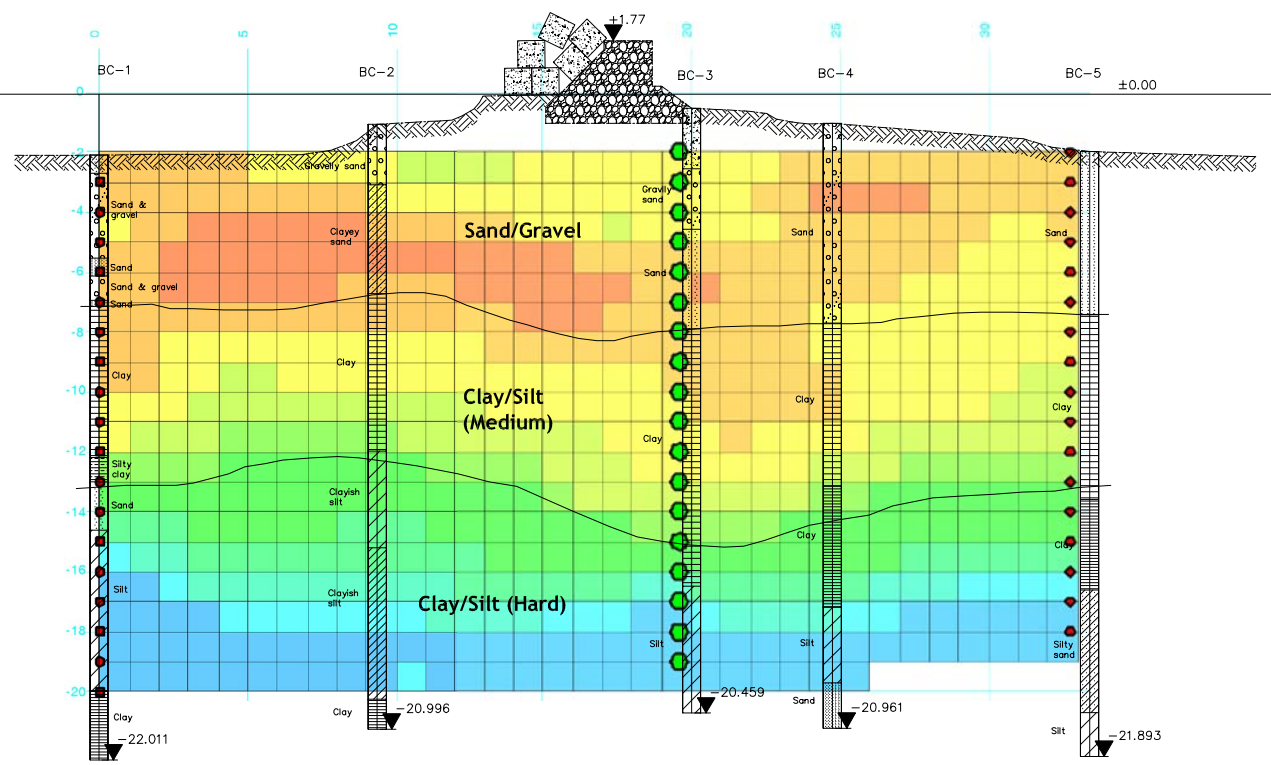
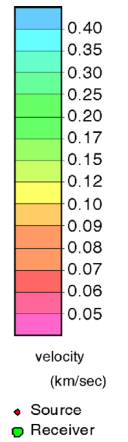
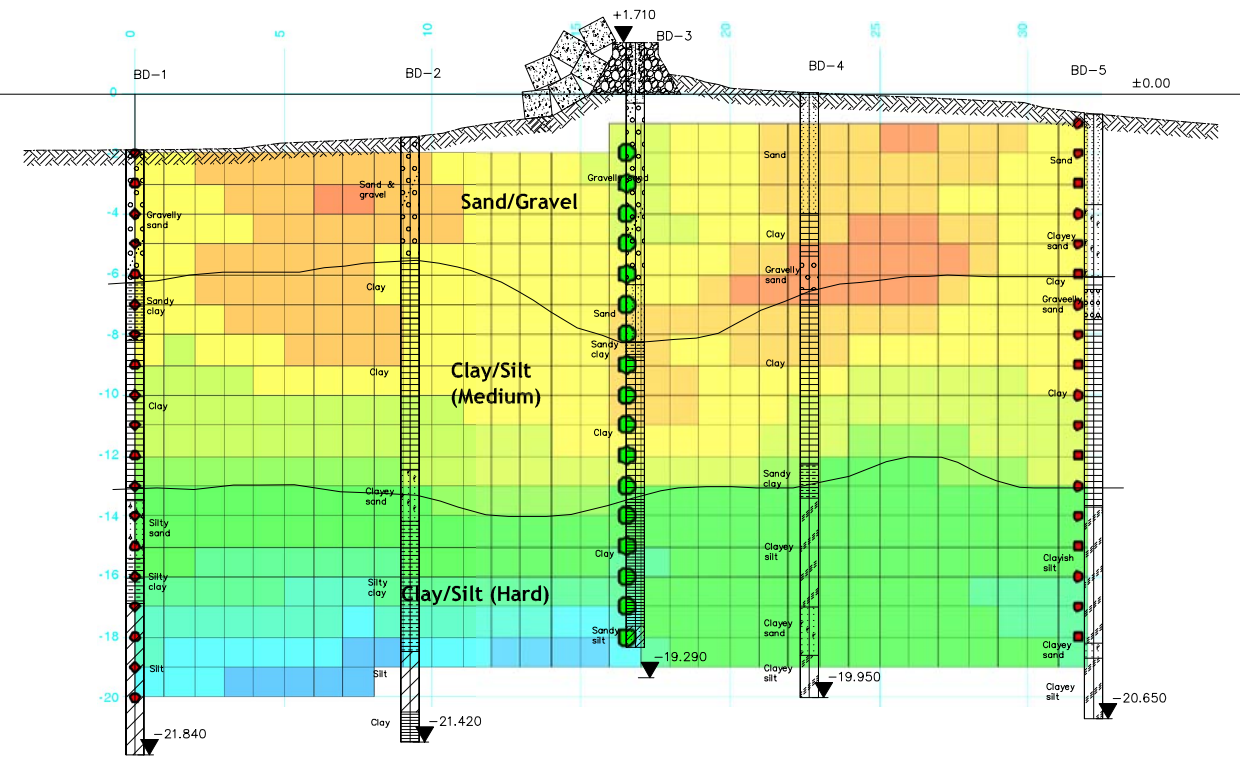


KEY PLAN



Section at T-E



Section at T-F

"SEISMIC TOMOGRAPHY"

NOTE :  
Elevation in meter M.S.L.

REV. NO.	DATE	COORDINATE	BY	APPROVED	DATE

**JICA**  
JAPAN INTERNATIONAL COOPERATION AGENCY (JICA)  
DIRECTORATE GENERAL OF SEA COMMUNICATION (DGSC)

THE DETAILED DESIGN  
ON THE URGENT REHABILITATION PROJECT  
OF THE TANJUNG PRIOK PORT  
IN THE REPUBLIC OF INDONESIA  
NIPPON KOEI CO., LTD.  
JAPAN PORT CONSULTANTS, LTD.

PREPARED BY :  
*A. E. Sulistiadi*  
A. E. SULISTIADI  
CHECKED BY :  
*M. Shiguro*  
M. SHIGURO  
APPROVED BY :  
*K. Okubo*  
K. OKUBO

SECTION : CHANNEL AND BASIN IMPROVEMENT  
SUB-SECTION : GENERAL  
TITLE : Geological Profile (6)

DATE : MARCH 2006  
SCALE : 1:250  
DRAWING NO. : P-G-009



**REMARKS**

- Demolition of Breakwater
- Construction of New Dam
- Planned Dredging Area

**Bathymetric Survey**

- ▨ 25 m Interval : 567 ha
- ▨ 50 m Interval : 125 ha
- ▨ 100 m Interval : 217 ha

BM - P1.II.KPO1

**SCALE :**

0 250 500 1,000 1,250 1,500m

BM - P1.II.KPO1 (details see drawing no. P - G - 006)

REV. NO.	DATE	COORDINATE	BY	APPROVED	DATE

**JICA**  
 JAPAN INTERNATIONAL COOPERATION AGENCY (JICA)  
 DIRECTORATE GENERAL OF SEA COMMUNICATION (DGSC)

THE DETAILED DESIGN  
 ON THE URGENT REHABILITATION PROJECT  
 OF THE TANJUNG PRIOK PORT  
 IN THE REPUBLIC OF INDONESIA

**NIPPON KOEI CO., LTD.**  
**JAPAN PORT CONSULTANTS, LTD.**

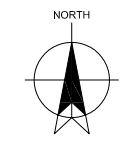
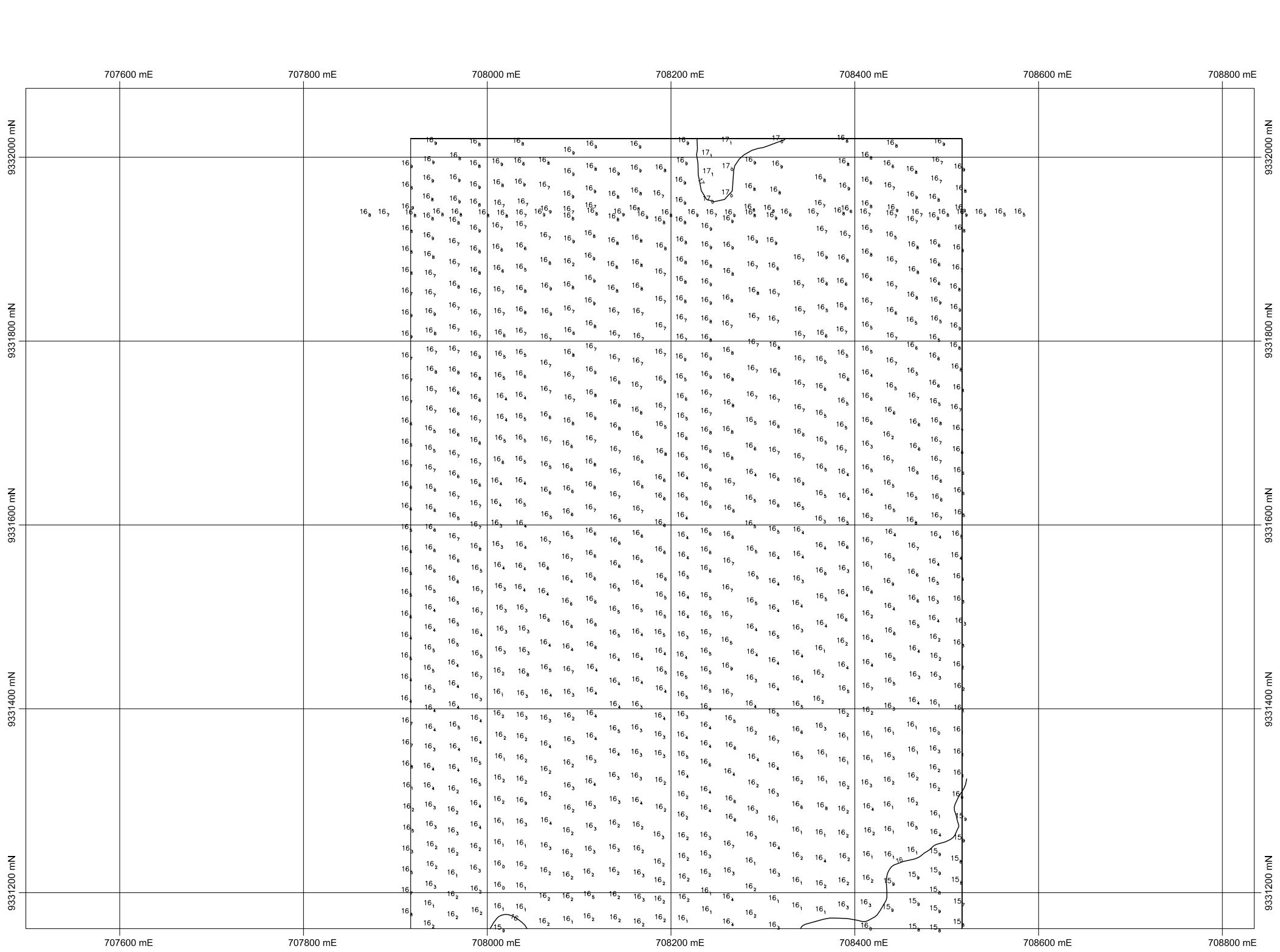
PREPARED BY :  
*A. E. Sulistiadi*  
 A. E. SULISTIADI

CHECKED BY :  
*M. Shiguro*  
 M. SHIGURO

APPROVED BY :  
*K. Okubo*  
 K. OKUBO

SECTION : CHANNEL AND BASIN IMPROVEMENT  
 SUB-SECTION : GENERAL  
 TITLE : Bathymetrical Information Plan

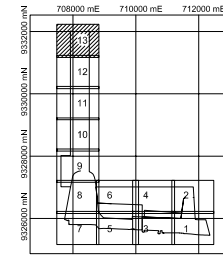
DATE : MARCH 2006  
 SCALE : 1:25000  
 DRAWING NO. : P-G-010



TRANSVERSE MERCATOR PROJECTION



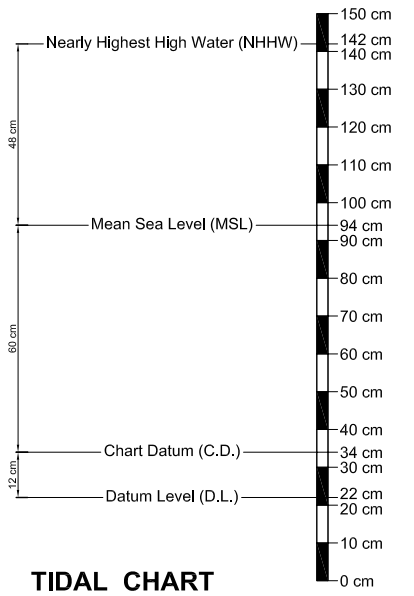
INDEX MAP



LEGEND :

- 12.4 Water Depth (meter C.D.)
- 5- Depth Contour (1 meter interval)

PROJECTION : UTM  
SPHEROID : WGS-84



TIDAL CHART

REV. NO.	DATE	COORDINATE	BY	APPROVED	DATE

**JICA**  
JAPAN INTERNATIONAL COOPERATION AGENCY (JICA)

**DIRECTORATE GENERAL OF SEA COMMUNICATION (DGSC)**

THE DETAILED DESIGN  
ON THE URGENT REHABILITATION PROJECT  
OF THE TANJUNG PRIOK PORT  
IN THE REPUBLIC OF INDONESIA

**NIPPON KOEI CO., LTD.**  
**JAPAN PORT CONSULTANTS, LTD.**

PREPARED BY : *[Signature]*  
Y. PRASETYANTO

CHECKED BY : *[Signature]*  
M. IMAMURA

APPROVED BY : *[Signature]*  
K. OKUBO

SECTION : CHANNEL AND BASIN IMPROVEMENT

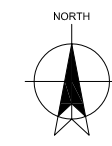
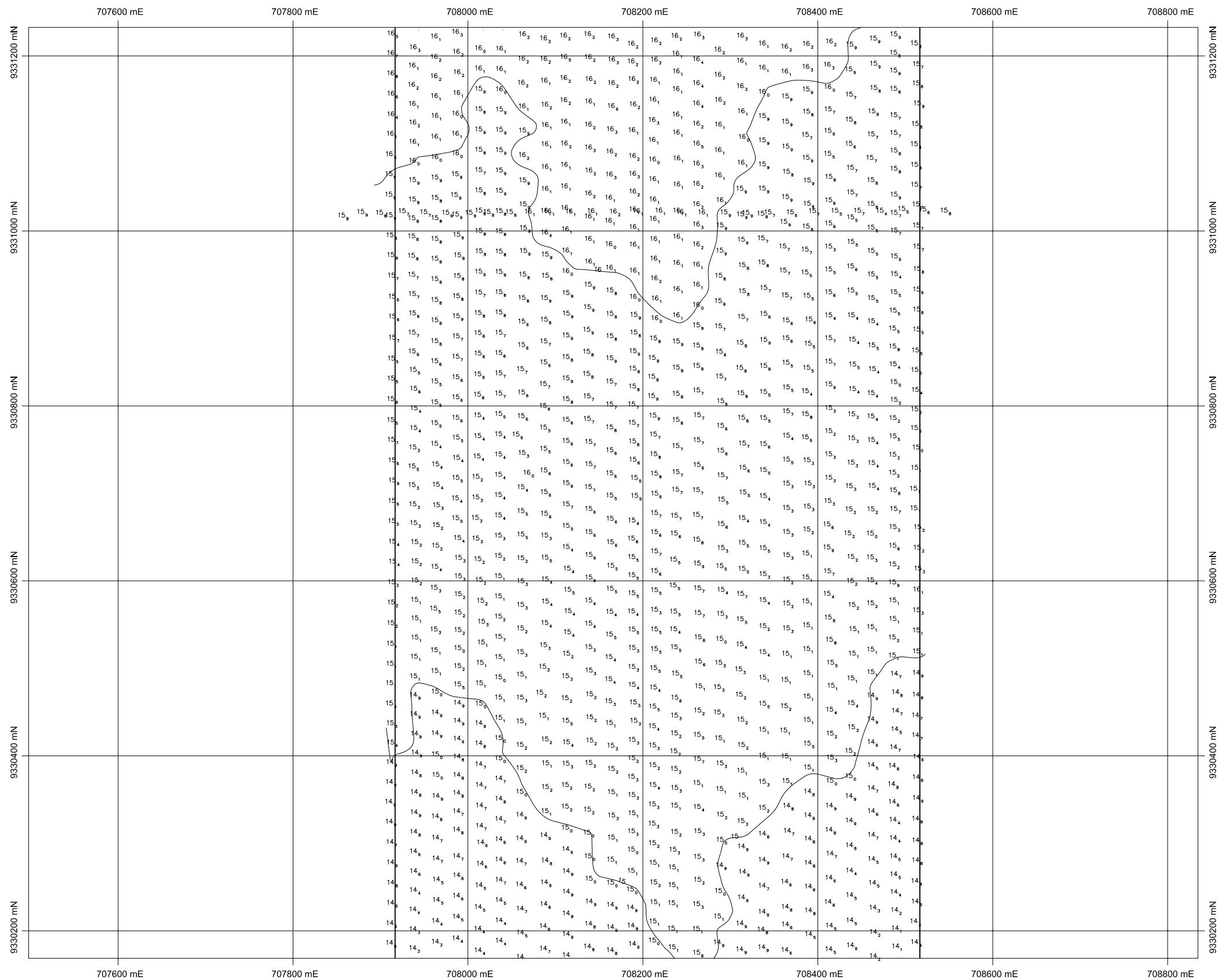
SUB-SECTION : GENERAL

TITLE : Outer Channel Area (1)

DATE : MARCH 2006

SCALE : 1:5000

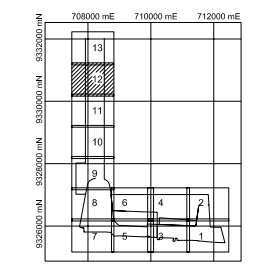
DRAWING NO. : P-G-011



TRANSVERSE MERCATOR PROJECTION



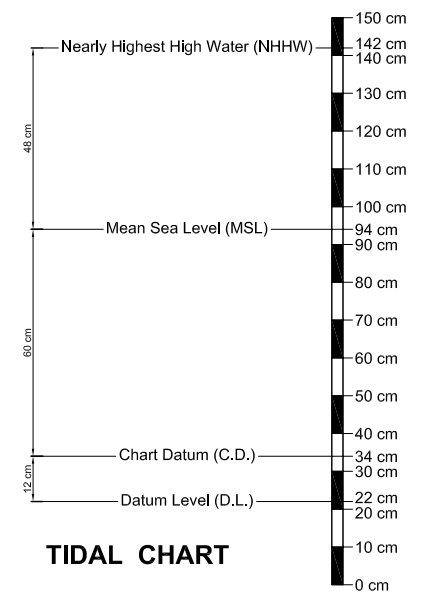
INDEX MAP



LEGEND :

- 12.4 Water Depth (meter C.D.)
- 5— Depth Contour (1 meter interval)

PROJECTION : UTM  
 SPHEROID : WGS-84



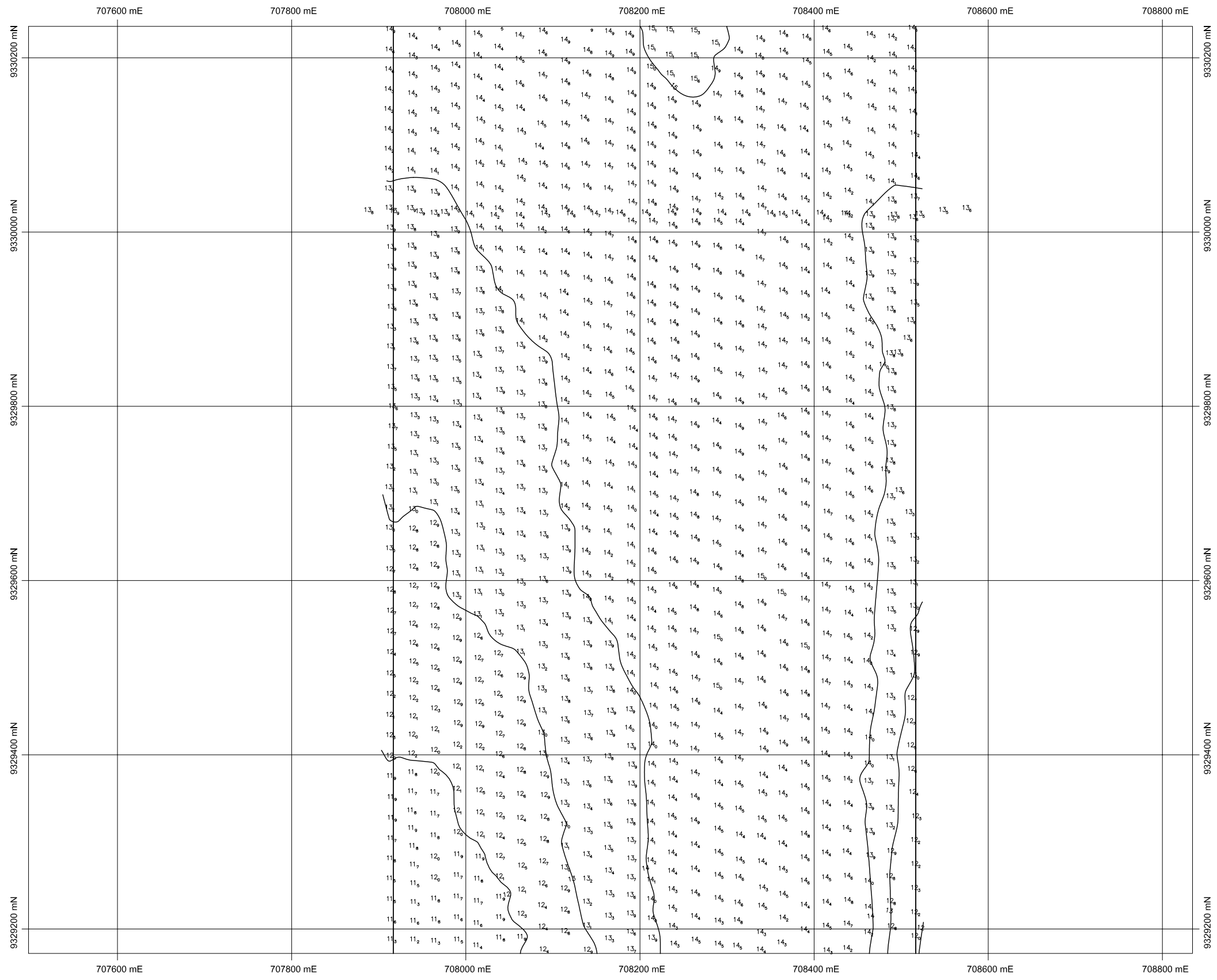
REV. NO.	DATE	COORDINATE	BY	APPROVED	DATE

**JICA**  
 JAPAN INTERNATIONAL COOPERATION AGENCY (JICA)  
 DIRECTORATE GENERAL OF SEA COMMUNICATION (DGSC)

THE DETAILED DESIGN  
 ON THE URGENT REHABILITATION PROJECT  
 OF THE TANJUNG PRIOK PORT  
 IN THE REPUBLIC OF INDONESIA  
 NIPPON KOEI CO., LTD.  
 JAPAN PORT CONSULTANTS, LTD.

PREPARED BY : *[Signature]*  
 Y. PRAESTYANTO  
 CHECKED BY : *[Signature]*  
 M. IMAMURA  
 APPROVED BY : *[Signature]*  
 K. OKUBO

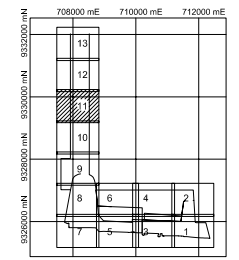
SECTION : CHANNEL AND BASIN IMPROVEMENT  
 SUB-SECTION : GENERAL  
 TITLE : Outer Channel Area (2)  
 DATE : MARCH 2006  
 SCALE : 1:5000  
 DRAWING NO. : P-G-012



TRANSVERSE MERCATOR PROJECTION



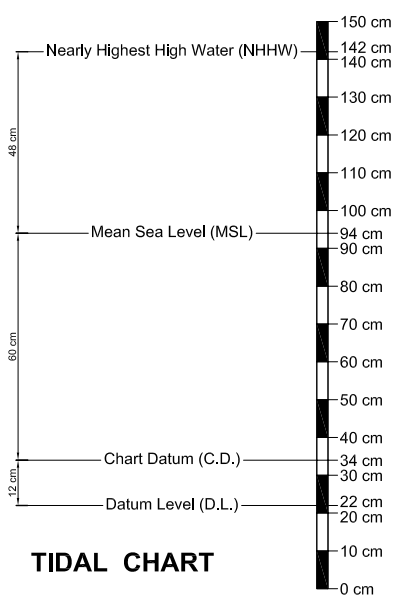
INDEX MAP



LEGEND :

- 12.4 Water Depth (meter C.D.)
- 5— Depth Contour (1 meter interval)

PROJECTION : UTM  
SPHEROID : WGS-84



REV. NO.	DATE	COORDINATE	BY	APPROVED	DATE

**JICA**  
JAPAN INTERNATIONAL COOPERATION AGENCY (JICA)

**DIRECTORATE GENERAL OF SEA COMMUNICATION (DGSC)**

THE DETAILED DESIGN  
ON THE URGENT REHABILITATION PROJECT  
OF THE TANJUNG PRIOK PORT  
IN THE REPUBLIC OF INDONESIA

**NIPPON KOEI CO., LTD.**  
**JAPAN PORT CONSULTANTS, LTD.**

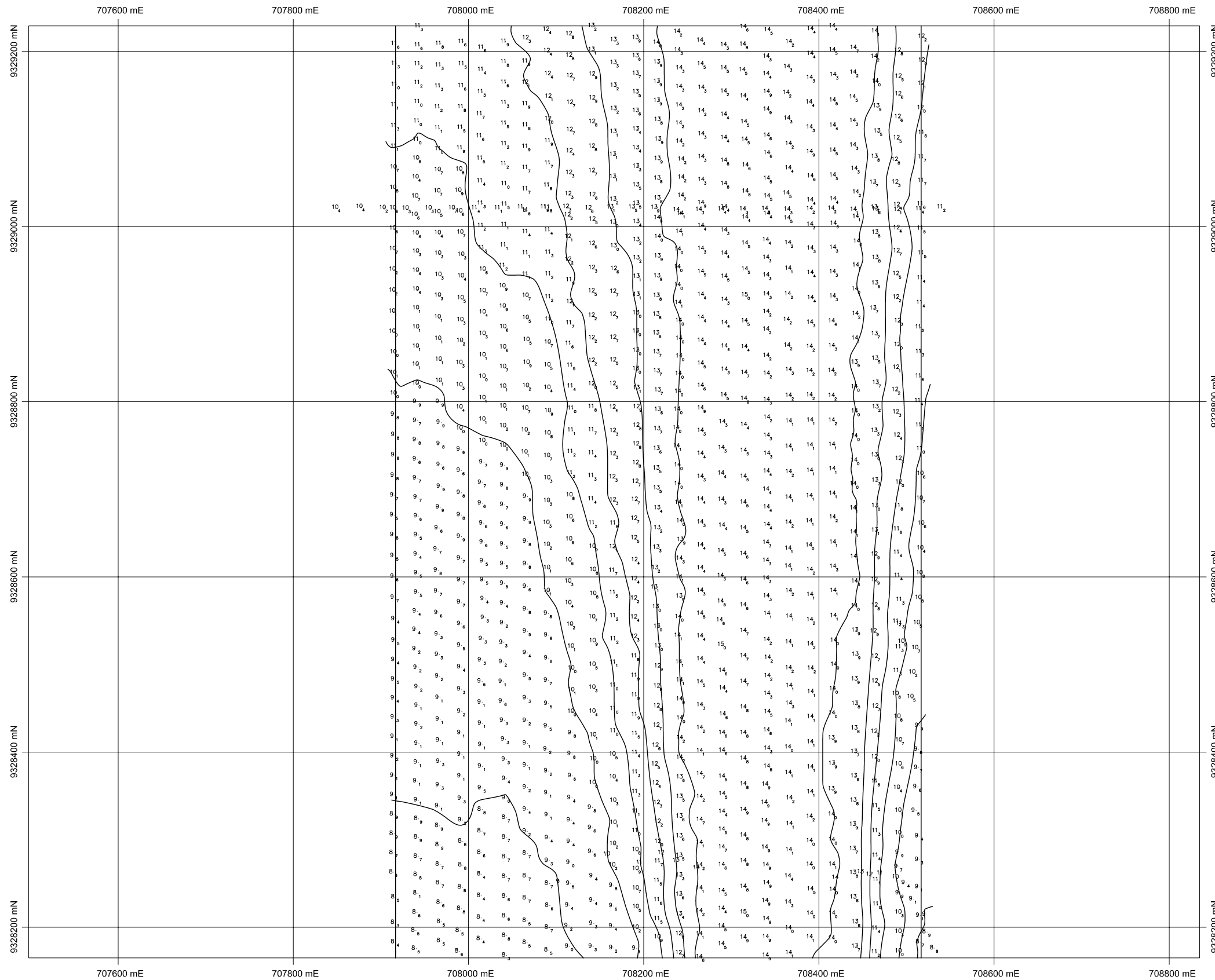
PREPARED BY : *[Signature]*  
Y. PRAESTYANTO

CHECKED BY : *[Signature]*  
M. IMAMURA

APPROVED BY : *[Signature]*  
K. OKUBO

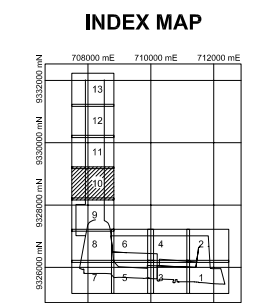
SECTION : CHANNEL AND BASIN IMPROVEMENT  
SUB-SECTION : GENERAL  
TITLE : Outer Channel Area (3)

DATE : MARCH 2006  
SCALE : 1:5000  
DRAWING NO. : P-G-013



**TRANSVERSE MERCATOR PROJECTION**

0 50 100 150 200 250m



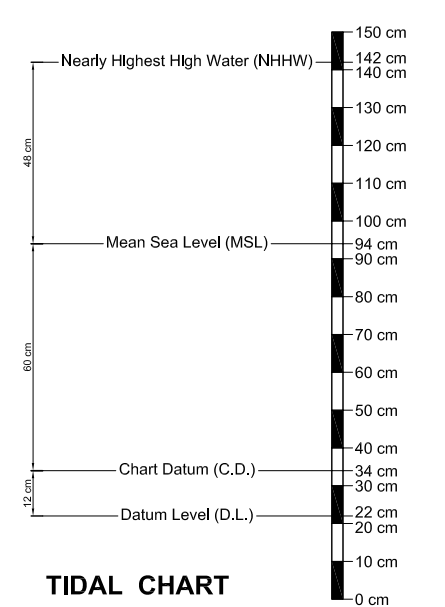
**LEGEND :**

12.4 Water Depth (meter C.D.)

—5— Depth Contour (1 meter interval)

PROJECTION : UTM

SPHEROID : WGS-84



REV. NO.	DATE	COORDINATE	BY	APPROVED	DATE

**JICA** JAPAN INTERNATIONAL COOPERATION AGENCY (JICA)

DIRECTORATE GENERAL OF SEA COMMUNICATION (DGSC)

THE DETAILED DESIGN ON THE URGENT REHABILITATION PROJECT OF THE TANJUNG PRIOK PORT IN THE REPUBLIC OF INDONESIA

NIPPON KOEI CO., LTD.

JAPAN PORT CONSULTANTS, LTD.

PREPARED BY : *[Signature]*

CHECKED BY : *[Signature]*

APPROVED BY : *[Signature]*

M. IMAMURA

K. OKUBO

SECTION : CHANNEL AND BASIN IMPROVEMENT

SUB-SECTION : GENERAL

TITLE : Outer Channel Area (4)

DATE : MARCH 2006

SCALE : 1:5000

DRAWING NO. : P-G-014