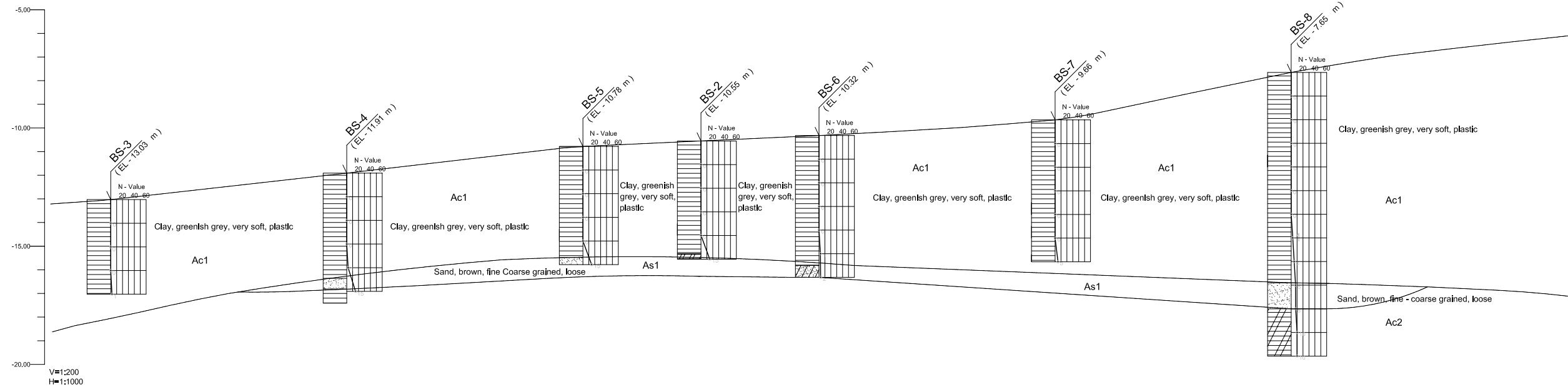


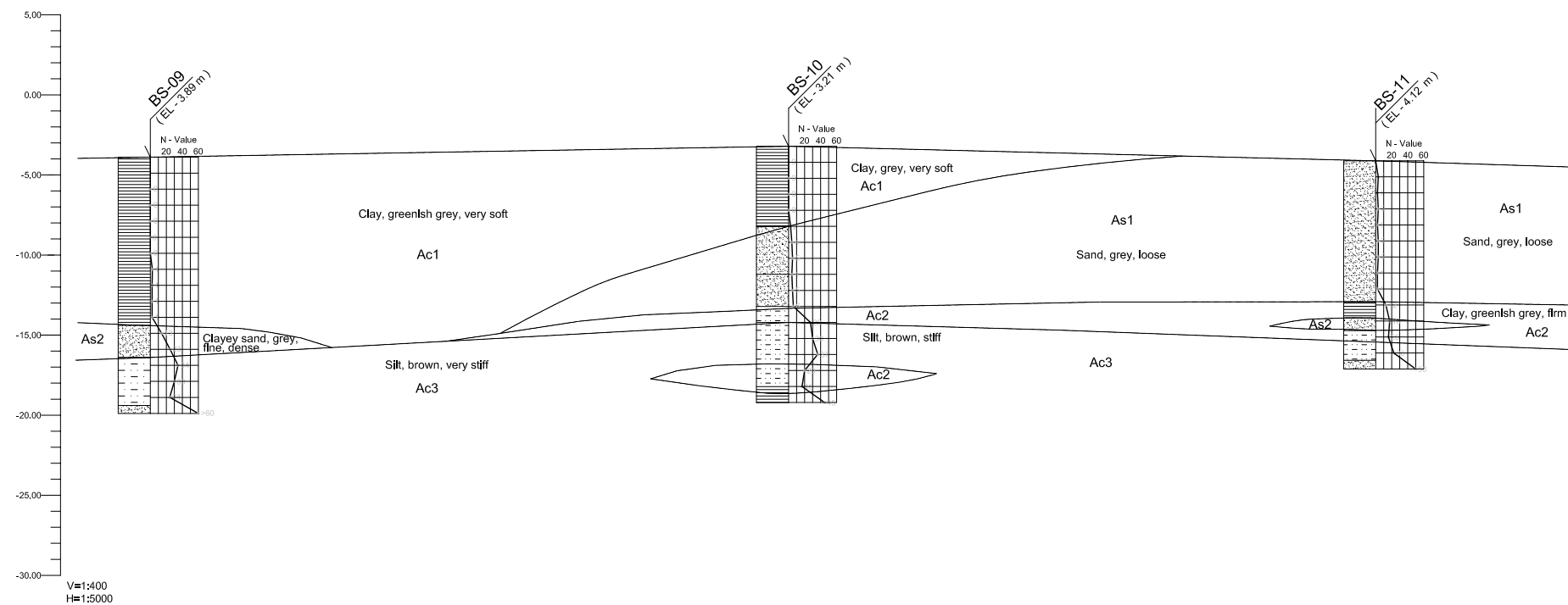
**SECTION A-A'**

Elevation (m)



**SECTION B-B'**

Elevation (m)



**Stratum Classification**

Layer	Soil	N-Value
Fs	Reclaimed / Fill Sand	
Ac1	Clay / Silt	N Value < 8
Ac2	Clay / Silt	8 ≤ N Value < 30
Ac3	Clay / Silt	N Value ≥ 30
As1	Sand	N Value < 10
As2	Sand	10 ≤ N Value < 30
As3	Sand	N Value ≥ 30

**LEGEND :**

CLAY	SILT	SAND	GRAVEL
CLAYEY	SILTY	SANDY	GRAVELLY

**NOTE :**

Elevation in meter M.S.L.  
Refer to Drawing No. P-G-003

REV. NO.	DATE	COORDINATE	BY	APPROVED	DATE

**JICA**  
JAPAN INTERNATIONAL  
COOPERATION AGENCY (JICA)  
**DIRECTORATE GENERAL OF  
SEA COMMUNICATION (DGSC)**

THE DETAILED DESIGN  
ON THE URGENT REHABILITATION PROJECT  
OF THE TANJUNG PRIOK PORT  
IN THE REPUBLIC OF INDONESIA  
**NIPPON KOEI CO., LTD.**  
**JAPAN PORT CONSULTANTS, LTD.**

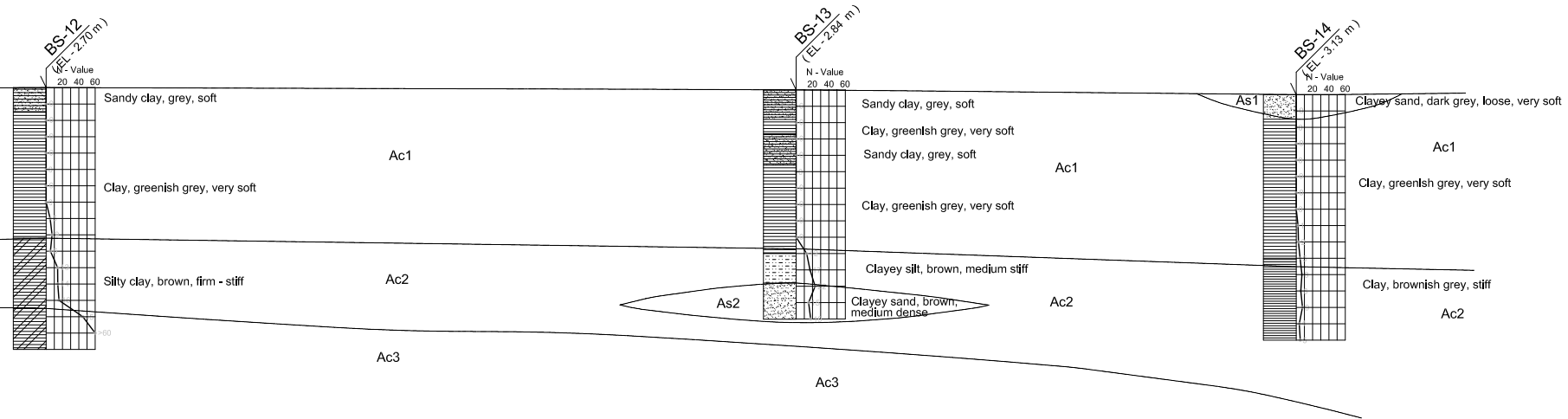
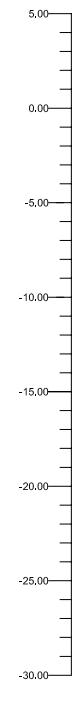
PREPARED BY : *[Signature]*  
Y. PRASETYANTO  
CHECKED BY : *[Signature]*  
M. IMAMURA  
APPROVED BY : *[Signature]*  
K. OKUBO

SECTION : CHANNEL AND BASIN IMPROVEMENT  
SUB-SECTION : GENRAL  
TITLE : Geological Profile (1)

DATE : MARCH 2006  
SCALE : AS SHOWN  
DRAWING NO. : P-G-004

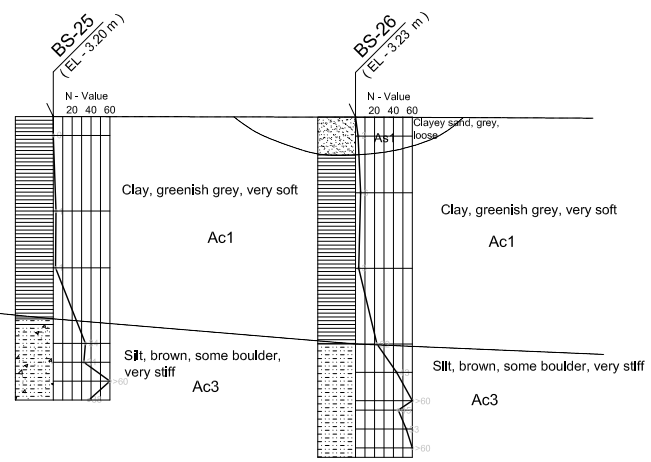
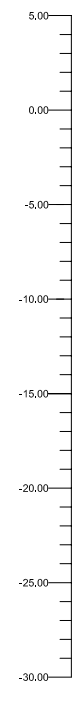
**SECTION C-C'**

Elevation (m)



**SECTION D-D'**

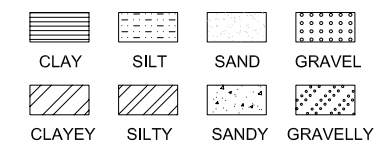
Elevation (m)



**Stratum Classification**

Layer	Soil	N-Value
Fs	Reclaimed / Fill Sand	
Ac1	Clay / Silt	N Value < 8
Ac2	Clay / Silt	8 ≤ N Value < 30
Ac3	Clay / Silt	N Value ≥ 30
As1	Sand	N Value < 10
As2	Sand	10 ≤ N Value < 30
As3	Sand	N Value ≥ 30

**LEGEND :**



**NOTE :**

Elevation in meter M.S.L.  
Refer to Drawing No. P-G-003

REV. NO.	DATE	COORDINATE	BY	APPROVED	DATE

**JICA**  
JAPAN INTERNATIONAL COOPERATION AGENCY (JICA)  
**DIRECTORATE GENERAL OF SEA COMMUNICATION (DGSC)**

THE DETAILED DESIGN  
ON THE URGENT REHABILITATION PROJECT  
OF THE TANJUNG PRIK PORT  
IN THE REPUBLIC OF INDONESIA  
**NIPPON KOEI CO., LTD.**  
**JAPAN PORT CONSULTANTS, LTD.**

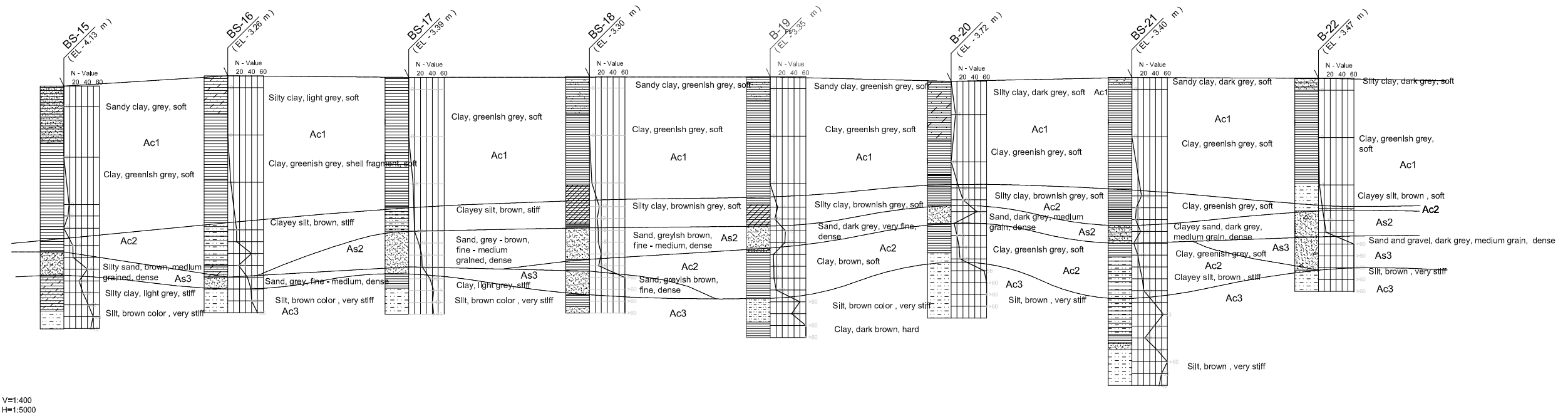
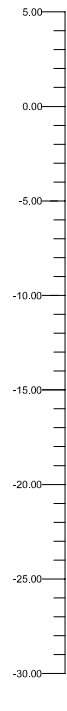
PREPARED BY: *[Signature]*  
Y. PRASETIYANTO  
CHECKED BY: *[Signature]*  
M. IMAMURA  
APPROVED BY: *[Signature]*  
K. OKUBO

SECTION : CHANNEL AND BASIN IMPROVEMENT  
SUB-SECTION : GENERAL  
TITLE : Geological Profile (2)

DATE : MARCH 2006  
SCALE : V:H=400:5000  
DRAWING NO. : P-G-005

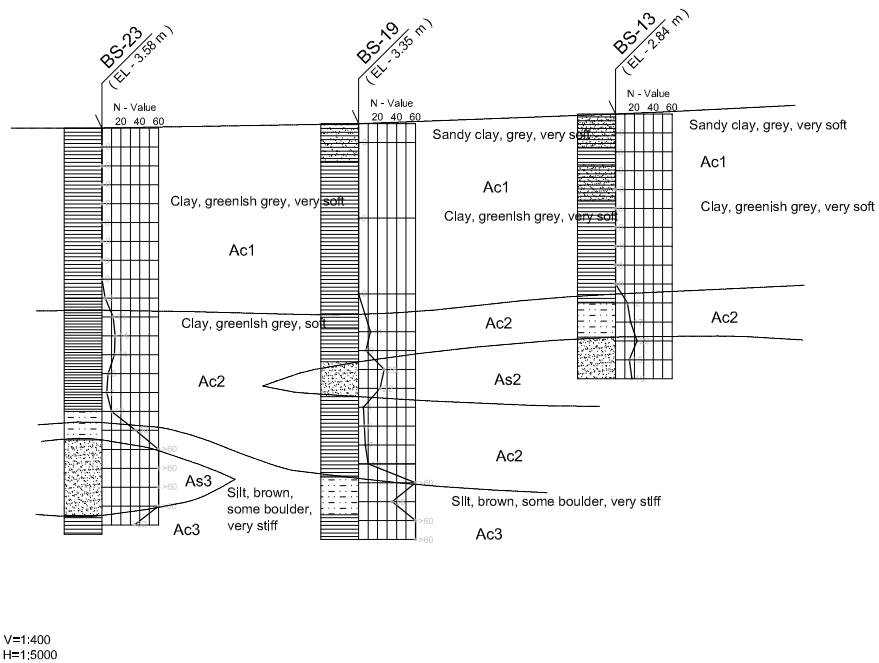
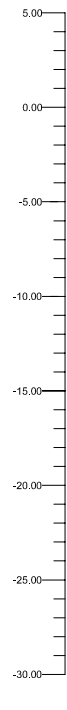
**SECTION E-E'**

Elevation (m)



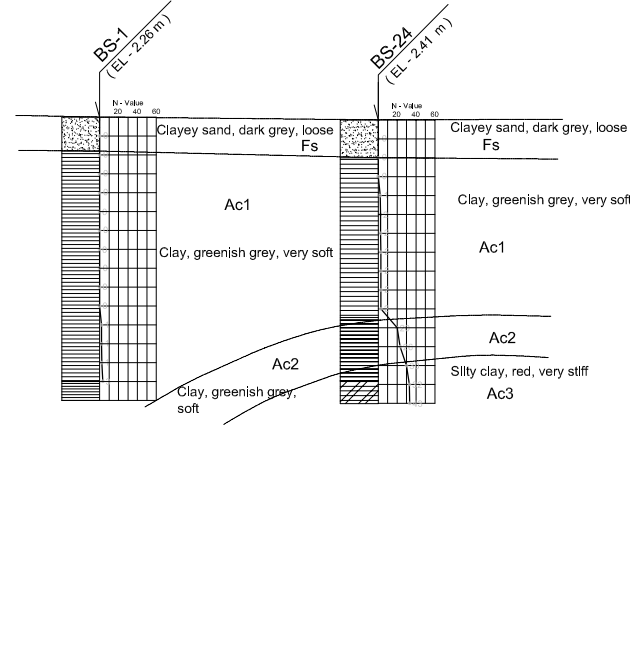
**SECTION F-F'**

Elevation (m)



**SECTION G-G'**

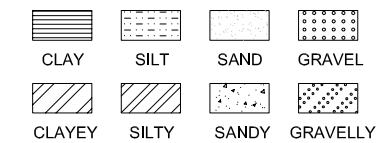
Elevation (m)



**Stratum Classification**

Layer	Soil	N-Value
Fs	Reclaimed / Fill Sand	
Ac1	Clay / Silt	N Value < 8
Ac2	Clay / Silt	8 ≤ N Value < 30
Ac3	Clay / Silt	N Value ≥ 30
As1	Sand	N Value < 10
As2	Sand	10 ≤ N Value < 30
As3	Sand	N Value ≥ 30

**LEGEND :**



**NOTE :**

Elevation in meter M.S.L.  
Refer to Drawing No. P-G-003

REV. NO.	DATE	COORDINATE	BY	APPROVED	DATE

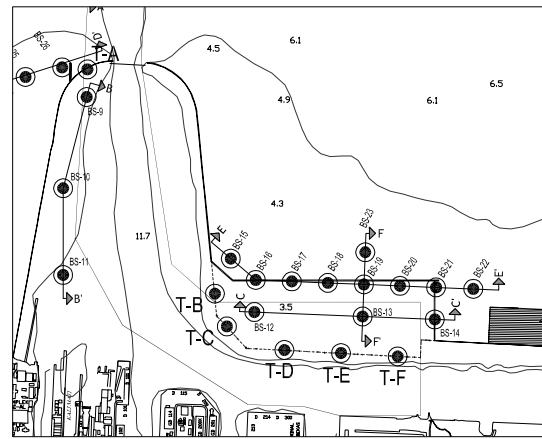
**JICA**  
JAPAN INTERNATIONAL COOPERATION AGENCY (JICA)  
**DIRECTORATE GENERAL OF SEA COMMUNICATION (DGSC)**

THE DETAILED DESIGN  
ON THE URGENT REHABILITATION PROJECT  
OF THE TANJUNG PRIOK PORT  
IN THE REPUBLIC OF INDONESIA  
**NIPPON KOEI CO., LTD.**  
**JAPAN PORT CONSULTANTS, LTD.**

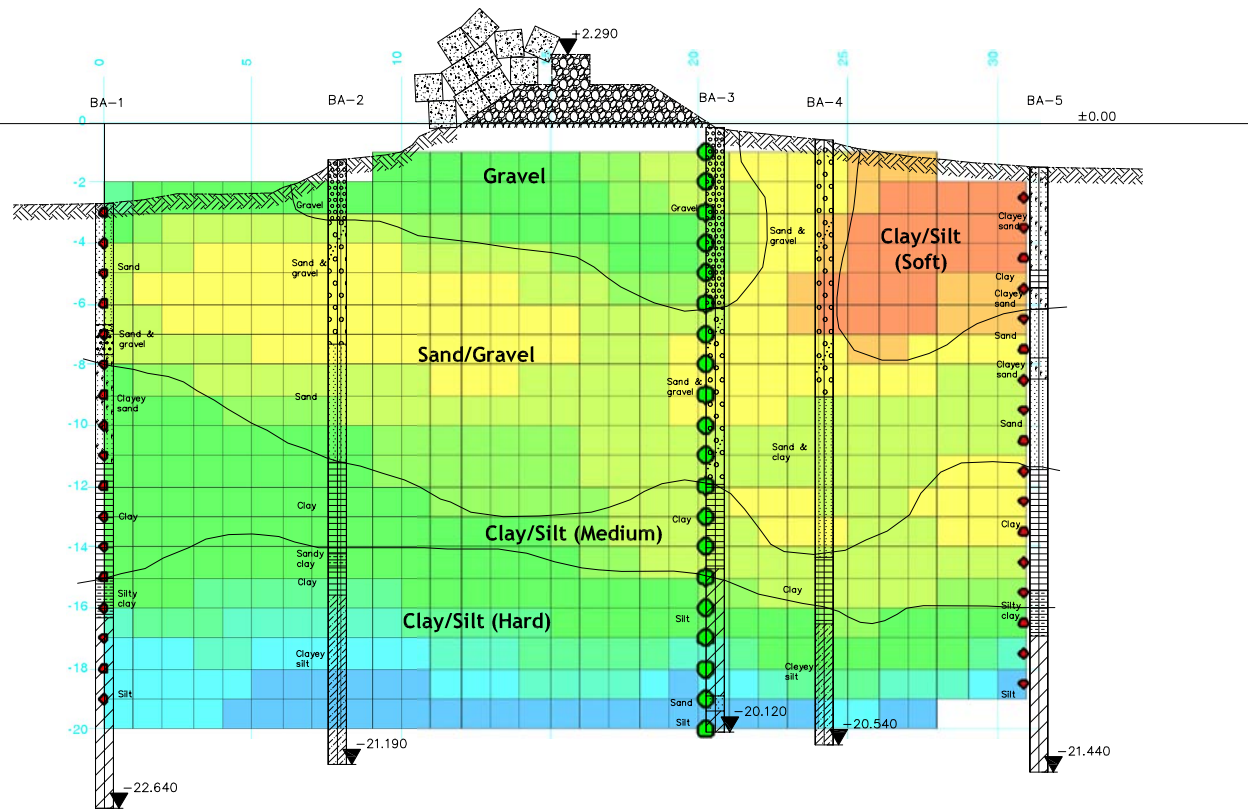
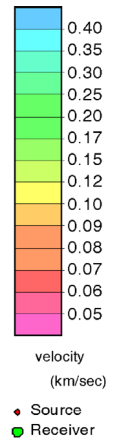
PREPARED BY : *[Signature]*  
Y. PRASETIYANTO  
CHECKED BY : *[Signature]*  
M. IMAMURA  
APPROVED BY : *[Signature]*  
K. OKUBO

SECTION : CHANNEL AND BASIN IMPROVEMENT  
SUB-SECTION : GENERAL  
TITLE : **Geological Profile (3)**

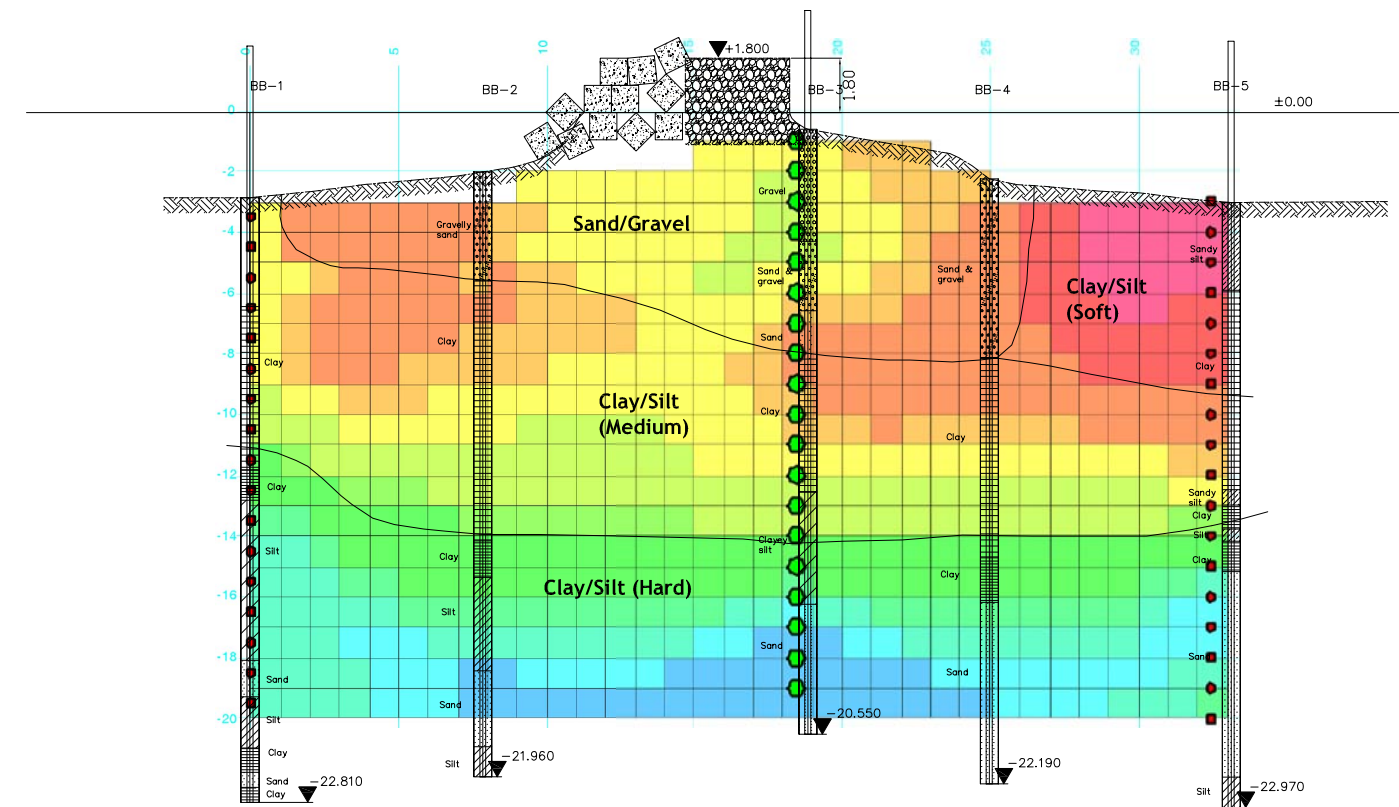
DATE : MARCH 2006  
SCALE : V:H=400:5000  
DRAWING NO. : P-G-006



**KEY PLAN**



**Section at T-A**



**Section at T-B**

**"SEISMIC TOMOGRAPHY"**

**NOTE :**  
Elevation in meter M.S.L.

REV. NO.	DATE	COORDINATE	BY	APPROVED	DATE

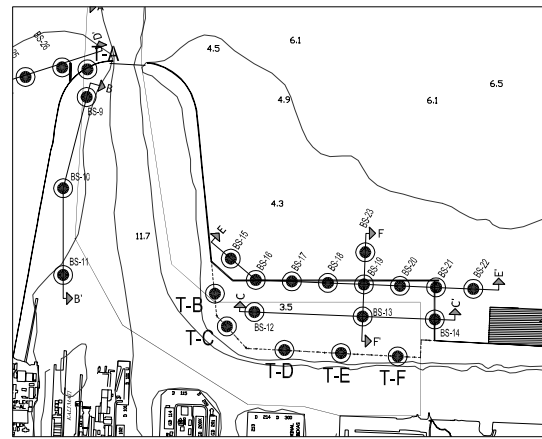
**JICA**  
JAPAN INTERNATIONAL COOPERATION AGENCY (JICA)  
**DIRECTORATE GENERAL OF SEA COMMUNICATION (DGSC)**

THE DETAILED DESIGN  
ON THE URGENT REHABILITATION PROJECT  
OF THE TANJUNG PRIK PORT  
IN THE REPUBLIC OF INDONESIA  
**NIPPON KOEI CO., LTD.**  
**JAPAN PORT CONSULTANTS, LTD.**

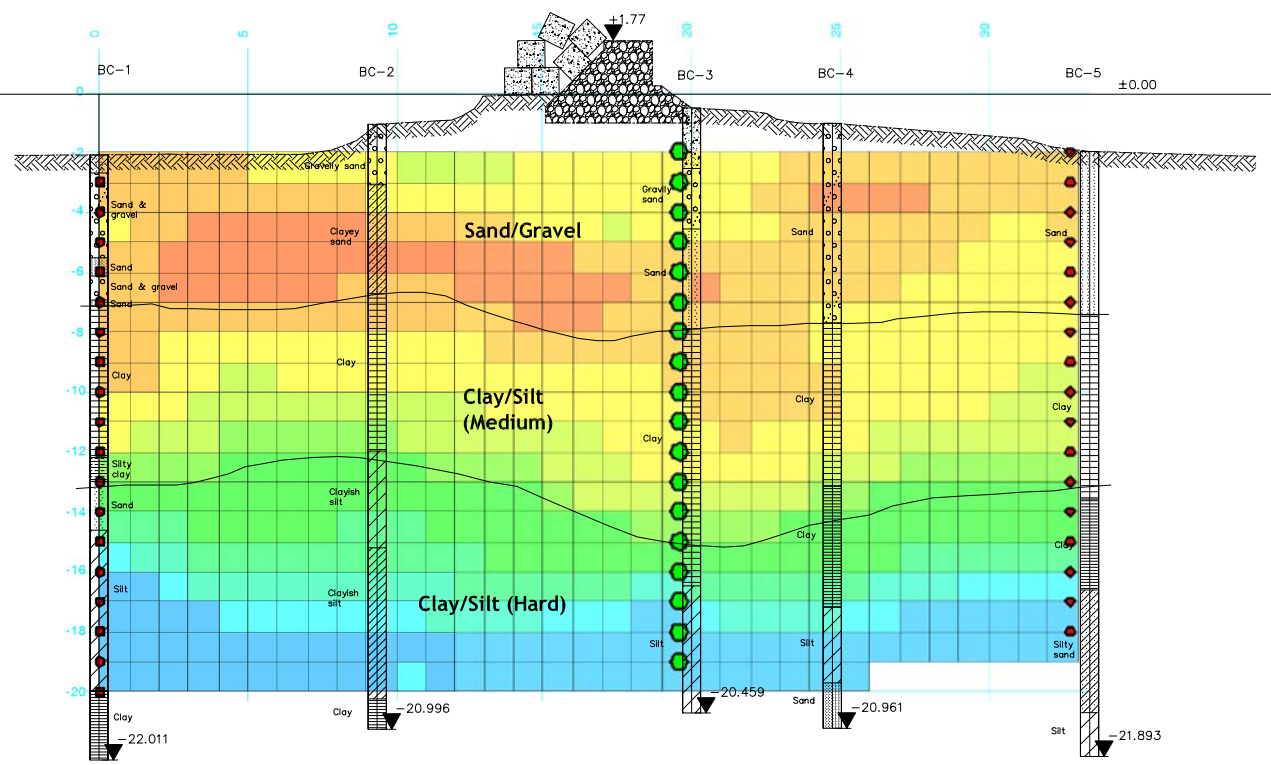
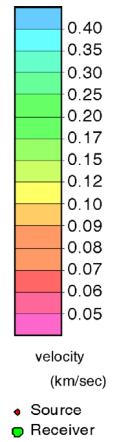
PREPARED BY :  
*A. E. Sulistiadi*  
A. E. SULISTIADI  
CHECKED BY :  
*M. Shiguro*  
M. SHIGURO  
APPROVED BY :  
*K. Okubo*  
K. OKUBO

SECTION : CHANNEL AND BASIN IMPROVEMENT  
SUB-SECTION : GENERAL  
TITLE : **Geological Profile (4)**

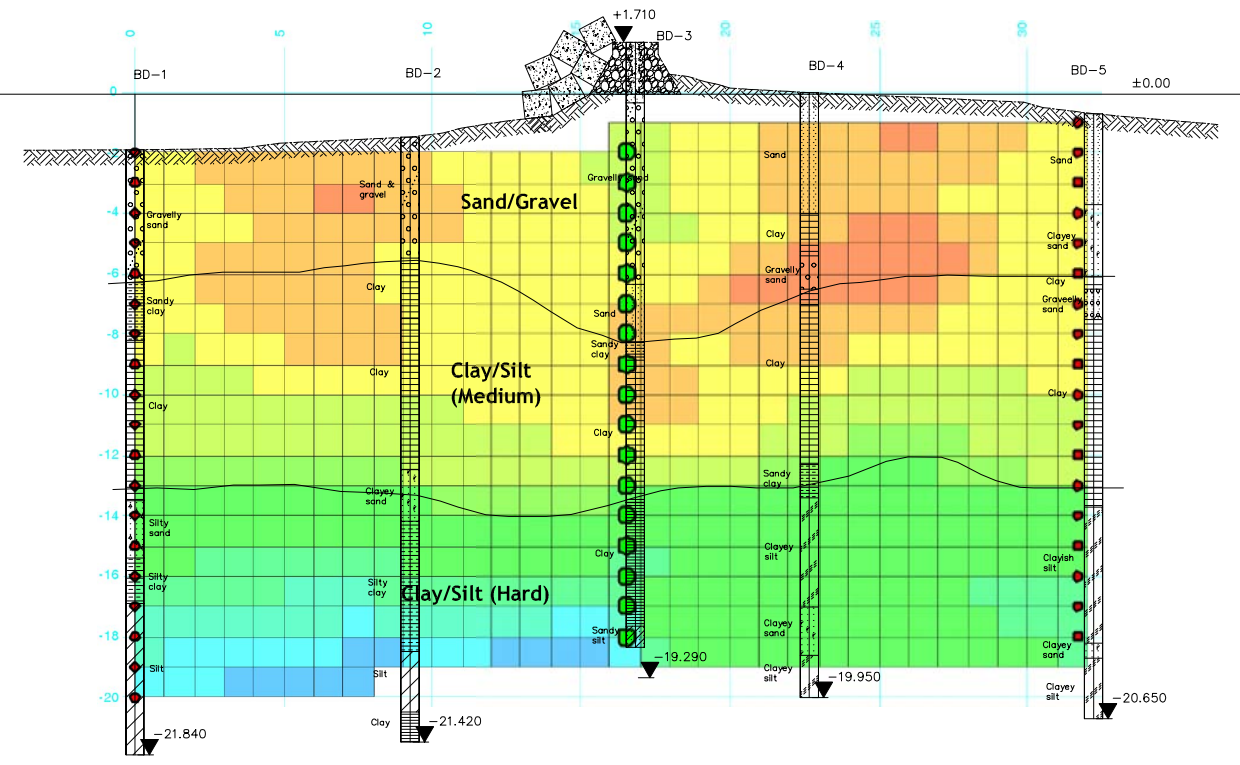
DATE : **MARCH 2006**  
SCALE : **1:250**  
DRAWING NO. : **P-G-007**



KEY PLAN



Section at T-C



Section at T-D

"SEISMIC TOMOGRAPHY"

NOTE :  
Elevation in meter M.S.L.

REV. NO.		DATE	COORDINATE	BY	APPROVED	DATE	<p>JAPAN INTERNATIONAL COOPERATION AGENCY (JICA)</p> <p>DIRECTORATE GENERAL OF SEA COMMUNICATION (DGSC)</p>	<p>THE DETAILED DESIGN ON THE URGENT REHABILITATION PROJECT OF THE TANJUNG PRIOK PORT IN THE REPUBLIC OF INDONESIA</p> <p>NIPPON KOEI CO., LTD.</p> <p>JAPAN PORT CONSULTANTS, LTD.</p>	PREPARED BY : <i>A. E. Sulistiadi</i> A. E. SULISTIADI	SECTION : CHANNEL AND BASIN IMPROVEMENT SUB-SECTION : GENERAL	DATE : <b>MARCH 2006</b>
									CHECKED BY : <i>M. Shiguro</i> M. SHIGURO	TITLE : <b>Geological Profile (5)</b>	SCALE : <b>1:250</b>
								APPROVED BY :  K. OKUBO		DRAWING NO. : <b>P-G-008</b>	