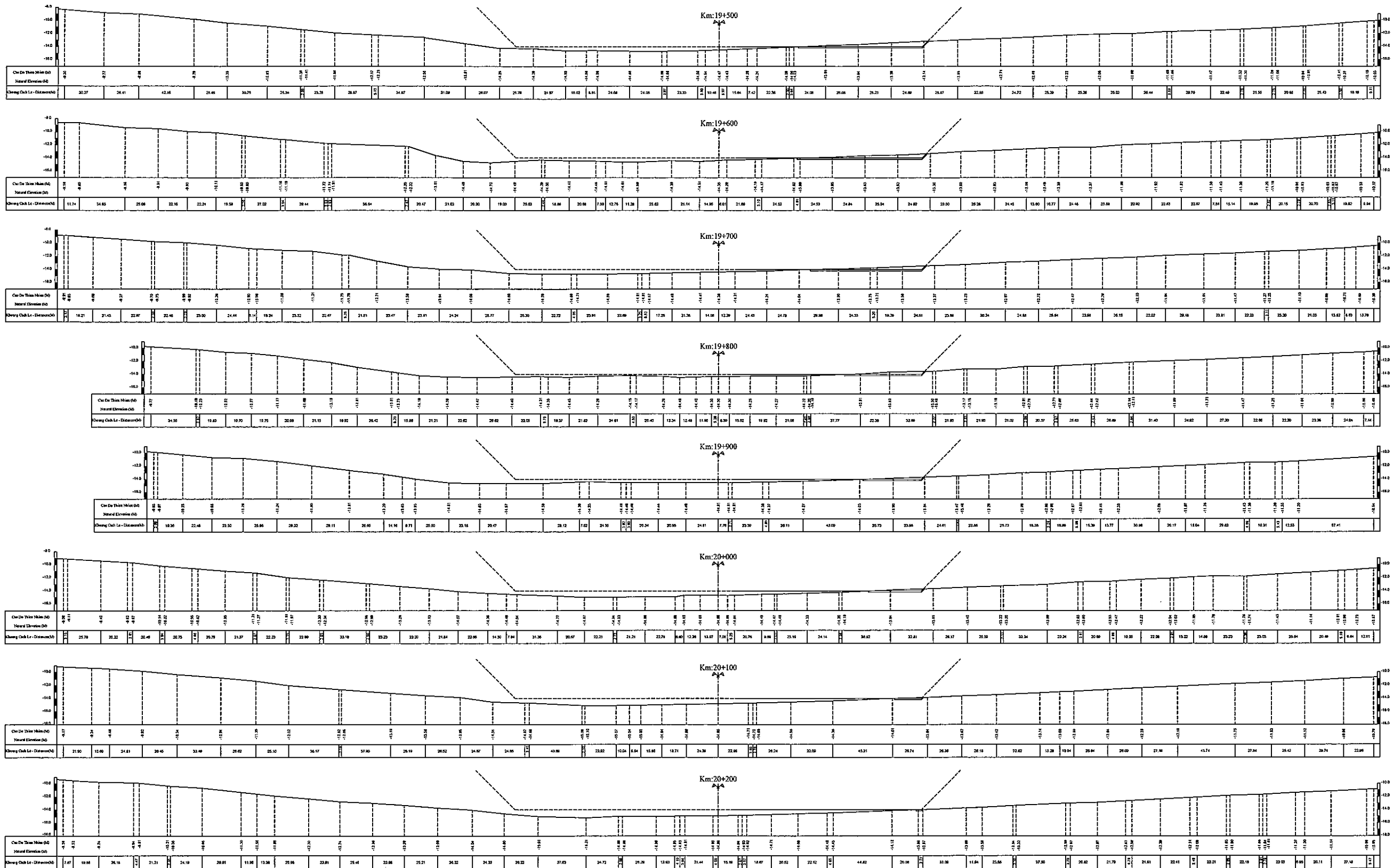


CROSS SECTION OF CHANNEL

VERTICAL SCALE 1/1000
HORIZONTAL SCALE 1/10000



NOTES
- COORDINATE SYSTEM HNTZ
- CHART DATUM
(CHART DATUM = HON DAU DATUM + 2.887M)
- ALL ELEVATIONS ARE IN (M)

REV NO	DATE	DESCRIPTION	BY	APP

THE SOCIALIST REPUBLIC OF VIETNAM
MINISTRY OF TRANSPORT
PROJECT MANAGEMENT UNIT 85

JAPAN INTERNATIONAL COOPERATION AGENCY
ASSIGNED TO:
JAPAN PORT CONSULTANT (JPC)
PACIFIC CONSULTANTS INTERNATIONAL (PCI)
INTERNATIONAL DEVELOPMENT SYSTEM (IDS)

CAI MEP - THI VAI INTERNATIONAL PORT
CONSTRUCTION PROJECT

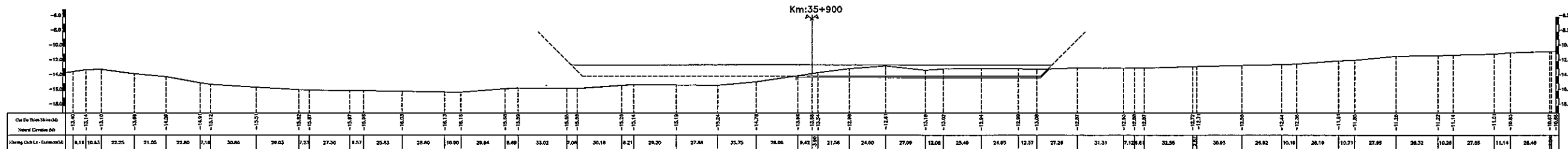
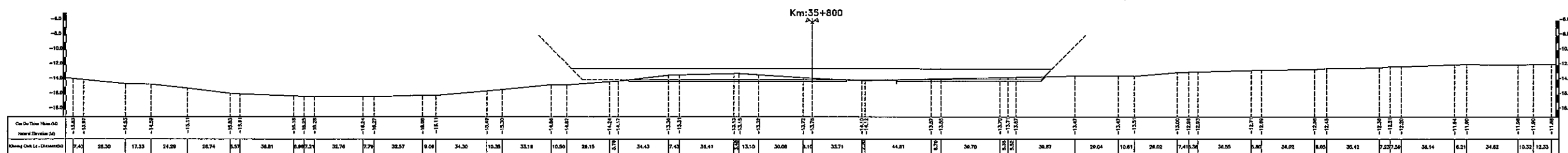
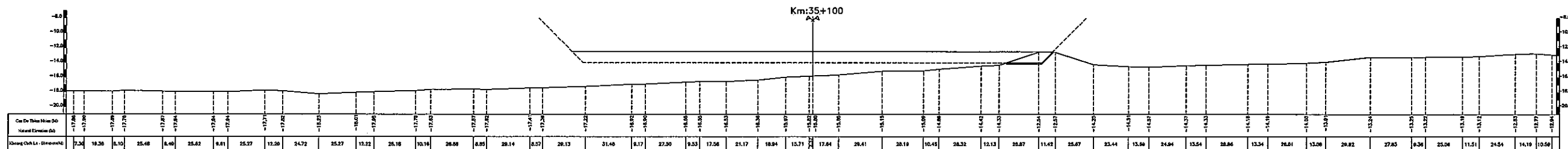
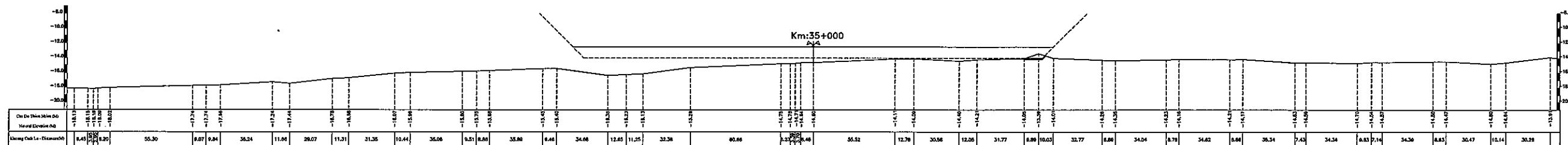
PACKAGE 3
NAVIGATION CHANNEL DREDGING

DESIGNED BY: SASAKI E
DRAWN BY: NGUYEN VIET DUNG
CHECKED BY: NAGAI K
APPROVED BY: NAGAI K
ISSUE DATE: 30/SEP/2005
SCALE: SCALE

SECTION: NAVIGATION CHANNEL DREDGING
SUB-SECTION: CHANNEL DREDGING CROSS SECTION
TITLE OF DRAWING: CROSS SECTION(21) -KM 19+500 -20+200
DWG NO: PAC3-NC-CDC-021
REV. NO:

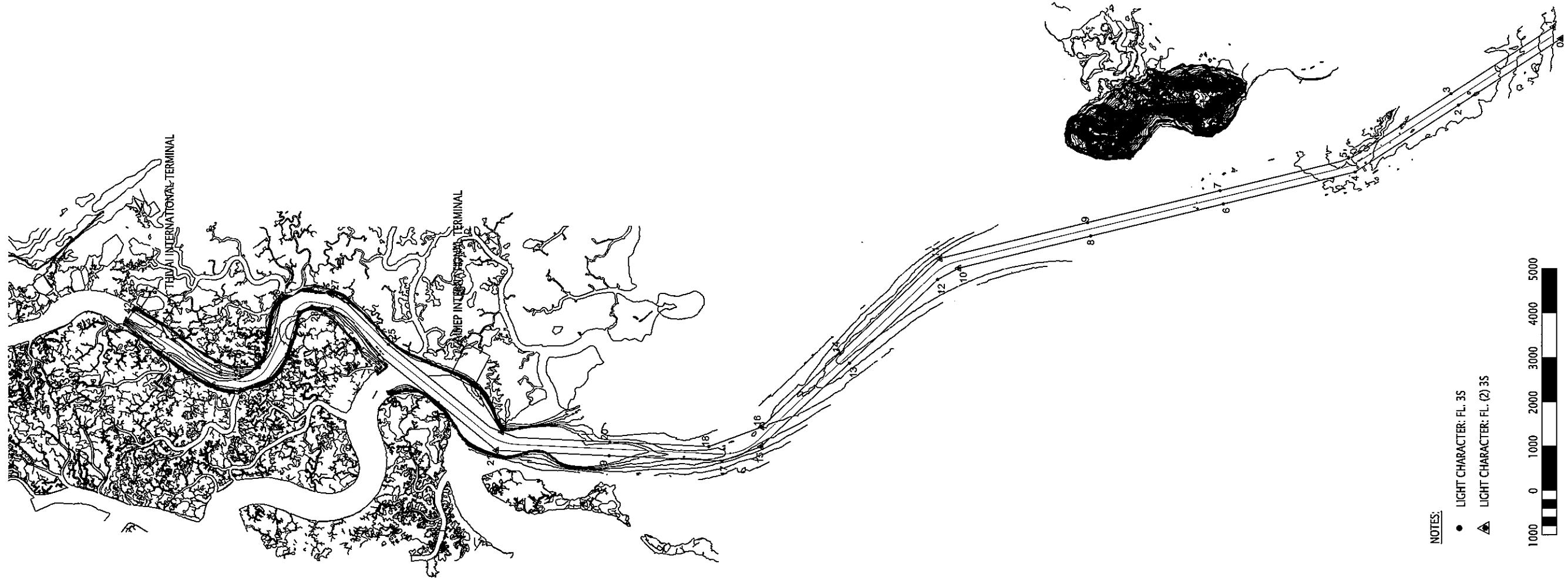
CROSS SECTION OF CHANNEL

VERTICAL SCALE 1/200
HORIZONTAL SCALE 1/1.000

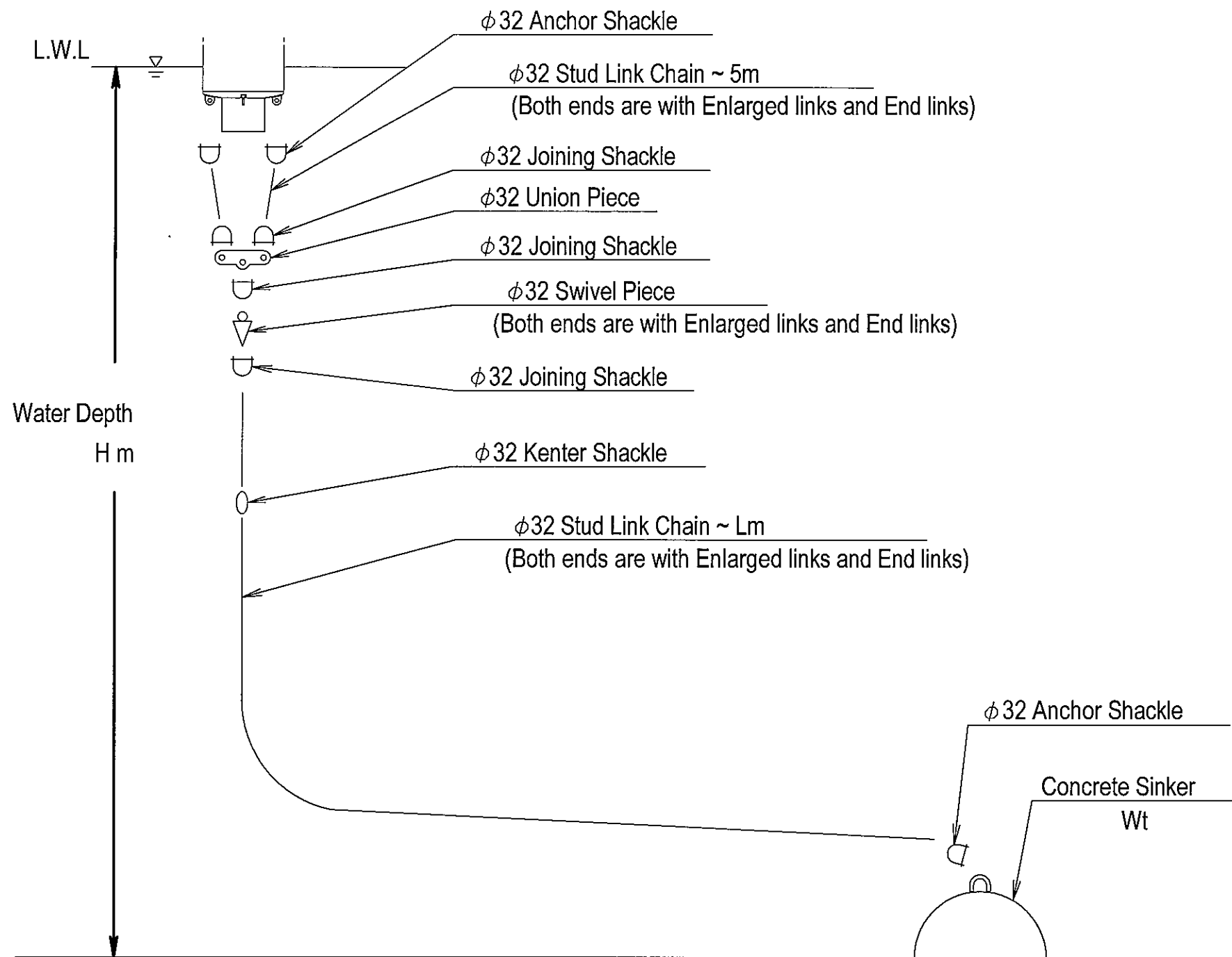


BUOY ARRANGEMENT

No	NAME	COORDINATES(HN72)	
		EAST (M)	NORTH (M)
1	PM-0	618253.693	1137760.042
2	PM-1	618513.907	1137928.532
3	PM-2	616754.241	1140075.774
4	PM-3	617014.455	1140244.265
5	PM-4	615254.788	1142391.507
6	PM-5	615566.160	1142539.116
7	PM-6	614535.689	1145366.270
8	PM-7	614836.980	1145439.102
9	PM-8	613816.590	1148341.033
10	PM-9	614117.882	1148413.865
11	PM-10	613097.491	1151315.796
12	PM-11	613313.874	1151740.008
13	PM-12	612840.202	1151789.125
14	PM-13	610960.332	1153772.513
15	PM-14	611185.328	1153985.766
16	PM-15	609080.463	1155755.900
17	PM-16	609524.178	1155738.390
18	PM-17	608751.086	1156645.030
19	PM-18	609076.305	1156947.391
20	PM-19	608875.833	1159185.809
21	PM-20	609185.460	1159170.607
22	PM-21	609000.580	1161726.589
23	PM-22	609417.855	1161605.805
24	PM-23	610076.666	1163050.660
25	PM-24	611152.751	1164374.770
26	PM-25	611384.049	1164167.846
27	PM-26	612188.214	1165446.113
28	PM-27	612510.053	1165441.182
29	PM-28	612248.546	1165888.878
30	PM-29	612115.775	1166190.168
31	PM-30	612343.084	1166580.681
32	PM-31	611163.626	1166457.266
33	PM-32	611350.491	1166811.061
34	PM-33	610603.913	1166877.648
35	PM-34	610862.159	1167069.742
36	PM-35	610380.007	1167500.000
37	PM-36	610680.486	1167500.000
38	PM-37	610481.126	1168121.684
39	PM-38	610749.361	1167964.354
40	PM-39	611424.934	1169518.530
41	PM-40	611551.467	1169152.084
42	PM-41	611832.747	1170122.096
43	PM-42	612130.643	1169919.961



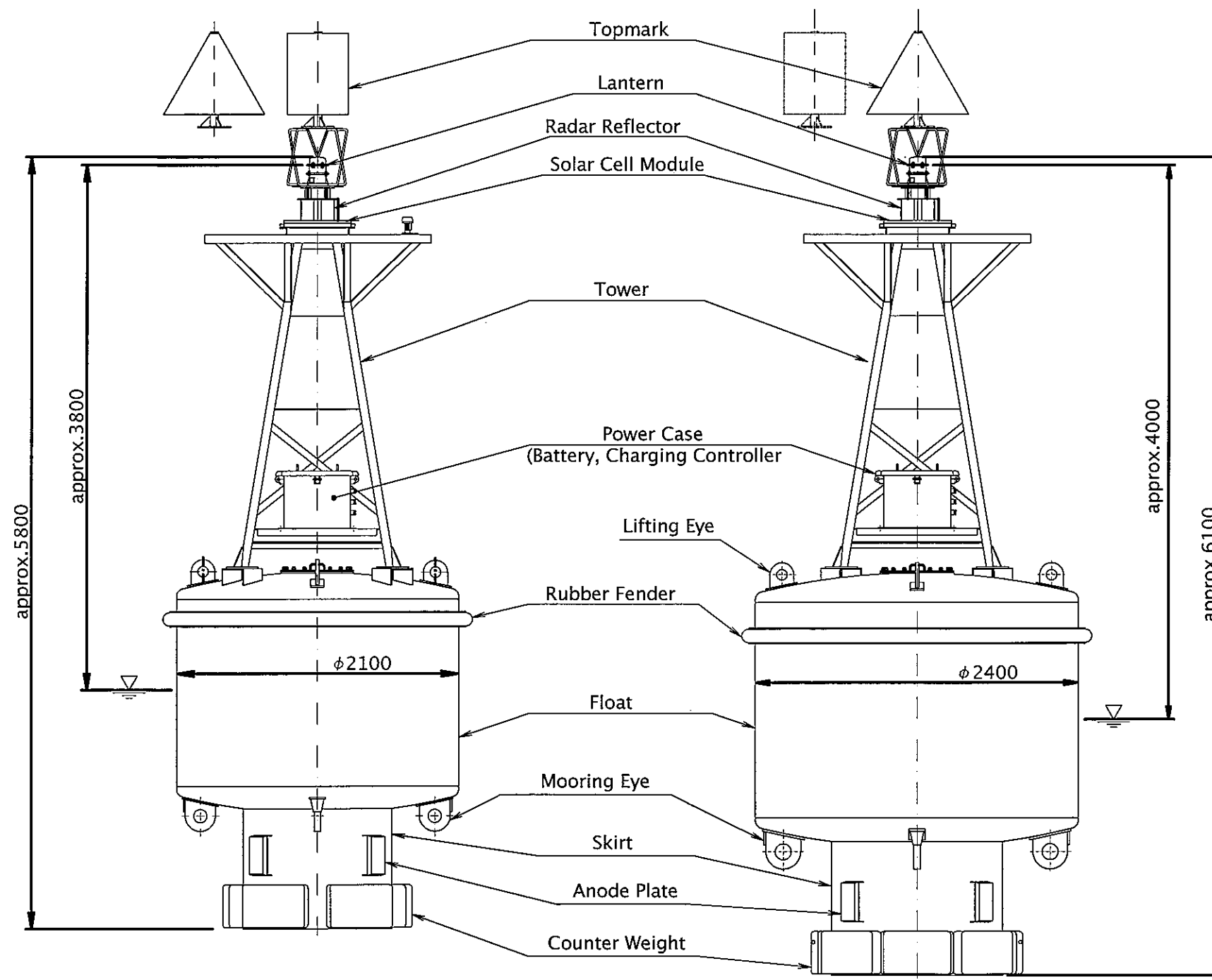
<p>THE SOCIALIST REPUBLIC OF VIETNAM MINISTRY OF TRANSPORT PROJECT MANAGEMENT UNIT 85</p>					<p>CAI MEP - THI VAI INTERNATIONAL PORT CONSTRUCTION PROJECT</p>		<p>DESIGNED BY: SASAKI E DRAWN BY: NGUYEN VIET DUNG CHECKED BY: NAGAO N. APPROVED BY: NAGAI K. ISSUE DATE: 30/SEP/2005 SCALE: SCALE</p>		<p>SECTION: NAVIGATION CHANNEL DREDGING SUB-SECTION: NAVIGATION AIDS TITLE OF DRAWING: GENERAL LAYOUT OF NAVIGATION AIDS DWG NO: PAC3-NC-NVA-001</p>	
REV NO	DATE	DESCRIPTION	BY	APP	<p>JICA JAPAN INTERNATIONAL COOPERATION AGENCY ASSIGNED TO: JAPAN PORT CONSULTANT (JPC) PACIFIC CONSULTANTS INTERNATIONAL (PCI) INTERNATIONAL DEVELOPMENT SYSTEM (IDS)</p>		<p>PACKAGE 3 NAVIGATION CHANNEL DREDGING</p>		<p>REV. NO</p>	



- Note : 1. Chains are made in accordance with JIS (Japanese Industrial Standards) Grade 2 or equivalent.
 The chain is usually coated with bitumen solution.
2. End links , shall be so processed as to clear body of anchor shackle of the same nominal diameter.
3. All the shackle pin shall be fixed by a bent stainless steel pin and welded with the shackle body.

Water Depth (H)	5 ~ 7	7 ~ 11	11 ~ 15	15 ~ 18
Length of Chain (L)	10	15	20	25

THE SOCIALIST REPUBLIC OF VIETNAM MINISTRY OF TRANSPORT PROJECT MANAGEMENT UNIT 85					CAI MEP - THI VAI INTERNATIONAL PORT CONSTRUCTION PROJECT		DESIGNED BY: SASAKI E DRAWN BY: NGUYEN VIET DUNG CHECKED BY: NAGAO N. APPROVED BY: NAGAI K. ISSUE DATE: 30/SEP/2005 SCALE: SCALE		SECTION: NAVIGATION CHANNEL DREDGING SUB-SECTION: NAVIGATION AIDS TITLE OF DRAWING: DETAILS OF MOORING CHAIN ASSEMBLY DWG NO: PAC3-NC-NVA-002 REV. NO	
JAPAN INTERNATIONAL COOPERATION AGENCY ASSIGNED TO: JAPAN PORT CONSULTANT (JPC) PACIFIC CONSULTANTS INTERNATIONAL (PCI) INTERNATIONAL DEVELOPMENT SYSTEM (IDS)					PACKAGE 3 NAVIGATION CHANNEL DREDGING					
REV NO	DATE	DESCRIPTION	BY	APP						



Main Material: Steel

<p>THE SOCIALIST REPUBLIC OF VIETNAM MINISTRY OF TRANSPORT PROJECT MANAGEMENT UNIT 85</p>					<p>CAI MEP - THI VAI INTERNATIONAL PORT CONSTRUCTION PROJECT</p>			<p>DESIGNED BY: SASAKI E DRAWN BY: NGUYEN VIET DUNG CHECKED BY: NAGAO N. APPROVED BY: NAGAI K. ISSUE DATE: 30/SEP/2005 SCALE: SCALE</p>		<p>SECTION: NAVIGATION CHANNEL DREDGING SUB-SECTION: NAVIGATION AIDS TITLE OF DRAWING: DETAILS OF LIGHTED BUOY DWG NO: PAC3-NC-NVA-003</p>	
<p>JAPAN INTERNATIONAL COOPERATION AGENCY ASSIGNED TO: JAPAN PORT CONSULTANT (JPC) PACIFIC CONSULTANTS INTERNATIONAL (PCI) INTERNATIONAL DEVELOPMENT SYSTEM (IDS)</p>					<p>PACKAGE 3 NAVIGATION CHANNEL DREDGING</p>			<p>REV. NO</p>			
REV NO	DATE	DESCRIPTION	BY	APP							