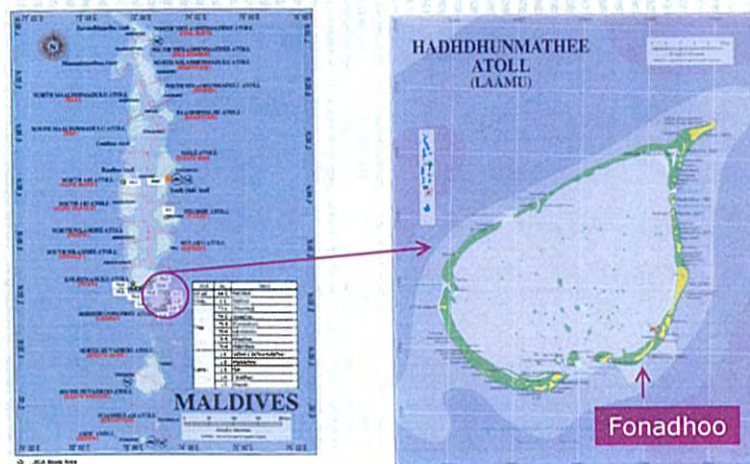


# Background of the Demonstration Project

The Community Based Living Environment Recovery and Disaster Risk Management Project In Laam Fonadhoo

## Location of Laam Fonadhoo



## Laamu Fonadhoo (Aero-photo)



- ©1,740 persons / 264 households
- ©Capital Island of Laamu Atoll
- ©Atoll Office, Education Centre, Police Station

## On 26 December 2004, Tsunami struck Fonadhoo





## Heavy Damages on the Island



- ©4dead
- ©totally damaged houses:49
- ©partially damaged houses:186
- ©power supply, etc.

## Piles of Debris



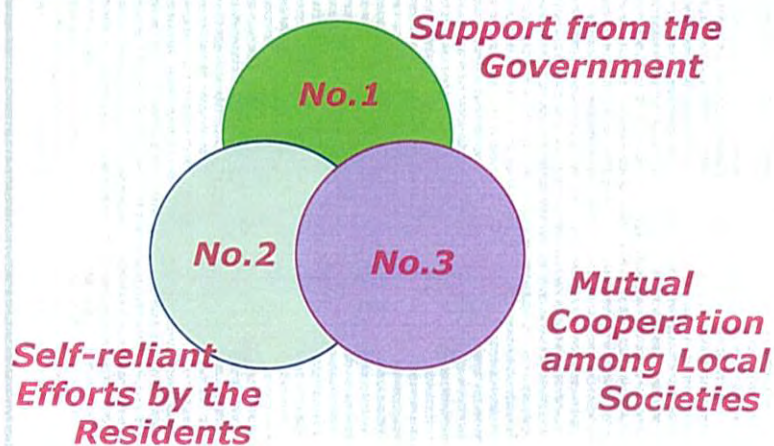
---

## ***"To Build More Disaster-proof Living Environment"***

### **3 Important Backup**

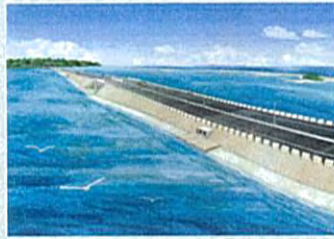
(lessons learned of Japan)

---





## Support from the Government



## Self-reliant Efforts by the Residents (Restore Houses by the Residents)



Community Based Demonstration Project

**As Mutual Cooperation  
Among Local Society**

**An Assistant Program by JICA**







## No.1

- Can we re-use debris as recycled construction materials, instead of dispose as debris?

---

## No.2

- Can we build a safety place for evacuation against the future tsunami?

---

## No.3

- Can we make a record and memory of the tsunami to the next generations?
- Can we build a moment for that purpose?



---

## No.4

- Can we prepare a learning program on disaster prevention, especially for the school children?

## 4 Ideas of the Project

---

- No.1** Debris Clearance and Recycling
- No.2** Build Safety Evacuation Place
- No.3** Build A Monument of Tsunami
- No.4** Prepare disaster prevention education program

---

The Community Based Living  
Environment Recovery and Disaster Risk  
Management Project

---

Demonstration Project In Laam Fonadhoo



# **Community Based Recovery Project**

## **Demonstration Project in L. Fonadhoo**

**Community Based  
Living Environment Recovery and  
Disaster Risk Management  
Project**

**Mr. Mohamed Nasym from the Community**

### **Project Outline**

## **Project Objectives**

- To recover the **living environment**
- To provide **groundwork** for reconstruction
  - Production of **Construction Material**
  - Provide **Income Generation**
- To enlighten the community in regard to the **disaster prevention**

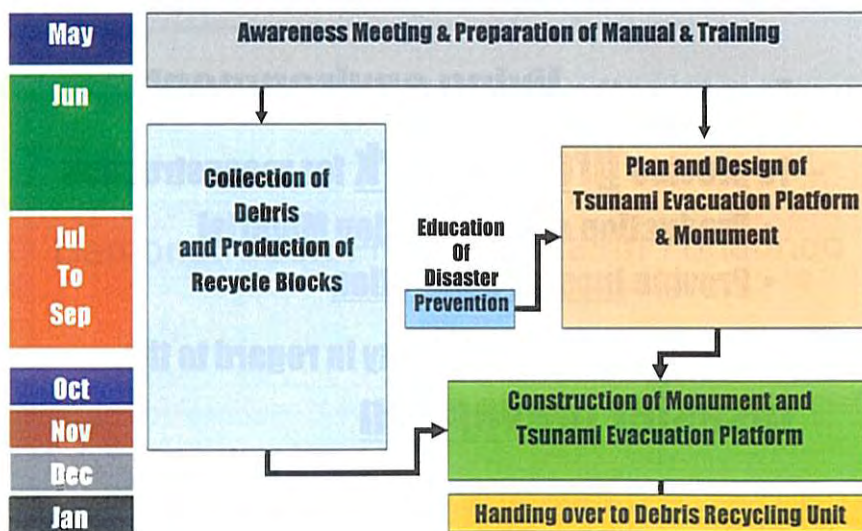
**Project Outline**

## **Project Activities**

- Clearing of **Debris**
- Production of **Recycled Blocks**
- **Education** of Disaster Prevention
- Construction of **Tsunami Monument** and **Evacuation Platform**

**Project Outline**

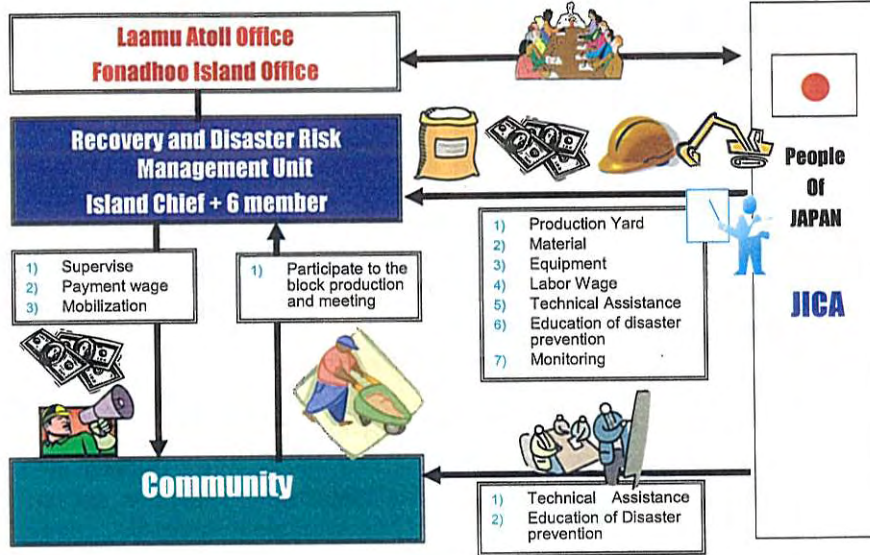
## **Implementation Schedule**





## Project Outline

# Implementing Organization



# Project Progress

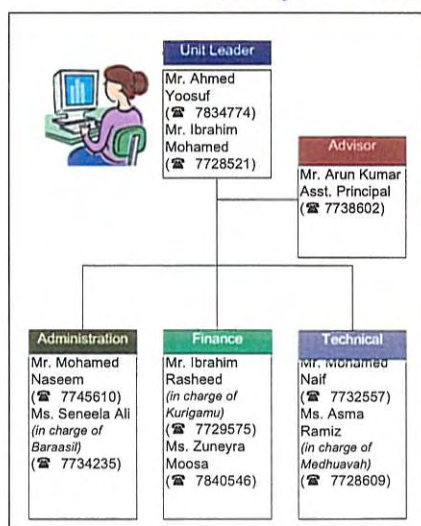
## Project Awareness



- Awareness Meeting was held on 26<sup>th</sup> and 27<sup>th</sup> May 2005.
- Total 184 were participated to the meeting.

## Setting up Implementing Unit

Recovery and Disaster Risk Management Unit



- Members are from the Island Office, Women Development Committee, Island Development Committee and Laamu Atoll Education center.
- The article of the association for regulating operation of the Unit was prepared.



## Plan and Design of Tsunami Monument and Platform



■230 students in Laamu Atoll Education Center draw the pictures with motif of Tsunami. 8 pictures were selected as a picture to tell the tsunami experience to the next generation.

■The resource person in the Fonadhoo (Local NGOs, Businessman, CBOs, Teacher and Government Staff )participated to the plan and design of the tsunami evacuation platform and monument.

## Education on Disaster Prevention



■Have program on disaster prevention to Laamu Atoll Education Center by inviting Japanese NGO CODE and teacher

■Singing "Dhuehuha" Song, Prize giving to tsunami pictures

■Focus on preparedness of natural disaster and how to react in case of tsunami and Introduce the disaster prevention in Japanese school

## Completion of Block Production Yard



■ The block production yard has been completed on 4<sup>th</sup> August, 2005.

## Production of Recycled Blocks



■ Production of recycled blocks has been started on 14<sup>th</sup> August.

■ The blocks are produced by mixing cement, sand and mortar/coral stone recycled from debris.





## **Status of Block Production with Sorting and Processing**

- **Participation from community was 5,559 in man-day**
- **About MRF. 718,100: cash to the community**
- **About 38,374 recycled blocks were produced (in which, 1,200 blocks are going to use for the construction of the evacuation platform)**

• *As of 18<sup>th</sup> January 2006*



## **Construction of Tsunami Monument and Evacuation Platform**

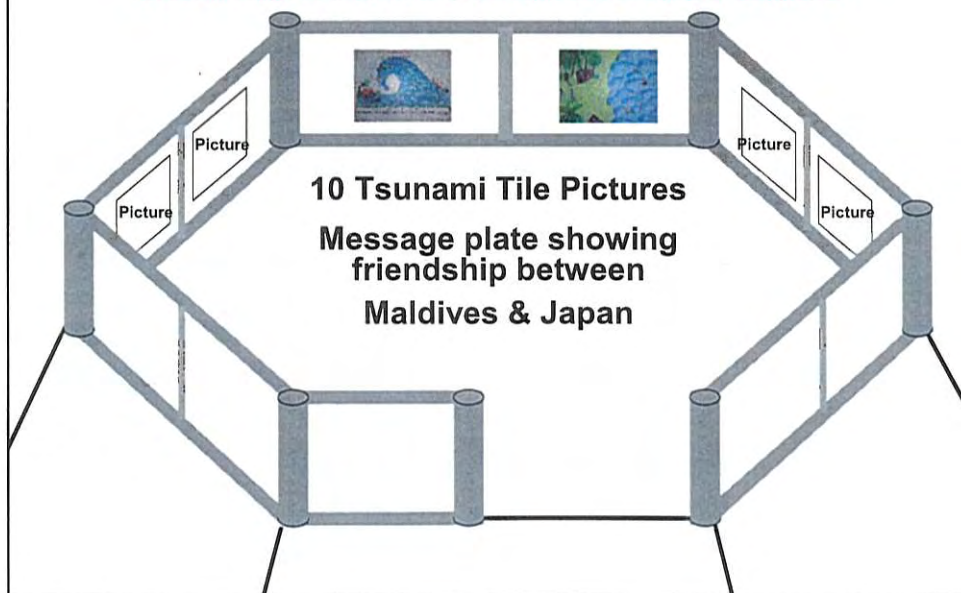




## Image of the Completed Monument and Platform



## Monumental Pictures and Plates



## **Project Monitoring & Management**



- Unit Meeting is held on every Thursdays morning for discussing the progress and issues
- Activities Report is prepared by the Unit and JICA Study Team

**End**

**JICA**

# **Report on the Production of Recycling Blocks and Building Evacuation Platform**

Mr. Ibrahim Rasheed from the Community

## **Piles of Debris**





## Clearing of Debris



## Works by the Community



## Sorting and Processing of Debris



## Production Yard





## **Recycle of Coral Stones**



## **Mixture of Cement and Coral**





## **Recycle Blocks**



## **Construction of Evacuation Platform**



## **Construction of Evacuation Platform**



## **Latest Photo of Evacuation Platform**



# **Report on the Education of Natural Disaster Prevention**

Ms. Seneela Ali from the Community

## **Education on Disaster Prevention**



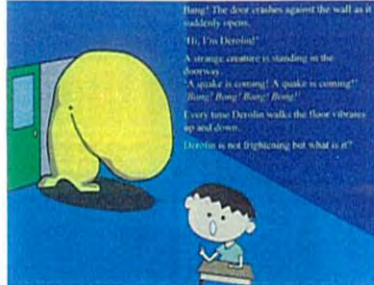


# Disaster Prevention

## Tsunami Preparedness

### Before the TSUNAMI Comes...

- Talk with Family, Friends and Neighbors about Tsunami Safety.
- Know WHERE is the SAFE PLACE.
- Know HOW to get the SAFE PLACE.



### When the TSUNAMI Occurs...



- The Warning Signs of Tsunami
  - Shake of Earthquake,
  - Unusual Change in Sea Level, OR
  - Roaring Noise.
 (These signs may not be seen every time.)

### The Points of TSUNAMI Evacuation

- SHAKE** Do NOT WAIT to be told!
- RUN** To HIGHER PLACE!
- STAY** Do NOT RETURN!
- REMEMBER** More WAVES may COME!



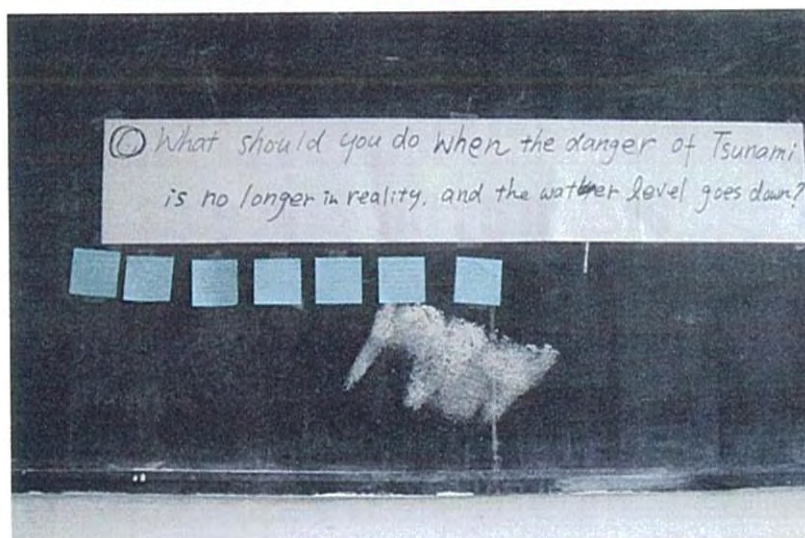
# Meeting of Natural Disaster Prevention



## Meeting of Natural Disaster Prevention



## Education at Fonadhoo Education Centre



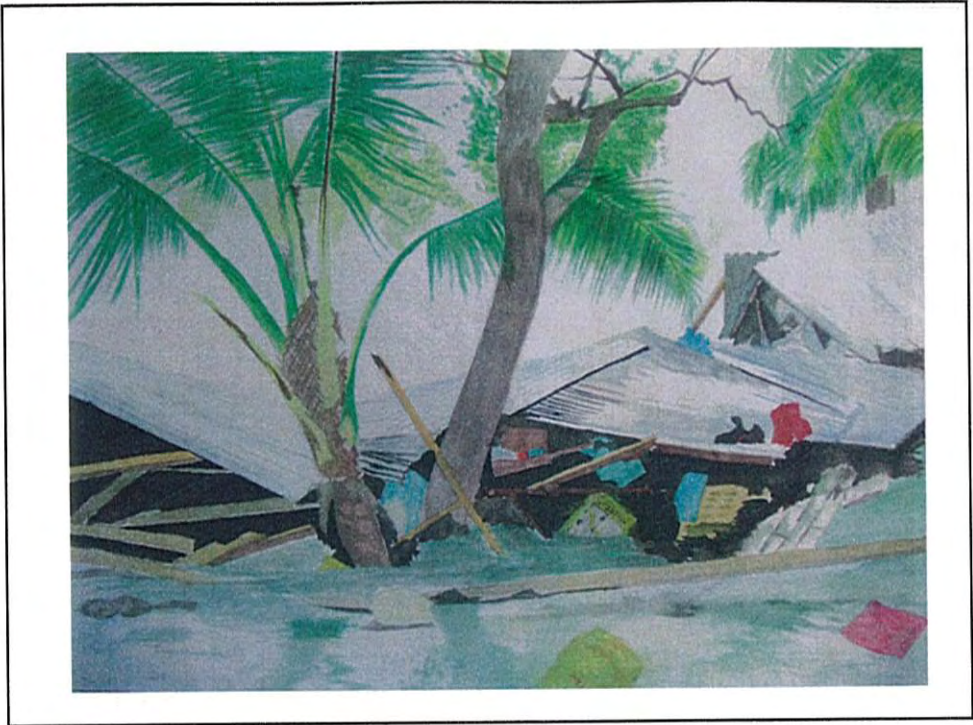


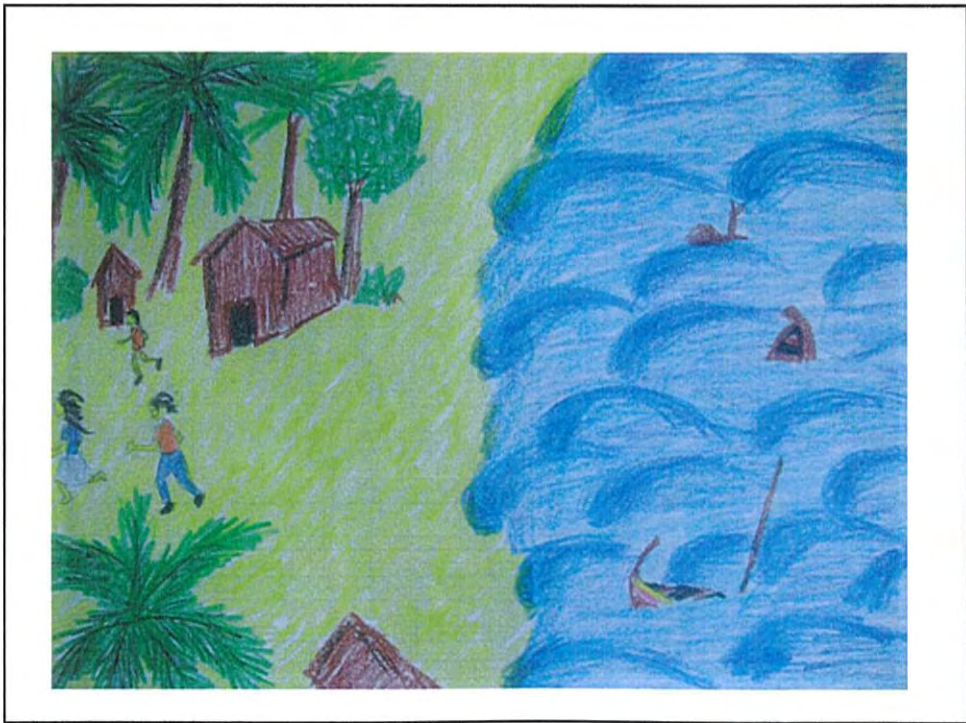
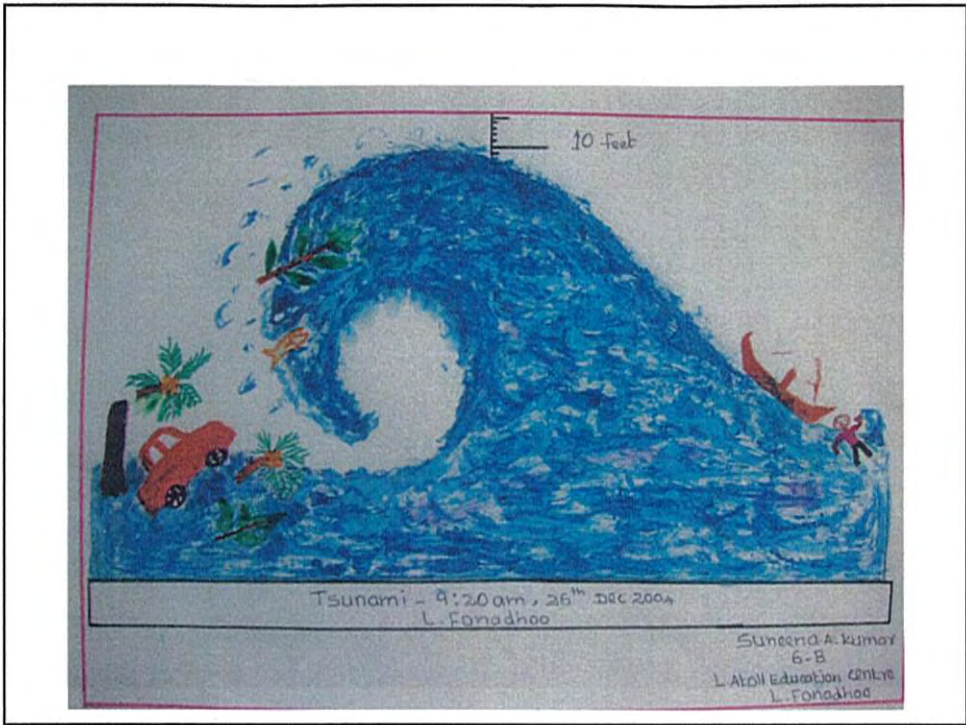
## **Education at Fonadhoo Education Centre**



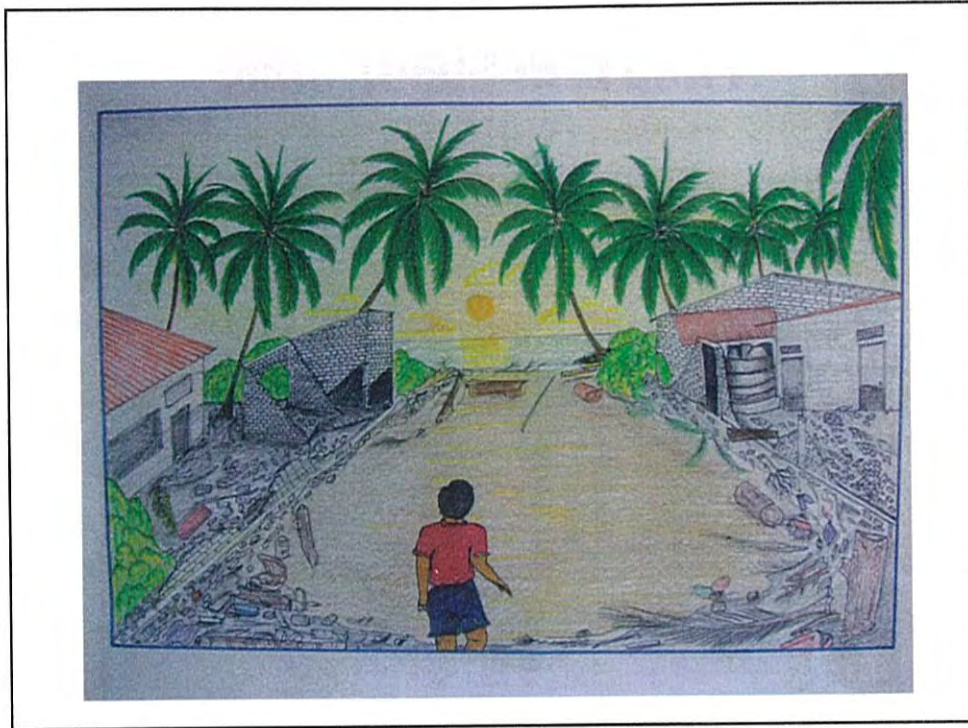
## **Memumental Pictures of Tsunami drawn by the Students**











## ♪ Song of P.R.S.S ♪

### 1. Tsunami-monster is coming

Roar~ Bali bali, the big waves is coming  
Kya~, frightening but don't be in panic

Sing the Passwords of saving our life

♪ Don't Push, Don't Return

Don't Scream, Don't Stop

Don't Push, Don't Return

Don't Scream, Don't Stop

**P-R-S-S** ♪



### 2. Quake happened, move to higher ground

Let's escape to higher place

Don't be in panic! Don't scream! Be calm!

Follow the key ward **P-R-S-S** Let's Escape !!

♪ Repeat ♪

Don't be in panic  
Join hands to hands  
Harambee !!



Song of **P.R.S.S** was modified based on "Song of O · HA · SHI · MO (in Japanese)" produced by Futto primary school in Aichi prefecture in Japan. In order to make this song, students in Futto primary school gave ideas of the lyric and music and the teachers wrapped up the song in 2003.



## PRSS (OHASIMO) Song



## PRSS (OHASIMO) Song

