

1-4-2) Group Casting/Forging

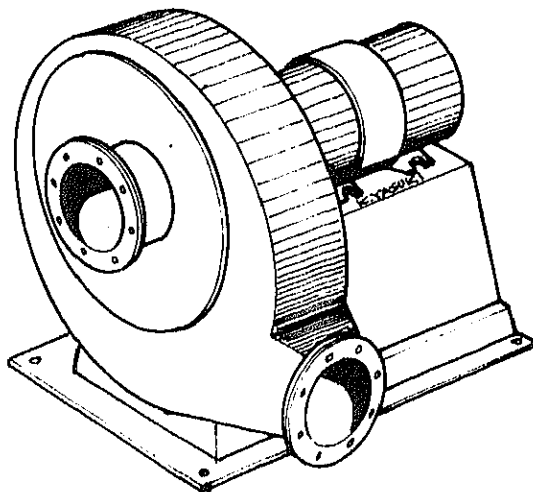
Item No.		Qty
1)	Turbo Blower	5
	Motor : 0.75KW, 3 phase	
	Discharge opening diameter: 115mm	
	Runner external diameter : 330mm	
	Wind volume : 10m ³ /min.	
	Wind pressure : 10mm Aq.	
	with flange	
	Type TB-10	
2)	Graphitemelting Pot	2
	Capacity : 250kg	
	Diameter : 430mm	
	Height : 575mm	
	Type No.250	

1-4-2

Item No. 1

Name Turbo Blower

Type TB-10



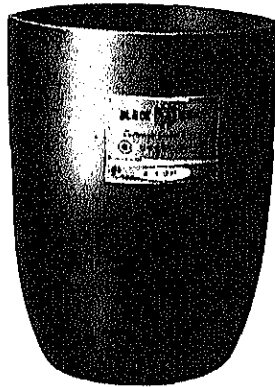
CONSTRUCTION PROJECT OF AUTOMOBILE REPAIR & MAINTENANCE WORKSHOP IN BANGLADESH	DATE
	SCALE
TITLE OF DRAWING	ORG. NO. —
JAPAN INTERNATIONAL COOPERATION AGENCY	

1-4-2

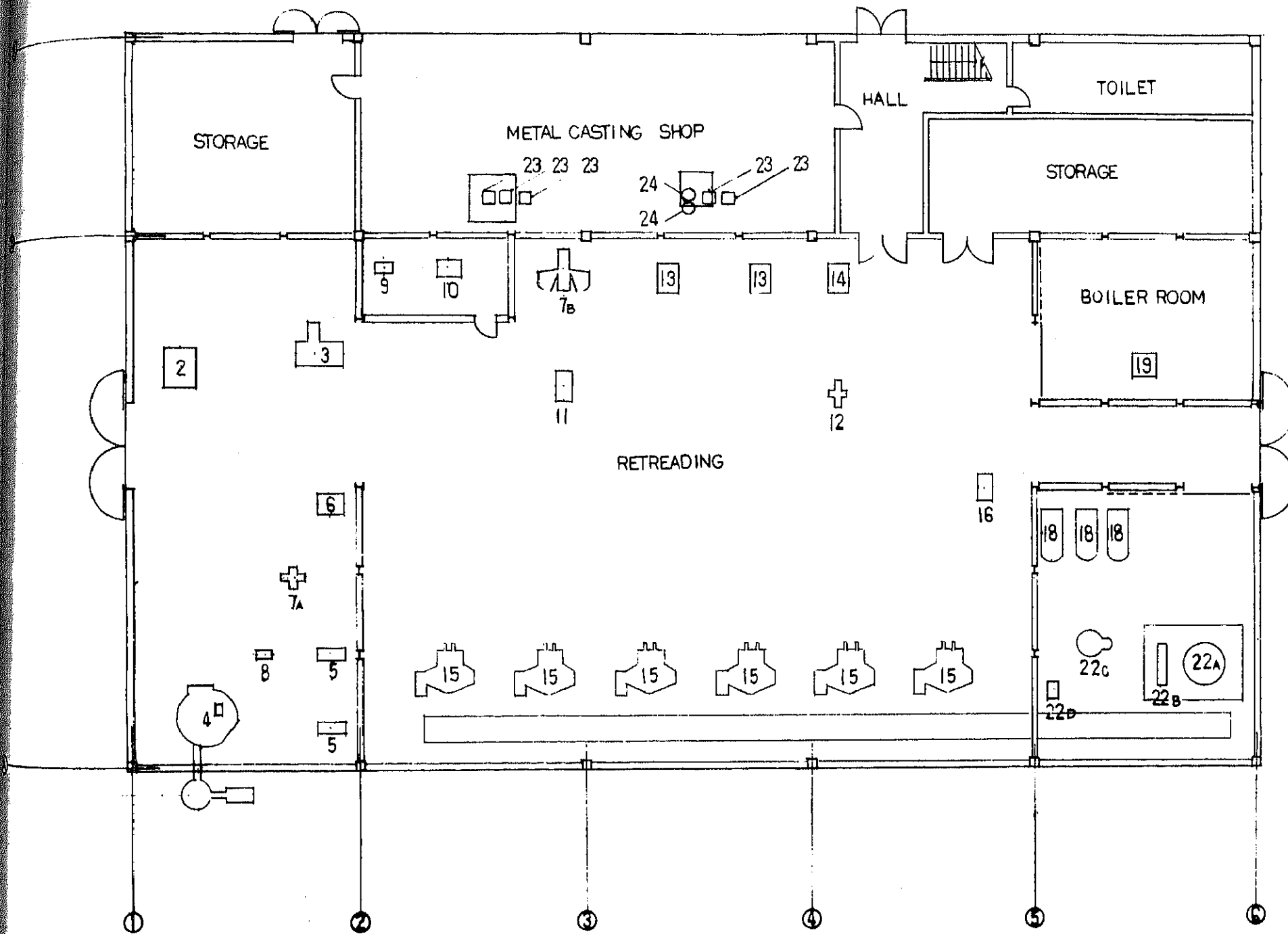
Item No. 2

Name Graphitemelting Pot

Type No.250



CONSTRUCTION PROJECT OF AUTOMOBILE REPAIR & MAINTENANCE WORKSHOP IN BANGLADESH	DATE
	SCALE
TITLE OF DRAWING	ORG. NO. —
JAPAN INTERNATIONAL COOPERATION AGENCY	



1	GARGE JACK
2	TIRE SEPARATOR
3	TIRE INSPECTION
4	BUFFING
5	WORKING TRIMMER TABLE
6	WORKING TABLE
7A	TIRE SPREADER
7B	TIRE SPREADER
8	FLEIBLE GRINDER
9	RUBBER CEMENT MIXER
10	RUBBER CEMENT SPRAYING MACHINE
11	WORKING TABLE
12	TIRE SPREADER
13	TIRE TREAD BUILDER
14	WORKING TABLE
15	CURING PRESS
16	WORKING TABLE
17	REPAIR TOOL AND BUFFING TOOLS
18	AIR COMPRESSOR
19	BOILER
20	SPARE PARTS
21	SPARE PARTS FOR BOILER
22A	TRANSIT TANK FOR H.W.S
22B	PRESSURE PUMP FOR H.W.S
22C	PRESSURE TANK
22D	CIRCULATION PUMP
23	TURBO BLOWER
24	GRAPHITE MELTING POT

CONSTRUCTION PROJECT		DATE
OF		SCALE
AUTOMOBILE REPAIR MAINTENANCE WORKSHOP		
IN INDIA		
TITLE OF DRAWING		DRAWING NO.
RETRADING METAL CASTING FACTORY		G-106
JAPAN INTERNATIONAL COOPERATION AGENCY		

1-5) Air Compressor

Item No.

Qty

1) Air Compressor

5

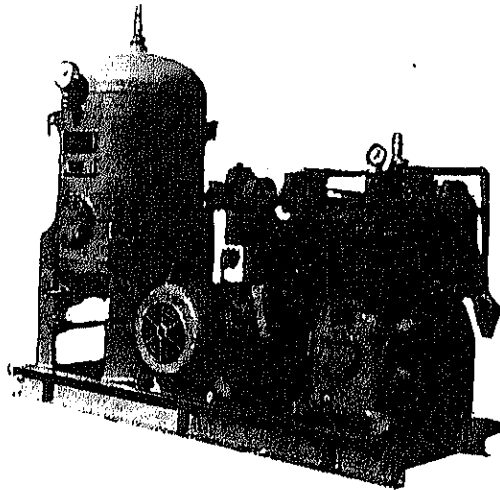
Cylinder bore : 165mm x 1
65mm x 1
Stroke : 140mm
Power : 22KW
Piston displacement : 2.16m³/min.
Air receiver : 200 lit
with operation switch board
Unloader devise, after cooler
Air regulator and air pipings
Type VD-2-22
Drawing No.G-010

---1-5---

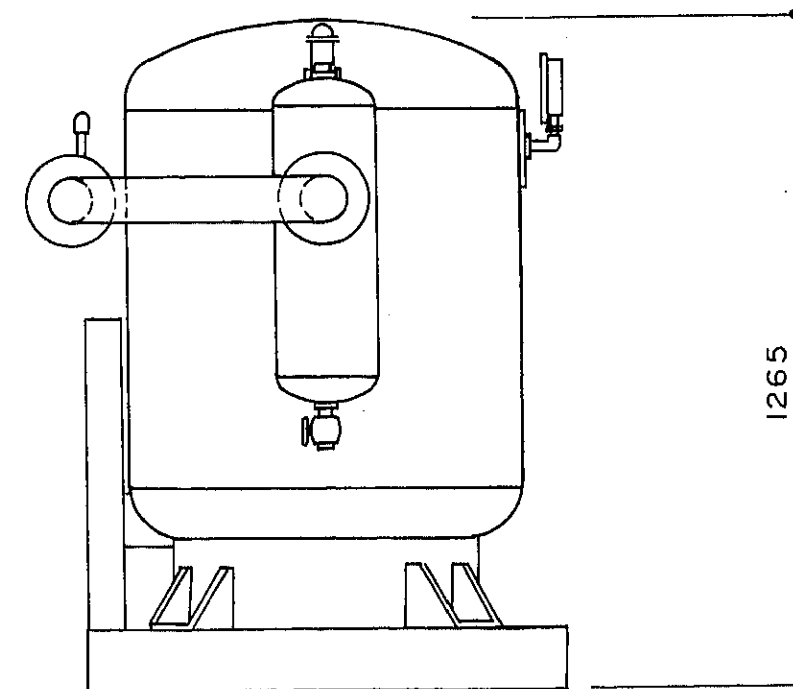
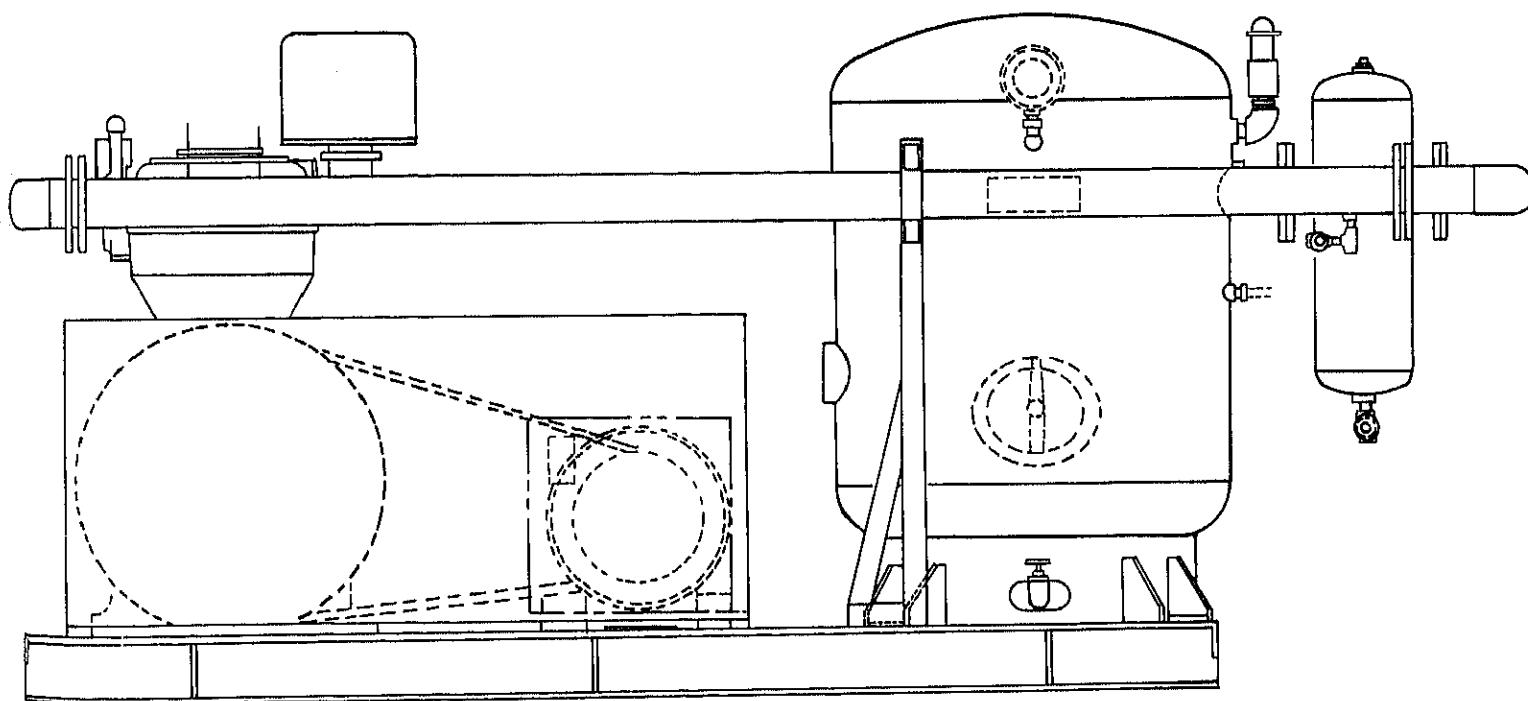
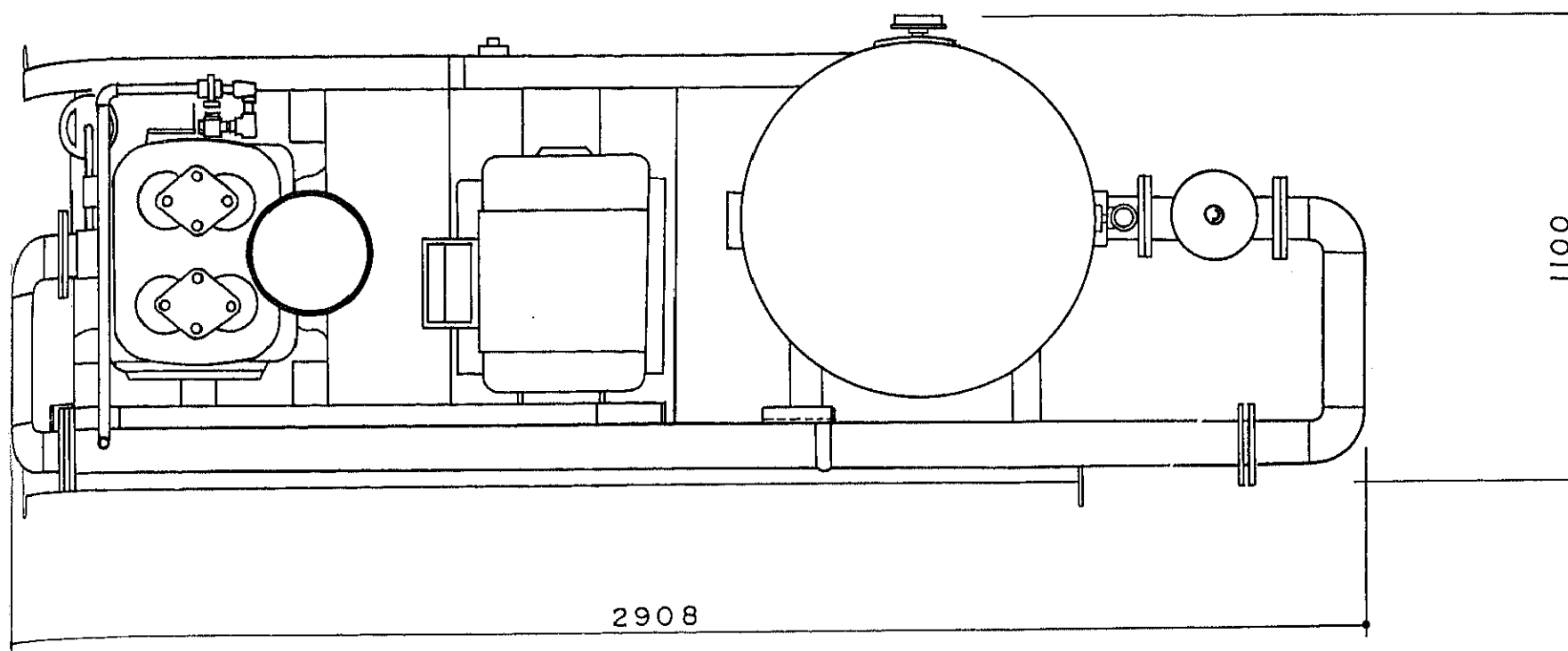
Item No. 1-1/2

Name Air Compressor

Type VD-2-22



CONSTRUCTION PROJECT OF AUTOMOBILE REPAIR & MAINTENANCE WORKSHOP IN BANGLADESH	DATE
	SCALE
TITLE OF DRAWING	DRG. NO. ---
JAPAN INTERNATIONAL COOPERATION AGENCY	



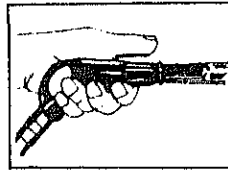
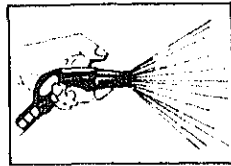
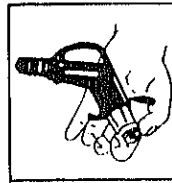
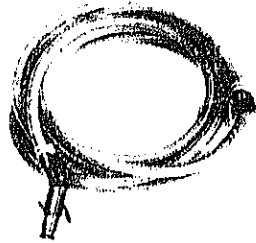
1-5
 Item NO. 1-2/2
 Name Air Compressor
 Type VD-2-22

CONSTRUCTION PROJECT OF AUTOMOBILE REPAIR & MAINTENANCE WORKSHOP IN BANGLADESH		DATE
TITLE OF DRAWING AIR COMPRESSOR		SCALE
JAPAN INTERNATIONAL COOPERATION AGENCY		DRG. NO 6 - 010

1-6) Car Washer		Qty
Item No.		
1)	Steam Cleaner	12
	Discharge : 1,600 lit/h	
	Pressure : 10 - 13kg/cm ² constant 20kg/cm ² max.	
	Fuel consumption : 15 - 17 lit/h	
	Motor : 1.5KW, 3 phase	
	Type 1600	
	Refer to 1-1-5, Item No.3	
2)	Hose	10
	Hose length : 19φ, ID x 20m with gun	
	Type WG-1920	
3)	Brush	8
	Size : 250 x 1,350mm	
	Type 250N	
	Refer to 1-1-5, Item No.11	
4)	Car Washing Brush	12
	Type AMG	

1-6

Item No.	2
Name	Hose
Type	WG-1920



CONSTRUCTION PROJECT OF AUTOMOBILE REPAIR & MAINTENANCE WORKSHOP IN BANGLADESH	DATE
	SCALE
TITLE OF DRAWING	ORG. NO. —
JAPAN INTERNATIONAL COOPERATION AGENCY	

---1-6---

Item No. 4

Name Car Washing Brush

Type AMG



CONSTRUCTION PROJECT OF AUTOMOBILE REPAIR & MAINTENANCE WORKSHOP IN BANGLADESH	DATE
	SCALE
TITLE OF DRAWING	DRG. NO. —
JAPAN INTERNATIONAL COOPERATION AGENCY	

CHAPTER 2, TOOLS AND MACHINERIES TO BE USED IN PHASE 2

2-1) Inspection Factory

2-1-1) Groupe Inspection Shop

Item No.		Qty
1)	Speedometer Tester	2
	Axle weight allowance : 6,000kg	
	Space between rollers : 450mm	
	Roller, dia. x length : 185 x 1,000mm	
	Dimension : 528 x 3,120 x 840mm	
	Type SM-300-2	
	Drawing No.G-011	
2)	Brake Tester	2
	Axle weight allowance : 6,000kg	
	Max. brake force per wheel: 2,000kg	
	Measurable range of brake force: 80 - 2,000kg	
	Roller, dia. x length : 105 x 1,000mm	
	Type BBT-204A	
	Drawing No.G-012	
3)	Side Slip Tester	2
	Axle weight allowance : 6,000kg	
	Tread range : 750 x 2,450mm	
	Wheel plate size : 850 x 500mm	
	Pedestal height : 1,875mm	
	Dimension : 3,620 x 608 x 140mm	
	Type WG-300D-2	
	Drawing No.G-013	
4)	Wheel Alignment Tester	2
	Camber scale : -5°, +5°	
	Caster scale : -3° - 0 - +10°	
	Size : 230 x 90mm	
	MB-30DK Turning radius gauge	

Item No.

Qty

Turn table dia. : 300mm
Dimension : 460 x 550mm
Type MB-40E

5) Headlight Tester

Testing distance : 1M front
Photometer, max. scale : 400 x 10² cd
min. scale : 10 x 10² cd
Type HT-200

6) Tool Stand

Dimension : 620(W) x 460(D) x 800(H)mm
Interchangeable tray : 4 steps
Type TS-34
Refer to 1-1-1, Item No.10

7) Table

Dimension : 1,000(W) x 700(D) x 700(H)mm
with seat
Type 3616DL/2218ZZ
Refer to 1-1-1, Item No.8

8) Auto Lift

Capacity : 8 ton
Lift : 1,500mm
Plunger dia. : 264 x 264mm
Distance between lift : 5,000mm
Type WSL-80, Twin post type
Drawing No. G-001
Refer to 1-1-5, Item No.6

Item No.

9) Tool Stand

Dimension : 620(W) x 460(D) x 800(H)mm

Interchangeable tray : 4 steps

Type TS-34

Refer to 1-1-1, Item No.10

10) Auto Lub

Oil lub pump mounted on drum dolly with siphon,
dispensing hose

Grip meter (E-18-230) : 1ℓ - 10ℓ

Pump : (KP-110)

pneumatic type, with air regulator

cylinder dia. : 110mm ϕ

capacity : 5.5ℓ/min.

Air pressure required max.: 7kg/cm²

Type AL-205

Refer to 1-1-3, Item No.25

11) Drum Greaser

Grease lub pump mounted on drum dolly with lubrication
hose and high pressure

Gun (850 - 204)

Pump is to be mounted with follow plate and drain cover

Lub pump (DR-110A45)

Pneumatic type, with air regulator power

Ratio : 45 : 1

Cylinder dia. : 110mm ϕ

Air pressure required max.: 7kg/cm²

Type DL-142

Refer to 1-1-3, Item No.18

No.

1) Table

Dimension : 1,000(W) x 700(D) x 700(H)mm
with seat
Type 3616DL/2218ZZ
Refer to 1-1-1, Item No.8

Qty

1

2) Touch up Tool

Consist of	:	BH-16	Ball plain hammer
		H-28	Combination plier
		BS-8	Adjustable wrench
		3BH	Screwdriver
		6BH	- do -
		8BH	- do -
		No.1B	Cross driver
		No.2B	- do -
		No.3B	- do -
		80H	High tension test driver
		BT-9	Open end wrench set
		BT-62	Double offset wrench set
		BT-65M	Ignition wrench set
		172M	Thickness gauge set
		No.30M	Socket wrench set
		CT-8	Cutting plier
		PW-1418	Plug wrench
		PW-1012	- do -
		WR-1	Folding rule
		C-1	Flat chisel
		C-20	Center punch
			Cotter pin assortment set
			Spring washer assortment set
		PO-10	Piltol oiler
		100C	Inspection lamp
		TB-80	Tool box

1

Type No. 1000M

Item No.

14) Water Hose

Hose length : 19 ϕ , ID x 20m with gun
Type WG-1920
Refer to 1-6, Item No.2

15) Black Board

Size : 1,800 x 900mm
Double side
Type 4391ZE
Refer to 1-3-1, Item No.57

(Pre-Inspection)

16) Test Hammer

Nominal weight : 250g
Type TH-842

17) Rubber Hammer

Nominal weight : 650g
Type RH-24

18) Inspection Lamp

Cord length : 7.7m
Type WL-30
Refer to 1-1-2, Item No.7

19) Air Gun

Weight : 0.8kg
Length : 76 + 80mm, L type
with PS coupler, nipple
Type ABG-320
Refer to 1-1-2, Item No.12

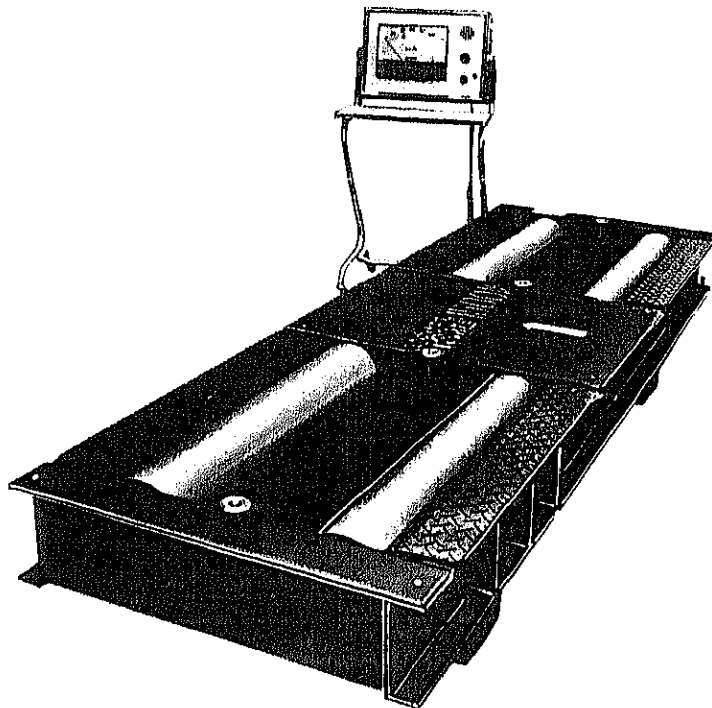
No.	Qty
<p>Air Hose</p> <p>Hose length : 6mm ϕ x 10m</p> <p>Type CH-210</p> <p>Refer to 1-1-5, Item No.9</p>	4
<p>Water Hose</p> <p>Hose length : 19mm ϕ x 20m</p> <p>with gun</p> <p>Type WG-1920</p> <p>Refer to 1-6, Item No.2</p>	2
<p>Brush</p> <p>Size : 250 x 1,350mm</p> <p>Type 250N</p> <p>Refer to 1-1-5, Item No.11</p>	4
<p>Table Seat</p> <p>Dimension : 1,000(W) x 700(D) x 700(H)mm</p> <p>with seat</p> <p>Type 3616DL/2218ZZ</p> <p>Refer to 1-1-1, Item No.8</p>	1

2-1-1

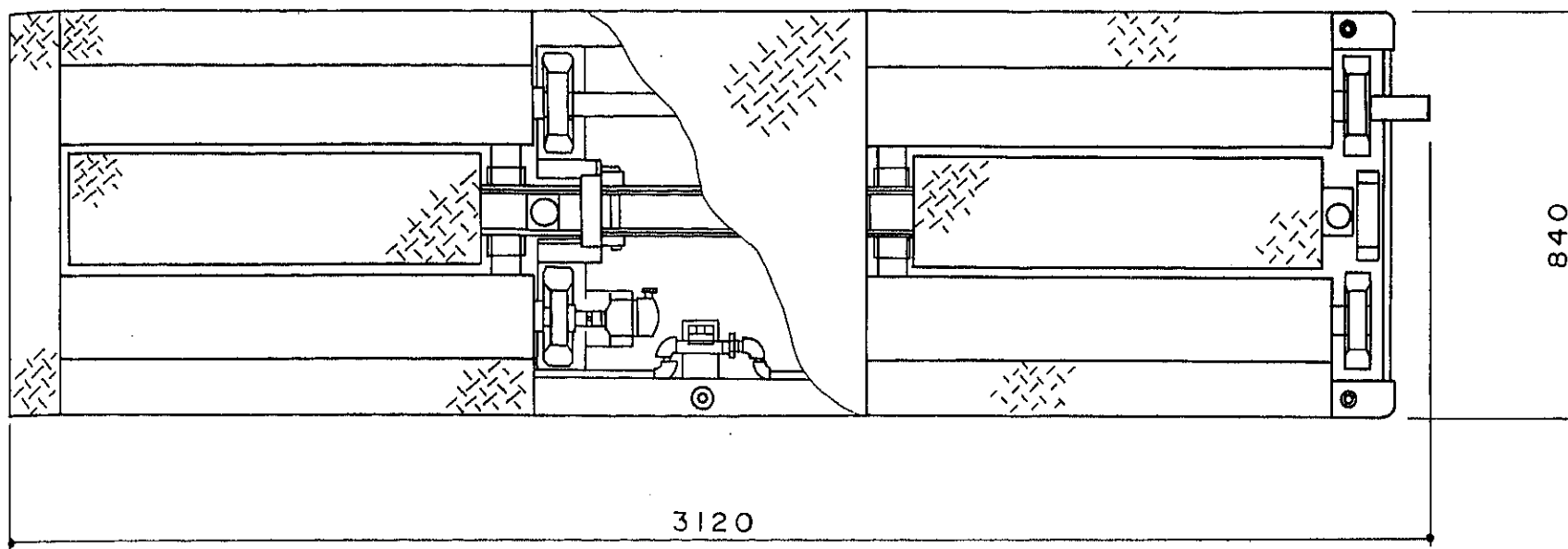
Item No. 1-1/2

Name Speedmeter Tester

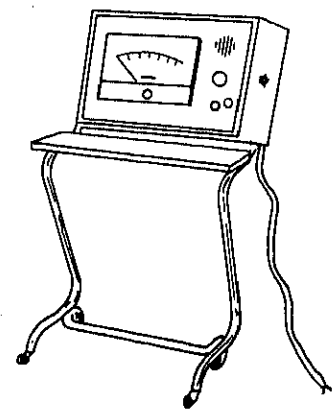
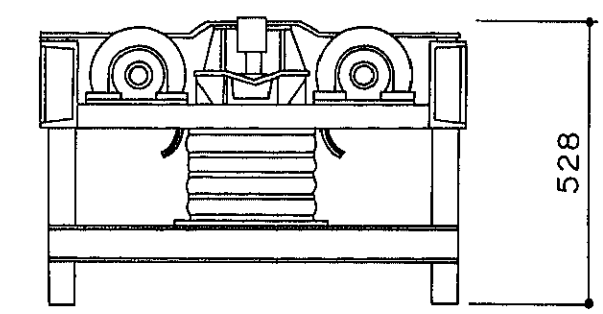
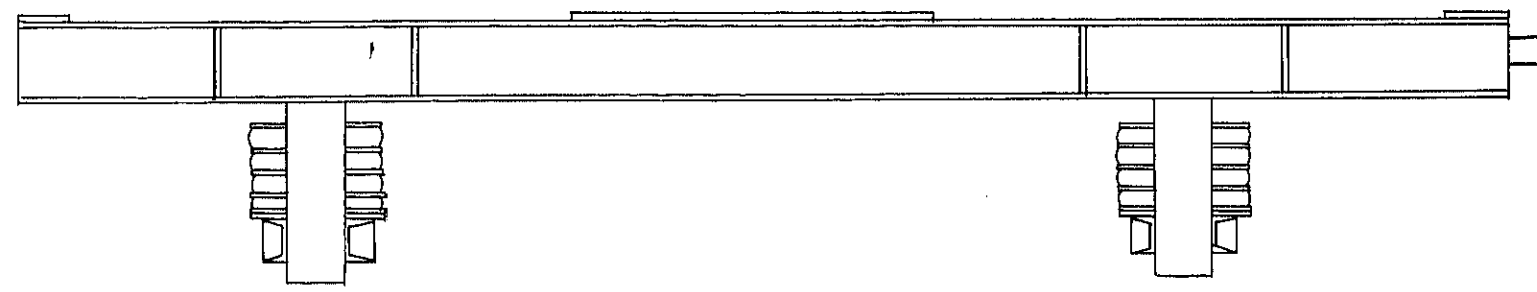
Type SM-300-2



CONSTRUCTION PROJECT OF AUTOMOBILE REPAIR & MAINTENANCE WORKSHOP IN BANGLADESH	DATE
	SCALE
TITLE OF DRAWING	DRG. NO. —
JAPAN INTERNATIONAL COOPERATION AGENCY	



---2-1-1---
 Item NO. 1-2/2
 Name Speedmeter Tester
 Type SM-300-2



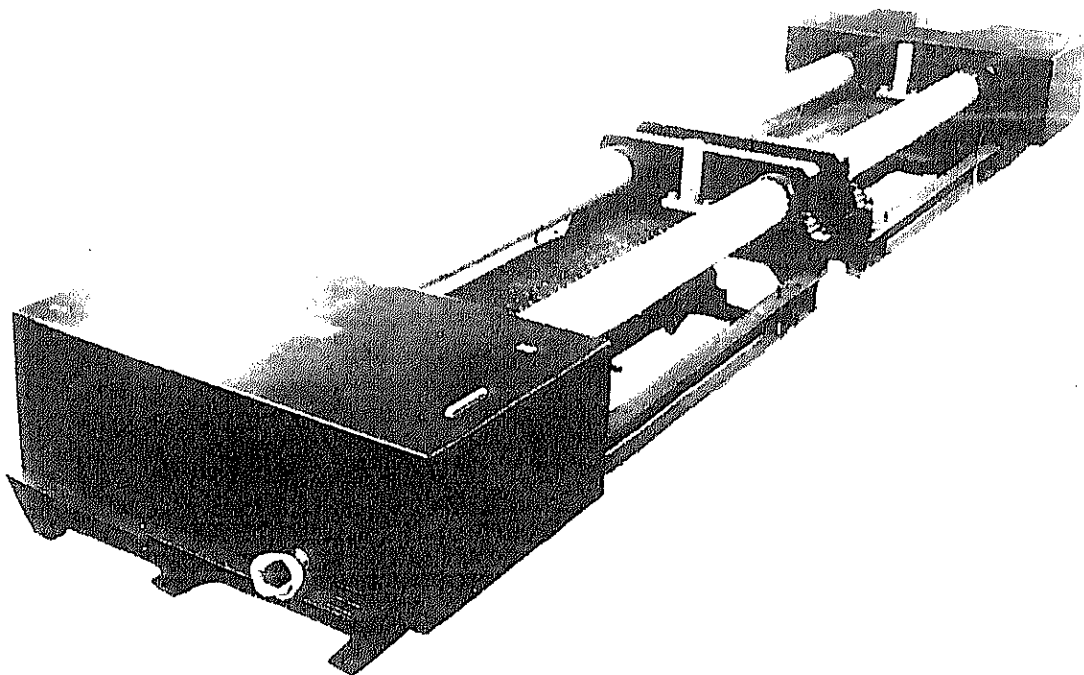
CONSTRUCTION PROJECT OF AUTOMOBILE REPAIR & MAINTENANCE WORKSHOP IN BANGLADESH		DATE
		SCALE
TITLE OF DRAWING SPEEDOMETER TESTER		DRG. NO. G — 011
JAPAN INTERNATIONAL COOPERATION AGENCY		

---2-1-1---

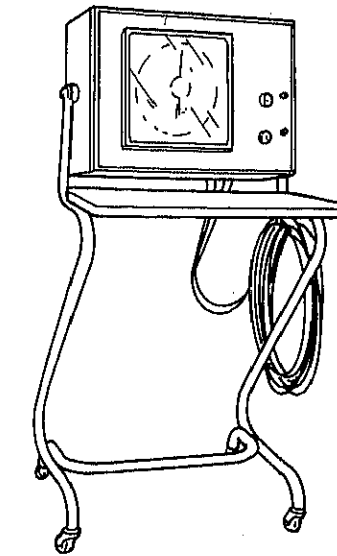
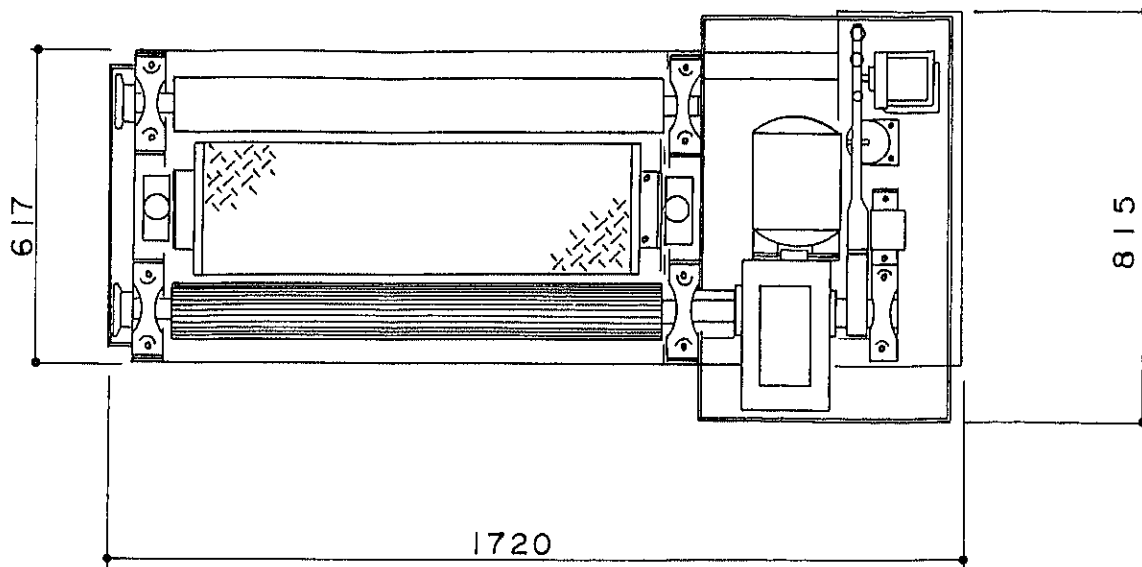
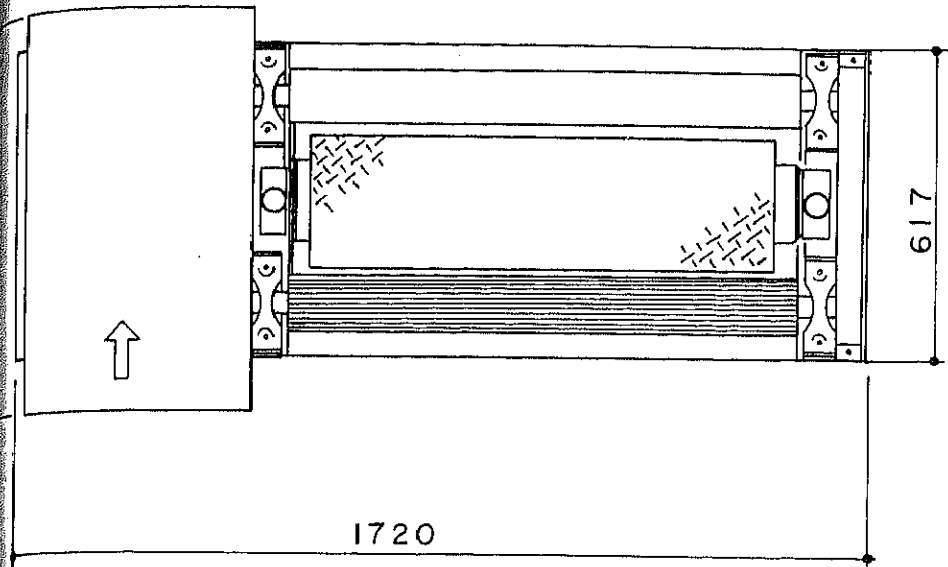
Item No. 2-1/2

Name Brake Tester

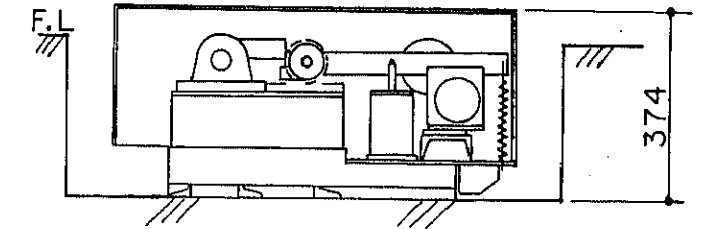
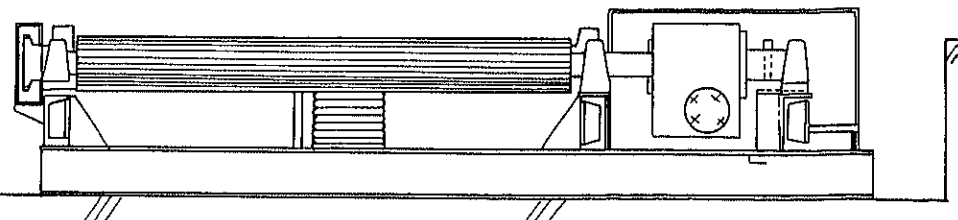
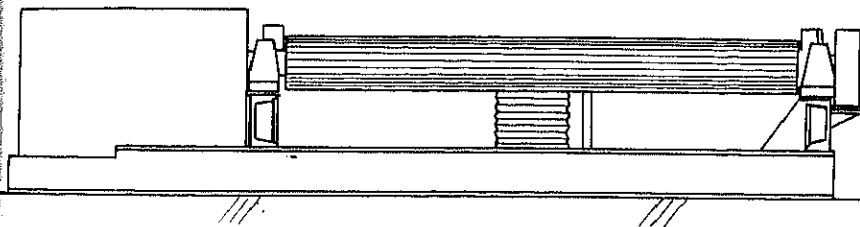
Type BBT-204A



CONSTRUCTION PROJECT OF AUTOMOBILE REPAIR & MAINTENANCE WORKSHOP IN BANGLADESH	DATE
	SCALE
TITLE OF DRAWING	DRG. NO. —
JAPAN INTERNATIONAL COOPERATION AGENCY	



METER CABINET



---2-1-1---

Item NO. 2-2/2

Name Brake Tester

Type BBT-204A

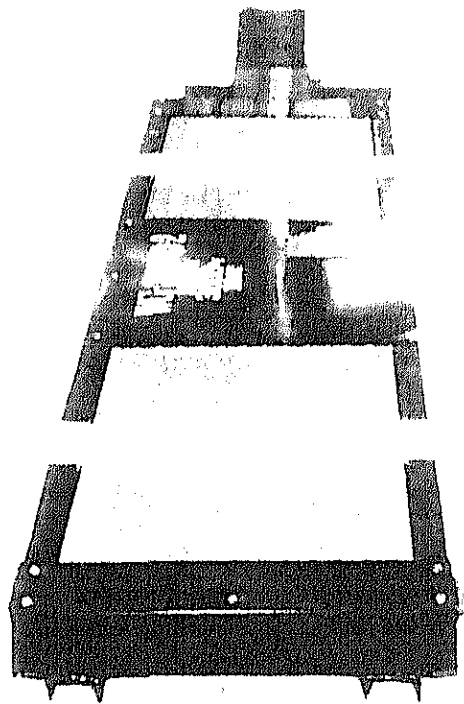
CONSTRUCTION PROJECT OF AUTOMOBILE REPAIR & MAINTENANCE WORKSHOP IN BANGLADESH		DATE
TITLE OF DRAWING BRAKE TESTER		SCALE
JAPAN INTERNATIONAL COOPERATION AGENCY		DRG. NO G-012

2-1-1

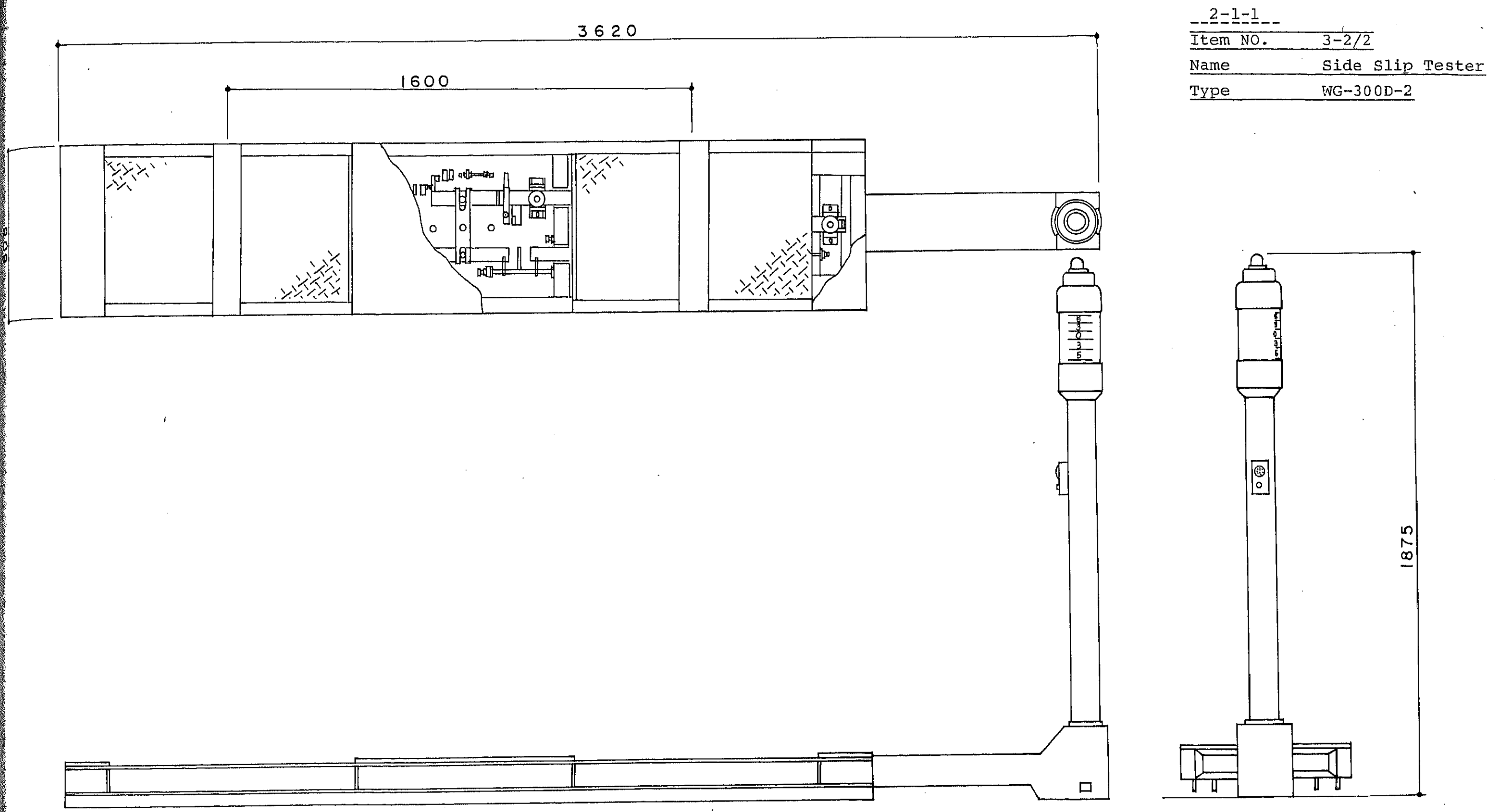
Item No. 3-1/2

Name Side Slip Tester

Type WG-300D-2



CONSTRUCTION PROJECT OF AUTOMOBILE REPAIR & MAINTENANCE WORKSHOP IN BANGLADESH	DATE
	SCALE
TITLE OF DRAWING	DRG. NO. —
JAPAN INTERNATIONAL COOPERATION AGENCY	



2-1-1
 Item NO. 3-2/2
 Name Side Slip Tester
 Type WG-300D-2

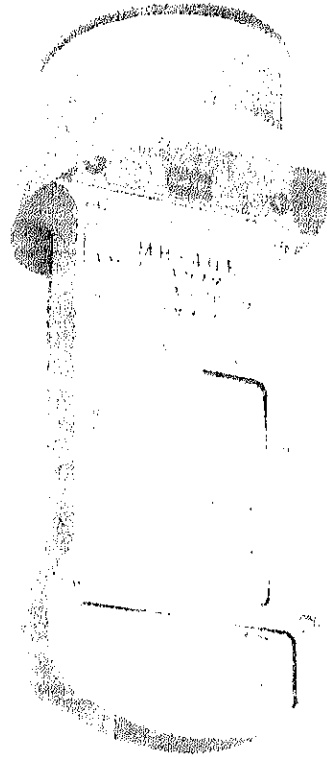
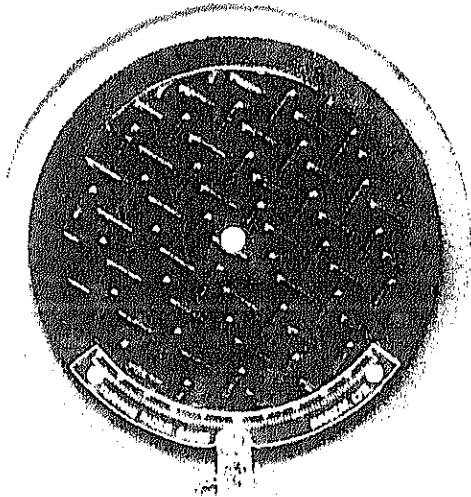
CONSTRUCTION PROJECT OF AUTOMOBILE REPAIR & MAINTENANCE WORKSHOP IN BANGLADESH		DATE
		SCALE
TITLE OF DRAWING SIDE SLIP TESTER		DRG. NO. G-013
JAPAN INTERNATIONAL COOPERATION AGENCY		

2-1-1

Item No. 4

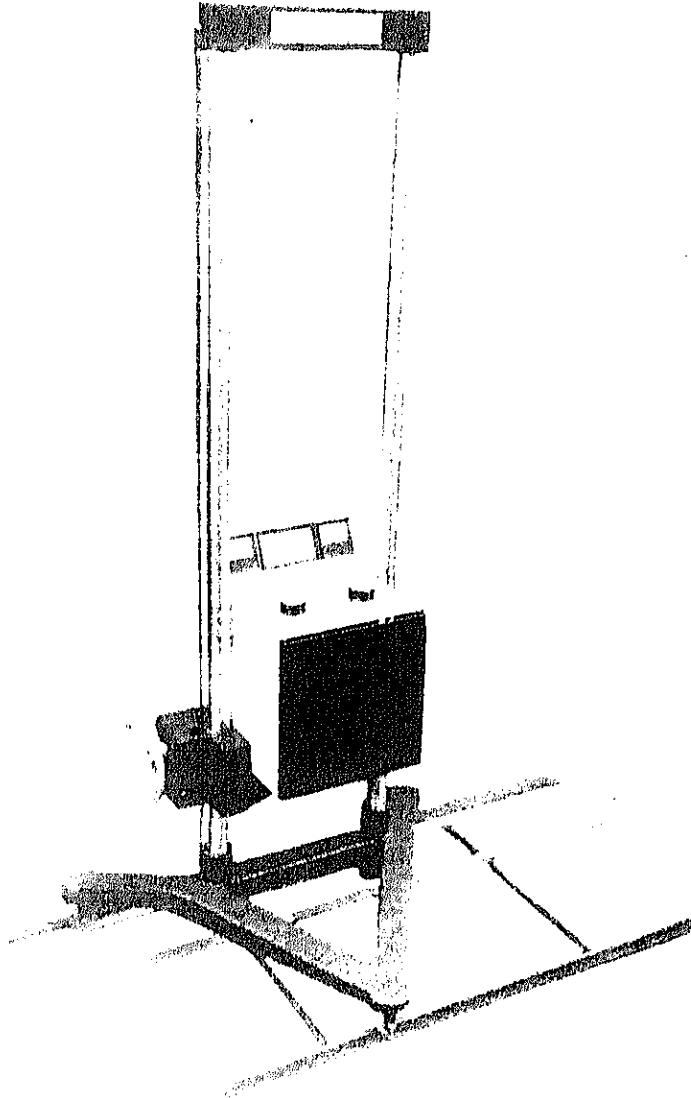
Name Wheel Alignment Tester

Type MB-40E, MB-56F, MB-30DK



CONSTRUCTION PROJECT OF		DATE
AUTOMOBILE REPAIR & MAINTENANCE WORKSHOP IN BANGLADESH		SCALE
TITLE OF DRAWING		DRG. NO. —
JAPAN INTERNATIONAL COOPERATION AGENCY		

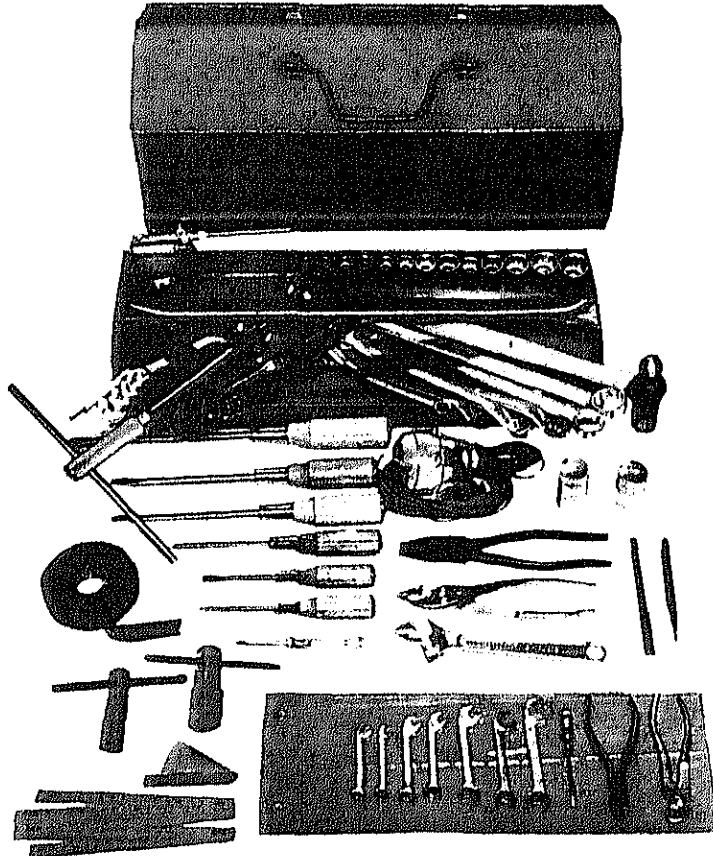
2-1-1
Item No. 5
Name Headlight Tester
Type HT-200



CONSTRUCTION PROJECT OF AUTOMOBILE REPAIR & MAINTENANCE WORKSHOP IN BANGLADESH	DATE
	SCALE
TITLE OF DRAWING	DRG. NO.
JAPAN INTERNATIONAL COOPERATION AGENCY	

2-1-1

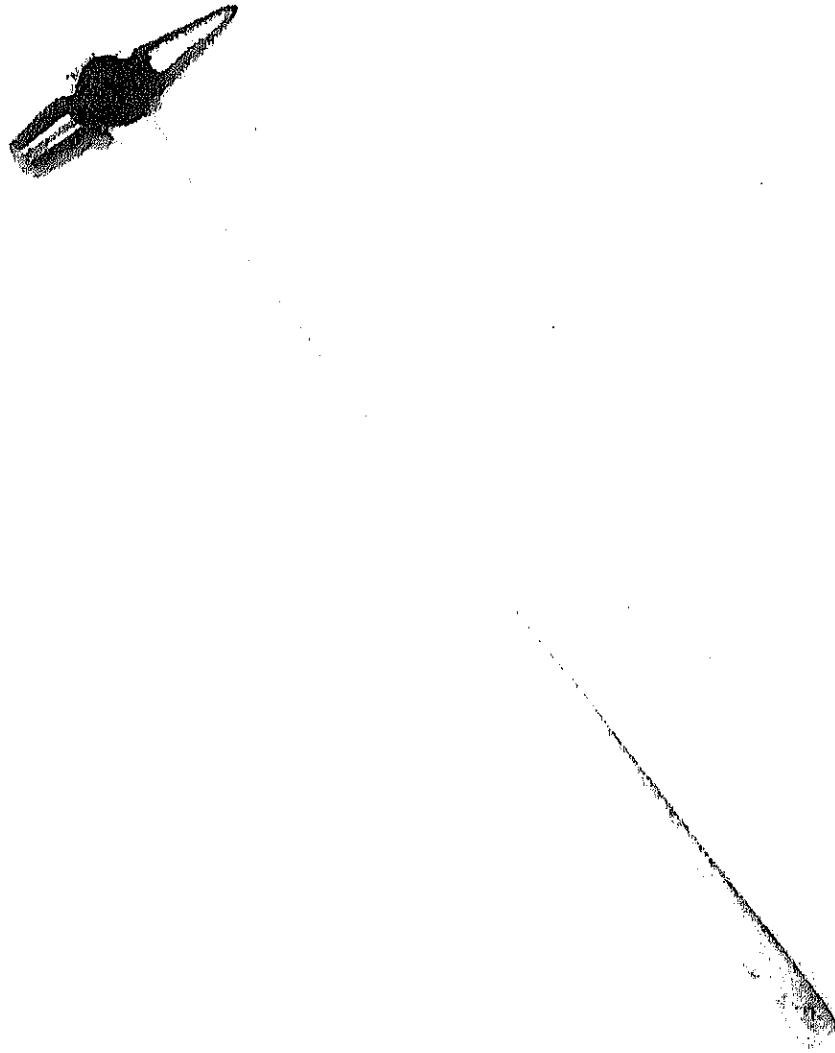
Item No. 13
Name Touch Up Tool
Type No. 1000M



CONSTRUCTION PROJECT OF AUTOMOBILE REPAIR & MAINTENANCE WORKSHOP IN BANGLADESH	DATE
	SCALE
TITLE OF DRAWING	ORG. NO. —
JAPAN INTERNATIONAL COOPERATION AGENCY	

2-1-1

Item No.	16
Name	Test Hammer
Type	TH-842



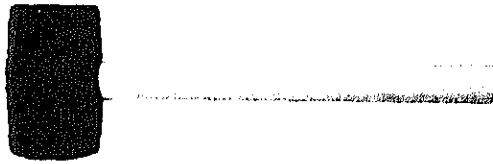
CONSTRUCTION PROJECT OF AUTOMOBILE REPAIR & MAINTENANCE WORKSHOP IN BANGLADESH	DATE
	SCALE
TITLE OF DRAWING	DRG. NO. —
JAPAN INTERNATIONAL COOPERATION AGENCY	

2-1-1

Item No. 17

Name Rubber Hammer

Type RH-24



CONSTRUCTION PROJECT OF AUTOMOBILE REPAIR & MAINTENANCE WORKSHOP IN BANGLADESH	DATE
	SCALE
TITLE OF DRAWING	ORG. NO. —
JAPAN INTERNATIONAL COOPERATION AGENCY	

2-1-2) Group Gas Station

Item No.

Qty

1) Gas Stand Diesel

Consist of : gasoline pump SH-23
under grounding tank 10K lit with tank
band, anchor bolt, inner piping, man hole,
protector and accessories, pipes for
vent and suction
gasoline pump SH-23
capacity: 80 lit/min.
indication: non computing counter with
7 digits totalizer
motor : 0.75KW, 3 phase
hose dia. : 1" with nozzle auto stop

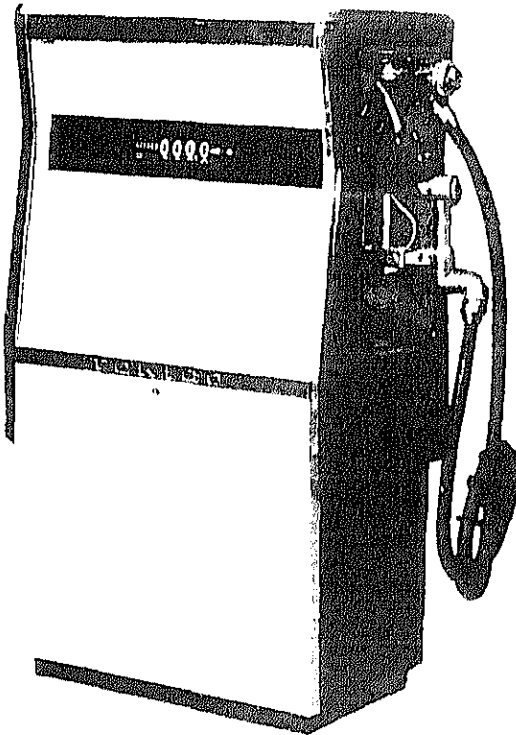
Type SH-23

2-1-2

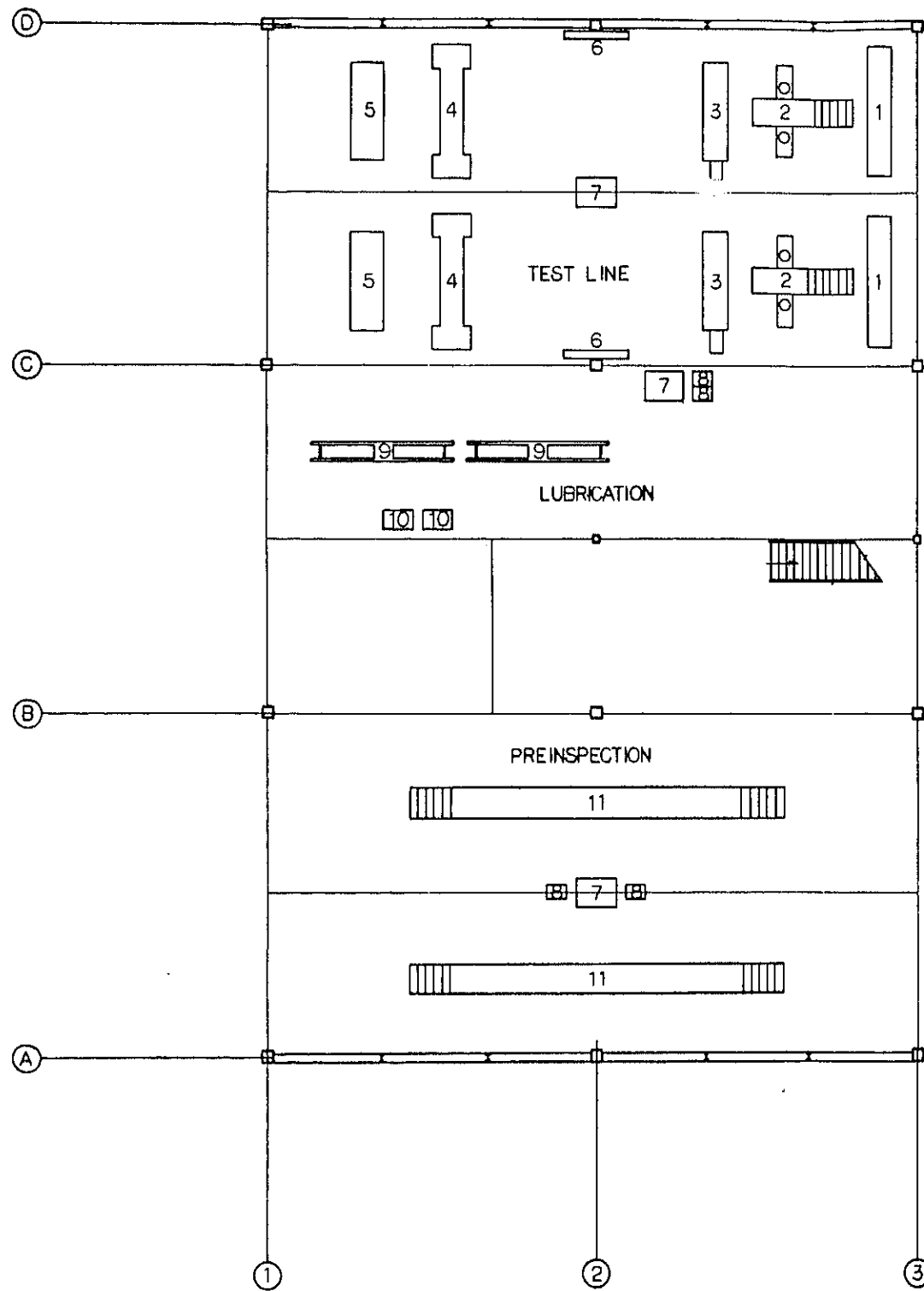
Item NO. 1

Name Gas Stand, Diesel

Type SH-23



CONSTRUCTION PROJECT OF AUTOMOBILE REPAIR & MAINTENANCE WORKSHOP IN BANGLADESH		DATE
TITLE OF DRAWING		SCALE
		ORG. NO. —
JAPAN INTERNATIONAL COOPERATION AGENCY		



1	HEAD LIGHT TESTER
2	WHEEL ALIGNMENT TESTER
3	SIDE SLIP TESTER
4	BRAKE TESTER
5	SPEEDOMETER TESTER
6	BLACK BOARD
7	WRITING TABLE
8	TOOL STAND
9	AUTO LIFT
10	LUB. DRUM SET
11	INSPECTION PIT

CONSTRUCTION PROJECT OF		DATE
AUTOMOBILE REPAIR & MAINTENANCE WORKSHOP IN BANGLADESH		SCALE
TITLE OF DRAWING LAYOUT OF INSPECTION FACTORY		DRG. NO. G-103
JAPAN INTERNATIONAL COOPERATION AGENCY		

2-2) Periodical Repair Factory

Item No.		Qty
1)	Rigid Rack	100
	Capacity : 2.5 + 2.5 ton	
	Saddle : 460 - 760mm	
	Type M-15LB	
	Refer to 1-1-3, Item No.3	
2)	Air Hydraulic Garage Jack	12
	Capacity : 15 ton	
	Saddle height : 175 - 650mm	
	Type MA-1500L	
3)	Hydraulic Garage Jack	12
	Capacity : 5 ton	
	Saddle height : 150 - 560mm	
	Type M-500M	
	Refer to 1-1-3, Item No.3	
4)	Parts Washing Stand	12
	Size : 1,270 x 970 x 690mm	
	Tank capacity : 55 lit - oil	
	45 lit - water	
	Motor : 200W, 1 phase	
	Type WS-25	
	Refer to 1-1-2, Item No.3	
5)	Transmission Jack	25
	Capacity : 800kg	
	Saddle height : 195 - 785mm	
	Saddle inclination : 26° forward	
	10° back ward	
	Saddle sliding : 30mm right & left	
	Type HUIJ-800B Refer to 1-1-2, Item No.1	

No.		Qty
	Surface Plate	4
	Size : 900 x 1,200mm	
	Type SPC-11	
	Wheel Dolly	12
	Capacity : 500kg	
	Arm lift : 60 - 210mm	
	Type WD-1100	
	Refer to 1-1-3, Item No.4	
	Tool Stand	25
	Size : 600(W) x 460(D) x 800(H)mm	
	Interchangeable tray : 4 steps	
	Type TS-34	
	Refer to 1-1-1, Item No.10	
	Arc Welder	6
	Current : 500A	
	Current adjustable : 505 - 90A	
	Electrode : 8 - 3.2mm	
	Primary input : 40 KVA with accessories	
	Type AT-SS-500	
	Refer to 1-1-3, Item No.8	
	Gas Cutting Tool & Regulator Set	6
	Oxy-acetylene regulators, gas welder, gas cutting	
	oxy-acetylene, hose 10m	
	each, etc.	
	Type GS-10	

Item No.

Qty

1) Drum Greaser

8

Grease lub pump mounted on high pressure gun (850-204)

Pump with follow plate are fixed drum

Lub pump (DR-110A45)

Pneumatic type, with air regulator

Power ratio : 45 : 1

Cylinder dia. : 110 ϕ mm

Air pressure required : Max. 7kg/cm²

Type DL-142

Refer to 1-1-3, Item No.18

12) Universal Puller Set

8

Consist of 150HD puller set

T-75 wheel puller, T-26, T-28 gear puller, T-20 terminal

puller, G-61 slide hammer puller, 101S gear puller

each 1 pc. for bus

Type UP-5000

Refer to 1-1-2, Item No.2

13) Air Meter

4

Pressure gauge : 0.2 - 10kg/cm²

Indicator panel size : 364 x 244mm

Stand type

with hose 10m and chuck

Type AT-300

Refer to 1-1-3, Item No.30

14) Work Bench

12

Size : 1,780(W) x 600(D) x 750(H)mm

with two drawers

Type T-1000

Refer to 1-1-1, Item No.2

Item No.	Qty
15) Vice Jaw opening : 155mm Jaw width : 150mm Type UV-150 Refer to 1-1-1, Item No.3	4
16) Service Creeper Bed size : 490 x 920mm with caster wheel Type SC-5B Refer to 1-1-3, Item No.12	50
17) Pedestal Grinding Machine Wheel : 205 x 19 x 15.88mm Motor : 0.4KW, 3 phase with stand Type SGK-T/PFK Refer to 1-1-9, Item No.23	4
18) Brake Fluid Bleeder Tank capacity : 7.6 lit with fluid bag, hose 5m and attachment Type BFB-25	8
19) Bench Drilling Machine Capacity : 13 ϕ mm Swing : 350mm Distance from spindle to table: 400mm Distance from spindle to bed : 565mm Main spindle : 585, 1,170, 2,340 (50Hz) Automatic feed : 0.06, 0.1, 0.14 Type ESD-350AF	4

Item No.

Qty

20) Hydraulic Press

1

Capacity : 60 ton
Ram stroke : 140mm
Distance between frames: 1,130mm
Distance between tables: 205mm
Table, vertical : 750mm
with three blocks
Type HP-100A

21) Air Disc Grinder

4

Wheel : 1,800 ϕ mm
Revolution : 7,000 r.p.m.
Air pressure required: :
Type M-70S
Refer to 1-1-3, Item No.10

22) Bushing Inserter & Remover

4

Bush adaptor : 18 - 42mm 14 pcs. cast iron
25 - 43mm 11 pcs. rubber
and accessories
Type SDE-1000
Refer to 1-1-4, Item No.12

23) Vernier Caliper

4

Range : 0 - 200mm
Graduation : 0.05mm
with depth gauge
Type N-20

No.	Qty
Adjustable Reamer Set Capacity : 12 - 38mm, 11 pcs./set with pilot stem Type PL-44 Refer to 1-1-9, Item No.14	4
Tap & Dies Set Size : 3 x P0.5 - 20 x P2.5 26 pcs. 1/4 NF28 - 1/8 PT28 2 pcs. with wrench, handle and holder Type M-320 Refer to 1-1-9, Item No.12	4
Circuit Tester DC : 0 - 2.5/5/10/25/50V 0 - 250mA, 0 - 20A AC : 0 - 10/50/250/1,000V Type TH-20 Refer to 1-1-3, Item No.45	25
Torque Wrench Range : 0 - 5,600kgf.cm Wrench size : 19mm Type 5600F Refer to 1-1-6, Item No.11	10
Torque Wrench Range : 0 - 2,800kgf.cm Wrench size : 19mm Type 2800F Refer to 1-1-4, Item No.7	10

No.	Qty
9) Air Impact Wrench Bolt capacity : 40mm Square drive : 25.4mm Air pressure required : 6kg/cm ² with sockets for Mitsubishi and Isuzu Type AW-4000T Refer to 1-1-3, Item No.32	12
10) Air Impact Wrench Bolt capacity : 16mm Square drive : 12.7mm Air pressure required : 6kg/cm ² with socket for Mitsubishi and Isuzu Type AW-1600T Refer to 1-1-3, Item No.34	12
11) Air Impact Wrench Bolt capacity : 20mm Square drive : 19mm Air pressure required : 6kg/cm ² with socket for Mitsubishi and Isuzu Type AW-2000 Refer to 1-1-3, Item No.33	12
12) Hand Truck Size : 900 x 600 x 850mm Load : 300kg Type No.101 Refer to 1-1-1, Item No.5	12

No.		Qty
	Battery Tester	4
	Application : 12V, 20 - 200AH	
	Time required : 5 second	
	Type EM-77	
	Air Drill	4
	Capacity : 10mm	
	Revolution : 1,400 r.p.m.	
	Type AD-100A	
	Special Tools for Mitsubishi	4
	Refer to 1-3-4, Item No.2	
	Special Tools for Isuzu	4
	Refer to 1-3-4, Item No.3	
	Fork Lift	2
	Capacity : 1 ton	
	Lift : 3,000mm	
	Free lift : 290mm	
	Lifting speed : 460mm/sec.	
	Wheel base : 1,320mm	
	Tread : 885mm - front	
	890mm - rear	
	Engine : 4G33	
	Power : 30PS/2,400 r.p.m.	
	Torque : 9.7kg-m/1,600 r.p.m.	
	Type FG-10	
	Refer to 1-1-3, Item No.37	

Qty Item No.

4 38) Working Lamp

Cord length : 7.7m

Type WL-30

Refer to 1-1-2, Item No.7

4 39) Drain Cart

Drum capacity : 70 lit

Pneumatic type transformer pump

cylinder dia. : 65mm

capacity : 7 - 8 lit/min.

air pressure required: Max. 7kg/cm

size : 960 x 530 x 160mm

Type DC-77

Refer to 1-1-3, Item No.39

40) Electric Pencil

Power : 1 phase

Type EP-A

Refer to 1-1-3, Item No.40

41) Tool Cabinet

Ten drawers

size : 200 x 300 x 40mm x 3

615 x 300 x 40mm x 1

615 x 300 x 50mm x 1

615 x 300 x 75mm x 1

290 x 320 x 50mm x 2

615 x 320 x 100mm x 1

615 x 320 x 120mm x 1

Overall dimensions : 740 x 400 x 1,220mm

Type TB-100B

Refer to 1-1-6, Item No.5

No.		Qty
	Gasket Punch Set	
	Type H-75	2
	Refer to 1-1-3, Item No.24	
	Chisel & Punch Set	2
	20 pcs./set	
	Flat chisel : 4 pcs. C-1, 2, 3, 4	
	Cape chisel : 2 pcs. C-10, 11	
	Center punch : 1 pc. C-20	
	Prick punch : 1 pc. C-22	
	Long tapered punch : 1 pc. C-31	
	Solid punch : 3 pcs. C-35, 36, 37	
	Pin punch : 5 pcs. C-25, 26, 27, 28, 29	
	Round chisel : 1 pc. C-15	
	Type 320	
	Refer to 1-1-2, Item No.27	
	Impact Driver	25
	With (-) bit and (+) bit, each 3 pcs.	
	Type #2600	
	Refer to 1-1-3, Item No.41	
	Writing Table	12
	Size : 1,000(W) x 700(D) x 700(H)mm	
	with seat	
	Type 3616DL/2218ZZ	
	Refer to 1-1-1, Item No.8	
	Snap Ring Plier Set	12
	Range : 0 - 60 motor stem	
	0 - 55mm for groove	
	Type SPS-4	
	Refer to 1-1-2, Item No.11	

Qty	Item No.		
2	47)	Universal Tool Cabinet Set	
		Consist of :	No.26 Thickness gauge
			BAG-32C Brake adjusting gauge
			No.22M Spark plug gap gauge
2			315 Screw pitch gauge
			SR-1B Stailless holding rule
			BSC-20 Vernier caliper
			No.30M Socket wrench set without case
			long socket: 14, 17, 19, 21, 23, 26, 29mm
			BT-42 Offset box wrench set
			BT-41 - do -
			BT-62 - do -
			BT-52 - do -
			UB-2326 U bolt nut wrench
			UBI-3034 - do -
			T-20 Terminal gear puller
25			T-24 Gear puller
			T-26 - do -
			80H High tension test driver
			250 Stubby driver
			GF Tire gauge
12			U-12 Hacksaw frame
			engineers file: flat 200/300mm round 200mm with handle
			PW-14 Pipe wrench
			BH-24 Ball plain hammer
12			TH-2 Test hammer
			PH-2 Plastic hammer
			ratcheting spanner: 10, 12, 14, 17, 19, 21mm

No.

Qty

E-10	Extension bar
TH-11	T handle
UJ-4	Universal joint
L-120M	Socket wrench set without case offset box wrench set (BT-9/BT-6A/ BT-5/BT-1)
T-106M	Tappet wrench set
T-32HMF	Wheel nut wrench
T-32E	Wheel nut wrench
T-126M	Cross rim wrench
	plastic screw driver: 50, 75, 100, 125, 150mm
	plastic cross: #1, 2, 3, 4
H-26	Combination plier
H-28	- do -
L-26	Thin straight nose plier
M-26	Long nose plier
J-26	Thin bent nose plier
MG-210	Water pump wrench plier
CT-7	Cutting plier
	adjustable wrench (BS-6/8/10)
	Cabinet dimension: 1,020 x 440 x 1,210mm

Type D-3000

Refer to 1-1-3, Item No.46

Qty	Item No.	Qty
	48) Mechanic Tool Set	150
	Consist of : open end wrench 6 x 7, 8 x 9, 10 x 11, 11 x 13, 12 x 14, 14 x 17, 19 x 21mm each 1 pc. box wrench 8 x 9, 10 x 12, 11 x 13, 12 x 14, 17 x 19, 19 x 21, 22 x 24mm each 1 pc. flare nut wrench: 10 x 11, 12 x 14mm each 1 pc. socket wrench for 9.5mm 8, 9, 10, 11, 12, 13, 14, 17, 19, 21, 22, 23, 24mm each 1 pc. ratchet handle, nut spinner handle, sliding T handle, extension bars, universal joint, plug wrench for 9.5mm, adjustable wrench 250mm, plier 200, 150mm, nipper 150mm, hammer 450g - driver 75, 100, 150, 200mm + driver 75, 100, 150mm: stubby driver -, + integral handle driver 280mm thickness gauge, plug gap gauge, flat chisel, center punch, needle file set, point file with case	
	Type CU-305	
	Refer to 1-1-1, Item No.12	
	49) Double Sledge Hammer	4
	Weight : 2.7kg	
	Type DSH-6	

No.

Drum Greaser

Grease lub pump mounted on drum dolly with hose and high pressure gun (850-204)

Pump with follow plate are fixed drum

Cover lub pump (DR-110A x 5)

Pneumatic type with air regulator

Pump ratio : 45 : 1

Cylinder dia. : 110mm

Air pressure required: Max. 7kg/cm²

Type DL-142

Refer to 1-1-3, Item No.18

Qty

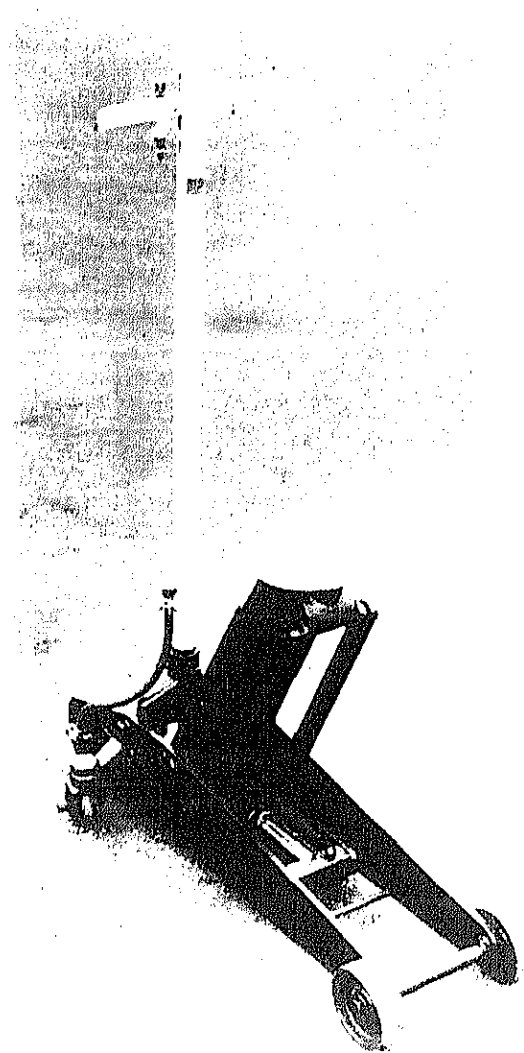
12

2-2

Item No. 2

Name Air Hydraulic Garage Jack

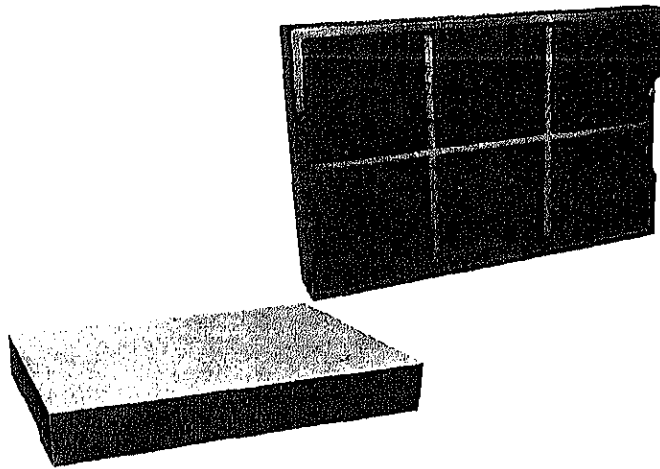
Type MA-1500L



CONSTRUCTION PROJECT OF AUTOMOBILE REPAIR & MAINTENANCE WORKSHOP IN BANGLADESH	DATE
	SCALE
TITLE OF DRAWING	DRG NO. —
JAPAN INTERNATIONAL COOPERATION AGENCY	

2-2

Item No.	6
Name	Surface Plate
Type	SPC-11



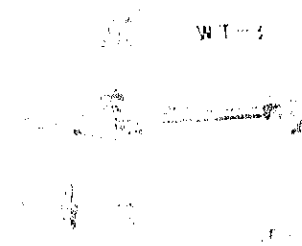
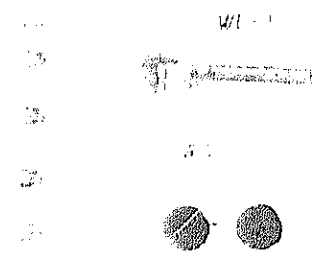
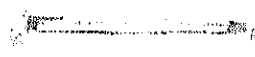
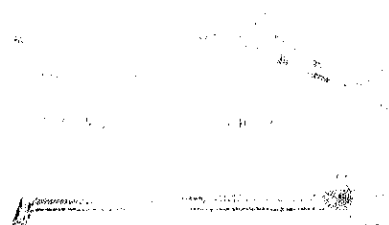
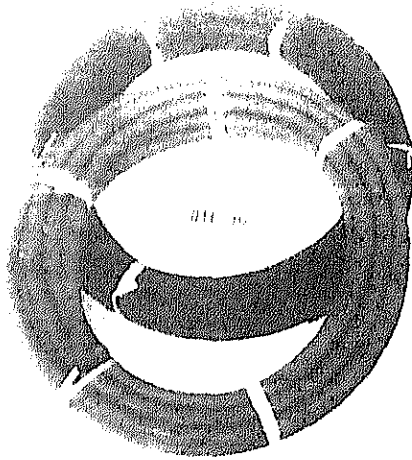
CONSTRUCTION PROJECT OF AUTOMOBILE REPAIR & MAINTENANCE WORKSHOP IN BANGLADESH	DATE
	SCALE
TITLE OF DRAWING	ORG. NO. —
JAPAN INTERNATIONAL COOPERATION AGENCY	

2-2

Item NO. 10

Name Gas Cutting Tool &
Regulator Set

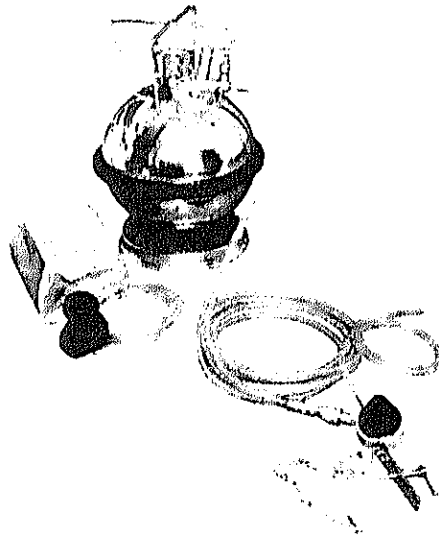
Type GS-10



CONSTRUCTION PROJECT OF AUTOMOBILE REPAIR & MAINTENANCE WORKSHOP IN BANGLADESH		DATE
TITLE OF DRAWING		SCALE
		ORG. NO. —
JAPAN INTERNATIONAL COOPERATION AGENCY		

2-2

Item No.	18
Name	Brake Fluid Bleeder
Type	BFB-25



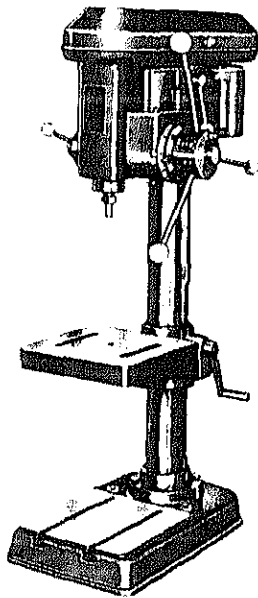
CONSTRUCTION PROJECT OF AUTOMOBILE REPAIR & MAINTENANCE WORKSHOP IN BANGLADESH	DATE
	SCALE
TITLE OF DRAWING	DRG. NO. ---
JAPAN INTERNATIONAL COOPERATION AGENCY	

2-2

Item NO. 19

Name Bench Prilling Machine

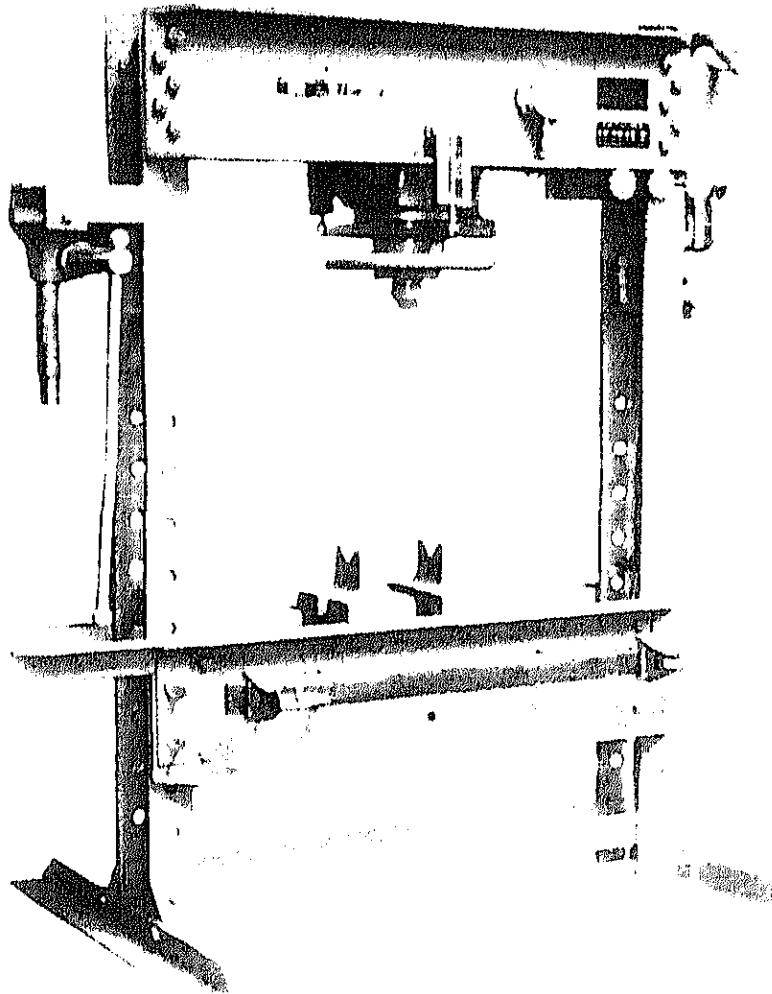
Type ESD-350AF



CONSTRUCTION PROJECT OF AUTOMOBILE REPAIR & MAINTENANCE WORKSHOP IN BANGLADESH	DATE
	SCALE
TITLE OF DRAWING	DRG. NO. —
JAPAN INTERNATIONAL COOPERATION AGENCY	

2-2

Item No.	20
Name	Hydraulic Press
Type	HP-100A



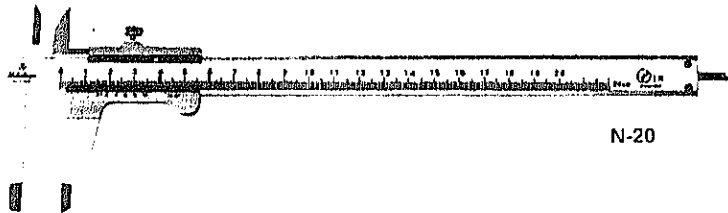
CONSTRUCTION PROJECT OF AUTOMOBILE REPAIR & MAINTENANCE WORKSHOP IN BANGLADESH	DATE
	SCALE
TITLE OF DRAWING	ORG. NO.
JAPAN INTERNATIONAL COOPERATION AGENCY	

---2-2---

Item No. 23

Name Vernier Caliper

Type N-20



CONSTRUCTION PROJECT OF AUTOMOBILE REPAIR & MAINTENANCE WORKSHOP IN BANGLADESH	DATE
	SCALE
TITLE OF DRAWING	ORG. NO. —
JAPAN INTERNATIONAL COOPERATION AGENCY	

2-2

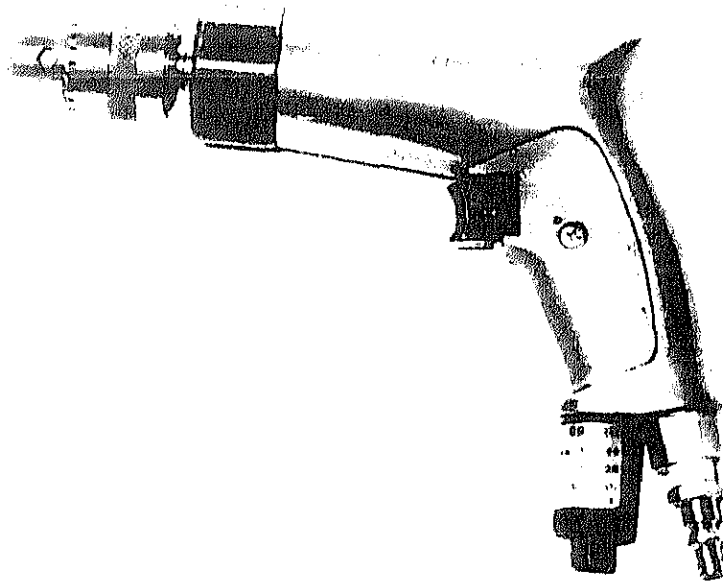
Item No.	33
Name	Battery Tester
Type	EM-77



CONSTRUCTION PROJECT OF AUTOMOBILE REPAIR & MAINTENANCE WORKSHOP IN BANGLADESH	DATE
	SCALE
TITLE OF DRAWING	DRG. NO. —
JAPAN INTERNATIONAL COOPERATION AGENCY	

--- 2-2 ---

Item No.	34
Name	Air Drill
Type	AD-100A



CONSTRUCTION PROJECT OF AUTOMOBILE REPAIR & MAINTENANCE WORKSHOP IN BANGLADESH	DATE
	SCALE
TITLE OF DRAWING	DRG. NO. —
JAPAN INTERNATIONAL COOPERATION AGENCY	

--- 2-2 ---

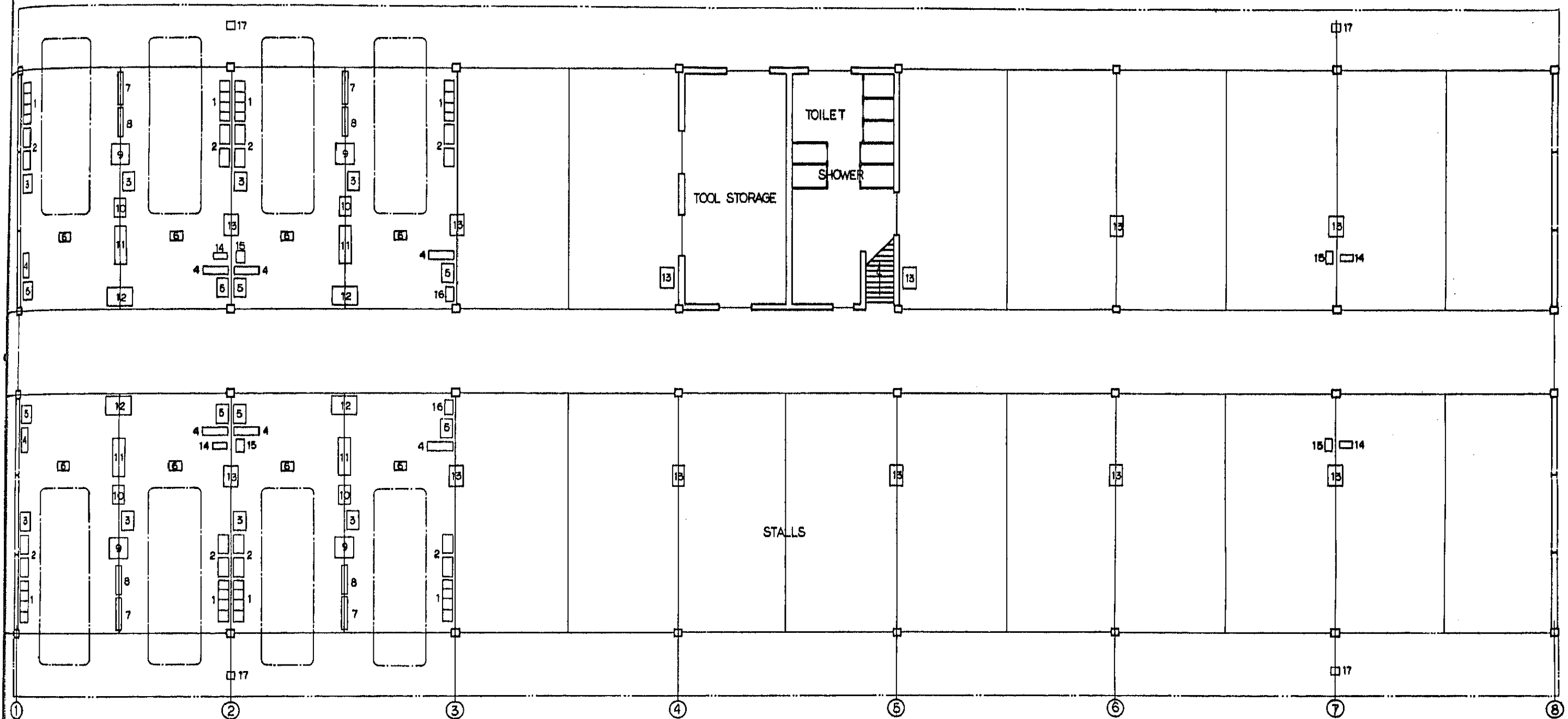
Item No. 49

Name Double Sledge Hammer

Type DSH-6



CONSTRUCTION PROJECT OF AUTOMOBILE REPAIR & MAINTENANCE WORKSHOP IN BANGLADESH	DATE
	SCALE
TITLE OF DRAWING	ORG. NO. --
JAPAN INTERNATIONAL COOPERATION AGENCY	



No.	DESCRIPTION	No.	DESCRIPTION
1	RIGID RACK	10	GREACER
2	SERVICE CREEPER	11	WORKING BENCH
3	DRAIN CART	12	WRITING TABLE
4	TRANSMISSION JACK	13	PARTS WASHING STAND
5	HAND TRUCK	14	DRILLING MACHINE
6	TOOL STAND	15	GENERAL GRINDER
7	JACK	16	GAS WELDER
8	JACK	17	AIR METER
9	WHEEL DOLLY		

CONSTRUCTION PROJECT OF AUTOMOBILE REPAIR & MAINTENANCE WORKSHOP IN BANGLADESH	DATE SCALE
TITLE OF DRAWING LAYOUT OF PERIODICAL REPAIR FACTORY	DRG. NO G-102
JAPAN INTERNATIONAL COOPERATION AGENCY	

CHAPTER 3, TOOLS & MACHINERIES TO BE USED IN PHASE 3

3-1) Paint and Body Factory

3-1-1) Group Wood/Body Shop

Item No.		Qty
1)	Single Side Surface Planer	1
	Capacity : 450 x 250mm	
	Manual type	
	Feed : 8 - 12m/min.	
	Motor : 2.2KW, 3 phase	
	Type PB-3	
2)	Hand Wood Planer	2
	Capacity : 136mm	
	Type L-450	
3)	Band Saw	1
	Saw wheel dia. : 700mm	
	Blade size : 76 x 4,750mm	
	Table size : 600(W) x 700(L)mm	
	Table tilting angle : 45° to right	
	Thickness : 300mm	
	Power : 2.2KW, 3 phase	
	Type JB-S70	
4)	Circular Saw	2
	Circular saw dia. : 405mm	
	Spindle speed : 2,600 - 4,000 r.p.m.	
	Table size : 650 x 805mm	
	Cross cut : 560mm	
	Motor : 1.5KW, 3 phase	
	with sliding table	
	Type SEC-16	

No.		Qty
	Sewing Machine	3
	High speed two needle type for heavy and medium type materials with stand Type STW-28	
	Air Drill	5
	Capacity : 10mm Revolution : 1,400 r.p.m. Air pressure required : 6kg/cm ² with hose 10m and coupler Type AD-100A Refer to 2-2-1, Item No.34	
	Air Driver	5
	Capacity : 6.0 x 8.0mm Bit square drive : 6.35mm Air pressure required : 6kg/cm ² with hose 10m and coupler Type GT-P6MD	
	Pipe Bender	1
	Capacity : 53mm radius Bending angle : 180° Type D-443	
	Arc Welder	3
	Rated current : 300A Current adjustable : 300 - 50A Electrode : 6 - 2.6mm Primary input : 25 KVA Power : 200V or more with accessories Type MA-300E	

Qty	Item No.	Qty
3	10) Gas Welder Set Consist of oxy and acetylene Regulator, gas welding torch, gas cutting torch, hoses, cylinder truck, etc. Type GS-10 Refer to 2-2, Item No.10	6
5	11) Body Fender Tool Set Consist of pads, hammers, spoon, etc. Type TF-50A	5
5	12) Hydraulic Garage Jack Capacity : 5 ton Saddle height : 150 - 560mm Type M-500M Refer to 1-1-3, Item No.2	5
1	13) Power Pack Capacity : 4 ton Consist of pump, ram, clamp, extension tube, etc. Type 404HRL	5
3	14) Air Drill Capacity : 10mm Revolution : 2,800 r.p.m. Air pressure required : 6kg/cm ² with hose 10m and coupler Type 211A Refer to 1-1-1, Item No.6	5
	15) Hole Saw Size : 18 - 53, 6 pcs./set Type 1853 HS	1

No.	Qty
Work Bench	5
Size : 1,780(W) x 600(D) x 750(H)mm with two drawers UV-150 Vice are equipped Type T-1000 Refer to 1-1-1, Item No.2	
Flexible File Holder & Blade	5
Blade length : 350mm, rough, and smooth Type 350R/350F/No.9	
Set of Needle File Set	5
Length : 150mm, medium Flat, half-round, round square, triangle Type F-150S	
Bench Grinder	3
Wheel size : 205 x 19 x 15.88mm Motor : 400W, 3 phase with stand Type SGK-T/PFK Refer to 1-1-9, Item No.23	
Cast Iron Anvil	5
Weight : 50kg Type AN-50	
C Clamp	5
Opening : 100mm Type CV-100	
C Clamp	5
Opening : 125mm Type CV-125	

Qty	Item No.		Qty
5	23)	C Clamp Opening : 150mm Type CV-150	5
	24)	C Clamp Opening : 200mm Type CV-200	5
5	25)	Hydraulic Press Capacity : 35 ton Ram stroke : 140mm Distance between frames: 675mm Distance between tables: 185mm Vertical travel of tables: 720mm with two correcting block Type HP-50E	1
3		Refer to 1-1-9, Item No.33	
	26)	Surface Plate Size : 1,200 x 2,400mm Type SPC-14	5
5	27)	Disc Grinder 4" rubber pad Air pressure required : 6.3kg/cm ² Free speed : 1,200 r.p.m. Type NSG-100	5
5	28)	Swage Block Weight : 95kg Type ISB-95	5

Item No.

9) Air Impact Wrench

Qty

5

Bolt capacity : 14mm

Square drive : 12.7mm

Air pressure required : 6kg/cm²

with hose 10m, coupler and sockets for Mitsubishi and
Isuzu

Type AW-1200

Refer to 1-1-5, Item No.10

0) Frame Straightness

1

Application : Small vehicle, Buses & Trucks

Overall length : 15,380mm

Overall width : 2,420mm

Master rack length : 12,000mm

Type FS-301

1) Impact Driver

6

With (-) bit and (+) bit, each 3 pcs.

Dimension : 145 x 55 x 30mm

Type #2600

Refer to 1-1-3, Item No.41

2) Double Sledge Hammer

6

Weight : 5.4kg

Type DSH-12

3) Tin Shear

3

Length : 360mm

Type 360SS

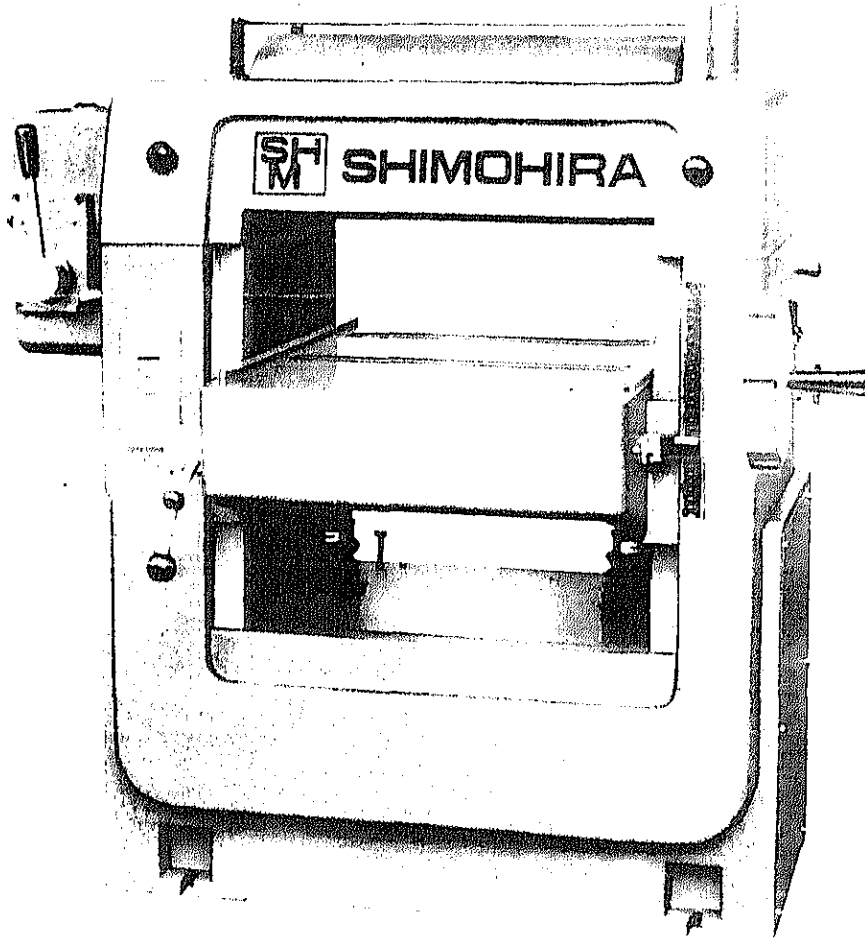
Qty	Item No.		Qty
5	34)	Tin Shear	3
		Length : 360mm	
		Straight edge	
		Type 360ST	
	35)	Roll Cutter	2
		Cutting capacity : 2.3mm, mild steel	
		1.2mm, stainless	
		1.0mm, leather	
1		Type RC-5	
	36)	Mechanic Tool Set	28
		Consist of : open end wrench	
		6 x 7, 8 x 9, 10 x 12, 11 x 13, 12 x 14,	
		14 x 17, 19 x 21mm each 1 pc.	
		box wrench	
6		8 x 9, 10 x 12, 11 x 13, 12 x 14, 14 x 17,	
		17 x 19, 19 x 21, 22 x 24mm each 1 pc.	
		flare nut wrench: 10 x 11, 12 x 14mm each 1 pc.	
		socket wrench for 9.5mm	
		8, 9, 10, 11, 12, 13, 14, 17, 19, 21, 22,	
		23, 24mm each 1 pc.	
6		ratchet handle, nut spinner handle, sliding	
		T handle, extension wrench 250mm, plier 200,	
		150mm, nipper 150mm, hammer 450g	
		- driver 75, 100, 150, 200mm	
3		+ driver 75, 100, 150mm: stubby driver -, +	
		integral handle driver 280mm, thickness	
		gauge, plug gap gauge, flat chisel, center	
		punch, needle file set, point file with case	
		Type CU-305	
		Refer to 1-1-1, Item No.12	

3-1-1

Item No. 1

Name Single Side Surface Planer

Type PB-3



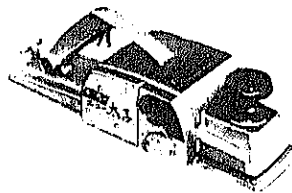
CONSTRUCTION PROJECT OF AUTOMOBILE REPAIR & MAINTENANCE WORKSHOP IN BANGLADESH	DATE
	SCALE
TITLE OF DRAWING	ORG. NO. —
JAPAN INTERNATIONAL COOPERATION AGENCY	

3-1-1

Item No. 2

Name Hand Wood Planer

Type L-450



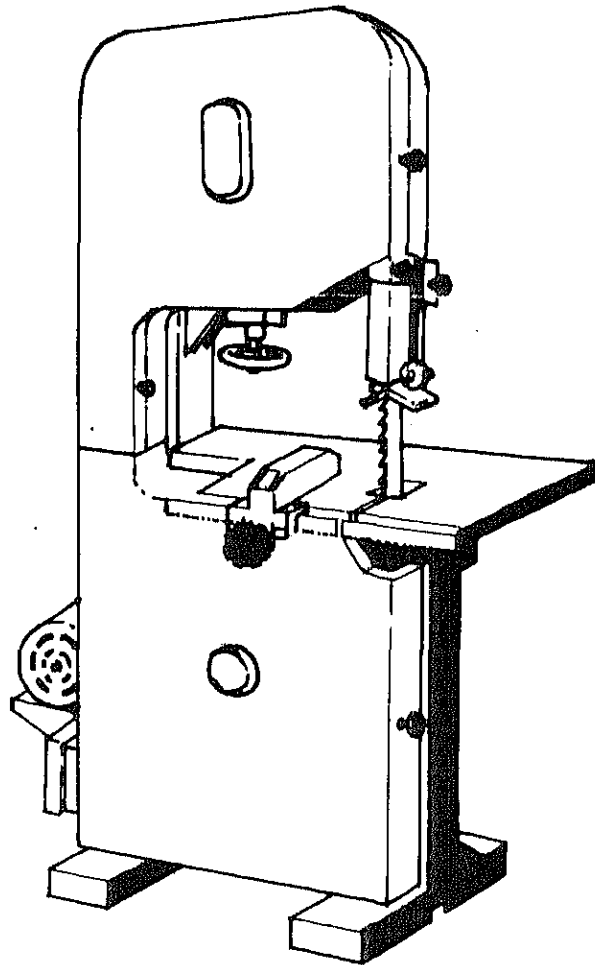
CONSTRUCTION PROJECT OF		DATE
AUTOMOBILE REPAIR & MAINTENANCE WORKSHOP IN BANGLADESH		SCALE
TITLE OF DRAWING		ORG NO. —
JAPAN INTERNATIONAL COOPERATION AGENCY		

3-1-1

Item No. 3

Name Band Saw

Type JB-S70



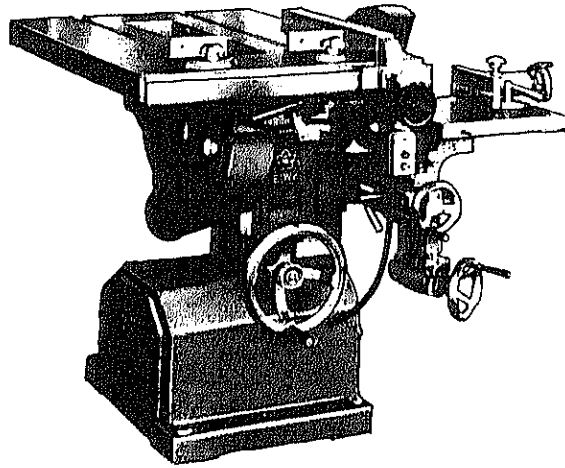
CONSTRUCTION PROJECT OF AUTOMOBILE REPAIR & MAINTENANCE WORKSHOP IN BANGLADESH	DATE
	SCALE
TITLE OF DRAWING	ORG. NO. —
JAPAN INTERNATIONAL COOPERATION AGENCY	

3-1-1

Item No. 4

Name circular Saw

Type SEC-16



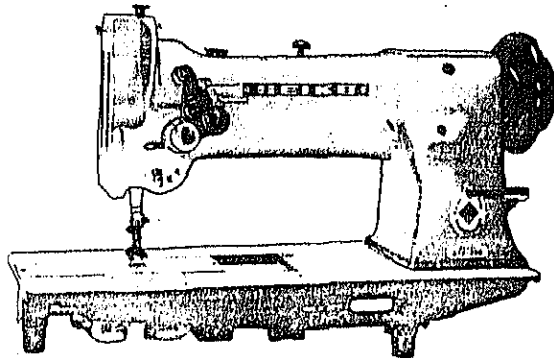
CONSTRUCTION PROJECT OF		DATE
AUTOMOBILE REPAIR & MAINTENANCE WORKSHOP IN BANGLADESH		SCALE
TITLE OF DRAWING		DRG NO.
		—
JAPAN INTERNATIONAL COOPERATION AGENCY		

3-1-1

Item No. 5

Name Sewing Machine

Type STW-28



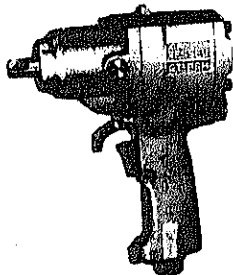
CONSTRUCTION PROJECT OF AUTOMOBILE REPAIR & MAINTENANCE WORKSHOP IN BANGLADESH	DATE
	SCALE
TITLE OF DRAWING	ORG. NO. —
JAPAN INTERNATIONAL COOPERATION AGENCY	

3-1-1

Item No. 7

Name Air Driver

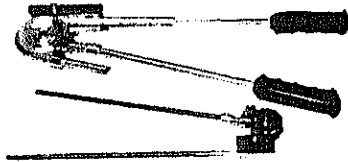
Type GT-P6MD



CONSTRUCTION PROJECT OF	DATE
AUTOMOBILE REPAIR & MAINTENANCE WORKSHOP IN BANGLADESH	SCALE
TITLE OF DRAWING	ORG. NO. —
JAPAN INTERNATIONAL COOPERATION AGENCY	

3-1-1

Item No.	8
Name	Pipe Bender
Type	D-443



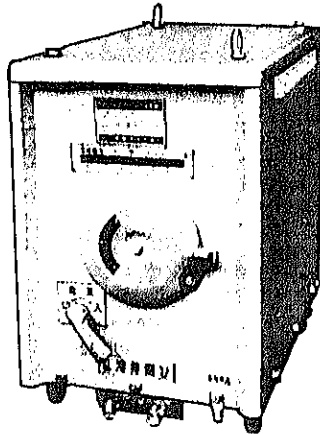
CONSTRUCTION PROJECT OF AUTOMOBILE REPAIR & MAINTENANCE WORKSHOP IN BANGLADESH	DATE
	SCALE
TITLE OF DRAWING	DRG. NO. —
JAPAN INTERNATIONAL COOPERATION AGENCY	

3-1-1

Item No. 9

Name Arc Welder

Type MA-300E



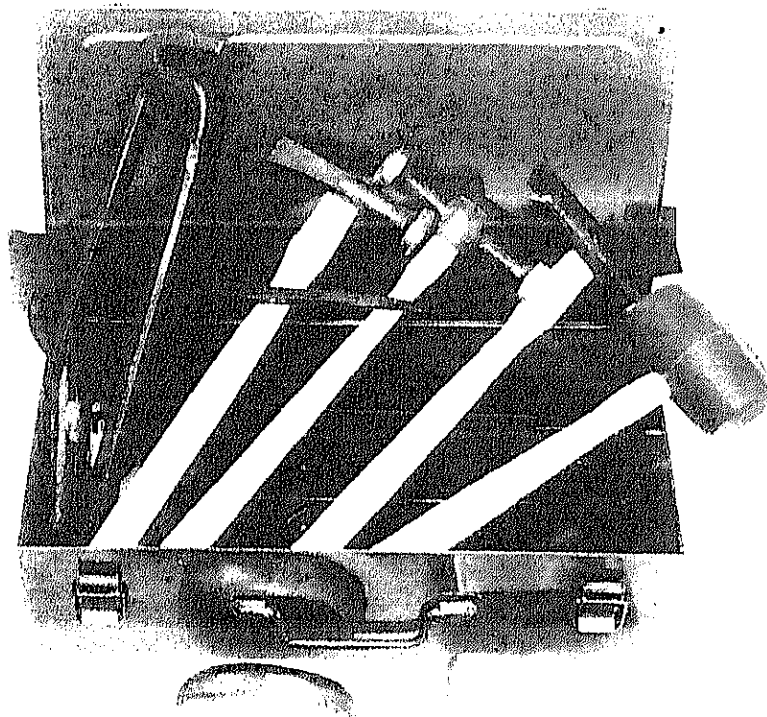
CONSTRUCTION PROJECT OF AUTOMOBILE REPAIR & MAINTENANCE WORKSHOP IN BANGLADESH	DATE
	SCALE
TITLE OF DRAWING	ORG NO. —
JAPAN INTERNATIONAL COOPERATION AGENCY	

3-1-1

Item No. 11

Name Body Fender Tool Set

Type TF-50A



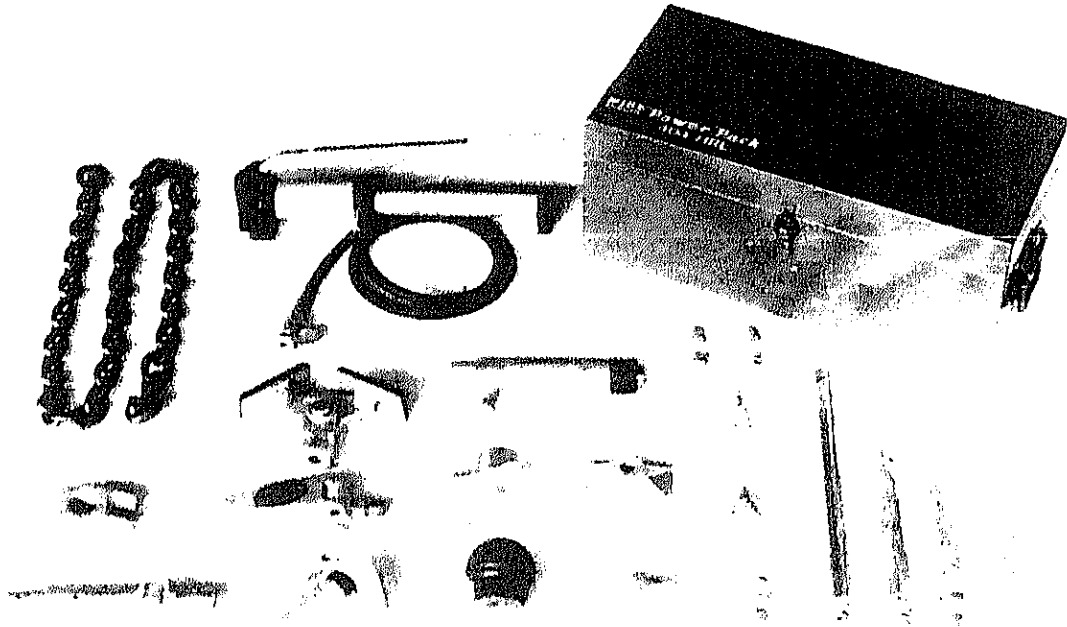
CONSTRUCTION PROJECT OF		DATE
AUTOMOBILE REPAIR & MAINTENANCE WORKSHOP IN BANGLADESH		SCALE
TITLE OF DRAWING		DRG. NO. —
JAPAN INTERNATIONAL COOPERATION AGENCY		

3-1-1

Item No. 13

Name Power Pack

Type 404HRL



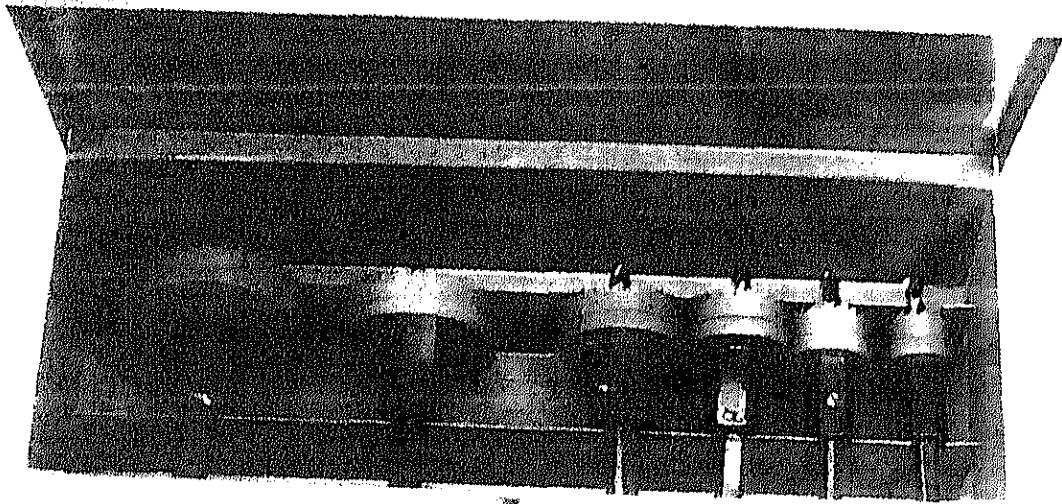
CONSTRUCTION PROJECT OF AUTOMOBILE REPAIR & MAINTENANCE WORKSHOP IN BANGLADESH	DATE
	SCALE
TITLE OF DRAWING	DRG. NO. —
JAPAN INTERNATIONAL COOPERATION AGENCY	

---3-1-1---

Item No. 15

Name Hole Saw

Type 1853HS



CONSTRUCTION PROJECT OF		DATE
AUTOMOBILE REPAIR & MAINTENANCE WORKSHOP IN BANGLADESH		SCALE
TITLE OF DRAWING		ORG. NO.
		—
JAPAN INTERNATIONAL COOPERATION AGENCY		

3-1-1

Item No. 17
Name Flexible File Holder &
 Blade
Type 350R/350F/No.9



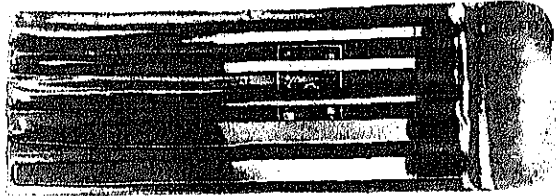
CONSTRUCTION PROJECT OF AUTOMOBILE REPAIR & MAINTENANCE WORKSHOP IN BANGLADESH	DATE
	SCALE
TITLE OF DRAWING	ORG. NO. —
JAPAN INTERNATIONAL COOPERATION AGENCY	

3-1-1

Item No. 18

Name Set of Needle File Set

Type F-150S



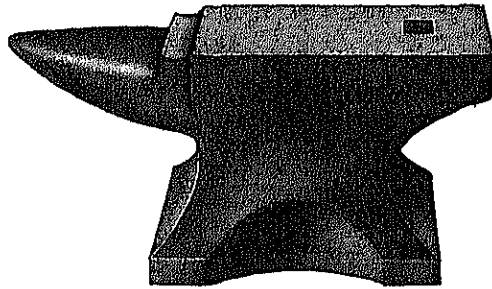
CONSTRUCTION PROJECT OF		DATE
AUTOMOBILE REPAIR & MAINTENANCE WORKSHOP IN BANGLADESH		SCALE
TITLE OF DRAWING		ORG. NO. —
JAPAN INTERNATIONAL COOPERATION AGENCY		

3-1-1

Item No. 20

Name Cast Iron Anvil

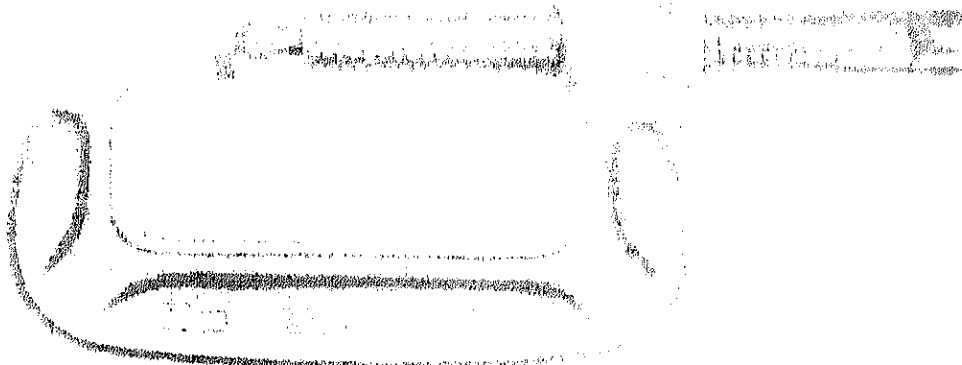
Type AN-50



CONSTRUCTION PROJECT OF		DATE
AUTOMOBILE REPAIR & MAINTENANCE WORKSHOP IN BANGLADESH		SCALE
TITLE OF DRAWING		ORG. NO.
JAPAN INTERNATIONAL COOPERATION AGENCY		—

3-1-1

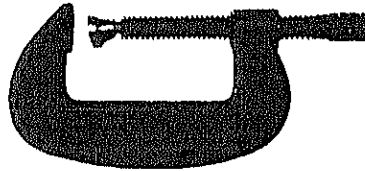
Item No.	21
Name	C Clamp
Type	CV-100



CONSTRUCTION PROJECT OF AUTOMOBILE REPAIR & MAINTENANCE WORKSHOP IN BANGLADESH	DATE
	SCALE
TITLE OF DRAWING	DRG. NO. —
JAPAN INTERNATIONAL COOPERATION AGENCY	

3-1-1

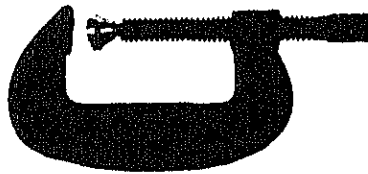
<u>Item No.</u>	<u>22</u>
<u>Name</u>	<u>C Clamp</u>
<u>Type</u>	<u>CV-125</u>



CONSTRUCTION PROJECT OF AUTOMOBILE REPAIR & MAINTENANCE WORKSHOP IN BANGLADESH	DATE
	SCALE
TITLE OF DRAWING	DRG. NO. —
JAPAN INTERNATIONAL COOPERATION AGENCY	

---3-1-1---

<u>Item No.</u>	<u>23</u>
<u>Name</u>	<u>C Clamp</u>
<u>Type</u>	<u>CV-150</u>



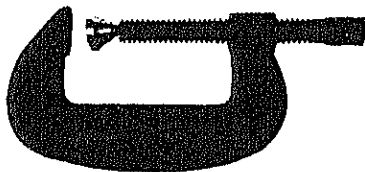
CONSTRUCTION PROJECT OF AUTOMOBILE REPAIR & MAINTENANCE WORKSHOP IN BANGLADESH	DATE
	SCALE
TITLE OF DRAWING	ORG. NO. —
JAPAN INTERNATIONAL COOPERATION AGENCY	

3-1-1

Item No. 24

Name C Clamp

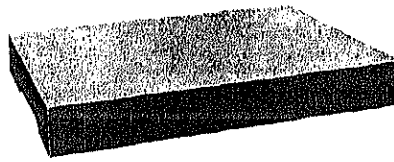
Type CV-200



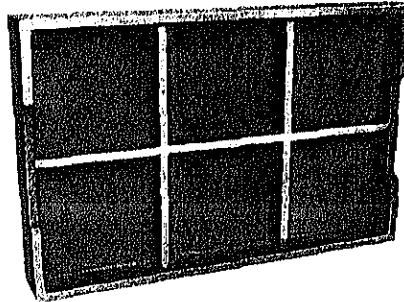
CONSTRUCTION PROJECT OF AUTOMOBILE REPAIR & MAINTENANCE WORKSHOP IN BANGLADESH	DATE
	SCALE
TITLE OF DRAWING	DRG. NO. —
JAPAN INTERNATIONAL COOPERATION AGENCY	

3-1-1

<u>Item No.</u>	<u>26</u>
<u>Name</u>	<u>Surfacr Plate</u>
<u>Type</u>	<u>SPC-14</u>



for Sheet Metal Job



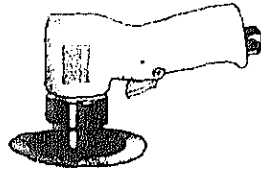
CONSTRUCTION PROJECT OF AUTOMOBILE REPAIR & MAINTENANCE WORKSHOP IN BANGLADESH	DATE
	SCALE
TITLE OF DRAWING	ORG. NO. —
JAPAN INTERNATIONAL COOPERATION AGENCY	

3-1-1

Item No. 27

Name Disc Grinder

Type NSG-100



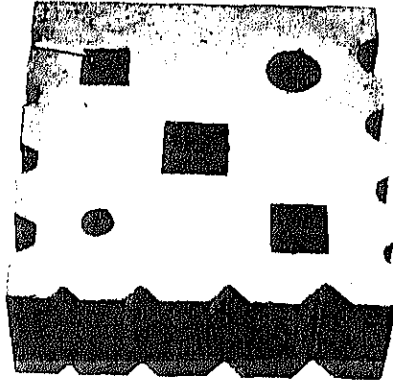
CONSTRUCTION PROJECT OF		DATE
AUTOMOBILE REPAIR & MAINTENANCE WORKSHOP IN BANGLADESH		SCALE
TITLE OF DRAWING		ORG. NO.
		—
JAPAN INTERNATIONAL COOPERATION AGENCY		

3-1-1

Item No. 28

Name Swage Block

Type ISB-95



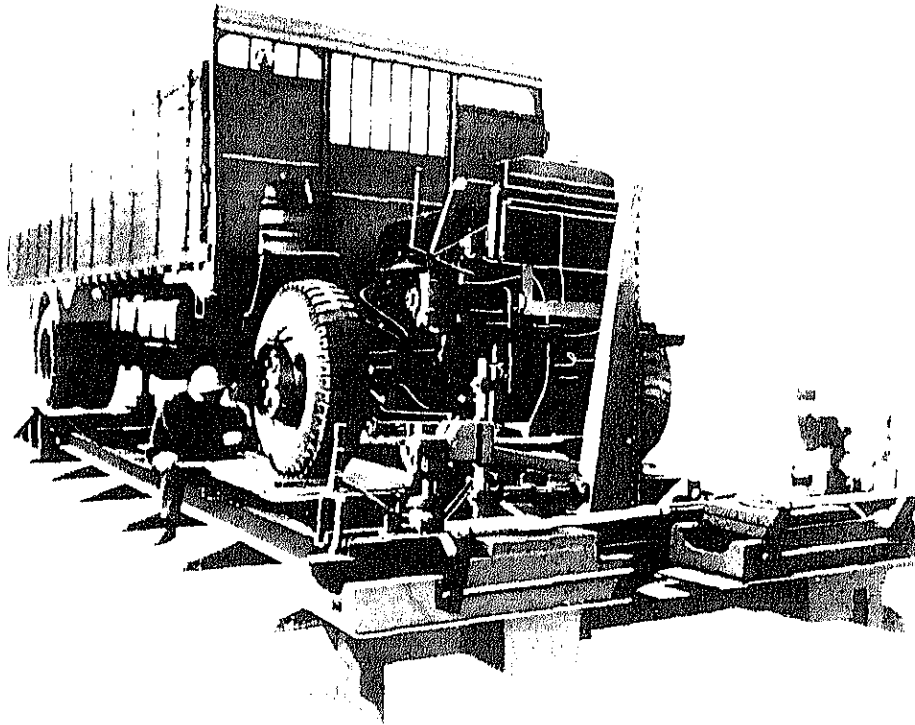
CONSTRUCTION PROJECT OF		DATE
AUTOMOBILE REPAIR & MAINTENANCE WORKSHOP IN BANGLADESH		SCALE
TITLE OF DRAWING		ORG. NO.
JAPAN INTERNATIONAL COOPERATION AGENCY		—

3-1-1

Item No. 30

Name Frame Straightner

Type FS-301



CONSTRUCTION PROJECT OF	DATE
AUTOMOBILE REPAIR & MAINTENANCE WORKSHOP IN BANGLADESH	SCALE
TITLE OF DRAWING	ORG. NO.
JAPAN INTERNATIONAL COOPERATION AGENCY	

3-1-1

Item No. 32

Name Double Sledge Hammer

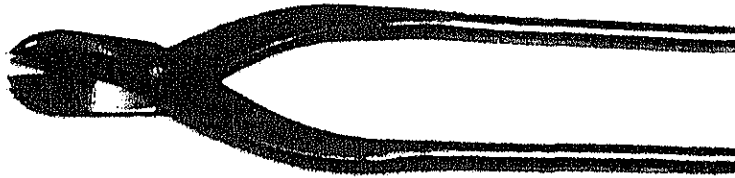
Type DSH-12



CONSTRUCTION PROJECT OF AUTOMOBILE REPAIR & MAINTENANCE WORKSHOP IN BANGLADESH	DATE
	SCALE
TITLE OF DRAWING	ORG. NO. —
JAPAN INTERNATIONAL COOPERATION AGENCY	

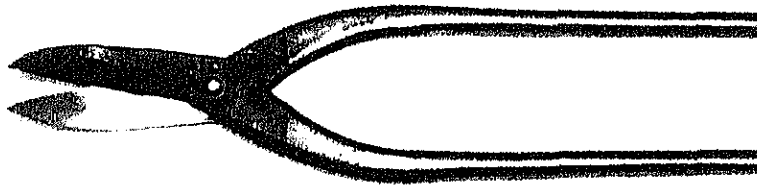
3-1-1

Item No.	33
Name	Tin Shear
Type	360SS



CONSTRUCTION PROJECT OF AUTOMOBILE REPAIR & MAINTENANCE WORKSHOP IN BANGLADESH	DATE
	SCALE
TITLE OF DRAWING	ORG. NO. —
JAPAN INTERNATIONAL COOPERATION AGENCY	

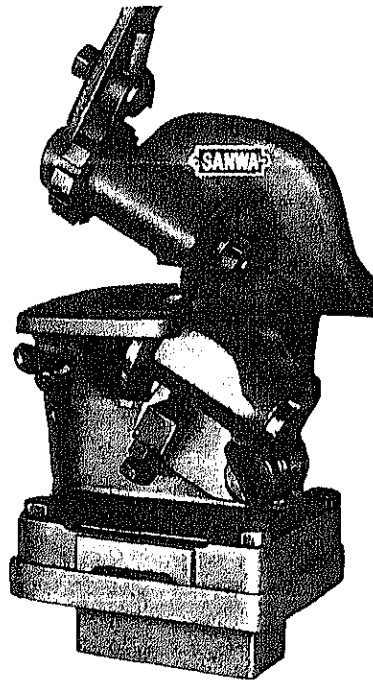
3-1-1
Item No. 34
Name Tin Shear
Type 360ST



CONSTRUCTION PROJECT OF AUTOMOBILE REPAIR & MAINTENANCE WORKSHOP IN BANGLADESH	DATE
	SCALE
TITLE OF DRAWING	ORG. NO.
	—
JAPAN INTERNATIONAL COOPERATION AGENCY	

3-1-1

Item No.	35
Name	Roll Cutter
Type	RC-5



CONSTRUCTION PROJECT OF AUTOMOBILE REPAIR & MAINTENANCE WORKSHOP IN BANGLADESH	DATE
	SCALE
TITLE OF DRAWING	ORG. NO. —
JAPAN INTERNATIONAL COOPERATION AGENCY	

3-1-2) Group Painting Shop

Item No.		Qty
1)	Infrared Ray Stand	6
	Bulb : 250W x 6 pieces	
	Power : 1.5KW, 3 phase	
	Type TRB-6E	
2)	Airless Spray Unit	6
	Air motor dia. : 160mm	
	Pump ratio : 30 : 1	
	Piston stroke : 98.5mm	
	Displacement : 5.2 lit./min.	
	Air pressure required : Max. 7kg/cm ²	
	Tank with caster wheel : 50 lit.	
	Type YSE160P30SP	
3)	Air regulator Set	8
	Pressure range : 0 - 15kg/cm ²	
	with oiler and cock	
	Type AR-303	
4)	Auto Lift	1
	Capacity : 4 + 4 ton	
	Lifting : 1,600mm	
	Air pressure required : 10kg/cm ² over	
	Type WSL-80	
	Drawing No.G-001	
	Refer to 1-1-5, Item No.6	
5)	Coater	2
	Air motor dia. : 65mm	
	Pump ratio : 20 : 1	
	Displacement : 0.8 lit./min.	

Item No.

Qty

Air pressure required : Max. 7kg/cm²

Tank : 18 lit.

Type YSE65P20

6) Hand Truck

6

Load : 300kg

Dimension : 900(L) x 600(W) x 850(H)mm

Type No.101

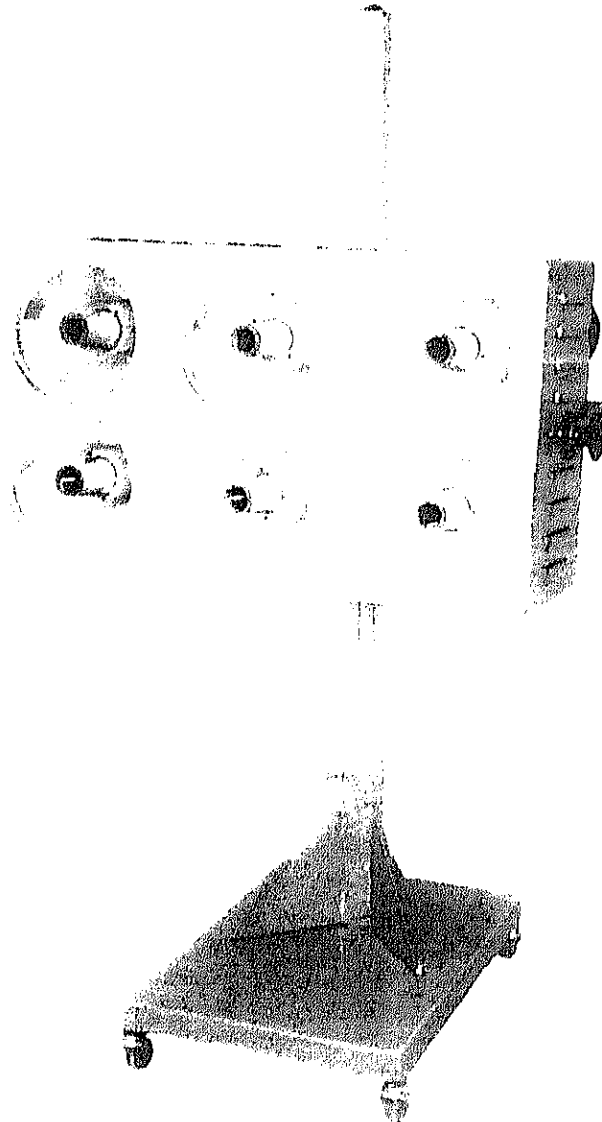
Refer to 1-1-1, Item No.5

3-1-2

Item No. 1

Name Infrared Ray Stand

Type TRB-6E



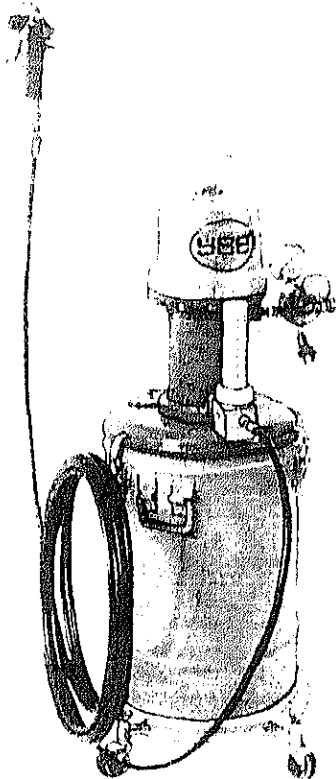
CONSTRUCTION PROJECT OF		DATE
AUTOMOBILE REPAIR & MAINTENANCE WORKSHOP IN BANGLADESH		SCALE
TITLE OF DRAWING		ORG. NO.
		-
JAPAN INTERNATIONAL COOPERATION AGENCY		

3-1-2

Item No. 2

Name Airless Spray Unit

Type YSE160P30SP



CONSTRUCTION PROJECT OF AUTOMOBILE REPAIR & MAINTENANCE WORKSHOP IN BANGLADESH	DATE
	SCALE
TITLE OF DRAWING	ORG. NO. —
JAPAN INTERNATIONAL COOPERATION AGENCY	

3-1-2

Item No. 3

Name Air Regulator Set

Type AR-303



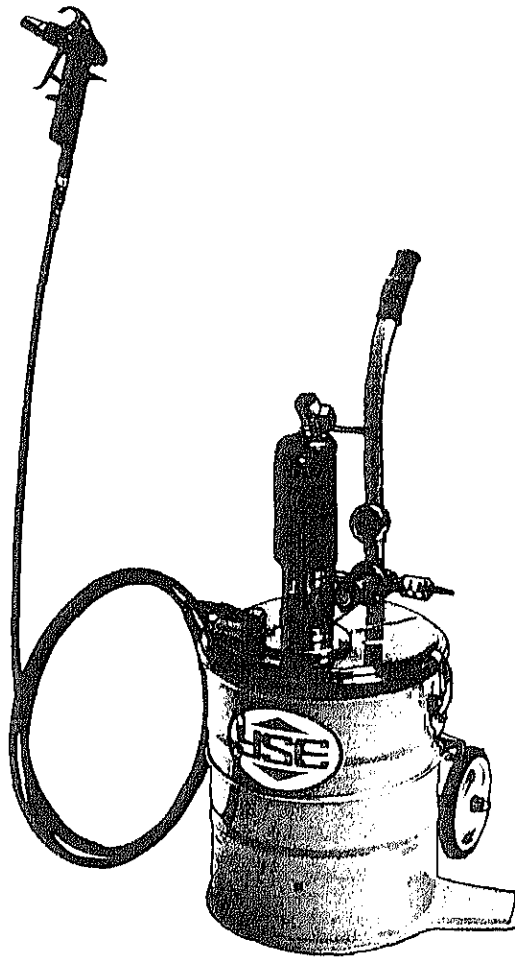
CONSTRUCTION PROJECT OF		DATE
AUTOMOBILE REPAIR & MAINTENANCE WORKSHOP IN BANGLADESH		SCALE
TITLE OF DRAWING		DRG. NO.
		—
JAPAN INTERNATIONAL COOPERATION AGENCY		

3-1-2

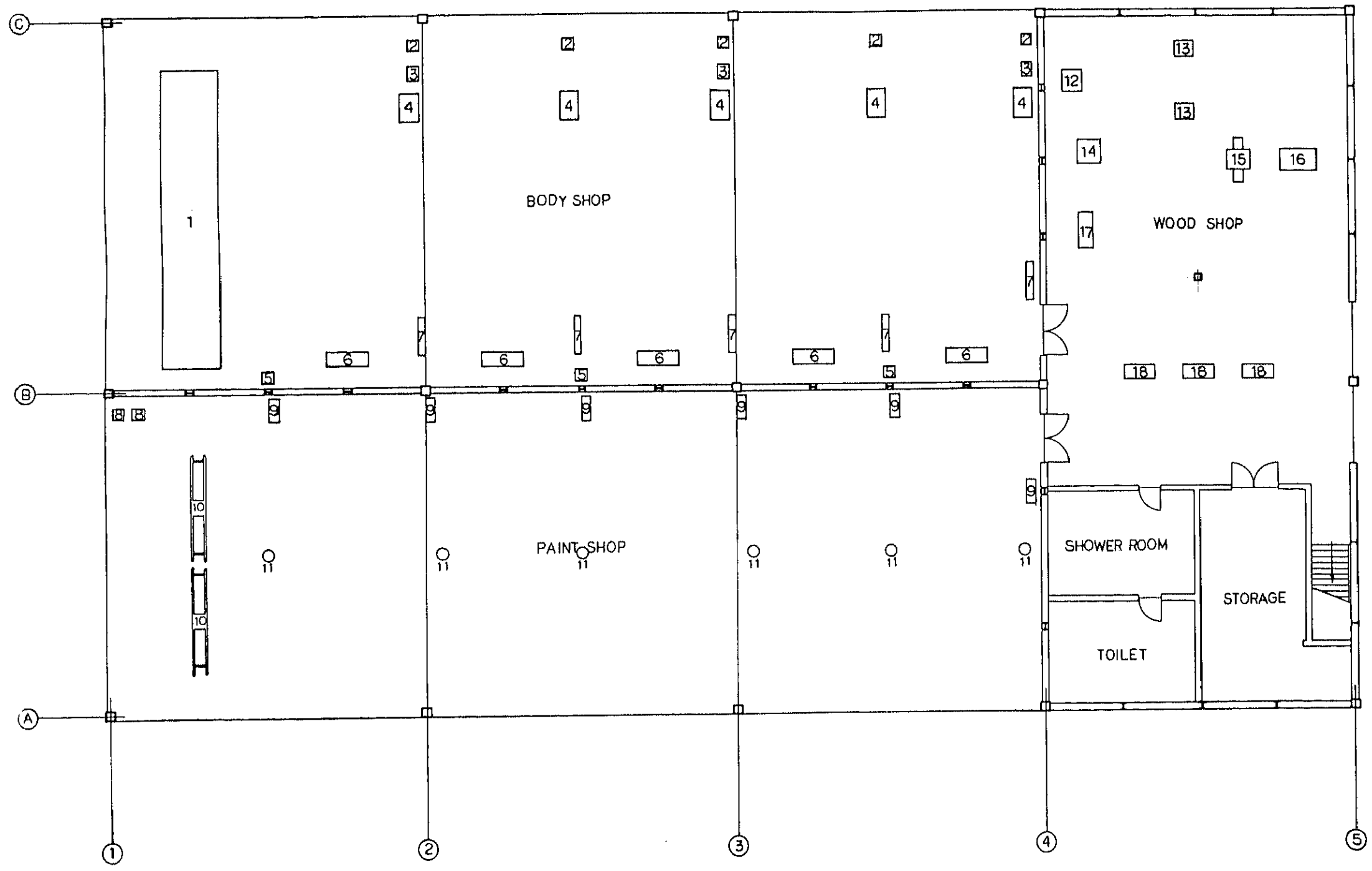
Item No. 5

Name Coater

Type YSE65P20



CONSTRUCTION PROJECT OF	DATE
AUTOMOBILE REPAIR & MAINTENANCE WORKSHOP IN BANGLADESH	SCALE
TITLE OF DRAWING	ORG. NO. -
JAPAN INTERNATIONAL COOPERATION AGENCY	



1	FRAME STRAIGHTENER
2	GAS WELDER
3	GENEAL GRINDER
4	SURFACE PLATE
5	ELECTRIC WELDER
6	WORK BENCH
7	JACK
8	COATER
9	INFRARED RAYS STAND
10	AUTO LIFT
11	AIRLESS SPRAY UNIT
12	HYDRAULIC PRESS
13	CIRCULAR SAW BENCH
14	PIPE BENDER
15	BENCH WOOD PLANNER
16	BAND SAW
17	SHEARING MACHINE
18	SEWING MACHINE

CONSTRUCTION PROJECT OF AUTOMOBILE REPAIR&MAINTENANCE WORKSHOP IN BANGLADESH		DATE
TITLE OF DRAWING LAYOUT OF BODY&PAINT FACTORY		SCALE
JAPAN INTERNATIONAL COOPERATION AGENCY		DRG.NO. G-104

JICA