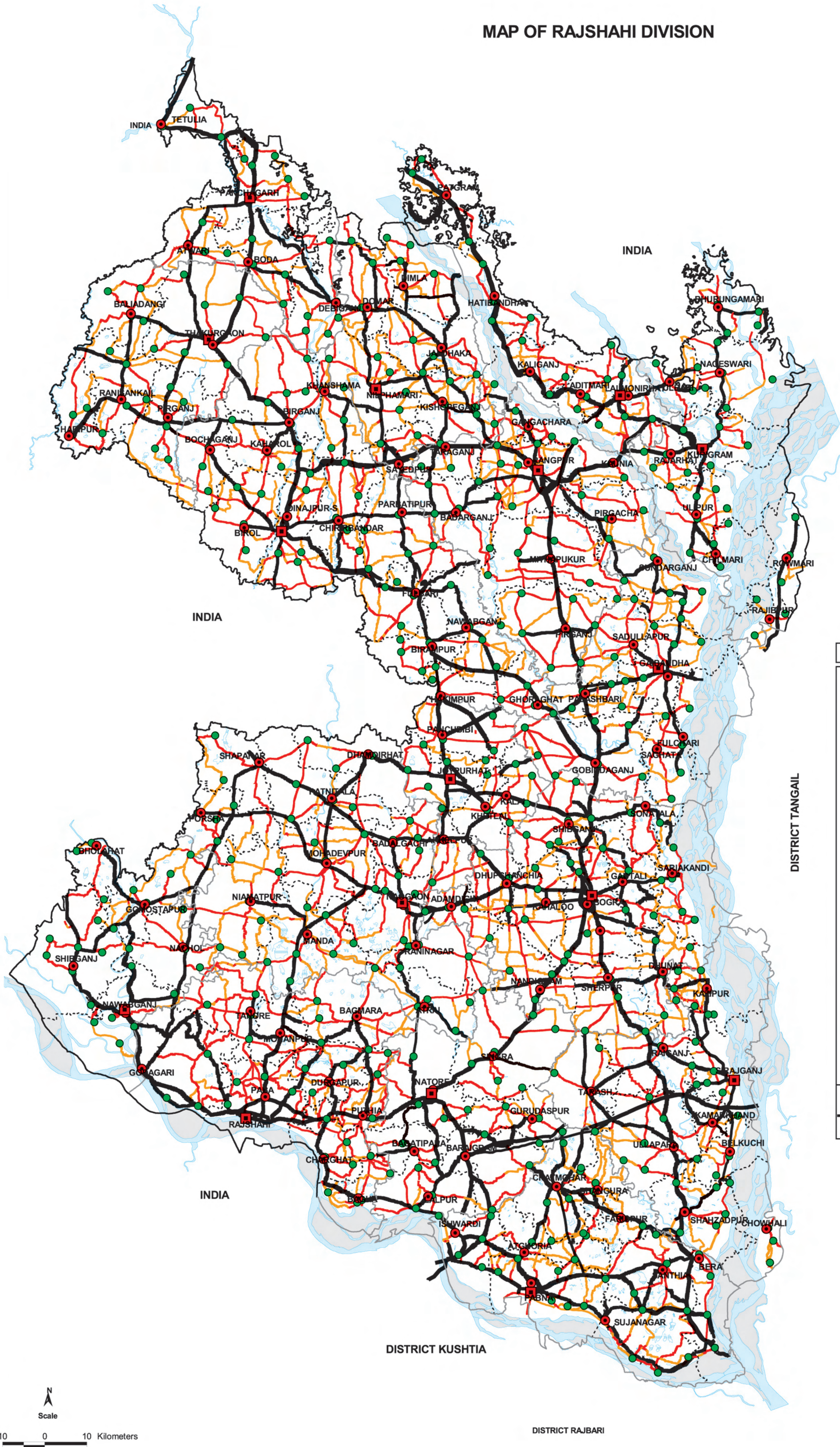


MAP OF RAJSHAHI DIVISION



LEGEND	
Administrative Boundary	
	International Boundary
	District Boundary
	Upazila Boundary
Administrative HQs	
	District HQ
	Upazila HQ
Physical Infrastructures	
	National Highways
	Regional Highways
	Feeder Road Type-A
	Upazila Road Pucca
	Upazila Road Katcha
	Railway (Meter Gauge)
Agricultural Features	
	Embankment
	Road Cum Embankment
Natural Features	
	Wide River
	Water Bodies
Socio-Economic Infrastructures	
	Growth Centre

Compiled from : SPOT Image 1989-90, Aerial Photograph 1983-84,
Topographic Maps, Thana Maps, B.B.S and Field Checking.
Projection : Lambert's Conformal Conic

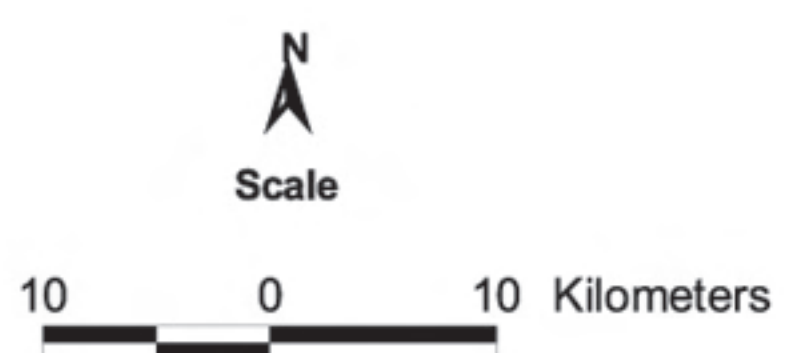
PREPARED BY : GIS UNIT
LOCAL GOVERNMENT ENGINEERING DEPARTMENT

DISTRICT JAMALPUR

DISTRICT TANGAIL

DISTRICT KUSHTIA

DISTRICT RAJBARI



**LOCAL GOVERNMENT ENGINEERING DEPARTMENT
DIVISION SUMMARY OF ROAD
DIVISION : RAJSHAHI**

ROAD TYPE	NUMBER OF ROAD	TOTAL LENGTH (Km)	SURFACE TYPE-WISE BREAK-UP (Km)				CONDITION OF BC & RIGID PVT. ROAD (As of December, 2003) (Km)				STRUCTURE		EXISTING GAP	
			EARTHEN	FLEXIBLE PAVEMENT (BC)	BRICK PAVEMENT (WBM/HBB/BFS)	RIGID PAVEMENT (CC/RCC)	GOOD	FAIR	POOR	BAD	NUMBER	SPAN (m)	NUMBER	SPAN (m)
Upazila Road	1283	10245	4222	5763	258	2	3126	1772	549	258	13417	59312	1069	18447
Union Road	2297	12503	9993	2291	217	2	1399	544	148	90	13480	42710	3022	24065
Village Road-A	7823	22900	21193	1436	270	1	927	316	70	47	12937	41224	5606	31606
Village Road-B	8965	16730	16401	216	113	0	161	35	15	4	6313	18912	3920	21963
TOTAL	20368	62378	51809	9706	858	5	5613	2668	782	399	46147	162158	13617	96081

