

### 3.6 FLOOD OPERATION

In accordance with the Government Regulation on River (No.35/1991), the government is obliged to prepare organization and guidelines on preparedness/fighting against flood danger including “Before”, “During” and “After”. Followings are explanation of flood operation based on manuals of the CILCIS and the DKI Jakarta.

#### 3.6.1 Organization for Flood Operation

For flood operation, the following organizations have been established in connection with the disaster management organizations which are stipulated in “President Decree No.3/2001 on National Coordination Agency for Disaster Countermeasures and Refugees Relief (Badan Koordinasi Nasional Penanggulangan Bencana dan Penanganan Pengungsi/BAKORNAS-PBP).

Table 3.19 Organization for Flood Operation

Level	Organization and Coordination for Disaster Management	
Central (Pusat)	<div style="border: 1px solid black; padding: 5px; text-align: center;">                     Disaster Countermeasures and Refugees Relief National Coordination Agency (BAKORNAS PBP)                 </div>	<div style="border: 1px solid black; padding: 5px; text-align: center;">                     PU                 </div> <div style="border: 1px solid black; padding: 5px; text-align: center;">                     Central Flood Operation Duty Unit (SATOGAS PB PUSAST) / Directorate General of CILCIS                 </div>
Province (Propinsi)	<div style="border: 1px solid black; padding: 5px; text-align: center;">                     Implementation Coordination Unit (SATKORLAK) /Governor                 </div>	<div style="border: 1px solid black; padding: 5px; text-align: center;">                     Provincial Flood Operation Duty Unit (SATGAS PBP Propinsi)/CILCIS                 </div>
Municipality/Regency (Kota/Kab)	<div style="border: 1px solid black; padding: 5px; text-align: center;">                     Implementation Unit (SATLAK)                 </div>	<div style="border: 1px solid black; padding: 5px; text-align: center;">                     Flood Operation Duty Unit (SATGAS PBP) / Sub-Project                 </div>
District (Kecamatan)	<div style="border: 1px solid black; padding: 5px; text-align: center;">                     Operation Unit (Unit Operational PBP)                 </div>	<div style="border: 1px solid black; padding: 5px; text-align: center;">                     Flood Operation Commander Unit (POSKO PBP)/Project                 </div>
Sub-district/Village (Desa)	<div style="border: 1px solid black; padding: 5px; text-align: center;">                     Community Unit (Satlinmas PBP)                 </div>	<div style="border: 1px solid black; padding: 5px; text-align: center;">                     Flood Operation Community Unit (POKOMAS PBP)/ Project Staff                 </div>

Note: ———> Command Line, - - - - Coordination Line

#### 3.6.2 Flood Operation in DKI Jakarta

Flood operation in DKI Jakarta is explained hereunder based on the two (2) Flood Operation Manuals for the year of 2004/2005 prepared by the CILCIS and the DKI

Jakarta.

(1) Flood Prone Areas

It is explained that “Large flooding such as the 1996 flood and the 2002 flood does not occur every year and thus, location of 78 flood prone areas (Figure 3.25), which may occur every year, are defined and indicated in the manual”.

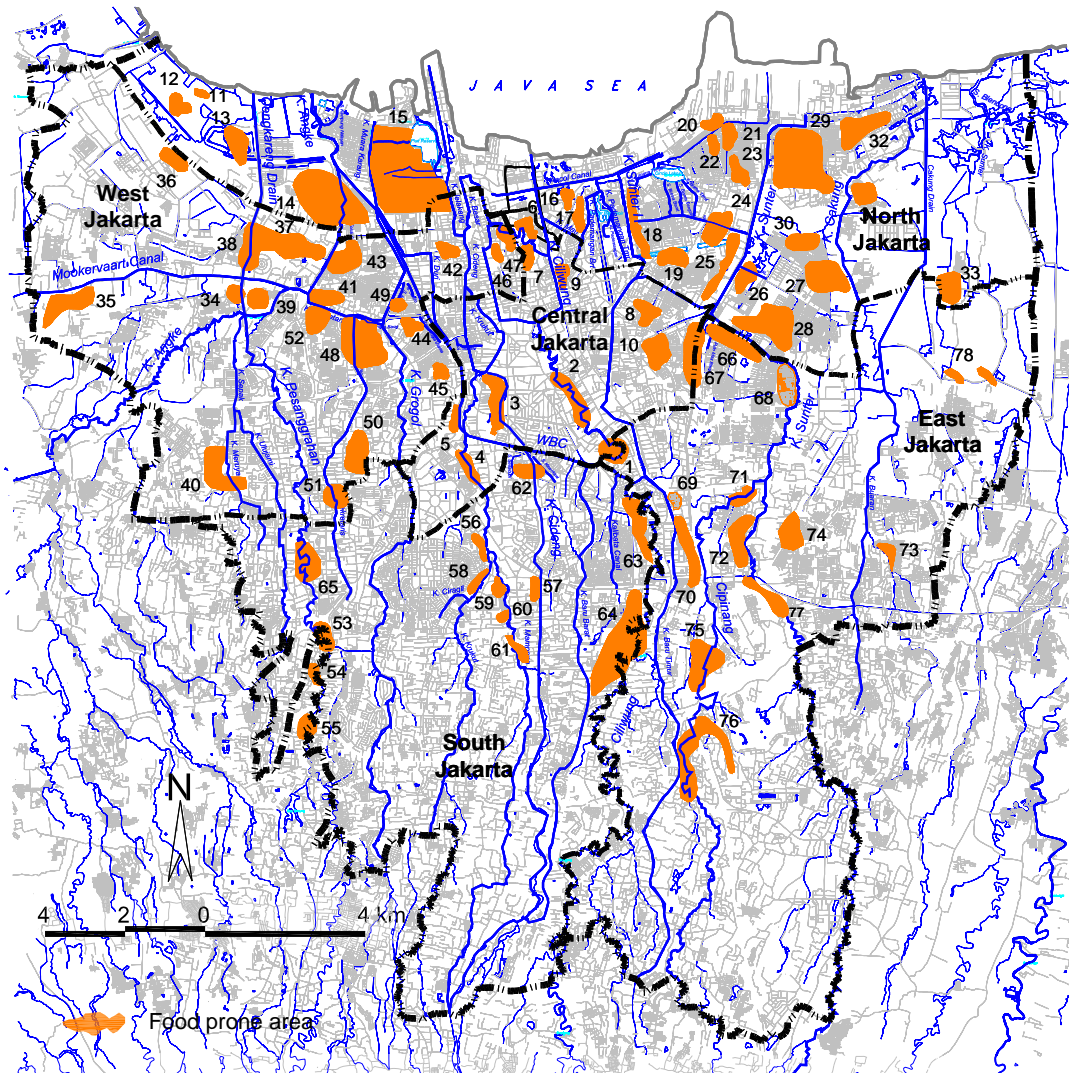


Figure 3.25 Flood Prone Areas for the year of 2004/2005 (DKI Jakarta)

(2) Flood Alert Water Levels

(a) Flood Monitoring Stations

During rainy season, water level is monitored at the 12 water level gauging stations (Flood Alert WL Gauging Stations) located at the rivers/drains in the DKI Jakarta and upper stream of these rives/drains as shown in Figure 3.26 to issue the four (4) levels of Flood Alerts to the related organizations