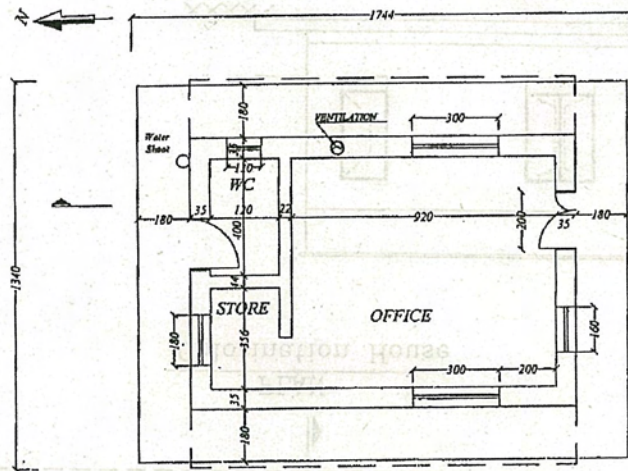
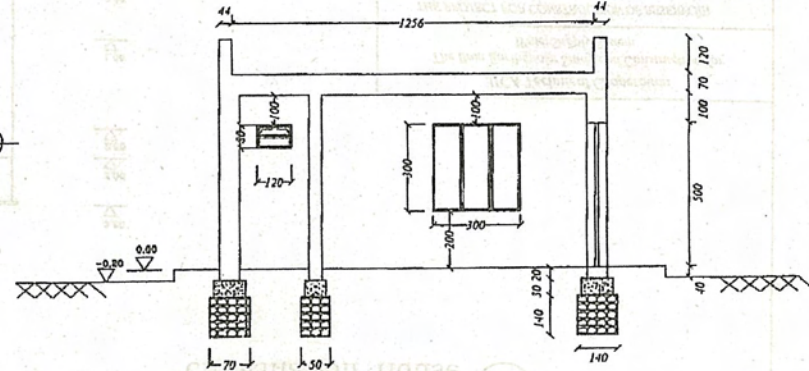


Plan
Drainage Route

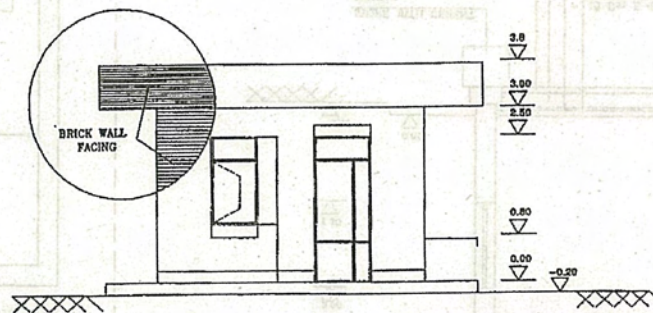
JICA Technical Cooperation		
The Bam Earthquake Study and Construction for Water Supply System		
THE PROJECT FOR CONSTRUCTION OF RESERVOIR		
Date: March, 2005	Title: Drainage Route Plan	Scale: 1/150
Client: PACIFIC CONSULTANTS INTERNATIONAL	Draw No. 1-16	
Contractor: SEIHAN SIZIRI OFFICE		
WATER AND SEWAGE COMPANY OF KENYA		



PLAN
Gate House

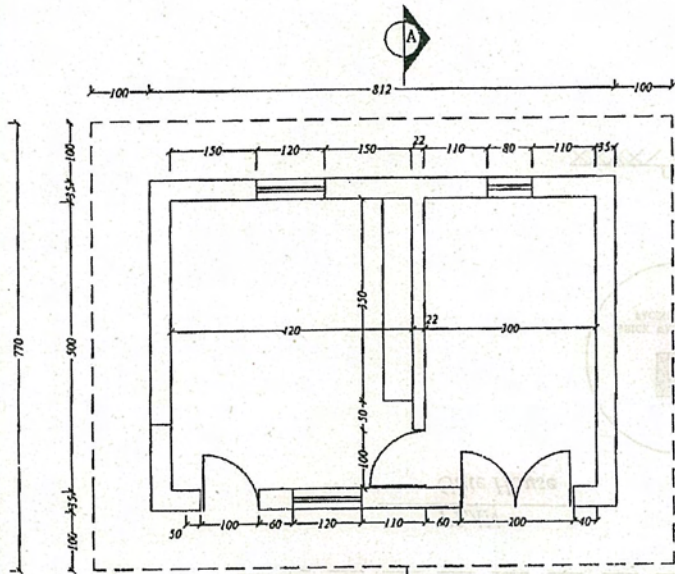


SECTION A
Gate House

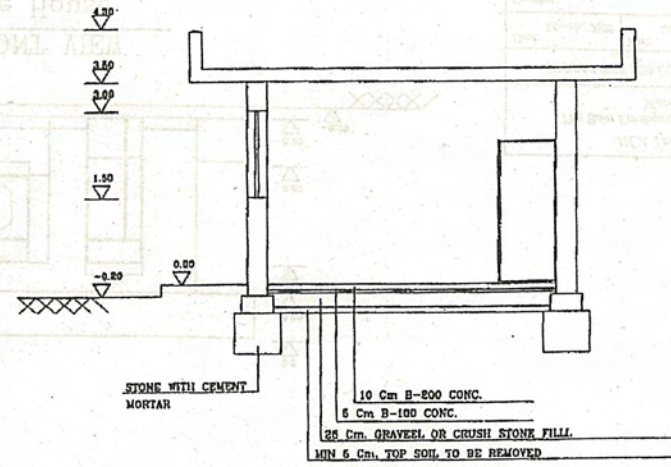


FRONT VIEW
Gate House

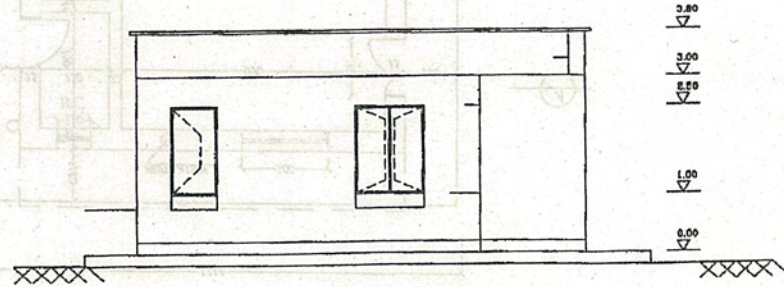
JICA Technical Cooperation The Bam Earthquake Study and Construction for Water Supply System		
THE PROJECT FOR CONSTRUCTION OF RESERVOIR		
Date: March, 2005	Title: Gate House	Scale: 1/150
Consultant: PACIFIC CONSULTANTS INTERNATIONAL	Draw No. II-1	
Contractor: HAILINSHI OOSTA		



PLAN
Chlorination House



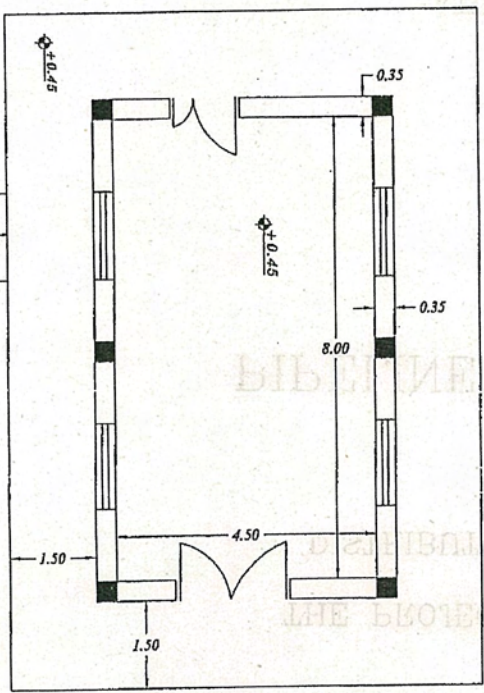
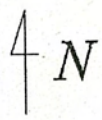
SECTION A-A
Chlorination House



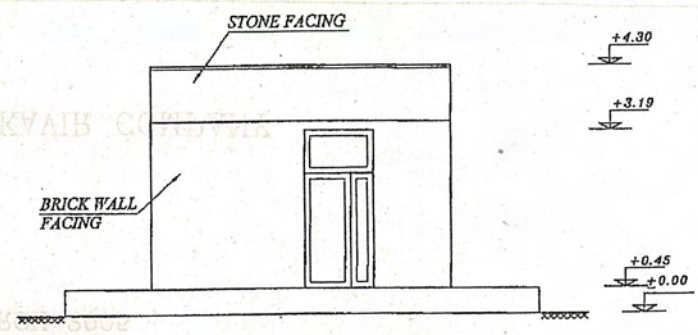
REAR VIEW
Chlorination House

10 Cm B-200 CONC.
6 Cm B-100 CONC.
25 Cm GRAVEL OR CRUSH STONE FILL
MIN 6 Cm. TOP SOIL TO BE REMOVED

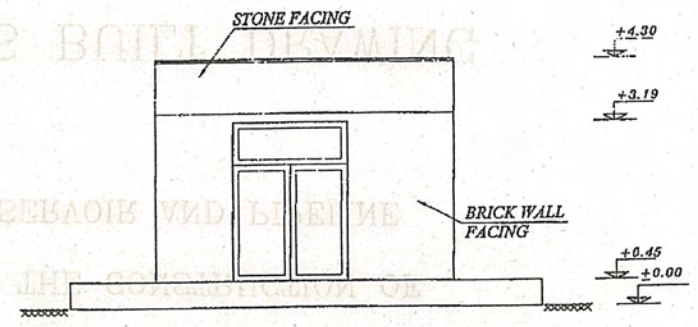
JICA Technical Cooperation The Bam Earthquake Study and Construction for Water Supply System		
THE PROJECT FOR CONSTRUCTION OF RESERVOIR		
Date: March, 2005	Title: Chlorination House	Scale: 1/150
Contractor: PACIFIC CONSULTANTS INTERNATIONAL	Draw No. 11-2	
Client: NEULON SAZEH CONSTRUCTION		



PLAN(NO.3 PUMPING HOUSE)



NORTH VIEW (NO.3 PUMPING HOUSE)



SOUTH VIEW (NO.3 PUMPING HOUSE)

JICA Technical Cooperation The Bam Earthquake Study and Construction for Water Supply System		
THE PROJECT FOR CONSTRUCTION OF RESERVOIR		
Date: March, 2005	Title: Pumping House	Scale: 1/150
Consultant: PACIFIC CONSULTANTS INTERNATIONAL		Draw No. JI-3
Coordinator: JULIAN ZAKEN OOSTER		