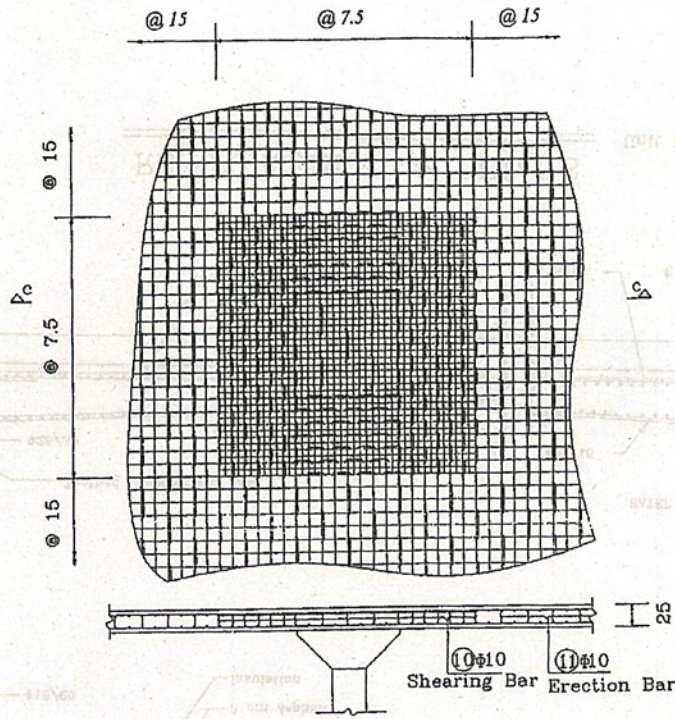


REINFORCEMENT & DETAILS

Unit Length :cm

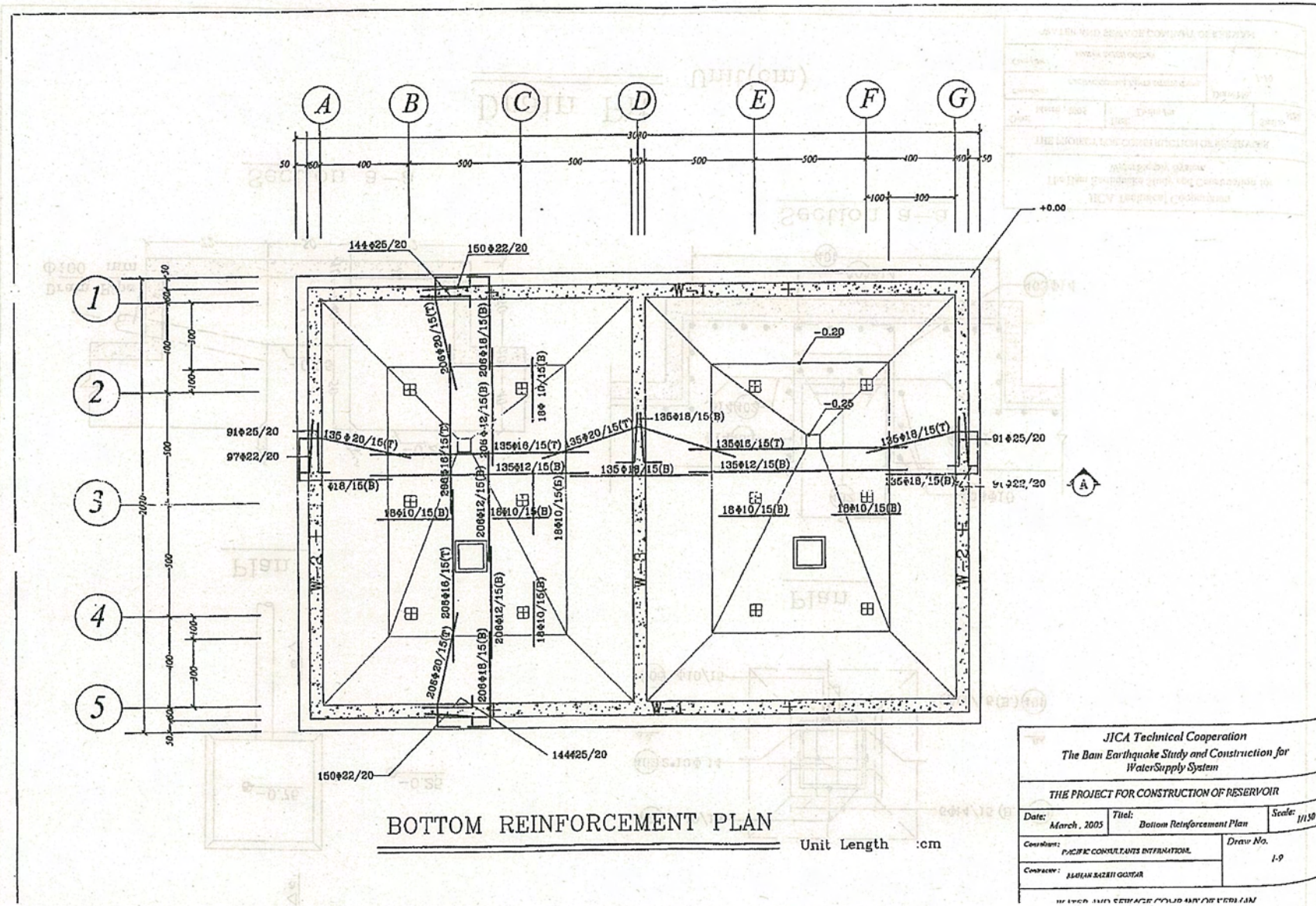
JICA Technical Cooperation The Bam Earthquake Study and Construction for Water Supply System		
THE PROJECT FOR CONSTRUCTION OF RESERVOIR		
Date: March, 2005	Title: Reinforcement Plan & Details	Scale: 1/150
Contractor: PACIFIC CONSULTANTS INTERNATIONAL	Draw No. 1.7	
Consultant: KEMPLAN & IZEN CONSULTANTS		



Section c-c Unit:cm

Top Slab Bar Arrangement at Column

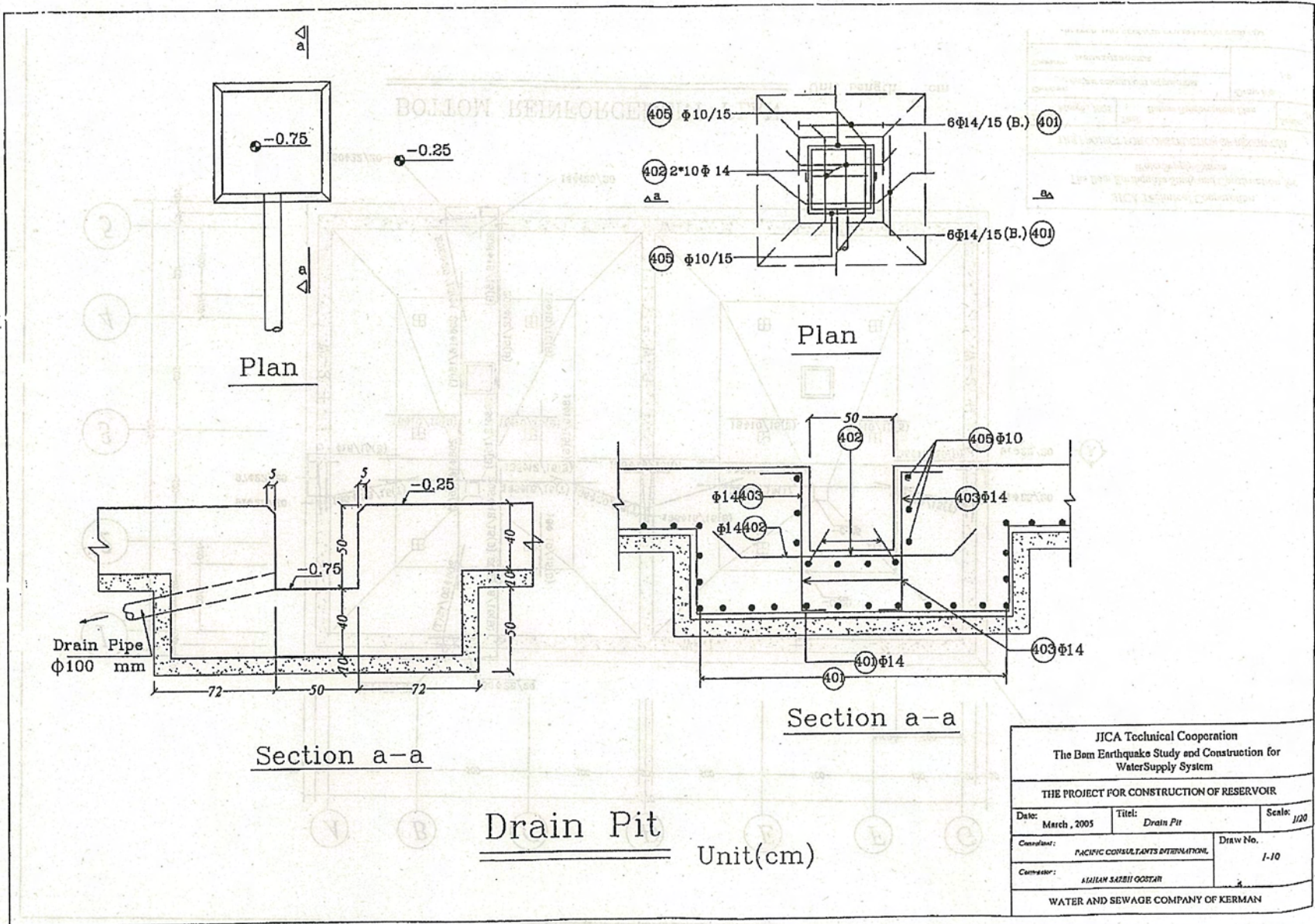
JICA Technical Cooperation The Bam Earthquake Study and Construction for Water Supply System		
THE PROJECT FOR CONSTRUCTION OF RESERVOIR		
Date:	Title:	Scale:
March, 2005	Top Slab Bar Arrangement	
Contractor:	Draw No.	
PACIFIC CONSULTANTS INTERNATIONAL	1-3	
Contractor:	WATER AND SEWERAGE COMPANY OF KERMAN	
ASLAN SAEEDI OOSTARI		



BOTTOM REINFORCEMENT PLAN

Unit Length :cm

JICA Technical Cooperation The Bam Earthquake Study and Construction for Water Supply System		
THE PROJECT FOR CONSTRUCTION OF RESERVOIR		
Date: March, 2005	Title: Bottom Reinforcement Plan	Scale: 1/150
Consultant: PACIFIC CONSULTANTS INTERNATIONAL	Draw No. I-9	
Contractor: ALJAHAR BAKRITI COMPANY		
IN THE YEAR 1428 AH (2007)		



Drain Pit
Unit(cm)

JICA Technical Cooperation		
The Bam Earthquake Study and Construction for Water Supply System		
THE PROJECT FOR CONSTRUCTION OF RESERVOIR		
Date: March, 2005	Title: Drain Pit	Scale: 1/20
Consultant: PACIFIC CONSULTANTS INTERNATIONAL	Draw No. 1-10	
Contractor: AZIZAN SAZBII GOSTAR		
WATER AND SEWAGE COMPANY OF KERMAN		