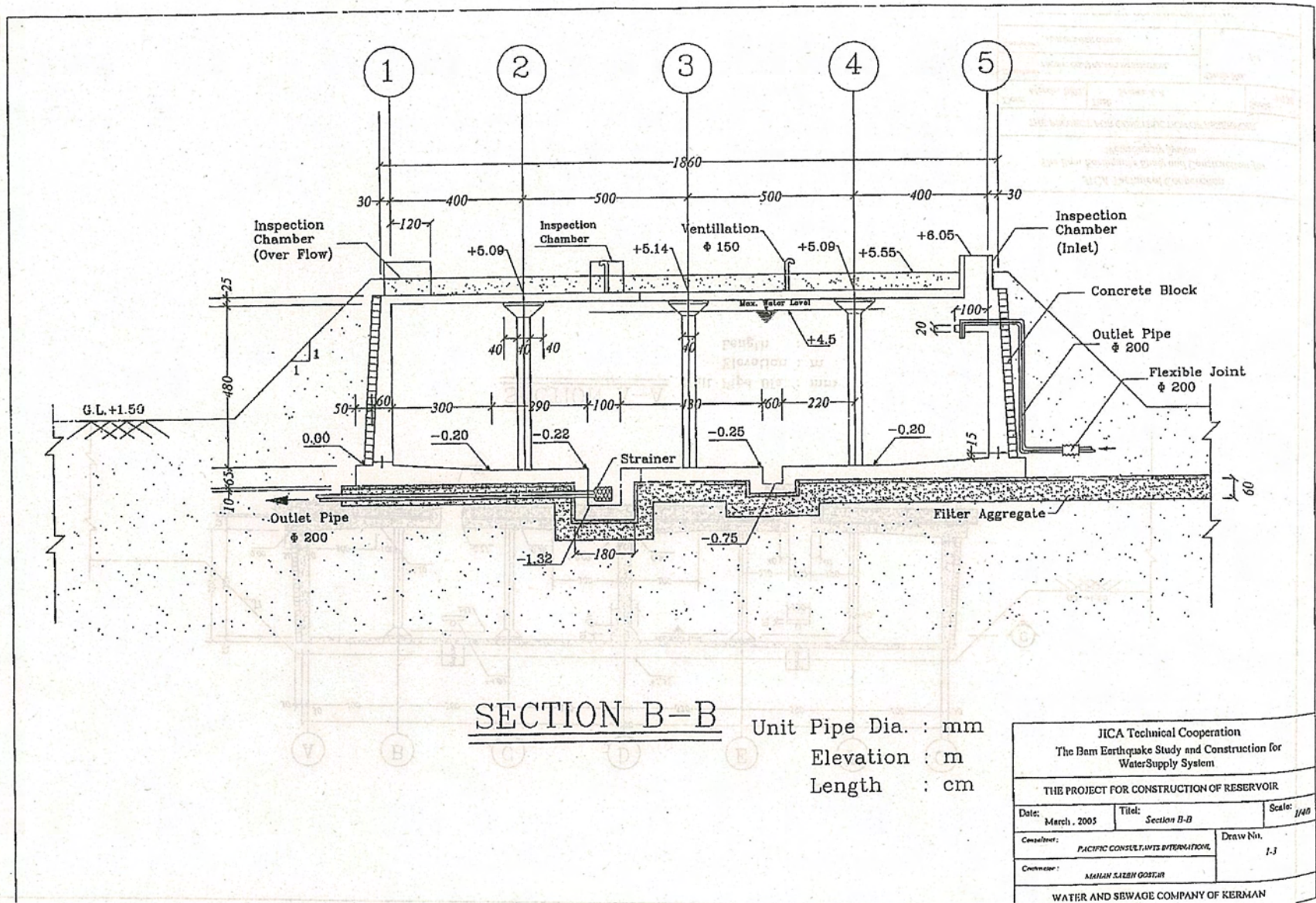


PLAN  
 Unit Length :cm  
 Pipe Dia. :mm

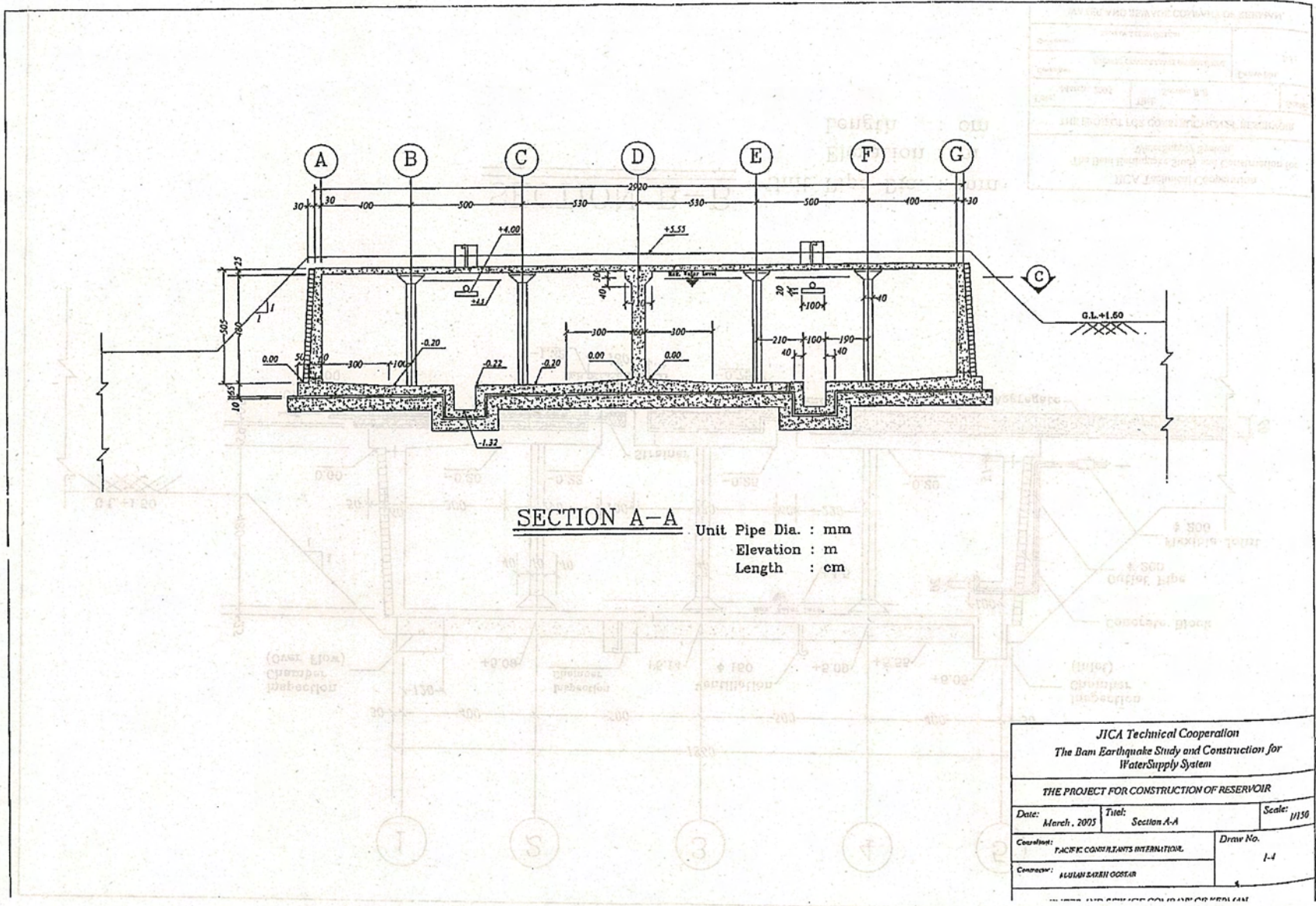
APPROVED FOR CONSTRUCTION	
DATE	BY
DATE	BY
THE PROJECT FOR CONSTRUCTION OF RESERVOIR	
APPROVED FOR CONSTRUCTION	
DATE	
BY	

JICA Technical Cooperation		
The Dam Earthquake Study and Construction for Water Supply System		
THE PROJECT FOR CONSTRUCTION OF RESERVOIR		
Date: March, 2005	Sheet: Plan	Scale:
DRAWN BY: JICA ENGINEERS INTERNATIONAL		
CHECKED BY: JICA ENGINEERS INTERNATIONAL		





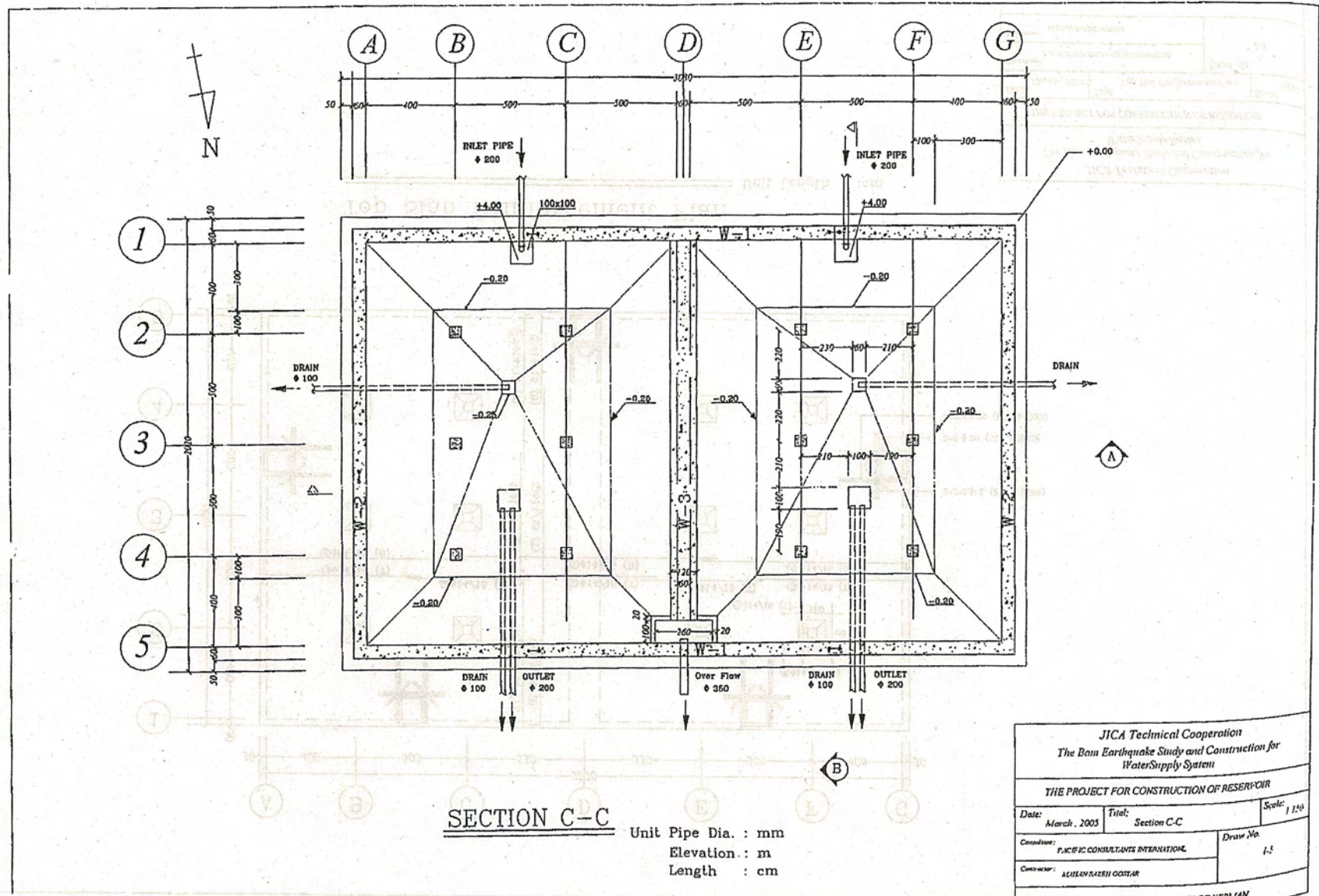




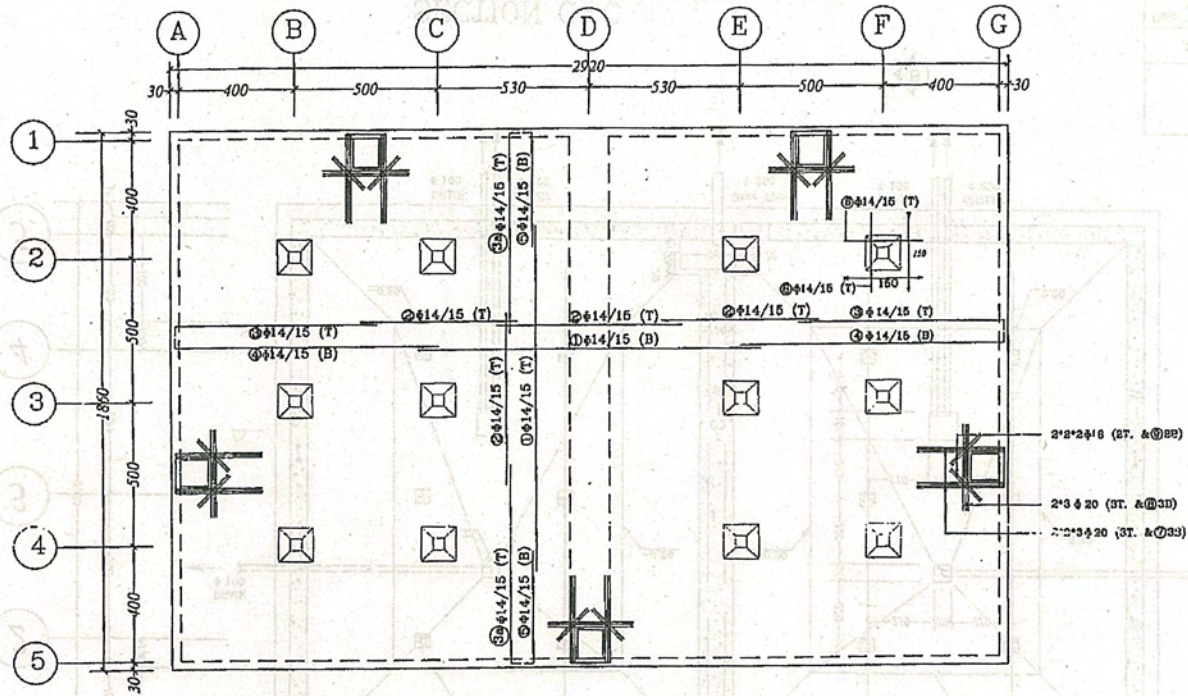
**SECTION A-A**  
 Unit Pipe Dia. : mm  
 Elevation : m  
 Length : cm

JICA Technical Cooperation The Dam Earthquake Study and Construction for Water Supply System		
THE PROJECT FOR CONSTRUCTION OF RESERVOIR		
Date: March, 2005	Title: Section A-A	Scale: 1/150
Coordinator: PACIFIC CONSULTANTS INTERNATIONAL	Draw No. 1-1	
Company: ASULAN SARIN GOSPEL		









JICA Technical Cooperation The Bam Earthquake Study and Construction for Water Supply System		
THE PROJECT FOR CONSTRUCTION OF RESERVOIR		
Date: March, 2005	Title: Top Slab Reinforcement Plan	Scale: 1/150
Consultant: PACIFIC CONSULTANTS INTERNATIONAL		Draw No. 1-6
Contractor: MATHAN SADEH GORBAR		