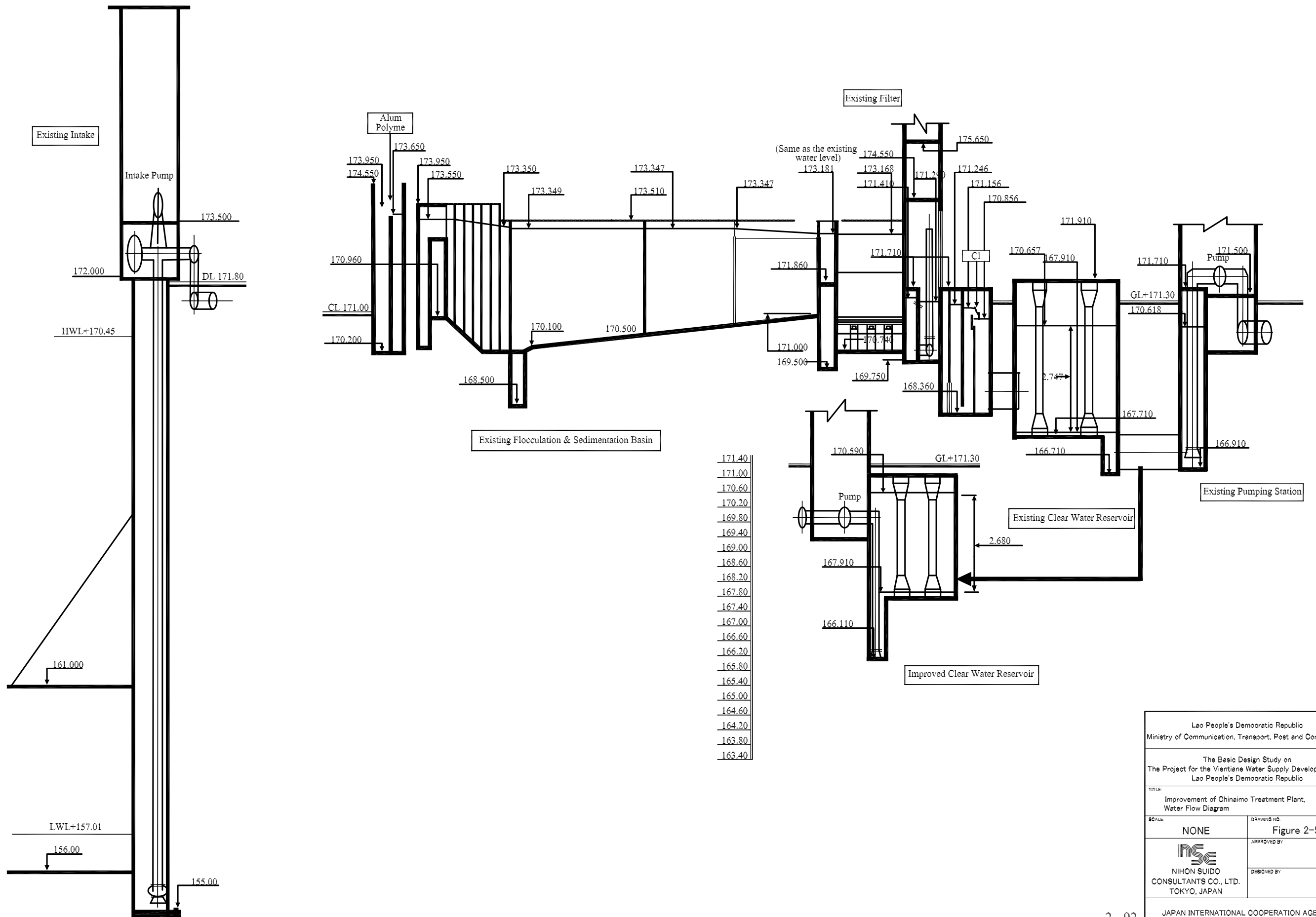
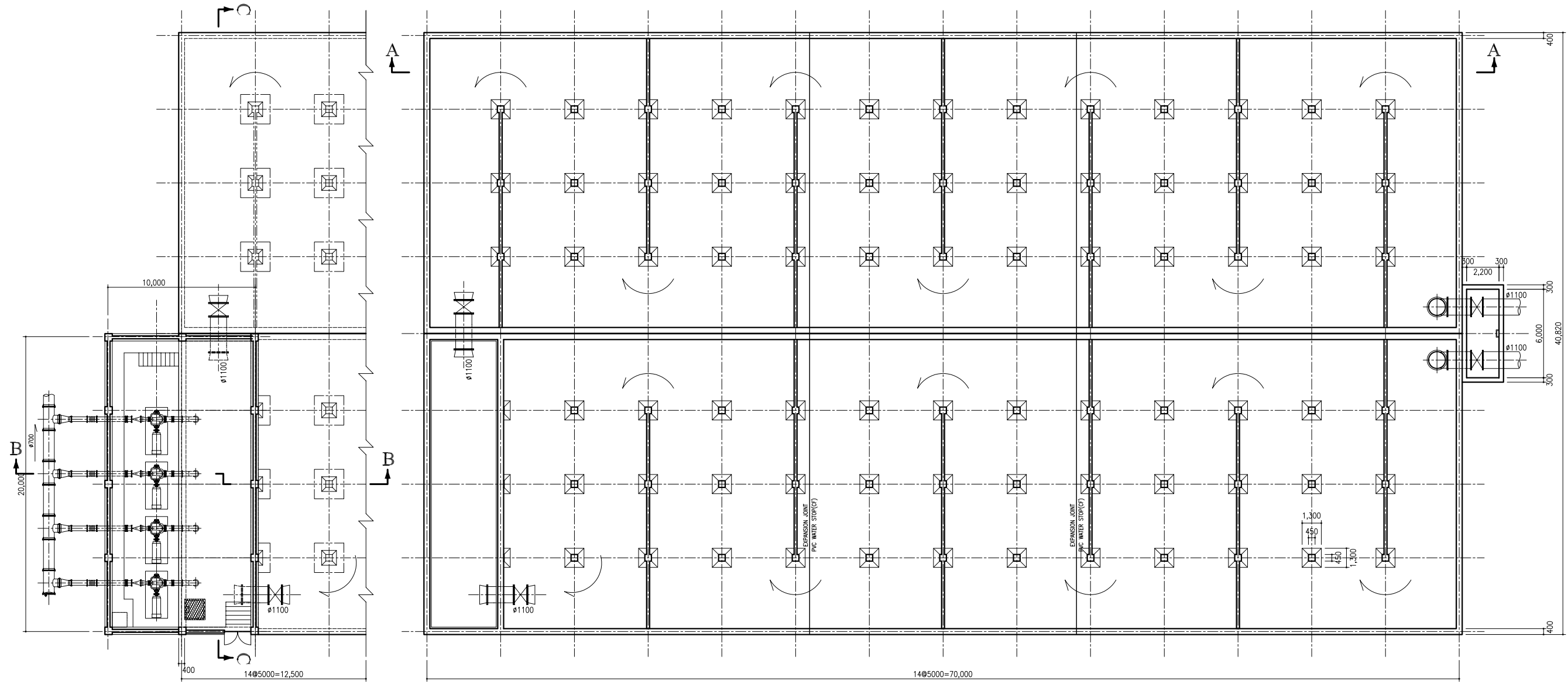


FLOW DIAGRAM OF IMPROVEMENT OF CHINAIMO WATER TREATMENT PLANT

179.20
178.80
178.40
178.00
177.60
177.20
176.80
176.40
176.00
175.60
175.20
174.80
174.40
174.00
173.60
173.20
172.80
172.40
172.00
171.60
171.20
170.80
170.40
170.00
169.60
169.20
168.80
168.40
168.00
167.60
167.20
166.80
166.40
166.00
165.60
165.20
164.80
164.40
164.00
163.60
163.20
162.80
162.40
162.00
161.60
161.20
160.80
160.40
160.00
159.60
159.20
158.80
158.40
158.00
157.60
157.20
156.80
156.40
156.00
155.60
155.20
154.80

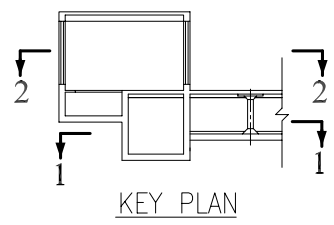


Lao People's Democratic Republic Ministry of Communication, Transport, Post and Construction	
The Basic Design Study on The Project for the Vientiane Water Supply Development in Lao People's Democratic Republic	
TITLE Improvement of Chinaimo Treatment Plant, Water Flow Diagram	
SCALE NONE	DRAWING NO. Figure 2-56
DESIGNED BY INSC NIHON SUIDO CONSULTANTS CO., LTD. TOKYO, JAPAN	APPROVED BY DATE DESIGNED BY DATE
JAPAN INTERNATIONAL COOPERATION AGENCY	




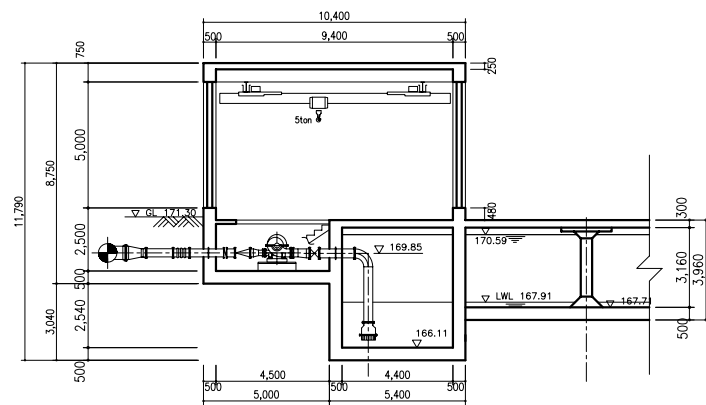
PLAN-2

PLAN-1

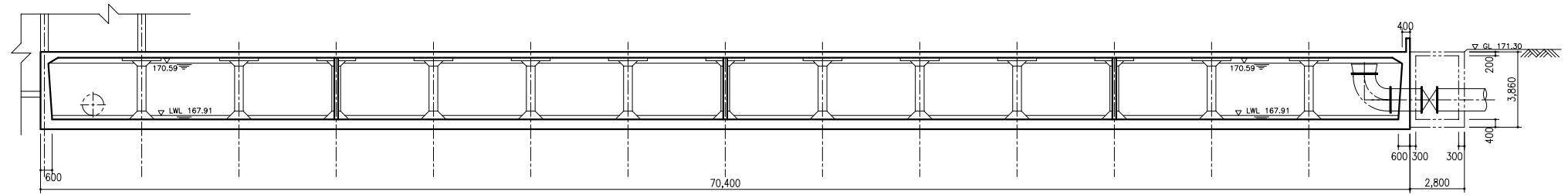


KEY PLAN

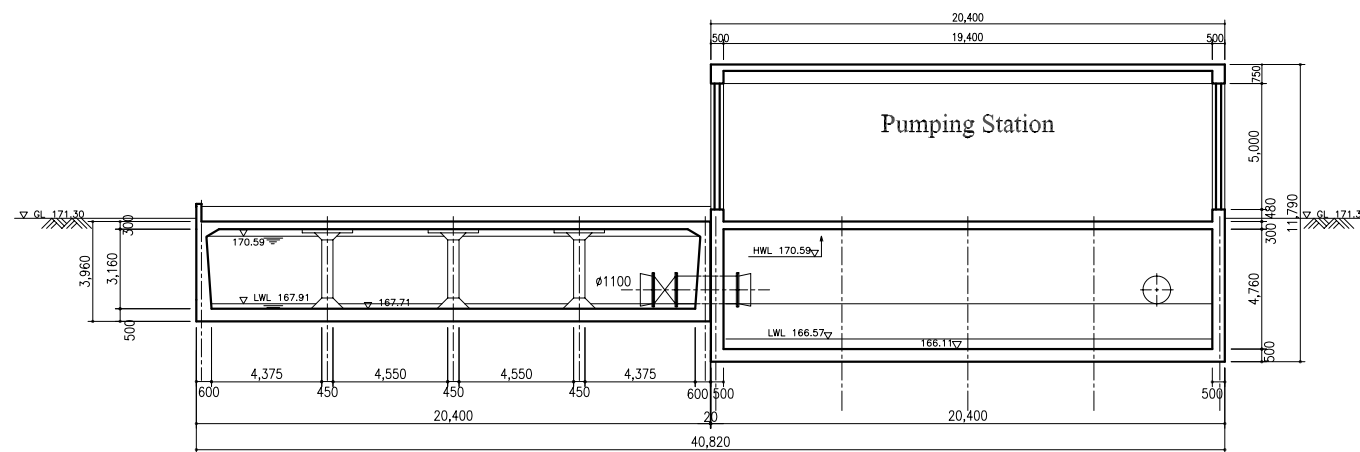
Lao People's Democratic Republic Ministry of Communication, Transport, Post and Construction	
The Basic Design Study on The Project for the Vientiane Water Supply Development in Lao People's Democratic Republic	
TITLE Improvement of Chinalmo Treatment Plant, Plan of Reservoir and Pumping Station	
SCALE 1 / 300	DRAWING NO. Figure 2-57
 NIHON SUIDO CONSULTANTS CO., LTD. TOKYO, JAPAN	APPROVED BY _____ DATE _____ DESIGNED BY _____ DATE _____
JAPAN INTERNATIONAL COOPERATION AGENCY	



SECTION B-B

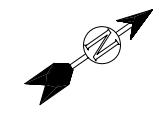


SECTION A-A



SECTION C-C

Leo People's Democratic Republic Ministry of Communication, Transport, Post and Construction	
The Basic Design Study on The Project for the Vientiane Water Supply Development in Leo People's Democratic Republic	
TITLE Improvement of Chinaimo Treatment Plant, Section of Reservoir and Pumping Station	
SCALE 1 / 300	DRAWING NO. Figure 2-58
 NIHON SUJIDO CONSULTANTS CO., LTD. TOKYO, JAPAN	APPROVED BY _____ DATE _____
	DESIGNED BY _____ DATE _____
JAPAN INTERNATIONAL COOPERATION AGENCY	



Branch from Existing Pipeline($\phi 300$)

Planned Distribution Pipeline(DIP $\phi 150$)

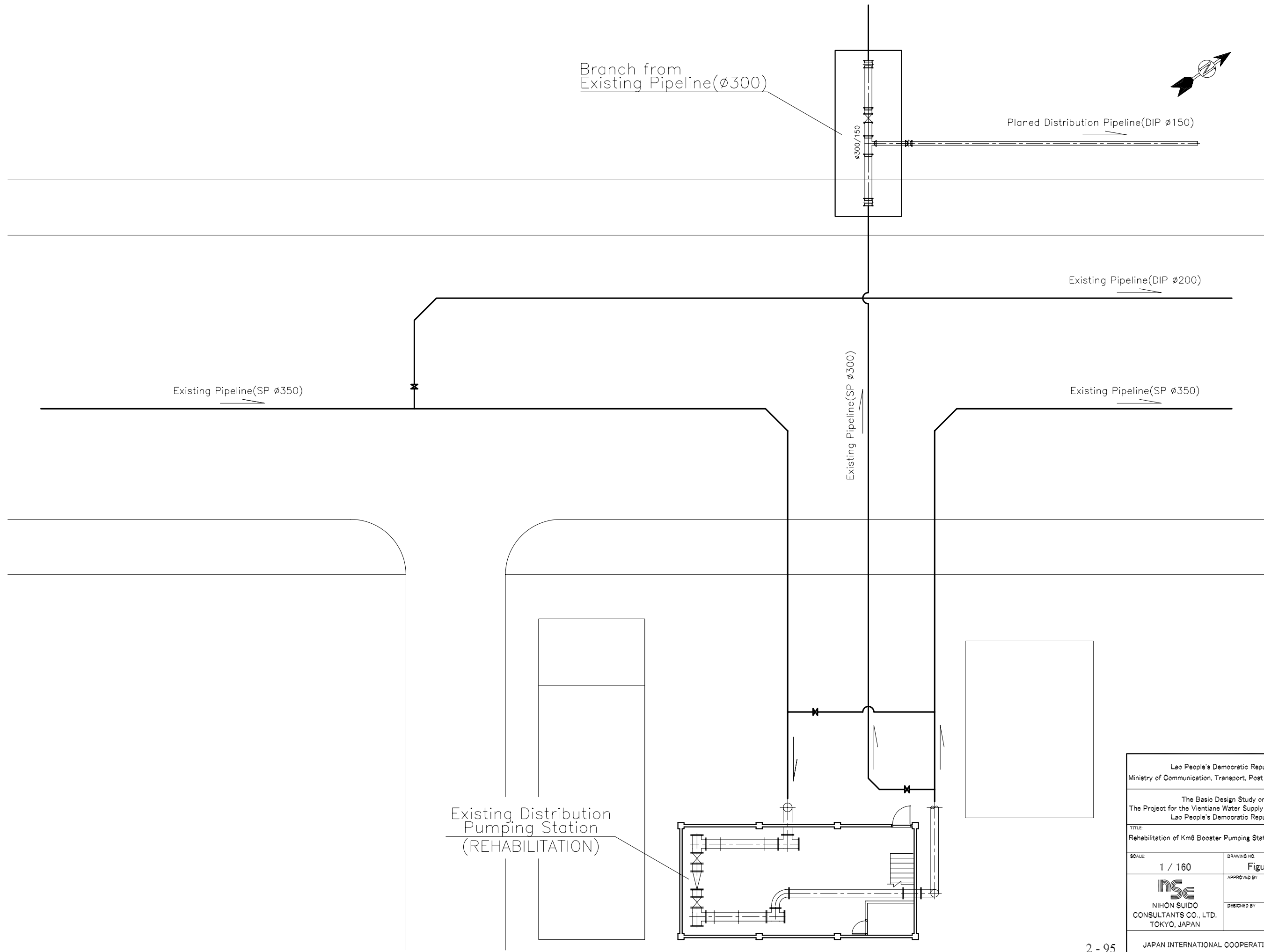
Existing Pipeline(DIP $\phi 200$)

Existing Pipeline(SP $\phi 350$)

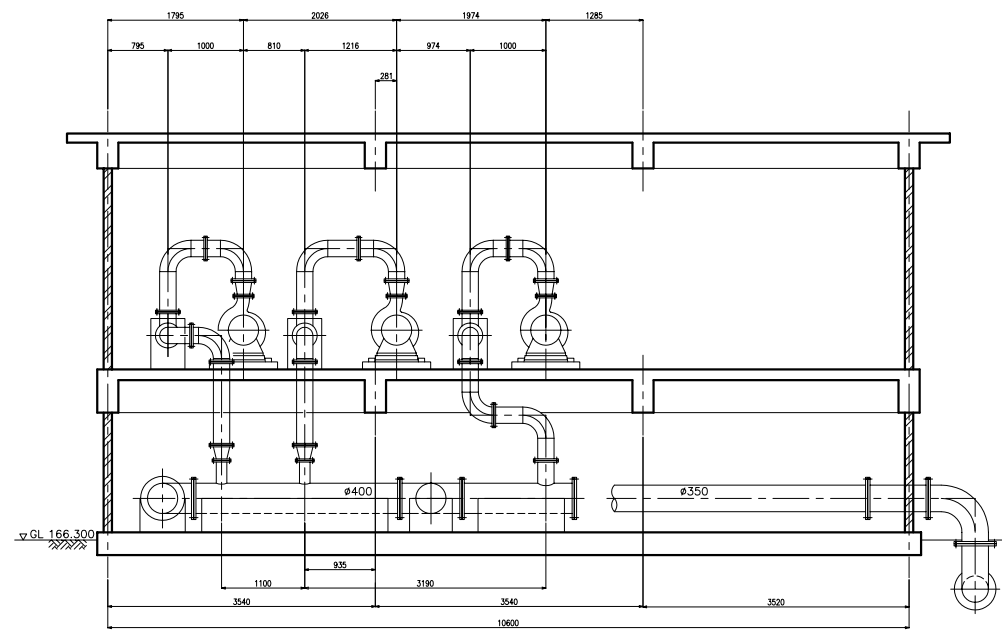
Existing Pipeline(SP $\phi 350$)

Existing Pipeline(SP $\phi 300$)

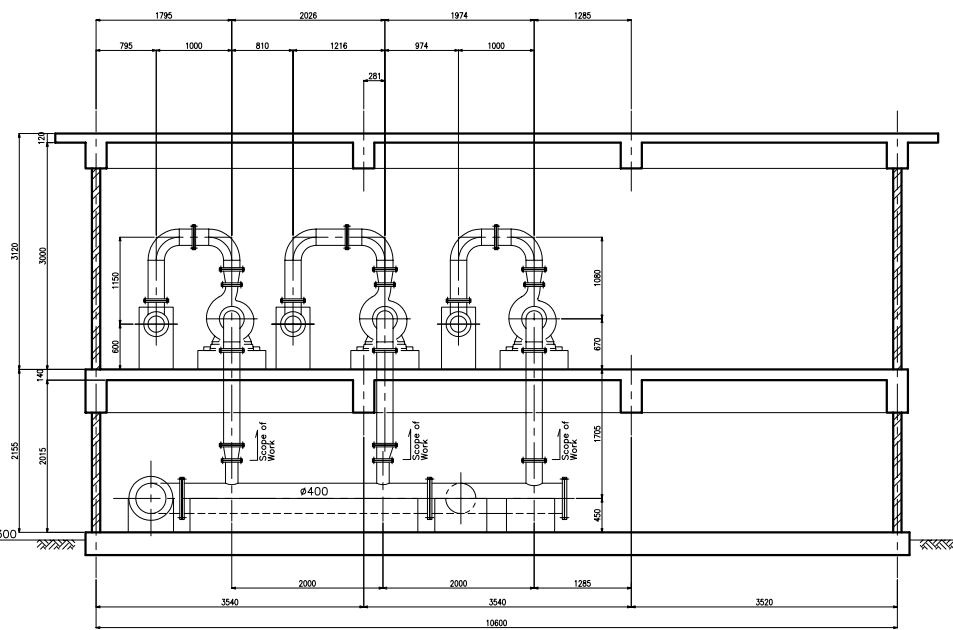
Existing Distribution Pumping Station (REHABILITATION)



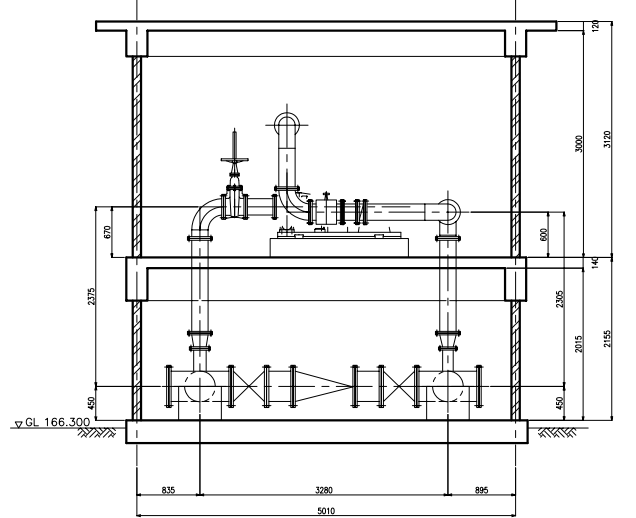
Leo People's Democratic Republic Ministry of Communication, Transport, Post and Construction	
The Basic Design Study on The Project for the Vientiane Water Supply Development in Leo People's Democratic Republic	
TITLE Rehabilitation of Km8 Booster Pumping Station, General Plan	
SCALE 1 / 160	DRAWING NO. Figure 2-59
APPROVED BY	DATE
DESIGNED BY	DATE
INS NIHON SUIJO CONSULTANTS CO., LTD. TOKYO, JAPAN	
JAPAN INTERNATIONAL COOPERATION AGENCY	



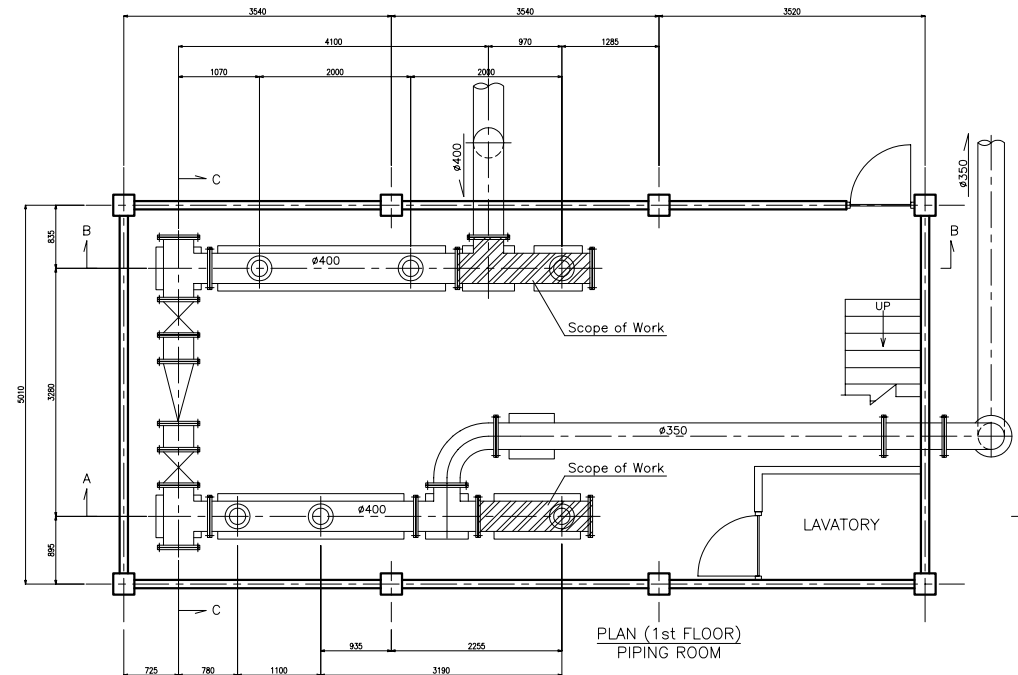
SECTION A-A



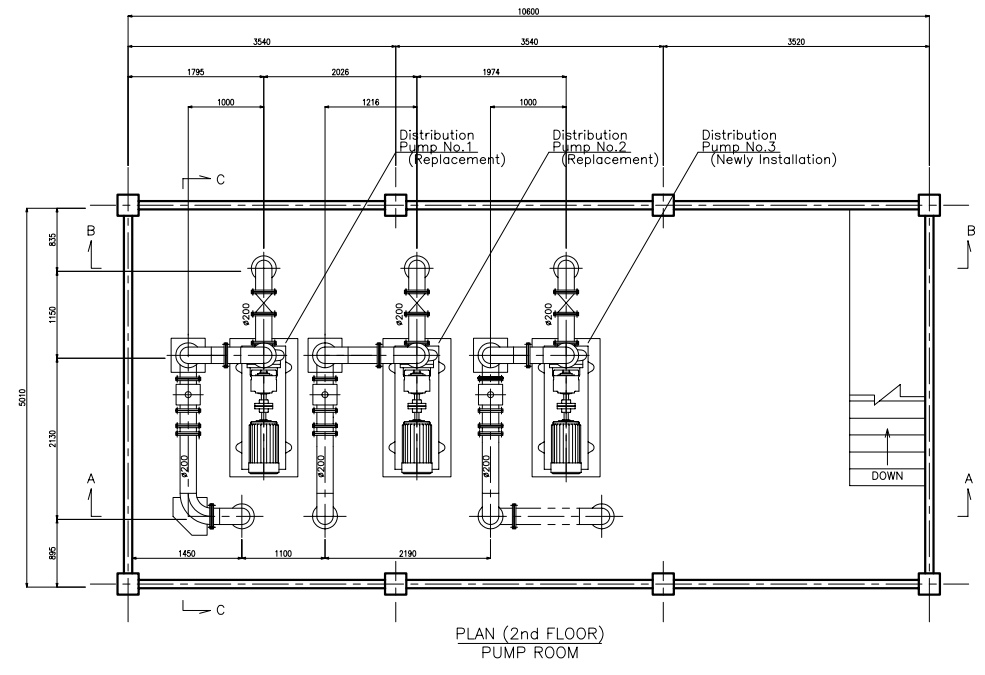
SECTION B-B



SECTION C-C

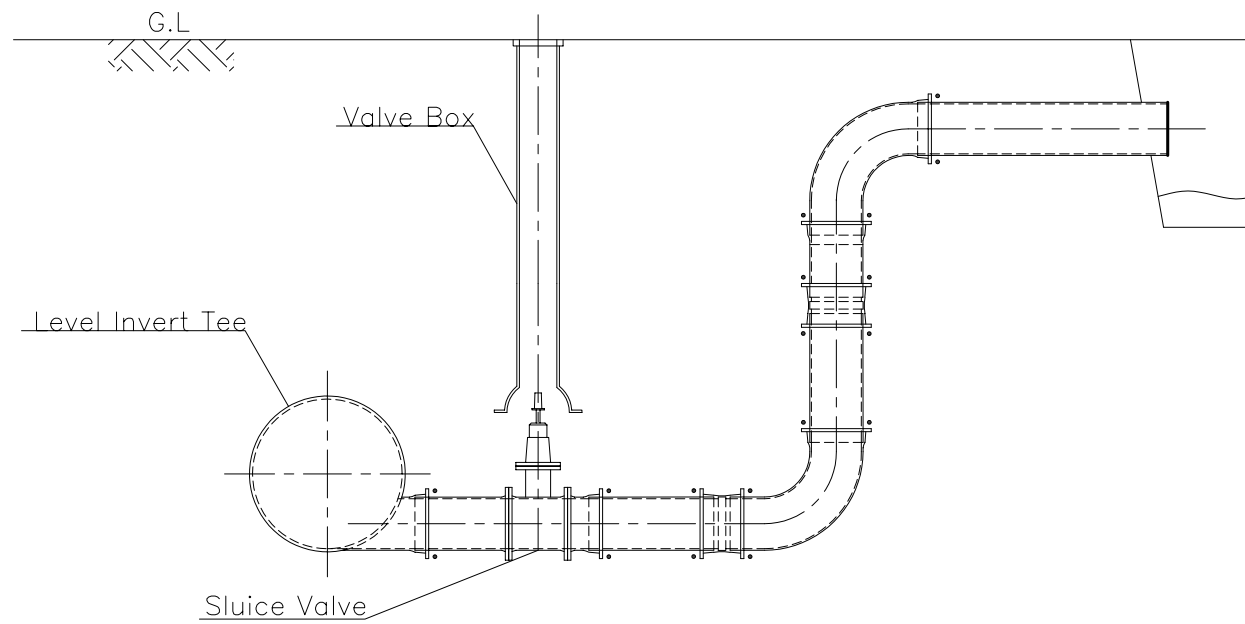


PLAN (1st FLOOR) PIPING ROOM



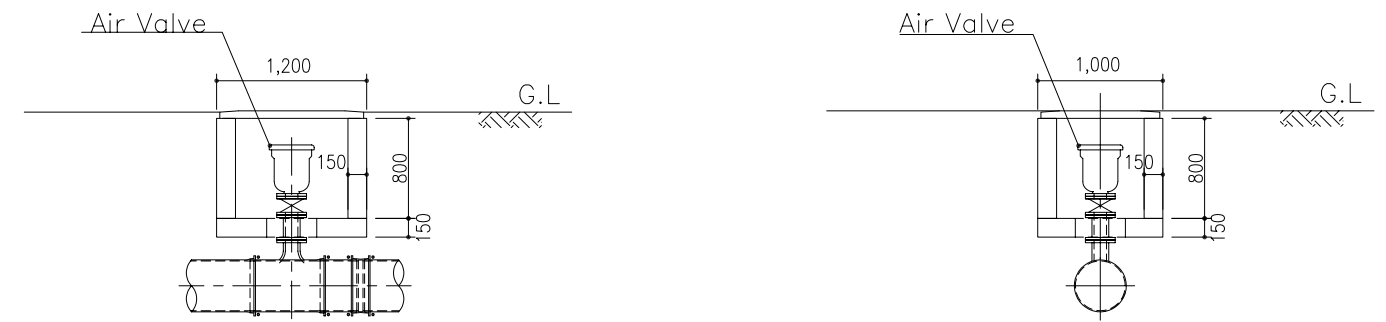
PLAN (2nd FLOOR) PUMP ROOM

Lao People's Democratic Republic Ministry of Communication, Transport, Post and Construction	
The Basic Design Study on The Project for the Vientiane Water Supply Development in Lao People's Democratic Republic	
TITLE Rehabilitation of Km8 Booster Pumping Station, Detail of Existing Pumping Station	
SCALE 1 / 100	DRAWING NO. Figure 2-60
NIHON SUIDO CONSULTANTS CO., LTD. TOKYO, JAPAN	APPROVED BY _____ DATE _____ DESIGNED BY _____ DATE _____
JAPAN INTERNATIONAL COOPERATION AGENCY	



Note: Drainage Valve Assembly includes Valve Assembly.
Pipe Arrangement should be changed according to site condition.

Typical Drainage Valve Assembly



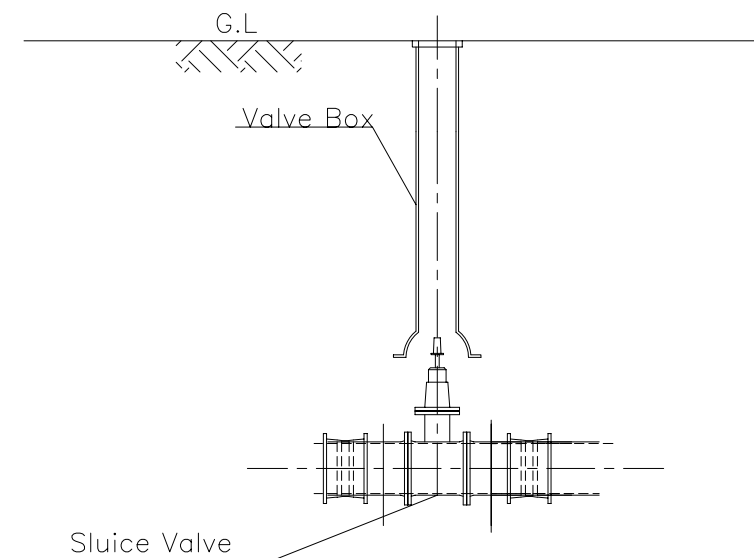
Typical Drawing of Air Valve & Chamber

MATERIAL LIST

No	Description	Q'ty
No.01	Tee with Flange	1 pce
No.02	Service Valve	1 pce
No.03	Air Valve	1 pce
No.04	Collar	1 pce
No.05	Straight Pipe	1 pce

MATERIAL LIST

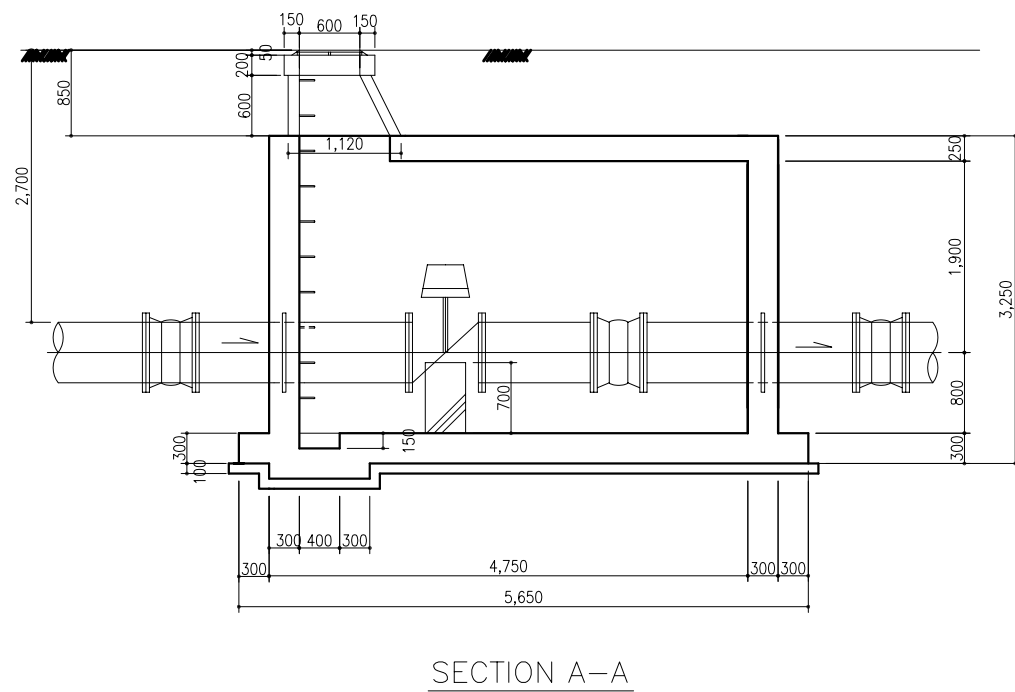
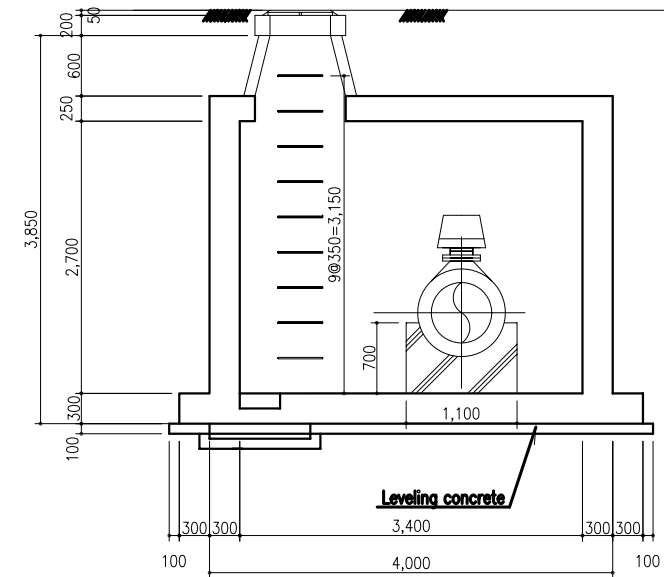
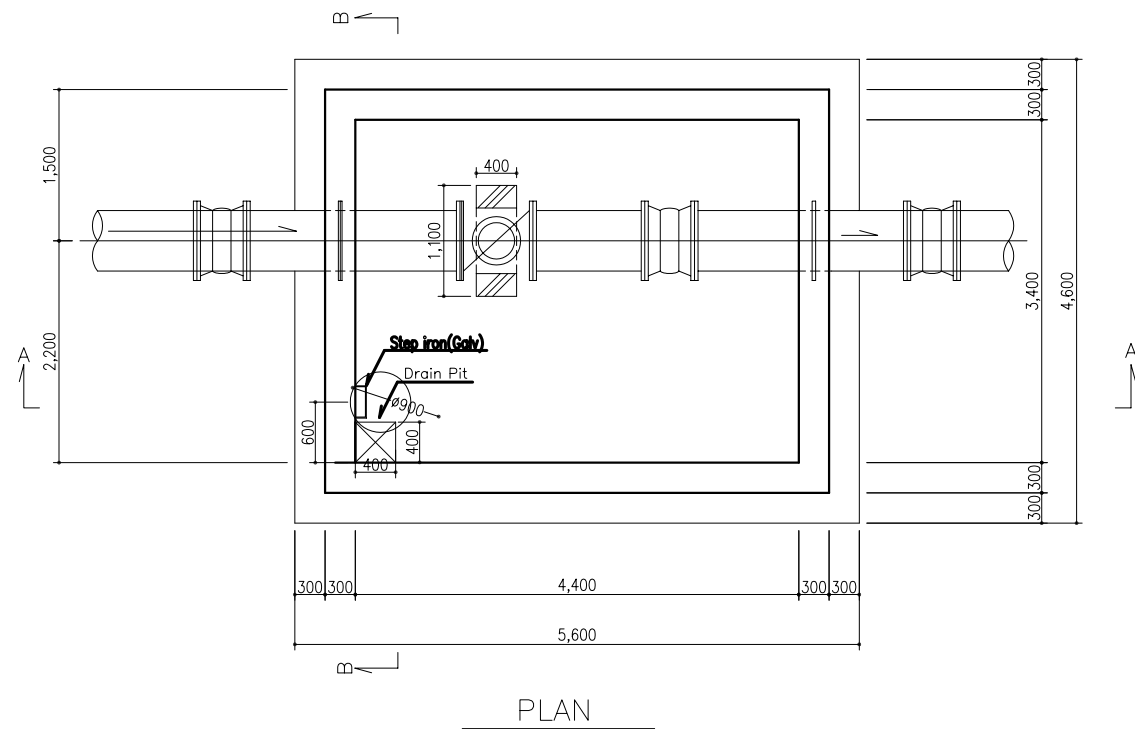
No	Description	Q'ty
No.01	Level Invert Tee	1 pce
No.02	Sluice Valve	1 pce
No.03	90° Bend	2 pcs
No.04	Collar	2 pcs
No.05	Straight Pipe	4 pcs



Typical Valve Assembly(Cover Type)

Note: Valve Cover should be selected in case of pipe of less than Diameter 400mm.
Valve Chamber should be selected in case of pipe of Diameter 400mm and more.

Leo People's Democratic Republic Ministry of Communication, Transport, Post and Construction	
The Basic Design Study on The Project for the Vientiane Water Supply Development in Leo People's Democratic Republic	
TITLE Typical Drawings of Valve	
SCALE NONE	DRAWING NO. Figure 2-61
 NIHON SUIDO CONSULTANTS CO., LTD. TOKYO, JAPAN	APPROVED BY _____ DATE _____
	DESIGNED BY _____ DATE _____
JAPAN INTERNATIONAL COOPERATION AGENCY	



Note: Valve Chamber should be selected in case of pipe of Diameter 400mm and more.
 Valve Cover should be selected in case of pipe of less than Diameter 400mm.
 Dimension of chamber should be changed according to site condition.

Lao People's Democratic Republic Ministry of Communication, Transport, Post and Construction	
The Basic Design Study on The Project for the Vientiane Water Supply Development in Lao People's Democratic Republic	
TITLE Typical Drawing of Valve Chamber	
SCALE 1 / 75	DRAWING NO. Figure 2-62
INSC NIHON SUJIDO CONSULTANTS CO., LTD. TOKYO, JAPAN	APPROVED BY _____ DATE _____ DESIGNED BY _____ DATE _____
JAPAN INTERNATIONAL COOPERATION AGENCY	