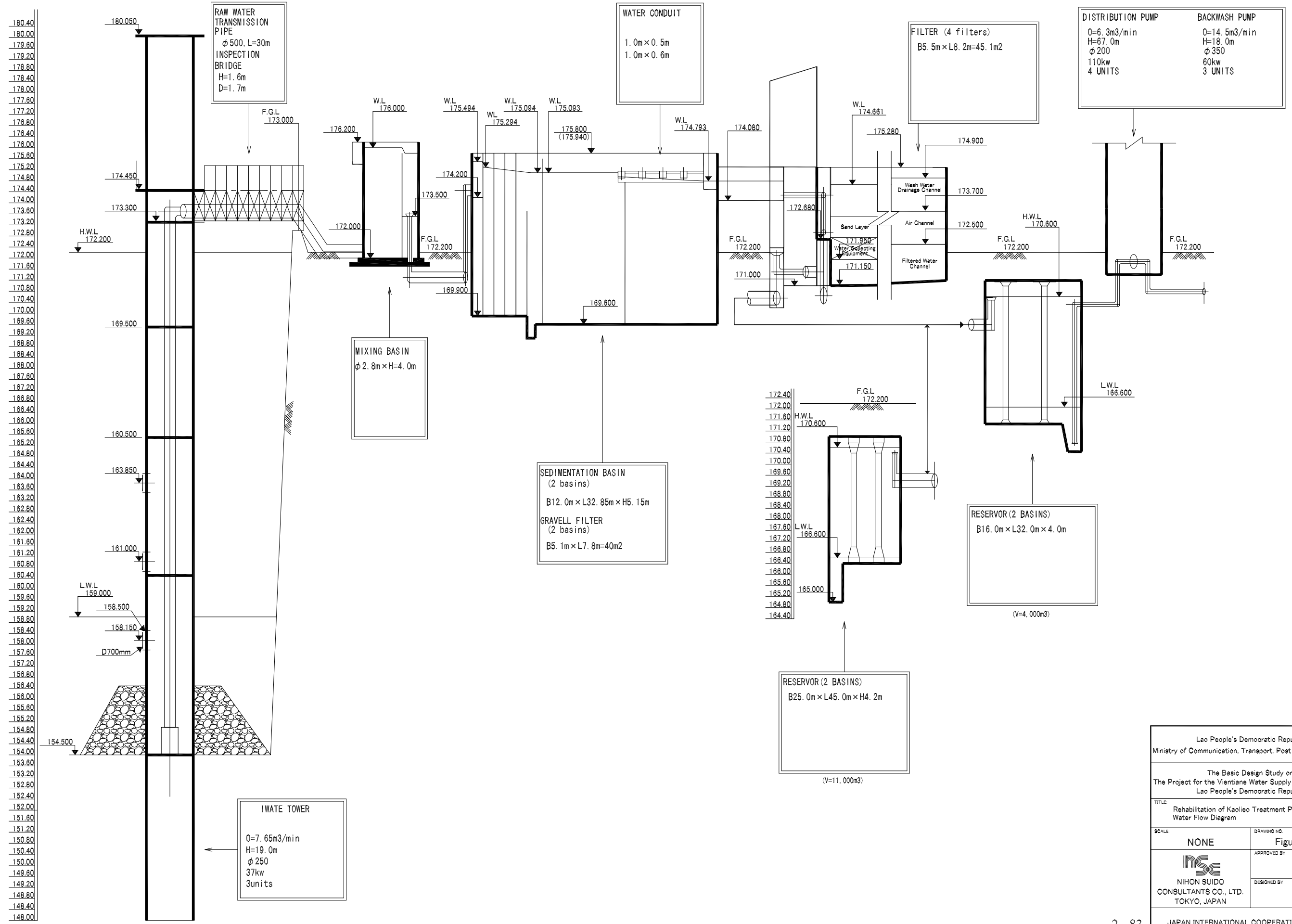
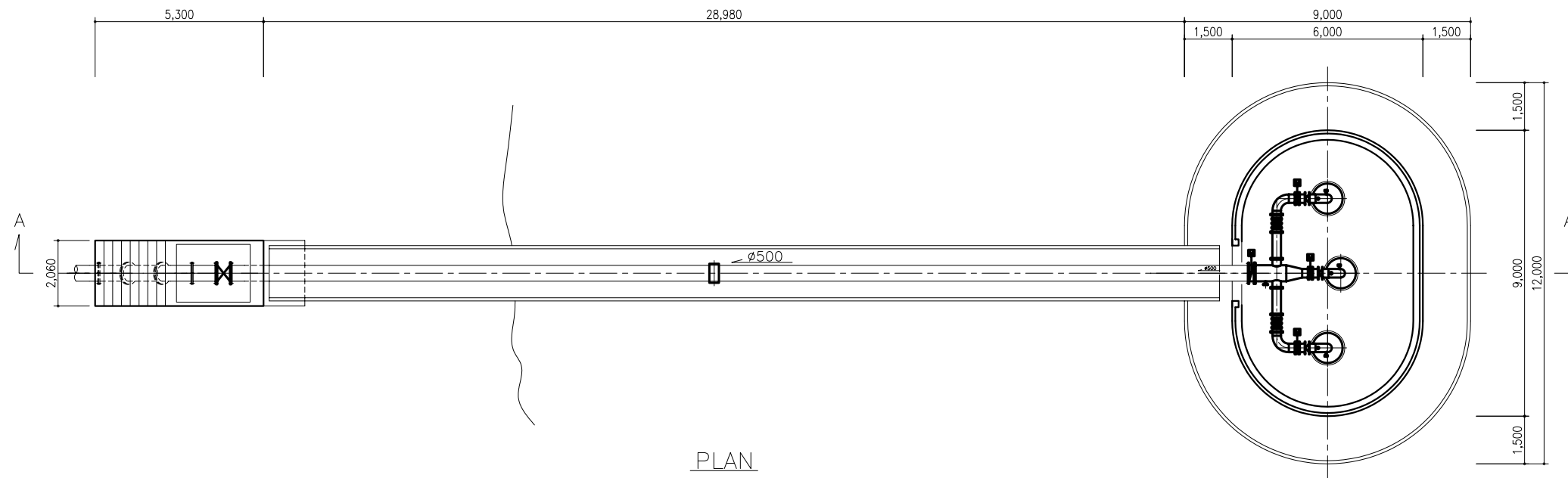


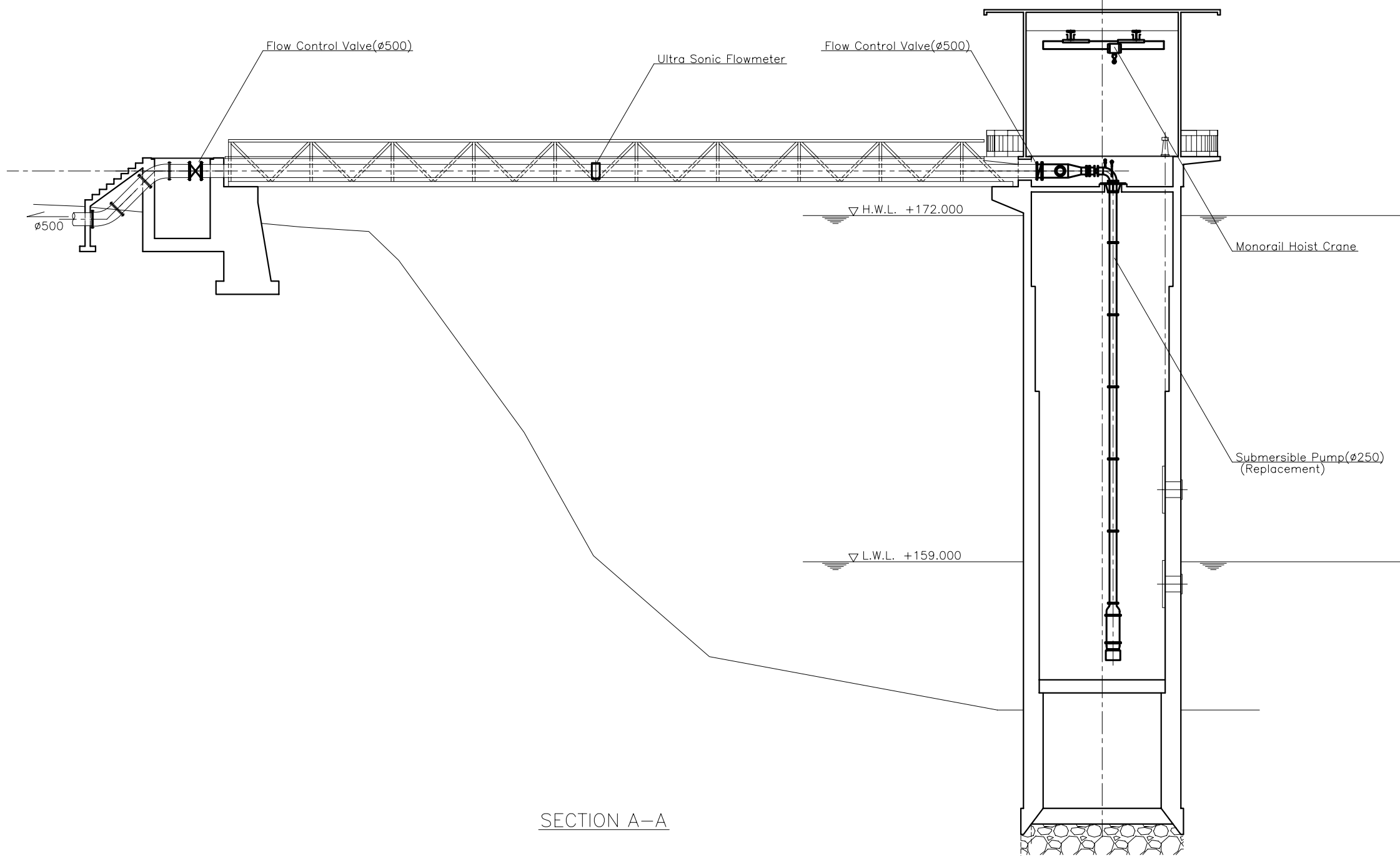
# FLOW DIAGRAM OF REHABILITATION OF KAOLIEO WATER TREATMENT PLANT



Lao People's Democratic Republic Ministry of Communication, Transport, Post and Construction	
The Basic Design Study on The Project for the Vientiane Water Supply Development in Lao People's Democratic Republic	
TITLE Rehabilitation of Kaolieo Treatment Plant, Water Flow Diagram	
SCALE NONE	DRAWING NO. Figure 2-47
DESIGNED BY _____ DATE _____ APPROVED BY _____ DATE _____	
INSC NIHON SUIDO CONSULTANTS CO., LTD. TOKYO, JAPAN	
JAPAN INTERNATIONAL COOPERATION AGENCY	

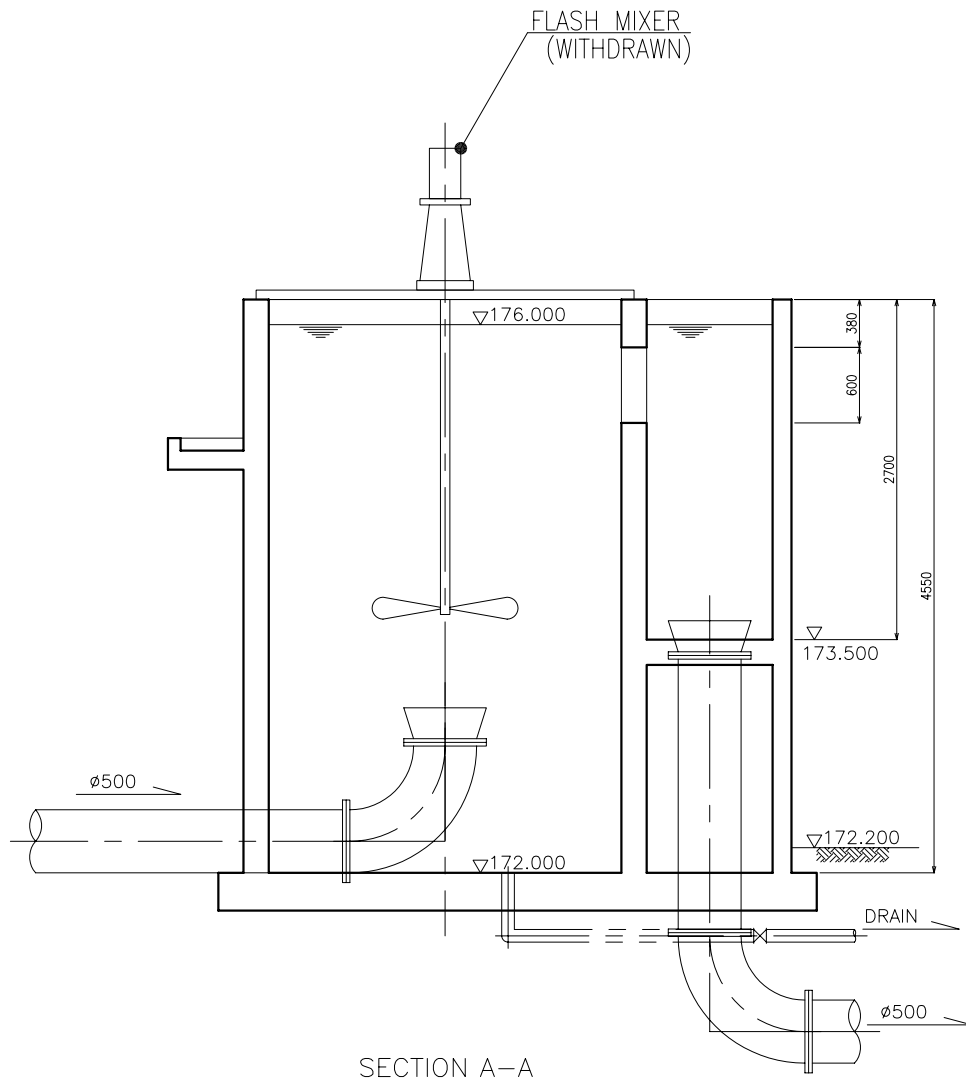


PLAN

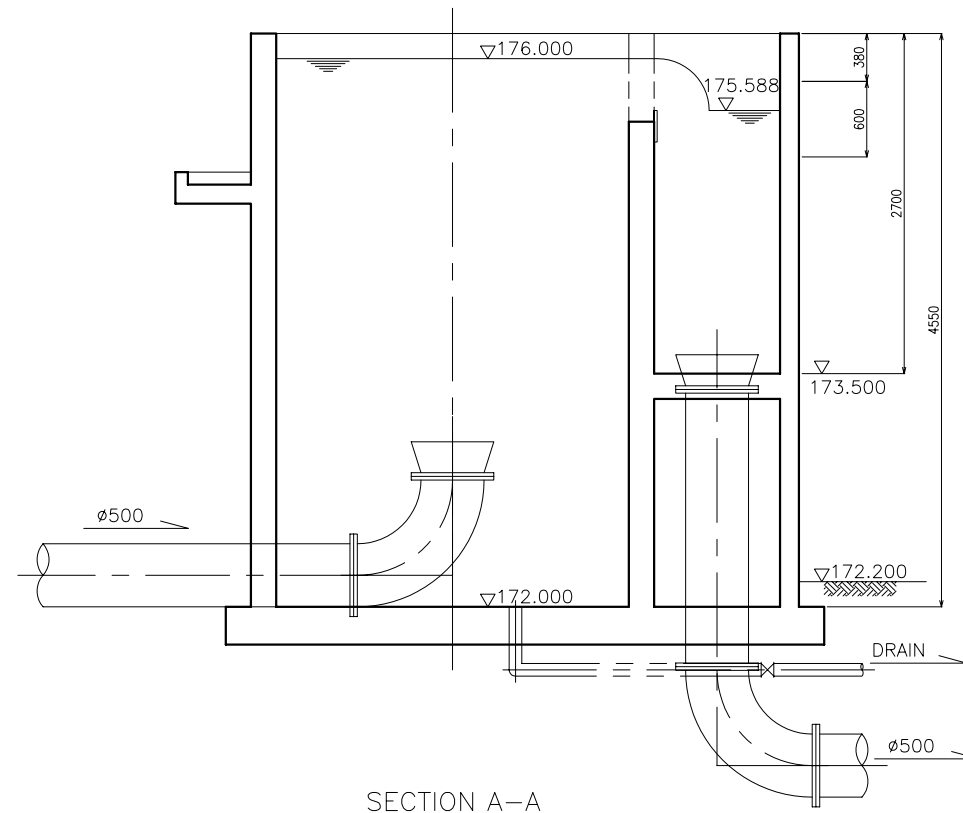


SECTION A-A

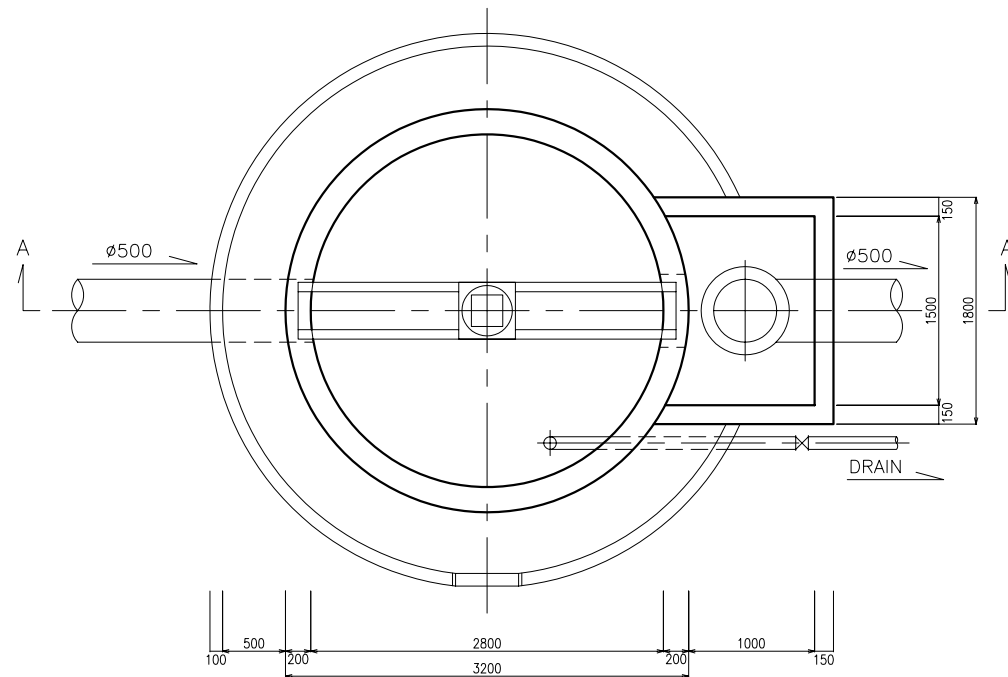
Lao People's Democratic Republic Ministry of Communication, Transport, Post and Construction	
The Basic Design Study on The Project for the Vientiane Water Supply Development in Lao People's Democratic Republic	
TITLE Rehabilitation of Kaolie Treatment Plant, Details of Intake Tower	
SCALE 1/200	DRAWING NO. Figure 2-48
INSC NIHON SUJIDO CONSULTANTS CO., LTD. TOKYO, JAPAN	APPROVED BY _____ DATE _____ DESIGNED BY _____ DATE _____
JAPAN INTERNATIONAL COOPERATION AGENCY	



SECTION A-A

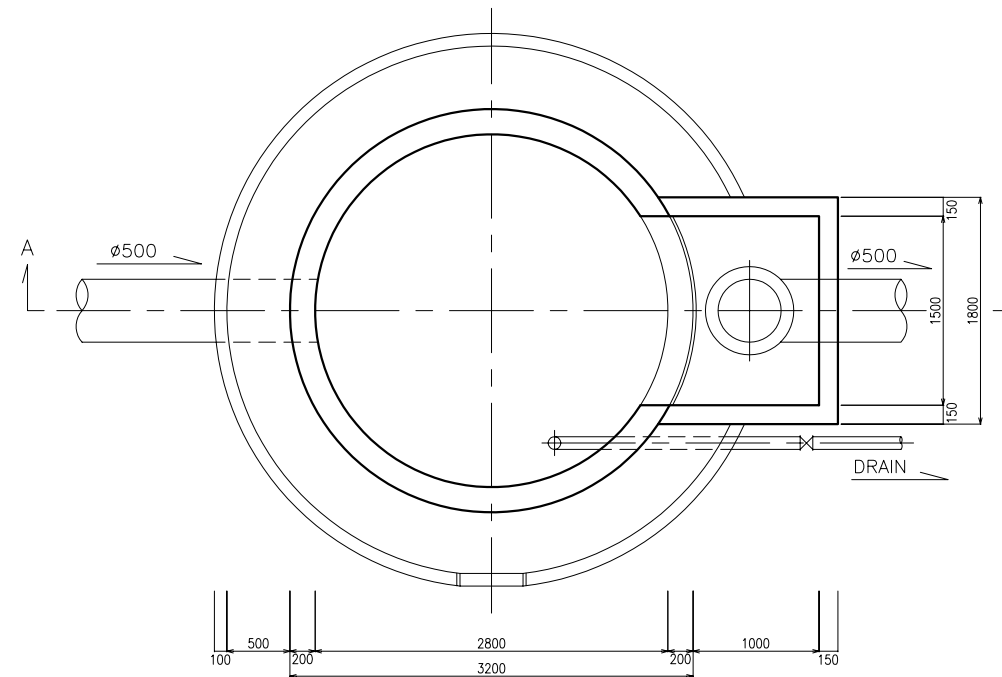


SECTION A-A



PLAN

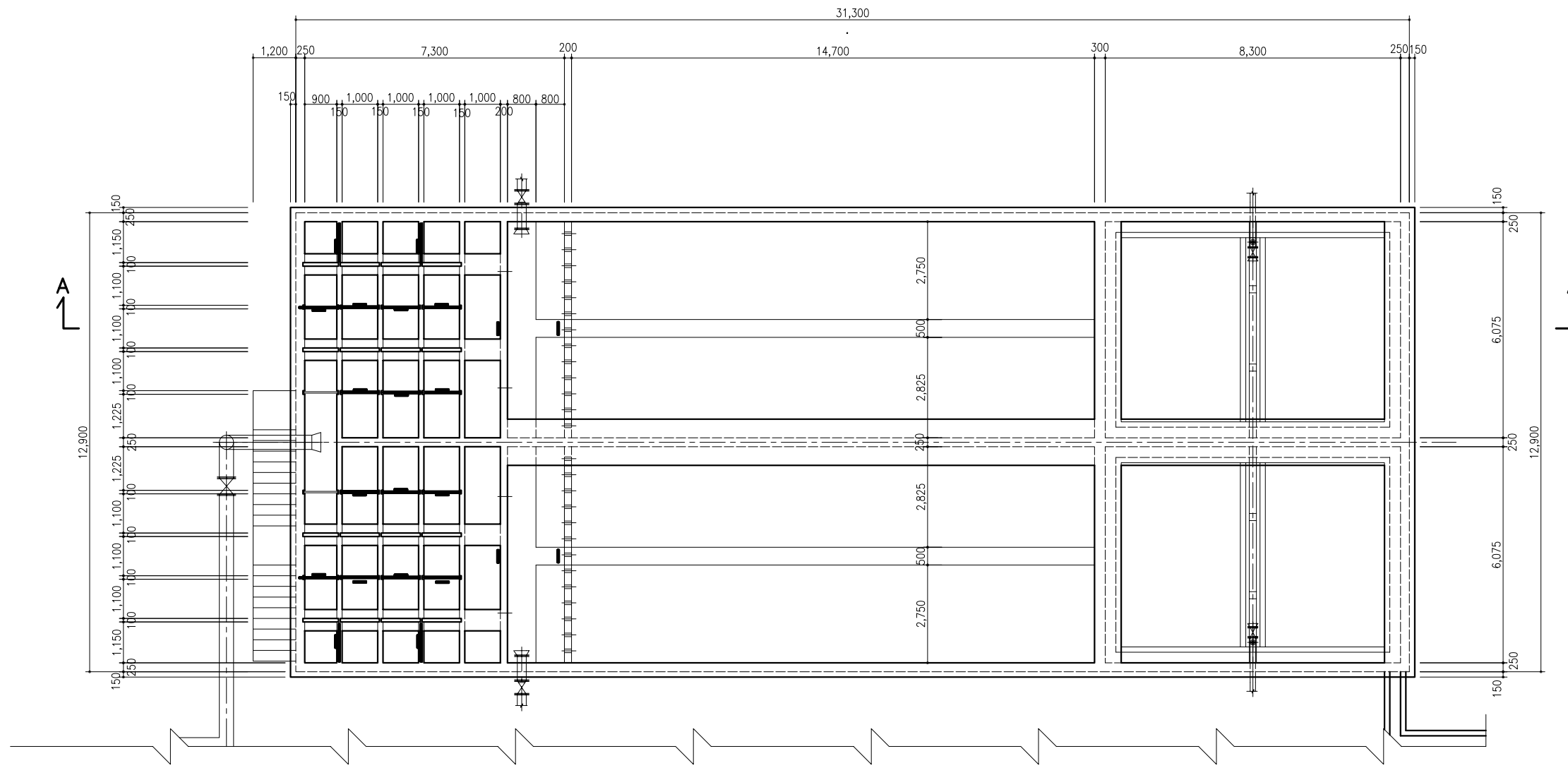
EXISTING CONDITION



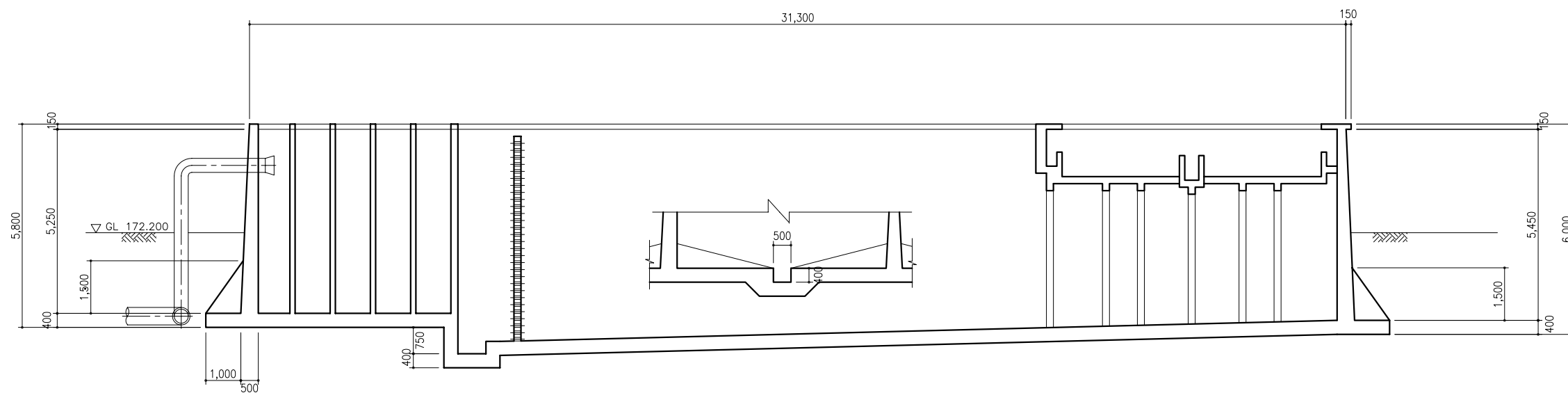
PLAN

REHABILITATION PLAN

Lao People's Democratic Republic Ministry of Communication, Transport, Post and Construction	
The Basic Design Study on The Project for the Vientiane Water Supply Development in Lao People's Democratic Republic	
TITLE Rehabilitation of Keoleo Treatment Plant, Details of Receiving Well	
SCALE 1/60	DRAWING NO. Figure 2-49
INSC NIHON SUJIDO CONSULTANTS CO., LTD. TOKYO, JAPAN	APPROVED BY _____ DATE _____ DESIGNED BY _____ DATE _____
JAPAN INTERNATIONAL COOPERATION AGENCY	



PLAN



SECTION A-A

Lao People's Democratic Republic Ministry of Communication, Transport, Post and Construction	
The Basic Design Study on The Project for the Vientiane Water Supply Development in Lao People's Democratic Republic	
TITLE Rehabilitation of Kaoleo Treatment Plant, Plan of Sedimentation Basin (Before Rehabilitation)	
SCALE 1/150	DRAWING NO. Figure 2-50
INSC NIHON SUJIDO CONSULTANTS CO., LTD. TOKYO, JAPAN	APPROVED BY _____ DATE _____ DESIGNED BY _____ DATE _____
JAPAN INTERNATIONAL COOPERATION AGENCY	



