

ATTACHMENT

Attachment-1: GIS Maps for each Province	A - 1
Attachment-2: Brief Project Features & Drawings for Pre-F/S project Sites.....	A - 9
Attachment-3: List of collected data	A - 53
Attachment-4: Photographs during Field Surveys (1st ~6th).....	A - 54
Attachment-5: Member List of DOE/PDIH and JICA Study Team.....	A - 64
Attachment-6: Actual Manning Schedule for Master Plan Study	A - 67

200 Phongsaly
HH Electrification Ratio
14% (2005) – 67% (2020)

206 Gnot Ou
HH Electrification Ratio
5% (2005) – 50% (2020)

201 Phongsaly
HH Electrification Ratio
33% (2005) – 80% (2020)

204 Samphan
HH Electrification Ratio
6% (2005) – 60% (2020)

205 Bouneua
HH Electrification Ratio
28% (2005) – 80% (2020)

EDL 115kV Extention
to Bouneua
after 2010 (Not PTD 2)

207 Bountai
HH Electrification Ratio
12% (2005) – 100% (2020)

202 May
HH Electrification Ratio
6% (2005) – 40% (2020)

203 Khua
HH Electrification Ratio
12% (2005) – 70% (2020)

Figure 1 Electrification Plan in Phongsaly



Legend

Classified Village

- ▲ Electrified by EDL Grid
- ▲ Electrified by Import Electricity
- ▲ Electrified by Off-grid (Hydro power)
- Electrified by Off-grid (Pico)
- ▲ Electrified by Off-grid (Diesel)
- ★ Electrified by Off-grid (Solar)
- None
- EDL Short Term
- EDL Long Term
- JICA Off-grid Pre-F/S
- Potential site (Village Hydro Class)
- Existing Plan of Pico-hydro and Diesel
- Existing Plan of Solar Power
- Others

Road

- Paved Road
- Street Road
- Improved Unpaved Road
- Unpaved Road
- Temporary Road
- Footpath

115kv Transmission line

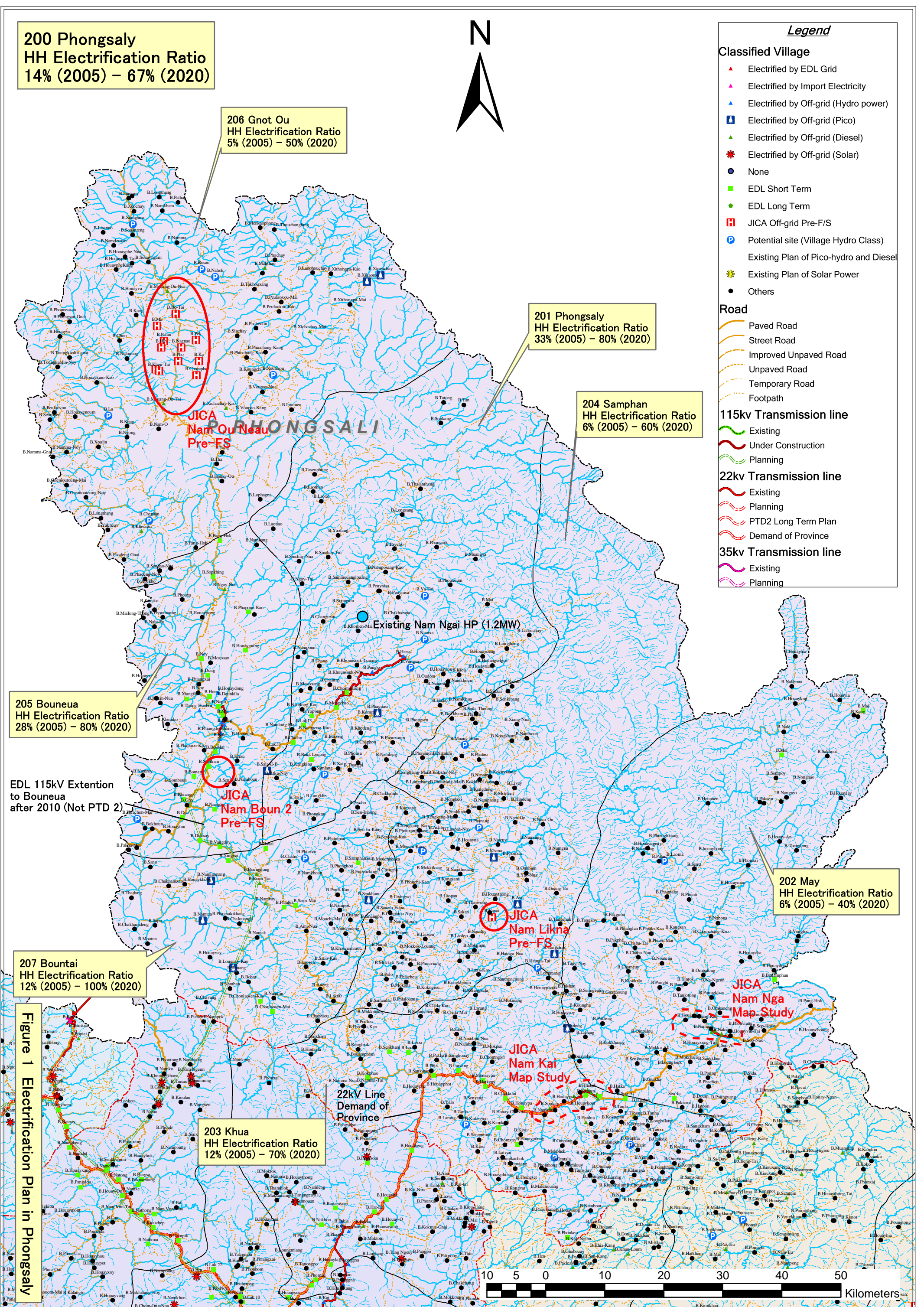
- Existing
- Under Construction
- Planning

22kv Transmission line

- Existing
- Planning
- PTD2 Long Term Plan
- Demand of Province

35kv Transmission line

- Existing
- Planning



- Legend**
- Classified Village**
- ▲ Electrified by EDL Grid
 - ▲ Electrified by Import Electricity
 - ▲ Electrified by Off-grid (Hydro power)
 - ▲ Electrified by Off-grid (Pico)
 - ▲ Electrified by Off-grid (Diesel)
 - ▲ Electrified by Off-grid (Solar)
 - None
 - EDL Short Term
 - EDL Long Term
 - JICA Off-grid Pre-F/S
 - Potential site (Village Hydro Class)
 - Existing Plan of Pico-hydro and Diesel
 - Existing Plan of Solar Power
 - Others
- Road**
- Paved Road
 - Street Road
 - Improved Unpaved Road
 - Unpaved Road
 - Temporary Road
 - Footpath
- 115kv Transmission line**
- Existing
 - Under Construction
 - Planning
- 22kv Transmission line**
- Existing
 - Planning
 - PTD2 Long Term Plan
 - Demand of Province
- 35kv Transmission line**
- Existing
 - Planning

300 Luangnamtha
HH Electrification Ratio
35% (2005) – 80% (2020)

303 Long
HH Electrification Ratio
10% (2005) – 60% (2020)

304 Viengkhoukha
HH Electrification Ratio
23% (2005) – 80% (2020)

302 Sing
HH Electrification Ratio
42% (2005) – 80% (2020)

301 Namtha
HH Electrification Ratio
65% (2005) – 100% (2020)

305 Nalae
HH Electrification Ratio
15% (2005) – 70% (2020)

Import Electricity 2003–2007
 Import: 585 kip/kWh
 Sell: 1,000 kip/kWh
 Peak Demand: 1MW
 Capacity: 6MW

Nam Tha 3
1.2 MW
Under construction

EDL 22kv
from Sing to Xiengkok
up to 2008 (PTD 2)

JICA
Nam Long
Pre-F/S

JICA
Nam Pha
Site Recon.

JICA
Nam Heng
Site Recon.

22kv Line
Demand of Province

35kv from China

10kv from China

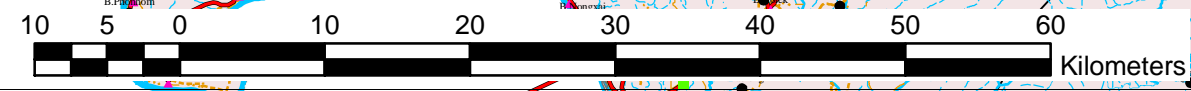


Figure 2 Electrification Plan in Luangnamtha