

添付資料

添付 - 1 : 県別GISマップ..... A - 1

添付 - 2 : PRE-FS対象小水力発電計画概要表及び図面 A - 9

添付 - 3 : 資料リスト A - 53

添付 - 4 : 現地調査写真集..... A - 54

添付 - 5 : DOE/PDIHカウンターパート及び調査団員名簿..... A - 64

添付 - 6 : 実施要員計画表..... A - 67

200 Phongsaly
HH Electrification Ratio
14% (2005) – 67% (2020)

206 Gnot Ou
HH Electrification Ratio
5% (2005) – 50% (2020)

201 Phongsaly
HH Electrification Ratio
33% (2005) – 80% (2020)

204 Samphan
HH Electrification Ratio
6% (2005) – 60% (2020)

205 Bouneua
HH Electrification Ratio
28% (2005) – 80% (2020)

EDL 115kV Extention
to Bouneua
after 2010 (Not PTD 2)

207 Bountai
HH Electrification Ratio
12% (2005) – 100% (2020)

202 May
HH Electrification Ratio
6% (2005) – 40% (2020)

203 Khua
HH Electrification Ratio
12% (2005) – 70% (2020)

Figure 1 Electrification Plan in Phongsaly



Legend

Classified Village

- ▲ Electrified by EDL Grid
- ▲ Electrified by Import Electricity
- ▲ Electrified by Off-grid (Hydro power)
- Electrified by Off-grid (Pico)
- ▲ Electrified by Off-grid (Diesel)
- ★ Electrified by Off-grid (Solar)
- None
- EDL Short Term
- EDL Long Term
- JICA Off-grid Pre-F/S
- Potential site (Village Hydro Class)
- Existing Plan of Pico-hydro and Diesel
- Existing Plan of Solar Power
- Others

Road

- Paved Road
- Street Road
- Improved Unpaved Road
- Unpaved Road
- Temporary Road
- Footpath

115kv Transmission line

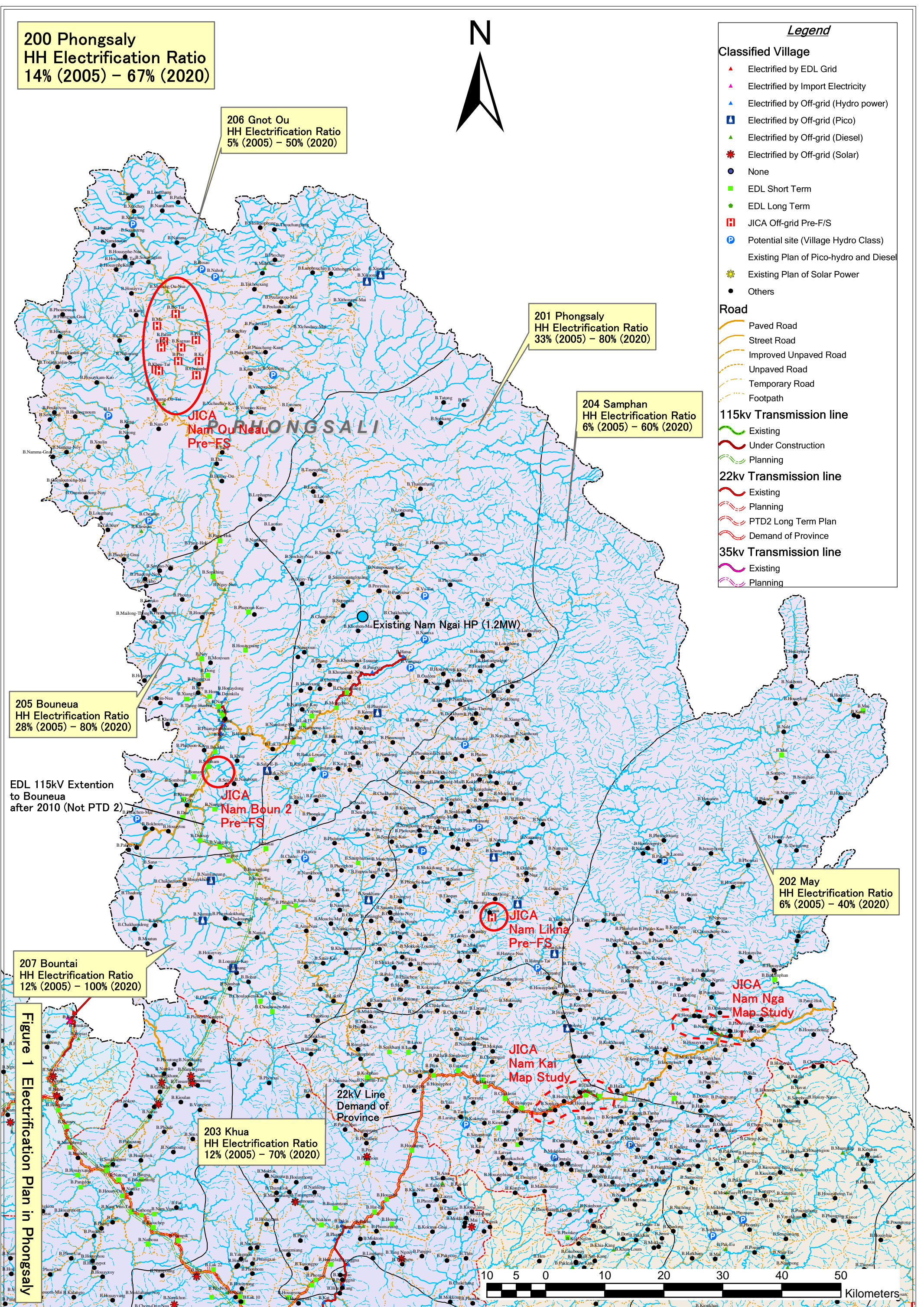
- Existing
- Under Construction
- Planning

22kv Transmission line

- Existing
- Planning
- PTD2 Long Term Plan
- Demand of Province

35kv Transmission line

- Existing
- Planning



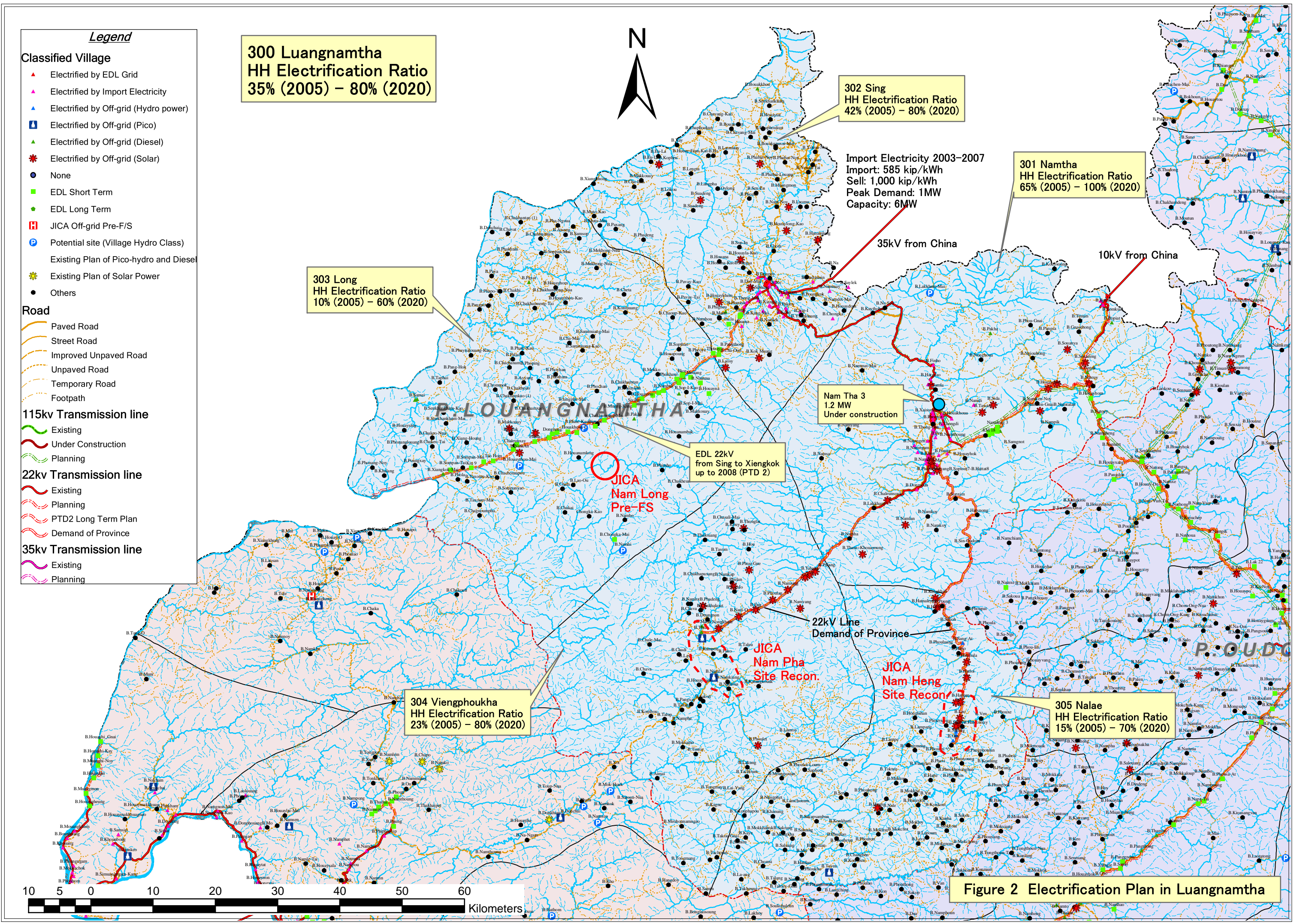


Figure 2 Electrification Plan in Luangnamtha