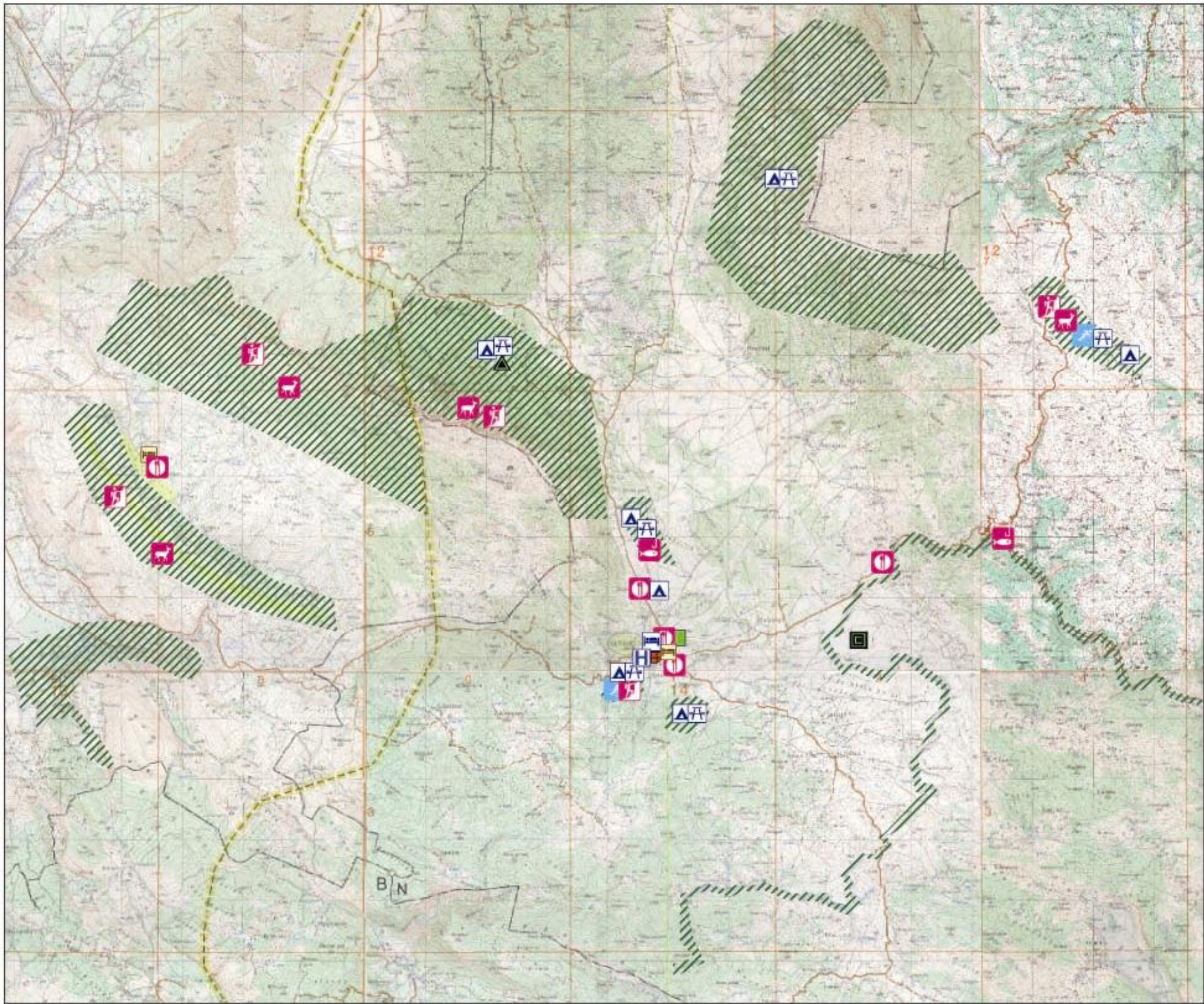


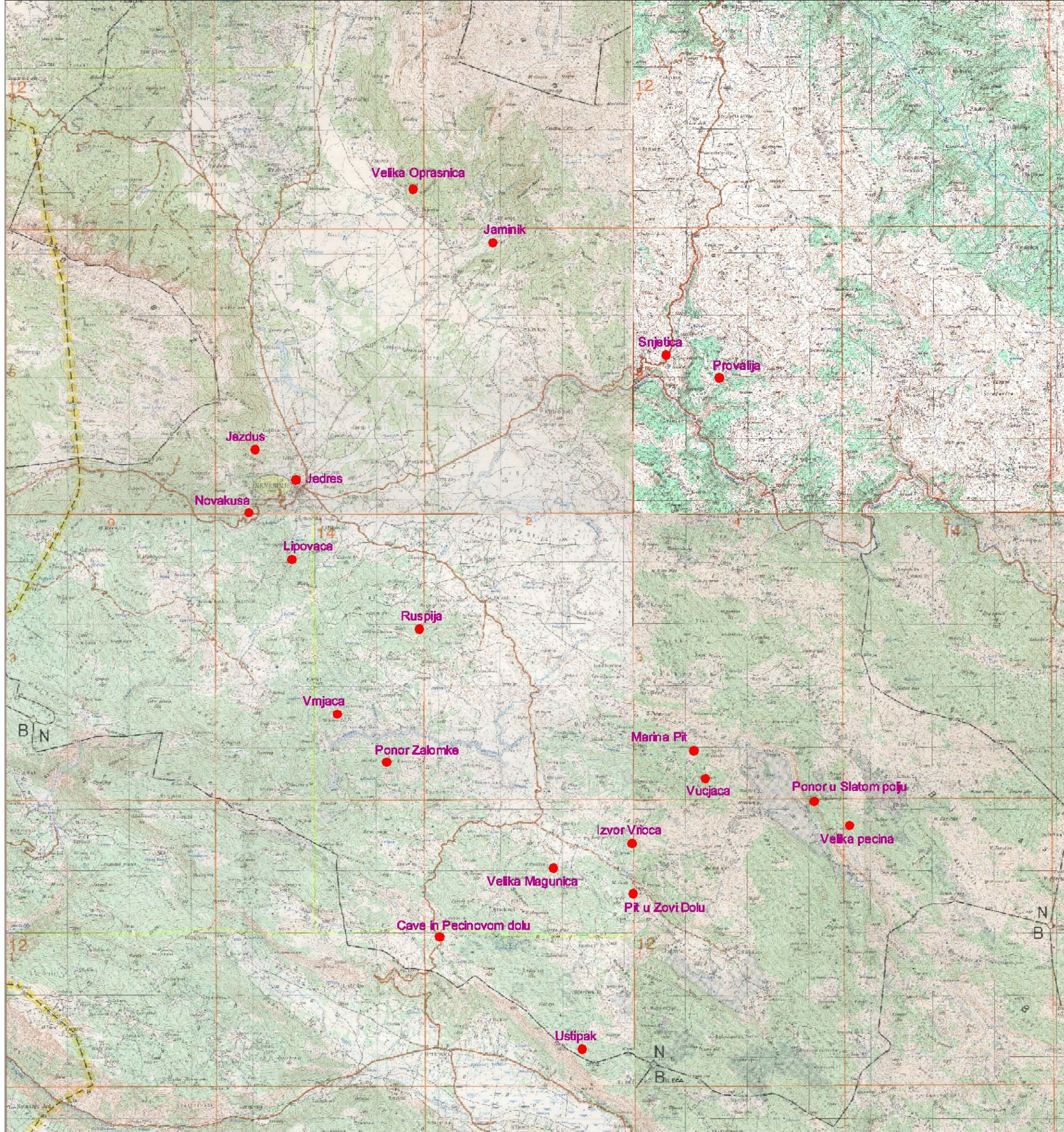
# **ANNEX 1 - 3**



**Legend**

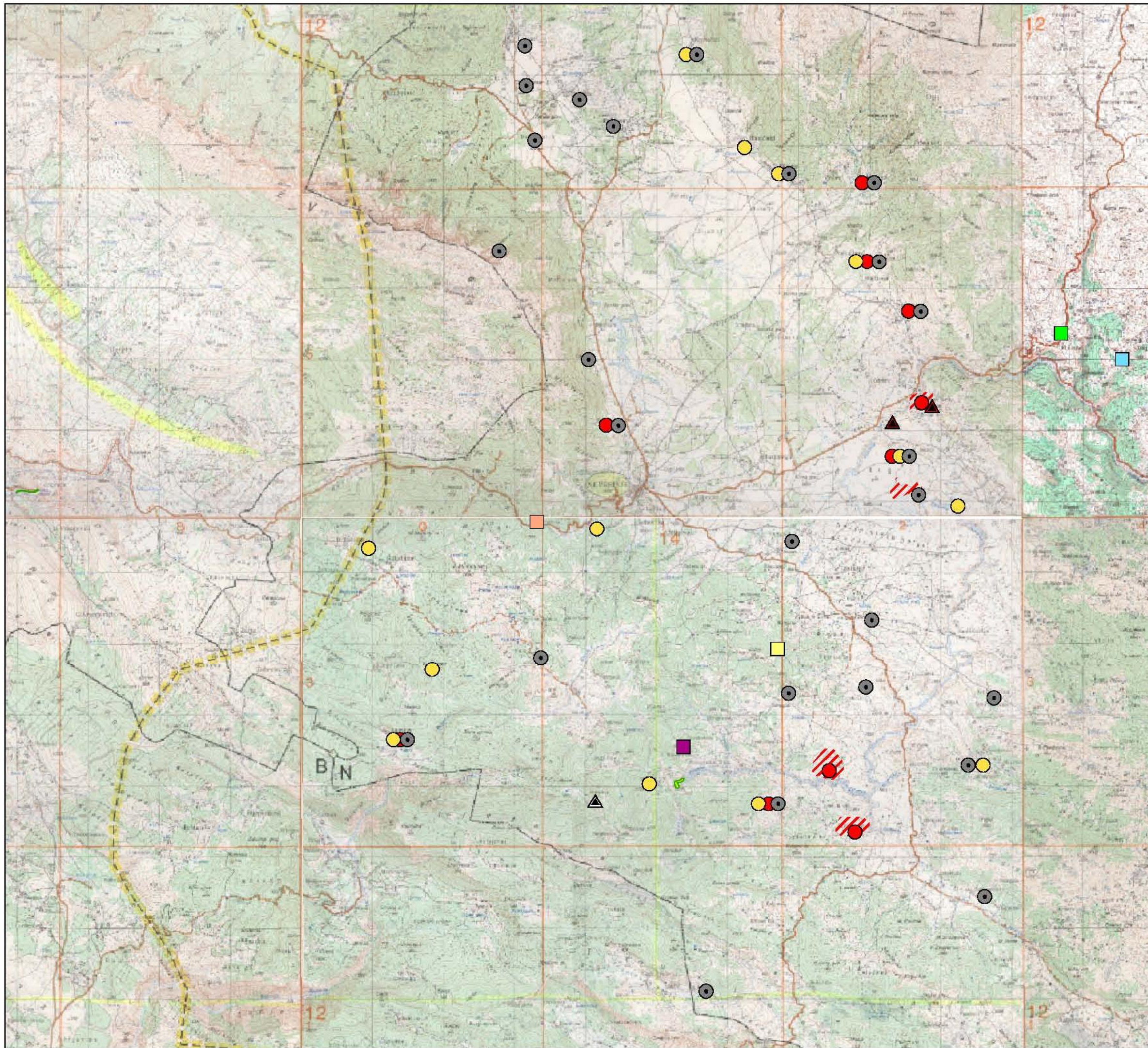
**Tourists map of Nevesinje**

-  Hospital
-  Hotel
-  Vacation area
-  Camping
-  Hunting
-  Motel
-  Mountain-climbing
-  Mountain Lodge
-  Restaurant
-  Fishing
-  Skiing (ski lift)
-  Sport
-  Sports Field
-  Nevesinje Olympics
-  Eco Area



**CAVES  
(Nevesinje, Podvelez, Buna)**

● CAVES



**RARITIES AND BEAUTIES  
UNDER PROTECTION  
(Podvelezje, Blagaj, Nevesinje)**

**Legend**

**MEDIEVAL PERIODS**

- ▲ Medieval town
- Medieval necropolis, Fragments,...

**PRE-HISTORIC PERIOD**

- Tumulus, Fragments,...

**ROMAN EMPIRE**

- ▲ Roman fortress
- Necropolis, Tomstones, Fragments,...
- ▨ Roman Settlement

**Natural Heritage**

**Caves under protection**

- Sjetinica
- Provalija
- Novakusa
- Ruspija
- Vrnjaca

# **ANNEX 1 – 4**

**ANNEX1-4 (I)**  
**TRADE STATISTIC SERBIA & MONTENEGRO**

Agricultural Export Import Statistic 2003  
 Export/import ( statistics from Customs sites)  
 Between Serbia and Montenegro/Bosnia and Hercegovina

Bureau for statistics, Serbia and Montenegro  
 Beograd, Kneza Milosa 20

External trade statistics

January - December 2003

Product	EXPORT		IMPORT	
	Amount in tons	Value in 000 USD	Amount in tons	Value in 000 USD
Live horse except for breeding and slaughter	1	16	-	-
Pigs above 50 kg	12	15	-	-
Chicken up to 185g, local for breeding	0	20	-	-
Hens to 2000g,local	43	103	-	-
Hens above 2000g, local	-	-	27	18
Live animals for human consumption	13	93	-	-
Live animals (the rest)	1	12	0	0
Bacon, fresh, frozen, in salt brine	5	4	-	-
Bacon dried, smoked	8	35	-	-
Pig but, shoulder,dried, smoked	3	7	-	-
Pig abdominal part,salted,smoked	7	21	-	-
Pork, dried, smoked, in salt brine	161	717	37	204
Dried/smoked beef with bones	2	10	-	-
Trout, live	-	-	112	336
Carp, progney	41	201	0	4
Carp, live	-	-	655	1577
Other fish, live	3	7	323	456
Trout, fresh or cooled			180	526

Product	EXPORT		IMPORT	
	Amount in tons	Value in 000 USD	Amount in tons	Value in 000 USD
Trout, frozen	-	-	33	123
Hake, frozen	-	-	25	30
Sea Fish fillet, frozen	-	-	12	21
Sweet water fish meat, fresh/frozen			0	2
Snails except sea snails	282	283	264	249
Milk, cream, non-concetrated	3592	1610	183	42
Mlik, cream, solid	19	37	51	83
Milk for calf	8	41	-	-
Milk, creame sweetened	6	14	-	-
Non aromatised yugort with no fruits	206	133	-	-
Aromatised yugort or fruit added	2	2	-	-
Sour milk, kefir	164	219		
Natural milk content products	2	4	17	23
Butter	5	15	2	4
Milk coatings	133	379	1	2
Fat and oil derived from milk	8	30	-	-
Cheese, melted, except grated or powder.	52	166	-	-
Cheese others	247	666	-	-
Poultry eggs for breeding, etc	62	208	7	24
Poultry eggs in shells	1	2	-	-
Shell-less eggs not suitable for human consumption	-	-	20	101
Natural honey	1	3	-	-
Offals, bladder and salted	21	89	-	-
Corals; Shells; bones etc	3	1	-	-

Product	EXPORT		IMPORT	
	Amount in tons	Value in 000 USD	Amount in tons	Value in 000 USD
Sponges, natural, animal origin etc,	-	-	0	2
Bulbs, tubers, root shoots and the like	9	8	-	-
Bulbs and rhizhoms in vegetation	24	10	-	-
Cuttings, rootstocks, graft branch	45	220	13	8
Seedlings, edible fruits, grafted or non-grafted	476	1211	0	0
Roses, grafted or non-grafted	86	169	-	-
Live plants and others	45	38	-	-
Leaves, branches and grasses for buquets, fresh	-	-	8	1
Leaves, braches and grasses for buquets, dried, coloured	48	1	-	-
Seed potato fresh or cooled	760	206	14	6
Potato fresh or cooled, other	1686	215	2177	388
Tomato fresh or cooled	194	22	10	4
Onion sets, fresh, cooled	39	18	-	-
Onion fresh or cooled, other	39	6	-	-
Garlic fresh or cooled	7	1	-	-
Cabbage, fresh or cooled	52	4	120	9
Green salad heads, fresh, cooled	2	1	-	-
Green salad fresh or cooled	2	1	-	-
Carrot fresh or cooled	15	3	-	-
Red beet fresh or cooled	25	4	-	-
Cucumber, fresh, cooled	108	33	5	1
Peas fresh or cooled	267	88	-	-
Green beans, fresh, cooled	3	4	-	-
Egg plant, fresh, cooled	1	0	-	-



Product	EXPORT		IMPORT	
	Amount in tons	Value in 000 USD	Amount in tons	Value in 000 USD
Edible mushrooms, fresh, cooled	-	-	6	44
Sweet pepper, fresh, cooled	2446	443	1	1
Capsicum family or Pimenta; fresh	58	11	-	-
Potato, frozen	5	7	9	1
Peas, frozen	141	123	37	21
Green beans, frozen	114	79	-	-
Spinach, frozen	19	15	2	2
Sweet corn, grains, frozen	19	17	-	-
Sweet corn,on cob,frozen	3	2	-	-
Carrot , frozen	2	1	-	-
Vegetables frozen and others	47	21	7	61
Mixed vegetables, frozen	286	218	-	-
Capsicum family or Pimenta; conserved	15	10	-	-
Conserved edible mushrooms, unsuitable for human consumption	-	-	93	439
Conserved vegetables unsuitable for human consumption	8	4	-	-
Conserved mixed vegetables unsuitable for human consumption	12	16	-	-
Onion dried	8	23	-	-
Dried edible mushrooms	6	45	27	250
Dried mixed vegetables	402	669	46	105
Peas dried	74	81	1	1
Peas dried and others	2	1	-	-
Ordinary beans dried, for planting	1	3	-	-
Beans dried, for planting and others	2	8	-	-
Almond, shelled or dry	0	1	-	-

Product	EXPORT		IMPORT	
	Amount in tons	Value in 000 USD	Amount in tons	Value in 000 USD
Hazelnut,shelled, fresh or dry	3	9	-	-
Ordinary walnut, shelled, fresh or dry	0	1	2	18
Chestnut, shelled, fresh or dry	-	-	246	172
Nut fruits, fresh, dried and others	0	1	-	-
Banana, fresh	-	-	221	89
Banana and others	-	-	41	13
Palm nut, fresh, dried	1	2	-	-
Dried fig	1	3	-	-
Mandarine, fresh	-	-	10	3
Mandarine, dried	-	-	7	7
Grapes fresh	635	167	-	-
Grapes dried	4	7	-	-
Water melon fresh	2027	111	-	-
Melon fresh	511	23	-	-
Apples (fresh)	3126	422	204	34
Pear fresh	130	38	378	175
Apricot, fresh	97	18	-	-
Sour cherry, fresh	2677	1340	-	-
Peach, fresh	457	66	-	-
Nektarine, fresh	106	23	-	-
Plums, fresh	8189	1538	-	-
Strawberry, fresh	24	11	-	-
Raspberry, fresh	799	788	-	-
Black berry, fresh	23	11	-	-

Product	EXPORT		IMPORT	
	Amount in tons	Value in 000 USD	Amount in tons	Value in 000 USD
Other fresh fruits	18	2	-	-
Straw berry, frozen	64	69	14	59
Raspberry, frozen, Rolend	43	41	15	36
Raspberry, frozen, Grit	23	15	-	-
Raspberry, frozen, Bruh	1	1	-	-
Raspberry, frozen/original	160	135	25	41
Raspberry, frozen/block	-	-	5	5
Raspberry, frozen, others	54	46	-	-
Blackberry frozen, Rolend	25	20	-	-
Raspberry, frozen, Konfitura	9	7	20	22
Raspberry, frozen, Block	10	5	63	28
Raspberry, frozen, others	41	34	30	24
Peach, frozen	99	55	-	-
Sour cherry, without seeds, frozen, Rolend	62	69	-	-
Sour cherry, without seeds, frozen, Block	67	22	-	-
Sour cherry, with seeds, frozen	855	467	-	-
Fruits, frozen	260	109	-	-
Sweet cherry, Short-term conserved, not suitable for consumption	13	6	-	-
Sour cherry, Short-term conserved, not suitable for consumption	6	6	-	-
Strawberry, Short-term conserved, not suitable for consumption	7	9	-	-
Apricot Short-term conserved, not suitable for consumption	23	25	-	-
Fruits, Short-term conserved, not suitable for consumption	414	264	-	-
Apricot, dried	1	5	-	-
Plums, dried	85	34	-	-

Product	EXPORT		IMPORT	
	Amount in tons	Value in 000 USD	Amount in tons	Value in 000 USD
Fruits dried, except those on trade number. 08.01-08.0	20	43	-	-
Arabica coffee, Brazil, unroasted	-	-	25	35
Cofein coffee, roasted	19	43	-	-
Cofeinless coffee, roasted	0	1	-	-
Green tea, unfermented	21	130	-	-
Tea black fermented and others	5	50	-	-
Black pepper, unbroken or unmilled	12	29	-	-
Black pepper, broken or milled	9	56	-	-
Pepper, unbroken or unmilled, dry	0	1	-	-
Pepper, broken or milled, dry	207	501	-	-
Vanilla	1	19	-	-
Cinnamon and cinnamon tree flowers	6	20	-	-
Carnation	0	3	-	-
Mace nut	0	2	-	-
Seed koriander	1	1	-	-
Seed cummin	1	3	-	-
Seed fennel	1	2	-	-
Juniper	50	25	6	10
Ginger	0	1	-	-
Thyme	3	14	-	-
Curry	1	1	-	-
Mixed spices	18	15	-	-
Spices and others	142	167	-	-
Hard wheat seed	580	169	-	-

Product	EXPORT		IMPORT	
	Amount in tons	Value in 000 USD	Amount in tons	Value in 000 USD
Seed wheat and others	914	270	-	-
Wheat and others	5894	613	-	-
Rye, others	0	0	102	20
Barley, seed	1834	504	-	-
Barley, beer	26	3	-	-
Barley, others	4432	483	-	-
Oats, seed	132	40	-	-
Oats, others	246	53	-	-
Seed Corn, hybrid	2511	2623	72	66
Seed corn and others	1586	156	-	-
White corn	46	7	-	-
Yellow corn	53051	6821	-	-
Corn and others	979	140	12	1
Rice, half or completely blanched	16	25	-	-
Rice polished	2	1	-	-
Rice , broken	8	12	-	-
Millet	22	12	-	-
Bird seeds	289	108	-	-
Cereals, others	360	123	-	-
Wheat flour	423	125	324	62
Corn flour	43	21	-	-
Flour of remaining cereals	3	2	-	-
Wheat meal and grits	59	33	-	-
Corn meal and grits	531	135	-	-

Product	EXPORT		IMPORT	
	Amount in tons	Value in 000 USD	Amount in tons	Value in 000 USD
Wheat bales	2	6	-	-
Bales of other cereals	37	25	-	-
Grains or in form of crisps, of other cereals	3	1	-	-
Barlery grains; hulled, pearled	1	0	-	-
Oats grains; hulled, pearled	1	1	-	-
Corn grain ; hulled, pearled	3	2	-	-
Grains of other cereals; hulled, pearled	2	2	-	-
Potato Crisps, granule and paletes	29	42	4	11
Coconut flour	21	35	-	-
Malt, unroasted	5707	1673	-	-
Wheat glucosans	14	8	-	-
Corn glucosans	476	230	-	-
The rest, glucosans	0	1	-	-
Wheat Gluten dried or not	4	6	-	-
Soya grains, inclusive broken	1442	448	412	101
Peanuts; shelled, inclusive broken	7	9	-	-
Flax seed, inclusive broken	2	3	-	-
Rape seed oil, seed inclusive broken	1	0	-	-
Sunflower seed inclusive broken	6	3	107	147
Simsim seed	19	30	-	-
Poppy seed	5	11	-	-
Pumpkin seed	4	13	-	-
Oil seeds inclusive broken	4	11	-	-
Soya flour and grit	1521	559	-	-

Product	EXPORT		IMPORT	
	Amount in tons	Value in 000 USD	Amount in tons	Value in 000 USD
Rape seed, others	5	12	0	1
Alfalfa, seed	150	222	51	103
Clover seed (Trifolium spp.)	27	38	10	19
Rye seed (Lolium multiflorum lam.	14	28	1	3
Fodder crops seed, except rape seed	99	128	30	59
Forage plants seed	1	7	-	-
Vegetable seed	43	363	1	14
Seeds, fruits, spores, for sowing	2	25	0	1
Sweet root	1	2	-	-
Camomile	17	91	0	0
Salvia	0	2	4	5
Mentha	24	61	0	1
Linden flower	0	1	20	55
Lincure root	0	1	10	81
Mallow	3	17	0	1
Pharmaceutical plants, cosmetic, etc	40	230	45	57
Alfalfa flour and bale	118	24	-	-
Livestock rape; Alfalfa, clover	1	3	-	-
Cane, horns, sallow cane, reeds	26	7	31	1
Sorghum for brooms	206	17	-	-
Plant materials for colouring and curring	8	3	-	-
Pig fat, edible	46	48	-	-
Fat of cattle, goats, sheep	36	15	-	-
Fish liver oil and their fractions	0	5	-	-

Product	EXPORT		IMPORT	
	Amount in tons	Value in 000 USD	Amount in tons	Value in 000 USD
Lanolin	2	14	-	-
Soya oil, crude, for industrial use	44	31	-	-
Soya oil, others and its fractions	179	117	-	-
Olive oil, others and its fractions	0	2	-	-
Sunflower oil	21	11	-	-
Sunflower oil, crocus, and others	758	790	-	-
Flax oil and its fractions	0	1	-	-
Corn oil and its fractions	22	13	-	-
Ricinus oil and its fractions	0	1	-	-
Vegetable oil and fats, uncoobustable	39	26	-	-
Vegetable oil and fat, hydrogenised	940	948	0	0
Margarine, others	1285	1546	-	-
Darvyl -oil and fat mixtures	242	294	-	-
Glycerine raw; glicerine water	0	1	-	-
Bee wax, and other insect wax	3	10	6	15
Debris got from making fat material	59	18	-	-
Liver sausages and similar products	1	2	-	-
Sausages, dried	648	1990	-	-
Sausages and similar products	374	963	489	917
Homogenised meat products	114	260	-	-
Liver products	125	415	-	-
Turkey products, conserved	1	3	-	-
Chicken products, conserved	18	45	12	18
Poultry products, conserved	14	48	-	-



Product	EXPORT		IMPORT	
	Amount in tons	Value in 000 USD	Amount in tons	Value in 000 USD
Pork ham, conserved	18	75	2	8
Pork products, conserved, others	165	552	-	-
Beef products, conserved	28	93	-	-
Other meat products and animal products	6	21	-	-
Sardines conserved	1	1	-	-
Mackerel, whole or in pieces, conserved	1	2	-	-
Conserved fish and others	3	11	-	-
Caviar and their alternative	1	1	-	-
Snails, prepared or conserved	25	15	-	-
Aromatised sugar	8	17	-	-
Sucrose chemically pure	2	2	-	-
Sugar in solid form, etc	6	6	-	-
Lactose, lactose syrup, etc	2	3	-	-
Glucose, chemically pure	24	17	-	-
Glucose syrup, without fructose	112	65	-	-
Maltose monohydrate	7	11	-	-
Invert sugar; natural mixed	93	81	-	-
Molasses, others	74	6	-	-
Chewing gum without sugar	18	59	-	-
Candies	1248	2158	0	4
Sugar products without cocoa	104	221	712	646
Shells, core, and other wastes	13	1	-	-
Butter, fat and oil from cocoa	2	11	-	-
Cocoa powder, without sugar addition	107	358	1	3

Product	EXPORT		IMPORT	
	Amount in tons	Value in 000 USD	Amount in tons	Value in 000 USD
Cocoa powder with sugar	0	1	-	-
Cocoa containing products	0	1	8	20
Filled chocolates, "Nestle-Milka"	175	380	-	-
Filled chocolates and others	239	698	1	4
Chocolate with added cereals, hazzlenuts	346	901	12	64
Milk chocolates, Nestle-Milka	20	53	2	4
Milk chocolates other	490	1498	60	89
Food products containing cocoa	2842	8466	194	344
Packaged baby foods	964	1233	-	-
Bakery dough	1198	390	-	-
Sweet extract, others	1	2	-	-
Dietal food products	5	15	-	-
Products of flour, starch and grit	107	263	-	-
Pasta, with eggs, uncooked	517	314	10	8
Pasta, uncooked, unfilled	238	134	2	2
Pasta, filled	1	0	-	-
Pasta, others	146	88	-	-
Kus-kus,etc	1	0	-	-
Tapioka and other starch altenatives	1	13	-	-
Swelled cereal products	49	149	46	28
Food products of non roasted cereals	6	10	2	3
Cereals excepts grain corn	29	85	-	-
Sweet Bisqiuts, waffles and wafer	5304	9869	1783	1683
Sliced, tost bread and similar products	11	13	-	-

Product	EXPORT		IMPORT	
	Amount in tons	Value in 000 USD	Amount in tons	Value in 000 USD
Nafor, paper rice,farm capsule	3378	6024	69	156
Cucumber and gherkin conserved in cheese	255	199	501	579
Capsicum family conserved in cheese	29	39	0	1
Edible mushrooms conserved in vinegar	3	8	-	-
Sweet pepper conserved in vinegar	114	88	114	77
Vegetables, fruits conserved invinegar, etc	134	88	18	12
Tomato whole or in pieces conserved	0	0	4	2
Tomato conserved without vinegar, etc	90	82	285	281
Mushroom conserved without vinegar	-	-	2	32
Potato conserved without vinegar, frozen	17	17	-	-
Cabbage conserved without vinegar, frozen	-	-	26	10
Peas conserved without vinegar, frozen	24	18	-	-
Early beans, conserved without vinegar, frozen	12	8	42	18
Caviare, conserved without vinegar, frozen	1	1	-	-
Vegetables, conserved without vinegar, frozen	34	25	27	19
Potato conserved without vinegar, not frozen	5	17	57	204
Peas conserved without vinegar, not frozen	160	117	364	151
Beans conserved without vinegar, not frozen	81	56	-	-
Caviare conserved without vinegar, not frozen	39	59	1	2
Vegetables, mixed vegetables, conserved, nonfrozen	134	105	82	52
Vegetables, fruits, fruit bark and simillar products, cand...	1	1	-	-
Homogenised products derived from fruits	2	5	-	-
Plum jam	-	-	5	13
Fruit jams	116	156	5	9

Product	EXPORT		IMPORT	
	Amount in tons	Value in 000 USD	Amount in tons	Value in 000 USD
Marmalade	10	16	81	106
Fruit products obtained from cooking	88	52	1	3
Peanuts, conserved	34	68	133	224
Nut fruits, conserved	15	49	11	58
Pineapple, conserved	0	1	-	-
Pear, conserved	1	2	-	-
Apricot, conserved	1	1	-	-
Sour cherry, conserved	21	27	-	-
Peach, conserved	5	5	-	-
Mixed fruits, conserved	0	1	-	-
Banana, coconut , conserved	0	1	-	-
Fruits, conserved	10	17	-	-
Orange juice, frozen	18	13	-	-
Concetrated orange juice	-	-	17	13
Orange juice	740	374	38	22
Concentrated citrus juices	-	-	5	4
Citrus juices etc.	3	1	-	-
Concentrated pineapple juice	-	-	8	6
Pineapple juice etc	71	45	1	1
Tomato juice	18	11	-	-
Concentrated apple juice	5	10	23	27
Concentrat for apple juice	1234	620	21	11
Concentrat for raspberry juice	1	1	-	-
concentrat for sour cherry juice	5	4	-	-

Product	EXPORT		IMPORT	
	Amount in tons	Value in 000 USD	Amount in tons	Value in 000 USD
Concetrates for other juices	48	21	31	26
Raspberry juice etc.	97	55	-	-
Sour cherry juice etc	88	51	2	2
Banana, apricot and peach juices	492	289	0	0
Juices of other fruits and vegetables	4401	2046	10	9
Mixed juices, orange, apple etc	941	537	7	4
Mixed juices and others	1265	763	3	2
Extract,esence, coffee concentrate	0	8	-	-
Darvyl on base of extract, esence	0	1	8	44
Extract,esence, tea concentrate	3	12	-	-
Cikory roasted, and other coffee alternatives	1	1	-	-
Dry yeast for baking	245	525	-	-
Yeast for bakeries	479	252	-	-
Active yeast	4	2	-	-
Inactive yeast	26	17	-	-
Baking powder	37	32	-	-
Soya sauce	-	-	6	6
Kechaup	1032	972	7	6
Tomato sauces and others	1	7	-	-
Mustard flour	118	135	-	-
Spices combined , with pepper base	7	38	-	-
Mixed spices; sauce	1227	1957	1	7
Soups, Sauces, and their darvyl	73	330	0	1
Homogenised food products	152	221	-	-

Product	EXPORT		IMPORT	
	Amount in tons	Value in 000 USD	Amount in tons	Value in 000 USD
Icecream with or without cocoa	512	1294	-	-
Concentrated proteins without milk products	92	93	-	-
Protein concentrates	4	13	-	-
Fruits with citrus base	1	3	-	-
Darvyl for cakes and pudding	64	156	-	-
Dietical foods	60	666	118	1379
Baby foods	0	1	-	-
Chewing gum with no sugar additive	0	1	-	-
Concentrantes for making Cola drinks	0	3	-	-
Powdered juices	7	47	31	20
Other food industry products	351	1571	145	338
Mineral water with no gas	1872	337	18	6
Mineral and ordinary water with gas	11564	3162	351	67
Ice and snow	2252	411	-	-
Coca Cola, Pepsi and others alike	0	0	12	4
Mineral Water, with or without gas	11	7	-	-
Non-alhochol with gas	346	197	-	-
Bottled beer, produced from malt	23056	7003	129	107
Beer in cans, produced from malt	4	3	15	11
Beer pakaged in up to 10 l, produced from malt	107	33	6	5
Beer packed in more than 10 l, produced from malt	1620	299	21	10
Champgne with 8,5% alcohol	26	60	-	-
Table wine	1672	1209	-	-
Quality white wine	988	617	7	21

Product	EXPORT		IMPORT	
	Amount in tons	Value in 000 USD	Amount in tons	Value in 000 USD
Table wine and others	158	145	-	-
Quality white wine, others	1	2	-	-
Quality wines	471	516	8	22
Wine and the rest	3	6	1	1
Vermut and similar wines	4	6	-	-
Fermented drinks	1	1	-	-
Ethely alcohol	169	108	-	-
Vinjak(konjak), Wine brandy	138	451	-	-
Lozova~a and komovica	17	40	-	-
Alcoholic drinks derived from wine	16	36	-	-
Rum and sugarcane brandy	4	8	5	22
Pine brandy	0	1	-	-
Vodka	14	20	-	-
Liqours	41	77	7	33
Brandy, plum, pear and cherry	23	129	-	-
Distilled fruits	1	3	-	-
Alcoholic drinks and others	4	13	-	-
Vine vinegar	27	12	-	-
Vinegar, packaged	400	183	-	-
Bran and residues of corn	213	27	-	-
Bran and residues of wheat	5279	621	-	-
Bran and residues of other cereals	25	3	-	-
Residues from starch production	54	26	-	-
Sugar beet cuttings and residues	13155	1360	-	-

Product	EXPORT		IMPORT	
	Amount in tons	Value in 000 USD	Amount in tons	Value in 000 USD
Oil cakes and other residues	801	227	-	-
Sunflower cake etc	5059	704	-	-
Wild chestnut	7	1	-	-
Dog and cat food at retail	26	10	-	-
Fish food	419	188	-	-
Mixed livestock feeds and poultry concentrates	7822	1847	-	-
Livestock feed enriched with molasses	747	205	-	-
Feed mix	207	163	-	-
Other enriched livestock feeds	560	83	-	-
Tobacco leafy type/oriental type	27	58	-	-
Tobacco leafy type/Virginia	32	33	-	-
Tobacco, leafy type/Berlej	43	80	-	-
Tobacco, partly leafy Virginia		-	466	1297
Tobacco, partly threaded others	13	30	-	-
Tobacco, completely threaded, Virginia	282	210	749	1658
Tobacco, completely threaded, Berlej	1	0	13	55
Tobacco residues	8	3	157	330
Tobacco cigarettes	363	2592	3	50
Tobacco, reconstructed or homogenised	42	73	-	-



## ANNEX 1-4 (II)

### C. EXPORT OF AGR: PRODUCTS FROM CROATIA TO BOSNIA AND HERZEGOVINA

TARIFE	PRODUCT	EXPORT 2003.		
		Tons	USD	%
<b>AGRICULTURE AND FOOD INDUSTRY</b>		<b>2,924,608</b>	<b>768,316,578</b>	
	<b>BOSNIA AND HERZEGOVINA</b>	<b>273,890</b>	<b>233,544,807</b>	<b>100.00</b>
24022090	OTHER CIGARETTES THAT CONTAIN TOBACCO	3,882	62,737,686	26.86
10019099	OTHER SPELT, PLAIN WHEAT AND MASLIN	85,714	14,297,000	6.12
22030001	BEER IN 10 LITRE BOTTLES OR LESS	19,794	9,461,347	4.05
16041319	OTHER SARDELLES, WHOLE OR IN PIECES, BUT NON-MINCED	2,714	6,234,325	2.67
18063100	OTHER PRODUCTS FILLED IN BLOCKS, PLATES OR BARS	1,740	6,206,645	2.66
0401201120	PASTEURIZED MILK AND CREME UP TO 2 LITRE WITH 3%FAT	8,851	4,400,055	1.88
15121991	OTHER; SUNFLOWER OIL	4,419	4,270,059	1.83
12010090	OTHER WHOLEGRAIN SOYBEANS INCLUDING CRACKED	14,149	4,063,359	1.74
2103909030	OTHER SPICES, EX. VEGETA	1,433	4,019,870	1.72
21041010	INSTANT SOUPES INCLUDING MEAT SOUP CUBES	676	3,204,440	1.37
18063210	OTHER NON FILLED PRODUCTS WITH CEREALS, FRUIT IN BLOCKS, PLATES OR BARS	714	3,098,385	1.33
2204213810	OTHER QUALITATIVE WHITE WINES EX.WINES FROM CROATIAN GEOGRAFIC SITE WITH MAXIMUM 13%VOL., OTHER WINES IN 2L CONTAINERS OR LESS	1,114	3,039,363	1.30
19053299	OTHER; WAFFLES AND WAFERS	1,249	3,028,902	1.30
21050099	ICE CREAM WITH 7% FAT OR MORE; OTHER EDIBLE FROZEN PRODUCTS WITH COCOA OR WITHOUT	1,226	2,778,104	1.19
22021000	WATERS, INCLUDING MINERAL AND SODA WATERS, WITH SUGAR OR OTHER SWEETENERS OR AROMAS	5,321	2,713,133	1.16
	<b>TOTAL</b>		<b>133,552,673</b>	<b>57.19</b>

Source: DZS

### IMPORT OF AGR: PRODUCTS FROM BOSNIA AND HERZEGOVINA INTO CROATIA

TARIFE	PRODUCT	IMPORT 2003.		
		Tons	USD	%
<b>AGRICULTURE AND FOOD INDUSTRY</b>		<b>2,156,071</b>	<b>1,255,911,859</b>	
	<b>BOSNIA AND HERZEGOVINA</b>	<b>42,696</b>	<b>26,552,650</b>	<b>100.00</b>
22021000	WATERS, INCLUDING MINERAL AND SODA WATERS, WITH SUGAR OR OTHER SWEETENERS OR AROMAS	7,037	2,141,367	8.06
19053199	OTHER COOKIES AND SIMILAR SWEET PRODUCTS	640	1,312,514	4.94
20079998	OTHER; JAMS, FRUIT JELLIES, MARMELADES, PURRE AND MUSHED FRUITS MADE BY COOKING, WITH OR WITHOUT ADDED SUGAR OR OTHER SWEETENERS	1,302	1,310,132	4.93
07019090	OTHERS; OTHER POTATOE, FRESH OR COOLED	4,979	1,127,125	4.24
22011019	OTHER NATURAL MINERAL WATTERS	5,679	1,089,020	4.10
04069099	OTHER, OTHER CHEESE	111	868,709	3.27
04069087	OTHER CHEESE FROM 52% UP TO 62% FAT WITH WATER IN NONFAT SUBSTANCE	106	839,794	3.16
18069060	OTHER SPREADINGS THAT CONTAIN COCOA	349	826,900	3.11
19053219	OTHER WAFFLES AND WAFERS COATED WITH CHOCOLATE OR OTHER PRODUCTS CONTAINING COCOA	307	796,307	3.00
2106909810	OTHER EX. FLAVOURED AND FRUIT SYRUPS, FOOD PRODUCTS NOT MENTIONED OR INCLUDED IN OTHER PLACES	2,260	728,961	2.75
20079939	OTHER WITH MORE THEN 30% OF SUGAR ,JAMS, FRUIT JELLIES, MARMELADES, PURRE AND MUSHED FRUITS MADE BY COOKING, WITH OR WITHOUT ADDED SUGAR OR OTHER SWEETENERS	667	691,352	2.60
2005907010	MIXED VEGETABLES, EX. AYVAR CONSERVED WITHOUT VINEGAR, NON-FROZEN	312	633,694	2.39
20011000	CONSERVED CUCUMBERS AND GERKINS	678	621,138	2.34
16024110	THIGHS AND THIGH PICES FROM DOMESTIC PIGS	80	583,769	2.20
19053119	OTHER COOKIES, COMPLETELY OR PARTLY COATED WITH CHOCOLATE OR OTHER PRODUCTS THAT CONTAIN COCOA AND TO THOSE SIMILAR PRODUCTS	245	579,150	2.18
	<b>TOTAL</b>		<b>14,149,932</b>	<b>53.29</b>

Source: DZS

## ANNEX 1-4 (III)

### EU BiH EX IM AGR FIGURES

#### EUR15 Imports from Bosnia and Herzegovina

For commodity 24 in Year 2003

TOBACCO AND MANUFACTURED TOBACCO SUBSTITUTES

Measures	Import Value (1000 EURO)	Import Qty (100kg)	Import Supl Unit
Reporters	eur15	eur15	eur15
Partners			
Bosnia and Herzegovina	85,520	439	-

#### EUR15 Imports from Bosnia and Herzegovina

For commodity 22 in Year 2003

BEVERAGES, SPIRITS AND VINEGAR

Measures	Import Value (1000 EURO)	Import Qty (100kg)	Import Supl Unit
Reporters	eur15	eur15	eur15
Partners			
Bosnia and Herzegovina	896,210	14 671	-

#### EUR15 Imports from Bosnia and Herzegovina

For commodity 21 in Year 2003

MISCELLANEOUS EDIBLE PREPARATIONS

Measures	Import Value (1000 EURO)	Import Qty (100kg)	Import Supl Unit
Reporters	eur15	eur15	eur15
Partners			
Bosnia and Herzegovina	124,590	711	-

#### Eur15 and Member States Imports from Bosnia and Herzegovina

For commodity 20 in Year 2003

PREPARATIONS OF VEGETABLES, FRUIT, NUTS OR OTHER PARTS OF PLANTS

Measures	Import Value (1000 EURO)	Import Value (1000 EURC Austria)	Import Value (1000 EURO) France	Import Value (1000 EURO) Germany	Import Value (1000 EURO) Ireland	Import Value (1000 EURO) Italy
Reporters	eur15					
Partners						
Bosnia and Herzegovina	867,050	25,790	25,030	236,550	9,300	219,870

Measures	Import Value (1000 EURO)	Import Value (1000 EURC Netherlands)	Import Value (1000 EURO) Sweden	Import Value (1000 EURO) United Kingdom	Import Qty (100kg) eur15	Import Qty (100kg) Austria
Reporters	Luxembourg					
Partners						
Bosnia and Herzegovina	1,220	9,760	329,680	9,850	8 481	276

Measures	Import Qty (100kg)	Import Qty (100kg)	Import Qty (100kg)	Import Qty (100kg)	Import Qty (100kg)	Import Qty (100kg)
Reporters	France	Germany	Ireland	Italy	Luxembourg	Netherlands
Partners						
Bosnia and Herzegovina	200	3 472	24	519	8	88

Measures	Import Qty (100kg)	Import Qty (100kg)	Import Supl Unit	Import Supl Unit	Import Supl Unit	Import Supl Unit
Reporters	Sweden	United King	eur15	Austria	France	Germany
Partners						
Bosnia and Herzegovina	3 809	85	-	-	-	-

Measures	Import Supl Unit	Import Supl Unit	Import Supl Unit	Import Supl Unit	Import Supl Unit	Import Supl Unit
Reporters	Ireland	Italy	Luxembourg	Netherlands	Sweden	United Kingdom
Partners						
Bosnia and Herzegovina		-	-	-	-	-

Eur15 and Member States Imports from Bosnia and Herzegovina

For commodity 19 in Year 2003

PREPARATIONS OF CEREALS, FLOUR, STARCH OR MILK; PASTRYCOOKS' PRODUCTS

Measures	Import Value (1000 EURO)	Import Value (1000 EURC)	Import Value (1000 EURO)	Import Value (1000 EURO)	Import Value (1000 EURO)	Import Value (1000 EURO)
Reporters	eur15	Austria	Denmark	Germany	Ireland	Netherlands
Partners						
Bosnia and Herzegovina	453,770	88,140	25,210	103,260	1,860	16,340

Measures	Import Value (1000 EURO)	Import Qty (100kg)	Import Qty (100kg)	Import Qty (100kg)	Import Qty (100kg)	Import Qty (100kg)
Reporters	Sweden	eur15	Austria	Denmark	Germany	Ireland
Partners						
Bosnia and Herzegovina	218,960	2 559	419	150	581	15

Measures	Import Qty (100kg)	Import Qty (100kg)	Import Supl Unit	Import Supl Unit	Import Supl Unit	Import Supl Unit
Reporters	Netherlands	Sweden	eur15	Austria	Denmark	Germany
Partners						
Bosnia and Herzegovina	106	1 288	-	-	-	-

Measures	Import Supl Unit	Import Supl Unit	Import Supl Unit
Reporters	Ireland	Netherlands	Sweden
Partners			
Bosnia and Herzegovina	-	-	-

EUR15 Imports from Bosnia and Herzegovina

For commodity 16 in Year 2003

16:PREPARATIONS OF MEAT, OF FISH OR OF CRUSTACEANS, MOLLUSCS OR OTHER AQUATIC INVERTEBRATES

No data available.

EUR15 Imports from Bosnia and Herzegovina

For commodity 12 in Year 2003

OIL SEEDS AND OLEAGINOUS FRUITS; MISCELLANEOUS GRAINS, SEEDS AND FRUIT; INDUSTRIAL OR MEDICINAL PLANTS; STRAW AND FODDER

Measures	Import Value (1000 EURO)	Import Qty (100kg)	Import Supl Unit
Reporters	eur15	eur15	eur15
Partners			
Bosnia and Herzegovina	692,450	1 832	-

EUR15 Imports from Bosnia and Herzegovina

For commodity 11 in Year 2003

PRODUCTS OF THE MILLING INDUSTRY; MALT; STARCHES; INULIN; WHEAT GLUTEN

Measures	Import Value (1000 EURO)	Import Qty (100kg)	Import Supl Unit	
Reporters	eur15	eur15	eur15	
Partners				
Bosnia and Herzegovina	42,190	965		-

EUR15 Imports from Bosnia and Herzegovina

For commodity 10 in Year 2003

CEREALS

Measures	Import Value (1000 EURO)	Import Qty (100kg)	Import Supl Unit	
Reporters	eur15	eur15	eur15	
Partners				
Bosnia and Herzegovina	17,920	284		-

EUR15 Imports from Bosnia and Herzegovina

For commodity 09 in Year 2003

COFFEE, TEA, MATÉ AND SPICES

Measures	Import Value (1000 EURO)	Import Qty (100kg)	Import Supl Unit	
Reporters	eur15	eur15	eur15	
Partners				
Bosnia and Herzegovina	612,580	4 440		

EUR15 Imports from Bosnia and Herzegovina

For commodity 08 in Year 2003

EDIBLE FRUIT AND NUTS; PEEL OF CITRUS FRUITS OR MELONS

Measures	Import Value (1000 EURO)	Import Qty (100kg)	Import Supl Unit	
Reporters	eur15	eur15	eur15	
Partners				
Bosnia and Herzegovina	3 768.020	32 659		-

EUR15 Imports from Bosnia and Herzegovina

For commodity 07 in Year 2003

EDIBLE VEGETABLES AND CERTAIN ROOTS AND TUBERS

Measures	Import Value (1000 EURO)	Import Qty (100kg)	Import Supl Unit	
Reporters	eur15	eur15	eur15	
Partners				
Bosnia and Herzegovina	2 715.420	5 123		-

EUR15 Imports from Bosnia and Herzegovina  
 For commodity 06 in Year 2003  
 LIVE TREES AND OTHER PLANTS; BULBS, ROOTS AND THE LIKE;  
 CUT FLOWERS AND ORNAMENTAL FOLIAGE

Measures	Import Value (1000 EURO)	Import Qty (100kg)	Import Supl Unit	
Reporters	eur15	eur15	eur15	
Partners				
Bosnia and Herzegovina	269,360	2 354		-

EUR15 Imports from Bosnia and Herzegovina  
 For commodity 05 in Year 2003  
 PRODUCTS OF ANIMAL ORIGIN

Measures	Import Value (1000 EURO)	Import Qty (100kg)	Import Supl Unit	
Reporters	eur15	eur15	eur15	
Partners				
Bosnia and Herzegovina	141,190	416		-

EUR15 Imports from Bosnia and Herzegovina  
 For commodity 04 in Year 2003  
 04:DAIRY PRODUCE; BIRDS' EGGS; NATURAL HONEY; EDIBLE PRODUCTS OF  
 ANIMAL ORIGIN, NOT ELSEWHERE SPECIFIED OR INCLUDED  
 No data available.

EUR15 Imports from Bosnia and Herzegovina  
 For commodity 03 in Year 2003  
 FISH AND CRUSTACEANS, MOLLUSCS  
 AND OTHER AQUATIC INVERTEBRATES

Measures	Import Value (1000 EURO)	Import Qty (100kg)	Import Supl Unit	
Reporters	eur15	eur15	eur15	
Partners				
Bosnia and Herzegovina	842,240	1 783		-

EUR15 Imports from Bosnia and Herzegovina  
 For commodity 02 in Year 2003  
 MEAT AND EDIBLE MEAT OFFAL

Measures	Import Value (1000 EURO)	Import Qty (100kg)	Import Supl Unit	
Reporters	eur15	eur15	eur15	
Partners				
Bosnia and Herzegovina	1,460	6		-

EUR15 Imports from Bosnia and Herzegovina  
 For commodity 01 in Year 2003  
 01:LIVE ANIMALS  
 No data available.

# **ANNEX 1 - 5**

## ANNEX 1-5 GIS Database Development

### 5.1 General

Regional planning is always based on spatial information and analysis. Presentation of plan should be accompanied with maps. Geographic Information System (GIS) is the system for such purpose.

JICA Study Team selected ArcGIS (ArcView 8.3 and partially ArcInfo 8.2) system as the main GIS system. All the data files were stored below one folder, and the folder was substitute or mapped as T: drive.

All the data and systems are provided to the counterpart agencies when this study finishes.

Major outputs are shown in “Vol. 5. Appendix 2: A3 maps and drawings”. PDF files of them are saved in the CD of the Final Report.

### 5.2 Base maps

JICA Study Team collected base maps as shown in Table 5.1.

All of these files are in general digital formats, which are available without GIS software or GIS skills. These files should be copied to anybody for planning.

**Table 5.1 Base Maps in General Formats**

Category	Item	Year	Place	File Format
Topographic Map	1:2.500	2003	Centers of Jajce, Blagaj, Počitelj, and Ravno	PDF and Adobe Illustrator
	1:5.000	2003	- Pliva River (from the source to Jajce) - Buna and Bunica River (from the sources to Neretva)	ditto.
	1:25.000	2003	Main part of the study areas	ditto.
		1960~1990?	All the study areas	TIFF
	1:50.000	ditto.	ditto.	JPEG
	1:100.000	ditto.	ditto.	ditto.
1:200.000	ditto.	Most of the study area	TIFF	
Aerial Photo	Ortho-rectified aerial photo (2m resolution)	2003	All the study areas	ditto.
	Original (60cm resolution)	2003	All the study areas	ditto.

## **5.3 Environment of GIS Database System**

### **5.3.1 Software**

JICA Study Team selected ArcGIS (ArcView 8.3) system for basic system.

Geo-database server was not setup because the number of simultaneous accesses is limited. The database was shared by Windows File Sharing.

Additional following systems were supplementary used according to file formats of received data and/or to analysis methods.

- Adobe Acrobat 5.0
- Adobe Illustrator 10.0
- AutoCAD Map 2000i
- Paint Shop Pro 7.0
- Irfan View 3.95
- Microsoft Office XP
- Maruo Editor 4.14

### **5.3.2 Hardware**

One normal Windows XP PC was setup for both of database server and client. Four other PCs and one A3 inkjet printer were setup and connected to the database server via local area network, but not only for GIS operation.

For printing in larger format, JICA Study Team asked the plotters of "Institute of Urbanism, Banja Luka" and "JICA Mapping Project".



**Table 5.2 Features of Hardware for GIS**

Object	Count	Features
PC for database server and client	1	<ul style="list-style-type: none"> <li>- Windows XP Professional</li> <li>- Approximately 2 GHz</li> <li>- 120 GB main HDD</li> <li>- 120 GB sub HDD for backup</li> <li>- 1024 MB RAM</li> <li>- Map the GIS data folder as T: drive</li> </ul>
PCs for client	2	<ul style="list-style-type: none"> <li>- Windows XP Professional</li> <li>- Approximately 2 GHz</li> <li>- 20GB HDD</li> <li>- 512 MB RAM</li> <li>- Map the GIS data folder as T: drive</li> </ul>
Printer	1	<ul style="list-style-type: none"> <li>- A3, color, ink jet</li> <li>- Shared by one of the client PC above</li> </ul>
Network and Internet		<ul style="list-style-type: none"> <li>- 100 Mbps</li> <li>- Wireless Internet shared by one of the client PC above</li> </ul>

### 5.3.3 Human Resources

JICA Study Team was supported by the GIS technical staffs related to the counter part agencies. They had excellent knowledge on regional geography, and skills on GIS software operations. JICA Study Team taught practical know-how on data process for this study as a on-the-job-training.

### 5.3.4 Geographic Coordination System

The local geographic coordinate system is shown in Table 5.3. It is applied whenever new GIS data is prepared, new map is printed or any analysis is done.

**Table 5.3 Local Geographic Coordinate System applied for the Study**

Datum	Bessel_1841
Projection Name	Gauss-Krueger
False Easting	6,500,000 m
False Northing	0 m
Central Meridian	18 Degree E
Scale Factor	0.9999
Latitude of Origin	0

Source: J.P. Geodetski Zavod BiH, and JICA Mapping Study, 2003

However, received data were saved into the GIS database server as it is, without converting their geographic coordinate system. In order to use them in the local geographic coordinate system in ArcGIS system, the spatial references were setup to each of them.

## **5.4 Collected Data**

JICA headquarter offered the outputs of “The Study on Establishing Digital Topographic Maps for Bosnia And Herzegovina”. It consists of

- Aerial photo (60cm resolution taken in 2003),
- Ortho-rectified aerial photo (2m resolution developed from the aerial photo above),
- Digitized vector data (digitized on the aerial photo above and Topographic maps 1:25,000 published in the former Yugoslavia period),
- Topographic maps 1:25.000 (2003 and/or published in the former Yugoslavia), and
- Topographic maps 1:2,500 and 1:5,000 (2003) for selected area

JICA Study Team collected other data such as

- Topographic maps 1:50.000, 1:100.000 and 1:200.000 published in the former Yugoslavia period,
- Land cover data (CORINE project, EEA, 2000),
- Land resources (“Inventory of Post-War Situation of Land Resources in Bosnia and Herzegovina” project, FAO, 2003),
- Mine contamination map (Bosnia and Herzegovina Mine Action Centre, 2004)
- Physical Plan of Bosnia and Herzegovina, 1981 to 2000 (Bosnia and Herzegovina of Former Yugoslavia, 1981)

The full data list is shown in Table 5.4.

## **5.5 Developed Database**

JICA Study Team developed a GIS database from the collected data above, by combination of many methods such as literature research, field survey, digitizing, correcting errors, clipping, and 3D analysis.

The established database is consists of

- Analysis result (ecological zoning)
- Base map (municipality boundary, country boundary, latitude and longitude, road, railway, air port, river and lake, aerial photo, topographic map, etc.)
- 3D data (contour line, Digital Terrain Model, hill shade and slope)

- JICA project (locations related to Pilot Projects)
- Land cover
- Projection
- Satellite image

The full data list is shown in Table 5.4.

**Table 5.4 Developed GIS Database (Confidential data are excluded from this table)**  
**Please substitute (or map) the root directory of the GIS data folder as T drive before using ArcMap file**

Folders	Explanation	Domain	Data Source	Data Year	Geometry	Format
T:\	Data related GIS work	----	----	----	----	----
collected_data	Collected Data	----	----	----	----	----
031127_map_50k_image	Topographic Map 1:50000	Study area	Vojnogeografski institut	1960-1990 ?	raster	JPEG
031128_NEAP	National Environmental Action Plan	BiH	NEAP	2003	raster	JPEG, PDF
031128_PASCO_index_for_Eco_Tourism	Map index and layer definition of 1:25.000 maps of JICA Mapping Team	BiH	JICA Mapping Team	2003	raster	PDF
031201_PASCO_map_index_and_aerial_photo_center	Index of aerial photo	Study area	JICA Mapping Team	2003	point	Text
031204_Country_boundary	Country boundary in 1998 (Error in Serbia and Montenegro)	World	ESRI	1998	polygon	shapefile
031205_gisdata d.o.o	jpg maps of BiH	BiH	GISData d.o.o.	2003	raster	JPEG
031225 Inova d.o.o	Company profile etc.	BiH	INOVA d.o.o.	2003	----	PDF
040114_land_resource_FAO_200k	CD from "Inventory of Post-War Situation of Land Resources in Bosnia and Herzegovina", FAO	BiH	FAO	2003	polygon	shapefile
040117_map_100k_image	Topographic map 1:100000, bmp	Study area	Vojnogeografski institut	1960-1990 ?	raster	Bitmap
040127 BiH Geographic Atlas	Index and cover pages of BiH Geographic Atlas	BiH	J.P. Geodetski Zavod BiH	1998	----	----
040129_Mostar_southeast_boundary	Sub zone boundary in South-East-Mostar municipality, 1:25.000	South-east municipality Mostar	South-east Mostar municipality	2004	raster	TIFF
040130_CORINE_EU_100m	CORINE land cover in 100m grid	Europe	EEA	2000	raster	BIL
040200_subcontract_env	Output of environmental survey by JICA Study Team's sub contract	Study area	Sarajevo Univ., etc.	2004	----	----
040113_biology	Biology part	Study area	Faculty of Science	2004	----	----
040113_geology	Geology part	Study area	Faculty of Agriculture	2004	----	----
JAPAN 2	Map of geology part	Study area	Faculty of Agriculture	2004	polygon	DWG
040300_IOU	Output of tourism resource survey by JICA Study Team's sub contract	Study area	Institute of Urbanism, Banja Luka	2004	----	----
20040319	Version 19, March, 2004	Study area	ditto.	2004	----	----
Fotos	Photo images	Study area	ditto.	2004	----	----
Jajce_Sipovo_Jezero-GIS	GIS data for Pliva region	Study area	ditto.	2004	----	----
Nevesinje-GIS	GIS data for Velez region	Study area	ditto.	2004	----	----
output map	Map outputs in PDF format	Study area	ditto.	2004	----	----
Water Quality	Water quality data (Reports and WQ samples)	Study area	ditto.	2004	----	----
20040512	Version 12, May, 2004	Study area	ditto.	2004	----	----
dwg	Updated DWG	Study area	ditto.	2004	----	----
jsj novo	Updated GIS data for Pliva region	Study area	ditto.	2004	----	----
nevesinj_buna_podvelez_novo	Updated GIS data for Velez region	Study area	ditto.	2004	----	----
questionnaire	Household surveys and local authorities	Study area	ditto.	2004	----	----
040422_map_250k_image	Topographic map 1:250.000	BiH	Freytag & berndt	2004	raster	JPEG
040518_CORINE_MOE	Data CD of "Implementation of CORINE Land Cover data base in Bosnia-Herzegovina and FYROM" (Phare Programme, Contract no. 98-0144.00)	BiH	EEA	2000	polygon	ArcInfo Interchange
040530_JICA_Study_Team_Watershed	Watershed boundary	Study area	JICA Study Team	2004	raster	TIFF
040827_IOU_Protection_of_Nature_from_Physical_Plan_RS	Protection of Nature from Physical Plan RS	RS	Institute of Urbanism, Banja Luka	2004	vector	DWG

Folders	Explanation	Domain	Data Source	Data Year	Geometry	Format
T:\	Data related GIS work	----	----	----	----	----
collected_data	Collected Data	----	----	----	----	----
040903_BanjaLuka_Geology_map	Geological map 1:100.000 (Jajce)	Jajce	Geoinzenjering, Institut za geologiju, Sarajevo	1975	raster	TIFF
040906_PhysicalPlanvelosic_physical_plan_1981_2000_bih	Physical Plan of BiH	BiH	Former Yugoslavia	1981	raster	TIFF
040910_SipovoConservation_SipovoForestry	Conservation of Sipovo	Sipovo	Public Enterprise of Forestry, Sipovo	2004	----	VCD
041011_IOU-Second_phase	Output of tourism resource survey (second phase) by JICA Study Team's sub contract	Study area	Institute of Urbanism, Banja Luka	2004	----	DOC
041111_BHMAC_Mine_Map	Mine situation map	Study area	BH MAC	2004	raster	TIFF
041112 National Monument BiH	National monuments & Regulations	BiH	BiH Commission to Preserve National Monuments	2004	----	PPT
PASCO_2500&5000_JICA_2003	Topographic maps 1:2.500 and 1:5.000	Selected area in study area	JICA Mapping Team	2003	----	PDF and Adobe Illustrator 10
lgd	Legend	----	JICA Mapping Team	2003	----	Adobe Illustrator 10
PASCO_25k_Adobe_Illustrator	Topographic maps 1:25.000	Selected area in study area	JICA Mapping Team	2003	----	PDF and Adobe Illustrator 10
Legend	Legend	----	JICA Mapping Team	2003	----	PDF and Adobe Illustrator 10
PASCO_25k_gis	GIS data for topographic maps 1:25.000	Study area	JICA Mapping Team	2003	point, polyline and polygon	DXF and Coverages
PASCO_25k_image	Topographic maps 1:25.000	Study area	Vojnogeografski institut	1960-1990 ?	raster	TIFF
sa1	for Pliva River North Study Area	Pliva	Vojnogeografski institut	1960-1990 ?	raster	TIFF
sa2	for Mount Velez South Study Area	Velez	Vojnogeografski institut	1960-1990 ?	raster	TIFF
PASCO_aerial_photo	Aerial Photo (resolution = approximately 60cm)	Study area	JICA Mapping Team	2003	raster	TIFF
ESRI License Info	License Information on ArcGIS 8.3	----	ESRI	2004	----	----
gis	Developed GIS database	----	JICA Study Team	2004	----	----
analysis	Analysis result by JICA Study Team	Study area	JICA Study Team	2004	----	----
env_zone_v2	Ecological zoning (draft version 2)	Study area	JICA Study Team	2004	polygon	shapefile
env_zone_v3	Ecological zoning (draft version 2)	Study area	JICA Study Team	2004	polygon	shapefile
env_zone_v4	Ecological zoning (final)	Study area	JICA Study Team	2004	polygon	shapefile
basemap	Base map database	----	JICA Study Team	2004	----	----
aerial_photo_2m	Ortho-rectified aerial photo (2m resolution)	Study area	JICA Mapping Team	2003	raster	TIFF
AirPort	Air port	Study area	JICA Mapping Team	2003	polygon	shapefile
country	"Country boundary (Use LYR file instead of shapefile)"	World		2001	polygon	lyr
existing_tourism_resouce	Existing tourism resources	Study area	Institute of Urbanism, Banja Luka	2004	point	shapefile
latlong	Latitude and longitude (every 15 minutes)	Balkan	JICA Study Team	2003	polyline	shapefile
map_2500&5000_JICA_2003	Topographic maps 1:2.500 and 1:5.000	Selected area in study area	JICA Mapping Team	2004	raster	PNG
map_index_k2.5_k5	Index of topographic map 1:2.500 and 1:5.000	Selected area in study area	JICA Study Team	2004	polygon	shapefile
map_index_k25	Index of topographic map 1:25.000	BiH	JICA Mapping Team	2004	polygon	Coverages and shapefile
map_index_k50	Index of topographic map 1:50.000	Study area	Unknown	2003	raster	TIFF
map_k100	Topographic maps 1:100.000	Study area	Vojnogeografski institut, etc.	1960-1990 ?	raster	JPEG

Folders	Explanation	Domain	Data Source	Data Year	Geometry	Format
T:\	Data related GIS work	----	----	----	----	----
collected_data	Collected Data	----	----	----	----	----
map_k200	Topographic maps 1:200.000	Study area	Vojnogeografski institut, etc.	1960-1990 ?	raster	TIFF
map_k25	Topographic maps 1:25.000	Study area	JICA Mapping Team	2004	raster	PNG
map_k250	Topographic maps 1:250.000	Study area		2003	raster	JPEG
map_k50	Topographic maps 1:50.000 for the study area, and draft municipality boundary	Study area	Vojnogeografski institute (Draft municipality boundary from counterpart agency in 2003)	1960-1990 ?	raster	JPEG
mine	Mine situation map	Study area	BH MAC	2004, Oct	raster	TIFF
municipality	Municipality boundary of the study area	Study area	Institute of Urbanism, Banja Luka, and Local Municipalities	2004	polygon	shapefile
placename	Landmarks	Study area	JICA Study Team	2004	point and polyline	shapefile
railway	Railway and railway facilities	Study area	JICA Mapping Team	2004	polyline and polygon	shapefile
road	Road and national road numbers	Study area	JICA Mapping Team	2004	polyline	shapefile
tm_6_photo_center	Index of aerial photo	Study area	JICA Mapping Team	2003	point	shapefile
waterbody	Water body (river, canal, lake, pond, etc.)	Study area	JICA Mapping Team	2004	polyline and polygon	shapefile
watershed	Watershed (draft zoning analysis unit)	Study area	JICA Mapping Team	2004	polygon	shapefile
dtm	Digital Terrain Model	----	----	----	----	----
25m_grid	DTM, hillshade and slope in 25 m grid	Study area	JICA Study Team	2004	raster	grid
5m_grid	Hillshade in 5m grid	Selected area in study area	JICA Study Team	2004	raster	grid
contour	Contour line	Study area	JICA Study Team	2004	polyline	shapefile
DTEDRO_30sec	DTM in 30 arc second grid	BiH	Geo Community	2003	raster	grid
JICA_project	Locations related to Pilot Projects	Study area	JICA Study Team	2004	point, polyline and polygon	shapefile
landcover	Land cover	----	----	----	----	----
CORINE	CORINE land cover in 100m grid	Europe	EEA	2002	raster	BIL
Vector	CORINE land cover (vector, clipped by the boundary of the study area)	Study area	EEA	2000	polygon	shapefile
layout	Parts for layout	----	----	----	----	----
logo	Image files (BiH national flag and JICA)	----	JICA Study Team	2003	raster	TIFF, GIF
null_data	Null shape file for legend spacing	----	JICA Study Team	2003	polygon	shapefile
map_document	ESRI ArcMap Document (created by ArcView 8.2)	----	JICA Study Team	2004	----	ESRI ArcMap
20040330_aerophoto_index_a3	Index of Original Aerial Photo, JICA, 2003	Study area	JICA Study Team	2004	----	ESRI ArcMap
20040524_50k_base_map	Merged 1:50.000 Maps (A0 format)	Study area	JICA Study Team	2004	----	ESRI ArcMap
20040527_Artificial	Location of Artificial Surfaces	Study area	JICA Study Team	2004	----	ESRI ArcMap
20040602_DTM_25mgrid	Elevation, Slope and Hill shade	Study area	JICA Study Team	2004	----	ESRI ArcMap
20040605_municipality_boundary_A3	Municipality Boundary	Study area	JICA Study Team	2004	----	ESRI ArcMap
20040605_Rail&Airport	Railway and Air Port	Study area	JICA Study Team	2004	----	ESRI ArcMap
20040605_Waterbody	Water body	Study area	JICA Study Team	2004	----	ESRI ArcMap
20040608_Watershed	Watershed (Zoning Analysis Unit)	Study area	JICA Study Team	2004	----	ESRI ArcMap
20040622_env_thematic_v2	Environment Thematic Maps (Elevation, Slope, Forest, Road, Water Surface)	Study area	JICA Study Team	2004	----	ESRI ArcMap
20040713_brouchure_v3	Maps for Brochure	Study area	JICA Study Team	2004	----	ESRI ArcMap

Folders	Explanation	Domain	Data Source	Data Year	Geometry	Format
T:\	Data related GIS work	----	----	----	----	----
collected_data	Collected Data	----	----	----	----	----
20040903_aerophoto	Aerial Photo with Municipality Boundary for Printing out in 1:27.000	Study area	JICA Study Team	2004	----	ESRI ArcMap
20040903_corine_banja_luka	Land Cover of Banja Luka	Banja Luka	JICA Study Team	2004	----	ESRI ArcMap
20040903_geology_map	Geology Map of Jajce, 1:100.000 (Geology Institute, 1980)	Study area	JICA Study Team	2004	----	ESRI ArcMap
20040903_map_index	Map Index of 1:25.000, 1:5.000 and 1:2.500	Study area	JICA Study Team	2004	----	ESRI ArcMap
20040908_map_conversion_tiff2pdf	Format Conversion from TIFF to PDF	Study area	JICA Study Team	2004	----	ESRI ArcMap
20040910_map_print_with_municipality_boundary	Base map with Municipality Boundary for Printing out in 1:27.000 and 1:37.000	Study area	JICA Study Team	2004	----	ESRI ArcMap
20040927_study_area	Base map for Report in A3 format (Color)	Study area	JICA Study Team	2004	----	ESRI ArcMap
20041018_aerial_photo	Aerial Photo	Study area	JICA Study Team	2004	----	ESRI ArcMap
20041113_basemap_100k&200k	Base map in 1:100.000 (50 cm x 50 cm)	Study area	JICA Study Team	2004	----	ESRI ArcMap
20041115_env_zone_v4	Proposed Ecological Zones	Study area	JICA Study Team	2004	----	ESRI ArcMap
20041118_pilot_project	"Locations related to Pilot Projects Sample map related to Pilot Projects"		JICA Study Team	2004	----	ESRI ArcMap
20041125_existing_tourism_resources	Cultural Historical Heritage	Study area	JICA Study Team	2004	----	ESRI ArcMap
20041125_mine	Sample of Mine Contamination Map	Study area	JICA Study Team	2004	----	ESRI ArcMap
20041126_basemap_a3_v4	Base map for Report in A3 format (B/W)	Study area	JICA Study Team	2004	----	ESRI ArcMap
projection	Coordinate system for ArcGIS system	----	----	----	----	----
Bessel 1841.prj	Projection for Bessel, 1841	Europe	----	2002	----	ESRI PRJ
CORINE.prj	Projection for CORINE land cover data of BiH in vector format of (EEA, 2000)	BiH	JICA Study Team	2004	----	ESRI PRJ
TM_Bosnia_Herzegovina.prj	Local projection for BiH (False easting = 500.000)	BiH	JICA Study Team	2003	----	ESRI PRJ
TM_Bosnia_Herzegovina_25k.prj	Local projection for BiH (False easting = 6.500.000)	BiH	JICA Study Team	2003	----	ESRI PRJ
satellite	Satellite Image	----	----	----	----	----
landsat_28.5	Ortho-rectified Landsat thematic mapper mosaics (resolution = 28.5 m)	BiH	Landsat	2003	raster	SID
tools	Tools	----	----	----	----	----
20011229_xtools_for_ArcGIS_8.x	Xtools version 3.0 for ArcMap 8.1	----	Unknown	2001	----	----
20031014_longitude_and_latitude	Avenue script creating longitude and latitude polyline shapefile	BiH	JICA Study Team	2003	----	Avenue
20031125_map_index_k25	Visual Basic for ArcMap creating index of 1:25.000 maps	BiH	JICA Study Team	2003	----	VB for ArcMap
Batch	MS-DOS batch files	----	JICA Study Team	2004	----	Batch
Working	Intermediate data for work	----	JICA Study Team	2004	----	----
instructions	Instruction for data processing	----	JICA Study Team	2004	----	DOC

