

JAPAN INTERNATIONAL COOPERATION AGENCY (JICA)
NATIONAL DEVELOPMENT PLANNING AGENCY (BAPPENAS)
PROVINCIAL GOVERNMENT OF NANGGROE ACEH DARUSSALAM

THE STUDY
ON
THE URGENT REHABILITATION AND RECONSTRUCTION SUPPORT PROGRAM
FOR
ACEH PROVINCE AND AFFECTED AREAS
IN NORTH SUMATRA
(URGENT REHABILITATION AND RECONSTRUCTION PLAN FOR BANDA ACEH CITY)
IN THE REPUBLIC OF INDONESIA
FINAL REPORT (1)

VOLUME IV : DATA BOOK (ARRIS: MAPS FOR PLANNING)

SEPTEMBER 2005

N I P P O N K O E I C O . , L T D .
Y A C H I Y O E N G I N E E R I N G C O . , L T D .
P A S C O C O R P O R A T I O N

LIST OF REPORTS

VOLUME I : EXECUTIVE SUMMARY

VOLUME II : MAIN REPORT

VOLUME III : APPENDICIES

VOLUME IV : DATA BOOK

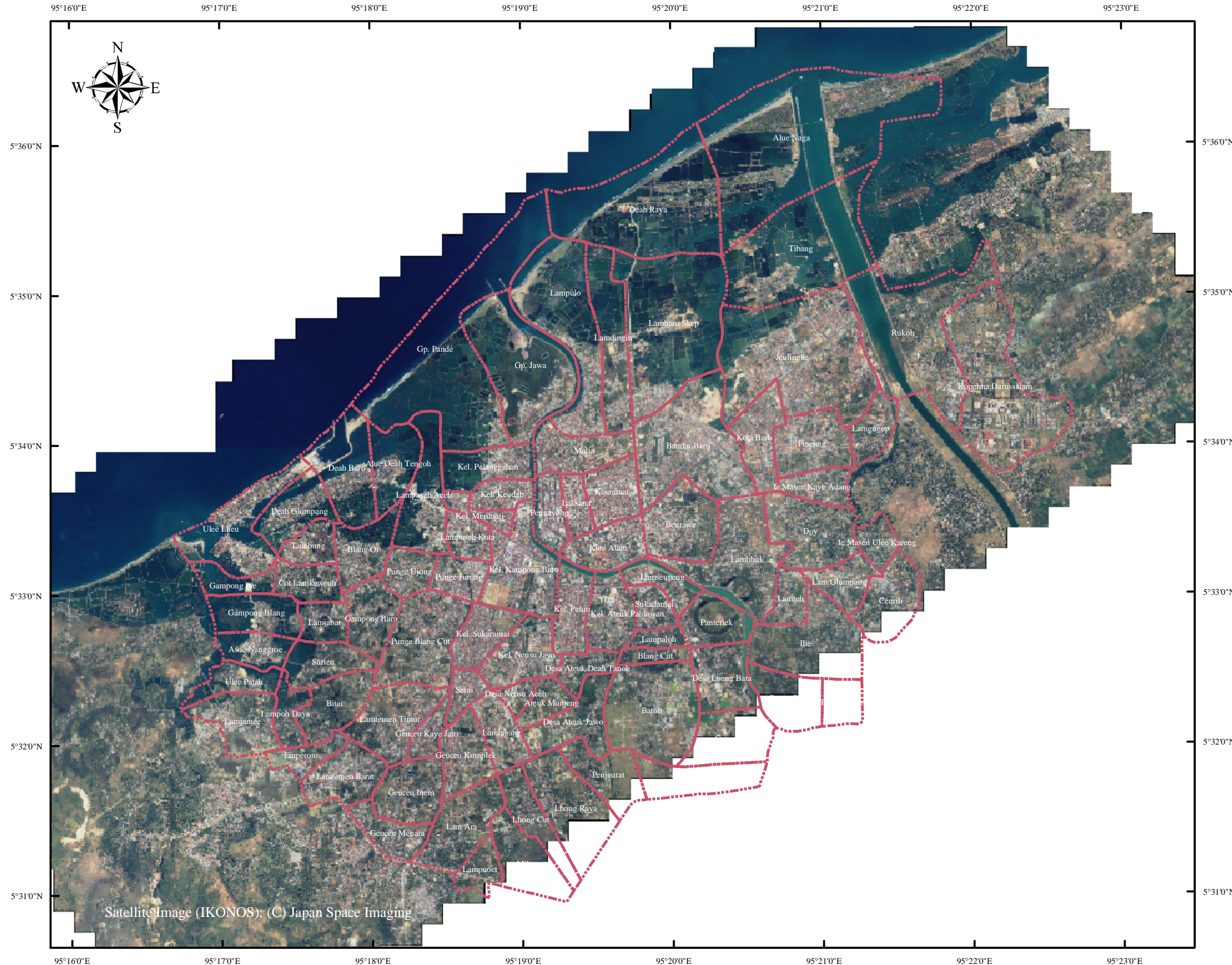
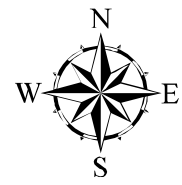
List of Maps

Map Reference ID	Map Title	Page
IK-0001	Pre-Tsunami Satellite Imagery of Banda Aceh (As of June 18, 2004)	1-1
IK-0002	Post-Tsunami Satellite Imagery of Banda Aceh (As of Dec. 29, 2004 and Jan. 29, 2005)	1-2
DA-0001	Tsunami Damage Assessment Map (Maximum Tsunami Water Height)	1-3
DA-0002	Tsunami Damage Assessment Map (Tsunami Water Flow)	1-4
DA-0003	Tsunami Damage Assessment Map (Buildings)	1-5
DA-0004	Tsunami Damage Assessment Map (Electricity Supply)	1-6
DA-0005	Tsunami Damage Assessment Map (Drainage System Integrity)	1-7
DA-0006	Tsunami Damage Assessment Map (Telephone Services)	1-8
DA-0007	Tsunami Damage Assessment Map (Roads and Bridges)	1-9
DA-0008	Tsunami Damage Assessment Map (Demography as of April 12, 2005)	1-10
HP-0001	Hazard Potential Map (Earthquake; Liquefaction)	1-11
HP-0002	Hazard Potential Map (Tsunami ; Inundation)	1-12
HP-0003	Hazard Potential Map (Flood; Drainage)	1-13
HP-0004	Hazard Potential Map (Fire Spreading)	1-14
HP-0005	Hazard Potential Map (Escaping Activity)	1-15
HP-0006	Topographic Zoning Map	1-16
CP-0001	Post-Tsunami Landuse Map (Actual Condition)	1-17
CP-0002	Post-Tsunami Vacancies in Banda Aceh	1-18
TR-0001	Road Classification	1-19
TR-0002	Number of Road Lanes	1-20
TR-0003	Width of Roads	1-21
TR-0004	Damage Rate of City Roads by Kecamatan	1-22
TR-0005	Damage Rate of Streets by Kecamatan	1-23
ED-0001	Tsunami Damage Map for Elementary School	1-24
ED-0002	Tsunami Damage Map for Junior High School	1-25
ED-0003	Tsunami Damage Map for Senior High School	1-26
DM-1001	Disaster Management Resource Plan and Evacuation/Relief Plan	2-1
CP-1001	Banda Aceh City Plan Concept	2-2
CP-1002	Landuse Plan for Banda Aceh City	2-3
CP-1003	Estimated Population Increase (by Desa) from 2005 to 2009	2-4
TR-1001	Banda Aceh Road Network Framework Plan	2-5
ED-1001	Map for Elementary School Plan	2-6
ED-1002	Map for Junior High School Plan	2-7
HM-1001	Map for Health Center and Sub-Health Center Plan	2-8
WS-1001	Improved Water Distribution Network based on Water Demand in 2009	2-9
ML-1001	Location on Case Study for Micro Landuse Plans	2-10
ML-1002	Case Study for Landuse Plan in Syiah Kuala (Option 1)	2-11
ML-1003	Case Study for Landuse Plan in Syiah Kuala (Option 2)	2-12
ML-1004	Case Study for Landuse Plan in Ulele	2-13
ML-1005	Case Study for Landuse Plan in Meraxa	2-14
ML-1006	Case Study for Landuse Plan in Kuta Alam	2-15

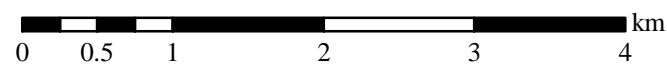
Map Reference ID: IK-0001

Legend

Desa Boundary



Satellite Image (IKONOS): (C) Japan Space Imaging



Map Information:
Projection: UTM Zone 46N (WGS 1984)

JICA Study Team

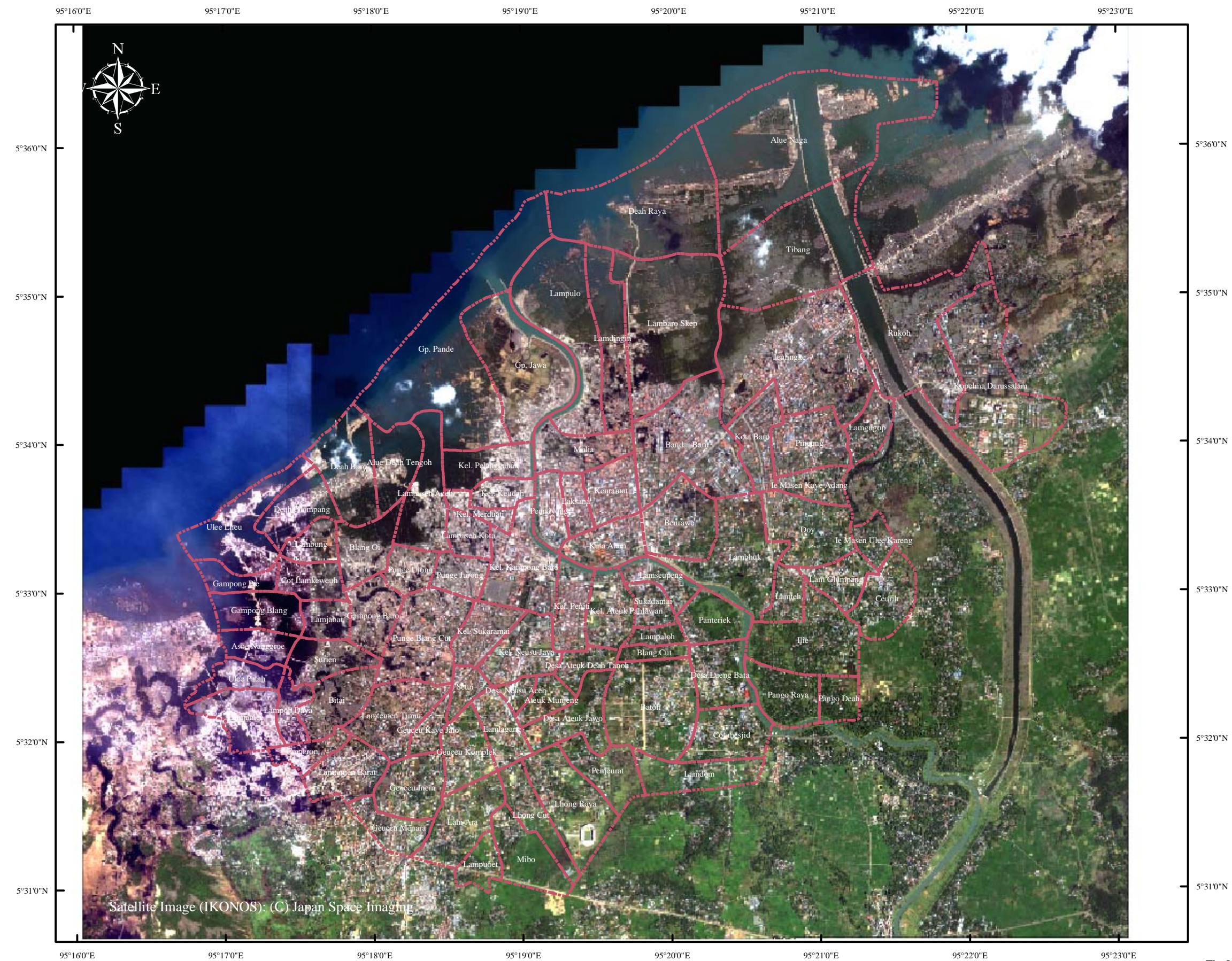
The Study
on
The Urgent Rehabilitation and Reconstruction Support Program
for
Aceh Province and Affected Areas in North Sumatra
(Urgent Rehabilitation and Reconstruction Plan for Banda Aceh City)
in
The Republic of Indonesia

Pre-Tsunami Satellite Imagery of Banda Aceh
(As of June 18, 2004)

Map Reference ID: IK-0002

Legend

Desa Boundary



Satellite Image (IKONOS): (C) Japan Space Imaging

Map Information:
Projection: UTM Zone 46N (WGS 1984)

JICA Study Team

The Study
on
The Urgent Rehabilitation and Reconstruction Support Program
for
Aceh Province and Affected Areas in North Sumatra
(Urgent Rehabilitation and Reconstruction Plan for Banda Aceh City)
in
The Republic of Indonesia

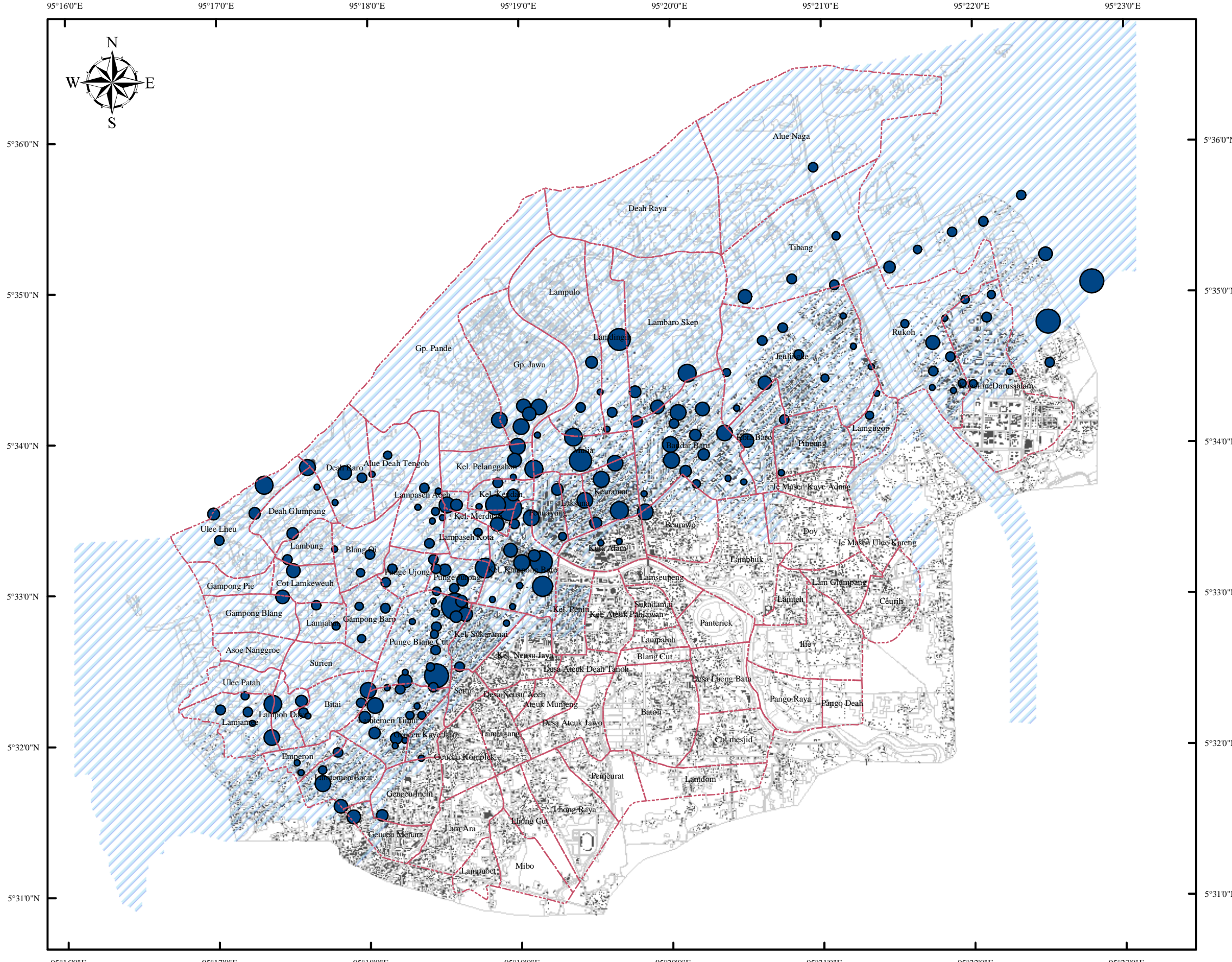


Post-Tsunami Satellite Imagery of Banda Aceh
(As of Dec. 29, 2004 and Jan. 29, 2005)

Map Reference ID: DA-0001

Legend

- Desa Boundary
- Spot Check Damage Assessment of Maximum Tsunami Water Height**
- 0.0 - 1.0
- 1.0 - 2.0
- 2.0 - 3.0
- 3.0 - 4.0
- 4.0 - 5.0
- 5.0 - 6.0
- 6.0 - 7.0
- 7.0 - 8.0
- 8.0 - 9.0
- 9.0 - 10.0
- 10.0 - 11.0
- Tsunami Inundated Area



Map Information:
Projection: UTM Zone 46N (WGS 1984)

The data shown on this map are based on a series of quick damage assessments conducted by JICA at the middle of March, 2005.

Tsunami-inundated areas were interpreted by Syiah Kuala University.

JICA Study Team







The Study
on
The Urgent Rehabilitation and Reconstruction Support Program
for
Aceh Province and Affected Areas in North Sumatra
(Urgent Rehabilitation and Reconstruction Plan for Banda Aceh City)
in
The Republic of Indonesia

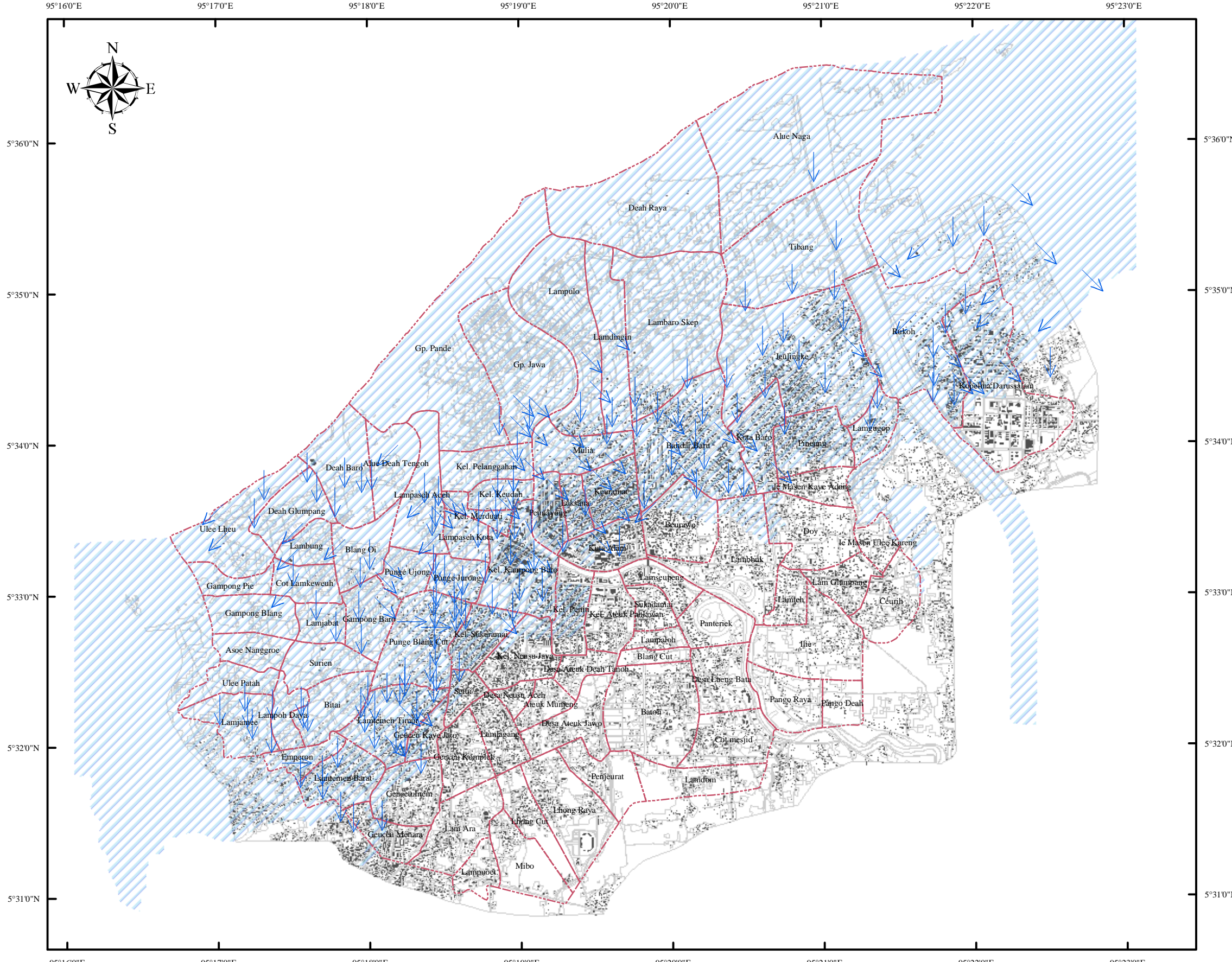
**Tsunami Damage Assessment Map
(Maximum Tsunami Water Hight)**

Map Reference ID: DA-0002

Legend

Spot Check Damage Assessment of Tsunami Flow Direction

-  North to South
-  Northeast to Southwest
-  Northwest to Southeast
-  West to East
-  **Desa Boundary**
-  **Tsunami Inundated Area**



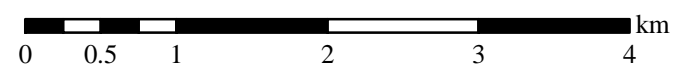
Map Information:
Projection: UTM Zone 46N (WGS 1984)

The data shown on this map are based on a series of quick damage assessments conducted by JICA at the middle of March, 2005.

Tsunami-inundated areas were interpreted by Syiah Kuala University.

JICA Study Team

The Study on
The Urgent Rehabilitation and Reconstruction Support Program
for
Aceh Province and Affected Areas in North Sumatra
(Urgent Rehabilitation and Reconstruction Plan for Banda Aceh City)
in
The Republic of Indonesia



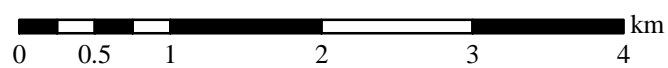
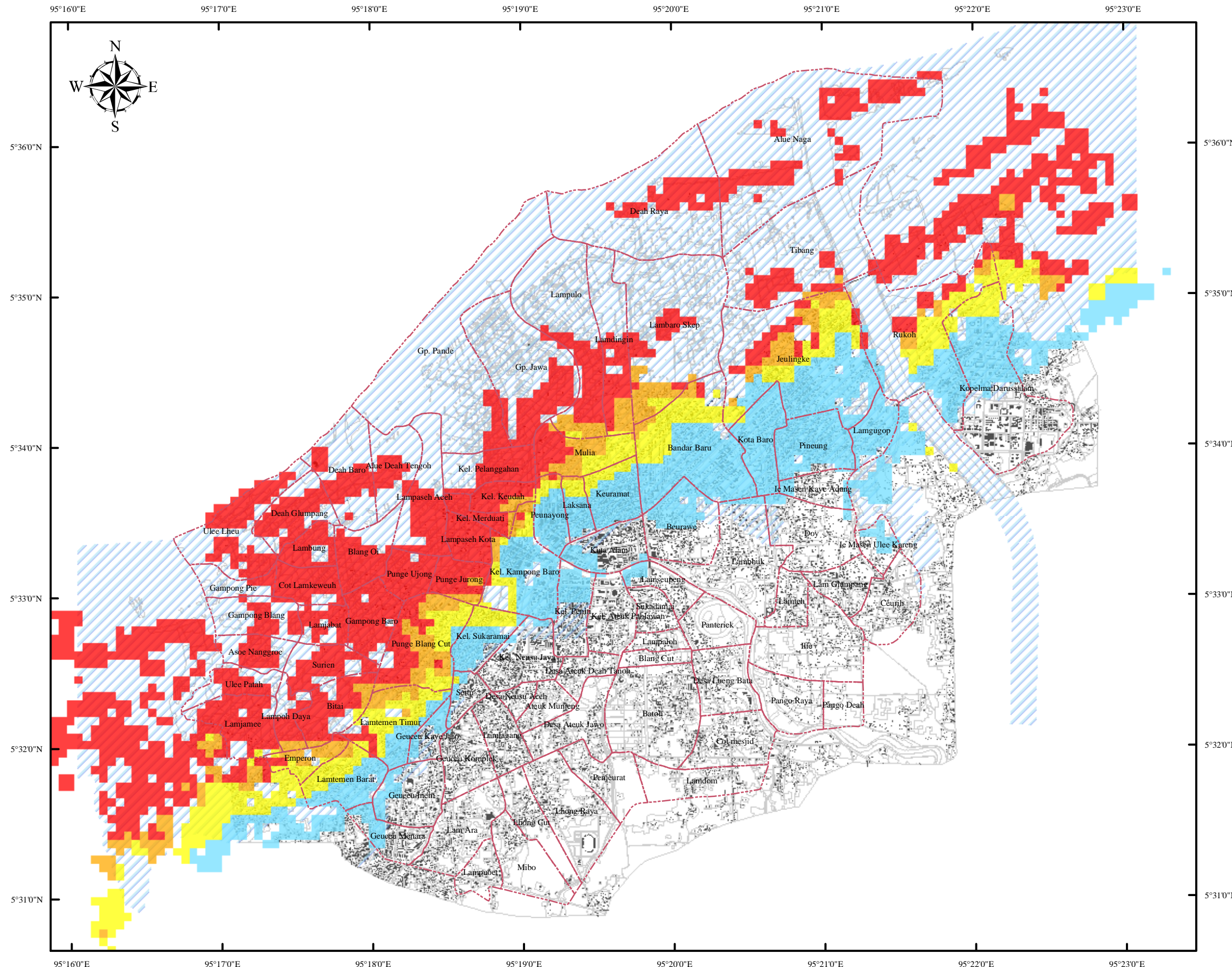
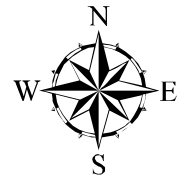
**Tsunami Damage Assessment Map
(Tsunami Water Flow)**

Map Reference ID: DA-0003

Legend

Classification of Building Damage

- Destroyed
- Major damage
- Moderate damage
- Undamaged (in inundated)
- Tsunami Inundated Area
- Desa Boundary



Tsunami Damage Assessment Map (Buildings)

Map Information:
Projection: UTM Zone 46N (WGS 1984)

The damage classification shown on this map was made by interpreting IKONOS satellite imagery acquired after December 26, 2004.







Tsunami-inundated areas were interpreted by Syiah Kuala University.

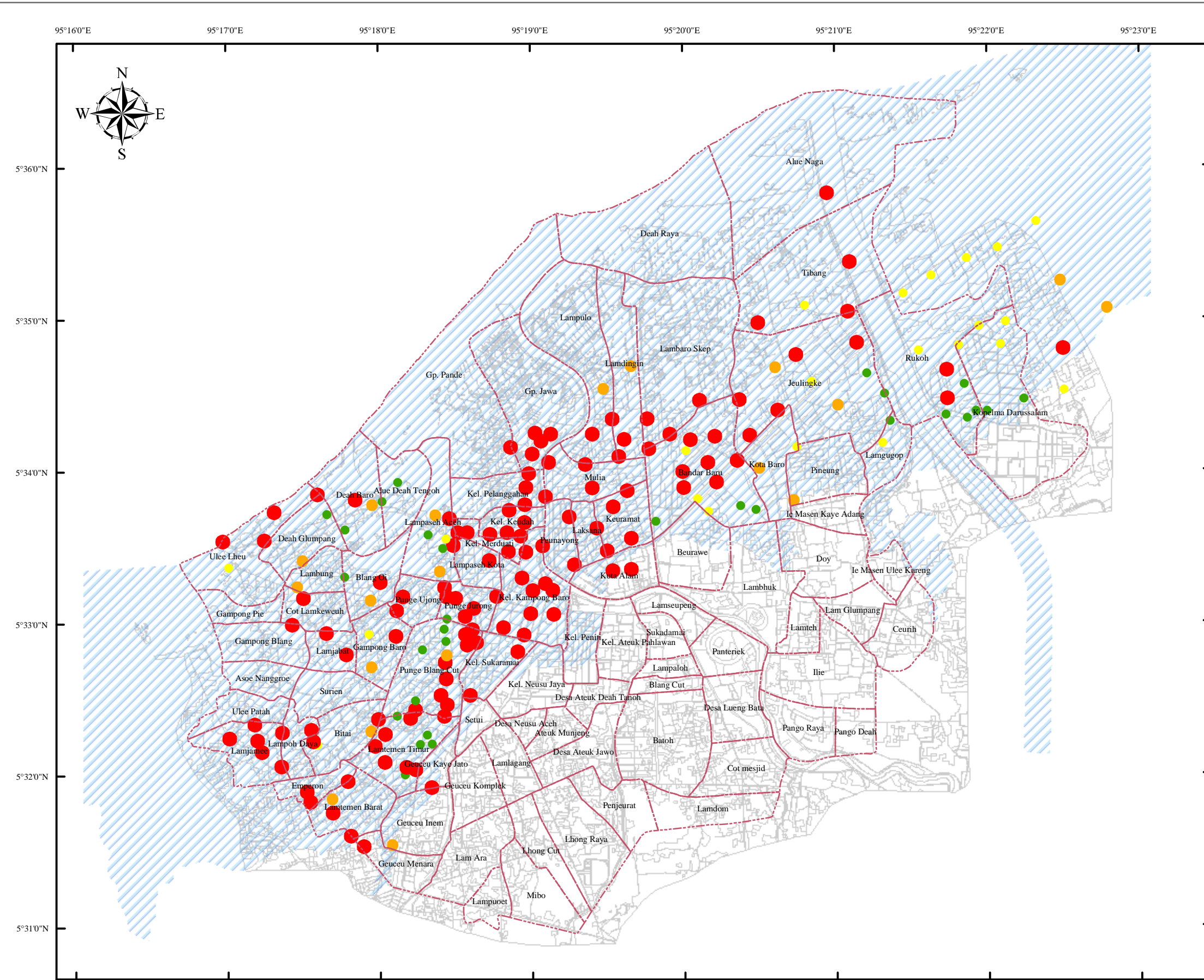
JICA Study Team

The Study on
The Urgent Rehabilitation and Reconstruction Support Program
for
Aceh Province and Affected Areas in North Sumatra
(Urgent Rehabilitation and Reconstruction Plan for Banda Aceh City)
in
The Republic of Indonesia

Map Reference ID: DA-0004

Legend

-  Desa Boundary
- Spot Check Damage Assessment of Electric Supply Availability**
-  Supply cut
-  Major interruption to supply
-  Minor interruption to supply
-  No interruption to supply
-  Tsunami Inundated Area



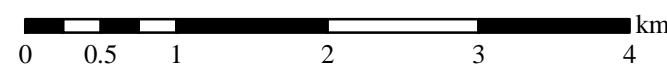
Map Information:
 Projection: UTM Zone 46N (WGS 1984)

The data shown on this map are based on a series of quick damage assessments conducted by JICA at the middle of March, 2005.

Tsunami-inundated areas were interpreted by Syiah Kuala University.

JICA Study Team

The Study on
 The Urgent Rehabilitation and Reconstruction Support Program
 for
 Aceh Province and Affected Areas in North Sumatra
 (Urgent Rehabilitation and Reconstruction Plan for Banda Aceh City)
 in
 The Republic of Indonesia

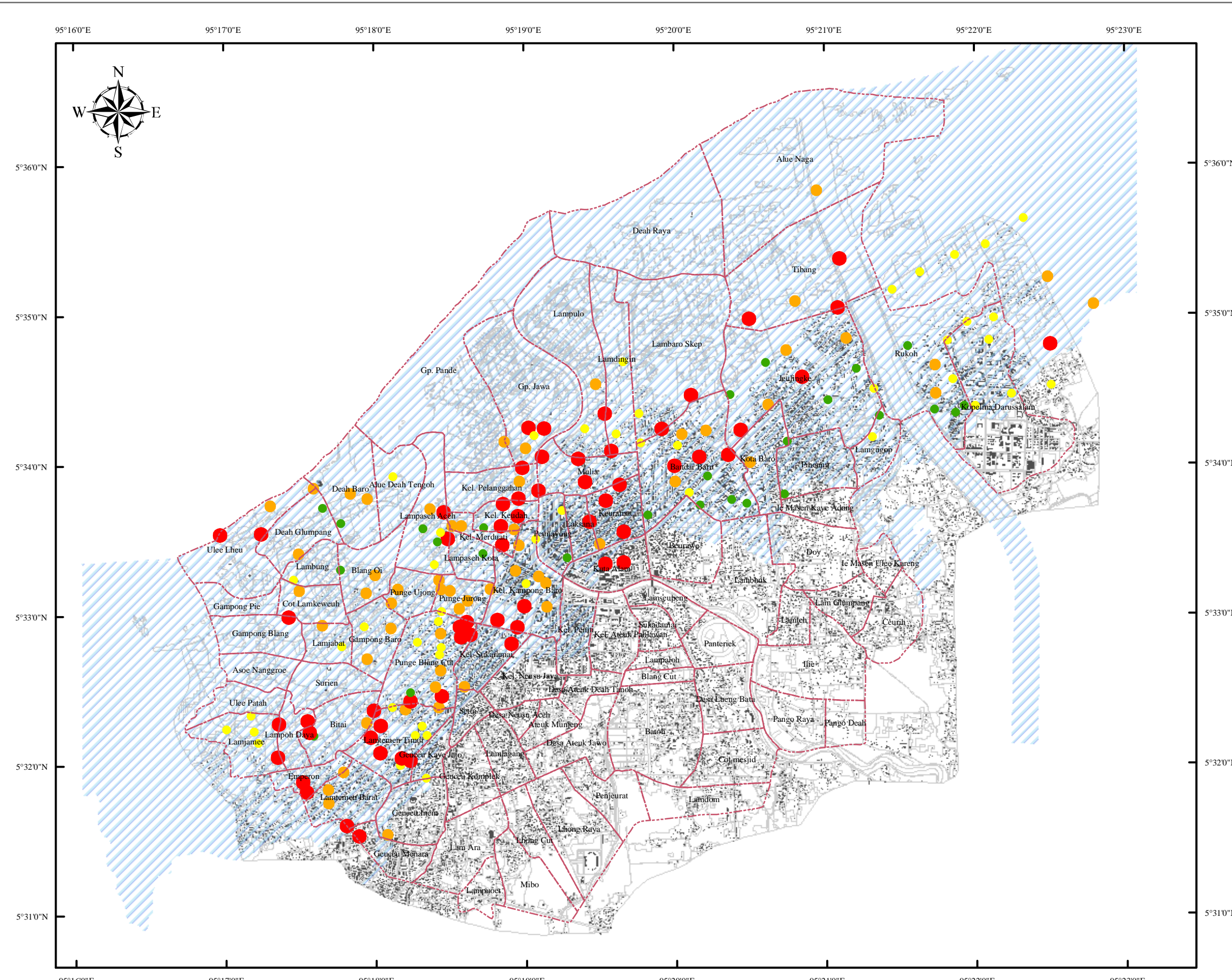


**Tsunami Damage Assessment
 (Electricity Supply)**

Map Reference ID: DA-0005

Legend

- Desa Boundary
- Spot Check Damage Assessment of Drainage System Integrity**
- Destroyed
- Heavily damaged
- Slightly damaged
- No damage
- Tsunami Inundated Area



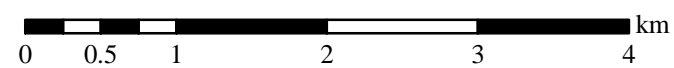
Map Information:
Projection: UTM Zone 46N (WGS 1984)

The data shown on this map are based on a series of quick damage assessments conducted by JICA at the middle of March, 2005.

Tsunami-inundated areas were interpreted by Syiah Kuala University.

JICA Study Team







The Study on
The Urgent Rehabilitation and Reconstruction Support Program
for
Aceh Province and Affected Areas in North Sumatra
(Urgent Rehabilitation and Reconstruction Plan for Banda Aceh City)
in
The Republic of Indonesia

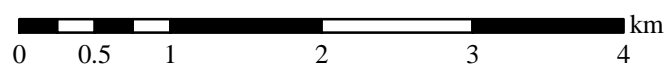
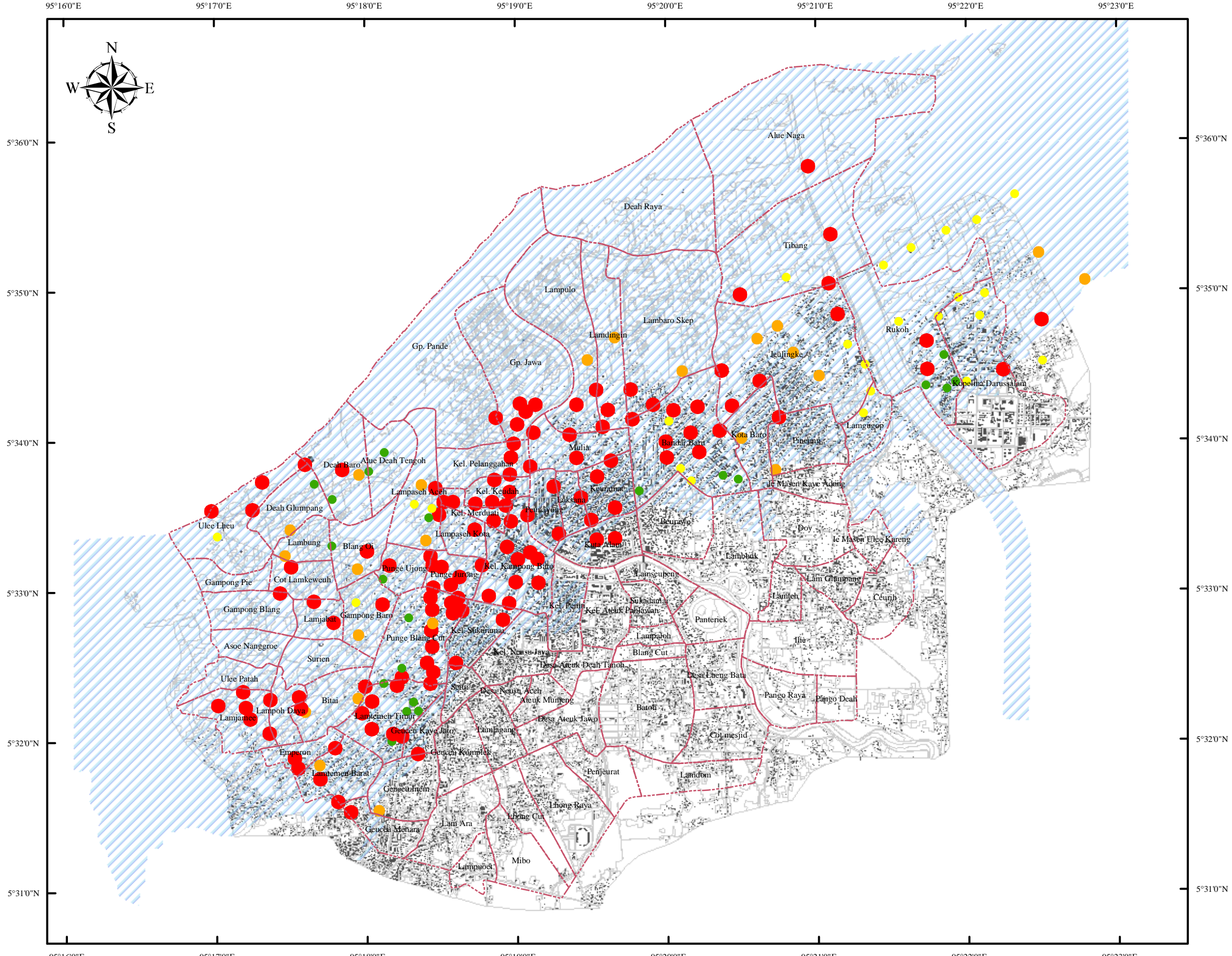


**Tsunami Damage Assessment Map
(Drainage System Integrity)**

Map Reference ID: DA-0006

Legend

-  Desa Boundary
- Spot Check Damage Assessment of Telephone Service Availability**
-  Services cut
-  Major interruption to services
-  Minor interruption to services
-  No interruption to services
-  Tsunami Inundated Area



**Tsunami Damage Assessment Map
(Telephone Services)**

Map Information:
 Projection: UTM Zone 46N (WGS 1984)

The data shown on this map are based on a series of quick damage assessments conducted by JICA at the middle of March, 2005.

Tsunami-inundated areas were interpreted by Syiah Kuala University.

JICA Study Team

The Study
 on
 The Urgent Rehabilitation and Reconstruction Support Program
 for
 Aceh Province and Affected Areas in North Sumatra
 (Urgent Rehabilitation and Reconstruction Plan for Banda Aceh City)
 in
 The Republic of Indonesia