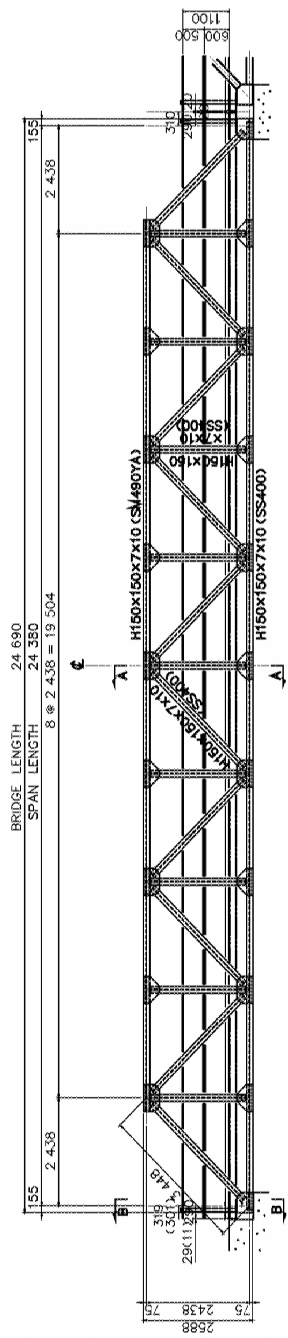
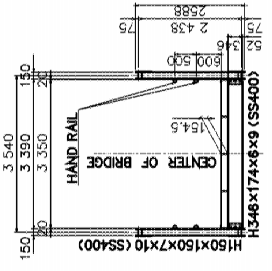


GENERAL ARRANGEMENT
SCALE 1:100

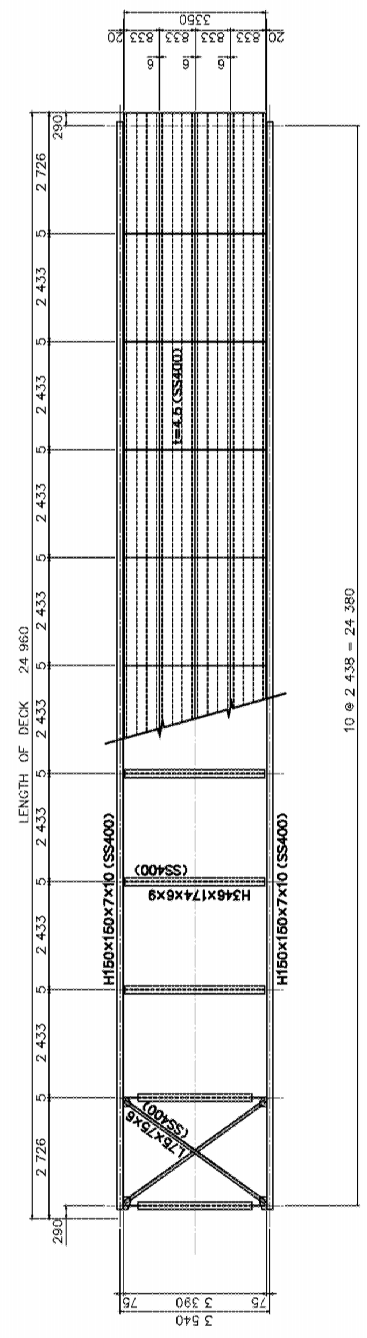
SIDE VIEW



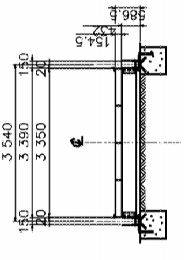
CROSS SECTION A-A



PLAN



B-B

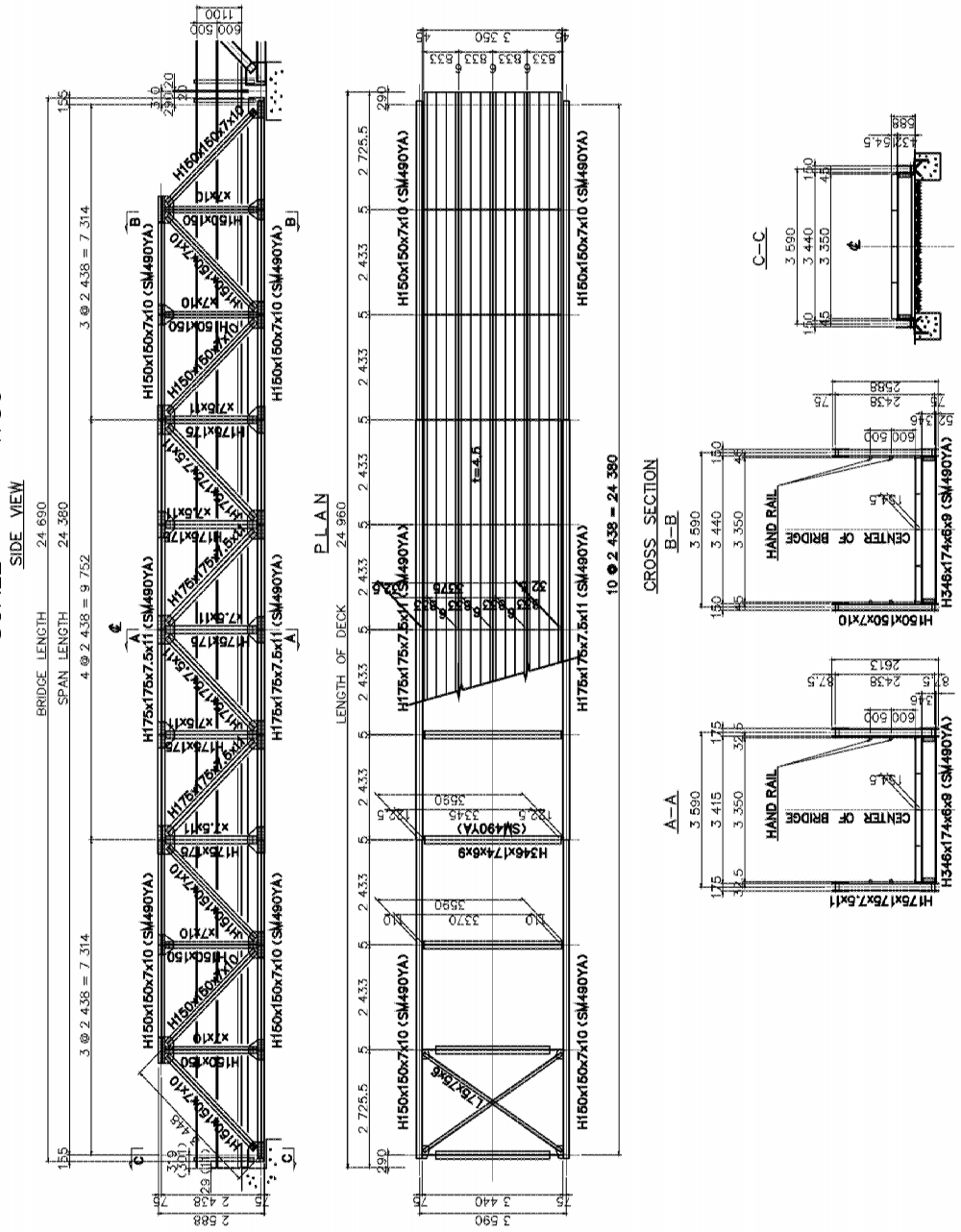


N.O.T.E
Steel shall be JS 63101 SS400 unless otherwise shown.

LOCAL GOVERNMENT ENGINEERING DEPARTMENT PEOPLE'S REPUBLIC OF BANGLADESH	BASIC DESIGN STUDY ON THE PROJECT FOR PROVISION OF PORTABLE STEEL BRIDGES ON UPAZILA AND UNION ROADS	JAPAN INTERNATIONAL COOPERATION AGENCY KATAHIRA & ENGINEERS INTERNATIONAL	SCALE As shown	DRAWING NO. 4/
--	--	--	-------------------	-------------------

Figure 2.2.3-4 General Arrangement L = 25m (HS-15)

GENERAL ARRANGEMENT
SCALE 1:50



NOTE
Steel shall be JS 63101 SS400 unless otherwise shown.

LOCAL GOVERNMENT ENGINEERING DEPARTMENT PEOPLE'S REPUBLIC OF BANGLADESH	BASIC DESIGN STUDY ON THE PROJECT FOR PROVISION OF PORTABLE STEEL BRIDGES ON UPAZILA AND UNION ROADS	JAPAN INTERNATIONAL COOPERATION AGENCY KATAHIRA & ENGINEERS INTERNATIONAL
DETAILS OF PORTABLE STEEL BRIDGE GENERAL ARRANGEMENT L=25m (HS-20)		SCALE As shown
		DRAWING NO. 5/

Figure 2.2.3-5 General Arrangement L = 25m (HS-20)