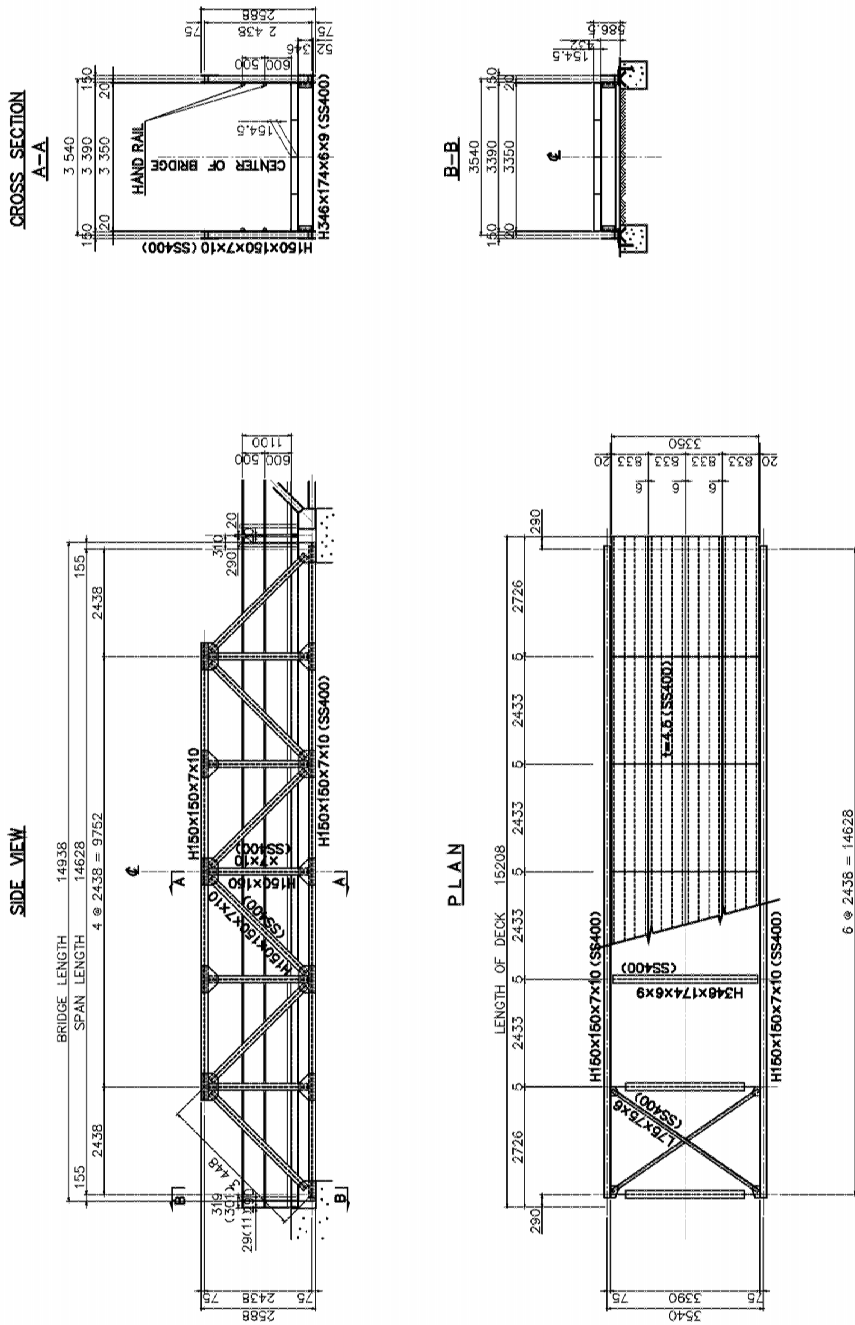


GENERAL ARRANGEMENT  
SCALE 1:100



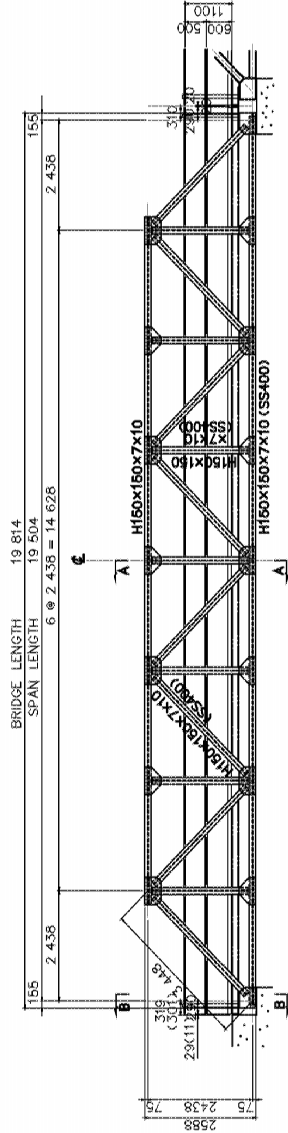
NOTE  
Steel shall be JS G3101 SS400 unless  
otherwise shown.

LOCAL GOVERNMENT ENGINEERING DEPARTMENT PEOPLE'S REPUBLIC OF BANGLADESH	BASIC DESIGN STUDY ON THE PROJECT FOR PROVISION OF PORTABLE STEEL BRIDGES ON UPAZILA AND UNION ROADS	JAPAN INTERNATIONAL COOPERATION AGENCY KATAHIRA & ENGINEERS INTERNATIONAL	SCALE As Shown	DETAILS OF PORTABLE STEEL BRIDGE GENERAL ARRANGEMENT L=15m (HS-20)	DRAWING NO. 2/
--	--	--	-------------------	--	-------------------

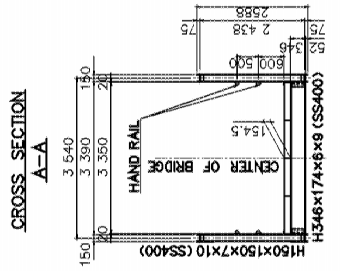
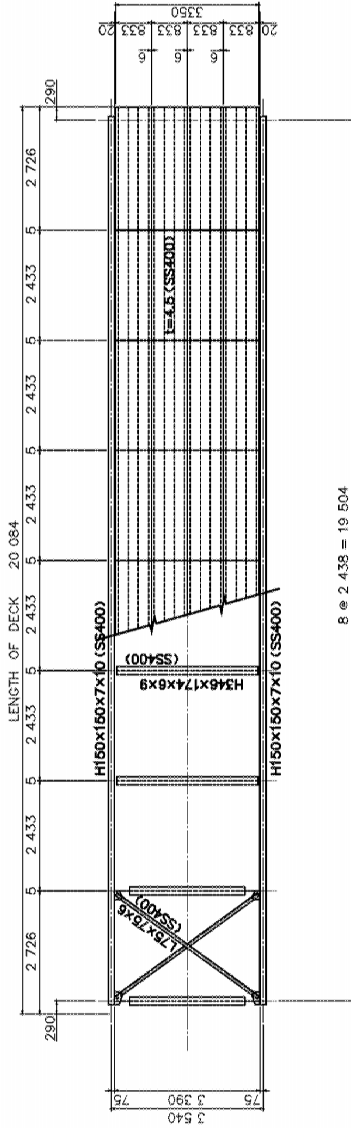
Figure 2.2.3-2 General Arrangement L = 15m (HS-20)

**GENERAL ARRANGEMENT**  
**SCALE 1:100**

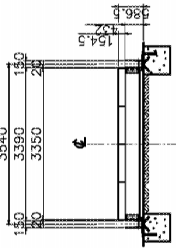
**SIDE VIEW**



**PLAN**



**B-B**



**NOTE**  
Steel shall be JS C3101 SS400 unless otherwise shown.

LOCAL GOVERNMENT ENGINEERING DEPARTMENT PEOPLE'S REPUBLIC OF BANGLADESH	BASIC DESIGN STUDY ON THE PROJECT FOR PROVISION OF PORTABLE STEEL BRIDGES ON UPAZILA AND UNION ROADS	JAPAN INTERNATIONAL COOPERATION AGENCY KATAHIRA & ENGINEERS INTERNATIONAL	DETAILS OF PORTABLE STEEL BRIDGE GENERAL ARRANGEMENT L=20m (HS-20)	DRAWING NO. 3/
SCALE As Shown				

Figure 2.2.3-3 General Arrangement L = 20m (HS-20)