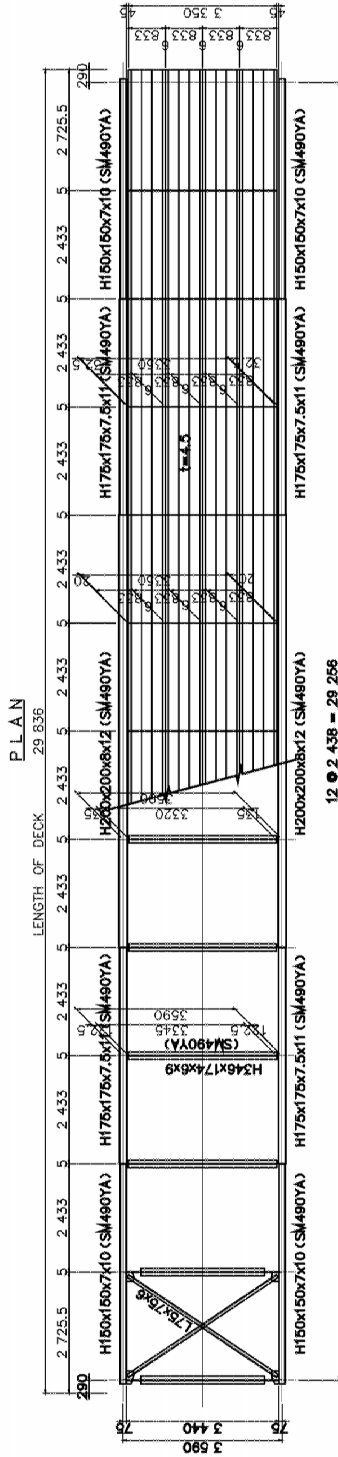
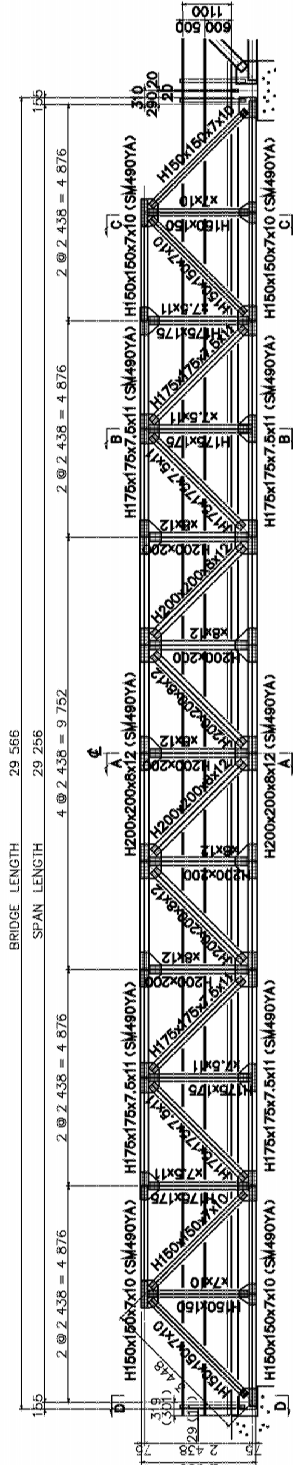
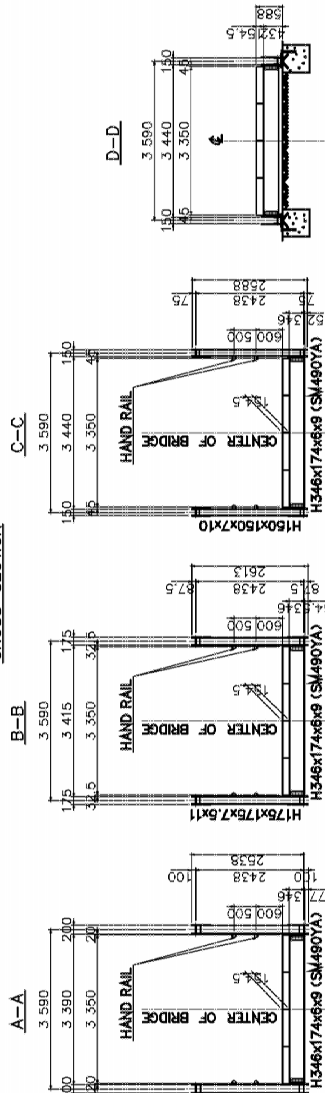




GENERAL ARRANGEMENT  
SCALE 1:100  
SIDE VIEW



CROSS SECTION



N O T E  
Steel shall be JS G3101 SS400 unless otherwise shown.

LOCAL GOVERNMENT ENGINEERING DEPARTMENT PEOPLE'S REPUBLIC OF BANGLADESH	BASIC DESIGN STUDY ON THE PROJECT FOR PROVISION OF PORTABLE STEEL BRIDGES ON UPAZILA AND UNION ROADS	JAPAN INTERNATIONAL COOPERATION AGENCY KATAHIRA & ENGINEERS INTERNATIONAL	SCALE As Shown	DETAILS OF PORTABLE STEEL BRIDGE GENERAL ARRANGEMENT L=30m (HS-20)	DRAWING NO. 6/
--	--	--	-------------------	--	-------------------

図 3.2.3-6 上部工構造図 (1 車線 HS-20 30m 径間)