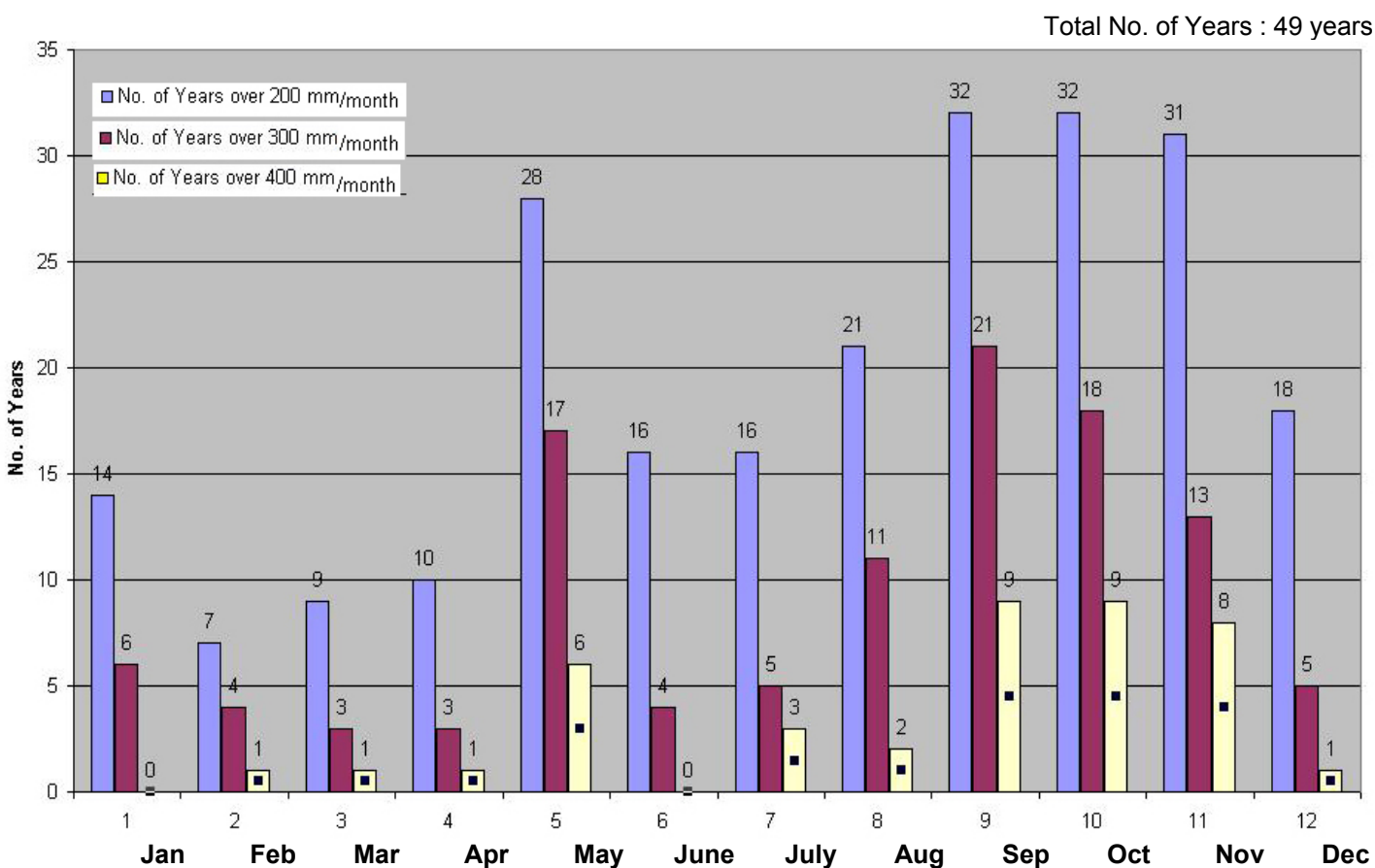


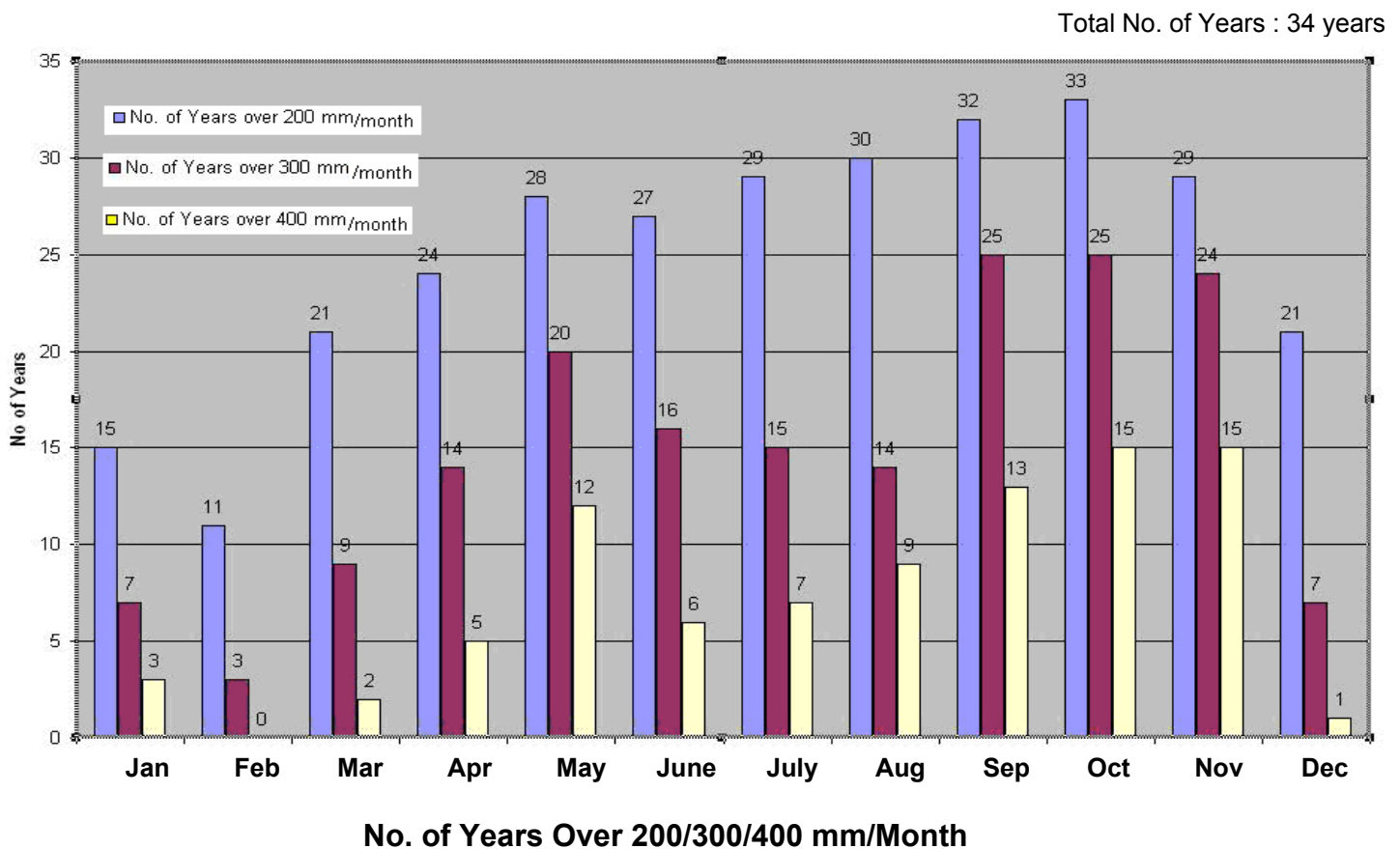
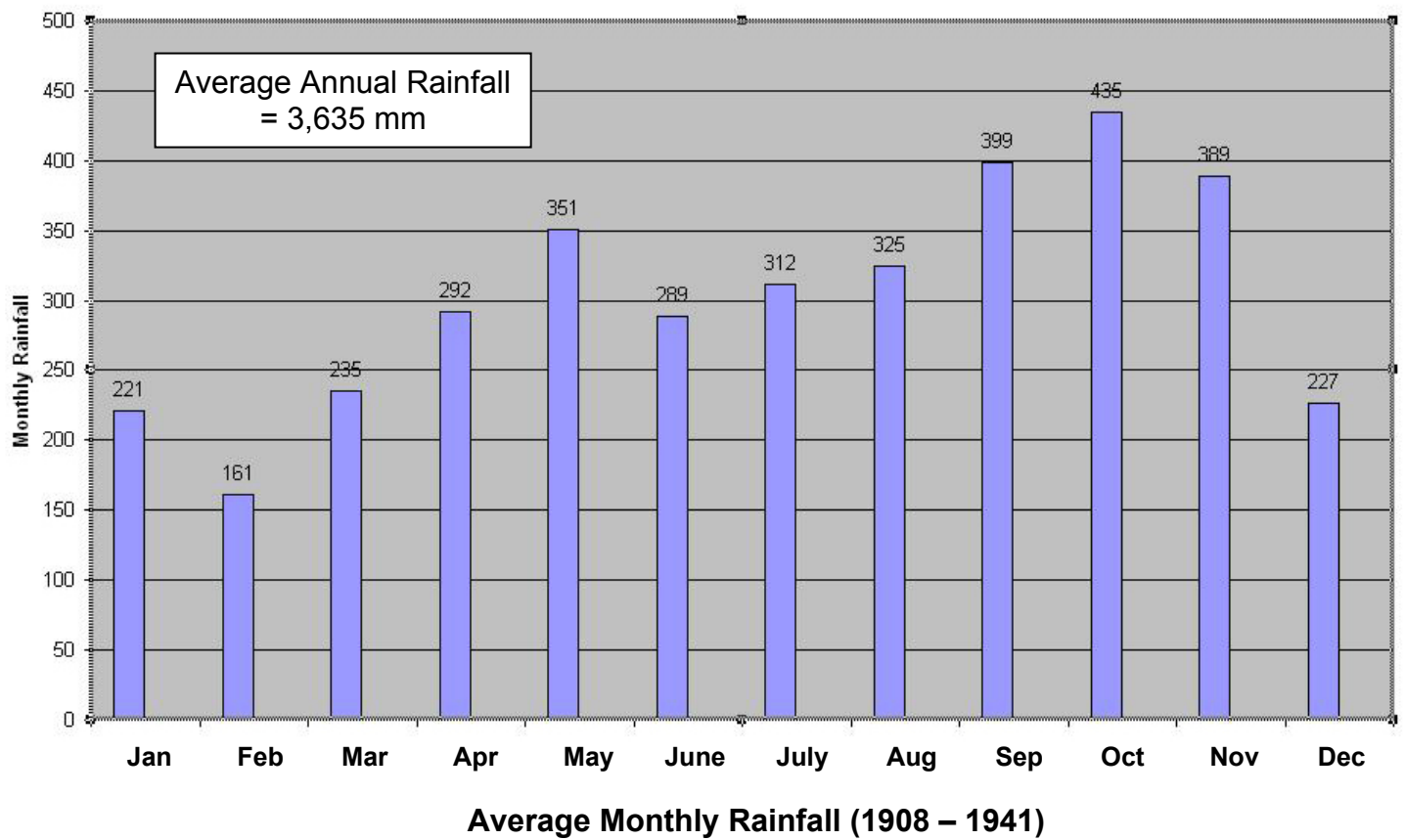
Average Monthly Rainfall (1899 – 1956)



No. of Years Over 200/300/400 mm/Month

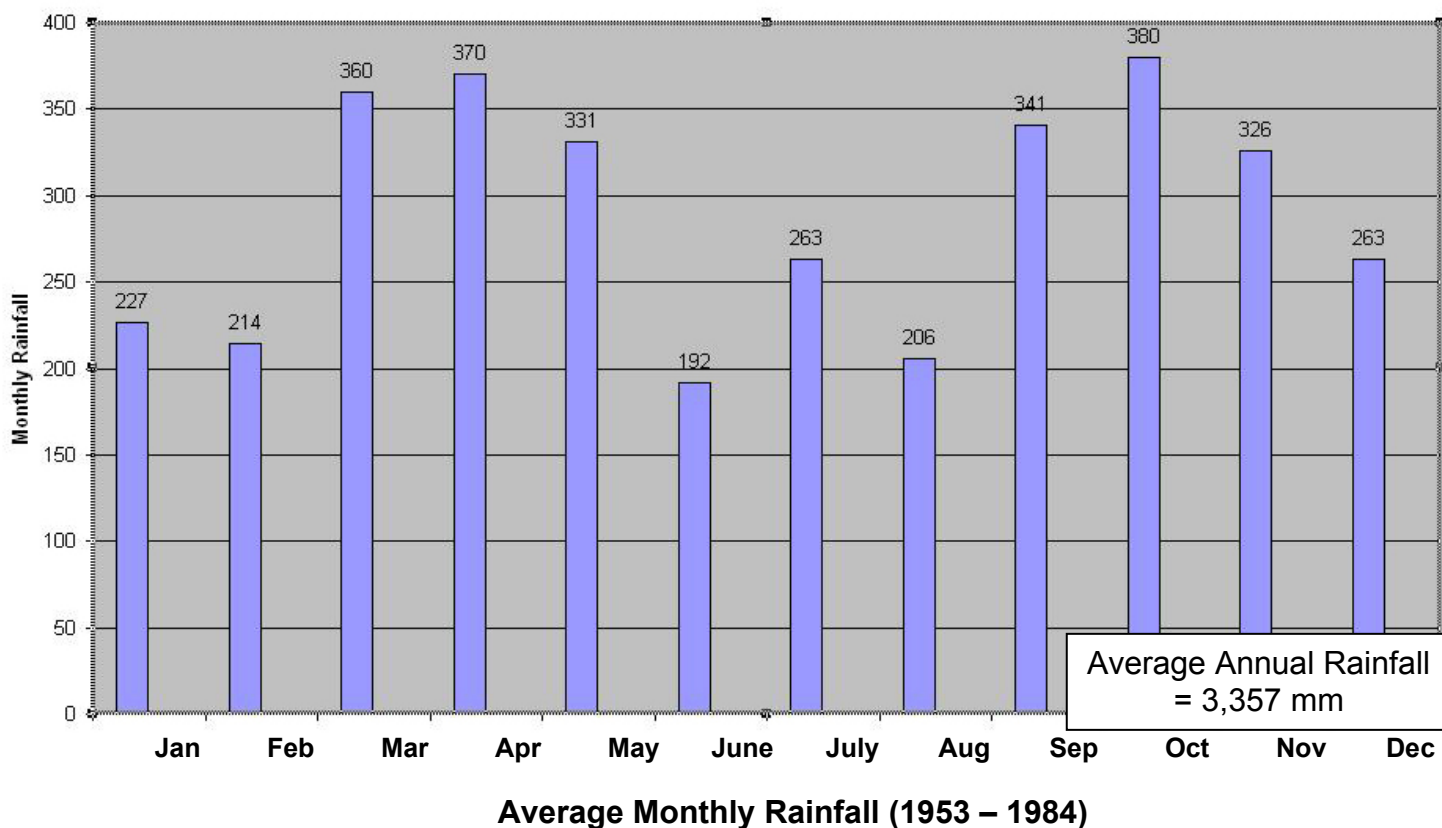
Lho Nga Weather Station No. 106

Figure 2.1 – 3 (1/3) RAINFALL DATA

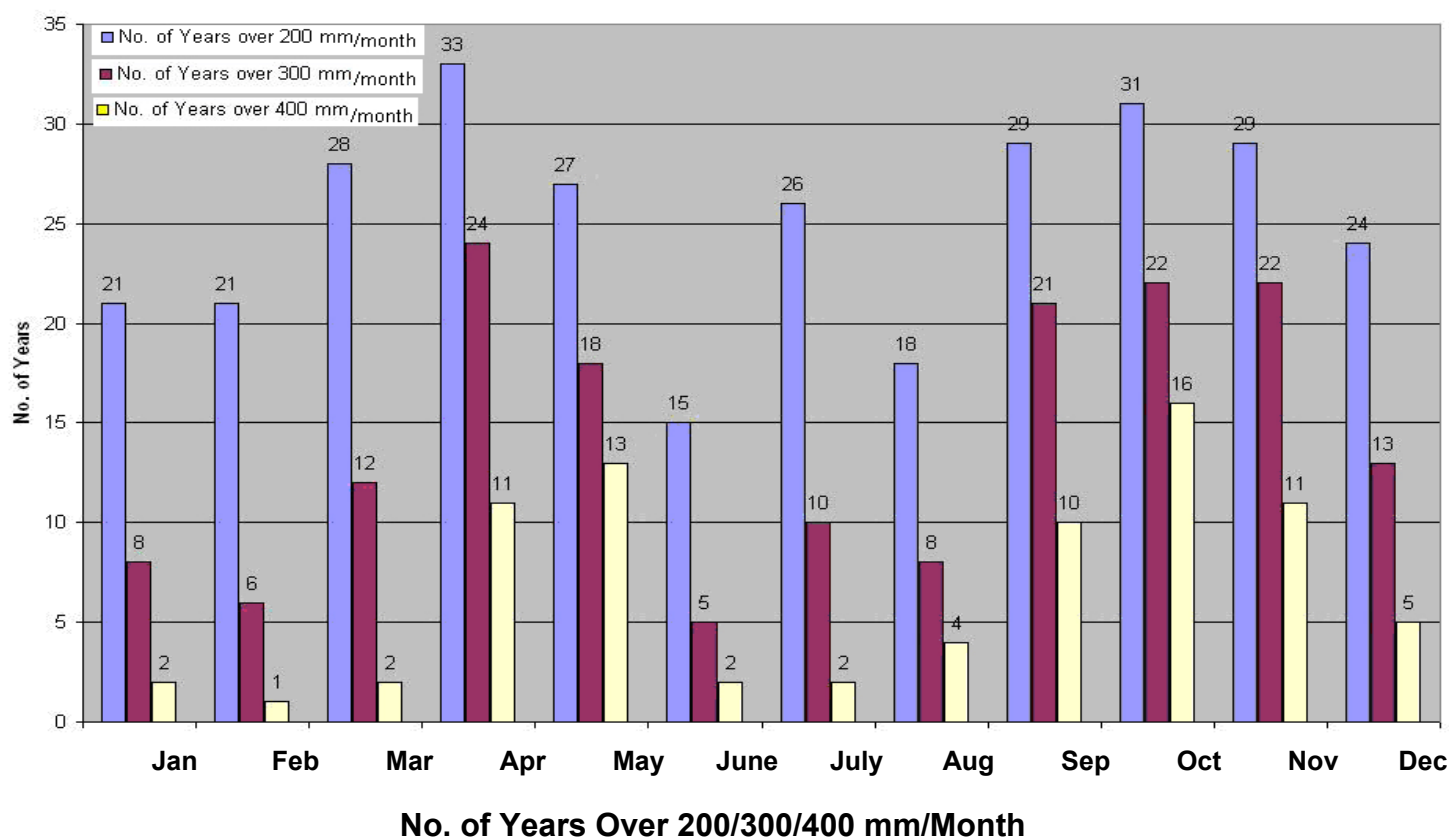


Calang Weather Station No. 103

Figure 2.1 – 3 (2/3) RAINFALL DATA

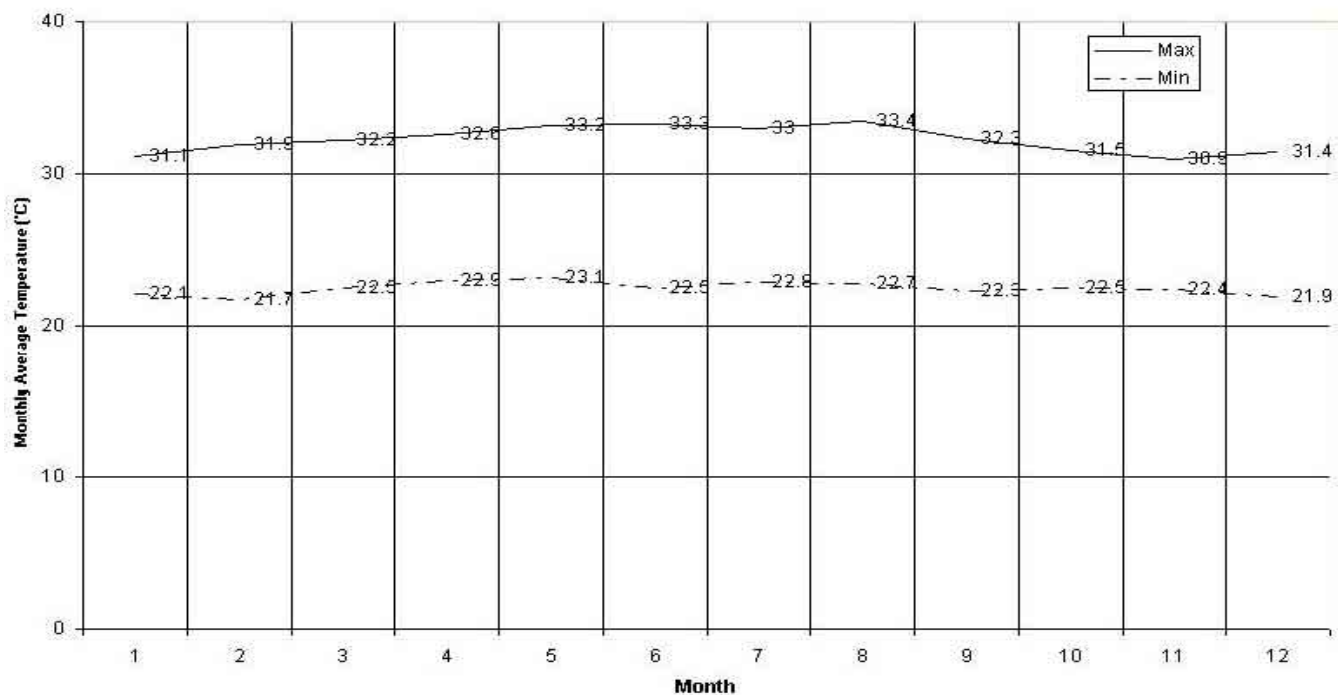


Total No. of Years : 36 years

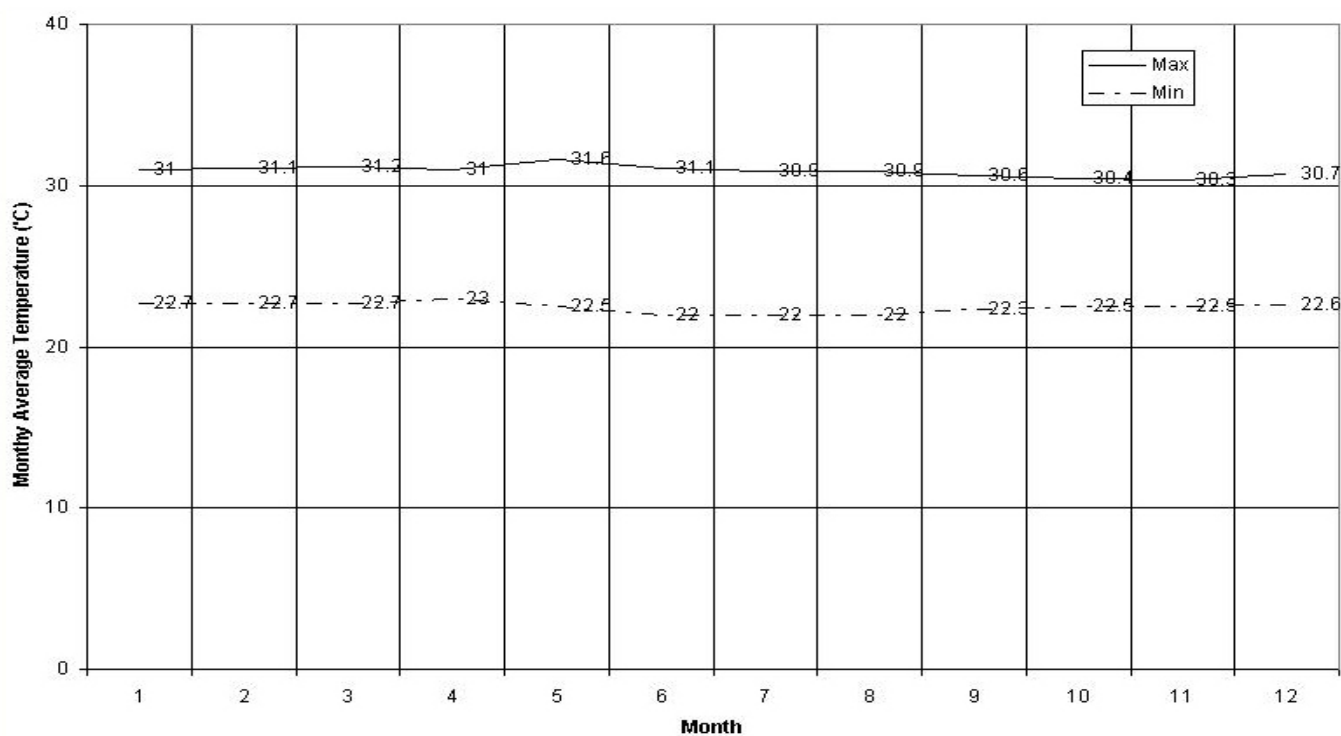


Meulaboh Weather Station No. 102

Figure 2.1 – 3 (3/3) RAINFALL DATA



At Banda Aceh Weather Station



At Meulaboh Weather Station

Figure 2.1 – 4 MAXIMUM AND MINIMUM MONTHLY AVERAGE TEMPERATURE IN BANDA ACEH AND MEULABOH (Average of 2000-2004)

2.2 SOCIO-ECONOMIC CONDITIONS

2.2.1 Population

Population of Aceh Province in 2003 was 4.2 million which shares about 2% of total population of Indonesia. An average population growth rate of Aceh Province from 1990 to 2000 was 1.46% which was almost same growth rate as that of the country. An average annual population growth rate of Aceh Province recorded quite high at 2.57% compared with that of the country. Population density in 2003 was 81 persons/km² which is lower than national average.

TABLE 2.2-1 POPULATION, POPULATION GROWTH RATE AND POPULATION DENSITY

Area	Population (in 1,000)			Annual Average Population Growth Rate (%)		Population Density (Person / km ²)		
	1990	2000	2003	1990-2000	2000-2003	1990	2000	2003
Aceh Province	3,416 (1.90%)	3,929 (1.91%)	4,240 (1.97%)	1.46	2.57	66	76	81
Sumatra	36,472 (29.4%)	43,264 (21.04%)	44,816 (20.8%)	1.72	1.18	76	90	93
Indonesia	178,500 (100%)	205,843 (100%)	215,276 (100%)	1.49	1.50	95	109	114

Source: Statistical Yearbook of Indonesia, 2003

2.2.2 Land Use

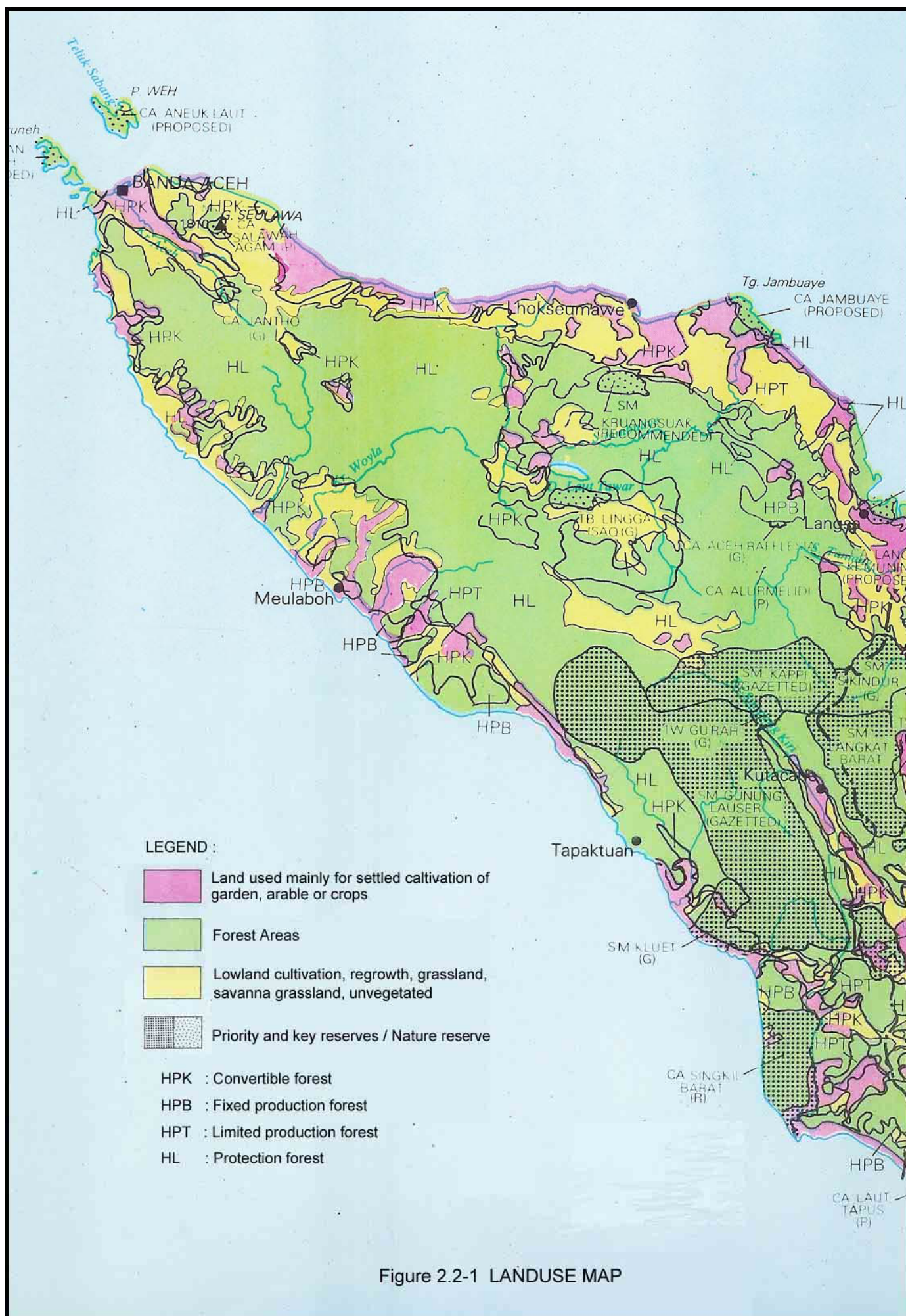
Present land use is shown in **Figure 2.2-1**. Most inland area is covered by deep forest. Unknown communities are scattered along the coastal area.

2.2.3 Major Economic Indicators

Major economic indicators are shown in **Table 2.2-2**. Economic outputs of Aceh Province contributed to about 2.2% of GDP in 2002. Recent economic growth of Aceh Province is rather stagnant and recorded lower growth than GDP, however, per capita GRDP was higher than that of the country.

TABLE 2.2-2 MAJOR ECONOMIC INDICATORS

		Unit	1999	2000	2001	2002
Aceh Province	GRDP (Current Price)	B.RP.	26,991 (2.45%)	28,923 (2.29%)	33,240 (2.29%)	35,471 (2.20%)
	GRDP (Constant Price)	B.RP.	9,950	9,129	9,238	9,249
	Growth Rate	%	-4.19	-8.25	1.19	0.13
	Per Capita GRDP (Current Price)	1000 Rp.	6,864	7,361	8,342	8,778
Sumatra	GRDP (Current Price)	B.Rp.	224,205 (20.4%)	256,015 (20.2%)	288,514 (19.9%)	323,203 (20.1%)
	GRDP (Constant Price)	B.Rp.	84,181	88,818	91,909	95,383
	Growth Rate	%	1.68	5.51	3.48	3.78
	Per Capita GRDP (Current Price)	1000 Rp.	5,364	5,917	6,550	7,207
Indonesia	GDP (Current Price)	B.Rp.	1,099,732 (100%)	1,264,919 (10%)	1,449,398 (100%)	1,610,012 (100%)
	GDP (Current Price)	B.Rp.	379,352	398,017	411,691	426,741
	Growth Rate	%	0.79	4.92	3.44	3.66
	Per Capita GDP (Current Price)	1000 Rp.	4,954	5,812	6,537	7,262



2.2.4 Industrial Structure

Industrial structure of Aceh Province is shown in Table 2.2-3. Primary industry is dominant and shares 60% which include mining industry (mainly oil and natural gas); secondary and tertiary industry shares 24% and 16%, respectively.

Table 2.2-3 INDUSTRIAL STRUCTURE OF ACEH PROVINCE

		2001		2002		2003	
		GRDP	%	GRDP	%	GRDP	%
Primary Industry	Agri / fishery	9,820	29.5	11,008	31.0	12,410	32.2
	Mining (include oil and natural gas)	10,429	31.4	10,392	29.3	10,816	28.0
	Sub-total	20,249	60.9	21,400	60.3	23,226	60.2
Secondary Industry	Manufacturing	7,532	22.7	7,788	21.9	8,190	21.2
	Electricity, Gas Water	55	0.1	74	0.2	104	0.3
	Construction	762	2.3	88.6	2.5	1,041	2.7
	Sub-total	8,349	25.1	8,748	24.6	9,335	24.2
Tertiary Industry	Commence, Hotel, Restaurant, etc.	1,928	5.8	2,240	6.3	2,456	6.4
	Transport Communication	1,499	4.5	1,754	4.9	1,960	5.1
	Finance	368	1.1	389	1.1	482	1.2
	Service	848	2.6	968	2.7	1,111	2.9
	Sub-total	4,634	13.9	5,347	15.1	6,009	15.6
TOTAL		33,241	100.0	35,495	100.0	38,570	100.0

2.3 ROAD NETWORK AND TRAFFIC VOLUME

2.3.1 Road Classification

Road Classification of Indonesia is shown in **Table 2.3-1**. The West Coast Road is classified as a national road.

TABLE 2.3-1 ROAD CLASSIFICATION

Functional Classification			Administrative Classification	Responsible Agency
Primary Road	Arterial Road		National Road	Ministry of Public Works
	Collector Road	Class 1		
		Class 2	Provincial Road	Provincial Government
		Class 3		
		Class 4	Kabupaten Road	Kebupaten Government
	Local Road			
Secondary Road	Arterial, Collector, Local Road		Kota Road	Kota Government
	Local Road		Village Road	Kota/Kebupaten Government

Note:

- Class 1 :** Road connecting Provincial Capitals
- Class 2 :** Road connecting Provincial Capital with Kabupaten / Kota Capital
- Class 3 :** Road connecting Kabupaten / Kota Capitals
- Class 4 :** Road connecting Kabupaten / Kota Capital with Kecamatan / Klurahan Capital

2.3.2 Road Network of Aceh Province

Road network of Aceh Province is shown in Figure 2.3-1. The West Coast Road is the only road serving for the West Coast Area. There are three Provincial Roads branching off from the West Coast Road and extending towards inland areas.

2.3.3 Traffic Volume on West Coast Road

The Public Works Office of Aceh Province undertook traffic count survey in 2004, result of which is shown in Table 2.3-2. Traffic volume varies from 3,150 to 7,450 vehicles/day. Section at 125 has the highest traffic volume both Banda Aceh and Meulaboh.



TABLE 2.3-2 DAILY TRAFFIC VOLUME ON WEST COAST ROAD (2004)

Location	1	2	3	4	5	6	7	8	9	10	2~10	11	1~11
	Motor cycle	car, Jeep, Van	Minibus	Pickup, Micro truck	Small Bus	Big Bus	2-Axle Truck	3-Axle Truck	Trailer Truck	Semi-Trailer	Sub Total	Non - Motorized	TOTAL
KM 31	D1	595	517	445	38	26	107	51	3	4	1786	337	2840
	D2	457	403	312	32	20	133	40	3	4	1404	305	2127
	T	1052	920	757	70	46	240	91	6	8	3190	642	4967
KM 125	D1	927	848	770	262	98	601	316	14	11	3847	645	5605
	D2	859	802	662	390	85	511	273	10	6	3598	712	5246
	T	1786	1650	1432	652	183	1112	589	24	17	7445	1357	10851
KM 180	D1	556	564	600	48	22	248	271	6	3	2318	368	3453
	D2	508	494	461	45	53	241	212	3	6	2023	349	3018
	T	1064	1058	1061	93	75	489	483	9	9	4341	717	6471
KM 191	D1	543	466	478	90	38	223	112	6	4	1960	395	3117
	D2	644	631	495	65	31	225	144	7	5	2247	414	3409
	T	1187	1097	973	155	69	448	256	13	9	4207	809	6526
KM 254	D1	353	422	367	82	32	174	123	6	4	1563	391	2608
	D2	367	353	422	83	44	173	126	7	6	1581	378	2600
	T	720	775	789	165	76	347	249	13	10	3144	769	5208
KM 266	D1	555	507	483	149	69	180	88	7	4	2042	427	3261
	D2	549	559	485	134	55	137	116	6	5	2046	425	3182
	T	1104	1066	968	283	124	317	204	13	9	4088	852	6443

Source : Public Works of Nanggroe Aceh Darussalam Province

Note : D1 -- Direction 1
D2 -- Direction 2
T -- Total