

Ciliwung River

BH-20 km.1+113.94
GE+10.777m
dep = 30.12 m

BH-21 km.1+170.10
GE+10.594m
dep = 30.00 m

BH-24 km.1+307.84
GE+13.629m
dep = 25.15 m

ELEVATION



N-value
50 40 30 20 10 0

N-value
0 10 20 30 40 50

N-value
0 10 20 30 40 50

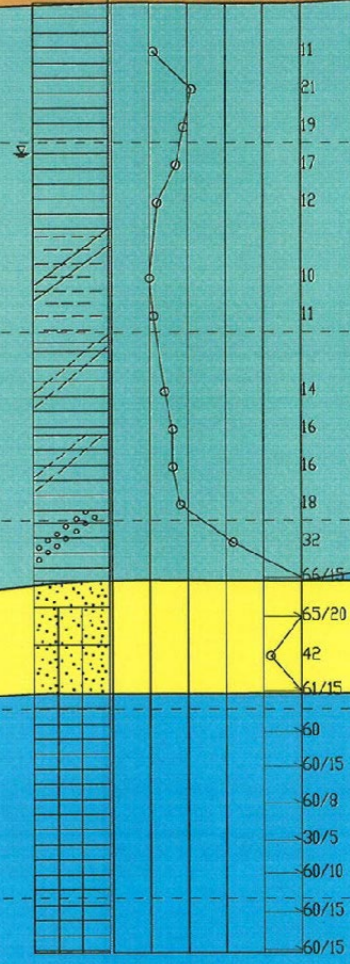
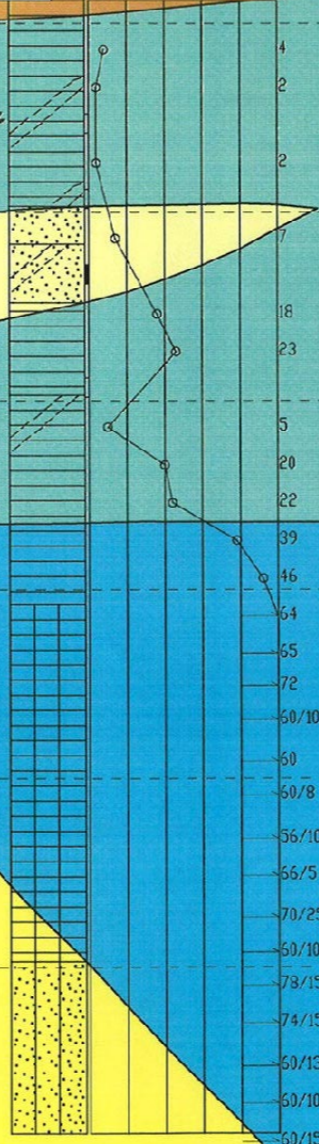
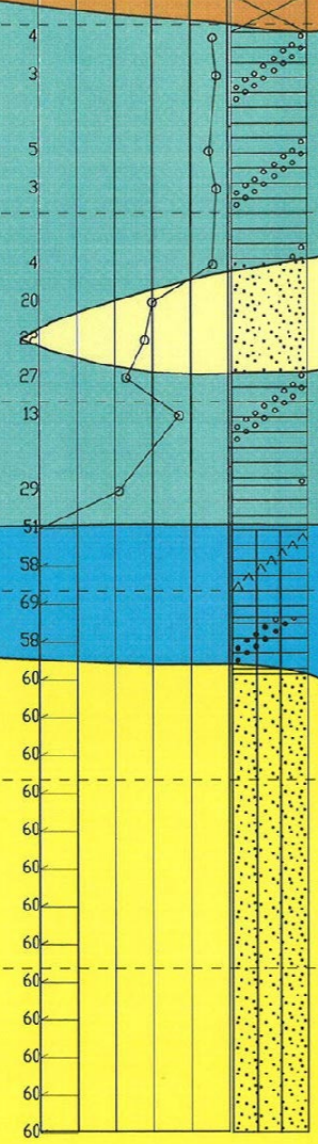
As

Ac

Ds

Dc

Ds



8.10



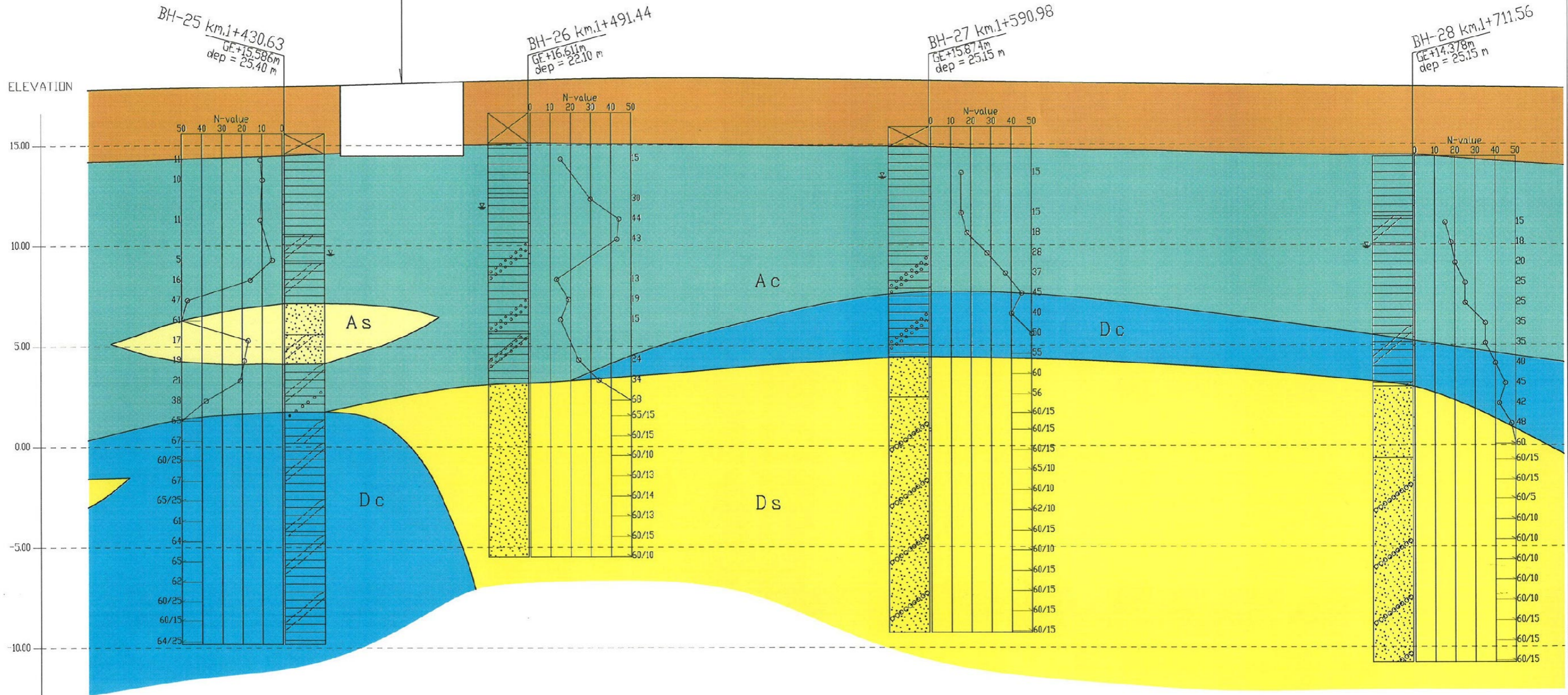
Km AGE

1+100

1+200

1+300

JL Matraman Raya

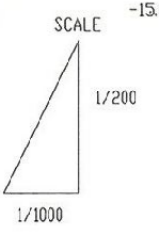


BH-25 km.1+430.63
GE+15.586m
dep = 23.40 m

BH-26 km.1+491.44
GE+16.611m
dep = 22.10 m

BH-27 km.1+590.98
GE+15.814m
dep = 25.15 m

BH-28 km.1+711.56
GE+14.378m
dep = 25.15 m



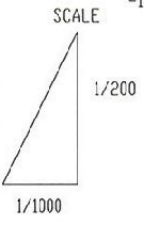
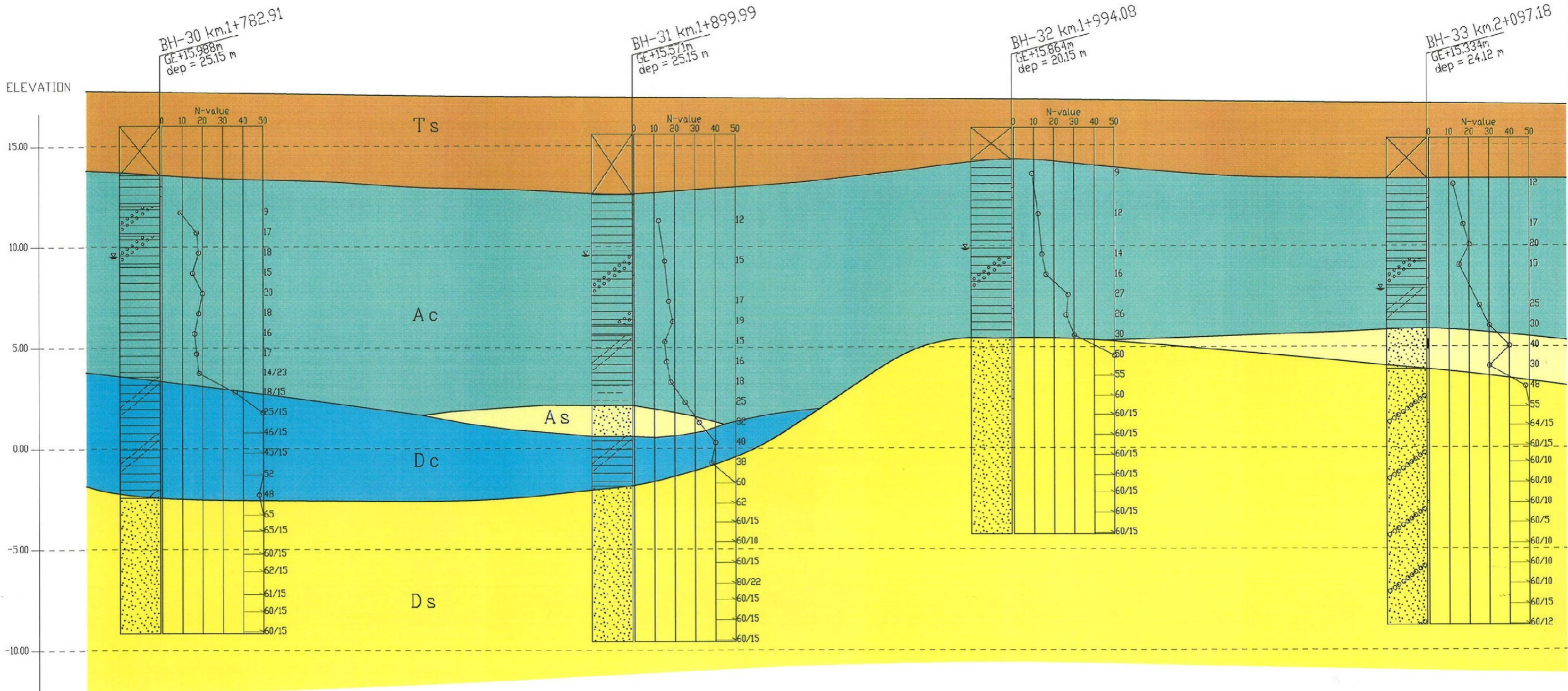
Km AGE

1+400

1+500

1+600

1+700



Km AGE 1+800 1+900 2+000 2+100

ELEVATION

標高(m)

