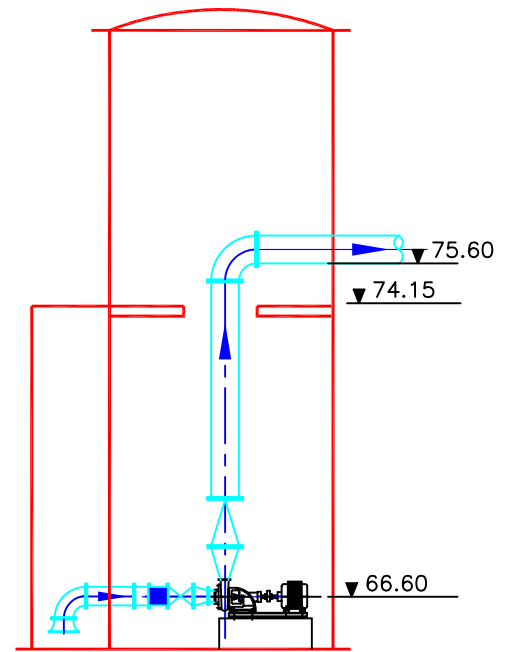
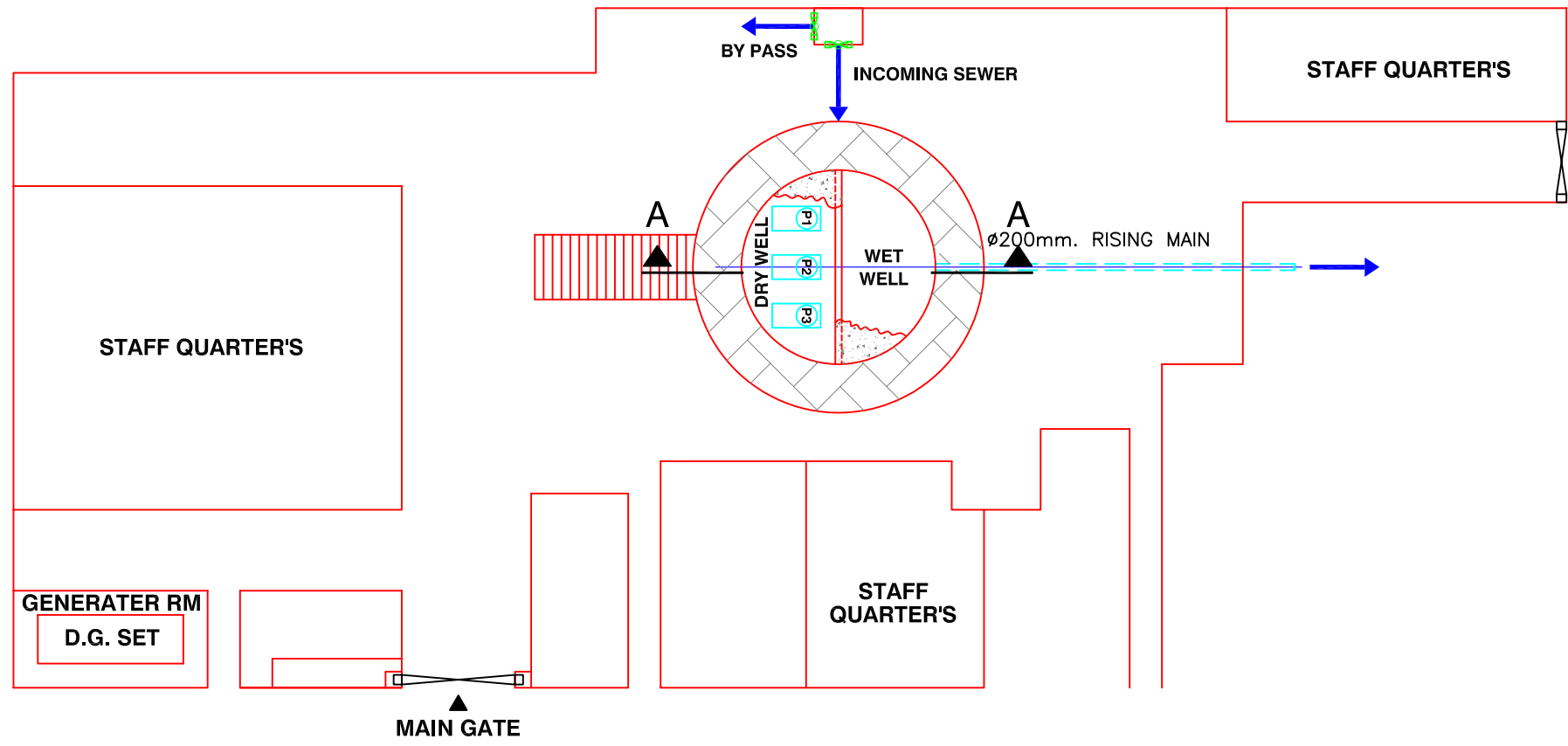


THIS DRAWING CONTAINS CONFIDENTIAL PROPRIETARY INFORMATION OF MWH INDIA PVT. LTD. AND IS NOT TO BE DISCLOSED TO THE PUBLIC OR TO COMPETITORS UNLESS OTHERWISE AUTHORISED IN WRITING BY MWH INDIA PVT. LTD.



NOTES:



**SECTION A-A**

**LAYOUT PLAN OF EXISTING HARISHCHANDRA GHAT PUMPING STATION**

DETAILS OF EXISTING PUMPING STATION	
DIMENSIONS	6.0 m.DIA. CIRCULAR SUMP CUM PUMP HOUSE SUMP FLOOR IS 6.5 m. BELOW THE OPERATING PLATFORM
INSTALLED CAPACITY	146 lps.
INSTALLED PUMPS	1 x 50 HP - 5000 lpm @ 24 m. head 1 x 25 HP - 2600 lpm @ 13.5 m. head 1 x 10 HP - 1150 lpm @ 9.5 m. head
D.G. SETS	1 x 70 KVA
RISING MAIN	150ø C.I.

INST.					
ELEC.					
MECH.					
STRU.					
CIVIL					
REV NO.	0	1	2	3	4

REV	DESCRIPTION OF REVISIONS	DATE	CHECK
0			

CLIENT:

JOB:  
 CONSULTANCY SERVICES FOR FEASIBILITY STUDY OF PRIORITY PROJECTS UNDER POLLUTION ABATEMENT OF RIVER GANGA IN VARANASI

DRAWING TITLE:  
 HARISHCHANDRA GHAT PUMPING STATION

CHECKED BY: SAURABH MISRA	APPROVED BY: V.N.SONTAKKE
DRAWN D.J.N.	SCALE 1:200
DESIGNED	DATE 12-04-2004
SURVEYED K.S.A.	
DRAWING NO. VNS-GPS-HRC	Sr. 40

THIS DRAWING CONTAINS CONFIDENTIAL PROPRIETARY INFORMATION OF MWH INDIA PVT. LTD. AND IS NOT TO BE DISCLOSED TO THE PUBLIC OR TO COMPETITORS UNLESS OTHERWISE AUTHORIZED IN WRITING BY MWH INDIA PVT. LTD.



NOTES:

INST.					
ELEC.					
MECH.					
STRU.					
CIVIL					
REV NO.	0	1	2	3	4

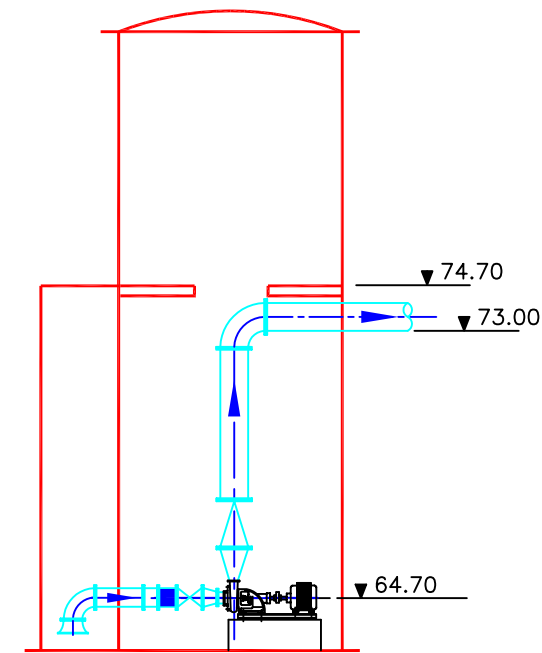
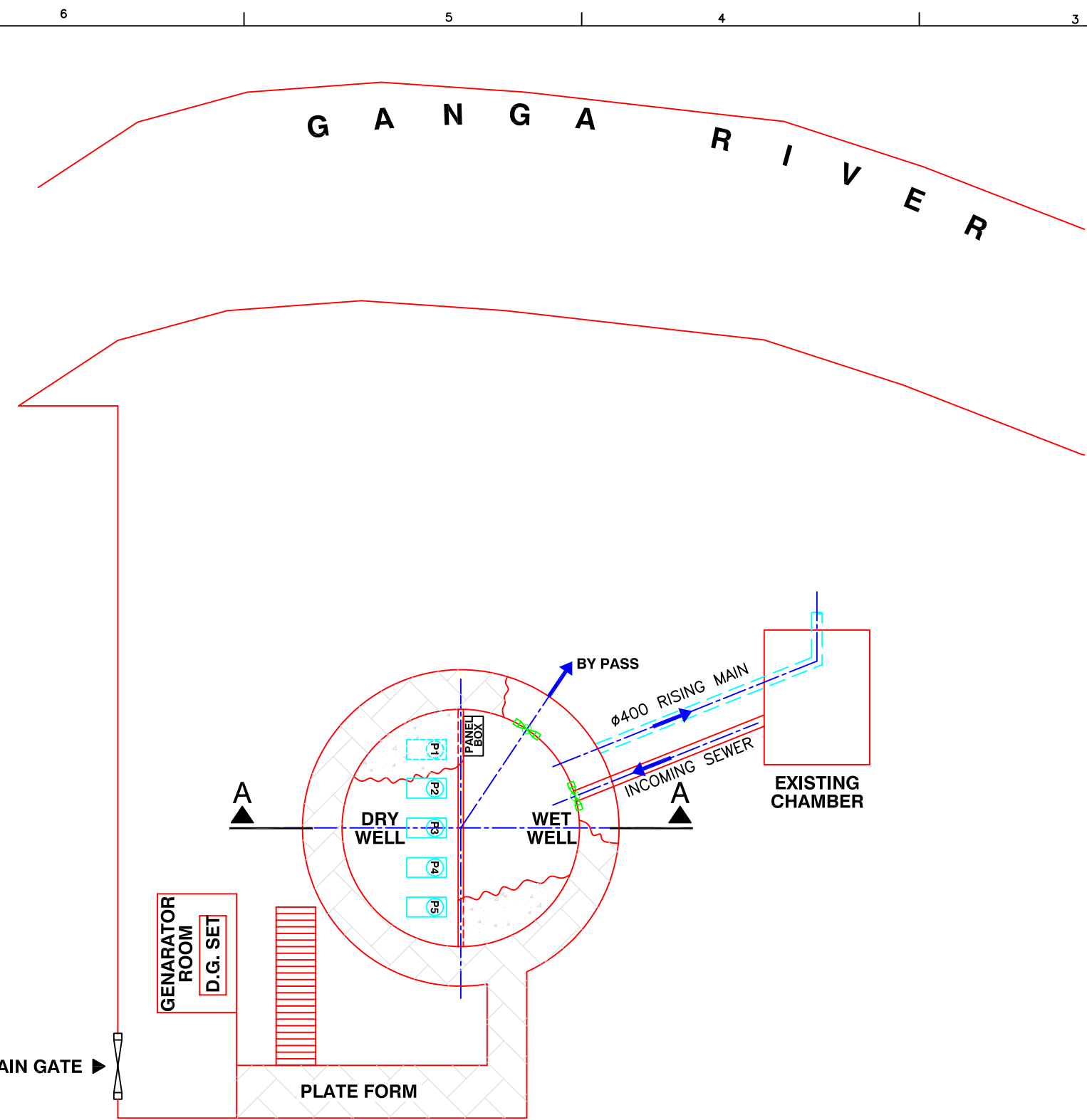
REV	DESCRIPTION OF REVISIONS	DATE	CHECK
0			

CLIENT:  
  
 JICA JAPAN INTERNATIONAL COOPERATION AGENCY  
 TOKYO ENGINEERING CONSULTANTS CO., LTD.  
 C.T.I. ENGINEERING INTERNATIONAL CO., LTD.

JOB:  
 CONSULTANCY SERVICES FOR FEASIBILITY STUDY OF PRIORITY PROJECTS UNDER POLLUTION ABATEMENT OF RIVER GANGA IN VARANASI

DRAWING TITLE:  
 MANSAROVAR GHAT PUMPING STATION

CHECKED BY: SAURABHA MISRA		APPROVED BY: V.N.SONTAKKE	
DRAWN	D.J.N.	SCALE	1:200
DESIGNED	K.S.A.	DATE	12-04-2004
DRAWING NO. VNS-GPS-MSV			Sr. 41



SECTION A-A

**LAYOUT PLAN OF EXISTING MANSAROVAR GHAT PUMPING STATION**

DETAILS OF EXISTING PUMPING STATION	
DIMENSIONS	9.0m.DIA. CIRCULAR SUMP CUM PUMP HOUSE SUMP FLOOR IS 11.00 m. BELOW THE OPERATING PLATFORM
INSTALLED CAPACITY	173 Ips.
INSTALLED PUMPS	2 x 10 HP - 1300 lpm @ 15 m. head 3 x 25 HP - 2600 lpm @ 21 m. head
D.G. SETS	1 x 100 KVA
RISING MAIN	400ø C.I.

THIS DRAWING CONTAINS CONFIDENTIAL PROPRIETARY INFORMATION OF MWH INDIA PVT. LTD. AND IS NOT TO BE DISCLOSED TO THE PUBLIC OR TO COMPETITORS UNLESS OTHERWISE AUTHORIZED IN WRITING BY MWH INDIA PVT. LTD.



NOTES:

INST.					
ELEC.					
MECH.					
STRU.					
CIVIL					
REV NO.	0	1	2	3	4

REV.	DESCRIPTION OF REVISIONS	DATE	CHECK
0			

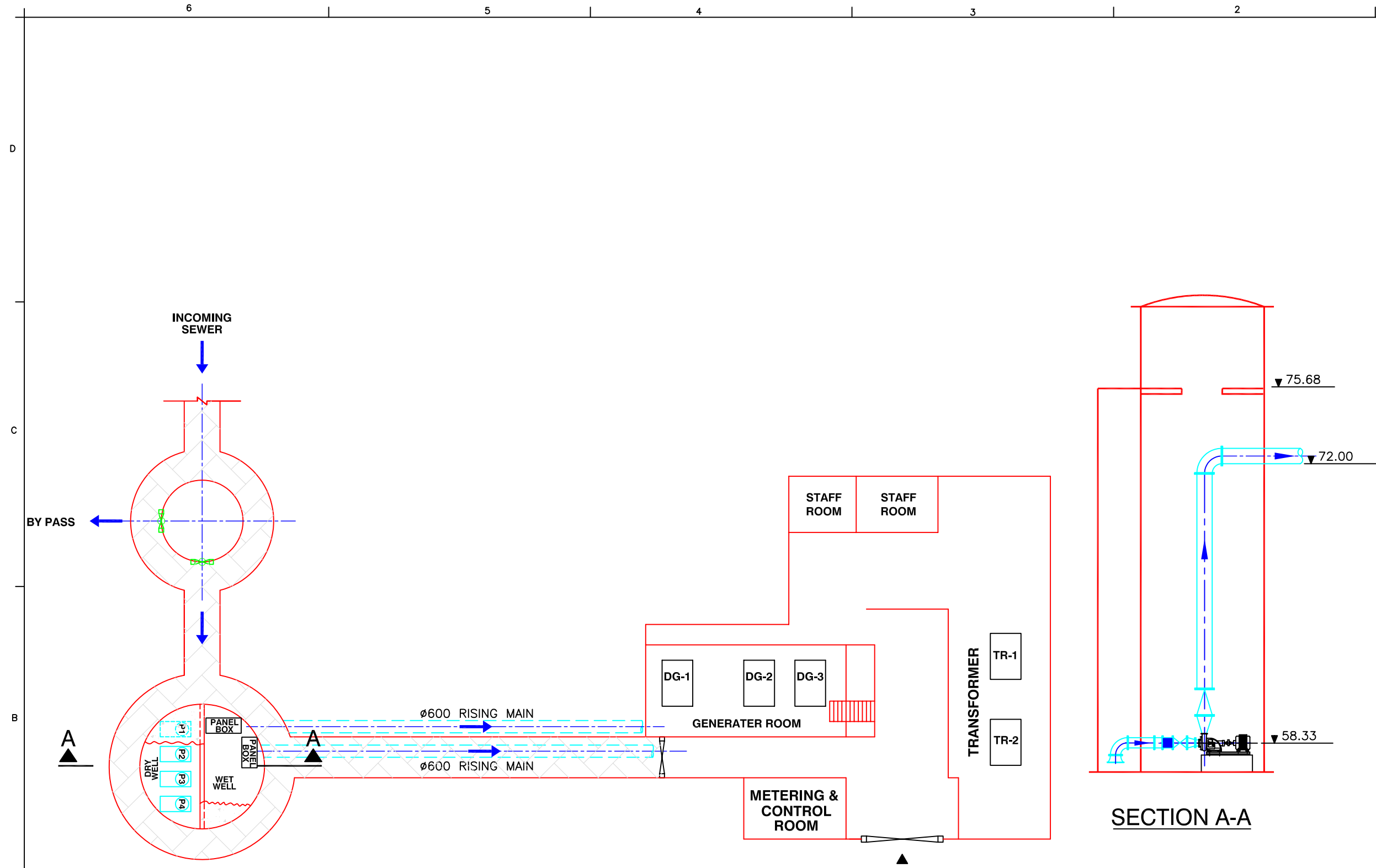
CLIENT:  
  
 JAPAN INTERNATIONAL COOPERATION AGENCY  
 TOKYO ENGINEERING CONSULTANTS CO., LTD.  
 C.T.I. ENGINEERING INTERNATIONAL CO., LTD.

JOB:  
 CONSULTANCY SERVICES FOR FEASIBILITY STUDY OF PRIORITY PROJECTS UNDER POLLUTION ABATEMENT OF RIVER GANGA IN VARANASI

DRAWING TITLE:  
 DR. RAJENDRA PRASAD GHAT PUMPING STATION

CHECKED BY: SAURABH MISRA	APPROVED BY: V.N.SONTAKKE
DRAWN D.J.N.	DESIGNED K.S.A.
SURVEYED K.S.A.	DATE 12/04/2004

DRAWING NO.  
**VNS-GPS-DRP**



**LAYOUT PLAN OF EXISTING RAJENDRAPRASAD GHAT PUMPING STATION**

DETAILS OF EXISTING PUMPING STATION	
DIMENSIONS	6.1m.DIA. CIRCULAR SUMP CUM PUMP HOUSE SUMP FLOOR IS 18.3 m. BELOW THE OPERATING PLATFORM
INSTALLED CAPACITY	793 lps.
INSTALLED PUMPS	2 x 125 HP - 15000 lpm @ 23 m. head 2 x 75 HP - 8800 lpm @ 22 m. head
D.G. SETS	3 x 160 KVA
RISING MAIN	1 x 350ø + 1 x 450ø CONNECTED TO 2 x 600ø C.I.

THIS DRAWING CONTAINS CONFIDENTIAL PROPRIETARY INFORMATION OF MWH INDIA PVT. LTD. AND IS NOT TO BE DISCLOSED TO THE PUBLIC OR TO COMPETITORS UNLESS OTHERWISE AUTHORISED IN WRITING BY MWH INDIA PVT. LTD.



NOTES:

INST.					
ELEC.					
MECH.					
STRU.					
CIVIL					
REV NO.	0	1	2	3	4

REV.	DESCRIPTION OF REVISIONS	DATE	CHECK
0			

CLIENT:  
  
 JAPAN INTERNATIONAL COOPERATION AGENCY  
 TOKYO ENGINEERING CONSULTANTS CO., LTD.  
 CTI ENGINEERING INTERNATIONAL CO., LTD.

JOB:  
 CONSULTANCY SERVICES FOR FEASIBILITY STUDY OF PRIORITY PROJECTS UNDER POLLUTION ABATEMENT OF RIVER GANGA IN VARANASI

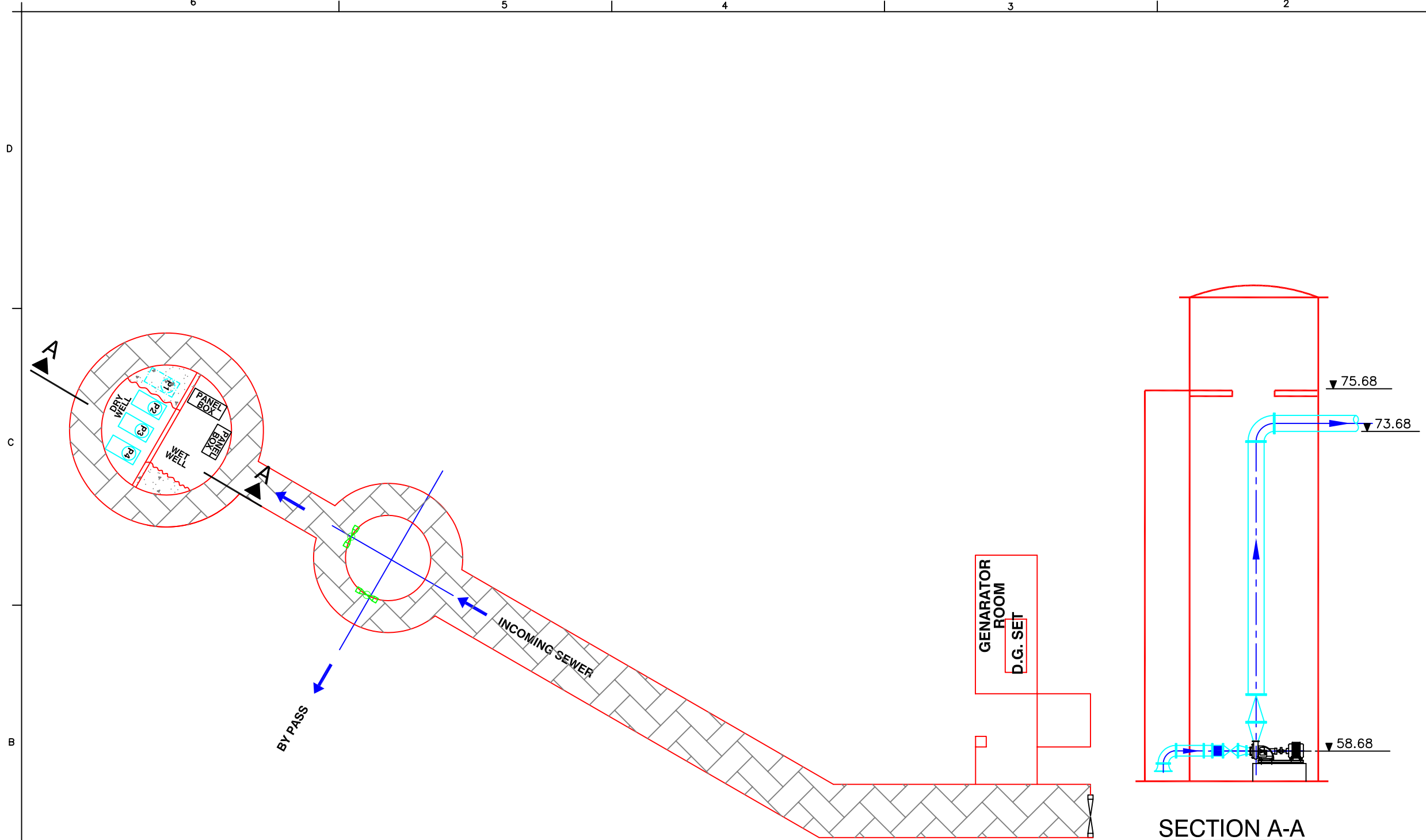
DRAWING TITLE:  
 JALESAN GHAT PUMPING STATION

CHECKED BY: SAURABH MISRA  
 APPROVED BY: V.N.SONTAKKE

DRAWN D.J.N. SCALE 1:200

DESIGNED SURVEYED K.S.A. DATE 12-04-2004

DRAWING NO. VNS-GPS-JSN Sr. 43



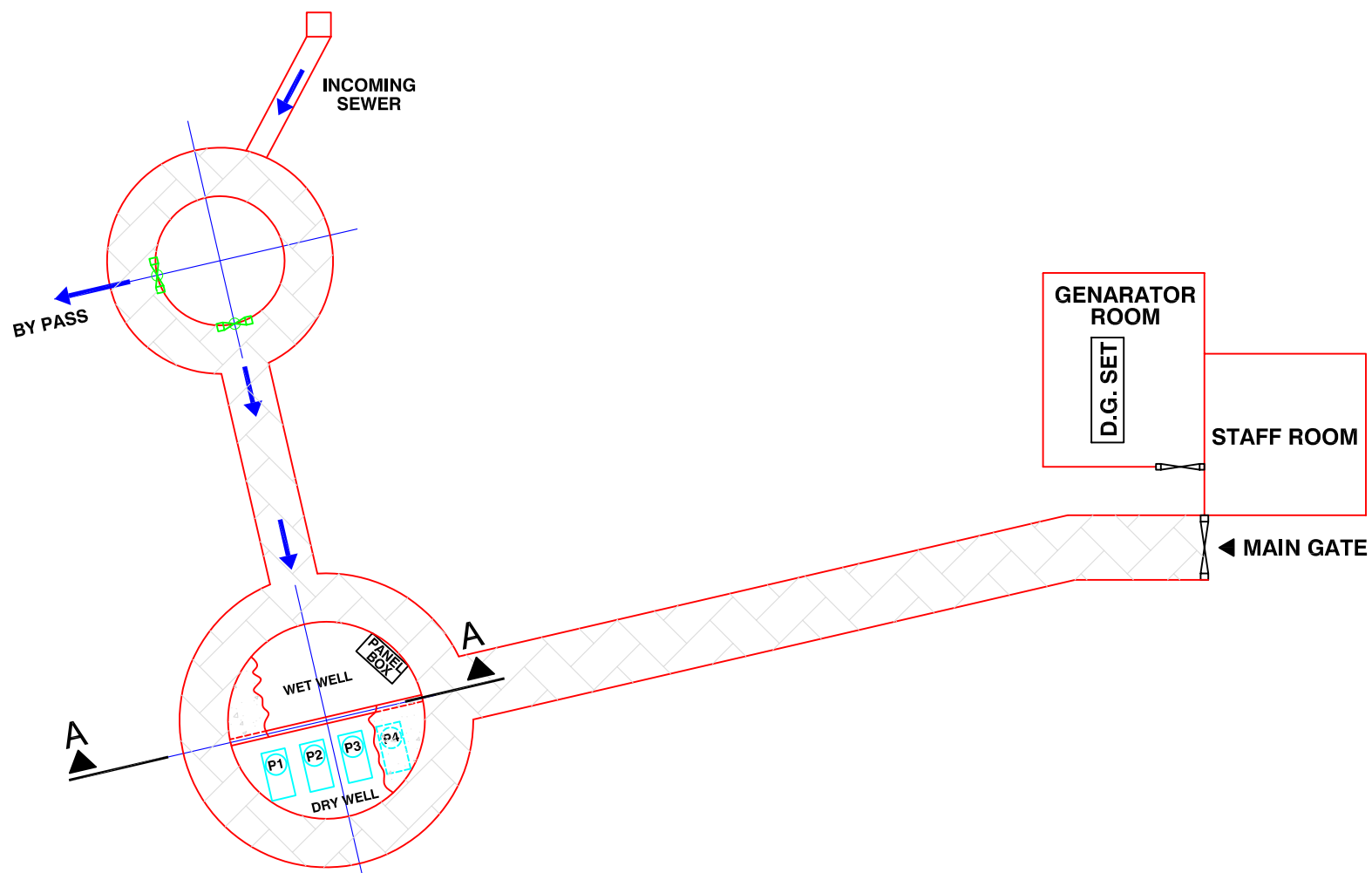
**LAYOUT PLAN OF EXISTING JALESAN GHAT PUMPING STATION**

DETAILS OF EXISTING PUMPING STATION	
DIMENSIONS	6.1m.DIA. CIRCULAR SUMP CUM PUMP HOUSE SUMP FLOOR IS 16.3 m. BELOW THE OPERATING PLATFORM
INSTALLED CAPACITY	160 lps.
INSTALLED PUMPS	2 x 30 HP - 3600 lpm @ 20 m. head 2 x 15 HP - 1200 lpm @ 15 m. head
D.G. SETS	1 x 70 KVA
RISING MAIN	250ø C.I. CONNECTED TO 600ø RM FROM DR. R.P. GHAT SPS

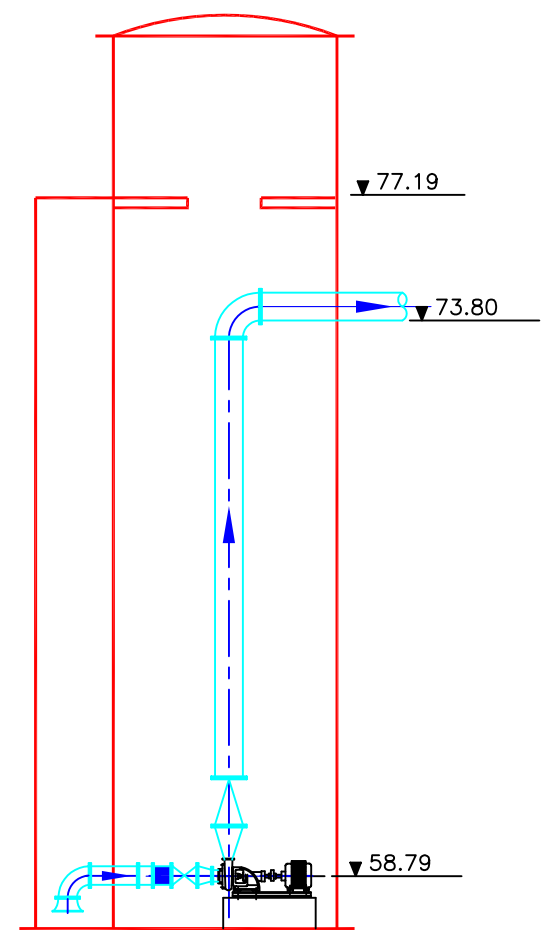
THIS DRAWING CONTAINS CONFIDENTIAL PROPRIETARY INFORMATION OF MWH INDIA PVT. LTD. AND IS NOT TO BE DISCLOSED TO THE PUBLIC OR TO COMPETITORS UNLESS OTHERWISE AUTHORISED IN WRITING BY MWH INDIA PVT. LTD.



NOTES:



**LAYOUT PLAN OF EXISTING TRILOCHAN GHAT PUMPING STATION**



**SECTION A-A**

DETAILS OF EXISTING PUMPING STATION	
DIMENSIONS	6.1m.DIA. CIRCULAR SUMP CUM PUMP HOUSE SUMP FLOOR IS 18.3 m. BELOW THE OPERATING PLATFORM
INSTALLED CAPACITY	182 lps.
INSTALLED PUMPS	2 x 35 HP - 4100 lpm @ 20 m. head 2 x 12.5 HP - 1365 lpm @ 18 m. head
D.G. SETS	1 x 70 KVA
RISING MAIN	300Ø C.I.

INST.					
ELEC.					
MECH.					
STRU.					
CIVIL					
REV NO.	0	1	2	3	4

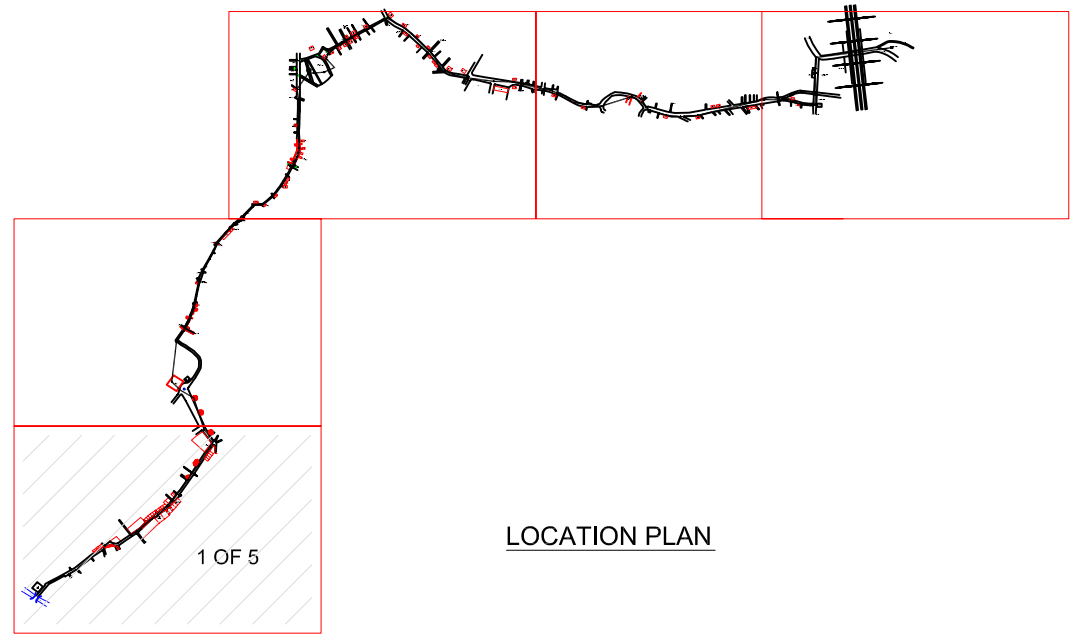
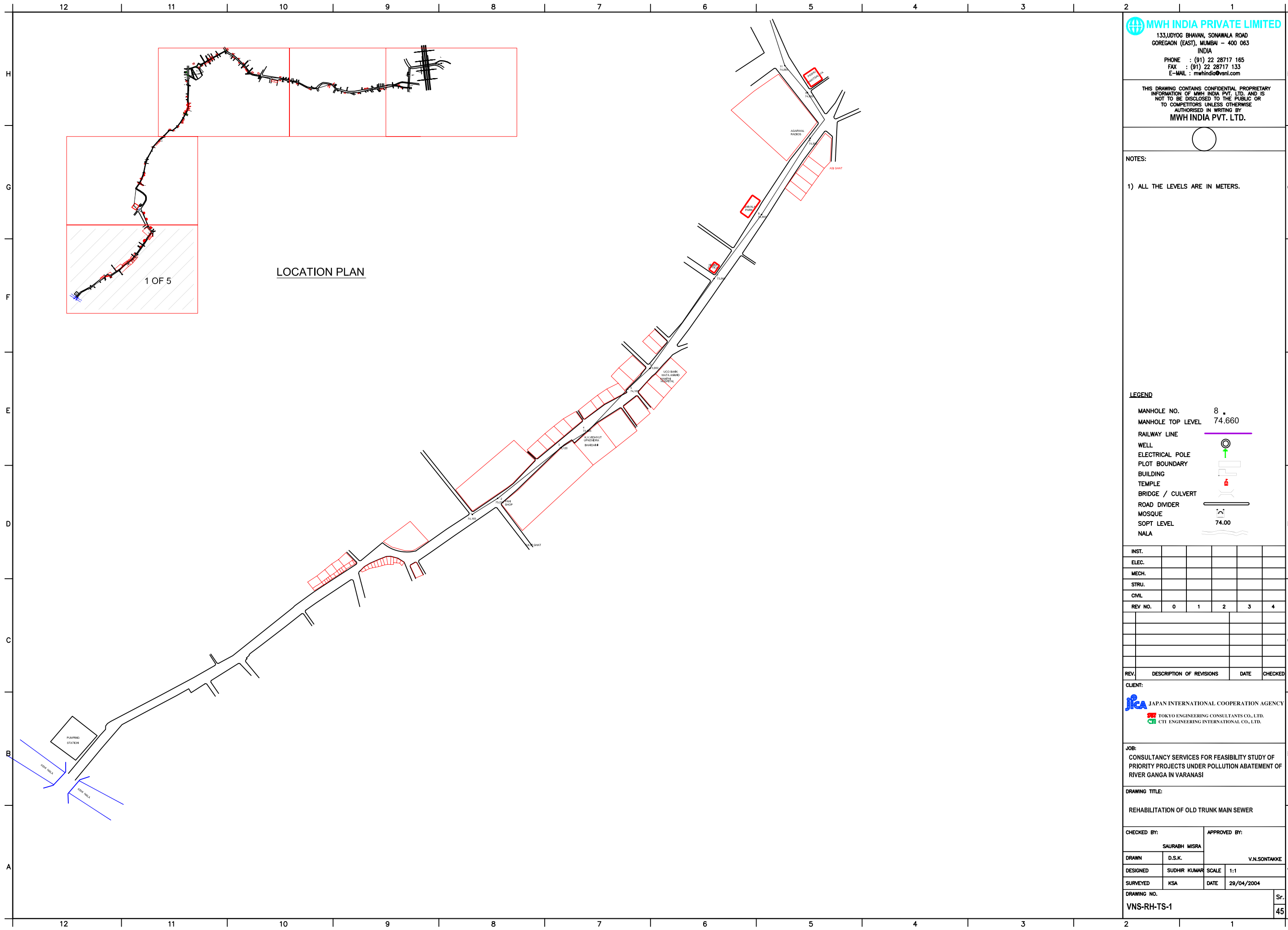
REV	DESCRIPTION OF REVISIONS	DATE	CHECK
0			

CLIENT:

JOB:  
 CONSULTANCY SERVICES FOR FEASIBILITY STUDY OF PRIORITY PROJECTS UNDER POLLUTION ABATEMENT OF RIVER GANGA IN VARANASI

DRAWING TITLE:  
 TRILOKCHAN GHAT PUMPING STATION

CHECKED BY: SAURABH MISRA	APPROVED BY: V.N.SONTAKKE
DRAWN D.J.N.	SCALE 1:200
DESIGNED K.S.A.	DATE 12-04-2004
DRAWING NO. VNS-GPS-TLC	Sr. 44



LOCATION PLAN

**MWH INDIA PRIVATE LIMITED**  
 133, LIDYOG BHAVAN, SONAWALA ROAD  
 GOREGAON (EAST), MUMBAI - 400 063  
 INDIA  
 PHONE : (91) 22 28717 165  
 FAX : (91) 22 28717 133  
 E-MAIL : mwhindia@vsnl.com

THIS DRAWING CONTAINS CONFIDENTIAL PROPRIETARY INFORMATION OF MWH INDIA PVT. LTD. AND IS NOT TO BE DISCLOSED TO THE PUBLIC OR TO COMPETITORS UNLESS OTHERWISE AUTHORIZED IN WRITING BY MWH INDIA PVT. LTD.

NOTES:  
 1) ALL THE LEVELS ARE IN METERS.

**LEGEND**

MANHOLE NO.	8
MANHOLE TOP LEVEL	74.660
RAILWAY LINE	
WELL	
ELECTRICAL POLE	
PLOT BOUNDARY	
BUILDING	
TEMPLE	
BRIDGE / CULVERT	
ROAD DIVIDER	
MOSQUE	
SOPT LEVEL	74.00
NALA	

INST.					
ELEC.					
MECH.					
STRU.					
CIVIL					
REV NO.	0	1	2	3	4

CLIENT:  
 JAPAN INTERNATIONAL COOPERATION AGENCY  
 TOKYO ENGINEERING CONSULTANTS CO., LTD.  
 CEI ENGINEERING INTERNATIONAL CO., LTD.

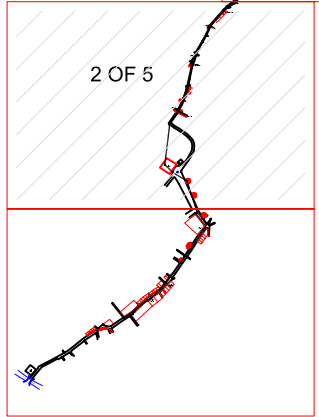
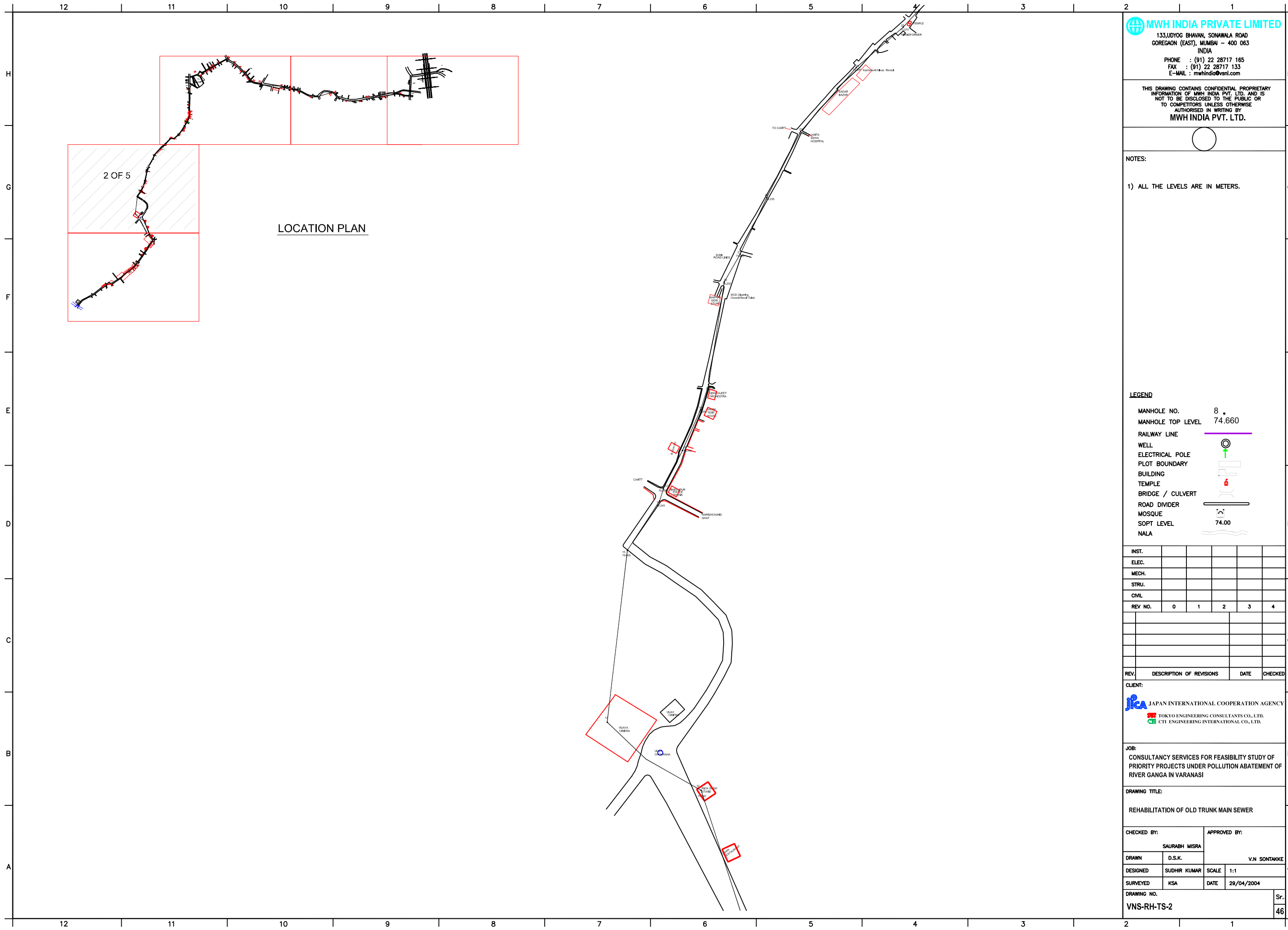
JOB:  
 CONSULTANCY SERVICES FOR FEASIBILITY STUDY OF PRIORITY PROJECTS UNDER POLLUTION ABATEMENT OF RIVER GANGA IN VARANASI

DRAWING TITLE:  
 REHABILITATION OF OLD TRUNK MAIN SEWER

CHECKED BY: SAURABH MISRA		APPROVED BY: V.N.SONTAKKE	
DRAWN D.S.K.	DESIGNED SUDHIR KUMAR	SCALE 1:1	
SURVEYED KSA	DATE 29/04/2004		

DRAWING NO.  
 VNS-RH-TS-1

Sr.  
45



LOCATION PLAN

**MWH INDIA PRIVATE LIMITED**  
 133, LIDYOG BHAVAN, SONAWALA ROAD  
 GOREGAON (EAST), MUMBAI - 400 063  
 INDIA  
 PHONE : (91) 22 28717 165  
 FAX : (91) 22 28717 133  
 E-MAIL : mwhindia@vsnl.com

THIS DRAWING CONTAINS CONFIDENTIAL PROPRIETARY INFORMATION OF MWH INDIA PVT. LTD. AND IS NOT TO BE DISCLOSED TO THE PUBLIC OR TO COMPETITORS UNLESS OTHERWISE AUTHORIZED IN WRITING BY MWH INDIA PVT. LTD.

NOTES:  
 1) ALL THE LEVELS ARE IN METERS.

**LEGEND**

MANHOLE NO.	8
MANHOLE TOP LEVEL	74.660
RAILWAY LINE	
WELL	
ELECTRICAL POLE	
PLOT BOUNDARY	
BUILDING	
TEMPLE	
BRIDGE / CULVERT	
ROAD DIVIDER	
MOSQUE	
SOPT LEVEL	74.00
NALA	

INST.					
ELEC.					
MECH.					
STRU.					
CIVIL					
REV NO.	0	1	2	3	4

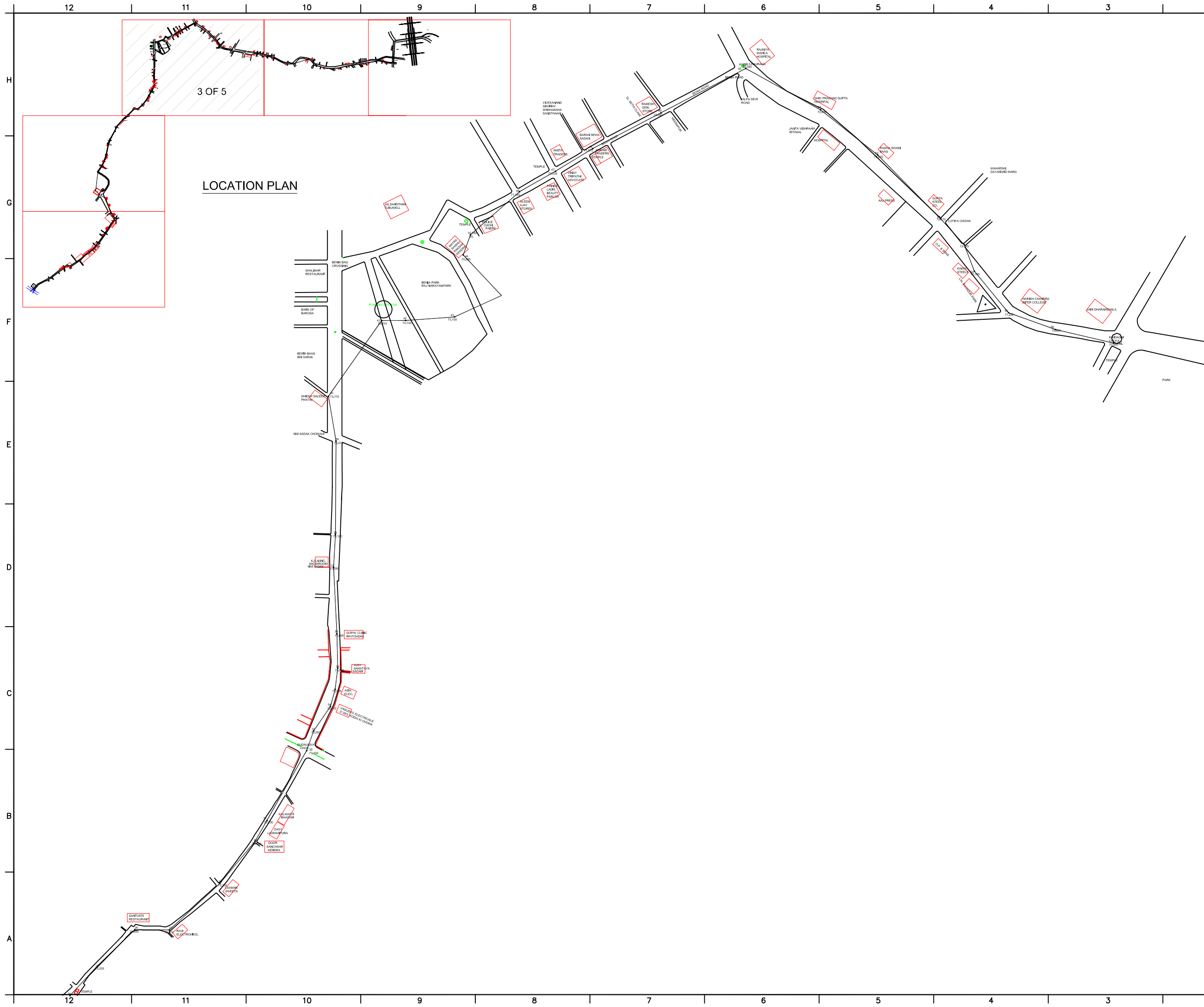
CLIENT:  
 JAPAN INTERNATIONAL COOPERATION AGENCY  
 TOKYO ENGINEERING CONSULTANTS CO., LTD.  
 CTI ENGINEERING INTERNATIONAL CO., LTD.

JOB:  
 CONSULTANCY SERVICES FOR FEASIBILITY STUDY OF PRIORITY PROJECTS UNDER POLLUTION ABATEMENT OF RIVER GANGA IN VARANASI

DRAWING TITLE:  
 REHABILITATION OF OLD TRUNK MAIN SEWER

CHECKED BY:	APPROVED BY:
SAURABH MISRA	V.N. SONTAKKE
DRAWN	D.S.K.
DESIGNED	SUDHIR KUMAR
SURVEYED	KSA
SCALE	1:1
DATE	29/04/2004

DRAWING NO.  
 VNS-RH-TS-2



**LOCATION PLAN**

**MWH INDIA PRIVATE LIMITED**  
 133, LUDYOG BHAVAN, SONAWALA ROAD  
 GOREGAON (EAST), MUMBAI - 400 063  
 INDIA  
 PHONE : (91) 22 28717 165  
 FAX : (91) 22 28717 133  
 E-MAIL : mwhindia@vsnl.com

THIS DRAWING CONTAINS CONFIDENTIAL PROPRIETARY INFORMATION OF MWH INDIA PVT. LTD. AND IS NOT TO BE DISCLOSED TO THE PUBLIC OR TO COMPETITORS UNLESS OTHERWISE AUTHORISED IN WRITING BY MWH INDIA PVT. LTD.

NOTES:  
 1) ALL THE LEVELS ARE IN METERS.

**LEGEND**

MANHOLE NO.	8
MANHOLE TOP LEVEL	74.660
RAILWAY LINE	
WELL	
ELECTRICAL POLE	
PLOT BOUNDARY	
BUILDING	
TEMPLE	
BRIDGE / CULVERT	
ROAD DIVIDER	
MOSQUE	
SOFT LEVEL	74.00
NALA	

INST.					
ELEC.					
MECH.					
STRU.					
CIVIL					
REV NO.	0	1	2	3	4

CLIENT:  
 JAPAN INTERNATIONAL COOPERATION AGENCY  
 TOKYO ENGINEERING CONSULTANTS CO., LTD.  
 CTI ENGINEERING INTERNATIONAL CO., LTD.

JOB:  
 CONSULTANCY SERVICES FOR FEASIBILITY STUDY OF PRIORITY PROJECTS UNDER POLLUTION ABATEMENT OF RIVER GANGA IN VARANASI

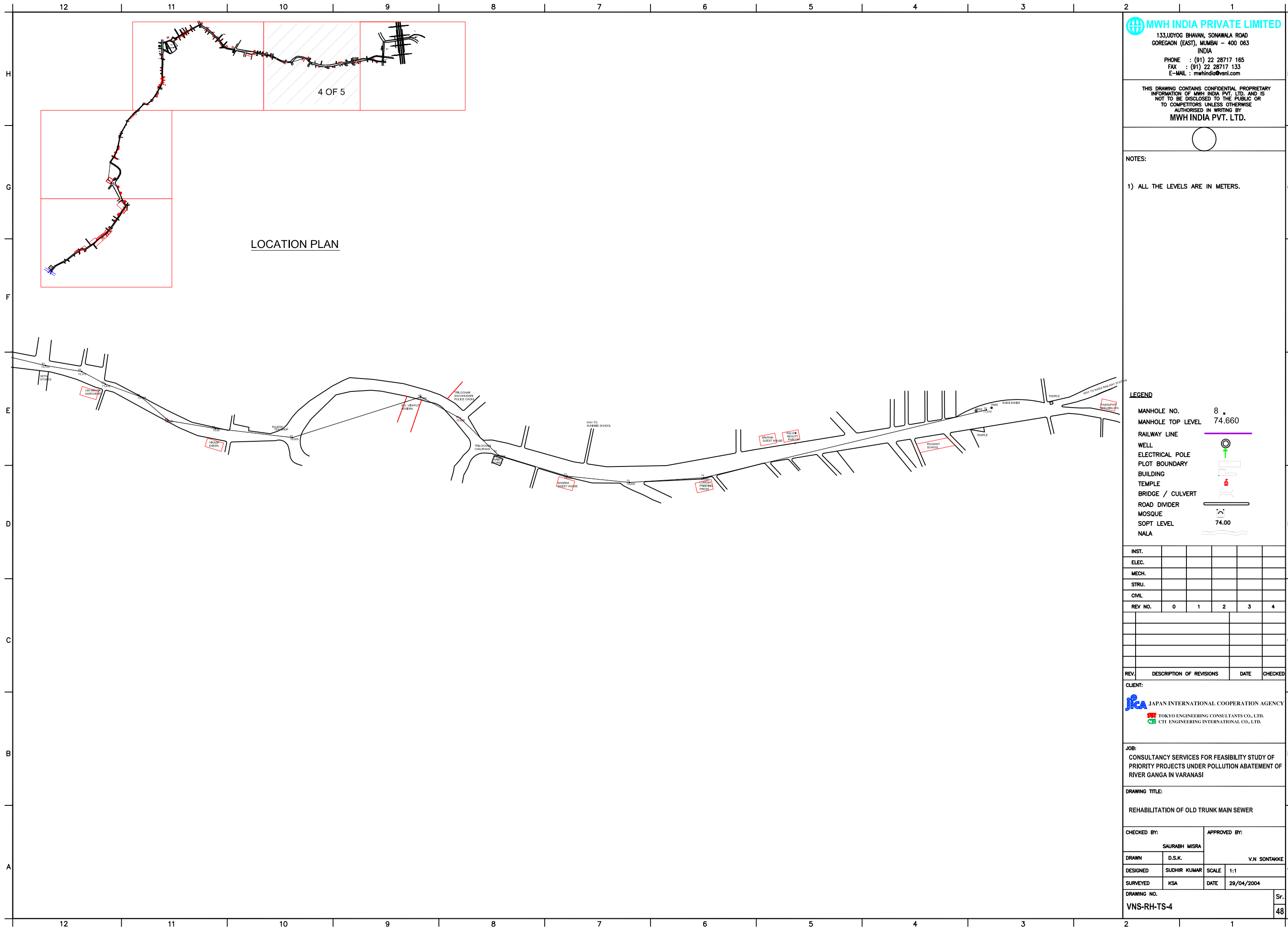
DRAWING TITLE:  
 REHABILITATION OF OLD TRUNK MAIN SEWER

CHECKED BY: SAURABH MISRA	APPROVED BY: V.N. SONTAKKE
DRAWN D.S.K.	SCALE 1:1
DESIGNED SUDHIR KUMAR	DATE 29/04/2004
SURVEYED KSA	

DRAWING NO.  
 VNS-RH-TS-3

Sr.  
47





**MWH INDIA PRIVATE LIMITED**  
 133, LUDYOG BHAVAN, SONAWALA ROAD  
 GOREGAON (EAST), MUMBAI - 400 063  
 INDIA  
 PHONE : (91) 22 28717 165  
 FAX : (91) 22 28717 133  
 E-MAIL : mwhindia@vsnl.com

THIS DRAWING CONTAINS CONFIDENTIAL PROPRIETARY INFORMATION OF MWH INDIA PVT. LTD. AND IS NOT TO BE DISCLOSED TO THE PUBLIC OR TO COMPETITORS UNLESS OTHERWISE AUTHORIZED IN WRITING BY MWH INDIA PVT. LTD.

NOTES:  
 1) ALL THE LEVELS ARE IN METERS.

**LEGEND**

MANHOLE NO.	8
MANHOLE TOP LEVEL	74.660
RAILWAY LINE	
WELL	
ELECTRICAL POLE	
PLOT BOUNDARY	
BUILDING	
TEMPLE	
BRIDGE / CULVERT	
ROAD DIVIDER	
MOSQUE	
SOPT LEVEL	74.00
NALA	

INST.					
ELEC.					
MECH.					
STRU.					
CIVIL					
REV NO.	0	1	2	3	4

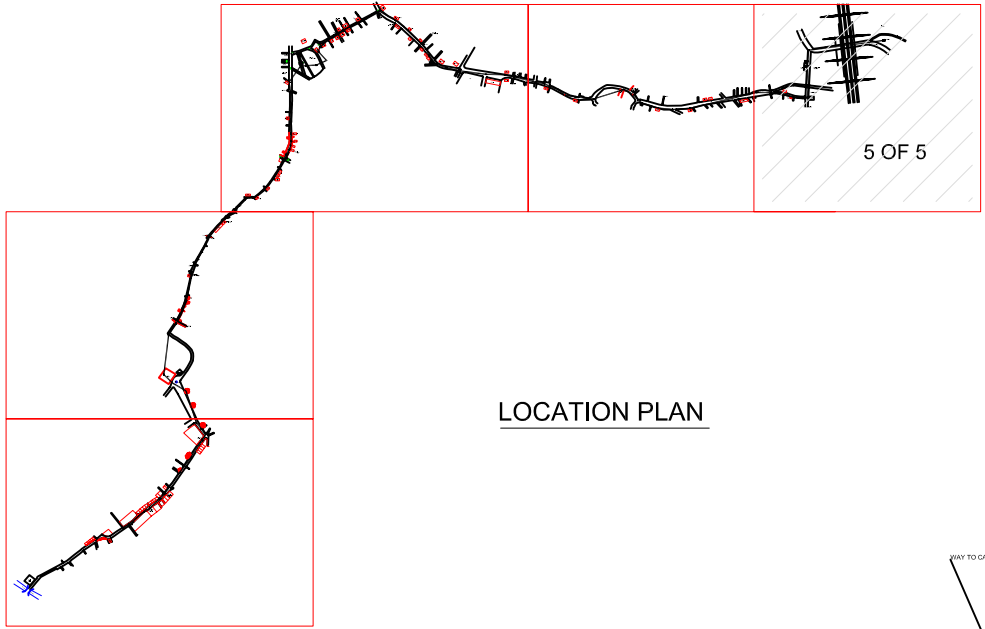
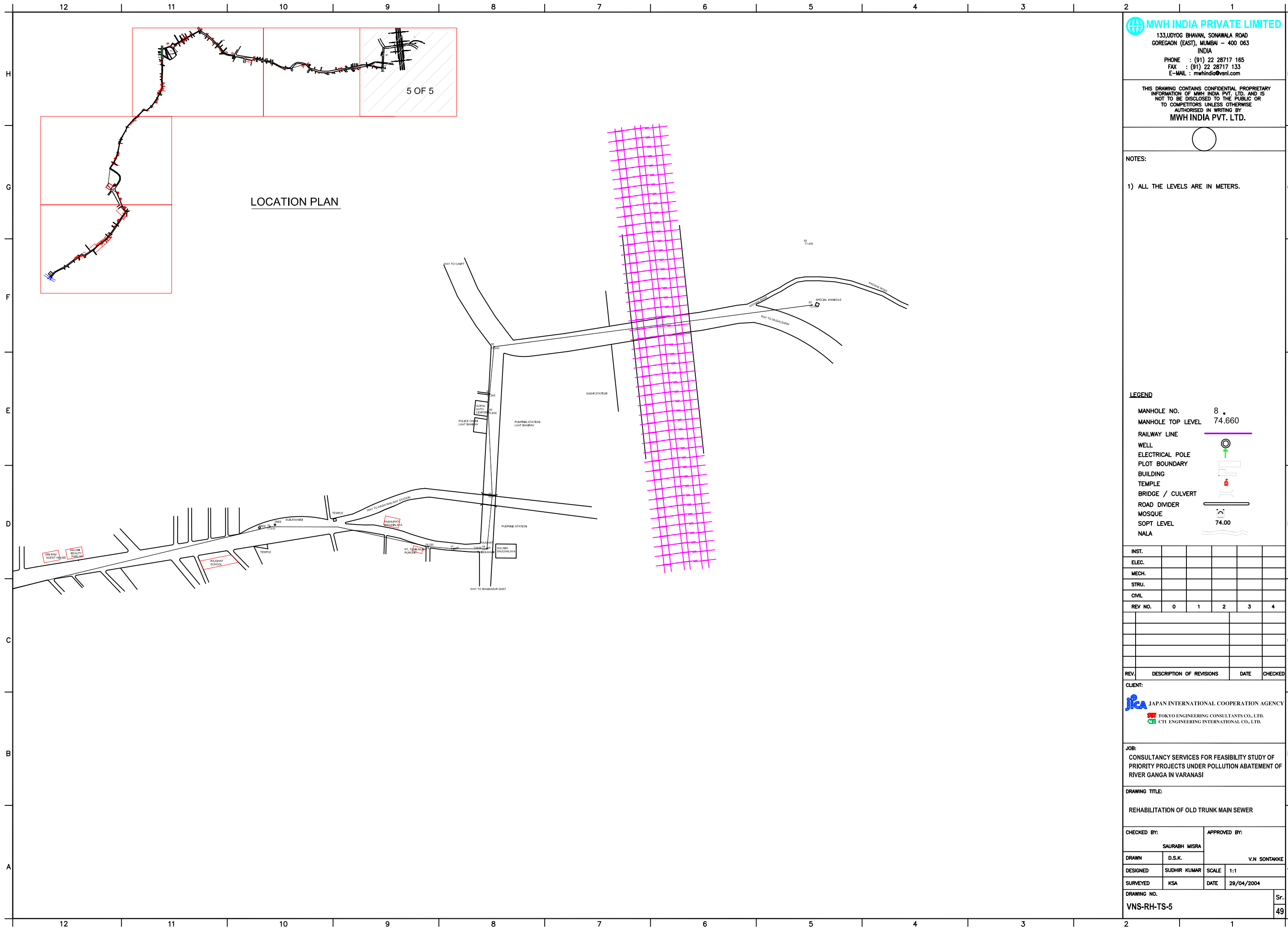
CLIENT:  
 JAPAN INTERNATIONAL COOPERATION AGENCY  
 TOKYO ENGINEERING CONSULTANTS CO., LTD.  
 CITI ENGINEERING INTERNATIONAL CO., LTD.

JOB:  
 CONSULTANCY SERVICES FOR FEASIBILITY STUDY OF PRIORITY PROJECTS UNDER POLLUTION ABATEMENT OF RIVER GANGA IN VARANASI

DRAWING TITLE:  
 REHABILITATION OF OLD TRUNK MAIN SEWER

CHECKED BY: SAURABH MISRA		APPROVED BY: V.N SONTAKKE	
DRAWN SUDHIR KUMAR	D.S.K.	SCALE 1:1	
SURVEYED KSA	DATE 29/04/2004		

DRAWING NO.  
 VNS-RH-TS-4



LOCATION PLAN

5 OF 5

**MWH INDIA PRIVATE LIMITED**  
 133, LIDYOG BHAVAN, SONAWALA ROAD  
 GOREGAON (EAST), MUMBAI - 400 063  
 INDIA  
 PHONE : (91) 22 28717 165  
 FAX : (91) 22 28717 133  
 E-MAIL : mwhindia@vsnl.com

THIS DRAWING CONTAINS CONFIDENTIAL PROPRIETARY INFORMATION OF MWH INDIA PVT. LTD. AND IS NOT TO BE DISCLOSED TO THE PUBLIC OR TO COMPETITORS UNLESS OTHERWISE AUTHORIZED IN WRITING BY MWH INDIA PVT. LTD.

NOTES:  
 1) ALL THE LEVELS ARE IN METERS.

**LEGEND**

MANHOLE NO.	8
MANHOLE TOP LEVEL	74.660
RAILWAY LINE	
WELL	
ELECTRICAL POLE	
PLOT BOUNDARY	
BUILDING	
TEMPLE	
BRIDGE / CULVERT	
ROAD DIVIDER	
MOSQUE	
SOFT LEVEL	74.00
NALA	

INST.					
ELEC.					
MECH.					
STRU.					
CIVIL					
REV NO.	0	1	2	3	4

CLIENT:  
 JAPAN INTERNATIONAL COOPERATION AGENCY  
 TOKYO ENGINEERING CONSULTANTS CO., LTD.  
 CEI ENGINEERING INTERNATIONAL CO., LTD.

JOB:  
 CONSULTANCY SERVICES FOR FEASIBILITY STUDY OF PRIORITY PROJECTS UNDER POLLUTION ABATEMENT OF RIVER GANGA IN VARANASI

DRAWING TITLE:  
 REHABILITATION OF OLD TRUNK MAIN SEWER

CHECKED BY: SAURABH MISRA		APPROVED BY: V.N SONTAKKE	
DESIGNED SUDHIR KUMAR	SCALE 1:1	DATE 29/04/2004	

DRAWING NO.  
**VNS-RH-TS-5**

THIS DRAWING CONTAINS CONFIDENTIAL PROPRIETARY INFORMATION OF MWH INDIA PVT. LTD. AND IS NOT TO BE DISCLOSED TO THE PUBLIC OR TO COMPETITORS UNLESS OTHERWISE AUTHORIZED IN WRITING BY MWH INDIA PVT. LTD.

**NOTES:**

- PLEASE DO NOT SCALE THE DRAWING ONLY WRITTEN DIMENSIONS ARE TO BE FOLLOWED
- ALL DIMENSIONS ARE IN MM AND ALL LEVELS ARE IN METRE.

INST.					
ELEC.					
MECH.					
STRU.					
CIVIL					
REV NO.	0	1	2	3	4

REV.	DESCRIPTION OF REVISIONS	DATE	CHECKED

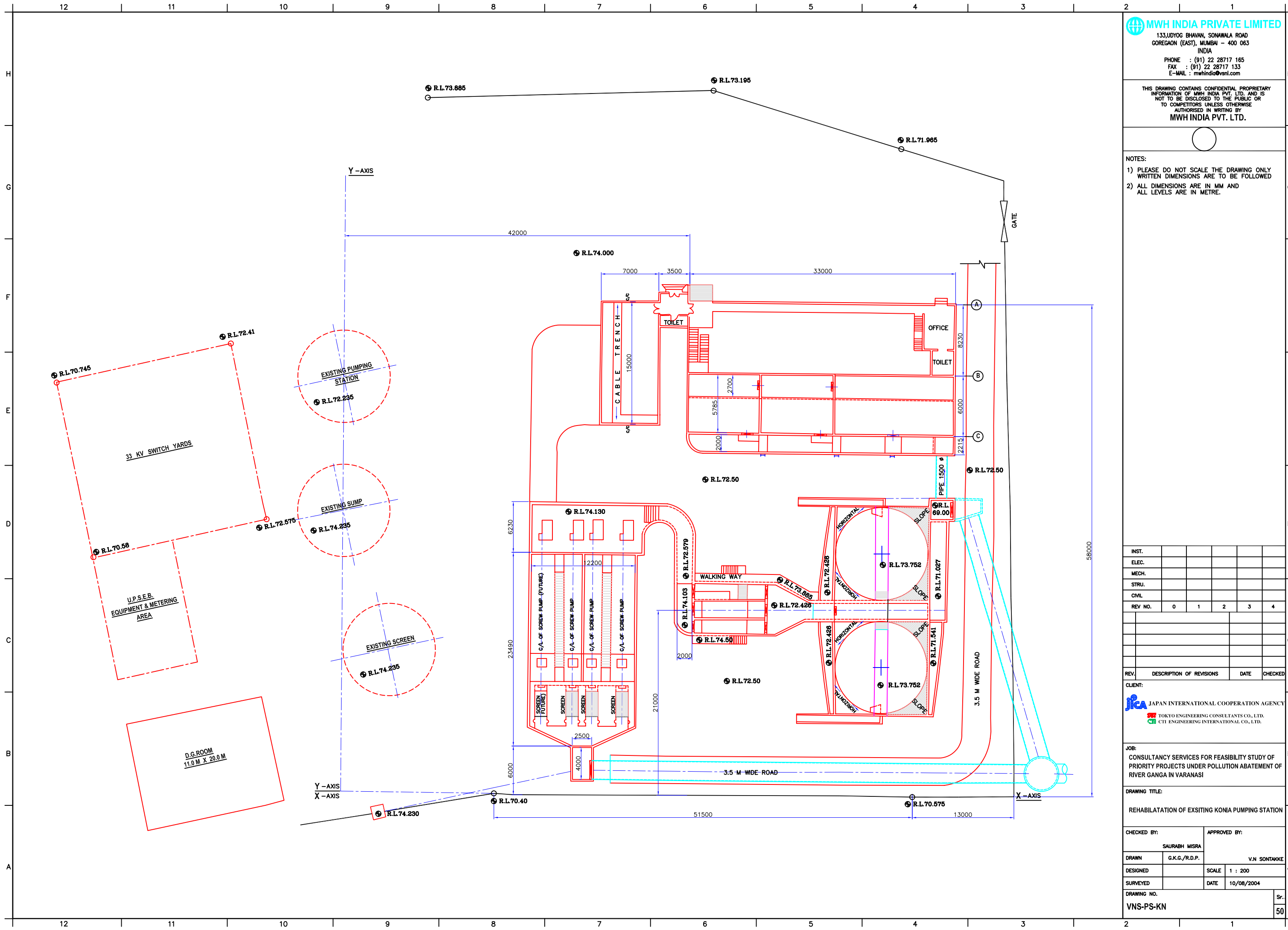
CLIENT:  
 JAPAN INTERNATIONAL COOPERATION AGENCY  
 TOKYO ENGINEERING CONSULTANTS CO., LTD.  
 CTE ENGINEERING INTERNATIONAL CO., LTD.

JOB:  
 CONSULTANCY SERVICES FOR FEASIBILITY STUDY OF PRIORITY PROJECTS UNDER POLLUTION ABATEMENT OF RIVER GANGA IN VARANASI

DRAWING TITLE:  
 REHABILITATION OF EXSITING KONIA PUMPING STATION

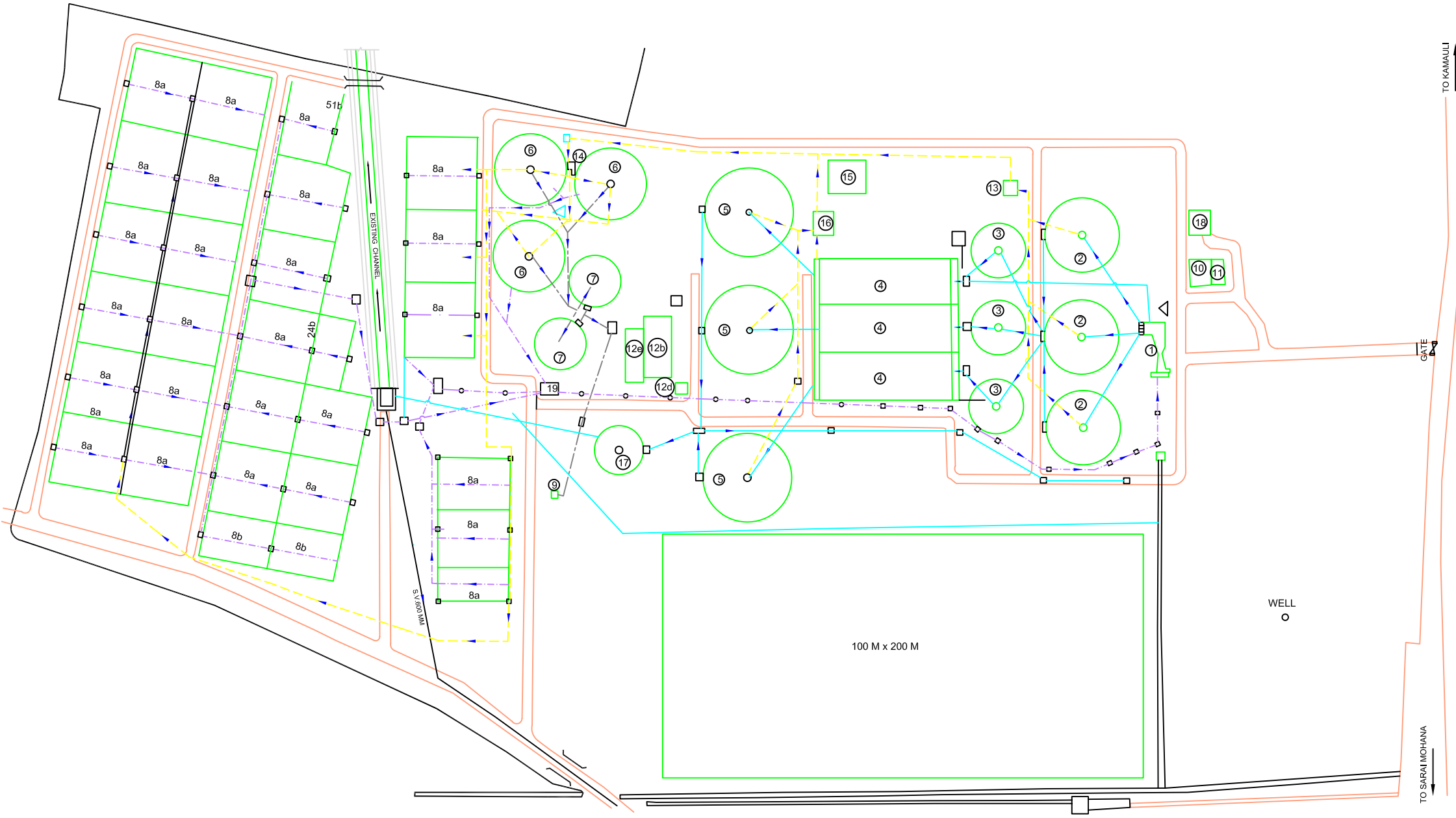
CHECKED BY: SAURABH MISRA	APPROVED BY: V.N. SONTAKKE
DRAWN G.K.G./R.D.P.	SCALE 1 : 200
DESIGNED	DATE 10/08/2004

DRAWING NO.  
**VNS-PS-KN**





NOTES:



**LEGEND:-**

PROCESS LINE ————

SLUDGE LINE - - - - -

FILTRATE LINE - - - - -

GAS LINE - - - - -

INST.					
ELEC.					
MECH.					
STRU.					
CIVIL					
REV. NO.	0	1	2	3	4

REV.	DESCRIPTION OF REVISIONS	DATE	CHECKED
------	--------------------------	------	---------

**CLIENT:**

**JICA** JAPAN INTERNATIONAL COOPERATION AGENCY  
**TEC** TOKYO ENGINEERING CONSULTANTS CO., LTD.  
**CEI** CTT ENGINEERING INTERNATIONAL CO., LTD.

**JOB:**  
 CONSULTANCY SERVICES FOR FEASIBILITY STUDY OF PRIORITY PROJECTS UNDER POLLUTION ABATEMENT OF RIVER GANGA IN VARANASI

**DRAWING TITLE:**  
 REHABILITATION OF EXISTING STP AT DINAPUR

**CHECKED BY:** SAURABH MISRA  
**APPROVED BY:** V.N.SONTAKKE

**DESIGNED:** D.S.K. **SCALE:** 1:1000  
**SURVEYED:** DATE: 22/07/2004

**DRAWING NO.:** VNS-STP-DNP **Sr.:** 51

**LEGEND:-**

SR.NO.	UNITS	QTY.	SIZE
1	PARSHALL FLUME INLET CHAMBER	1	12.00 X 3.00 M
2	PRIMARY CLARIFIERS	3	31.50 M Ø X 3.50 M SWD
3	ROUGHENING TRICKLING FILTERS	3	22.50 MØ X 1.0 M SWD
4	AERATION TANKS	3	20.00 X 60.00M EACH
5	SECONDARY CLARIFIERS	3	40MØ X 3.50 M SWD
6	DIGESTERS	3	25.0 M Ø X 8.0 M (3.50M HOPPER DEPTH)
7	GAS HOLDERS	2	21.50 M Ø X 7.00 M
8	SLUDGE DRYING BEDS		24500 SQ.MTRS
9	GAS BURNERS	2	

SR.NO.	UNITS	QTY.	SIZE
10	LAB. AND ADMN. BUILDING	1	300 SQ.MTRS EACH
12	a- GAS COMPRESSOR, b-DIESEL ENGINE ROOM c-COOLING TOWER, d-DIESEL TANKS e- CONTROL ROOM		
13	PRIMARY SLUDGE PUMP HOUSE		
14	CONTROL ROOM FOR DIGESTERS		
15	WORKSHOP		200 SQ.MTRS PLINTH AREA
16	RETURN SLUDGE PUMP HOUSE		
17	TREATED EFFLUENT PUMP HOUSE		
18	GARRAGE		80 SQ.MTRS
19	FILTRATE PUMP HOUSE		

12 11 10 9 8 7 6 5 4 3 2 1

THIS DRAWING CONTAINS CONFIDENTIAL PROPRIETARY INFORMATION OF MWH INDIA PVT. LTD. AND IS NOT TO BE DISCLOSED TO THE PUBLIC OR TO COMPETITORS UNLESS OTHERWISE AUTHORIZED IN WRITING BY MWH INDIA PVT. LTD.



NOTES:

**LEGEND**

SR.NO.	UNITS	QTY.	SIZE
1	INLET CHAMBER	1	1.20M. X 1.20M.
2	BAR SCREEN CHANNEL	2	2.0M. X 0.50M. X 1.0M. LD
3	GRIT CHAMBER	2	7.15M. X 1.20M. X 1.30M.LD
4	PARSHALL FLUME	1	350 MM
5	PRIMARY SETTLING TANK	2	14.60M.Ø X 3.0M.SWD
6	AERATION TANK	2	15.60M. Ø X 3.50M.LD
7	SECONDARY SETTLING TANK	2	16.0M.Ø X 3.50M. SWD
8	DIGESTER	2	18.00 M. Ø X 9.775M. DEPTH
9	SLUDGE DRYING BEDS	9	28.0M. X 12.0M.
10	RECIRCULATION PUMP CUM SUMP HOUSE	1	6.0M. X 5.0M.
11	GAS HOLDER	2	7.50M.Ø X 4.0M. DEPTH
12	ENGINE ROOM	1	15.50M. X 8.50M.
13	GAS BURNER	1	---
14	PRIMARY SLUDGE PUMP CUM SUMP HOUSE	1	3.50M. X 3.50M
15	FILTRATE SUMP CUM PUMP HOUSE	1	3.50M. X 3.50M.

**LEGEND**

- PROCESS LINE
- SLUDGE LINE
- FILTRATE LINE
- GAS LINE

INST.					
ELEC.					
MECH.					
STRU.					
CIVIL					
REV NO.	0	1	2	3	4

REV.	DESCRIPTION OF REVISIONS	DATE	CHECKED

CLIENT:

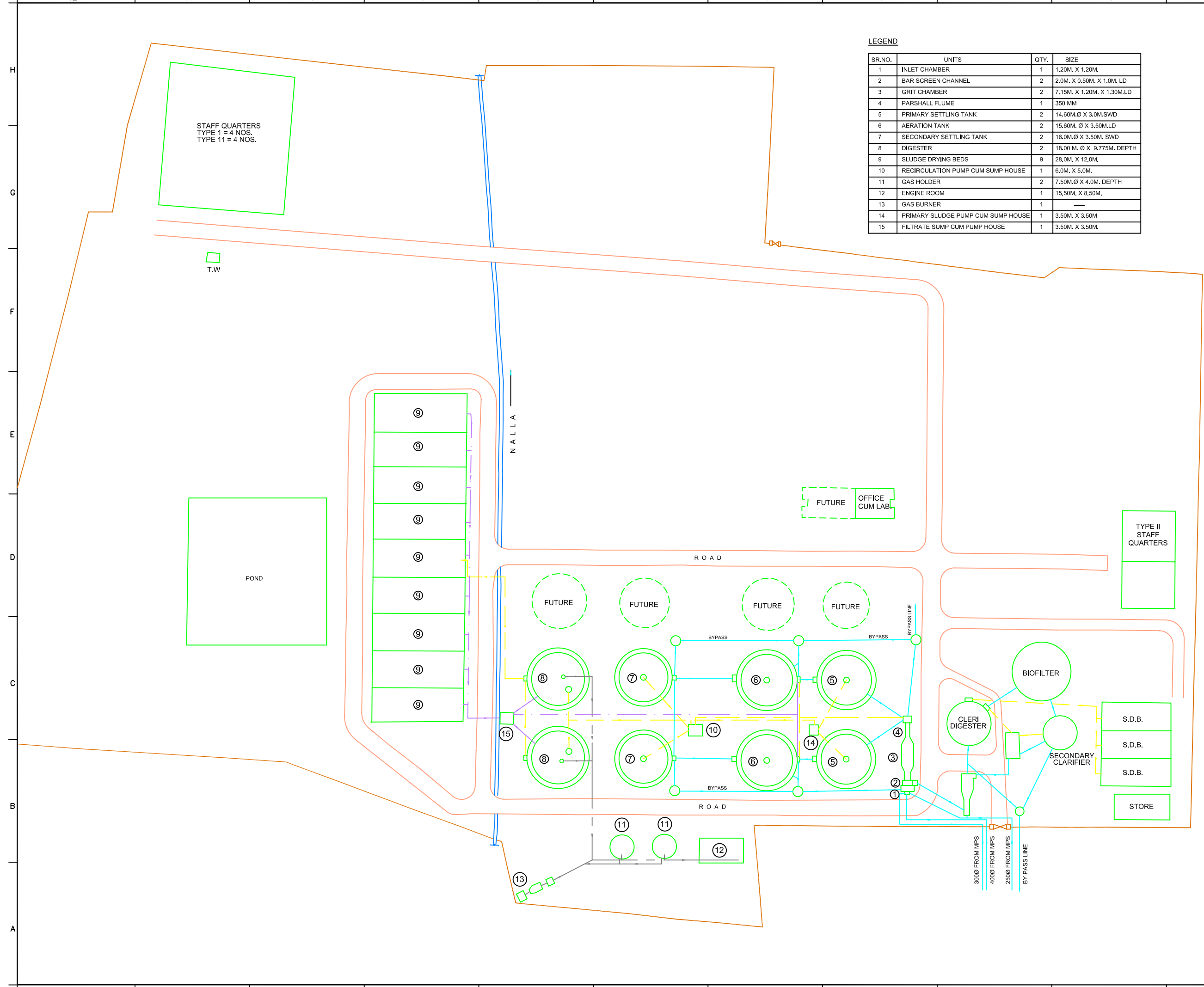
JOB:  
 CONSULTANCY SERVICES FOR FEASIBILITY STUDY OF PRIORITY PROJECTS UNDER POLLUTION ABATEMENT OF RIVER GANGA IN VARANASI

DRAWING TITLE:  
 REHABILITATION OF EXISTING STP AT BHAGWANPUR

CHECKED BY: SAURABH MISRA  
 APPROVED BY: V.N.SONTAKKE

DRAWN: KARKHANIS  
 DESIGNED: SCALE: 1:500  
 SURVEYED: DATE: 22/07/2004

DRAWING NO. VNS-STP-BWP  
 Sr. 52



12 11 10 9 8 7 6 5 4 3 2 1