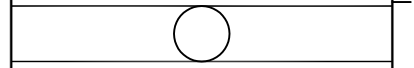
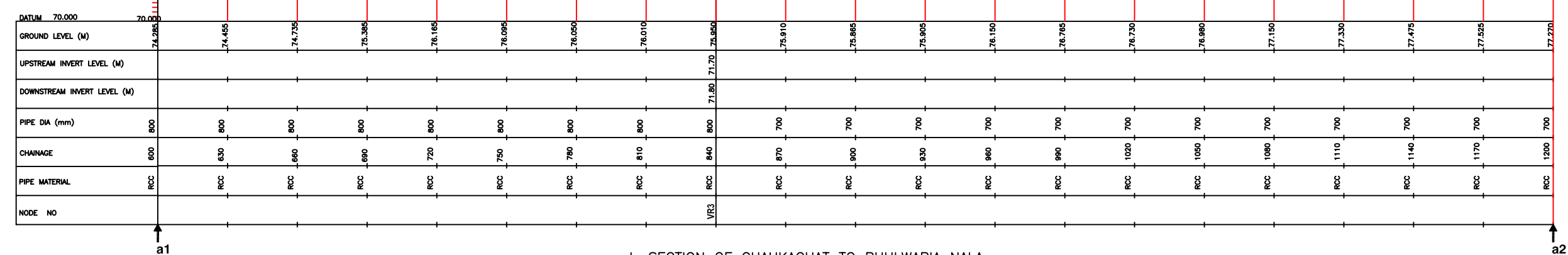
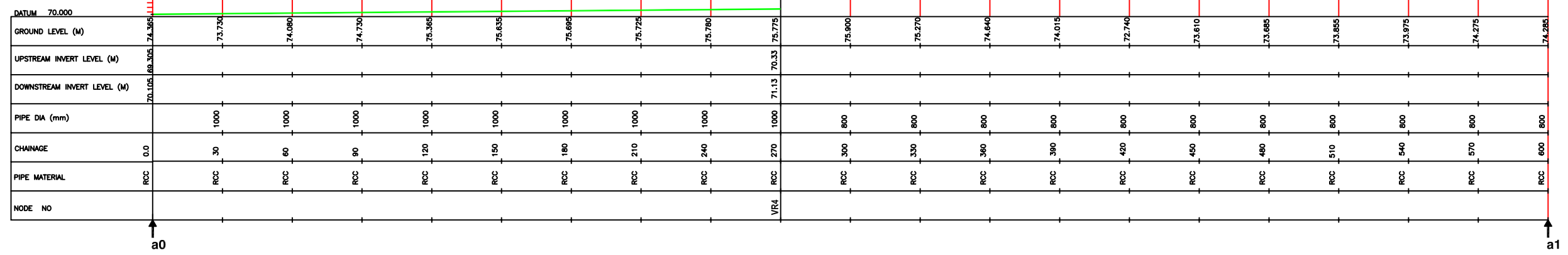
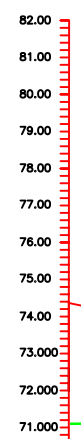


THIS DRAWING CONTAINS CONFIDENTIAL PROPRIETARY INFORMATION OF MWH INDIA PVT. LTD. AND IS NOT TO BE DISCLOSED TO THE PUBLIC OR TO COMPETITORS UNLESS OTHERWISE AUTHORIZED IN WRITING BY MWH INDIA PVT. LTD.



NOTES:
 1) PERMANENT BENCH MARK TAKEN ON RAILWAY BRIDGE NEAR CHOUKA GHAT JUNCTION 79.705 M.
 2) ALL THE LEVELS ARE IN METERS.

H
G
F
E
D
C
B
A



L-SECTION OF CHAUKAGHAT TO PHULWARIA NALA

LEGEND:
 REFERENCE POINT FOR L-SECTION a1

REFERENCE DRAWING:
 FOR LAYOUT DRAWING REFER BASE MAP WITH WARD BOUNDARIES PROPOSED SEWERAGE FACILITIES DRAWING NO. MWH/160/2003
 FOR PLAN SHOWING LOCATIONS OF NALLAH I&D ARRANGEMENTS ON VARUNA RIVER BANKS DRAWING NO. MWH/160/4007
 FOR CROSS-SECTIONS VIEWS OF SEWER NETWORK AT JUNCTIONS OF PROPOSED INTERCEPTORS OF NALLAH DRAWING NO. MWH/160/4009

INST.					
ELEC.					
MECH.					
STRU.					
CIVIL					
REV NO.	0	1	2	3	4

REV.	DESCRIPTION OF REVISIONS	DATE	CHECKED

CLIENT:

 JICA JAPAN INTERNATIONAL COOPERATION AGENCY
 TOKYO ENGINEERING CONSULTANTS CO., LTD.
 CIT ENGINEERING INTERNATIONAL CO., LTD.

JOB:
 CONSULTANCY SERVICES FOR FEASIBILITY STUDY OF PRIORITY PROJECTS UNDER POLLUTION ABATEMENT OF RIVER GANGA IN VARANASI

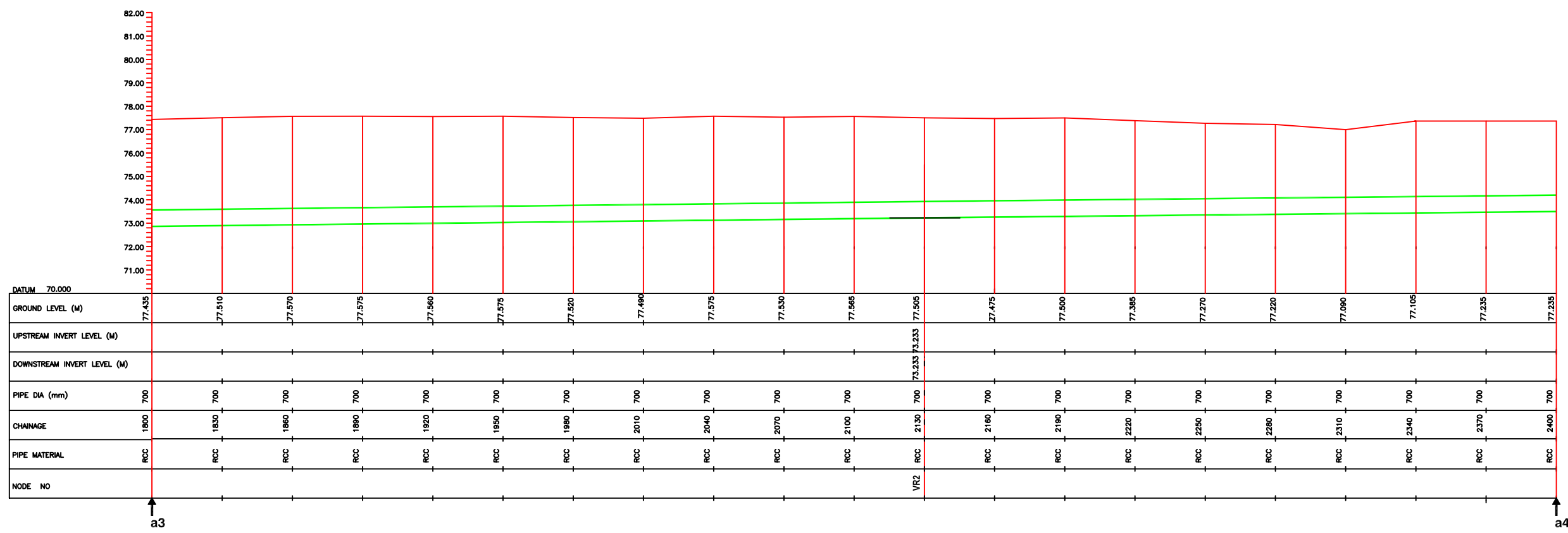
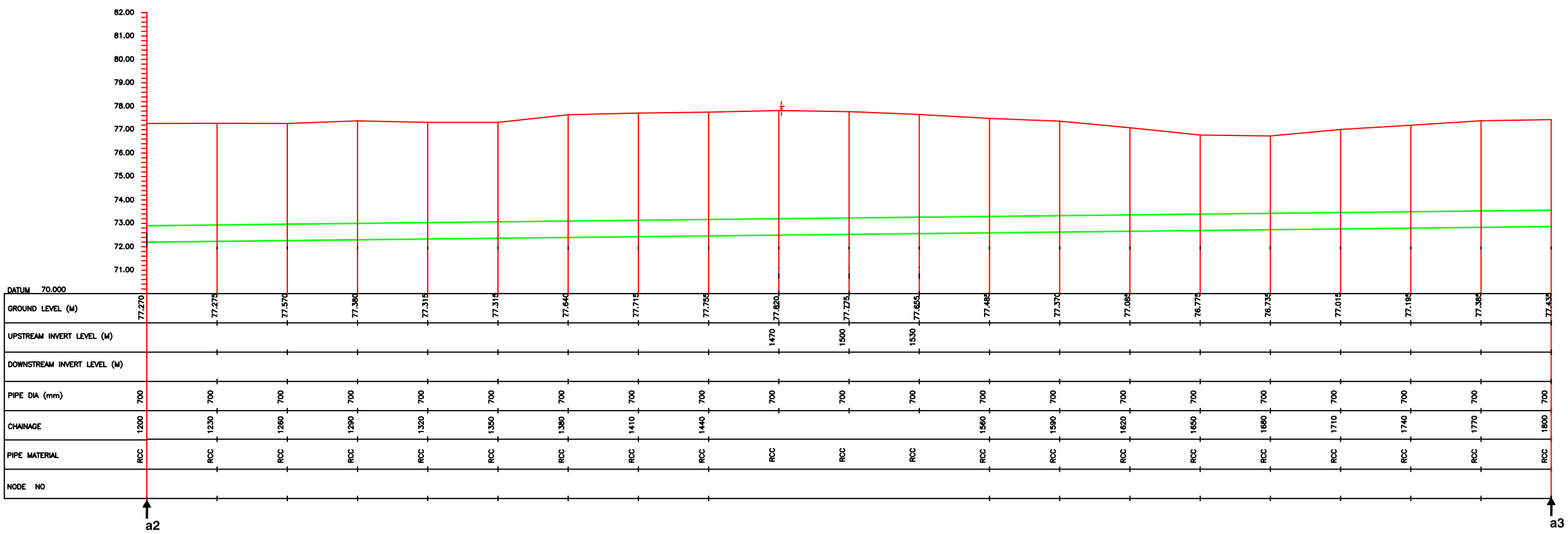
DRAWING TITLE:
 L SECTION OF SEWER ALIGNMENT ON CHUAKAGHAT TO PHULWARIA ROAD (a0 to a2)
 (VARUNA RIGHT BANK U/S INTERCEPTOR)

CHECKED BY: SAURABH MISRA
 APPROVED BY: V.N.SONTAKKE

DESIGNED: G.K.GAYKAR
 SCALE: H=1:2000 V=1:200
 SURVEYED: KSA
 DATE: 25/06/2004

DRAWING NO. VNS-PP-TS-1
 SHEET 1 OF 3
 Sr. 16

NOTES:
 1) PERMANENT BENCH MARK TAKEN ON RAILWAY BRIDGE NEAR CHOUKA GHAT JUNCTION 79.705 M.
 2) ALL THE LEVELS ARE IN METERS.



L-SECTION OF CHAUKAGHAT TO PHULWARIA NALA

LEGEND:
 REFERENCE POINT FOR L-SECTION ↑ a1

REFERENCE DRAWING:
 FOR LAYOUT DRAWING REFER BASE MAP WITH WARD BOUNDARIES PROPOSED SEWERAGE FACILITIES DRAWING NO. MWH/160/2003
 FOR PLAN SHOWING LOCATIONS OF NALLAH I&D ARRANGEMENTS ON VARUNA RIVER BANKS DRAWING NO. MWH/160/4007
 FOR CROSS-SECTIONS VIEWS OF SEWER NETWORK AT JUNCTIONS OF PROPOSED INTERCEPTORS OF NALLAH DRAWING NO. MWH/160/4009

INST.					
ELEC.					
MECH.					
STRU.					
CIVIL					

REV. NO.	0	1	2	3	4
REV.					
DESCRIPTION OF REVISIONS					
DATE					
CHECKED					

CLIENT:

 JAPAN INTERNATIONAL COOPERATION AGENCY
 TOKYO ENGINEERING CONSULTANTS CO., LTD.
 CITI ENGINEERING INTERNATIONAL CO., LTD.

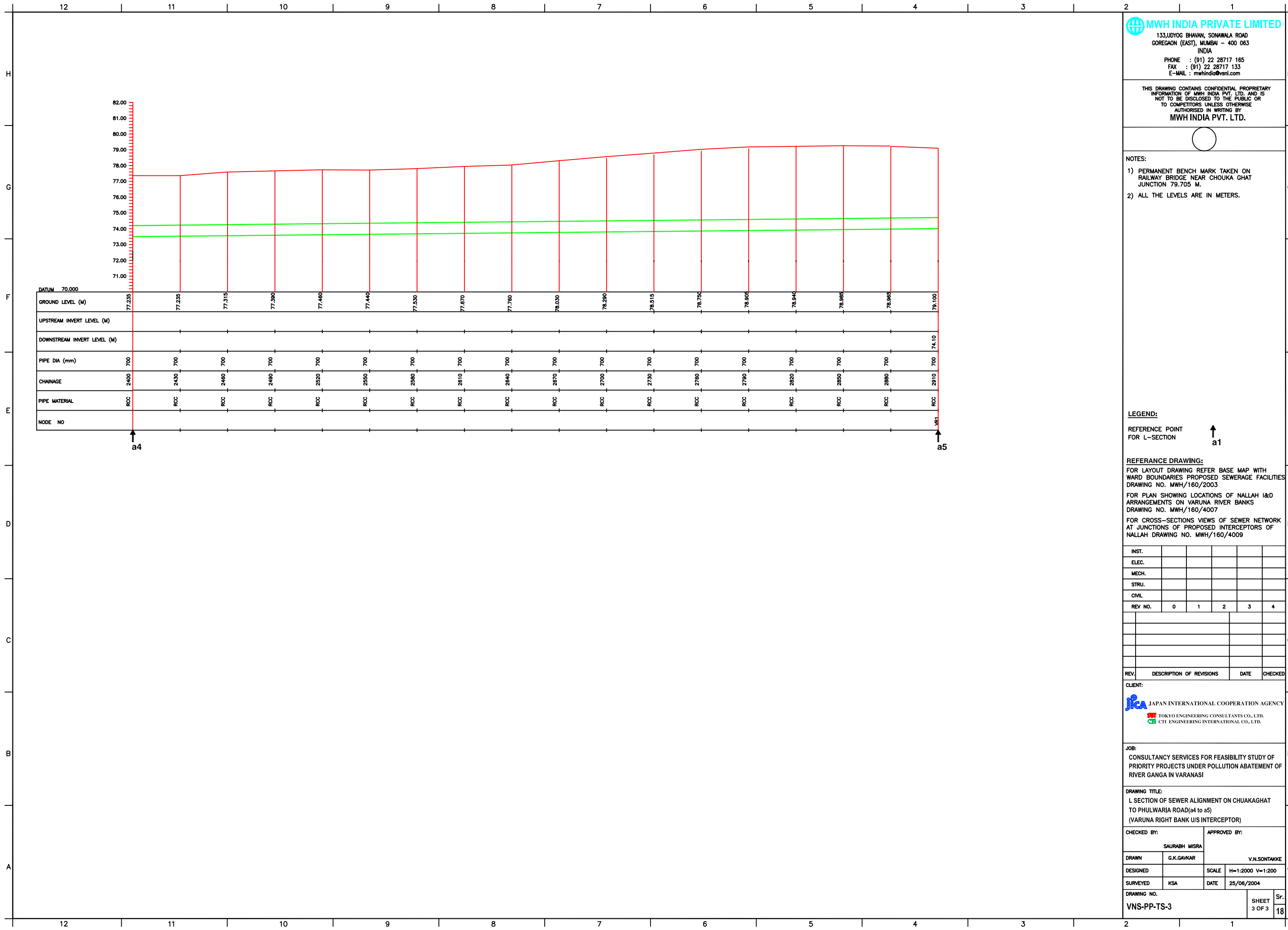
JOB:
 CONSULTANCY SERVICES FOR FEASIBILITY STUDY OF PRIORITY PROJECTS UNDER POLLUTION ABATEMENT OF RIVER GANGA IN VARANASI

DRAWING TITLE:
 L SECTION OF SEWER ALIGNMENT ON CHUAKAGHAT TO PHULWARIA ROAD (a2 to a4)
 (VARUNA RIGHT BANK U/S INTERCEPTOR)

CHECKED BY: SAURABH MISRA
APPROVED BY: V.N.SONTAKKE

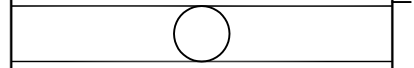
DRAWN: G.K.GAIKAR
DESIGNED: KSA
SURVEYED: KSA
DRAWING NO.: VNS-PP-TS-2
SCALE: H=1:2000 V=1:200
DATE: 25/06/2004

SHEET 2 OF 3
Sr. 17



MWH INDIA PRIVATE LIMITED
 133, LUDYOG BHAVAN, SONAWALA ROAD
 GOREGAON (EAST), MUMBAI - 400 063
 INDIA
 PHONE : (91) 22 28717 165
 FAX : (91) 22 28717 133
 E-MAIL : mwhindia@vsnl.com

THIS DRAWING CONTAINS CONFIDENTIAL PROPRIETARY INFORMATION OF MWH INDIA PVT. LTD. AND IS NOT TO BE DISCLOSED TO THE PUBLIC OR TO COMPETITORS UNLESS OTHERWISE AUTHORIZED IN WRITING BY MWH INDIA PVT. LTD.



NOTES:
 1) PERMANENT BENCH MARK TAKEN ON RAILWAY BRIDGE NEAR CHOUKA GHAT JUNCTION 79.705 M.
 2) ALL THE LEVELS ARE IN METERS.

LEGEND:
 REFERENCE POINT FOR L-SECTION a1

REFERENCE DRAWING:
 FOR LAYOUT DRAWING REFER BASE MAP WITH WARD BOUNDARIES PROPOSED SEWERAGE FACILITIES DRAWING NO. MWH/160/2003
 FOR PLAN SHOWING LOCATIONS OF NALLAH I&D ARRANGEMENTS ON VARUNA RIVER BANKS DRAWING NO. MWH/160/4007
 FOR CROSS-SECTIONS VIEWS OF SEWER NETWORK AT JUNCTIONS OF PROPOSED INTERCEPTORS OF NALLAH DRAWING NO. MWH/160/4009

INST.					
ELEC.					
MECH.					
STRU.					
CIVIL					
REV NO.	0	1	2	3	4

REV.	DESCRIPTION OF REVISIONS	DATE	CHECKED

CLIENT:
 JAPAN INTERNATIONAL COOPERATION AGENCY
 TOKYO ENGINEERING CONSULTANTS CO., LTD.
 CTI ENGINEERING INTERNATIONAL CO., LTD.

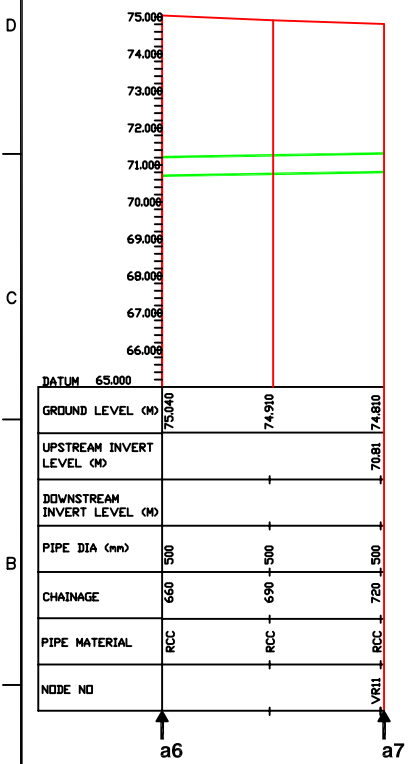
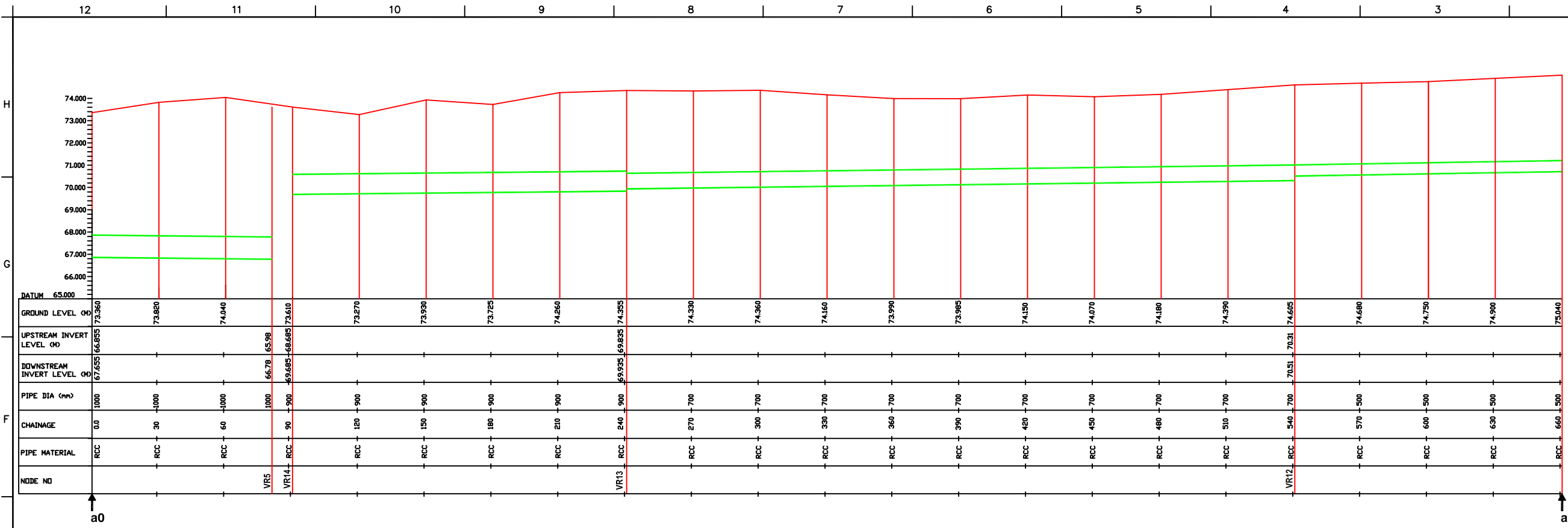
JOB:
 CONSULTANCY SERVICES FOR FEASIBILITY STUDY OF PRIORITY PROJECTS UNDER POLLUTION ABATEMENT OF RIVER GANGA IN VARANASI

DRAWING TITLE:
 L SECTION OF SEWER ALIGNMENT ON CHUAKAGHAT TO PHULWARIA ROAD (a4 to a5)
 (VARUNA RIGHT BANK U/S INTERCEPTOR)

CHECKED BY: SAURABH MISRA
APPROVED BY: V.N.SONTAKKE

DESIGNED: G.K.GAVKAR
SCALE: H=1:2000 V=1:200
SURVEYED: KSA
DATE: 25/06/2004

DRAWING NO.: VNS-PP-TS-3
SHEET: 3 OF 3
Sr.: 18



MWH INDIA PRIVATE LIMITED
 133,UDYOG BHAVAN, SONAWALA ROAD
 GOREGAON (EAST), MUMBAI - 400 063
 INDIA
 PHONE : (91) 22 28717 165
 FAX : (91) 22 28717 133
 E-MAIL : mwhindia@vsnl.com

THIS DRAWING CONTAINS CONFIDENTIAL PROPRIETARY INFORMATION OF MWH INDIA PVT. LTD. AND IS NOT TO BE DISCLOSED TO THE PUBLIC OR TO COMPETITORS UNLESS OTHERWISE AUTHORIZED IN WRITING BY MWH INDIA PVT. LTD.

NOTES:
 1) PERMANENT BENCH MARK TAKEN ON RAILWAY BRIDGE NEAR CHOUKA GHAT JUNCTION 79.705 M.
 2) ALL THE LEVELS ARE IN METERS.

LEGEND:
 REFERENCE POINT FOR L-SECTION a6

REFERENCE DRAWING:
 FOR LAYOUT DRAWING REFER BASE MAP WITH WARD BOUNDARIES PROPOSED SEWERAGE FACILITIES DRAWING NO. MWH/160/2003
 FOR PLAN SHOWING LOCATIONS OF NALLAH I&D ARRANGEMENTS ON VARUNA RIVER BANKS DRAWING NO. MWH/160/4007
 FOR CROSS-SECTIONS VIEWS OF SEWER NETWORK AT JUNCTIONS OF PROPOSED INTERCEPTORS OF NALLAH DRAWING NO. MWH/160/4009

INST.					
ELEC.					
MECH.					
STRU.					
CIVIL					
REV NO.	0	1	2	3	4
REV.	DESCRIPTION OF REVISIONS	DATE	CHECKED		

CLIENT:

 JICA JAPAN INTERNATIONAL COOPERATION AGENCY
 TOKYO ENGINEERING CONSULTANTS CO., LTD.
 CTI ENGINEERING INTERNATIONAL CO., LTD.

JOB:
 CONSULTANCY SERVICES FOR FEASIBILITY STUDY OF PRIORITY PROJECTS UNDER POLLUTION ABATEMENT OF RIVER GANGA IN VARANASI


DRAWING TITLE:
 L SECTION OF SEWER ALIGNMENT ON MUGALSARAI ROAD (a0 to a7)
 (VARUNA LEFT BANK U/S INTERCEPTOR)

CHECKED BY:		APPROVED BY:	
SAURABH MISRA		V.N.SONTAKKE	
DRAWN	G.K.GAWKAR	SCALE	H=1:2000 V=1:200
DESIGNED		DATE	25/06/2004
SURVEYED	KSA		
DRAWING NO.	VNS-PP-IC-12		
	Sr. 19		

THIS DRAWING CONTAINS CONFIDENTIAL PROPRIETARY INFORMATION OF MWH INDIA PVT. LTD. AND IS NOT TO BE DISCLOSED TO THE PUBLIC OR TO COMPETITORS UNLESS OTHERWISE AUTHORIZED IN WRITING BY MWH INDIA PVT. LTD.

- NOTES:
- 1) PERMANENT BENCH MARK TAKEN ON RAILWAY BRIDGE NEAR CHOUKA GHAT JUNCTION 79.705 M.
 - 2) ALL THE LEVELS ARE IN METERS.

LEGEND:

REFERENCE POINT FOR L-SECTION  a1

REFERENCE DRAWING:

FOR LAYOUT DRAWING REFER BASE MAP WITH WARD BOUNDARIES PROPOSED SEWERAGE FACILITIES DRAWING NO. MWH/160/2003

FOR PLAN SHOWING LOCATIONS OF NALLAH I&D ARRANGEMENTS ON VARUNA RIVER BANKS DRAWING NO. MWH/160/4007

FOR CROSS-SECTIONS VIEWS OF SEWER NETWORK AT JUNCTIONS OF PROPOSED INTERCEPTORS OF NALLAH DRAWING NO. MWH/160/4009

INST.					
ELEC.					
MECH.					
STRU.					
CIVIL					
REV NO.	0	1	2	3	4
REV.	DESCRIPTION OF REVISIONS		DATE	CHECKED	

CLIENT:

 JAPAN INTERNATIONAL COOPERATION AGENCY

 TOKYO ENGINEERING CONSULTANTS CO., LTD.

 CTI ENGINEERING INTERNATIONAL CO., LTD.

JOB:

CONSULTANCY SERVICES FOR FEASIBILITY STUDY OF PRIORITY PROJECTS UNDER POLLUTION ABATEMENT OF RIVER GANGA IN VARANASI

DRAWING TITLE:

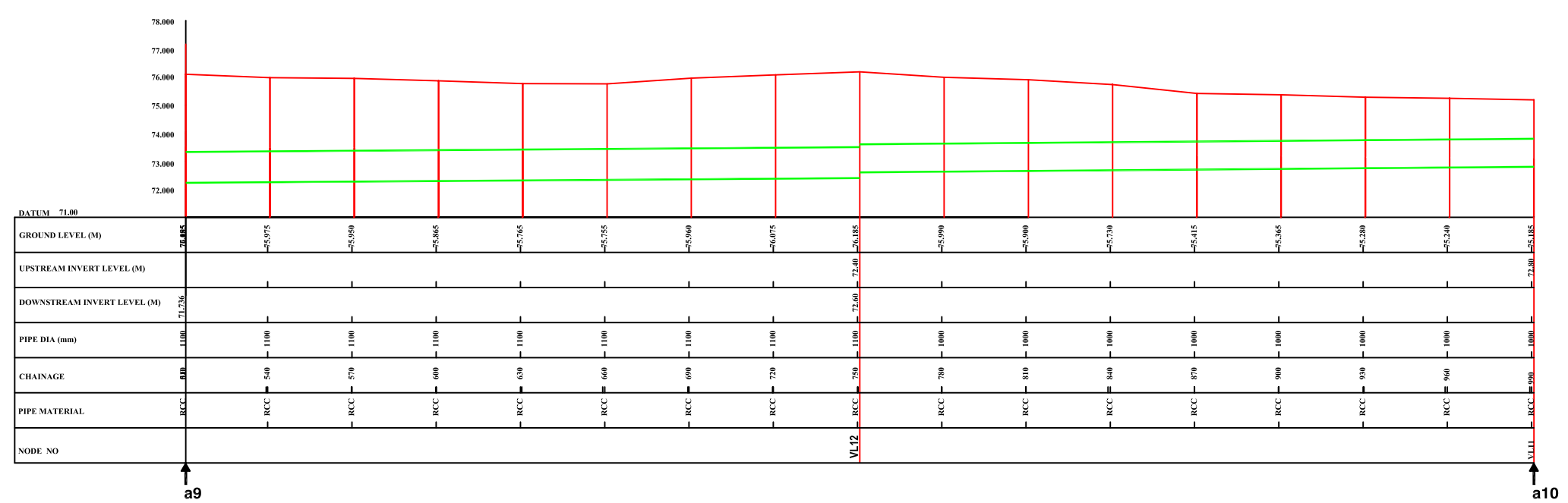
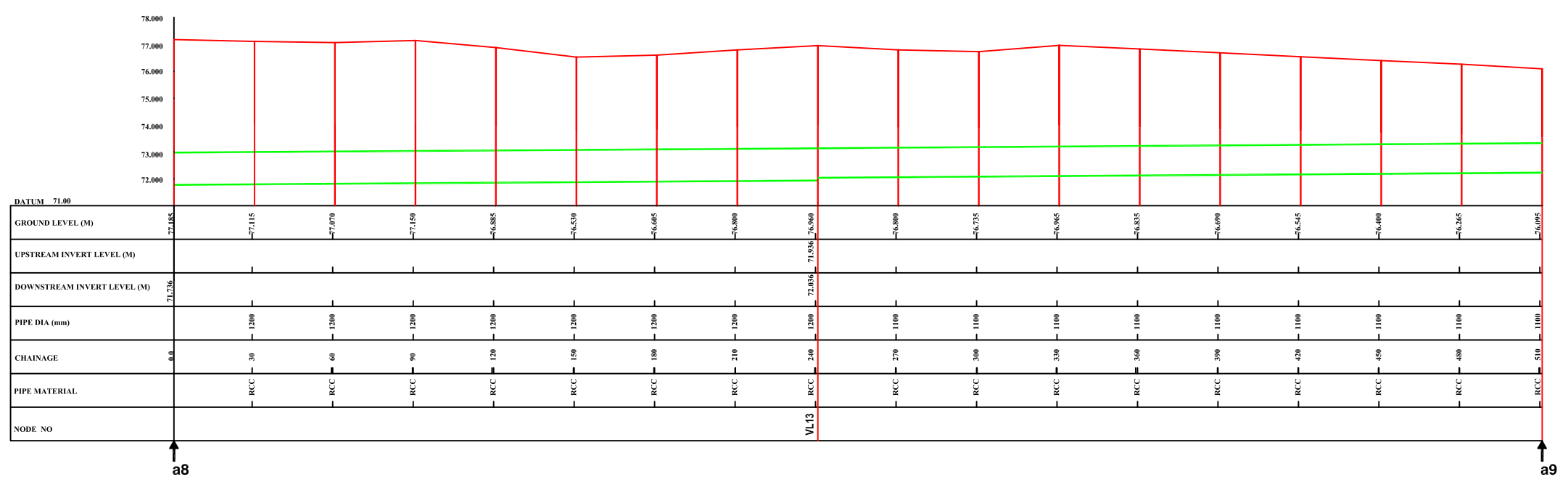
L SECTION OF SEWER ALIGNMENT ON PANDEPUR CROSSING TO PANCHKOSHI CHURAHA ROAD (a8 to a10) (VARUNA LEFT BANK D/S INTERCEPTOR)

CHECKED BY:		APPROVED BY:	
SAURABH MISRA		V.N.SONTAKKE	
DRAWN	G.K.GAWKAR	SCALE	H=1:2000 V=1:200
DESIGNED	KSA	DATE	25/06/2004

DRAWING NO.


VNS-PP-IC-13

Sr.
20



THIS DRAWING CONTAINS CONFIDENTIAL PROPRIETARY INFORMATION OF MWH INDIA PVT. LTD. AND IS NOT TO BE DISCLOSED TO THE PUBLIC OR TO COMPETITORS UNLESS OTHERWISE AUTHORIZED IN WRITING BY MWH INDIA PVT. LTD.




NOTES:
 1) PERMANENT BENCH MARK TAKEN ON RAILWAY BRIDGE NEAR CHOUKA GHAT JUNCTION 79.705 M.
 2) ALL THE LEVELS ARE IN METERS.

LEGEND:
 REFERENCE POINT FOR L-SECTION  a12

REFERENCE DRAWING:
 FOR LAYOUT DRAWING REFER BASE MAP WITH WARD BOUNDARIES PROPOSED SEWERAGE FACILITIES DRAWING NO. MWH/160/2003
 FOR PLAN SHOWING LOCATIONS OF NALLAH I&D ARRANGEMENTS ON VARUNA RIVER BANKS DRAWING NO. MWH/160/4007
 FOR CROSS-SECTIONS VIEWS OF SEWER NETWORK AT JUNCTIONS OF PROPOSED INTERCEPTORS OF NALLAH DRAWING NO. MWH/160/4009

INST.					
ELEC.					
MECH.					
STRU.					
CIVIL					
REV. NO.	0	1	2	3	4

REV.	DESCRIPTION OF REVISIONS	DATE	CHECKED

CLIENT:
 JAPAN INTERNATIONAL COOPERATION AGENCY
 TOKYO ENGINEERING CONSULTANTS CO., LTD.
 CTI ENGINEERING INTERNATIONAL CO., LTD.

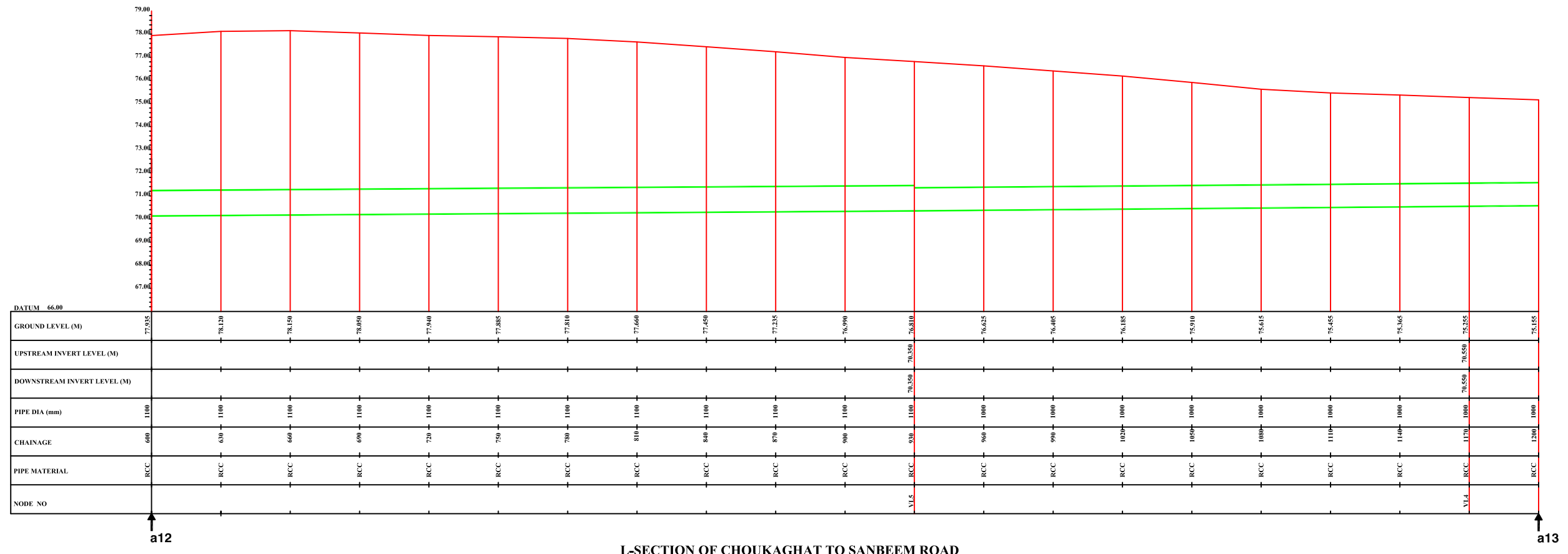
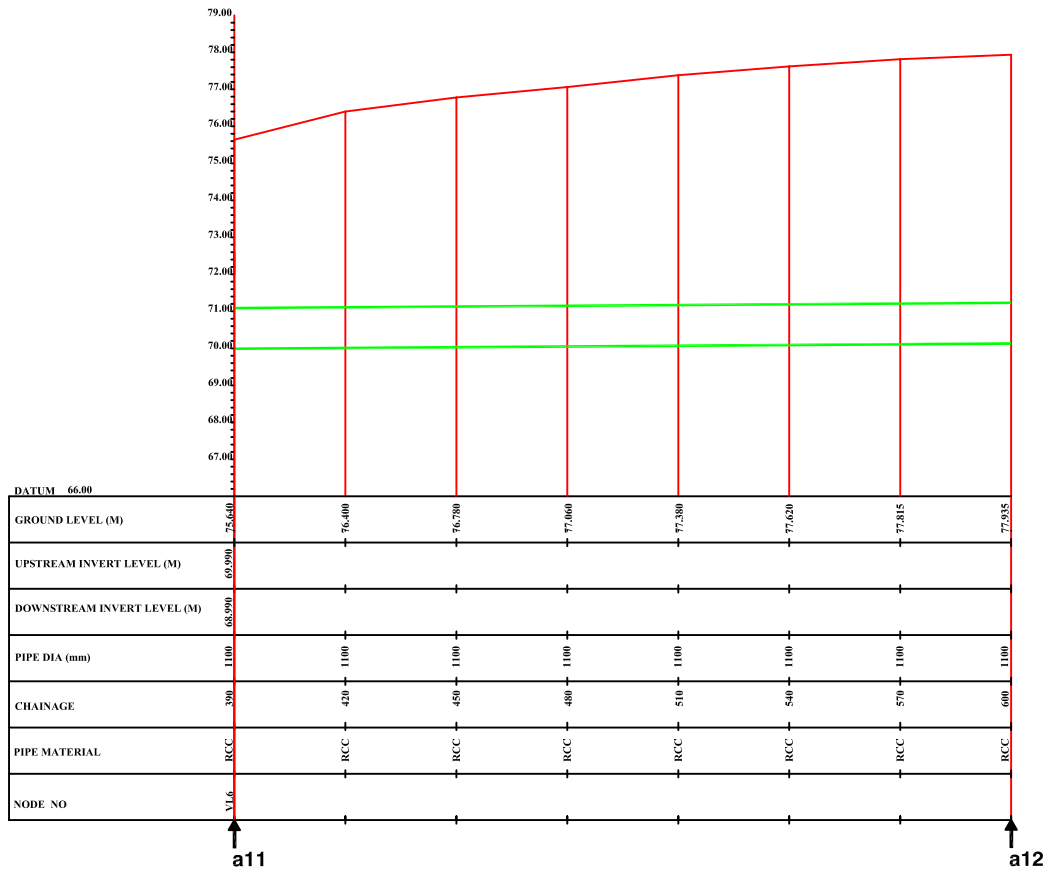
JOB:
 CONSULTANCY SERVICES FOR FEASIBILITY STUDY OF PRIORITY PROJECTS UNDER POLLUTION ABATEMENT OF RIVER GANGA IN VARANASI

DRAWING TITLE:
 L SECTION OF SEWER ALIGNMENT ON SANBEAM SCHOOL TO CHAUKAGHAT ROAD (a11 to a13)
 (VARUNA LEFT BANK U/S INTERCEPTOR)

CHECKED BY: SAURABH MISRA
 APPROVED BY: V.N.SONTAKKE
 DRAWN: G.K.GAWKAR

DESIGNED: SCALE: H=1:2000 V=1:200
 SURVEYED: KSA DATE: 25/06/2004

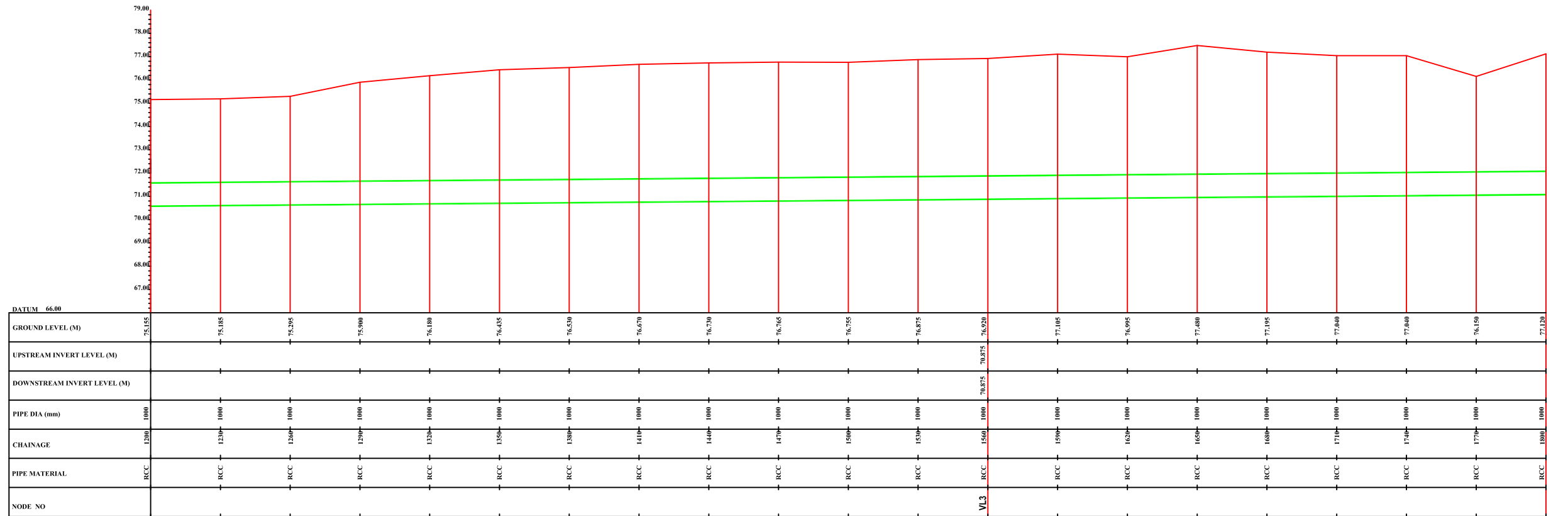
DRAWING NO. VNS-PP-IC-14
 SHEET 1 OF 2
 Sr. 21



L-SECTION OF CHOUKAGHAT TO SANBEAM ROAD

THIS DRAWING CONTAINS CONFIDENTIAL PROPRIETARY INFORMATION OF MWH INDIA PVT. LTD. AND IS NOT TO BE DISCLOSED TO THE PUBLIC OR TO COMPETITORS UNLESS OTHERWISE AUTHORIZED IN WRITING BY MWH INDIA PVT. LTD.

NOTES:
 1) PERMANENT BENCH MARK TAKEN ON RAILWAY BRIDGE NEAR CHOUKA GHAT JUNCTION 79.705 M.
 2) ALL THE LEVELS ARE IN METERS.



a13

a14

LEGEND:
 REFERENCE POINT FOR L-SECTION a14

REFERENCE DRAWING:
 FOR LAYOUT DRAWING REFER BASE MAP WITH WARD BOUNDARIES PROPOSED SEWERAGE FACILITIES DRAWING NO. MWH/160/2003
 FOR PLAN SHOWING LOCATIONS OF NALLAH I&D ARRANGEMENTS ON VARUNA RIVER BANKS DRAWING NO. MWH/160/4007
 FOR CROSS-SECTIONS VIEWS OF SEWER NETWORK AT JUNCTIONS OF PROPOSED INTERCEPTORS OF NALLAH DRAWING NO. MWH/160/4009

INST.					
ELEC.					
MECH.					
STRU.					
CIVIL					
REV. NO.	0	1	2	3	4

REV.	DESCRIPTION OF REVISIONS	DATE	CHECKED

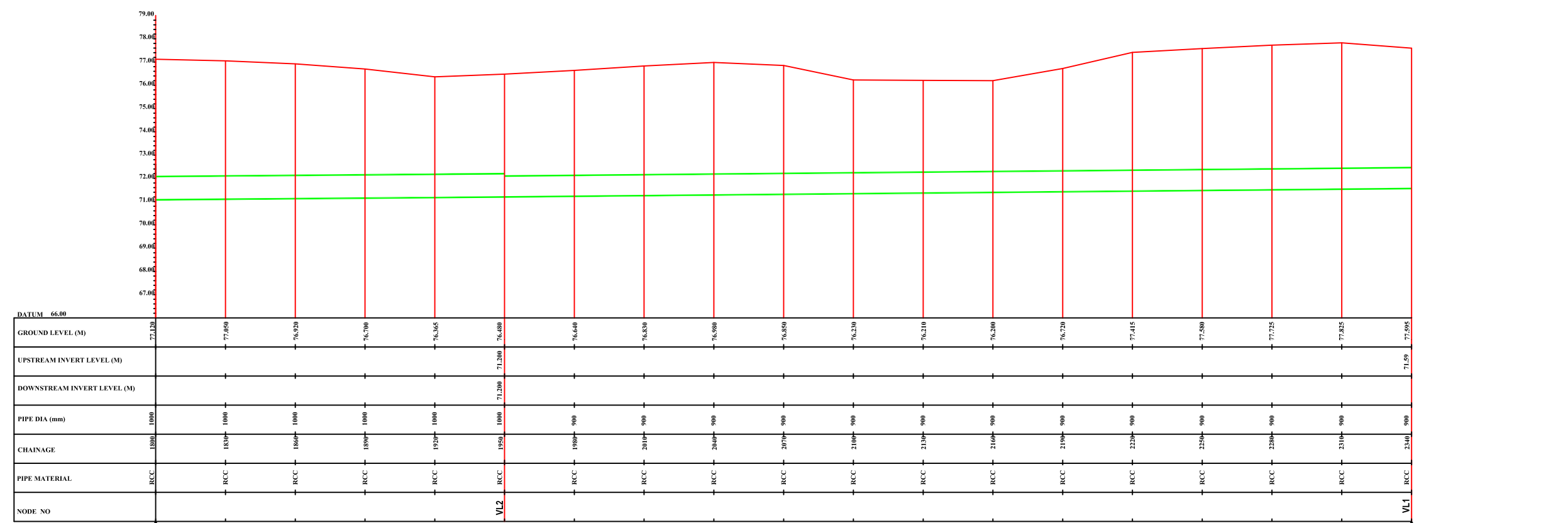
CLIENT:
 JAPAN INTERNATIONAL COOPERATION AGENCY
 TOKYO ENGINEERING CONSULTANTS CO., LTD.
 CTI ENGINEERING INTERNATIONAL CO., LTD.

JOB:
 CONSULTANCY SERVICES FOR FEASIBILITY STUDY OF PRIORITY PROJECTS UNDER POLLUTION ABATEMENT OF RIVER GANGA IN VARANASI

DRAWING TITLE:
 L SECTION OF SEWER ALIGNMENT ON SANBEAM SCHOOL TO CHAUKAGHAT ROAD (a13 to a15) (VARUNA LEFT BANK U/S INTERCEPTOR)

CHECKED BY: SAURABH MISRA
 APPROVED BY: V.N.SONTAKKE
 DRAWN: G.K.GAWKAR
 DESIGNED: SCALE: H=1:2000 V=1:200
 SURVEYED: KSA
 DATE: 25/06/2004

DRAWING NO. VNS-PP-IC-15
 SHEET 2 OF 2
 Sr. 22



a14

a15

L-SECTION OF CHOUKAGHAT TO SANBEAM ROAD

THIS DRAWING CONTAINS CONFIDENTIAL, PROPRIETARY INFORMATION OF MWH INDIA PVT. LTD. AND IS NOT TO BE DISCLOSED TO THE PUBLIC OR TO COMPETITORS UNLESS OTHERWISE AUTHORIZED IN WRITING BY MWH INDIA PVT. LTD.



- NOTES:
- 1) PERMANENT BENCH MARK TAKEN ON RAILWAY BRIDGE NEAR CHOUKA GHAT JUNCTION 78.705 M.
 - 2) ALL THE LEVELS ARE IN METERS.

LEGEND:
 REFERENCE POINT FOR L-SECTION ↑ a16

REFERENCE DRAWING:
 FOR LAYOUT DRAWING REFER BASE MAP WITH WARD BOUNDARIES PROPOSED SEWERAGE FACILITIES DRAWING NO. MWH/160/2003
 FOR PLAN SHOWING LOCATIONS OF NALLAH I&D ARRANGEMENTS ON VARUNA RIVER BANKS DRAWING NO. MWH/160/4007
 FOR CROSS-SECTIONS VIEWS OF SEWER NETWORK AT JUNCTIONS OF PROPOSED INTERCEPTORS OF NALLAH DRAWING NO. MWH/160/4009

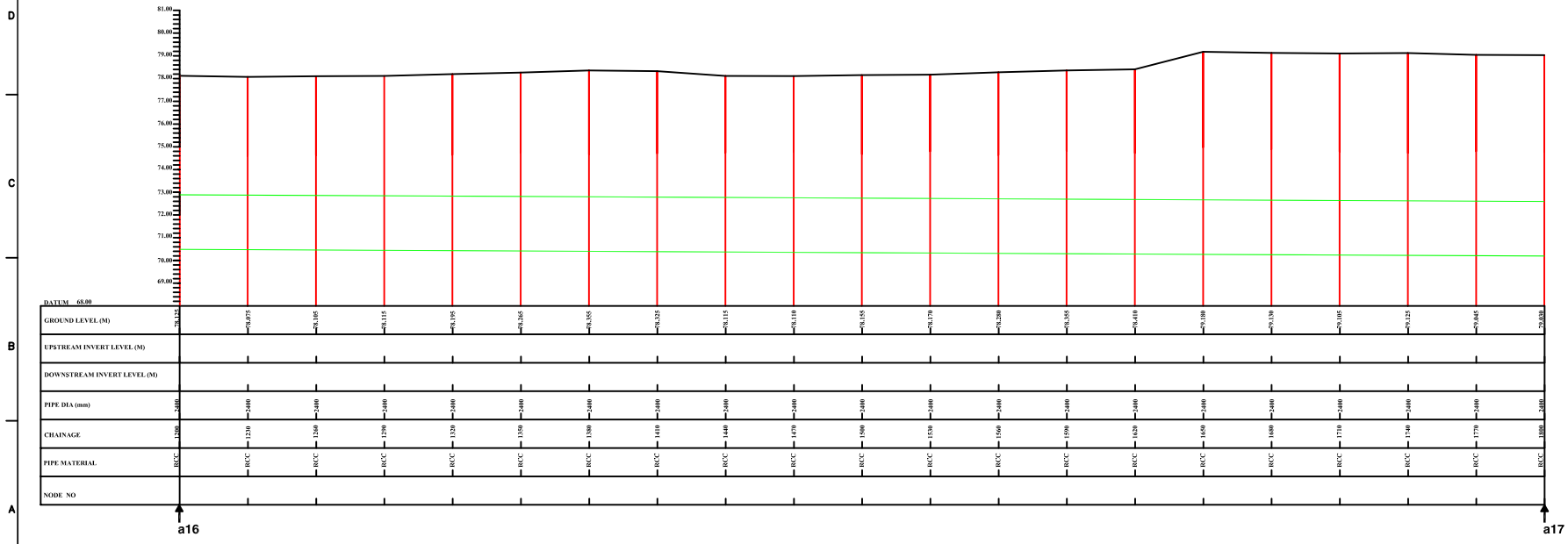
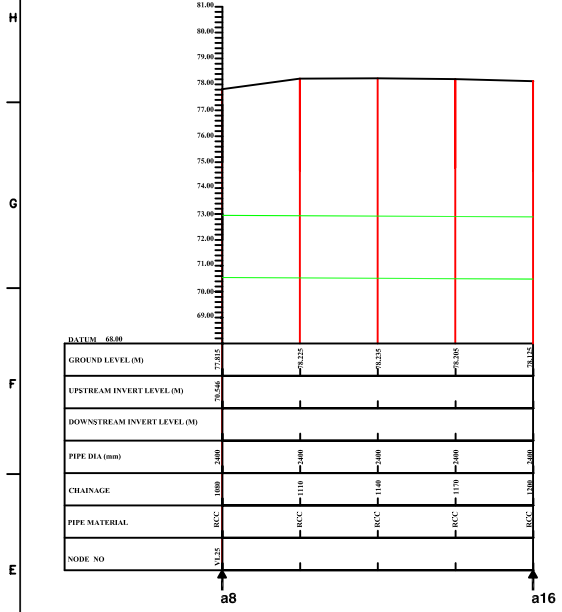
INST.					
ELEC.					
MECH.					
STRU.					
CIVIL					
REV NO.	0	1	2	3	4
1 CHANGE OF DIA 2400 INSTEAD OF 3-1800 05/08/04					
REV.	DESCRIPTION OF REVISIONS	DATE	CHECKED		

CLIENT:
 JAPAN INTERNATIONAL COOPERATION AGENCY
 TOKYO ENGINEERING CONSULTANTS CO. LTD.
 CEI ENGINEERING INTERNATIONAL CO. LTD.

JOB:
 CONSULTANCY SERVICES FOR FEASIBILITY STUDY OF PRIORITY PROJECTS UNDER POLLUTION ABATEMENT OF RIVER GANGA IN VARANASI

DRAWING TITLE:
 L SECTION OF SEWER ALIGNMENT ON AZAMGARH ROAD (a8 to a17)
 (PANDEPUR CROSSING TO SATHWA STP)

CHECKED BY:	SAURABH MISHRA	APPROVED BY:	
DRAWN	G.K.GAOKAR	SCALE	H=1:2000 V=1:200
DESIGNED		DATE	25/04/2004
SURVEYED	KSA		



THIS DRAWING CONTAINS CONFIDENTIAL PROPRIETARY INFORMATION OF MWH INDIA PVT. LTD. AND IS NOT TO BE DISCLOSED TO THE PUBLIC OR TO COMPETITORS UNLESS OTHERWISE AUTHORIZED IN WRITING BY MWH INDIA PVT. LTD.

NOTES:

- 1) PERMANENT BENCH MARK TAKEN ON RAILWAY BRIDGE NEAR CHOUKA GHAT JUNCTION 79.705 M.
- 2) ALL THE LEVELS ARE IN METERS.

LEGEND:

REFERENCE POINT FOR L-SECTION  a18

REFERENCE DRAWING:

FOR LAYOUT DRAWING REFER BASE MAP WITH WARD BOUNDARIES PROPOSED SEWERAGE FACILITIES DRAWING NO. MWH/160/2003

FOR PLAN SHOWING LOCATIONS OF NALLAH I&D ARRANGEMENTS ON VARUNA RIVER BANKS DRAWING NO. MWH/160/4007

FOR CROSS-SECTIONS VIEWS OF SEWER NETWORK AT JUNCTIONS OF PROPOSED INTERCEPTORS OF NALLAH DRAWING NO. MWH/160/4009

INST.					
ELEC.					
MECH.					
STRU.					
CIVIL					
REV NO.	0	1	2	3	4

1 CHANGE OF DIA 2400 INSTEAD OF 2-1800 05/08/04

REV.	DESCRIPTION OF REVISIONS	DATE	CHECKED

CLIENT:
 JAPAN INTERNATIONAL COOPERATION AGENCY
 TOKYO ENGINEERING CONSULTANTS CO., LTD.
 C.T.I. ENGINEERING INTERNATIONAL CO., LTD.

JOB:
CONSULTANCY SERVICES FOR FEASIBILITY STUDY OF PRIORITY PROJECTS UNDER POLLUTION ABATEMENT OF RIVER GANGA IN VARANASI

DRAWING TITLE:
L SECTION OF SEWER ALIGNMENT ON AZAMGARH ROAD (a17 to a19)
(PANDEPUR CROSSING TO SATHWA STP)

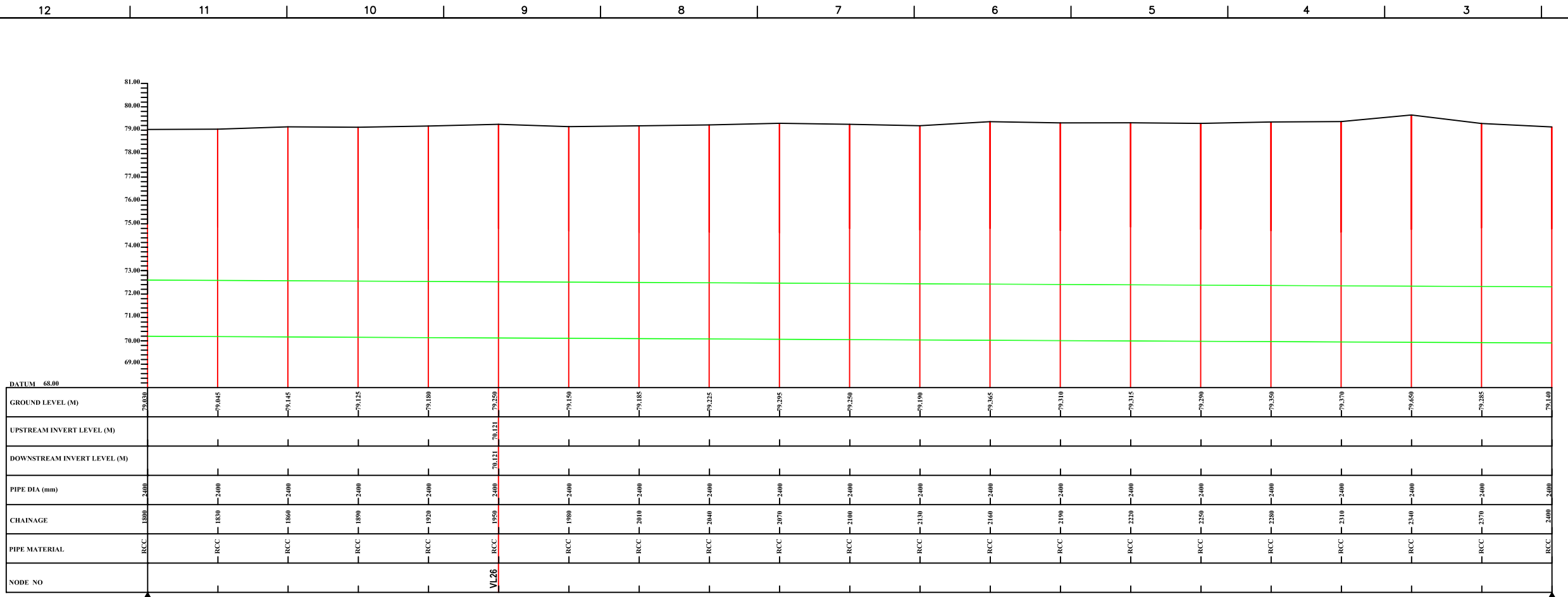
CHECKED BY: SAURABH MISRA
APPROVED BY: V.N.SONTAKKE

DRAWN: G.K.GAYKAR
DESIGNED: V.N.SONTAKKE

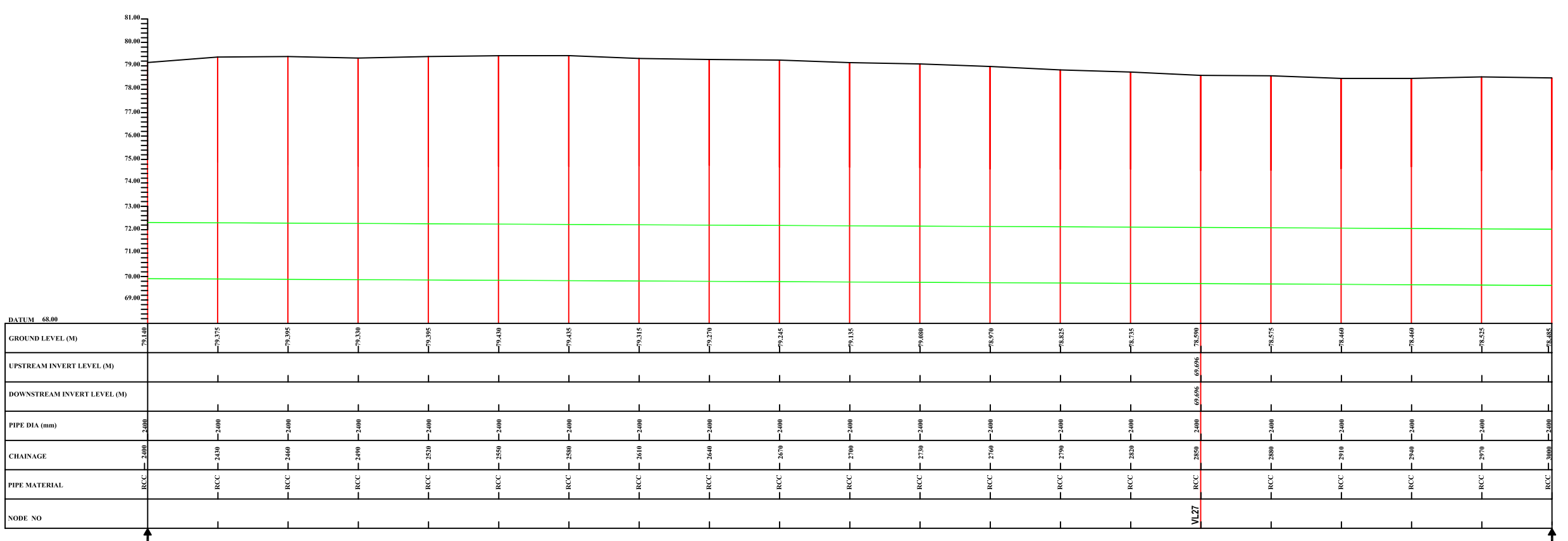
SURVEYED: KSA
SCALE: H=1:2000 V=1:200

DRAWING NO.: VNS-PP-TS-5
DATE: 25/06/2004

SHEET Sr.
2 OF 4 24



L - SECTION OF CHOUKA GHAT TO AZAMGARH ROAD



a17

a18

a18

a19

THIS DRAWING CONTAINS CONFIDENTIAL PROPRIETARY INFORMATION OF MWH INDIA PVT. LTD. AND IS NOT TO BE DISCLOSED TO THE PUBLIC OR TO COMPETITORS UNLESS OTHERWISE AUTHORIZED IN WRITING BY MWH INDIA PVT. LTD.



NOTES:

- 1) PERMANENT BENCH MARK TAKEN ON RAILWAY BRIDGE NEAR CHOUKA GHAT JUNCTION 79.705 M.
- 2) ALL THE LEVELS ARE IN METERS.

LEGEND:

REFERENCE POINT FOR L-SECTION a20

REFERENCE DRAWING:

FOR LAYOUT DRAWING REFER BASE MAP WITH WARD BOUNDARIES PROPOSED SEWERAGE FACILITIES DRAWING NO. MWH/160/2003

FOR PLAN SHOWING LOCATIONS OF NALLAH I&D ARRANGEMENTS ON VARUNA RIVER BANKS DRAWING NO. MWH/160/4007

FOR CROSS-SECTIONS VIEWS OF SEWER NETWORK AT JUNCTIONS OF PROPOSED INTERCEPTORS OF NALLAH DRAWING NO. MWH/160/4009

INST.					
ELEC.					
MECH.					
STRU.					
CIVIL					
REV NO.	0	1	2	3	4

1	CHANGE OF DIA 2400 INSTEAD OF 2-1800	05/08/04	
---	--------------------------------------	----------	--

REV.	DESCRIPTION OF REVISIONS	DATE	CHECKED

CLIENT:



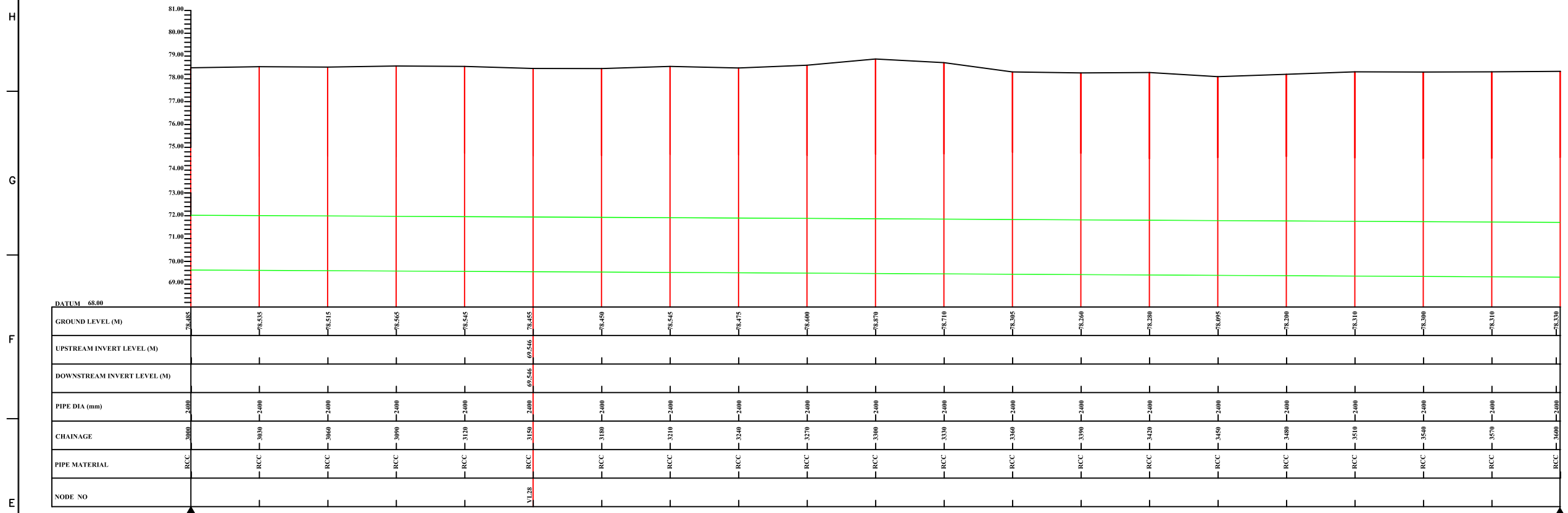
JOB:
CONSULTANCY SERVICES FOR FEASIBILITY STUDY OF PRIORITY PROJECTS UNDER POLLUTION ABATEMENT OF RIVER GANGA IN VARANASI

DRAWING TITLE:
L SECTION OF SEWER ALIGNMENT ON AZAMGARH ROAD (a19 to a21)
(PANDEPUR CROSSING TO SATHWA STP)

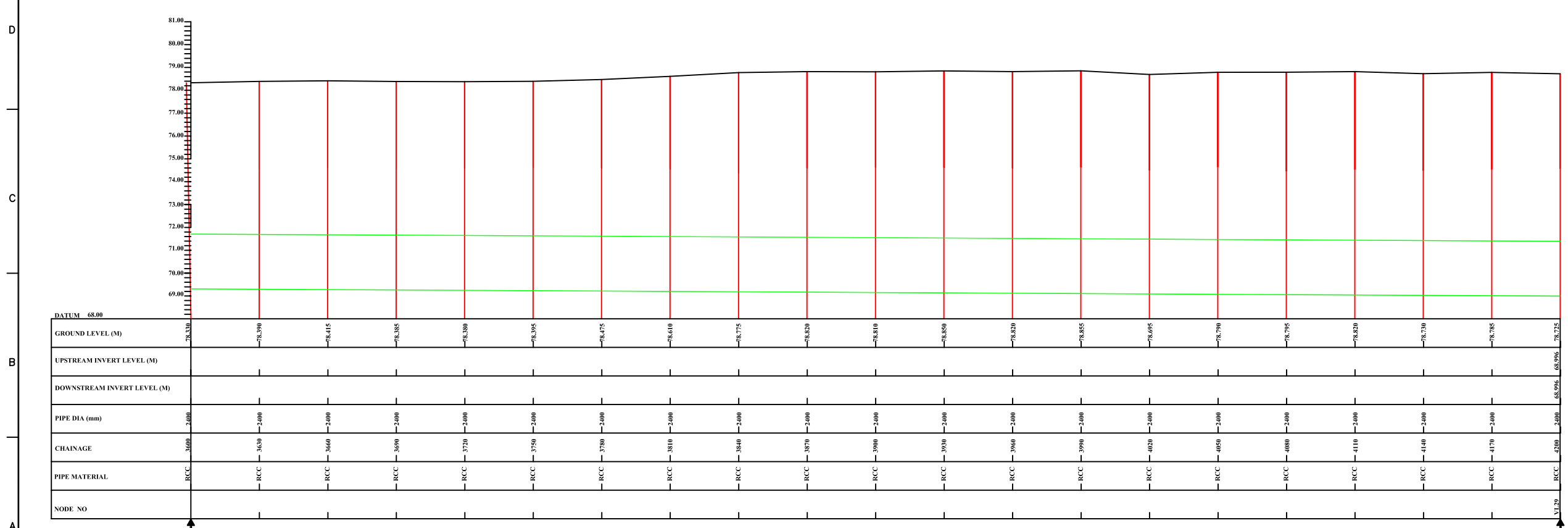
CHECKED BY:	APPROVED BY:
SAURABH MISRA	V.N.SONTAKKE

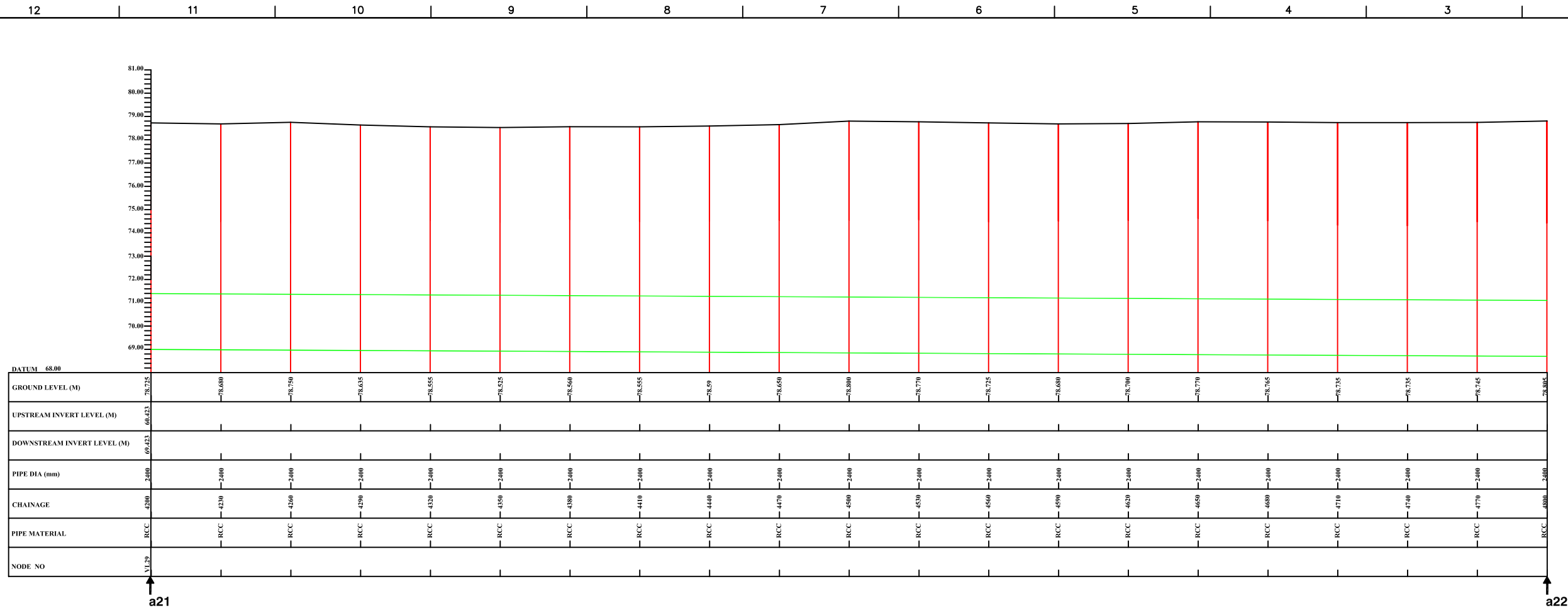
DRAWN	G.K.GAYKAR	SCALE	H=1:2000 V=1:200
DESIGNED		DATE	25/06/2004

DRAWING NO.	VNS-PP-TS-6	SHEET	3 OF 4	Sr.	25
--------------------	-------------	--------------	--------	------------	----

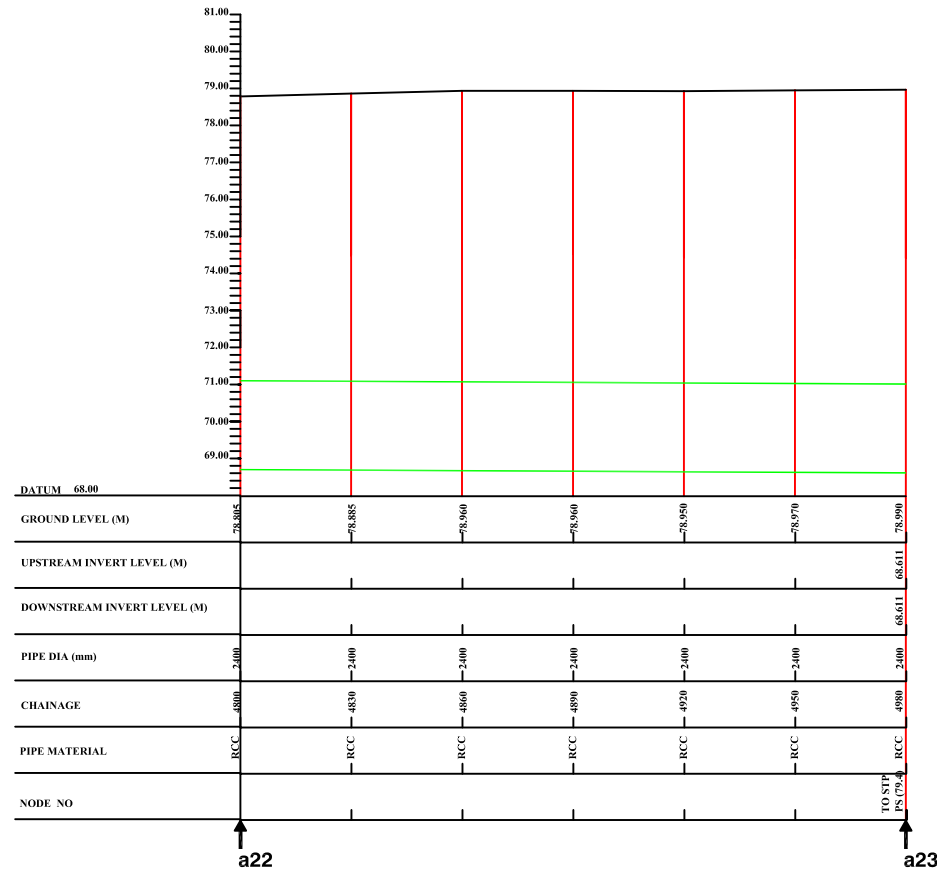


L - SECTION OF CHOUKA GHAT TO AZAMGARH ROAD





L - SECTION OF CHOUKA GHAT TO AZAMGARH ROAD



MWH INDIA PRIVATE LIMITED
 133, LUDYOG BHAVAN, SONAWALA ROAD
 GOREGAON (EAST), MUMBAI - 400 063
 INDIA
 PHONE : (91) 22 28717 165
 FAX : (91) 22 28717 133
 E-MAIL : mwhindia@vsnl.com

THIS DRAWING CONTAINS CONFIDENTIAL PROPRIETARY INFORMATION OF MWH INDIA PVT. LTD. AND IS NOT TO BE DISCLOSED TO THE PUBLIC OR TO COMPETITORS UNLESS OTHERWISE AUTHORIZED IN WRITING BY MWH INDIA PVT. LTD.

NOTES:
 1) PERMANENT BENCH MARK TAKEN ON RAILWAY BRIDGE NEAR CHOUKA GHAT JUNCTION 79.705 M.
 2) ALL THE LEVELS ARE IN METERS.

LEGEND:
 REFERENCE POINT FOR L-SECTION ↑ a22

REFERENCE DRAWING:
 FOR LAYOUT DRAWING REFER BASE MAP WITH WARD BOUNDARIES PROPOSED SEWERAGE FACILITIES DRAWING NO. MWH/160/2003
 FOR PLAN SHOWING LOCATIONS OF NALLAH I&D ARRANGEMENTS ON VARUNA RIVER BANKS DRAWING NO. MWH/160/4007
 FOR CROSS-SECTIONS VIEWS OF SEWER NETWORK AT JUNCTIONS OF PROPOSED INTERCEPTORS OF NALLAH DRAWING NO. MWH/160/4009

INST.					
ELEC.					
MECH.					
STRU.					
CIVIL					
REV NO.	0	1	2	3	4
1	CHANGE OF DIA 2400 INSTEAD OF 2-1800	05/08/04			
REV.	DESCRIPTION OF REVISIONS	DATE	CHECKED		

CLIENT:

 JICA JAPAN INTERNATIONAL COOPERATION AGENCY
 TOKYO ENGINEERING CONSULTANTS CO., LTD.
 CTI ENGINEERING INTERNATIONAL CO., LTD.

JOB:
 CONSULTANCY SERVICES FOR FEASIBILITY STUDY OF PRIORITY PROJECTS UNDER POLLUTION ABATEMENT OF RIVER GANGA IN VARANASI

DRAWING TITLE:
 L SECTION OF SEWER ALIGNMENT ON AZAMGARH ROAD (a21 to a23)
 (PANDEPUR CROSSING TO SATHWA STP)

CHECKED BY: SAURABH MISRA
 APPROVED BY: V.N.SONTAKKE
 DRAWN: G.K.GAYKAR
 DESIGNED: SCALE: H=1:2000 V=1:200
 SURVEYED: KSA
 DATE: 25/06/2004

DRAWING NO. VNS-PP-TS-7
 SHEET 4 OF 4
 Sr. 26