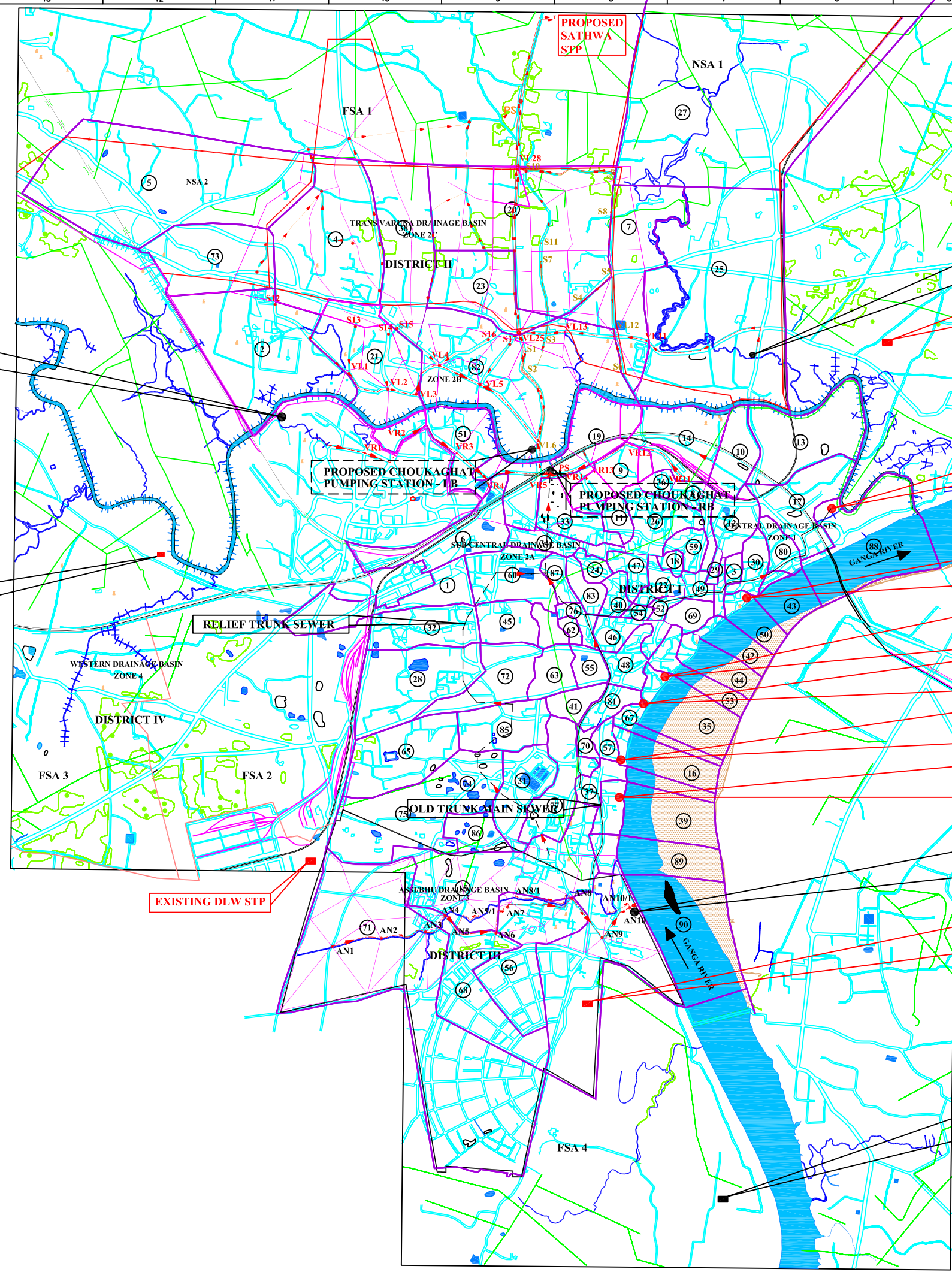




NOTES:



PROPOSED PHULWARIA PUMPING STATION

PROPOSED LOHTA STP NOT COVERED UNDER PRESENT STUDY

RELIEF TRUNK SEWER

EXISTING DLW STP

PROPOSED SATHWA STP

PROPOSED NAROKHAR PUMPING STATION

REHABILITATION WORKS PROPOSED AT EXISTING DINAPUR STP

REHABILITATION WORKS PROPOSED AT EXISTING KONIA MPS

REHABILITATION WORKS PROPOSED AT EXISTING TRILOCHAN GHAT PUMPING STATION

REHABILITATION WORKS PROPOSED AT EXISTING JALASEN GHAT PUMPING STATION

REHABILITATION WORKS PROPOSED AT EXISTING Dr R.P. GHAT PUMPING STATION

REHABILITATION WORKS PROPOSED AT EXISTING MANSAROVAR GHAT PUMPING STATION

REHABILITATION WORKS PROPOSED AT EXISTING HARISHCHANDRA GHAT PUMPING STATION

PROPOSED NAGWA PUMPING STATION

REHABILITATION WORKS PROPOSED AT EXISTING BHU STP

PROPOSED RAMNA STP NOT COVERED UNDER PRESENT STUDY

LEGEND

- INTERCEPTER SEWER
- RISING MAIN
- TRUNK SEWER
- RELIEF TRUNK SEWER
- SECONDARY SEWER

INST.					
ELEC.					
Mech.					
STRU.					
CIVIL					
REV. NO.	0	1	2	3	4
REV.					
DESCRIPTION OF REVISIONS					
DATE					
CHECK					

CLIENT:
 JAPAN INTERNATIONAL COOPERATION AGENCY
 TOKYO ENGINEERING CONSULTANTS CO., LTD.
 CTE ENGINEERING INTERNATIONAL CO., LTD.

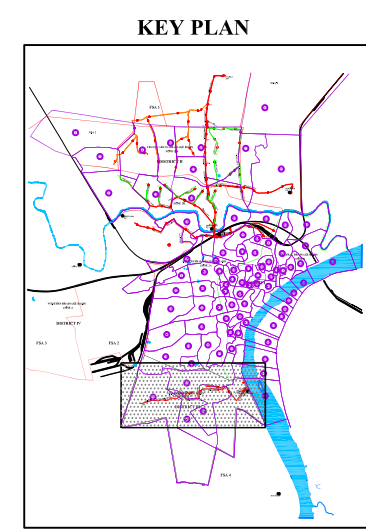
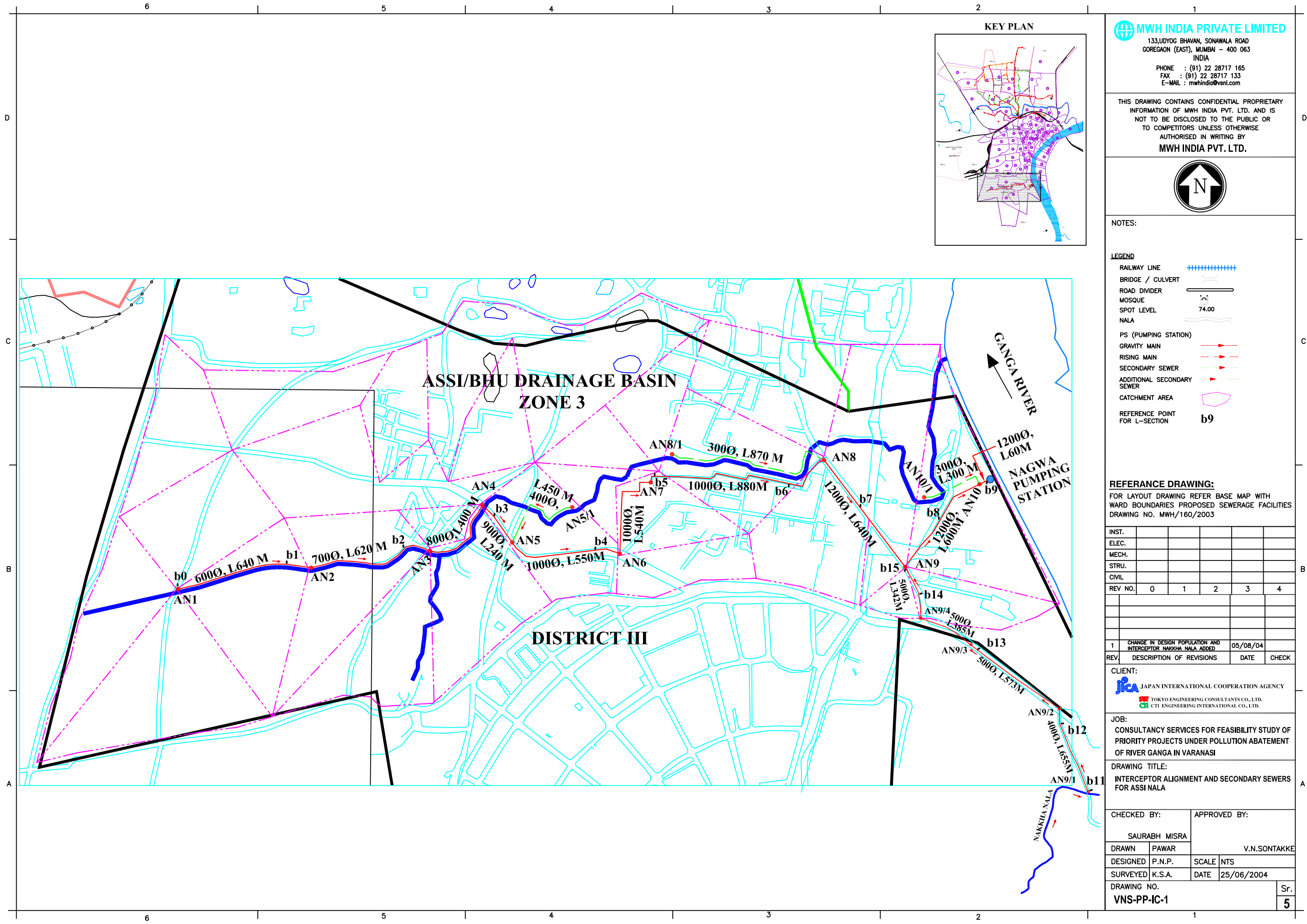
JOB:
 CONSULTANCY SERVICES FOR FEASIBILITY STUDY OF PRIORITY PROJECTS UNDER POLLUTION ABATEMENT OF RIVER GANGA IN VARANASI

DRAWING TITLE:
 BASE MAP SHOWING SEWERAGE ZONES WITH EXISTING & PROPOSED SEWERAGE SYSTEM

CHECKED BY: SAURABH MEHA
 APPROVED BY: VALSANTAKAR

DRAWN: KARSHANS
 DESIGNED: NSR
 SURVEYED: NSR
 DATE: 21/06/04

DRAWING NO.: VNS-BASE MAP-4
 SCALE: H.T.S.
 SHEET: 4



MWH INDIA PRIVATE LIMITED
 133, UDYOG BHAVAN, SONAWALA ROAD
 GOREGAON (EAST), MUMBAI - 400 063
 INDIA
 PHONE : (91) 22 28717 165
 FAX : (91) 22 28717 133
 E-MAIL : mwhindia@vsnl.com

THIS DRAWING CONTAINS CONFIDENTIAL PROPRIETARY INFORMATION OF MWH INDIA PVT. LTD. AND IS NOT TO BE DISCLOSED TO THE PUBLIC OR TO COMPETITORS UNLESS OTHERWISE AUTHORISED IN WRITING BY MWH INDIA PVT. LTD.



NOTES:

- LEGEND**
- RAILWAY LINE
 - BRIDGE / CULVERT
 - ROAD DIVIDER
 - MOSQUE
 - SPOT LEVEL
 - NALA
 - PS (PUMPING STATION)
 - GRAVITY MAIN
 - RISING MAIN
 - SECONDARY SEWER
 - ADDITIONAL SECONDARY SEWER
 - CATCHMENT AREA
 - REFERENCE POINT FOR L-SECTION **b9**

REFERENCE DRAWING:
 FOR LAYOUT DRAWING REFER BASE MAP WITH WARD BOUNDARIES PROPOSED SEWERAGE FACILITIES DRAWING NO. MWH/160/2003

INST.					
ELEC.					
MECH.					
STRU.					
CIVIL					
REV NO.	0	1	2	3	4

1	CHANGE IN DESIGN POPULATION AND INTERCEPTOR NAKKHA NALA ADDED	05/08/04	
REV.	DESCRIPTION OF REVISIONS	DATE	CHECK

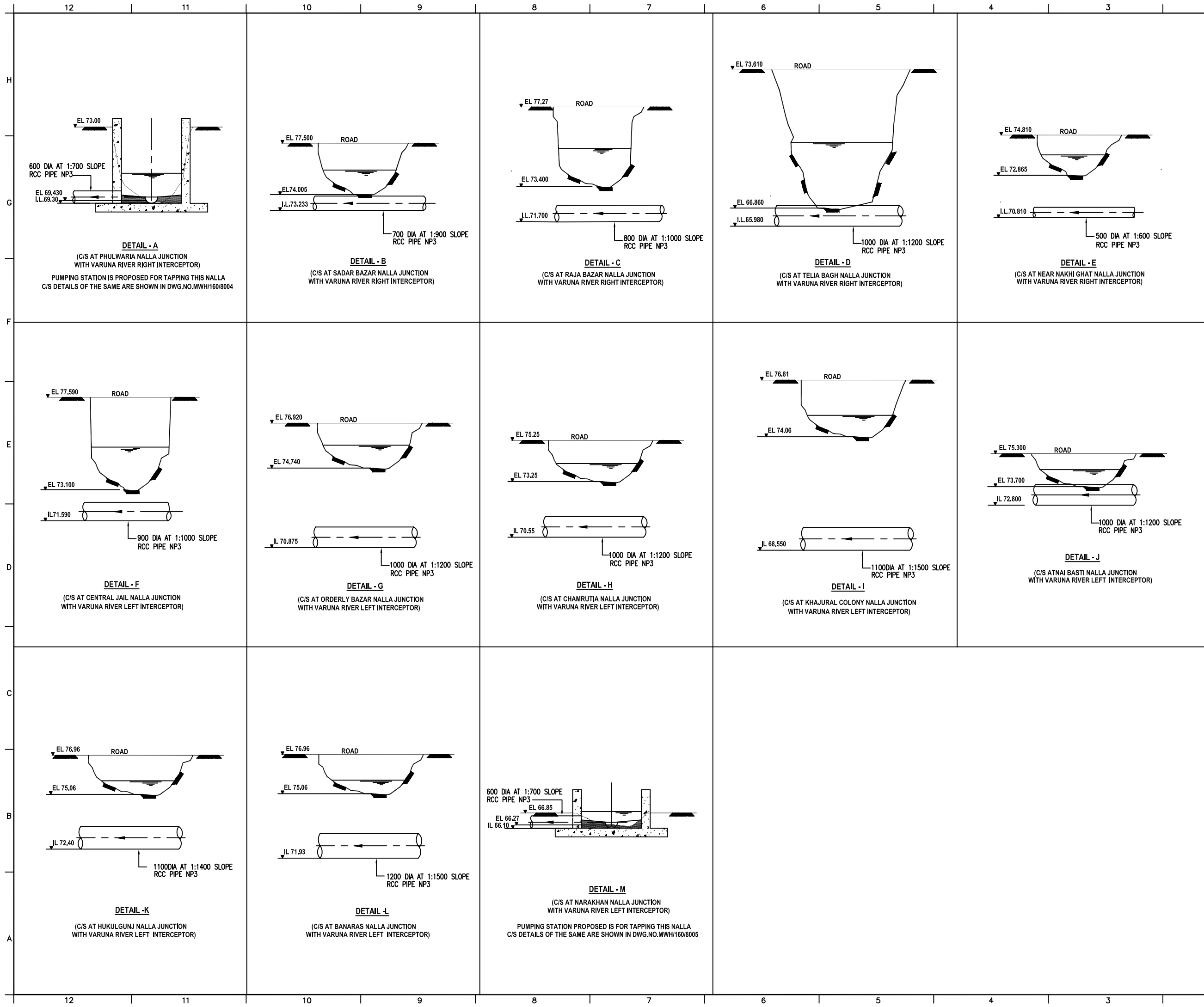
CLIENT:

 JAPAN INTERNATIONAL COOPERATION AGENCY
 TOKYO ENGINEERING CONSULTANTS CO., LTD.
 CITI ENGINEERING INTERNATIONAL CO., LTD.

JOB:
 CONSULTANCY SERVICES FOR FEASIBILITY STUDY OF PRIORITY PROJECTS UNDER POLLUTION ABATEMENT OF RIVER GANGA IN VARANASI

DRAWING TITLE:
 INTERCEPTOR ALIGNMENT AND SECONDARY SEWERS FOR ASSI NALA

CHECKED BY: SAURABH MISRA		APPROVED BY: V.N.SONTAKKE	
DRAWN	PAWAR	SCALE	NTS
DESIGNED	P.N.P.	DATE	25/06/2004
SURVEYED	K.S.A.		
DRAWING NO. VNS-PP-IC-1			Sr. 5



MWH INDIA PRIVATE LIMITED
 133, LUDYOG BHAVAN, SONAWALA ROAD
 GOREGAON (EAST), MUMBAI - 400 063
 INDIA
 PHONE : (91) 22 28717 165
 FAX : (91) 22 28717 133
 E-MAIL : mwhindia@vsnl.com

THIS DRAWING CONTAINS CONFIDENTIAL PROPRIETARY INFORMATION OF MWH INDIA PVT. LTD. AND IS NOT TO BE DISCLOSED TO THE PUBLIC OR TO COMPETITORS UNLESS OTHERWISE AUTHORIZED IN WRITING BY MWH INDIA PVT. LTD.

NOTES:
 1) ALL DIMENSIONS ARE IN MILLIMETRE, AND LEVELS ARE IN METRES.

LEGEND :-
 ROAD
 NALLA
 SEWER PIPE

REFERENCE DRAWING:
 1) FOR LAYOUT DRAWING REFER BASE MAP WITH WARD BOUNDARIES PROPOSED SEWERAGE FACILITIES DRAWING NO. MWH/160/2003
 2) FOR PLAN SHOWING LOCATIONS OF NALLA AND DIVERSION ARRANGEMENTS ON VARUNA RIVER BANKS REFER DWG.NO. MWH/160/4007

INST.					
ELEC.					
MECH.					
STRU.					
CIVIL					
REV NO.	0	1	2	3	4

REV.	DESCRIPTION OF REVISIONS	DATE	CHECKED
------	--------------------------	------	---------

CLIENT:
 JAPAN INTERNATIONAL COOPERATION AGENCY
 TOKYO ENGINEERING CONSULTANTS CO., LTD.
 CII ENGINEERING INTERNATIONAL CO., LTD.

JOB:
 CONSULTANCY SERVICES FOR FEASIBILITY STUDY OF PRIORITY PROJECTS UNDER POLLUTION ABATEMENT OF RIVER GANGA IN VARANASI

DRAWING TITLE:
 CROSS SECTIONS VIEWS OF SEWER NETWORK AT JUNCTIONS OF PROPOSED INTERCEPTORS OF NALLA

CHECKED BY: SAURABH MISRA
 APPROVED BY: V.N. SONTAKKE

DRAWN: D.S.KURDEKAR
 DESIGNED: M.D.NAGVEKAR
 SURVEYED: KSA
 SCALE: N.T.S.
 DATE: 24/06/2004

DRAWING NO.
 VNS-PP-IC-2

12 11 10 9 8 7 6 5 4 3 2 1

MWH INDIA PRIVATE LIMITED
 133, LUDYOG BHAVAN, SONAWALA ROAD
 GOREGAON (EAST), MUMBAI - 400 063
 INDIA
 PHONE : (91) 22 28717 165
 FAX : (91) 22 28717 133
 E-MAIL : mwhindia@vsnl.com

THIS DRAWING CONTAINS CONFIDENTIAL PROPRIETARY INFORMATION OF MWH INDIA PVT. LTD. AND IS NOT TO BE DISCLOSED TO THE PUBLIC OR TO COMPETITORS UNLESS OTHERWISE AUTHORIZED IN WRITING BY MWH INDIA PVT. LTD.

NOTES:
 1) PERMANENT BENCH MARK TAKEN ON RAILWAY BRIDGE NEAR CHOUKA GHAT JUNCTION 79.705 M.
 2) ALL THE LEVELS ARE IN METERS.

LEGEND:
 REFERENCE POINT FOR L-SECTION b1

REFERENCE DRAWING:
 FOR LAYOUT DRAWING REFER BASE MAP WITH WARD BOUNDARIES PROPOSED SEWERAGE FACILITIES DRAWING NO. MWH/160/2003
 FOR PLAN SHOWING INTERCEPTOR ALIGNMENT & SECONDARY SEWER FOR ASSI NALA DRAWING NO. MWH/160/4008

INST.					
ELEC.					
MECH.					
STRU.					
CIVIL					
REV NO.	0	1	2	3	4
1	CHANGE IN DESIGN POPULATION AND INTERCEPTOR NAKKHA NALA ADDED	06/08/04			
REV.	DESCRIPTION OF REVISIONS	DATE	CHECKED		

CLIENT:
 JAPAN INTERNATIONAL COOPERATION AGENCY
 TOKYO ENGINEERING CONSULTANTS CO., LTD.
 CTI ENGINEERING INTERNATIONAL CO., LTD.

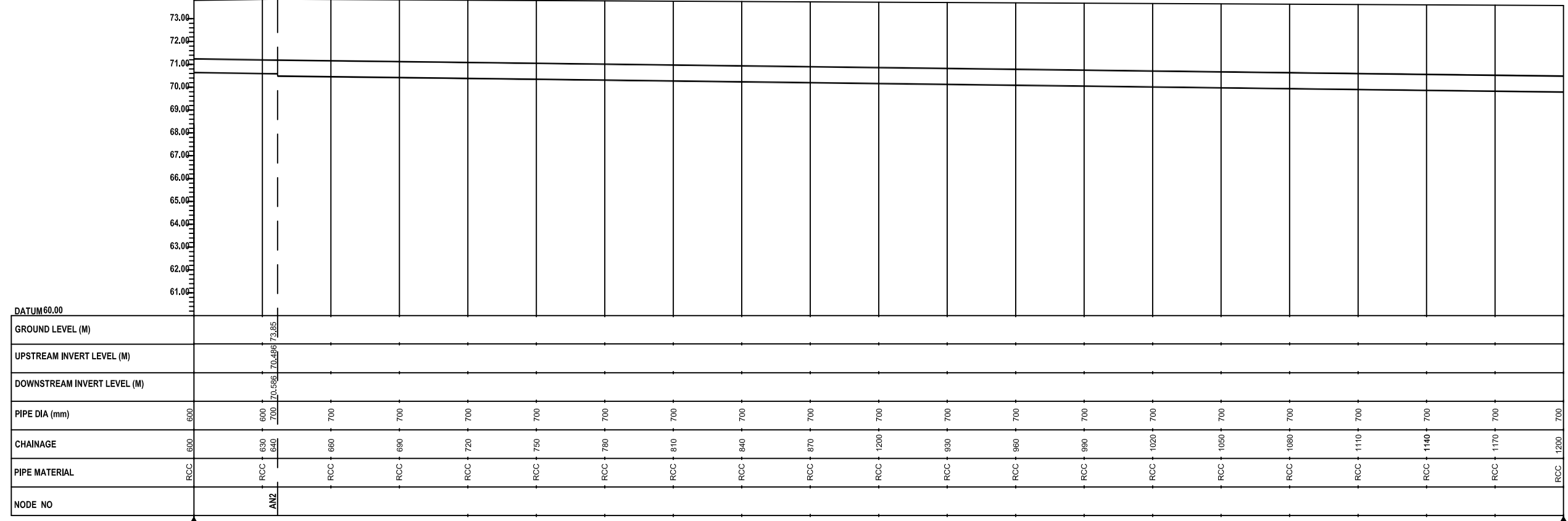
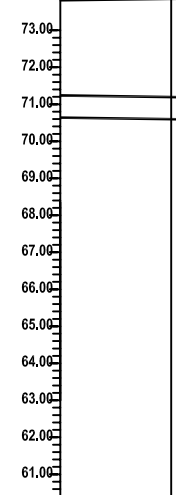
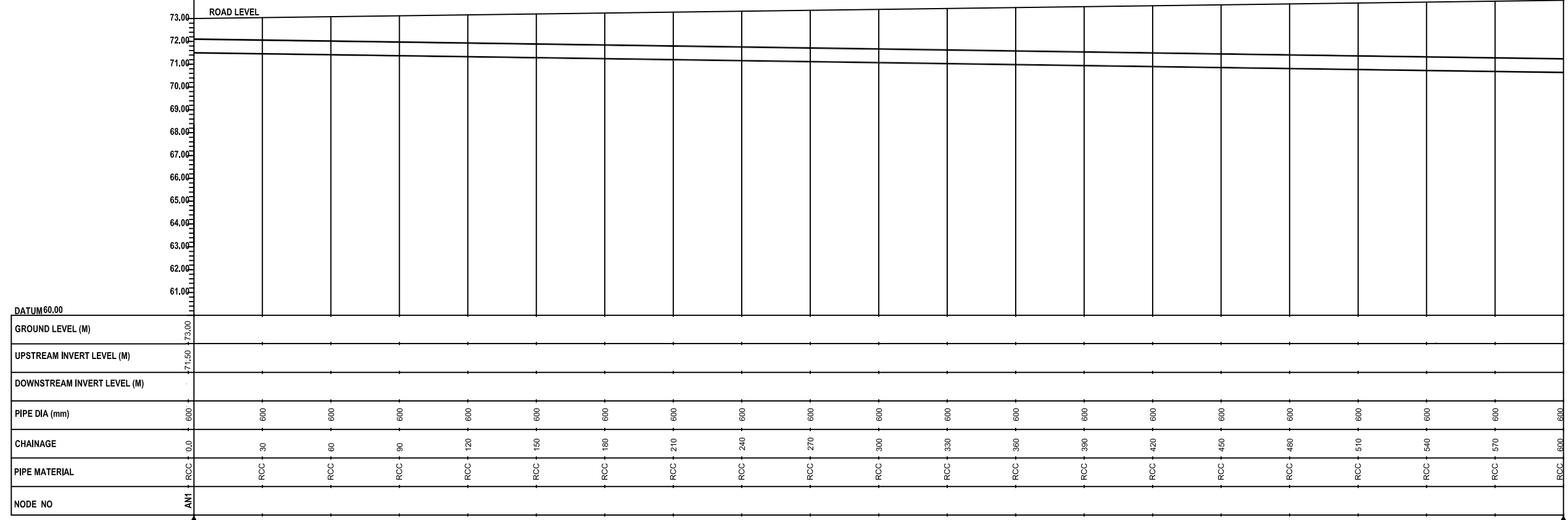
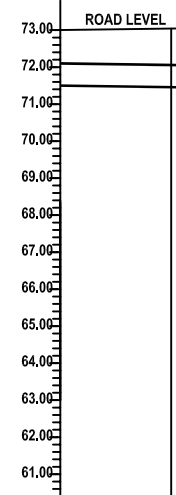
JOB:
 CONSULTANCY SERVICES FOR FEASIBILITY STUDY OF PRIORITY PROJECTS UNDER POLLUTION ABATEMENT OF RIVER GANGA IN VARANASI

DRAWING TITLE:
 L SECTION OF SEWER ALIGNMENT ALONG RIGHT BANK OF ASSI NALA -(b0 to b2)

CHECKED BY: SAURABH MISRA		APPROVED BY: V.N.SONTAKKE	
DRAWN H.S.PAWAR	DESIGNED KSA	SCALE H=1:2000 V=1:200	DATE 25/06/2004

DRAWING NO.
 VNS-PP-IC-3

SHEET
 1 OF 5
 7



L-SECTION OF ASSI NALA

12 11 10 9 8 7 6 5 4 3 2 1