

UNITS LIST			
Unit No.	Units.	Total Nos.	Size (m)
1.	Inlet Chamber and Pump House	1	
2.	Screens	Phase-I 3 Phase-II 1	7.0x2.0x1.0 SWD+0.3FB
3.	Grit Chamber	Phase-I 3 Phase-II 1	6.8x6.8x1.0 SWD+0.3FB
4.	Division Chamber - 1		
4a.	Feed Inlet Box		
5.	UASB Reactor	Phase-I 5 Phase-II 1	32.0x36.0x7.5 SWD+0.5FB
6.	Sludge Drying Beds	Phase-I 6 Phase-II 14	14.3x14.3x0.2
7.	Recycling Pump House		
8.	Division Chamber - 2		
9.	Aerated Lagoon	Phase-I 2 Phase-II 1	80.0x240.0x4.5 SWD+1FB
10.	Chlorine Contact Tank	Phase-I 1 Phase-II 1	21.500x42.500
11.	Chlorination Bldg.		10.00x4.50
12.	Treated Effluent Sump Cum Pump House		
13.	Administration Bldg.		80.0 sqm
14.	UPSEB Room		5.0x4.0
15.	Metering Room		5.0x2.5
16.	HT Room		5.0x4.0
17.	Transformer Room		5.0x3.0
18.	Transformer Room		5.0x5.0
19.	LT Room		10.0x5.0
20.	DG Set Room		6.0x4.5
21.	Guard Room		2.0x2.0

**NOTES :-**  
 1. ALL DIMENSIONS & LEVELS ARE IN METER.  
 2. ONLY WRITTEN DIMENSIONS ARE TO BE FOLLOWED. DIMENSIONS ARE NOT TO BE SCALED.

**LEGEND :-**  
 [Solid Yellow Line] PRESENT (PHASE - I)  
 [Dashed Yellow Line] FUTURE (PHASE - II)

**REFERENCE DRAWING:**  
 1) SITE PLAN REFER DRG. NO.-ALD-TP-D-RAJ-1  
 2) HYDRAULIC FLOW DIAGRAM REFER DRG. NO.-ALD-TP-D-RAJ-3

INST.	DATE	CHECKED			
ELEC.					
MECH.					
STRU.					
CML.					
REV. NO.	0	1	2	3	4

REV.	DESCRIPTION OF REVISIONS	DATE	CHECKED

CHECKED BY: A.Bhatnagar	CHECK	APPROVED BY: D.Sarkar	APPROVE
DRAWN S.Mitra	SCALE 1:1000	DESIGNED R.Mittal	DATE 03-02-2005
SURVEYED BY S.Sharma			

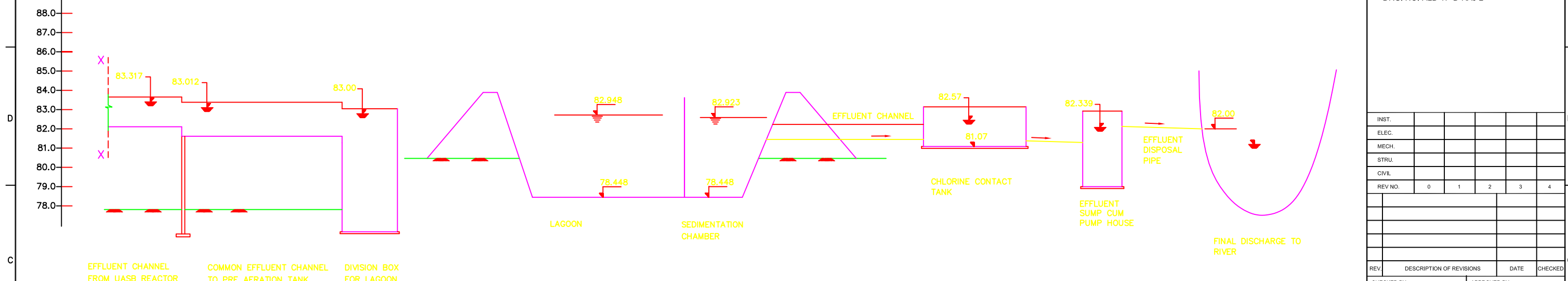
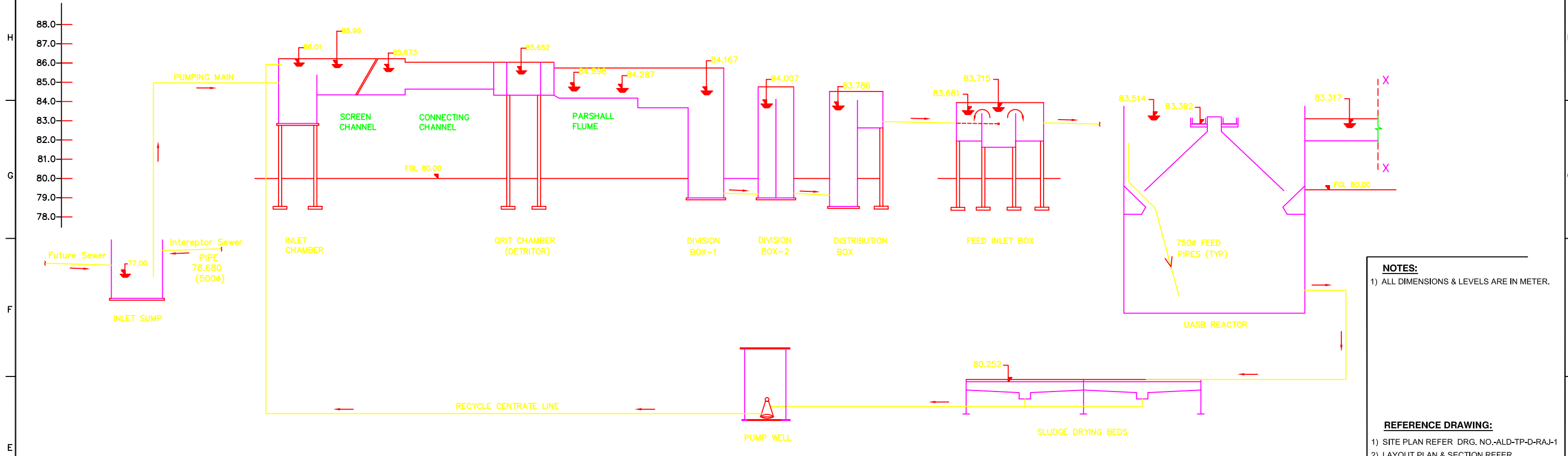
**JICA** JAPAN INTERNATIONAL COOPERATION AGENCY  
 CONSULTANTS:  
 TOKYO ENGINEERING CONSULTANTS CO., LTD.  
 CTI ENGINEERING INTERNATIONAL CO., LTD.  
 STUP CONSULTANTS LTD.

**PROJECT:**  
 THE STUDY ON WATER QUALITY MANAGEMENT PLAN FOR GANGA RIVER IN THE REPUBLIC OF INDIA  
 FEASIBILITY STUDY FOR ALLAHABAD CITY

**CORRIDOR:** District - D  
 RAJAPUR - STP (2/7)

**SHEET CONTENTS:**  
 LAYOUT PLAN & SECTION

DRAWING NO. ALD-TP-D-RAJ-2  
 SHEET NO. 178



**FLOW DIAGRAM**

**NOTES:**  
 1) ALL DIMENSIONS & LEVELS ARE IN METER.

**REFERENCE DRAWING:**  
 1) SITE PLAN REFER DRG. NO.-ALD-TP-D-RAJ-1  
 2) LAYOUT PLAN & SECTION REFER DRG. NO.-ALD-TP-D-RAJ-2

INST.					
ELEC.					
MECH.					
STRU.					
CIVIL					
REV. NO.	0	1	2	3	4

REV.	DESCRIPTION OF REVISIONS	DATE	CHECKED
CHECKED BY:	A. Bhatnagar	CHECK	APPROVED BY: D. Sarkar
DRAWN	S. Mitra	SCALE	APPROVE
DESIGNED	R. Mittal	SCALE	
SURVEYED		DATE	06 - 01 - 2005

**JICA** JAPAN INTERNATIONAL COOPERATION AGENCY

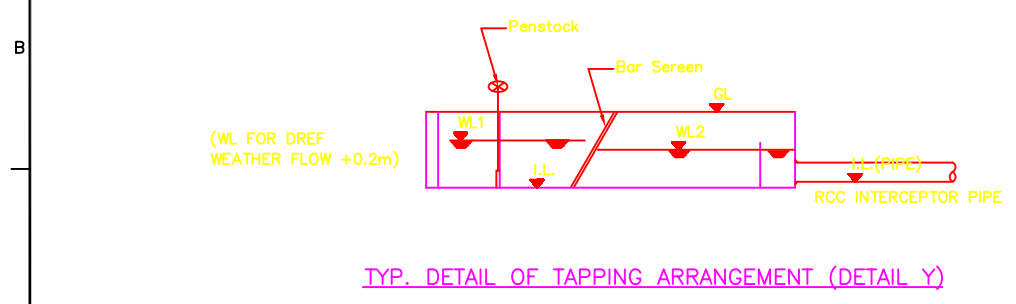
CONSULTANTS:  
 TOKYO ENGINEERING CONSULTANTS CO., LTD.  
 CTI ENGINEERING INTERNATIONAL CO., LTD.  
 STUP CONSULTANTS LTD.

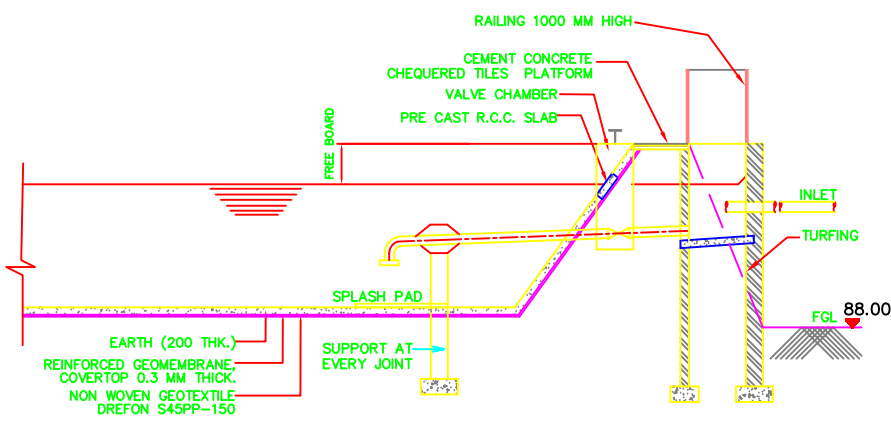
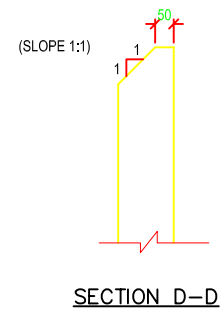
PROJECT:  
 THE STUDY ON WATER QUALITY MANAGEMENT PLAN FOR GANGA RIVER IN THE REPUBLIC OF INDIA  
 FEASIBILITY STUDY FOR ALLAHABAD CITY

CORRIDOR: District - D  
 RAJAPUR - STP (3/7)

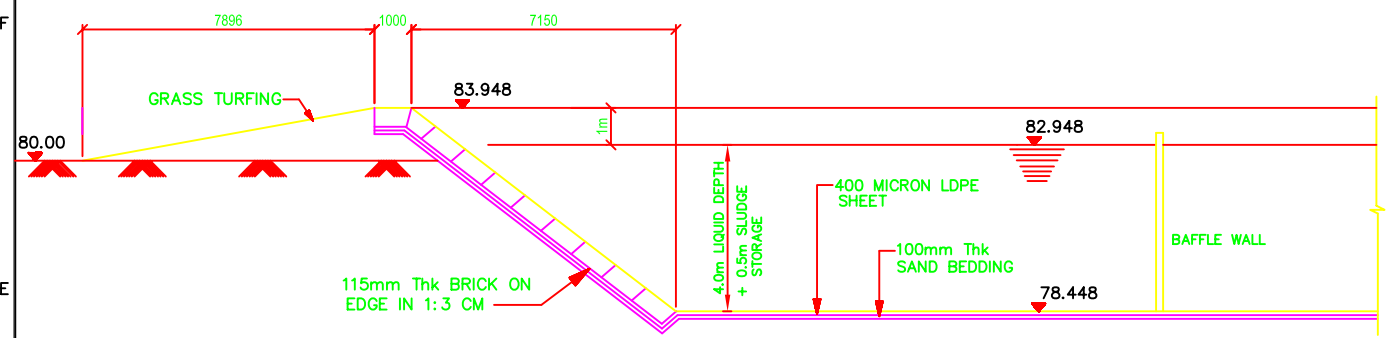
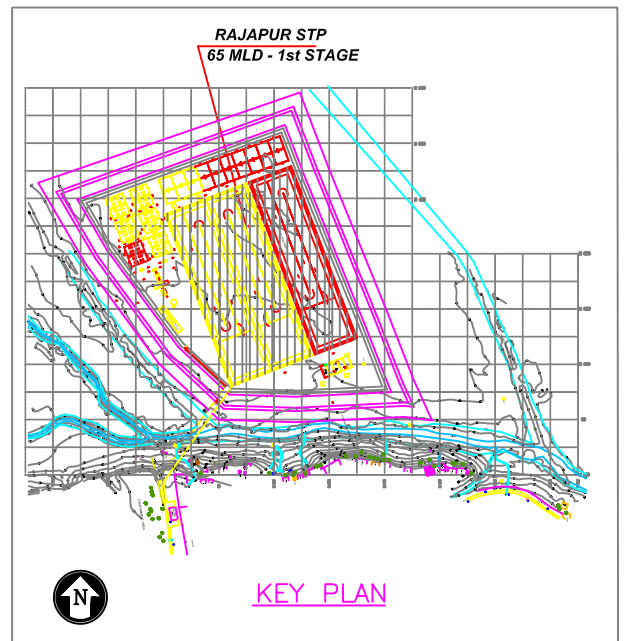
SHEET CONTENTS:  
 HYDRAULIC FLOW DIAGRAM

DRAWING NO. ALD - TP - D - RAJ - 3  
 SHT. NO. 179

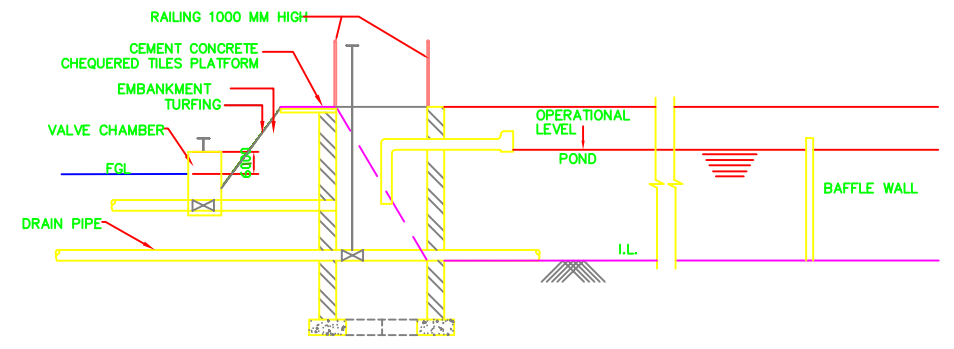




SECTION B-B  
TYPICAL DETAILS OF INLET CHAMBER



SECTION A-A

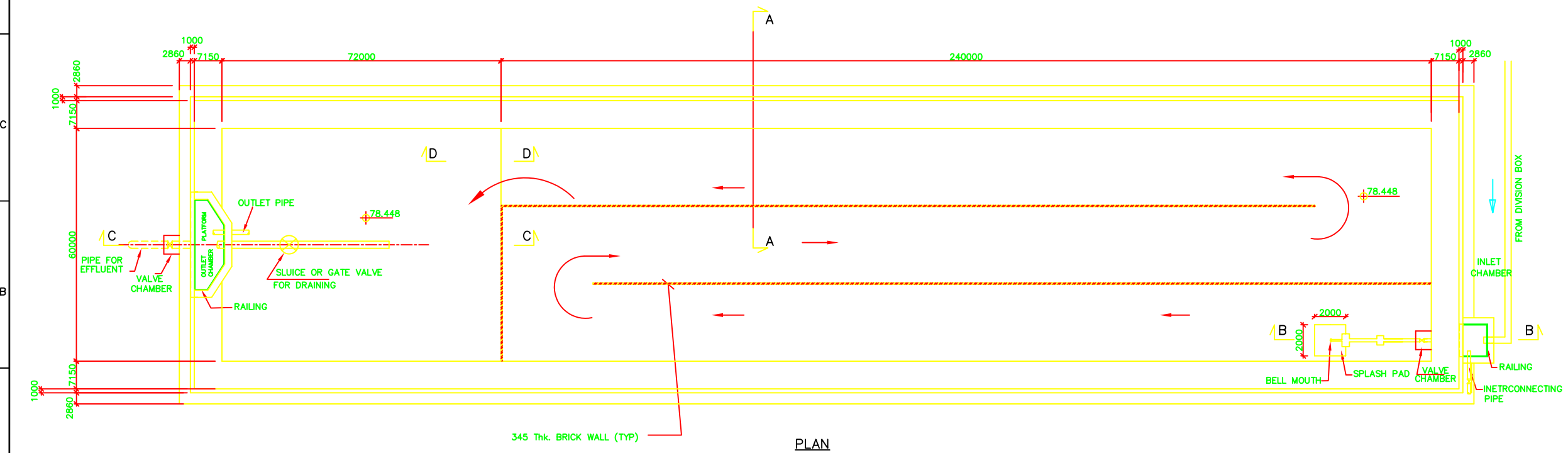


SECTION C-C  
TYPICAL DETAILS OF OUTLET CHAMBER

**NOTES :-**  
 1. ALL DIMENSIONS ARE IN MM AND LEVELS ARE IN METER.  
 2. ONLY WRITTEN DIMENSIONS ARE TO BE FOLLOWED. DIMENSIONS ARE NOT TO BE SCALED.

**LEGEND :-**  
 [Solid line] PRESENT (PHASE - I)  
 [Dashed line] FUTURE (PHASE -II)

**REFERENCE DRAWING:**  
 1) SITE PLAN REFER DRG. NO.-ALD-TP-D-RAJ-1  
 2) LAYOUT PLAN & SECTION REFER DRG. NO.-ALD-TP-D-RAJ-2  
 3) HYDRAULIC FLOW DIAGRAM REFER DRG. NO.-ALD-TP-D-RAJ-3



PLAN

INST.					
ELEC.					
MECH.					
STRU.					
CIVIL					
REV NO.	0	1	2	3	4

REV.	DESCRIPTION OF REVISIONS	DATE	CHECKED

CHECKED BY: A.Bhatnagar		APPROVED BY: D.Sarkar	
DRAWN S.Mitra	CHECK	APPROVE	
DESIGNED R.Mittal	SCALE 1:300, 1:20		
SURVEYED S.Sharma	DATE 3-02-2005		

**JICA** JAPAN INTERNATIONAL COOPERATION AGENCY

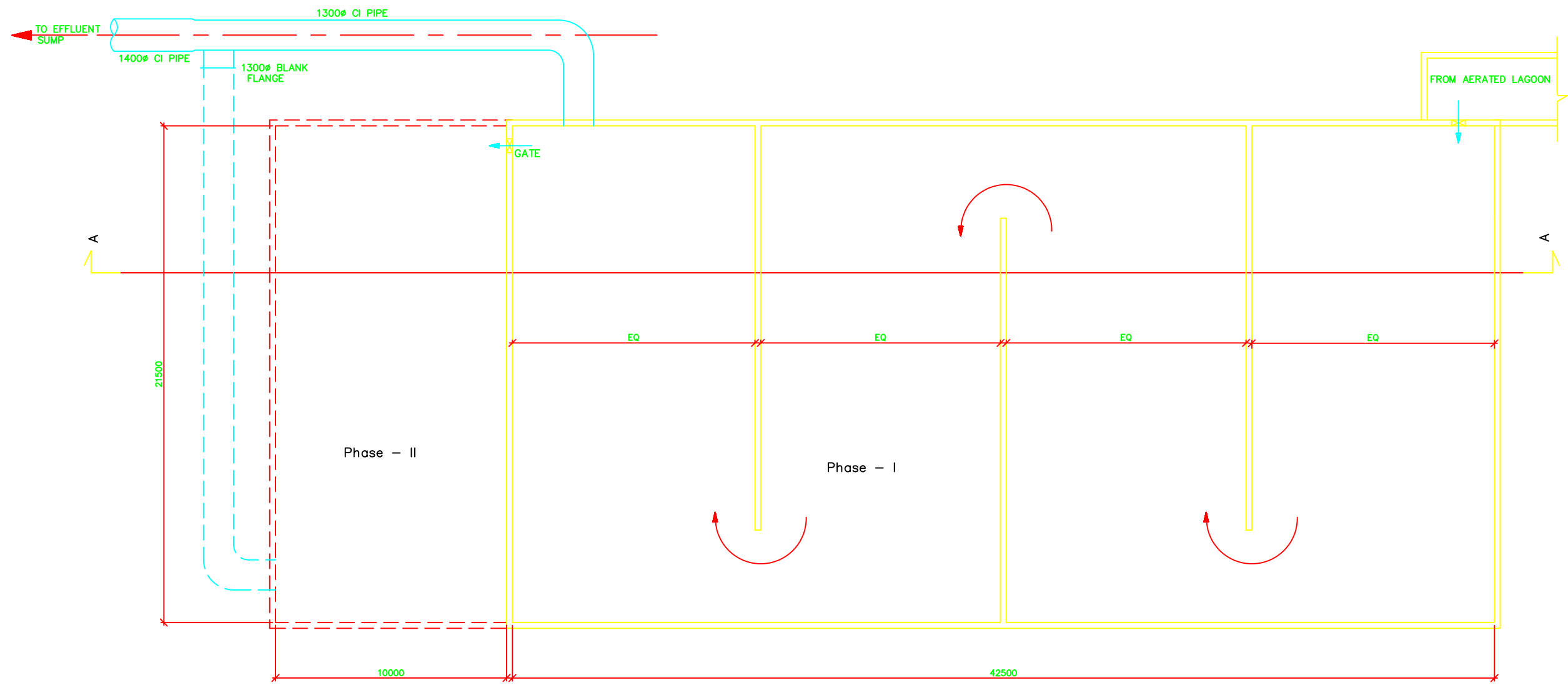
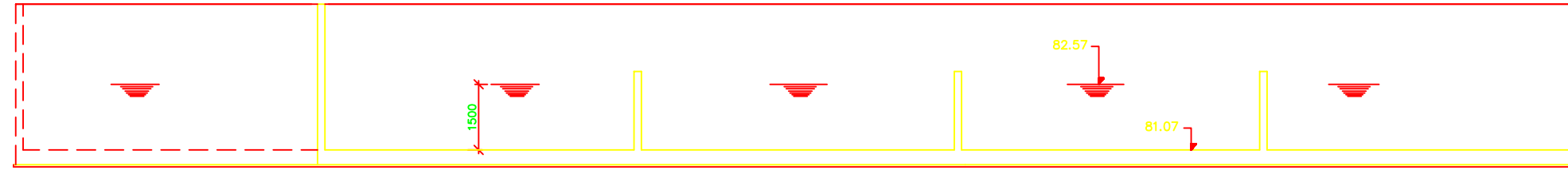
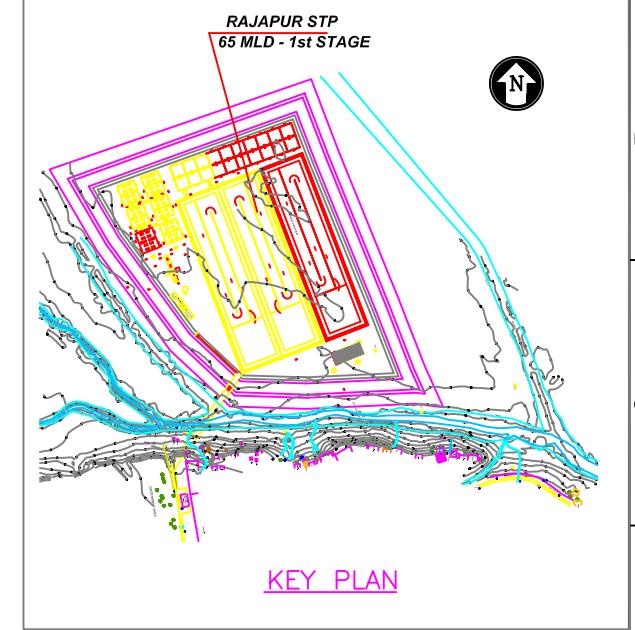
CONSULTANTS:  
 TOKYO ENGINEERING CONSULTANTS CO., LTD.  
 CTI ENGINEERING INTERNATIONAL CO., LTD.  
 STUP CONSULTANTS LTD.

PROJECT:  
 THE STUDY ON WATER QUALITY MANAGEMENT PLAN FOR GANGA RIVER IN THE REPUBLIC OF INDIA  
 FEASIBILITY STUDY FOR ALLAHABAD CITY

CORRIDOR: District - D  
 RAJAPUR - STP (4/7)

SHEET CONTENTS:  
 G.A. OF AERATED LAGOON

DRAWING NO. ALD - TP - D - RAJ - 4 SHT. NO. 180



**NOTES :-**

1. ALL DIMENSIONS ARE IN MM AND LEVELS ARE IN METER.
2. ONLY WRITTEN DIMENSIONS ARE TO BE FOLLOWED. DIMENSIONS ARE NOT TO BE SCALED.

**LEGEND :-**

- PRESENT (PHASE - I)
- FUTURE (PHASE -II)

**REFERENCE DRAWING:**

- 1) SITE PLAN REFER DRG. NO.-ALD-TP-D-RAJ-1
- 2) LAYOUT PLAN & SECTION REFER DRG. NO.-ALD-TP-D-RAJ-2
- 3) HYDRAULIC FLOW DIAGRAM REFER DRG. NO.-ALD-TP-D-RAJ-3

INST.					
ELEC.					
MECH.					
STRU.					
CIVIL					
REV. NO.	0	1	2	3	4

CHECKED BY:	APPROVED BY:	
A.Bhatnagar	D.Sarkar	
CHECK	APPROVE	
DRAWN	S.Mitra	SCALE
DESIGNED	R.Mittal	SCALE
SURVEYED	S.Sharma	DATE
		3-02-2005

**JICA** JAPAN INTERNATIONAL COOPERATION AGENCY

CONSULTANTS:

- TOKYO ENGINEERING CONSULTANTS CO., LTD.
- CTI ENGINEERING INTERNATIONAL CO., LTD.
- STUP CONSULTANTS LTD.

**PROJECT:**

THE STUDY ON WATER QUALITY MANAGEMENT PLAN FOR GANGA RIVER IN THE REPUBLIC OF INDIA

FEASIBILITY STUDY FOR ALLAHABAD CITY

**CORRIDOR:** District - D RAJAPUR- STP (5/7)

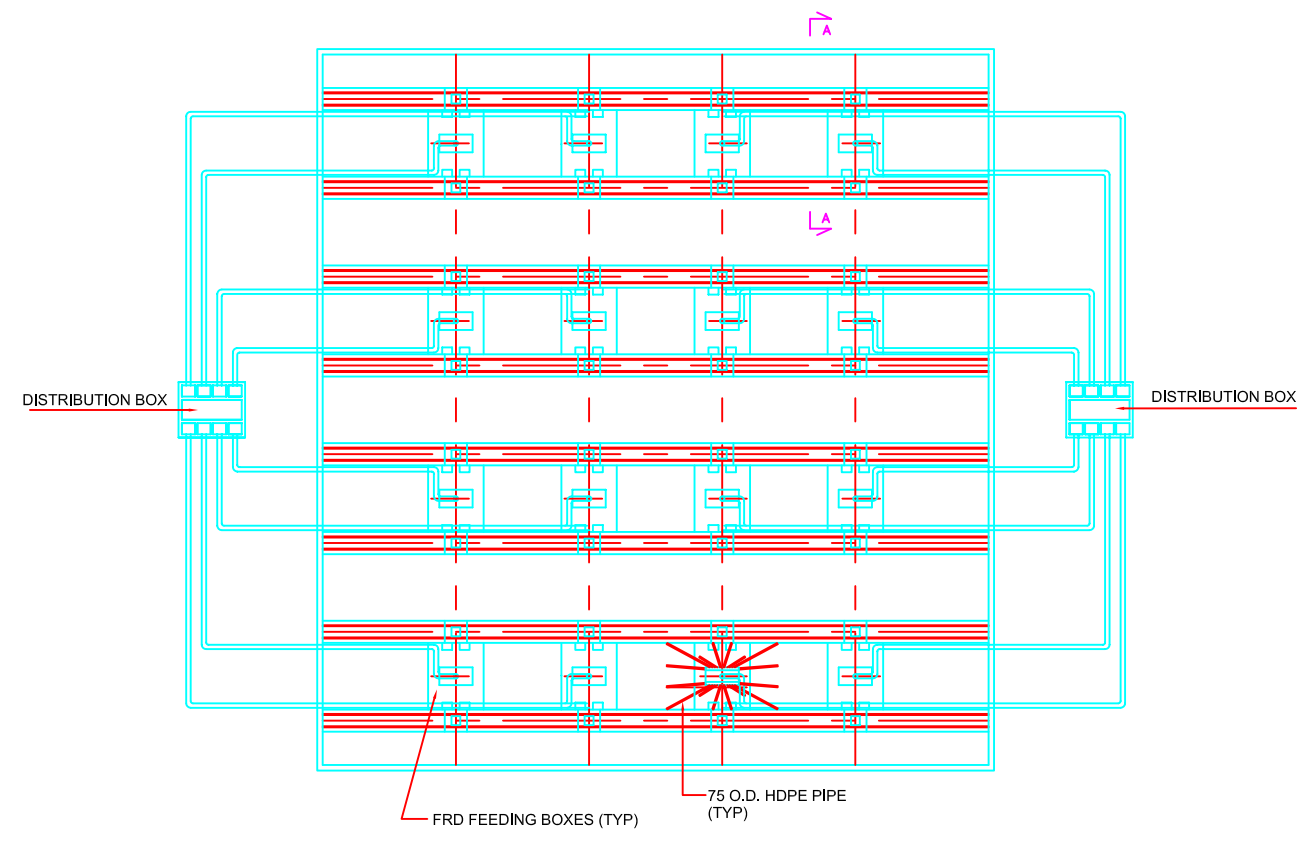
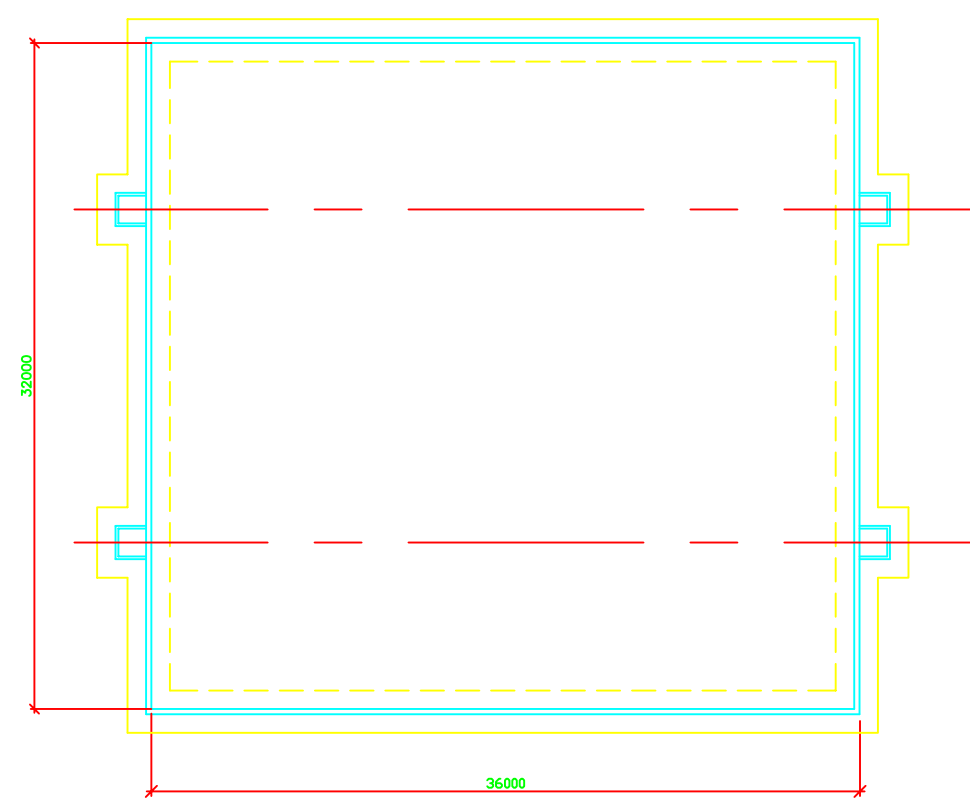
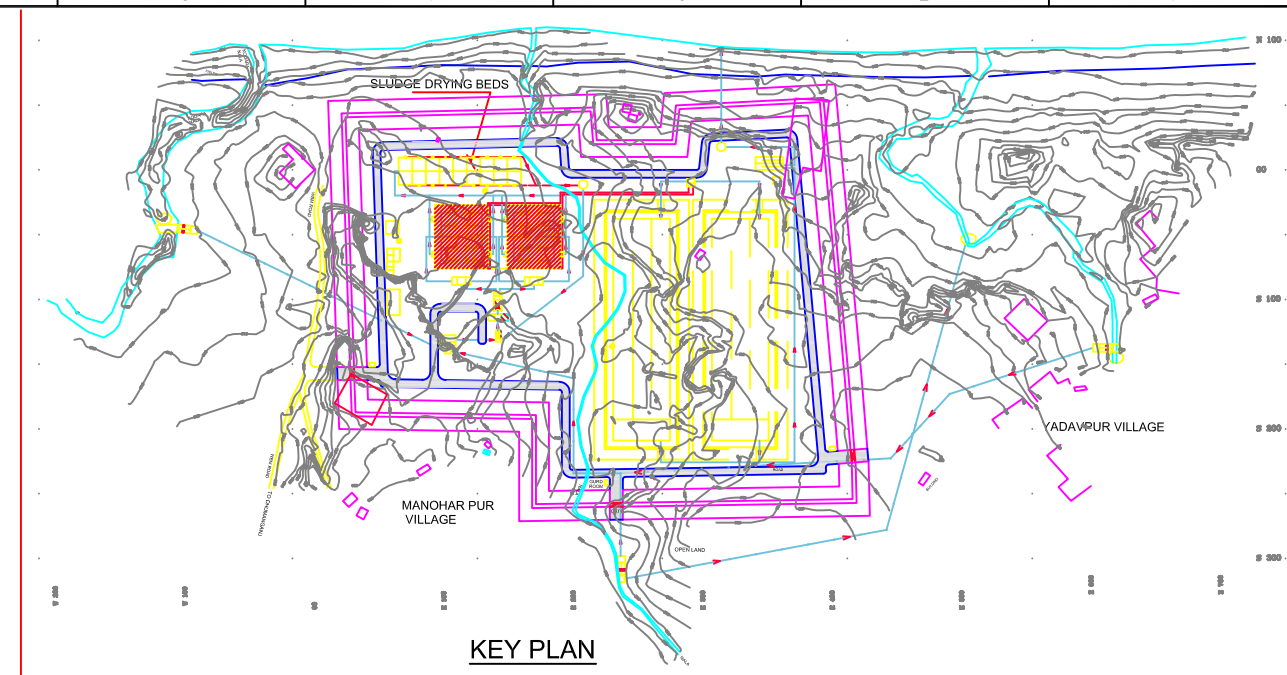
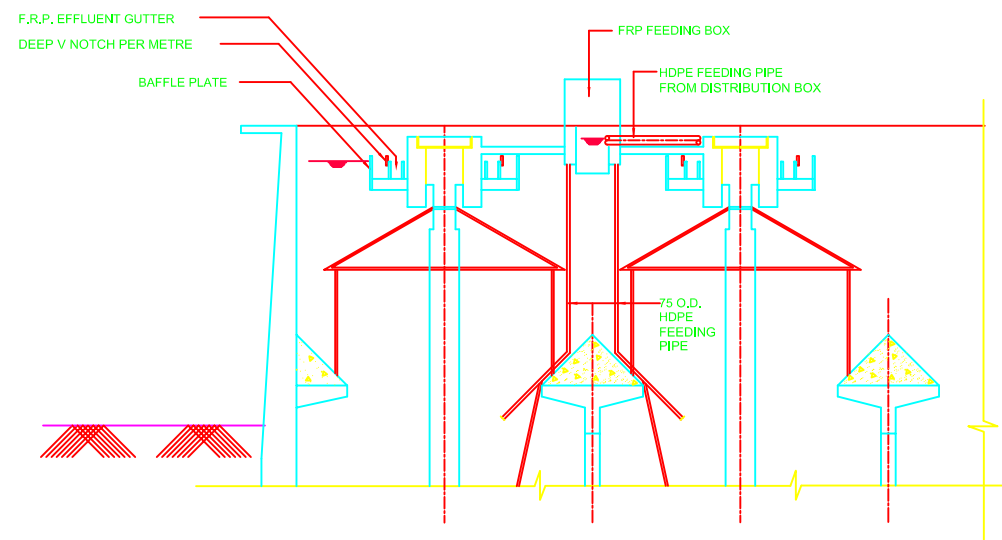
**SHEET CONTENTS:**

G.A.OF CHLORINE CONTACT TANK

**DRAWING NO.** ALD-TP-D-RAJ-5

**SHT. NO.** 181

**NOTES :-** CHLORINE MIXING ARRANGEMENT SHALL BE PROVIDED AS PER MANUFACTURE SPECIFICATION



**NOTES :-**

1. ALL DIMENSIONS ARE IN MM AND LEVELS ARE IN METER.
2. ONLY WRITTEN DIMENSIONS ARE TO BE FOLLOWED. DIMENSIONS ARE NOT TO BE SCALED.

**REFERENCE DRAWING:**

- 1) SITE PLAN REFER DRG. NO.-ALD-TP-D-RAJ-1
- 2) LAYOUT PLAN & SECTION REFER DRG. NO.-ALD-TP-D-RAJ-2
- 3) HYDRAULIC FLOW DIAGRAM REFER DRG. NO.-ALD-TP-D-RAJ-3

INST.					
ELEC.					
MECH.					
STRU.					
CIVIL					
REV. NO.	0	1	2	3	4

REV.	DESCRIPTION OF REVISIONS	DATE	CHECKED
CHECKED BY:	A. Bhatnagar	APPROVED BY:	D. Sarkar
DRAWN	S. Mitra	SCALE	1:100
DESIGNED	R. Mittal	DATE	3-2-2005
SURVEYED	S. Sharma		

**JICA** JAPAN INTERNATIONAL COOPERATION AGENCY

CONSULTANTS:

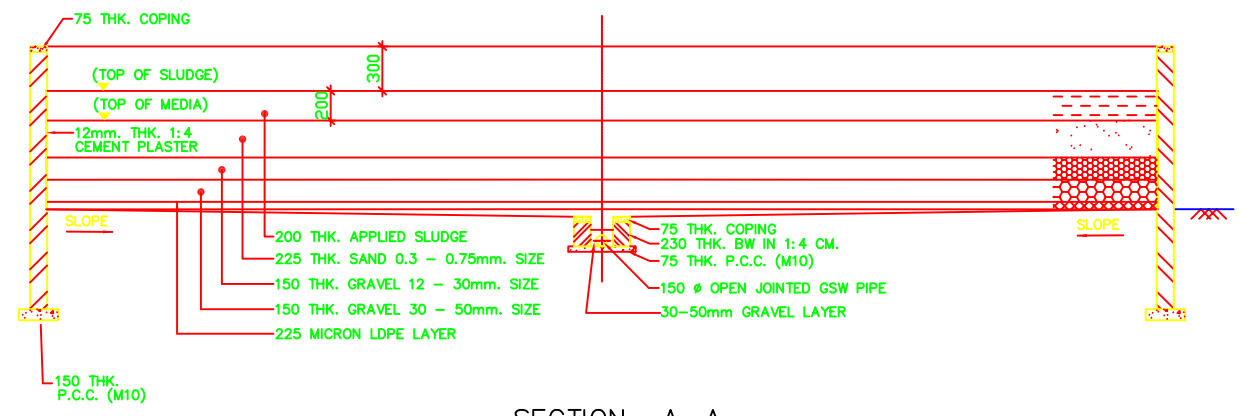
- TOKYO ENGINEERING CONSULTANTS CO., LTD.
- CTI ENGINEERING INTERNATIONAL CO., LTD.
- STUP CONSULTANTS LTD.

PROJECT:  
THE STUDY ON WATER QUALITY MANAGEMENT PLAN FOR GANGA RIVER IN THE REPUBLIC OF INDIA  
FEASIBILITY STUDY FOR ALLAHABAD CITY

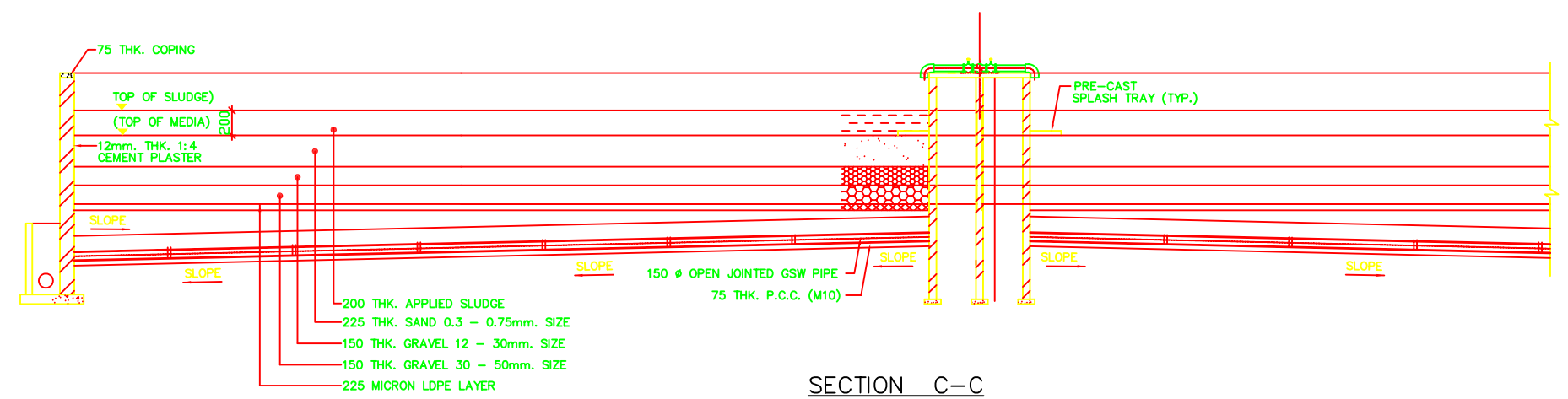
CORRIDOR: District - D  
RAJAPUR - STP (6/7)

SHEET CONTENTS:  
G.A. OF UASB REACTOR

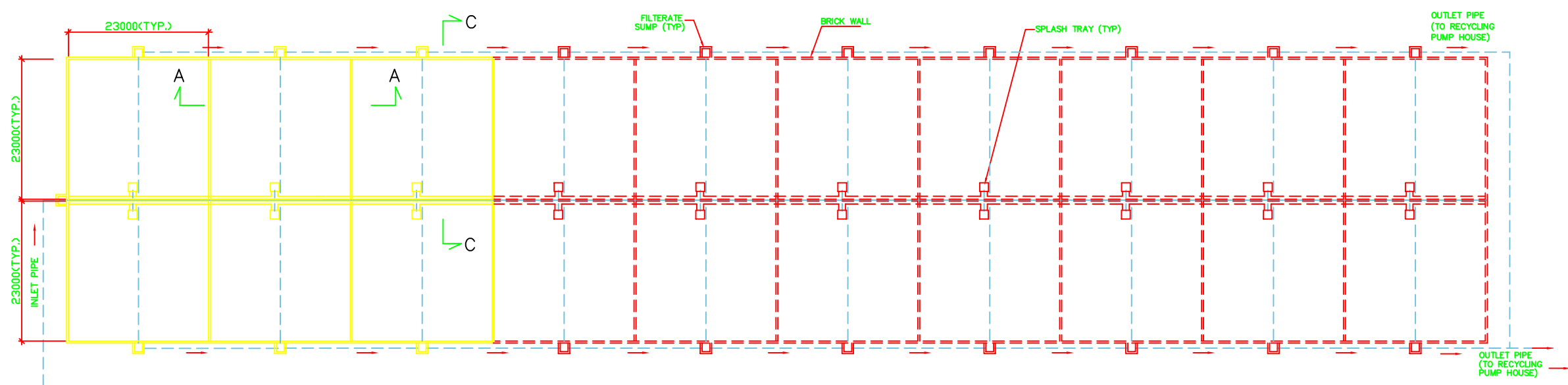
DRAWING NO. ALD - TP - D - RAJ - 6  
SHT. NO. 182



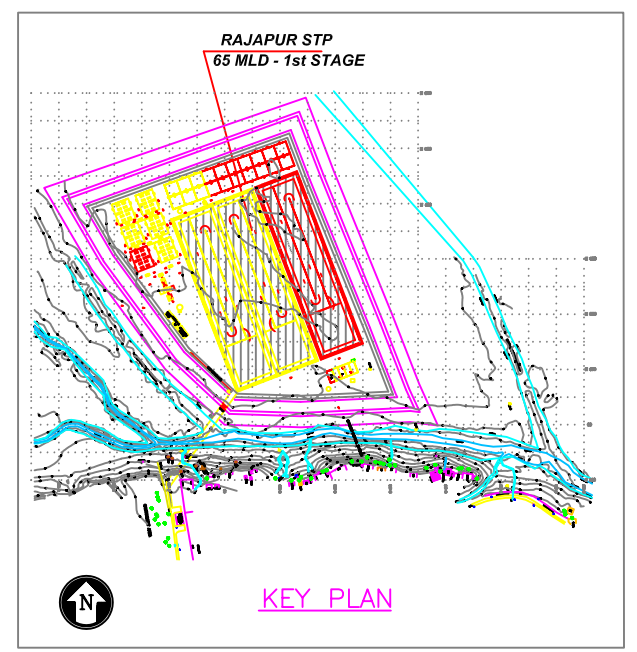
SECTION A-A



SECTION C-C



PLAN  
(SLUDGE DRYING BEDS)



- NOTES :-**
1. ALL DIMENSIONS ARE IN MM AND LEVELS ARE IN METER.
  2. ONLY WRITTEN DIMENSIONS ARE TO BE FOLLOWED. DIMENSIONS ARE NOT TO BE SCALED.

- LEGEND :-**
- PRESENT (PHASE - I)
  - FUTURE (PHASE -II)

- REFERENCE DRAWING:**
- 1) SITE PLAN REFER DRG. NO.-ALD-TP-D-RAJ-1
  - 2) LAYOUT PLAN & SECTION REFER DRG. NO.-ALD-TP-D-RAJ-2
  - 3) HYDRAULIC FLOW DIAGRAM REFER DRG. NO.-ALD-TP-D-RAJ-3

INST.					
ELEC.					
MECH.					
STRU.					
CIVIL					
REV NO.	0	1	2	3	4

REV.	DESCRIPTION OF REVISIONS	DATE	CHECKED
CHECKED BY:	A.Bhatnagar	APPROVED BY:	D.Sarkar
DESIGNED	R.Mittal	SCALE	1:400
SURVEYED	S.Sharma	DATE	03 - 02-2005

**JICA** JAPAN INTERNATIONAL COOPERATION AGENCY  
 CONSULTANTS:  
 TOKYO ENGINEERING CONSULTANTS CO., LTD.  
 CTI ENGINEERING INTERNATIONAL CO., LTD.  
 STUP CONSULTANTS LTD.

**PROJECT:**  
 THE STUDY ON WATER QUALITY MANAGEMENT PLAN FOR GANGA RIVER IN THE REPUBLIC OF INDIA  
 FEASIBILITY STUDY FOR ALLAHABAD CITY

**CORRIDOR:** District - D  
 RAJAPUR - STP (7/7)

**SHEET CONTENTS:**  
 LAYOUT PLAN OF SLUDGE DRYING BEDS

**DRAWING NO.** ALD-TP-D-RAJ-7  
**SHT. NO.** 183