

- NOTES:**
- 1) ALL DIMENSIONS & LEVELS ARE IN METER.
- REFERENCE DRAWING:**
- 1) LAYOUT PLAN REFER DRG.NO.-ALD-TP-B-ND-2
 - 2) HYDRAULIC FLOW DIAGRAM REFER DRG. NO.-ALD-TP-B-ND-3
 - 3) PRELIMINARY UNITS-PLAN & SECTION REFER DRG. NO.-ALD-TP-B-ND-4
 - 4) TYPICAL DETAILS OF POND & INLET/OUTLET ARRANGEMENT REFER DRG.NO.-ALD-TD-B-ND-5

- LEGEND**
- G GUARD ROOM
 - *—*—*— FENCING & BOUNDARY WALL

INST.					
ELEC.					
MECH.					
STRU.					
CIVIL					
REV. NO.	0	1	2	3	4

REV.	DESCRIPTION OF REVISIONS	DATE	CHECKED
CHECKED BY:	A.Bhatnagar	APPROVED BY:	D.Sarkar
DRAWN	M.Pahuja	CHECK	APPROVE
DESIGNED	R.Mittal	SCALE	1:2000
SURVEYED	S.Sharma	DATE	28-12-04

JICA JAPAN INTERNATIONAL COOPERATION AGENCY

CONSULTANTS:

- TOKYO ENGINEERING CONSULTANTS CO., LTD.
- CTI ENGINEERING INTERNATIONAL CO., LTD.
- STUP CONSULTANTS LTD.

PROJECT:
THE STUDY ON WATER QUALITY MANAGEMENT PLAN FOR GANGA RIVER IN THE REPUBLIC OF INDIA
FEASIBILITY STUDY FOR ALLAHABAD CITY

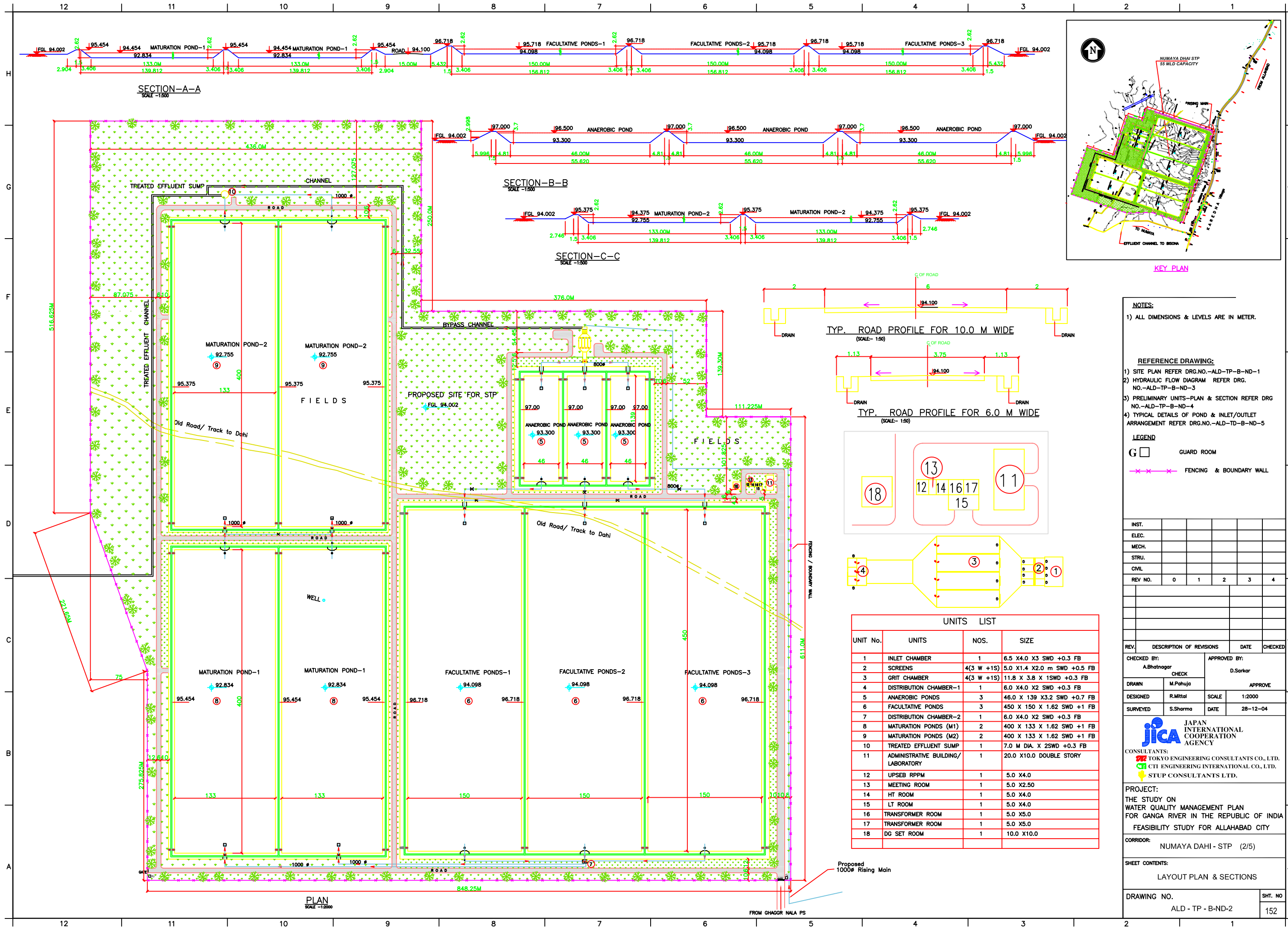
CORRIDOR:
NUMAYA DAHI - STP (1/5)

SHEET CONTENTS:
SITE PLAN

DRAWING NO.	ALD - TP -B- ND-1	SHT. NO.	151
-------------	-------------------	----------	-----

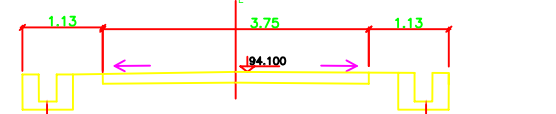
	PONDS						
	ANAEROBIC PONDS			FACULTATIVE PONDS			MATURATION POND
	1	2	3	1	2	1	2
INVERT LEVEL	93.300	94.098	94.098	94.098	92.834	92.755	
FGL	94.002	94.002	94.002	94.002	94.002	94.002	
TOP WATER LEVEL	96.500	95.718	95.718	95.718	94.454	94.375	
EMBANKMENT(E) TOP	97.000	96.718	96.718	96.718	95.454	95.375	
FREE BOARD	0.500	1.000	1.000	1.000	1.000	1.000	
P INNER SIDE WIDTH(B1)	4.810	3.406	3.406	3.406	3.406	3.406	
E TOP WIDTH (B2)	1.500	1.500	1.500	1.500	1.500	1.500	
E OUTER SIDE WIDTH(B3)	5.998	5.432	5.432	5.432	2.904	2.746	
P BOTTOM WIDTH (W1)	46.000	150.000	150.000	150.000	133.000	133.000	
P TOP WIDTH (W2)	55.620	156.612	156.612	156.612	139.812	139.812	

KAREDDHA Village

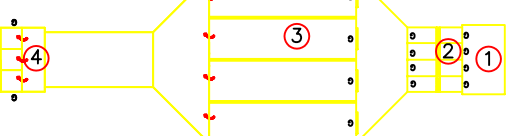
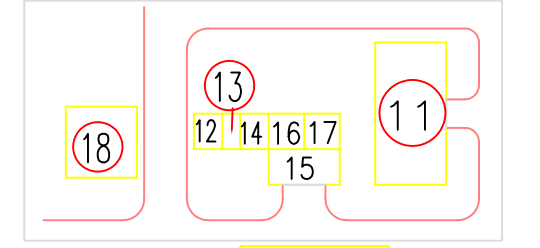


KEY PLAN

TYP. ROAD PROFILE FOR 10.0 M WIDE
(SCALE= 1:50)



TYP. ROAD PROFILE FOR 6.0 M WIDE
(SCALE= 1:50)



UNITS LIST			
UNIT No.	UNITS	NOS.	SIZE
1	INLET CHAMBER	1	6.5 X4.0 X3 SWD +0.3 FB
2	SCREENS	4(3 W +1S)	5.0 X1.4 X2.0 m SWD +0.5 FB
3	GRIT CHAMBER	4(3 W +1S)	11.8 X 3.8 X 1SWD +0.3 FB
4	DISTRIBUTION CHAMBER-1	1	6.0 X4.0 X2 SWD +0.3 FB
5	ANAEROBIC PONDS	3	46.0 X 139 X3.2 SWD +0.7 FB
6	FACULTATIVE PONDS	3	45.0 X 150 X 1.62 SWD +1 FB
7	DISTRIBUTION CHAMBER-2	1	6.0 X4.0 X2 SWD +0.3 FB
8	MATURATION PONDS (M1)	2	400 X 133 X 1.62 SWD +1 FB
9	MATURATION PONDS (M2)	2	400 X 133 X 1.62 SWD +1 FB
10	TREATED EFFLUENT SUMP	1	7.0 M DIA. X 2SWD +0.3 FB
11	ADMINISTRATIVE BUILDING/LABORATORY	1	20.0 X10.0 DOUBLE STORY
12	UPSEB RPPM	1	5.0 X4.0
13	MEETING ROOM	1	5.0 X2.50
14	HT ROOM	1	5.0 X4.0
15	LT ROOM	1	5.0 X4.0
16	TRANSFORMER ROOM	1	5.0 X5.0
17	TRANSFORMER ROOM	1	5.0 X5.0
18	DG SET ROOM	1	10.0 X10.0

NOTES:
1) ALL DIMENSIONS & LEVELS ARE IN METER.

REFERENCE DRAWING:
1) SITE PLAN REFER DRG.NO.-ALD-TP-B-ND-1
2) HYDRAULIC FLOW DIAGRAM REFER DRG. NO.-ALD-TP-B-ND-3
3) PRELIMINARY UNITS-PLAN & SECTION REFER DRG. NO.-ALD-TP-B-ND-4
4) TYPICAL DETAILS OF POND & INLET/OUTLET ARRANGEMENT REFER DRG.NO.-ALD-TD-B-ND-5

LEGEND
G □ GUARD ROOM
- - - - - FENCING & BOUNDARY WALL

INST.	ELEC.	MECH.	STRU.	CIVIL	
REV. NO.	0	1	2	3	4

REV.	DESCRIPTION OF REVISIONS	DATE	CHECKED

CHECKED BY: A.Bhatnagar
APPROVED BY: D.Sarkar
DRAWN: M.Pahuja
DESIGNED: R.Mittal
SURVEYED: S.Sharma

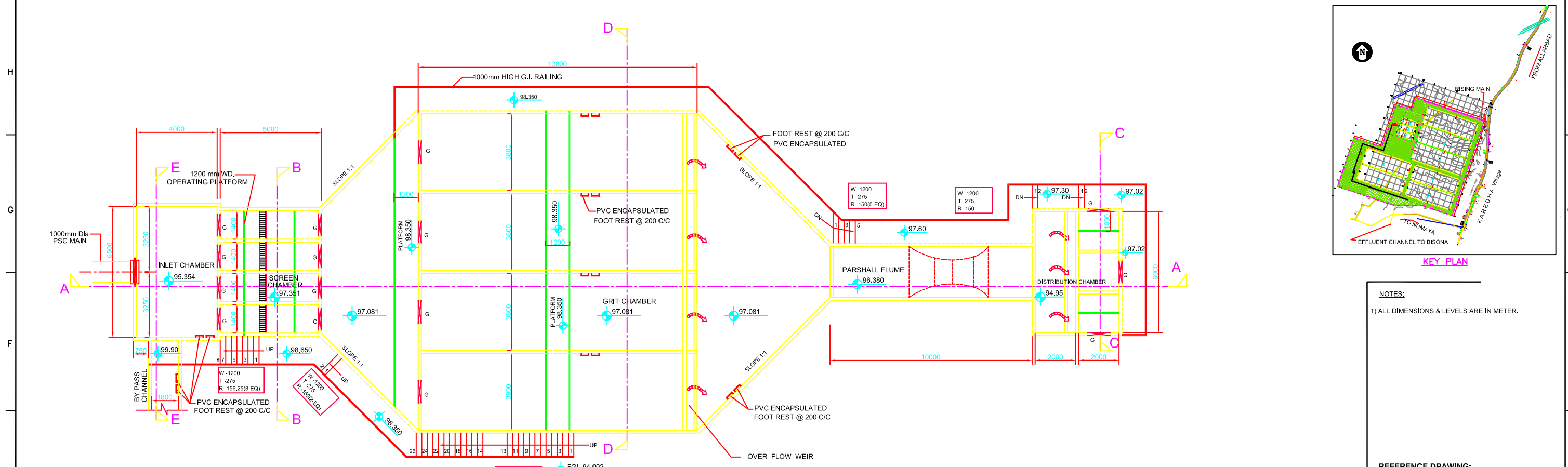
CONSULTANTS:
JICA JAPAN INTERNATIONAL COOPERATION AGENCY
TOKYO ENGINEERING CONSULTANTS CO., LTD.
CTI ENGINEERING INTERNATIONAL CO., LTD.
STUP CONSULTANTS LTD.

PROJECT:
THE STUDY ON WATER QUALITY MANAGEMENT PLAN FOR GANGA RIVER IN THE REPUBLIC OF INDIA
FEASIBILITY STUDY FOR ALLAHABAD CITY

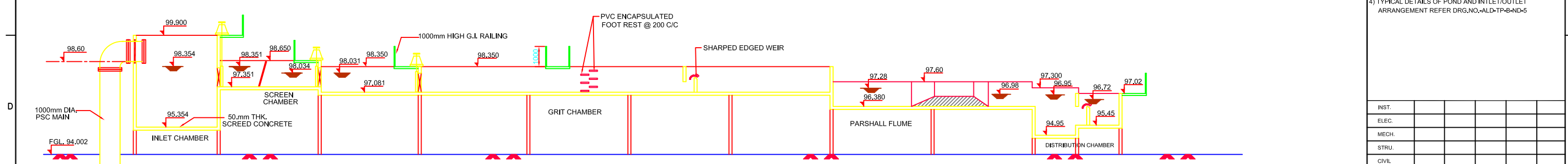
CORRIDOR:
NUMAYA DAHI - STP (2/5)

SHEET CONTENTS:
LAYOUT PLAN & SECTIONS

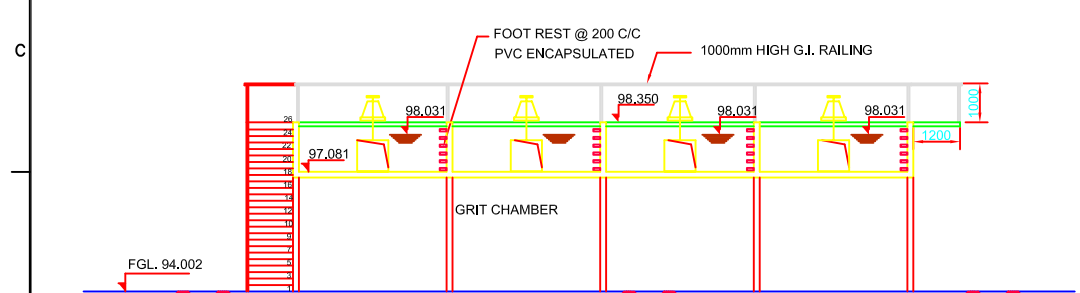
DRAWING NO. ALD-TP-B-ND-2
SHT. NO. 152



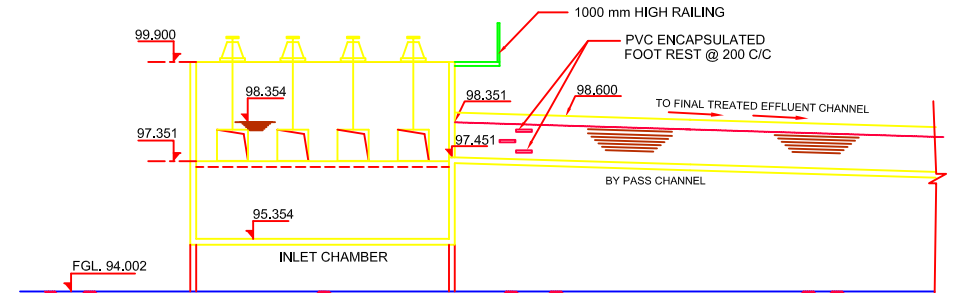
PLAN
SCALE: 1:100



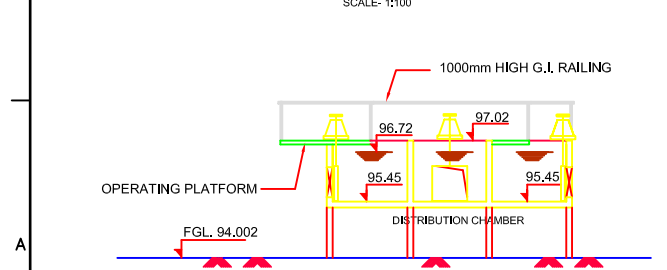
SECTION A-A
SCALE: 1:100



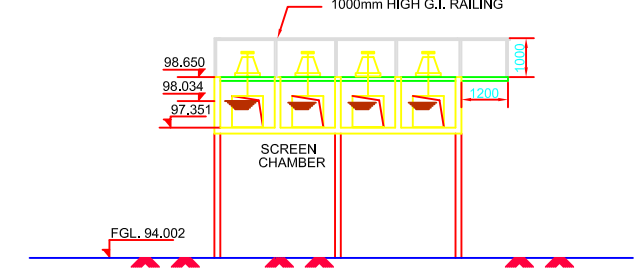
SECTION D-D
SCALE: 1:100



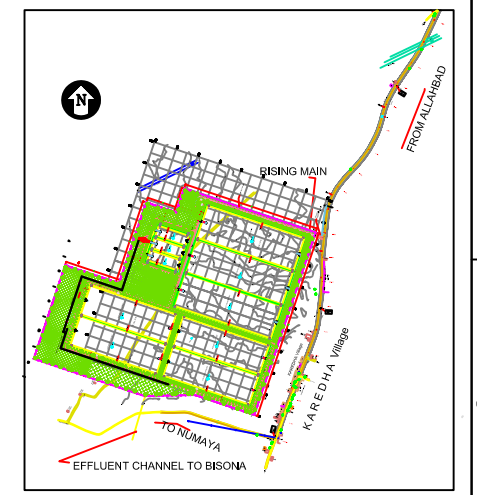
SECTION E-E
SCALE: 1:100



SECTION C-C
SCALE: 1:100



SECTION B-B
SCALE: 1:100



KEY PLAN

- NOTES:**
- 1) ALL DIMENSIONS & LEVELS ARE IN METER.
- REFERENCE DRAWING:**
- 1) SITE PLAN REFER DRG.NO.-ALD-TP-B-ND-1
 - 2) LAYOUT PLAN REFER DRG.NO.-ALD-TP-B-ND-2
 - 3) HYDRAULIC FLOW DIAGRAM REFER DRG NO.-ALD-TP-B-ND-3
 - 4) TYPICAL DETAILS OF POND AND INLET/OUTLET ARRANGEMENT REFER DRG.NO.-ALD-TP-B-ND-5

INST.					
ELEC.					
MECH.					
STRU.					
CIVIL					
REV NO.	0	1	2	3	4

REV.	DESCRIPTION OF REVISIONS	DATE	CHECKED
CHECKED BY:	A.Bhatnagar	CHECK	APPROVED BY: D.Sarkar
DRAWN	M.Pahuja	APPROVE	
DESIGNED	R.Mittal	SCALE	AS SHOWN
SURVEYED	S.Sharma	DATE	3-01-05

JICA JAPAN INTERNATIONAL COOPERATION AGENCY

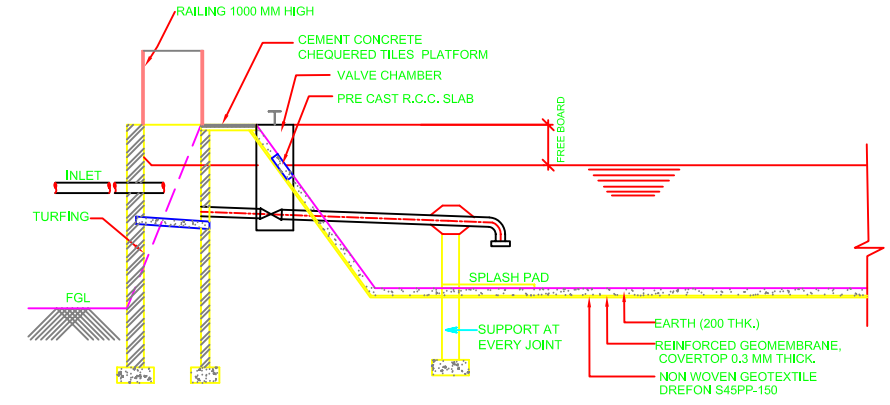
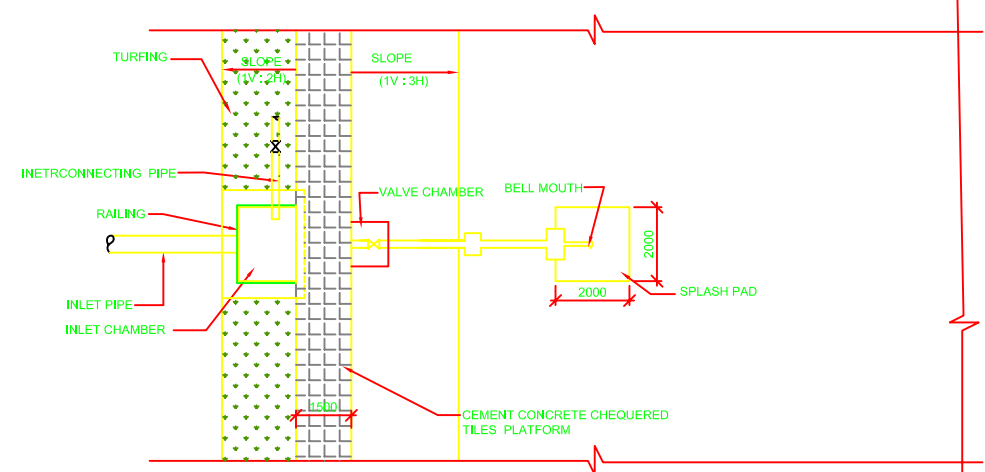
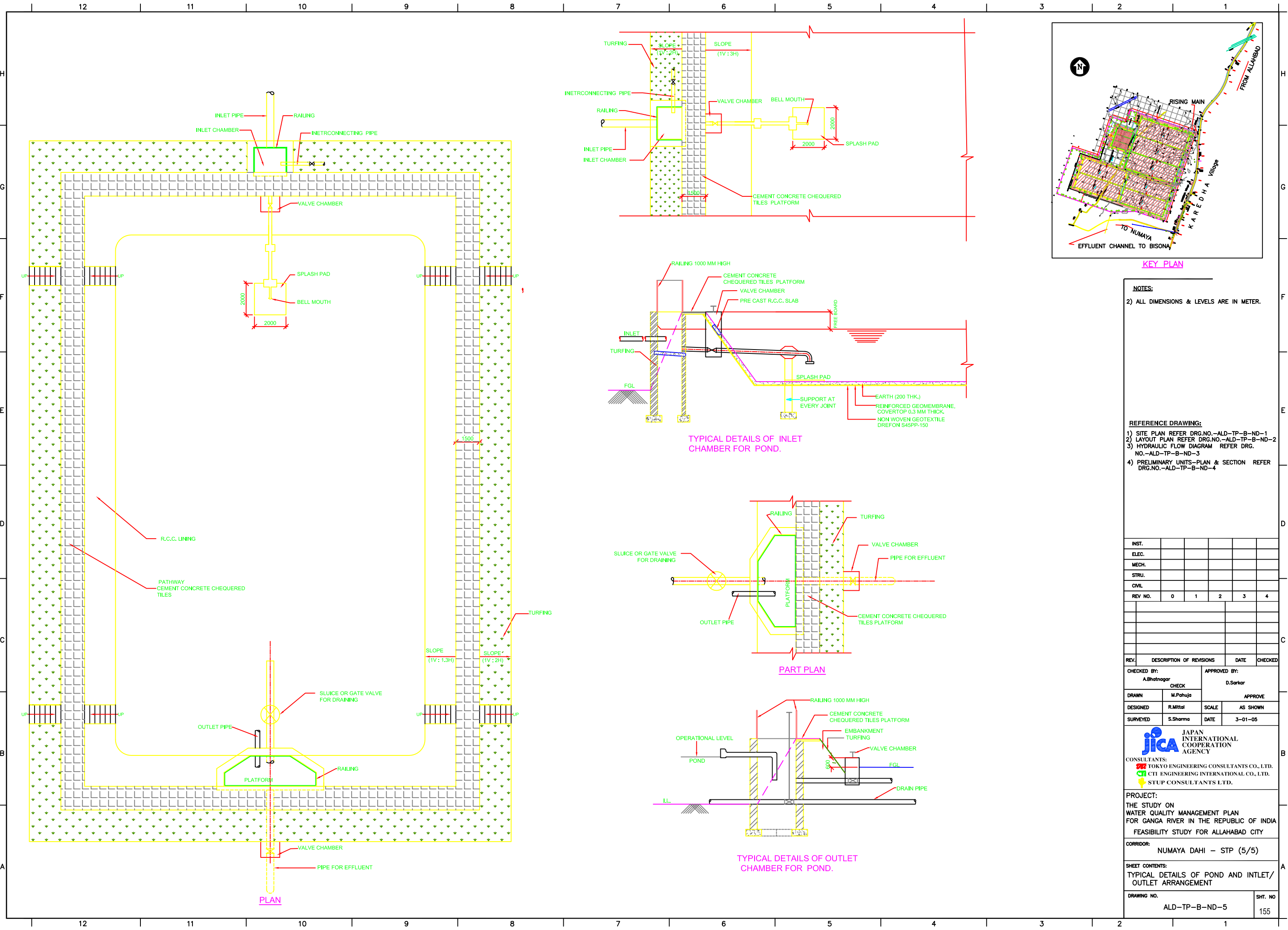
CONSULTANTS:

PROJECT:
 THE STUDY ON WATER QUALITY MANAGEMENT PLAN FOR GANGA RIVER IN THE REPUBLIC OF INDIA
 FEASIBILITY STUDY FOR ALLAHABAD CITY

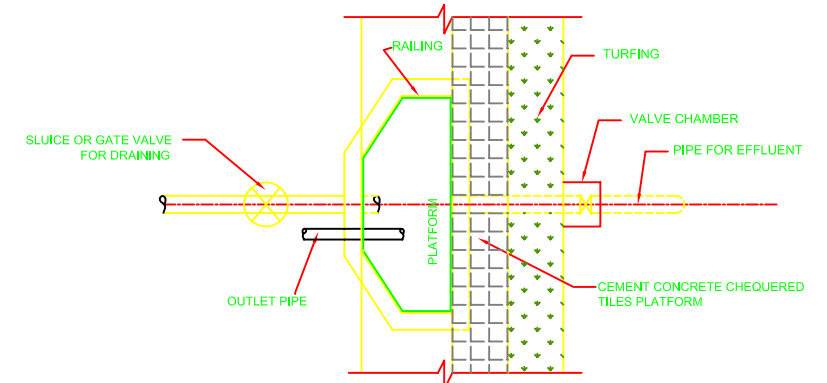
CORRIDOR:
 NUMAYA DAHI - STP (4/5)

SHEET CONTENTS:
 PRELIMINARY UNITS (PLAN AND SECTIONS)

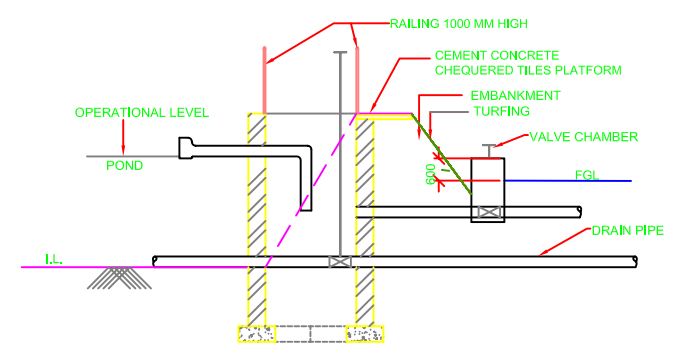
DRAWING NO.	ALD - TP - B - ND - 4	SHT. NO.	154
--------------------	-----------------------	-----------------	-----



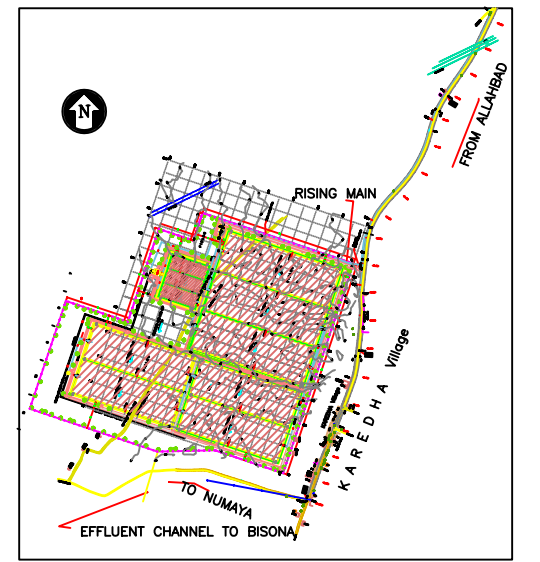
TYPICAL DETAILS OF INLET CHAMBER FOR POND.



PART PLAN



TYPICAL DETAILS OF OUTLET CHAMBER FOR POND.



KEY PLAN

- NOTES:
- 2) ALL DIMENSIONS & LEVELS ARE IN METER.
- REFERENCE DRAWING:
- 1) SITE PLAN REFER DRG.NO.-ALD-TP-B-ND-1
 - 2) LAYOUT PLAN REFER DRG.NO.-ALD-TP-B-ND-2
 - 3) HYDRAULIC FLOW DIAGRAM REFER DRG. NO.-ALD-TP-B-ND-3
 - 4) PRELIMINARY UNITS-PLAN & SECTION REFER DRG.NO.-ALD-TP-B-ND-4

INST.					
ELEC.					
MECH.					
STRU.					
CIVL					
REV. NO.	0	1	2	3	4

REV.	DESCRIPTION OF REVISIONS	DATE	CHECKED
CHECKED BY:	A.Bhatnagar	CHECK	D.Sarkar
DRAWN	M.Pahuja	APPROVE	
DESIGNED	R.Mittal	SCALE	AS SHOWN
SURVEYED	S.Sharma	DATE	3-01-05

JICA JAPAN INTERNATIONAL COOPERATION AGENCY
 CONSULTANTS:
 TOKYO ENGINEERING CONSULTANTS CO., LTD.
 CTI ENGINEERING INTERNATIONAL CO., LTD.
 STUP CONSULTANTS LTD.

PROJECT:
 THE STUDY ON WATER QUALITY MANAGEMENT PLAN FOR GANGA RIVER IN THE REPUBLIC OF INDIA
 FEASIBILITY STUDY FOR ALLAHABAD CITY

CORRIDOR: NUMAYA DAHI - STP (5/5)

SHEET CONTENTS:
 TYPICAL DETAILS OF POND AND INTLET/OUTLET ARRANGEMENT

DRAWING NO. ALD-TP-B-ND-5 SHT. NO. 155