

KEY PLAN

NOTES

ALL DIMENSIONS & LEVELS ARE IN M.

LEGEND

- PROPOSED
- EXISTING FACILITY NEEDING UPGRADATION / MODIFICATION
- EXISTING EQUIPMENT / STRUCTURE NOT REQUIRING ANY CHANGE

REFERENCE DRAWING:

ALD-PS-D-AB-2

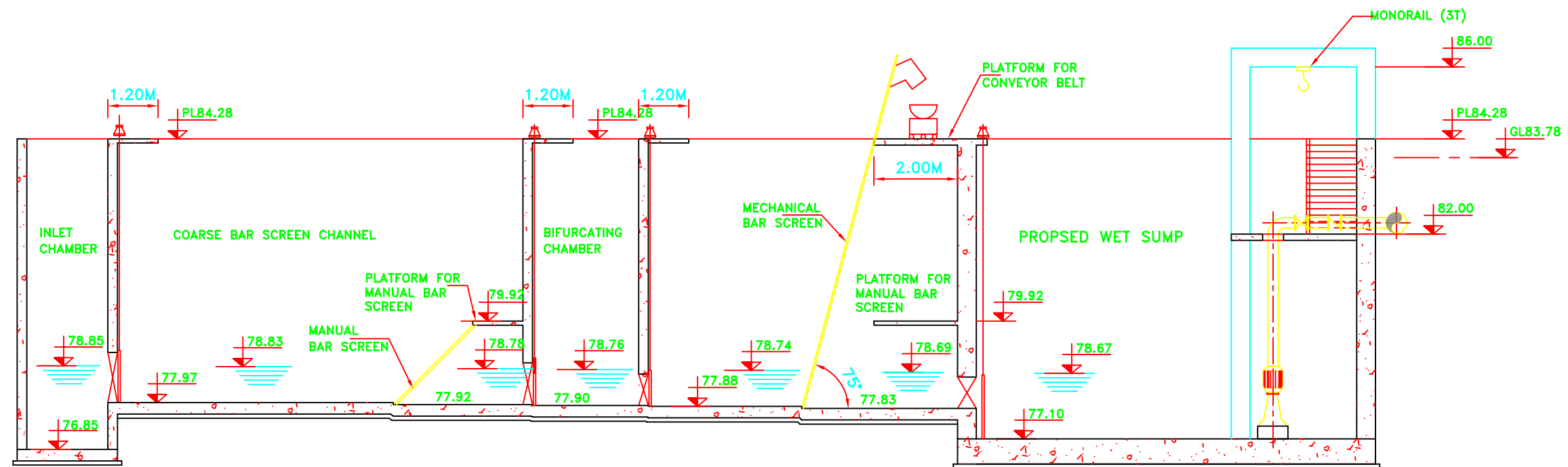
REV. NO.	0	1	2	3	4
INST.					
ELEC.					
MECH.					
STRU.					
CIVIL					

REV.	DESCRIPTION OF REVISIONS	DATE	CHECKED

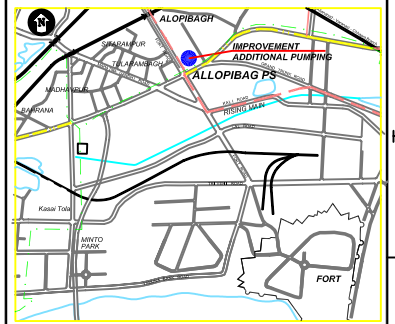
CHECKED BY: D SARKAR
APPROVED BY: AG SIRCAR
DRAWN: SUNITA
DESIGNED: S SEN
SURVEYED: S.Sharma

PROJECT: THE STUDY ON WATER QUALITY MANAGEMENT PLAN FOR GANGA RIVER IN THE REPUBLIC OF INDIA
FEASIBILITY STUDY FOR ALLAHABAD CITY
CORRIDOR: District : D
 ALOPI BAGH PUMPING STATION (1/3)
SHEET CONTENTS: LAYOUT & GENERAL ARRANGEMENT OF EXISTING PUMPING STATION AND PROPOSED AUGMENTATION

DRAWING NO. ALD-PS-D-AB-1
SHT. NO. 129



SECTION 1-1



KEY PLAN

NOTES

ALL DIMENSIONS & LEVELS ARE IN M.

REFERENCE DRAWING:

ALD-PS-D-AB-1

INST.					
ELEC.					
MECH.					
STRU.					
CIVIL					
REV. NO.	0	1	2	3	4

REV.	DESCRIPTION OF REVISIONS	DATE	CHECKED
------	--------------------------	------	---------

CHECKED BY: D SARKAR		APPROVED BY: AG SIRGAR	
DRAWN	SUNITA	APPROVE	
DESIGNED	S SEN	SCALE	N.T.S.
SURVEYED	S.Sharma	DATE	17-12-2004

JICA JAPAN INTERNATIONAL COOPERATION AGENCY

CONSULTANTS:

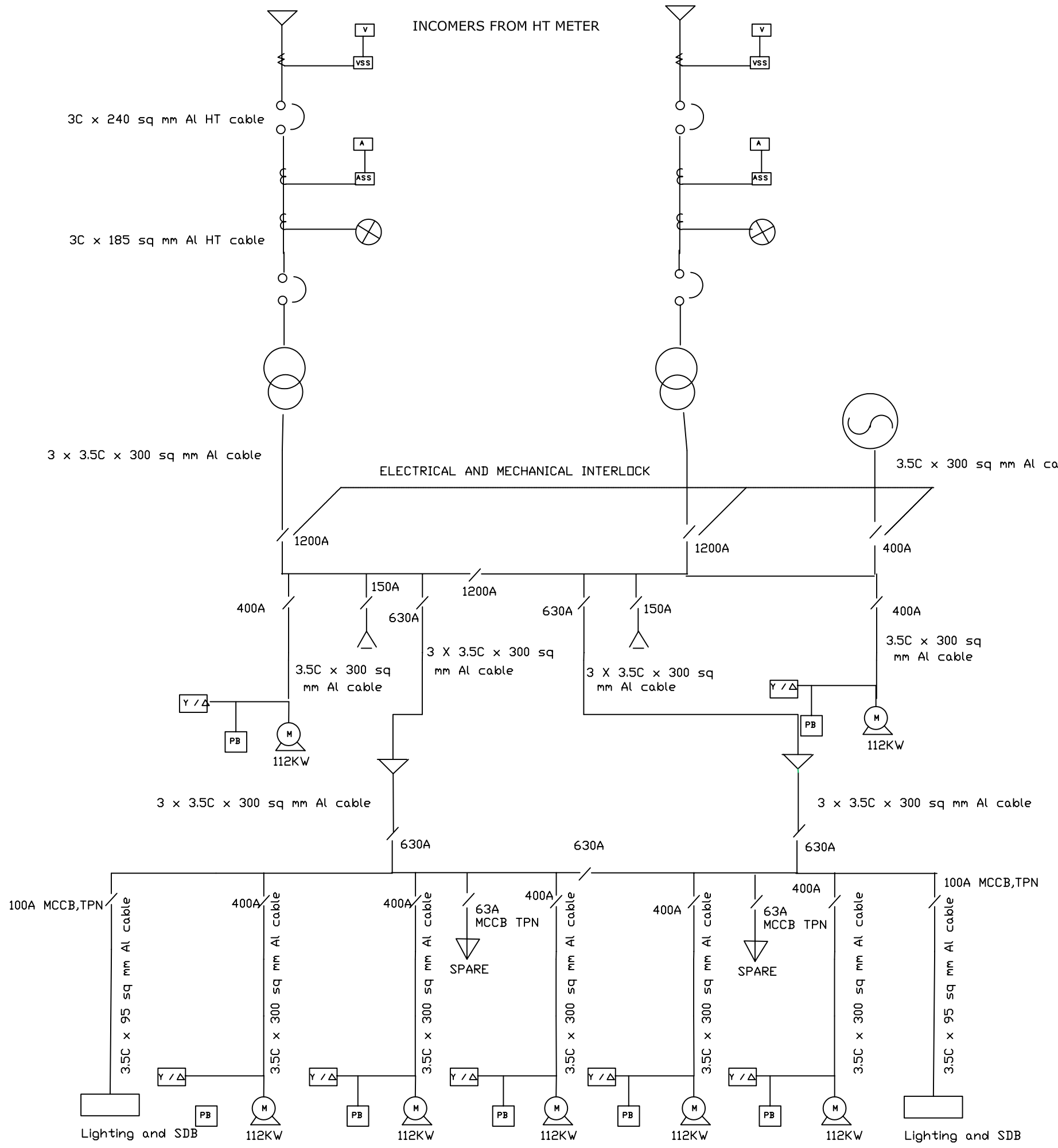
- TOKYO ENGINEERING CONSULTANTS CO., LTD.
- CTI ENGINEERING INTERNATIONAL CO., LTD.
- STUP CONSULTANTS LTD.

PROJECT:
THE STUDY ON WATER QUALITY MANAGEMENT PLAN FOR GANGA RIVER IN THE REPUBLIC OF INDIA
FEASIBILITY STUDY FOR ALLAHABAD CITY

CORRIDOR: District : D
ALOPBAGH PUMPING STATION (2/3)

SHEET CONTENTS:
HYDRAULIC FLOW DIAGRAM

DRAWING NO. ALD-PS-D-AB-2	SHT. NO. 130
-------------------------------------	------------------------



SINGLE LINE DIAGRAM FOR ALOPIBAGH (AUGMENTATION)

- LEGEND**
- Capacitor Bank
 - Protective Relay
 - Ammeter
 - Ammeter Selector Switch
 - Voltmeter
 - Voltmeter Selector Switch
 - Current Transformer
 - Potential Transformer
 - 630A, 250 MVA, 11 KV VCB 18.4 KA
 - 630KVA, 11KV/415V Transformer DY-11
 - DG set 160 KVA, 3Ph 415 V, 50 HZ
 - TEFC Squirrel Cage Motor 415 V, 3 PH, 50 HZ
 - Star Delta Motor Starter
 - ACB
 - Remote Push Button

NOTES
 ONE PUMP OF 112 KW CAN BE RUN ON DG SET

INST.					
ELEC.					
MECH.					
STRU.					
CIVIL					
REV. NO.	0	1	2	3	4

REV.	DESCRIPTION OF REVISIONS	DATE	CHECKED

JICA JAPAN INTERNATIONAL COOPERATION AGENCY

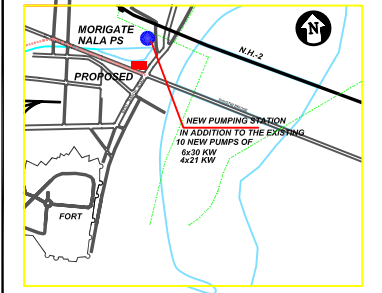
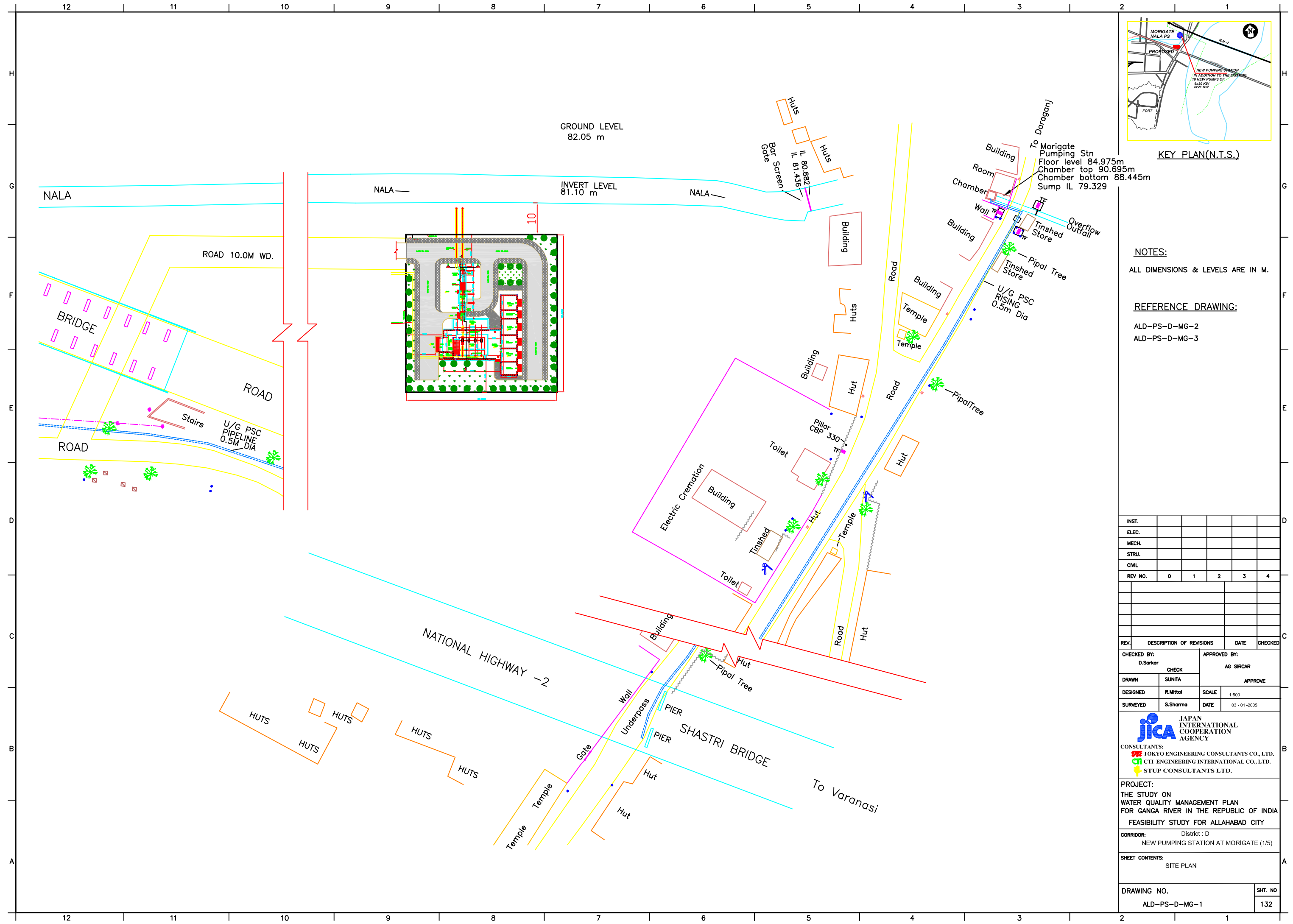
CONSULTANTS:
 TOKYO ENGINEERING CONSULTANTS CO., LTD.
 CTI ENGINEERING INTERNATIONAL CO., LTD.
 STUP CONSULTANTS LTD.

PROJECT:
 THE STUDY ON WATER QUALITY MANAGEMENT PLAN FOR GANGA RIVER IN THE REPUBLIC OF INDIA
 FEASIBILITY STUDY FOR ALLAHABAD CITY

CORRIDOR: District - D

SHEET CONTENTS:
SINGLE LINE DIAGRAM
 ALOPIBAGH PUMPING STATION (3/3)
 EXISTING

DRAWING NO.	SHT. NO.
ALD-PS-D-AB-3	131



KEY PLAN (N.T.S.)

NOTES:

ALL DIMENSIONS & LEVELS ARE IN M.

REFERENCE DRAWING:

- ALD-PS-D-MG-2
- ALD-PS-D-MG-3

INST.					
ELEC.					
MECH.					
STRU.					
CIVIL					
REV NO.	0	1	2	3	4

REV.	DESCRIPTION OF REVISIONS	DATE	CHECKED

CHECKED BY: D.Sarkar		APPROVED BY: AG SIRCAR	
DRAWN SUNITA	CHECK	APPROVE	
DESIGNED R.Mittal	SCALE 1:500	DATE 03-01-2005	
SURVEYED S.Sharma	DATE		

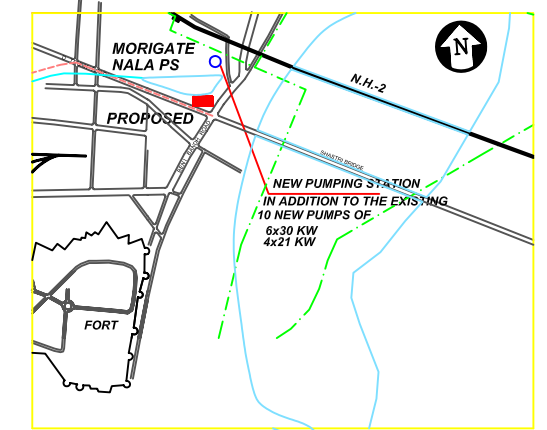
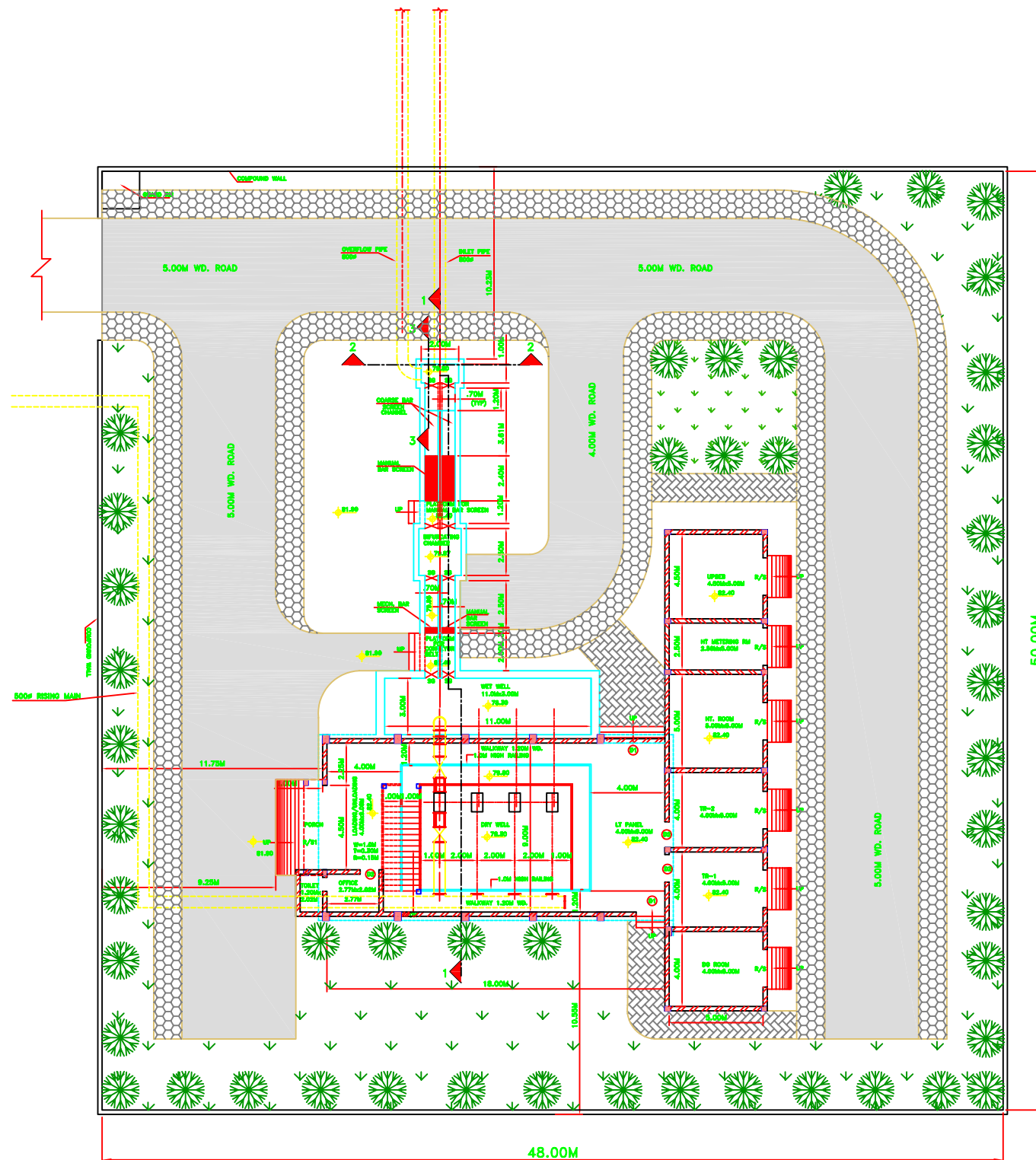
JICA JAPAN INTERNATIONAL COOPERATION AGENCY
 CONSULTANTS:
 TOKYO ENGINEERING CONSULTANTS CO., LTD.
 CTI ENGINEERING INTERNATIONAL CO., LTD.
 STUP CONSULTANTS LTD.

PROJECT:
 THE STUDY ON WATER QUALITY MANAGEMENT PLAN FOR GANGA RIVER IN THE REPUBLIC OF INDIA
 FEASIBILITY STUDY FOR ALLAHABAD CITY

CORRIDOR: District : D
 NEW PUMPING STATION AT MORIGATE (1/5)

SHEET CONTENTS:
 SITE PLAN

DRAWING NO. ALD-PS-D-MG-1	SHT. NO. 132
------------------------------	-----------------



KEY PLAN(N.T.S.)

NOTES
ALL DIMENSIONS & LEVELS ARE IN M.

REFERENCE DRAWING:
ALD-PS-D-MG-1
ALD-PS-D-MG-3

INST.					
ELEC.					
MECH.					
STRU.					
CIVIL					
REV. NO.	0	1	2	3	4

REV.	DESCRIPTION OF REVISIONS	DATE	CHECKED

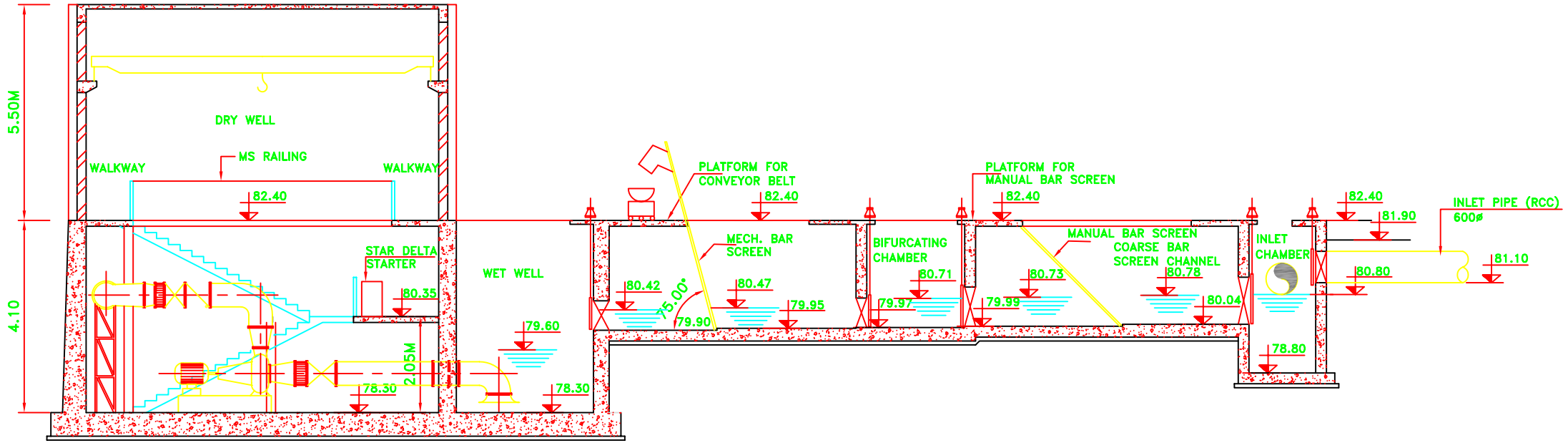
CHECKED BY: D SARKAR		APPROVED BY: AG SIRCAR	
DRAWN SUNITA	CHECK	APPROVE	
DESIGNED S SEM	SCALE N.T.S.	DATE 02 - 01 - 2019	
SURVEYED S.Sharma	DATE		

JICA JAPAN INTERNATIONAL COOPERATION AGENCY
CONSULTANTS:
 TOKYO ENGINEERING CONSULTANTS CO., LTD.
 CTI ENGINEERING INTERNATIONAL CO., LTD.
 STUP CONSULTANTS LTD.

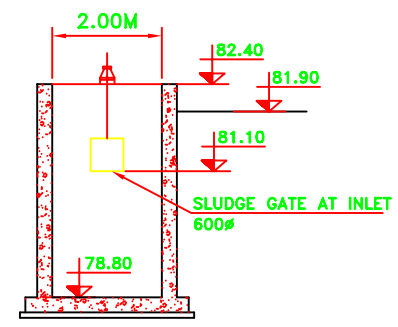
PROJECT:
THE STUDY ON WATER QUALITY MANAGEMENT PLAN FOR GANGA RIVER IN THE REPUBLIC OF INDIA
FEASIBILITY STUDY FOR ALLAHABAD CITY
CORRIDOR: District : D
NEW PUMPING STATION AT MORIGATE (2/5)

SHEET CONTENTS:
LAYOUT & GENERAL ARRANGEMENT

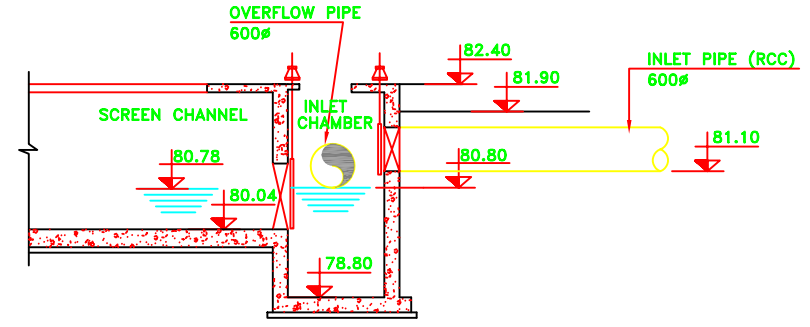
DRAWING NO. ALD-PS-D-MG-2	SHT. NO. 133
------------------------------	-----------------



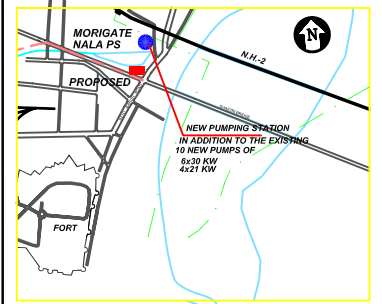
SECTION 1-1



SECTION 2-2



SECTION 3-3



KEY PLAN (N.T.S.)

NOTES

ALL DIMENSIONS & LEVELS ARE IN M.

REFERENCE DRAWING:

- ALD-PS-D-MG-1
- ALD-PS-D-MG-2

INST.					
ELEC.					
MECH.					
STRU.					
CIVIL					
REV NO.	0	1	2	3	4

REV.	DESCRIPTION OF REVISIONS	DATE	CHECKED

CHECKED BY: D SARKAR		APPROVED BY: AG SIRCAR	
DESIGNED S SEM	CHECK SUNITA	SCALE 1:100	APPROVE
SURVEYED S.Sharma	DATE 17-12-2004		

JICA JAPAN INTERNATIONAL COOPERATION AGENCY
 CONSULTANTS:
 TOKYO ENGINEERING CONSULTANTS CO., LTD.
 CTI ENGINEERING INTERNATIONAL CO., LTD.
 STUP CONSULTANTS LTD.

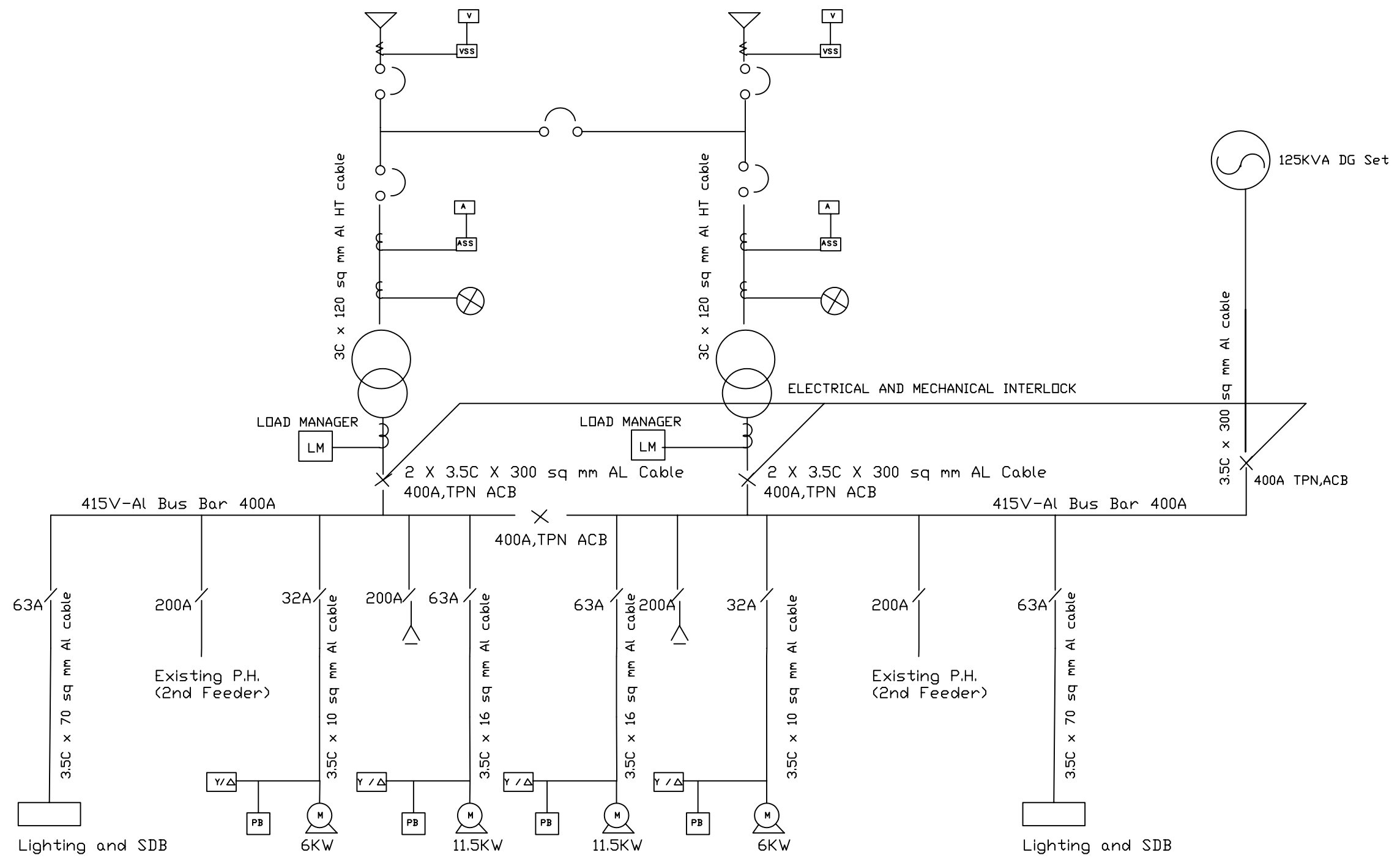
PROJECT:
 THE STUDY ON WATER QUALITY MANAGEMENT PLAN FOR GANGA RIVER IN THE REPUBLIC OF INDIA
 FEASIBILITY STUDY FOR ALLAHABAD CITY

CORRIDOR: District : D
 NEW PUMPING STATION AT MORIGATE (3/5)

SHEET CONTENTS:
 HYDRAULIC FLOW DIAGRAM

DRAWING NO. ALD-PS-D-MG-3	SHT. NO. 134
------------------------------	-----------------

INCOMERS FROM HT METER



SINGLE LINE DIAGRAM FOR MORIGATE SPS (NEW)

- LEGEND**
- △ Capacitor Bank
 - ⊗ Protective Relay
 - A Ammeter
 - ASS Ammeter Selector Switch
 - V Voltmeter
 - VSS Voltmeter Selector Switch
 - ⊂ Current Transformer
 - ⊃ Potential Transformer
 - ⊙ 630A, 250 MVA, 11 KV VCB 18.4 KA
 - ⊕ 250KVA, 11KV/415V Transformer DY-11
 - ⊕ DG set 125 KVA, 3Ph 415 V
 - M TEFC Squirrel Cage Motor 3PH, 415 V, 50 HZ.
 - Y/Δ Star Delta Motor Starter
 - / TPN, MCCB
 - PB Remote Push Button

NOTES

INST.					
ELEC.					
MECH.					
STRU.					
CIVIL					
REV. NO.	0	1	2	3	4

REV.	DESCRIPTION OF REVISIONS	DATE	CHECKED

CHECKED BY:	RKA	CHECK	APPROVED BY:	D.Sarkar
DRAWN	S.Mitra	SCALE	APPROVE	
DESIGNED	S.Sen	SCALE		
SURVEYED		DATE		

JICA JAPAN INTERNATIONAL COOPERATION AGENCY

CONSULTANTS:

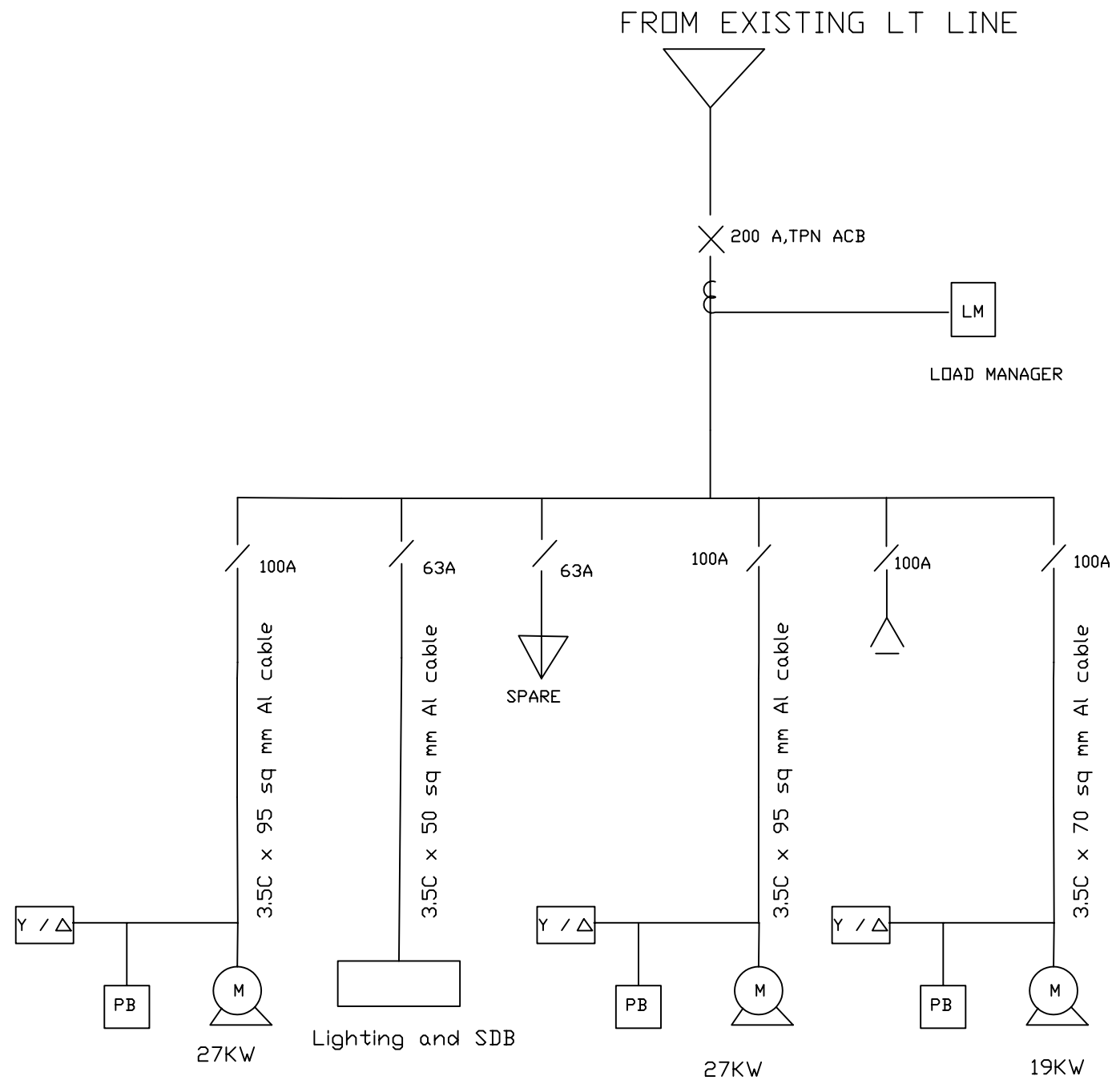
- TE TOKYO ENGINEERING CONSULTANTS CO., LTD.
- CTI CTI ENGINEERING INTERNATIONAL CO., LTD.
- STUP STUP CONSULTANTS LTD.

PROJECT:
THE STUDY ON WATER QUALITY MANAGEMENT PLAN FOR GANGA RIVER IN THE REPUBLIC OF INDIA
FEASIBILITY STUDY FOR ALLAHABAD CITY

CORRIDOR: District - D
NEW PUMPING STATION AT MORIGATE (4/5)

SHEET CONTENTS:
SINGLE LINE DIAGRAM

DRAWING NO.	ALD-PS-D-MG-4	SHT. NO.	135
-------------	---------------	----------	-----



SINGLE LINE DIAGRAM FOR MORIGATE EXISTING PUMP HOUSE

- LEGEND**
- Capacitor Bank
 - Protective Relay
 - Ammeter
 - Ammeter Selector Switch
 - Voltmeter
 - Voltmeter Selector Switch
 - Current Transformer
 - Potential Transformer
 - 630A, 250 MVA, 11 KV VCB
18.4 KA
 - 3150KVA, 11KV/415V Transformer
DY-11
 - DG set 315 KVA, 3Ph, 415 V
 - TEFC Squirrel Cage Motor
415 V, 3 PH, 50 HZ
 - Star Delta Motor Starter
 - TPN MCCB
 - Remote Push Button

NOTES

INST.					
ELEC.					
MECH.					
STRU.					
CIVIL					
REV. NO.	0	1	2	3	4

REV.	DESCRIPTION OF REVISIONS	DATE	CHECKED

JICA JAPAN INTERNATIONAL COOPERATION AGENCY

CONSULTANTS:

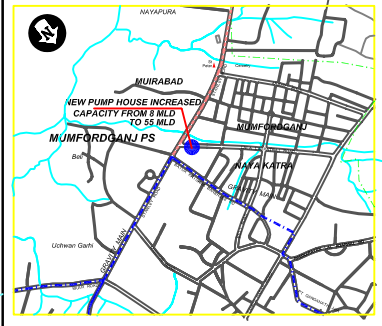
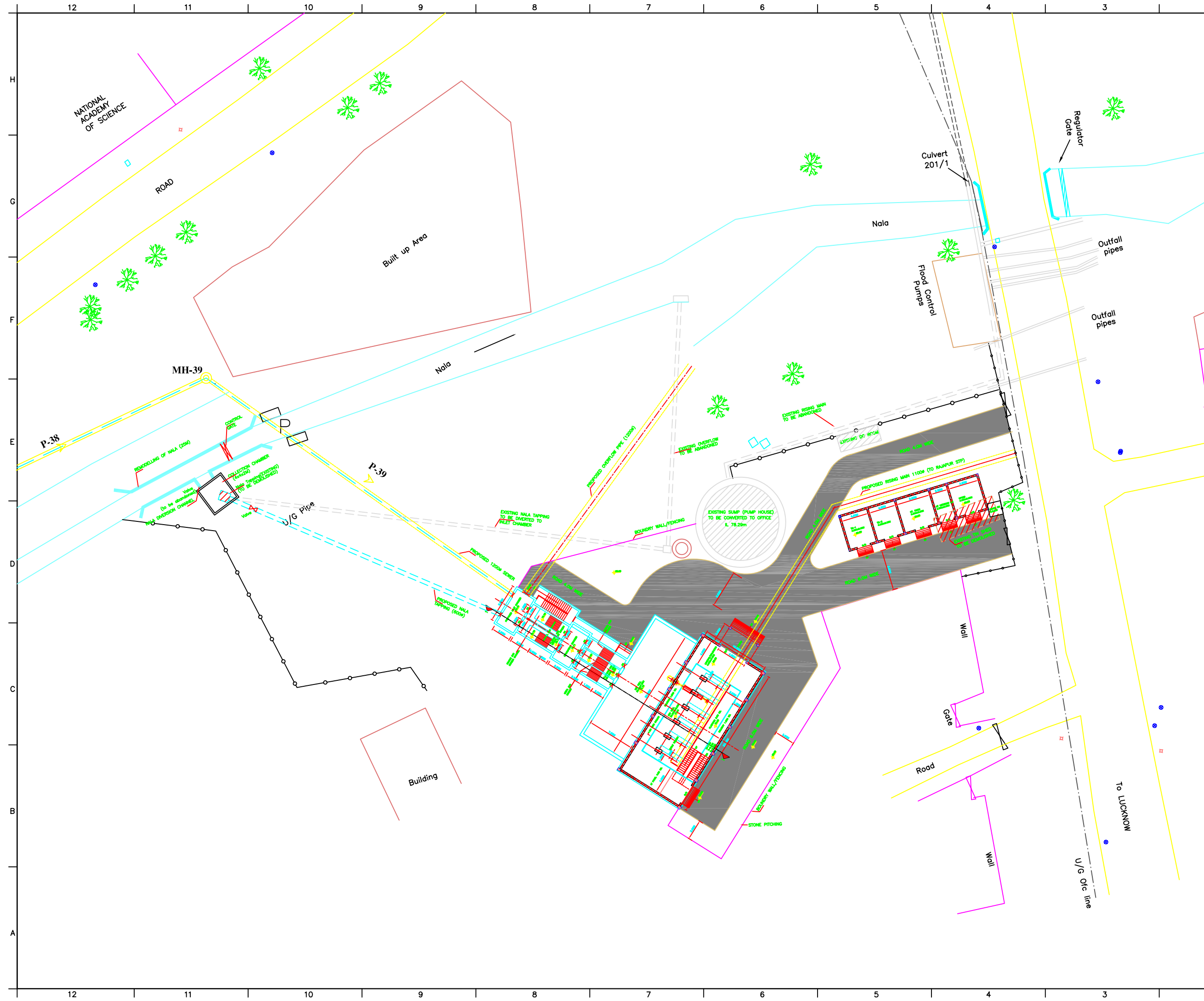
- TOKYO ENGINEERING CONSULTANTS CO., LTD.
- CTI ENGINEERING INTERNATIONAL CO., LTD.
- STUP CONSULTANTS LTD.

PROJECT:
THE STUDY ON WATER QUALITY MANAGEMENT PLAN FOR GANGA RIVER IN THE REPUBLIC OF INDIA
FEASIBILITY STUDY FOR ALLAHABAD CITY

CORRIDOR: District - D

SHEET CONTENTS:
SINGLE LINE DIAGRAM
EXISTING PUMPING STATION AT MORIGATE (5/5)

DRAWING NO.	ALD-PS-D-MG-5	SHT. NO.	136
-------------	---------------	----------	-----



KEY PLAN

NOTES
ALL DIMENSIONS & LEVELS ARE IN M.

LEGEND
 PROPOSED ROAD [Symbol]
 EXISTING BUILDING [Symbol]
 PROPOSED BUILDING [Symbol]

REFERENCE DRAWING:
 ALD-PS-D-MFG-2
 ALD-PS-D-MFG-3

INST.					
ELEC.					
MECH.					
STRU.					
CIVIL					
REV NO.	0	1	2	3	4

REV.	DESCRIPTION OF REVISIONS	DATE	CHECKED

CHECKED BY: D.Sarkar
APPROVED BY: AG SIRCAR

DRAWN: SUNITA
SCALE: 1:250

DESIGNED: R.Mittal
DATE: 05-01-2005

SURVEYED: S.Sharma

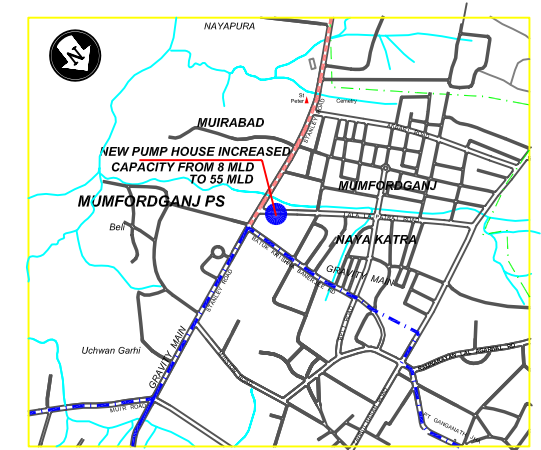
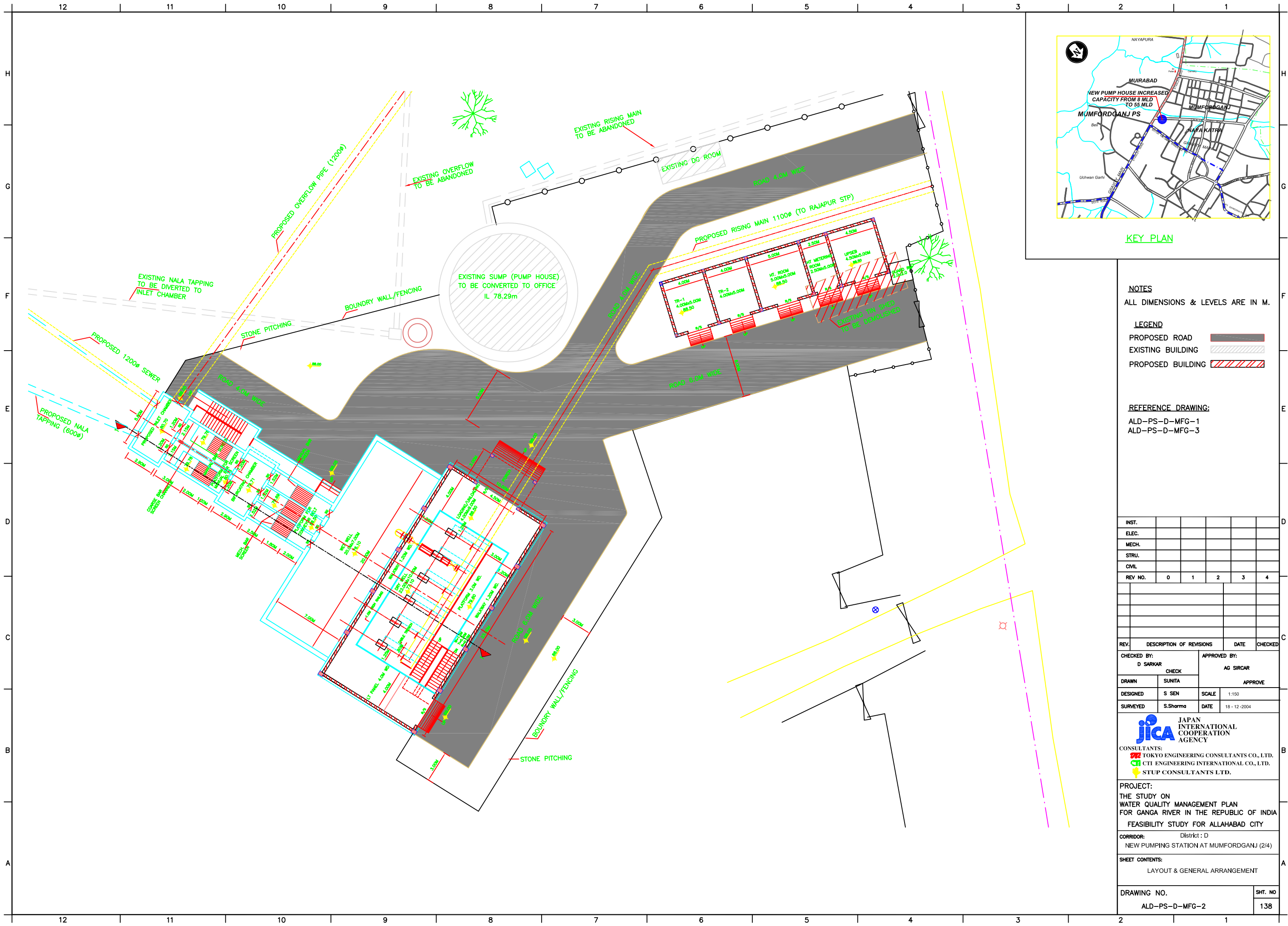
JICA JAPAN INTERNATIONAL COOPERATION AGENCY
CONSULTANTS:
 TOKYO ENGINEERING CONSULTANTS CO., LTD.
 CTI ENGINEERING INTERNATIONAL CO., LTD.
 STUP CONSULTANTS LTD.

PROJECT:
 THE STUDY ON WATER QUALITY MANAGEMENT PLAN FOR GANGA RIVER IN THE REPUBLIC OF INDIA
 FEASIBILITY STUDY FOR ALLAHABAD CITY

CORRIDOR: District : D
 NEW PUMPING STATION AT MUMFORDGANJ (1/4)

SHEET CONTENTS:
 SITE PLAN

DRAWING NO. ALD-PS-D-MFG-1
SHT. NO. 137



KEY PLAN

NOTES
ALL DIMENSIONS & LEVELS ARE IN M.

LEGEND
 PROPOSED ROAD [Solid Grey Line]
 EXISTING BUILDING [Hatched Area]
 PROPOSED BUILDING [Red Hatched Area]

REFERENCE DRAWING:
 ALD-PS-D-MFG-1
 ALD-PS-D-MFG-3

INST.					
ELEC.					
MECH.					
STRU.					
CIVIL					
REV. NO.	0	1	2	3	4
REV.	DESCRIPTION OF REVISIONS	DATE	CHECKED		

CHECKED BY: D SARKAR		APPROVED BY: AG SIRCAR	
DRAWN SUNITA	CHECK	APPROVE	
DESIGNED S SEN	SCALE 1:150		
SURVEYED S.Sharma	DATE 18-12-2004		

JICA JAPAN INTERNATIONAL COOPERATION AGENCY

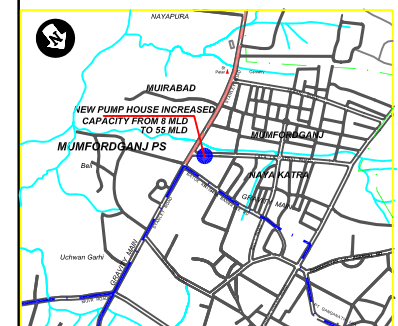
CONSULTANTS:
 TOKYO ENGINEERING CONSULTANTS CO., LTD.
 CTI ENGINEERING INTERNATIONAL CO., LTD.
 STUP CONSULTANTS LTD.

PROJECT:
 THE STUDY ON WATER QUALITY MANAGEMENT PLAN FOR GANGA RIVER IN THE REPUBLIC OF INDIA
 FEASIBILITY STUDY FOR ALLAHABAD CITY

CORRIDOR: District : D
 NEW PUMPING STATION AT MUMFORDGANJ (2/4)

SHEET CONTENTS:
 LAYOUT & GENERAL ARRANGEMENT

DRAWING NO. ALD-PS-D-MFG-2	SHT. NO. 138
-------------------------------	-----------------



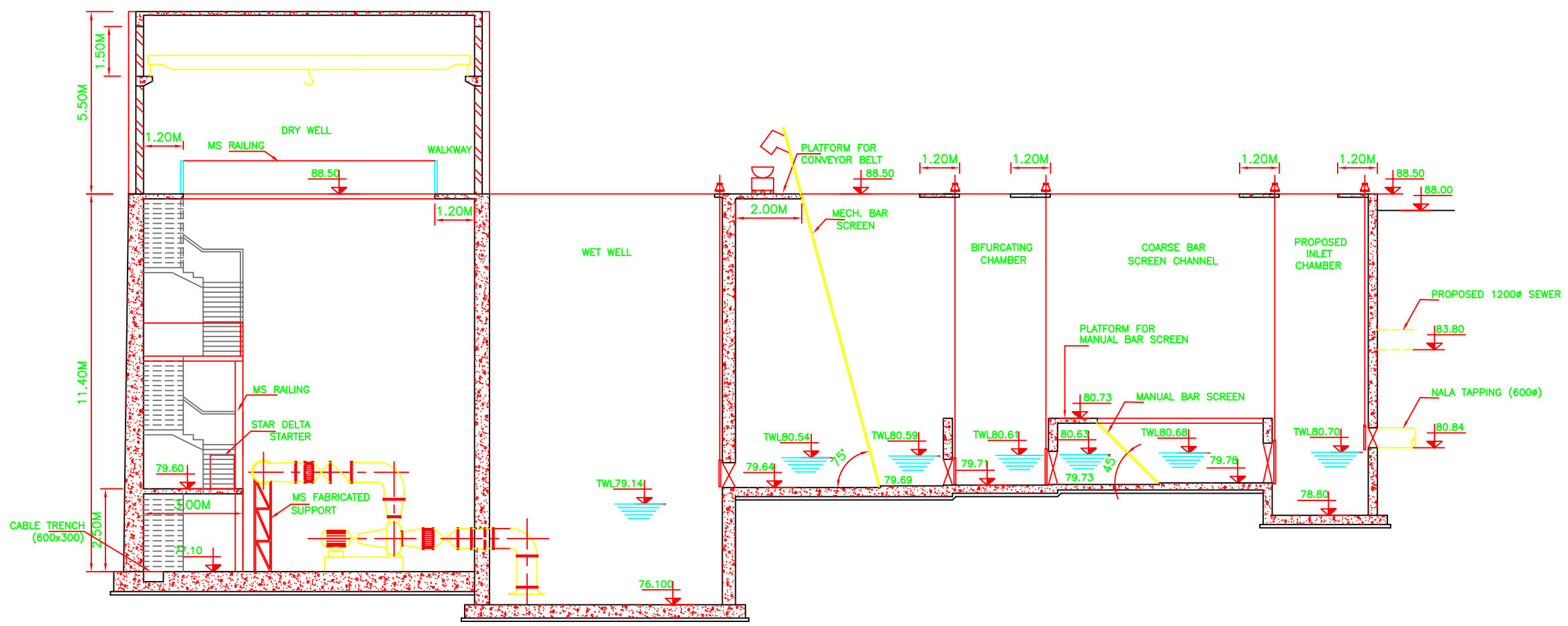
KEY PLAN

NOTES

ALL DIMENSIONS & LEVELS ARE IN M.

REFERENCE DRAWING:

- ALD-PS-D-MFG-1
- ALD-PS-D-MFG-2



INST.					
ELEC.					
MECH.					
STRU.					
CIVIL					
REV. NO.	0	1	2	3	4

REV.	DESCRIPTION OF REVISIONS	DATE	CHECKED

CHECKED BY: D SARKAR		APPROVED BY: AG SARKAR	
DESIGNED	S SEN	SCALE	1:100
SURVEYED	S.Sharma	DATE	18-12-2004

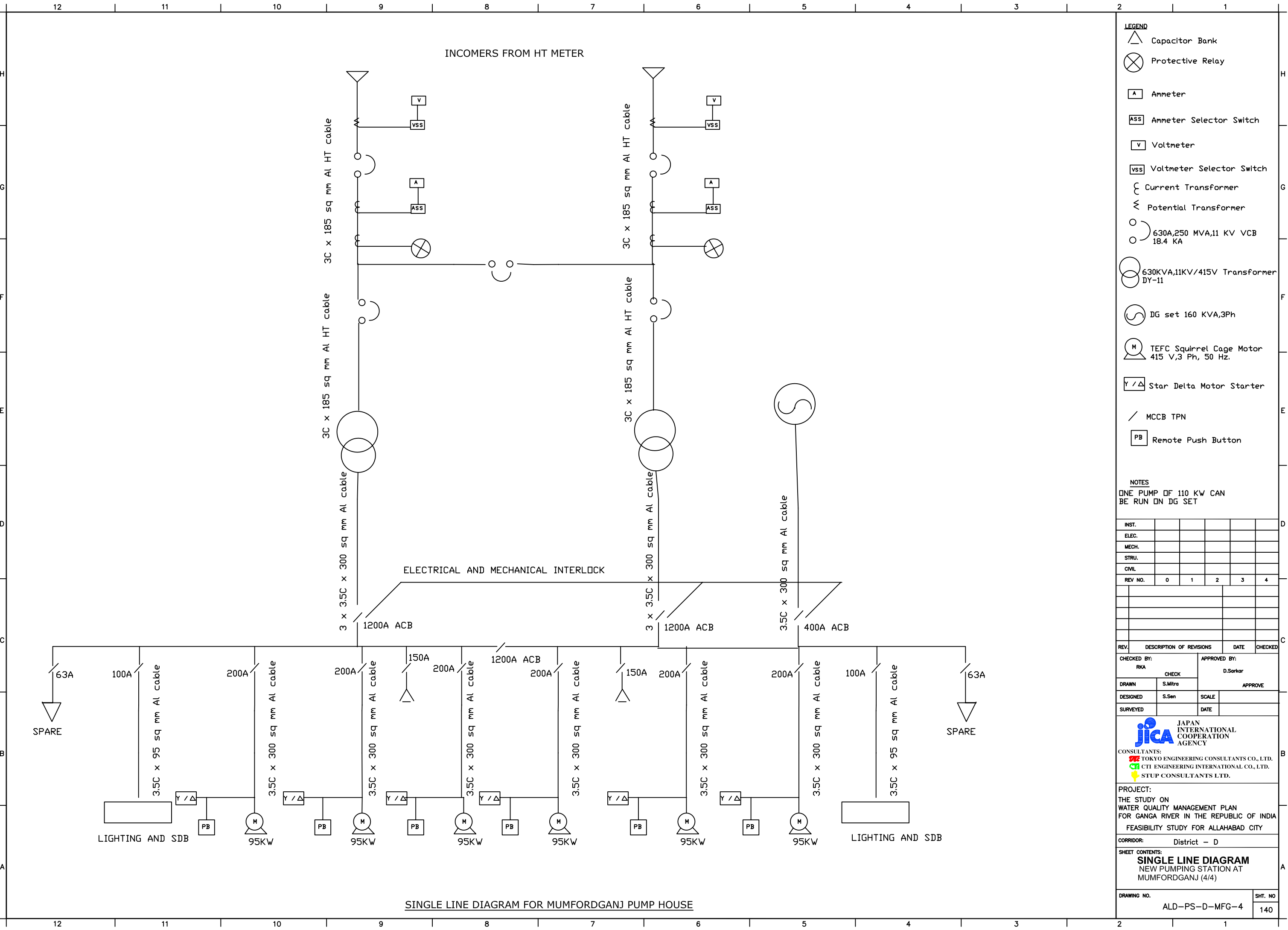
JICA JAPAN INTERNATIONAL COOPERATION AGENCY
 CONSULTANTS:
 TOKYO ENGINEERING CONSULTANTS CO., LTD.
 CTI ENGINEERING INTERNATIONAL CO., LTD.
 STUP CONSULTANTS LTD.

PROJECT:
 THE STUDY ON WATER QUALITY MANAGEMENT PLAN FOR GANGA RIVER IN THE REPUBLIC OF INDIA
 FEASIBILITY STUDY FOR ALLAHABAD CITY

CORRIDOR: District : D
 NEW PUMPING STATION AT MUMFORDGANJ (3/4)

SHEET CONTENTS:
 HYDRAULIC FLOW DIAGRAM

DRAWING NO. ALD-PS-D-MFG-3	SHT. NO. 139
-------------------------------	-----------------



SINGLE LINE DIAGRAM FOR MUMFORDGANJ PUMP HOUSE

- LEGEND**
- Capacitor Bank
 - Protective Relay
 - Ammeter
 - Ammeter Selector Switch
 - Voltmeter
 - Voltmeter Selector Switch
 - Current Transformer
 - Potential Transformer
 - 630A, 250 MVA, 11 KV VCB 18.4 KA
 - 630KVA, 11KV/415V Transformer DY-11
 - DG set 160 KVA, 3Ph
 - TEFC Squirrel Cage Motor 415 V, 3 Ph, 50 Hz.
 - Star Delta Motor Starter
 - MCCB TPN
 - Remote Push Button

NOTES
 ONE PUMP OF 110 KW CAN BE RUN ON DG SET

INST.					
ELEC.					
MECH.					
STRU.					
CIVIL					
REV NO.	0	1	2	3	4

REV.	DESCRIPTION OF REVISIONS	DATE	CHECKED
CHECKED BY:	RKA	APPROVED BY:	D.Sarkar
DRAWN	S.Mitra	SCALE	APPROVE
DESIGNED	S.Sen	DATE	
SURVEYED			

JICA JAPAN INTERNATIONAL COOPERATION AGENCY
 CONSULTANTS:
 TOKYO ENGINEERING CONSULTANTS CO., LTD.
 CTL ENGINEERING INTERNATIONAL CO., LTD.
 STUP CONSULTANTS LTD.

PROJECT:
 THE STUDY ON WATER QUALITY MANAGEMENT PLAN FOR GANGA RIVER IN THE REPUBLIC OF INDIA
 FEASIBILITY STUDY FOR ALLAHABAD CITY

CORRIDOR: District - D

SHEET CONTENTS:
 SINGLE LINE DIAGRAM
 NEW PUMPING STATION AT MUMFORDGANJ (4/4)

DRAWING NO.	SHT. NO.
ALD-PS-D-MFG-4	140