

KEY PLAN (N.T.S.)

NOTES:

1. ALL DIMENSIONS & LEVELS ARE IN METERS

LEGEND:-

1. PROPOSED
2. EXISTING FACILITY NEEDING UPGRADATION / MODIFICATION
3. EXISTING EQUIPMENT / STRUCTURE NOT REQUIRING ANY CHANGE

REFERENCE DRAWING:

REFER DRAWING NO. LUKER GANJ PUMPING STATION (ALD-PS-B-LG-2)

INST.					
ELEC.					
MECH.					
STRU.					
CIVIL					
REV NO.	0	1	2	3	4

REV.	DESCRIPTION OF REVISIONS	DATE	CHECKED
CHECKED BY: D SARKAR			
APPROVED BY: A G SIRCAR			
DRAWN	S.K.BENWAL	SCALE	1:250
DESIGNED	S SEN	DATE	18-01-05
SURVEYED	S.Sharma		

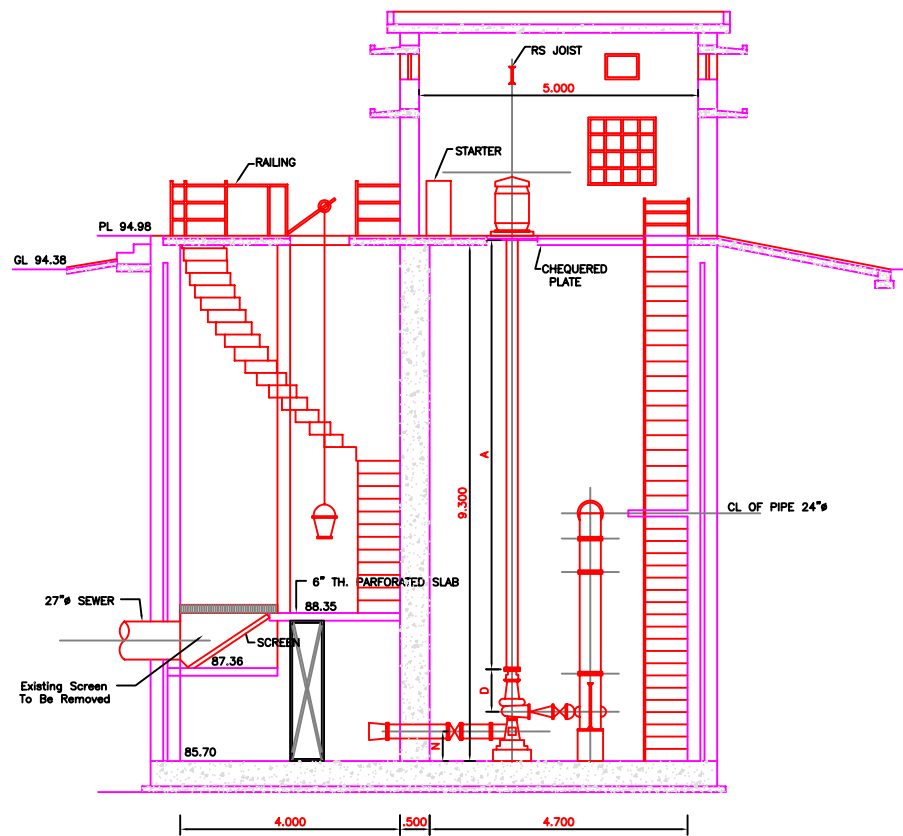
JICA JAPAN INTERNATIONAL COOPERATION AGENCY
CONSULTANTS:
TOKYO ENGINEERING CONSULTANTS CO., LTD.
CTI ENGINEERING INTERNATIONAL CO., LTD.
STUP CONSULTANTS LTD.

PROJECT:
THE STUDY ON
WATER QUALITY MANAGEMENT PLAN
FOR GANGA RIVER IN THE REPUBLIC OF INDIA
FEASIBILITY STUDY FOR ALLAHABAD CITY

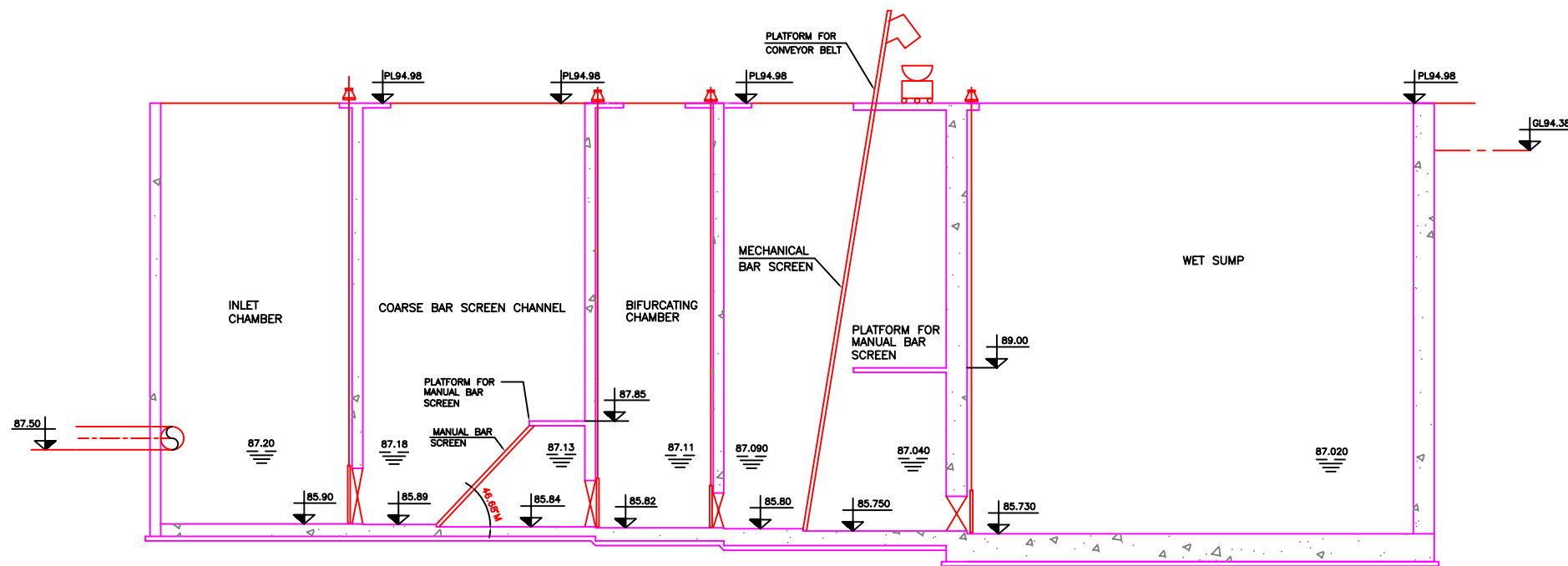
CORRIDOR: District : B
LUKER GANJ PUMPING STATION
(EXISTING) (1/3)

SHEET CONTENTS:
LAYOUT & GENERAL ARRANGEMENT OF
EXISTING PUMPING STATION &
PROPOSED AUGMENTATION

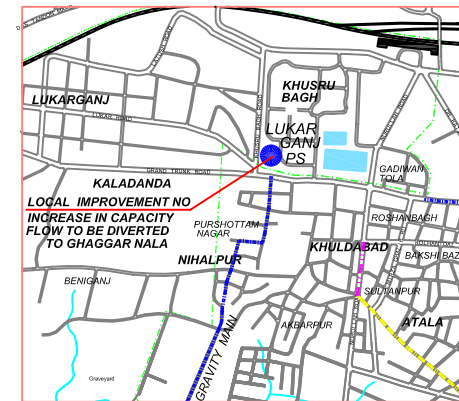
DRAWING NO.	SHT. NO.
ALD-PS-B-LG-1	118



SECTION A-B
(SECTION EXISTING PUMP HOUSE)



SECTION C-D
(HYDRAULIC FLOW DIAGRAM FOR PROPOSED AUGMENTATION)



KEY PLAN (N.T.S.)

NOTES:

1. ALL DIMENSIONS & LEVELS ARE IN METERS

LEGEND:-

1. PROPOSED
2. EXISTING FACILITY NEEDING UPGRADATION / MODIFICATION
3. EXISTING EQUIPMENT / STRUCTURE NOT REQUIRING ANY CHANGE

REFERENCE DRAWING:

REFER DRAWING NO. LUKER GANJ PUMPING STATION (ALD-PS-B-LG-1)

INST.					
ELEC.					
MECH.					
STRU.					
CIVIL					
REV NO.	0	1	2	3	4

REV.	DESCRIPTION OF REVISIONS	DATE	CHECKED
------	--------------------------	------	---------

CHECKED BY: D SARKAR		APPROVED BY: A G SIRCAR	
DRAWN S.K.BENIWAL		APPROVE	
DESIGNED S SEN	SCALE 1:250		
SURVEYED S.Sharma	DATE 18-01-05		

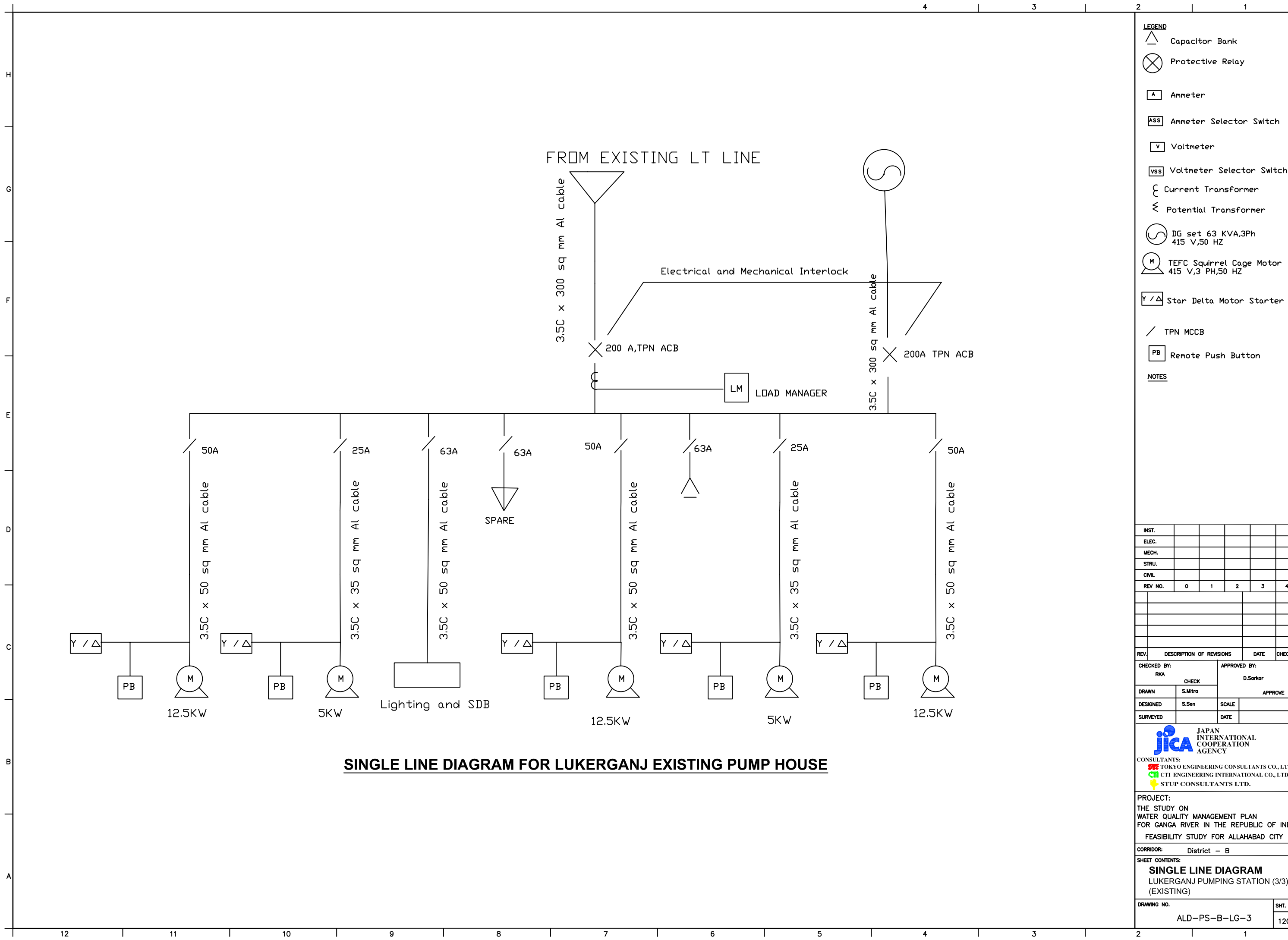
JICA JAPAN INTERNATIONAL COOPERATION AGENCY
CONSULTANTS:
TOKYO ENGINEERING CONSULTANTS CO., LTD.
CTI ENGINEERING INTERNATIONAL CO., LTD.
STUP CONSULTANTS LTD.

PROJECT:
THE STUDY ON WATER QUALITY MANAGEMENT PLAN FOR GANGA RIVER IN THE REPUBLIC OF INDIA
FEASIBILITY STUDY FOR ALLAHABAD CITY

CORRIDOR: District : B
LUKER GANJ PUMPING STATION (EXISTING) (2/3)

SHEET CONTENTS:
HYDRAULIC FLOW DIAGRAM

DRAWING NO. ALD-PS-B-LG-2	SHT. NO. 119
------------------------------	-----------------



SINGLE LINE DIAGRAM FOR LUKERGANJ EXISTING PUMP HOUSE

- LEGEND**
- Capacitor Bank
 - Protective Relay
 - Ammeter
 - Ammeter Selector Switch
 - Voltmeter
 - Voltmeter Selector Switch
 - Current Transformer
 - Potential Transformer
 - DG set 63 KVA,3Ph
415 V,50 HZ
 - TEFC Squirrel Cage Motor
415 V,3 PH,50 HZ
 - Star Delta Motor Starter

- TPN MCCB
- Remote Push Button

NOTES

INST.					
ELEC.					
MECH.					
STRU.					
CIVIL					
REV NO.	0	1	2	3	4

REV.	DESCRIPTION OF REVISIONS	DATE	CHECKED
CHECKED BY:	RKA	APPROVED BY:	D.Sarkar
DRAWN	S.Mitra	CHECK	APPROVE
DESIGNED	S.Sen	SCALE	
SURVEYED		DATE	

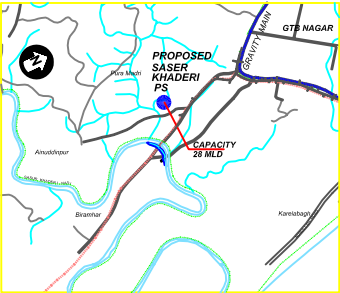
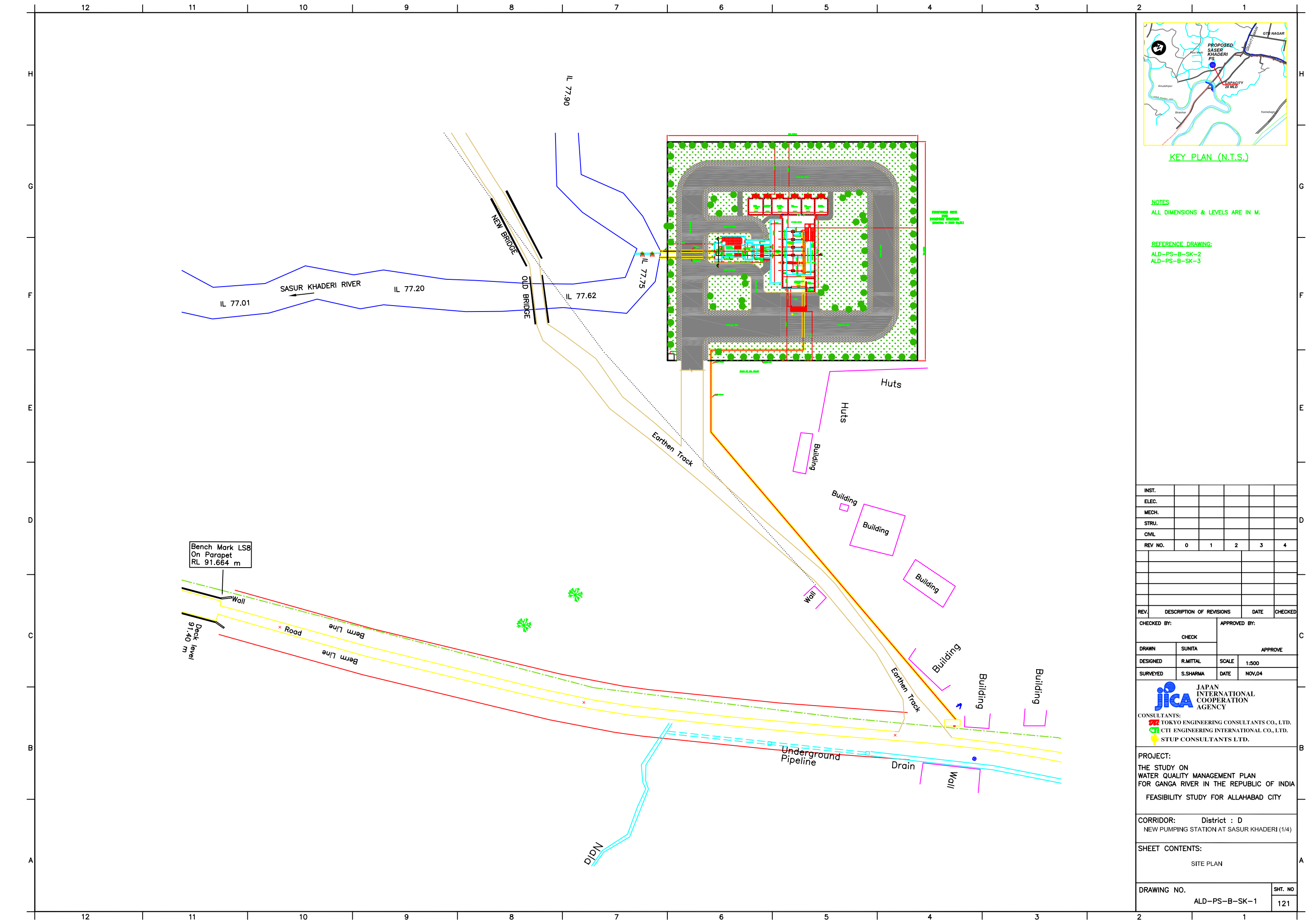
JICA JAPAN INTERNATIONAL COOPERATION AGENCY
CONSULTANTS:
TOKYO ENGINEERING CONSULTANTS CO., LTD.
CTI ENGINEERING INTERNATIONAL CO., LTD.
STUP CONSULTANTS LTD.

PROJECT:
THE STUDY ON
WATER QUALITY MANAGEMENT PLAN
FOR GANGA RIVER IN THE REPUBLIC OF INDIA
FEASIBILITY STUDY FOR ALLAHABAD CITY

CORRIDOR: District – B

SHEET CONTENTS:
SINGLE LINE DIAGRAM
LUKERGANJ PUMPING STATION (3/3)
(EXISTING)

DRAWING NO.	SHT. NO
ALD-PS-B-LG-3	120



KEY PLAN (N.T.S.)

NOTES
ALL DIMENSIONS & LEVELS ARE IN M.

REFERENCE DRAWING:
ALD-PS-B-SK-2
ALD-PS-B-SK-3

INST.					
ELEC.					
MECH.					
STRU.					
CIVIL					
REV NO.	0	1	2	3	4

REV.	DESCRIPTION OF REVISIONS	DATE	CHECKED
------	--------------------------	------	---------

CHECKED BY:		APPROVED BY:	
CHECK		APPROVE	
DRAWN	SUNITA	SCALE	1:500
DESIGNED	R.MITTAL	DATE	NOV,04
SURVEYED	S.SHARMA		

JICA JAPAN INTERNATIONAL COOPERATION AGENCY

CONSULTANTS:

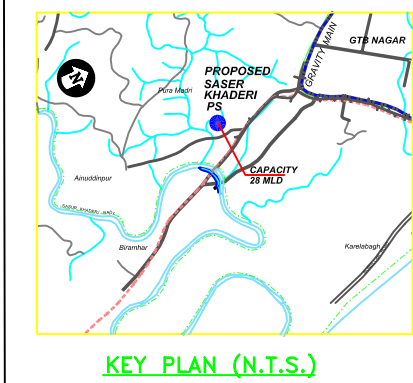
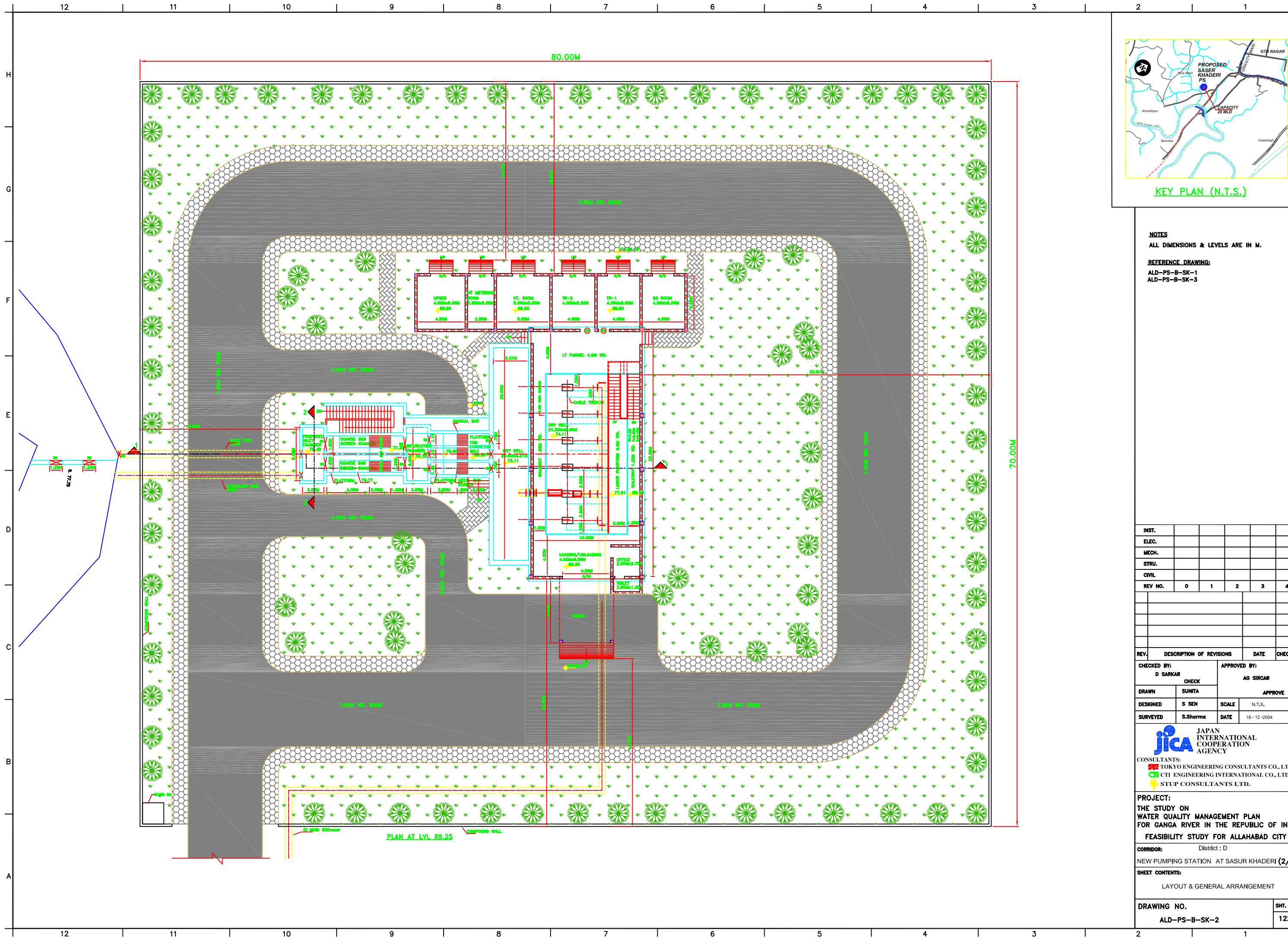
- TOKYO ENGINEERING CONSULTANTS CO., LTD.
- CTI ENGINEERING INTERNATIONAL CO., LTD.
- STUP CONSULTANTS LTD.

PROJECT:
THE STUDY ON
WATER QUALITY MANAGEMENT PLAN
FOR GANGA RIVER IN THE REPUBLIC OF INDIA
FEASIBILITY STUDY FOR ALLAHABAD CITY

CORRIDOR: District : D
NEW PUMPING STATION AT SASUR KHADERI (1/4)





SHEET CONTENTS:
SITE PLAN

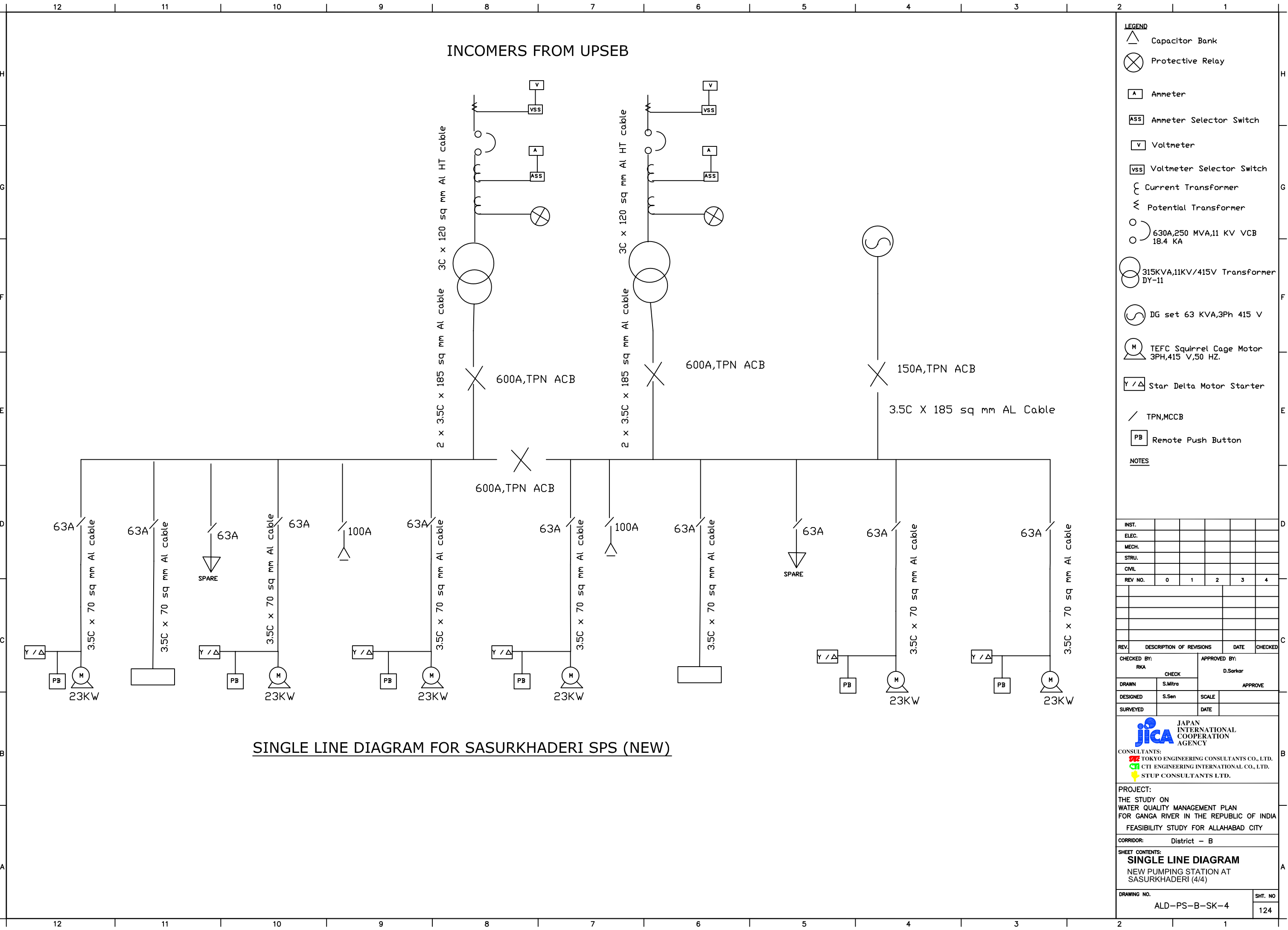
DRAWING NO.	SHT. NO
ALD-PS-B-SK-1	121



NOTES
ALL DIMENSIONS & LEVELS ARE IN M.

REFERENCE DRAWING:
ALD-PS-B-SK-1
ALD-PS-B-SK-3

INST.					
ELEC.					
MECH.					
STRU.					
CIVIL					
REV NO.	0	1	2	3	4
REV.	DESCRIPTION OF REVISIONS			DATE	CHECKED
CHECKED BY: D SARKAR			APPROVED BY:		
CHECK			AG SIRCAR		
DRAWN	SUNITA		APPROVE		
DESIGNED	S SEN		SCALE	N.T.S.	
SURVEYED	S.Sharma		DATE	18 - 12 - 2004	
<div><div>JAPAN INTERNATIONAL COOPERATION AGENCY</div></div> <div>CONSULTANTS: <div> TOKYO ENGINEERING CONSULTANTS CO., LTD.</div><div> CTI ENGINEERING INTERNATIONAL CO., LTD.</div><div> STUP CONSULTANTS LTD.</div></div>					
PROJECT: THE STUDY ON WATER QUALITY MANAGEMENT PLAN FOR GANGA RIVER IN THE REPUBLIC OF INDIA FEASIBILITY STUDY FOR ALLAHABAD CITY					
CORRIDOR: District : D					
NEW PUMPING STATION AT SASUR KHADERI (2/4)					
SHEET CONTENTS: LAYOUT & GENERAL ARRANGEMENT					
DRAWING NO. ALD-PS-B-SK-2				SHT. NO 122	



SINGLE LINE DIAGRAM FOR SASURKHADERI SPS (NEW)

INCOMERS FROM UPSEB

The diagram shows two incoming power lines from UPSB, each consisting of three phases (3C) and a neutral (N). The first incoming line is labeled "3C x 120 sq mm Al HT cable" and the second is labeled "3C x 120 sq mm Al HT cable". Both lines are connected to a common busbar through a 600A TPN ACB. The busbar is also connected to a 150A TPN ACB, which is further connected to a 3.5C X 185 sq mm AL Cable.

LEGEND

- Capacitor Bank
- Protective Relay
- Ammeter
- Ammeter Selector Switch
- Voltmeter
- Voltmeter Selector Switch
- Current Transformer
- Potential Transformer
- 630A,250 MVA,11 KV VCB
- 315KVA,11KV/415V Transformer DY-11
- DG set 63 KVA,3Ph 415 V
- TEFC Squirrel Cage Motor 3PH,415 V,50 HZ.
- Star Delta Motor Starter
- TPN,MCCB
- Remote Push Button

NOTES

INST. ELEC. MECH. STRU. CIVIL
REV NO. 0 1 2 3 4

REVISIONS:

REV.	DESCRIPTION OF REVISIONS	DATE	CHECKED

CHECKED BY: RKA
APPROVED BY: D.Sarkar

DRAWN: S.Mitra
DESIGNED: S.Sen
SURVEYED: DATE

JICA JAPAN INTERNATIONAL COOPERATION AGENCY
CONSULTANTS:
TOKYO ENGINEERING CONSULTANTS CO., LTD.
CTI ENGINEERING INTERNATIONAL CO., LTD.
STUP CONSULTANTS LTD.

PROJECT:
THE STUDY ON WATER QUALITY MANAGEMENT PLAN FOR GANGA RIVER IN THE REPUBLIC OF INDIA
FEASIBILITY STUDY FOR ALLAHABAD CITY

CORRIDOR: District - B

SHEET CONTENTS:
SINGLE LINE DIAGRAM
NEW PUMPING STATION AT SASURKHADERI (4/4)

DRAWING NO. ALD-PS-B-SK-4
SHT. NO. 124

SINGLE LINE DIAGRAM FOR SASURKHADERI SPS (NEW)

The diagram illustrates the electrical system for the New Pumping Station at Sasurkhaderi. It shows the connection from incoming power lines (INCOMERS FROM UPSEB) through various transformers and protective devices to the main distribution busbar. The busbar feeds several feeders, each serving different loads including pumps, motors, and lighting.

Legend:

- Capacitor Bank
- Protective Relay
- Ammeter
- Ammeter Selector Switch
- Voltmeter
- Voltmeter Selector Switch
- Current Transformer
- Potential Transformer
- 630A,250 MVA,11 KV VCB
- 315KVA,11KV/415V Transformer DY-11
- DG set 63 KVA,3Ph 415 V
- TEFC Squirrel Cage Motor 3PH,415 V,50 HZ.
- Star Delta Motor Starter
- TPN,MCCB
- Remote Push Button

Notes:

INST. ELEC. MECH. STRU. CIVL
REV NO. 0 1 2 3 4

REVISIONS:
REV. DESCRIPTION OF REVISIONS DATE CHECKED

CHECKED BY: RKA
APPROVED BY: D.Sarkar

DRAWN: S.Mitra
DESIGNED: S.Sen
SURVEYED: []
SCALE: []
DATE: []

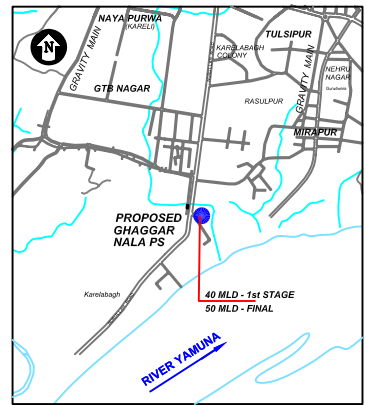
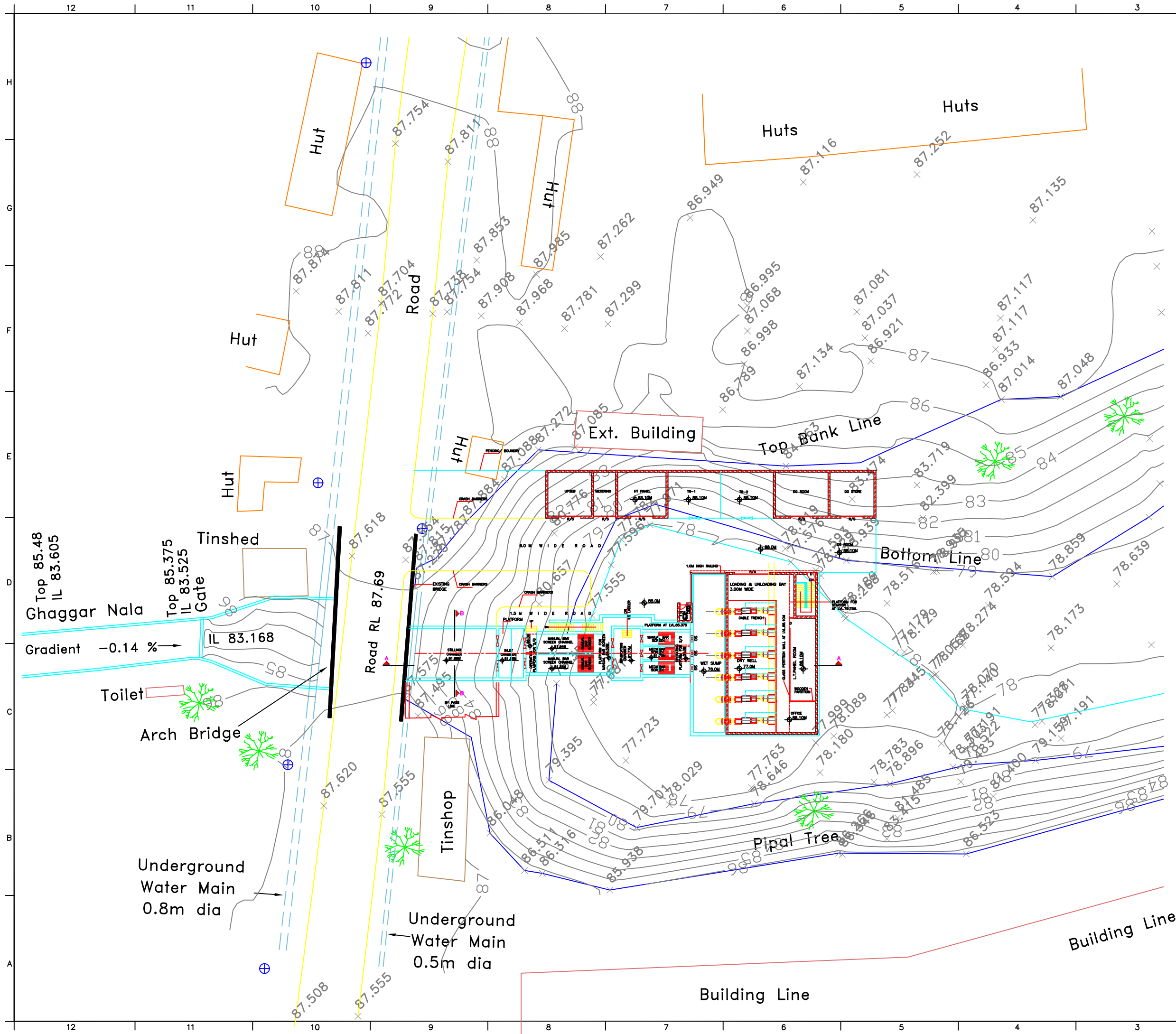
JICA JAPAN INTERNATIONAL COOPERATION AGENCY
CONSULTANTS:
TOKYO ENGINEERING CONSULTANTS CO., LTD.
CTI ENGINEERING INTERNATIONAL CO., LTD.
STUP CONSULTANTS LTD.

PROJECT:
THE STUDY ON WATER QUALITY MANAGEMENT PLAN FOR GANGA RIVER IN THE REPUBLIC OF INDIA
FEASIBILITY STUDY FOR ALLAHABAD CITY

CORRIDOR: District - B

SHEET CONTENTS:
SINGLE LINE DIAGRAM
NEW PUMPING STATION AT SASURKHADERI (4/4)





DRAWING NO. ALD-PS-B-SK-4
SHT. NO. 124

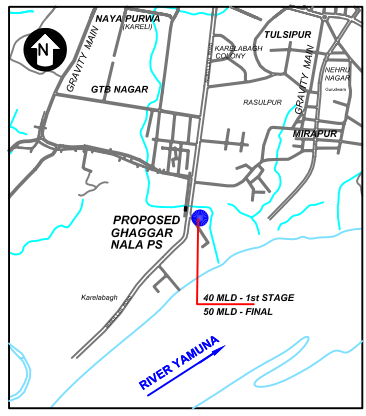
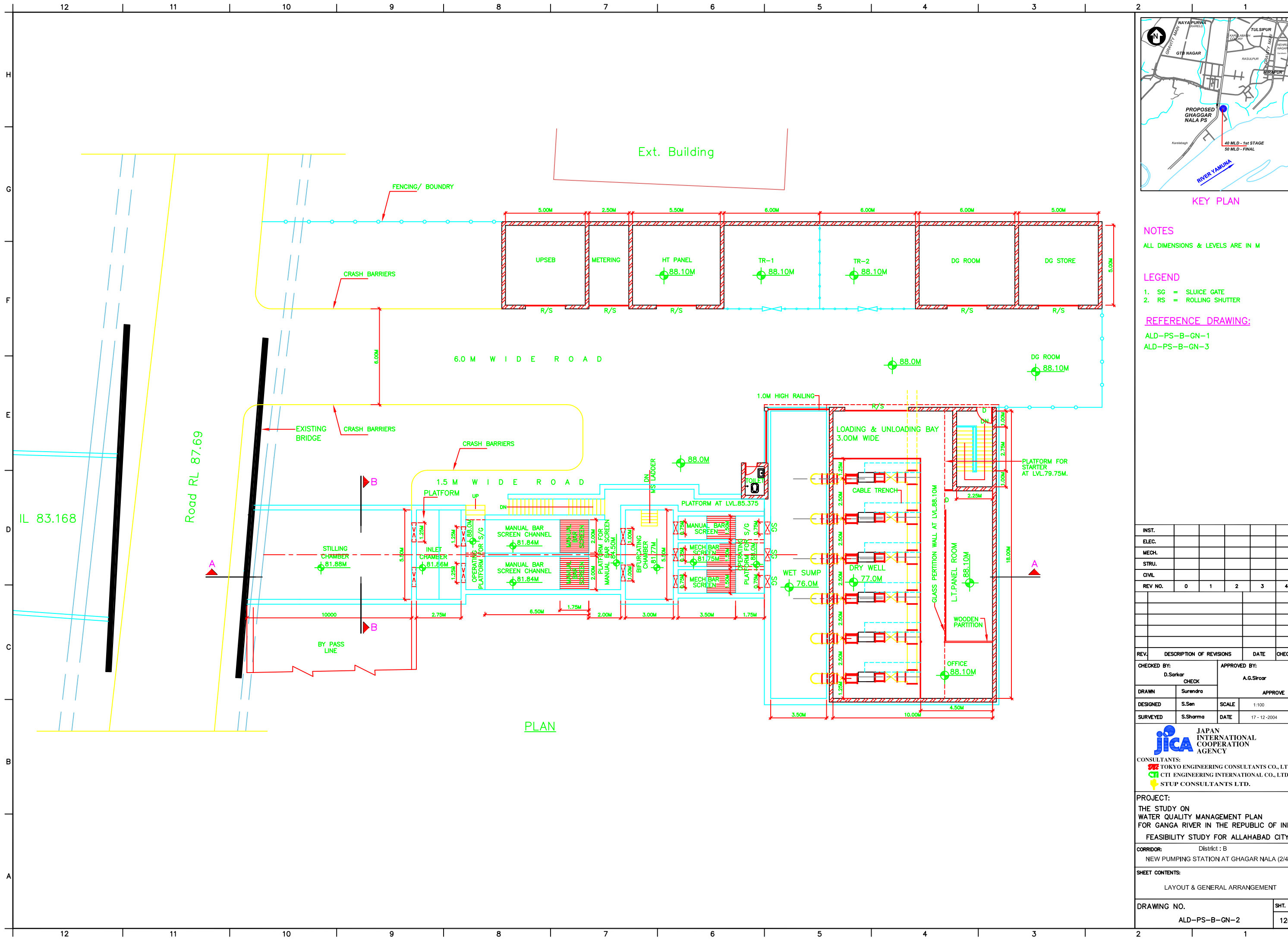


KEY PLAN

NOTES
ALL DIMENSIONS & LEVELS ARE IN M

REFERENCE DRAWING:
ALD-PS-B-GN-2
ALD-PS-B-GN-3

INST.					
ELEC.					
MECH.					
STRU.					
CIVIL					
REV NO.	0	1	2	3	4
REV.	DESCRIPTION OF REVISIONS			DATE	CHECKED
CHECKED BY: D.Sarkar			APPROVED BY:		
CHECK			A.G.Siroor		
DRAWN	Surendra		APPROVE		
DESIGNED	S.Sen		SCALE	1:200	
SURVEYED	S.Sharma		DATE	17 - 12 - 2004	
<div><div><div>JAPAN INTERNATIONAL COOPERATION AGENCY</div></div><div>CONSULTANTS:  TOKYO ENGINEERING CONSULTANTS CO., LTD.  CTI ENGINEERING INTERNATIONAL CO., LTD.  STUP CONSULTANTS LTD.</div></div>					
PROJECT: THE STUDY ON WATER QUALITY MANAGEMENT PLAN FOR GANGA RIVER IN THE REPUBLIC OF INDIA FEASIBILITY STUDY FOR ALLAHABAD CITY					
CORRIDOR: District : B NEW PUMPING STATION AT GHAGGAR NALA (1/4)					
SHEET CONTENTS: SITE PLAN					
DRAWING NO.				SHT. NO	
ALD-PS-B-GN-1				125	



KEY PLAN

NOTES

ALL DIMENSIONS & LEVELS ARE IN M

LEGEND

- 1. SG = SLUICE GATE
- 2. RS = ROLLING SHUTTER

REFERENCE DRAWING:

- ALD-PS-B-GN-1
- ALD-PS-B-GN-3

INST.					
ELEC.					
MECH.					
STRU.					
CIVIL					
REV NO.	0	1	2	3	4

REV.	DESCRIPTION OF REVISIONS	DATE	CHECKED
CHECKED BY:	D.Sarkar	APPROVED BY:	A.G.Sircar
DRAWN	Surendra	APPROVE	
DESIGNED	S.Sen	SCALE	1:100
SURVEYED	S.Sharma	DATE	17-12-2004

JICA JAPAN INTERNATIONAL COOPERATION AGENCY

CONSULTANTS:

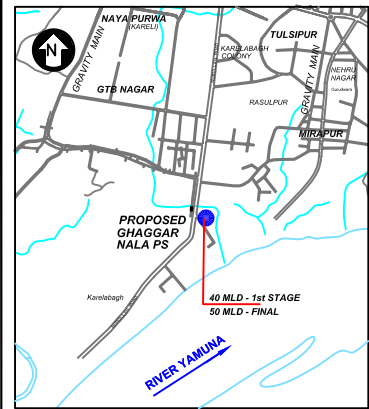
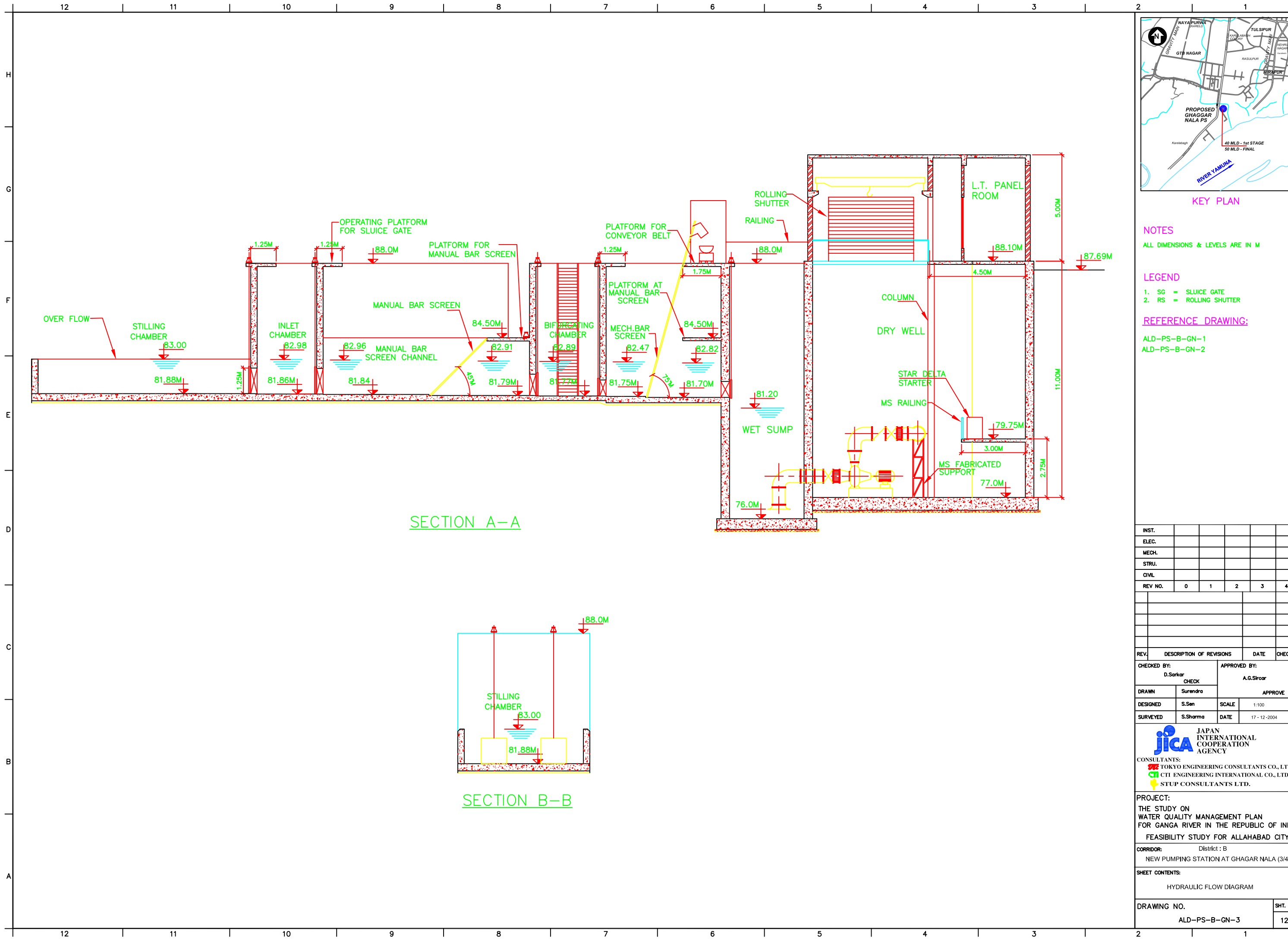
- TOKYO ENGINEERING CONSULTANTS CO., LTD.
- CTI ENGINEERING INTERNATIONAL CO., LTD.
- STUP CONSULTANTS LTD.

PROJECT:
THE STUDY ON
WATER QUALITY MANAGEMENT PLAN
FOR GANGA RIVER IN THE REPUBLIC OF INDIA
FEASIBILITY STUDY FOR ALLAHABAD CITY

CORRIDOR: District : B
NEW PUMPING STATION AT GHAGGAR NALA (2/4)

SHEET CONTENTS:
LAYOUT & GENERAL ARRANGEMENT

DRAWING NO.	SHT. NO.
ALD-PS-B-GN-2	126



NOTES

ALL DIMENSIONS & LEVELS ARE IN M

LEGEND

1. SG = SLUICE GATE
2. RS = ROLLING SHUTTER

REFERENCE DRAWING:

- ALD-PS-B-GN-1
ALD-PS-B-GN-2

INST.					
ELEC.					
MECH.					
STRU.					
CIVIL					
REV NO.	0	1	2	3	4

REV.	DESCRIPTION OF REVISIONS	DATE	CHECKED
CHECKED BY:	D.Sarkar	APPROVED BY:	A.G.Sircar
DRAWN	Surendra	SCALE	1:100
DESIGNED	S.Sen	DATE	17-12-2004
SURVEYED	S.Sharma	DATE	17-12-2004

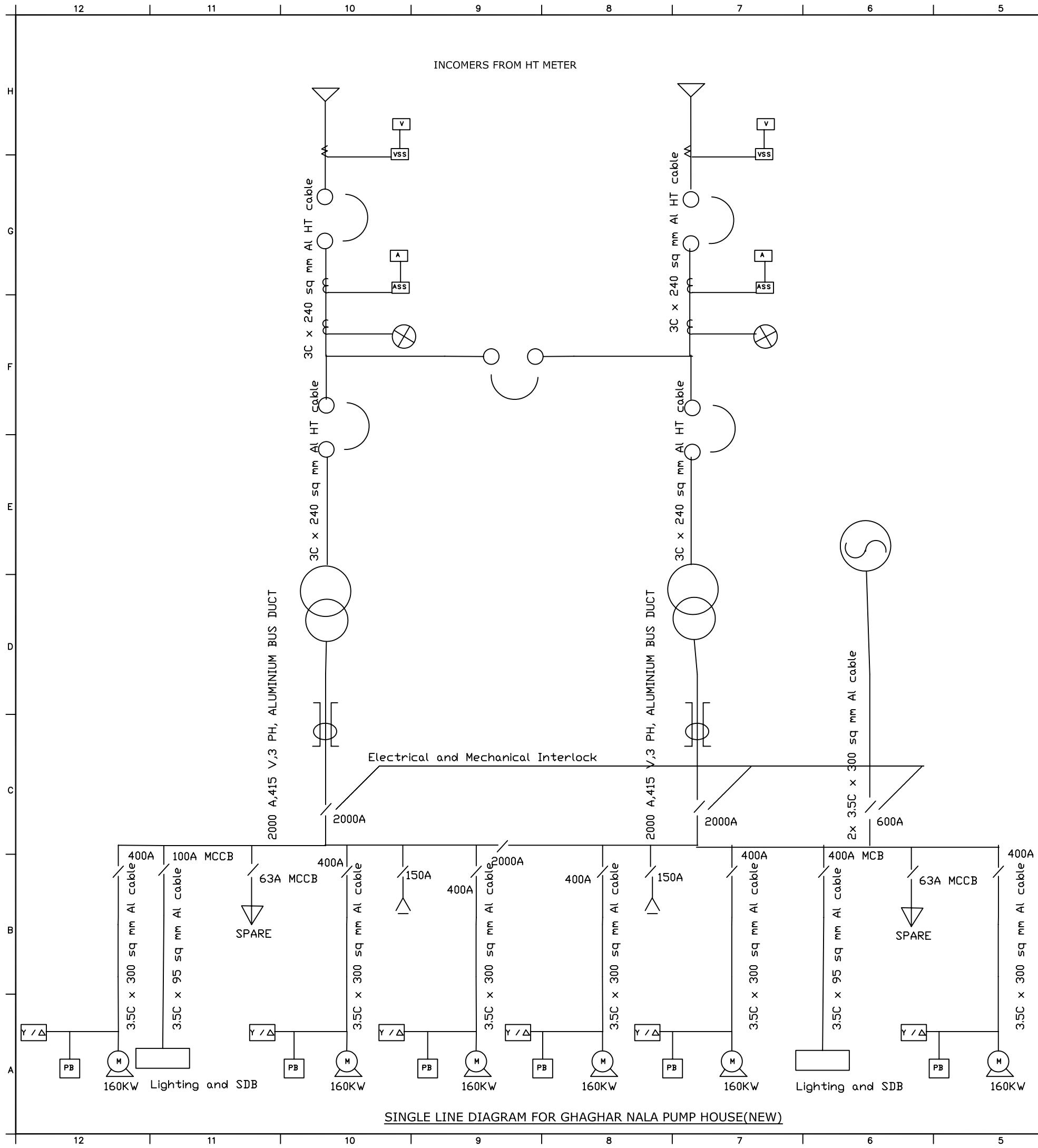
JICA
JAPAN INTERNATIONAL COOPERATION AGENCY
CONSULTANTS:
TOKYO ENGINEERING CONSULTANTS CO., LTD.
CTI ENGINEERING INTERNATIONAL CO., LTD.
STUP CONSULTANTS LTD.

PROJECT:
THE STUDY ON
WATER QUALITY MANAGEMENT PLAN
FOR GANGA RIVER IN THE REPUBLIC OF INDIA
FEASIBILITY STUDY FOR ALLAHABAD CITY

CORRIDOR: District : B
NEW PUMPING STATION AT GHAGGAR NALA (3/4)

SHEET CONTENTS:
HYDRAULIC FLOW DIAGRAM

DRAWING NO.	SHT. NO
ALD-PS-B-GN-3	127



SINGLE LINE DIAGRAM FOR GHAGHAR NALA PUMP HOUSE(NEW)

- LEGEND**
- Capacitor Bank
 - Protective Relay
 - Ammeter
 - Ammeter Selector Switch
 - Voltmeter
 - Voltmeter Selector Switch
 - Current Transformer
 - Potential Transformer
 - 1000A,350 MVA,11 KV VCB
25 KA
 - 1250KVA,11KV/415V Transformer
DY-11
 - DG set 320 KVA,3Ph
415 V,50 HZ
 - TEFC Squirrel Cage Motor
415 V,3 PH,50 HZ
 - Star Delta Motor Starter
 - ACB
 - Remote Push Button

NOTES

INST.					
ELEC.					
MECH.					
STRU.					
CIVIL					
REV NO.	0	1	2	3	4

REV.	DESCRIPTION OF REVISIONS	DATE	CHECKED
CHECKED BY:	RKA	APPROVED BY:	D.Sarkar
DRAWN	S.Mitra	APPROVE	
DESIGNED	S.Sen	SCALE	
SURVEYED		DATE	

JICA JAPAN INTERNATIONAL COOPERATION AGENCY
CONSULTANTS:
TOKYO ENGINEERING CONSULTANTS CO., LTD.
CTL ENGINEERING INTERNATIONAL CO., LTD.
STUP CONSULTANTS LTD.

PROJECT:
THE STUDY ON
WATER QUALITY MANAGEMENT PLAN
FOR GANGA RIVER IN THE REPUBLIC OF INDIA
FEASIBILITY STUDY FOR ALLAHABAD CITY

CORRIDOR: District - B

SHEET CONTENTS:
SINGLE LINE DIAGRAM
NEW PUMPING STATION AT
GHAGHAR NALA (4/4)

DRAWING NO.	SHT. NO.
ALD-PS-B-GN-4	128