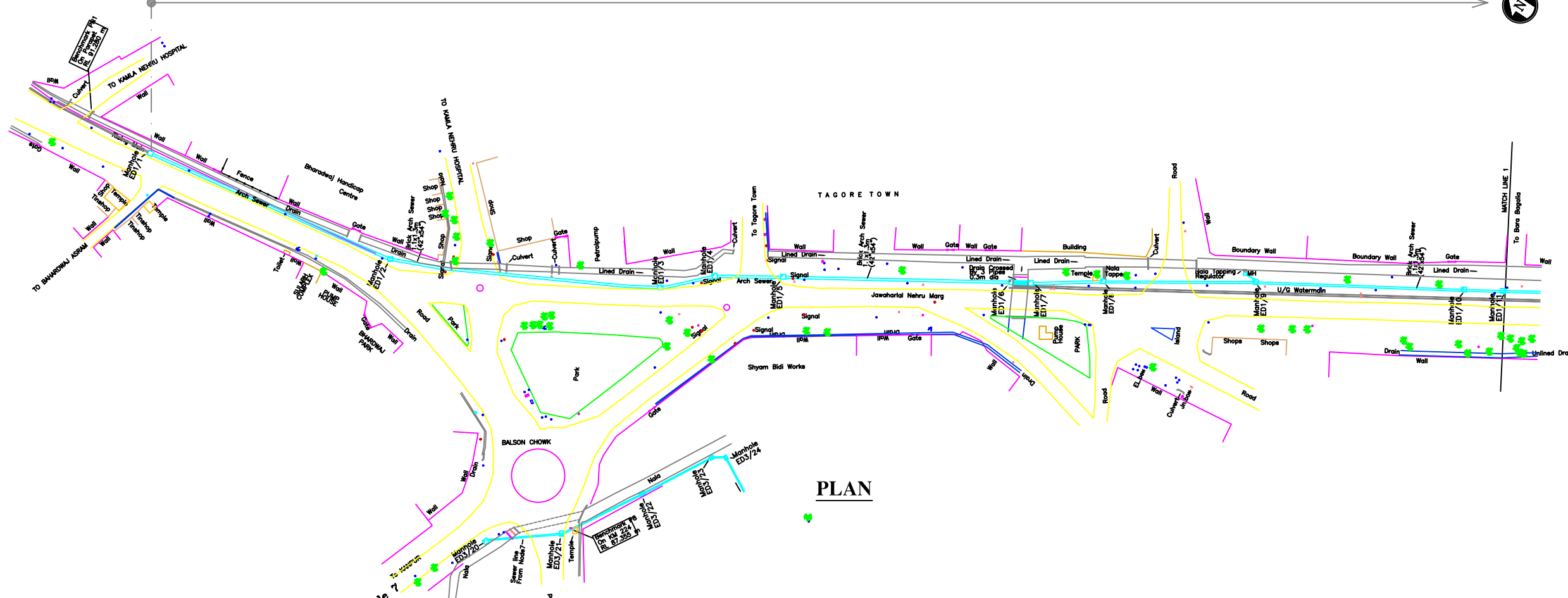


1.1mx1.3m (DESILTING + CCTV)

NODE 8



PLAN

- NOTES:**
- GTS BENCH MARK ON YAMUNA BRIDGE LOCATED ON STONE AT EAST END OF 9th PIER FROM SOUTH OF YAMUNA BRIDGE 292.075 (Feet) /89.024 (m)
 - ALL LEVELS ARE IN METERS
- LEGEND**
- PROPOSED SEWER LINE
 - PROPOSED RISING MAIN
 - ROAD EDGE
 - UNDERGROUND LINES
 - CULVERT/BRIDGE
 - HANDPUMP
 - ELECTRIC POLE
 - ELECTRIC LINE
 - TELEPHONE POLE
 - TELEPHONE LINE
 - TRANSFORMER
 - OFC PILLAR
 - KILOMETER POST
 - TREE
 - HECTOMETER POST
 - LAMP POST
 - RAILWAY LINE
 - NALA
 - WATER MAIN
 - EXISTING SEWER
 - TRENCHLESS TECHNOLOGY
 - NALA CROSSING
 - RAILWAY LINE CROSSING
 - % OF SILT DEPOSITION
- REFERENCE DRAWING:**

INST.					
ELEC.					
MECH.					
STRU.					
CIVIL					
REV. NO.	0	1	2	3	4

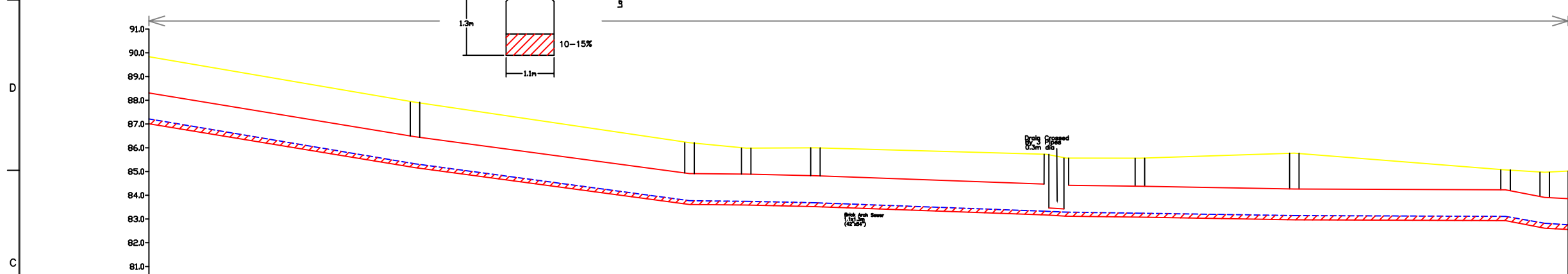
REV.	DESCRIPTION OF REVISIONS	DATE	CHECKED
CHECKED BY:	R.MITTAL	APPROVED BY:	D.Sarkar
DRAWN	S.MITRA	SCALE	H=1:1000 V=1:100
DESIGNED	ANJESH	DATE	03-01-05
SURVEYED	S.SHARMA		

JICA JAPAN INTERNATIONAL COOPERATION AGENCY
 CONSULTANTS:
 TOKYO ENGINEERING CONSULTANTS CO., LTD.
 CTI ENGINEERING INTERNATIONAL CO., LTD.
 STUP CONSULTANTS LTD.

PROJECT:
 THE STUDY ON WATER QUALITY MANAGEMENT PLAN FOR GANGA RIVER IN THE REPUBLIC OF INDIA
 FEASIBILITY STUDY FOR ALLAHABAD CITY
CORRIDOR: District : D
 BAHARDWAJ ASRAM MARG To ALOPIBAG P.S.
 Node : (5-8-11A-11B-ALOPIBAG PS)

SHEET CONTENTS: PLAN AND PROFILE (1/4)
 (Existing Sewer)
 (Ch. 00-588,60)

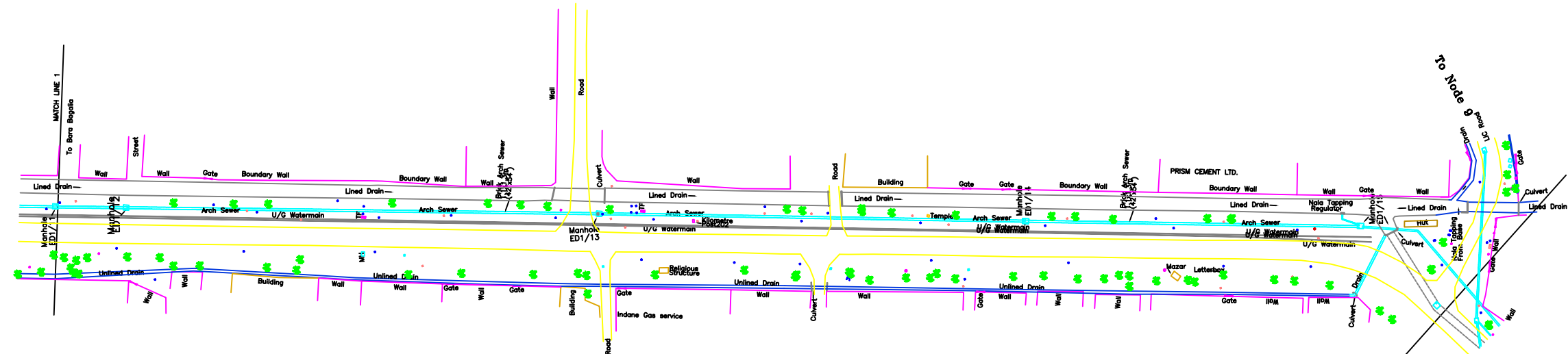
DRAWING NO. ALD-ES-D (BM-APS)-1 **SHT. NO.** 91



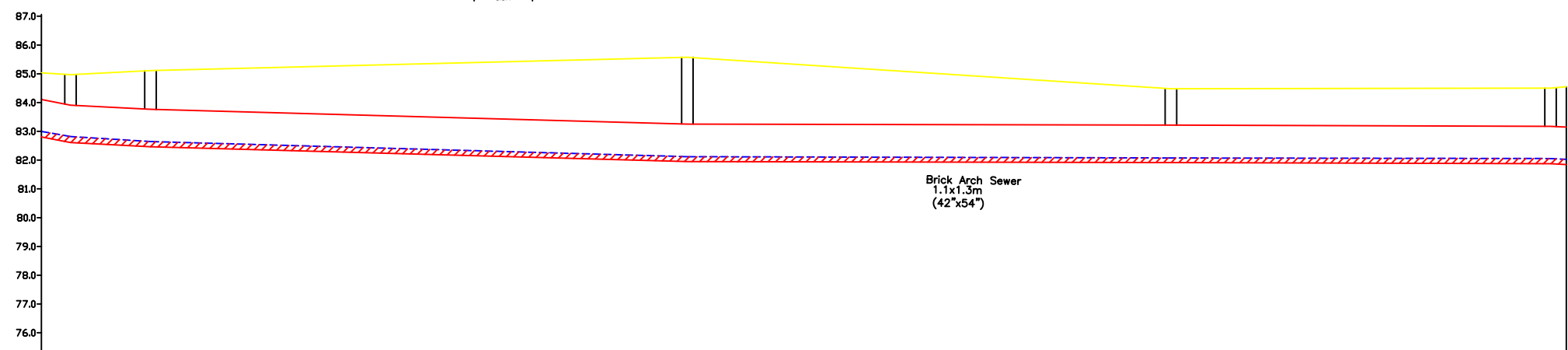
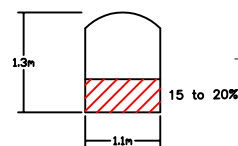
L-SECTION

GROUND LEVEL	89.834		87.92		86.215	85.985	86.0		85.726	85.565	85.561		85.774		85.07	84.97
SEWER TOP LEVEL	88.31		86.465		84.912	84.89	84.82		84.47	84.42	84.38		84.265		84.23	83.91
SILT LEVEL	87.215		85.325		83.772	83.745	83.685		83.325	83.29	83.245		83.145		83.11	82.82
SEWER BOTTOM	87.01		85.165		83.612	83.59	83.519		83.17	83.12	83.08		82.965		82.93	82.61
MANHOLE ID	ED1/1		ED1/2		ED1/3	ED1/4	ED1/5		ED1/6	ED1/7	ED1/8		ED1/9		ED1/10	ED1/11
SEWER SIZE						Brick Arch Sewer 1.1x1.3m (42"x54")										
CHAINAGE (M)	00		112.19		227.95	251.85	281.06		378.49	386.84	417.88		483.00		572.09	588.60

NODE 5 ← 1.1mx1.3m (DESILTING + CCTV) → NODE 11A



PLAN



GROUND LEVEL	84.97	85.11	85.575	84.478	84.5
WATER LEVEL/ LOOSE DEPOSIT					
SEWER TOP LEVEL	83.91	83.765	83.25	83.215	83.175
SILT LEVEL	82.82	82.645	82.12	82.075	82.055
SEWER BOTTOM	82.61	82.465	81.95	81.915	81.875
MANHOLE ID	ED1/11	ED1/12	ED1/13	ED1/14	ED1/15
SEWER SIZE	Brick Arch Sewer 1.1x1.3m (42"x54")				
CHAINAGE (M)	588.60	616.44	803.23	971.47	1103.55

L-SECTION

- NOTES:**
- GTS BENCH MARK ON YAMUNA BRIDGE LOCATED ON STONE AT EAST END OF 9th PIER FROM SOUTH OF YAMUNA BRIDGE 292.075 (Feet) /89.024 (m)
 - ALL LEVELS ARE IN METERS

LEGEND

PROPOSED SEWER LINE	
PROPOSED RISING MAIN	
ROAD EDGE	
UNDERGROUND LINES	
CULVERT/BRIDGE	
HANDPUMP	
ELECTRIC POLE	
ELECTRIC LINE	
TELEPHONE POLE	
TELEPHONE LINE	
TRANSFORMER	
OFC PILLAR	
KILOMETER POST	
TREE	
HECTOMETER POST	
LAMP POST	
RAILWAY LINE	
NALA	
WATER MAIN	
EXISTING SEWER	
TRENCHLESS TECHNOLOGY	
NALA CROSSING	
RAILWAY LINE CROSSING	
% OF SILT DEPOSITION	

REFERENCE DRAWING:

INST.					
ELEC.					
MECH.					
STRU.					
CIVIL					
REV NO.	0	1	2	3	4

REV.	DESCRIPTION OF REVISIONS	DATE	CHECKED
CHECKED BY:	R.MITTAL	APPROVED BY:	D.Sarkar
DRAWN	S.MITRA	APPROVE	
DESIGNED	ANJESH	SCALE	H=1:1000 V=1:100
SURVEYED	S.SHARMA	DATE	03-1-05

JICA JAPAN INTERNATIONAL COOPERATION AGENCY

CONSULTANTS:

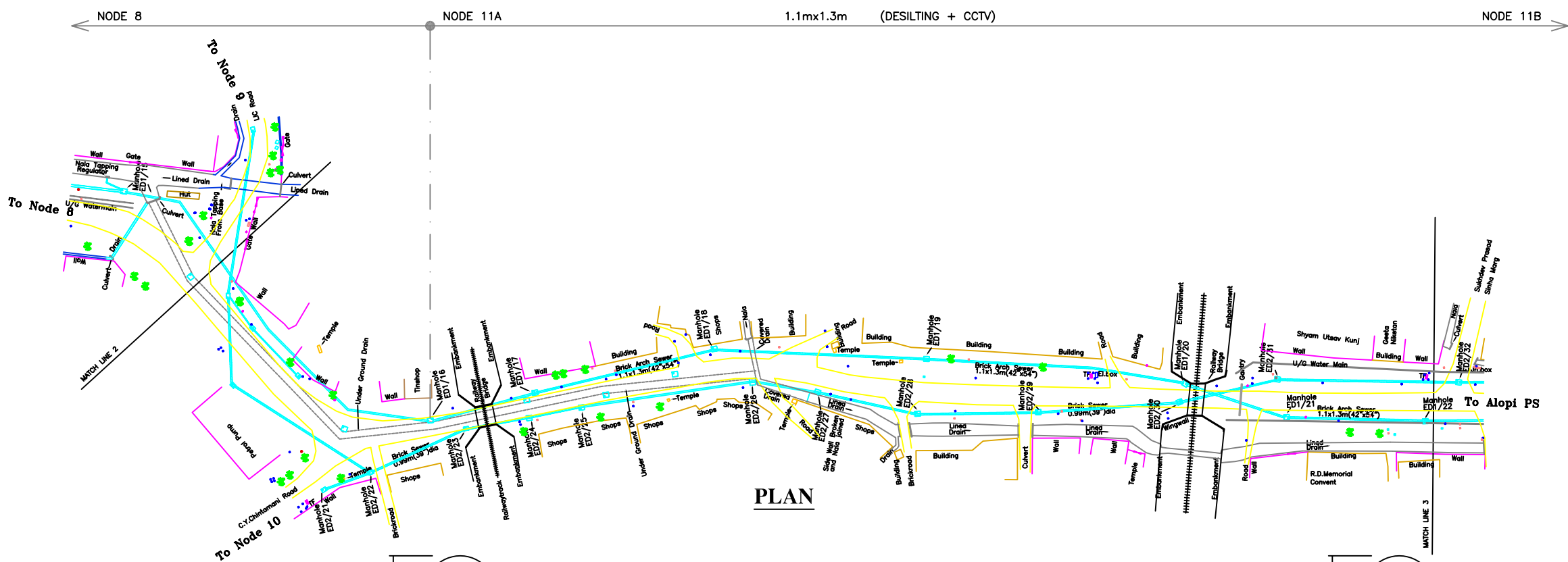
- TOKYO ENGINEERING CONSULTANTS CO., LTD.
- CTI ENGINEERING INTERNATIONAL CO., LTD.
- STUP CONSULTANTS LTD.

PROJECT:
THE STUDY ON WATER QUALITY MANAGEMENT PLAN FOR GANGA RIVER IN THE REPUBLIC OF INDIA
FEASIBILITY STUDY FOR ALLAHABAD CITY

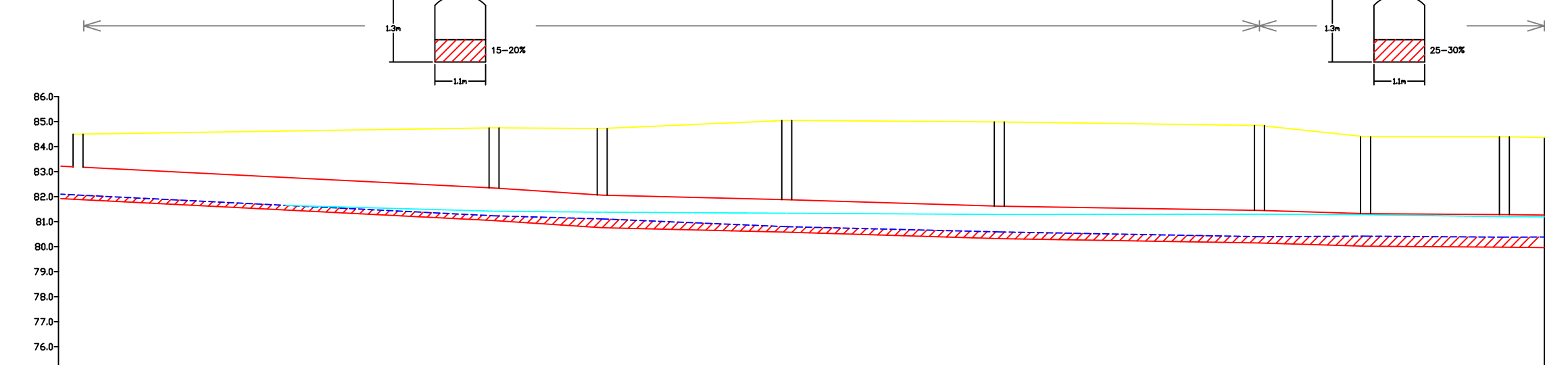
CORRIDOR: District : D
BAHARDWAJ ASRAM MARG To ALOPIBAG P.S.
Node : (5-8-11A-11B-ALOPIBAG PS)

SHEET CONTENTS: PLAN AND PROFILE (2/4)
(Existing Sewer)
(Ch. 588.60-1103.55)

DRAWING NO.	SHT. NO
ALD-ES-D (BM-APS)-2	92



PLAN



L-SECTION

GROUND LEVEL	84.5	84.75	84.725	85.05	84.989	84.845	84.397	84.395
WATER LEVEL LOOSE DEPOSIT	81.875	81.42	81.38	81.34	81.29	81.3	81.28	81.2
SEWER TOP LEVEL	83.175	82.344	82.06	81.88	81.62	81.45	81.32	81.28
SILT LEVEL	82.055	81.234	81.11	80.8	80.59	80.4	80.42	80.38
SEWER BOTTOM	81.875	81.044	80.76	80.58	80.32	80.15	80.02	79.98
MANHOLE ID	ED1/15	ED1/16	ED1/17	ED1/18	ED1/19	ED1/20	ED1/21	ED1/22
SEWER SIZE	Brick Arch Sewer 1.1x1.3m (42"x54")							
CHAINAGE (M)	1103.55	1267.95	1311.19	1385.03	1470.04	1574.09	1666.55	1672.07

- NOTES:
- GTS BENCH MARK ON YAMUNA BRIDGE LOCATED ON STONE AT EAST END OF 9th PIER FROM SOUTH OF YAMUNA BRIDGE 292.075 (Feet) /89.024 (m)
 - ALL LEVELS ARE IN METERS

LEGEND

- PROPOSED SEWER LINE
- PROPOSED RISING MAIN
- ROAD EDGE
- UNDERGROUND LINES
- CULVERT/BRIDGE
- HANDPUMP
- ELECTRIC POLE
- ELECTRIC LINE
- TELEPHONE POLE
- TELEPHONE LINE
- TRANSFORMER
- OFC PILLAR
- KILOMETER POST
- TREE
- HECTOMETER POST
- LAMP POST
- RAILWAY LINE
- NALA
- WATER MAIN
- EXISTING SEWER
- TRENCHLESS TECHNOLOGY
- NALA CROSSING
- RAILWAY LINE CROSSING
- % OF SILT DEPOSITION

REFERENCE DRAWING:

INST.					
ELEC.					
MECH.					
STRU.					
CIVIL					
REV NO.	0	1	2	3	4

REV.	DESCRIPTION OF REVISIONS	DATE	CHECKED

CHECKED BY: R.MITTAL
 APPROVED BY: D.Sarkar

DRAWN: S.MITRA
 DESIGNED: ANESH
 SURVEYED: S.SHARMA

SCALE: H=1:1000
 V=1:100

DATE: 03-01-05

JICA JAPAN INTERNATIONAL COOPERATION AGENCY

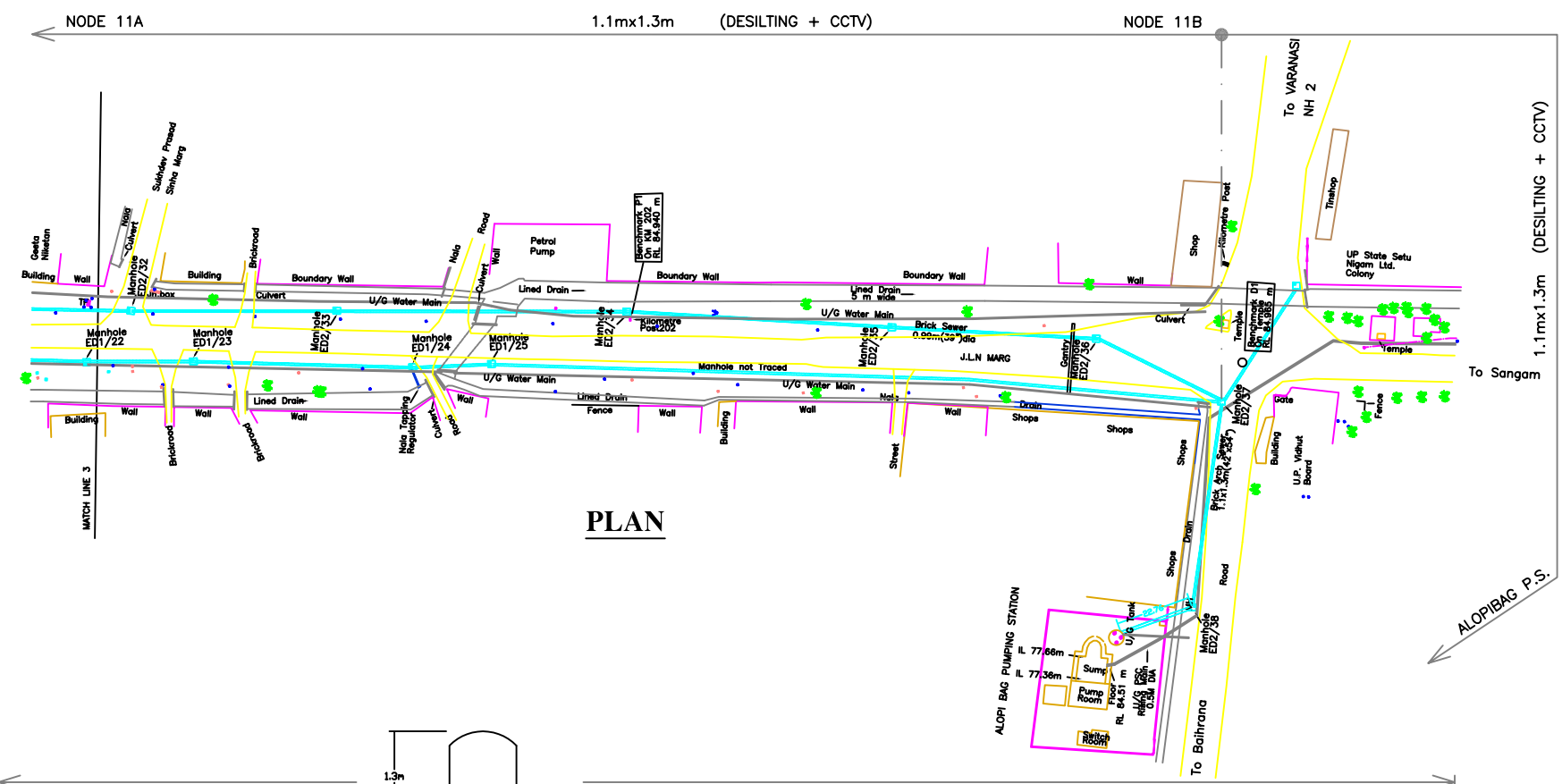
CONSULTANTS:
 TOKYO ENGINEERING CONSULTANTS CO., LTD.
 CTI ENGINEERING INTERNATIONAL CO., LTD.
 STUP CONSULTANTS LTD.

PROJECT:
 THE STUDY ON WATER QUALITY MANAGEMENT PLAN FOR GANGA RIVER IN THE REPUBLIC OF INDIA
 FEASIBILITY STUDY FOR ALLAHABAD CITY

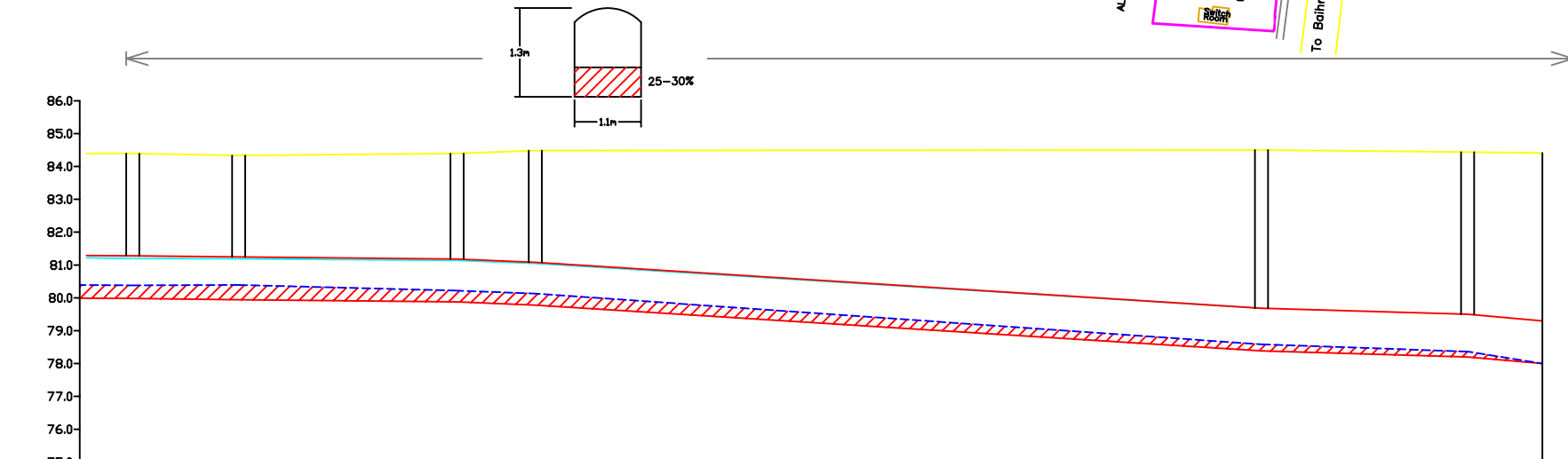
CORRIDOR: District : D
 BAHARDWAJ ASRAM MARG To ALOPIBAG P.S.
 Node : (5-8-11A-11B-ALOPIBAG PS)

SHEET CONTENTS: PLAN AND PROFILE (3/4)
 (Existing Sewer)
 (Ch. 1103.55-1672.07)

DRAWING NO. ALD-ES-D (BM-APS)-3
 SHT. NO. 93



PLAN



L-SECTION

GROUND LEVEL	84.395	84.332	84.392	84.483	84.501	84.435	84.41
WATER LEVEL / LOOSE DEPOSIT	81.2	81.19	81.14	81.05	79.685	78.825	78.0
SEWER TOP LEVEL	81.28	81.245	81.179	81.08	79.685	79.5	79.3
SILT LEVEL	80.38	80.392	80.22	80.13	78.585	78.365	78.0
SEWER BOTTOM	79.98	79.945	79.879	79.78	78.385	78.2	78.0
MANHOLE ID	ED1/22	ED1/23	ED1/24	ED1/25	ED1/26 ED2/37	ED2/38	SUMP
SEWER SIZE	Brick Arch Sewer 1.1x1.3m (42"x54")						
CHAINAGE (M)	1675.07	1704.3	1770.76	1794.58	2015.56	2078.29	2101.05



- NOTES:**
- GTS BENCH MARK ON YAMUNA BRIDGE LOCATED ON STONE AT EAST END OF 9th PIER FROM SOUTH OF YAMUNA BRIDGE 292.075 (Feet) /89.024 (m)
 - ALL LEVELS ARE IN METERS
- LEGEND**
- PROPOSED SEWER LINE
 - PROPOSED RISING MAIN
 - ROAD EDGE
 - UNDERGROUND LINES
 - CULVERT/BRIDGE
 - HANDPUMP
 - ELECTRIC POLE
 - ELECTRIC LINE
 - TELEPHONE POLE
 - TELEPHONE LINE
 - TRANSFORMER
 - OFC PILLAR
 - KILOMETER POST
 - TREE
 - HECTOMETER POST
 - LAMP POST
 - RAILWAY LINE
 - NALA
 - WATER MAIN
 - EXISTING SEWER
 - TRENCHLESS TECHNOLOGY
 - NALA CROSSING
 - RAILWAY LINE CROSSING
 - % OF SILT DEPOSITION
- REFERENCE DRAWING:**

INST.					
ELEC.					
MECH.					
STRU.					
CIVIL					
REV NO.	0	1	2	3	4

REV.	DESCRIPTION OF REVISIONS	DATE	CHECKED
CHECKED BY:	R.MITTAL	APPROVED BY:	D.Sarkar
DRAWN	S.MITRA	SCALE	H=1:1000 V=1:100
DESIGNED	ANJESH	DATE	03-01-05
SURVEYED	S.SHARMA		

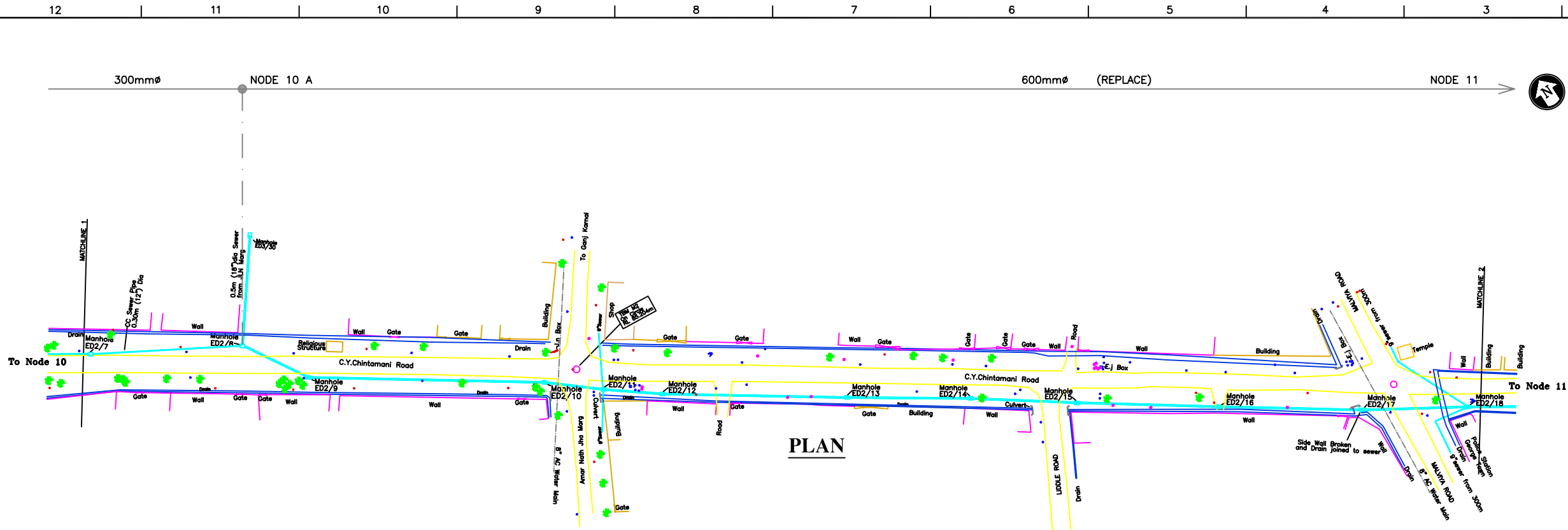
JICA JAPAN INTERNATIONAL COOPERATION AGENCY
 CONSULTANTS:
 TOKYO ENGINEERING CONSULTANTS CO., LTD.
 CTI ENGINEERING INTERNATIONAL CO., LTD.
 STUP CONSULTANTS LTD.

PROJECT:
 THE STUDY ON WATER QUALITY MANAGEMENT PLAN FOR GANGA RIVER IN THE REPUBLIC OF INDIA
 FEASIBILITY STUDY FOR ALLAHABAD CITY

CORRIDOR: District : D
 BAHARUWAJ ASRAM MARG To ALOPIBAG P.S.
 Node : (5-8-11A-11B-ALOPIBAG PS)

SHEET CONTENTS:
 PLAN AND PROFILE (4/4)
 (Existing Sewer)
 (Ch. 1672.07-2101.05)

DRAWING NO.	SHT. NO.
ALD-ES-D (BM-APS)-4	94



PLAN

- NOTES:**
- GTS BENCH MARK ON YAMUNA BRIDGE LOCATED ON STONE AT EAST END OF 9th PIER FROM SOUTH OF YAMUNA BRIDGE 292.075 (Feet) /89.024 (m)
 - ALL LEVELS ARE IN METERS

LEGEND

PROPOSED SEWER LINE	
PROPOSED RISING MAIN	
ROAD EDGE	
UNDERGROUND LINES	
CULVERT/BRIDGE	
HANDPUMP	
ELECTRIC POLE	
ELECTRIC LINE	
TELEPHONE POLE	
TELEPHONE LINE	
TRANSFORMER	
OFC PILLAR	
KILOMETER POST	
TREE	
HECTOMETER POST	
LAMP POST	
RAILWAY LINE	
NALA	
WATER MAIN	
EXISTING SEWER	
TRENCHLESS TECHNOLOGY	
NALA CROSSING	
RAILWAY LINE CROSSING	
% OF SILT DEPOSITION	

REFERENCE DRAWING:

INST.					
ELEC.					
MECH.					
STRU.					
CIVIL					
REV NO.	0	1	2	3	4

REV.	DESCRIPTION OF REVISIONS	DATE	CHECKED

CHECKED BY: R.MITTAL
 APPROVED BY: D.Sarkar

DRAWN: S.MITRA
 APPROVE:

DESIGNED: ANJESH
 SCALE: H=1:1000
 V=1:100

SURVEYED: S.SHARMA
 DATE: 03-01-05

JICA JAPAN INTERNATIONAL COOPERATION AGENCY

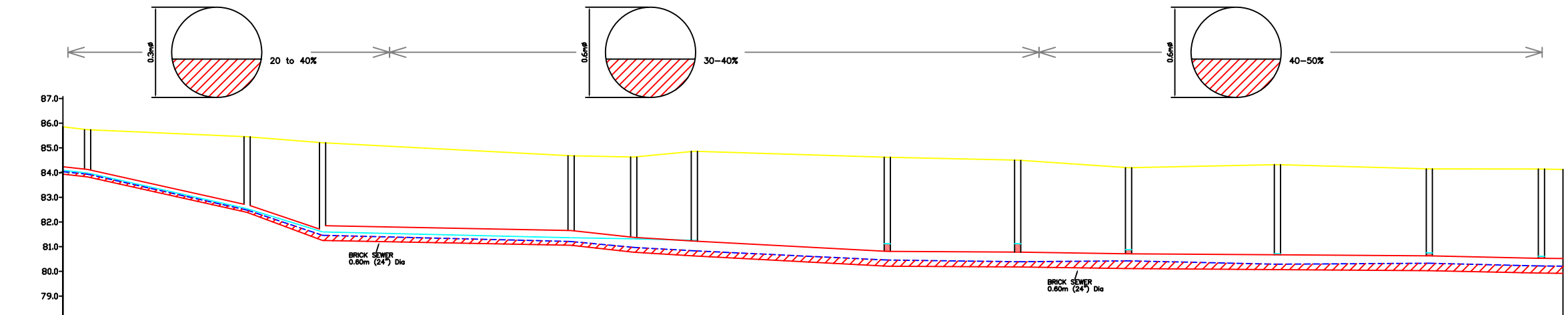
CONSULTANTS:
 TOKYO ENGINEERING CONSULTANTS CO., LTD.
 CTI ENGINEERING INTERNATIONAL CO., LTD.
 STUP CONSULTANTS LTD.

PROJECT:
 THE STUDY ON WATER QUALITY MANAGEMENT PLAN FOR GANGA RIVER IN THE REPUBLIC OF INDIA
 FEASIBILITY STUDY FOR ALLAHABAD CITY

CORRIDOR: District : D
 DARBHANGA COLONY TO ALOPIBAG PS
 Node : (10-10A-11-11B)

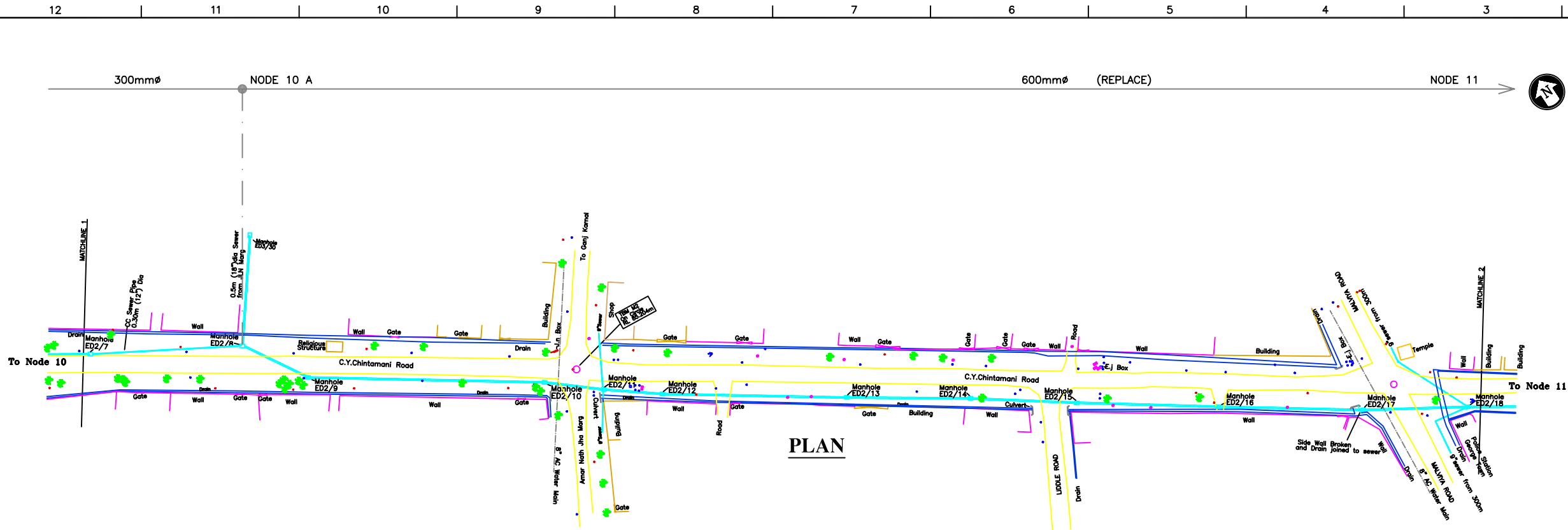
SHEET CONTENTS: PLAN AND PROFILE (2/4)
 (Existing Sewer)
 (Ch. 421.21-1009.25)

DRAWING NO.	SHT. NO.
ALD-ES-D (DC-APS)-2	96



L-SECTION

GROUND LEVEL	85.737		85.453	85.207		84.62	84.503	84.198	84.324	84.151	84.146			
WATER LEVEL/ LOOSE DEPOSIT	83.986	82.54	81.6			81.12	80.92	80.88	80.71	80.75	80.61			
SEWER TOP LEVEL	84.126	82.689	81.85			80.809	80.779	80.712	80.67	80.629	80.531			
SILT LEVEL	83.935	82.48	81.46			80.459	80.39	80.425	80.29	80.329	80.22			
INVERT LEVEL	83.826	82.389	81.25			80.209	80.179	80.112	80.07	80.029	79.931			
MANHOLE ID	ED2/7	ED2/8	ED2/9			ED2/13	ED2/14	ED2/15	ED2/16	ED2/17	ED2/18			
SEWER SIZE	CONCRETE PIPE 0.3M (12") DIA			BRICK MASONRY SEWER 0.6M (24") DIA										
CHAINAGE (M)	481.21	485.87	516.44			617.19	642.56	667.14	745.34	798.32	843.16	903.47	965.06	1009.25



PLAN

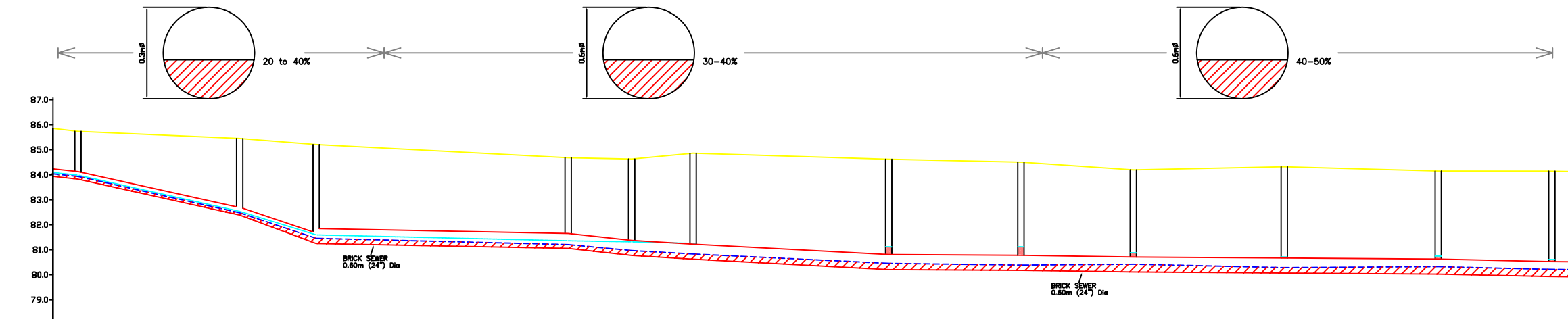
- NOTES:**
- GTS BENCH MARK ON YAMUNA BRIDGE LOCATED ON STONE AT EAST END OF 9th PIER FROM SOUTH OF YAMUNA BRIDGE 292.075 (Feet) /89.024 (m)
 - ALL LEVELS ARE IN METERS

LEGEND

PROPOSED SEWER LINE	
PROPOSED RISING MAIN	
ROAD EDGE	
UNDERGROUND LINES	
CULVERT/BRIDGE	
HANDPUMP	
ELECTRIC POLE	
ELECTRIC LINE	
TELEPHONE POLE	
TELEPHONE LINE	
TRANSFORMER	
OFC PILLAR	
KILOMETER POST	
TREE	
HECTOMETER POST	
LAMP POST	
RAILWAY LINE	
NALA	
WATER MAIN	
EXISTING SEWER	
TRENCHLESS TECHNOLOGY	
NALA CROSSING	
RAILWAY LINE CROSSING	
% OF SILT DEPOSITION	

REFERENCE DRAWING:

INST.					
ELEC.					
MECH.					
STRU.					
CIVIL					
REV NO.	0	1	2	3	4
REV.	DESCRIPTION OF REVISIONS		DATE	CHECKED	
CHECKED BY:	R.MITTAL		APPROVED BY:		
	CHECK		D.Sarkar		
DRAWN	S.MITRA		APPROVE		
DESIGNED	ANJESH	SCALE	H=1:1000	V=1:100	
SURVEYED	S.SHARMA	DATE	03-01-05		



GROUND LEVEL	85.737		85.453	85.207		84.68	84.628	84.861		84.62	84.503	84.198	84.324	84.151	84.146
WATER LEVEL/ LOOSE DEPOSIT	83.986	82.54	81.6		81.364	81.32	81.26		81.12	80.92	80.88	80.71	80.75	80.61	
SEWER TOP LEVEL	84.126	82.689	81.85		81.655	81.377	81.225		80.809	80.779	80.712	80.67	80.629	80.531	
SILT LEVEL	83.935	82.48	81.46		81.21	80.97	80.832		80.459	80.39	80.425	80.29	80.329	80.22	
INVERT LEVEL	83.826	82.389	81.25		81.055	80.777	80.625		80.209	80.179	80.112	80.07	80.029	79.931	
MANHOLE ID	ED2/7	ED2/8	ED2/9		ED2/10	ED2/11	ED2/12		ED2/13	ED2/14	ED2/15	ED2/16	ED2/17	ED2/18	
SEWER SIZE	CONCRETE PIPE 0.3M (12") DIA				BRICK MASONRY SEWER 0.6M (24") DIA										
CHAINAGE (M)	481.21	485.87	516.44		617.19	642.56	667.14		745.34	798.32	843.16	903.47	965.06	1009.25	

L-SECTION

JICA JAPAN INTERNATIONAL COOPERATION AGENCY

CONSULTANTS:

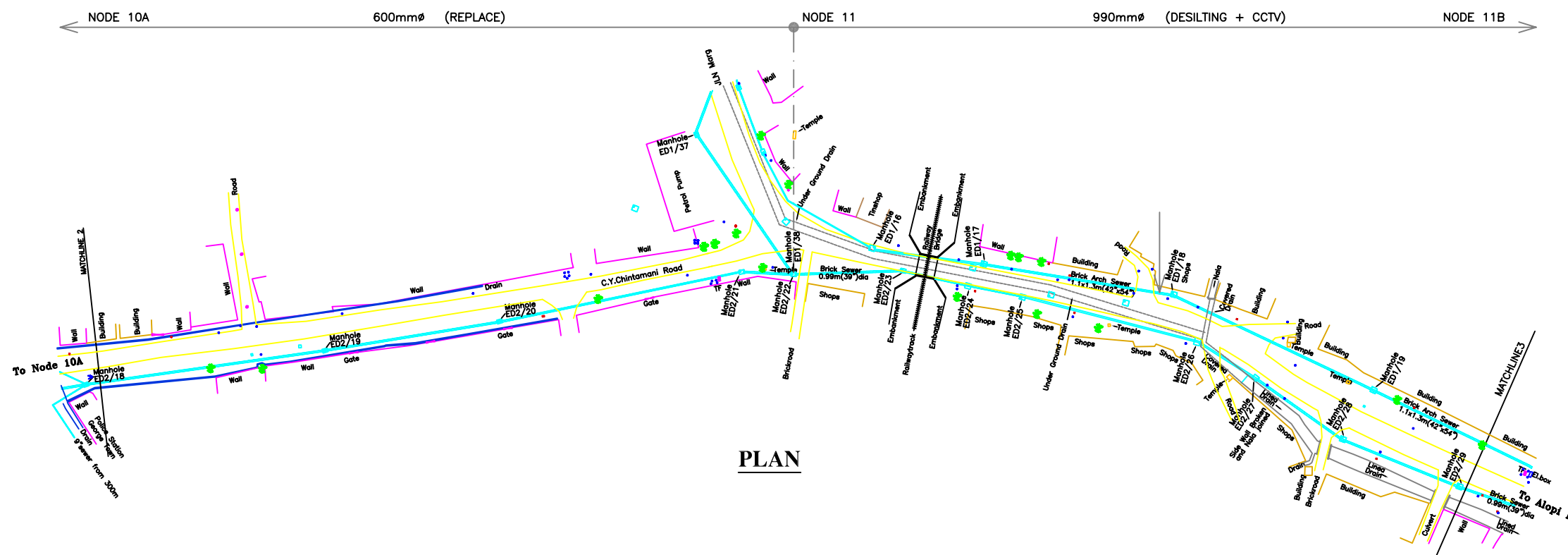
 TOKYO ENGINEERING CONSULTANTS CO., LTD.
 CTI ENGINEERING INTERNATIONAL CO., LTD.
 STUP CONSULTANTS LTD.

PROJECT:
 THE STUDY ON WATER QUALITY MANAGEMENT PLAN FOR GANGA RIVER IN THE REPUBLIC OF INDIA
 FEASIBILITY STUDY FOR ALLAHABAD CITY

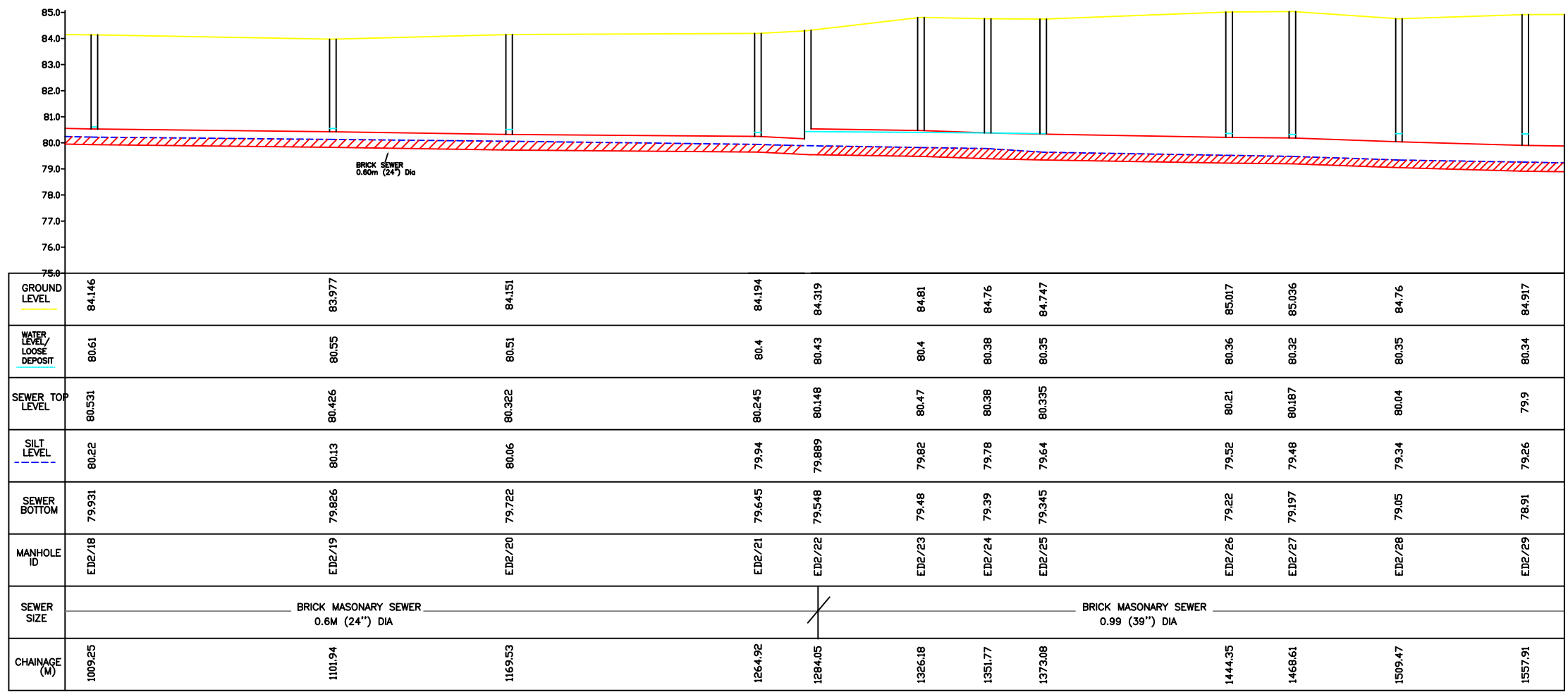
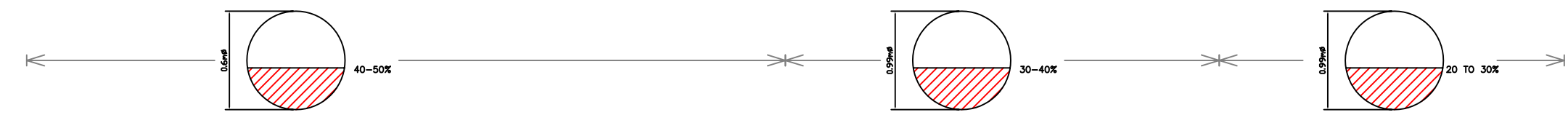
CORRIDOR: District : D
 DARBHANGA COLONY TO ALOPIBAG PS
 Node : (10-10A-11-11B)

SHEET CONTENTS:
 PLAN AND PROFILE (2/4)
 (Existing Sewer)
 (Ch. 421.21-1009.25)

DRAWING NO. ALD-ES-D (DC-APS)-2 SHT. NO. 96



PLAN



L-SECTION

- NOTES:
- GTS BENCH MARK ON YAMUNA BRIDGE LOCATED ON STONE AT EAST END OF 9th PIER FROM SOUTH OF YAMUNA BRIDGE 292.075 (Feet) /89.024 (m)
 - ALL LEVELS ARE IN METERS

LEGEND

PROPOSED SEWER LINE	
PROPOSED RISING MAIN	
ROAD EDGE	
UNDERGROUND LINES	
CULVERT/BRIDGE	
HANDPUMP	
ELECTRIC POLE	
ELECTRIC LINE	
TELEPHONE POLE	
TELEPHONE LINE	
TRANSFORMER	
OFC PILLAR	
KILOMETER POST	
TREE	
HECTOMETER POST	
LAMP POST	
RAILWAY LINE	
NALA	
WATER MAIN	
EXISTING SEWER	
TRENCHLESS TECHNOLOGY	
NALA CROSSING	
RAILWAY LINE CROSSING	
% OF SILT DEPOSITION	

REFERENCE DRAWING:

INST.					
ELEC.					
MECH.					
STRU.					
CIVIL					
REV. NO.	0	1	2	3	4

CHECKED BY:	R.MITTAL	APPROVED BY:	D.Sarkar
DRAWN	S.MITRA	SCALE	H=1:1000 V=1:100
DESIGNED	ANJESH	DATE	03-01-05
SURVEYED	S.SHARMA		

JICA JAPAN INTERNATIONAL COOPERATION AGENCY

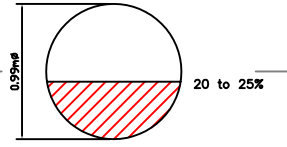
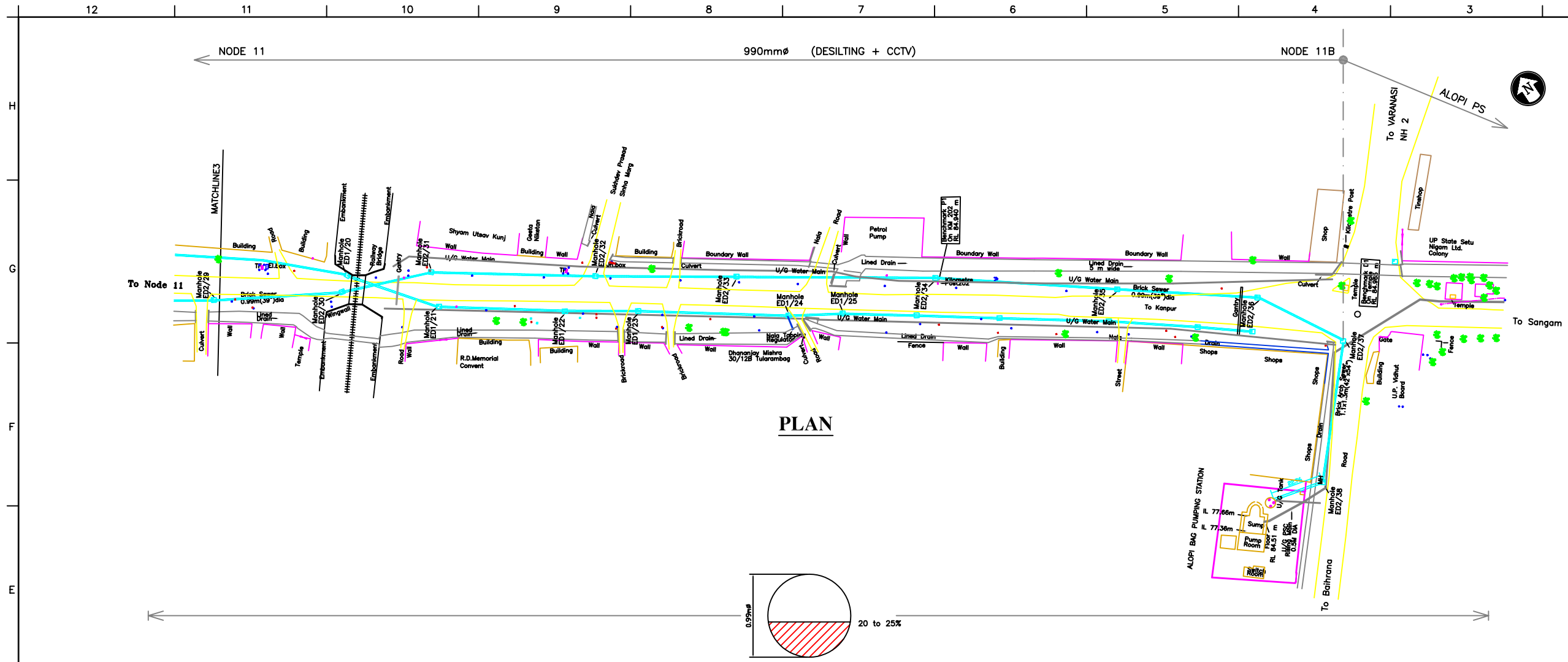
CONSULTANTS:

PROJECT:
 THE STUDY ON WATER QUALITY MANAGEMENT PLAN FOR GANGA RIVER IN THE REPUBLIC OF INDIA
 FEASIBILITY STUDY FOR ALLAHABAD CITY

CORRIDOR: District : D
 DARBHANGA COLONY TO ALOPI PS
 Node : (10 -10A-11-11B)

SHEET CONTENTS:
 PLAN AND PROFILE (3/4)
 (Existing Sewer)
 (Ch. 1009.25-1557.91)

DRAWING NO. ALD-ES-D (DC-APS)-3 SHT. NO. 97



- NOTES:**
- GTS BENCH MARK ON YAMUNA BRIDGE LOCATED ON STONE AT EAST END OF 9th PIER FROM SOUTH OF YAMUNA BRIDGE 292.075 (Feet) /89.024 (m)
 - ALL LEVELS ARE IN METERS

LEGEND

PROPOSED SEWER LINE	
PROPOSED RISING MAIN	
ROAD EDGE	
UNDERGROUND LINES	
CULVERT/BRIDGE	
HANDPUMP	
ELECTRIC POLE	
ELECTRIC LINE	
TELEPHONE POLE	
TELEPHONE LINE	
TRANSFORMER	
OFC PILLAR	
KILOMETER POST	
TREE	
HECTOMETER POST	
LAMP POST	
RAILWAY LINE	
NALA	
WATER MAIN	
EXISTING SEWER	
TRENCHLESS TECHNOLOGY	
NALA CROSSING	
RAILWAY LINE CROSSING	
% OF SILT DEPOSITION	

REFERENCE DRAWING:

INST.					
ELEC.					
MECH.					
STRU.					
CIVIL					
REV NO.	0	1	2	3	4

REV.	DESCRIPTION OF REVISIONS	DATE	CHECKED
CHECKED BY:	R.MITTAL	APPROVED BY:	D.Sarkar
DRAWN	S.MITRA	APPROVE	
DESIGNED	ANJESH	SCALE	H=1:1000 V=1:100
SURVEYED	S.SHARMA	DATE	03-01-05

JICA JAPAN INTERNATIONAL COOPERATION AGENCY

CONSULTANTS:

PROJECT:
 THE STUDY ON WATER QUALITY MANAGEMENT PLAN FOR GANGA RIVER IN THE REPUBLIC OF INDIA
 FEASIBILITY STUDY FOR ALLAHABAD CITY

CORRIDOR: District : D
 DARBHANGA COLONY TO ALOPI PS
 Node : (10-10A-11-11B)

SHEET CONTENTS:
 PLAN AND PROFILE (4/4)
 (Existing Sewer)
 (Ch. 1557.91-2147.17)

DRAWING NO.	SHT. NO.
ALD-ES-D (DC-APS)-4	98

GROUND LEVEL	84.917	84.93	84.566	84.518	84.069	84.347	84.276	84.29	84.501	84.435	84.41
WATER LEVEL/ LOOSE DEPOSIT	80.34	80.36	80.28	80.27	80.25	80.19	80.12	80.17	79.685	78.825	78.0
SEWER TOP LEVEL	79.9	79.83	79.78	79.67	79.6	79.575	79.515	79.463	79.685	79.5	79.3
SILT LEVEL	79.26	79.15	78.99	78.91	78.825	78.825	78.715	78.623	78.585	78.365	78.0
SEWER BOTTOM	78.91	78.84	78.79	78.68	78.61	78.585	78.525	78.473	78.385	78.2	78.0
MANHOLE ID	ED2/29	ED2/30	ED2/31	ED2/32	ED2/33	ED2/34	ED2/35	ED2/36	ED2/37	ED2/38	SUMP
SEWER SIZE	BRICK MASONARY SEWER 0.99 (39") DIA								BRICK MASONARY SEWER Arch 1.1x1.3m (42"x54")		
CHAINAGE (M)	1557.91	1613.74	1654.53	1727.05	1789.18	1877.02	1957.4	2019.23	2061.68	2124.41	2147.17

L-SECTION