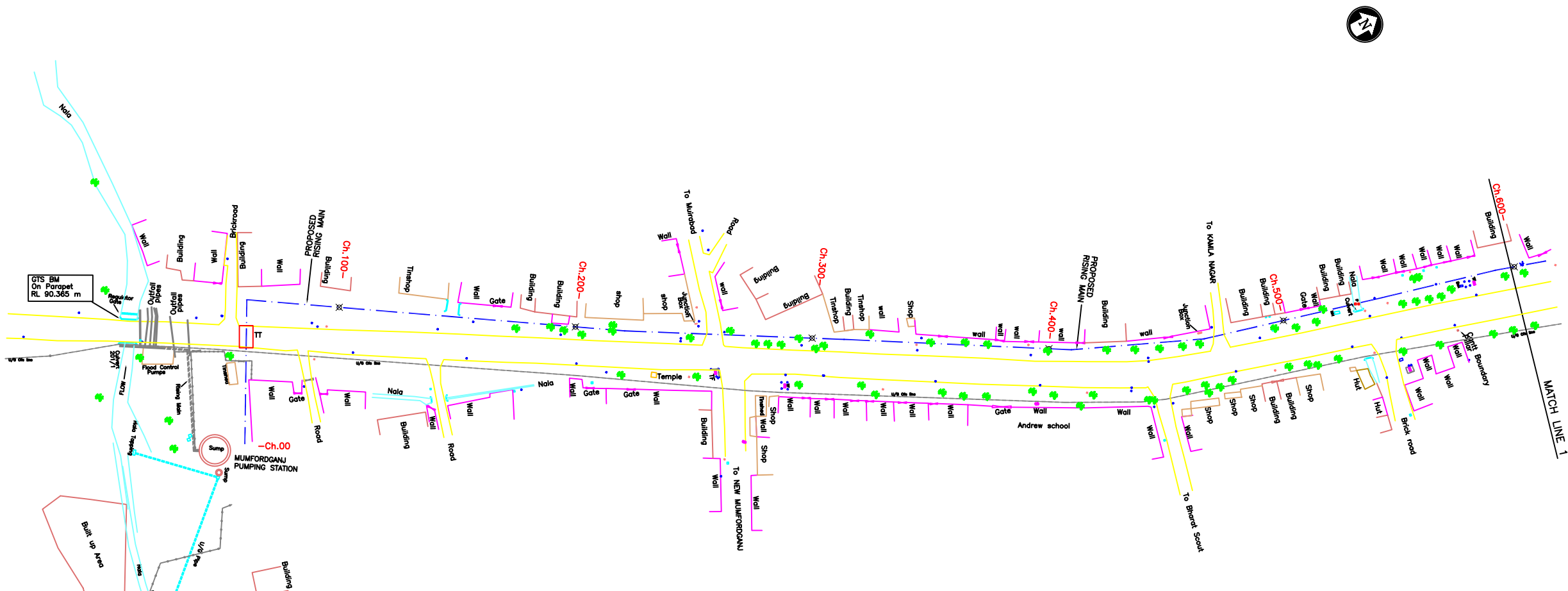
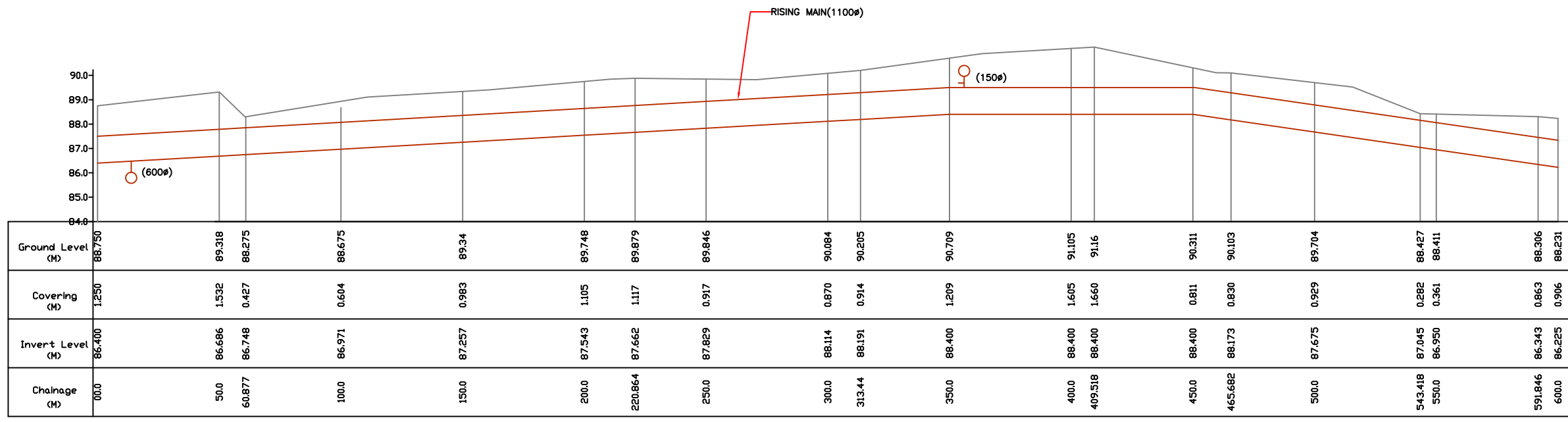


TO MUMFORDGANJ PS 10 D-(1100Ø PSC PIPE) TO RAJAPUR STP



PLAN



L-SECTION

- NOTES:**
- GTS BENCH MARK ON YAMUNA BRIDGE LOCATED ON STONE AT EAST END OF 9th PIER FROM SOUTH OF YAMUNA BRIDGE 292.075 FT. (89.024 m.)
 - ALL LEVELS ARE IN METERS
 - AIR VALVES /SCOUR VALVES /ISOLATION VALVES HAVE NOT BEEN SHOWN IN PLAN FOR CLARITY.

LEGEND

PROPOSED SEWER LINE	
PROPOSED RISING MAIN	
ROAD EDGE	
UNDERGROUND LINES	
CULVERT/BRIDGE	
HANDPUMP	
ELECTRIC POLE	
ELECTRIC LINE	
TELEPHONE POLE	
TELEPHONE LINE	
TRANSFORMER	
OFC PILLAR	
KILOMETER POST	
TREE	
HECTOMETER POST	
LAMP POST	
RAILWAY LINE	
NALA	
WATER MAIN	
EXISTING SEWER	
TRENCHLESS TECHNOLOGY	
NALA CROSSING	
RAILWAY LINE CROSSING	
AIR VALVE	
SCOUR VALVE	
ISOLATION VALVE	

REFERENCE DRAWING:

INST.	
ELEC.	
MECH.	
STRU.	
CIVIL	
REV NO.	0 1 2 3 4

REV.	DESCRIPTION OF REVISIONS	DATE	CHECKED

CHECKED BY:	A.Bhatnagar	APPROVED BY:	D.Sarkar
DESIGNED	R.Mittal	SCALE	H=1:1000 V=1:100
SURVEYED	S.Sharma	DATE	06-01-2005

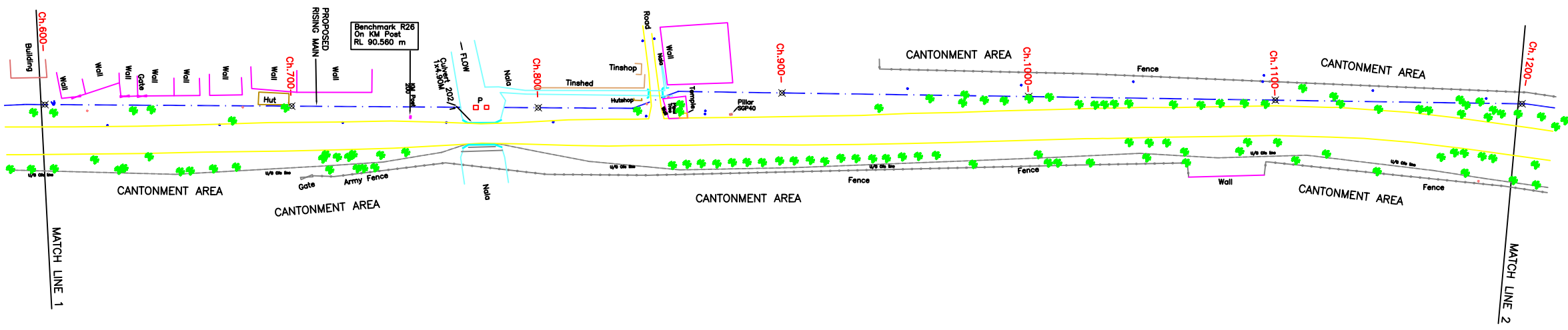
JICA JAPAN INTERNATIONAL COOPERATION AGENCY
 CONSULTANTS:
 TOKYO ENGINEERING CONSULTANTS CO., LTD.
 CTI ENGINEERING INTERNATIONAL CO., LTD.
 STUP CONSULTANTS LTD.

PROJECT:
 THE STUDY ON WATER QUALITY MANAGEMENT PLAN FOR GANGA RIVER IN THE REPUBLIC OF INDIA
 FEASIBILITY STUDY FOR ALLAHABAD CITY

CORRIDOR: District : D
 Mumfordganj PS to Rajapur STP
 Node : 18 to T

SHEET CONTENTS: PLAN AND PROFILE (1/5)
 (Proposed Rising Main)
 (Ch. 00 - 600)

TO MUMFORDGANJ PS 10 D-(1100Ø PSC PIPE) TO RAJAPUR STP



PLAN

- NOTES:**
- GTS BENCH MARK ON YAMUNA BRIDGE LOCATED ON STONE AT EAST END OF 9th PIER FROM SOUTH OF YAMUNA BRIDGE 292.075 Ft. (89.024 m.)
 - ALL LEVELS ARE IN METERS
 - AIR VALVES /SCOUR VALVES /ISOLATION VALVES HAVE NOT BEEN SHOWN IN PLAN FOR CLARITY.

LEGEND

PROPOSED SEWER LINE	
PROPOSED RISING MAIN	
ROAD EDGE	
UNDERGROUND LINES	
CULVERT/BRIDGE	
HANDPUMP	
ELECTRIC POLE	
ELECTRIC LINE	
TELEPHONE POLE	
TELEPHONE LINE	
TRANSFORMER	
OFC PILLAR	
KILOMETER POST	
TREE	
HECTOMETER POST	
LAMP POST	
RAILWAY LINE	
NALA	
WATER MAIN	
EXISTING SEWER	
TRENCHLESS TECHNOLOGY	
NALA CROSSING	
RAILWAY LINE CROSSING	
AIR VALVE	
SCOUR VALVE	
ISOLATION VALVE	

REFERENCE DRAWING:

INST.				
ELEC.				
MECH.				
STRU.				
CIVIL				
REV NO.	0	1	2	3

REV.	DESCRIPTION OF REVISIONS	DATE	CHECKED

CHECKED BY: A.Bhatnagar	APPROVED BY: D.Sarkar
DESIGNED R.Mittal	SCALE H=1:1000 V=1:100
DRAWN S.Sharma	DATE 06-01-2005

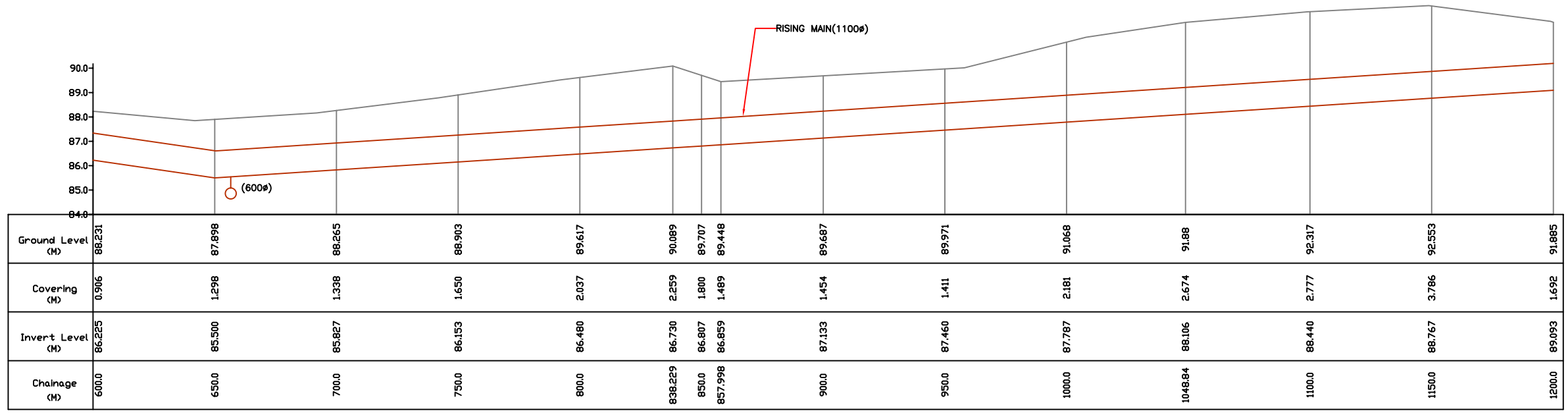
JICA JAPAN INTERNATIONAL COOPERATION AGENCY
 CONSULTANTS:
 TOKYO ENGINEERING CONSULTANTS CO., LTD.
 CTI ENGINEERING INTERNATIONAL CO., LTD.
 STUP CONSULTANTS LTD.

PROJECT:
 THE STUDY ON WATER QUALITY MANAGEMENT PLAN FOR GANGA RIVER IN THE REPUBLIC OF INDIA
 FEASIBILITY STUDY FOR ALLAHABAD CITY

CORRIDOR: District : D
 Mumfordganj PS to Rajapur STP
 Node : 18 to T

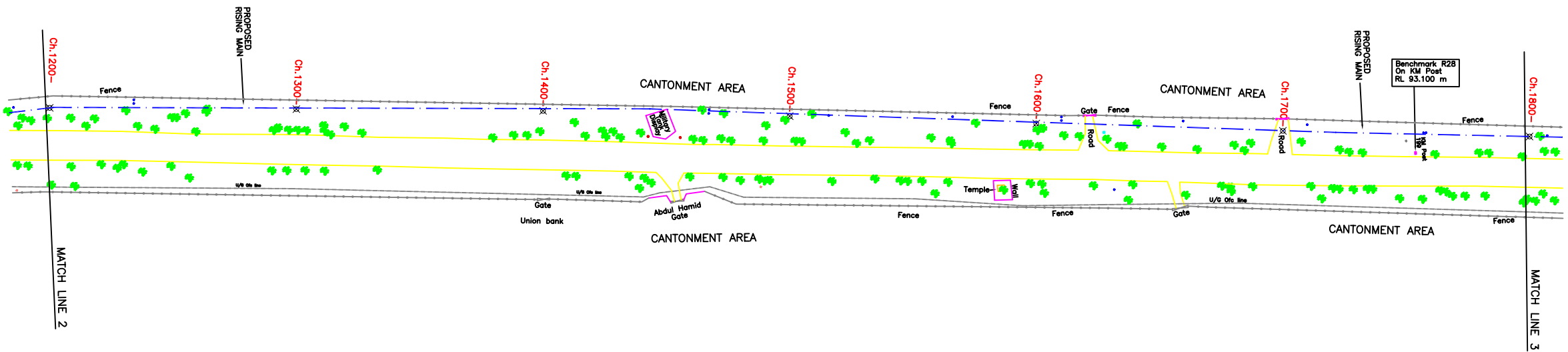
SHEET CONTENTS: PLAN AND PROFILE (2/5)
 (Proposed Rising Main)
 (Ch. 600 - 1200)

DRAWING NO. ALD-RM-D (MPS-RSTP)-2	SHT. NO. 64
--------------------------------------	----------------

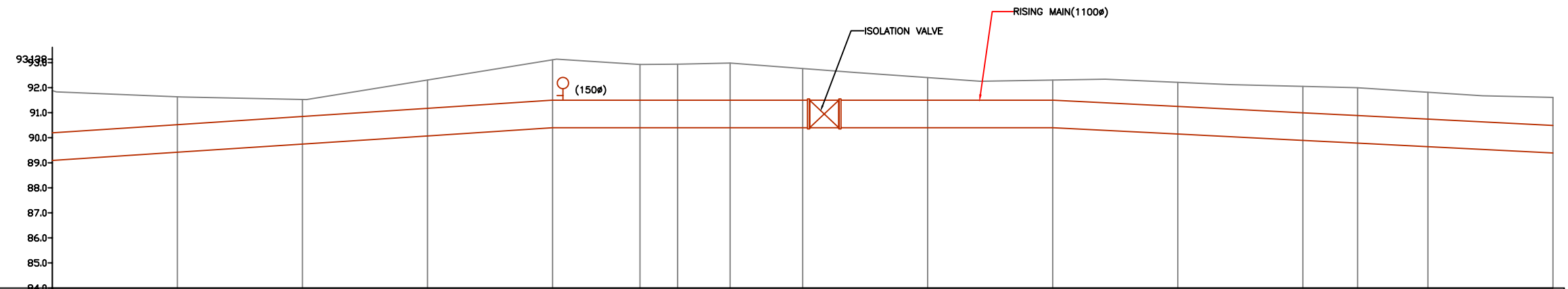


L-SECTION

TO MUMFORDGANJ PS 10 D-(1100Ø PSC PIPE) TO RAJAPUR STP



PLAN



Ground Level (M)	91.865	91.637	91.526	92.305	93.112	92.926	92.938	92.98	92.762	92.4	92.302	92.212	92.051	91.994	91.815	91.605
Covering (M)	1.692	1.117	0.679	1.132	1.612	1.426	1.438	1.480	1.262	0.900	0.802	0.965	1.056	1.110	1.073	1.115
Invert Level (M)	89.093	89.420	89.747	90.073	90.400	90.400	90.400	90.400	90.400	90.400	90.400	90.147	89.895	89.784	89.642	89.390
Chainage (M)	1200.0	1250.0	1300.0	1350.0	1400.0	1434.986	1450.0	1470.991	1500.0	1550.0	1600.0	1650.0	1700.0	1721.879	1750.0	1800.0

L-SECTION

- NOTES:**
- GTS BENCH MARK ON YAMUNA BRIDGE LOCATED ON STONE AT EAST END OF 9th PIER FROM SOUTH OF YAMUNA BRIDGE 292.075 Ft. (89.024 m.)
 - ALL LEVELS ARE IN METERS
 - AIR VALVES /SCOUR VALVES /ISOLATION VALVES HAVE NOT BEEN SHOWN IN PLAN FOR CLARITY.

LEGEND

PROPOSED SEWER LINE	
PROPOSED RISING MAIN	
ROAD EDGE	
UNDERGROUND LINES	
CULVERT/BRIDGE	
HANDPUMP	
ELECTRIC POLE	
ELECTRIC LINE	
TELEPHONE POLE	
TELEPHONE LINE	
TRANSFORMER	
OFC PILLAR	
KILOMETER POST	
TREE	
HECTOMETER POST	
LAMP POST	
RAILWAY LINE	
NALA	
WATER MAIN	
EXISTING SEWER	
TRENCHLESS TECHNOLOGY	
NALA CROSSING	
RAILWAY LINE CROSSING	
AIR VALVE	
SCOUR VALVE	
ISOLATION VALVE	

REFERENCE DRAWING:

INST.					
ELEC.					
MECH.					
STRU.					
CIVIL					
REV NO.	0	1	2	3	4

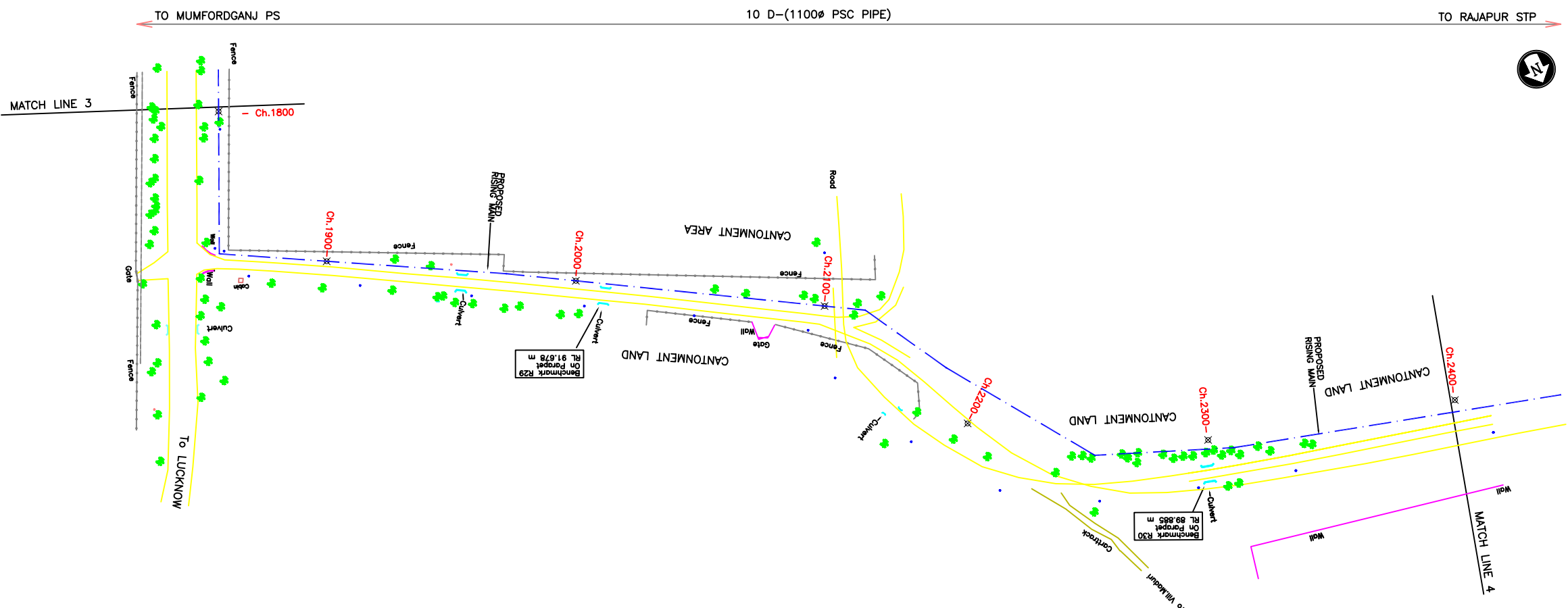
CHECKED BY:	A.Bhatnagar	CHECK	APPROVED BY:	D.Sarkar
DRAWN	Surendra		APPROVE	
DESIGNED	R.Mittal	SCALE	H=1:1000	V=1:100
SURVEYED	S.Sharma	DATE	06-01-2005	

JICA JAPAN INTERNATIONAL COOPERATION AGENCY
 CONSULTANTS:
 TOKYO ENGINEERING CONSULTANTS CO., LTD.
 CTI ENGINEERING INTERNATIONAL CO., LTD.
 STUP CONSULTANTS LTD.

PROJECT:
 THE STUDY ON WATER QUALITY MANAGEMENT PLAN FOR GANGA RIVER IN THE REPUBLIC OF INDIA
 FEASIBILITY STUDY FOR ALLAHABAD CITY

CORRIDOR: District : D
 Mumfordganj PS to Rajapur STP
 Node : 18 to T

SHEET CONTENTS: PLAN AND PROFILE (3/5)
 (Proposed Rising Main)
 (Ch. 1200 - 1800)



PLAN

- NOTES:**
- 1) GTS BENCH MARK ON YAMUNA BRIDGE LOCATED ON STONE AT EAST END OF 9th PIER FROM SOUTH OF YAMUNA BRIDGE 292.075 FT. (89.024 m.)
 - 2) ALL LEVELS ARE IN METERS
 - 3) AIR VALVES /SCOUR VALVES /ISOLATION VALVES HAVE NOT BEEN SHOWN IN PLAN FOR CLARITY.

LEGEND

PROPOSED SEWER LINE	
PROPOSED RISING MAIN	
ROAD EDGE	
UNDERGROUND LINES	
CULVERT/BRIDGE	
HANDPUMP	
ELECTRIC POLE	
ELECTRIC LINE	
TELEPHONE POLE	
TELEPHONE LINE	
TRANSFORMER	
OFC PILLAR	
KILOMETER POST	
TREE	
HECTOMETER POST	
LAMP POST	
RAILWAY LINE	
NALA	
WATER MAIN	
EXISTING SEWER	
TRENCHLESS TECHNOLOGY	
NALA CROSSING	
RAILWAY LINE CROSSING	
AIR VALVE	
SCOUR VALVE	
ISOLATION VALVE	

REFERENCE DRAWING:

INST.					
ELEC.					
MECH.					
STRU.					
CIVIL					
REV NO.	0	1	2	3	4

REV.	DESCRIPTION OF REVISIONS	DATE	CHECKED

CHECKED BY:	A.Bhatnagar	CHECK	APPROVED BY:	D.Sarkar	APPROVE
DRAWN	Surendra		DESIGNED	R.Mittal	SCALE
SURVEYED	S.Sharma	DATE			06-01-2005

JICA JAPAN INTERNATIONAL COOPERATION AGENCY

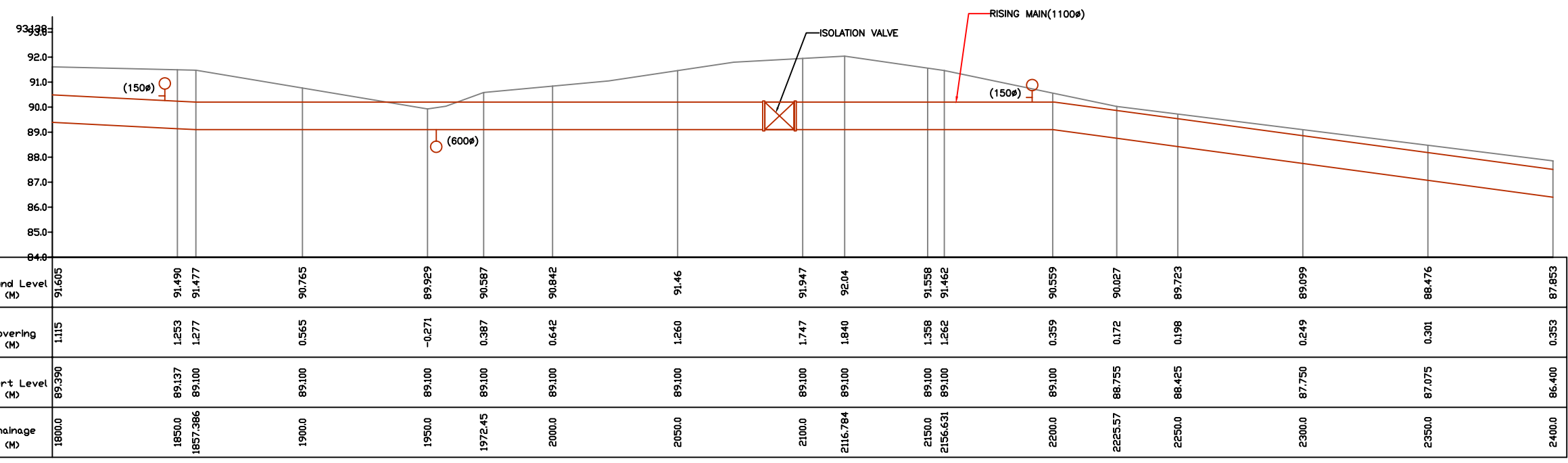
CONSULTANTS:

 TOKYO ENGINEERING CONSULTANTS CO., LTD.
 CTI ENGINEERING INTERNATIONAL CO., LTD.
 STUP CONSULTANTS LTD.

PROJECT:
 THE STUDY ON WATER QUALITY MANAGEMENT PLAN FOR GANGA RIVER IN THE REPUBLIC OF INDIA
 FEASIBILITY STUDY FOR ALLAHABAD CITY

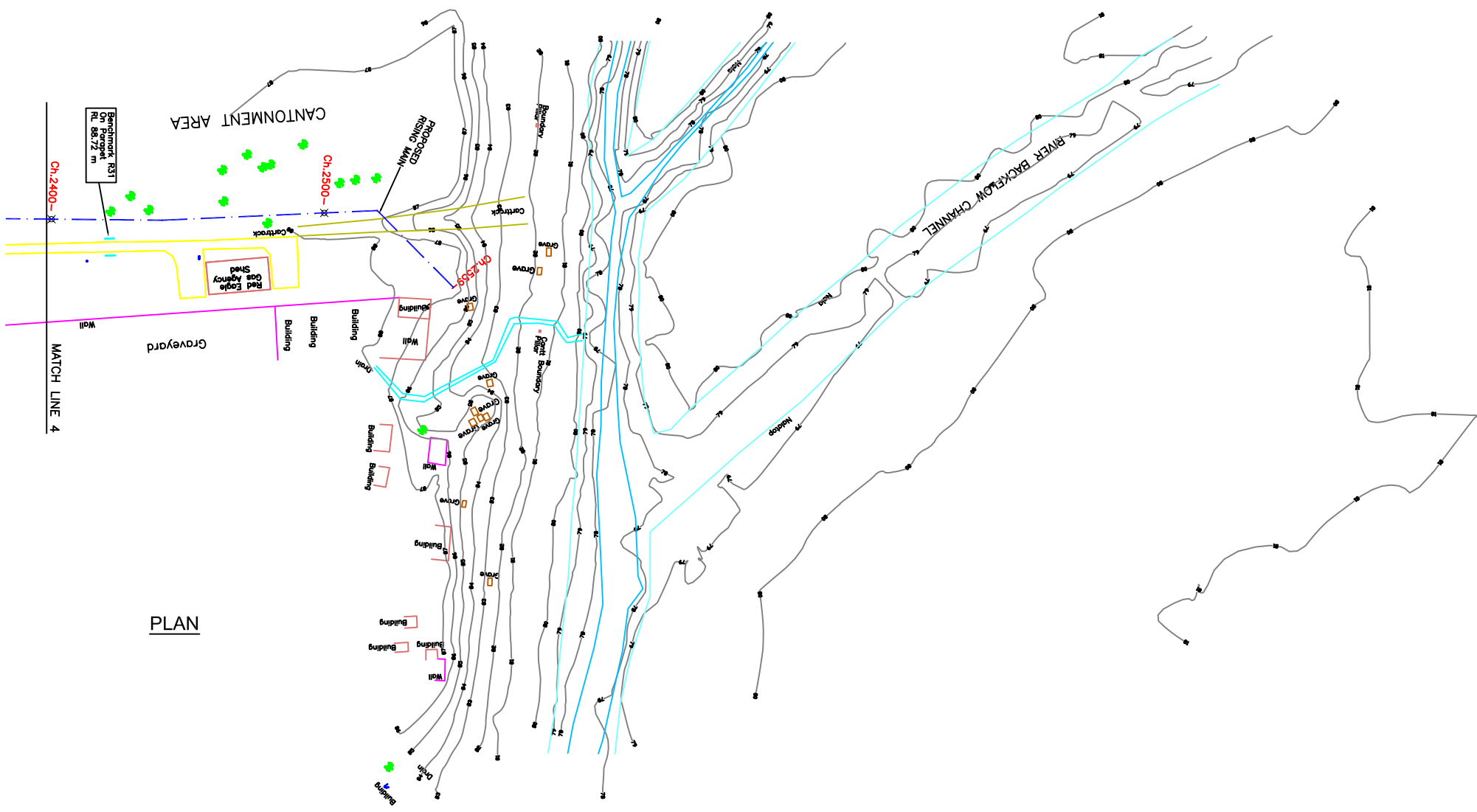
CORRIDOR: District : D
 Mumfordganj PS to Rajapur STP
 Node : 18 to T

SHEET CONTENTS: PLAN AND PROFILE (4/5)
 (Proposed Rising Main)
 (Ch. 1800 - 2400)

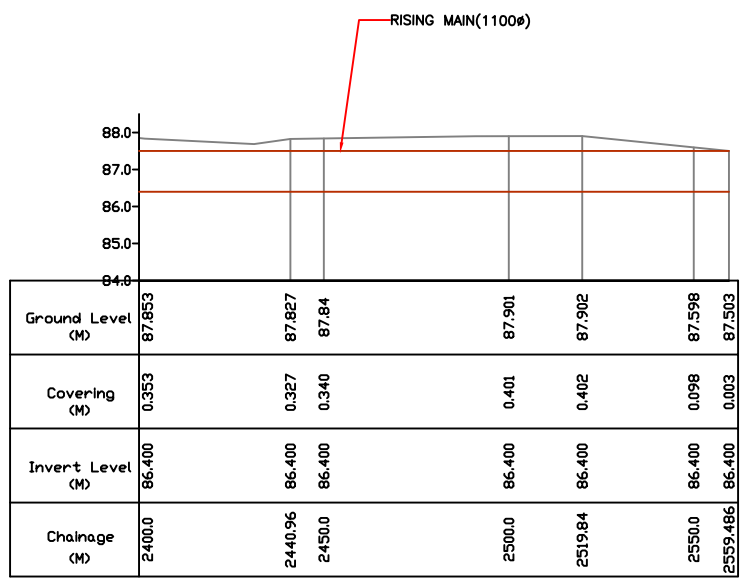


L-SECTION

TO MUMFORDGANJ PS 10 D-(1100# PSC PIPE) TO RAJAPUR STP



PLAN



L-SECTION

- NOTES:**
- GTS BENCH MARK ON YAMUNA BRIDGE LOCATED ON STONE AT EAST END OF 9th PIER FROM SOUTH OF YAMUNA BRIDGE 292.075 FT. (89.024 m.)
 - ALL LEVELS ARE IN METERS
 - AIR VALVES /SCOUR VALVES /ISOLATION VALVES HAVE NOT BEEN SHOWN IN PLAN FOR CLARITY.

LEGEND

PROPOSED SEWER LINE	
PROPOSED RISING MAIN	
ROAD EDGE	
UNDERGROUND LINES	
CULVERT/BRIDGE	
HANDPUMP	
ELECTRIC POLE	
ELECTRIC LINE	
TELEPHONE POLE	
TELEPHONE LINE	
TRANSFORMER	
OFC PILLAR	
KILOMETER POST	
TREE	
HECTOMETER POST	
LAMP POST	
RAILWAY LINE	
NALA	
WATER MAIN	
EXISTING SEWER	
TRENCHLESS TECHNOLOGY	
NALA CROSSING	
RAILWAY LINE CROSSING	
AIR VALVE	
SCOUR VALVE	
ISOLATION VALVE	

REFERENCE DRAWING:

INST.					
ELEC.					
MECH.					
STRU.					
CIVIL					
REV NO.	0	1	2	3	4

REV.	DESCRIPTION OF REVISIONS	DATE	CHECKED

CHECKED BY: A.Bhatnagar	APPROVED BY: D.Sarkar
DRAWN Surendra	APPROVE
DESIGNED R.Mittal	SCALE H=1:1000 V=1:100
SURVEYED S.Sharma	DATE 06-01-2005

JICA JAPAN INTERNATIONAL COOPERATION AGENCY

CONSULTANTS:
 TOKYO ENGINEERING CONSULTANTS CO., LTD.
 CTI ENGINEERING INTERNATIONAL CO., LTD.
 STUP CONSULTANTS LTD.

PROJECT:
 THE STUDY ON WATER QUALITY MANAGEMENT PLAN FOR GANGA RIVER IN THE REPUBLIC OF INDIA
 FEASIBILITY STUDY FOR ALLAHABAD CITY

CORRIDOR: District : D
 Mumfordganj PS to Rajapur STP
 Node : 18 to T

SHEET CONTENTS: PLAN AND PROFILE (5/5)
 (Proposed Rising Main)
 (Ch. 2400 - 2559)

DRAWING NO. ALD-RM-D (MPS-RSTP)-5	SHT. NO. 67
--------------------------------------	----------------

