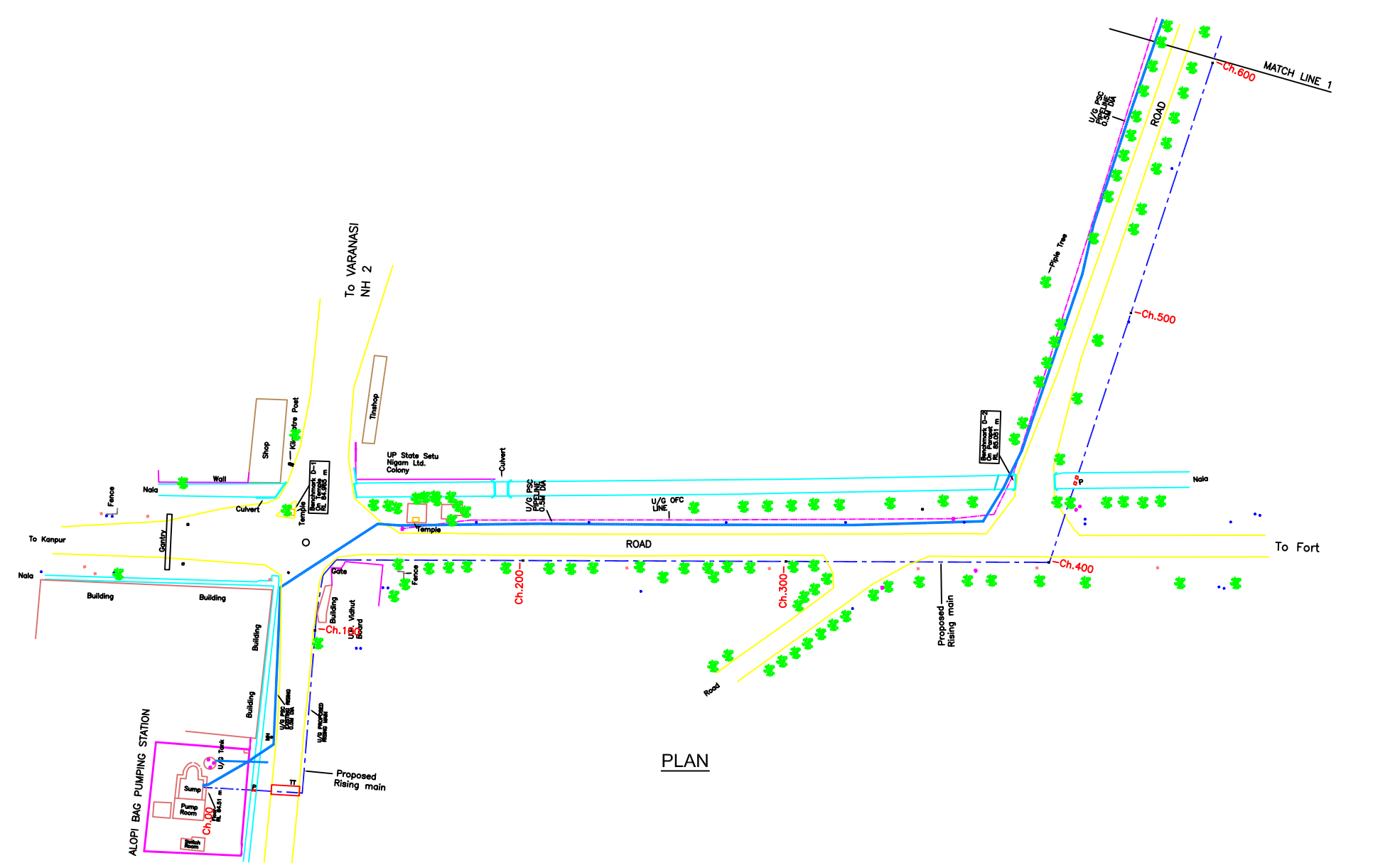
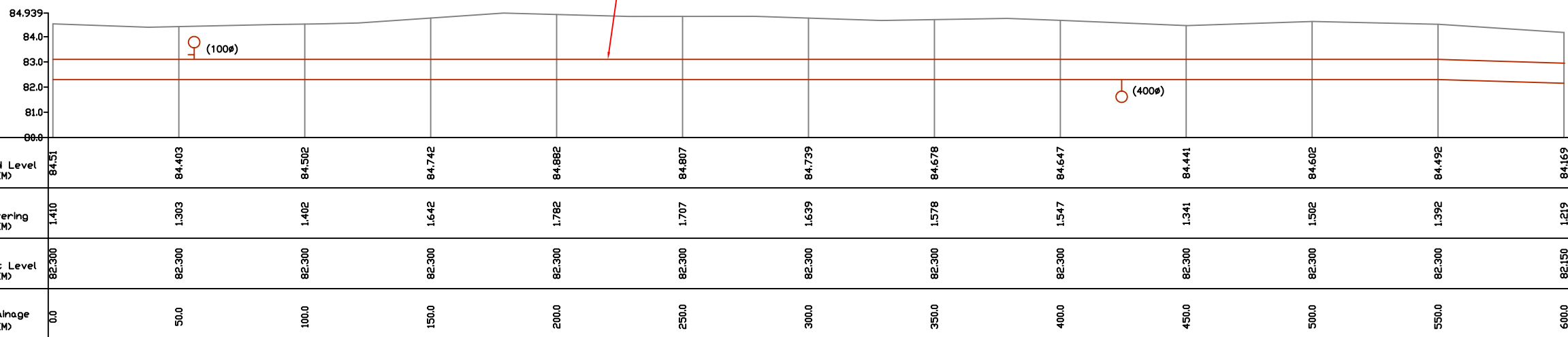


TO MORIGATE PS 8-D (800 Ø PSC PIPE) TO ALOPIBAGH PS



PLAN



L-SECTION

- NOTES:**
- GTS BENCH MARK ON YAMUNA BRIDGE LOCATED ON STONE AT EAST END OF 9th PIER FROM SOUTH OF YAMUNA BRIDGE 292.075 Ft. (89.024 m.)
  - ALL LEVELS ARE IN METERS
  - AIR VALVES /SCOUR VALVES /ISOLATION VALVES HAVE NOT BEEN SHOWN IN PLAN FOR CLARITY.

**LEGEND**

PROPOSED SEWER LINE	
PROPOSED RISING MAIN	
ROAD EDGE	
UNDERGROUND LINES	
CULVERT/BRIDGE	
HANDPUMP	
ELECTRIC POLE	
ELECTRIC LINE	
TELEPHONE POLE	
TELEPHONE LINE	
TRANSFORMER	
OFC PILLAR	
KILOMETER POST	
HECTOMETER POST	
LAMP POST	
RAILWAY LINE	
NALA	
WATER MAIN	
EXISTING SEWER	
TRENCHLESS TECHNOLOGY	
NALA CROSSING	
RAILWAY LINE CROSSING	
AIR VALVE	
SCOUR VALVE	
ISOLATION VALVE	

**REFERENCE DRAWING:**

INST.					
ELEC.					
MECH.					
STRU.					
CIVIL					
REV NO.	0	1	2	3	4

REV.	DESCRIPTION OF REVISIONS	DATE	CHECKED

CHECKED BY:	A.Bhatnagar	APPROVED BY:	D.Sarkar
DRAWN	Surendra	SCALE	H=1:1000 V=1:100
DESIGNED	R.Mittal	DATE	06-01-2005
SURVEYED	S.Sharma		

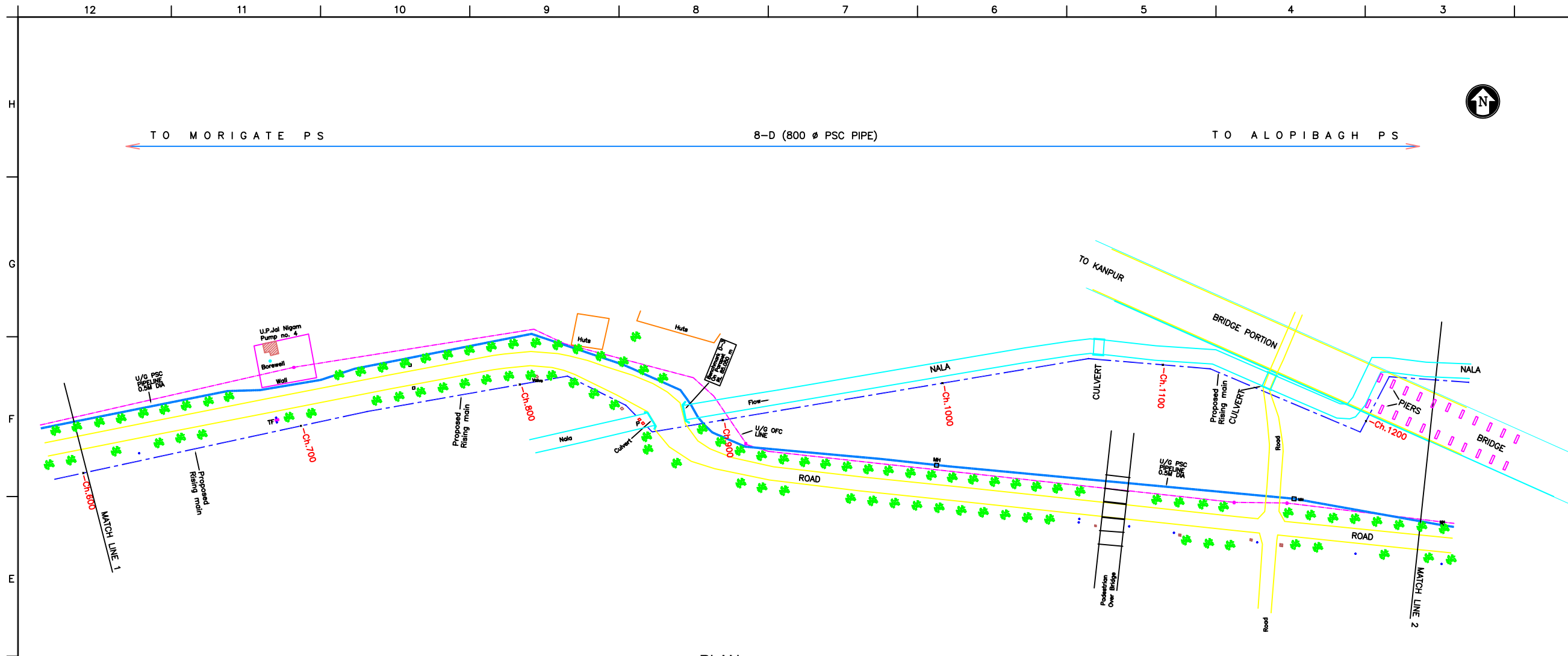
**JICA** JAPAN INTERNATIONAL COOPERATION AGENCY  
 CONSULTANTS:  
 TOKYO ENGINEERING CONSULTANTS CO., LTD.  
 CTI ENGINEERING INTERNATIONAL CO., LTD.  
 STUP CONSULTANTS LTD.

**PROJECT:**  
 THE STUDY ON WATER QUALITY MANAGEMENT PLAN FOR GANGA RIVER IN THE REPUBLIC OF INDIA  
 FEASIBILITY STUDY FOR ALLAHABAD CITY

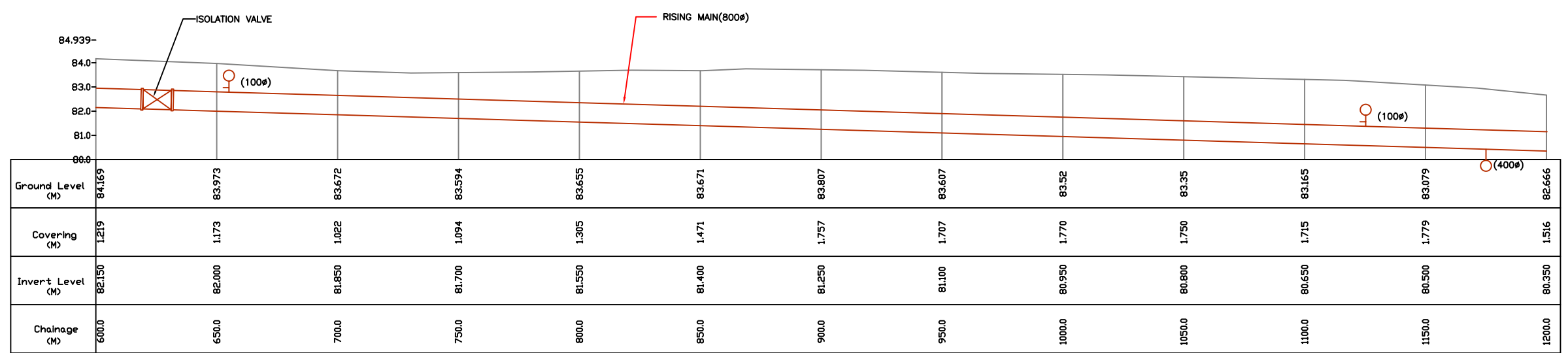
**CORRIDOR:** District : D  
 Alopibag PS to Morigate PS  
 Node : APS-11-8-17-MPS

**SHEET CONTENTS:**  
 PLAN AND PROFILE (1/3)  
 (Proposed Rising Main)  
 (Ch. 00 - 600)

DRAWING NO.	ALD-RM-D (APS-MGPS)-1	SHT. NO.	54
-------------	-----------------------	----------	----



PLAN



L-SECTION

- NOTES:**
- GTS BENCH MARK ON YAMUNA BRIDGE LOCATED ON STONE AT EAST END OF 9th PIER FROM SOUTH OF YAMUNA BRIDGE 292.075 Ft. (89.024 m.)
  - ALL LEVELS ARE IN METERS
  - AIR VALVES /SCOUR VALVES /ISOLATION VALVES HAVE NOT BEEN SHOWN IN PLAN FOR CLARITY.

**LEGEND**

PROPOSED SEWER LINE	
PROPOSED RISING MAIN	
ROAD EDGE	
UNDERGROUND LINES	
CULVERT/BRIDGE	
HANDPUMP	
ELECTRIC POLE	
ELECTRIC LINE	
TELEPHONE POLE	
TELEPHONE LINE	
TRANSFORMER	
OFC PILLAR	
KILOMETER POST	
TREE	
HECTOMETER POST	
LAMP POST	
RAILWAY LINE	
NALA	
WATER MAIN	
EXISTING SEWER	
TRENCHLESS TECHNOLOGY	TT
NALA CROSSING	
RAILWAY LINE CROSSING	
AIR VALVE	
SCOUR VALVE	
ISOLATION VALVE	

**REFERENCE DRAWING:**

INST.					
ELEC.					
MECH.					
STRU.					
CIVIL					
REV NO.	0	1	2	3	4

REV.	DESCRIPTION OF REVISIONS	DATE	CHECKED
CHECKED BY:	A.Bhatnagar	APPROVED BY:	D.Sarkar
DRAWN	Surendra	CHECK	APPROVE
DESIGNED	R.Mittal	SCALE	H=1:1000 V=1:100
SURVEYED	S.Sharma	DATE	06-01-2005

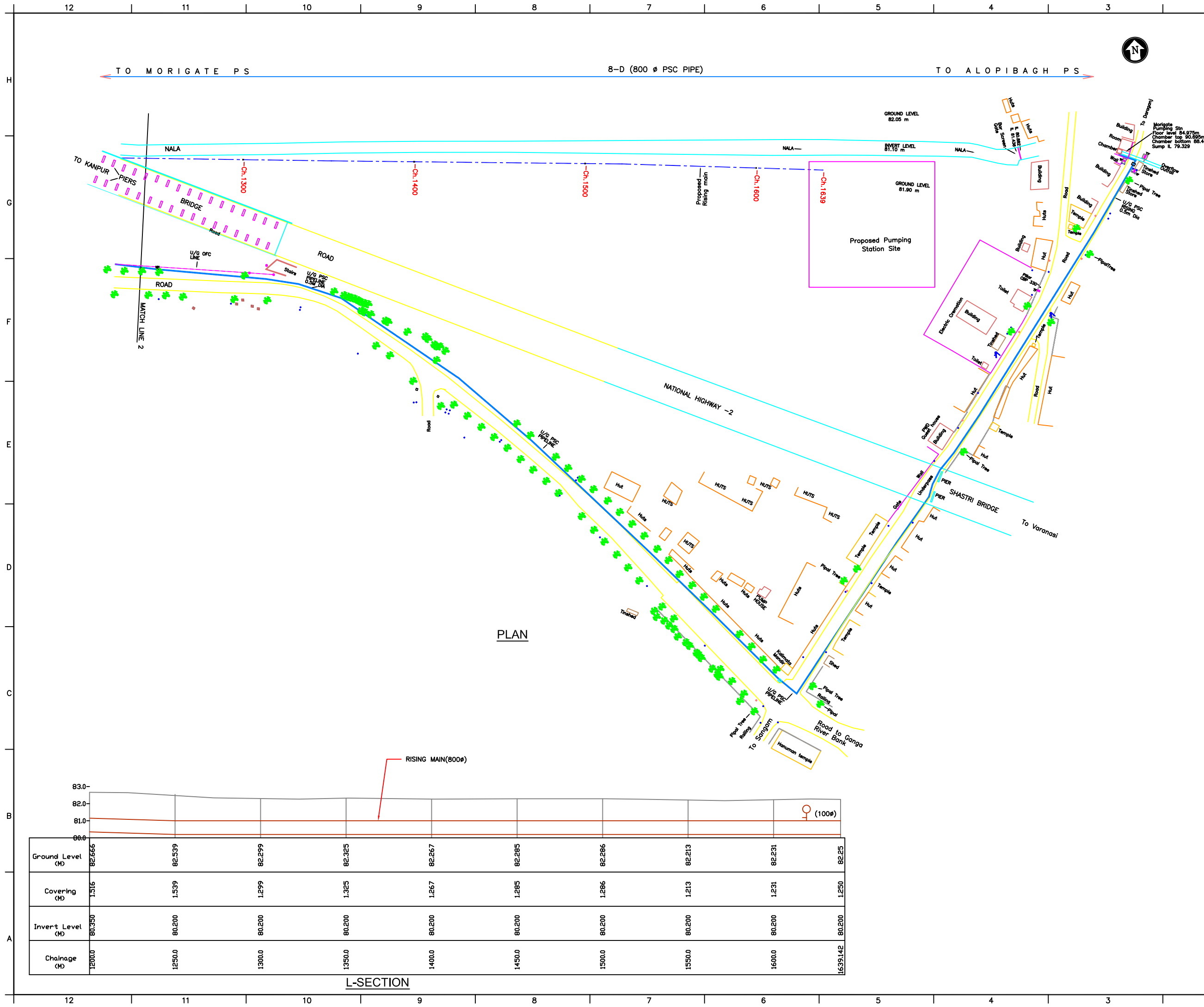
**JICA** JAPAN INTERNATIONAL COOPERATION AGENCY  
 CONSULTANTS:

**PROJECT:**  
 THE STUDY ON WATER QUALITY MANAGEMENT PLAN FOR GANGA RIVER IN THE REPUBLIC OF INDIA  
 FEASIBILITY STUDY FOR ALLAHABAD CITY

**CORRIDOR:** District : D  
 Alopibag PS to Morigate PS  
 Node : APS-11-8-17-MPS

**SHEET CONTENTS:**  
 PLAN AND PROFILE (2/3)  
 (Proposed Rising Main)  
 (Ch. 600 - 1200)

**DRAWING NO.** ALD-RM-D (APS-MGPS)-2 **SHT. NO.** 55



- NOTES:**
- 1) GTS BENCH MARK ON YAMUNA BRIDGE LOCATED ON STONE AT EAST END OF 9th PIER FROM SOUTH OF YAMUNA BRIDGE 292.075 Ft. (89.024 m.)
  - 2) ALL LEVELS ARE IN METERS
  - 3) AIR VALVES /SCOUR VALVES /ISOLATION VALVES HAVE NOT BEEN SHOWN IN PLAN FOR CLARITY.

**LEGEND**

PROPOSED SEWER LINE	
PROPOSED RISING MAIN	
ROAD EDGE	
UNDERGROUND LINES	
CULVERT/BRIDGE	
HANDPUMP	
ELECTRIC POLE	
ELECTRIC LINE	
TELEPHONE POLE	
TELEPHONE LINE	
TRANSFORMER	
OFC PILLAR	
KILOMETER POST	
TREE	
HECTOMETER POST	
LAMP POST	
RAILWAY LINE	
NALA	
WATER MAIN	
EXISTING SEWER	
TRENCHLESS TECHNOLOGY	TT
NALA CROSSING	
RAILWAY LINE CROSSING	
AIR VALVE	
SCOUR VALVE	
ISOLATION VALVE	

**REFERENCE DRAWING:**

INST.					
ELEC.					
MECH.					
STRU.					
CIVIL					
REV NO.	0	1	2	3	4

REV.	DESCRIPTION OF REVISIONS	DATE	CHECKED
CHECKED BY: A.Bhatnagar			
APPROVED BY: D.Sarkar			
DRAWN	Surendra	APPROVE	
DESIGNED	R.Mittal	SCALE	H=1:1000 V=1:100
SURVEYED	S.Sharma	DATE	06-01-2005

**JICA** JAPAN INTERNATIONAL COOPERATION AGENCY  
 CONSULTANTS:  
 TOKYO ENGINEERING CONSULTANTS CO., LTD.  
 CTI ENGINEERING INTERNATIONAL CO., LTD.  
 STUP CONSULTANTS LTD.

**PROJECT:**  
 THE STUDY ON WATER QUALITY MANAGEMENT PLAN FOR GANGA RIVER IN THE REPUBLIC OF INDIA  
 FEASIBILITY STUDY FOR ALLAHABAD CITY

**CORRIDOR:** District : D  
 Alopibag PS to Morigate PS  
 Node : APS-11-8-17-MPS

**SHEET CONTENTS:**  
 PLAN AND PROFILE (3/3)  
 (Proposed Rising Main)  
 (Ch. 1200 - 1639)

DRAWING NO.	SHT. NO.
ALD-RM-D (APS-MGPs)-3	56

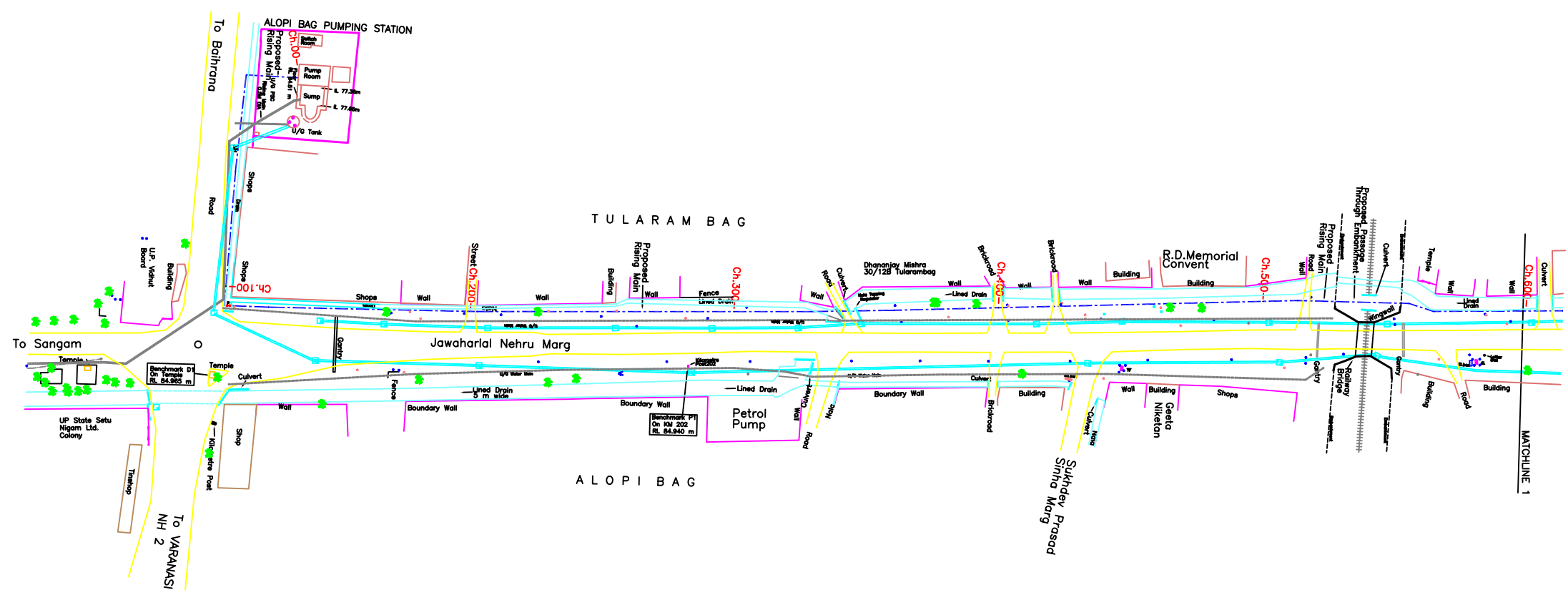
TO ALOPIBAGH PS 9 D-(1000 Ø PSC PIPE) TO MUMFORDGANG PS



- NOTES:**
- GTS BENCH MARK ON YAMUNA BRIDGE LOCATED ON STONE AT EAST END OF 9th PIER FROM SOUTH OF YAMUNA BRIDGE 292.075 Ft. (89.024 m.)
  - ALL LEVELS ARE IN METERS
  - AIR VALVES /SCOUR VALVES /ISOLATION VALVES HAVE NOT BEEN SHOWN IN PLAN FOR CLARITY.

**LEGEND**

PROPOSED SEWER LINE	
PROPOSED RISING MAIN	
ROAD EDGE	
UNDERGROUND LINES	
CULVERT/BRIDGE	
HANDPUMP	
ELECTRIC POLE	
ELECTRIC LINE	
TELEPHONE POLE	
TELEPHONE LINE	
TRANSFORMER	
OFC PILLAR	
KILOMETER POST	
HECTOMETER POST	
LAMP POST	
RAILWAY LINE	
NALA	
WATER MAIN	
EXISTING SEWER	
TRENCHLESS TECHNOLOGY	
NALA CROSSING	
RAILWAY LINE CROSSING	
AIR VALVE	
SCOUR VALVE	
ISOLATION VALVE	



PLAN

**REFERENCE DRAWING:**

INST.					
ELEC.					
MECH.					
STRU.					
CIVIL					
REV NO.	0	1	2	3	4

REV.	DESCRIPTION OF REVISIONS	DATE	CHECKED

CHECKED BY: A.Bhatnagar	CHECK	APPROVED BY: D.Sarkar	APPROVE
DRAWN M.Pahuja	DESIGNED R.Mittal	SCALE H=1:1000 V=1:100	SURVEYED S.Sharma
DATE		05-02-2005	

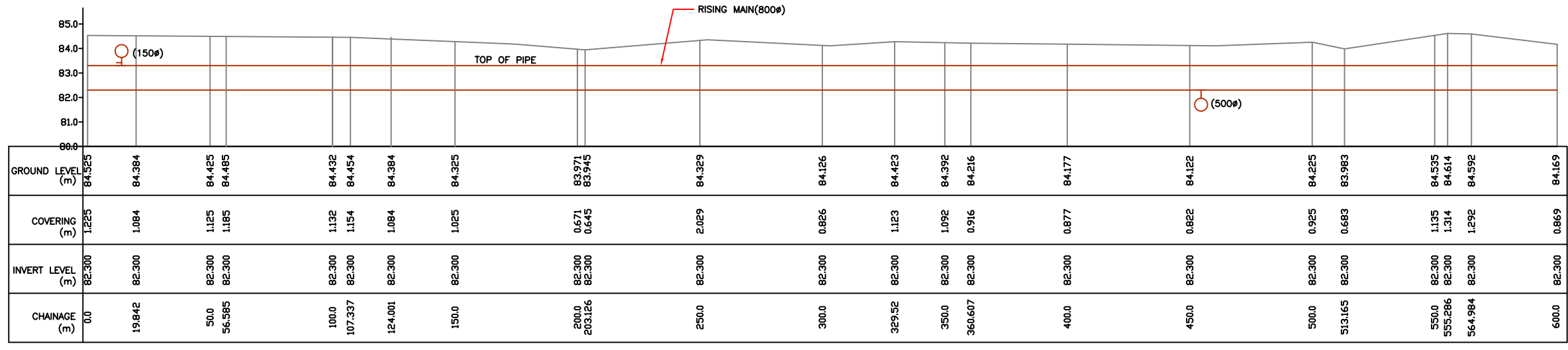
**JICA** JAPAN INTERNATIONAL COOPERATION AGENCY  
 CONSULTANTS:  
 TOKYO ENGINEERING CONSULTANTS CO., LTD.  
 CTI ENGINEERING INTERNATIONAL CO., LTD.  
 STUP CONSULTANTS LTD.

**PROJECT:**  
 THE STUDY ON WATER QUALITY MANAGEMENT PLAN FOR GANGA RIVER IN THE REPUBLIC OF INDIA  
 FEASIBILITY STUDY FOR ALLAHABAD CITY

**CORRIDOR:** District : D  
 Alopibag PS to Mumfordganj PS  
 Node : APS-11-9-17-MPS

**SHEET CONTENTS:**  
 PLAN AND PROFILE (1/6)  
 (Proposed Rising Main)  
 (Ch. 00 - 600)

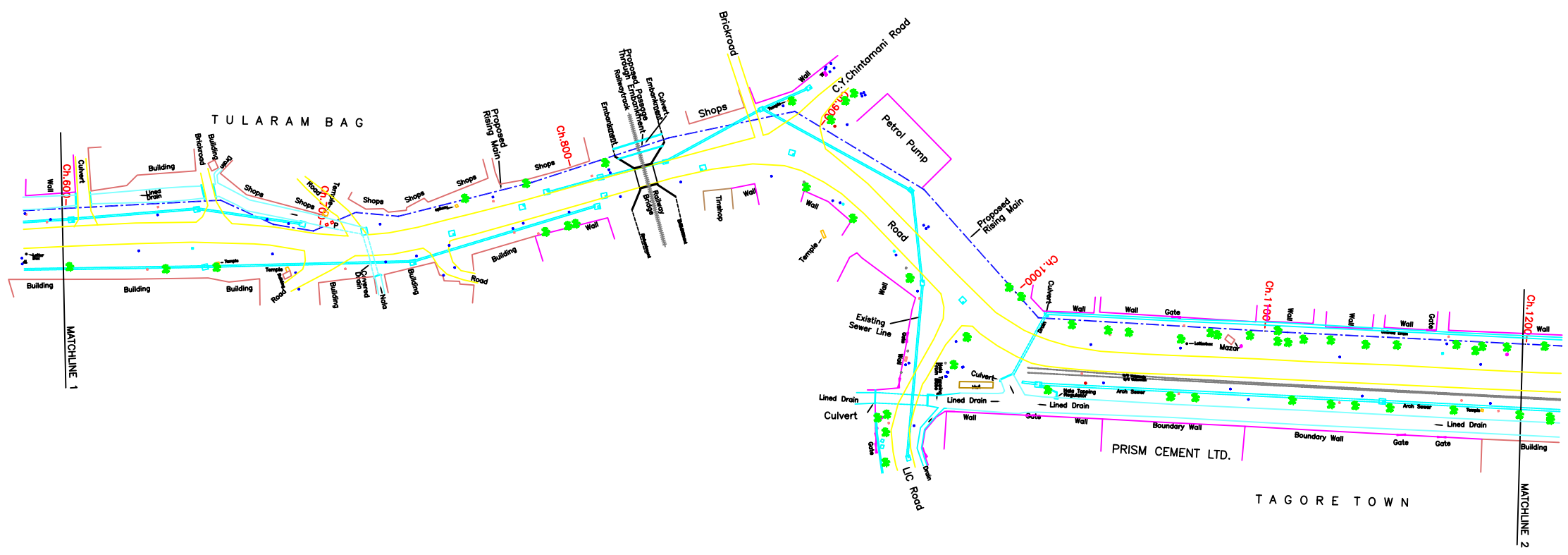
**DRAWING NO.** ALD-RM-D (APS-MPS)-1 **SHT. NO.** 57



L-SECTION

12 11 10 9 8 7 6 5 4 3 2 1

TO ALOPIBAGH PS 9 D-(1000 Ø PSC PIPE) TO MUMFORDGANG PS



PLAN

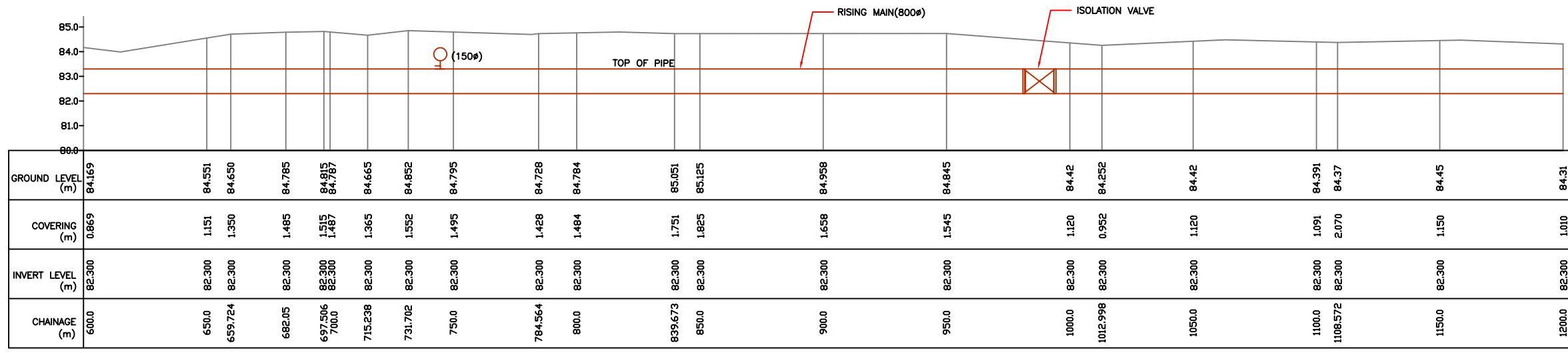
- NOTES:**
- 1) GTS BENCH MARK ON YAMUNA BRIDGE LOCATED ON STONE AT EAST END OF 9th PIER FROM SOUTH OF YAMUNA BRIDGE 292.075 Ft. (89.024 m.)
  - 2) ALL LEVELS ARE IN METERS
  - 3) AIR VALVES /SCOUR VALVES /ISOLATION VALVES HAVE NOT BEEN SHOWN IN PLAN FOR CLARITY.

**LEGEND**

PROPOSED SEWER LINE	
PROPOSED RISING MAIN	
ROAD EDGE	
UNDERGROUND LINES	
CULVERT/BRIDGE	
HANDPUMP	
ELECTRIC POLE	
ELECTRIC LINE	
TELEPHONE POLE	
TELEPHONE LINE	
TRANSFORMER	
OFC PILLAR	
KILOMETER POST	
HECTOMETER POST	
LAMP POST	
RAILWAY LINE	
NALA	
WATER MAIN	
EXISTING SEWER	
TRENCHLESS TECHNOLOGY	
NALA CROSSING	
RAILWAY LINE CROSSING	
AIR VALVE	
SCOUR VALVE	
ISOLATION VALVE	

**REFERENCE DRAWING:**

INST.					
ELEC.					
MECH.					
STRU.					
CIVIL					
REV NO.	0	1	2	3	4



L-SECTION

CHECKED BY: A.Bhatnagar	APPROVED BY: D.Sarkar
DESIGNED BY: R.Mittal	SCALE: H=1:1000 V=1:100
DRAWN BY: M.Pahuja	DATE: 05-02-2005
SURVEYED BY: S.Sharma	

**JICA** JAPAN INTERNATIONAL COOPERATION AGENCY

CONSULTANTS:  
 TOKYO ENGINEERING CONSULTANTS CO., LTD.  
 CTI ENGINEERING INTERNATIONAL CO., LTD.  
 STUP CONSULTANTS LTD.

**PROJECT:**  
THE STUDY ON WATER QUALITY MANAGEMENT PLAN FOR GANGA RIVER IN THE REPUBLIC OF INDIA  
FEASIBILITY STUDY FOR ALLAHABAD CITY

**CORRIDOR:** District : D  
Alopiabag PS to Mumfordganj PS  
Node : APS-11-8-17-MPS

**SHEET CONTENTS:**  
PLAN AND PROFILE (2/6)  
(Proposed Rising Main)  
(Ch. 600 - 1200)

**DRAWING NO.** ALD-RM-D (APS-MPS)-2 **SHT. NO.** 58

12 11 10 9 8 7 6 5 4 3 2 1

TO ALOPIBAGH PS 9 D-(1000 Ø PSC PIPE) TO MUMFORDGANG PS



- NOTES:**
- GTS BENCH MARK ON YAMUNA BRIDGE LOCATED ON STONE AT EAST END OF 9th PIER FROM SOUTH OF YAMUNA BRIDGE 292.075 Ft. (89.024 m.)
  - ALL LEVELS ARE IN METERS
  - AIR VALVES /SCOUR VALVES /ISOLATION VALVES HAVE NOT BEEN SHOWN IN PLAN FOR CLARITY.

**LEGEND**

PROPOSED SEWER LINE	
PROPOSED RISING MAIN	
ROAD EDGE	
UNDERGROUND LINES	
CULVERT/BRIDGE	
HANDPUMP	
ELECTRIC POLE	
ELECTRIC LINE	
TELEPHONE POLE	
TELEPHONE LINE	
TRANSFORMER	
OFC PILLAR	
KILOMETER POST	
TREE	
HECTOMETER POST	
LAMP POST	
RAILWAY LINE	
NALA	
WATER MAIN	
EXISTING SEWER	
TRENCHLESS TECHNOLOGY	
NALA CROSSING	
RAILWAY LINE CROSSING	
AIR VALVE	
SCOUR VALVE	
ISOLATION VALVE	

**REFERENCE DRAWING:**

INST.					
ELEC.					
MECH.					
STRU.					
CIVIL					
REV NO.	0	1	2	3	4

REV.	DESCRIPTION OF REVISIONS	DATE	CHECKED

CHECKED BY: A.Bhatnagar	APPROVED BY: D.Sarkar
DESIGNED R.Mittal	SCALE H=1:1000 V=1:100
DRAWN M.Pahuja	APPROVE
SURVEYED S.Sharma	DATE 05-02-2005

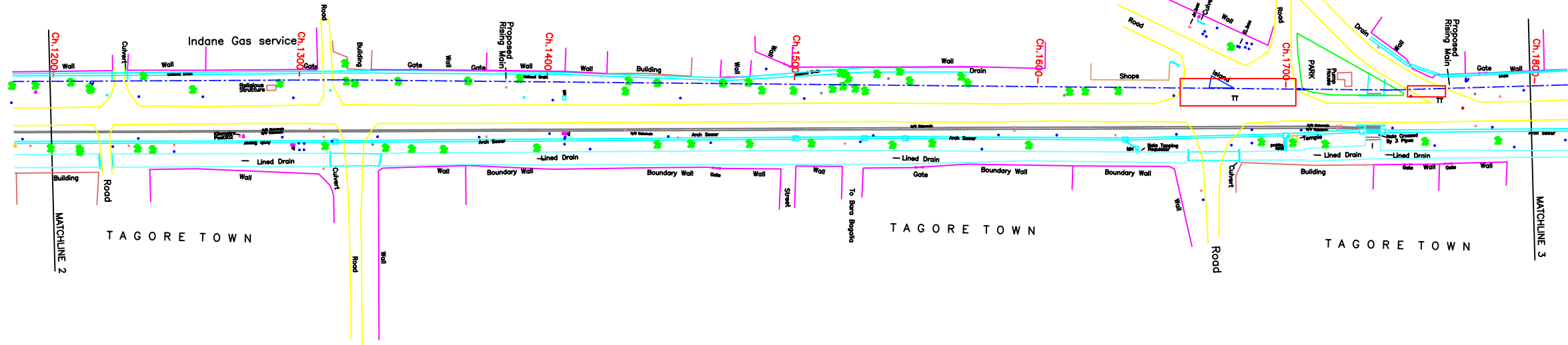
**JICA** JAPAN INTERNATIONAL COOPERATION AGENCY  
 CONSULTANTS:  
 TOKYO ENGINEERING CONSULTANTS CO., LTD.  
 CTI ENGINEERING INTERNATIONAL CO., LTD.  
 STUP CONSULTANTS LTD.

**PROJECT:**  
 THE STUDY ON WATER QUALITY MANAGEMENT PLAN FOR GANGA RIVER IN THE REPUBLIC OF INDIA  
 FEASIBILITY STUDY FOR ALLAHABAD CITY

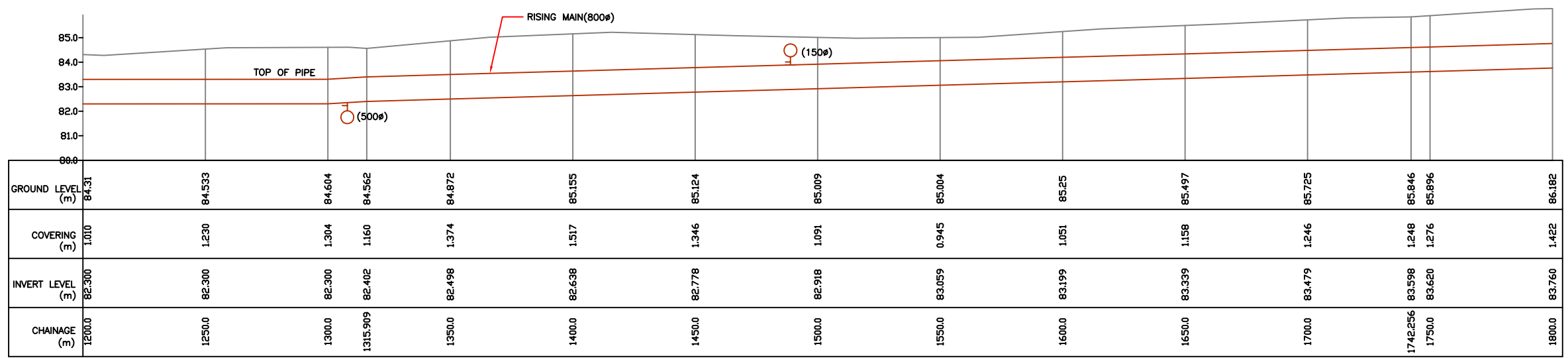
**CORRIDOR:** District : D  
 Alopibag PS to Mumfordganj PS  
 Node : APS-11-9-17-MPS

**SHEET CONTENTS:**  
 PLAN AND PROFILE (3/6)  
 (Proposed Rising Main)  
 (Ch. 1200 - 1800)

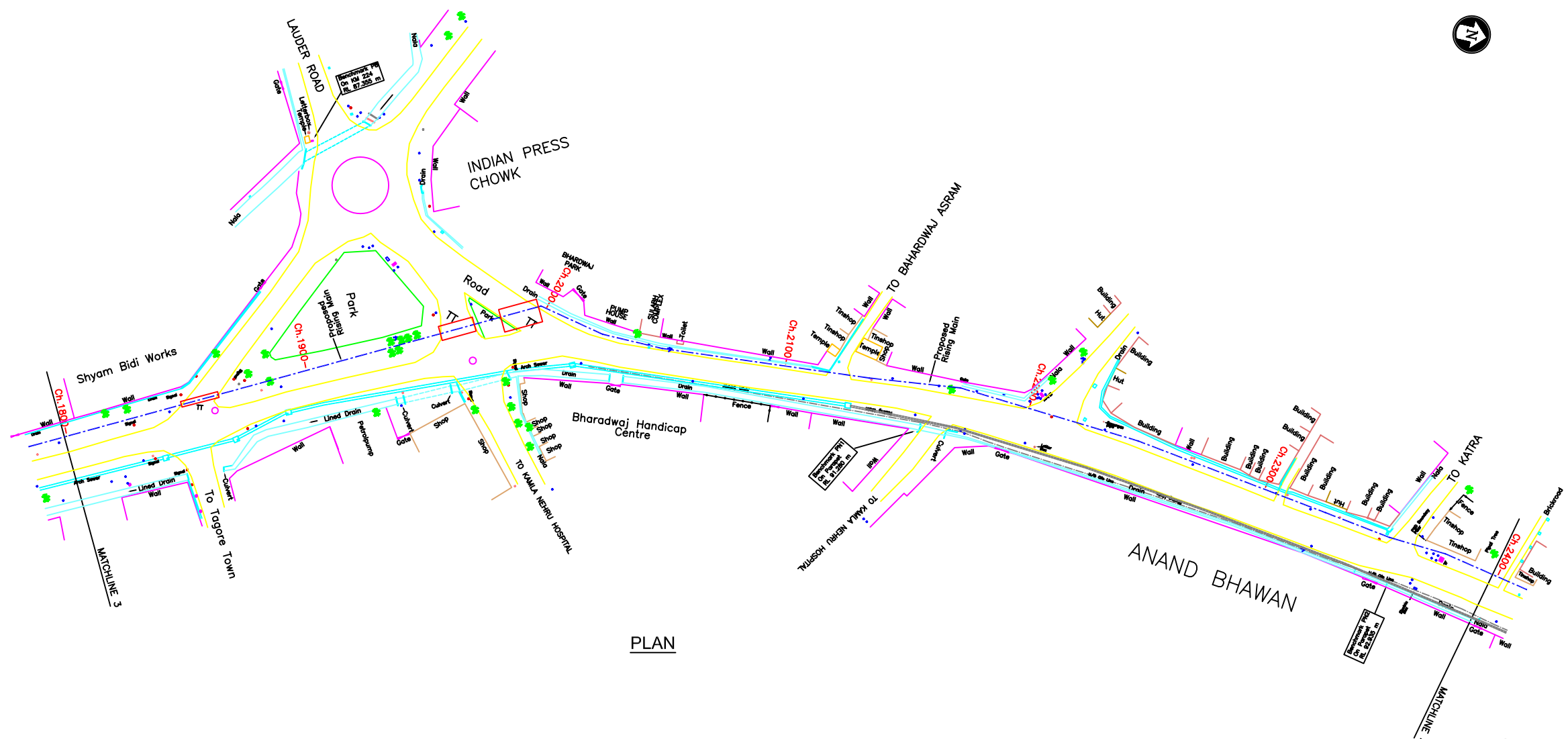
DRAWING NO. ALD-RM-D (APS-MPS)-3	SHT. NO. 59
-------------------------------------	----------------



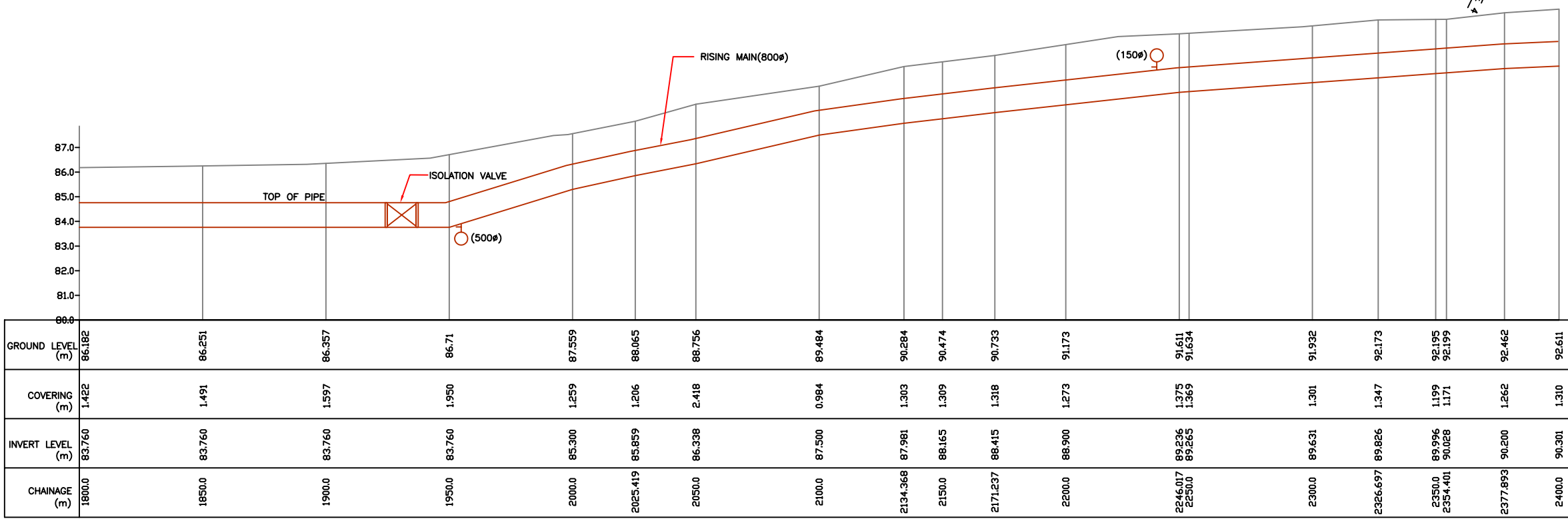
**PLAN**



**L-SECTION**



PLAN



L-SECTION

- NOTES:**
- GTS BENCH MARK ON YAMUNA BRIDGE LOCATED ON STONE AT EAST END OF 9th PIER FROM SOUTH OF YAMUNA BRIDGE 292.075 FT. (89.024 m.)
  - ALL LEVELS ARE IN METERS
  - AIR VALVES /SCOUR VALVES /ISOLATION VALVES HAVE NOT BEEN SHOWN IN PLAN FOR CLARITY.

**LEGEND**

PROPOSED SEWER LINE	
PROPOSED RISING MAIN	
ROAD EDGE	
UNDERGROUND LINES	
CULVERT/BRIDGE	
HANDPUMP	
ELECTRIC POLE	
ELECTRIC LINE	
TELEPHONE POLE	
TELEPHONE LINE	
TRANSFORMER	
OFC PILLAR	
KILOMETER POST	
TREE	
HECTOMETER POST	
LAMP POST	
RAILWAY LINE	
NALA	
WATER MAIN	
EXISTING SEWER	
TRENCHLESS TECHNOLOGY	
NALA CROSSING	
RAILWAY LINE CROSSING	
AIR VALVE	
SCOUR VALVE	
ISOLATION VALVE	

**REFERENCE DRAWING:**

INST.					
ELEC.					
MECH.					
STRU.					
CIVIL					
REV NO.	0	1	2	3	4

REV.	DESCRIPTION OF REVISIONS	DATE	CHECKED

CHECKED BY: A.Bhatnagar	CHECK	APPROVED BY: D.Sarkar	APPROVE
DRAWN M.Pahuja		DESIGNED R.Mittal	SCALE H=1:1000 V=1:100
SURVEYED S.Sharma	DATE 05-02-2005		

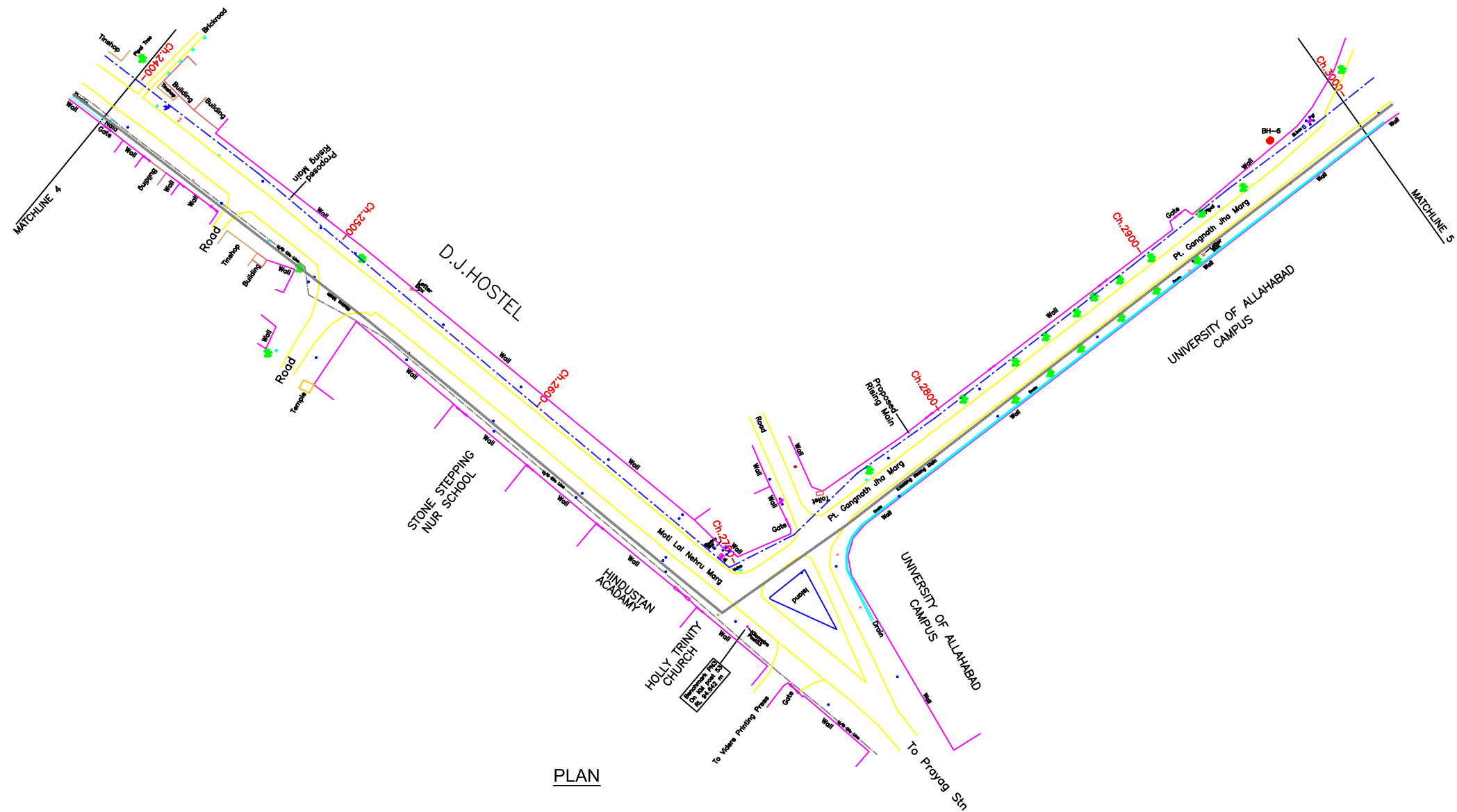
**JICA** JAPAN INTERNATIONAL COOPERATION AGENCY  
 CONSULTANTS:  
 TOKYO ENGINEERING CONSULTANTS CO., LTD.  
 CTI ENGINEERING INTERNATIONAL CO., LTD.  
 STUP CONSULTANTS LTD.

**PROJECT:**  
 THE STUDY ON WATER QUALITY MANAGEMENT PLAN FOR GANGA RIVER IN THE REPUBLIC OF INDIA  
 FEASIBILITY STUDY FOR ALLAHABAD CITY

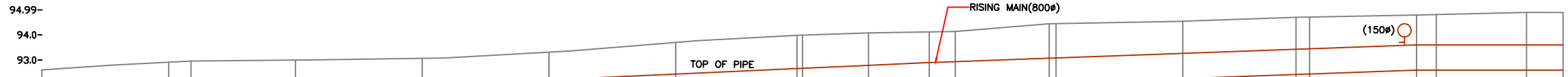
**CORRIDOR:** District : D  
 Alopibag PS to Mumfordganj PS  
 Node : APS-11-8-17-MPS

**SHEET CONTENTS:**  
 PLAN AND PROFILE (4/6)  
 (Proposed Rising Main)  
 (Ch. 1800 - 2400)

TO ALOPIBAGH PS 9 D-(1000 Ø PSC PIPE) TO MUMFORDGANG PS



PLAN



CHAINAGE (m)	GROUND LEVEL (m)	COVERING (m)	INVERT LEVEL (m)
2400.0	92.611	1.310	90.301
2450.0	92.914	1.385	90.529
2458.758	92.959	1.390	90.569
2500.0	93.0	1.242	90.758
2550.0	93.069	1.083	90.986
2600.0	93.312	1.097	91.215
2650.0	93.697	1.254	91.443
2697.845	93.983	1.321	91.662
2700.0	93.99	1.318	91.672
2726.043	94.076	1.285	91.791
2750.0	94.116	1.216	91.900
2760.258	94.133	1.196	91.937
2787.349	94.44	1.368	92.072
2800.0	94.445	1.363	92.082
2850.0	94.538	1.274	92.264
2894.692	94.694	1.267	92.427
2900.0	94.704	1.258	92.446
2942.238	94.786	1.186	92.600
2950.0	94.804	1.204	92.600
2985.595	94.889	1.289	92.600
3000.0	94.887	1.287	92.600

L-SECTION

- NOTES:**
- GTS BENCH MARK ON YAMUNA BRIDGE LOCATED ON STONE AT EAST END OF 9th PIER FROM SOUTH OF YAMUNA BRIDGE 292.075 FT. (89.024 m.)
  - ALL LEVELS ARE IN METERS
  - AIR VALVES /SCOUR VALVES /ISOLATION VALVES HAVE NOT BEEN SHOWN IN PLAN FOR CLARITY.

**LEGEND**

- PROPOSED SEWER LINE
- PROPOSED RISING MAIN
- ROAD EDGE
- UNDERGROUND LINES
- CULVERT/BRIDGE
- HANDPUMP
- ELECTRIC POLE
- ELECTRIC LINE
- TELEPHONE POLE
- TELEPHONE LINE
- TRANSFORMER
- OFC PILLAR
- KILOMETER POST
- HECTOMETER POST
- LAMP POST
- RAILWAY LINE
- NALA
- WATER MAIN
- EXISTING SEWER
- TRENCHLESS TECHNOLOGY
- NALA CROSSING
- RAILWAY LINE CROSSING
- AIR VALVE
- SCOUR VALVE
- ISOLATION VALVE

**REFERENCE DRAWING:**

INST.					
ELEC.					
MECH.					
STRU.					
CIVIL					
REV NO.	0	1	2	3	4

CHECKED BY: A.Bhatnagar	APPROVED BY: D.Sarkar
DRAWN M.Pahuja	APPROVE
DESIGNED R.Mittal	SCALE H=1:1000 V=1:100
SURVEYED S.Sharma	DATE 05-02-2005

**JICA** JAPAN INTERNATIONAL COOPERATION AGENCY  
 CONSULTANTS:  
 TOKYO ENGINEERING CONSULTANTS CO., LTD.  
 CTI ENGINEERING INTERNATIONAL CO., LTD.  
 STUP CONSULTANTS LTD.

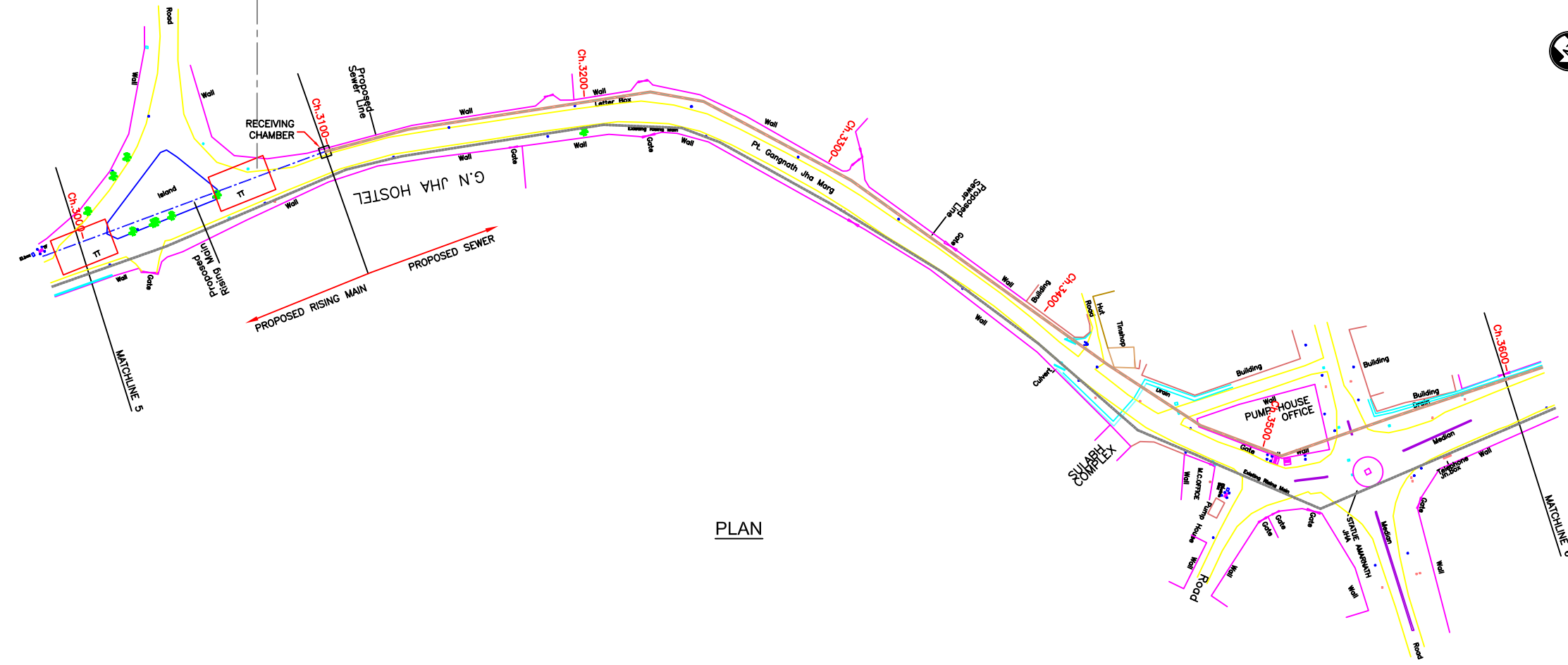
**PROJECT:**  
 THE STUDY ON WATER QUALITY MANAGEMENT PLAN FOR GANGA RIVER IN THE REPUBLIC OF INDIA  
 FEASIBILITY STUDY FOR ALLAHABAD CITY

**CORRIDOR:** District : D  
 Alopibag PS to Mumfordganj PS  
 Node : APS-11-8-17-MPS

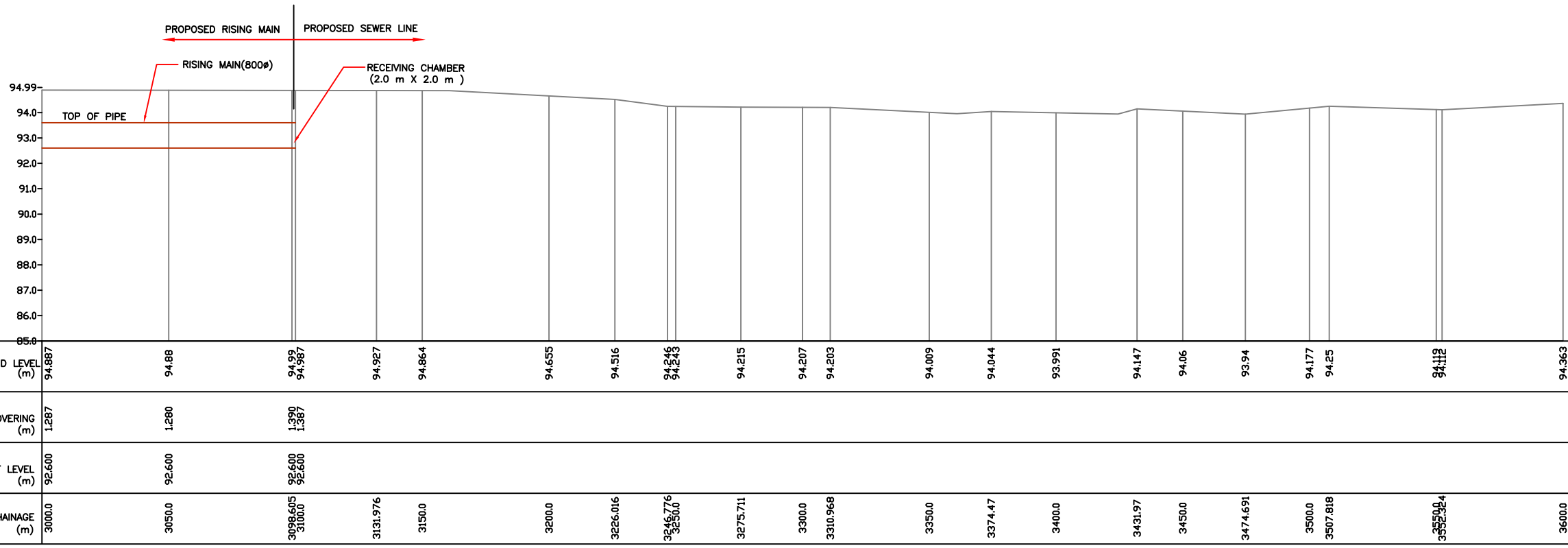
**SHEET CONTENTS:**  
 PLAN AND PROFILE (5/6)  
 (Proposed Rising Main)  
 (Ch. 2400 - 3000)



T O ALOPIBAGH P S ← 9 D-(1000 Ø PSC PIPE) NODE-17 5D-(1200 Ø PSC PIPE) TO MUMFORDGANG P S



PLAN



L-SECTION

- NOTES:**
- GTS BENCH MARK ON YAMUNA BRIDGE LOCATED ON STONE AT EAST END OF 9th PIER FROM SOUTH OF YAMUNA BRIDGE 292.075 Ft. (89.024 m.)
  - ALL LEVELS ARE IN METERS
  - AIR VALVES /SCOUR VALVES /ISOLATION VALVES HAVE NOT BEEN SHOWN IN PLAN FOR CLARITY.

**LEGEND**

- PROPOSED SEWER LINE
- PROPOSED RISING MAIN
- ROAD EDGE
- UNDERGROUND LINES
- CULVERT/BRIDGE
- HANDPUMP
- ELECTRIC POLE
- ELECTRIC LINE
- TELEPHONE POLE
- TELEPHONE LINE
- TRANSFORMER
- OFC PILLAR
- KILOMETER POST
- HECTOMETER POST
- LAMP POST
- RAILWAY LINE
- NALA
- WATER MAIN
- EXISTING SEWER
- TRENCHLESS TECHNOLOGY
- NALA CROSSING
- RAILWAY LINE CROSSING
- AIR VALVE
- SCOUR VALVE
- ISOLATION VALVE

**REFERENCE DRAWING:**

INST.					
ELEC.					
MECH.					
STRU.					
CIVIL					
REV. NO.	0	1	2	3	4

REV.	DESCRIPTION OF REVISIONS	DATE	CHECKED

CHECKED BY: A.Bhatnagar	APPROVED BY: D.Sarkar
DESIGNED R.Mittal	SCALE H=1:1000 V=1:100
DRAWN M.Pahuja	APPROVE
SURVEYED S.Sharma	DATE 05-02-2005

**JICA** JAPAN INTERNATIONAL COOPERATION AGENCY

CONSULTANTS:  
 TOKYO ENGINEERING CONSULTANTS CO., LTD.  
 CTI ENGINEERING INTERNATIONAL CO., LTD.  
 STUP CONSULTANTS LTD.

**PROJECT:**  
THE STUDY ON WATER QUALITY MANAGEMENT PLAN FOR GANGA RIVER IN THE REPUBLIC OF INDIA  
FEASIBILITY STUDY FOR ALLAHABAD CITY

**CORRIDOR:** District : D  
Alopibag PS to Mumfordganj PS  
Node : APS-11-8-17-MPS

**SHEET CONTENTS:**  
PLAN AND PROFILE (6/6)  
(Proposed Rising Main)  
(Ch. 3000 - 3100)